

The background of the slide is a composite image. It features a scenic view of a mountain range with a turquoise lake in the upper right and a dense forest of evergreen trees in the lower left. Overlaid on the right side of the image is a large, detailed head of a bighorn sheep, facing left, with its characteristic curved horns.

Community Liaison Committee Meeting

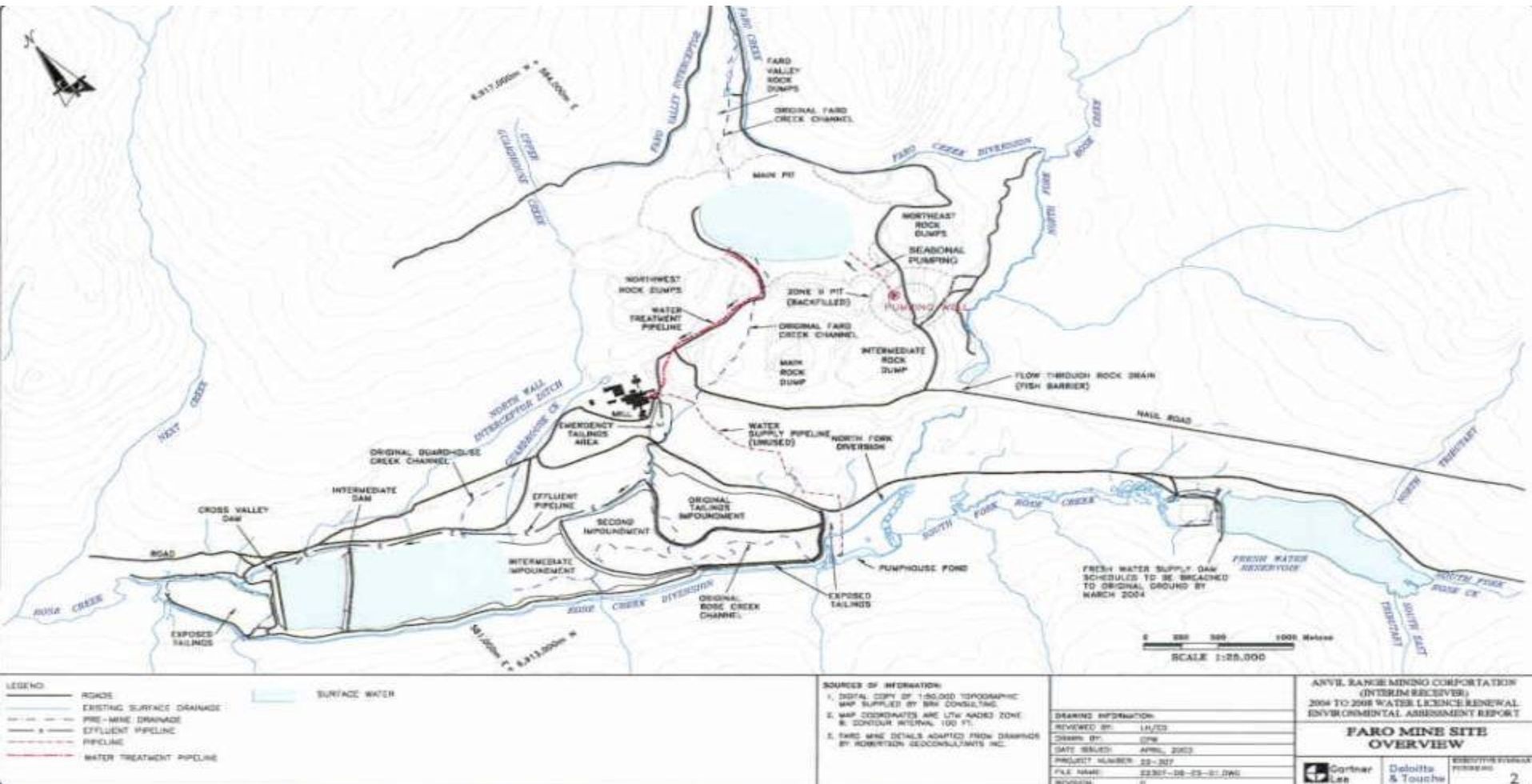
July 5, 2006

Agenda

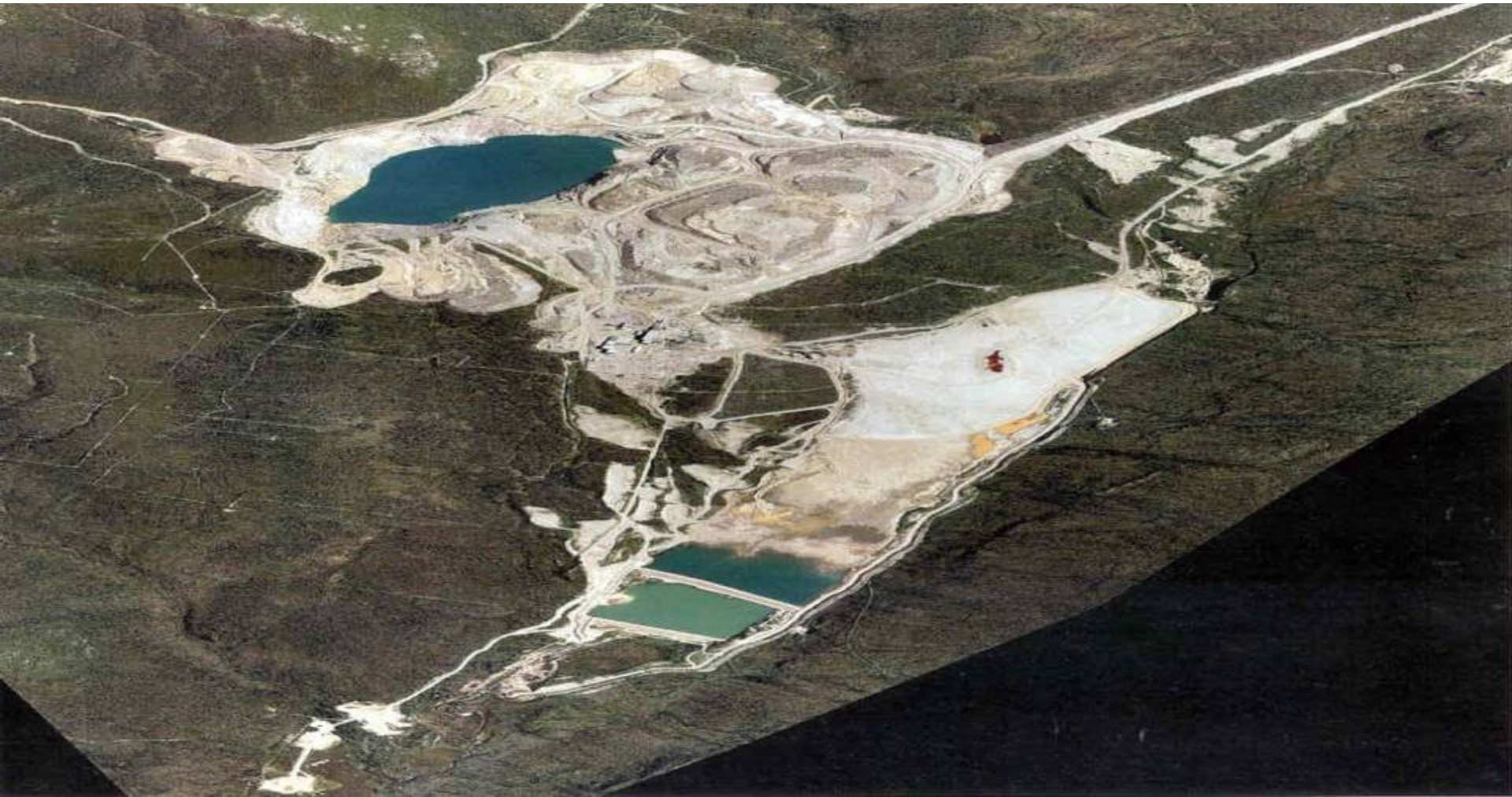
1. Welcome/introductions
 2. Overview – Status of Receivership Administration
 3. 2004-2005 Care and Maintenance Programs
 4. Comprehensive Risk Assessment Update
 5. Questions and Answers
- Break
6. Site Tour (Lunch at the Mine Site)

2005/2006
Care and Maintenance Program

Faro Mine Site Overview



Faro Mine Site



Faro Mine Access Road



Fresh Water Supply Reservoir



Fresh Water Supply Reservoir



Summer 2005

Fresh Water Supply Reservoir Breach Channel



Down Valley Tailings Impoundment



Fall 2005

Decommissioning P-01 Wells



Decommissioned Well



Summer 2005

Removal of Tailings Outside of Second Tailings Impoundment



Down Valley Tailings Impoundment and Rose Creek Diversion



Summer 2005

Intermediate Dam



Summer 2005

Rose Creek Dyke Road



June 2005

Cross Valley Pond – Sludge Containment



June 2005

Cross Valley Pond (Polishing Pond)



Fall 2005

Cross Valley Pond



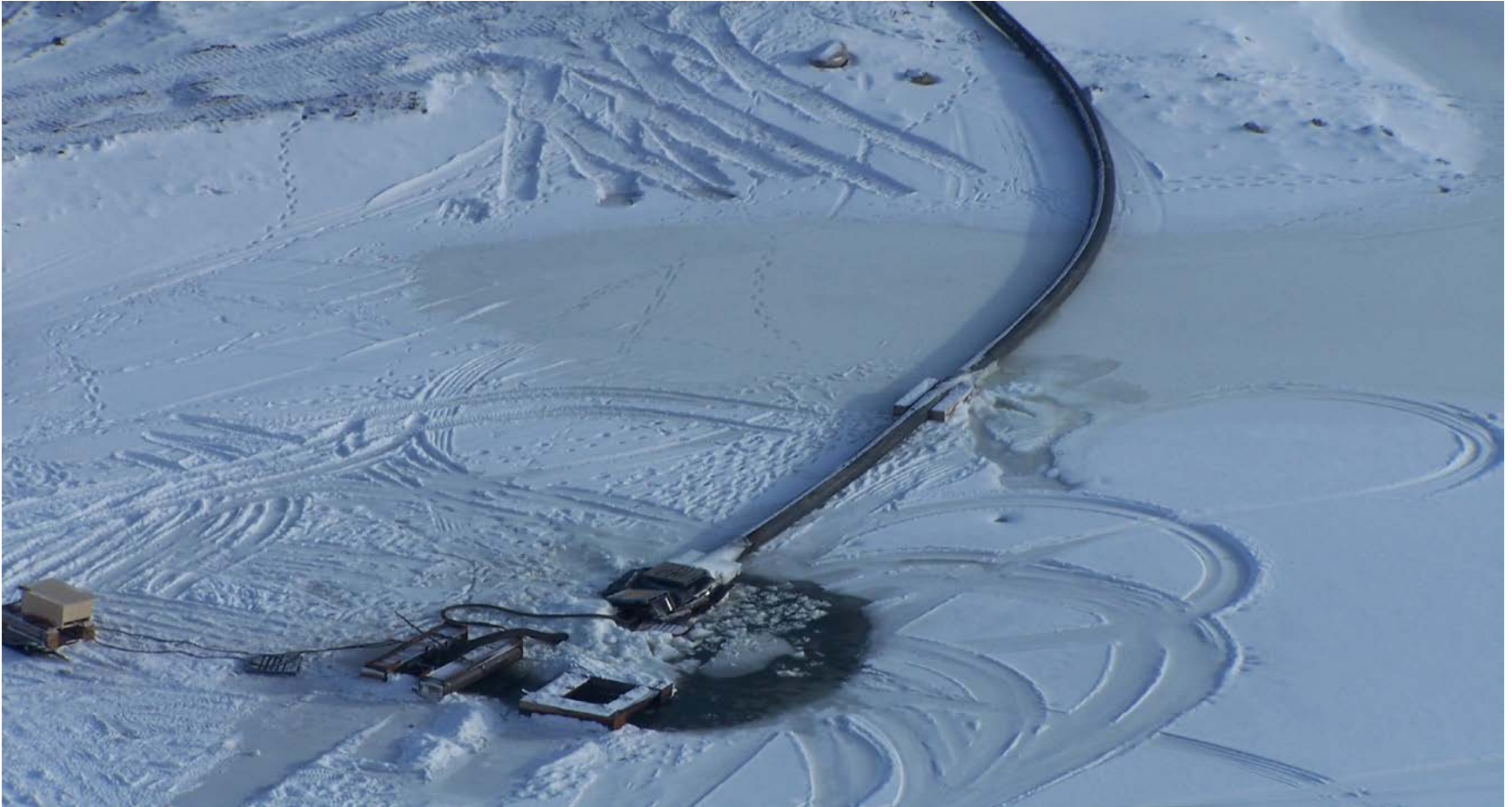
February 2006

Cross Valley Pond



February 2006

Water Pumping Installation



March 2006

Sludge Removal Project



March 2006

Sludge Removal Project



March 2006

Sludge Removal Project



March 2006

Cross Valley Pond Shoreline



March 2006

Intermediate Water Treatment Discharge Sump



March 2006

Sludge Removal Project



April 2006

Intermediate Water Discharge



April 2006

Intermediate Water Treatment



First Tailings Impoundment Sludge Containment Cell

June 2005



March 2006

Sludge Containment Cell



March 2006

Sludge Containment Cell



April 2006

Sludge Containment Cell



Faro Mill Complex



Summer 2005

ETA Water



Summer 2005

ETA Water



ETA Canyon



Faro Mill



Concentrate Load Out Building



August 2005

Concentrate Load Out Building



August 2005

Concentrate Load Out Building



Bagged Zinc Concentrate



Faro Scrap Yard



Summer 2005

Faro Garbage Dump



Faro Pit



Summer 2005

Surface Water Above Faro Pit



June 2005

Faro Valley



Faro Pit



Summer 2005

Faro Pit



June 2005

North Fork Rock Drain

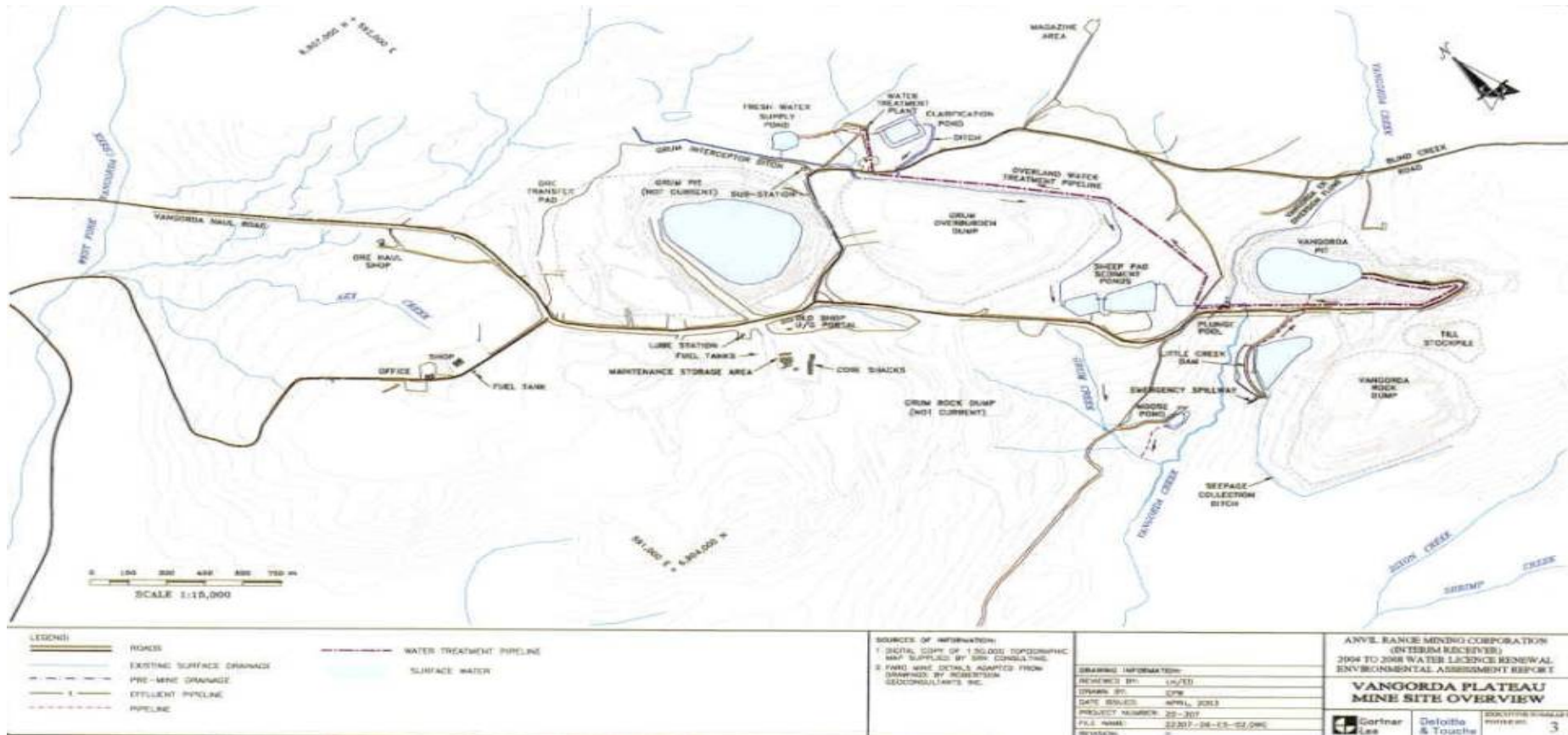


June 2005

North Fork Rock Drain



Vangorda Plateau Mine Site Overview



Grum/Vangorda Plateau



Summer 2005

Grum Pit



Summer 2005

Grum Pit Wall



June 2005

Vangorda Plateau



Vangorda Clarification Pond – Sludge Containment



Vangorda Plateau



June 2005

Vangorda Rock Dump



June 2005

Vangorda Pit



Vangorda Pit



January 2006

Vangorda Pit Road



June 8, 2004

Vangorda Headworks Dam



Summer 2005

Headworks Dam – Culvert Installation



Summer 2005

Headworks Dam – Culvert Installation



Overflow Culverts – Headworks Dam



June 2005

Vangorda Dump Covers



Summer 2005

Water Test for Covers



Security and Maintenance	2004	2005	2006
Main Expenditures	\$	\$	\$
Payroll and Benefits	335,250	383,750	391,500
Mechanical and maintenance	97,000	100,000	105,000
Insurance	144,000	150,000	64,000
Contractors	70,000	115,000	155,000
Fuel and Lubricants	100,000	120,500	133,400
Security & Maintenance Program			
TOTAL	\$1,039,450	\$1,161,950	\$1,222,460

Environmental (Water Treatment)	2004	2005	2006
Main Expenditures	\$	\$	\$
Payroll and Benefits	1,210,400	1,279,900	1,169,000
Environmental Engineering	190,000	190,000	190,000
Lime	280,000	100,000	256,000
Lease payments	264,000	264,000	NIL
Maintenance and Parts	190,000	190,000	200,000
Yukon Electric	650,000	775,000	630,000
Support Services Labs	77,000	162,000	146,000
Fuel and Lubricants	108,000	180,000	244,000
Environmental (Water Treatment)			
PROGRAM TOTAL	\$3,128,500	\$3,379,900	\$3,262,800

	2004	2005	2006
Care & Maintenance Budget TOTAL	\$4,168,000	\$4,541,850	\$4,487,060

Comprehensive Risk Assessment

2005/2006 Update

Questions and Answers



Deloitte, Canada's leading professional services firm, provides audit, tax, financial advisory services and consulting through more than 6,100 people in more than 47 offices. Deloitte & Touche LLP, operates in Québec as Samson Bélair/Deloitte & Touche s.e.n.c.r.l. The firm is dedicated to helping its clients and its people excel. Deloitte is the only professional services firm to be named to the *Globe and Mail's Report on Business* magazine annual ranking of Canada's top employers for two consecutive years: 35 Best Companies to Work for in Canada in 2001 and 50 Best Companies to Work for in Canada in 2002. "Deloitte" refers to Deloitte & Touche LLP and affiliated entities. Deloitte is the Canadian member firm of Deloitte Touche Tohmatsu. Deloitte Touche Tohmatsu is a Swiss Verein (association), and, as such, neither Deloitte Touche Tohmatsu nor any of its member firms has any liability for each other's acts or omissions. Each of the member firms is a separate and independent legal entity operating under the name "Deloitte", "Deloitte & Touche", "Deloitte Touche Tohmatsu" or other related names. The services described herein are provided by the Canadian member firm and not by the Deloitte Touche Tohmatsu Verein.