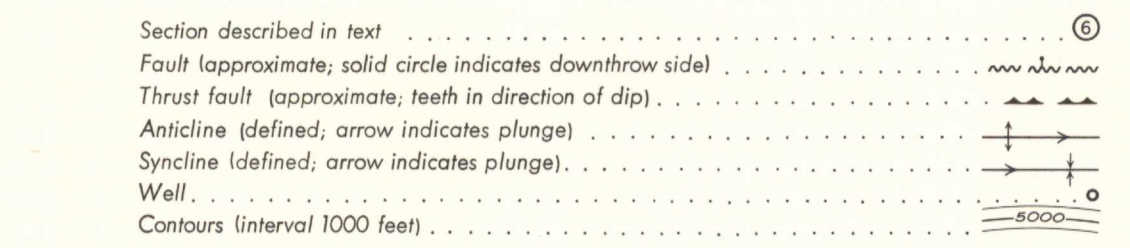
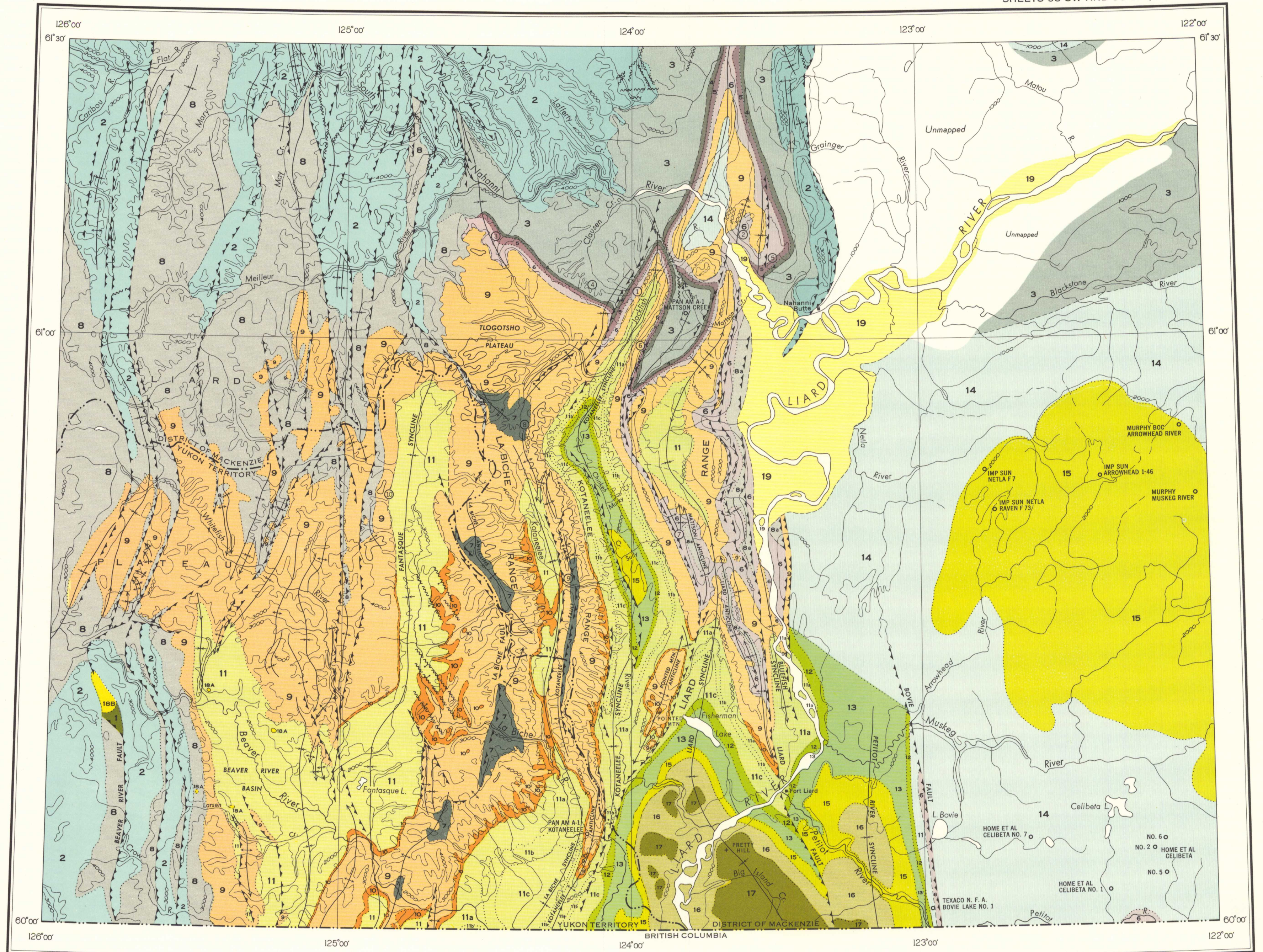
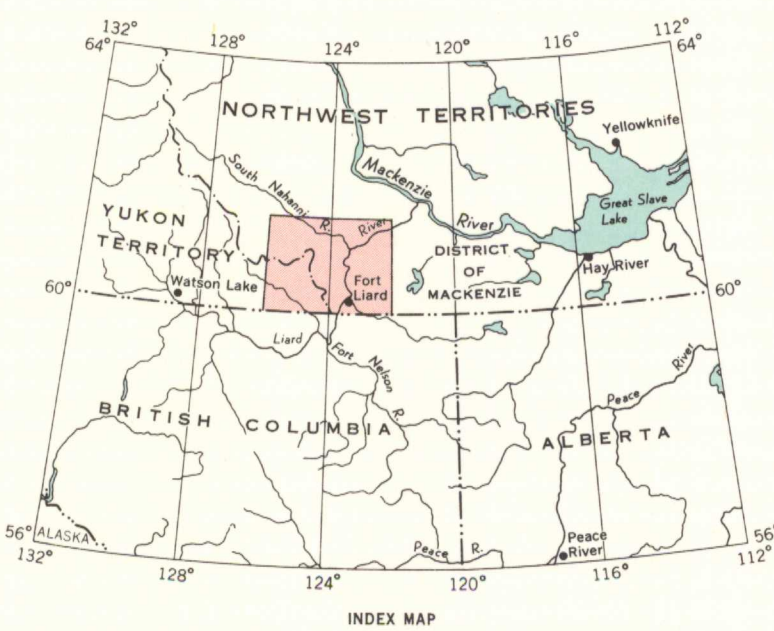


LEGEND

- CENOZOIC**
- PLEISTOCENE AND RECENT**
- 19 Alluvial sands and silts of Liard River
- CRETACEOUS OR YOUNGER**
- 18 18A, Trachyte  
18B, Syenite (may be older)
- CRETACEOUS**
- UPPER CRETACEOUS**
- 17 WAPITI FORMATION: sandstone, coal
- 16 KOTANEELEE FORMATION: concretionary shale, sandstone
- 15 FORT NELSON FORMATION: sandstone, conglomerate, shale, siltstone
- LOWER CRETACEOUS**
- FORT ST. JOHN GROUP (11-13)
- 13 SULLY FORMATION: concretionary and gypsiferous shale
- 12 SIKANNI FORMATION: sandstone, siltstone, shale
- 11 BUCKINGHORSE FORMATION: shale and sandstone (includes some older beds); 11a, lower member; concretionary shale, sandstone, conglomerate (includes some older beds); 11b, middle member; sandstone; 11c, upper member; concretionary shale
- 14 FORT ST. JOHN GROUP  
Undivided; shale and sandstone
- CARBONIFEROUS AND PERMIAN**
- 10 FANTASQUE FORMATION: chert and sandstone
- 9 MATTSON FORMATION: sandstone, shale, limestone
- MISSISSIPPIAN**
- 6 FLETT FORMATION: limestone and shale
- 5 CLAUSEN FORMATION: shale
- 4 YOHIN FORMATION: sandstone, shale
- UPPER DEVONIAN**
- 3 Undivided
- DEVONIAN AND OLDER**
- 2 Dolomite, limestone conglomerate
- PROTEROZOIC (?)**
- 1 Green argillite



Geology by W. B. Brady, R. J. W. Douglas, P. Harker, D. K. Norris, D. F. Stott, 1957  
Compiled by R. J. W. Douglas, P. Harker and D. K. Norris  
Cartography by the Geological Survey of Canada  
To accompany G.S.C. Bulletin 95, by P. Harker



PUBLISHED, 1963  
COPIES OF THIS MAP MAY BE OBTAINED FROM THE  
DIRECTOR, GEOLOGICAL SURVEY OF CANADA, OTTAWA

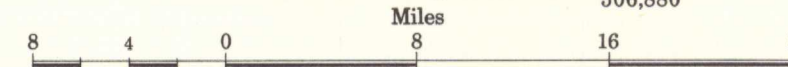
PRINTED BY THE SURVEYS AND MAPPING BRANCH

MAP 1141A

GEOLOGY

SOUTHERN MACKENZIE MOUNTAINS AREA  
YUKON TERRITORY AND DISTRICT OF MACKENZIE

Scale: One Inch to Eight Miles =  $\frac{1}{506,880}$



Mean magnetic declination, 33° 26' East, decreasing 4.3' annually. Readings vary from 33° 53' E in the NW corner to 32° 12' E in the SE corner of the map-area

NOT TO BE TAKEN FROM LIBRARY  
NE PAS SORTIR DE LA BIBLIOTHEQUE



G3401-C5  
1910-  
G4  
Ommc  
1141A