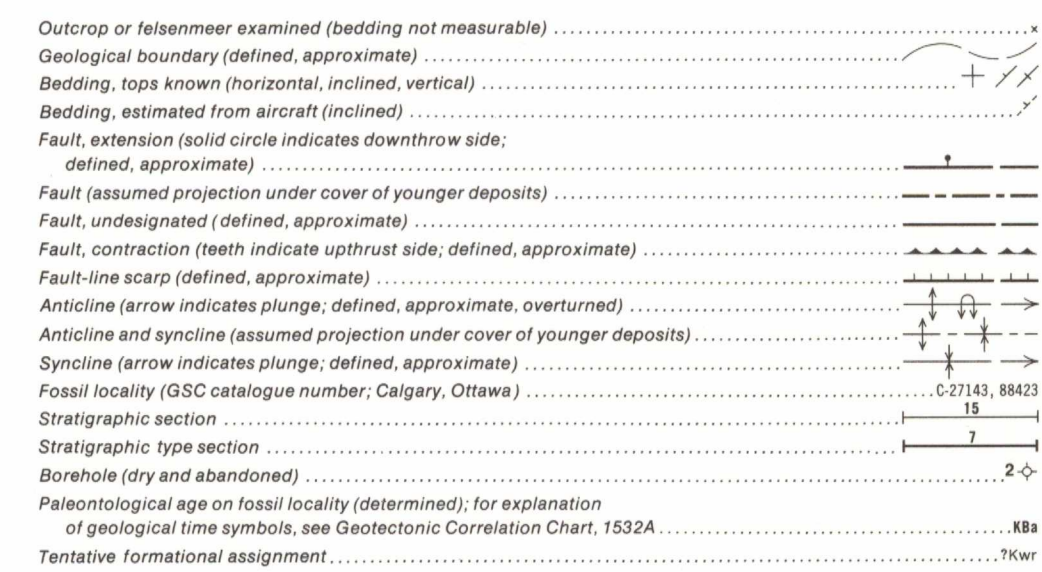


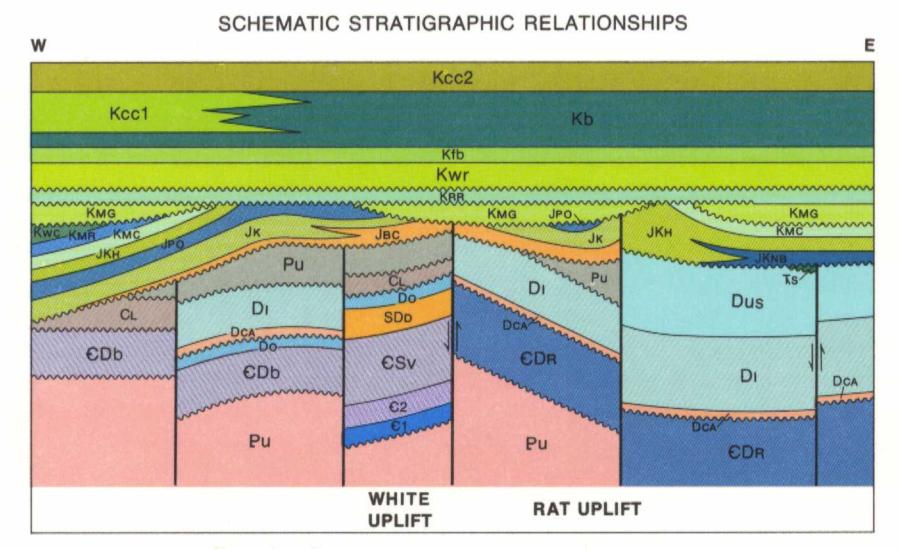
- QUATERNARY HOLOCENE: Qf, Qff, Qi, B, Tertiary Tertiary: Tg, Cretaceous Lower and Upper Cretaceous: Kcc2, Kcc1, Kb, Kfb, Kwr, Lower Cretaceous: KRR, KMG, Kwc, KMR, KMC, Jurassic and Cretaceous: JKH, JPD, JJK, JK, Jurassic: JAK, JRM, JBC1, Triassic: Ts, Permian Lower and Middle Permian: P2, P1, P0, Carboniferous: CA, Devonian Upper Devonian: Dus, Di2, Di1, DCA, Lower and Middle Devonian: Do, Silurian and Devonian Upper Silurian and Lower Devonian: SDd, Cambrian to Silurian: CSv, Cambrian Middle and Upper Cambrian: C2, Lower Cambrian: C1, Proterozoic: Pu



Geology by D.K. Norris, 1975

SCHEDULE OF WELLS table with 5 entries: 1. Amerada et al. YT-A No. 1; 2. Chevron SOBC WM Whitefish YT J-05; 3. Chevron SOBC Gulf Ridge YT F-48; 4. Chevron SOBC WM Whitefish YT J-70; 5. Westcoast et al. North Porcupine YT F-72.

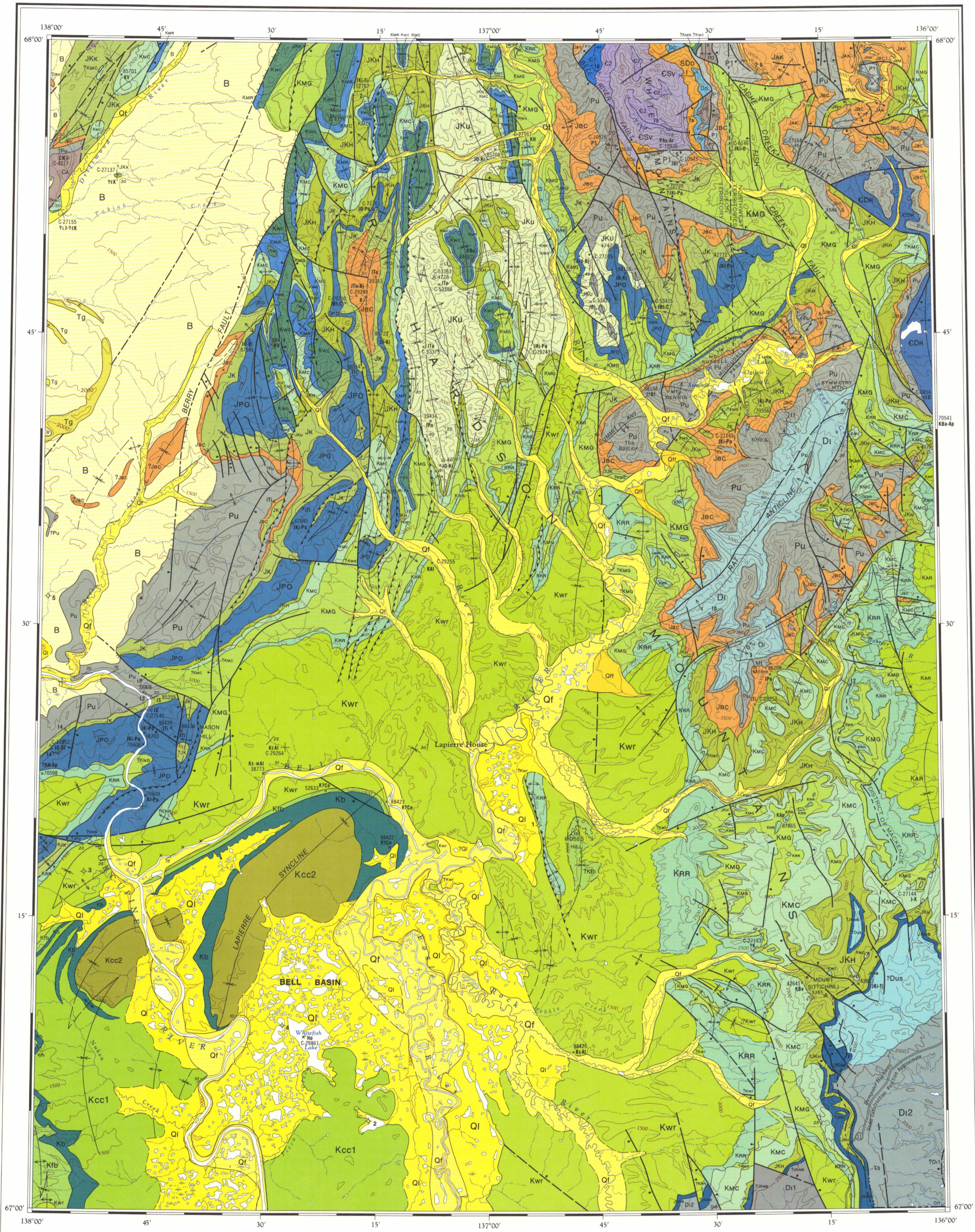
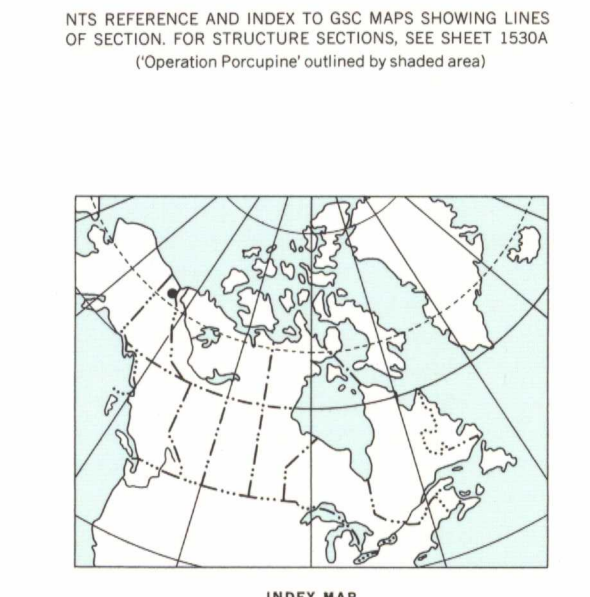
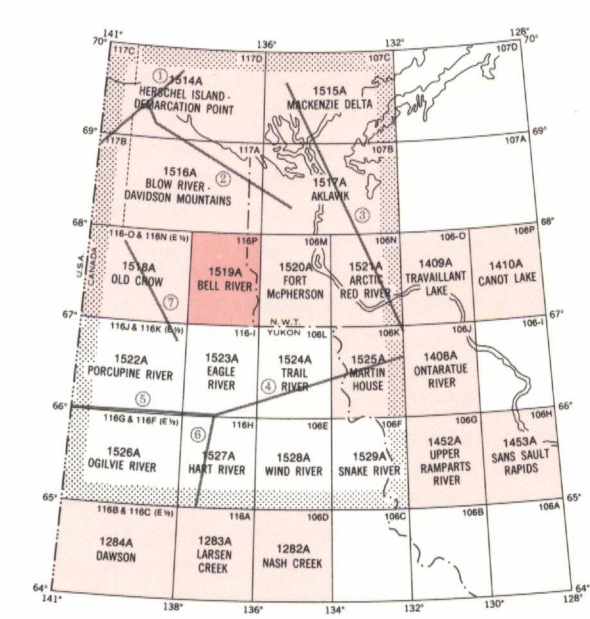
ACKNOWLEDGMENTS: Geological synthesis based on field observations and/or paleontological determinations made by the following geologists and industry geological departments...



Geological cartography by B.H. Ortman, Institute of Sedimentary and Petroleum Geology, Geological Survey of Canada

Base map at the same scale published by the Surveys and Mapping Branch in 1974

Magnetic declination 1980 varies from 35°57.9' easterly at centre of west edge to 37°43.8' easterly at centre of east edge. Mean annual change 6.4' westerly



Copies of this map may be obtained from the Geological Survey of Canada, 601 Booth Street, Ottawa, Ontario K1A 0E8

MAP 1519A GEOLOGY BELL RIVER YUKON TERRITORY - NORTHWEST TERRITORIES Scale 1:250,000

Library / Bibliothèque Geological Survey of Canada Commission Géologique du Canada Ottawa, Canada K1A 0E8

NOT TO BE TAKEN FROM LIBRARY / NE PAS SORTIR DE LA BIBLIOTHÈQUE

This map has been produced from a scanned version of the original map / Reproduction par numérisation d'une carte sur papier

THE STRUCTURE SECTION DIAGRAM AND GEOTECTONIC CORRELATION CHART FOR THE AREA COVERED BY MAPS 1514A TO 1529A ARE AVAILABLE SEPARATELY AS SHEETS 1530A AND 1532A