

QUATERNARY HOLOCENE: Qf, QH, QI, B

CRETACEOUS LOWER AND UPPER CRETACEOUS: Kcc1, Kb, Ktb, Kwr

LOWER CRETACEOUS: KRR, KMG, KWC, KMR, KMC

JURASSIC AND CRETACEOUS: JKH, JPC, JK, JKk

PERMIAN LOWER AND MIDDLE PERMIAN: Pt, PJC

CARBONIFEROUS UPPER CARBONIFEROUS: Ce2, Cb, CHR

DEVONIAN AND CARBONIFEROUS: DCF, Df, Dca, Do, Dg

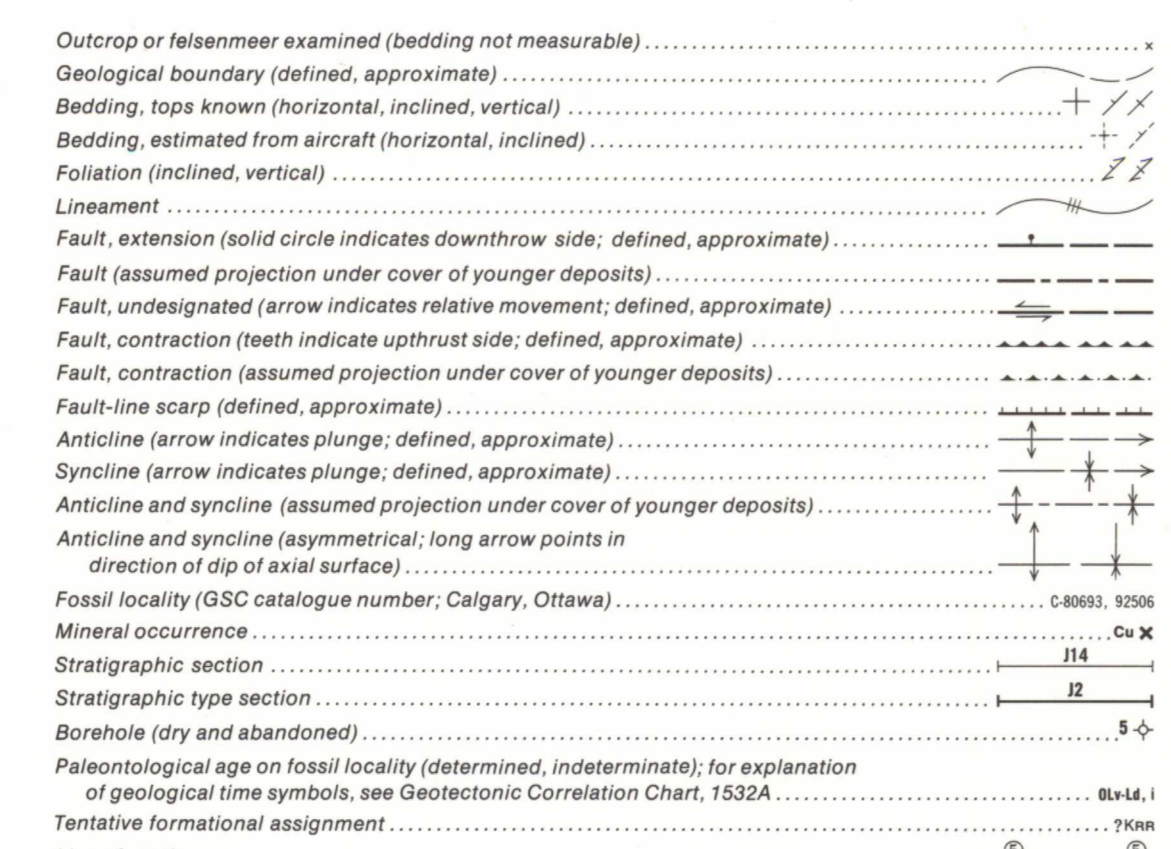
CAMBRIAN TO DEVONIAN: CDB, CDR

HELIKIAN: Pu, Hq

KEP EAGLE PLAIN FORMATION: undivided (Structure section 7 only)

KBI BIEDERMAN ARGILLITE: argillite, sandstone, turbiditic

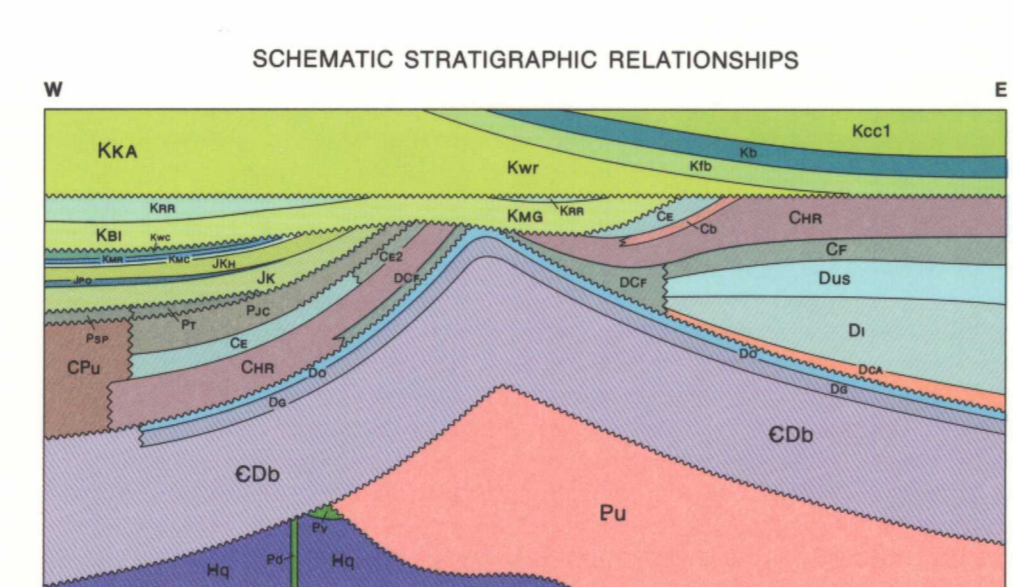
KKA KATHUL GRAYWACKE: pebble conglomerate, sandstone, and argillite, marine



MINERALS: Copper (Cu), Lead (Pb), Iron (Fe), Zinc (Zn)

- SCHEDULE OF WELLS: 1. Peel Plateau Eagle Plains YT No. 1, T.D. 2923 m; 2. Socony Mobil et al. Whitehorse YT N-26, T.D. 2464 m; 3. Socony Mobil W.M.N. Cash YT B-62, T.D. 2138 m; 4. Western Minerals N. Hope YT N-53, T.D. 4280 m; 5. Inxco Husky et al. Porcupine YT G-31, T.D. 2658 m

ACKNOWLEDGMENTS: Geological synthesis based on field observations and/or paleontological determinations made by the following geologists listed alphabetically...

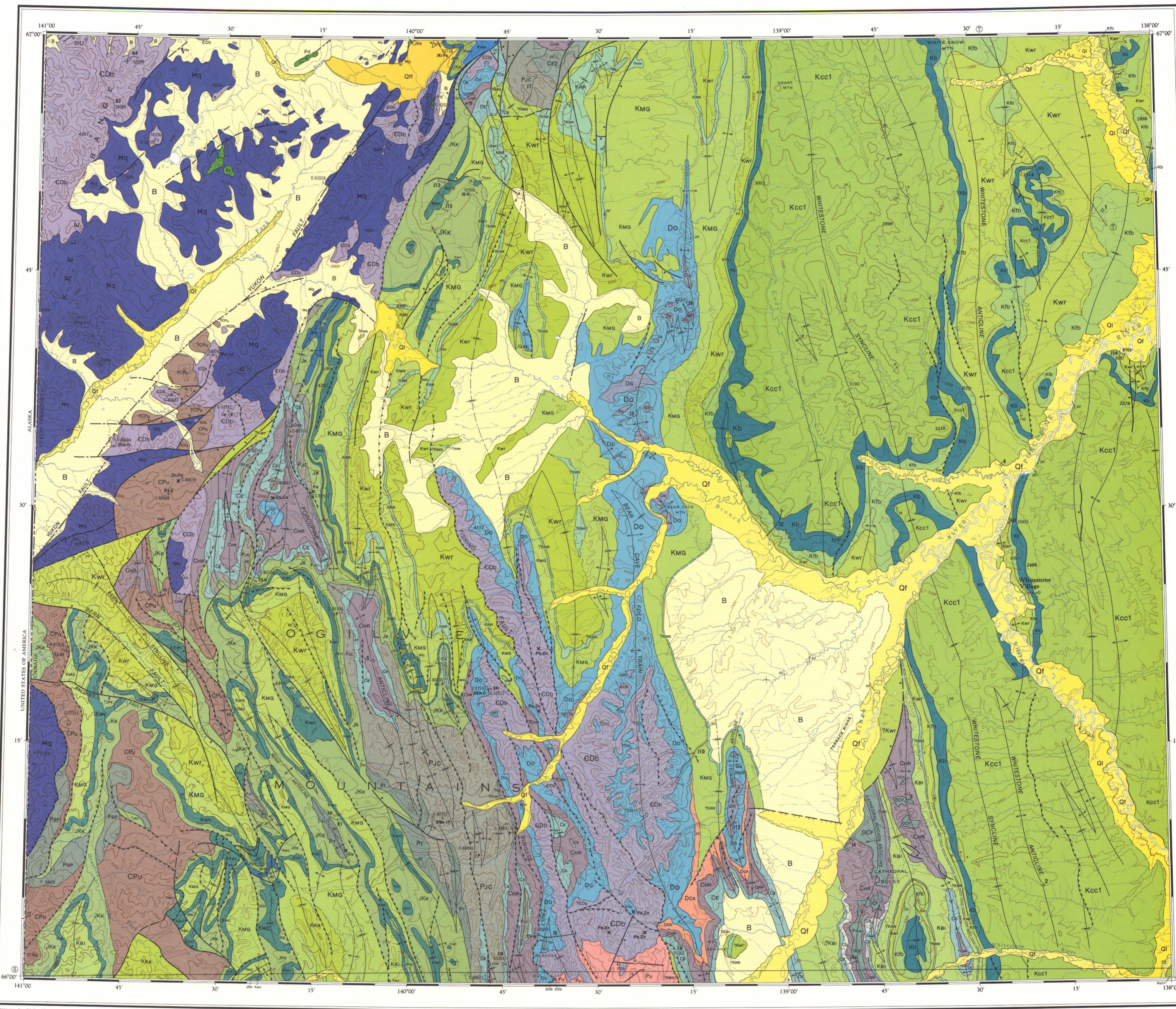
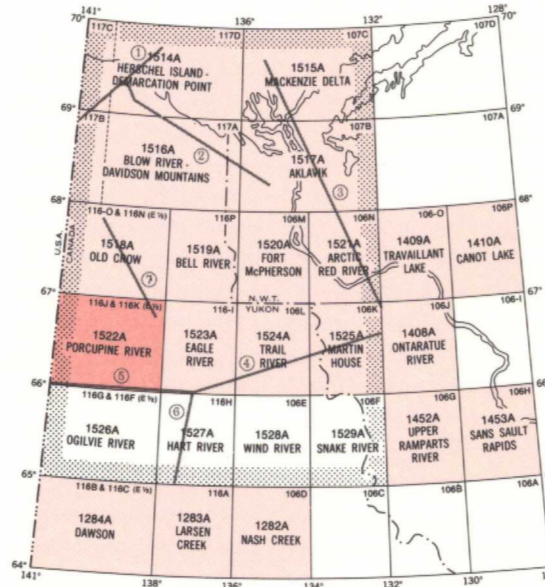


Geological cartography by B.H. Ortman, Institute of Sedimentary and Petroleum Geology, Geological Survey of Canada

Base map at the same scale published by the Surveys and Mapping Branch in 1959

Copies of the topographical edition of this map may be obtained from the Canada Map Office, Department of Energy, Mines and Resources, Ottawa

Magnetic declination 1981 varies 3°04.6' easterly at centre of west edge to 3°16.0' easterly at centre of east edge. Mean annual change 5.0' westerly



Copies may be obtained from the Geological Survey of Canada, 601 Booth Street, Ottawa, Ontario K1A 0E8, 3303 - 33rd Street N.W., Calgary, Alberta T2C 2A7

MAP 1522A GEOLOGY PORCUPINE RIVER YUKON TERRITORY Scale 1:250,000

NOT TO BE TAKEN FROM LIBRARY / NE PAS SORTIR DE LA BIBLIOTHÈQUE

THE STRUCTURE SECTION DIAGRAM AND GEOTECTONIC CORRELATION CHART FOR THE AREA COVERED BY MAPS 1514A TO 1529A ARE AVAILABLE SEPARATELY AS SHEETS 1530A AND 1532A

