



LEGEND

- CENOZOIC**
- QUATERNARY HOLOCENE**
- Qf** Fluvial silt, sand and gravel, in part with cover of organic deposits; undivided
- MESOZOIC**
- CRETACEOUS LOWER AND UPPER CRETACEOUS**
- KTR** TREVOR FORMATION: sandstone, mesa-forming; deltaic and marine
- LOWER CRETACEOUS**
- KAR** ARCTIC RED FORMATION: shale and siltstone; marine; includes patches of Laurentide moraine and glaciofluvial deposits
- DEVONIAN UPPER DEVONIAN**
- Di** IMPERIAL FORMATION (and equivalents, undivided): shale and siltstone; marine
- Dca** CANOL FORMATION: shale, black, bituminous, siliceous; marine. (Structure sections 3 and 4 only)
- MIDDLE DEVONIAN**
- DHi** HARE INDIAN FORMATION: shale, siltstone and limestone; marine. (Structure section 3 only)
- DHu** HUME FORMATION: limestone and shale; marine. (Structure section 3 only)
- LOWER AND MIDDLE DEVONIAN**
- Dg** GOSSAGE FORMATION: limestone and dolomite; marine. (Structure section 3 only)
- CAMBRIAN TO DEVONIAN LOWER CAMBRIAN TO MIDDLE DEVONIAN**
- Edb** Dolomite, limestone, evaporite and shale; marine; undivided; includes Gossage, Hume and Hare Indian Formations in structure section 4. (Structure sections 3 and 4 only)
- PROTEROZOIC**
- ? HELIKIAN**
- Pu** Dolomite, argillite and quartzite; marine; undivided. (Structure sections 3 and 4 only)

- Outcrop or telsenmeer examined (bedding not measurable) ..... x
- Geological boundary (defined, approximate) ..... - - - - -
- Bedding, tops known (horizontal) ..... +
- Drumlins, drumlinoid ridges (direction of movement not inferred) ..... - - - - -
- Fossil locality (GSC catalogue number; Calgary, Ottawa) ..... C-30082, 52724
- Borehole (dry and abandoned) ..... - - - - -
- Paleontological age on fossil locality (determined); for explanation of geological time symbols, see Geotectonic Correlation Chart, 1532A ..... Kp-M
- Tentative formational assignment ..... ? KTR
- Line of section ..... - - - - -

Geology by D.K. Norris, 1975

SCHEDULE OF WELLS

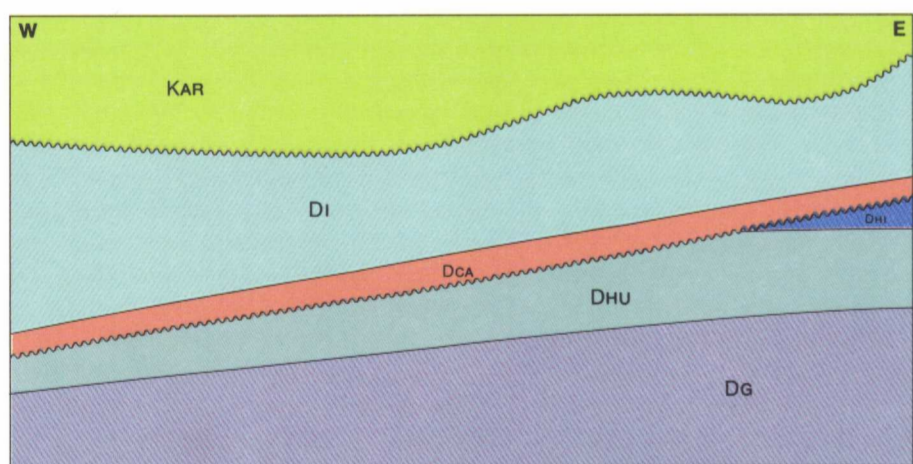
1. Atlantic et al. Arctic Circle Ontario H-34; T.D. 4075 m
2. IOE Martin House L-50; T.D. 2408 m
3. Shell Arctic Red River O-27; T.D. 2154 m
4. Shell Arctic Red West G-55; T.D. 3323 m
5. Shell Sainville River K-63; T.D. 789 m
6. Skelly et al. Arctic Red YT C-60; T.D. 2600 m
7. Inexco et al. Weldon Creek O-65; T.D. 2214 m
8. Arco Shell Sainville River D-08; T.D. 2652 m
9. Shell Peel River YT M-69; T.D. 3273 m

Note: Well listing is chronological in order of spudding date

ACKNOWLEDGMENTS

Geological synthesis based on field observations and/or paleontological determinations made by the following geologists of the Geological Survey of Canada, listed alphabetically, with corresponding years of field activity where applicable: W.W. Bideaux; T.P. Chamney; O.L. Hughes, 1962; J.A. Jeletzky; E.W. Mountjoy, 1962; G.R. Turnquist, 1962.

SCHEMATIC STRATIGRAPHIC RELATIONSHIPS



Unconformity.....

Geological cartography by M.D. Wallace, Institute of Sedimentary and Petroleum Geology, Geological Survey of Canada

Any revisions or additional information known to the user would be welcomed by the Geological Survey of Canada

Base map at the same scale published by the Surveys and Mapping Branch in 1959

Copies of the topographical edition of this map may be obtained from the Canada Map Office, Department of Energy, Mines and Resources, Ottawa

Magnetic declination 1980 varies from 35°49.8' easterly at centre of west edge to 36°12.9' easterly at centre of east edge. Mean annual change 7.7' westerly

Elevations in feet above mean sea level

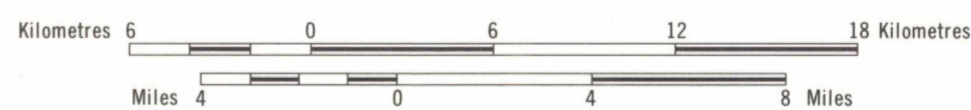


Copies of this map may be obtained from the Geological Survey of Canada, 601 Booth Street, Ottawa, Ontario K1A 0E8, 3303-33rd Street N.W., Calgary, Alberta T2L 2A7

Printed by the Surveys and Mapping Branch, 1981

MAP 1525A  
GEOLOGY  
**MARTIN HOUSE**  
YUKON - NORTHWEST TERRITORIES

Scale 1:250,000

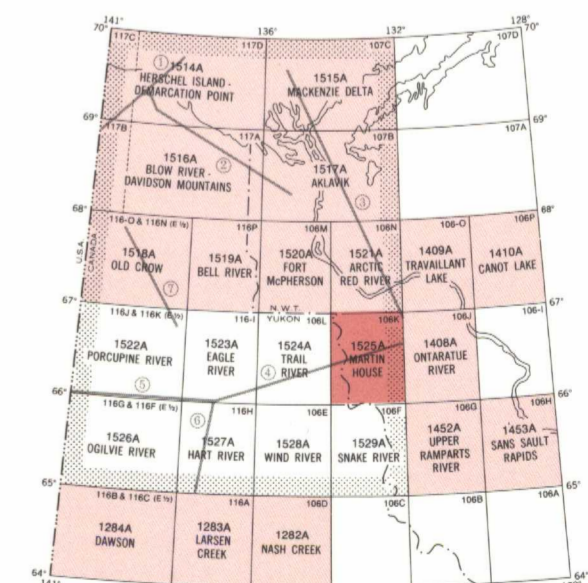


Transverse Mercator Projection  
© Crown Copyrights reserved

THE STRUCTURE SECTION DIAGRAM AND GEOTECTONIC CORRELATION CHART FOR THE AREA COVERED BY MAPS 1514A TO 1529A ARE AVAILABLE SEPARATELY AS SHEETS 1530A AND 1532A



INDEX MAP



NTS REFERENCE AND INDEX TO GSC MAPS SHOWING LINES OF SECTION FOR STRUCTURE SECTIONS. SEE SHEET 1530A ('Operation Porcupine' outlined by shaded area)

Library / Bibliothèque  
Geological Survey of Canada  
Commission Géologique du Canada  
Ottawa, Canada K1A 0E8



MAP 1525A  
**MARTIN HOUSE**  
YUKON - NORTHWEST TERRITORIES

1525 A

NOT TO BE TAKEN FROM LIBRARY  
NE PAS SORTIR DE LA BIBLIOTHÈQUE

NOT TO BE TAKEN FROM LIBRARY  
NE PAS SORTIR DE LA BIBLIOTHÈQUE