

QUATERNARY HOLOCENE
Qf Fluvial silt, sand and gravel, in part with cover of organic deposits, undivided
Qff Fluvial deposits of fans and fan aprons, silt, sand and gravel, in part with cover of organic deposits
Ql Lacustrine deposits and minor fluvial deposits; clay, silt, sand and gravel, mostly with cover of organic deposits
Qmm Hummocky or ridged moraine
B Pediments, bedrock surfaces mostly with cover of colluvium and/or organic deposits

CRETACEOUS AND TERTIARY UPPER CRETACEOUS AND LOWER TERTIARY MONSTER FORMATION (KTM1-KTM3)
KTM3 Upper part: conglomerate, chert, quartz- and sandstone-pebble, mesa-forming; fluvial?
KTM2 Middle part: mudstone, silty, sandstone, carbonaceous, conglomeratic, nonmarine?
KTM1 Lower part: sandstone, arkosic, brown weathering, fine grained, marine?

CRETACEOUS LOWER AND UPPER CRETACEOUS EAGLE PLAIN FORMATION (Kw-Kcc1)
Kcc1 Sandstone, fine to medium-grained, light grey; siltstone and shale, nonmarine?
Kb Shale, dark grey, siltstone, dark brown, marine
Kfb Sandstone, fine grained, light grey; shale, dark grey, marine
Kwr Shale, dark grey, siltstone, dark brown, marine

LOWER CRETACEOUS RAT RIVER FORMATION: sandstone, pale brownish grey, conglomeratic; shale, dark grey, marine
KMG MOUNT GODDENOUGH FORMATION: shale, siltstone and sandstone, marine
Kwc Sandstone, fine grained, light grey, variably carbonaceous; marine and nonmarine, may include equivalents of Martin Creek and McIure Formations

JURASSIC AND LOWER CRETACEOUS KINGAK FORMATION: shale, dark grey, siltstone, marine; may include equivalents of Shublik, Porcupine River and Husky Formations

TRIASSIC MIDDLE AND UPPER TRIASSIC Shale, calcareous, black; limestone, black, argillaceous; marine; includes Shublik Formation

PERMIAN LOWER AND MIDDLE PERMIAN TAWANUI FORMATION: limestone, fine grained, skeletal; chert, spicular, marine
Pjc2 Upper part: mudstone, calcareous, cherty; limestone, silty, micritic, marine
Pjc1 Lower part: conglomerate, chert-pebble; sandstone, shale, marine

CARBONIFEROUS UPPER CARBONIFEROUS ETRAIN FORMATION: limestone, light grey and orange weathering, skeletal, cherty, marine
Cb Sandstone, brown weathering; conglomerate; limestone, skeletal; marine
CHR HART RIVER FORMATION: brownish grey weathering, skeletal, micritic, dolomite; chert, marine; may include equivalents of Ford Lake Shale and Blackie Formation

DEVONIAN AND CARBONIFEROUS UPPER DEVONIAN AND LOWER CARBONIFEROUS FORD LAKE SHALE: shale, greyish black, siliceous; chert and limestone; marine; may include Canol and Imperial Formations

DEVONIAN UPPER DEVONIAN Dca CANOL FORMATION: shale, black, siliceous; marine

LOWER AND MIDDLE DEVONIAN Ogilvie FORMATION: limestone, fine grained, dark grey and black; marine; may include equivalents of Gossage Formation

LOWER DEVONIAN Michelle FORMATION: shale, black, calcareous; limestone, black, richly fossiliferous; dolomite, orange brown weathering

CAMBRIAN TO DEVONIAN UPPER CAMBRIAN TO LOWER DEVONIAN Limestone and dolomite, grey and brown; shale, dark grey to black; marine; may include equivalents of Gossage and Ogilvie Formations

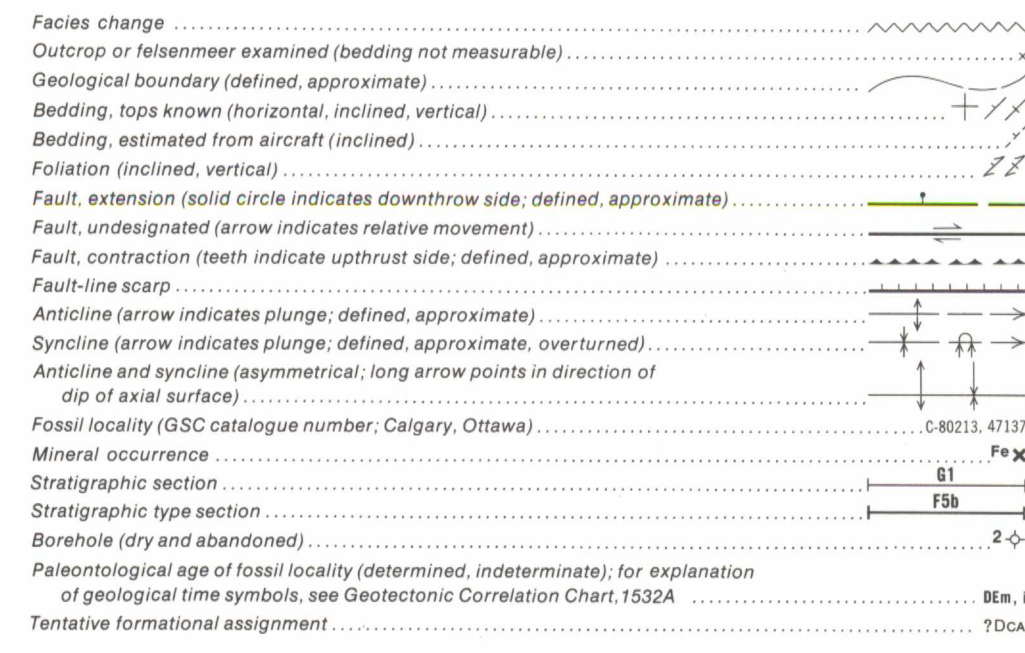
CAMBRIAN AND ORDOVICIAN LOWER CAMBRIAN TO MIDDLE OR UPPER ORDOVICIAN JONES RIDGE LIMESTONE: limestone, biogenic, oolitic, siliceous, massive; marine; may include Ogilvie Formation locally

HADRYNIAN HTI TINDIR GROUP: shale, greyish black; limestone; dolomite; diabase sills and dykes; undivided

HELIKIAN Hg GILLESPIE LAKE GROUP: dolomite, algal, siliceous, orange weathering; undivided; marine

YAPHEBIAN Hs QUARTET GROUP: argillite, red, green and grey, staly; quartzite, fine grained, light grey; marine?

Note: Structure and stratigraphy within Kandik Basin is poorly known and is oversimplified

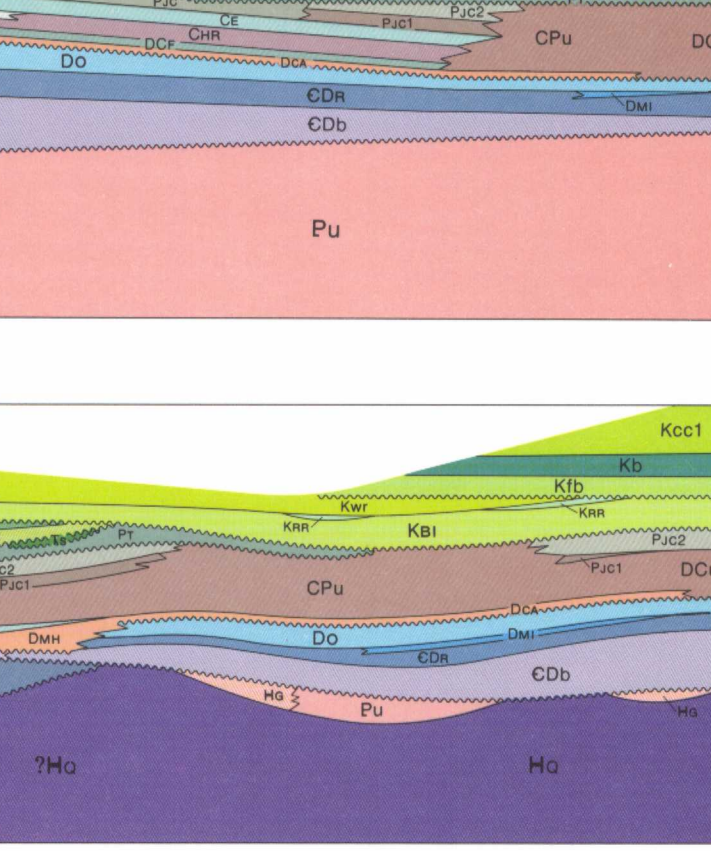


MINERALS
Arsenic As Iron Fe
Barium Ba Lead Pb
Cobalt Co Silver Ag
Copper Cu Zinc Zn

SCHEDULE OF WELLS
1. INC et al. Blawie YTM-35; T.D. 2076 metres
2. Inexo et al. Mallard YTO-18; T.D. 2200 metres
3. Murphy Mesa SP 5; Whitestone YTN-58; T.D. 2132 metres
Note: Well listing is chronological in order of spudding date

ACKNOWLEDGMENTS
Geological synthesis based on field observations and/or paleontological determinations made by the following geologists listed alphabetically, with years of field activity where applicable: Geological Survey of Canada - E.W. Bamber, 1962, 1963, W.A. Bell, L.D. Dyke, 1970, 1973, W.H. Fritz, 1973, W.B. Hopkins, O.L. Hughes, 1962, N.S. Isomades, E.W. Mowley, 1962, B.S. Norford, 1962, A.W. Norris, 1960, 1970, D.K. Norris, 1962, 1970, 1973, 1979, R.A. Price, 1962, G.C. Taylor, 1962, E.T. Tozer, G.R. Turquet, 1962, T.J. Lynn, F.G. Young, 1970, University of Montreal - B.L. Marnet, University of Toronto - J.B. Westhouse

SCHEMATIC STRATIGRAPHIC RELATIONSHIPS
N
W
E

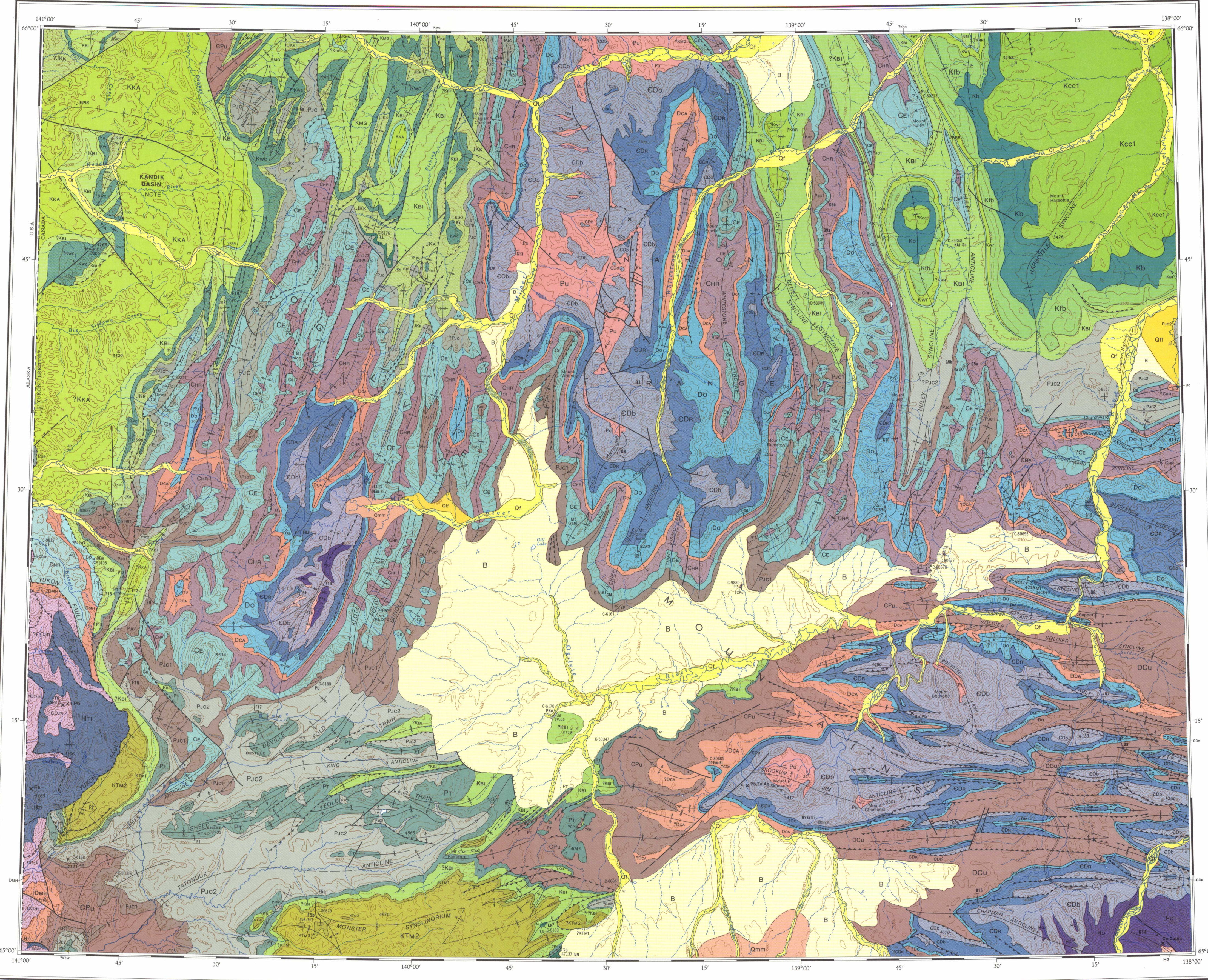
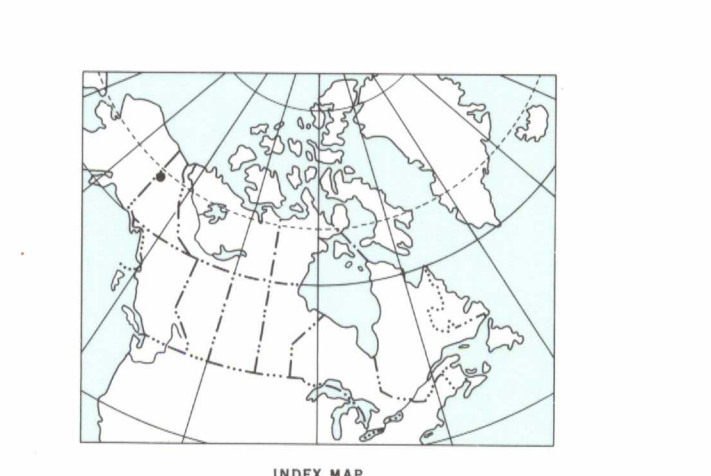
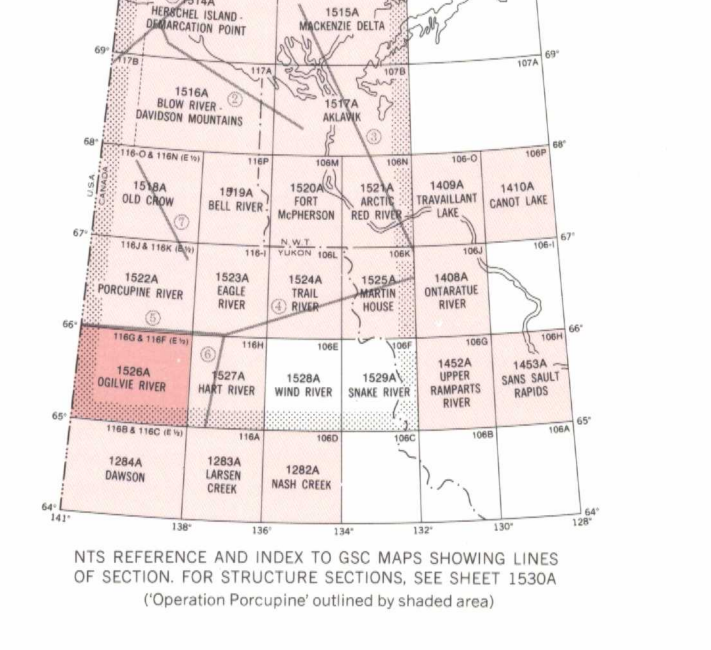


Geological cartography by B.H. Ortman, Institute of Sedimentary and Petroleum Geology, Geological Survey of Canada
Any revisions or additional geological information known to the user would be welcomed by the Geological Survey of Canada

Base map at the same scale published by the Surveys and Mapping Branch in 1974

Copies of the topographical edition of this map may be obtained from the Canada Map Office, Department of Energy, Mines and Resources, Ottawa
Magnetic declination 1981 varies 32°32' E easterly at centre of west edge to 32°33' E easterly at centre of east edge. Mean annual change 4.7' westerly
Elevations in feet above mean sea level

DEVONIAN UPPER DEVONIAN NATION RIVER FORMATION: mudstone, olive grey, sandstone, chert, quartz, conglomerate, chert pebble, nonmarine?
LOWER, MIDDLE (?) AND UPPER DEVONIAN McCANN HILL CHERT: chert, light and dark grey; shale, siliceous; marine and nonmarine



MAP 1526A
GEOLOGY
OGILVIE RIVER
YUKON TERRITORY
Scale 1:250,000
Kilometres 0 4 8 12 16 18 Kilometres
Miles 0 4 8 Miles
Transverse Mercator Projection
© Crown Copyrights reserved

THE STRUCTURE SECTION DIAGRAM AND GEOTECTONIC CORRELATION CHART FOR THE AREA COVERED BY MAPS 1514A TO 1526A ARE AVAILABLE SEPARATELY AS SHEETS 1526A AND 1526A

MAP LIBRARY | CARTOTHEQUE

LIBRARY / BIBLIOTHÈQUE
OCT 15 1982
GEOLOGICAL SURVEY / COMMISSION GÉOLOGIQUE

NOT TO BE TAKEN FROM LIBRARY / NE PAS SORTIR DE LA BIBLIOTHÈQUE

MAP 1526A
OGILVIE RIVER
YUKON TERRITORY

1526A