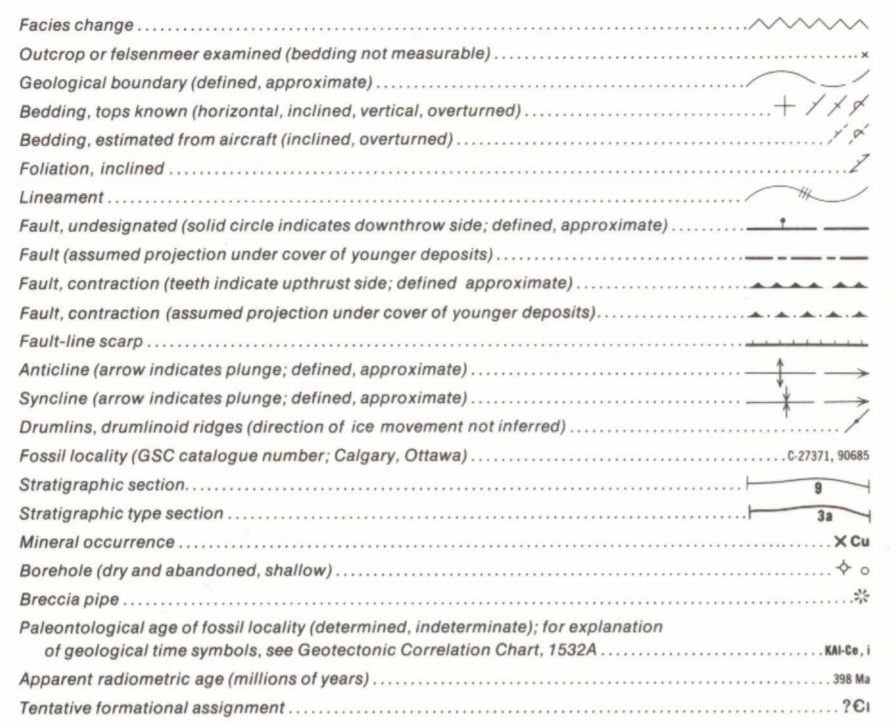
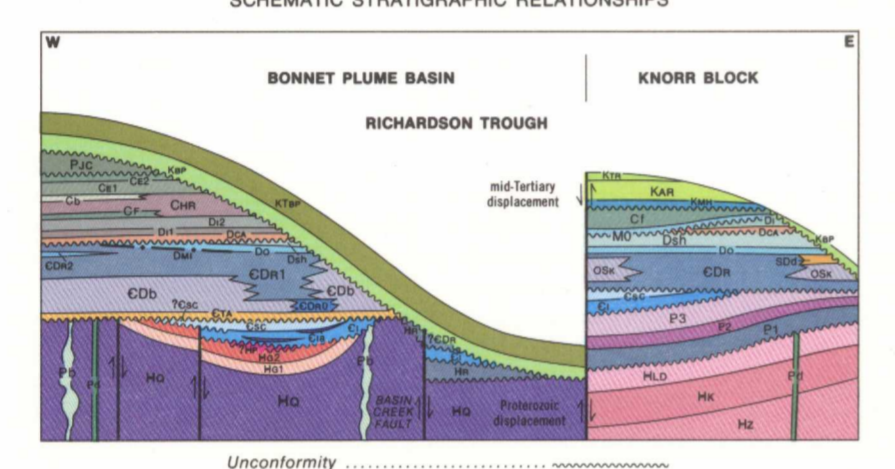


- QUATERNARY: Quaternary deposits; undivided (Qu), Fluvialite silt, sand, and gravel... (Qf), etc.
- CRETACEOUS AND TERTIARY: BONNET PLUME FORMATION (KBP-KTBP), etc.
- PERMIAN: JUNGLE CREEK FORMATION (Pjc1-Pjc3), etc.
- CARBONIFEROUS: ETTRAIN FORMATION (Ce1-Ce2), etc.
- DEVONIAN: IMPERIAL FORMATION (Di1-Di2), etc.
- SILURIAN AND DEVONIAN: ROAD RIVER FORMATION (CDR), etc.
- PRECAMBRIAN: RAPINT GROUP (R1), etc.

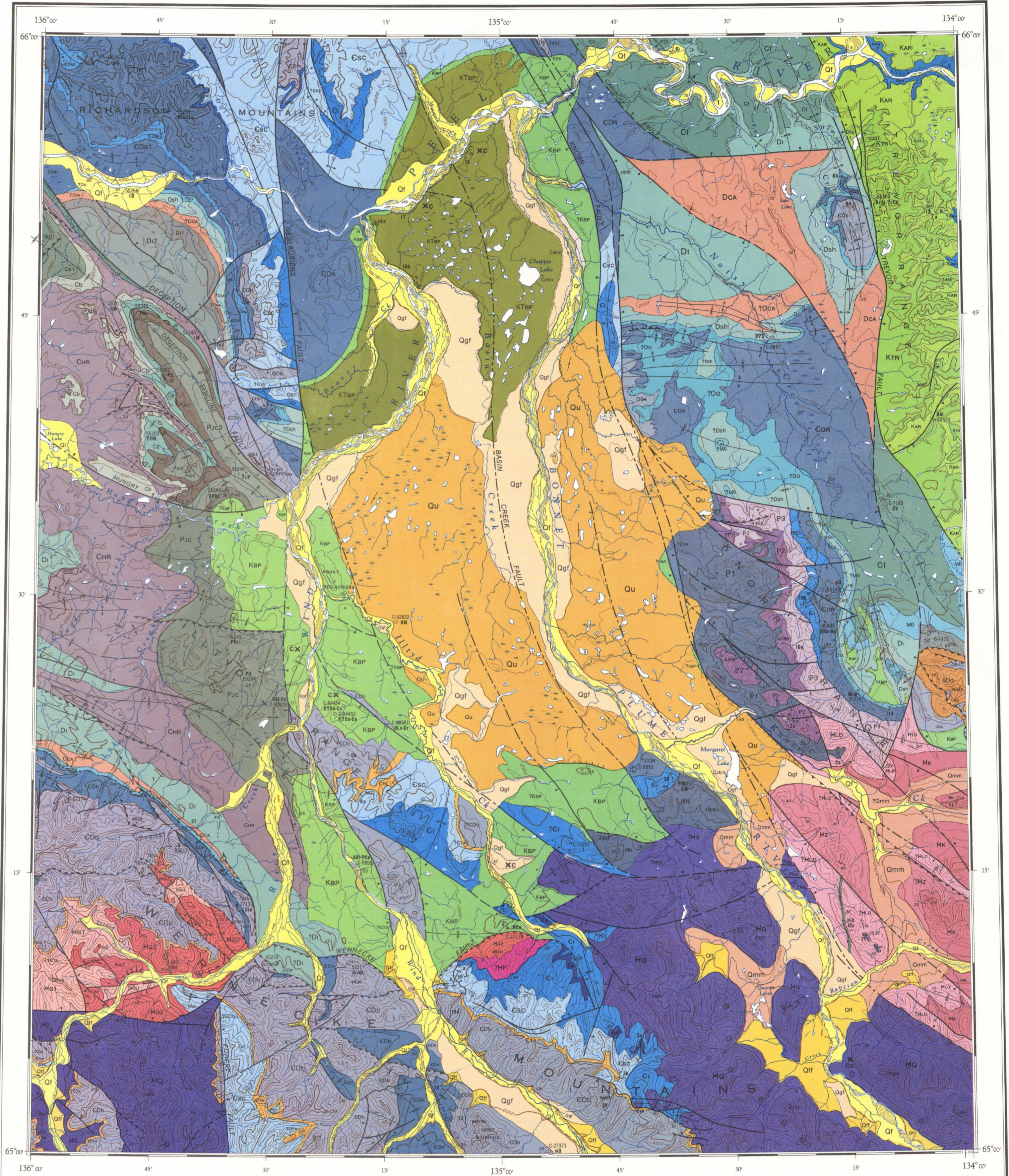


MINERALS: Copper (Cu), etc.  
WELL SCHEDULE: 1. Toltec Peel River YTN-77, T.D. 1123 m  
SHALLOW BOREHOLE SAMPLES: Pan Ocean Oil Ltd. - coal exploration

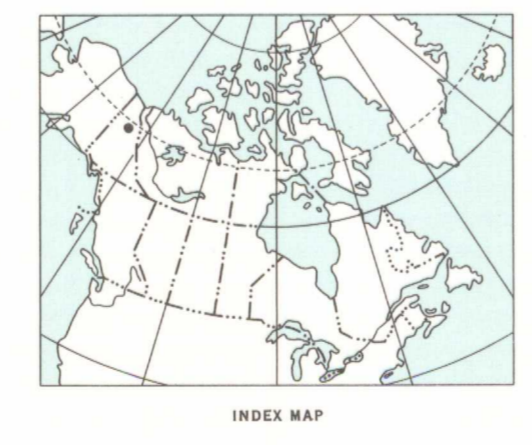
ACKNOWLEDGMENTS: Geological synthesis based on field observations and/or paleontological determinations made by the following geologists and industry geological departments...



Geological cartography by M. D. Wallace, Institute of Sedimentary and Petroleum Geology, Geological Survey of Canada  
Any revisions or additional information known to the user would be welcomed by the Geological Survey of Canada  
Base map at the same scale published by the Surveys and Mapping Branch in 1954  
Copies of the topographical edition of this map may be obtained from the Canada Map Office, Department of Energy, Mines and Resources, Ottawa  
Magnetic declination 1981 varies from 33° 40' 7" easterly at centre of west edge to 32° 46' 0" easterly at centre of east edge. Mean annual change 6.0" westerly  
Elevations in feet above mean sea level

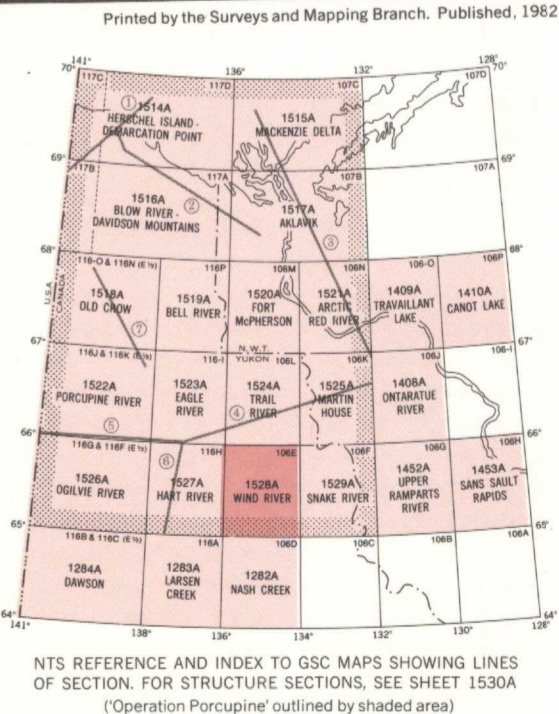


Copies of this map may be obtained from the Geological Survey of Canada, 601 Booth Street, Ottawa, Ontario K1A 0E8, 3303 - 33rd Street N.W., Calgary, Alberta T2L 2A7



MAP 1528A  
GEOLOGY  
**WIND RIVER**  
YUKON TERRITORY  
Scale 1:250,000  
Kilometres 6 0 6 12 18  
Miles 4 0 4 8  
Transverse Mercator Projection  
© Crown Copyrights reserved

THE STRUCTURE SECTION DIAGRAM AND GEOTECTONIC CORRELATION CHART FOR THE AREA COVERED BY MAPS 1514A TO 1529A ARE AVAILABLE SEPARATELY AS SHEETS 1530A AND 1532A



NOT TO BE TAKEN FROM LIBRARY / NE PAS SORTIR DE LA BIBLIOTHÈQUE  
MAP 1528A  
WIND RIVER  
YUKON TERRITORY  
1528A