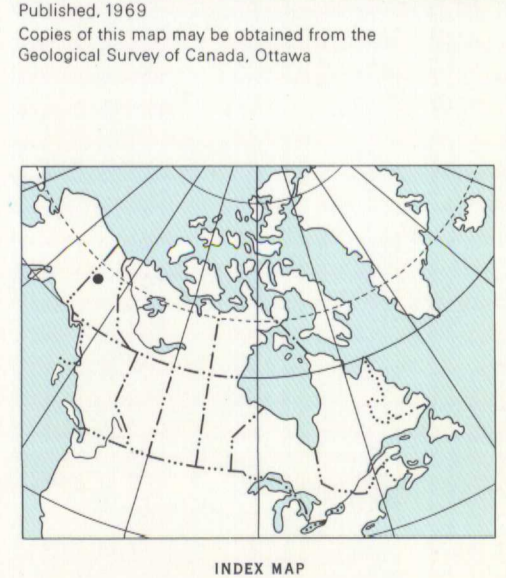
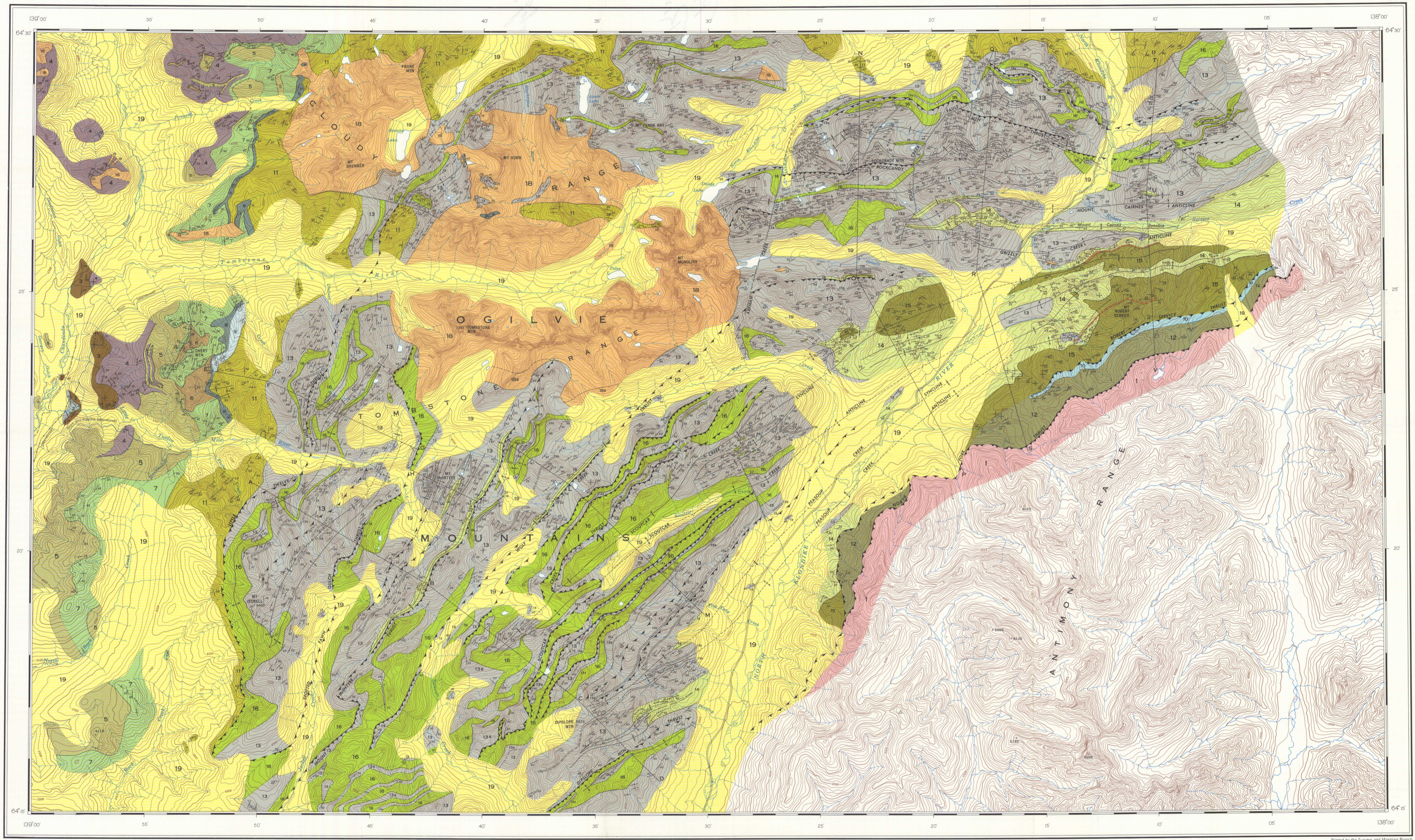


LEGEND

- CENOZOIC**
- QUATERNARY**
 - 19 Drift
 - CRETACEOUS**
 - MIDDLE CRETACEOUS (?)**
 - 18 Amphibole pyroxene syenite, pyroxene amphibole monzonite, hornblende quartz monzonite; medium-to coarse-grained, commonly porphyritic (orthoclase), with trachyoid texture; medium-grained biotite quartz monzonite and biotite quartz diorite near margins; minor granite-related porphyritic biotite latic and pyroxene trachyte dykes; 18a, pseudotachyite lingulate
 - 17 Medium-grained porphyritic (hornblende) diorite
 - LOWER CRETACEOUS (?)**
 - 16 Brown weathering, dark green diabase, tholeiitic diabase and medium-grained gabbro; sheared and altered equivalents
 - 15 Buff to brown weathering, thinly laminated and cross-laminated lime-cemented quartz siltstone with interbedded greyish brown shale; detrital muscovite ubiquitous
 - 14 Pale green and bright red phyllitic siliceous slate with minor pale green argillaceous chert
 - 13 **KENO HILL QUARTZITE?** resistant, thick-bedded, massive, light, medium and dark grey, fine-grained orthoquartzite with lesser interbedded black slate. Includes unfossiliferous 13a and 13b, black slate and phyllite with lesser greenish spotted slate, minor brownish quartz siltstone; 13a, buff weathering, brownish, thick-bedded, fine-grained, sandy limestone with minor interbedded brownish slate
 - JURASSIC**
 - 12 Black, graphitic slate and phyllitic slate with minor interbedded brown siltstone, brownish green argillite at base; ironstone concretions plentiful in lower part
 - 11 **LOWER SCHIST:** black, graphitic slate and phyllitic slate with lesser interbedded chert-pebble conglomerate and immature feldspathic subgreywacke in lower part; minor pale green siliceous phyllite at top
 - TRIASSIC**
 - UPPER TRIASSIC (?)**
 - 10 Dark grey to black shaly and platy, feld micritic limestone; locally contains pelecypod fragments and small chert pebbles
 - LOWER, MIDDLE AND UPPER TRIASSIC**
 - 9 Dark grey, impure fossiliferous, platy micritic limestone (upper part) and thin-bedded, greywacke-like siltstone and shale (lower part)
 - PERMIAN**
 - UPPER PERMIAN**
 - 8 **TAKKANDIT FORMATION:** grey and white, crystalline skeletal limestone, rusty to light grey weathering; partially silicified and dolomitized; chert-pebble conglomerate at base; interbedded black chert in middle part
 - ORDOVICIAN AND SILURIAN**
 - 7 **ROAD RIVER FORMATION:** grey, black and pale green, thick-bedded chert with interbedded black slate (lower part); greenish grey argillite and siliceous argillite with minor interbedded black crystalline limestone (upper part)
 - CAMBRIAN (?)**
 - 6 Brownish weathering, thin-bedded siltstone with minor interbedded greenish shale and chert
 - CAMBRIAN (?) - SILURIAN (?)**
 - 5 Greenish grey weathering, massive, altered, amygdaloidal augite basalt with lesser lapilli tuff and volcanic breccia; calcite filled vesicles and fractures; minor interbedded shale and grey crystalline limestone
 - PROTEROZOIC AND/OR CAMBRIAN**
 - CAMBRIAN (?)**
 - 4 Massive to thin-bedded, deep maroon and light green slate and argillite; minor chert, limestone and quartz-pebble conglomerate
 - 3 Buff and yellowish weathering, submassive, medium and sized, lime-cemented feldspathic orthoquartzite; minor interbedded siltstone and shale; oncolites in bottom part
 - 2 Massive dark grey and blue-grey, partially recrystallized, silicified and dolomitized, oncotic micritic limestone
 - PROTEROZOIC (?)**
 - 1 Mature, feldspathic subgreywacke-pebble conglomerate with lesser olive green slate, maroon and green slate and dark grey limestone

Geological boundary (defined, approximate, assumed)
 Bedding, tops known (horizontal, inclined, vertical)
 Bedding, tops unknown (inclined)
 Cleavage (inclined, vertical)
 Fault (defined, approximate, assumed)
 Thrust fault (teeth in direction of dip; defined, approximate, assumed)
 Anticline (defined, approximate inferred under drift)
 Syncline (defined, inferred under drift)
 Fossil locality
 Geology by D.J. Tempelman-Kluit 1964, 1965
 To accompany GSC Bulletin 180, by D.J. Tempelman-Kluit
 Geological cartography by the Geological Survey of Canada, 1969

Road, all weather
 Cart track
 Intermittent lake and stream
 Power transmission line
 Horizontal control point
 Marsh
 Sand
 Contours (interval 100 feet)
 Height in feet above mean sea-level
 Base-map compiled and drawn by the Surveys and Mapping Branch, 1961, 1965
 Approximate magnetic declination 1968, 33°05' East, decreasing 3.9' annually



MAP 1248A
GEOLOGY
TOMBSTONE RIVER - UPPER KLONDIKE RIVER
YUKON TERRITORY
Scale 1:63,360
(1 inch to 1 mile)
Miles 0 1 2 3
Metres 1000 0 1000 2000 3000 4000 5000

NOT TO BE TAKEN FROM LIBRARY
NE PAS SORTIR DE LA BIBLIOTHÈQUE

116 9/1	116 9/2	116 9/3
116 9/4	116 9/5	116 9/6
116 9/7	1248A	116 9/8
116 9/9	116 9/10	116 9/11

1248A

NATIONAL TOPOGRAPHIC SYSTEM REFERENCE
TOMBSTONE RIVER - UPPER KLONDIKE
YUKON TERRITORY