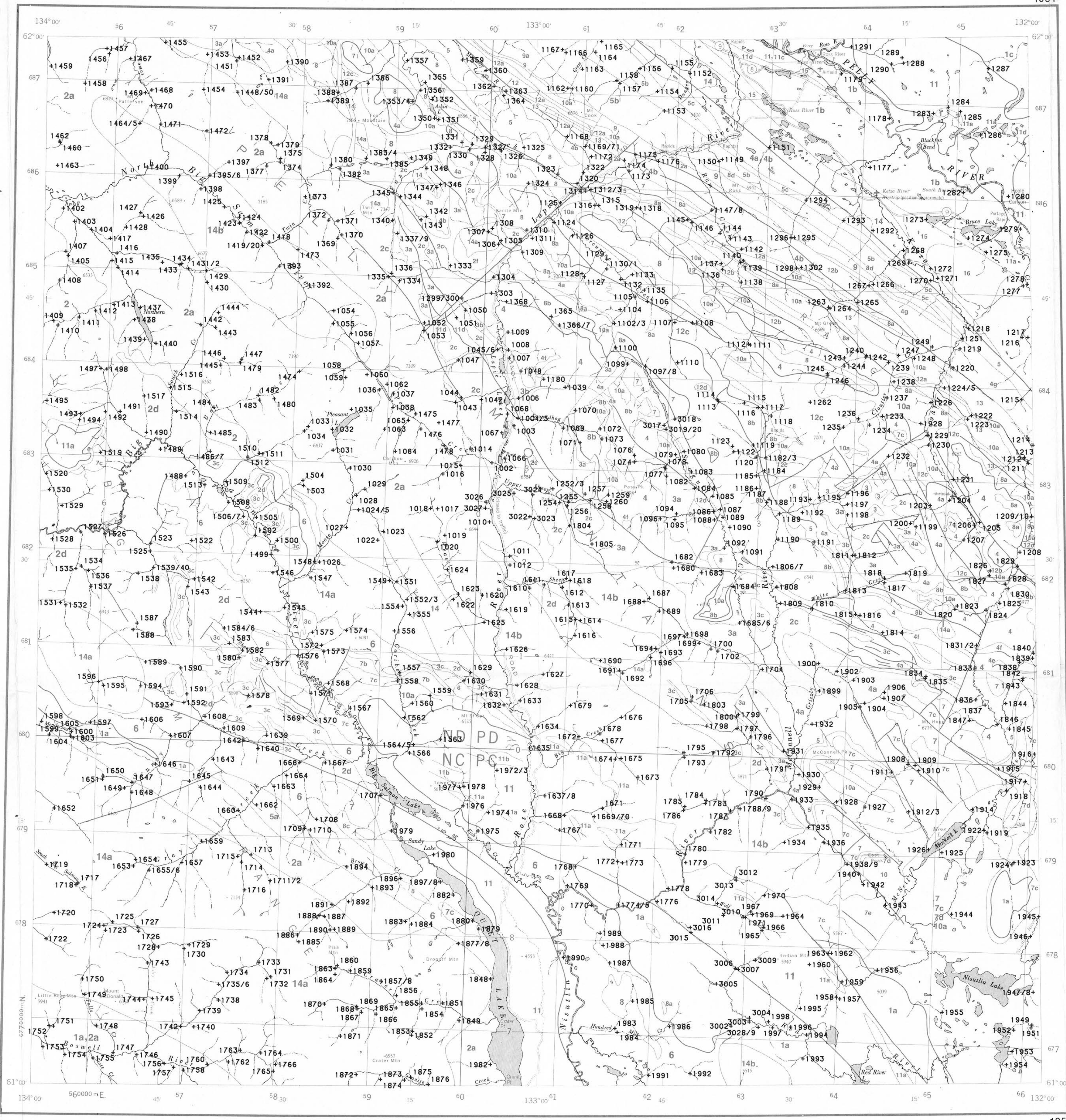


LEGEND



- QUATERNARY OR TERTIARY**
 16 Basalt and basalt breccia (QTvb)
- TERTIARY**
 15 Sandstone, conglomerate and shale (Tscg); 15a, Buff weathering white rhyolite (Tqfp)
- CRETACEOUS**
 14 Quartz-feldspar porphyry dykes (KTqfp); 14a, biotite quartz monzonite (Kqm); 14b, porphyritic biotite quartz monzonite (Kpqm)
- TRIASSIC AND JURASSIC**
 13 Dark grey buff weathering bioclastic limestone (uTsc); 13a, dark green volcaniclastic sandstone (uTjv)
- CARBONIFEROUS**
 12 Thin-bedded interlaminated buff to yellowish siltstone and brown argillite (Cs1); 12a, thin-bedded chert and cherty tuff (Mt); 12b, green and maroon tuff and volcanic breccia (Mv); 12c, rusty, black, white and orange weathering lapilli and sand sized tuff, volcanic breccia and flow rocks (Mva); 12d, equigranular syenite and trachyte (My)
- CARBONIFEROUS AND PERMIAN**
 11 Amphibolite, greenstone and altered basalt (CPav); 11a, dunite, peridotite and pyroxenite (CPAub); 11b, serpentine (CPAs); 11c, gasper-red and apple-green chert and cherty tuff (CPAt); 11d, recrystallized crinoidal limestone (Pc)
- DEVONIAN AND MISSISSIPPIAN**
 10 Chert granite grit and chert pebble conglomerate (uDMcg); 10a, black siliceous slate with interbedded chert granule grit and greywacke (uDMs)
- DEVONIAN (UPPER)**
 9 Basalt, basaltic tuff and breccia; calcareous calcrite (Dvc); 9a, fetid crinoidal limestone with minor interbedded slate (Dc)
- SILURIAN AND LOWER DEVONIAN**
 8 Dolomite, sandy dolomite and dolomitic sandstone (SDdq); 8a, dolomitized laminated mudstone to sucrose dolomite and dolomitized calcarenite (SDd); 8b, coarsely sucrose dolomite and sandy dolomite (SDd1); 8c, crinoidal limestone and dolomite (SDc); 8d, calcareous siltstone and calcareous orthoquartzite (SDsq)
- SILURIAN**
 7 Dolomitic siltstone and silty dolomite (Ss); 7a, lapilli tuff and volcanic breccia with interbedded bioclastic dolomite (Sv); 7b, algal laminate and sparry dolomite, orthoquartzite and sandy dolomite (Sd); 7c, medium-grained mature orthoquartzite (Sq); 7d, laminated to sucrose dolomite (Sd); 7e, thinly laminated white and green hornfels (Sshf)
- ORDOVICIAN, SILURIAN AND DEVONIAN**
 6 Dark grey to black "sooty" lime or dolomitic graphitic siltstone and fine grained impure quartzite with interbedded graphitic silty shale (OSDqc)
- ORDOVICIAN AND SILURIAN**
 5 Black, locally calcareous fissile graptolitic slate; includes thin sills or flows of dark green basalt (OSs1); 5a, quartz biotite and quartz chlorite schist and chlorite amphibolite (OSs1v); 5b, black graphitic siliceous and pyritic slate (OSs1c); 5c, black calcareous graphitic "sooty" slate and silty slate (OSs1c)
- CAMBRIAN AND ORDOVICIAN**
 4 Grey chlorite muscovite quartz phyllite containing lenses of greenstone (uCOs1v); 4a, grey chlorite muscovite quartz phyllite and slaty phyllite (uCOs1); 4b, calcareous shale and silty limestone (uCOc); 4c, ankeritic shale, slate and phyllitic slate (uCOc2); 4d, olive green tuff and tuffaceous slate (EOv); 4e, massive dark green and maroon amygdaloidal basalt (EOvb); 4f, massive saussuritized dark green diabase or diorite sills (Eb); 4g, medium to dark grey calcareous shale, siltstone and argillaceous limestone (EOsDsl)
- LOWER CAMBRIAN**
 3 Coarsely crystalline dolomite (lCd); 3a, grey calcareous argillite, limestone and calcareous siltstone; locally includes biotite schist and quartz tremolite diopside skarn (lC); 3b, grey limestone and argillaceous limestone (lC1); 3c, marble, recrystallized lime mud and bioclastic limestone (lC2)
- PROTEROZOIC AND/OR LOWER CAMBRIAN**
 2 Muscovite biotite granodiorite gneiss (Bns); 2a, muscovite biotite granodiorite gneiss and augen gneiss (Bn); 2b, injection migmatite consisting of muscovite biotite gneiss, augen gneiss and schist with sills and plugs of biotite granite, biotite quartz monzonite, apatite and pegmatite (En); 2c, silty slate and shaly quartzite (lEqs); 2d, muscovite biotite schist, garnet mica quartz schist and micaceous quartzite with minor amphibolite (lEts); 2e, silty slate with some interbedded greywacke (lEts9); 2f, banded hornfels (lEhf)
- AGE UNKNOWN (KLONDIKE SCHIST)**
 1 Light grey weathering marble (Mc); 1a, muscovite quartz blastomylonite, muscovite quartz schist and muscovite quartzite (EPk1); 1b, black siliceous phyllite and amphibole chlorite phyllite (EPk2); 1c, Klondike schist undivided (EPk)
- Geological boundary.....
 Fault.....
 No analytical result.....

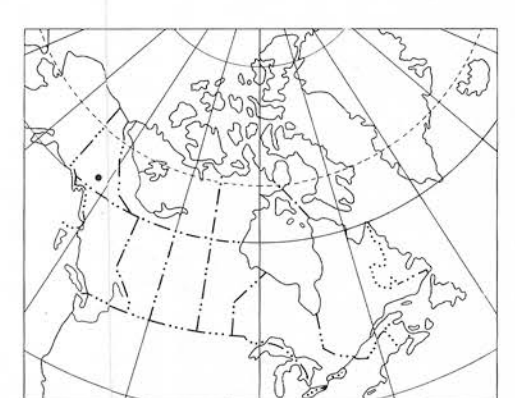
This map forms one of a series of 120 maps released by the Geological Survey of Canada, Open Files 1217, 1218, 1219, 1220, 1289 and 1290. This Open File consists of maps for 9 elements for stream sediments, and one for sample site location. Open File 1290 is an addition to Open File 564 released in 1978.

Copies of map material and listings of field observations and analytical data, from which the material was prepared, may be available at users expense by application to:

K.G. Campbell Corporation
 880 Wellington Street
 Bay 238
 Ottawa, Ontario
 K1R 6K7

The data is also available in digital form. For further information please contact:

The Director
 Computer Science Centre
 Department of Energy, Mines and Resources
 Ottawa, Ontario
 KIA 0E4



SAMPLE LOCATION
 GSC OPEN FILE 1290

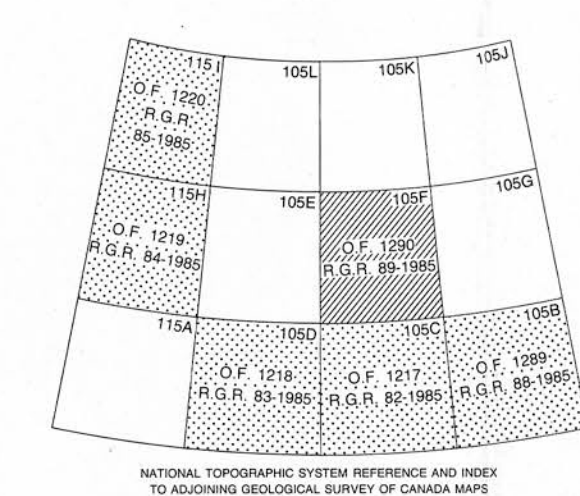
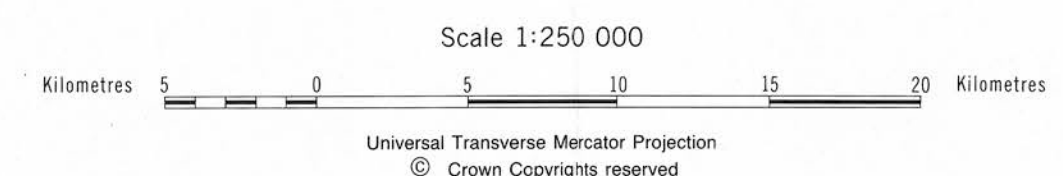
Elevation in feet above mean sea level

Mean magnetic declination 1986, 30°23' East, decreasing 15.6' annually. Readings vary from 29°50'E in the SW corner to 30°57'E in the NE corner of the map area.

SAMPLE LOCATION
 GSC OPEN FILE 1290

REGIONAL GEOCHEMICAL RECONNAISSANCE MAP 89-1985
 URANIUM RECONNAISSANCE PROGRAM
 AND
 CANADA-YUKON ECONOMIC DEVELOPMENT AGREEMENT
 STREAM SEDIMENT AND WATER GEOCHEMICAL SURVEY
 SOUTHERN YUKON TERRITORY 1978/1985

Base map at the same scale published by the Mapping and Charting Establishment, Department of National Defence, 1977



This legend was modified and the geology derived for this geochemical map from Geological Survey of Canada, Open File 486 and Map 7-1960

Geological Survey of Canada
 Resource Geophysics and Geochemistry Division

CONTRACTORS
 Sample collection by BEMA Ltd., Langley, B.C.
 Sample preparation by Golden Associates, Ottawa
 Uranium in sediment chemical analyses by Atomic Energy of Canada Ltd. (1978)
 Other sediment chemical analyses by Chemex Labs Ltd., North Vancouver (1978, 1985)
 and Barringer Magenta Ltd., Rexdale, Ont. (1978, 1980, 1985)
 Water chemical analyses by Barringer Magenta Ltd., Rexdale, Ont. (1978)