



TERRAIN CLASSIFICATION
AND SENSITIVITY SERIES (PRELIMINARY)

1:250,000



MAP UNIT	NAME	GENERAL DESCRIPTION
I	ORGANIC TERRAIN (including muskeg)	Peat, fen; peat-fen complex; commonly occurring as a cover on Till Plain Unit; flat to moderately sloping.
II	RIVER DEPOSITS - COARSE	Gravel and sand in river channels, floodplains, low terraces adjoining rivers, and alluvial fans. Includes some silt, peat and organic silt.
III	RIVER DEPOSITS - FINE	Silt and silty sand in river channels, floodplains, low terraces adjoining rivers and alluvial fans; includes organic silt, peat and minor gravel.
IV	RIVER DEPOSITS - FINE (THERMOKARST)	Thermokarst alluvial floodplains and terraces of low energy streams.
V	TILL PLAINS	Till, occurring as ground moraine with low rolling relief or parallel drumlin ridges. Large areas are clayey to silty till on shale; locally forms a thin veneer on other kinds of bedrock. Includes undifferentiated areas of organic terrain.
VI	HUMMOCKY TILL	Clayey to gravelly-sandy till, local gravel, forming rolling to hilly moraine composed of individual and coalescent hummocks. Local contrasts in material and ground ice between well drained hills and poorly drained depressions. Includes small undifferentiated areas of organic terrain.
VII	GLACIOLACUSTRINE/THERMOKARST PLAIN	Clay and silt, commonly surfaced by sand or silty sand (thin veneer or dune ridges), with discontinuous organic cover.
VIII	GRAVEL-SAND HILLS, RIDGES, PLAINS AND TERRACES	Gravel, sand, and some silt. Includes eskers, and other glaciofluvial deposits, river terraces, and glaciofluvial lacustrine plains (some areas with thermokarst).
IX	GLACIATED UPLAND AND PIEDMONT COMPLEX	Areas of moderate to low slope, in part hilly, surfaced by till, disintegrated bedrock, and local clay, silt, sand or gravel. Unconsolidated deposits generally form a thin veneer over rock but in places they are thick.
X	ERODED AND/OR ERODING RIVER BANKS, COASTAL CLIFFS AND VALLEY WALLS - LARGELY UNCONSOLIDATED MATERIALS	Various unconsolidated materials on moderate to steep slopes; generally with surface veneer of slope debris; includes unstable areas.
XI	AREAS OF RESISTANT BEDROCK (UNGLACIATED) SCARP AREAS WITHIN THIS UNIT SHOWN AS XIa	Areas developed on resistant, cohesive bedrock. This unit consists of mountains, high and low hills, composed of carbonates, chert, granite, quartzites, and conglomerate.
XII	BEDROCK AREAS OF MODERATE RESISTANCE (UNGLACIATED) SCARP AREAS WITHIN THIS UNIT SHOWN AS XIIa	Areas developed on bedrock of moderate resistance. This unit includes mountains, high and low hills composed of sandstone, and siltstone with minor areas of shale.
XIII	BEDROCK AREAS OF LOW RESISTANCE (UNGLACIATED) SCARP AREAS WITHIN THIS UNIT SHOWN AS XIIIa	Areas developed on bedrock of low resistance and cohesion. Includes high and low hills composed of shale, siltstone and minor sandstone.
XIV	PEDIMENT COMPLEX	Pediment Complex
XV	GLACIATED BEDROCK	Cretaceous sandstones, shales. Paleozoic sandstones, shales, quartzites, and carbonates which have undergone glaciation.

Note: Detailed unit descriptions of terrain sensitivity and the performance rating table are presented on a separate sheet which accompanies this map.

SOURCES OF INFORMATION

Hughes, O.L., Surficial Geology Maps, 1:125,000, MTS 116F (Bell River), 116G and 116H (Old Crow), and 106L (Trail River), Geological Survey of Canada, Open File 187, August 1973.

Compiled by R.L. Monroe, 1974.

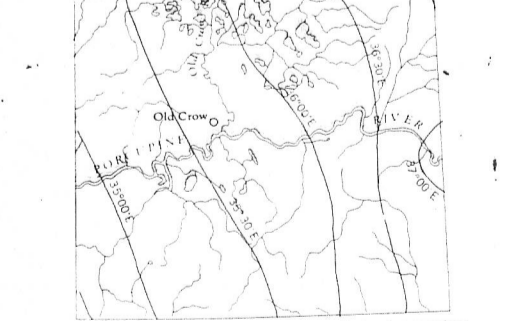
Preliminary map prepared for open file February 1974. Subject to revision and correction.

TERRAIN CLASSIFICATION AND SENSITIVITY SERIES
Produced for
Indian and Northern Affairs
by
Department of Energy, Mines and Resources
as part of
the Environmental-Social Program,
Task Force on Northern Oil Development

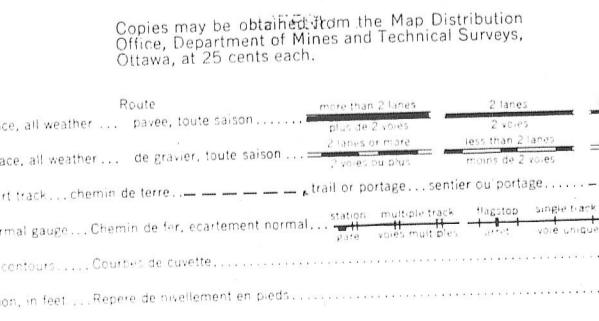
OPEN FILE
210
MAY 1974
GEOLOGICAL SURVEY
OTTAWA

This document was produced
by scanning the original publication.
Ce document est le produit d'une
numérisation par balayage
de la publication originale.

The declination of the compass needle 1958
DÉCLINAISON MAGNÉTIQUE EN 1958



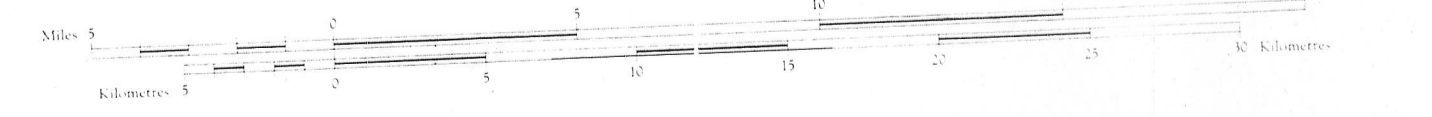
Produced and printed by the SURVEYS AND MAPPING BRANCH,
DEPARTMENT OF MINES AND TECHNICAL SURVEYS, 1959
from air photographs taken in 1951, 1953 and 1954



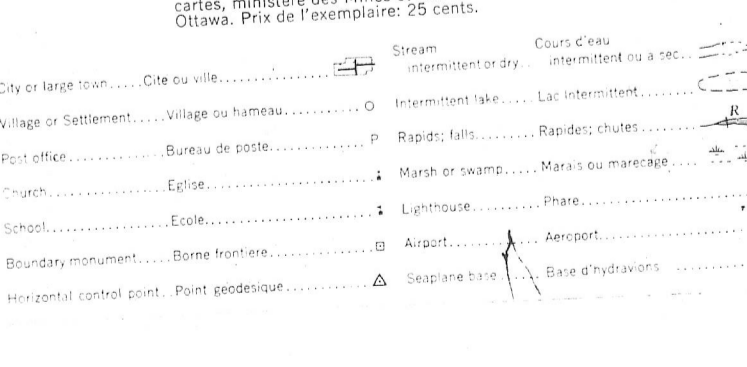
Transverse Mercator Projection
North American Datum 1927
Contour interval 500 feet
Elevations in feet above Mean Sea Level

OLD CROW
YUKON TERRITORY

Scale 1:250,000 Échelle



Établi et imprimé par la DIRECTION DES LEVÉS ET DE LA CARTOGRAPHIE,
MINISTÈRE DES MINES ET DES RELEVÉS TECHNIQUES, en 1955, d'après les
photographies aériennes prises en 1951, 1953 et 1954



Ces cartes sont en vente au Bureau de distribution des
cartes, Ministère des Mines et des Relevés techniques,
Ottawa. Prix de l'exemplaire: 25 cents.

