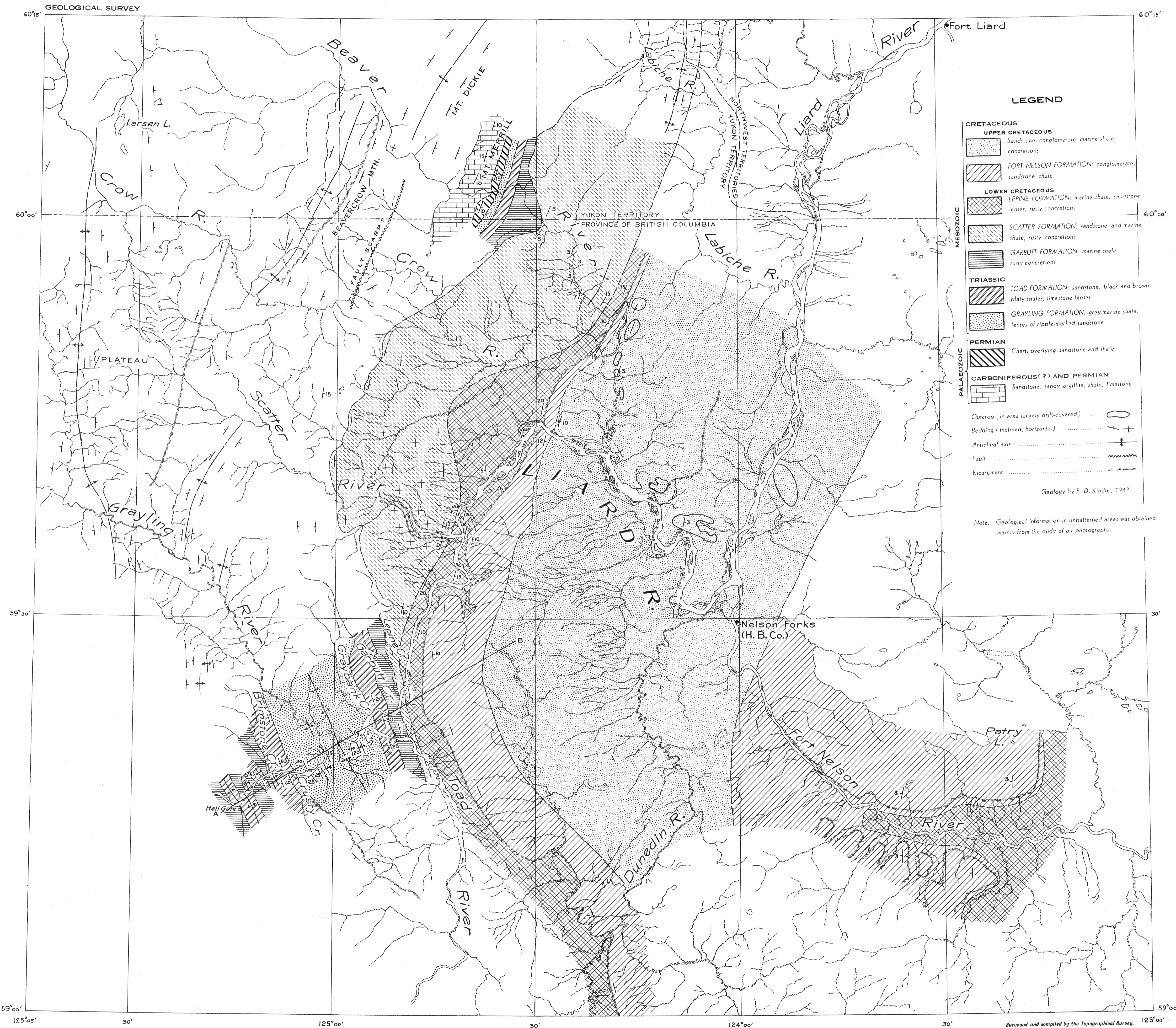


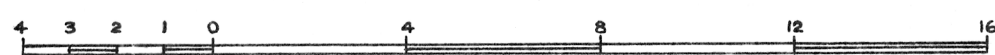
STRUCTURE SECTION ALONG LINE A-B



PRELIMINARY MAP 44-16A

**NELSON FORKS**  
BRITISH COLUMBIA AND YUKON

Scale: 1 inch to 4 miles



Surveyed and compiled by the Topographical Survey, 123°00' Issued 1944.

This document was produced by scanning the original publication.  
Ce document est le produit d'une numérisation par balayage de la publication originale.