

LEGEND

- TERTIARY**
- POST-PALEOCENE**
- 11 Volcanic breccia, tuff, rhyolite, dacite, andesite, basalt
 - 10 Soda syenite
- PALEOCENE**
- 9 Conglomerate, sandstone, shale, coal
- CRETACEOUS**
- 8 Granite porphyry, quartz porphyry
 - 7 Mainly granodiorite; 7a, granite; 7b, porphyritic granite; 7c, diorite; 7d, augen-gneiss
 - 6 Gabbro
 - 5 Peridotite, serpentine; 5a, dunite
- JURASSIC OR CRETACEOUS**
- UPPER JURASSIC OR LOWER CRETACEOUS**
- 4 Sandstone, slate, greywacke, quartzite, chert, tuff, conglomerate, argillite
- JURASSIC OR EARLIER**
- 3 Andesite, basalt, tuff, dacite, rhyolite, volcanic breccia, crystalline limestone, slate, greywacke, argillite, coal
- CARBONIFEROUS OR PERMIAN**
- 2 Limestone, marble, slate, quartzite, schist
- YUKON GROUP**
- 1 Quartz-mica schists, gneiss; slate, quartzite, crystalline limestone; greenstone and chlorite schist

- Heavily drift-covered area
- Crystalline limestone
- Esker
- Bedding (horizontal, inclined, vertical, overturned)
- Schistosity, gneissosity (inclined, vertical)
- Fault
- Anticlinal axis
- Synclinal axis
- Glacial striae
- Fossil locality
- Mineral occurrence
- Placer deposits

MINERAL SYMBOLS

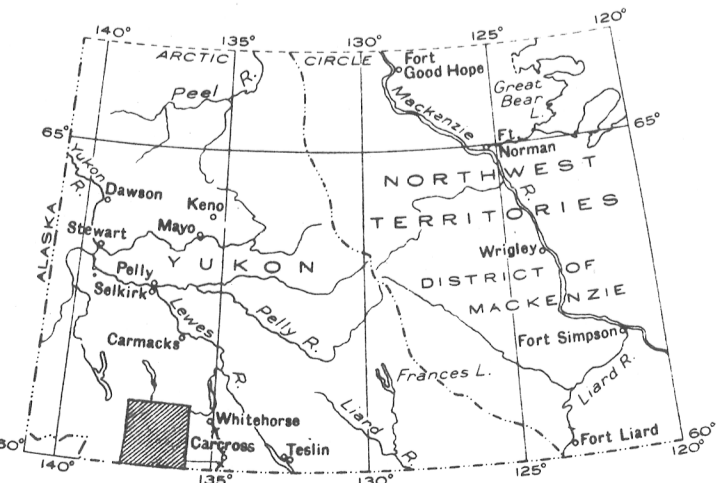
- Platinum.....Pt
- Copper.....Cu
- Gold.....Au
- Lead.....Pb
- Coal.....C
- Chromium.....Cr

Geology by E. D. Kindle, 1946, 1947 and 1948

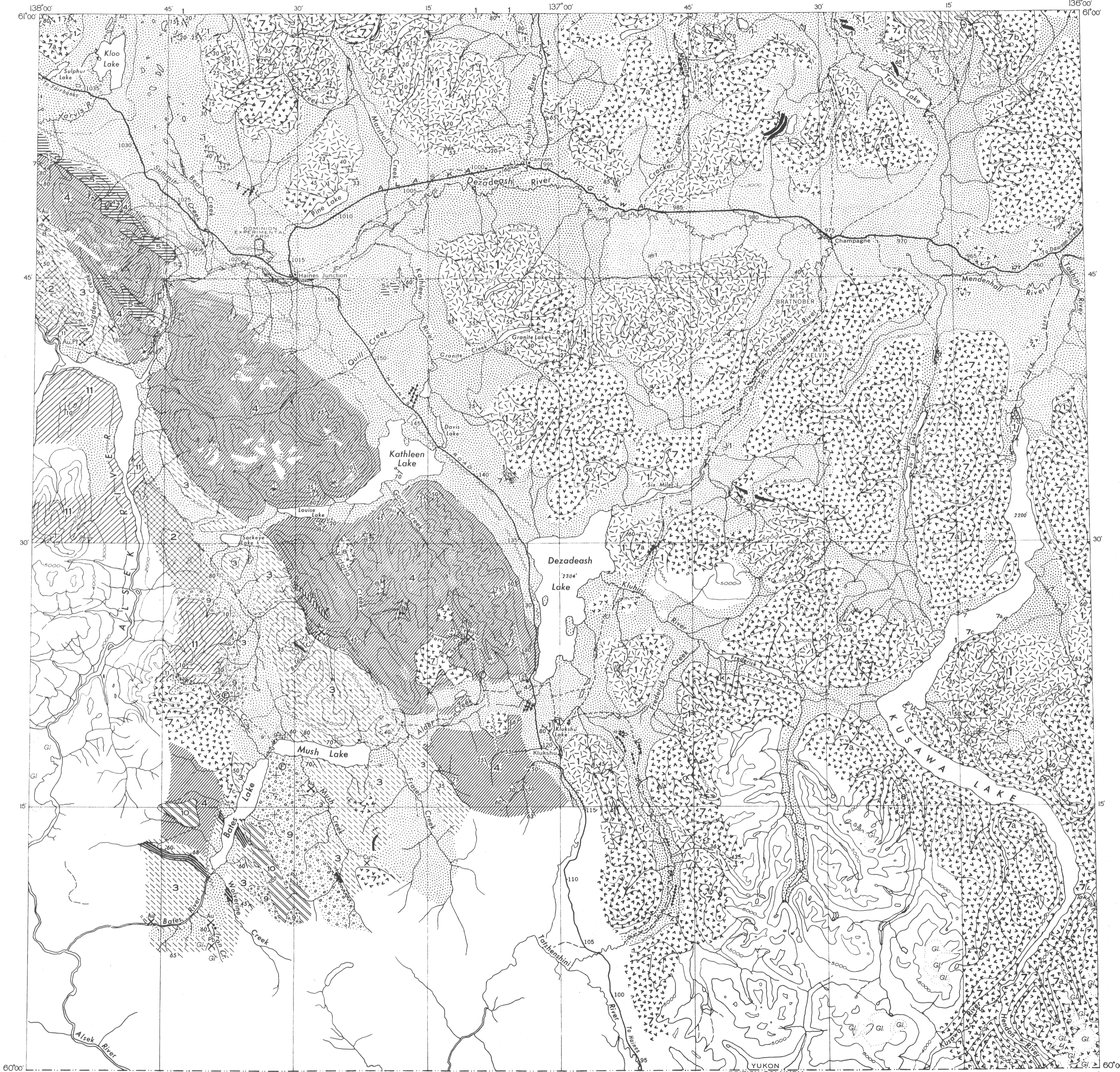
- Road well travelled (with mileage)
- Trail and cabin
- Glacier
- Contour (interval 1,000 feet)
- Height in feet above mean sea level

Base map by Topographical Survey
Cartography by Geological Mapping Division 1949

Geographic names subject to revision
Approximate magnetic declination 32° East.



GEOLOGICAL SURVEY OF CANADA



PRELIMINARY MAP 49-24A
DEZADEASH
YUKON TERRITORY

Scale 1 Inch to 4 Miles = 1 : 253,440



This document was produced by scanning the original publication.
Ce document est le produit d'une numérisation par balayage de la publication originale.