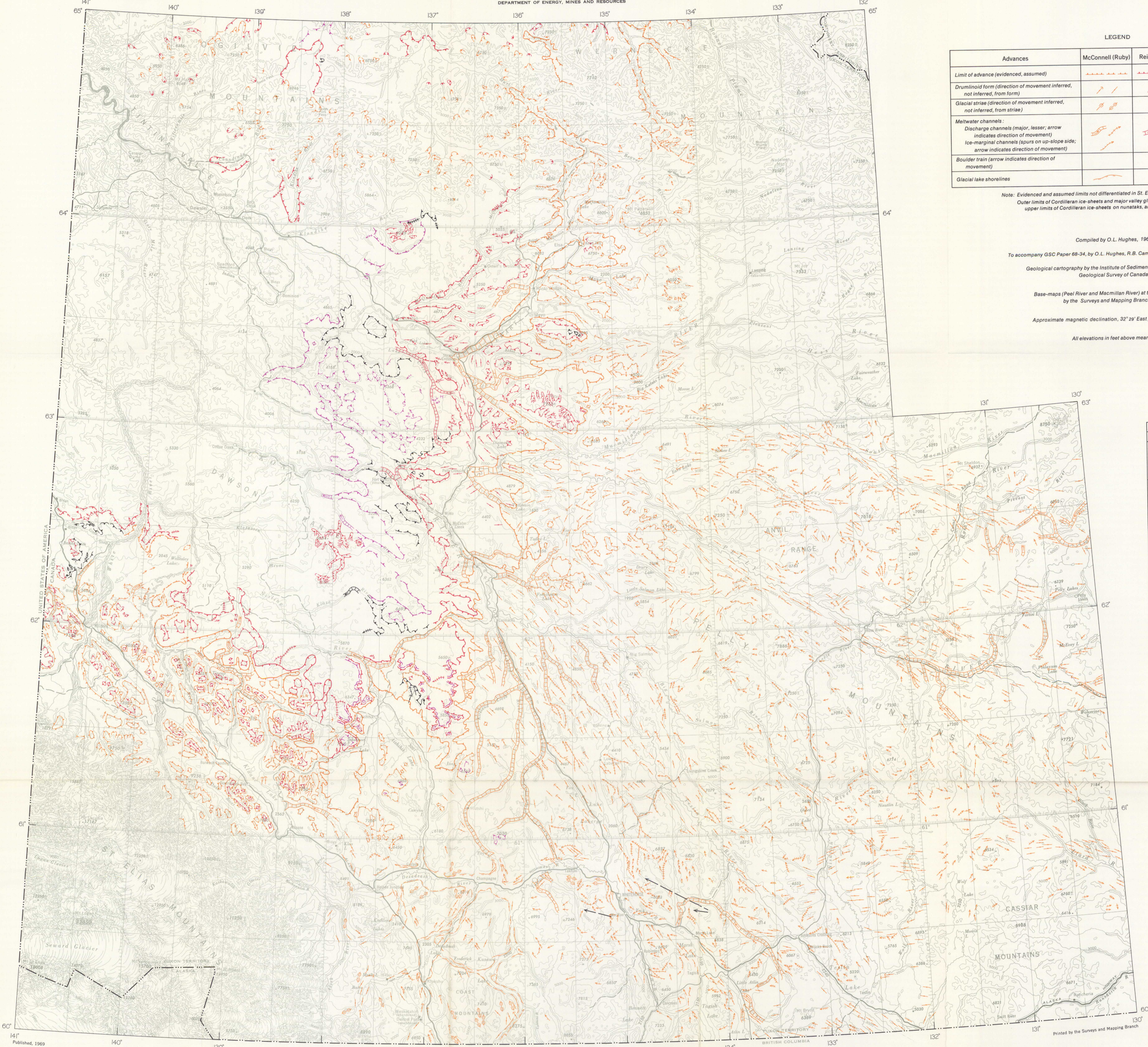




GEOLOGICAL SURVEY OF CANADA
DEPARTMENT OF ENERGY, MINES AND RESOURCES

PRELIMINARY SERIES



Advances	McConnell (Ruby)	Reid (Nisling)	Pre-Reid	Uncorrelated phenomena
Limit of advance (evidenced, assumed)	—	—	—	—
Drumlinoid form (direction of movement inferred, not inferred, from form)	—	—	—	—
Glacial striae (direction of movement inferred, not inferred, from striae)	—	—	—	—
Meltwater channels: Discharge channels (major, lesser; arrow indicates direction of movement) Ice-marginal channels (spurs on up-slope side; arrow indicates direction of movement)	—	—	—	—
Boulder train (arrow indicates direction of movement)	—	—	—	—
Glacial lake shorelines	—	—	—	—

Note: Evidenced and assumed limits not differentiated in St. Elias map-area (115 G and 115 F / E 1/2)
Outer limits of Cordilleran ice-sheets and major valley glaciers are accentuated compared with upper limits of Cordilleran ice-sheets on nunataks, and limits of minor valley glaciers.

Compiled by O.L. Hughes, 1967, 1968

To accompany GSC Paper 68-34, by O.L. Hughes, R.B. Campbell, J.E. Muller and J.O. Wheeler

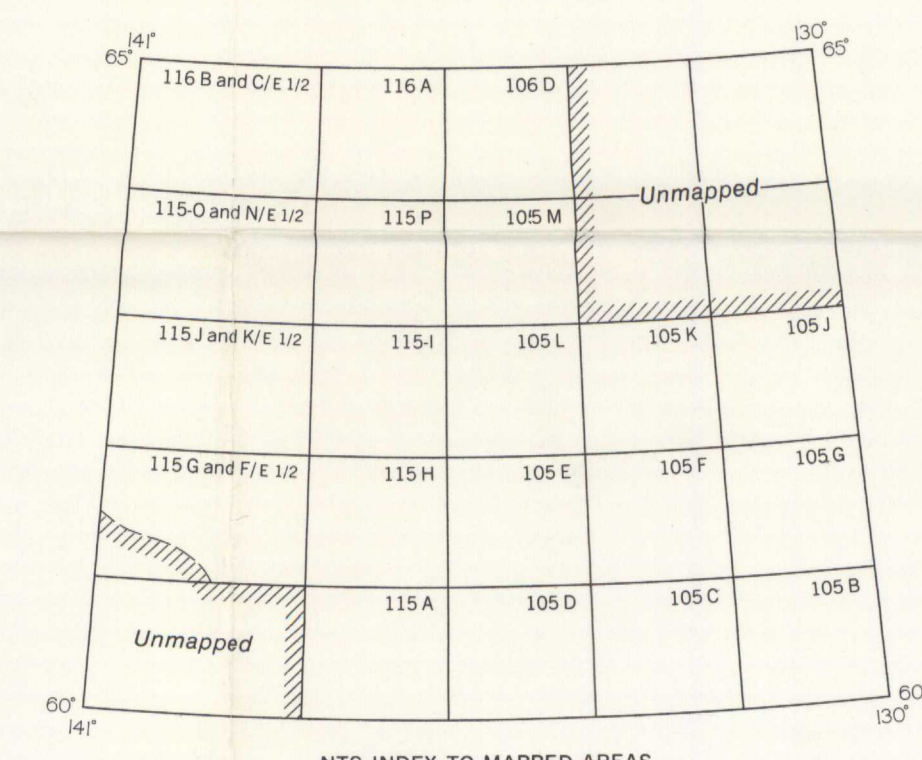
Geological cartography by the Institute of Sedimentary and Petroleum Geology, Geological Survey of Canada, 1969

Base-maps (Peel River and Macmillan River) at the same scale published by the Surveys and Mapping Branch, 1959, 1965

Approximate magnetic declination, 32° 20' East, decreasing 4.1' annually

All elevations in feet above mean sea-level

SOURCES OF MAP DATA		
N.T.S. No.	Map-area	Sources
105 B	Wolf Lake	
105 C	Testin	
105 F	Quiet Lake	Wheeler, J.O. unpublished photo-interpretation maps
105 G	Finlayson Lake	
105 J	Sheldon Lake	
105 K	Tay River	
105 D	Whitehorse	Wheeler, J.O. (1961); adapted by J.O. Wheeler
105 E	Laherge	Campbell, R.B. unpublished photo-interpretation map
105 L	Glenlyon	Campbell, R.B. (1967); adapted by R.B. Campbell
105 M	Mayo	Bostock, H.S. (1966) Hughes, O.L. unpublished map
115 A	Dezadeash	Kindie, E.D. (1953); adapted by J.O. Wheeler Campbell, R.B. unpublished photo-interpretation map
115 G and F/E 1/2	Kluane Lake	Muller, J.E. (1967); adapted and reinterpreted by J.E. Muller
115 H	Aishihik Lake	Hughes, O.L. unpublished map Campbell, R.B. unpublished photo-interpretation map
115 I	Carmacks	Bostock, H.S. (1966)
115 O and N/E 1/2	Stewart River	Hughes, O.L. unpublished photo-interpretation maps
115 P	McQuesten	McQuesten, V.A. unpublished maps; adapted by O.L. Hughes
115 J and K/E 1/2	Snag	Rampson, V.A. unpublished maps; adapted by O.L. Hughes
106 D	Nash Creek	Vernon, P. and Hughes, O.L. (1966); adapted by O.L. Hughes
116 A	Larsen Creek	
116 B and C/E 1/2	Dawson	



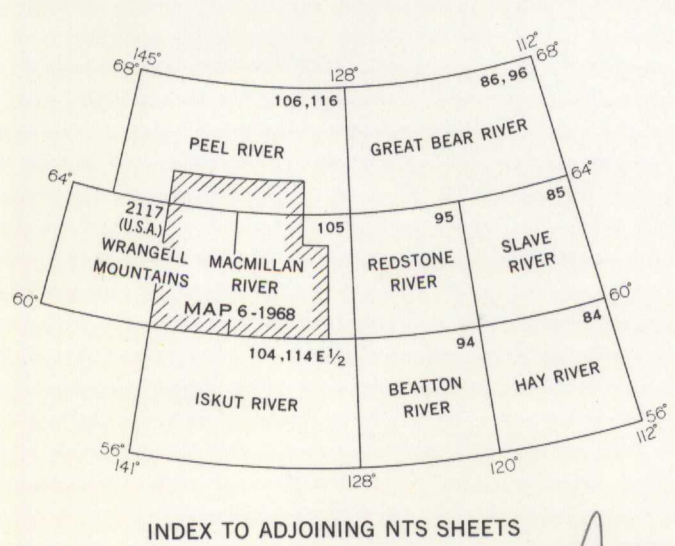
MAP LIBRARY / CARTOTHEQUE



MAP 6-1968
PAPER 68-34
**GLACIAL MAP OF YUKON TERRITORY
SOUTH OF 65 DEGREES NORTH LATITUDE**

Scale 1:1,000,000
1 inch to 15.78 miles

Miles 0 20 40 60
Kilometres 0 25 50 75 100



MAP 6-1968
GLACIAL MAP OF YUKON TERRITORY

3401
.05
1956
G-4
omvfc

NOT TO BE REPRODUCED OR TRANSMITTED IN ANY FORM OR BY ANY MEANS, ELECTRONIC OR MECHANICAL, INCLUDING PHOTOCOPYING, RECORDING, OR BY ANY INFORMATION STORAGE AND RETRIEVAL SYSTEM.

NE PAS REPRODUIRE NI TRANSMETTRE DE CUNE MANIERE, ELECTRONIQUE OU MECANIQUE, Y COMPRIS LE PHOTOCOPIAGE, L'ENREGISTREMENT, OU PAR N'IMPORTE QUEL SYSTEME DE STOCKAGE ET DE RECUPERATION D'INFORMATION.

6-1968

This map has been produced from a scanned version of the original map
Reproduction par numérisation d'une carte sur papier