

**Table 3-2: Water Quality in Vangorda Creek, near the Town of Faro  
 at Station V8 (2003 to 2010)**

Date	Sulphate (mg/L)	Zinc (Total) (mg/L)	Copper (mg/L)	TSS (mg/L)
14-Jan-03	143	0.04	0.027	5
15-Feb-03	152	0.033	0.008	14
6-Mar-03	146	0.014	0.013	4
15-Apr-03	172	0.018	0.01	3
13-May-03	61	0.025	0.001	12
14-Jun-03	42	0.03	0.031	11
17-Jun-03	43	0.026	0.024	6
14-Jul-03	107	0.054	0.021	9
11-Aug-03	225	0.071	0.048	5
3-Sep-03	109	0.015	0.02	2
8-Sep-03	88	0.019	0.036	1
15-Sep-03	75	0.015	0.021	2
14-Oct-03	95	0.02	0.019	1
15-Nov-03	97	0.015	0.014	2
13-Dec-03	134	0.014	0.013	1
15-Dec-03	117	0.014	0.013	1
12-Jan-04	133	0.017	0.016	2
16-Feb-04	148	0.017	0.017	1
14-Mar-04	153	0.022	0.01	1
15-Mar-04	154	0.013	0.001	3
15-Apr-04	159	0.013	0.02	1
14-May-04	44	0.032	0.008	84
14-Jun-04	43	0.018	0.002	25
12-Jul-04	144	0.013	0.001	1
9-Aug-04	327	0.021	0.001	2
13-Sep-04	109	0.010	0.0010	2
12-Oct-04	100	0.010	0.0010	1
15-Nov-04	115	0.011	0.0010	1
3-Dec-04	130	0.016	0.0010	1
21-Jan-05	159	0.012	0.0010	2
8-Feb-05	155	0.014	0.0010	1
15-Mar-05	176	0.009	0.0010	1
11-Apr-05	175	0.011	0.0010	1
9-May-05	33	0.037	0.0060	67
20-Jun-05	133	0.022	0.0020	2
25-Jul-05	238	0.024	0.0020	10
22-Aug-05	312	0.015	0.0010	1
5-Sep-05	102	0.026	0.0010	1
11-Oct-05	82	0.007	0.0010	1
1-Nov-05	112	0.031	0.0450	1
15-Dec-05	139	0.022	0.0010	1
24-Jan-06	166	0.015	0.0010	1
13-Feb-06	191	0.017	0.0010	1
24-Mar-06	204	0.019	0.0010	1
25-Apr-06	184	0.013	0.0010	1
17-May-06	52	0.022	0.0060	54
19-Jun-06	35	0.011	0.0030	24
17-Jul-06		0.010	0.0020	12
21-Aug-06	62	0.010	0.0020	13
11-Sep-06	59	0.010	0.0010	4
16-Oct-06	84	0.011	0.0010	11
14-Nov-06	130	0.013	0.0010	1
13-Dec-06	144	0.028	0.0010	1
<b>Trigger</b>	<b>75<sup>a</sup>/171<sup>b</sup></b>	<b>0.042</b>	<b>0.023</b>	<b>8</b>

Date	Sulphate (mg/L)	Zinc (Total) (mg/L)	Copper (mg/L)	TSS (mg/L)
15-Jan-07	165	0.064	0.0010	1
15-Feb-07	163	0.011	0.0010	1
11-Mar-07	201	0.028	0.0010	1
18-Apr-07	185	0.045	0.0010	1
14-May-07	61	0.018	0.0040	7
18-Jun-07	36	0.030	0.0020	13
16-Jul-07	48	0.017	0.0050	52
13-Aug-07	73	0.019	0.0010	2
10-Sep-07	74	0.007	0.0010	1
23-Oct-07	100	0.010	0.0010	1
13-Nov-07	111	0.010	0.0010	2
9-Dec-07	129	0.013	0.0010	2
7-Jan-08	137	0.016	0.0010	1
18-Feb-08	150	0.015	0.0010	2
17-Mar-08	168	0.011	0.0010	2
14-Apr-08	165	0.011	0.0010	1
14-May-08	70	0.022	0.0050	54
16-Jun-08	87	0.035	0.0010	4
14-Jul-08	79	0.025	0.0030	30
11-Aug-08	149	0.019	0.0010	8
15-Sep-08	57	0.020	0.0040	49
15-Oct-08	84	0.013	0.0010	4
3-Nov-08	104	0.019	0.0020	6
1-Dec-08	134	0.035	0.0010	2
12-Jan-09	183	0.015	0.0010	1
2-Feb-09	182	0.018	0.0010	1
3-Mar-09	210	0.014	0.0007	1
6-Apr-09	220	0.014	0.0005	1
6-May-09	45	0.044	0.0078	140
8-Jun-09	48	0.010	0.0013	16
13-Jul-09	190	0.024	0.0025	73
11-Aug-09	170	0.013	0.00104	14
10-Sep-09	110	0.012	0.00010	17
7-Oct-09	91	0.148	0.00070	8
10-Nov-09	110	0.0105	0.00060	4
2-Dec-09	130	0.014	0.00080	5
6-Jan-10	170	0.016	0.00090	4
18-Feb-10	200	0.0126	0.00050	2
30-Mar-10	200	0.0127	0.00060	2
20-Apr-10	160	0.0255	0.00510	130
12-May-10	110	0.0114	0.00210	23
17-Jun-10	59	0.0129	0.00200	48
14-Jul-10	230	0.0190	0.00130	26
4-Aug-10	100	0.0092	0.00090	2
7-Sep-10	97	0.0072	0.00090	3
5-Oct-10	100	0.0075	0.00070	1
2-Nov-10	120	0.0099	0.00090	2
1-Dec-10	150	0.0110	0.00060	2
<b>Trigger</b>	<b>75<sup>a</sup>/171<sup>b</sup></b>	<b>0.042</b>	<b>0.023</b>	<b>8</b>

Note: Italics = Exceeds Trigger Value; a: Open Water Trigger Value; b: Winter Trigger Value;

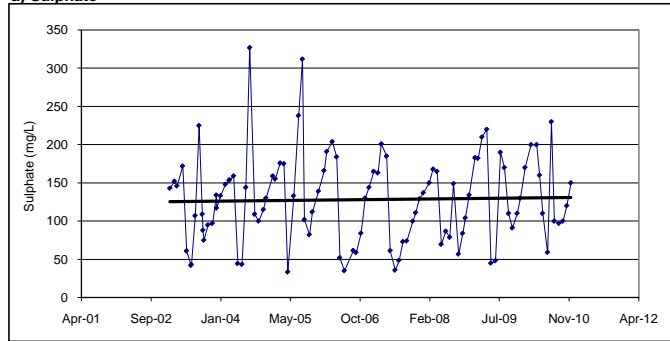
Shaded numbers are "less than" the value indicated.

Note 2: October 7, 2009 TSS was originally reported as 73 mg/L; the retest value is shown.

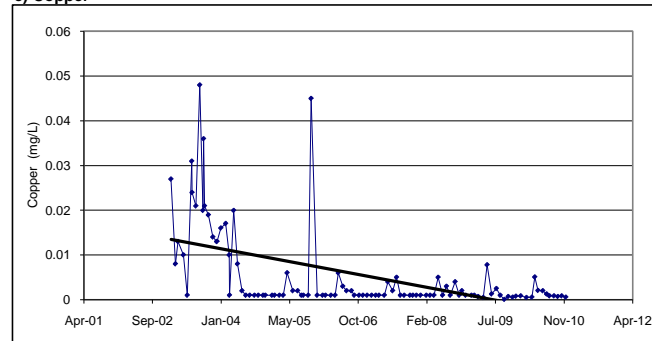
Figure 3-1: Water Quality in Vangorda Creek, near the Town of Faro  
at Site V8 (2003 to 2010)



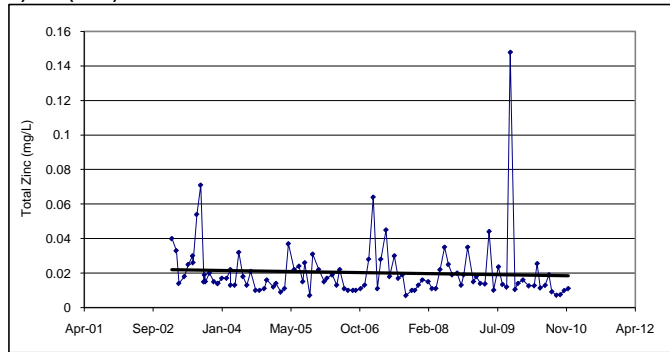
a) Sulphate



c) Copper



b) Zinc (Total)



d) TSS

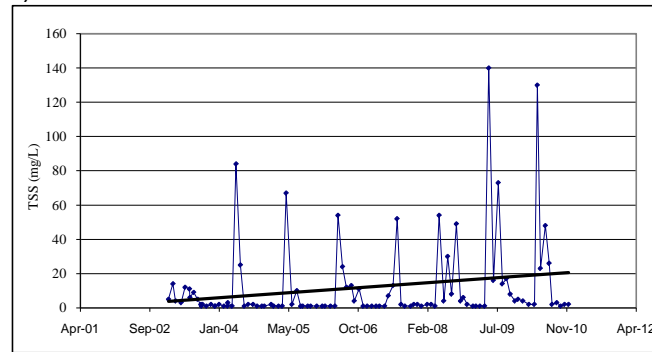


Figure 3-2: Sulphate in Vangorda Creek  
(V19, V27, V8, VG Main + V2BSP) (1998-2010)

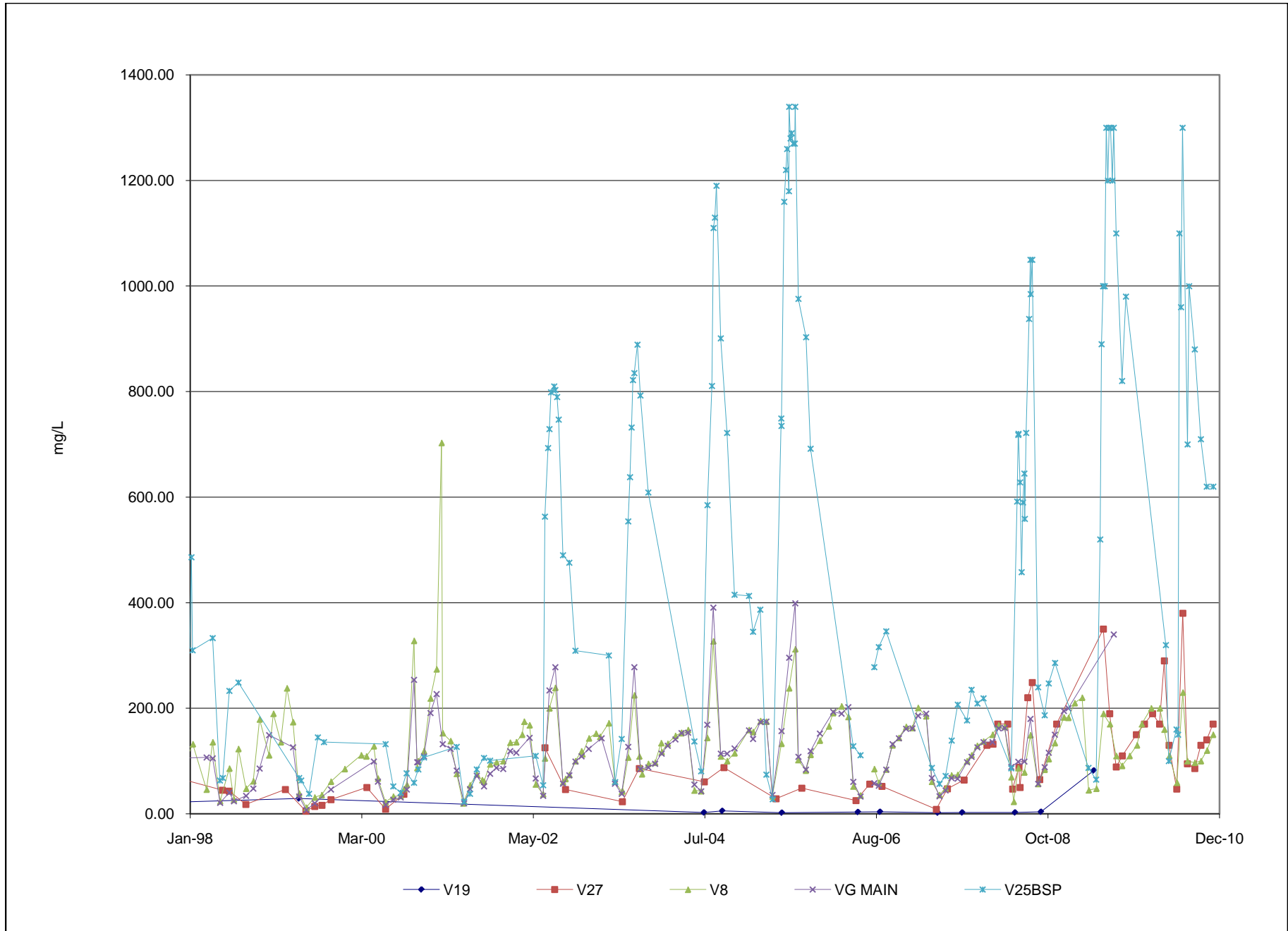


Figure 3-6: Zinc (Total) in Vangorda Creek (V19, V27, V8, VG Main + V2BSP) (1998-2010)

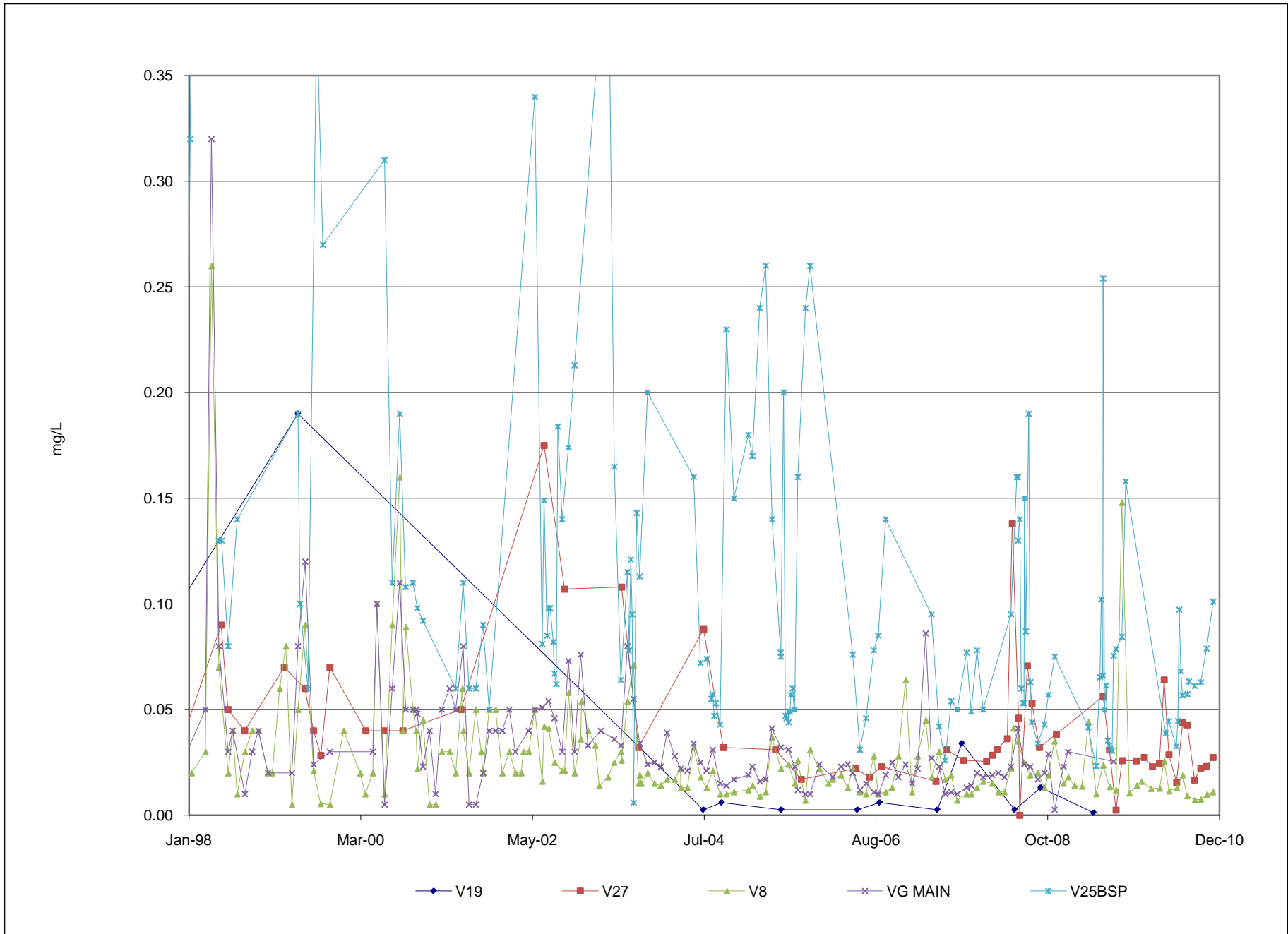


Figure 3-3: Sulphate in Shrimp Creek (V4) and Upstream Inflow (V20)  
(1998-2010)

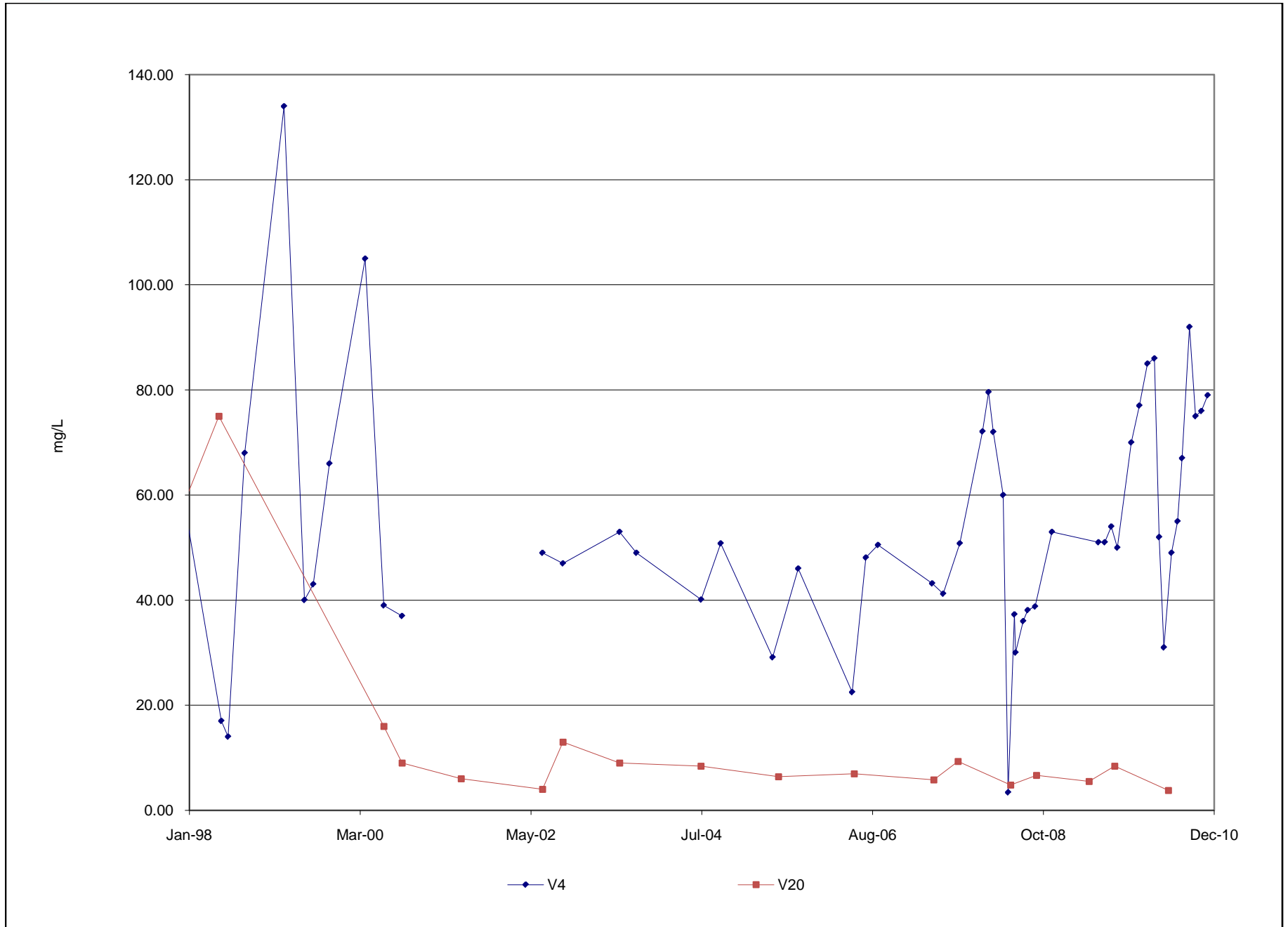




Figure 3-5: Sulphate in the West Fork of Vangorda Creek  
at V17A and V5 (1998-2010)

