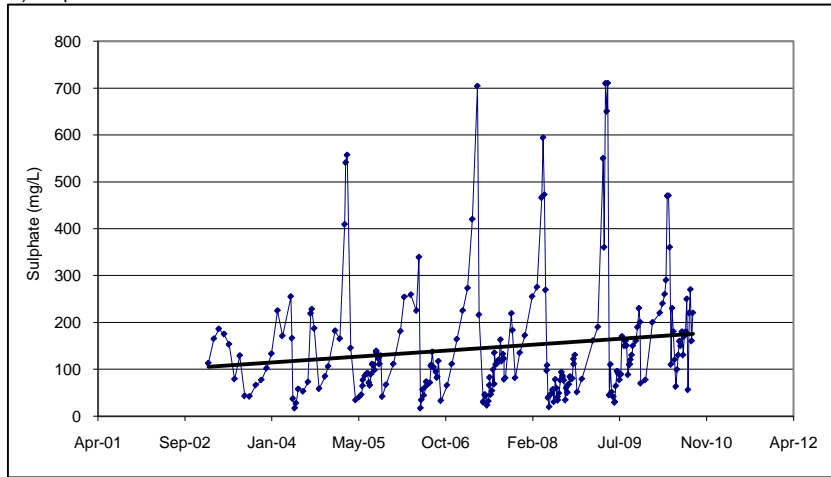


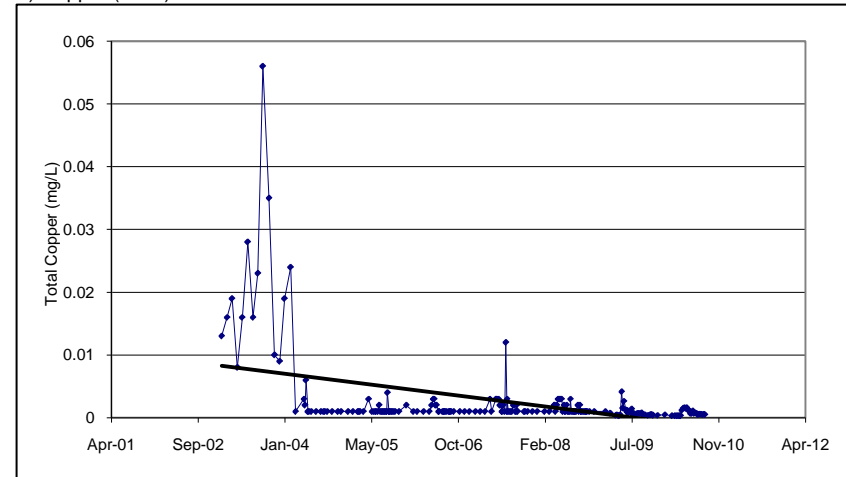
Figure 4-1: Water Quality in Rose Creek Downstream of FMC Activities at Station X14 (2003 to 2010)



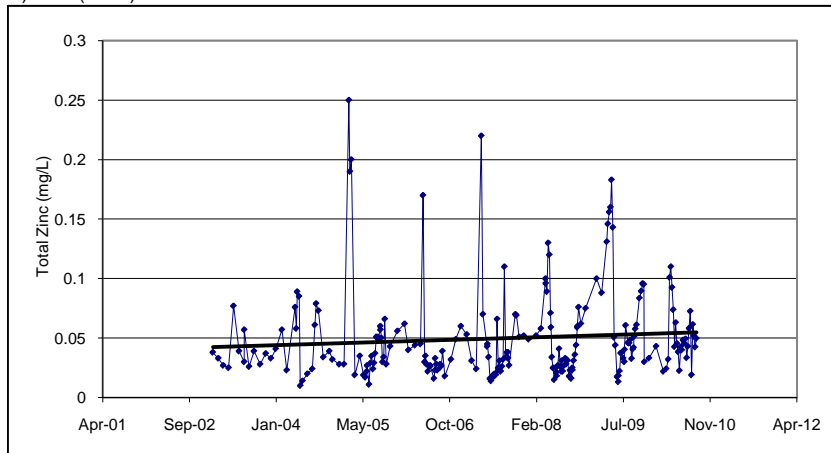
a) Sulphate



c) Copper (Total)



b) Zinc (Total)



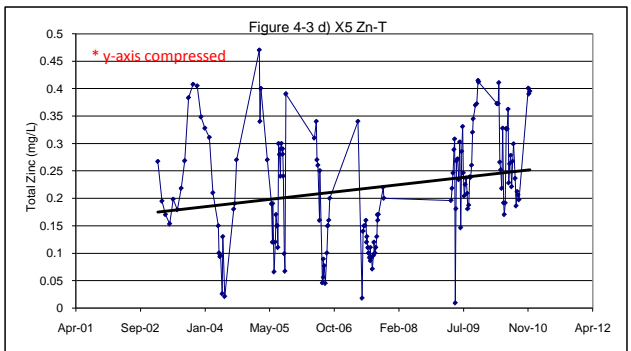
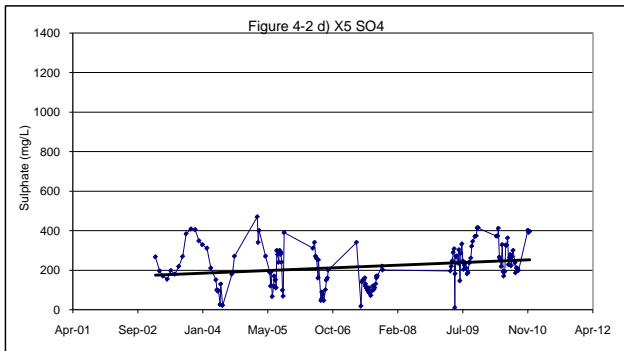
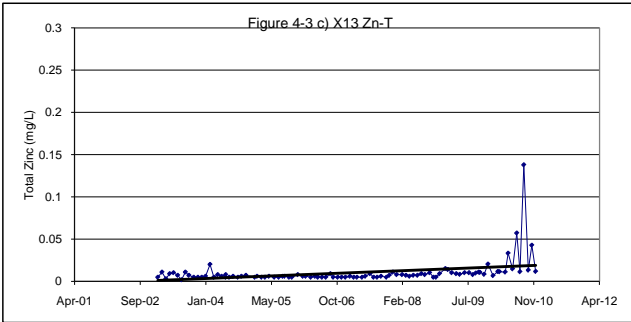
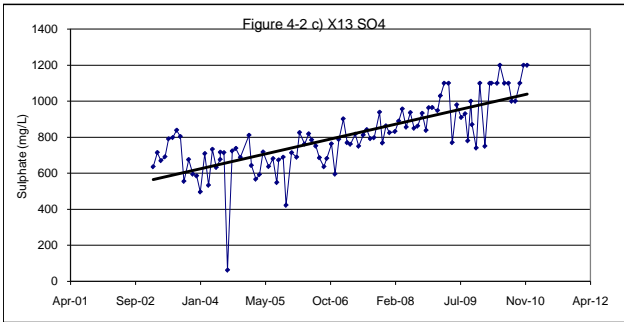
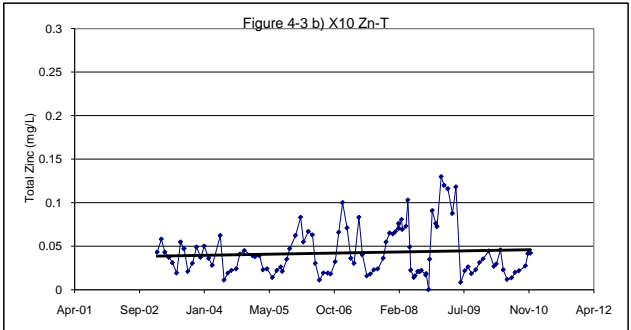
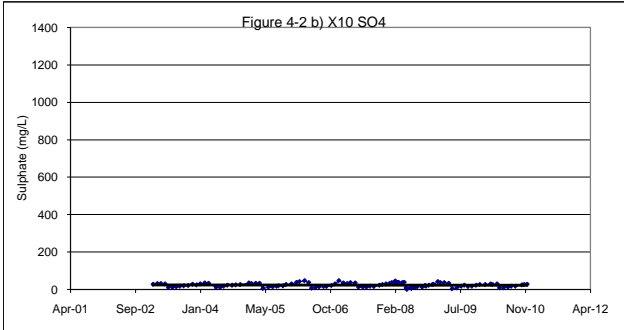
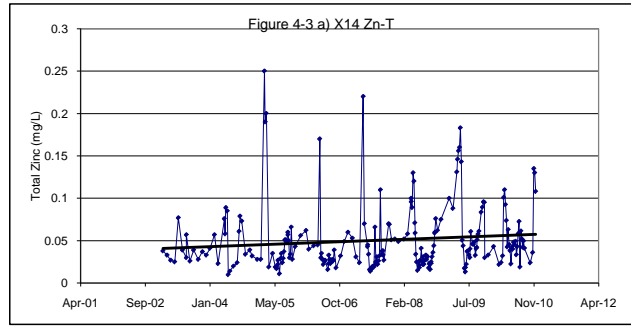
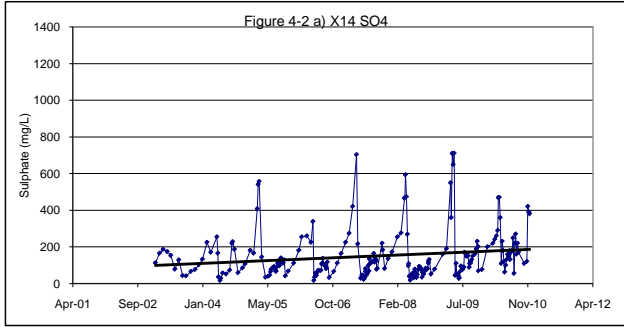


Figure 4-4: Water Quality in Rose Creek Downstream of FMC Activities at Station X14 - Winter (2003 to 2010)

