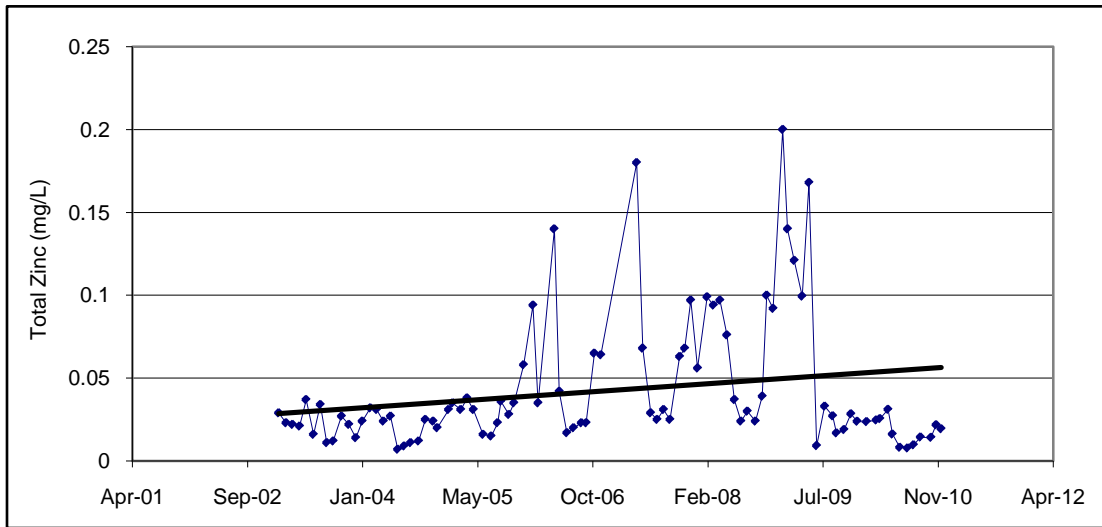
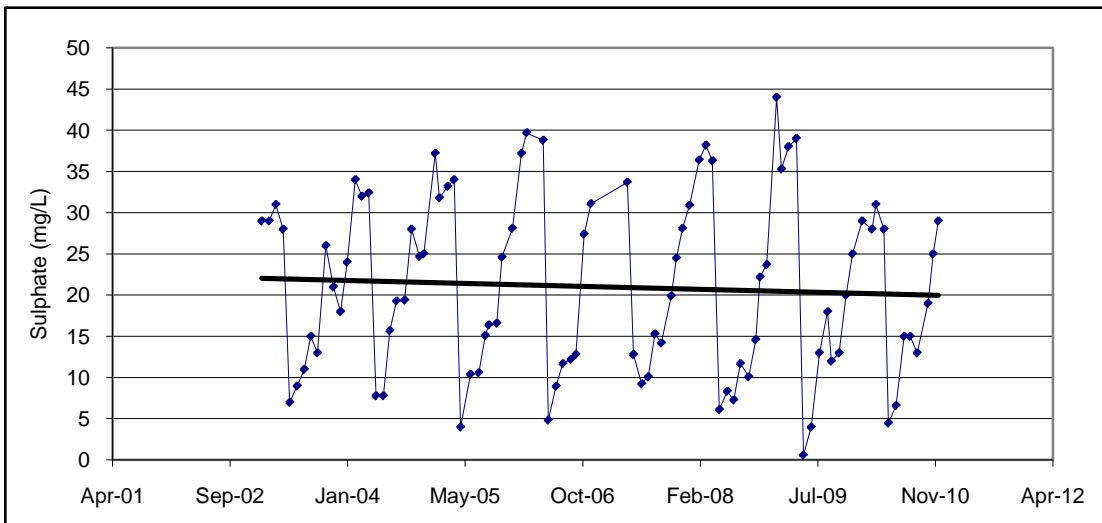


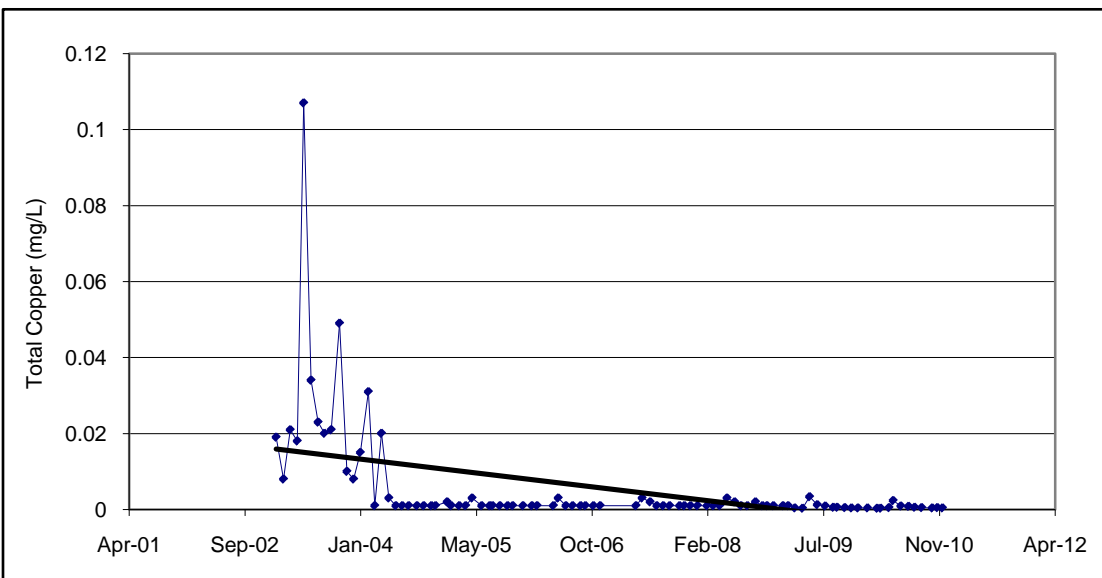
a)



b)



c)



IP Analysis - to Dec 2010

X2, N Fork of Rose Creek u/s of mine access road

DATE	Sulphate mg/L	Zinc (Total) mg/L	Copper mg/L
14-Jan-03	29	0.029	0.019
15-Feb-03	29	0.023	0.008
15-Mar-03	31	0.022	0.021
15-Apr-03	28	0.021	0.018
13-May-03	7	0.037	0.107
14-Jun-03	9	0.016	0.034
14-Jul-03	11	0.034	0.023
11-Aug-03	15	0.011	0.02
8-Sep-03	13	0.012	0.021
14-Oct-03	26	0.027	0.049
15-Nov-03	21	0.022	0.01
15-Dec-03	18	0.014	0.008
12-Jan-04	24	0.024	0.015
16-Feb-04	34	0.032	0.031
15-Mar-04	32	0.031	0.001
13-Apr-04	32.4	0.024	0.02
14-May-04	7.8	0.027	0.003
14-Jun-04	7.8	0.007	0.001
12-Jul-04	15.7	0.009	0.001
9-Aug-04	19.3	0.011	0.001
13-Sep-04	19.4	0.012	0.001
12-Oct-04	28	0.025	0.001
15-Nov-04	24.7	0.024	0.001
3-Dec-04	25	0.02	0.001
21-Jan-05	37.2	0.031	0.002
8-Feb-05	31.8	0.035	0.001
15-Mar-05	33.2	0.031	0.001
11-Apr-05	34	0.038	0.001
9-May-05	4	0.031	0.003
20-Jun-05	10.4	0.016	0.001
25-Jul-05	10.6	0.015	0.001
22-Aug-05	15.1	0.023	0.001
6-Sep-05	16.4	0.036	0.001
10-Oct-05	16.6	0.028	0.001
1-Nov-05	24.6	0.035	0.001
13-Dec-05	28.1	0.058	0.001
23-Jan-06	37.2	0.094	0.001
14-Feb-06	39.7	0.035	0.001
25-Apr-06	38.8	0.14	0.001
17-May-06	4.85	0.042	0.003
19-Jun-06	8.95	0.017	0.001
18-Jul-06	11.7	0.02	0.001
21-Aug-06	12.2	0.023	0.0010
11-Sep-06	12.8	0.023	0.0010
16-Oct-06	27.4	0.065	0.0010
14-Nov-06	31.1	0.064	0.0010
Trigger	14.8^a/29.5^b	0.06	0.028

DATE	Sulphate mg/L	Zinc (Total) mg/L	Copper mg/L
18-Apr-07	33.7	0.18	0.0010
14-May-07	12.8	0.068	0.0030
18-Jun-07	9.25	0.029	0.0020
16-Jul-07	10.1	0.025	0.0010
13-Aug-07	15.3	0.031	0.0010
10-Sep-07	14.2	0.025	0.0010
22-Oct-07	19.9	0.063	0.0010
13-Nov-07	24.5	0.068	0.0010
9-Dec-07	28.1	0.097	0.0010
8-Jan-08	30.9	0.056	0.0010
18-Feb-08	36.4	0.099	0.0010
17-Mar-08	38.2	0.094	0.0010
14-Apr-08	36.3	0.097	0.0010
14-May-08	6.12	0.076	0.0030
16-Jun-08	8.35	0.037	0.0020
14-Jul-08	7.3	0.024	0.0010
11-Aug-08	11.7	0.03	0.0010
15-Sep-08	10.1	0.024	0.0020
15-Oct-08	14.6	0.039	0.0010
3-Nov-08	22.2	0.1	0.0010
1-Dec-08	23.7	0.092	0.0010
12-Jan-09	44	0.2	0.0010
2-Feb-09	35.3	0.14	0.0010
3-Mar-09	38	0.121	0.0004
6-Apr-09	39	0.0994	0.0003
6-May-09	0.6	0.168	0.0033
8-Jun-09	4	0.0092	0.0012
13-Jul-09	13	0.033	0.0009
17-Aug-09	18.0	0.0272	0.00059
2-Sep-09	12.0	0.0169	0.00060
5-Oct-09	13.0	0.0189	0.00050
4-Nov-09	20.0	0.0284	0.00040
1-Dec-09	25.0	0.0239	0.00040
11-Jan-10	29.0	0.0237	0.00040
22-Feb-10	28.0	0.0247	0.00030
10-Mar-10	31.0	0.0255	0.00030
14-Apr-10	28.0	0.0311	0.00050
3-May-10	4.5	0.0162	0.00230
4-Jun-10	6.6	0.0082	0.00090
8-Jul-10	15.0	0.0078	0.00080
3-Aug-10	15.0	0.0097	0.00060
2-Sep-10	13.0	0.0144	0.00050
18-Oct-10	19.0	0.0142	0.00040
9-Nov-10	25.0	0.0218	0.00050
1-Dec-10	29.0	0.0194	0.00040
Trigger	14.8^a/29.5^b	0.06	0.028

Note: Italic = Exceeds Trigger Value; a: Open Water Trigger Value; b: Winter Trigger Value
 Shaded numbers are "less than" the value indicated