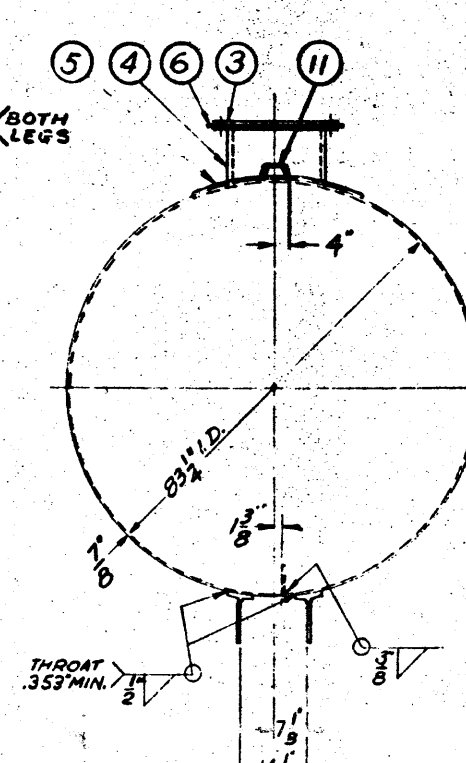
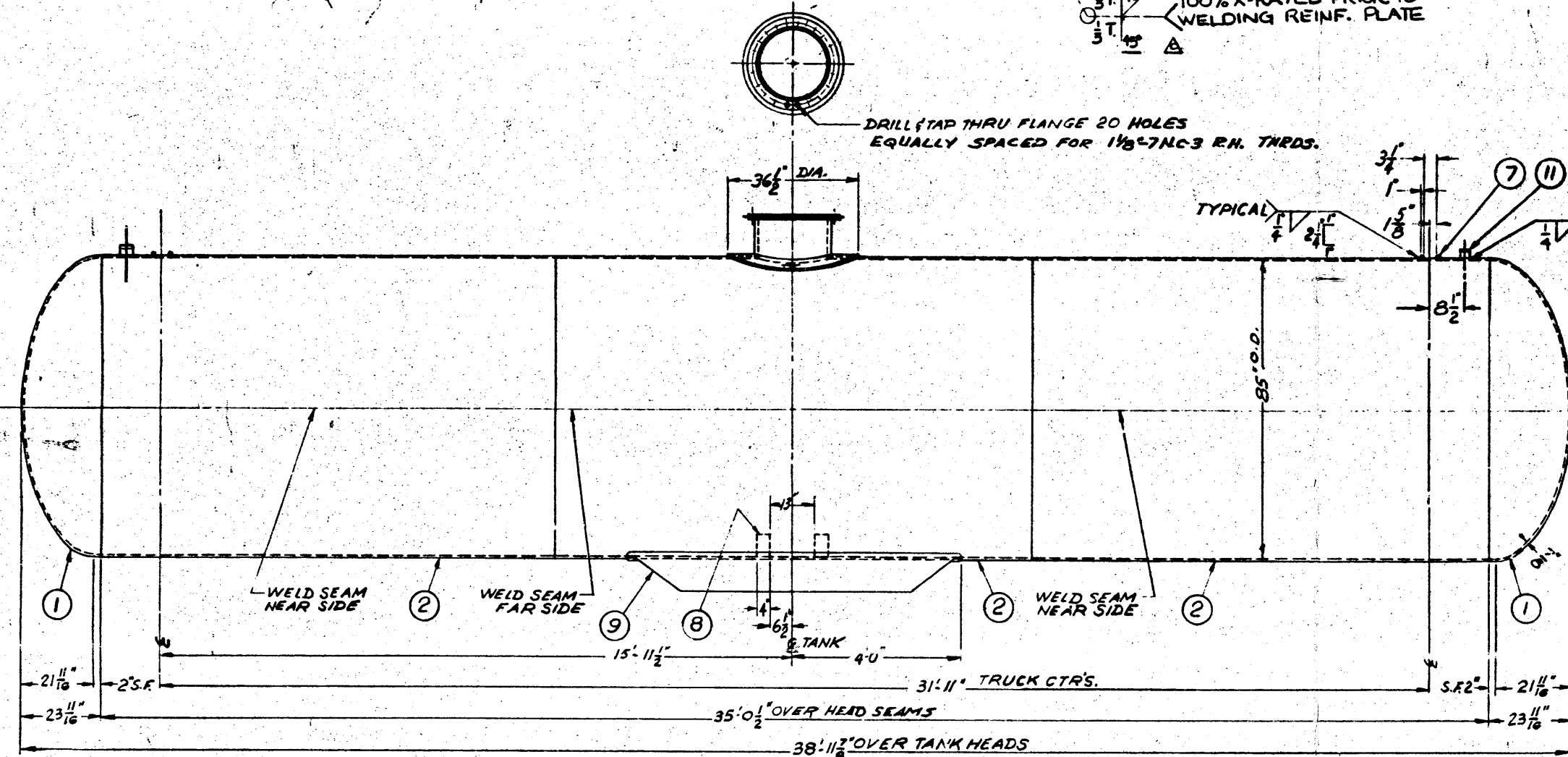


NO.	REV.	SYMBOL	DRG. NO.	DESCRIPTION	MATERIAL	F/M
2	1			ELLIPTICAL TANK HEAD (2 R1 R170) 3/8" THK	SEE NOTE #2	
	2			TANK SHELL PLATE 3/8" THICK	SEE NOTE #2	
1	3			NOZZLE FLANGE 2" THICK	SEE NOTE #4	
1	4			NOZZLE 1 1/4" THICK	SEE NOTE #2	
1	5			NOZZLE REINFORCING R. 3/8" THICK	SEE NOTE #2	
1	6			JACKET SUPPORT RING	STL.	
4	7			TANK BAND STOP	STL.	
2	8			REDUCTION PIPE ANCHOR BRACE CONN.	STL.	
2	9			APPL. & DETAIL OF TANK ANCHOR	STL.	
2	11			JACKET ALIGN. MENT BRACKET	STL.	



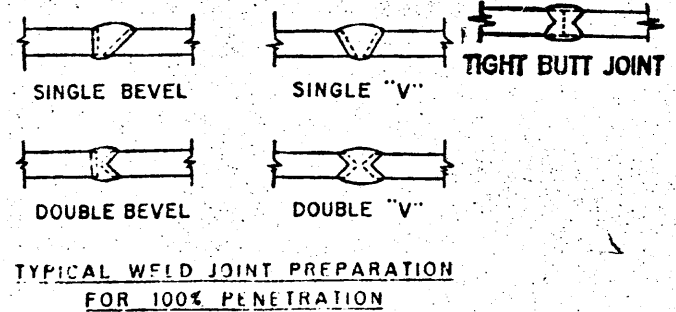
**GENERAL NOTES**

- MATERIAL SPEC.: ASTM A-285, GR. C, F. Q. S. LATEST REVISION.
- MAT'L SPEC. OPEN HEARTH BOILER PLATE STEEL FLANGE QUALITY, A. S. T. M. A-212, GR. B (FINE GRAIN PRACTICE) WITH CARBON CONTENT NOT TO EXCEED 0.31%.
- TANK TO BE BUILT IN ACCORDANCE WITH SPEC. I.C.C. 105-A 500W INCLUDING STRESS RELIEVING AS A UNIT, AFTER ALL ATTACHMENTS TO BE JOINED TO THE STRUCTURE BY WELDING, HAVE BEEN WELDED IN PLACE, AND X-RAYING EVERY PORTION OF ALL LONGITUDINAL AND CIRCUMFERENTIAL JOINTS OF TANK SHELL.
- ALL LONGITUDINAL AND CIRCUMFERENTIAL SEAMS & ANCHORS TO BE WELDED BY THE "UNION MELT" PROCESS. ALL BUTT SEAMS ARE TO BE DOUBLE BUTT WELD. ALL OTHER WELDED JOINTS TO BE ELECTRIC ARC WELDED.
- I.C.C. 105-A 500-W TANK SHALL BE TESTED AT 500# HYDROSTATIC PRESSURE, AND HELD AT THIS PRESCRIBED PRESSURE FOR AT LEAST 30 MINUTES WITHOUT LEAKAGE OR DISTRESS.
- FOR NOZZLE REINFORCEMENT CALCULATIONS SEE SK-4298.
- TANK TOLERANCES ARE GIVEN ON DRG. 8-7852.
- INTERIOR OF TANK TO BE THOROUGHLY WIRE BRUSHED AND CLEANED OF ALL WELD SPATTER, SCALE & ANNEALING RESIDUE.
- STAMP CLEARLY AND PERMANENTLY IN CENTER OF BOTH HEADS IN 3/8" HIGH (MIN.) FIGURES AND LETTERS.

ASTM A-212 GR. B F.Q.S.  
ICC-105A 500W  
TANK MFG. NAME & NO. TEST DATE  
SERIAL NO. (APPRO. NO. (TANK NO.))  
WATER CAPACITY  
00000 POUNDS

**NOTES CONT.**

- HOLE TO BE FILLED WITH TEXACO PLASTIC MATERIAL "H" AFTER TEST.



STANDARD TOLERANCES:  
FRACTIONAL DIMENSIONS ± .005"  
DECIMAL DIMENSIONS ± .005"  
UNLESS OTHERWISE NOTED.

**UNION TANK CAR CO.**  
228 N. LA SALLE ST., CHICAGO, ILL.  
**10600 GAL. TANK**  
**CLASS I.C.C.-105A 500W**  
(STEEL)  
DATE MAY 18, 1960

1508	1504	1451	PTL-94	1333	PTL-77	1240	APPRO:
DWG. No WAS	SVM #10 WAS	ADDED SVM #11	NOZZLE WELDS	UP-DATED	ADDED NOTE #10		
8-9380	NOZZLE WELDS	UP-DATED					
D/P 12-23-65	J. O. H. 8-20-63	LAL	E. F. 9-6-62	CWK	W.H. 6-18-61	CWK	

REPRO OF 8-8684

PROX 27739.