

388000

389000

NOTES:
 1. Units: Meters
 2. Projection: UTM Zone 8 NAD83
 3. Site features (e.g., roads, trails, streams, waterbodies, watercourses and infrastructure areas) digitized by ELR using 2008 Quickbird imagery and spatial data provided (courtesy of Yukon government).
 4. Groundwater Sampling Locations collected by Hemmera/ELR October, 2014.

Mount Nansen Site
October 2014 Groundwater Monitoring Program



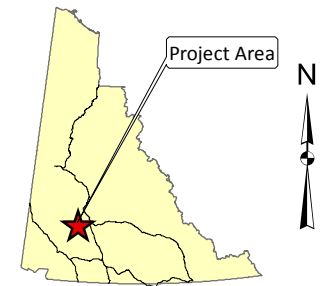
Client:



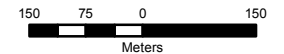
Legend

Groundwater Sampling Locations

- ◆ Drive Point
- ◆ Monitoring Well
- Watercourses



Scale: 1:10,000

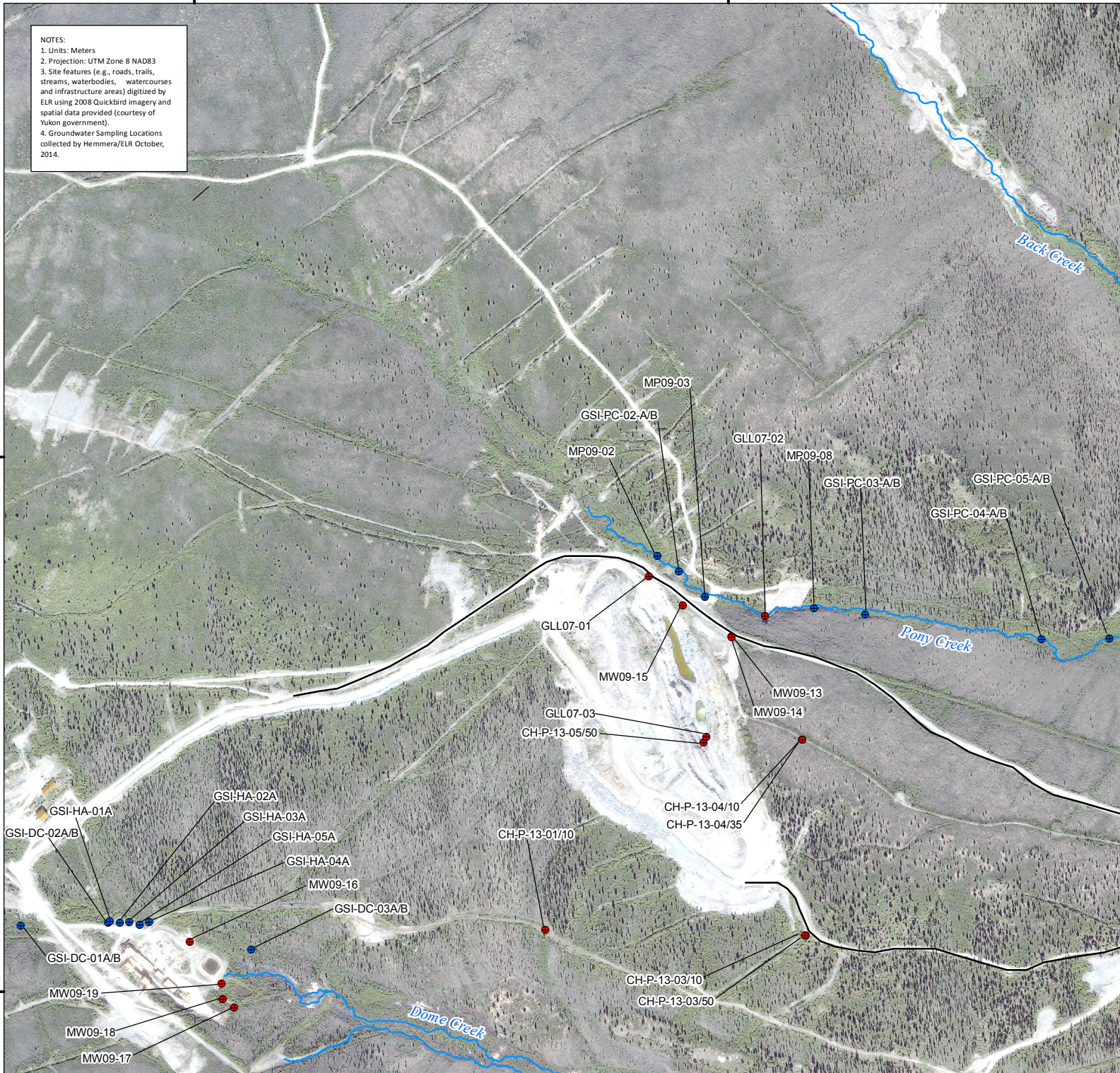


January, 2015

Hemmera Project: 1343-005.05

FIGURE 1-3

Groundwater Sampling Locations
Mill Complex and Brown McDade Pit



388000

389000

6882000

6881000