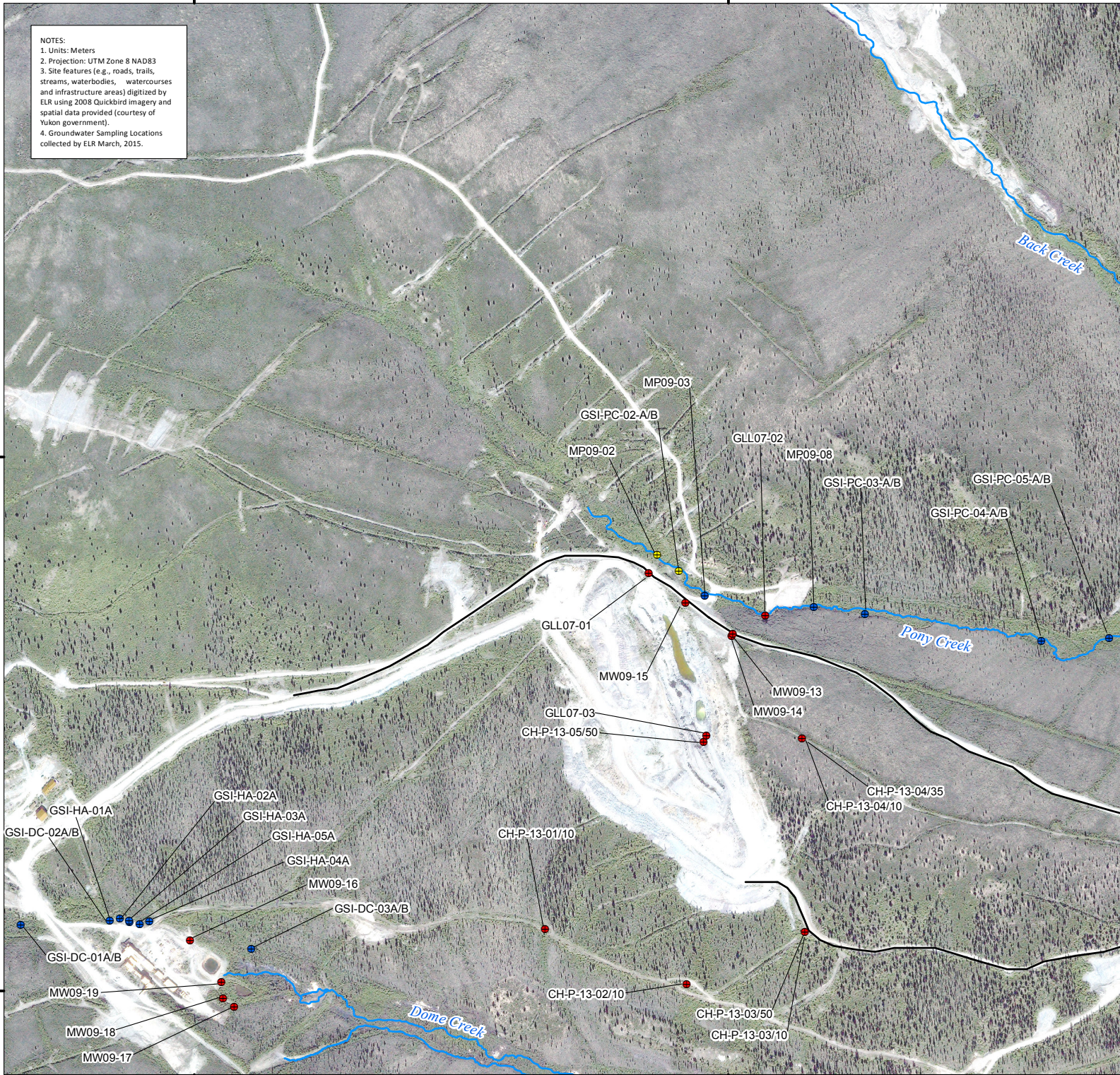


388000

389000

NOTES:  
 1. Units: Meters  
 2. Projection: UTM Zone 8 NAD83  
 3. Site features (e.g., roads, trails, streams, waterbodies, watercourses and infrastructure areas) digitized by ELR using 2008 Quickbird imagery and spatial data provided (courtesy of Yukon government).  
 4. Groundwater Sampling Locations collected by ELR March, 2015.



6882000

6881000

388000

389000

Mount Nansen Site - September 2015  
 Groundwater Monitoring Program

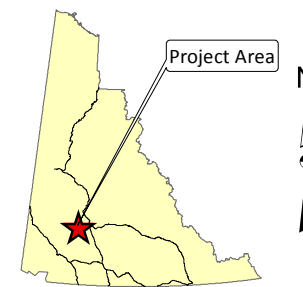


Client:

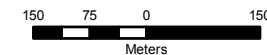


Legend

- Drive Point
- Monitoring Well
- Destroyed
- Watercourses



Scale: 1:10,000



January 25, 2016

Hemmera Project: 1343-005.11  
 ELR Project: 15-200.2

FIGURE 1-3

Groundwater Sampling Locations  
 Mill Complex and Brown McDade Pit