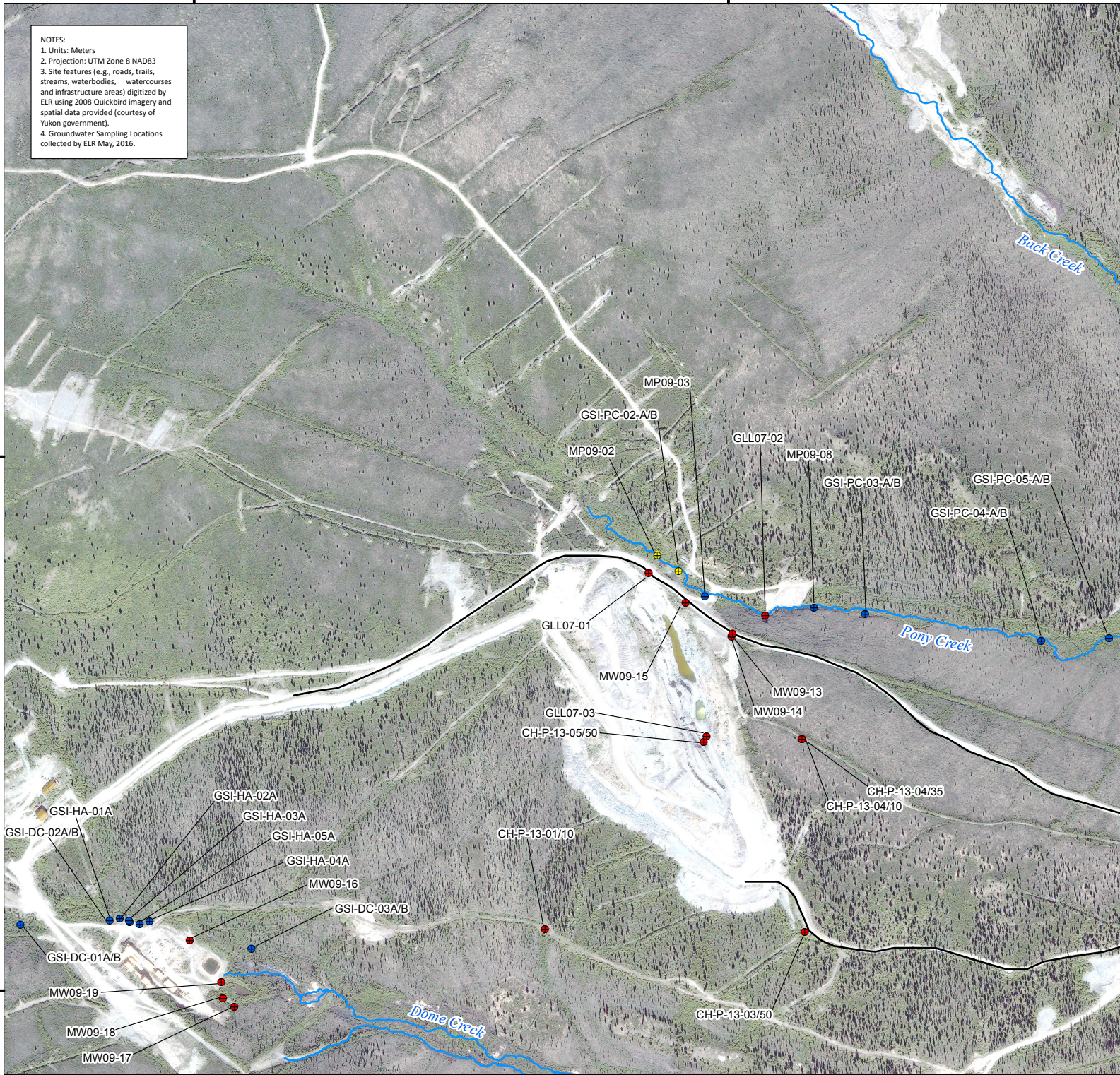


388000

389000

NOTES:
 1. Units: Meters
 2. Projection: UTM Zone 8 NAD83
 3. Site features (e.g., roads, trails, streams, waterbodies, watercourses and infrastructure areas) digitized by ELR using 2008 Quickbird Imagery and spatial data provided (courtesy of Yukon government).
 4. Groundwater Sampling Locations collected by ELR May, 2016.



6882000

6881000

388000

389000

**Mount Nansen Site - May 2016
 Groundwater Monitoring Program**

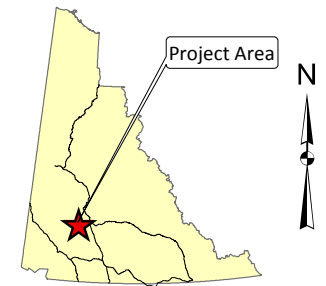


Client:

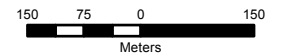


Legend

- Destroyed
- Drive Point
- Monitoring Well
- Watercourses



Scale: 1:10,000



June 15, 2016

Hemmera Project: 1343-005.27
 ELR Project: 16-239.1

FIGURE 1-3

Groundwater Sampling Locations
 Mill Complex and Brown McDade Pit