 Boundary Line of model domain and sub-domain.

VIN Model Code of sub-domain.



1000m

 **ROBERTSON GEOCONSULTANTS INC.**
Consulting Geotechnical and Environmental Engineers

FARO MINE SITE

Model Domain and Model Reaches

PROJECT NO. 118003/1	DATE May, 2005	APPROVED	FIGURE 3.1
-------------------------	-------------------	----------	---------------

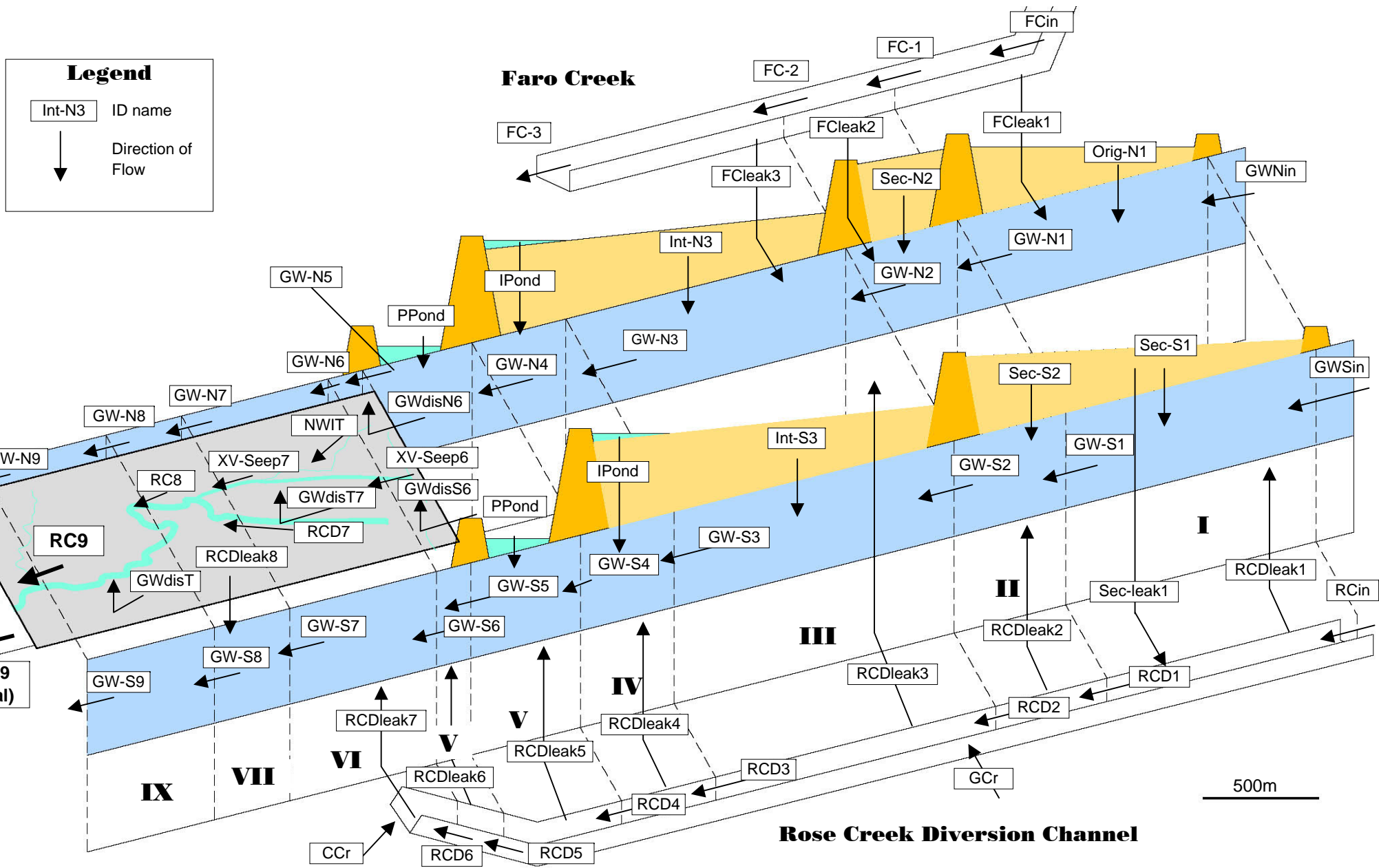
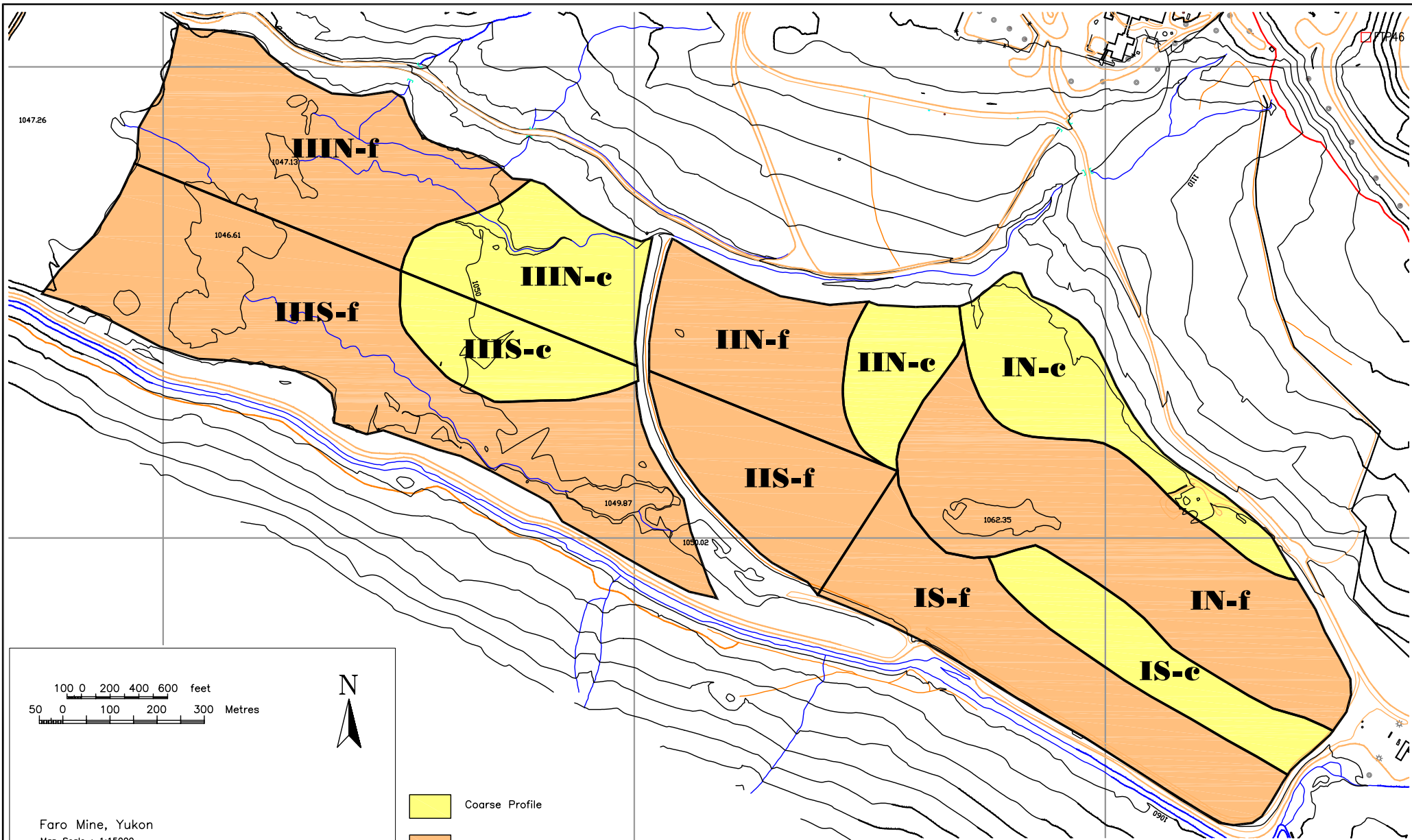


Figure 3.2 Water Balance for Rose Creek Valley - Scenario F1.



1047.26

IIN-f

1046.61

IIS-f

IIN-c

IIS-c

IIN-f

IIN-c

IN-c

IIS-f

1049.87

1050.02

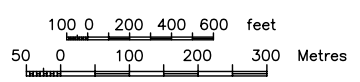
1062.35

IS-f

IN-f

IS-c

7746

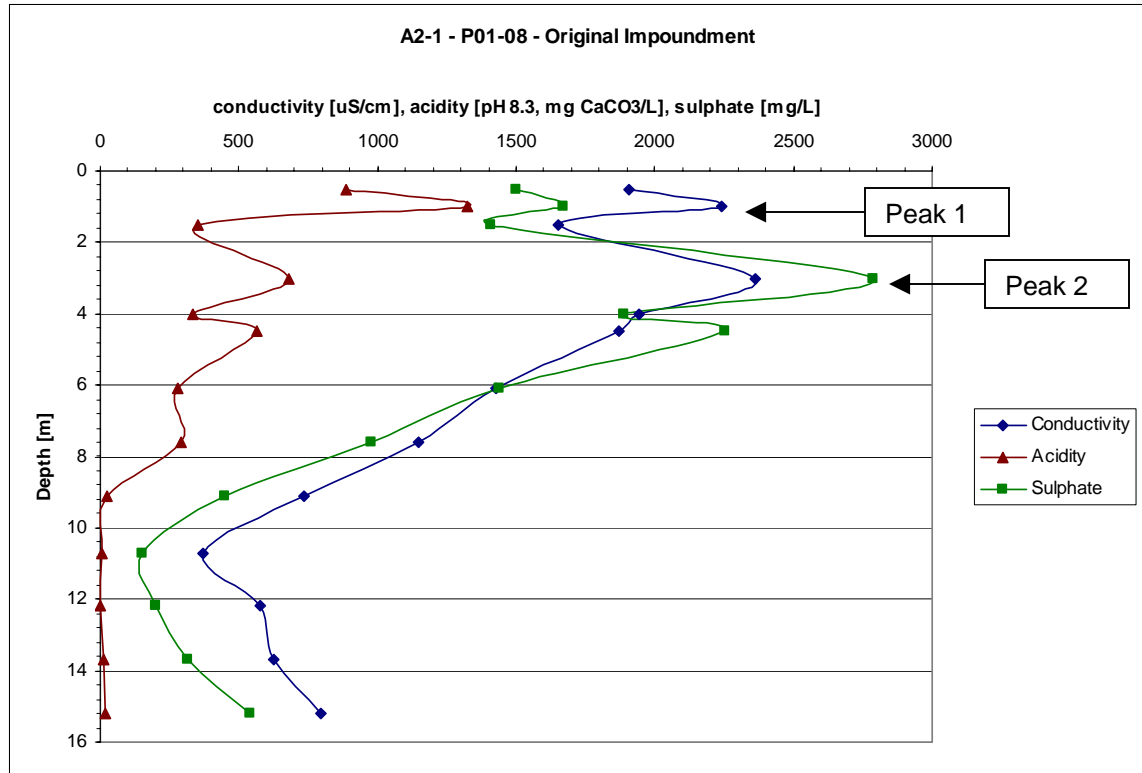


- Coarse Profile
- Mixed or Fine Profile

Faro Mine, Yukon
 Map Scale : 1:15000
 Contour interval: 10m
 Date of Photography: 03/07/25
 Scale of Photography: 1:20000
 Survey control derived from existing 1:20000 photography
 Survey control based on: UTM Projection, NAD27
 Compiled by The ORTHOSHOP, Calgary, September 2003
 wo 8856

R ROBERTSON GEOCONSULTANTS INC.
 Consulting Geotechnical and Environmental Engineers

FARO MINE SITE			
Spatial Classification of the Tailings Impoundments			
PROJECT NO.	DATE	APPROVED	FIGURE
118001/1	May, 2005		3.3



Example Calculations for P01-08 (fine tailings in Original Impoundment):

a) Determine propagation rate using EC profile:

Depth of PEAK 1 = 1.2 m;

Time tailings surface established = 1982;

time of measurement = 2001;

RATE = $1.2 \text{ m} / (2001 - 1982) = 0.063 \text{ m per year}$.

b) Determine rate of net infiltration:

Net Infiltration = $\text{Rate}(P1) * \text{Saturation} * \text{Porosity}$

Net Infiltration = $0.06 * 0.76 * 0.48 = 0.02 \text{ m/year} = 20 \text{ mm/year}$.

Figure 3.4. Estimation of rates of front propagation and net infiltration.

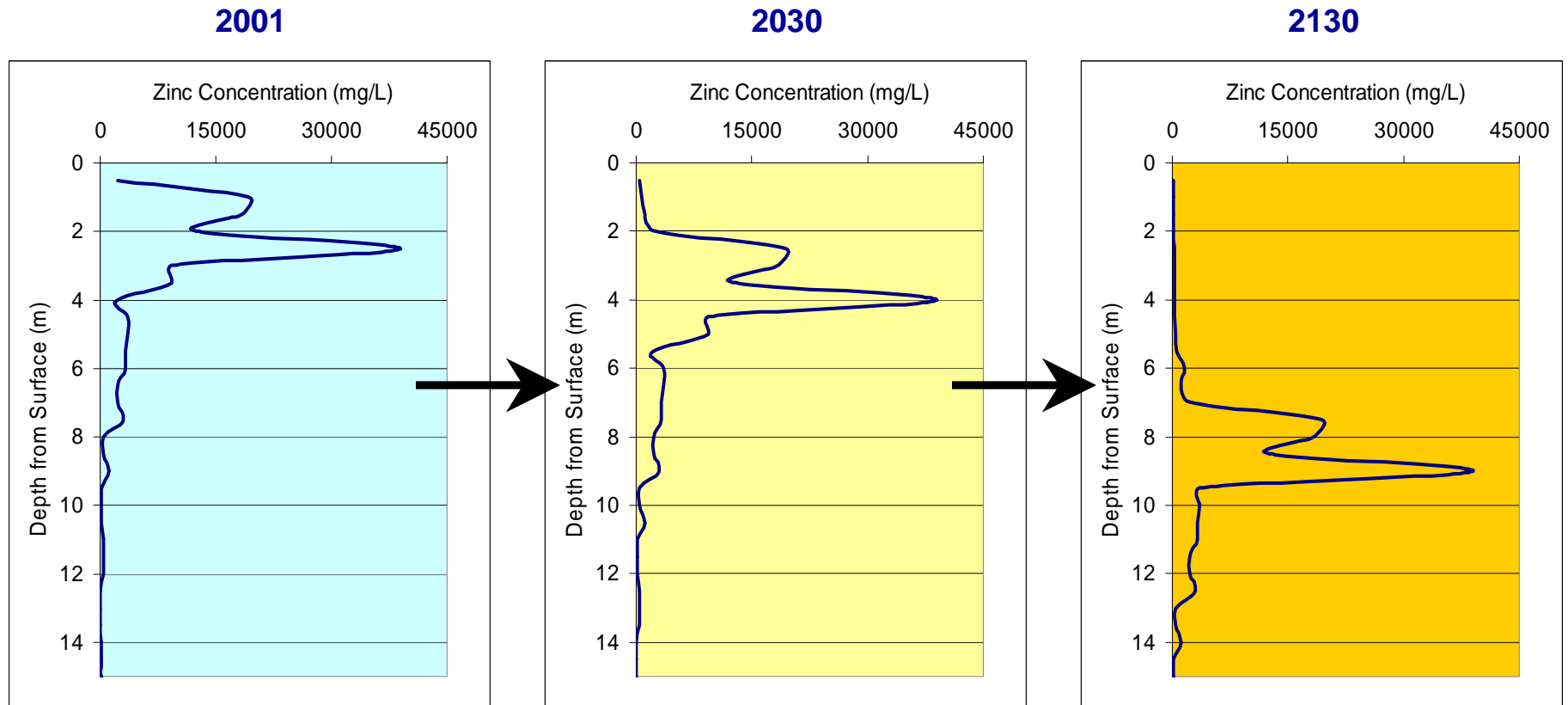


Figure 3.5 Schematic illustration of propagation of solute front in tailings profile.