

Figure 5.1 Predicted breakthrough of sulphate and zinc loads at base of tailings for average propagation rates.

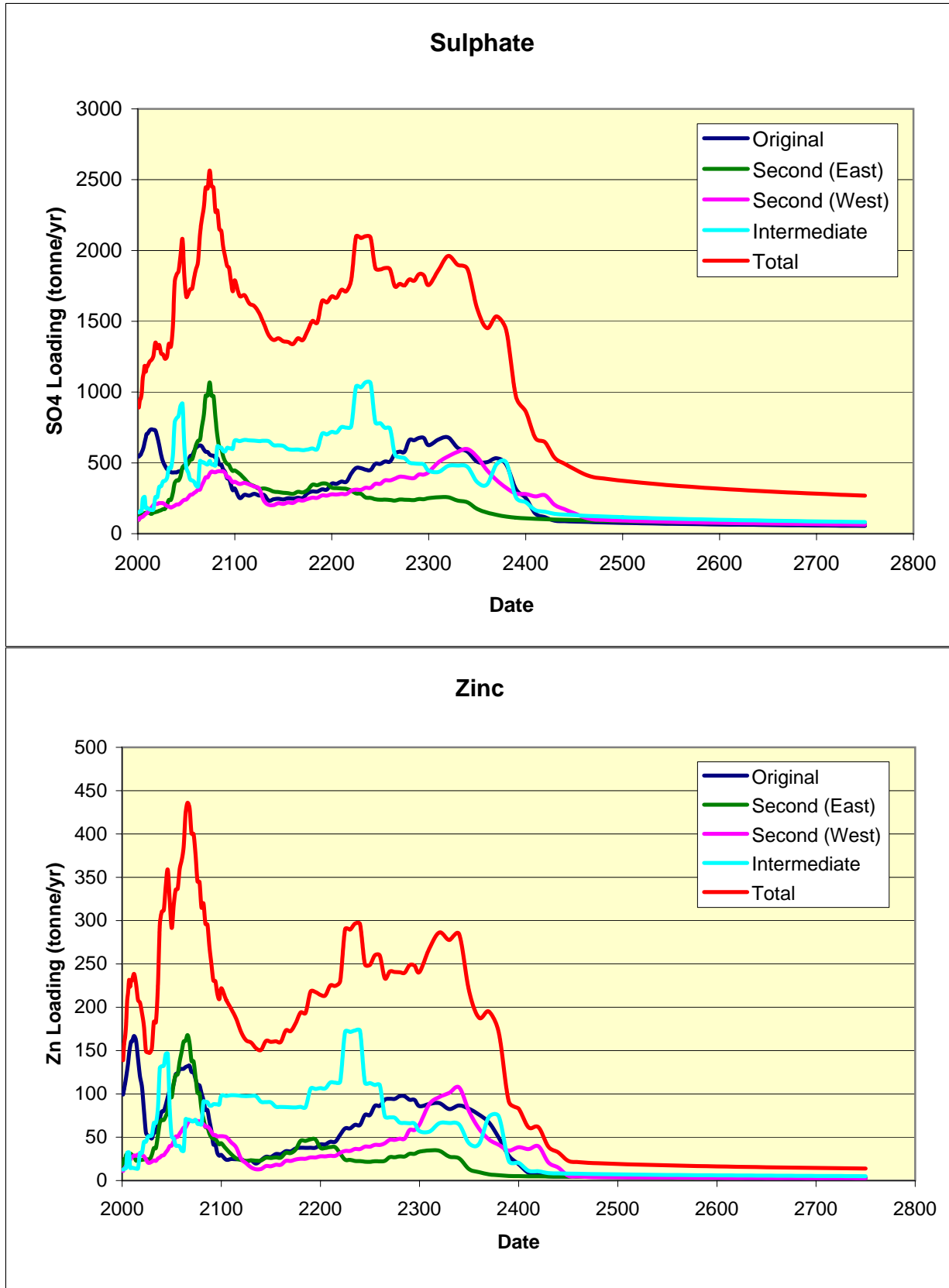


Figure 5.2 Predicted breakthrough of sulphate and zinc loads at base of tailings for maximum propagation rates.

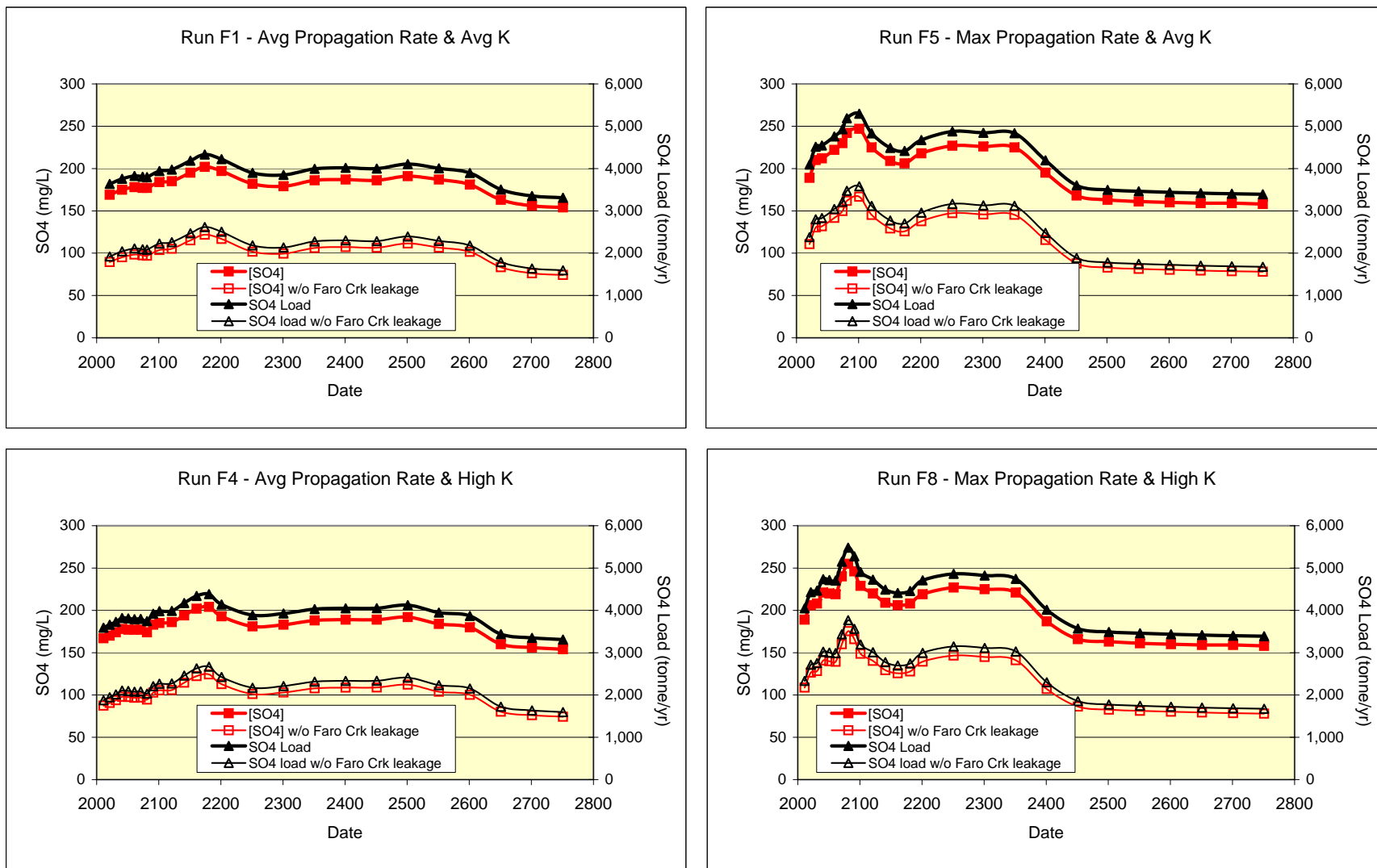


Figure 5.3 Predicted sulphate load in Rose Creek (RC9) assuming no remediation.

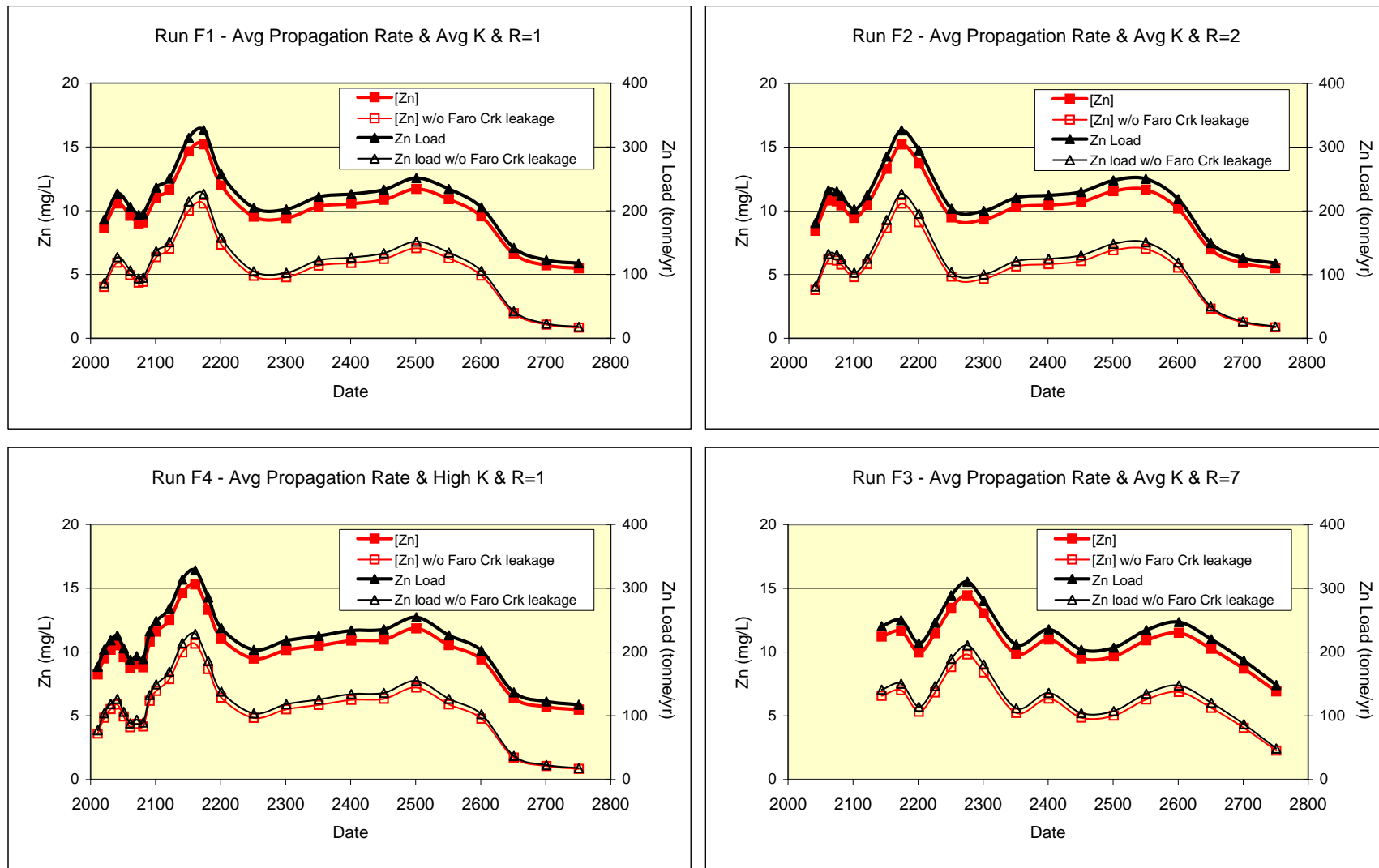


Figure 5.4 Predicted zinc load in Rose Creek (RC9) assuming average propagation rates and no remediation.

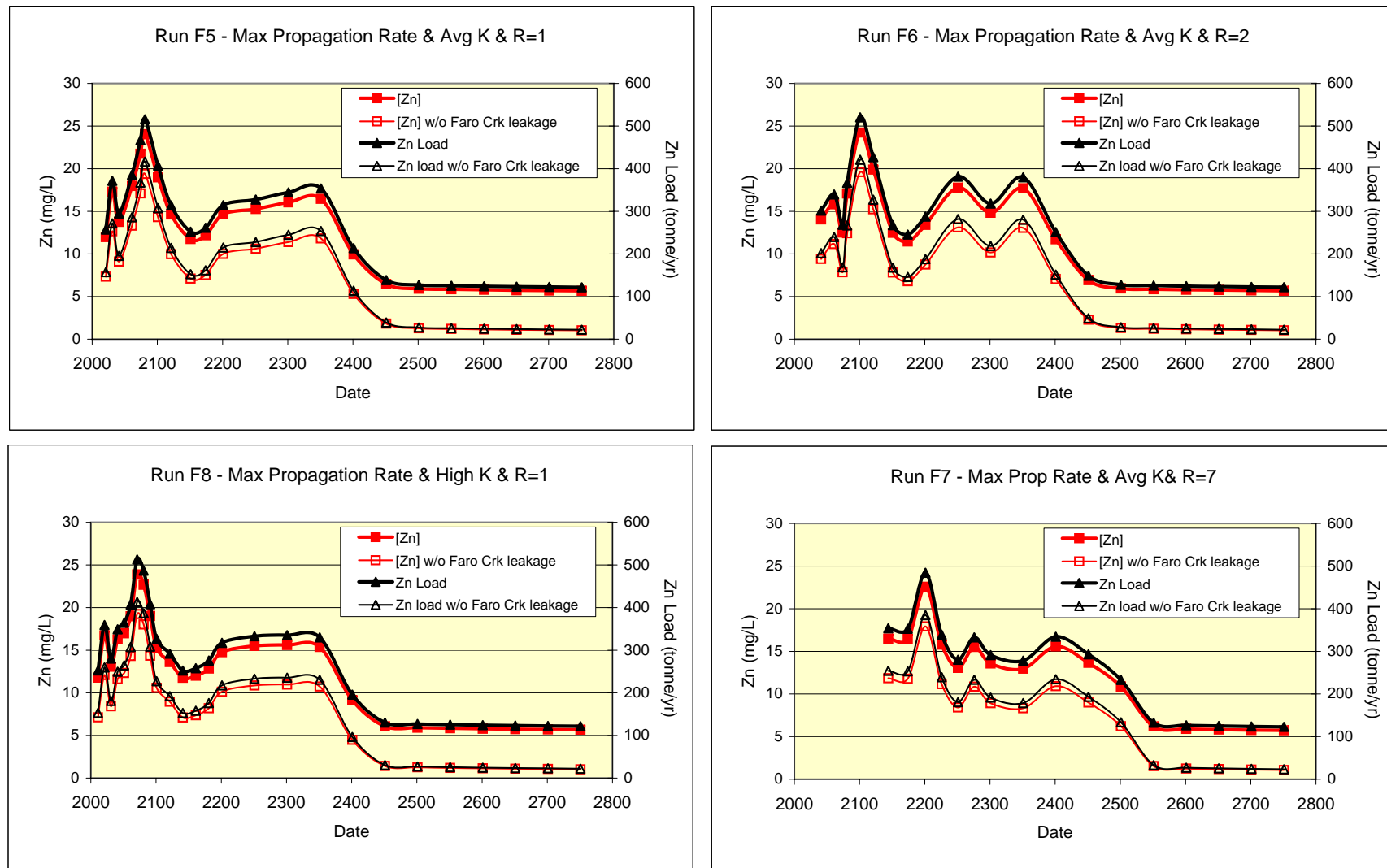


Figure 5.5 Predicted zinc load in Rose Creek (RC9) assuming maximum propagation rates and no remediation.