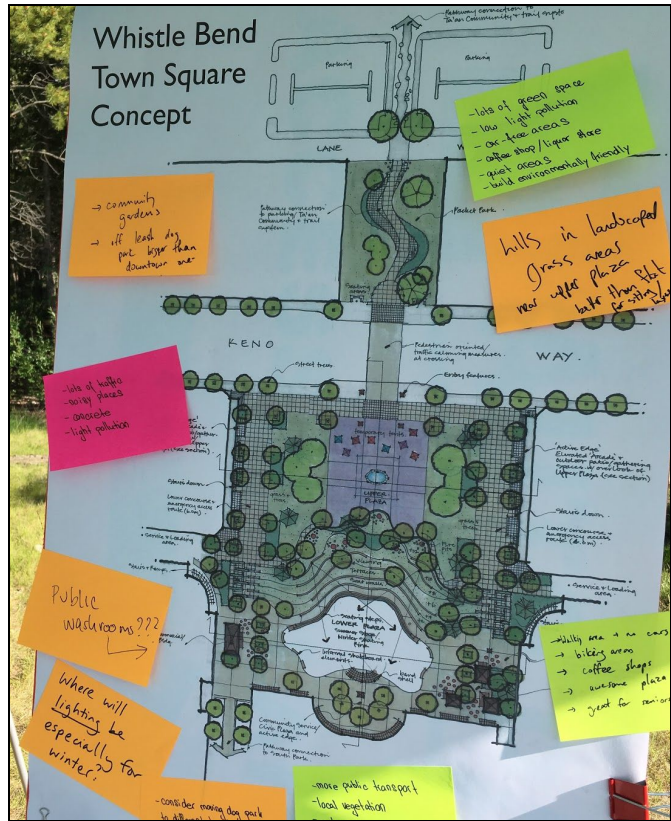


Whistle Bend Future Planning



Summary of Engagement Process

John Glynn-Morris
Public Engagement Specialist
Member, (co)space, NorthLight Innovation



Table of Contents

Background	2
Project focus	2
Engagement as part of good planning	3
Summary report	3
Engagement Process	3
Phase 1: Laying the Foundation	4
Purpose:	4
Format and date:	4
Participants:	4
Outcomes:	5
Phase 2: Our Path Forward	5
Purpose:	5
Format, date, and participants:	5
Government workshop and Community Cafe outcomes:	7
TKC Council Whistle Bend C-9B citizen workshop outcomes	8
Phase 3: Tradeoffs and preferences	9
Purpose:	9
Format and date:	10
Participants:	10
Outcomes:	10
How input influenced the final draft concepts	11





Background

The City of Whitehorse started planning for the development of the Whistle Bend area in 2006. The City followed a strong public participation process with the Porter Creek Bench Charrette resulting in a concept plan adopted by Council to serve future planning.

In 2008, the City developed a master plan for the entire Whistle Bend neighbourhood, which laid out major infrastructure components and set densities and development patterns for the area. This was followed by design for phases 1 and 2. Neighbourhood design for phases 3-7 was undertaken in 2011 which resulted in lot-layout and infrastructure pre-design for phases 3-7. Since then, the City and Yukon government (YG) have re-evaluated some aspects of phasing and design and made further revisions.

In 2018, the City in partnership with YG and Ta'an Kwäch'än Council (TKC), and with support from WSP, conducted planning work for future Whistle Bend phases including a town square.¹

Project focus

How can we design a town square which balances public values, livability aspirations of functionality and inclusion, and reflects the uniqueness of Whistle Bend and Whitehorse?

Engagement as part of good planning

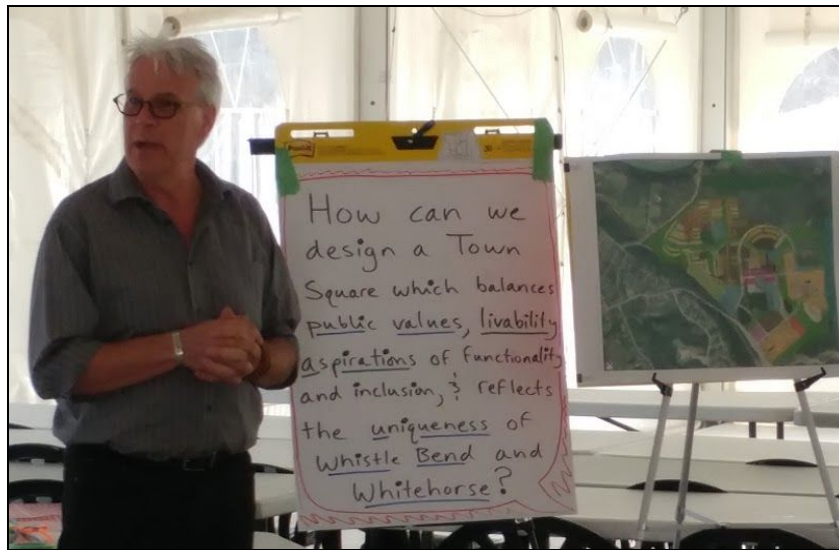
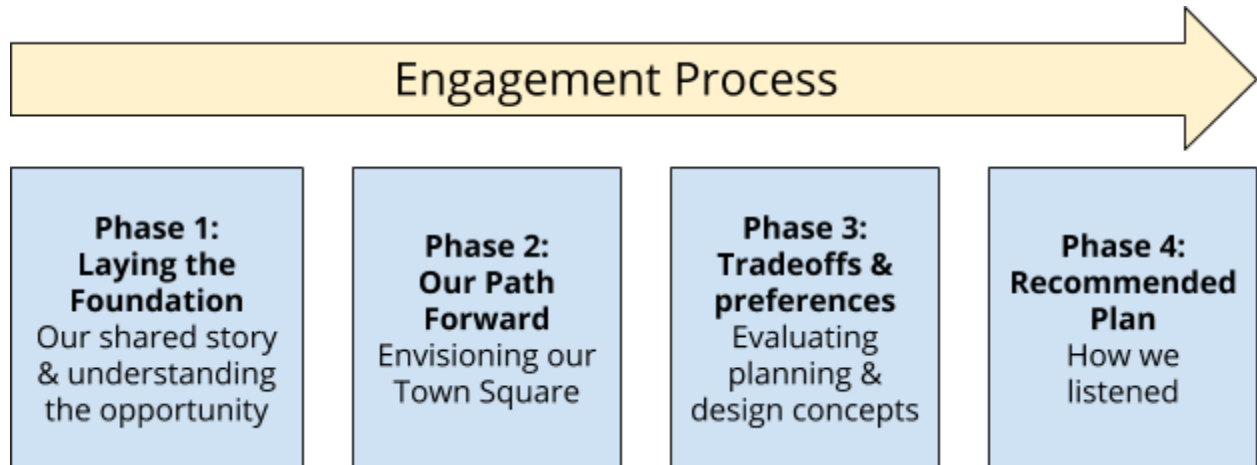
The planning team worked to ensure planning and design for the Whistle Bend future areas and the town square incorporated public values and government partner expertise.

Summary report

This report provides an overall summary of the engagement process based on generative and sequential objectives, highlighting the selected tools and techniques, and provides a summary of input gathered at each stage. More thorough engagement reports were created for each stage and are available on the City and TKC websites for reference. This report concludes with an overall explanation of how input influenced and is reflected in the final proposed plans and designs.

¹The planning team has kept Kwanlin Dun First Nation informed and will meet at their request.

Engagement Process



Introduction of 'Project Focus' statement.



Planning team members and citizens in a discussion at the May kick-off event.

Phase 1: Laying the Foundation

Purpose:

- Share global and local town square design elements
- Gather initial public input

Format and date:

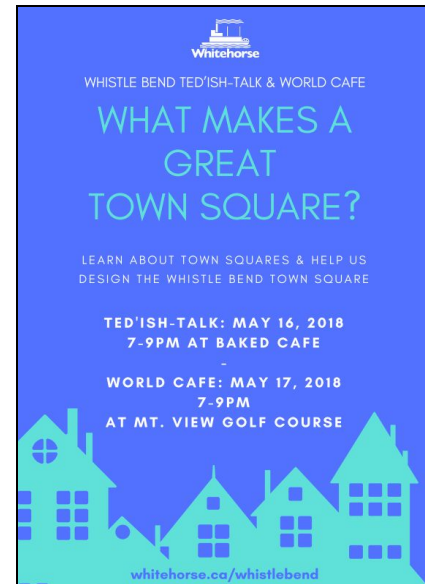
- TED(ish) Talk @ Baked Cafe
- May 16th, 2018

Participants:

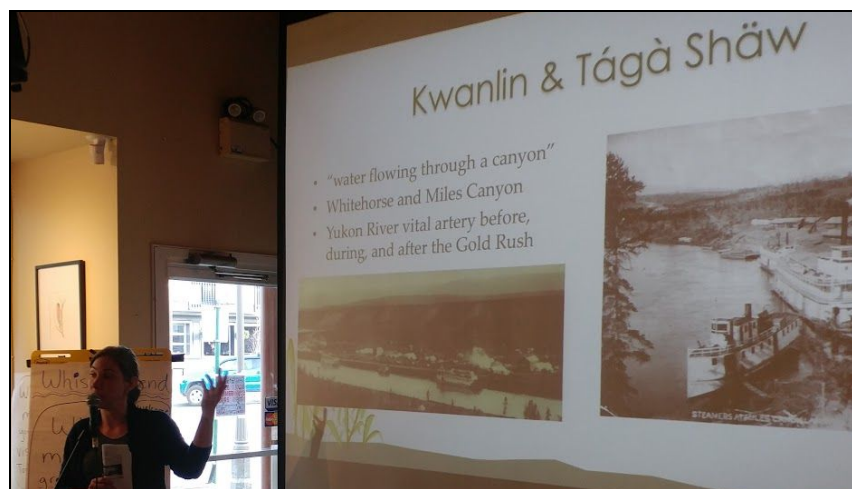
- All Whitehorse residents invited

Outcomes:

- Learning to support a meaningful process



Planning team member orienting citizens on town square location and size.



Planning team member explaining TKC cultural significance and history of the area.

Phase 2: Our Path Forward

Purpose:

- Planning & design considerations
- Vision elements

Format, date, and participants:

- Government partner workshop (City Public Safety Building, May 17th, 2018)
 - City Departments of Planning, Transit, and Parks
 - TKC Department of Lands, Resources, and Heritage
 - YG departments of Highways and Public Works, Economic Development, and Tourism and Culture



Planning team workshoping with government partners

- Community Cafe (Mountain View Golf Course, May 17th, 2018)
 - Public event targeting Whistle Bend residents



Working with Whistle Bend residents at Community Cafe workshop at Mountview Golf Course

- TKC Whistle Bend C-9B citizen workshop
 - Chief and Council, Administration, Da Daghay Development Corporation, and TKC citizens



Planning team discussing TKC Whistle Bend C-9B at TKC citizen workshop (June 11th, 2018)



TKC citizens and planning team sharing hopes and aspiration for C-9B (June 11th, 2018)

Government workshop and Community Cafe outcomes:

Below are the big themes the planning team heard in terms of the desired citizen experience, which influenced the design of the spatial and physical layout. There was a general alignment of themes identified at the Government Partner Workshop and Community Cafe.

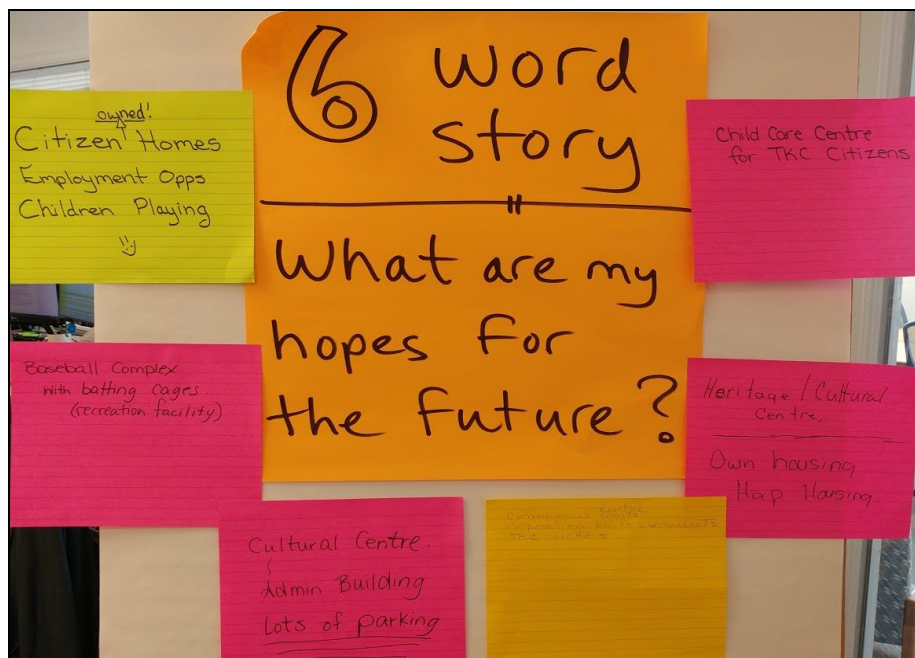
Main Themes
'Coffee!' > the importance of amenities that support relaxation and congregation.
'Commercial Retail Programming and Land Use' > the TS active edge should promote unique, local, homegrown/ mom and pop businesses.
'Connectivity' and 'Universally Accessible' > the TS needs to make direct connections to the surrounding multi-modal trail systems with all trails and public open space designed to accommodate wheelchairs, strollers, and pedestrians of all ages.
'Cultural, Art and Symbolism' > connections to the past people and Yukon First Nation peoples.
'Diversity of Experience' > residents are looking for a place that provides a mix of experiences.
'Flexible' and 'Multi-purpose' > a place that can be adapted to facilitate various events, festivals, and celebrations.
'Four Season Activities and Aesthetics' > a destination known for its four-season activities and its beautiful and inviting variety of spaces. A place to blow off steam and experience peace.
'Inspirational' > a reflection of the community's 'quality of life'.
'Multi/Inter-Generational' > '8 to 80' principal; a place for all ages and a place where the community can record its history, pay tribute to its people and celebrate its identity. A reflection of the community common interest.
'Safe' and 'Secure' > a place where everyone feels protected and free of fear and conflict, using <i>Crime Prevention Through Environmental Design</i> (CPTED) planning principles.
'Spirit and Sense of Community' and 'Sense of Belonging' > community-pride matters.
'Welcoming' and 'Inclusive' > space where everyone is and feels welcome.

TKC Council Whistle Bend C-9B citizen workshop outcomes

TKC citizens were invited jointly by the TKC government and the City of Whitehorse to learn about and inform the decision of future planning areas in Whistle Bend. The focus was on parcel C-9B, owned by TKC. The planning team wanted to ensure planning on adjacent areas aligned with the aspirations of TKC citizens. To that end, citizens were asked:

Q: What are citizen hopes for the future of C-9B in Whistle Bend?

Citizen-owned homes, employment opportunities, children playing
A baseball complex with batting cages (recreation facilities)
A cultural centre, administration building, and ample parking
A Childcare centre for TKC citizens
A Heritage and cultural centre, own housing, and <i>Housing Action Plan</i> ² housing
Commercial rental units that TKC development corporation builds and collects income



6-word stories created by TKC citizens.

² <http://www.housingactionplan.ca/>

Phase 3: Tradeoffs and preferences

Purpose:

- Evaluating planning & design concepts

Format and date:

- Pop-up events July 19th and 25th in Whistle Bend pond-parquette
- Online survey

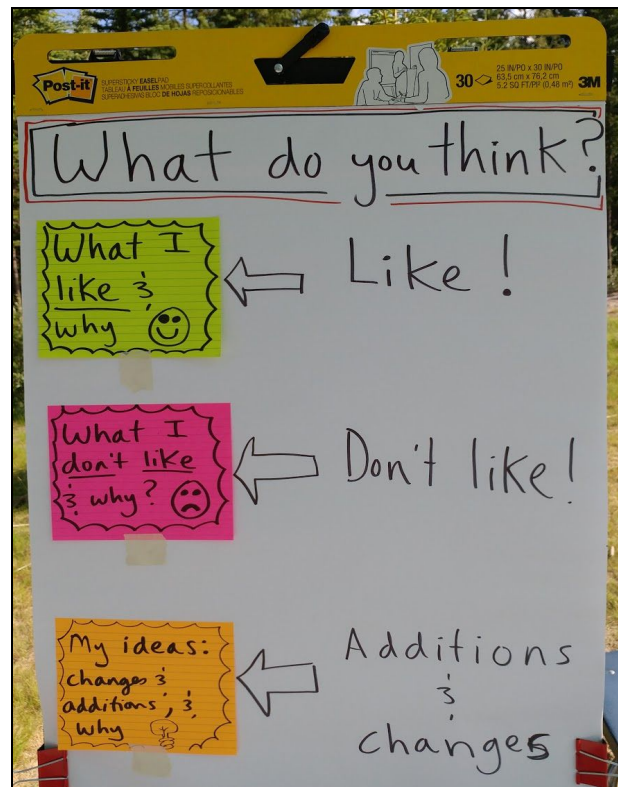
Participants:

- Local residents and the general public

Outcomes:

What residents liked and didn't like about the draft Town Square design; feedback was overwhelmingly positive, including:

- Multiple levels
- Multi-purpose design
- Greenery and greenspace
- Trees
- Paths
- Allows for different activities
- All-season use
- Commercial amenities and clusters
- Provides attractive social-gathering points
- Options for animation: festival, events, food, street vendors, and artists
- Overall flow
- Amphitheater and stage as a focal point
- Open space
- Ice skating rink
- Inclusivity and accessibility for various needs
- Market space
- Live entertainment
- Fire pits
- A mix of hard and soft scaping



Pop-up and survey questions.



Pond-parquette pop-up (July 2018)

Draft planning and design considerations identified by residents include:

- Community gardens
- Off-leash dog park
- Need to consider increased traffic
- Need to consider additional noise
- Too much concrete
- Need to balance possible light pollution with the need for winter lighting
- Need for public washrooms
- Build-in incentives to use public transportation
- Softscape with native vegetation
- Prioritize active transportation around the town square
- Need biking area
- Make sure there is 'social' commercial, such as a coffee shop
- Hill in landscape with grass area near upper plaza better than flat for sitting
- Maintain a balance of animated and quiet areas
- Make sure development and maintenance is environmentally friendly
- Space to warm-up in winter



Planning team explaining design concepts and understanding citizen reactions (July 19th, 2018).

How input influenced the final draft concepts

Town square

Public response to the draft town square concept at both pop-up events in Whistle Bend and the online survey was very positive. Following the engagement events, the planning team compiled and reviewed the comments received and incorporated the following elements into the town square design:

- Bike parking;
- Heat-tracing, irrigation, lighting, and tree grates; and
- Warming hut, public washroom, and fire pit integrated with the small commercial / retail building at the south-west corner of the town square.

Future Area A, B, & C

Little input was received regarding future Planning Areas A, B, and C. As a result, no changes were made to the draft plans following the community engagement events.