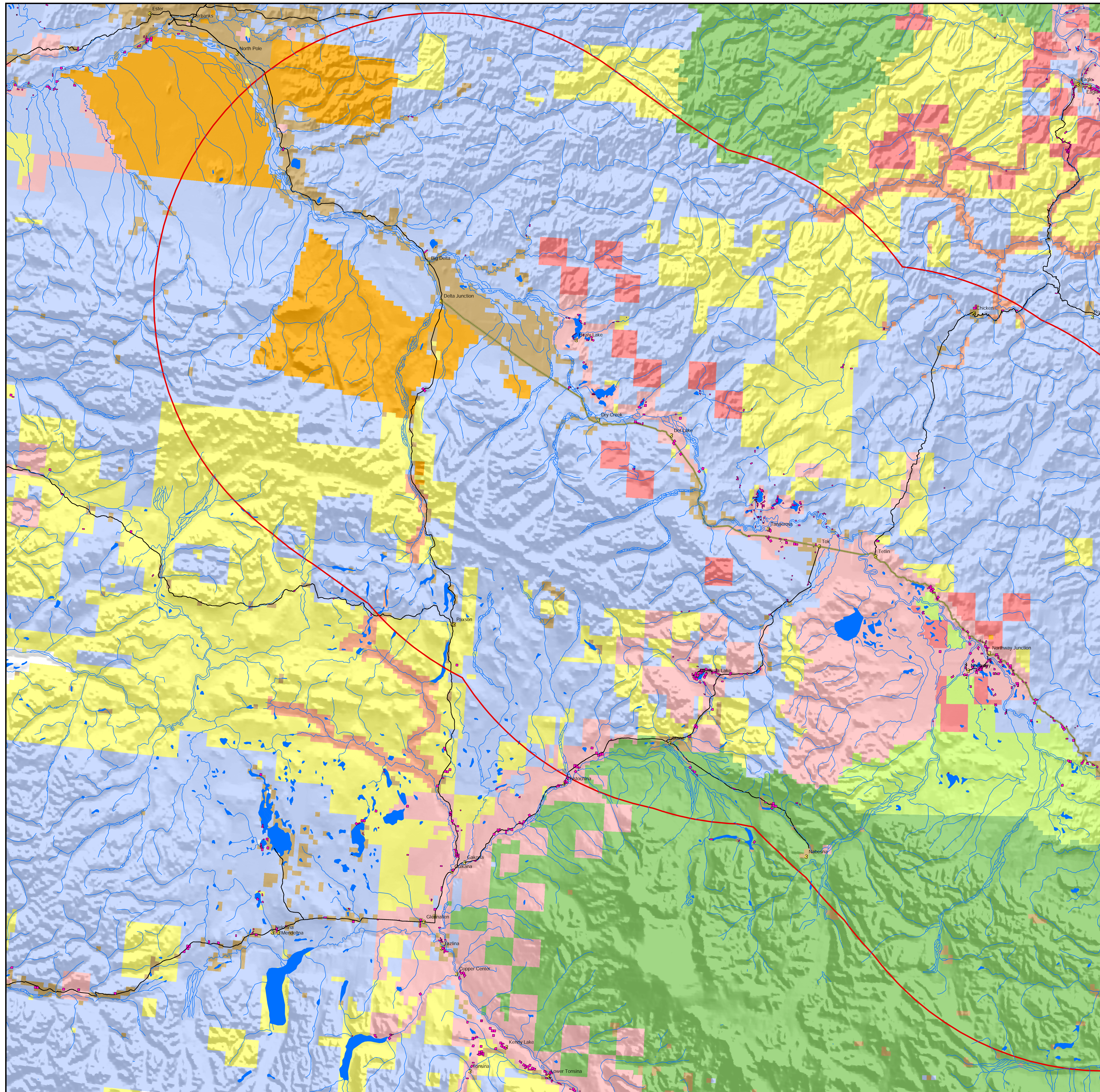


Land Status, Upper Tanana Region, Alaska



Legend

Native Allotments

ANCSA conveyed lands
 Village (12a)
 Regional Corp. (12c)
 Regional Corp (12c1)
 towns

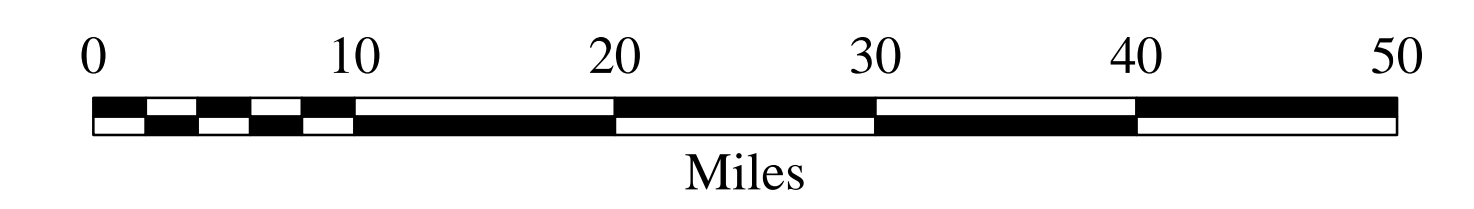
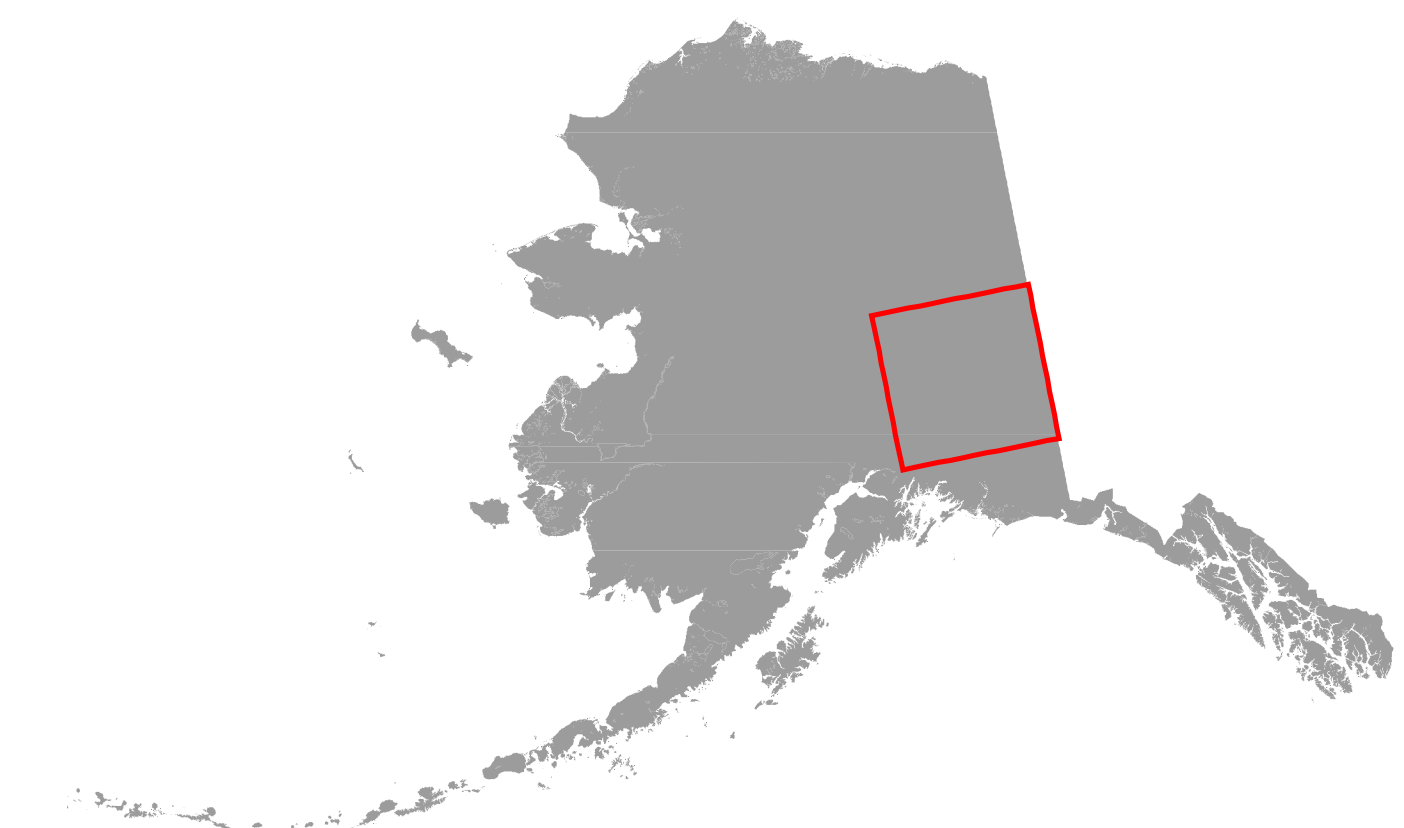
Generalized land status
 Park Service
 Tetlin Wildlife Refuge
 Wild and Scenic River
 BLM
 Military
 State of Alaska
 Private/Municipal

Alaska Highway

Alaska Highway 100km Buffer

Other highways

Location in Alaska



Native allotment data acquired from Bureau of Land Management

Conveyed ANCSA Corporation lands data acquired from Doyon, Ltd.

Generalized land status data acquired from State of Alaska Department of Natural Resources. "Generalized" means that land status is defined to the section level; it is not parcel-specific, and is to be used for general mapping purposes only.

Map prepared by W. Putman
 Tanana Chiefs Conference
 Fairbanks, AK
 May, 2005

