



**Faro Mine  
Remediation Project:  
Selection of a Closure Option**

*Michael Nahir, P.Eng.*

*Indian & Northern Affairs Canada*



**Co-authors:**

**Stephen Mead, Yukon Government**

**Daryl Hockley, SRK Consulting**

[info@faromine.ca](mailto:info@faromine.ca) | [www.faromine.ca](http://www.faromine.ca)

**Pelly Crossing:**  
867.537.3144

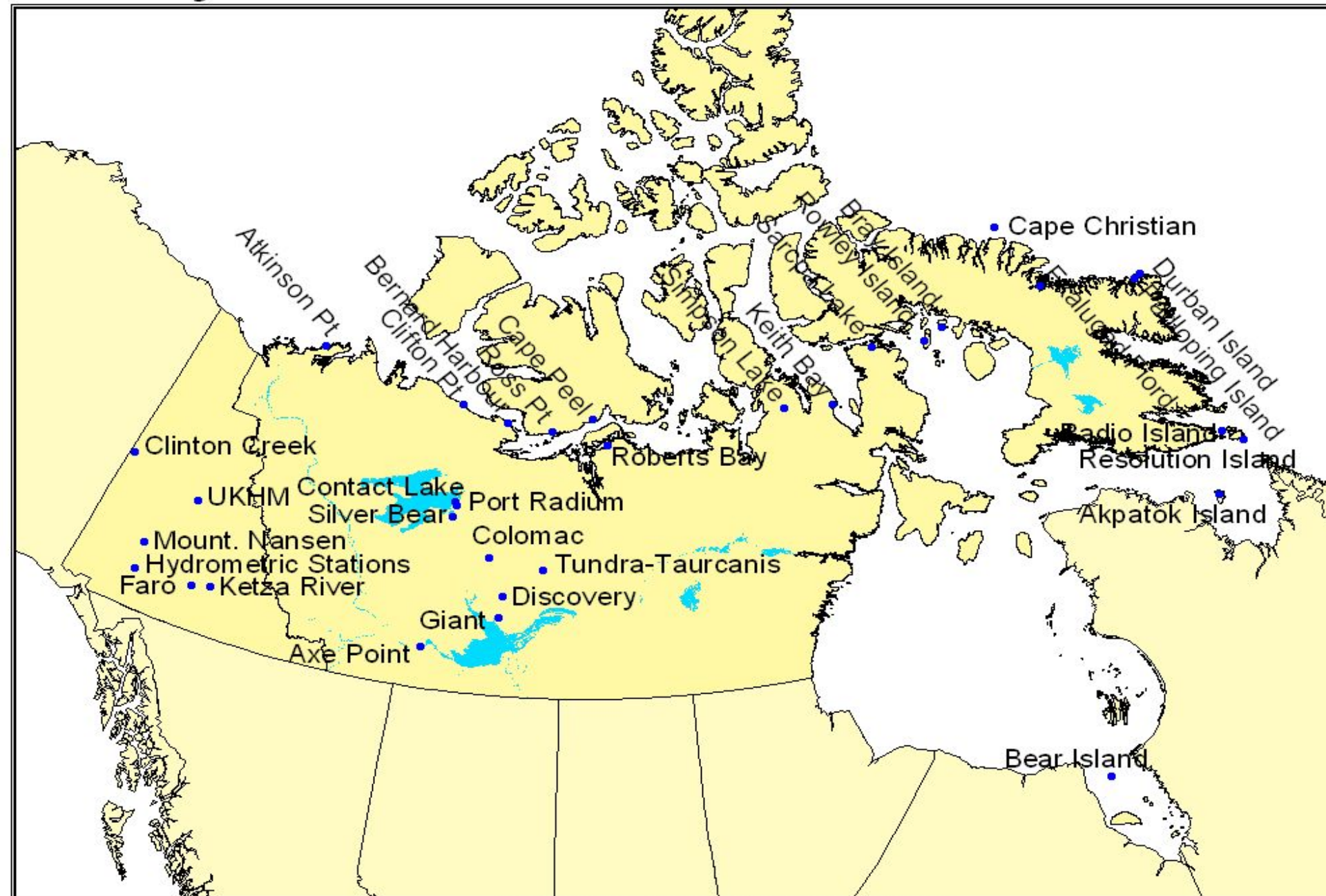
**Ross River:**  
867.969.2103

**Town of Faro:**  
867.994.2728

**Yukon**  
Government

**Canada**

# Priority Sites



# Current Liability Estimate

Liability: ~\$997 million

Potential liability: ~\$622 million



United Keno  
Hill Mine

Pelly Crossing:  
867.537.3144

Ross River:  
867.969.2103

Town of Faro:  
867.994.2728

**Yukon**  
Government

Canada

# Federal Funding (FCSAP)

Speech from the Throne in Fall 2002 announced the intention to accelerate the clean up of federal contaminated sites.

Budget in February 2003 announced \$175 million over two years.

A new investment of **\$3.5 billion** towards the clean up of federal contaminated sites was announced in the 2004 Speech from the Throne and reaffirmed in the 2004 Budget.

[info@faromine.ca](mailto:info@faromine.ca) | [www.faromine.ca](http://www.faromine.ca)

Pelly Crossing:  
867.537.3144

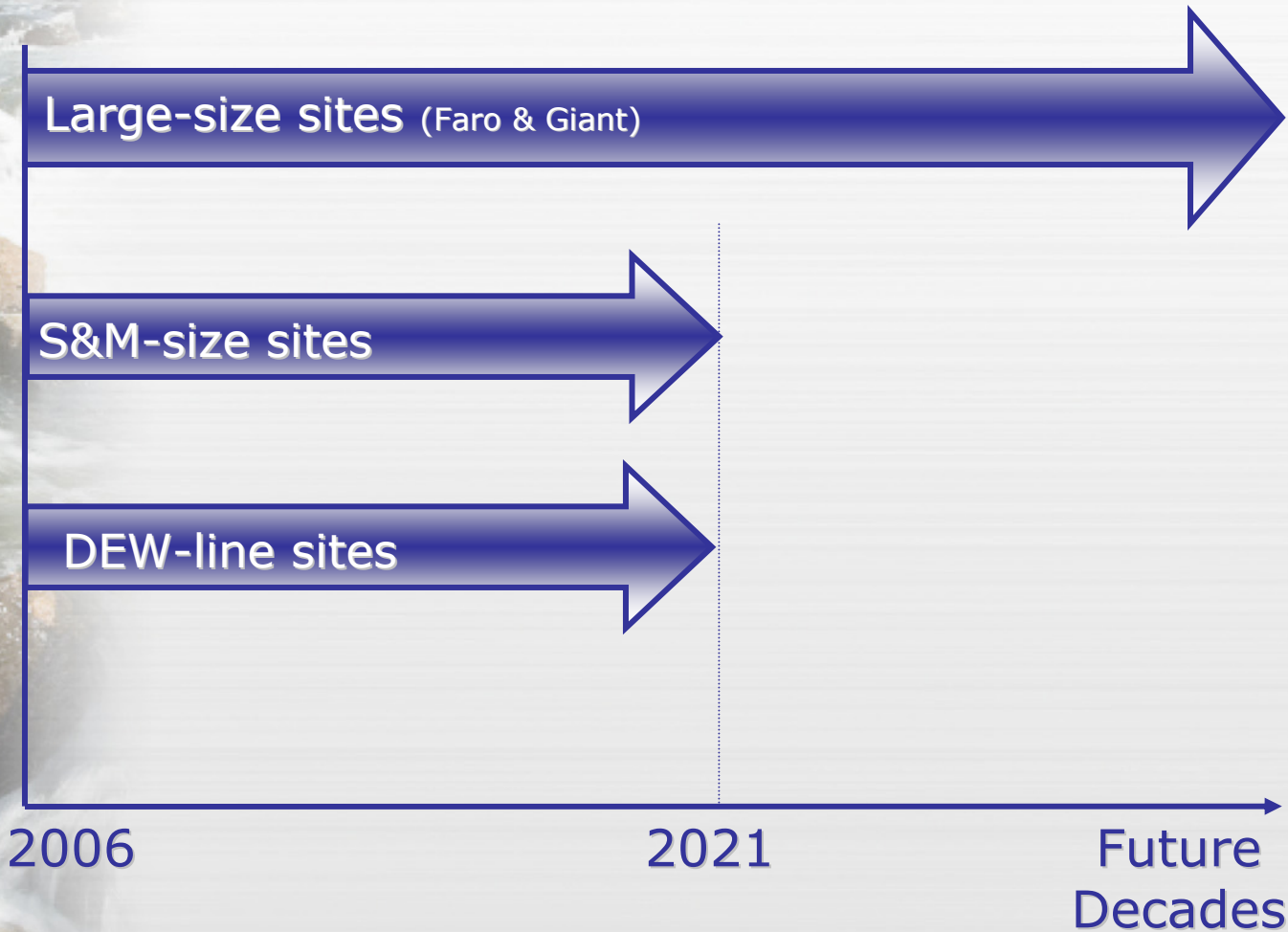
Ross River:  
867.969.2103

Town of Faro:  
867.994.2728

**Yukon**  
Government

Canada

# Remediation Timeframe



[info@faromine.ca](mailto:info@faromine.ca) | [www.faromine.ca](http://www.faromine.ca)

**Pelly Crossing:**  
867.537.3144

**Ross River:**  
867.969.2103

**Town of Faro:**  
867.994.2728

**Yukon**  
Government

**Canada**

# Unique Challenges in the North

- Remote sites
  - Mobilization challenges
  - Winter road and air access
- Short field season
- Permafrost
  - Use in construction
  - Climate change implications
- Wildlife
  - Sensitive areas
  - Traditional land use
  - Health & safety (bear attacks)
- Labour & Construction Costs
  - Competing for resources
  - Winter roads

[info@faromine.ca](mailto:info@faromine.ca) | [www.faromine.ca](http://www.faromine.ca)

Pelly Crossing:  
867.537.3144

Ross River:  
867.969.2103

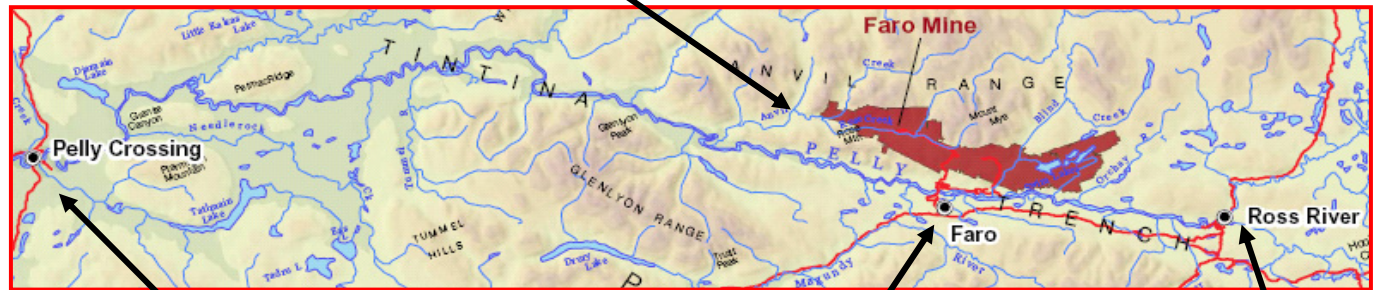
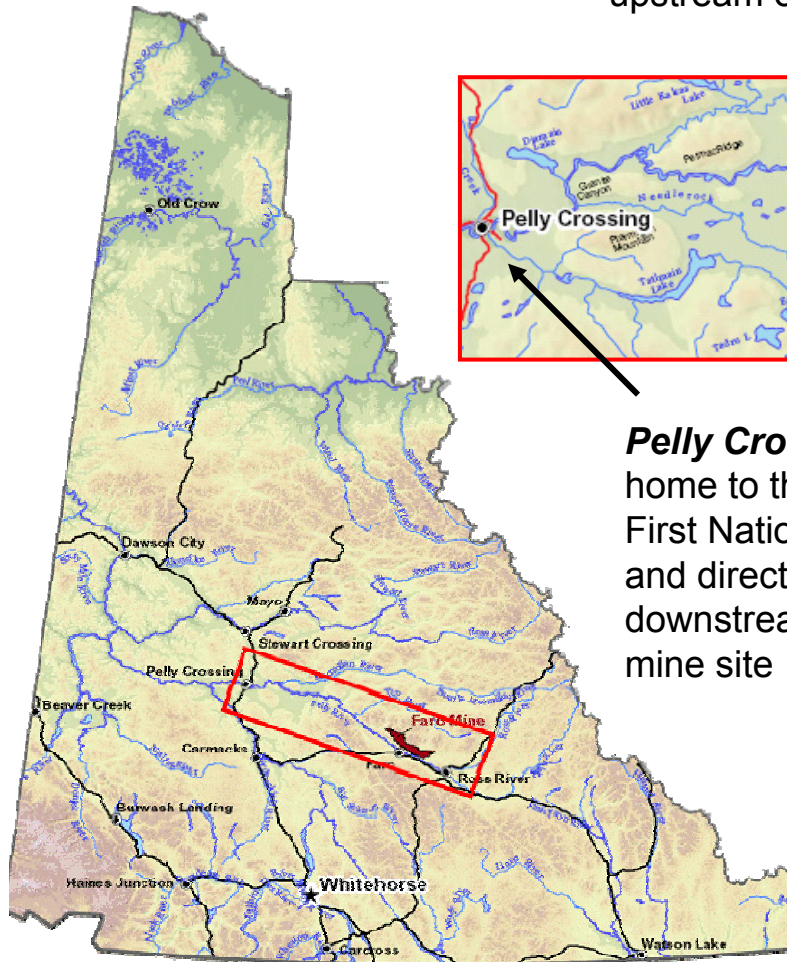
Town of Faro:  
867.994.2728

**Yukon**  
Government

Canada

# Faro Mine Complex: **General Location**

**Faro Mine** – Pb/Zn mine operational from 1969 to 1998; located in the traditional territory of the Ross River Dena Council, and upstream of the community of Pelly Crossing

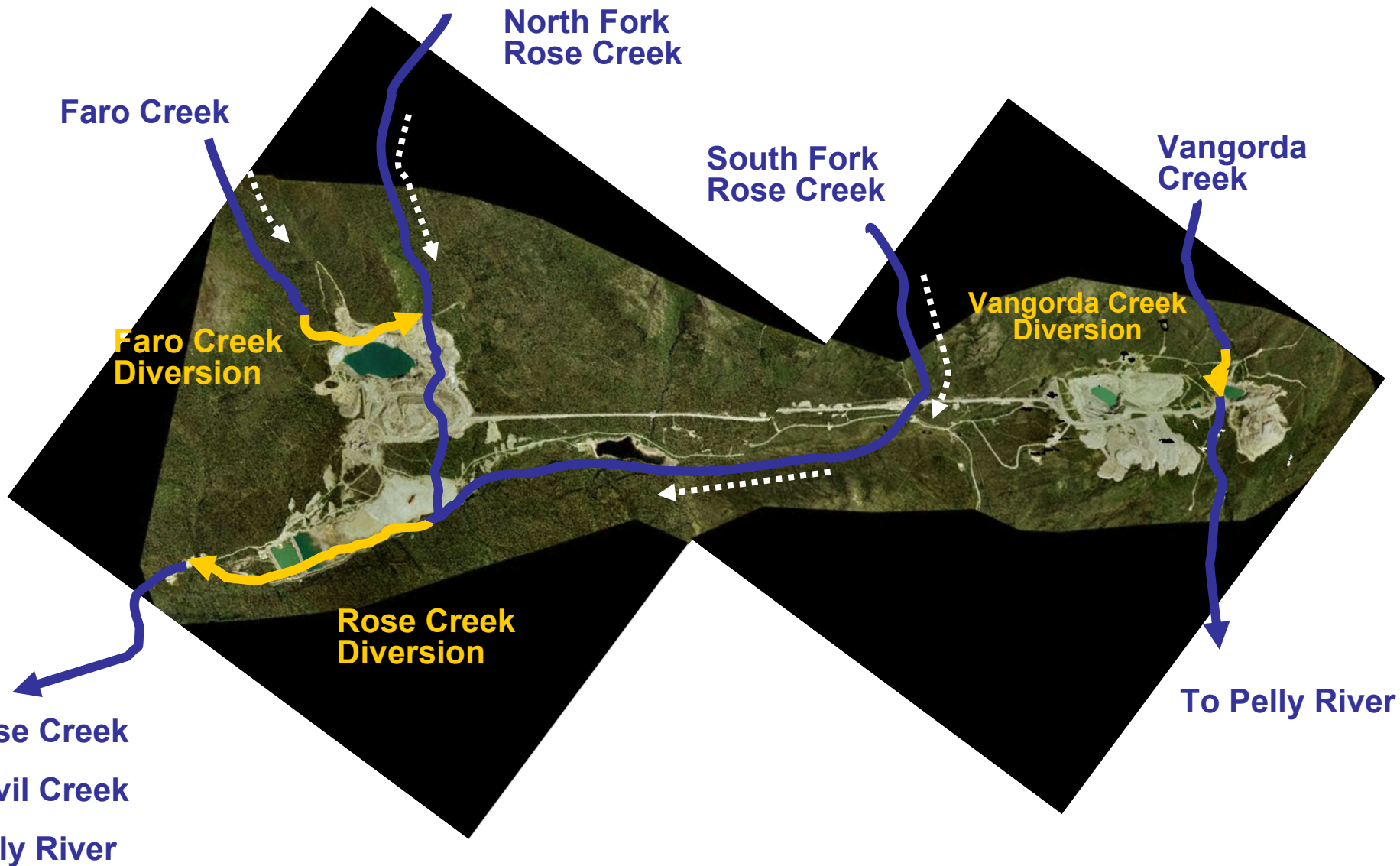


**Pelly Crossing**  
home to the Selkirk First Nation (SFN) and directly downstream of the mine site

**Town of Faro**  
established to service the Faro Mine in 1969, now home to 400 people

**Ross River**  
home to the Ross River Dena Council (RRDC), part of the Kaska Nation

# Faro Mine Complex: **Site Overview**



# Faro Mine Complex:

## History (1969 – 1998)

- 1969** Faro Mine opens & Town of Faro established
- 1970s** Largest lead/zinc mine in Canada • 15% of world's Pb/Zn output • population of Faro reaches 2000 by early 1980's.
- 1982** First of numerous shutdowns • population of Faro drops to 97 by mid-1980's.
- 1998** Reclamation bond in place approx. \$14 million  
• after 29 years of intermittent operations, last owner placed into receivership • care and maintenance carried out by receiver

[info@faromine.ca](mailto:info@faromine.ca) | [www.faromine.ca](http://www.faromine.ca)

Pelly Crossing:  
867.537.3144

Ross River:  
867.969.2103

Town of Faro:  
867.994.2728

**Yukon**  
Government

Canada

# Faro Mine Complex: Site Components

## Faro Mine Area



## Vangorda Plateau



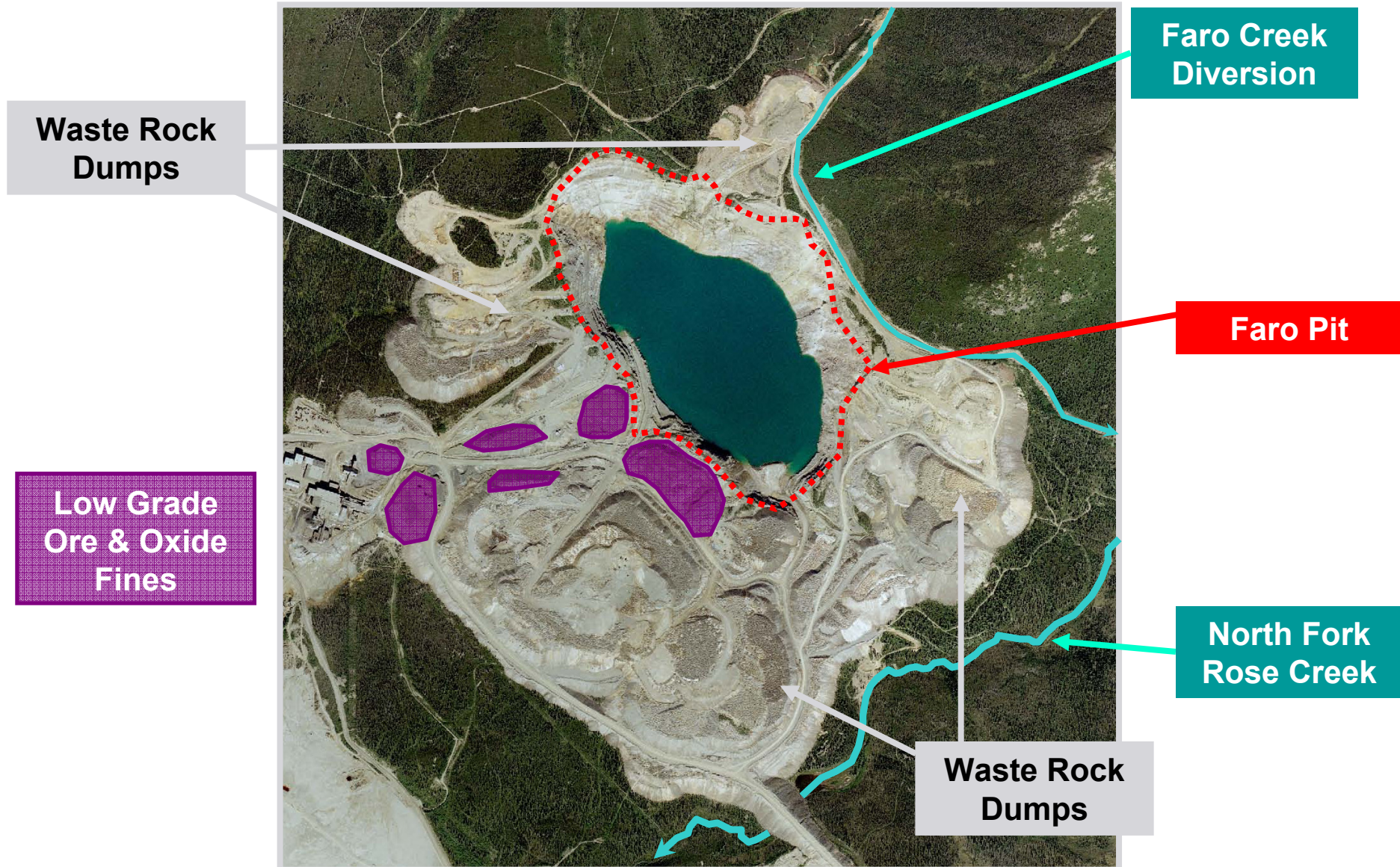
### Components

- 70 million MT tailings
- 4 dams
- 1 open pit – Faro Pit
- 2 stream diversions
- 250 million MT waste rock

### Components

- No tailings
- 2 open pits: Vangorda & Grum
- 1 stream diversion
- 70 million MT waste rock

# Faro Mine Complex: Faro Pit Components



# Faro Mine Area

## Faro Pit



13. 7. 2002



. 7. 2002

7. 2002

02

ine.ca

# Faro Mine Area

## Waste Rock



[info@faromine.ca](mailto:info@faromine.ca) | [www.faromine.ca](http://www.faromine.ca)

**Pelly Crossing:**  
867.537.3144

**Ross River:**  
867.969.2103

**Town of Faro:**  
867.994.2728



# Faro Mine Area

## Waste Rock



[info@faromine.ca](mailto:info@faromine.ca) | [www.faromine.ca](http://www.faromine.ca)

**Pelly Crossing:**  
867.537.3144

**Ross River:**  
867.969.2103

**Town of Faro:**  
867.994.2728

**Yukon**  
Government

**Canada**

# Faro Mine Area

## Waste Rock



[info@faromine.ca](mailto:info@faromine.ca) | [www.faromine.ca](http://www.faromine.ca)

**Pelly Crossing:**  
867.537.3144

**Ross River:**  
867.969.2103

**Town of Faro:**  
867.994.2728

**Yukon**  
Government

**Canada**

# Faro Mine Area

## Mill Buildings



[info@faromine.ca](mailto:info@faromine.ca) | [www.faromine.ca](http://www.faromine.ca)

**Pelly Crossing:**  
867.537.3144

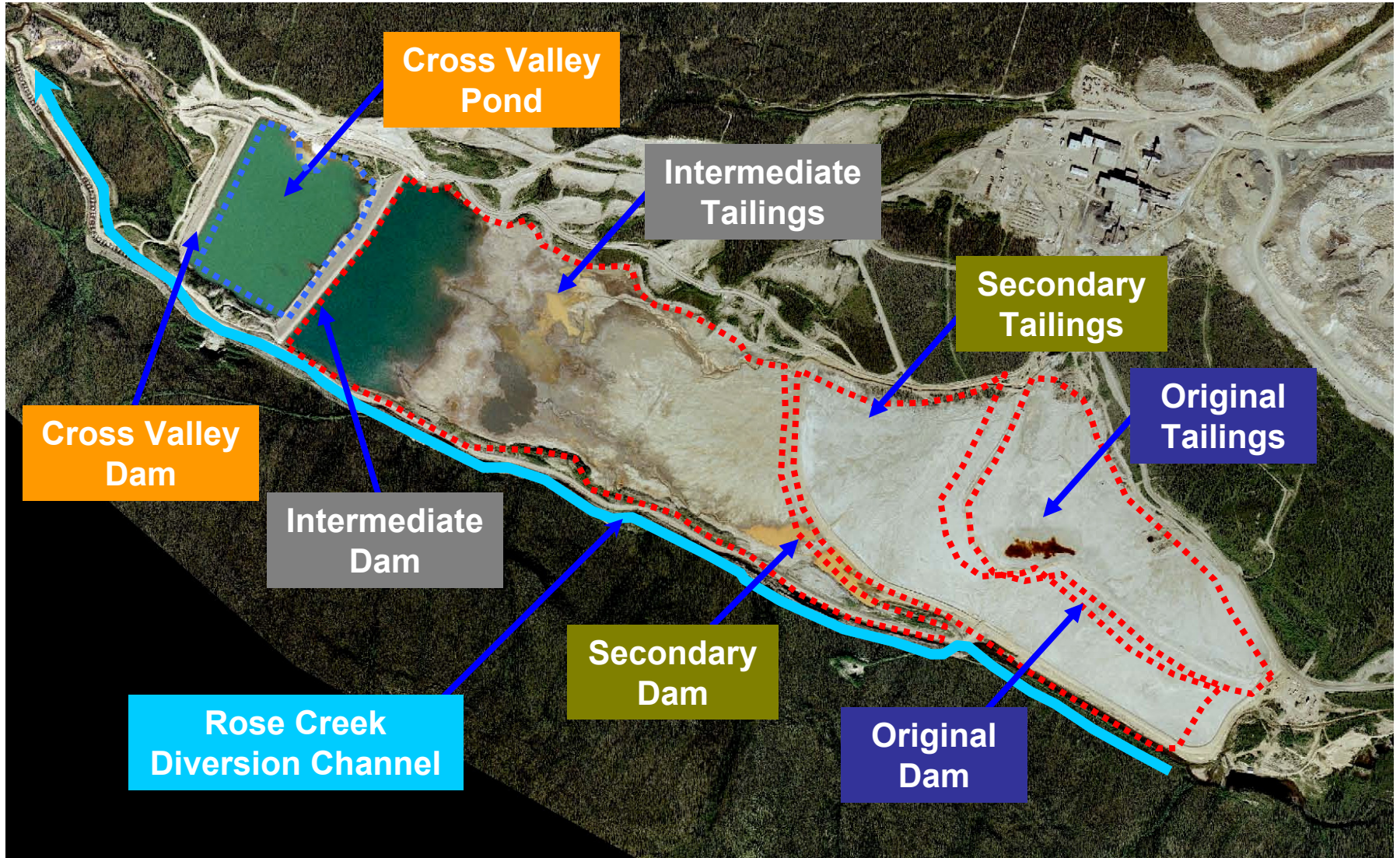
**Ross River:**  
867.969.2103

**Town of Faro:**  
867.994.2728

**Yukon**  
Government

**Canada**

# Faro Mine Complex: Tailings Components



# Faro Mine Area

## Rose Creek Tailings Facility



[info@faromine.ca](mailto:info@faromine.ca) | [www.faromine.ca](http://www.faromine.ca)

**Pelly Crossing:**  
867.537.3144

**Ross River:**  
867.969.2103

**Town of Faro:**  
867.994.2728

**Yukon**  
Government

**Canada**

# Faro Mine Area

## Rose Creek Tailings Facility



867.537.3144

867.969.2103

867.994.2728

**YUKON**  
Government

Canada

# Faro Mine Complex: Tailings Groundwater



# Faro Mine Complex: Vangorda Plateau Components



# Faro Mine Complex: Overarching Closure Objectives

There are 5 *objectives* associated with a final closure and remediation plan:

1. Protect human health & safety
2. Protect, and to the extent practicable, restore the environment including land, air, water, fish and wildlife
3. Return the mine site to an acceptable state of use that reflects pre-mining land use where practicable
4. Maximize local and Yukon socio-economic benefits
5. Manage long-term site risk in a cost effective manner

[info@faromine.ca](mailto:info@faromine.ca) | [www.faromine.ca](http://www.faromine.ca)

Pelly Crossing:  
867.537.3144

Ross River:  
867.969.2103

Town of Faro:  
867.994.2728

**Yukon**  
Government

Canada



# Faro Mine Complex: Prior to Closure Option Selection

Closure Options: \$ 400-800 million

Faro Mine Site currently under the Care and Maintenance

Closure plan development by fall 2009, submitted for initial federal approval, and Yukon regulatory review

Implementation start approx 2012 • implementation period 10-40 years, followed by 500+ years of water treatment and other care and maintenance activities

***No walk away solution*** – collection and treatment of contaminated water will be needed for several hundred years

[info@faromine.ca](mailto:info@faromine.ca) | [www.faromine.ca](http://www.faromine.ca)

Pelly Crossing:  
867.537.3144

Ross River:  
867.969.2103

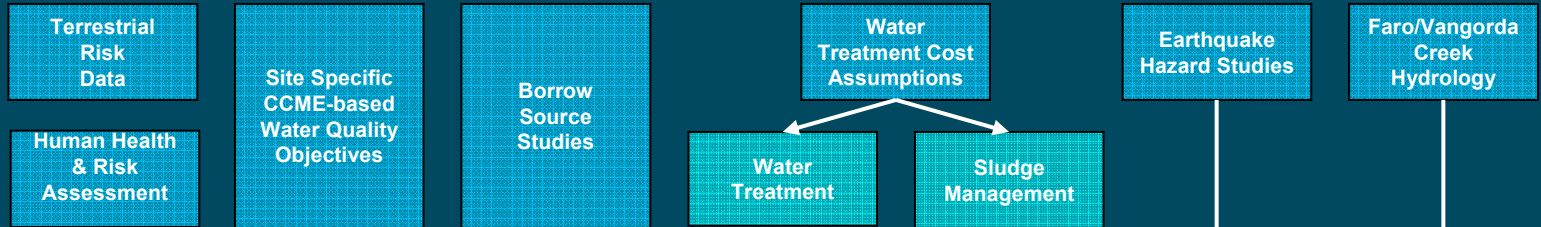
Town of Faro:  
867.994.2728

**Yukon**  
Government

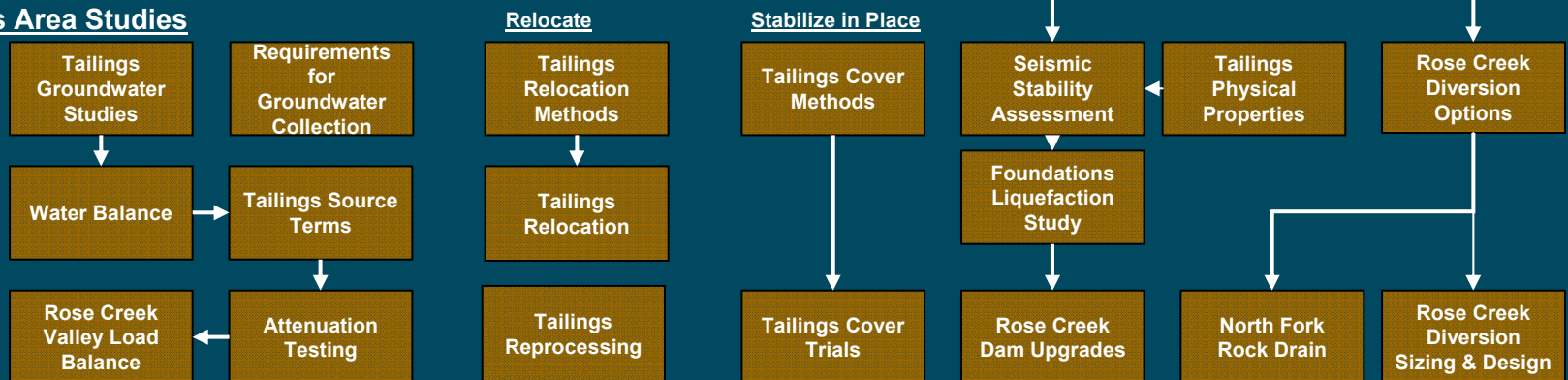
Canada

# Faro Mine Complex: Technical Studies 2003-06

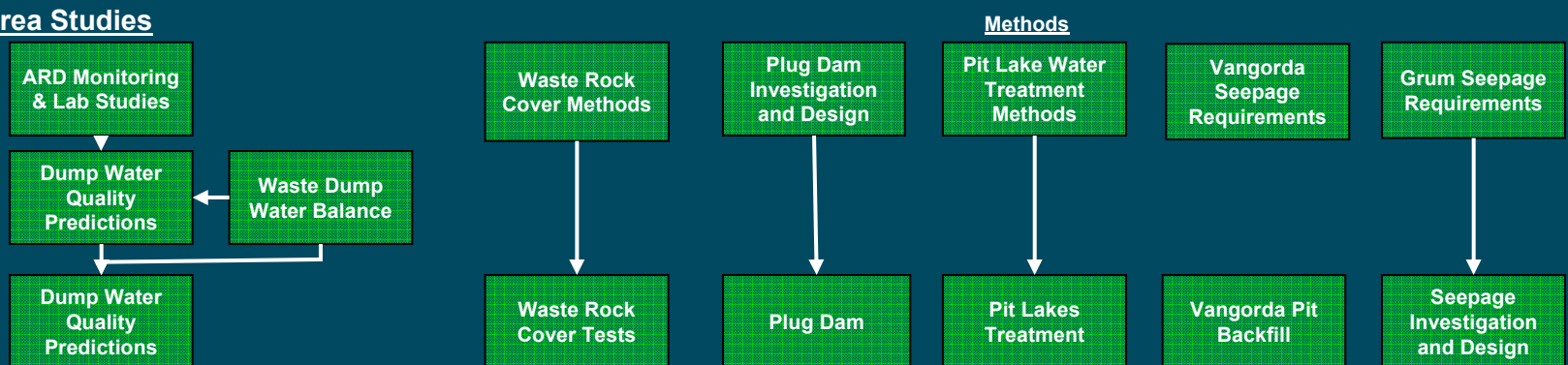
## Basic Technical Studies



## Tailings Area Studies



## Mine Area Studies





# Environmental Issues:

## Tailings

### Acid generation & release of metals

(continue to increase 400-600 yrs)



### Ground & Surface Water Contamination

(Groundwater “breakthrough” expected in 10-20 years)

### Stability of dams/diversion

(Probable Maximum Flood & Maximum Credible Earthquake)



### Mass tailings release to aquatic environment after extreme event

(Rose Creek, Anvil Creek, Pelly River)

### Dust transport

(from tailings and mill area)



### Contamination of terrestrial environment

(ongoing – currently no risk to human and ecological health)

[info@faromine.ca](mailto:info@faromine.ca) | [www.faromine.ca](http://www.faromine.ca)

Pelly Crossing:  
867.537.3144

Ross River:  
867.969.2103

Town of Faro:  
867.994.2728

**Yukon**  
Government

Canada



# Environmental Issues:

## Waste Rock

### Acid generation & release of metals

(continue to increase 400-600 yrs)



### Ground & Surface Water Contamination

(waste rock varies in composition & potential to release metals)

### Exposed Waste Rock Piles

(320 million MT in total across whole site)



### Direct contact by human/animals

### & future land use and aesthetics

(mine complex in traditional territory of Ross River Dena)

[info@faromine.ca](mailto:info@faromine.ca) | [www.faromine.ca](http://www.faromine.ca)

Pelly Crossing:  
867.537.3144

Ross River:  
867.969.2103

Town of Faro:  
867.994.2728



Canada

# Environmental Issues:

## Water Diversions

Three main stream diversions convey water around open pits and the Rose Creek Tailings impoundment

Stream diversions were designed for short-term life spans to support active mining operations

Any diversion relied upon for a final remediation plan must be upgraded to acceptable design standards; Probable Maximum Flood and Maximum Credible Earthquake

[info@faromine.ca](mailto:info@faromine.ca) | [www.faromine.ca](http://www.faromine.ca)

Pelly Crossing:  
867.537.3144

Ross River:  
867.969.2103

Town of Faro:  
867.994.2728

**Yukon**  
Government

Canada

# Environmental Issues: Water Diversions



Pelly Crossing:  
867.537.3144

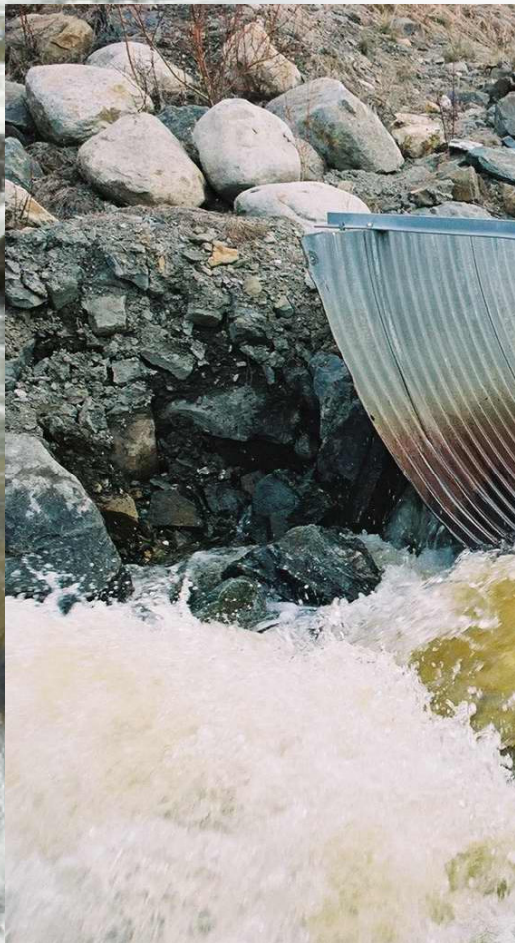
Ross River:  
867.969.2103

Town of Faro:  
867.994.2728

**Yukon**  
Government

Canada

# Environmental Issues: Water Diversions



[info@faromine.ca](mailto:info@faromine.ca) | [www.faromine.ca](http://www.faromine.ca)

**Pelly Crossing:**  
867.537.3144

**Ross River:**  
867.969.2103

**Town of Faro:**  
867.994.2728

**Yukon**  
Government

**Canada**



# Faro Mine Complex: Independent Peer Review Panel

Independent panel of 9 experts in aspects of Mine Remediation:

Tony Hodge

Ken Raven

Randy Knapp

Laurie Chan

Bill Price

Leslie Smith

Terry Mudder

Ken Froese

Andy Robertson

## IPRP Mandate

1. Has the full range of viable closure alternatives been considered?
2. Have the technical studies characterized the alternatives in sufficient detail to allow selection of a preferred alternative?
3. Are there any concerns or deficiencies in the technical studies, such that the alternatives may be clarified or modified, as necessary.

[info@faromine.ca](mailto:info@faromine.ca) | [www.faromine.ca](http://www.faromine.ca)

Pelly Crossing:  
867.537.3144

Ross River:  
867.969.2103

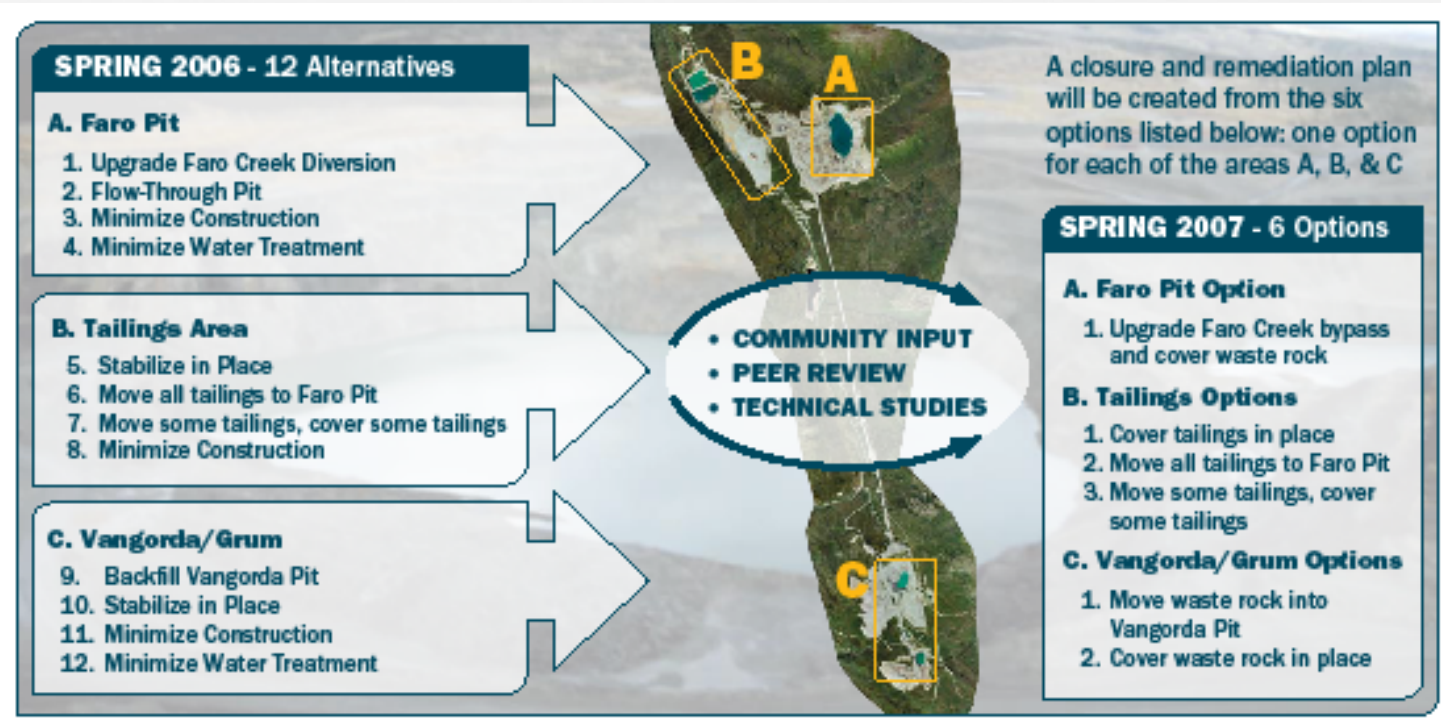
Town of Faro:  
867.994.2728

**Yukon**  
Government

Canada

# Faro Mine Complex: Refinement of Closure Options

Based upon Peer Review recommendations and outputs of community consultation, closure alternatives were refined into 6 closure options



info@faromine.ca | www.faromine.ca

Pelly Crossing:  
867.537.3144

Ross River:  
867.969.2103

Town of Faro:  
867.994.2728

**Yukon**  
Government

Canada

# Faro Mine Complex: Short-listed Closure Options

## Two areas

### A. Faro Mine Area

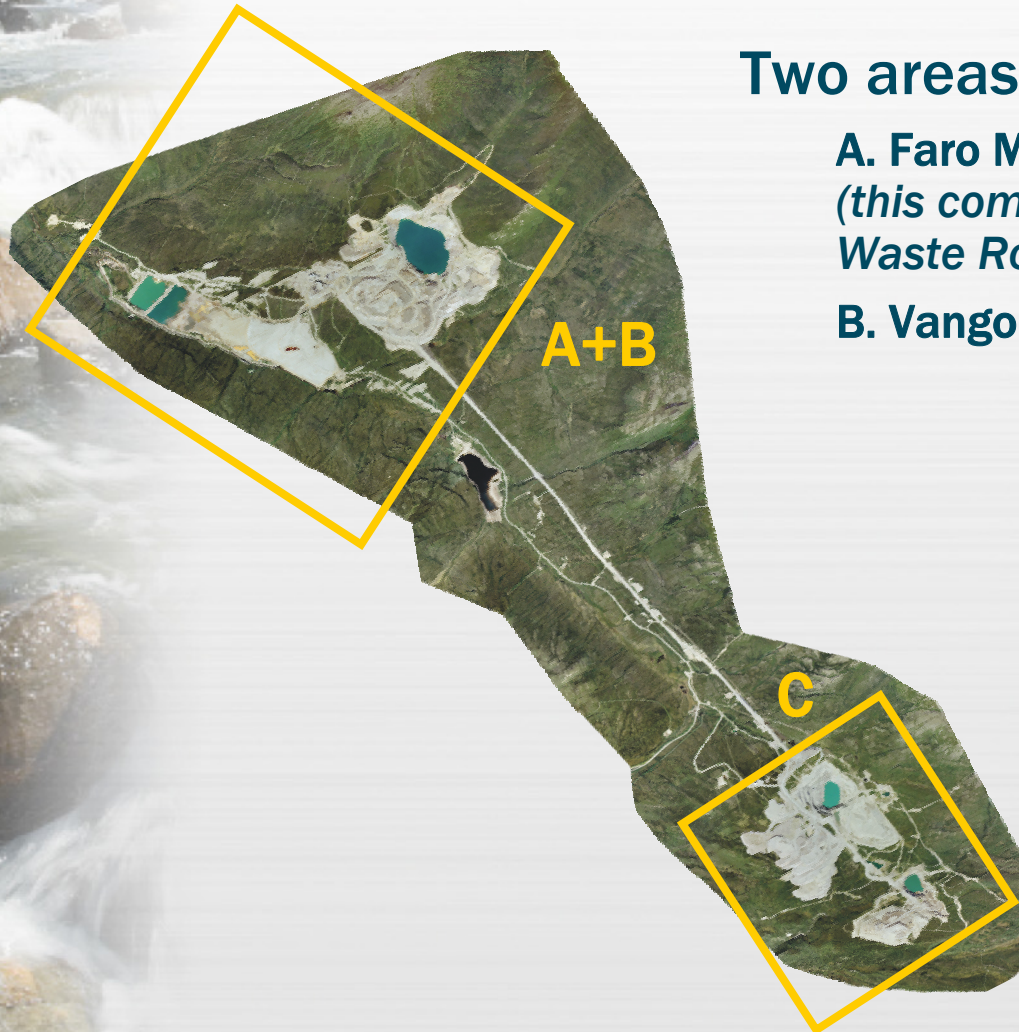
*(this combines the Faro Pit and Waste Rock with the Tailings Area)*

### B. Vangorda/Grum Area

3 options for the Faro Mine Area

2 options for the Vangorda/Grum Area

**5 total**



[info@faromine.ca](mailto:info@faromine.ca) | [www.faromine.ca](http://www.faromine.ca)

Pelly Crossing:  
867.537.3144

Ross River:  
867.969.2103

Town of Faro:  
867.994.2728

**Yukon**  
Government

Canada

# Faro Mine Complex: Short-listed Closure Options

## Combined Faro Mine Area

Move All  
Tailings

+

Cover Tailings

or

Move Partial  
Tailings and  
Cover Partial  
Tailings

+

or

+

Upgrade Faro  
Creek Diversion  
and  
Cover/Revegetate  
Faro Waste Rock

## Vangorda/Grum Mine Area

Move Vangorda Waste  
Rock into Vangorda Pit

or

Cover Vangorda Waste  
Rock in Place

[info@faromine.ca](mailto:info@faromine.ca) | [www.faromine.ca](http://www.faromine.ca)

Pelly Crossing:  
867.537.3144

Ross River:  
867.969.2103

Town of Faro:  
867.994.2728

**Yukon**  
Government

Canada



# Faro Mine Complex: Common Elements of Options

Any overall closure plan for the Faro Mine Complex will include some common elements:

- Resloping and covering waste rock
- Revegetation of soil covers and other areas
- Diversion of clean water around the site
- Long-term collection and treatment of contaminated water
- Long-term management of water treatment sludge
- Long-term storage of water in pits
- Long-term maintenance of remaining site facilities (diversions, covers, water collection systems, water treatment systems, dams, etc.)
- Long-term monitoring of environmental conditions (water, animals, plants, climate, etc.)

[info@faromine.ca](mailto:info@faromine.ca) | [www.faromine.ca](http://www.faromine.ca)

Pelly Crossing:  
867.537.3144

Ross River:  
867.969.2103

Town of Faro:  
867.994.2728

**Yukon**  
Government

Canada



# Combined Faro Mine Area Option 1

Upgrade Faro Creek diversion  
Reslope, cover and revegetate Faro  
waste rock

**Move all tailings**

**Estimated Jobs: 975 person years**

**Estimated Cost: \$590 M**

[info@faromine.ca](mailto:info@faromine.ca) | [www.faromine.ca](http://www.faromine.ca)

Pelly Crossing:  
867.537.3144

Ross River:  
867.969.2103

Town of Faro:  
867.994.2728

**Yukon**  
Government

Canada

# All Options:

## Upgrade Faro Creek Diversion / Cover Faro Waste Rock

### Closure Approach

#### What is involved?

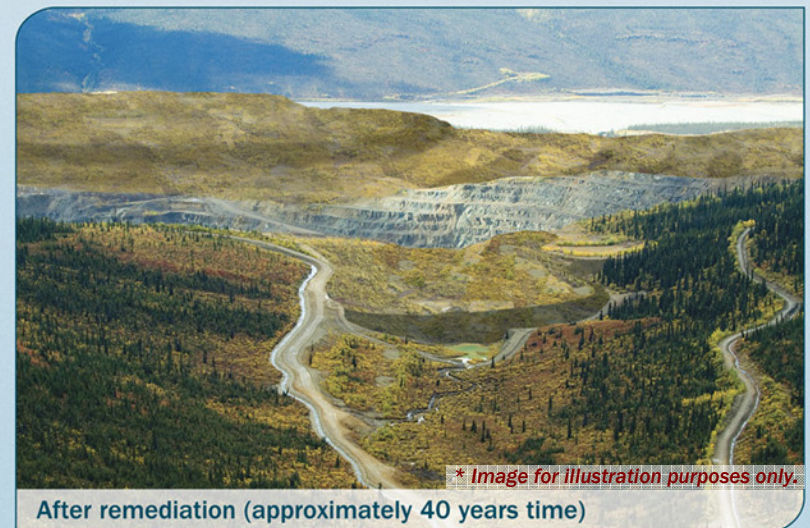
- Build new diversion channel for Faro Creek
  - Remove North Fork Rock Drain
  - Build lined channel for North Fork Rose Creek
  - Waste Rock
    - Reslope and cover with soil
    - Possibly move some waste rock to Faro Pit
  - Revegetate covered waste rock
- Move tailings from Emergency Tailings Area to Faro Pit or Tailings Area.
  - Collect and treat contaminated water from below waste rock, Zone 2 Pit and in Faro Pit (100s of years)
  - Maintain covers and channels (100s of years)
  - Monitor environmental conditions and adapt to changes

**Estimated cost to build and maintain: \$150M**

**Estimated employment: 230 person years**

*Each option is designed to meet technical and environmental standards.*

*An overall closure plan will be created by choosing one option for the Faro Mine Area and one for the Vangorda/Grum Area.*



*\* Image for illustration purposes only.*

# Combined Faro Mine Area Option 1: Move all tailings

## Move All Tailings to Faro Pit

### What is involved?

- Mix tailings with lime and water
- Pump tailings to Faro Pit
- Clean up remaining tailings with trucks and loaders
- Collect and treat contaminated water from under tailings (20 years?)
- Cut through dams and revegetate valley
- Construct channel for Rose Creek and put Rose Creek back in the valley when soil and water are clean
- May have to collect and treat contaminated water from mine area in Rose Creek Valley (100s of years)
- Monitor environmental conditions and adapt to changes

**Estimated cost to build and maintain: \$440M**

**Estimated employment: 745 person years**

*Each option is designed to meet technical and environmental standards.*

*An overall closure plan will be created by choosing one option for the Faro Mine Area and one for the Vangorda/Grum Area.*



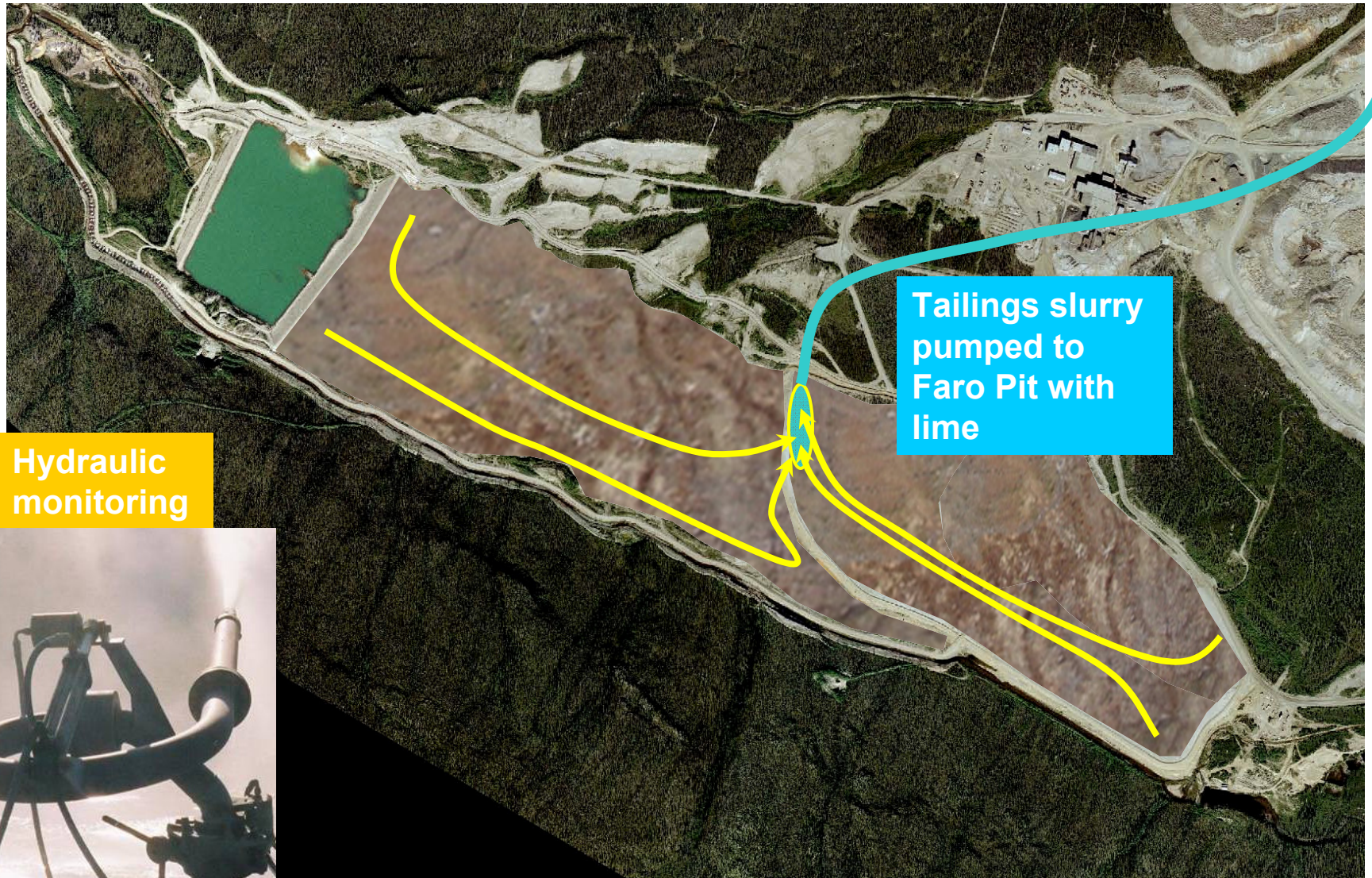
Before remediation (Now)



After remediation (approximately 40 years time)

*\* Image for illustration purposes only.*

# Combined Faro Mine Area Option 1: Moving Tailings



Hydraulic  
monitoring

Tailings slurry  
pumped to  
Faro Pit with  
lime



# Combined Faro Mine Area Option 1: Clean Up of Valley



2. Collect and treat water until valley is clean (10 to 20 years)

1. Use trucks and excavators to clean up contaminated material left behind

3. Cut through dams and the diversion and return Rose Creek to the valley





# Combined Faro Mine Area Option 2

Upgrade Faro Creek diversion  
Reslope, cover and revegetate Faro  
waste rock

**Cover tailings with soil**

Estimated Jobs: 566 person years

Estimated Cost: \$410 M

[info@faromine.ca](mailto:info@faromine.ca) | [www.faromine.ca](http://www.faromine.ca)

Pelly Crossing:  
867.537.3144

Ross River:  
867.969.2103

Town of Faro:  
867.994.2728

**Yukon**  
Government

Canada

# Combined Faro Mine Area Option 2: Cover tailings with soil

## Cover Tailings with Soil

### What is involved?

- Remove Cross-Valley Dam or change/upgrade it for emergency water storage
- Stabilize Second Dam
- Regrade tailings and cover with waste rock and soil
- Revegetate covered tailings and other areas
- Build/upgrade diversions, channels and spillways to deal with floods
- Collect and treat contaminated water from valley (100s of years)
- Maintain covers, channels and dams (100s of years)
- Monitor environmental conditions and adapt to changes

**Estimated cost to build and maintain: \$260M**

**Estimated employment: 336 person years**

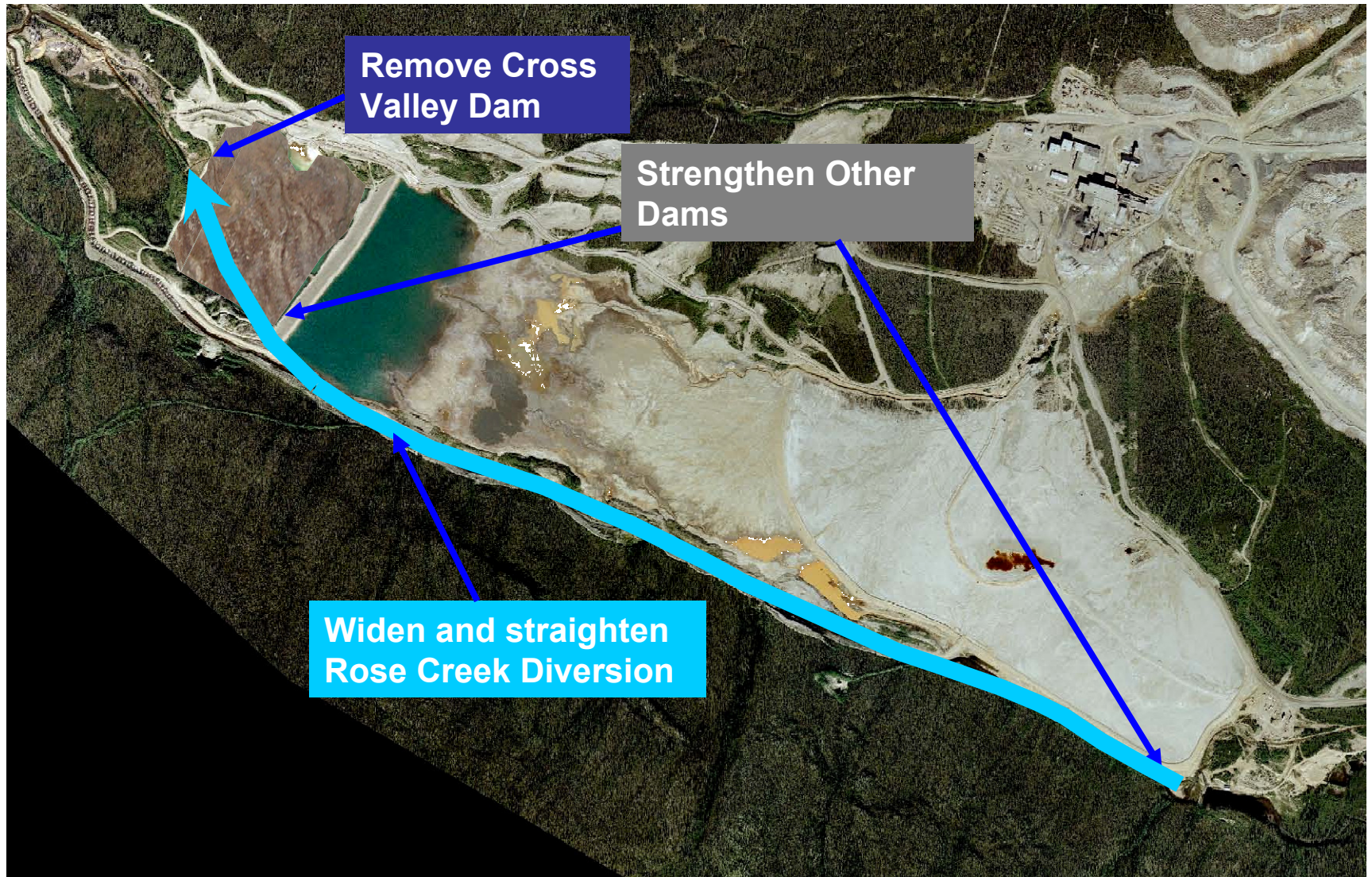
*Each option is designed to meet technical and environmental standards.*

*An overall closure plan will be created by choosing one option for the Faro Mine Area and one for the Vangorda/Grum Area.*



*\* Image for illustration purposes only.*

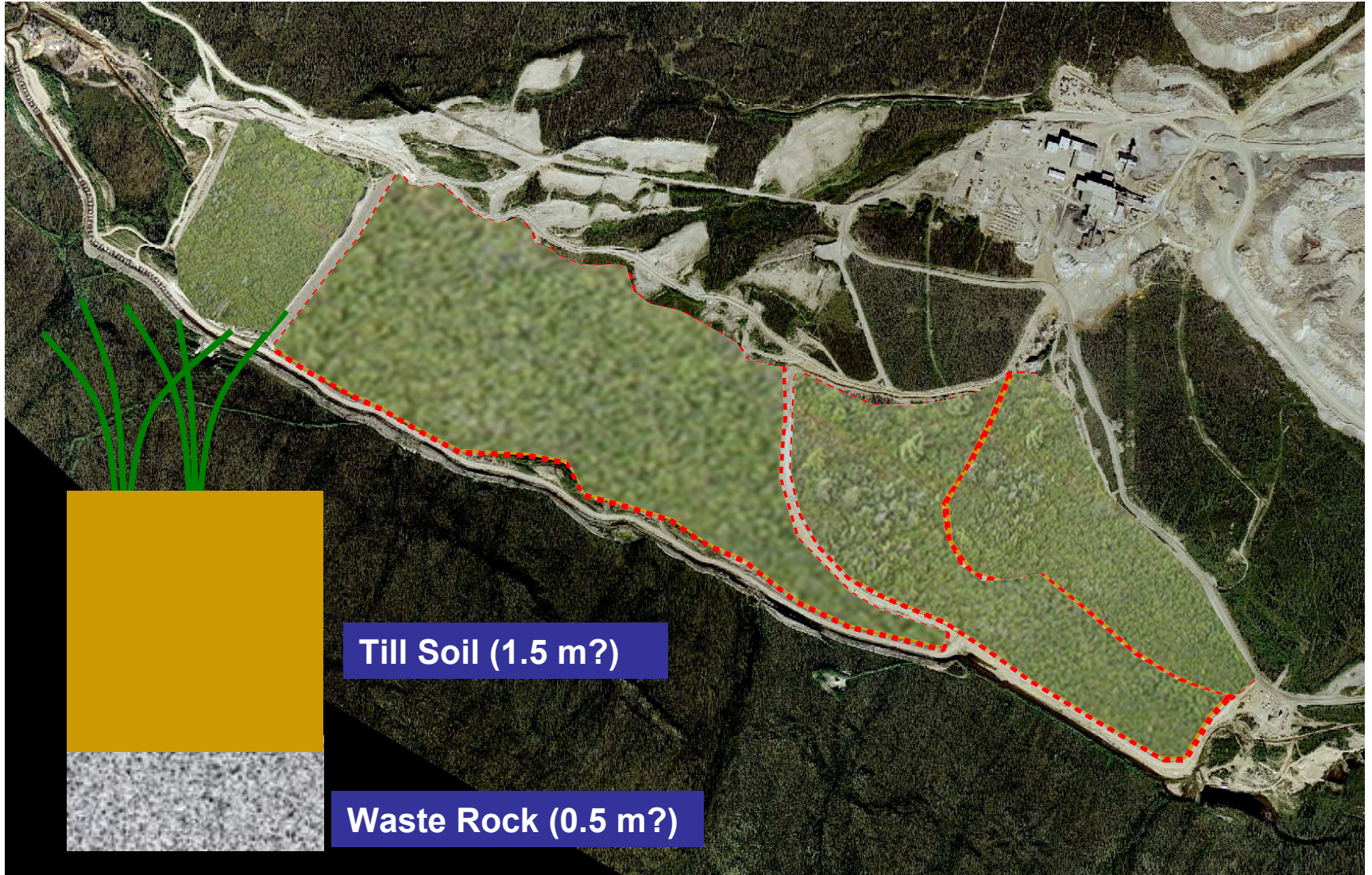
# Combined Faro Mine Area Option 2: Cover tailings with soil



# Combined Faro Mine Area Option 2: Cover tailings with soil



# Combined Faro Mine Area Option 2: Cover tailings with soil





# Combined Faro Mine Area Option 3

Upgrade Faro Creek diversion  
Reslope, cover and revegetate Faro  
waste rock

**Move some tailings and cover  
some tailings with soil**

**Estimated Jobs: 782 person years**

**Estimated Cost: \$490 M**

# Combined Faro Mine Area Option 3:

## Move some tailings and cover some tailings with soil

### Move Some Tailings and Cover Some Tailings

#### What is involved?

- Remove Cross-Valley Dam or change/upgrade it for emergency water storage
- Stabilize Second Dam
- Mix Intermediate Tailings with lime/water and pump to Faro Pit
- Clean up remaining Intermediate Tailings with trucks and loaders
- Regrade Original and Second Tailings and cover with waste rock and soil
- Revegetate covered tailings and valley area
- Upgrade diversion channel for upper part of Rose Creek
- Construct channel for lower part of Rose Creek and return the creek to the valley when soil and water are clean
- Collect and treat contaminated water (100s of years)
- Maintain covers, channels and dams (100s of years)
- Monitor environmental conditions and adapt to changes

**Estimated cost to build and maintain: \$340M**

**Estimated employment: 552 person years**

*Each option is designed to meet technical and environmental standards.*

*An overall closure plan will be created by choosing one option for the Faro Mine Area and one for the Vangorda/Grum Area.*



Before remediation (Now)




After remediation (approximately 40 years time)

*\* Image for illustration purposes only.*

# Combined Faro Mine Area Option 3:

Move some tailings & cover some tailings with soil

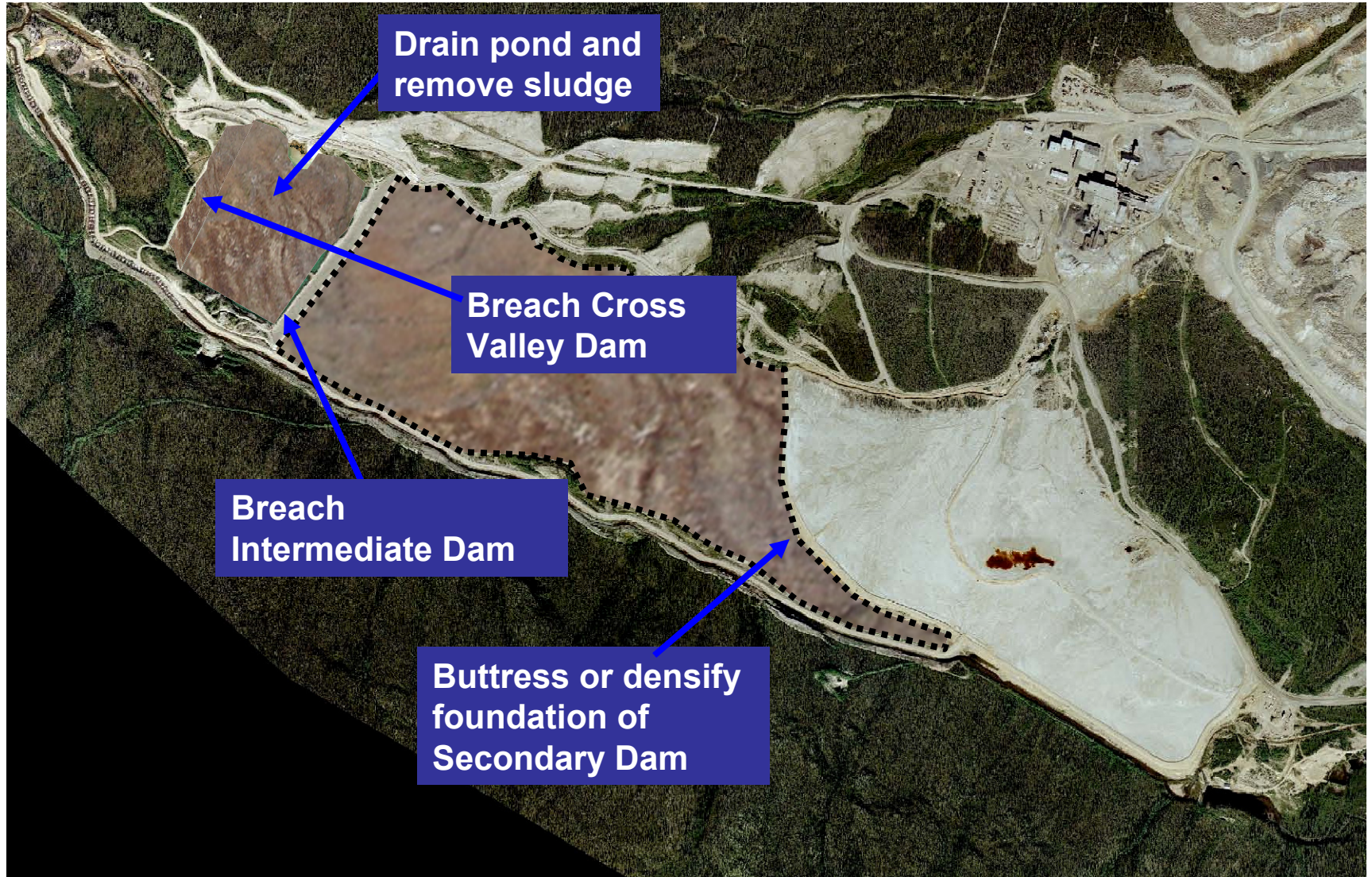


Hydraulically mine and relocate Intermediate Pond tailings to Faro Pit

The image is an aerial photograph of a mining site. On the left side, there is a large, rectangular pond with greenish water. To its right, a large, irregularly shaped area of light-colored, sandy or silty material is outlined with a thick black dashed line. This area represents the tailings to be relocated. In the background, there are several buildings and more tailings piles. The surrounding landscape is a mix of dark green forest and cleared areas.

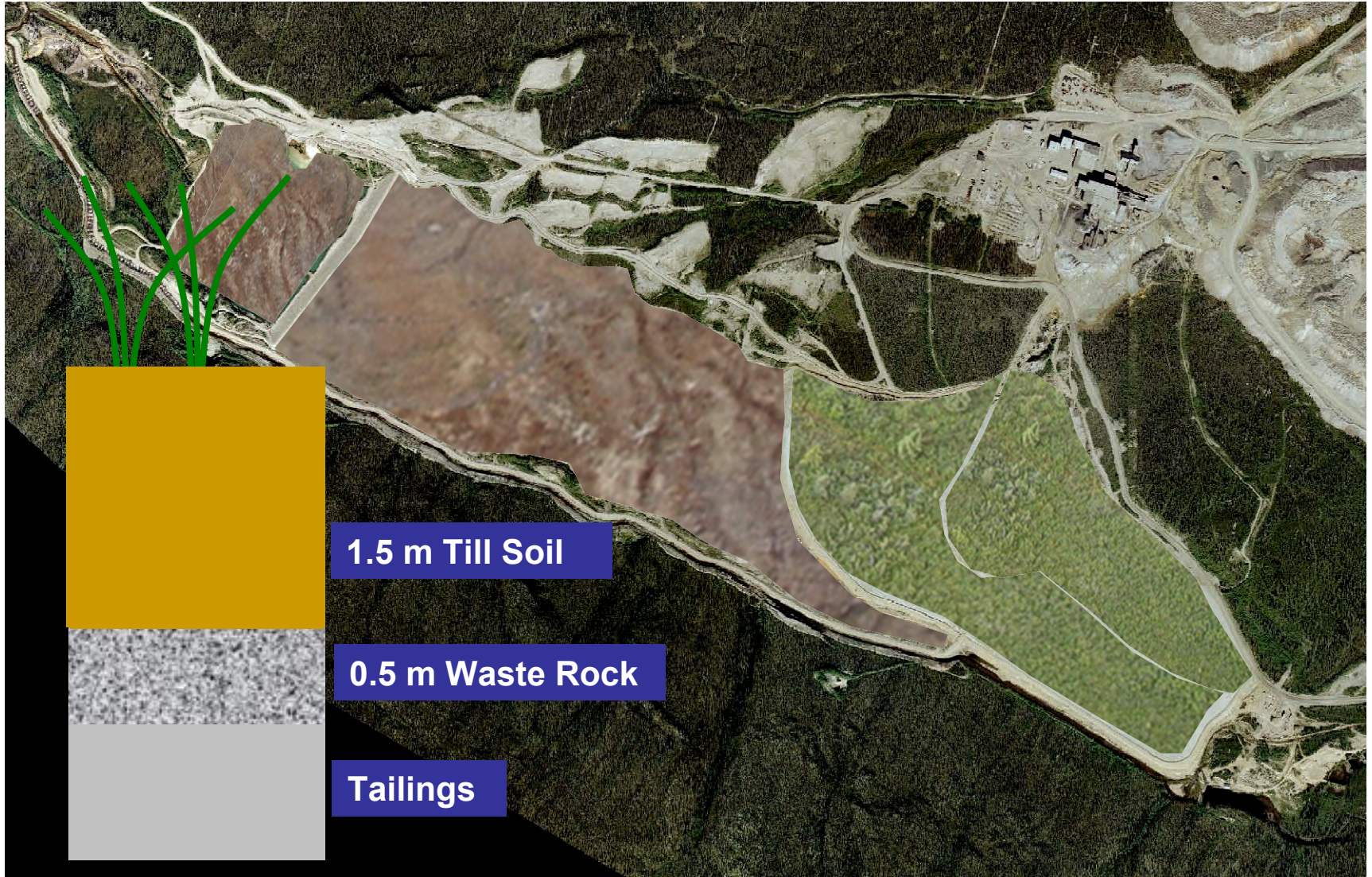
# Combined Faro Mine Area Option 3:

Move some tailings & cover some tailings with soil



# Combined Faro Mine Area Option 3:

Move some tailings & cover some tailings with soil



# Combined Faro Mine Area Option 3:

Move some tailings & cover some tailings with soil

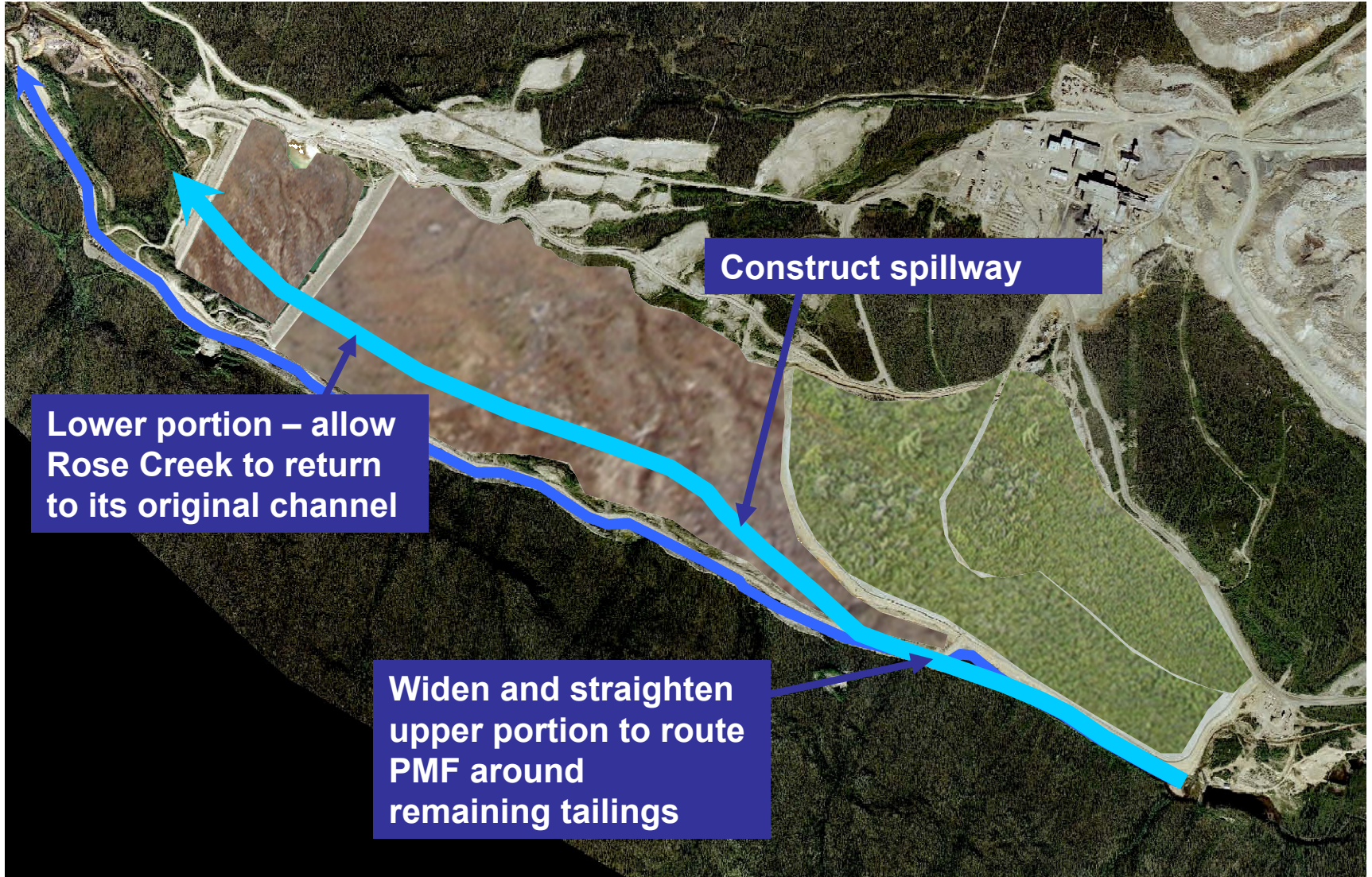


Install wells where needed below relocated tailings, and below second dam

Pump water to treatment plant

# Combined Faro Mine Area Option 3:

Move some tailings & cover some tailings with soil





# Selection of Preferred Option

## Multi-Attribute Utility Analysis

- Structured method to compare remediation options to multiple project objectives
- Used with non-monetary objectives
- Method used for complex decision making applications:
  - Nuclear Waste Management long-term disposal assessment
- Useful for multi-stakeholder assessments where consensus is desired

[info@faromine.ca](mailto:info@faromine.ca) | [www.faromine.ca](http://www.faromine.ca)

Pelly Crossing:  
867.537.3144

Ross River:  
867.969.2103

Town of Faro:  
867.994.2728

**Yukon**  
Government

Canada

# Selection of Preferred Option

## Multi-Attribute Utility Analysis

- Created an assessment team with representation by FN communities and advisors, project technical advisor, peer review, governments
- Hired MUA/decision analysis experts used in NWMO disposal options analysis
- Significant reports going into process:
  - Draft alternatives report
  - IPRP report and comments by expert departments
  - Implementation approach
  - Risk assessment of options

[info@faromine.ca](mailto:info@faromine.ca) | [www.faromine.ca](http://www.faromine.ca)

Pelly Crossing:  
867.537.3144

Ross River:  
867.969.2103

Town of Faro:  
867.994.2728

**Yukon**  
Government

Canada

# Selection of Preferred Option

## How did we go about it?

### Major Steps in assessment were:

1. Converted each project objective into measurable sub-objectives. They are:

- |                             |                         |
|-----------------------------|-------------------------|
| 1. environment              | 5. local land-use       |
| 2. public health and safety | 6. local socio-economic |
| 3. worker health and safety | 7. Yukon socio-economic |
| 4. traditional land use     | 8. cost                 |

2. Worked through factors that influence the sub-objectives
3. For each sub-objective short term (40 years) and long-term (500-1000 years) were considered
4. Developed technical notes describing the performance of each alternative for each sub-objective for both short and long-terms scenarios

[info@faromine.ca](mailto:info@faromine.ca) | [www.faromine.ca](http://www.faromine.ca)

Pelly Crossing:  
867.537.3144

Ross River:  
867.969.2103

Town of Faro:  
867.994.2728

**Yukon**  
Government

Canada

# Selection of Preferred Option

How did we go about it?

Major Steps in assessment were (cont'd):

5. Conducted assessment by individually assigning scores from 0-10 for the expected performance of each option to meet sub-objectives
6. Assigned individual weightings for each sub-objective (relative importance of each objective)
7. Produced bar charts of results
8. Conducted sensitivity analysis to determine the influence of weightings on the results

[info@faromine.ca](mailto:info@faromine.ca) | [www.faromine.ca](http://www.faromine.ca)

Pelly Crossing:  
867.537.3144

Ross River:  
867.969.2103

Town of Faro:  
867.994.2728

**Yukon**  
Government

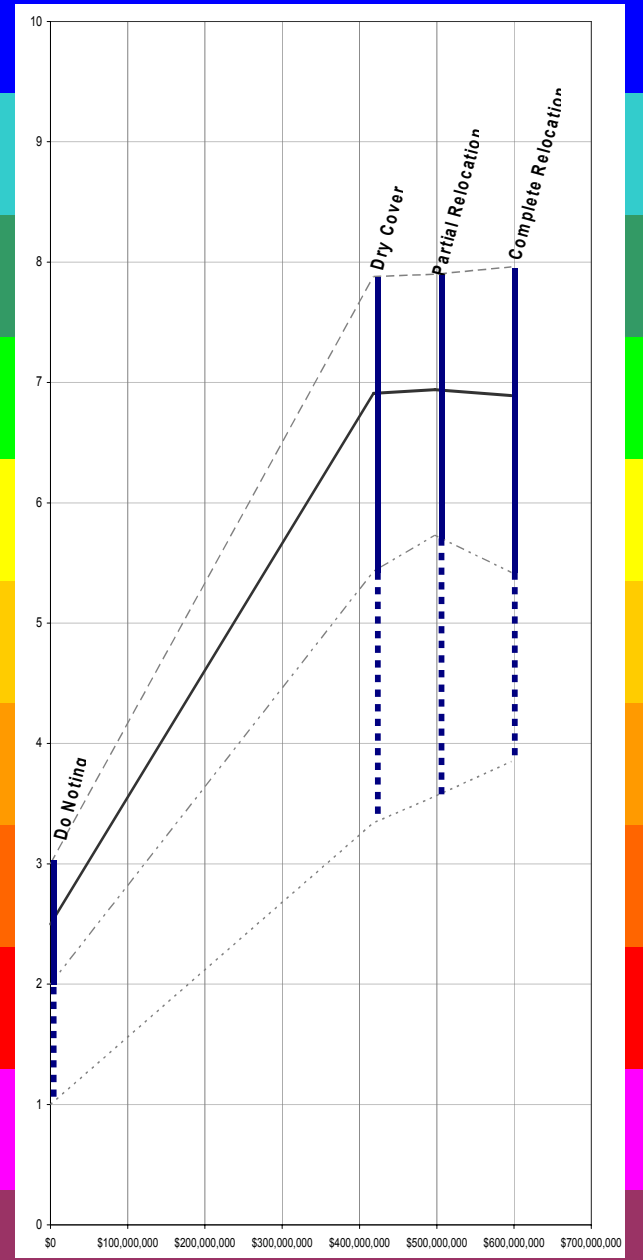
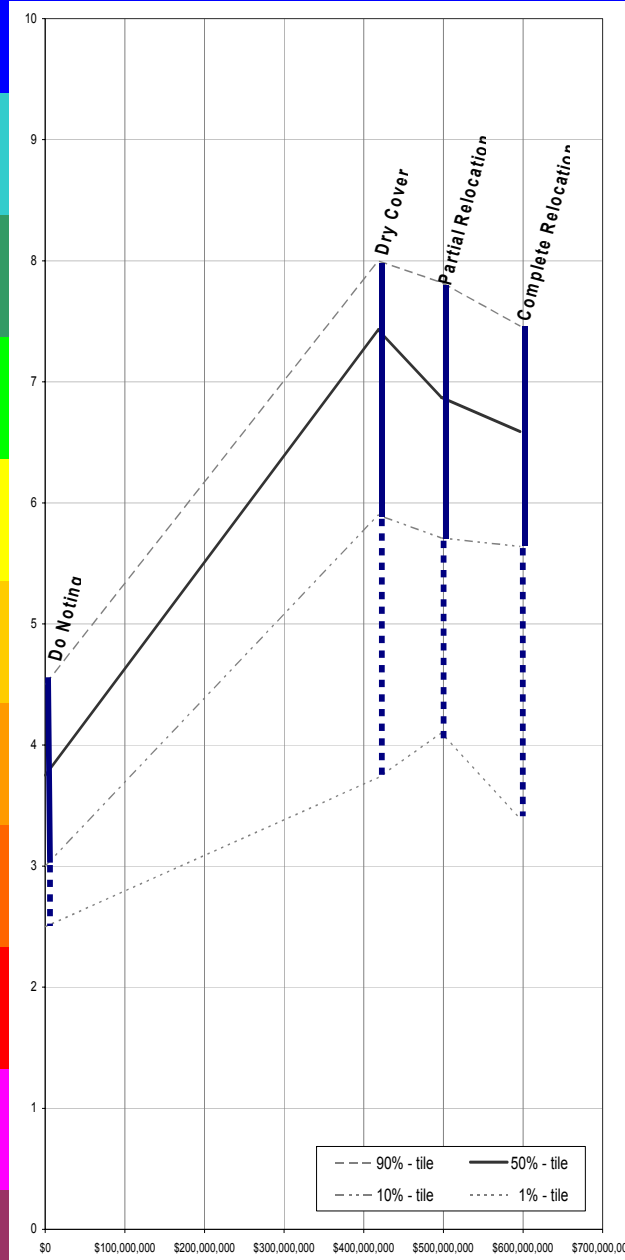
Canada

# Faro Mine & Tailings Environmental Scores

## Short Term

## Long Term

10	Ideal performance. No adverse impact to any aspect of the environment, including aesthetics. The alternative fully restores and protects all water, land, air, fish and wildlife to conditions that are equal to or exceed that which existed prior to the mine. Comprehensive monitoring provides assurance.
9	Very good performance. Impacts are insignificant. No violations to environmental standards will occur. Although some minimal aesthetic affects may remain, the alternative fully restores and protects all highvalue resources. Cleanup and monitoring is best-practice.
8	Good performance. Some minor, localized, temporary impacts to environmental resources. Any violations to standards are minor; exceedences will self-correct within the year. Monitoring is adequate to allow problems to be identified and addressed in a timely fashion.
7	Fair performance. Some exceedences of applicable standards and/or localized, short-term impacts to environmental resources will occur. Effects on plants, fish, and wildlife will be mild and self-correcting within about 3 years.
6	Mediocre performance. There will be a few serious violations of applicable environmental standards. Effects on environmental resources will be significant, but localized and correctable. Regional abundance of the important species will not be seriously affected. Self-correcting in about 10 years.
5	Poor performance. Significant violations and significant problems. There will be serious but correctable damage to some highly valued ecosystem components. Regional abundance of some important species will be affected, and adverse effects will not persist for more than a generation.
4	Very poor performance. Serious problems. Moderate-scale, long-term, ecosystem damage. Regional abundance of important species impacted over multiple generations. Not entirely correctable.
3	Bad performance. Very serious, moderate-scale problems with irreversible (permanent) damage to some of the most highly-valued ecosystem components. Between scores of 2 and 4.
2	Very bad performance. Major problems. Permanent, large-scale, ecosystem damage. Regional loss of some key resources.
1	Terrible performance. Critical problem. Loss of some ecosystem functions. Between scores of 0 and 2.
0	Abominable performance. An environmental disaster. Permanent, large-scale loss of many key species and irreparable damage to ecosystem function.

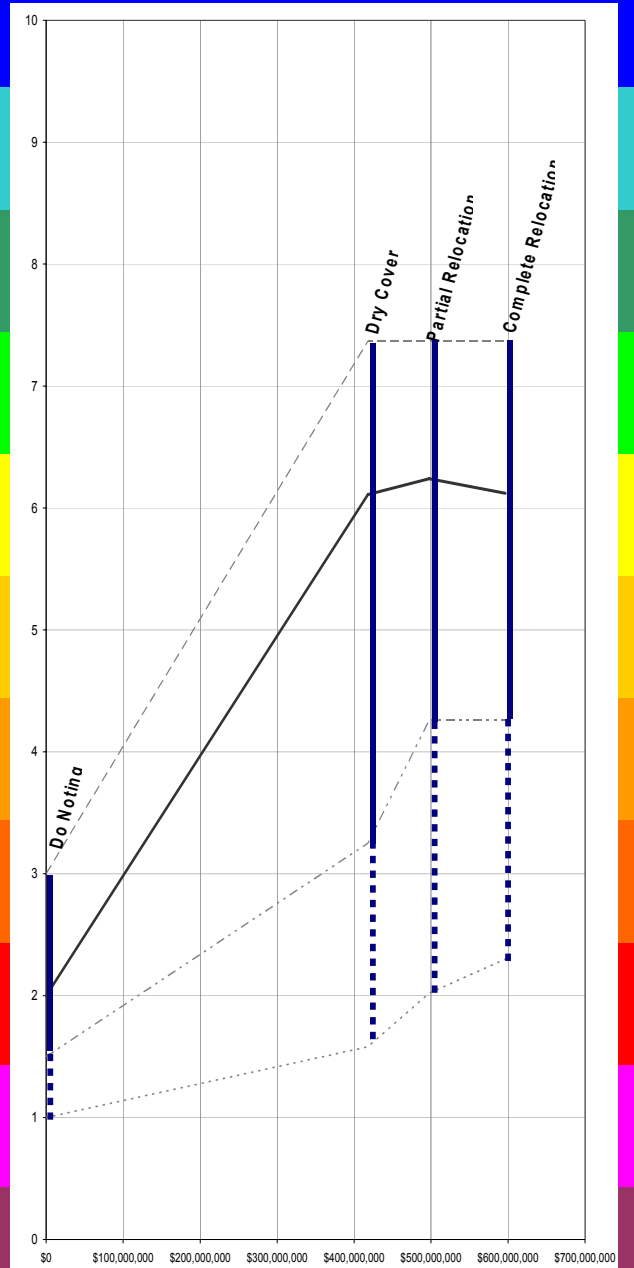
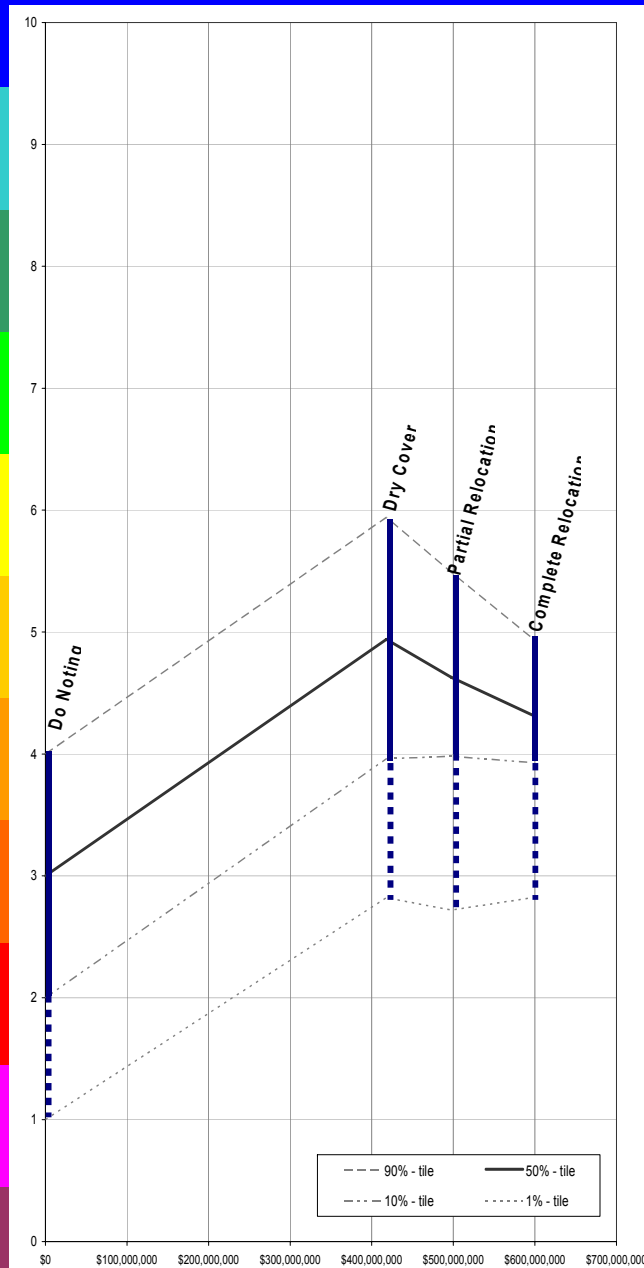


Traditional Land Use Scores

Short Term

Long Term

10	Ideal performance. No adverse impact to traditional land use. Site fully restored to natural state.
9	Very good performance. Some remaining aesthetic affects, but only insignificant and impacts on traditional land use. Necessary aquatic resources fully restored. Site allows hunting, trapping trails, trap lines essentially as existed prior to mine. Unimpeded access available at traditional trails.
8	Good performance. Some minor, localized impacts to traditional land use. Few people are effected and for only a limited amount of time.
7	Fair performance. Some moderate, highly localized, short-term limitations to traditional land use. Affects utilization of some, but not all traditional resources.
6	Mediocre performance. Some significant limitations over a small area on traditional land use remain. Between 5 and 7
5	Poor performance. Significant problems (e.g., reduction in habitat productivity) limit but do not eliminate uses essential for tradition. The impact is over a moderately sized area. Between scores of 4 and 6.
4	Very poor performance. Serious problems result in significant and persistent limitations on traditional land use over a relatively large area. Affects usage of many important traditional resources. Seriously adversely affects traditions for some peoples.
3	Bad performance. Very serious problems. Impacts large area. Between scores of 2 and 4.
2	Very bad performance. Major problems. Key traditional resources lost. Permanent and major limitations on traditional land use over a very large area. Affects usage of nearly all important traditional resources for many people. Traditions lost for many peoples.
1	Terrible performance. Critical problem. Between scores of 0 and 2.
0	Abominable performance. An disaster for traditional land use. Permanent loss of traditional land use opportunities over an extensive area and for nearly all people resulting in irreparable break with traditions.



# Preferred Option

- All options meet the objectives of the major stakeholders.
- Cost-benefit analysis reveals marginal, and in some cases, reduced benefit by spending an extra \$100M for the partial relocation and an extra \$200M for the full relocation of tailings over the stabilize the tailings in place option.

[info@faromine.ca](mailto:info@faromine.ca) | [www.faromine.ca](http://www.faromine.ca)

Pelly Crossing:  
867.537.3144

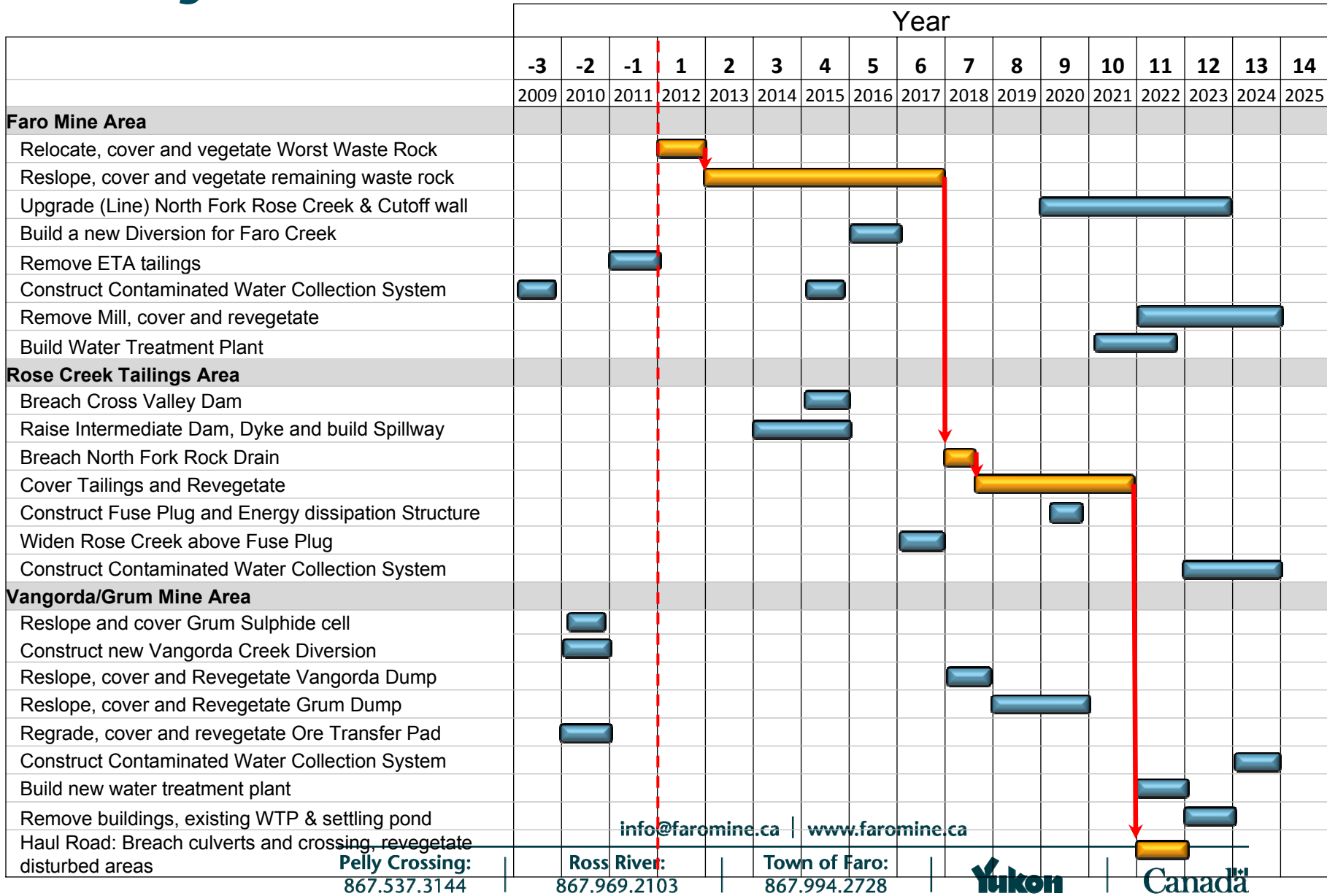
Ross River:  
867.969.2103

Town of Faro:  
867.994.2728

**Yukon**  
Government

Canada

# Project Schedule



info@faromine.ca | www.faromine.ca

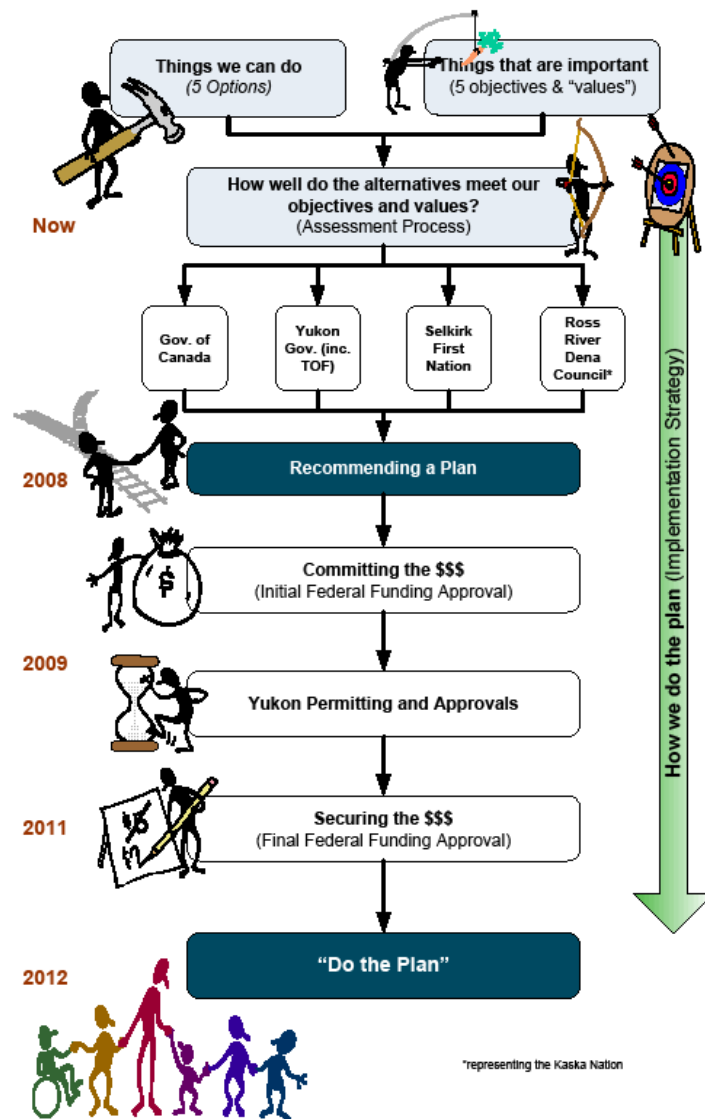
**Pelly Crossing:**  
867.537.3144

**Ross River:**  
867.969.2103

**Town of Faro:**  
867.994.2728



# Next Steps: Roadmap to Remediation



- The communities and governments are now conducting their own assessment processes.
- Information from these processes will be used by the project Oversight Committee to arrive at a final closure and remediation plan to recommend to the federal government for initial funding approval.



# Questions?

[info@faromine.ca](mailto:info@faromine.ca) | [www.faromine.ca](http://www.faromine.ca)

**Pelly Crossing:**  
867.537.3144

**Ross River:**  
867.969.2103

**Town of Faro:**  
867.994.2728

**Yukon**  
Government

**Canada**