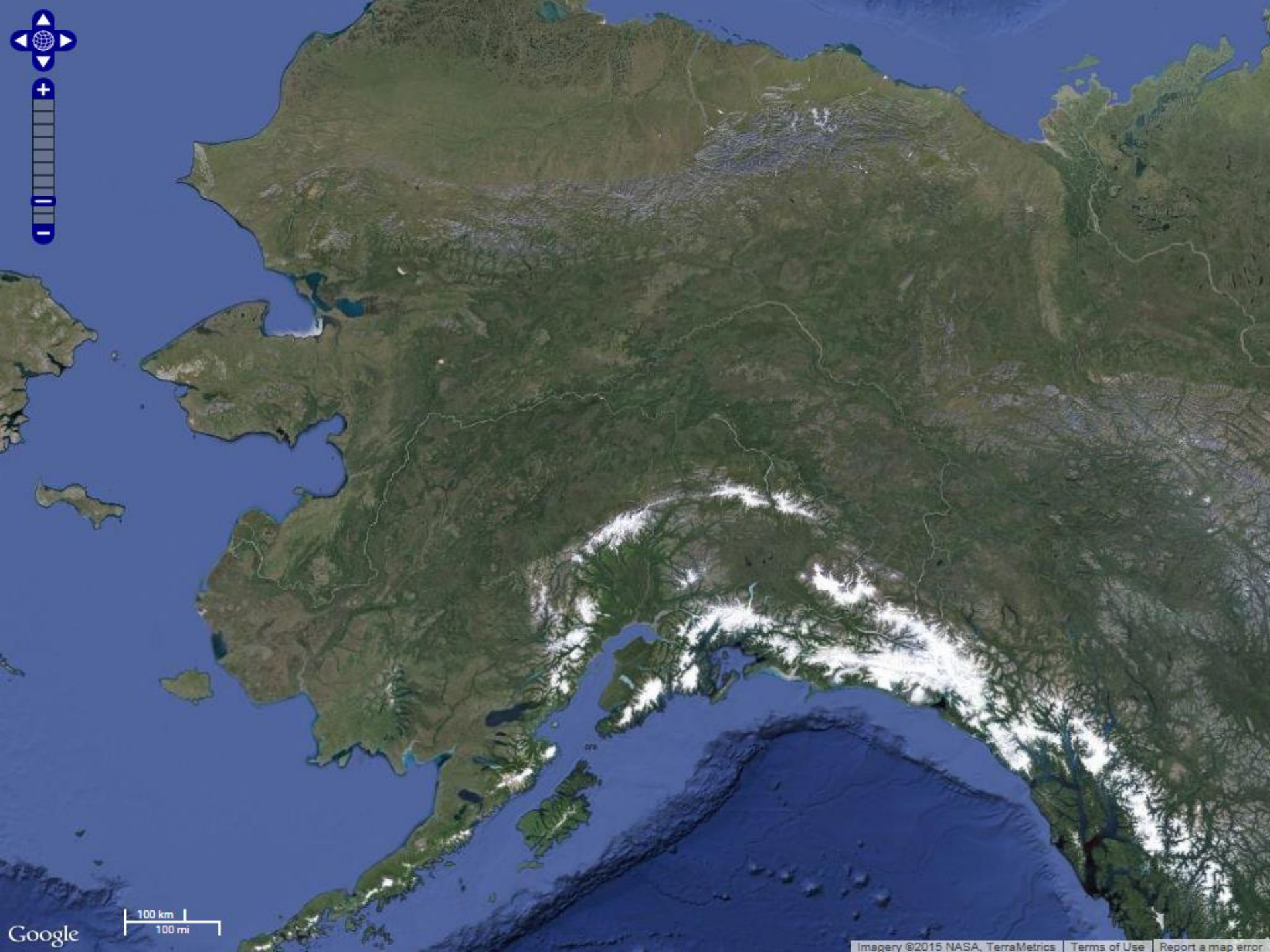


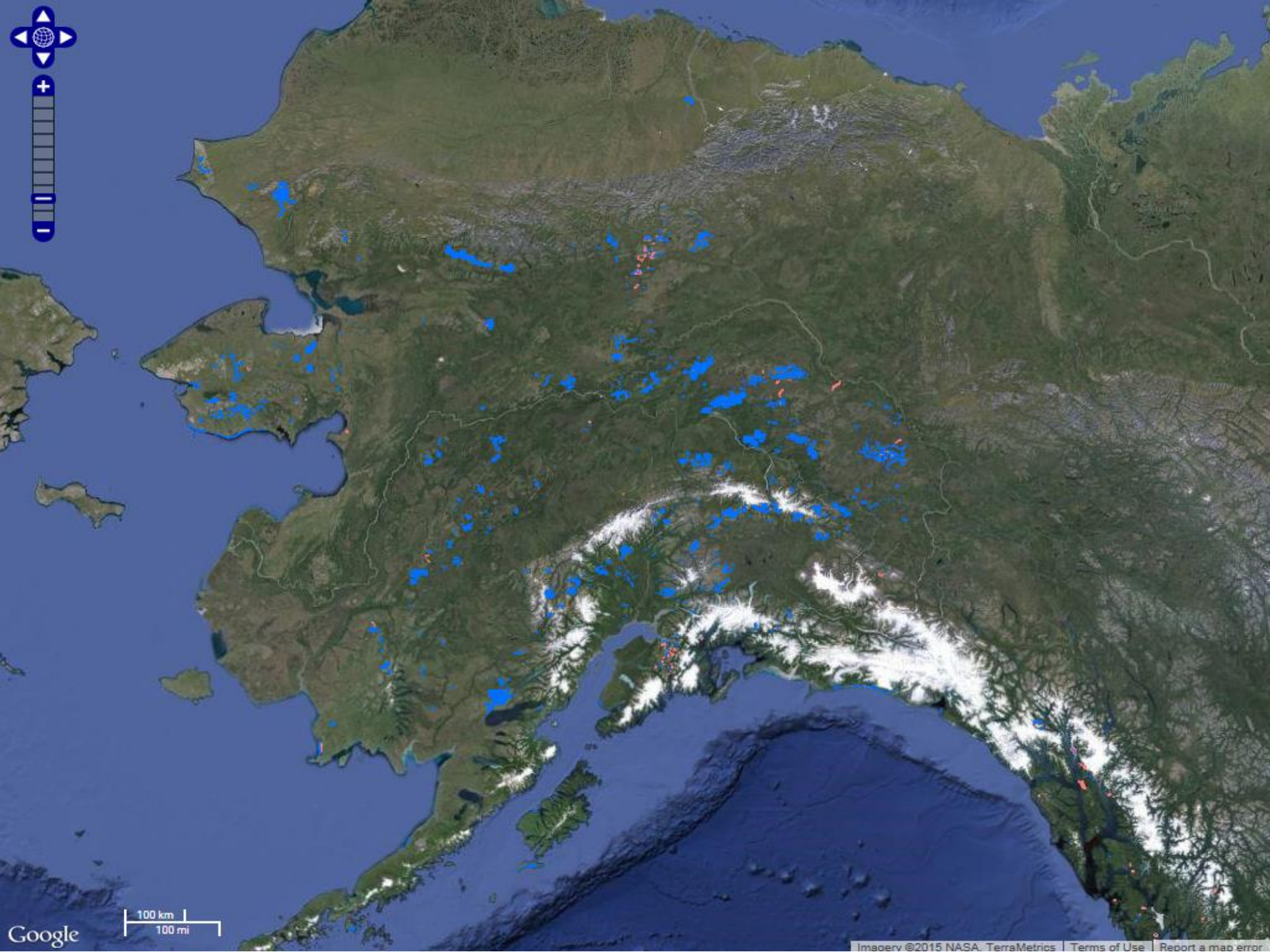
*Northern Latitudes Mining Reclamation
Workshop, Juneau, Alaska 2015*

UNIQUE CHALLENGES FACING ALASKAN MINES DURING DESIGN, OPERATIONS AND CLOSURE

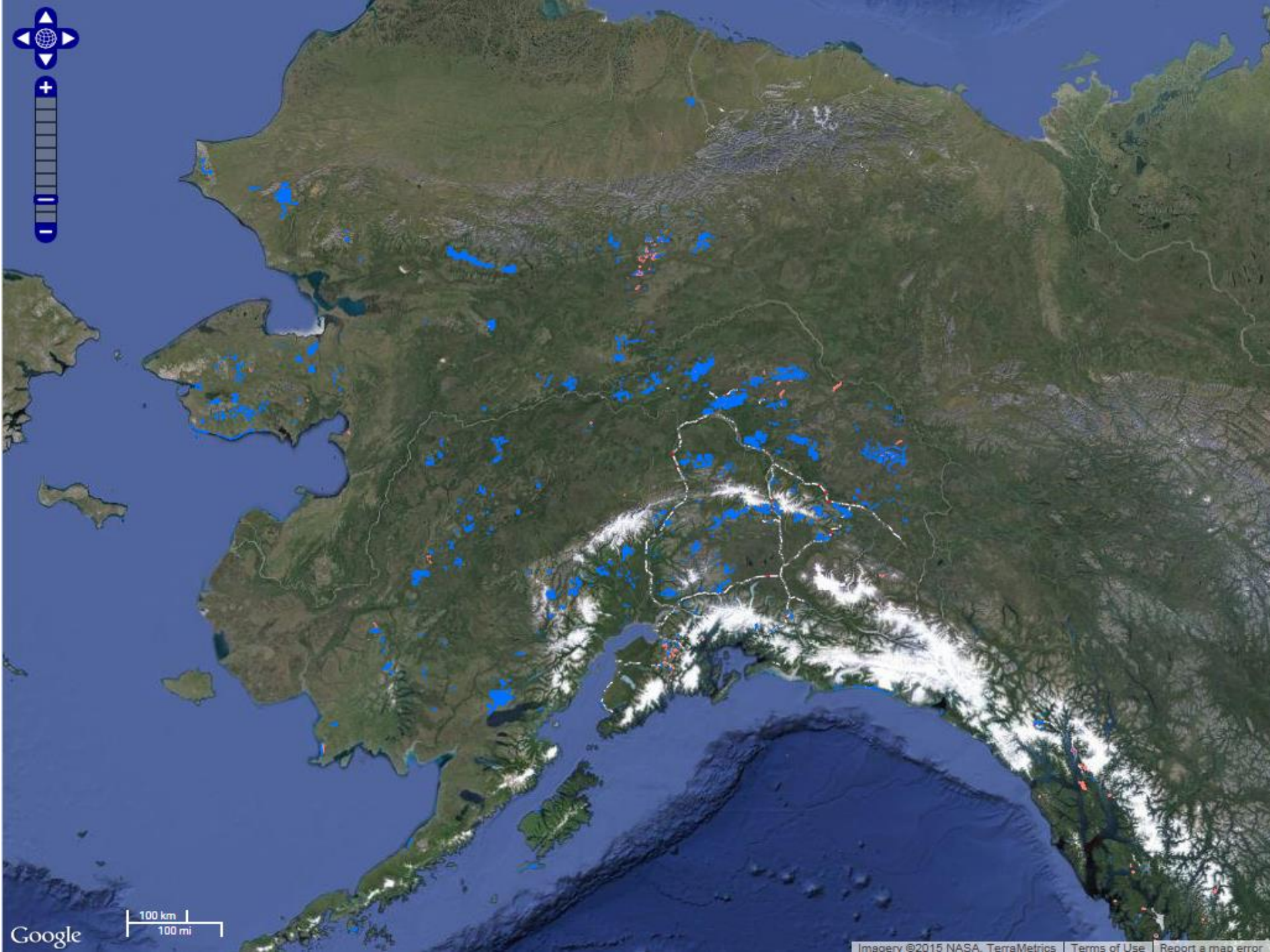






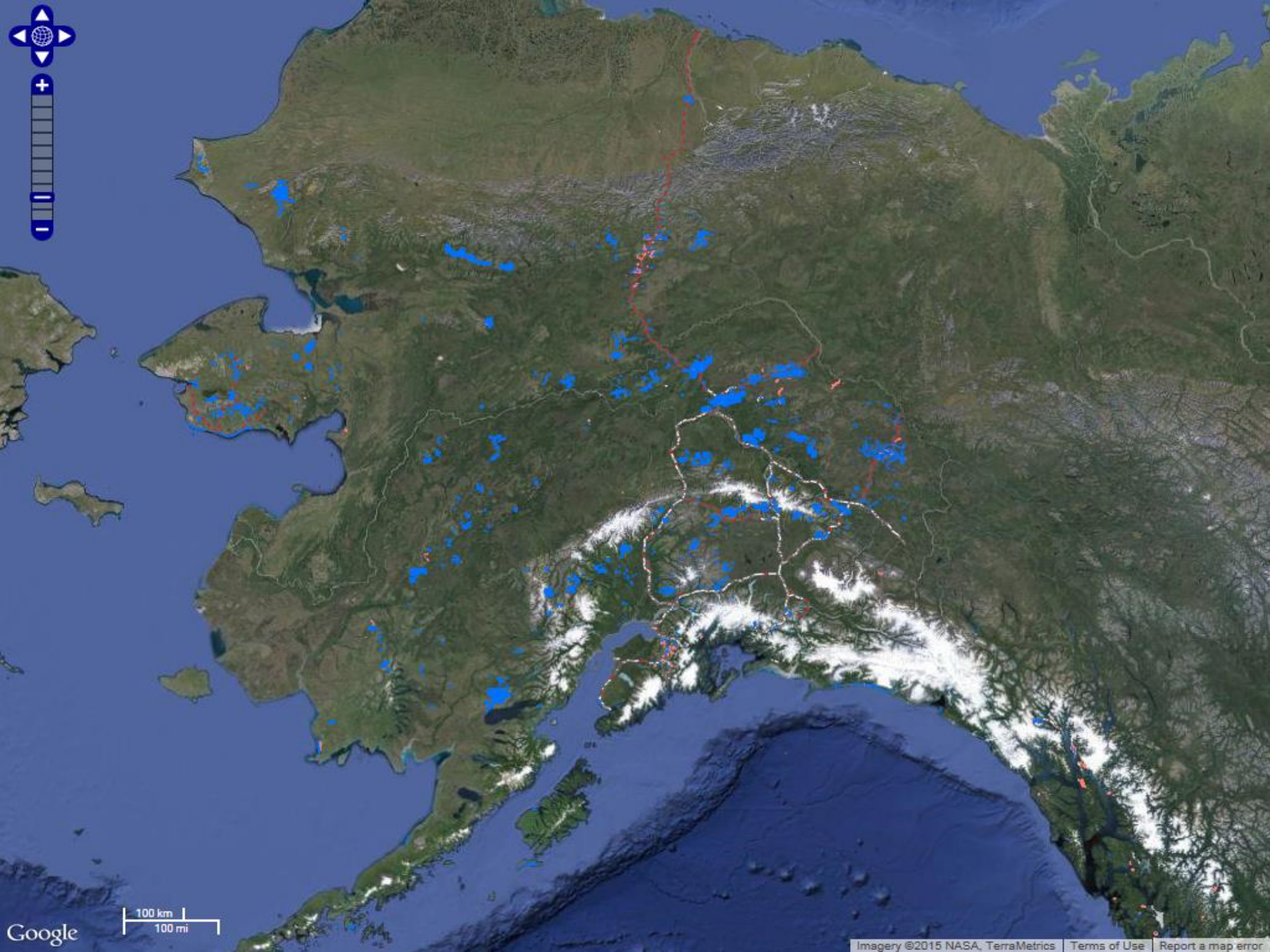


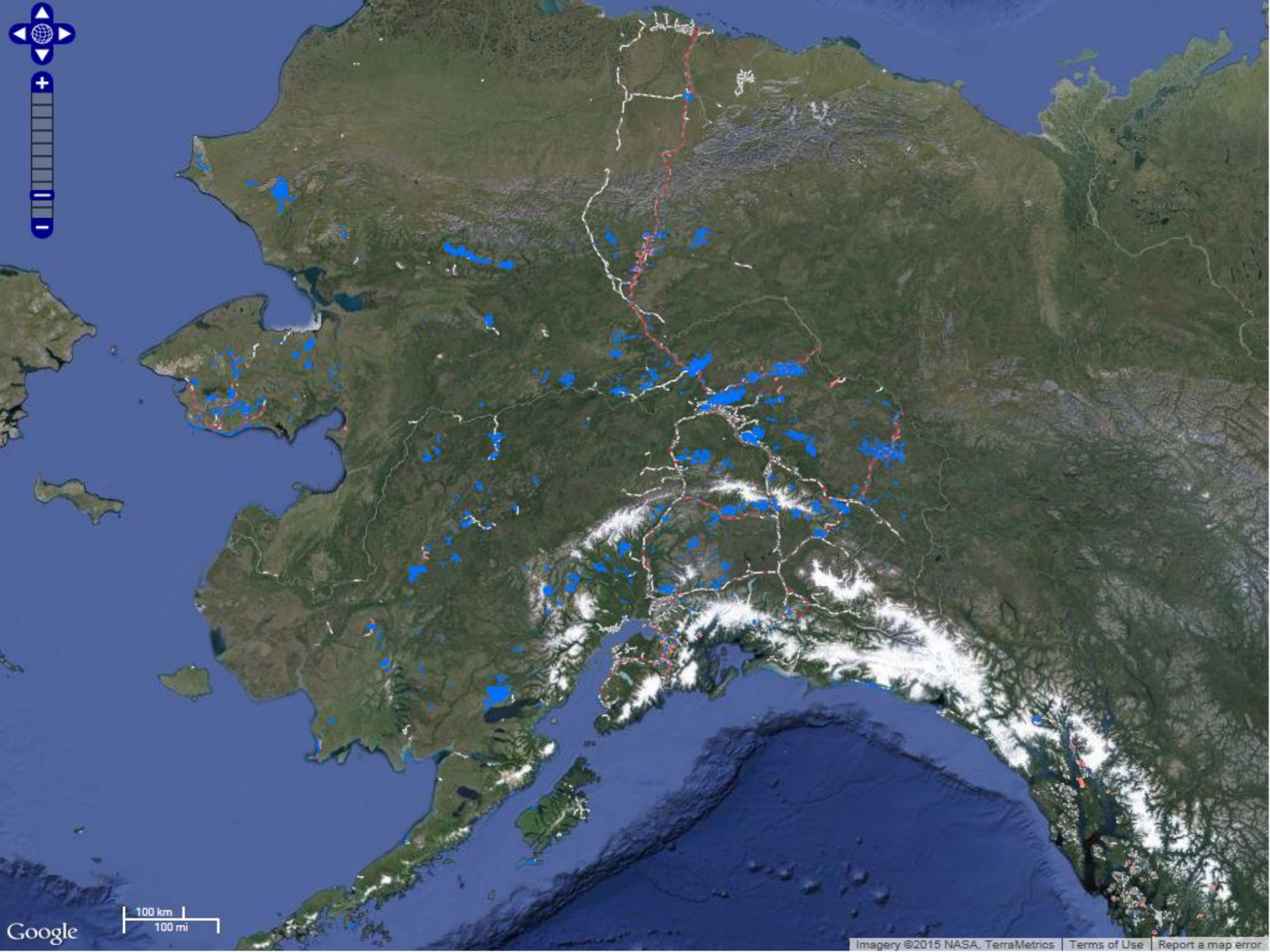
Google



100 km
100 mi

Google





100 km
100 mi

Google

Imagery ©2015 NASA, TerraMetrics | Terms of Use | Report a map error





Sky

Waste Rock

Original Ground

Sky



The diagram illustrates a cross-section of a waste rock mound. The top portion is a solid blue area labeled 'Sky'. Below it is a grey, irregularly shaped mound labeled 'Waste Rock'. The base of the mound is a solid green area labeled 'Original Ground'. The mound rises from the left, peaks in the center, and then descends to meet the original ground level on the right.

Waste Rock

Original Ground

Sky

Waste Rock

Original Ground





The diagram illustrates a cross-section of a landscape. The top portion is a solid blue area representing the sky. Below the sky is a grey, irregularly shaped mound labeled 'Waste Rock'. The base of the mound is a flat, grey horizontal line. Below this line is a solid green area representing the 'Original Ground'. The labels 'Sky', 'Waste Rock', and 'Original Ground' are written in white serif font within their respective colored regions.

Sky

Waste Rock

Original Ground

Sky

Waste Rock

Original Ground





Sky

Active Layer - Thaws in the summer, freezes during the winter

Permafrost - Permanently frozen year round

Thawed year round

Sky

Active Layer - Thaws in the summer, freezes during the winter

Permafrost - Permanently frozen year round

Thawed year round

A cross-sectional diagram of the ground layers. At the top is a blue sky. Below it is a yellow trapezoidal shape representing a mound of snow. Underneath the snow is a brown horizontal band representing the active layer. Below the active layer is a light blue area representing permafrost. At the bottom is a dark grey horizontal band representing a permanently thawed layer.

Sky

Active Layer - Thaws in the summer, freezes during the winter

Permafrost - Permanently frozen year round

Thawed year round

A cross-sectional diagram of the ground in a cold climate. The top layer is a blue sky. Below it is a yellow trapezoidal shape representing the active layer, which is thicker in the center and tapers towards the sides. Below the active layer is a light blue layer representing permafrost. At the bottom is a dark grey layer representing ground that is thawed year-round. The text labels are placed within their respective layers.

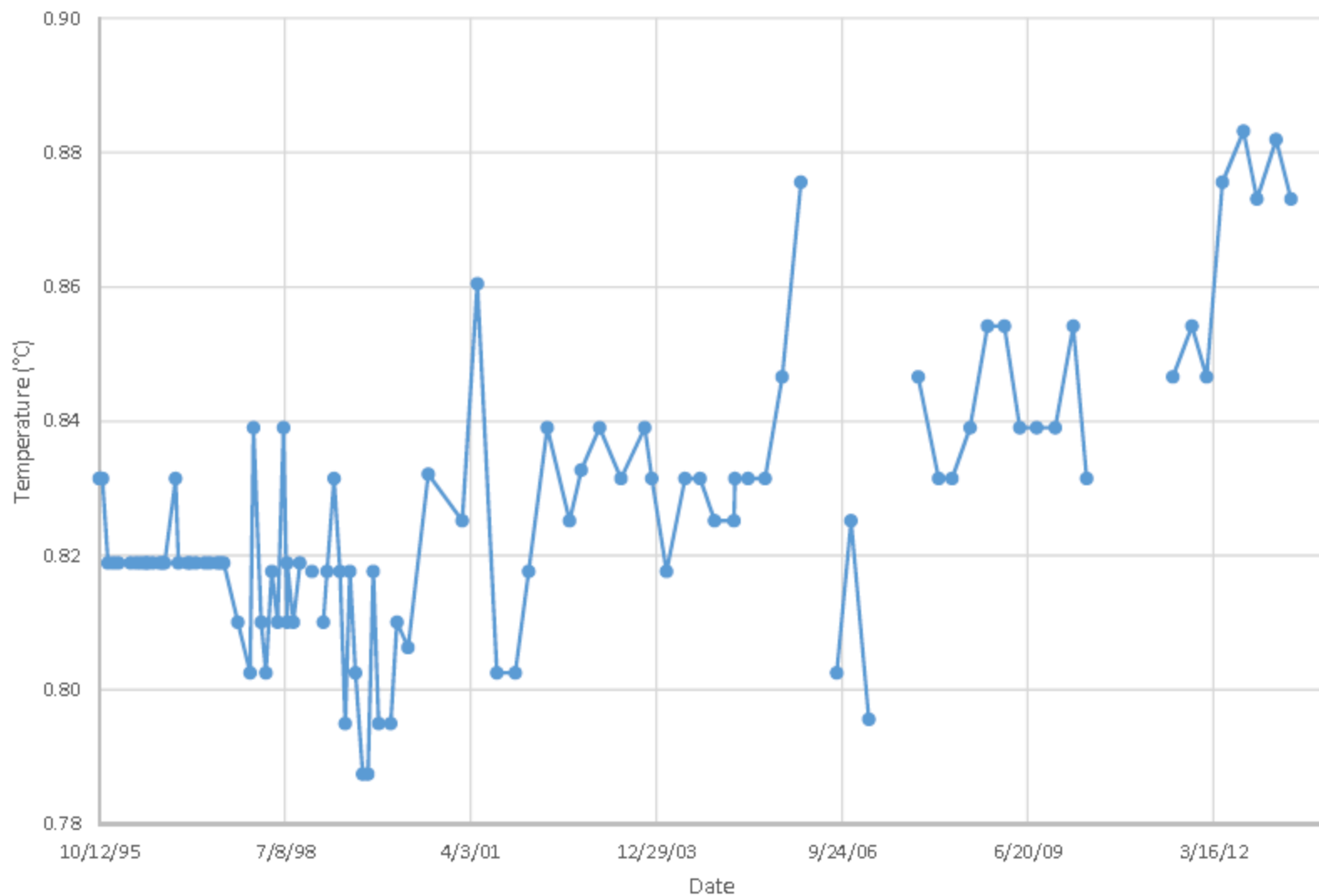
Sky

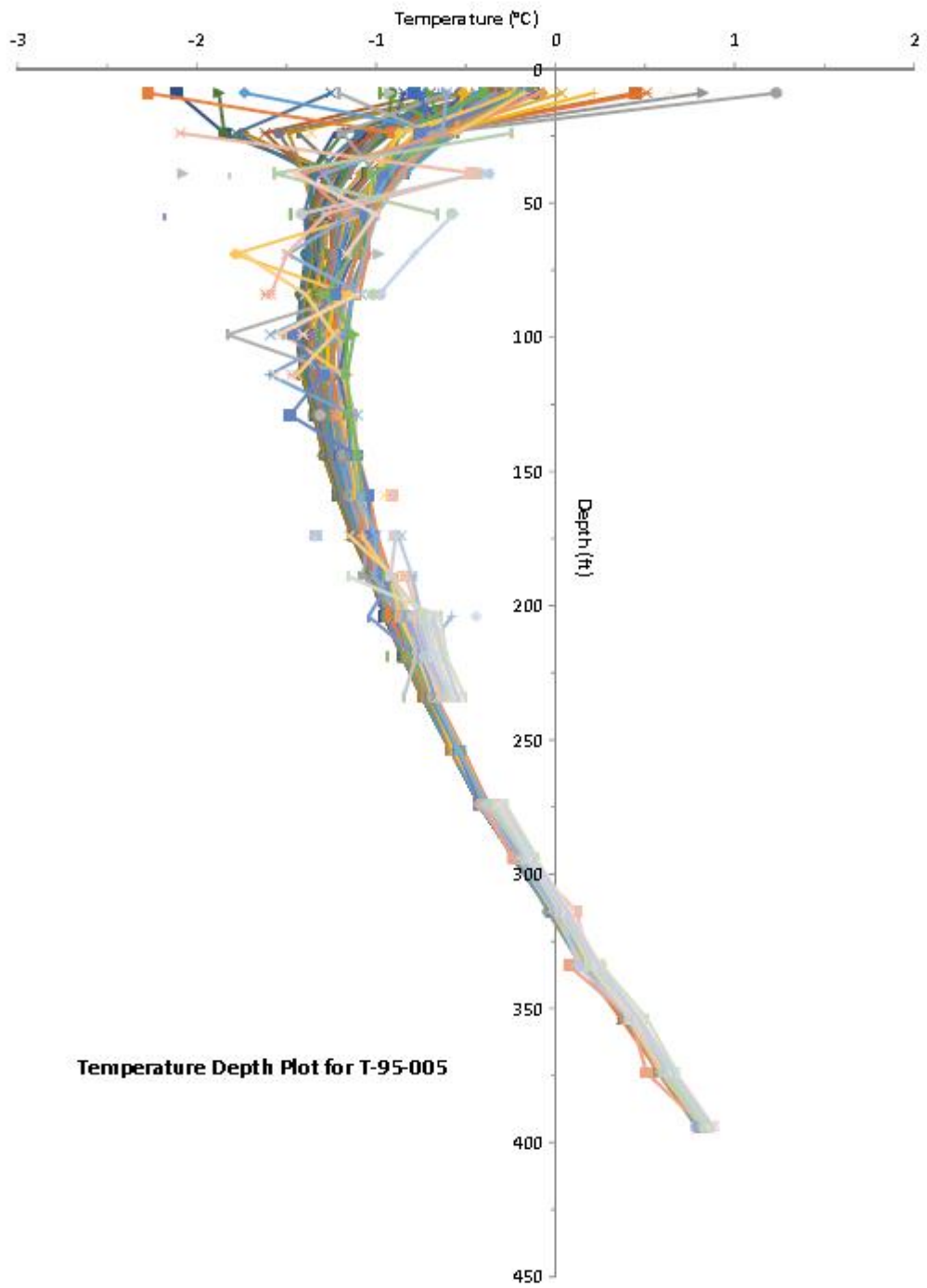
Active Layer - Thaws in the summer, freezes during the winter

Permafrost - Permanently frozen year round

Thawed year round

T-95-005: Temperature at 394 feet









A close-up photograph of a brown bear's face. The bear's mouth is open, revealing its sharp canine teeth and smaller incisors. The bear's fur is a rich brown color, and its eyes are dark. The background is a soft, out-of-focus green, suggesting a natural outdoor setting. Overlaid on the center of the bear's face is the word "Questions?" in a bold, white, sans-serif font.

Questions?