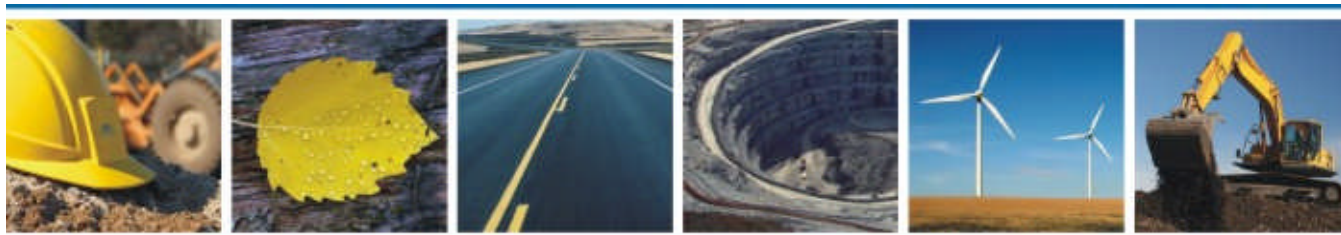


YUKON GOVERNMENT – YUKON ENERGY, MINES & RESOURCES
ASSESSMENT & ABANDONED MINES, ROOM 2C, 2ND FLOOR, ROYAL CENTER
P.O. BOX 2703, WHITEHORSE, YUKON Y1A 2C6

HAZARDOUS MATERIALS CLASSIFICATION FARO MINESITE YUKON



REPORT

DECEMBER 2011
ISSUED FOR USE
EBA FILE: W23101482

creating & delivering | BETTER SOLUTIONS


A TETRA TECH COMPANY

LIMITATIONS OF REPORT

This report and its contents are intended for the sole use of Yukon Government - Yukon Energy Mines and Resources Assessment and Abandoned Mines and their agents. EBA Engineering Consultants Ltd. operating as EBA, A Tetra Tech Company, does not accept any responsibility for the accuracy of any of the data, the analysis, or the recommendations contained or referenced in the report when the report is used or relied upon by any Party other than Yukon Government - Yukon Energy Mines and Resources Assessment and Abandoned Mines, or for any Project other than the proposed development at the subject site. Any such unauthorized use of this report is at the sole risk of the user. Use of this report is subject to the terms and conditions stated in EBA's Services Agreement. EBA's General Conditions are provided in Appendix A of this report.

EXECUTIVE SUMMARY

EBA Engineering Consultants Ltd. operating as EBA, A Tetra Tech Company (EBA) was retained by Government of Yukon, Assessment of Abandoned Mines (AAM) division to provide environmental services at the Faro Mine Site (the Property) for classification of regulated materials deemed as hazardous and requiring regulated disposal.

EBA representatives Mr. Shane Dooley and Mr. Chris Harwood completed the site assessment and sampling October 24 - 28, 2011.

The assessment included an intrusive (destructive) assessment to identify the potential presence of asbestos containing materials (ACMs) and lead based paints (LBPs) and a visual assessment for the presence of poly chlorinated biphenyls (PCBs), ozone depleting substances (ODS) and mercury containing equipment. The assessment also included the sampling of select fluids that were not easily identifiable or labeled on the Property.

The results of the assessment are provided as follows.

- Asbestos containing drywall joint compound throughout the second floor of the Warehouse. The ACM was in good to fair condition at the time of assessment;
- Asbestos containing mudded pipe insulation on the second floor of the Warehouse. The ACM was in good to fair condition at the time of assessment;
- Asbestos containing 12"x12" beige vinyl floor tile located throughout the second floor of the Warehouse. The ACM was in good to fair condition at the time of assessment;
- Asbestos containing transite cement board located in the former lab on the second floor of the Warehouse was labeled as asbestos containing. The ACM was in good condition at the time of assessment;
- Asbestos containing drywall joint compound in the office area accessed from the former assay lab in the Mill. The ACM was in fair condition at the time of assessment;
- Asbestos containing mudded pipe insulation was identified throughout the mill. The ACM was in good to poor condition at the time of assessment;
- Asbestos containing pump packaging used as a machine gasket was identified within the Maintenance room of the Mill. The ACM was in good condition at the time of assessment;
- Asbestos containing transite cement piping used as rain water leaders were identified throughout the Mill. The ACM was in good condition at the time of assessment;
- Asbestos containing transite cement boards used within electrical components were identified throughout the Mill. The ACM was in good condition at the time of assessment; and,
- Asbestos containing 12"x12" beige vinyl floor tiles were identified within the Guard House. The ACM was in good condition at the time of assessment.

EBA identified eleven lead based paint coatings and five that require regulated disposal:

- Blue lead based paint applied to the interior walls of the Warehouse building, requiring non-regulated disposal. This paint was visually identified within multiple areas of the Warehouse and was observed to be in poor condition at the time of assessment;
- Silver lead based paint applied to the interior walls of the Warehouse building, requiring non-regulated disposal. This paint was visually identified within multiple areas of the Warehouse and was observed to be in fair to poor condition at the time of assessment;
- Red lead based paint applied to the drive-through overhead doors of the Warehouse building, requiring regulated disposal. This paint was visually identified on most overhead doors within the Warehouse and was observed to be in fair to poor condition at the time of assessment;
- Yellow lead based paint applied to the interior walls of the former welding room of the Warehouse requiring regulated disposal. This paint was only identified within the Warehouse and was in fair to poor condition at the time of assessment;
- Blue lead based paint applied to walls of the mezzanine lunchroom within the Warehouse, requiring non-regulated disposal. This paint was visually identified in multiple areas within the Warehouse and was in good to fair condition at the time of assessment;
- Beige lead based paint applied to walls of the mezzanine lunchroom within the Warehouse, requiring non-regulated disposal. This paint was visually identified in multiple areas within the Warehouse especially in the second floor office area and was in good to fair condition at the time of assessment;
- Grey lead based paint applied to the walls of the welding shop in the Warehouse welding room, requiring regulated disposal. This paint was visually identified in additional areas of the Warehouse and was in fair condition at the time of assessment;
- White interior lead based paint applied to the walls of the second floor offices in the Warehouse, requiring non-regulated disposal. This paint was visually identified within multiple offices of the Warehouse and was in good to fair condition at the time of assessment;
- Green interior lead based paint applied to the walls of the small drive-through warehouse, requiring regulated disposal. This paint was only identified within this location and was in poor condition at the time of assessment;
- Blue lead based paint applied to the walls of the Storage area within the Mill, requiring regulated disposal. This paint was visually identified in multiple areas within the Mill and was in fair to poor condition at the time of assessment;
- Beige interior lead based paint applied to the walls of the second level office area of the Mill, requiring non-regulated disposal. This paint was visually identified on multiple offices within the Mill and was in good to fair condition at the time of assessment; and,
- Based on the construction date of the buildings and associated plumbing components, EBA suspects that solder associated with the domestic water supply piping (hot and cold water) within the buildings may also be lead based where copper piping was used.

EBA identified the following other hazardous/regulated materials at the Property:

- Fluorescent lamp ballast “General Electric 16A240N and 17A240T” suspect of containing PCB’s was identified within numerous buildings;
- Twenty pound tank labeled freon 22 located in the control room of the Mill;
- One freezer located in the former lab on the second floor of the Warehouse Building containing an unknown quantity of refrigerant;
- Fire extinguishers were located throughout the Property but EBA understands that they belong to the mine manager, Denison Environmental;
- Refrigerators and freezers were located within the Guardhouse containing unknown quantities of refrigerant;
- Wall mounted mercury containing switches, within the office and lab areas of the Mill, totaling approximately 18;
- Wall mounted mercury containing switches within the Warehouse totaling approximately five;
- Wall mounted mercury containing switches within the Guard shack totaling approximately three; and,
- Estimated 1000 fluorescent lamp tubes containing a small amount of mercury vapor located throughout the buildings located on the Property.

EBA identified the following hydrocarbon fluids in various locations onsite: 450 L plus 3 x 55 kg drums of industrial grease, 80 L mineral insulating oil, 20 L compressor oil, 540 L heavy duty motor oil, 1,800 L transmission fluid, 235 L gasoline, 180 L motor oil, hydraulic fluid, waste oil, and numerous ASTs containing diesel and waste oil.

EBA identified the following chemicals on the Property: caustic soda pearls, nitrogen phosphorous and potash, aerophine holding tank, percol holding tank, percol pellets, uniden M-60 (filter acid) holding tank, methyl isobutyl carbinol holding tank, dow frothers holding tank, cyanide solution holding tank, Potassium isobutyl xanthate holding tank, sodium sulphate holding tank, carbon granules, liquid pH 4 solution, pentahydrate sodium metasilicate, cylinders of cyanide calibration canisters, industrial x-ray tubes containing an unknown quantity of beryllium, methyl isobutyl carbinol, cyanide carbide, toluene and a silver colored trailer tank containing glycol based solution.

A complete summary for materials identified on the Property is included within the Tables and Section 5 of this report. Recommendations are provided in Section 6 of this report.

TABLE OF CONTENTS

EXECUTIVE SUMMARY	i
1.0 INTRODUCTION	1
2.0 BACKGROUND INFORMATION AND SCOPE OF SERVICES	1
2.1 Background Information.....	1
2.2 Scope of Services	1
3.0 REGULATIONS AND GUIDELINES	2
3.1 Federal Occupational Health and Safety Regulations.....	2
3.2 Territorial Occupational Health and Safety Regulations	3
3.3 Asbestos Containing Material Regulations	3
3.4 Lead Regulations	3
3.4.1 Lead Soldering	4
3.5 Ozone Depleting Substances Regulations	4
3.6 Polychlorinated Biphenyl Regulations	4
3.7 Environmental Regulations.....	5
3.8 Transportation Regulations.....	5
4.0 METHODOLOGY	5
4.1 Asbestos-Containing Materials	5
4.2 Lead-Based Paint	6
4.3 Ozone Depleting Substances, Mercury and Polychlorinated Biphenyls.....	6
4.4 Drum Sampling	6
4.5 Personal Protective Equipment	7
5.0 ASSESSMENT RESULTS	7
5.1 Building Assessment	8
5.2 Asbestos-Containing Materials	10
5.2.1 Warehouse Building.....	10
5.2.2 Mill Building.....	11
5.2.3 Guard House	13
5.3 Lead Based Paints.....	13
5.4 Lead Piping and Components	14
5.5 Polychlorinated Biphenyls.....	15
5.5.1 Polychlorinated Biphenyls in Transformers	15
5.6 Ozone Depleting Substances	15
5.7 Elemental Mercury	16
5.8 Drum Sampling	16
5.9 Hydrocarbons.....	16
5.10 Chemical Inventory	17
5.11 Batteries	18

5.12	Miscellaneous Debris and Materials	18
5.13	Water Ingress.....	19
6.0	RECOMMENDATIONS	19
6.1	Asbestos Containing Materials	19
6.2	Lead Based Paint	20
6.3	Lead Solder.....	20
6.4	Polychlorinated Biphenyls.....	20
6.5	Ozone Depleting Substances	20
6.6	Mercury Containing Equipment	20
6.7	Drum Contents.....	21
6.8	Chemicals	21
7.0	LIMITATIONS OF REPORT	21
8.0	CLOSURE.....	22

TABLES

Table 1	Asbestos Containing Materials – Warehouse
Table 2	Asbestos Containing Materials – Mill
Table 3	Asbestos Containing Materials – Guard House
Table 4	Asbestos Containing Material Samples
Table 5	Lead Based Paint Samples
Table 6	Hydrocarbon Inventory
Table 7	Chemical Inventory
Table 8	Miscellaneous Inventory

FIGURES

Figure 1	Site Plan; Mill Area
Figure 2	Warehouse – First Floor
Figure 3	Warehouse – Second Floor
Figure 4	Reagents Building
Figure 5	Millwright Building
Figure 6	Warehouse – Drive Thru
Figure 7	Guardhouse – First Floor
Figure 8	Guardhouse – Second Floor
Figure 9	Lunch/Millwright rooms - Mill
Figure 10	Upper Office Area – Mill
Figure 11	Assay Lab Area - Mill
Figure 12	Control Area - Mill
Figure 13	Methyl Isobutyl Carbinol Storage
Figure 14	Northwest Dump
Figure 15	Scrap Metal Laydown Yard

APPENDICES

- Appendix A EBA General Conditions
- Appendix B Photographic Documentation
- Appendix C Asbestos Containing Materials (Analytical Certificates)
- Appendix D Lead Based Paint and PCB (Analytical Certificates)

1.0 INTRODUCTION

EBA Engineering Consultants Ltd. operating as EBA, A Tetra Tech Company (EBA) was retained by Government of Yukon, Assessment of Abandoned Mines (AAM) division to provide environmental services at the Faro Mine Site (the Property) for classification of regulated materials deemed as hazardous and requiring regulated disposal.

EBA representatives Mr. Shane Dooley and Mr. Chris Harwood completed the site assessment and sampling October 24 - 28, 2011.

This document provides an outline of:

- Applicable regulations;
- Background information regarding the purpose of the assessment;
- EBA scope of services;
- Methodology;
- Findings of our assessment; and,
- Based on our findings, provides appropriate recommendations.

2.0 BACKGROUND INFORMATION AND SCOPE OF SERVICES

2.1 Background Information

The Property is located approximately 25 km north west of Faro, YT. The mine was explored predominately for lead and zinc with operations from circa 1960 up to 1998. Through that time, the ownership of the mine was Anvil Range Mining Corporation until 1998 when the company sought protection under the *Companies' Creditors Arrangement Act* (CCAA) and was placed into receivership.

EBA representatives Mr. Shane Dooley and Mr. Donald Wilson completed a walkthrough of the Property on September 14 - 15, 2011 to determine a detailed work plan for inclusion within the proposal for the completion of the services outlined below.

2.2 Scope of Services

EBA's scope of services included the following;

- Preliminary site visit completed in September, 2011;
 - Assessment of structural integrity of buildings for obvious signs of degradation;
 - Completion of a site specific health and safety plan; and,
 - Sampling plan and list of required resources for sampling materials identified onsite.

- Assessment of all accessible areas of the buildings on the Property for the collection of the following suspect building materials:
 - Asbestos containing materials (ACM's); and
 - Lead based paints (LBP's).
- Visual assessment for items listed as “hazardous waste” within the Yukon Hazardous Waste Regulation or the Federal Hazardous Waste Regulations as follows:
 - Ozone depleting substances (ODS);
 - Polychlorinated biphenyl's (PCB's); and,
 - Mercury containing equipment.
- Sample collection of suspected ACMs and LBPs for laboratory analysis;
- Sample collection of chemicals and process reagents within containers or drums not labeled or where the contents were not easily identifiable;
- Sample collection of PCB-contaminated oil within transformers that were locked-out and where labels did not identify PCB content;
- Submission of collected samples for laboratory analysis;
- Interpretation of analytical data;
- Visual confirmation for mold or moisture impacted building materials;
- Inventory of labeled chemicals and reagents located on the Property with locations outlined on figures;
- Figures outlining sample point locations; and,
- Preparation of a final report, detailing the findings of our assessment outlining hazardous materials identified within the Property.

3.0 REGULATIONS AND GUIDELINES

The following sub-sections outline relevant territorial and federal regulations and guidelines as they pertain to hazardous building materials.

3.1 Federal Occupational Health and Safety Regulations

Within federal jurisdictions Occupational Health and Safety is regulated by Human Resources Skills Development Canada (HRSDC), under the Canada Labor Code, Part II – Occupational Health and Safety (Canada Labor Code). The Canada Labor Code defines the general duties and obligations of the employer, employees and others at federally regulated workplaces.

3.2 Territorial Occupational Health and Safety Regulations

Territorial workplace health and safety is regulated in Yukon Territory by Yukon Workers Compensation Health and Safety Board under the Occupational Health and Safety Act (the Act), as amended up to 2002. The Act defines the general duties and obligations of the employer, employees and others at the workplace.

The Yukon Territory Occupational Health and Safety Regulation 2006 (OH&S Reg) (including amendments up to the date of this report) contains legal requirements that must be met by all workplaces under the inspection jurisdiction of Yukon Workers Compensation Health and Safety Board. Many parts of the OH&S Regulation have associated guidelines, which are used to help interpret and apply the OH&S Regulation.

Section 10.56 of the OH&S Regs identifies that a competent person must review the structure for the presence of hazardous materials that require special handling prior to demolition.

3.3 Asbestos Containing Material Regulations

The handling and management of asbestos containing materials are regulated by the Act under Section 33 of the OH&S Reg.

Within Section 33, basic information is outlined on asbestos and asbestos products, health hazard requirements for worker protection, safe work procedures and principles that should be followed in selecting the most suitable technique for the safe abatement of ACMs.

Under the Transportation of Dangerous Goods Act, Asbestos is classified under Class 9; Miscellaneous Products, Substances or Organisms.

3.4 Lead Regulations

In 1976, the lead content in certain interior and exterior paint was limited to 0.5% by weight (5,000 parts per million (ppm)) under the federal Hazardous Products Act. In April 2005, the Governor General in Council, on the recommendation of the Minister of Health, and pursuant to Section 5 of the Hazardous Products Act, annexed the Surface Coating Materials Regulation 2005-109 and the previous acceptable level of lead in paint was amended from 0.5% by weight to 600 mg/kg (600 ppm).

In October 2010, further corrective action was taken on consumer paints that contain more lead than is allowed by law and the Government amended the Surface Coating Materials Regulations to include “Consumer Products Containing Lead (Contact with Mouth) and Surface Coating Materials Regulation.” The amended Surface Coating Materials Regulation identifies that previously considered “safe” lead levels pose a significant risk to the public, especially to children and pregnant women, and significantly lowered the level of total lead allowed in paints and other surface coating materials from 600 mg/kg to 90 mg/kg - which is equivalent to a total lead concentration of 0.009%. This new lead limit is among the most stringent in the world.

Under the Hazardous Products Act, identified LBP must undergo Toxicity Characteristic Leachate Properties (TCLP) to determine disposal procedures. The acceptable TCLP limit for disposal of LBP is less than 5 mg/L (5 ppm). If an identified LBP exhibits a TCLP result of less than 5 ppm, the paint is not considered a hazardous material and may be disposed as construction waste.

Under the Transportation of Dangerous Goods Act, lead in sheeting products is under Class 9; Miscellaneous Products, Substances or Organisms.

3.4.1 Lead Soldering

The National Plumbing Code (NPC) allowed lead as an acceptable material for pipes until 1975. In 1986, the American Society of Engineers (ASME)/Canadian Standards Association (CSA) standard ASME 112.18.1/CSA B125.1 for plumbing supply fittings also limited the standard of lead content of solder to 0.2%. The NPC officially prohibited the use of lead solder in new plumbing or in repairs to plumbing for drinking water supplies in 1990.

3.5 Ozone Depleting Substances Regulations

The Yukon passed ODS Regulations in 1996; to control and minimize the release of damaging ODS into the atmosphere. The regulations govern the recovery, recycling and disposal of ODS in the Yukon. They regulate ODS use in:

- Refrigeration and air conditioning equipment;
- Motor vehicle air conditioners;
- Fire extinguishing equipment; and,
- Solvents and sterilizing processes.

Yukon ODS Regulations were amended in 2000 to implement changes in the National Action Plan for Environmental Control of ODS and Their Halocarbon Alternatives (NAP). The NAP outlines how the control, reduction and elimination of ODS and halocarbon alternative emissions can be met. It addresses the ultimate management, control, phase-out and disposal of all ODS in Canada and sets agreed objectives and tasks for harmonized provincial actions.

In 1994, the federal government filed the Ozone-Depleting Substances Regulations to amend controls on the production and consumption of chlorofluorocarbons (CFCs), halons, tetrachloride and methyl chloroform. The Federal Halocarbon Regulations, effective July 1, 1999, was filed to ensure uniformity with respect to the release, recovery and recycling of ODSs and their halocarbon alternatives in refrigeration and air conditioning equipment throughout the provinces of Canada. The Code of Practice for the Reduction of CFC Emissions from Refrigeration and Air Conditioning Systems (EPS/1/RA/1 March 1991, original date) provides Best Practice recommendations for the handling, storage, and disposal of such materials.

Under the Transportation of Dangerous Goods Act, Ozone Depleting Substances are under Class 2; Non-flammable Gas.

3.6 Polychlorinated Biphenyl Regulations

The manufacture and import of PCBs was banned in North America in 1977. The handling, storage and disposal of PCBs that were in use at the time of the ban, is strictly regulated by the federal government under the Canadian Environmental Protection Act (CEPA).

In 2008, Environment Canada introduced new PCB Regulations which seek to phase out the use and storage of PCBs, and to eliminate remaining PCB-containing electrical equipment by the end of 2025.

Under the Transportation of Dangerous Goods Act, polychlorinated biphenyl's are under Class 9; Miscellaneous Products, Substances or Organisms.

3.7 Environmental Regulations

In Yukon Territory, environmental matters pertaining to special or hazardous waste generally fall under the jurisdiction of Yukon Environment, pursuant to the Yukon Environment Act (YEA). The Special Waste Regulation (O.I.C. 1995/047) under the YEA refers to the handling, storage, transportation, treatment, recycling and disposal of special (hazardous) wastes in the territory. The regulation outlines regulated materials and criteria to be used to characterize waste as special waste.

The federal HWR refers to the handling, storage, transportation, treatment, recycling and disposal of hazardous wastes in the territory. The regulation outlines the materials and criteria to be used to characterize waste as hazardous.

The federal HWR defines waste asbestos as a waste containing friable asbestos fibres or asbestos dust in a concentration greater than 1% by weight either at the time of manufacture, or as determined using a method specified in section 40 (1).¹

3.8 Transportation Regulations

The transportation of special or hazardous wastes is governed (inter-territorial) under the Federal *Transportation of Dangerous Goods Act* (1992) and *Transport of Dangerous Goods Regulations* that outline the requirements for storage, handling, and transportation of such waste. In Yukon, the Federal TDG regulations are adopted by the Dangerous Goods Transportation Act.

4.0 METHODOLOGY

The assessment included an intrusive (destructive) assessment to identify the potential presence of ACMs and LBPs and a visual assessment for the presence of PCBs, ODS and mercury containing equipment. Fluids on the Property were attempted to be sampled when they were not easily identifiable or labeled.

4.1 Asbestos-Containing Materials

EBA assessed suspect ACMs systematically. Suspected asbestos-containing building materials were assessed through intrusive (destructive) sample collection procedures. EBA collected and analyzed suspect ACM samples for asbestos type and percentage content under Polarized Light Microscopy using dispersion

¹ 40 (1) For the purposes of the definition of "waste asbestos" in section 1 (1) of this regulation, if the concentration of asbestos in the waste is not determined by weight at the time of manufacture, it must be determined using one of the following:
(a) Method 600-R-93-116, as amended from time to time, published by the United States Environmental Protection Agency;
(b) NIOSH Method 9002, as amended from time to time, from the *NIOSH Manual of Analytical Methods*, 4th Edition, published by the National Institute for Occupational Safety and Health, United States.

staining in accordance with NIOSH 9002 methodologies. Samples collected were submitted to Wes-Har Asbestos Analysis and Consulting of Richmond, British Columbia, for analysis.

Through our assessment, EBA determined the type and extent of visually accessible suspected ACMs within the Property. Building systems that are reviewed as part of the assessment are provided as follows:

- Structural – including fireproofing on beams, open and solid webbed joist systems, Q-deck;
- Mechanical – including hot water and steam system, condensate system, chilled water system, glycol system, domestic hot and cold water, emergency generator exhaust, boiler units, heat exchangers, re-boiler units, asbestos cement piping, wall joint compound, asbestos sheet products, heating ventilation and air conditioning (HVAC); and
- Architectural – including: texture coats, sheet flooring, vinyl floor tile, acoustical spray-applied materials, condensation control applications, ceiling tile, wall board, drywall joint compound, asbestos sheet products.

4.2 Lead-Based Paint

An assessment of painted surfaces suspect of containing lead was conducted at the Property. Suspect LBP samples were analyzed for lead content in accordance with the requirements of the Environmental Protection Agency (EPA) analytical method 200.8 – Elements by ICP. Suspect LBP samples were submitted to ALS Environmental Laboratory in Whitehorse, YT for analysis. Suspected LBPs were assessed for potential health and safety risks based on their observed physical condition.

As outlined under the *Hazardous Products Act*, identified LBP underwent Toxicity Characteristic Leachate Properties (TCLP) to determine disposal procedures. The acceptable TCLP limit for disposal of LBP is less than 5 ppm. If an identified LBP exhibits a TCLP result of less than 5 ppm, the paint is not considered a hazardous material and may be disposed as construction waste.

4.3 Ozone Depleting Substances, Mercury and Polychlorinated Biphenyls

During the assessment, the Property was visually reviewed for the potential presence of ODS, elemental mercury and PCBs. These materials were assessed for potential health and safety risks based on their observed physical condition.

4.4 Drum Sampling

EBA assessed drum contents for classification of materials to aid in the identification for disposal. Prior to attempting sample collection, the drum was inspected for the following factors as a minimum;

- Was the drum pressurized (bulging/ visual dimples);
- Crystals forming on the exterior around any openings;
- Visual identification of leaks, holes or stains;
- Identifiers that provide information on potential contents;
- Composition and type of drum (steel/poly and open/bung);

- Condition, estimated age if labeled, exterior rust; and,
- Sampling accessibility (was the drum vertical, horizontal, buried, etc).

Drums that exhibited evidence of pressurization and/or crystal formation were not sampled by EBA. EBA field technicians identified any barrels onsite that were exhibiting the above features and determined if those barrels were safe for sampling. Compromised drums that were not sampled were recorded for drum location and estimation of contents if labeled.

For metal drums not sitting directly on earth, the drum was grounded using grounding wires, alligator clips and a grounding rod or metal structure if practical.

Prior to opening of the lid, the opening equipment was applied to the bung or drum ring and an electrical conductive current path was allowed time to form. EBA used spark resistant tools for the opening of equipment.

Due to contents within all barrels being frozen, EBA was unable to collect samples of drum contents at the time of assessment.

4.5 Personal Protective Equipment

During sampling, EBA personnel wore personal protective equipment (PPE) that is to industry standards for such work being performed. PPE used in the assessment included;

- Half face dual cartridge air purifying respirator with P100 HEPA cartridge filters for sampling of building materials;
- Half face dual cartridge air purifying respirator with P100 HEPA/organic vapour combination cartridge filters for sampling of fluids;
- Acid resistant rubber apron and rubber gloves extending to the elbows for sampling of drums;
- CSA approved full-face shield for sampling of drums;
- CSA approved hard hat;
- Leather gloves for sampling of building materials;
- Nitrile gloves for the sampling of chemicals or reagents;
- CSA approved safety glasses;
- Steel toed boots (leather and acid resistant rubber); and,
- Hi-Visibility safety vests.

Additional safety equipment onsite included a first aid kit, fire extinguisher and portable eye wash station.

5.0 ASSESSMENT RESULTS

The results of the assessment are provided in the following sub-sections.

5.1 Building Assessment

Prior to entering the buildings located on the Property, EBA reviewed the structural integrity for obvious signs of compromise. EBA's field assessors made a determination of entering the buildings after visually reviewing the structural integrity of the exterior components for obvious signs of disrepair. Figure 1 is an overview of the buildings located on the Property within the Mill Area. EBA observed the following characteristics of the buildings located on the Property;

- Warehouse shown in photograph No. 1 and labeled as building 1 in Figure 1:
 - Concrete pad construction 8400² m²;
 - Second floor office area in one half;
 - Open concept in most areas with approximately 40 ft high ceilings;
 - Metal frame construction with batten insulation and exterior metal siding;
 - Hazardous materials identified; and,
 - Visible moisture ingress within the former lab area on the main floor.
- Millwright building labeled as building 2 in Figure 1:
 - Concrete slab on grade foundation 990 m²,
 - Metal frame construction with batten insulation and exterior metal siding; and,
 - Suspect hazardous materials identified.
- Fluid storage building shown in photograph No. 2 and labeled as building 3 in Figure 1:
 - Concrete slab on grade foundation measuring approximately 120 m²,
 - Metal frame construction with batten insulation and exterior metal siding; and,
 - Suspect hazardous materials identified.
- Mill building shown in photograph No. 3 and labeled as building 4 in Figure 1:
 - Metal frame construction with batten insulation and exterior metal siding;
 - Metal q-decking and asphalt torch-on exterior roof;
 - Multiple levels in numerous locations;
 - Concrete slab with portions below grade totaling approximately 13,850 m²;
 - Hazardous materials identified;
 - Heavy dust contamination suspect to be high in lead and zinc in the interior; and,

² All estimated sq meters foot prints were acquired from Google Earth images

- Components of the structure were intact but visibly impacted by weathering with water intrusion from the concrete slab and perimeter walls in select locations.
- Warehouse shown in photograph No. 4 and labeled as building 5 in Figure 1:
 - Located on the north of the guard building;
 - Q-deck walls and ceiling with metal framing;
 - Approximately 380 m²; and,
 - No suspect hazardous materials identified.
- Reagents building shown in photograph No. 5 and labeled as building 6 in Figure 1:
 - Adjacent to the mill on the north side;
 - Q-deck walls and ceiling with metal framing;
 - Approximately 950 m²; and,
 - Suspect hazardous materials identified.
- Crusher building shown in photograph No. 6 and labeled as building 7 in Figure 1:
 - Exterior metal q-decking with metal framing;
 - Foot print of approximately 340 m²;
 - The potential for suspect hazardous materials identified; and,
 - Building was visually in disrepair and structurally not sound therefore it was not entered for a thorough assessment.
- Fine ore building shown in photograph No. 7 and labeled as building 8 in Figure 1:
 - Foot print of approximately 800 m²;
 - The potential for suspect hazardous materials identified; and,
 - Building was visually in disrepair and structurally not sound therefore it was not entered for a thorough assessment.
- Guard house shown in photograph No. 8 and labeled as building 9 in Figure 1:
 - 2' x 4' wood frame construction with batten insulation;
 - Approximately 320 m²; and,
 - Suspect hazardous materials identified.
- Two mobile trailers used as the lunchroom and change rooms labeled as building 10 in Figure 1:
 - No suspect hazardous materials identified.

- Ore load out building labeled as building 11 in Figure 1:
 - 2’ x 4’ wood frame construction with batten insulation; and,
 - No suspect hazardous materials identified.

5.2 Asbestos-Containing Materials

EBA collected and submitted 113 samples of suspected ACMs to the laboratory for analysis. Based on the findings of our assessment, ACMs were identified within some of the samples submitted. Materials confirmed to be asbestos containing are outlined within Tables 1-3. Analytical results, sample point locations and descriptions of all materials assessed for asbestos content are summarized in Tables 4 – 4b. Materials confirmed to be asbestos containing are outlined in **RED** bold within Tables 4, 4a and 4b in the table section.

Photographic documentation for confirmed ACMs is included within Appendix B. Analytical certificates of analysis for asbestos are included within Appendix C.

Based on the findings of our assessment, the following is a summary of ACMs and estimated quantities identified on the Property at the time of EBA’s assessment.

5.2.1 Warehouse Building

Table 1 Summary of Asbestos Containing Materials – Warehouse Building, Faro Mine Site

Sample Identification	Type	Volume/Quantity	Location	Condition
1482-006	Sheet flooring	200 sq ft	Warehouse mezzanine lunchroom	Fair
1482-009	12"x12" Grey vinyl floor tile	100 sq ft	Warehouse main floor	Fair
1482-014	3'x2' white stippled ceiling tile	1000 sq ft	Warehouse main floor lab	Poor
1482-015	12"x12" white w/beige fleck vinyl floor tile	2000 sq ft	Warehouse 2 nd floor hallway	Poor
1482-017	Grey checkered pattern linoleum	200 sq ft	Ware house 2 nd floor office	Good
1482-018	Drywall joint compound	15000 sq ft*	Warehouse 2 nd floor office #34 wall	Fair-poor
1482-022	Drywall joint compound	15000 sq ft*	Warehouse 2 nd floor hallway wall	Fair
1482-023	Drywall joint compound	15000 sq ft*	Warehouse 2 nd floor corner office wall	Fair
1482-024	Drywall joint compound	15000 sq ft*	Warehouse 2 nd floor top of stairwell	Fair
1482-026	Drywall joint compound	15000 sq ft*	Warehouse 2 nd floor storage room	Fair
1482-027	Drywall joint compound	15000 sq ft*	Warehouse 2 nd floor janitors room	Fair
1482-028	Drywall joint compound	15000 sq ft*	Warehouse 2 nd floor washroom	Fair
1482-029	Drywall joint compound	15000 sq ft*	Warehouse 2 nd floor lab storage	Fair
1482-030	12"x12" beige vinyl floor tile	2000 sq ft	Warehouse 2 nd floor hallway	Poor
1482-031	Pipe insulation at elbow	500*	Warehouse 2 nd floor lab storage	Fair
1482-032	Pipe insulation on straight run	1000 lin ft*	Warehouse 2 nd floor lab storage	Good
1482-033	Pipe insulation on straight run	1000 lin ft*	Warehouse 2 nd floor boiler room	Good
1482-034	Pipe insulation at elbow	500*	Warehouse 2 nd floor boiler room	Fair
1482-036	Drywall joint compound	15000 sq ft*	Warehouse 2 nd floor boiler room	Fair

Note: *Quantity is an estimate of combined materials deemed to be asbestos containing within the area

Drywall Joint Compound

EBA identified eight of twelve drywall joint compound samples for the second floor of the Warehouse that were analytically determined to be asbestos containing. Based on this, EBA recommends that all drywall joint compound within the second floor be considered asbestos containing unless grid sampling is completed to differentiate areas of asbestos containing drywall joint compound and areas that do not contain asbestos. Drywall joint compound samples collected for the first floor were analytically determined to be non-detect for asbestos.

Pipe Insulation

EBA identified five of six mudded pipe insulation samples that were analytically determined to be asbestos containing. Five of the samples collected on the second floor were asbestos containing; the one sample collected on the first floor was analytically determined to be non-asbestos containing. EBA recommends that all pipe insulation at the elbows/fittings and the straight runs be considered asbestos containing, unless confirmed to be fiberglass insulation. The one sample that was analytically determined to be non-asbestos could have been a section that had been patched/repared. Photographs No. 9 and 10 show piping coated in asbestos containing insulation.

Floor Tiles

Asbestos containing 12"x12" beige vinyl floor tile was identified within the hallways of the second floor and main floor office off the former lab. The ACM was in very poor condition in several locations. All floor tiles visually similar to identified ACM's should be considered as asbestos containing unless analytically proven otherwise. Photograph No. 11 and 12 show identified asbestos containing floor tiles.

Transite Cement Board

Labeled asbestos containing transite cement board was identified within the fume hoods and cabinets in the second floor laboratory. The ACM was in good condition at the time of assessment as shown in photograph No. 13.

5.2.2 Mill Building

Table 2 Summary of Asbestos Containing Materials – Mill Building, Faro Mine Site

Sample Identification	Type	Volume/Quantity	Location	Condition
1482-041	12"x12" beige vinyl floor tile	1000 sq ft	Mill maintenance office	Fair
1482-045	Pipe insulation on straight run	5000 lin ft*	Mill, crusher area	Fair
1482-048	Drywall joint compound	800 sq ft	Mill assay lab office	Fair
1482-053	Vermiculite	7 pks	Mill, Machine shop in GE boxes	Good
1482-054	Pump packaging	50 lin ft	Mill, Machine shop hung on wall	Good
1482-056	Pipe insulation on boiler pipe	5000 lin ft*	Mill, heat plant	Fair
1482-057	Pipe insulation at elbow	5000*	Mill, heat plant	Fair
1482-058	Pipe insulation at elbow	5000*	Mill, heat plant	Fair
1482-059	12"x12" grey vinyl floor tile	3000 sq ft	Mill, Upper office	Fair

Note: *Quantity is an estimate of combined materials deemed to be asbestos containing within the area

Drywall Joint Compound

EBA identified drywall joint compound to be asbestos containing in the office accessed from the former assay laboratory. Additional areas sampled for drywall joint compound was analytically determined to be non-asbestos containing.

Floor Tiles

Asbestos containing 12"x12" beige vinyl floor tile was identified within the Mill maintenance office which is located in the central Mill area. Asbestos containing 12"x12" grey vinyl floor tile was identified within the Mill upper office area at the west end of the Mill. The ACM was in fair condition at the time of assessment. All floor tiles visually similar to identified ACM's should be considered as asbestos containing unless analytically proven otherwise.

Pipe Insulation

EBA identified mudded pipe insulation samples that were analytically determined to be asbestos containing. All samples collected were asbestos containing at the elbows/fittings and on the straight runs. Due to the immense square footage of the mill and inadequate lighting, the quantities are a conservative estimate for linear footage and quantities of elbows/fittings within the Mill. Unless analytically proven, all mudded insulation associated with the piping elbows and straight runs should be considered asbestos containing. Photograph No. 14 and 15 show piping in the Mill with asbestos containing insulation.

Vermiculite Insulation

Asbestos contaminated vermiculite insulation was identified within General Electric packaging of machine parts on the shelf within the Machine Shop. EBA recommends that all packaging that contains the vermiculite be disposed as asbestos waste. Photograph No. 16 shows packaging with the contaminated vermiculite insulation.

Pump Packaging

Asbestos containing pump packaging (rope gasket) was identified in the machine shop in the parts area. As this packaging was used as a gasket on machinery, EBA recommends that machine parts where gaskets are required be checked for this ACM prior to disposal of machinery from within the Mill. Photograph No. 17 provides an example of the ACM from where it was sampled in the Machine Shop.

Transite Cement Rain Water Leaders

EBA visually identified asbestos containing transite cement piping that was utilized as rain water leaders within the Mill. The rainwater leaders extend from the ceiling throughout the mill into the drainage system. As rainwater leaders are mostly concealed, EBA estimated a total of 5000 linear ft within the Mill. Due to the immense square footage of the mill and inadequate lighting, the quantities are a conservative estimate for linear footage. The material was not sampled as to not compromise the operation of the piping. An example of the rainwater leader located in the Mill is shown in photograph 18.

Transite Electrical Breakers

EBA visually identified asbestos containing transite cement board used as circuit components within the Mill electrical rooms. The material was not sampled nor quantified due to the electrical equipment being energized. An example of the transite cement breakers is shown in photograph 19.

5.2.3 Guard House

Table 3 Summary of Asbestos Containing Materials – Guard House, Faro Mine Site

Sample Identification	Type	Volume/Quantity	Location	Condition
1482-090	12"x12" beige vinyl floor tile	100 sq ft	1 st floor office	Good
1482-098	12"x12" vinyl floor tile	300 lin ft	Concealed in environmental office	Unknown

Floor Tiles

EBA identified 12"x12" beige vinyl floor tiles and 12"x12" concealed floor tiles under existing flooring within the Environmental laboratory that were determined to be asbestos containing. EBA did not identify concealed flooring in any other areas of the guardhouse.

5.3 Lead Based Paints

EBA collected and submitted eleven (11) LBP samples for laboratory analysis. Based on the findings of our assessment, LBPs were identified within all of the samples submitted. Table 5, within the tables section, summarizes sample point locations and paint descriptions. Materials confirmed to be lead based are outlined in **RED** bold within Table 5.

Sample point locations for materials collected are included in the Figures section. Photographic documentation for confirmed LBPs is included within Appendix B. Analytical certificates of analysis for LBP are included within Appendix D.

EBA identified the following lead based paints;

- Blue lead based paint applied to the interior walls of the Warehouse building (EBA sample No 1482-L001) requiring non-regulated disposal. This paint was visually identified within multiple areas of the Warehouse and was observed to be in poor condition at the time of assessment;
- Silver lead based paint applied to the interior walls of the Warehouse building (EBA sample No 1482-L002) requiring non-regulated disposal. This paint was visually identified within multiple areas of the Warehouse and was observed to be in fair to poor condition at the time of assessment;
- Red lead based paint applied to the drive-through overhead doors of the Warehouse building (EBA sample No 1482-L003) requiring regulated disposal. This paint was visually identified on most overhead doors within the Warehouse and was observed to be in fair to poor condition at the time of assessment as shown in photograph No. 20;

- Yellow lead based paint applied to the interior walls of the former welding room of the Warehouse (EBA sample No 1482-L004) requiring regulated disposal. This paint was only identified within the Warehouse and was in fair to poor condition at the time of assessment;
- Blue lead based paint applied to walls of the mezzanine lunchroom within the Warehouse (EBA sample No 1482-L005) requiring non-regulated disposal. This paint was visually identified in multiple areas within the Warehouse and was in good to fair condition at the time of assessment;
- Beige lead based paint applied to walls of the mezzanine lunchroom within the Warehouse (EBA sample No 1482-L006) requiring non-regulated disposal. This paint was visually identified in multiple areas within the Warehouse especially in the second floor office area and was in good to fair condition at the time of assessment;
- Grey lead based paint applied to the walls of the welding shop in the Warehouse welding room (EBA sample No 1482-L007) requiring regulated disposal. This paint was visually identified in additional areas of the Warehouse and was in fair condition at the time of assessment as shown in photograph No. 21;
- White interior lead based paint applied to the walls of the second floor offices in the Warehouse (EBA sample No 1482-L008) requiring non-regulated disposal. This paint was visually identified within multiple offices of the Warehouse and was in good to fair condition at the time of assessment;
- Green interior lead based paint applied to the walls of the small drive-through warehouse (EBA sample No 1482-L009) requiring regulated disposal. This paint was only identified within this location and was in poor condition at the time of assessment;
- Blue lead based paint applied to the walls of the Storage area within the Mill (EBA sample No 1482-L010) requiring regulated disposal. This paint was visually identified in multiple areas within the Mill and was in fair to poor condition at the time of assessment as shown in photograph No. 22; and,
- Beige interior lead based paint applied to the walls of the second level office area of the Mill (EBA sample No 1482-L011) requiring non-regulated disposal. This paint was visually identified on multiple offices within the Mill and was in good to fair condition at the time of assessment.

5.4 Lead Piping and Components

Based on the construction date of the buildings and associated plumbing components, EBA suspects that solder associated with the drinking water piping throughout the buildings may be lead based. Historically, lead solder was mainly used for the connection of copper piping in domestic water supply, hot and cold systems.

EBA identified bell housings associated with the rain water leaders at the roof level within the Mill building suspected to be lead based.

5.5 Polychlorinated Biphenyls

Based on the findings and limitations of our visual assessment, electrical equipment suspect of containing PCBs was identified within the buildings on the Property. EBA identified the following lamp ballasts suspect of PCB content throughout many of the buildings;

- Fluorescent lamp ballast General Electric 16A240N; and,
- Fluorescent lamp ballast General Electric 17A240T.

At the time of assessment, EBA identified fluorescent lamp ballast General Electric 17A240T within ceiling mounted high pressure sodium lighting that was removed from usage as shown in photograph No. 23. These lights were observed in numerous locations throughout the buildings on-site. EBA recommends that all light ballasts be checked prior to disposal for the identifier number outlined above. If light ballasts have identifier numbers different than listed in this section they should be checked to confirm PCB content.

EBA reviewed additional ballasts in each building and identifiers stating PCB content were not identified. The additional ballasts that EBA observed to be non-PCB containing are as follows;

- Fluorescent lamp ballast General Electric 17A240E³; and,
- Fluorescent lamp ballast General Electric 17A240EW.

5.5.1 Polychlorinated Biphenyls in Transformers

EBA sampled the following transformer that was decommissioned in the Warehouse next to the former welding shop. The following PCB concentration was detected within the transformer;

- Total PCB of 2.8 mg/kg within the green transformer with identification number 25741 as depicted in photograph No. 24.

Additional transformers stock piled in this location were identified on the serial plates to not contain insulating oil suspect of being PCB based.

EBA identified a large orange colored transformer in the electrical yard behind the Mill. This transformer was identified by label to contain PCBs within the insulating oil as depicted in photograph No. 25. Confirmation of PCB concentration and quantity is unavailable due to the inability to open the transformer at the time of assessment.

5.6 Ozone Depleting Substances

Based on the findings and limitations of our visual assessment, the following ODS-containing equipment was identified within the Property;

- Twenty pound tank labeled Freon 22 located in the control room of the Mill;
- One freezer located in the former lab on the second floor of the Warehouse Building containing an unknown quantity of refrigerant;

³ The “E” denotes environmentally friendly and therefore does not contain PCB content.

- Fire extinguishers were located throughout the Property, but EBA understands that they belong to the mine manager, Denison Environmental; and,
- Refrigerators and freezers were located within the Mill and Guardhouse containing unknown quantities of refrigerant.

5.7 Elemental Mercury

Based on the findings and limitations of our visual assessment, the following mercury-containing equipment was identified within the Property;

- Wall mounted mercury containing switches exhibited in photograph No. 26, within the office and lab areas of the Mill, totaling approximately 18;
- Wall mounted mercury containing switches within the Warehouse totaling approximately five;
- Wall mounted mercury containing switches within the Guard shack totaling approximately three; and,
- Estimated 1000 fluorescent lamp tubes containing a small amount of mercury vapor located throughout the buildings located on the Property.

5.8 Drum Sampling

At the time of sampling, all drums and contents on the Property were frozen and therefore not sampled. EBA recorded labelled drums and quantity on the Property as outlined in Table 6-7 within the Tables section.

5.9 Hydrocarbons

EBA identified the following hydrocarbon fluids in various locations onsite:

- 450 L plus 3 x 55 kg drums of industrial grease;
- 80 L mineral insulating oil;
- 20 L compressor oil;
- 540 L heavy duty motor oil;
- 1,800 L transmission fluid;
- 235 L gasoline;
- 180 L motor oil;
- 740 L hydraulic fluid;
- Unquantifiable amounts of waste oil; and,
- Numerous ASTs containing Diesel associated with buildings which were still in use and used as storage on the Property.

Numerous barrels mostly empty but with residue, were stock piled in the NW dump area as shown on Figure 14. The area within the earth berm contained considerable hydrocarbon contamination as shown in photograph No 27 and 28.

Tanks, storing waste oil, were located behind the Mill. EBA understands that, at the time of assessment, Denison Environment was draining the tanks of waste oil for burning within the Waste oil furnace located in the Mill Wright building. Photographic documentation of tanks containing waste oil is shown in photograph No. 29 and 30.

A detailed breakdown of location and quantities is included within Table 6.

EBA did not document hydrocarbon stock within the Millwright building as this is where Denison Environment was stockpiling vehicle parts and supplies.

5.10 Chemical Inventory

EBA identified the following chemicals on the property;

- Six pallets of caustic soda pearls located in the Warehouse;
- 500 lbs of nitrogen phosphorous and potash located in the Warehouse;
- 20,000 L aerophine holding tank suspect to contain residue located in the Reagents building;
- 20,000 L empty percol holding tank located in the Reagents building;
- Two 50 lb bags of percol pellets located in the Reagents building;
- 20,000 L empty uniden M-60 (filter acid) holding tank located in the Reagents building;
- 2000 L empty methyl isobutyl carbinol holding tank located in the Reagents building;
- 2000 L empty dow frothers holding tank located in the Reagents building;
- 2000 L empty cyanide solution holding tank located in the Reagents building;
- 2000 L empty potassium isobutyl xanthate holding tank located in the Reagents building;
- 20,000 L empty sodium sulphate holding tank located in the Reagents building;
- 100 lbs of carbon granules located in the Reagents building;
- 20 L of liquid pH 4 solution located in the Reagents building;
- 200 g container of pentahydrate sodium metasilicate located in the Mill assay lab;
- 2 x 1 lb cylinders of cyanide calibration gas located within the Mill assay lab;
- Industrial x-ray tubes containing an unknown quantity of beryllium located in the x-ray room in Mill as shown on Figure 12;
- Approximately 225 x 205 L barrels of methyl isobutyl carbinol stock piled north of the Mill area as shown on Figure 13 and photograph No. 31 and 32. Barrel volume ranged from full to empty. EBA estimates half the barrels have contents at the time of assessment;

- Cyanide carbide estimated to be 1000 L and empty located behind the mill;
- 1 L can of toluene located in the Heat plant area of the Mill; and,
- Silver painted trailer tank estimated to be 5000 L containing glycol based solution located behind the Mill on the South side.

Numerous chemicals in small quantities were located in a HAZMAT labeled shed on the Main floor of the Warehouse and throughout the Mill. A detailed breakdown of location and quantities is included within Table 7.

5.11 Batteries

EBA identified the following areas where discarded batteries were stored;

- Ten pallets of batteries totaling approximately 150, of various types and sizes stored in the Warehouse Building as identified on Figure 2 and within Photograph No. 33;
- Two boxes of battery acid in the HAZMAT shed located in Warehouse Building;
- Two large batteries located in a cupboard within the former Assay lab of the Mill;
- Seven large batteries located in the generator room of the Mill;
- Battery bank located in an abandoned electrical house behind the Mill by the transformer station; and,
- Four batteries located in the former Pump House.

5.12 Miscellaneous Debris and Materials

EBA identified areas where miscellaneous debris was discarded around the Property. Areas of miscellaneous debris were as follows;

- Metal debris, machine parts and abandoned vehicles to the north of the small warehouse as shown in photograph No 34 and depicted on figure 6;
- Machinery located to the north of the Warehouse as shown in photograph No. 35;
- Used tire storage located north of the NW dump area as shown in photograph No. 38 and depicted figure 14;
- Metal debris within a location northeast of the Mill area as depicted in figure 15 and shown in photographs No. 36 and 37;
- Metal and wood debris adjacent to the Crusher building; and,
- Miscellaneous machine parts located behind the Mill.

Miscellaneous materials were located onsite in various areas of the buildings located on the Property. A detailed breakdown of location and quantities is included within Table 8.

5.13 Water Ingress

At the time of assessment, EBA identified the following areas where water ingress had occurred causing microbial amplification;

- Mezzanine lunchroom in the Warehouse building totaling approximately 10 ft²;
- Room adjacent to the former laboratory on the main floor of the warehouse totaling approximately 100 ft²;
- Room adjacent to the former laboratory on the second floor of the warehouse totaling approximately 50 ft²;
- Boiler room on the second floor of the Warehouse totaling approximately 300 ft²;
- MCCRM 2 room at the crusher area in the Mill was heavily impacted by moisture. EBA did not enter the room for assessment due to the potential for electrical current charging the standing water on the floor; and,
- Water ingress was apparent in the stairwells leading under the Mill building and in numerous other areas associated with the perimeter of the structure.

6.0 RECOMMENDATIONS

EBA offers the following recommendations based on the findings of the assessment.

6.1 Asbestos Containing Materials

ACMs were identified within the Mill, Warehouse and Guard House of the Property. During demolition activities, ensure the ACMs are removed and disposed in accordance with the requirements of the Yukon Workers Compensation Health and Safety Board, the Transportation of Dangerous Goods Act and the Yukon Ministry of Environment. EBA recommends the following abatement procedures based on risk of fiber release;

- Abatement of asbestos containing sheet floorings including linoleums following high risk work procedures;
- Abatement of asbestos containing floor tiles following moderate risk work procedures;
- Abatement of asbestos containing ceiling tiles following high risk work procedures;
- Abatement of asbestos containing drywall joint compound following high risk work procedures;
- Abatement of asbestos containing pipe insulation at the elbows/fittings following moderate risk glove bagging work procedures;
- Abatement of asbestos containing mudded pipe insulation on straight runs following high risk work procedures;
- Abatement of asbestos containing transite electrical board and rain water leaders following moderate risk work procedures;

- Abatement of asbestos containing pump packaging following moderate risk work procedures; and,
- Abatement of asbestos contaminated vermiculite insulation in packaging following moderate risk work procedures.

EBA recommends that ACMs identified on the second floor of the Warehouse be abated following high risk work procedures to offer cost savings rather than abatement efforts in sections.

6.2 Lead Based Paint

LBP were identified within all samples submitted. If LBPs are to be demolished in place, the contractor must implement an exposure control plan to ensure workers are protected from exposure to finely divided airborne lead particles. At that time, ensure LBPs are removed and disposed in accordance with the requirements of the Yukon Workers Compensation Health and Safety Board, the Transportation of Dangerous Goods Act and the Yukon Ministry of Environment.

6.3 Lead Solder

If the copper piping and associated lead solder within the Cook house and Bunk house is not removed for recycling, EBA recommends that solder associated with the piping be removed and disposed as hazardous waste in accordance with the requirements of the Yukon Workers Compensation Health and Safety Board, the Transportation of Dangerous Goods Act and the Yukon Ministry of Environment.

6.4 Polychlorinated Biphenyls

Based on the findings and limitations of our visual assessment, PCB-containing electrical equipment (fluorescent lamp ballasts) was identified. During EBA's assessment, lamp ballasts were systematically assessed and referenced against Environment Canada's document "Environmental Protection Series – Identification of Lamp Ballasts Containing PCBs, August 1991." The lamp ballasts identified within the Property exhibited identifiers for PCB content. However, for ballasts not easily assessed, identifiers may be present on the portion of the lamp ballast that is adhered to the light shield. Due to the lamp ballasts being energized, EBA did not remove the ballast to assess for additional identifiers. Therefore, the potential exists for PCB containing lamp ballasts to be present where PCB identifiers were not present. EBA recommends that PCB containing lamp ballasts be sent to an approved hazardous material transfer station for shipment to appropriate recycling/disposal facility.

6.5 Ozone Depleting Substances

ODS-containing equipment was identified within the Property. During demolition activities, ensure ODS-containing equipment is removed and disposed in accordance with the requirements of the Yukon Workers Compensation Health and Safety Board, the Transportation of Dangerous Goods Act and the Yukon Ministry of Environment.

6.6 Mercury Containing Equipment

Mercury containing equipment was identified within the Property. During demolition activities, ensure Mercury containing equipment is removed and disposed in accordance with the requirements of the Yukon

Workers Compensation Health and Safety Board, the Transportation of Dangerous Goods Act and the Yukon Ministry of Environment.

6.7 Drum Contents

EBA assessed drums located on site in various locations. As the contents of the drums in the ambient environment were frozen at the time of assessment, EBA recommends that drums be sampled in the spring/summer season to ensure contents are in liquid state. The basis for the sampling would be to confirm drum contents are as labeled or to analytically identify contents. At that time, disposal procedures can be confirmed for the drum contents located on the Property.

Drums identified to contain waste oil, if not utilized on site within the Waste oil furnace, should be disposed through a permitted Special Waste Transfer Station, or permitted waste oil burner in accordance with the requirements of the Yukon Workers Compensation Health and Safety Board, the Transportation of Dangerous Goods Act and the Yukon Ministry of Environment.

6.8 Chemicals

EBA identified chemicals within the buildings on the Property. During demolition activities, ensure chemicals are removed and disposed in accordance with the requirements of the Yukon Workers Compensation Health and Safety Board, the Transportation of Dangerous Goods Act and the Yukon Ministry of Environment. Identified chemicals may be disposed through a permitted Special Waste Transfer Station.

7.0 LIMITATIONS OF REPORT

This report and its contents are intended for the sole use of Government of Yukon, Assessment & Abandoned Mines and its agents. EBA Engineering Consultants Ltd. operating as EBA, A Tetra Tech Company, does not accept any responsibility for the accuracy of any of the data, the analysis, or the recommendations contained or referenced in the report when the report is used or relied upon by any Party other than Government of Yukon, Assessment & Abandoned Mines, or for any Project other than the proposed development at the subject site. Any such unauthorized use of this report is at the sole risk of the user. Use of this report is subject to the terms and conditions stated in EBA's Services Agreement. EBA's General Conditions are provided in Appendix A of this report.

8.0 CLOSURE

We trust this report meets your present requirements. Should you have any questions or comments, please contact the undersigned at your convenience.

Sincerely,
EBA Engineering Consultants Ltd.

Written by;



Shane Dooley, Dip Tech
AHERA Building Inspector #792
EBA, A Tetra Tech Company
Direct line: 867.668.2071 x258

Technical Review by;

Michael Glassco, ROHT
President
Sterling IAQ Consultants Ltd.
Direct Line: 604.681.2701 x102

Written by;



Chris Harwood, B.Sc
Environment Scientist
EBA, A Tetra Tech Company
Direct Line: 867.668.2071 x235

Senior Review by;



Donald Wilson, B.Sc.
Team Lead, Contaminants Group
EBA, A Tetra Tech Company
Direct line: 867.668.2071 x223

TABLES

Table 1	Asbestos Containing Materials – Warehouse
Table 2	Asbestos Containing Materials – Mill
Table 3	Asbestos Containing Materials – Guard House
Table 4	Asbestos Containing Material Samples
Table 5	Lead Based Paint Samples
Table 6	Hydrocarbon Inventory
Table 7	Chemical Inventory
Table 8	Miscellaneous Inventory

Table 4: Asbestos Containing Material Summary

Sample Identification	Type	Volume/Quantity	Location	% Asbestos
1482-001	Drywall joint compound	N/A	Warehouse mezzanine lunchroom	Non-detect
1482-002	Drywall joint compound	N/A	Warehouse mezzanine lunchroom	Non-detect
1482-003	Drywall joint compound	N/A	Warehouse mezzanine lunchroom	Non-detect
1482-004	3'x2' stipple ceiling tile	N/A	Warehouse mezzanine lunchroom	Non-detect
1482-005	3'x2' stipple black ceiling tile	N/A	Warehouse mezzanine lunchroom	Non-detect
1482-006	Sheet flooring	200 sq ft	Warehouse mezzanine lunchroom	1-5% Ch
1482-007	Drywall joint compound	N/A	Office wall above welding shop	Non-detect
1482-008	12"x12" beige vinyl floor tile	N/A	Office above welding shop	Non-detect
1482-009	12"x12" grey vinyl floor tile	100 sq ft	Warehouse main floor	1-5% Ch
1482-010	Mudded pipe insulation	N/A	Warehouse main floor	Non-detect
1482-011	Drywall joint compound	N/A	Warehouse main floor lunchroom	Non-detect
1482-012	Drywall joint compound	N/A	Warehouse main floor office off lab	Non-detect
1482-013	Drywall joint compound	N/A	Warehouse main floor office off lab	Non-detect
1482-014	3'x2' white stippled ceiling tile	1000 sq ft	Warehouse main floor lab	1-5% Am
1482-015	12"x12" white w/beige fleck vinyl floor tile	2000 sq ft	Warehouse, 2nd floor hallway	1-5% Ch
1482-016	3'x2' white w/black stipple ceiling tile	N/A	Warehouse, 2nd floor	Non-detect
1482-017	Grey checkered pattern linoleum	200 sq ft	Warehouse, 2nd floor office	85-90% Ch
1482-018	Drywall joint compound	15000 sq ft*	Warehouse, 2nd floor office #34	1-5% Ch
1482-019	Drywall joint compound	N/A	Warehouse, 2nd floor hallway	Non-detect
1482-020	Drywall joint compound	N/A	Warehouse, 2nd floor mens wshrm	Non-detect
1482-021	Drywall joint compound	N/A	Warehouse, 2nd floor office #22	Non-detect
1482-022	Drywall joint compound	15000 sq ft*	Warehouse, 2nd floor hallway	1-5% Ch
1482-023	Drywall joint compound	15000 sq ft*	Warehouse, 2nd floor corner office	1-5% Ch
1482-024	Drywall joint compound	15000 sq ft*	Warehouse, 2nd floor top of stairs	1-5% Ch
1482-025	Drywall joint compound	N/A	Warehouse, 2nd floor former lab	Non-detect
1482-026	Drywall joint compound	15000 sq ft*	Warehouse, 2nd floor storage room	1-5% Ch
1482-027	Drywall joint compound	15000 sq ft*	Warehouse, 2nd floor janitors room	1-5% Ch
1482-028	Drywall joint compound	15000 sq ft*	Warehouse, 2nd floor washroom	1-5% Ch
1482-029	Drywall joint compound	15000 sq ft*	Warehouse, 2nd floor lab storage	1-5% Ch
1482-030	12"x12" beige vinyl floor tile	2000 sq ft	Warehouse, 2nd floor hallway	1-5% Ch
1482-031	Pipe insulation at elbow	~ 500*	Warehouse, 2nd floor lab storage	50-60% Ch
1482-032	Pipe insulation on straight run	~ 1000 lin ft	Warehouse, 2nd floor lab storage	60-70% Am
1482-033	Pipe insulation on straight run	~ 1000 lin ft	Warehouse, 2nd floor boiler room	60-70% Am
1482-034	Pipe insulation at elbow	~ 500*	Warehouse, 2nd floor boiler room	60-70% Ch
1482-035	Ducting paper wrap	N/A	Warehouse, 2nd floor boiler room	Non-detect
1482-036	Drywall joint compound	15000 sq ft*	Warehouse, 2nd floor boiler room	1-5% Ch
1482-037	Drywall joint compound	N/A	Reagents building, electrical room	Non-detect
1482-038	Did not submit*	N/A	Did not submit	N/A
1482-039	Did not submit*	N/A	Did not submit	N/A
1482-040	Drywall joint compound	N/A	Mill, maintenance office	Non-detect

EBA did not submit the sample numbers as numbers were skipped during sampling

XXXX - Asbestos containing material

Non-detect: Asbestos content was not analytically detected within sample

Ch - Chrysotile asbestos

Am - Amosite asbestos

* Total estimate of material within area which may include multiple sample locations

Table 4a: Asbestos Containing Material Summary

Sample Identification	Type	Volume/ Quantity	Location	% Asbestos
1482-041	12"x12" beige vinyl floor tile	1000 sq ft	Mill, maintenance office	1-5% Ch
1482-042	3'x2' White ceiling tile	N/A	Mill, drafting room	Non-detect
1482-043	Drywall joint compound	N/A	Mill, drafting room	Non-detect
1482-044	Drywall joint compound	N/A	Mill, grinding control room	Non-detect
1482-045	Mudded pipe insulation on straight run	5000 lin ft*	Mill, crusher area	70-80% Am
1482-046	12"x12" white ceiling tile	N/A	Mill, Assay lab office	Non-detect
1482-047	12"x12" beige vinyl floor tile	N/A	Mill, Assay lab office	Non-detect
1482-048	Drywall joint compound	800 sq ft	Mill, Assay lab office	1-5% Ch
1482-049	Drywall joint compound	N/A	Mill, Assay lab office	Non-detect
1482-050	Drywall joint compound	N/A	Mill, Upper server room	Non-detect
1482-051	Drywall joint compound	N/A	Mill, Adjacent to server room	Non-detect
1482-052	12"x12" white w/black vinyl floor tiles	N/A	Mill, Upper server room	Non-detect
1482-053	Vermiculite in GE packaging	7 pks	Mill, Machine shop	DNQ
1482-054	Pump packaging	50 lin ft	Mill, Machine shop	80-85% Ch
1482-055	Sucker bags	N/A	Mill, Dewatering control room	Non-detect
1482-056	Mudded pipe insulation on boiler pipe	5000 lin ft*	Mill, Heat plant	85-90% Am
1482-057	Mudded pipe insulation on pipe elbow	1000*	Mill, Heat plant	60-70% Ch
1482-058	Mudded pipe insulation on pipe elbow	1000*	Mill, Heat plant	60-70% Ch
1482-059	12"x12" grey vinyl floor tile	3000 sq ft	Mill, Upper office area	1-5% Ch
1482-060	Drywall joint compound	N/A	Mill, Upper office area	Non-detect
1482-061	Drywall joint compound	N/A	Mill, Upper office area	Non-detect
1482-062	Drywall joint compound	N/A	Mill, Upper office area	Non-detect
1482-063	Drywall joint compound	N/A	Mill, Upper office area	Non-detect
1482-064	Drywall joint compound	N/A	Mill, Upper office area	Non-detect
1482-065	Drywall joint compound	N/A	Mill, Upper office area	Non-detect
1482-066	Drywall joint compound	N/A	Mill, Upper office area	Non-detect
1482-067	Drywall joint compound	N/A	Mill, Upper office area	Non-detect
1482-068	Drywall joint compound	N/A	Mill, Upper office area	Non-detect
1482-069	Drywall joint compound	N/A	Mill, Upper office area	Non-detect
1482-070	3'x2' stippled ceiling tile	N/A	Mill, Upper office area	Non-detect
1482-071	Drywall joint compound	N/A	Mill, Electrical shop	Non-detect
1482-072	Drywall joint compound	N/A	Mill, Electrical shop	Non-detect
1482-073	Drywall joint compound	N/A	Mill, Electrical shop	Non-detect
1482-074	Drywall joint compound	N/A	Mill, Electrical shop	Non-detect
1482-075	3'x2' stippled ceiling tile	N/A	Mill, Main level lunch room	Non-detect
1482-076	Drywall joint compound	N/A	Mill, Main level lunch room	Non-detect
1482-077	Drywall joint compound	N/A	Mill, Main level lunch room	Non-detect
1482-078	Beige square pattern linoleum	N/A	Millwright building, upper office	Non-detect
1482-079	Drywall joint compound	N/A	Millwright building, upper office	Non-detect
1482-080	Drywall joint compound	N/A	Millwright building, upper office	Non-detect

XXXXX - Asbestos containing material

Non-detect: Asbestos content was not analytically detected within sample

Ch - Chrysotile asbestos

Am - Amosite asbestos

DNQ - Did Not Quantify, Asbestos content present but not quantified

* Total estimate of material within area which may include multiple sample locations

Table 4b: Asbestos Containing Material Summary

Sample Identification	Type	Volume/Quantity	Location	% Asbestos
1482-081	Dark beige pattern linoleum	N/A	Millwright building, upper office	Non-detect
1482-082	Pebble pattern linoleum	N/A	Millwright building, upper office	Non-detect
1482-083	Sheet flooring	N/A	Guard house, security desk	Non-detect
1482-084	Drywall joint compound	N/A	Guard house, 1st floor at stairwell	Non-detect
1482-085	3'x2' black stippled ceiling tile	N/A	Guard house, 1st floor	Non-detect
1482-086	Drywall joint compound	N/A	Guard house, entrance to garage	Non-detect
1482-087	Drywall joint compound	N/A	Guard house, First aid room	Non-detect
1482-088	Drywall joint compound	N/A	Guard house, First aid room	Non-detect
1482-089	Drywall joint compound	N/A	Guard house, 1st floor hallway	Non-detect
1482-090	12"x12" beige pattern vinyl floor tile	100 sq ft	Guard house, 1st floor office	1-5% Ch
1482-091	Drywall joint compound	N/A	Guard house, 1st floor office	Non-detect
1482-092	Drywall joint compound	N/A	Guard house, Janitors room	Non-detect
1482-093	Drywall joint compound	N/A	Guard house, Janitors storage room	Non-detect
1482-094	3'x2' stippled ceiling tile	N/A	Guard house, 1st floor hallway	Non-detect
1482-095	Drywall joint compound	N/A	Guard house, security office	Non-detect
1482-096	Drywall joint compound	N/A	Guard house, tool storage room	Non-detect
1482-097	Grey pebble pattern flooring	N/A	Guard house, 1st floor	Non-detect
1482-098	12"x12" concealed vinyl floor tile	300 sq ft	Guard house, enviro lab	1-5% Ch
1482-099	Drywall joint compound	N/A	Guard house, enviro office	Non-detect
1482-100	Drywall joint compound	N/A	Guard house, safety equipment room	Non-detect
1482-101	Drywall joint compound	N/A	Guard house, bulkhead in garage	Non-detect
1482-102	Drywall joint compound	N/A	Guard house, electrical room	Non-detect
1482-103	Drywall joint compound	N/A	Guard house, electrical room	Non-detect
1482-104	Drywall joint compound	N/A	Guard house, Hot water tank room	Non-detect
1482-105	Drywall joint compound	N/A	Guard house, 2nd floor top of stairs	Non-detect
1482-106	Drywall joint compound	N/A	Guard house, 2nd floor office	Non-detect
1482-107	Drywall joint compound	N/A	Guard house, 2nd floor office	Non-detect
1482-108	Drywall joint compound	N/A	Guard house, 2nd floor office	Non-detect
1482-109	Drywall joint compound	N/A	Guard house, 2nd floor server room	Non-detect
1482-110	Drywall joint compound	N/A	Guard house, 2nd floor hallway	Non-detect
1482-111	Drywall joint compound	N/A	Guard house, 2nd floor training room	Non-detect
1482-112	Drywall joint compound	N/A	Guard house, 2nd floor training room	Non-detect
1482-113	Drywall joint compound	N/A	Guard house, 2nd floor corner office	Non-detect
1482-114	Drywall joint compound	N/A	Guard house, 2nd floor office	Non-detect
1482-115	Drywall joint compound	N/A	Guard house, 2nd floor office	Non-detect
N/A	Asbestos gasket	8	Heat plant	N/A
N/A	Transite rain water leaders	1000 lin ft	Mill, throughout	N/A
N/A	Transite breakers	Unknown	Mill, Grinding control elec equip	N/A
VS	Transite board	100 sq ft	Warehouse, former lab	N/A
VS	12"x12" grey vinyl floor tile	600 sq ft	Warehouse former lab	N/A

XXXXX - Asbestos containing material

Non-detect: Asbestos content was not analytically detected within sample

Ch - Chrysotile asbestos

Am - Amosite asbestos

VS - Visually similar material

Table 5: Lead Based Paint Summary

Sample Identification	Type	Location	ICP mg/kg	TCLP mg/L
1482-L001	Blue paint on q-deck walls	Warehouse vehicle bay	6800	1.9
1482.L002	Silver paint on q-deck walls	Warehouse vehicle bay	4930	<5
1482-L003	Red paint on bay doors	Warehouse vehicle bay	35300	6.98
1482-L004	Yellow paint on q-deck walls	Warehouse welding room	3250	5.54
1482-L005	Blue paint in lunchroom	Warehouse, 2nd floor	302	<5
1482-L006	Beige paint in lunchroom	Warehouse, 2nd floor	292	<5
1482-L007	Grey paint in welding shop	Warehouse, welding room	5830	14.4
1482-L008	White interior paint	Warehouse, office	372	1.4
1482-L009	Green interior paint	Small warehouse west of Mill	5400	12.4
1482-L010	Blue paint in storage area	Heat plant in mill	6560	19.1
1482-L011	Beige interior paint in office	Mill, 2nd floor office	1310	1.98

XXXXXX - Analytically confirmed lead based paint

ICP: >90 ppm considered to be lead based

TCLP: < 5ppm does not require regulated disposal under the HWR

Table 6: Hydrocarbons Located Onsite

Type	Container(s)	Volume/Quantity	Location
Industrial grease	80 L drum	80 l	Warehouse
Heating oil	5000 L AST	Empty	Warehouse
Mineral insulating oil	180 L container	80 L	Warehouse
Compressor oil	20 L pails	20 L	Warehouse (storage cage)
Heavy duty motor oil	180 L drums	3 in total	Warehouse (storage cage)
Industrial grease	55 kg containers	3 in total	Warehouse (storage cage)
Transmission fluid	180 L drums	10 in total	Warehouse (storage cage)
Dowfrost HD	180 L drums	3 in total	Warehouse (storage cage)
Waste oil	180 L drums	20 L per container	Warehouse (storage cage)
Waste oil	180 L drums	180 L	Warehouse (storage cage)
Electrical insulating oil	180 L drums	180 L	Warehouse (storage cage)
Mohawk grease	1 pail	1 pail	Empty warehouse
Gasoline	10 - 25 L	6 cans	Reagents building
Brake fluid	4 L	4 L	Reagents building
Industrial Oil	180 L drums	100 L	Mill, fine ore bin area
Gasoline	20 L can	~ 5 L in can	Mill, machine shop
10W30 motor oil	4 L can	2/3 full	Mill, machine shop
Roofing tar	20 lb cans	6 Full	Mill, machine shop
Motor oil	180 L drums	Full	Mill, Heat plant
Hydraulic fluid	180 L drums	4 Full	Mill, Heat plant
Hydraulic fluid	20 L pail	Full	Mill, Heat plant
Above ground storage tank	5000 L	Empty	Mill, Heat plant lube room
Gasoline	20 L cans	2 x 1/2 full	Mill, welding shop
Waste oil	50 L cans	5 Full	Pump house
Industrial oil	180 L drums	3 x 1/2 full	Pump house
Gasoline	20 L cans	2 Full	Pump house
Oil sludge	20 L pails	4 1/2 full	NW dump
Waste oil	180 L drums	Full	NW dump
Waste oil	180 L drums	~150 empty	NW dump
Motor oil	20 L pails	~ 20 full	NW dump
Waste oil	Silver trailer tank	3/4 full	Behind Mill
Waste oil	180 L drums	10 frozen (full), 4 empty	Behind Mill
Waste oil	Red Bushmaster trailer tank	1/3 full	Behind Mill
Gasoline	Red Bushmaster trailer tank	1/3 full	Behind Mill
Waste oil	Green tank	Empty	Behind Mill
Waste oil	Silver tanker	Empty	Behind Mill
Waste oil	Blue tank on trailer	Empty	Behind Mill
Waste oil	Yellow square tank on wheels	1/3 full	Behind Mill
Waste oil	Silver tank inside berm	Empty	Behind Mill
Waste oil	Brown tank inside berm	1/3 full	Behind Mill

Table 7: Chemicals Located Onsite

Type	Container(s)	Volume/Quantity	Location
Caustic Soda Pearls	50 lb bags	6 pallets	Warehouse
Nitrogen Phosphorous & Pot Ash	50 lb bags	10 bags	Warehouse
Aerophine holding tank	20,000 L holding tank	Empty	Reagents Building
Percol holding tank	20,000 L holding tank	Empty	Reagents Building
Percol pelets	20 kg bags	2 bags	Reagents Building
Unidin M-60 (filter acid)	20,000 L holding tank	Suspect to have contents*	Reagents Building
Methy Isobutyl Carbinol	2000 L holding tank	Empty	Reagents Building
Dow Frothers	2000 L tank	Empty	Reagents Building
Cyanide solution	2000 L tank	2 Empty	Reagents Building
Potassium Isobutyl Xanthate	2000 L tanks	2 Empty	Reagents Building
Carbon dioxide	1 tank	Empty	Reagents Building
Sodium Sulphate	20,000 L tank	Empty	Reagents Building
Carbon granuals	50 lb bags	2 bags	Reagents Building
Liquid Ph 4	20 L open pail	20 L	Mill, assay lab
Pentahydrate sodium metasilicate	200 g	200 g	Mill, assay lab
Hydrogen cyanide calibration	1 lb of 10 ppm	2	Mill, assay lab
#22 cleaner	1 can	Empty	Mill, assay lab
Paint thinner	20 L can	Full	Mill, assay lab
Nitric Acid (61-70%)	10 L bottles	3 Full	Mill, assay lab
Base solution (Na2Br4O4 10H2O)	1 L plastic bottle	< 1 L	Mill, assay lab
Freon 22	20 lb tank	Estimated half full	Mill, control room
Berillyum x-ray tubes	2 tubes	Unknown (one leaking)	Mill, control room
Acetone	4 L can	Full	Mill, machine shop
Never seeze	2 cans	Full	Mill, machine shop
Bleach	4 L can	Full	Mill, machine shop
Varsol wash station	250 L drum	1/2 full	Mill, machine shop
Potassium hydroxide	250 L drum	1/2 full	Mill, heat plant
Sodium sulphate	Bags (degraded)	Full	Mill, heat plant
Activated alumina	250 L drum	1/2 full	Mill, heat plant
3242 water treatment	250 L drum	2 Full	Mill, heat plant
Toluene	1 L can	1/2 full	Mill, heat plant
Methyl Isobutal Carbonal	250 L drum	~ 80 empty	Drum collection
Methyl Isobutal Carbonal	250 L drum	~ 150 1/2 - full	Drum collection
Glycols	Silver tank	Full	Behind Mill

* EBA was unable to open the Uniden M-60 tank at time of assessment

Table 7a: Chemicals Located Onsite

Type	Container(s)	Volume/Quantity	Location
Ammonium chloride	500 g	6 Full	Warehouse, shed
Liquid cement	1 can	Full	Warehouse, shed
Hypoxy adhesive	1 L cans	2 Full	Warehouse, shed
#22 cleaner	4 L	1 full, 1 ~ 3L	Warehouse, shed
Solvent cement	1 L	10 Full	Warehouse, shed
Rubber cement	4 L	3 Half full	Warehouse, shed
Ammonium chloride	10 kg cans	2 Full	Warehouse, shed
Battery acid	2 boxes	Full	Warehouse, shed
Action 248 Industrial Cleaner	1 x 250 l can	1/3 full	Warehouse, shed
Leak tester (snoop)	952 cans	6 Full	Warehouse, shed
Welding spatter surpressant	952 g cans	1 full, 1 half full	Warehouse, shed
Developer spray	952 cans	9 Full	Warehouse, shed
Electrical cleaner	952 g cans	42 Full	Warehouse, shed
Diesel fuel conditioner	1 L	24 Full (one leaking)	Warehouse, shed
Graphite flakes	4 lbs	Full	Warehouse, shed
Neoprene bonding agent	270 g cans	14 Full	Warehouse, shed

Table 8: Miscellaneous Materials Onsite

Type	Container(s)	Volume/Quantity	Location
Car batteries	Pallet	10 pallets (150 batteries)	Warehouse
Magnaflock	50 lb bags	3 pallets	Warehouse
Sand	50 lb bags	11 bags	Warehouse
Quick set cement powder	50 lb bags	2 pallets	Warehouse
Soda Ash	50 lb bags	5 pallets	Warehouse
Bentonite	50 lb bags	6 pallets	Warehouse
Quick set cement powder	50 lb bags	1/2 pallet	Warehouse
Sand	50 lb bags	1 pallet	Empty warehouse
Puregold medium chips	50 lb bags	1 pallet	Empty warehouse
Grouting material	50 lb bags	1 pallet	Empty warehouse
Adhesive	946 ml can	500 mL	Reagents Building
Spray paint	946 mL can	500 mL	Reagents Building
Never Seize	946 mL can	500 mL	Reagents Building
Carbon dioxide welding tank	1 welding tank	Empty	Reagents Building
Fine ore bins	Unknown capacity	2 residual, 1 full	Mill, fine ore bin area
Oxygen tank	1 welding tank	Empty	Mill, fine ore bin area
Unlabelled gas canisters	3 tanks	Empty	Mill, fine ore bin area
Liquid Air tank	1 tank	Suspect empty	Mill, assay lab
Acetylene	1 tank	Unknown	Mill, welding area
Plaster	50 lb pails	4 Full	Mill, heat plant
Batteries	Large and small vehicle	8	Mill, heat plant lube room
Cl3 Ethylene	500 g container	2 Full	Mill, grinding floor cabinet
Linatex tri iso cyanatein	1 L	Full	Mill, grinding floor cabinet
Linatex #17 primer	4L cans	4 Full	Mill, grinding floor cabinet
Linatex # 7	1 L can	1/2 full	Mill, grinding floor cabinet
Linatex 3a cement	1 L can	10 Full	Mill, grinding floor cabinet
Linatex 14B cement	50 mL cans	12 Full	Mill, grinding floor cabinet
Linatex 14 cement	1 L can	10 Full	Mill, grinding floor cabinet
Hardener RF-SC	50 ml	9 Full	Mill, welding shop
Linatex 14 cement	1 L	3 Full	Mill, welding shop
BEHR waterproofing	4 L can	1/2 full	Mill, welding shop
Silica	50 lb bags	4 Full bags	Mill, welding shop
Batteries	Large and small vehicle	4	Pump house
Bentonite pellets	Buckets	2 full	Pump house
Propoane tanks	20 lb tank	4 empty	NW dump
Lime	Tanker truck	Empty	Behind Mill

FIGURES

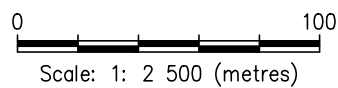
Figure 1	Site Plan; Mill Area
Figure 2	Warehouse – First Floor
Figure 3	Warehouse – Second Floor
Figure 4	Reagents Building
Figure 5	Millwright Building
Figure 6	Warehouse – Drive Thru
Figure 7	Guardhouse – First Floor
Figure 8	Guardhouse – Second Floor
Figure 9	Lunch/Millwright rooms - Mill
Figure 10	Upper Office Area – Mill
Figure 11	Assay Lab Area – Mill
Figure 12	Control Area – Mill
Figure 13	Methyl Isobutyl Carbinol Storage
Figure 14	Northwest Dump
Figure 15	Scrap Metal Laydown Yard



Building Number	Building Name	Square Meters
1	Warehouse	8400
2	Millwright Building	990
3	Fluid Storage Building	120
4	Mill Building	13850
5	Small Warehouse	380
6	Reagents Building	950
7	Crusher Building	340
8	Fine Ore Building	800
9	Guard House	320
10	2 Atco Trailers (Change rooms and lunch room)	250
11	Ore Loadout Building	50

LEGEND:

- ① - BUILDING DESIGNATION
- ⬜ - INDICATES BUILDINGS NOT CURRENTLY ON SITE



CLIENT



HAZARDOUS WASTE CLASSIFICATION
FARO MINE SITE - FARO, YUKON

SITE PLAN

PROJECT NO. W23101482	DWN CB	CKD SGD	REV 0
OFFICE EBA-WHSE	DATE November 16, 2011		

Figure 1



NOTE
THIS DRAWING IS NOT TO SCALE

LEGEND:

- (A) (L) - SAMPLE POINT LOCATION
- (L) - LEAD-BASED PAINT SAMPLE LOCATION
- (A) - ASBESTOS-CONTAINING SAMPLE LOCATION
- OH - OVERHEAD DOOR
- - MEZZANINE AREA
- ↕ - STAIRWELL

CLIENT



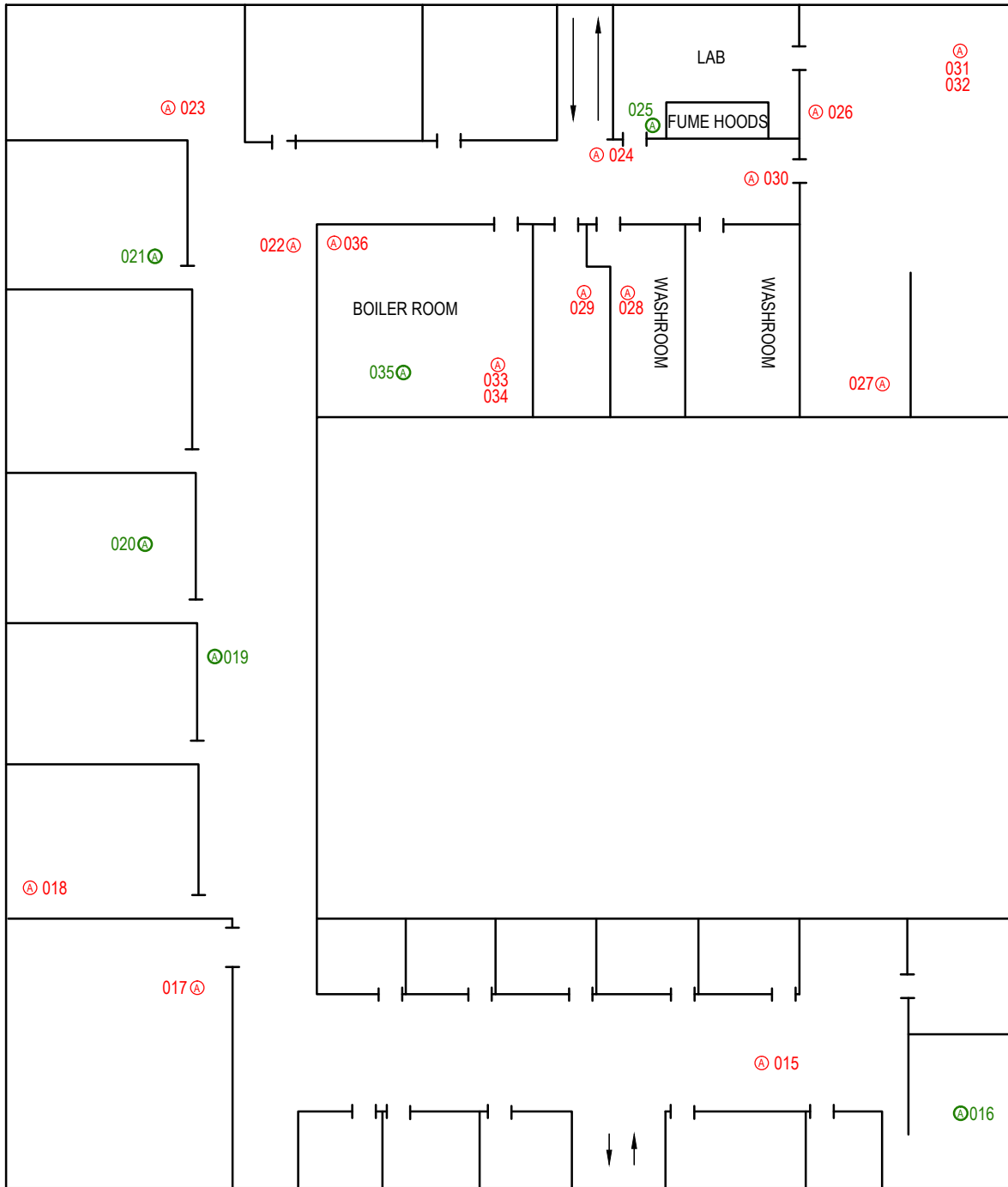
HAZARDOUS WASTE CLASSIFICATION
FARO MINE SITE - FARO, YUKON

WAREHOUSE - FIRST FLOOR

PROJECT NO. W23101482	DWN CB	CKD SGD	REV 0
OFFICE EBA-WHSE	DATE December 1, 2011		

Figure 2

C:\Whitehorse\Drawings\Farol\W23101482\Faro Mine Site Hazardous Waste Classification\W23101482 Fig.2_R0.dwg [FIGURE 2] December 05, 2011 - 8:28:39 am (BY: BUCHAN, CAMERON)



NOTE

THIS DRAWING IS NOT TO SCALE

LEGEND:

- Ⓐ - SAMPLE POINT LOCATION
- Ⓐ - ASBESTOS-CONTAINING SAMPLE LOCATION
- STAIRWELL

CLIENT

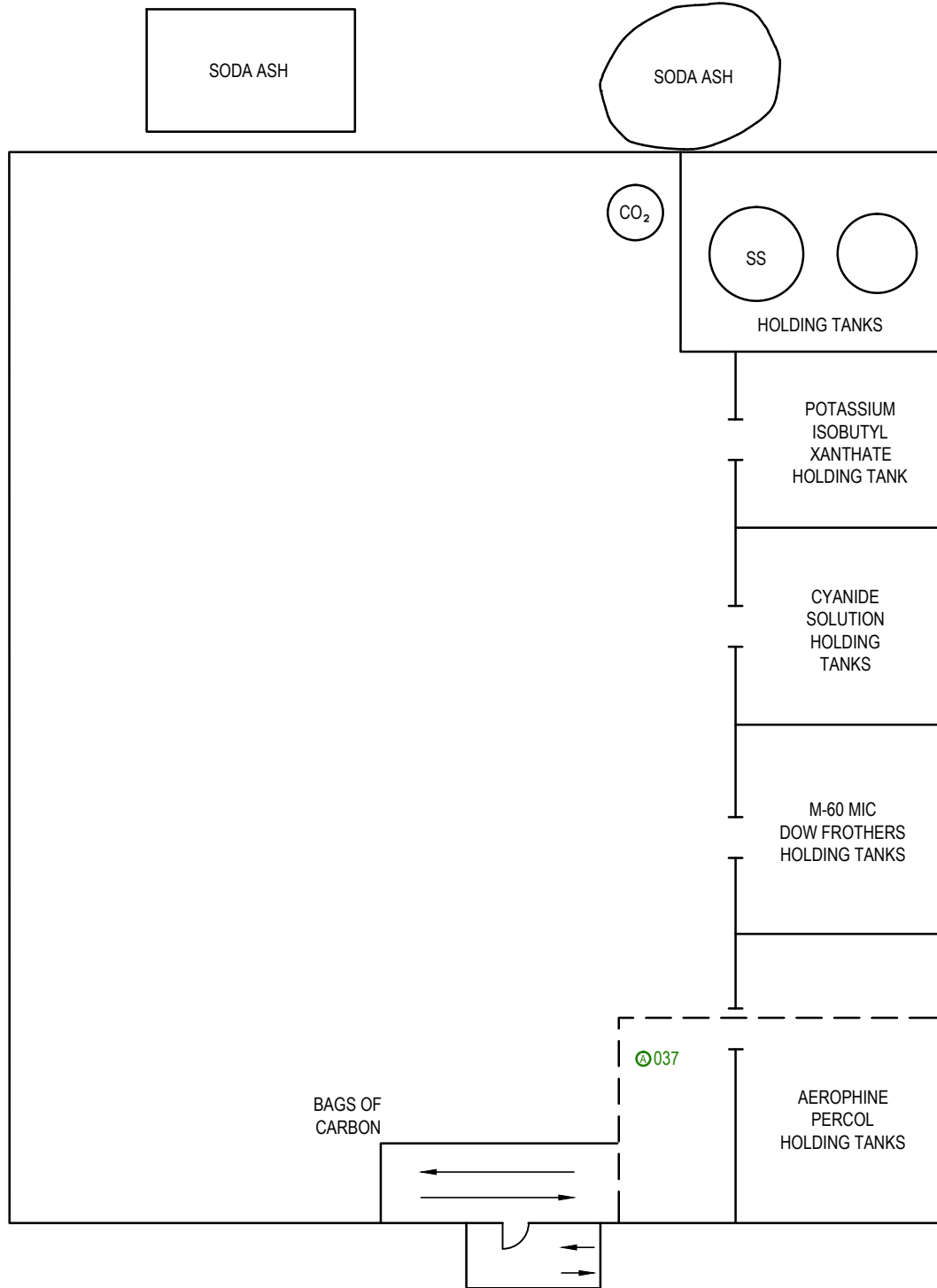


**HAZARDOUS WASTE CLASSIFICATION
FARO MINE SITE - FARO, YUKON**

WAREHOUSE - SECOND FLOOR

PROJECT NO. W23101482	DWN CB	CKD SGD	REV 0
OFFICE EBA-WHSE	DATE December 1, 2011		

Figure 3



NOTE
THIS DRAWING IS NOT TO SCALE

- LEGEND:**
- A - SAMPLE POINT LOCATION
 - - - - - MEZZANINE AREA
 - ← → - STAIRWELL
 - SS - SODIUM SULPHATE

CLIENT

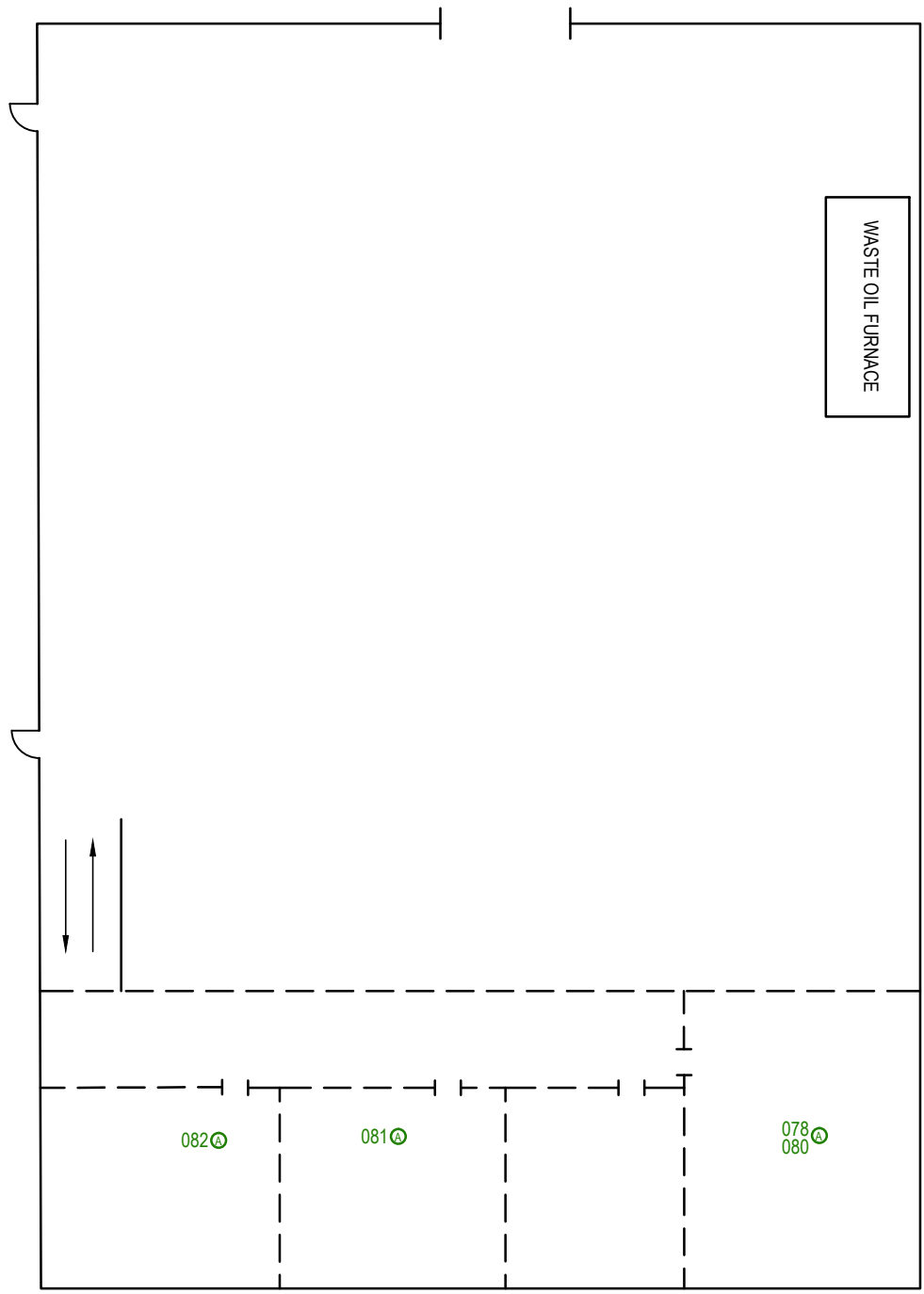


**HAZARDOUS WASTE CLASSIFICATION
FARO MINE SITE - FARO, YUKON**

REAGENTS BUILDING

PROJECT NO. W23101482	DWN CB	CKD SGD	REV 0
OFFICE EBA-WHSE	DATE December 1, 2011		

Figure 4



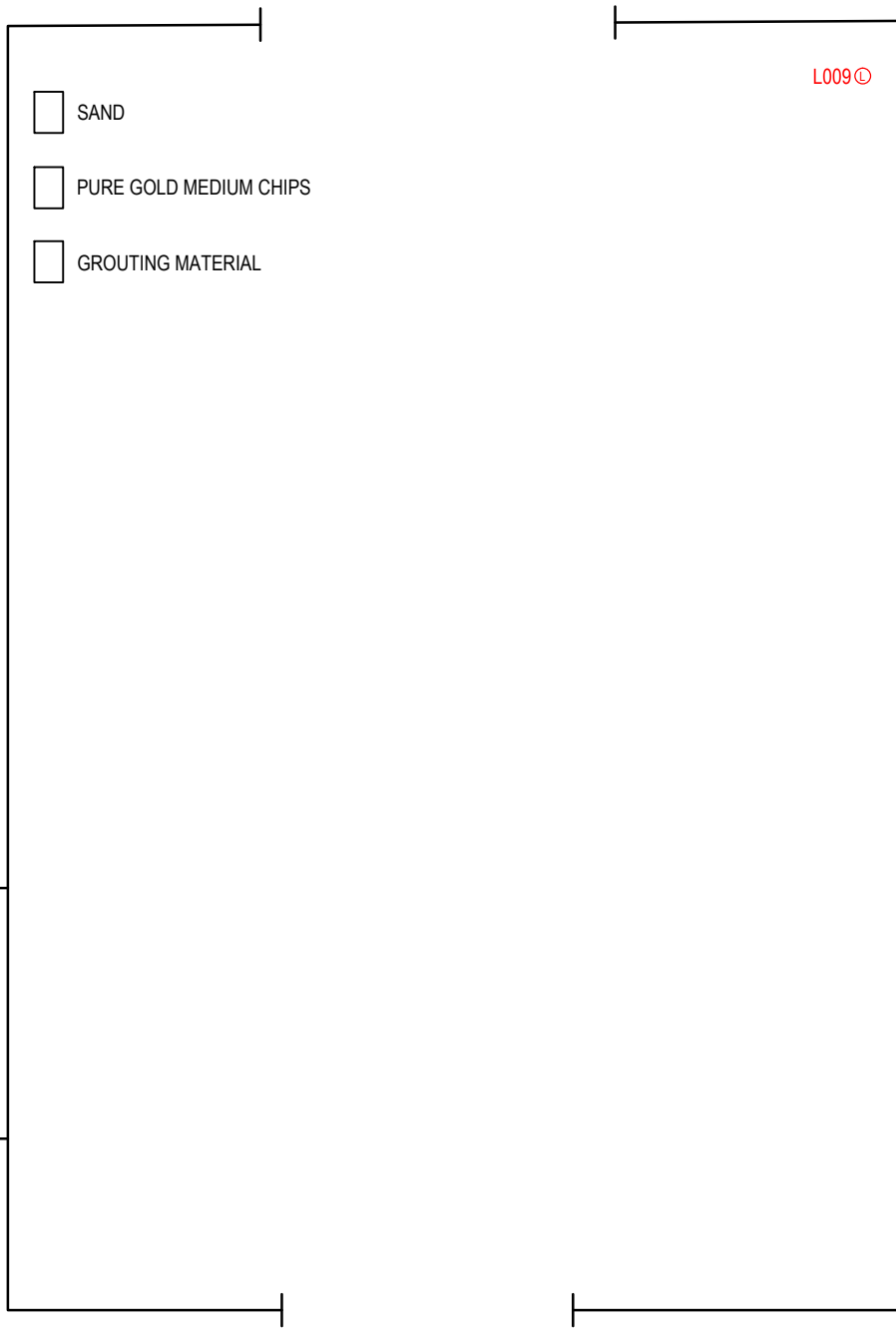
NOTE
THIS DRAWING IS NOT TO SCALE

- LEGEND:**
- A - SAMPLE POINT LOCATION
 - - - - - MEZZANINE AREA
 - ↕ ↕ - STAIRWELL



HAZARDOUS WASTE CLASSIFICATION FARO MINE SITE - FARO, YUKON				
MILLWRIGHT BUILDING				
PROJECT NO. W23101482	DWN CB	CKD SGD	REV 0	Figure 5
OFFICE EBA-WHSE	DATE December 1, 2011			

C:\Whitehorse\Drawings\Farol\W23101482\Faro Mine Site Hazardous Waste Classification\W23101482_Fig.2_RO.dwg [FIGURE 5] December 05, 2011 - 8:29:27 am (BY: BUCHAN, CAMERON)



L009

- SAND
- PURE GOLD MEDIUM CHIPS
- GROUTING MATERIAL

WOOD AND METAL DEBRIS

NOTE
THIS DRAWING IS NOT TO SCALE

LEGEND:
① - LEAD-BASED PAINT SAMPLE LOCATION

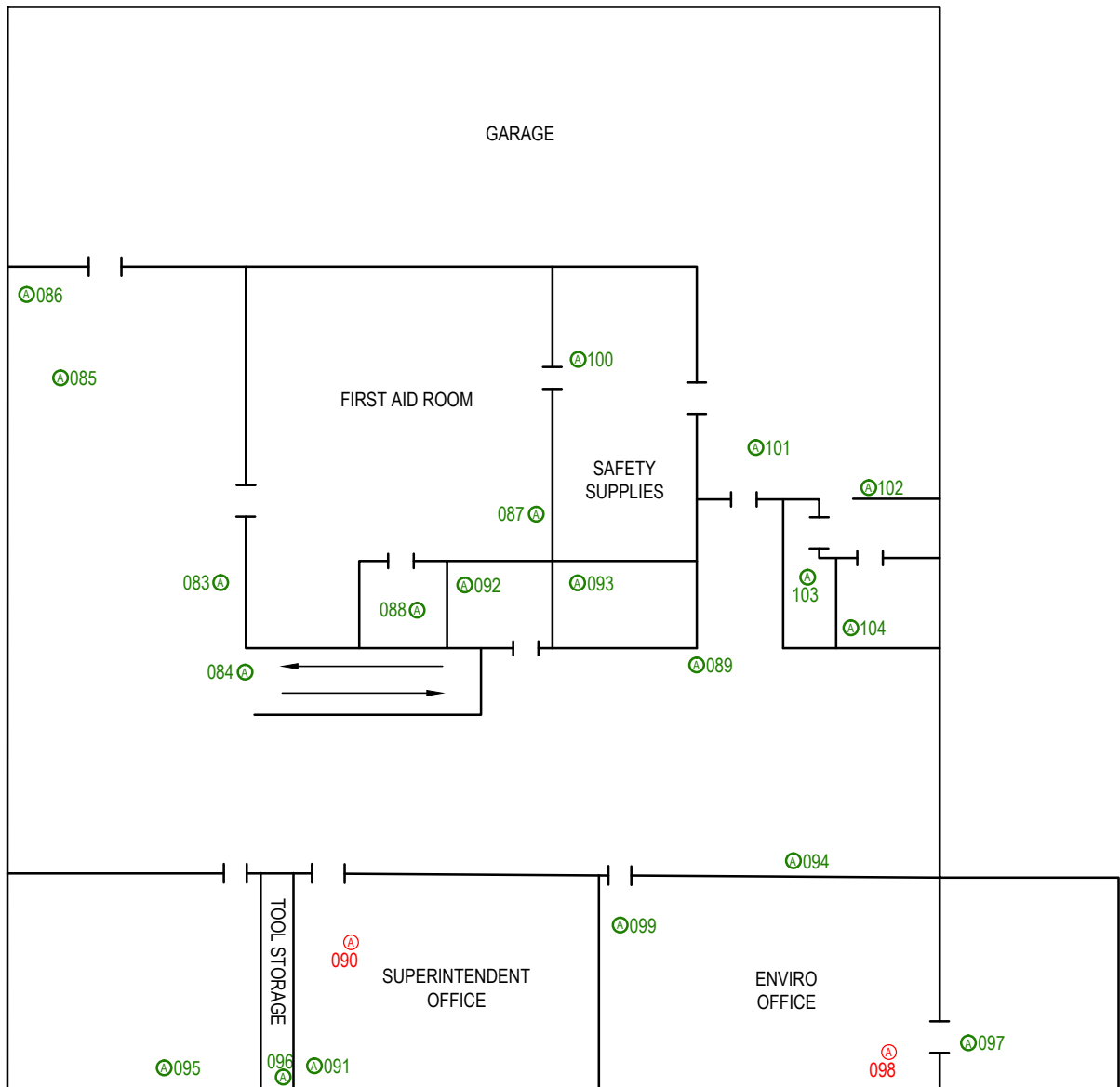


HAZARDOUS WASTE CLASSIFICATION
FARO MINE SITE - FARO, YUKON

WAREHOUSE - DRIVE THRU

PROJECT NO. W23101482	DWN CB	CKD SGD	REV 0
OFFICE EBA-WHSE	DATE December 1, 2011		

Figure 6



NOTE
THIS DRAWING IS NOT TO SCALE

LEGEND:

- Ⓐ - SAMPLE POINT LOCATION
- Ⓐ - ASBESTOS-CONTAINING SAMPLE LOCATION
- STAIRWELL

CLIENT

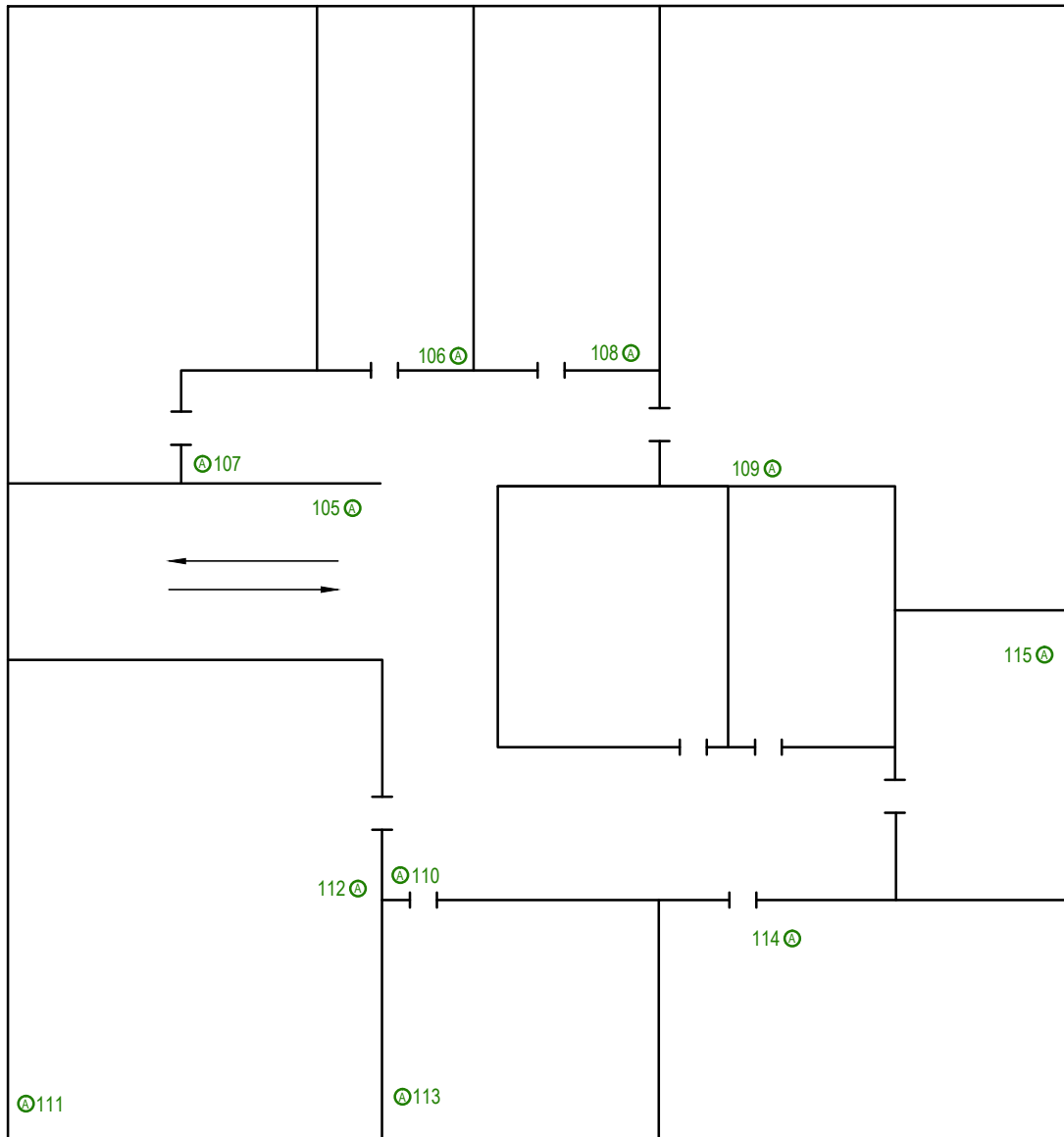


**HAZARDOUS WASTE CLASSIFICATION
FARO MINE SITE - FARO, YUKON**

GUARDHOUSE - FIRST FLOOR

PROJECT NO. W23101482	DWN CB	CKD SGD	REV 0
OFFICE EBA-WHSE	DATE December 1, 2011		

Figure 7



NOTE

THIS DRAWING IS NOT TO SCALE

LEGEND:

(A) - SAMPLE POINT LOCATION

CLIENT

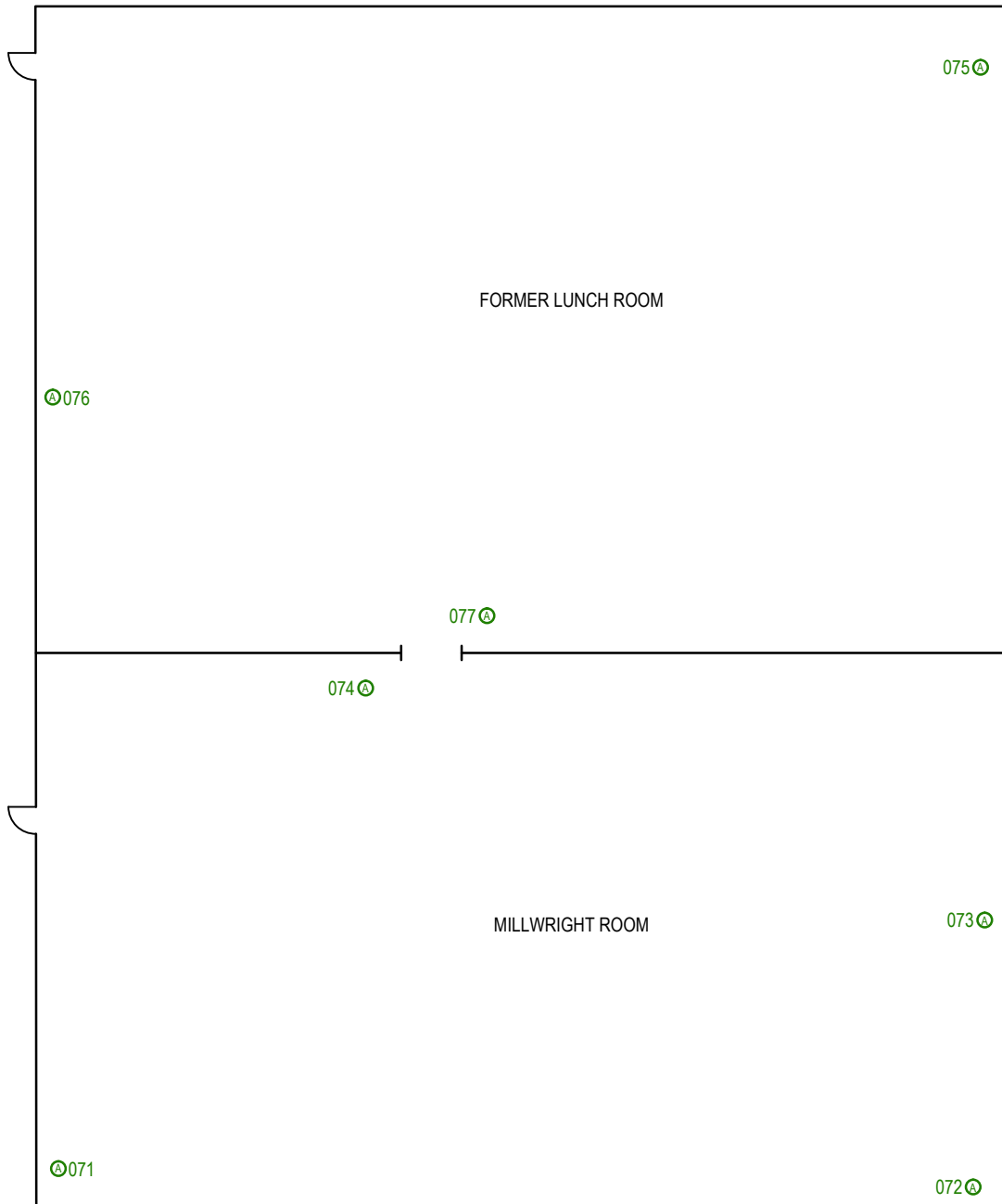


**HAZARDOUS WASTE CLASSIFICATION
FARO MINE SITE - FARO, YUKON**

GUARDHOUSE - SECOND FLOOR

PROJECT NO. W23101482	DWN CB	CKD SGD	REV 0
OFFICE EBA-WHSE	DATE December 1, 2011		

Figure 8



NOTE

THIS DRAWING IS NOT TO SCALE

LEGEND:

(A) - SAMPLE POINT LOCATION

CLIENT

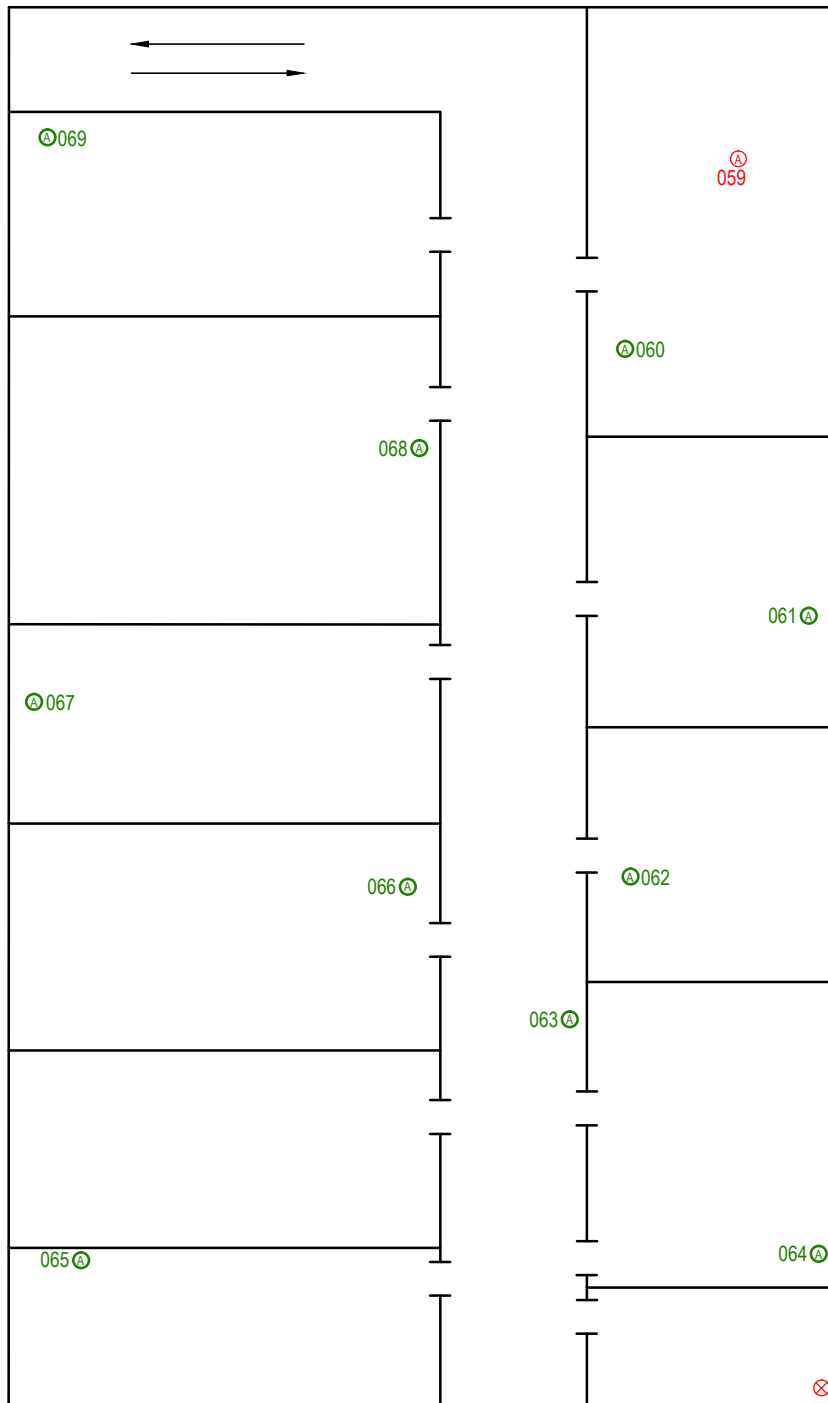


**HAZARDOUS WASTE CLASSIFICATION
FARO MINE SITE - FARO, YUKON**

LUNCH / MILLWRIGHT ROOMS - MILL

PROJECT NO. W23101482	DWN CB	CKD SGD	REV 0
OFFICE EBA-WHSE	DATE December 1, 2011		

Figure 9



NOTE

THIS DRAWING IS NOT TO SCALE

LEGEND:

- Ⓐ - SAMPLE POINT LOCATION
- Ⓐ - ASBESTOS-CONTAINING SAMPLE LOCATION
- ⊗ - TRANSITE CEMENT RAIN WATER LEADERS
- STAIRWELL

CLIENT

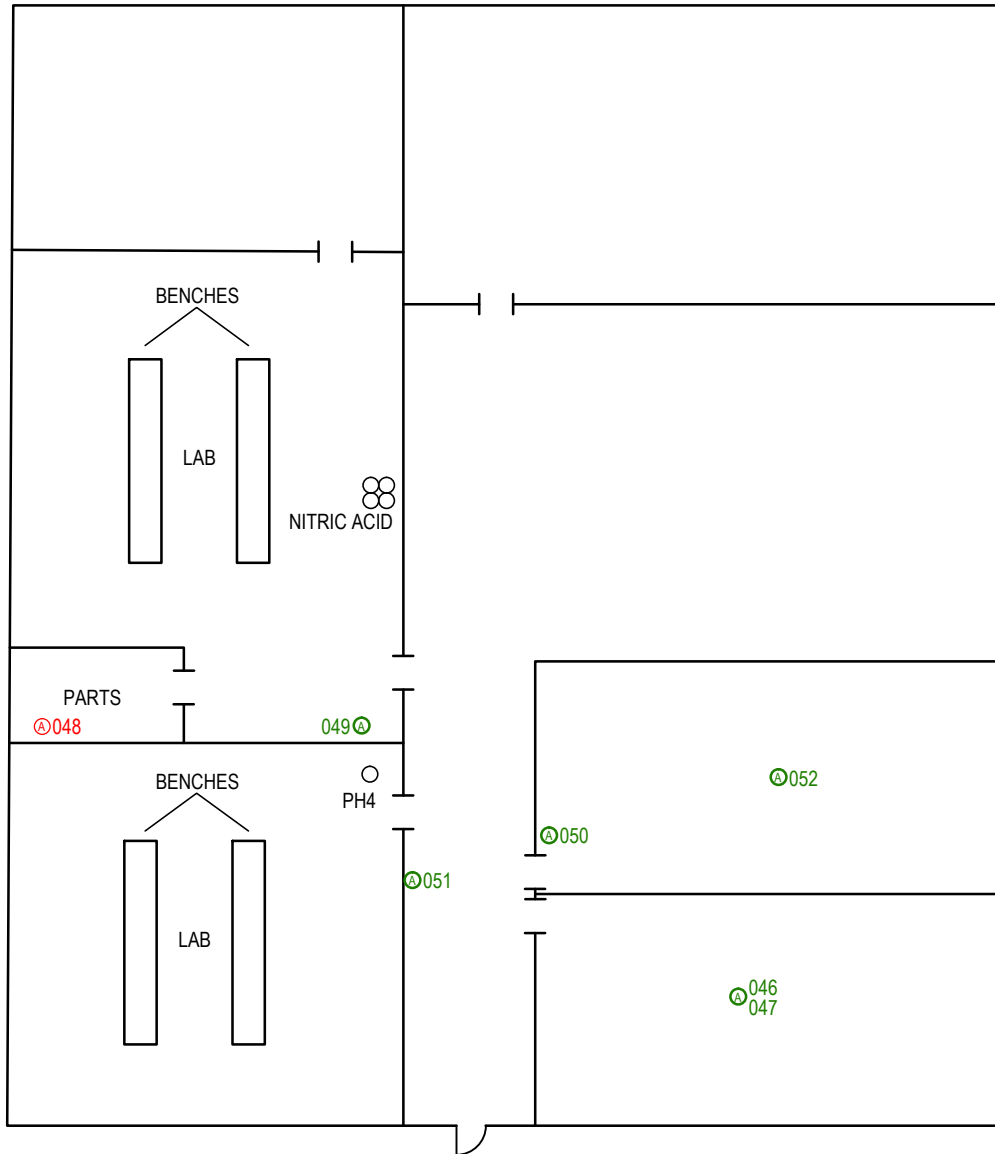


**HAZARDOUS WASTE CLASSIFICATION
FARO MINE SITE - FARO, YUKON**

UPPER OFFICE AREA - MILL WEST END

PROJECT NO. W23101482	DWN CB	CKD SGD	REV 0
OFFICE EBA-WHSE	DATE December 1, 2011		

Figure 10



NOTE
THIS DRAWING IS NOT TO SCALE

- LEGEND:
- Ⓐ - SAMPLE POINT LOCATION
 - Ⓐ - ASBESTOS-CONTAINING SAMPLE LOCATION

CLIENT

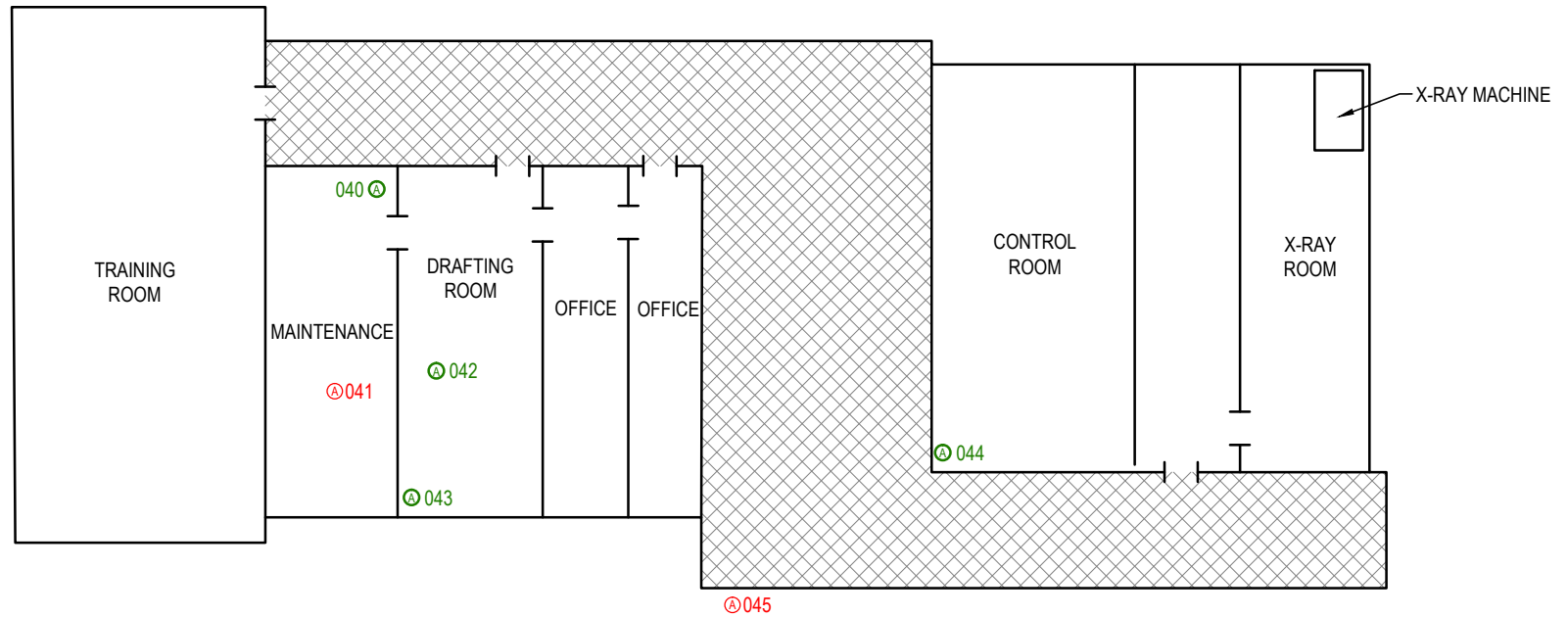


**HAZARDOUS WASTE CLASSIFICATION
FARO MINE SITE - FARO, YUKON**

ASSAY LAB AREA - MILL

PROJECT NO. W23101482	DWN CB	CKD SGD	REV 0
OFFICE EBA-WHSE	DATE December 1, 2011		

Figure 11



NOTE
THIS DRAWING IS NOT TO SCALE

- LEGEND:**
- Ⓐ - SAMPLE POINT LOCATION
 - Ⓐ - ASBESTOS-CONTAINING SAMPLE LOCATION
 - CAT WALK

CLIENT



**HAZARDOUS WASTE CLASSIFICATION
FARO MINE SITE - FARO, YUKON**

MILL BUILDING CONTROL AREA

PROJECT NO. W23101482	DWN CB	CKD SGD	REV 0
OFFICE EBA-WHSE	DATE December 1, 2011		

Figure 12



LEGEND:

 - AREA OF APPROXIMATELY 225 METHYL ISOBUTYL CARBONAL 45 gal. DRUMS



Scale: 1: 2 500 (metres)

CLIENT



**HAZARDOUS WASTE CLASSIFICATION
FARO MINE SITE - FARO, YUKON**



METHYL ISOBUTYL CARBONAL STORAGE

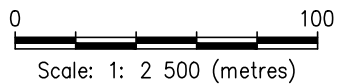
PROJECT NO. W23101482	DWN CB	CKD SGD	REV 0
OFFICE EBA-WHSE	DATE November 28, 2011		

Figure 13



LEGEND:

-  - AREA OF TIRE STORAGE
-  - APPROXIMATE AREA KNOWN AS NORTH WEST DUMP USED AS WASTE OIL STORAGE



CLIENT



**HAZARDOUS WASTE CLASSIFICATION
FARO MINE SITE - FARO, YUKON**

NORTHWEST DUMP

PROJECT NO. W23101482	DWN CB	CKD SGD	REV 0	Figure 14
OFFICE EBA-WHSE	DATE November 28, 2011			



LEGEND:
 [---] - AREA OF VARIOUS TYPES OF SCRAP METAL, MACHINE PARTS AND ABANDONED VEHICLES

0 100
 Scale: 1: 2 500 (metres)

CLIENT



**HAZARDOUS WASTE CLASSIFICATION
 FARO MINE SITE - FARO, YUKON**

SCRAP METAL LAYDOWN YARD

PROJECT NO. W23101482	DWN CB	CKD SGD	REV 0
OFFICE EBA-WHSE	DATE November 28, 2011		

Figure 15

APPENDIX A

APPENDIX A EBA GENERAL CONDITIONS

GENERAL CONDITIONS

GEO-ENVIRONMENTAL REPORT

This report incorporates and is subject to these “General Conditions”.

1.0 USE OF REPORT AND OWNERSHIP

This report pertains to a specific site, a specific development, and a specific scope of work. It is not applicable to any other sites, nor should it be relied upon for types of development other than those to which it refers. Any variation from the site or proposed development would necessitate a supplementary investigation and assessment.

This report and the assessments and recommendations contained in it are intended for the sole use of EBA's client. EBA does not accept any responsibility for the accuracy of any of the data, the analysis or the recommendations contained or referenced in the report when the report is used or relied upon by any party other than EBA's Client unless otherwise authorized in writing by EBA. Any unauthorized use of the report is at the sole risk of the user.

This report is subject to copyright and shall not be reproduced either wholly or in part without the prior, written permission of EBA. Additional copies of the report, if required, may be obtained upon request.

2.0 ALTERNATE REPORT FORMAT

Where EBA submits both electronic file and hard copy versions of reports, drawings and other project-related documents and deliverables (collectively termed EBA's instruments of professional service), only the signed and/or sealed versions shall be considered final and legally binding. The original signed and/or sealed version archived by EBA shall be deemed to be the original for the Project.

Both electronic file and hard copy versions of EBA's instruments of professional service shall not, under any circumstances, no matter who owns or uses them, be altered by any party except EBA. The Client warrants that EBA's instruments of professional service will be used only and exactly as submitted by EBA.

Electronic files submitted by EBA have been prepared and submitted using specific software and hardware systems. EBA makes no representation about the compatibility of these files with the Client's current or future software and hardware systems.

3.0 NOTIFICATION OF AUTHORITIES

In certain instances, the discovery of hazardous substances or conditions and materials may require that regulatory agencies and other persons be informed and the client agrees that notification to such bodies or persons as required may be done by EBA in its reasonably exercised discretion.

4.0 INFORMATION PROVIDED TO EBA BY OTHERS

During the performance of the work and the preparation of the report, EBA may rely on information provided by persons other than the Client. While EBA endeavours to verify the accuracy of such information when instructed to do so by the Client, EBA accepts no responsibility for the accuracy or the reliability of such information which may affect the report.

APPENDIX B

APPENDIX B PHOTOGRAPHIC DOCUMENTATION



Photo 1: Main Warehouse Building looking east



Photo 2: Fluid storage building containing three large AST's looking north



Photo 3: Mill Building looking north



Photo 4: Small warehouse looking east



Photo 5: Reagents building looking east



Photo 6: Crusher building looking south



Photo 7: Fine ore building looking east



Photo 8: Guard house looking south



Photo 9: Mould impacted drywall and asbestos containing pipe insulation within the 2nd floor boiler room of the Warehouse



Photo 10: Asbestos containing pipe insulation on the elbows and straight runs in the room adjacent to the 2nd floor former laboratory in the Warehouse



Photo 11: Asbestos containing 12"x12" beige vinyl floor tile located throughout the second floor of the Warehouse and main floor office off the lab.



Photo 12: Asbestos containing 12"x12" beige vinyl floor tile located in the main floor office off the lab. Visible mould impacts along the drywall.



Photo 13: Asbestos containing transite cement board associated with the cupboards and fume hood in the 2nd floor lab of the warehouse



Photo 14: Asbestos containing pipe insulation within the Mill



Photo 15: Asbestos containing pipe insulation associated with a boiler in the mill



Photo 16: Asbestos contaminated vermiculite used as packaging within the Machine Shop of the Mill.



Photo 17: Asbestos containing pump packaging located in the Machine Shop of the Mill . The packaging is believed to be used on numerous machines within the Mill requiring gaskets.



Photo 18: Asbestos containing transite rain water leader's located in a western stairwell off the office area of the Mill.



Photo 19: Asbestos containing transite cement board used as electrical components within the Mill



Photo 20: Red lead based paint requiring regulated disposal applied to the overhead doors of the Warehouse.



Photo 21: Grey lead based paint requiring regulated disposal located in the welding shop of the Warehouse.



Photo 22: Blue lead based paint requiring regulated disposal applied to various surfaces within the storage area of the mill.



Photo 23: Ceiling mounted high pressure sodium light housing a PCB-containing light ballast.



Photo 24: Transformer 25741 sampled for PCB content in cooling oil. Additional transformers in storage were listed as not containing insulating oil.



Photo 25: Transformers adjacent to the electrical yard behind the Mill stating PCB containing insulated oil.



Photo 26: Wall mounted mercury containing thermostat.



Photo 27: Stock piled barrels, mostly empty in the North West dump area. Blue barrels located in the back of the picture contain waste oil.



Photo 28: North West dump where waste oil barrels were stored. Select barrels were full while many contained residue.



Photo 29: Hydrocarbon tanks located at the south end of the Mill



Photo 30: Hydrocarbon tanks located at the south end of the Mill



Photo 31: Stock pile of drums containing Methyl Isobutyl Carbinol



Photo 32: Methyl Isobutyl Carbinol labeled drum in stock pile



Photo 33: Stock piled batteries and heavy duty motor oil in 250 L drums within the Warehouse



Photo 34: Metal/wood debris, machine parts and an abandoned fire truck to the north of the small warehouse



Photo 35: Machinery located to the north of the Warehouse



Photo 36: Metal debris to the north of the Mill area on the way to the North West dump, looking north



Photo 37: Metal debris, machine parts, an Atco trailer and hydrocarbons within tanks located to the north of the Mill area, photo looking north east.



Photo 38: Used tire storage looking North West, located to the north of the NW dump.

APPENDIX C

APPENDIX C ASBESTOS CONTAINING MATERIALS (ANALYTICAL CERTIFICATES)

Wes-Har Asbestos Analysis & Consulting Ltd.

Bulk Asbestos Report

For EBA Engineering Cons. Ltd. [Yukon]

Unit 6, 151 Industrial Road
Whitehorse, YT Canada V1A 2V3

Location : Faro Mine Site [W23101482]

Project : W23101482

11040	23101482	Sample Location / Description	Result(s)	Analyzed	Analyst ACM
1	001	DWJC, Warehouse Lunch Room	Asbestos Fibres Not Detected 95 -100 % Non-fibrous	Nov 16 2011	GN ---
2	002	DWJC, Warehouse Lunch Room	Asbestos Fibres Not Detected 95 -100 % Non-fibrous	Nov 16 2011	GN ---
3	003	DWJC, Warehouse Lunch Room	Asbestos Fibres Not Detected 95 -100 % Non-fibrous	Nov 16 2011	GN ---
4	004	3x2 Ceiling Tile, Warehouse Lunch Room * Sample Subjected To An Ashing Procedure	Asbestos Fibres Not Detected 95 -100 % Cellulose Fibres Less Than 1 % Fibrous Glass > 1 % Non-fibrous	Nov 16 2011	GN ---
5	005	3x2 Ceiling Tile, Warehouse Office * Sample Subjected To An Ashing Procedure	Asbestos Fibres Not Detected 20 - 30 % Cellulose Fibres 20 - 30 % Fibrous Glass DNQ Perlite > 40 % Non-fibrous	Nov 16 2011	GN ---
6 . 1	006	Sheet Flooring, Lunch Room Layer 1 Light Grey * Layer Subjected To An Ashing And Acid Washing Procedure	Asbestos Fibres Not Detected 95 -100 % Non-fibrous	Nov 16 2011	GN --- LP 95 %
6 . 2	006	Sheet Flooring, Lunch Room Layer 2 Yellow Mastic Patchess * Asbestos Appears to be Residue [Not Homogeneous]; Layer Was Ashed	1 - 5 % Chrysotile Asbestos > 95 % Non-fibrous	Nov 16 2011	GN .T. LP 5 %
7 . 1	007	DWJC, Office Above Welding Shop Layer 1 White / Coating	Asbestos Fibres Not Detected 95 -100 % Non-fibrous	Nov 16 2011	GN --- LP 99 %
7 . 2	007	DWJC, Office Above Welding Shop Layer 2 Beige Fibrous Patch	Asbestos Fibres Not Detected 95 -100 % Cellulose Fibres > 1 % Non-fibrous	Nov 16 2011	GN --- LP 1 %
8 . 1	008	12x12 Beige VFT, Office Above Welding Shop Layer 1 Cream * Layer Subjected To An Ashing And Acid Washing Procedure	Asbestos Fibres Not Detected 95 -100 % Non-fibrous	Nov 16 2011	GN --- LP 95 %

Lab File 11040
Client Id : 23101482

Unit 170 2188 No. 5 Road Richmond British Columbia V6X 2T1 (604) - 279 - 9445

American Industrial Hygiene Association BAPAT Lab. Id. No. 149340

Client Reference Id: W23101482

Wes-Har

Asbestos Analysis & Consulting Ltd.

Bulk Asbestos Report

For EBA Engineering Cons. Ltd. [Yukon]

Location : Faro Mine Site [W23101482]

Project : W23101482

11040	23101482	Sample Location / Description	Result(s)	Analyzed	Analyst ACM
8 . 2	008	12x12 Beige VFT, Office Above Welding Shop Layer 2 Yellow Mastic Patches	Asbestos Fibres Not Detected 95 -100 % Non-fibrous	Nov 16 2011	GN ---
		* Layer Subjected To An Ashing Procedure		LP	5 %
9 . 1	009	12x12 Grey VFT, Warehouses Layer 1 Light Grey	1 - 5 % Chrysotile Asbestos > 95 % Non-fibrous	Nov 16 2011	GN .T.
		* Layer Subjected To An Ashing And Acid Washing Procedure		LP	90 %
9 . 2	009	12x12 Grey VFT, Warehouses Layer 2 Black Mastic Patches	Asbestos Fibres Not Detected 95 -100 % Non-fibrous	Nov 16 2011	GN ---
		* Layer Subjected To An Ashing Procedure		LP	10 %
10 . 1	010	Mudded Pipe Insulation, Warehouse	Asbestos Fibres Not Detected 50 - 60 % Fibrous Glass > 40 % Non-fibrous	Nov 16 2011	GN ---
		*		LP	0 %
11 . 1	011	DWJC, Main Floor Lunch Room Layer 1 White Patch / Coating	Asbestos Fibres Not Detected 95 -100 % Non-fibrous	Nov 16 2011	GN ---
				LP	1 %
11 . 2	011	DWJC, Main Floor Lunch Room Layer 2 White / Coating	Asbestos Fibres Not Detected 95 -100 % Non-fibrous	Nov 16 2011	GN ---
				LP	99 %
12	012	DWJC, Office Off 1st Floor Lab	Asbestos Fibres Not Detected 95 -100 % Non-fibrous	Nov 16 2011	GN ---
13	013	DWJC, Office Off 1st Floor Lab	Asbestos Fibres Not Detected 95 -100 % Non-fibrous	Nov 16 2011	GN ---
14	014	3x2 White Stippled Ceiling Tile, Outside Lab	1 - 5 % Amosite Asbestos 60 - 70 % Fibrous Glass 5 - 10 % Cellulose Fibres > 15 % Non-fibrous	Nov 16 2011	GN .T.
		* Sample Subjected To An Ashing Procedure			
15 . 1	015	12x12 VFT, Warehouse 2nd Floor Hallway Layer 1 Beige	1 - 5 % Chrysotile Asbestos > 95 % Non-fibrous	Nov 16 2011	GN .T.
		* Sample [Composite] Subjected To An Ashing Procedure		LP	98 %

Wes-Har

Asbestos Analysis & Consulting Ltd.

Bulk Asbestos Report

For EBA Engineering Cons. Ltd. [Yukon]

Location : Faro Mine Site [W23101482]

Project : W23101482

11040	23101482	Sample Location / Description	Result(s)	Analyzed	Analyst ACM
15 . 2	015	12x12 VFT, Warehouse 2nd Floor Hallway Layer 2 Black Mastic Patches	Asbestos Fibres Not Detected 95 -100 % Non-fibrous	Nov 16 2011	GN --- LP 2 %
16	016	3x2 White w/Black Ceiling Tile, 2nd Floor Office * Sample Subjected To An Ashing Procedure	Asbestos Fibres Not Detected 20 - 30 % Cellulose Fibres 20 - 30 % Fibrous Glass DNQ Perlite > 40 % Non-fibrous	Nov 16 2011	GN ---
17 . 1	017	Grey Pattern Lino, 2nd Floor Office Layer 1 Light Grey Patterned * Sample [Composite] Subjected To An Ashing Procedure	Asbestos Fibres Not Detected 95 -100 % Non-fibrous	Nov 16 2011	GN --- LP 60 %
17 . 2	017	Grey Pattern Lino, 2nd Floor Office Layer 2 Grey Fibrous	85 - 90 % Chrysotile Asbestos 1 - 5 % Cellulose Fibres > 5 % Non-fibrous	Nov 16 2011	GN .T. LP 38 %
17 . 3	017	Grey Pattern Lino, 2nd Floor Office Layer 3 Yellow Mastic Patches	Asbestos Fibres Not Detected 95 -100 % Non-fibrous	Nov 16 2011	GN --- LP 2 %
18 . 1	018	DWJC, Warehouse Storage Rm # 34 Layer 1 Light Beige-Grey / Coating * Layer Subjected To An Ashing Procedure	1 - 5 % Chrysotile Asbestos > 95 % Non-fibrous	Nov 16 2011	GN .T. LP 20 %
18 . 2	018	DWJC, Warehouse Storage Rm # 34 Layer 2 Cream Fibrous	Asbestos Fibres Not Detected 95 -100 % Cellulose Fibres > 1 % Non-fibrous	Nov 16 2011	GN --- LP 20 %
18 . 3	018	DWJC, Warehouse Storage Rm # 34 Layer 3 Light Beige-Grey * Layer Subjected To An Ashing Procedure	1 - 5 % Chrysotile Asbestos > 95 % Non-fibrous	Nov 16 2011	GN .T. LP 25 %
18 . 4	018	DWJC, Warehouse Storage Rm # 34 Layer 4 Cream Brown Fibrous	Asbestos Fibres Not Detected 95 -100 % Cellulose Fibres > 1 % Non-fibrous	Nov 16 2011	GN --- LP 30 %

Wes-Har

Asbestos Analysis & Consulting Ltd.

Bulk Asbestos Report

For EBA Engineering Cons. Ltd. [Yukon]

Location : Faro Mine Site [W23101482]

Project : W23101482

11040	23101482	Sample Location / Description	Result(s)	Analyzed	Analyst ACM
18 . 5	018	DWJC, Warehouse Storage Rm # 34 Layer 5 Light Grey Patches	Asbestos Fibres Not Detected 1 - 5 % Fibrous Glass DNQ Micaceous Material > 95 % Non-fibrous	Nov 16 2011	GN --- LP 5 %
19 . 1	019	DWJC, Warehouse 2nd Floor Hallway Layer 1 White	Asbestos Fibres Not Detected 95 -100 % Non-fibrous	Nov 16 2011	GN --- LP 5 %
19 . 2	019	DWJC, Warehouse 2nd Floor Hallway Layer 2 Brown Fibrous / Coating	Asbestos Fibres Not Detected 85 - 90 % Cellulose Fibres > 10 % Non-fibrous	Nov 16 2011	GN --- LP 90 %
19 . 3	019	DWJC, Warehouse 2nd Floor Hallway Layer 3 Light Grey Patches	Asbestos Fibres Not Detected 1 - 5 % Fibrous Glass DNQ Micaceous Material > 95 % Non-fibrous	Nov 16 2011	GN --- LP 5 %
20	020	DWJC, Warehouse Mens Washroom	Asbestos Fibres Not Detected 95 -100 % Non-fibrous	Nov 16 2011	GN ---
21 . 1	021	DWJC, Warehouse Office #22 Layer 1 White / Coating	Asbestos Fibres Not Detected 95 -100 % Non-fibrous	Nov 16 2011	GN --- LP 70 %
21 . 2	021	DWJC, Warehouse Office #22 Layer 2 Weave	Asbestos Fibres Not Detected 95 -100 % Fibrous Glass > 1 % Non-fibrous	Nov 16 2011	GN --- LP 10 %
21 . 3	021	DWJC, Warehouse Office #22 Layer 3 Brown Fibrous	Asbestos Fibres Not Detected 95 -100 % Cellulose Fibres > 1 % Non-fibrous	Nov 16 2011	GN --- LP 17 %
21 . 4	021	DWJC, Warehouse Office #22 Layer 4 White Patches	Asbestos Fibres Not Detected 1 - 5 % Cellulose Fibres > 95 % Non-fibrous	Nov 16 2011	GN --- LP 3 %

Wes-Har

Asbestos Analysis & Consulting Ltd.

Bulk Asbestos Report

For EBA Engineering Cons. Ltd. [Yukon]

Location : Faro Mine Site [W23101482]

Project : W23101482

11040	23101482	Sample Location / Description	Result(s)	Analyzed	Analyst ACM
22	022	DWJC, Warehouse Main Hallway	1 - 5 % Chrysotile Asbestos > 95 % Non-fibrous	Nov 16 2011	GN .T.
23 . 1	023	DWJC, Warehouse Office in Corner Layer 1 Light Grey-Brown / Coating	1 - 5 % Chrysotile Asbestos > 95 % Non-fibrous	Nov 16 2011	GN .T. LP 60 %
23 . 2	023	DWJC, Warehouse Office in Corner Layer 2 Cream Fibrous	Asbestos Fibres Not Detected 95 -100 % Cellulose Fibres > 1 % Non-fibrous	Nov 16 2011	GN --- LP 20 %
23 . 3	023	DWJC, Warehouse Office in Corner Layer 3 Light Grey-Brown Patches	1 - 5 % Chrysotile Asbestos > 95 % Non-fibrous	Nov 16 2011	GN .T. LP 20 %
24 . 1	024	DWJC, Warehouse Hallway @ Top of Stairs Layer 1 Light Grey-Brown / Coating	1 - 5 % Chrysotile Asbestos > 95 % Non-fibrous	Nov 16 2011	GN .T. LP 80 %
24 . 2	024	DWJC, Warehouse Hallway @ Top of Stairs Layer 2 Cream Fibrous	Asbestos Fibres Not Detected 95 -100 % Cellulose Fibres > 1 % Non-fibrous	Nov 16 2011	GN --- LP 20 %
25 . 1	025	DWJC, Warehouse 2nd Floor Lab Layer 1 White Patch / Coating	Asbestos Fibres Not Detected 95 -100 % Non-fibrous	Nov 16 2011	GN --- LP 1 %
25 . 2	025	DWJC, Warehouse 2nd Floor Lab Layer 2 Cream Fibrous / Coating	Asbestos Fibres Not Detected 80 - 85 % Cellulose Fibres > 15 % Non-fibrous	Nov 16 2011	GN --- LP 99 %
26	026	DWJC, Warehouse Storage Off Lab	1 - 5 % Chrysotile Asbestos > 95 % Non-fibrous	Nov 16 2011	GN .T.
27	027	DWJC, Warehouse Janitors Rm	1 - 5 % Chrysotile Asbestos 1 - 5 % Cellulose Fibres > 90 % Non-fibrous	Nov 16 2011	GN .T.

Wes-Har

Asbestos Analysis & Consulting Ltd.

Bulk Asbestos Report

For EBA Engineering Cons. Ltd. [Yukon]

Location : Faro Mine Site [W23101482]

Project : W23101482

11040	23101482	Sample Location / Description	Result(s)	Analyzed	Analyst ACM
28 . 1	028	DWJC, Warehouses 2nd Floor Washroom Layer 1 Light Grey-Brown / Coating	1 - 5 % Chrysotile Asbestos > 30 % Non-fibrous	Nov 16 2011	GN .T. LP 20 %
28 . 2	028	DWJC, Warehouses 2nd Floor Washroom Layer 2 Cream Fibrous	Asbestos Fibres Not Detected 95 -100 % Cellulose Fibres > 1 % Non-fibrous	Nov 16 2011	GN --- LP 25 %
28 . 3	028	DWJC, Warehouses 2nd Floor Washroom Layer 3 Light Grey Brown * Layer Subjected To An Ashing Procedure	1 - 5 % Chrysotile Asbestos > 95 % Non-fibrous	Nov 16 2011	GN .T. LP 25 %
28 . 4	028	DWJC, Warehouses 2nd Floor Washroom Layer 4 Brown Fibrous	Asbestos Fibres Not Detected 95 -100 % Cellulose Fibres > 1 % Non-fibrous	Nov 16 2011	GN --- LP 25 %
28 . 5	028	DWJC, Warehouses 2nd Floor Washroom Layer 5 White Patches	Asbestos Fibres Not Detected 1 - 5 % Fibrous Glass DNQ Micaceous Material > 95 % Non-fibrous	Nov 16 2011	GN --- LP 5 %
29 . 1	029	DWJC, Warehouse Adjacent to Lab Layer 1 Phase 1 Light Grey-Brown / Coating	1 - 5 % Chrysotile Asbestos > 95 % Non-fibrous	Nov 16 2011	GN .T. LP 35 %
29 . 2	029	DWJC, Warehouse Adjacent to Lab Layer 1 Phase 2 White / Coating	Asbestos Fibres Not Detected 95 -100 % Non-fibrous	Nov 16 2011	GN --- LP 35 %
29 . 3	029	DWJC, Warehouse Adjacent to Lab Layer 2 Brown Fibrous	Asbestos Fibres Not Detected 95 -100 % Cellulose Fibres > 1 % Non-fibrous	Nov 16 2011	GN --- LP 20 %
29 . 4	029	DWJC, Warehouse Adjacent to Lab Layer 3 White Patches	Asbestos Fibres Not Detected 1 - 5 % Fibrous Glass DNQ Micaceous Material > 95 % Non-fibrous	Nov 16 2011	GN --- LP 10 %

Wes-Har

Asbestos Analysis & Consulting Ltd.

Bulk Asbestos Report

For EBA Engineering Cons. Ltd. [Yukon]

Location : Faro Mine Site [W23101482]

Project : W23101482

11040	23101482	Sample Location / Description	Result(s)	Analyzed	Analyst ACM
30 . 1	030	12x12 Beige VFT, 2nd Floor Hallway Layer 1 Light Grey * Layer Subjected To An Ashing And Acid Washing Procedure	1 - 5 % Chrysotile Asbestos > 95 % Non-fibrous	Nov 16 2011	GN .T. LP 95 %
30 . 2	030	12x12 Beige VFT, 2nd Floor Hallway Layer 2 Black Mastic Patches * Layer Subjected To An Ashing Procedure	Asbestos Fibres Not Detected 95 -100 % Non-fibrous	Nov 16 2011	GN --- LP 5 %
31	031	Pipe Insulation @ Elbow, Warehouse Adjacent to Lab * Sample Subjected To An Ashing Procedure	50 - 60 % Chrysotile Asbestos 10 - 20 % Amosite Asbestos > 20 % Non-fibrous	Nov 16 2011	GN .T.
32 . 1	032	Pipe Ins On Lagging, Warehouse Adj to Lab Phase 1 Light Grey Fibrous * Sample [Composite] Subjected To An Ashing Procedure	60 - 70 % Amosite Asbestos 10 - 20 % Chrysotile Asbestos > 10 % Non-fibrous	Nov 16 2011	GN .T. LP 80 %
32 . 2	032	Pipe Ins On Lagging, Warehouse Adj to Lab Phase 2 Weave / Coating	Asbestos Fibres Not Detected 80 - 85 % Cellulose Fibres > 15 % Non-fibrous	Nov 16 2011	GN --- LP 20 %
33 . 1	033	Pipe Ins on Lagging, Warehouse Boiler Rm Phase 1 Weave / Coating * Sample [Composite] Subjected To An Ashing Procedure	Asbestos Fibres Not Detected 80 - 85 % Cellulose Fibres > 15 % Non-fibrous	Nov 16 2011	GN --- LP 30 %
33 . 2	033	Pipe Ins on Lagging, Warehouse Boiler Rm Phase 2 Light Grey Fibrous	60 - 70 % Amosite Asbestos 10 - 20 % Chrysotile Asbestos > 10 % Non-fibrous	Nov 16 2011	GN .T. LP 70 %
34 . 1	034	Pipe Insulation @ Elbow, Warehouse Boiler Rm Phase 1 Weave / Coating * Sample [Composite] Subjected To An Ashing Procedure	Asbestos Fibres Not Detected 80 - 85 % Cellulose Fibres > 15 % Non-fibrous	Nov 16 2011	GN --- LP 20 %
34 . 2	034	Pipe Insulation @ Elbow, Warehouse Boiler Rm Phase 2 Light Grey Fibrous	60 - 70 % Chrysotile Asbestos > 10 % Amosite Asbestos > 10 % Non-fibrous	Nov 16 2011	GN .T. LP 80 %

Lab File 11040
Client Id : 23101482

Unit 170 2188 No. 5 Road Richmond British Columbia V6X 2T1 (604) - 279 - 9445

American Industrial Hygiene Association BAPAT Lab. Id. No. 149340

Client Reference Id: W23101482

Wes-Har Asbestos Analysis & Consulting Ltd.

Bulk Asbestos Report
For EBA Engineering Cons. Ltd. [Yukon]
Location : Faro Mine Site [W23101482]
Project : W23101482

11040	23101482	Sample Location / Description	Result(s)	Analyzed	Analyst ACM
35 . 1	035	HVAC Paper Wrap, Warehouse Boiler Rm Layer 1 Weave / Coating * Sample [Composite] Subjected To An Ashing Procedure	Asbestos Fibres Not Detected 60 - 70 % Cellulose Fibres > 30 % Non-fibrous	Nov 16 2011 LP 55 %	GN ---
35 . 2	035	HVAC Paper Wrap, Warehouse Boiler Rm Layer 2 Foil	Asbestos Fibres Not Detected 95 -100 % Non-fibrous	Nov 16 2011 LP 5 %	GN ---
35 . 3	035	HVAC Paper Wrap, Warehouse Boiler Rm Layer 3 Grey Mastic	Asbestos Fibres Not Detected 95 -100 % Non-fibrous	Nov 16 2011 LP 10 %	GN ---
35 . 4	035	HVAC Paper Wrap, Warehouse Boiler Rm Layer 4 Weave	Asbestos Fibres Not Detected 90 - 95 % Fibrous Glass > 5 % Non-fibrous	Nov 16 2011 LP 10 %	GN ---
35 . 5	035	HVAC Paper Wrap, Warehouse Boiler Rm Layer 5 Brown Black Fibrous	Asbestos Fibres Not Detected 90 - 95 % Cellulose Fibres > 5 % Non-fibrous	Nov 16 2011 LP 20 %	GN ---
36 . 1	036	DWJC, Warehouse Boiler Rm Layer 1 Light Grey	1 - 5 % Chrysotile Asbestos > 95 % Non-fibrous	Nov 16 2011 LP 70 %	GN .T.
36 . 2	036	DWJC, Warehouse Boiler Rm Layer 2 Brown Fibrous	Asbestos Fibres Not Detected 95 -100 % Cellulose Fibres > 1 % Non-fibrous	Nov 16 2011 LP 30 %	GN ---
37 . 1	037	DWJC, Reagents Bldg, 2nd Floor Elec Rm Layer 1 White / Coating * Layer Subjected To An Ashing Procedure	Asbestos Fibres Not Detected 95 -100 % Non-fibrous	Nov 16 2011 LP 70 %	GN ---
37 . 2	037	DWJC, Reagents Bldg, 2nd Floor Elec Rm Layer 2 Cream Fibrous	Asbestos Fibres Not Detected 95 -100 % Cellulose Fibres > 1 % Non-fibrous	Nov 16 2011 LP 30 %	GN ---

Wes-Har Asbestos Analysis & Consulting Ltd.

Bulk Asbestos Report
For EBA Engineering Cons. Ltd. [Yukon]
Location : Faro Mine Site [W23101482]
Project : W23101482

11040	23101482	Sample Location / Description	Result(s)	Analyzed	Analyst ACM
38	038	Not Submitted	Not Submitted	Nov 16 2011	WN ---
* Sample Not Submitted					
39	039	Not Submitted	Not Submitted	Nov 16 2011	WN ---
* Sample Not Submitted					
40 . 1	040	DWJC, Mill, Maintenance Rm Layer 1 White / Coating	Asbestos Fibres Not Detected 95 -100 % Non-fibrous	Nov 16 2011	GN --- LP 30 %
40 . 2	040	DWJC, Mill, Maintenance Rm Layer 2 Beige-Brown Fibrous	Asbestos Fibres Not Detected 95 -100 % Cellulose Fibres > 1 % Non-fibrous	Nov 16 2011	GN --- LP 10 %
40 . 3	040	DWJC, Mill, Maintenance Rm Layer 3 Light Grey	Asbestos Fibres Not Detected 1 - 5 % Fibrous Glass DNQ Micaceous Material > 95 % Non-fibrous	Nov 16 2011	GN --- LP 60 %
41 . 1	041	12x12 Beige VFT, Mill Maintenance Office Layer 1 Light Grey	1 - 5 % Chrysotile Asbestos > 95 % Non-fibrous	Nov 16 2011	GN .T. LP 99 %
* Layer Subjected To An Ashing And Acid Washing Procedure					
41 . 2	041	12x12 Beige VFT, Mill Maintenance Office Layer 2 Black Mastic Patches	Asbestos Fibres Not Detected 95 -100 % Non-fibrous	Nov 16 2011	GN --- LP 1 %
* Layer Subjected To An Ashing Procedure					
42	042	3x2 White Ceiling Tile, Mill Drafting Rm	Asbestos Fibres Not Detected 95 -100 % Cellulose Fibres > 1 % Non-fibrous	Nov 16 2011	GN ---
* Sample Subjected To An Ashing Procedure					
43	043	DWJC, Mill Drafting Rm	Asbestos Fibres Not Detected 95 -100 % Non-fibrous	Nov 16 2011	GN ---

Wes-Har Asbestos Analysis & Consulting Ltd.

Bulk Asbestos Report
For EBA Engineering Cons. Ltd. [Yukon]
Location : Faro Mine Site [W23101482]
Project : W23101482

11040	23101482	Sample Location / Description	Result(s)	Analyzed	Analyst ACM
44	044	DWJC, Mill Grinding Control Rm	Asbestos Fibres Not Detected 95 -100 % Non-fibrous	Nov 16 2011	GN ---
45 . 1	045	Mudded Pipe Ins., Mill Loagging @ Crusher Phase 1 Weave / Coating * Sample [Composite] Subjected To An Ashing Procedure	Asbestos Fibres Not Detected 80 - 85 % Cellulose Fibres > 15 % Non-fibrous	Nov 16 2011	GN --- LP 20 %
45 . 2	045	Mudded Pipe Ins., Mill Loagging @ Crusher Phase 2 Light Grey Fibrous	70 - 80 % Amosite Asbestos 1 - 5 % Chrysotile Asbestos > 15 % Non-fibrous	Nov 16 2011	GN .T. LP 80 %
46	046	1x1 White Ceiling Tile, Mill Former Assay Lab * Sample Subjected To An Ashing Procedure	Asbestos Fibres Not Detected 95 -100 % Cellulose Fibres > 1 % Non-fibrous	Nov 16 2011	GN ---
47 . 1	047	12x12 Beige VFT, Mill Former Assay Lab Layer 1 Beige * Layer Subjected To An Ashing And Acid Washing Procedure	Asbestos Fibres Not Detected 95 -100 % Non-fibrous	Nov 16 2011	GN --- LP 90 %
47 . 2	047	12x12 Beige VFT, Mill Former Assay Lab Layer 2 Black Mastic Patches * Layer 2 & 3 [Composite] Subjected To An Ashing And Acid Washing Procedure	Asbestos Fibres Not Detected 95 -100 % Non-fibrous	Nov 16 2011	GN --- LP 5 %
47 . 3	047	12x12 Beige VFT, Mill Former Assay Lab Layer 3 Grey Patches	Asbestos Fibres Not Detected DNQ Quartz 95 -100 % Non-fibrous	Nov 16 2011	GN --- LP 5 %
48 . 1	048	DWJC, Mill Former Lab Layer 1 Light Brown Grey / Coating * Layer Subjected To An Ashing Procedure	1 - 5 % Chrysotile Asbestos > 95 % Non-fibrous	Nov 16 2011	GN .T. LP 30 %
48 . 2	048	DWJC, Mill Former Lab Layer 2 Beige Fibrous	Asbestos Fibres Not Detected 95 -100 % Cellulose Fibres > 1 % Non-fibrous	Nov 16 2011	GN --- LP 15 %

Wes-Har

Asbestos Analysis & Consulting Ltd.

Bulk Asbestos Report

For EBA Engineering Cons. Ltd. [Yukon]

Location : Faro Mine Site [W23101482]

Project : W23101482

11040	23101482	Sample Location / Description	Result(s)	Analyzed	Analyst ACM
48 . 3	048	DWJC, Mill Former Lab Layer 3 Light Brown Grey * Layer Subjected To An Ashing Procedure	1 - 5 % Chrysotile Asbestos > 95 % Non-fibrous	Nov 16 2011	GN .T. LP 25 %
48 . 4	048	DWJC, Mill Former Lab Layer 4 Beige Brown Fibrous	Asbestos Fibres Not Detected 95 -100 % Cellulose Fibres > 1 % Non-fibrous	Nov 16 2011	GN --- LP 20 %
48 . 5	048	DWJC, Mill Former Lab Layer 5 Light Grey Patch	Asbestos Fibres Not Detected 1 - 5 % Fibrous Glass DNQ Micaceous Material > 95 % Non-fibrous	Nov 16 2011	GN --- LP 10 %
49	049	DWJC, Mill Former Lab	Asbestos Fibres Not Detected 95 -100 % Non-fibrous	Nov 16 2011	GN ---
50 . 1	050	DWJC, Upper Server Rm Layer 1 White / Coating	Asbestos Fibres Not Detected 95 -100 % Non-fibrous	Nov 16 2011	GN --- LP 55 %
50 . 2	050	DWJC, Upper Server Rm Layer 2 Weave	Asbestos Fibres Not Detected 90 - 95 % Fibrous Glass > 5 % Non-fibrous	Nov 16 2011	GN --- LP 20 %
50 . 3	050	DWJC, Upper Server Rm Layer 3 Brown Fibrous	Asbestos Fibres Not Detected 95 -100 % Cellulose Fibres > 1 % Non-fibrous	Nov 16 2011	GN --- LP 15 %
50 . 4	050	DWJC, Upper Server Rm Layer 4 Light Grey	Asbestos Fibres Not Detected 5 - 10 % Cellulose Fibres > 90 % Non-fibrous	Nov 16 2011	GN --- LP 10 %
51 . 1	051	DWJC, Mill Rm Adjacent to Server Layer 1 White / Coating	Asbestos Fibres Not Detected 95 -100 % Non-fibrous	Nov 17 2011	GN --- LP 55 %

Wes-Har Asbestos Analysis & Consulting Ltd.

Bulk Asbestos Report
For EBA Engineering Cons. Ltd. [Yukon]
Location : Faro Mine Site [W23101482]
Project : W23101482

11040	23101482	Sample Location / Description	Result(s)	Analyzed	Analyst ACM
51 . 2	051	DWJC, Mill Rm Adjacent to Server Layer 2 Weave	Asbestos Fibres Not Detected 90 - 95 % Fibrous Glass > 5 % Non-fibrous	Nov 17 2011 LP 20 %	GN ---
51 . 3	051	DWJC, Mill Rm Adjacent to Server Layer 3 Brown Fibrous	Asbestos Fibres Not Detected 95 -100 % Cellulose Fibres > 1 % Non-fibrous	Nov 17 2011 LP 15 %	GN ---
51 . 4	051	DWJC, Mill Rm Adjacent to Server Layer 4 Light Grey	Asbestos Fibres Not Detected 5 - 10 % Cellulose Fibres > 90 % Non-fibrous	Nov 17 2011 LP 10 %	GN ---
52 . 1	052	12x12 White w/Black VFT,Mill 2nd Floor@Server Layer 1 White * Layer Subjected To An Ashing And Acid Washing Procedure	Asbestos Fibres Not Detected 95 -100 % Non-fibrous	Nov 17 2011 LP 97 %	GN ---
52 . 2	052	12x12 White w/Black VFT,Mill 2nd Floor@Server Layer 2 Black Mastic Patches * Layer Subjected To An Ashing Procedure	Asbestos Fibres Not Detected 95 -100 % Non-fibrous	Nov 17 2011 LP 3 %	GN ---
53	053	Vermiculite, Mill, Packaging Contents	See Vermiculite Report	Nov 17 2011	GN .T.
54	054	Packaging Rope, Mill Machine Shop * Sample Subjected To An Ashing Procedure	80 - 85 % Chrysotile Asbestos 5 - 10 % Synthetic Fibres > 5 % Non-fibrous	Nov 17 2011	GN .T.
55	055	Sucker Bags, Mill, Dewatering Rm * Sample Subjected To An Ashing Procedure	Asbestos Fibres Not Detected 90 - 95 % Synthetic Fibres > 5 % Non-fibrous	Nov 17 2011	GN ---
56	056	Mudded Pipe Insulation Lagging, Mill, Heat Rm * Sample Subjected To An Ashing Procedure	85 - 90 % Amosite Asbestos > 10 % Non-fibrous	Nov 17 2011	GN .T.

Wes-Har Asbestos Analysis & Consulting Ltd.

Bulk Asbestos Report
For EBA Engineering Cons. Ltd. [Yukon]
Location : Faro Mine Site [W23101482]
Project : W23101482

11040	23101482	Sample Location / Description	Result(s)	Analyzed	Analyst ACM
57 . 1	057	Mudded Pipe Insulation @ Elbow, Mill, Heat Rm Layer 1 Weave / Coating * Sample [Composite] Subjected To An Ashing Procedure	Asbestos Fibres Not Detected 70 - 80 % Cellulose Fibres > 20 % Non-fibrous	Nov 17 2011	GN --- LP 10 %
57 . 2	057	Mudded Pipe Insulation @ Elbow, Mill, Heat Rm Layer 2 Grey Fibrous	60 - 70 % Chrysotile Asbestos > 30 % Non-fibrous	Nov 17 2011	GN .T. LP 20 %
57 . 3	057	Mudded Pipe Insulation @ Elbow, Mill, Heat Rm Layer 3 Grey Fibrous	85 - 90 % Amosite Asbestos > 10 % Non-fibrous	Nov 17 2011	GN .T. LP 70 %
58 . 1	058	Mudded Pipe Insulation @ Elbow, Mill, Heat Rm Layer 1 Weave / Coating * Sample [Composite] Subjected To An Ashing Procedure	Asbestos Fibres Not Detected 85 - 90 % Cellulose Fibres > 10 % Non-fibrous	Nov 17 2011	GN --- LP 30 %
58 . 2	058	Mudded Pipe Insulation @ Elbow, Mill, Heat Rm Layer 2 Cream Fibrous	60 - 70 % Chrysotile Asbestos 5 - 10 % Fibrous Glass > 20 % Non-fibrous	Nov 17 2011	GN .T. LP 70 %
59 . 1	059	12x12 Grey VFT, Mill, Upper Office Area Layer 1 Cream * Layer Subjected To An Ashing And Acid Washing Procedure	1 - 5 % Chrysotile Asbestos > 95 % Non-fibrous	Nov 17 2011	GN .T. LP 98 %
59 . 2	059	12x12 Grey VFT, Mill, Upper Office Area Layer 2 Black Mastic Patches * Layer Subjected To An Ashing Procedure	Asbestos Fibres Not Detected 95 -100 % Non-fibrous	Nov 17 2011	GN --- LP 2 %
60	060	DWJC, Mill, Upper Office Area	Asbestos Fibres Not Detected 95 -100 % Non-fibrous	Nov 17 2011	GN ---
61 . 1	061	DWJC, Mill, Upper Office Area Layer 1 White / Coating * Layer Subjected To An Ashing Procedure	Asbestos Fibres Not Detected 95 -100 % Non-fibrous	Nov 17 2011	GN --- LP 50 %
61 . 2	061	DWJC, Mill, Upper Office Area Layer 2 White Fibrous	Asbestos Fibres Not Detected 95 -100 % Cellulose Fibres > 1 % Non-fibrous	Nov 17 2011	GN --- LP 20 %

 Lab File 11040
 Client Id : 23101482

Unit 170 2188 No. 5 Road Richmond British Columbia V6X 2T1 (604) - 279 - 9445

American Industrial Hygiene Association BAPAT Lab. Id. No. 149340

Client Reference Id: W23101482

Wes-Har

Asbestos Analysis & Consulting Ltd.

Bulk Asbestos Report

For EBA Engineering Cons. Ltd. [Yukon]

Location : Faro Mine Site [W23101482]

Project : W23101482

11040	23101482	Sample Location / Description	Result(s)	Analyzed	Analyst ACM
61 . 3	061	DWJC, Mill, Upper Office Area Layer 3 White Patches	Asbestos Fibres Not Detected 95 -100 % Non-fibrous	Nov 17 2011	GN --- LP 30 %
62	062	DWJC, Mill, Upper Office Area	Asbestos Fibres Not Detected 95 -100 % Non-fibrous	Nov 17 2011	GN ---
63 . 1	063	DWJC, Mill, Upper Office Area Layer 1 White / Coating * Layer Subjected To An Ashing Procedure	Asbestos Fibres Not Detected 95 -100 % Non-fibrous	Nov 17 2011	GN --- LP 70 %
63 . 2	063	DWJC, Mill, Upper Office Area Layer 2 Brown Fibrous	Asbestos Fibres Not Detected 95 -100 % Cellulose Fibres > 1 % Non-fibrous	Nov 17 2011	GN --- LP 20 %
63 . 3	063	DWJC, Mill, Upper Office Area Layer 3 Light Grey Patch	Asbestos Fibres Not Detected 1 - 5 % Cellulose Fibres 1 - 5 % Fibrous Glass DNQ Micaceous Material > 90 % Non-fibrous	Nov 17 2011	GN --- LP 10 %
64 . 1	064	DWJC, Mill, Upper Office Area Layer 1 White / Coating	Asbestos Fibres Not Detected 95 -100 % Non-fibrous	Nov 17 2011	GN --- LP 70 %
64 . 2	064	DWJC, Mill, Upper Office Area Layer 2 White Fibrous	Asbestos Fibres Not Detected 95 -100 % Cellulose Fibres > 1 % Non-fibrous	Nov 17 2011	GN --- LP 5 %
64 . 3	064	DWJC, Mill, Upper Office Area Layer 3 White Patches	Asbestos Fibres Not Detected 95 -100 % Non-fibrous	Nov 17 2011	GN --- LP 3 %
64 . 4	064	DWJC, Mill, Upper Office Area Layer 4 Brown Fibrous	Asbestos Fibres Not Detected 95 -100 % Cellulose Fibres > 1 % Non-fibrous	Nov 17 2011	GN --- LP 20 %

Wes-Har

Asbestos Analysis & Consulting Ltd.

Bulk Asbestos Report

For EBA Engineering Cons. Ltd. [Yukon]

Location : Faro Mine Site [W23101482]

Project : W23101482

11040	23101482	Sample Location / Description	Result(s)	Analyzed	Analyst ACM
64 . 5	064	DWJC, Mill, Upper Office Area Layer 5 Light Grey Patch	Asbestos Fibres Not Detected 1 - 5 % Cellulose Fibres 1 - 5 % Fibrous Glass > 90 % Non-fibrous	Nov 17 2011	GN --- LP 2 %
65	065	DWJC, Mill, Upper Office Area	Asbestos Fibres Not Detected 95 -100 % Non-fibrous	Nov 17 2011	GN ---
66 . 1	066	DWJC, Mill, Upper Office Area Layer 1 White / Coating	Asbestos Fibres Not Detected 95 -100 % Non-fibrous	Nov 17 2011	GN --- LP 80 %
66 . 2	066	DWJC, Mill, Upper Office Area Layer 2 Cream Fibrous	Asbestos Fibres Not Detected 95 -100 % Cellulose Fibres > 1 % Non-fibrous	Nov 17 2011	GN --- LP 18 %
66 . 3	066	DWJC, Mill, Upper Office Area Layer 3 White Patch * Layer Subjected To An Ashing Procedure	Asbestos Fibres Not Detected 95 -100 % Non-fibrous	Nov 17 2011	GN --- LP 2 %
67 . 1	067	DWJC, Mill, Upper Office Area Layer 1 White / Coating	Asbestos Fibres Not Detected 95 -100 % Non-fibrous	Nov 17 2011	GN --- LP 50 %
67 . 2	067	DWJC, Mill, Upper Office Area Layer 2 White Fibrous	Asbestos Fibres Not Detected 95 -100 % Cellulose Fibres > 1 % Non-fibrous	Nov 17 2011	GN --- LP 15 %
67 . 3	067	DWJC, Mill, Upper Office Area Layer 3 White	Asbestos Fibres Not Detected 95 -100 % Non-fibrous	Nov 17 2011	GN --- LP 25 %
67 . 4	067	DWJC, Mill, Upper Office Area Layer 4 Brown Fibrous	Asbestos Fibres Not Detected 95 -100 % Cellulose Fibres > 1 % Non-fibrous	Nov 17 2011	GN --- LP 8 %

Wes-Har

Asbestos Analysis & Consulting Ltd.

Bulk Asbestos Report

For EBA Engineering Cons. Ltd. [Yukon]

Location : Faro Mine Site [W23101482]

Project : W23101482

11040	23101482	Sample Location / Description	Result(s)	Analyzed	Analyst ACM
67 . 5	067	DWJC, Mill, Upper Office Area Layer 5 Light Grey Patch	Asbestos Fibres Not Detected 1 - 5 % Cellulose Fibres 1 - 5 % Fibrous Glass DNQ Micaceous Material > 90 % Non-fibrous	Nov 17 2011	GN --- LP 2 %
68 . 1	068	DWJC, Mill, Upper Office Area Layer 1 White / Coating	Asbestos Fibres Not Detected 95 -100 % Non-fibrous	Nov 17 2011	GN --- LP 50 %
68 . 2	068	DWJC, Mill, Upper Office Area Layer 2 White Fibrous	Asbestos Fibres Not Detected 95 -100 % Cellulose Fibres > 1 % Non-fibrous	Nov 17 2011	GN --- LP 15 %
68 . 3	068	DWJC, Mill, Upper Office Area Layer 3 White * Layer Subjected To An Ashing Procedure	Asbestos Fibres Not Detected 95 -100 % Non-fibrous	Nov 17 2011	GN --- LP 25 %
68 . 4	068	DWJC, Mill, Upper Office Area Layer 4 Brown Fibrous	Asbestos Fibres Not Detected 95 -100 % Cellulose Fibres > 1 % Non-fibrous	Nov 17 2011	GN --- LP 5 %
68 . 5	068	DWJC, Mill, Upper Office Area Layer 5 Light Grey Patch	Asbestos Fibres Not Detected 1 - 5 % Fibrous Glass DNQ Micaceous Material > 95 % Non-fibrous	Nov 17 2011	GN --- LP 5 %
69 . 1	069	DWJC, Mill, Upper Office Area Layer 1 White / Coating	Asbestos Fibres Not Detected 95 -100 % Non-fibrous	Nov 17 2011	GN --- LP 35 %
69 . 2	069	DWJC, Mill, Upper Office Area Layer 2 White Fibrous	Asbestos Fibres Not Detected 95 -100 % Cellulose Fibres > 1 % Non-fibrous	Nov 17 2011	GN --- LP 15 %

Wes-Har

Asbestos Analysis & Consulting Ltd.

Bulk Asbestos Report

For EBA Engineering Cons. Ltd. [Yukon]

Location : Faro Mine Site [W23101482]

Project : W23101482

11040	23101482	Sample Location / Description	Result(s)	Analyzed	Analyst ACM
69 . 3	069	DWJC, Mill, Upper Office Area Layer 3 White * Layer Subjected To An Ashing Procedure	Asbestos Fibres Not Detected 95 -100 % Non-fibrous	Nov 17 2011	GN --- LP 30 %
69 . 4	069	DWJC, Mill, Upper Office Area Layer 4 Brown Fibrous	Asbestos Fibres Not Detected 95 -100 % Cellulose Fibres > 1 % Non-fibrous	Nov 17 2011	GN --- LP 20 %
70	070	3x2 Stippled Ceiling Tile, Mill, Office Area * Sample Subjected To An Ashing Procedure	Asbestos Fibres Not Detected 95 -100 % Cellulose Fibres Less Than 1 % Fibrous Glass > 1 % Non-fibrous	Nov 17 2011	GN ---
71	071	DWJC, Mill, Electrical Shop	Asbestos Fibres Not Detected 95 -100 % Non-fibrous	Nov 17 2011	GN ---
72	072	DWJC, Mill, Electrical Shop	Asbestos Fibres Not Detected 95 -100 % Non-fibrous	Nov 17 2011	GN ---
73	073	DWJC, Mill, Electrical Shop	Asbestos Fibres Not Detected 95 -100 % Non-fibrous	Nov 17 2011	GN ---
74	074	DWJC, Mill, Former Lunch Rm	Asbestos Fibres Not Detected 95 -100 % Non-fibrous	Nov 17 2011	GN ---
75	075	3x2 Stippled Ceiling Tile, Mill, Former Lunch Rm * Sample Subjected To An Ashing Procedure	Asbestos Fibres Not Detected 20 - 30 % Fibrous Glass 20 - 30 % Cellulose Fibres DNQ Perlite > 40 % Non-fibrous	Nov 17 2011	GN ---
76	076	DWJC, Mill, Former Lunch Room	Asbestos Fibres Not Detected 95 -100 % Non-fibrous	Nov 17 2011	GN ---
77 . 1	077	DWJC, Mill, Former Lunch Rm Layer 1 White / Coating	Asbestos Fibres Not Detected 95 -100 % Non-fibrous	Nov 17 2011	GN --- LP 75 %
77 . 2	077	DWJC, Mill, Former Lunch Rm Layer 2 White Fibrous	Asbestos Fibres Not Detected 95 -100 % Cellulose Fibres > 1 % Non-fibrous	Nov 17 2011	GN --- LP 20 %

Lab File 11040
Client Id : 23101482

Unit 170 2188 No. 5 Road Richmond British Columbia V6X 2T1 (604) - 279 - 9445

American Industrial Hygiene Association BAPAT Lab. Id. No. 149340

Client Reference Id: W23101482

Wes-Har

Asbestos Analysis & Consulting Ltd.

Bulk Asbestos Report

For EBA Engineering Cons. Ltd. [Yukon]

Location : Faro Mine Site [W23101482]

Project : W23101482

11040	23101482	Sample Location / Description	Result(s)	Analyzed	Analyst ACM
77 . 3	077	DWJC, Mill, Former Lunch Rm Layer 3 White Patches * Layer Subjected To An Ashing Procedure	Asbestos Fibres Not Detected 95 -100 % Non-fibrous	Nov 17 2011	GN --- LP 5 %
78 . 1	078	Beige Pattern Lino, Millwright Building Layer 1 Clear * Sample [Composite] Subjected To An Ashing Procedure	Asbestos Fibres Not Detected 95 -100 % Non-fibrous	Nov 17 2011	GN --- LP 20 %
78 . 2	078	Beige Pattern Lino, Millwright Building Layer 2 White Spongy Pattern	Asbestos Fibres Not Detected 95 -100 % Non-fibrous	Nov 17 2011	GN --- LP 60 %
78 . 3	078	Beige Pattern Lino, Millwright Building Layer 3 Light Grey Fibrous	Asbestos Fibres Not Detected 85 - 90 % Cellulose Fibres 1 - 5 % Fibrous Glass > 5 % Non-fibrous	Nov 17 2011	GN --- LP 20 %
79	079	DWJC, Wall of Millwright Building	Asbestos Fibres Not Detected 95 -100 % Non-fibrous	Nov 17 2011	GN ---
80	080	DWJC, Ceiling of Millwright Building	Asbestos Fibres Not Detected 95 -100 % Non-fibrous	Nov 17 2011	GN ---
81 . 1	081	Dark Beige Lino, Millwright Building Office Layer 1 Clear * Sample [Composite] Subjected To An Ashing Procedure	Asbestos Fibres Not Detected 95 -100 % Non-fibrous	Nov 17 2011	GN --- LP 20 %
81 . 2	081	Dark Beige Lino, Millwright Building Office Layer 2 White Spongy Pattern	Asbestos Fibres Not Detected 95 -100 % Non-fibrous	Nov 17 2011	GN --- LP 60 %
81 . 3	081	Dark Beige Lino, Millwright Building Office Layer 3 Light Grey Fibrous	Asbestos Fibres Not Detected 85 - 90 % Cellulose Fibres 1 - 5 % Fibrous Glass > 5 % Non-fibrous	Nov 17 2011	GN --- LP 20 %
82 . 1	082	Pebble Pattern Lino, Millwright Building Office Layer 1 White Spongy Pattern * Sample [Composite] Subjected To An Ashing Procedure	Asbestos Fibres Not Detected 95 -100 % Non-fibrous	Nov 17 2011	GN --- LP 70 %

Lab File 11040
Client Id : 23101482

Unit 170 2188 No. 5 Road Richmond British Columbia V6X 2T1 (604) - 279 - 9445

American Industrial Hygiene Association BAPAT Lab. Id. No. 149340

Client Reference Id: W23101482

Wes-Har

Asbestos Analysis & Consulting Ltd.

Bulk Asbestos Report

For EBA Engineering Cons. Ltd. [Yukon]

Location : Faro Mine Site [W23101482]

Project : W23101482

11040	23101482	Sample Location / Description	Result(s)	Analyzed	Analyst ACM
82 . 2	082	Pebble Pattern Lino, Millwright Building Office Layer 2 Light Grey Fibrous	Asbestos Fibres Not Detected 85 - 90 % Cellulose Fibres 1 - 5 % Fibrous Glass > 5 % Non-fibrous	Nov 17 2011	GN --- LP 30 %
83 . 1	083	VSF, Guard Building, Front of Security Desk Layer 1 Light Grey * Layer Subjected To An Ashing And Acid Washing Procedure	Asbestos Fibres Not Detected 1 - 5 % Fibrous Glass > 95 % Non-fibrous	Nov 17 2011	GN --- LP 90 %
83 . 2	083	VSF, Guard Building, Front of Security Desk Layer 2 Black Mastic * Layer Subjected To An Ashing Procedure	Asbestos Fibres Not Detected 95 -100 % Non-fibrous	Nov 17 2011	GN --- LP 5 %
83 . 3	083	VSF, Guard Building, Front of Security Desk Layer 3 Brown Fibrous Patch * Layer Subjected To An Ashing Procedure	Asbestos Fibres Not Detected 95 -100 % Cellulose Fibres > 1 % Non-fibrous	Nov 17 2011	GN --- LP 5 %
84 . 1	084	DWJC, Guard Building, Stairwell 1st Floor Layer 1 Fibrous Patches	Asbestos Fibres Not Detected 50 - 60 % Fibrous Glass 20 - 30 % Synthetic Fibres 1 - 5 % Cellulose Fibres > 5 % Non-fibrous	Nov 17 2011	GN --- LP 1 %
84 . 2	084	DWJC, Guard Building, Stairwell 1st Floor Layer 2 Light Grey	Asbestos Fibres Not Detected 95 -100 % Non-fibrous	Nov 17 2011	GN --- LP 99 %
85	085	3x2 Black Stippled Ceiling Tile, Guard Building, 1st Floor * Sample Subjected To An Ashing Procedure	Asbestos Fibres Not Detected 20 - 30 % Fibrous Glass 20 - 30 % Cellulose Fibres DNQ Perlite > 40 % Non-fibrous	Nov 17 2011	GN ---
86 . 1	086	DWJC, Guard Building, Hallway by Garage Layer 1 White / Coating * Layer Subjected To An Ashing Procedure	Asbestos Fibres Not Detected 95 -100 % Non-fibrous	Nov 17 2011	GN --- LP 35 %

Wes-Har

Asbestos Analysis & Consulting Ltd.

Bulk Asbestos Report

For EBA Engineering Cons. Ltd. [Yukon]

Location : Faro Mine Site [W23101482]

Project : W23101482

11040	23101482	Sample Location / Description	Result(s)	Analyzed	Analyst ACM
86 . 2	086	DWJC, Guard Building, Hallway by Garage Layer 2 White Fibrous	Asbestos Fibres Not Detected 95 -100 % Cellulose Fibres > 1 % Non-fibrous	Nov 17 2011 LP 10 %	GN ---
86 . 3	086	DWJC, Guard Building, Hallway by Garage Layer 3 White * Layer Subjected To An Ashing Procedure	Asbestos Fibres Not Detected 95 -100 % Non-fibrous	Nov 17 2011 LP 30 %	GN ---
86 . 4	086	DWJC, Guard Building, Hallway by Garage Layer 4 Brown Fibrous	Asbestos Fibres Not Detected 95 -100 % Cellulose Fibres > 1 % Non-fibrous	Nov 17 2011 LP 20 %	GN ---
86 . 5	086	DWJC, Guard Building, Hallway by Garage Layer 5 Light Grey Patch	Asbestos Fibres Not Detected 1 - 5 % Fibrous Glass DNQ Micaceous Material > 95 % Non-fibrous	Nov 17 2011 LP 5 %	GN ---
87 . 1	087	DWJC, Guard Building, First Aid Rm Layer 1 White / Coating * Layer Subjected To An Ashing Procedure	Asbestos Fibres Not Detected 95 -100 % Non-fibrous	Nov 17 2011 LP 30 %	GN ---
87 . 2	087	DWJC, Guard Building, First Aid Rm Layer 2 White Fibrous	Asbestos Fibres Not Detected 95 -100 % Cellulose Fibres > 1 % Non-fibrous	Nov 17 2011 LP 10 %	GN ---
87 . 3	087	DWJC, Guard Building, First Aid Rm Layer 3 White * Layer Subjected To An Ashing Procedure	Asbestos Fibres Not Detected 95 -100 % Non-fibrous	Nov 17 2011 LP 35 %	GN ---
87 . 4	087	DWJC, Guard Building, First Aid Rm Layer 4 Brown Fibrous	Asbestos Fibres Not Detected 95 -100 % Cellulose Fibres > 1 % Non-fibrous	Nov 17 2011 LP 20 %	GN ---
87 . 5	087	DWJC, Guard Building, First Aid Rm Layer 5 Light Grey Patch	Asbestos Fibres Not Detected 1 - 5 % Fibrous Glass DNQ Micaceous Material > 95 % Non-fibrous	Nov 17 2011 LP 5 %	GN ---

Wes-Har

Asbestos Analysis & Consulting Ltd.

Bulk Asbestos Report

For EBA Engineering Cons. Ltd. [Yukon]

Location : Faro Mine Site [W23101482]

Project : W23101482

11040	23101482	Sample Location / Description	Result(s)	Analyzed	Analyst ACM
88 . 1	088	DWJC, Guard Building, First Aid Rm Layer 1 White / Coating	Asbestos Fibres Not Detected 95 -100 % Non-fibrous	Nov 17 2011	GN --- LP 35 %
88 . 2	088	DWJC, Guard Building, First Aid Rm Layer 2 White Fibrous	Asbestos Fibres Not Detected 95 -100 % Cellulose Fibres > 1 % Non-fibrous	Nov 17 2011	GN --- LP 10 %
88 . 3	088	DWJC, Guard Building, First Aid Rm Layer 3 White	Asbestos Fibres Not Detected 95 -100 % Non-fibrous	Nov 17 2011	GN --- LP 55 %
89 . 1	089	DWJC, Guard Building, First Floor Hallway Layer 1 White / Coating	Asbestos Fibres Not Detected 95 -100 % Non-fibrous	Nov 17 2011	GN --- LP 50 %
89 . 2	089	DWJC, Guard Building, First Floor Hallway Layer 2 Beige-Brown Fibrous	Asbestos Fibres Not Detected 95 -100 % Cellulose Fibres > 1 % Non-fibrous	Nov 17 2011	GN --- LP 20 %
89 . 3	089	DWJC, Guard Building, First Floor Hallway Layer 3 White	Asbestos Fibres Not Detected 1 - 5 % Fibrous Glass > 95 % Non-fibrous	Nov 17 2011	GN --- LP 30 %
90 . 1	090	12x12 VFT, Guard Building, 2nd Floor Office Layer 1 Light Beige	1 - 5 % Chrysotile Asbestos > 95 % Non-fibrous	Nov 17 2011	GN .T. LP 98 %
		* Layer Subjected To An Ashing And Acid Washing Procedure			
90 . 2	090	12x12 VFT, Guard Building, 2nd Floor Office Layer 2 Black Mastic	Asbestos Fibres Not Detected 95 -100 % Non-fibrous	Nov 17 2011	GN --- LP 2 %
		* Layer Subjected To An Ashing Procedure			
91 . 1	091	DWJC, Guard Building, 2nd Floor Office Layer 1 White / Coating	Asbestos Fibres Not Detected 95 -100 % Non-fibrous	Nov 18 2011	GN --- LP 65 %

Wes-Har

Asbestos Analysis & Consulting Ltd.

Bulk Asbestos Report

For EBA Engineering Cons. Ltd. [Yukon]

Location : Faro Mine Site [W23101482]

Project : W23101482

11040	23101482	Sample Location / Description	Result(s)	Analyzed	Analyst	ACM
91 . 2	091	DWJC, Guard Building, 2nd Floor Office Layer 2 Cream Fibrous	Asbestos Fibres Not Detected 95 -100 % Cellulose Fibres > 1 % Non-fibrous	Nov 18 2011	GN	---
				LP		30 %
91 . 3	091	DWJC, Guard Building, 2nd Floor Office Layer 3 White Patches * Layer Subjected To An Ashing Procedure	Asbestos Fibres Not Detected 95 -100 % Non-fibrous	Nov 18 2011	GN	---
				LP		5 %
92 . 1	092	DWJC, Guard Building, 1st Floor Janitor Rm Layer 1 White / Coating * Layer Subjected To An Ashing Procedure	Asbestos Fibres Not Detected 95 -100 % Non-fibrous	Nov 18 2011	GN	---
				LP		10 %
92 . 2	092	DWJC, Guard Building, 1st Floor Janitor Rm Layer 2 Cream Fibrous	Asbestos Fibres Not Detected 95 -100 % Cellulose Fibres > 1 % Non-fibrous	Nov 18 2011	GN	---
				LP		20 %
92 . 3	092	DWJC, Guard Building, 1st Floor Janitor Rm Layer 3 White * Layer Subjected To An Ashing Procedure	Asbestos Fibres Not Detected 95 -100 % Non-fibrous	Nov 18 2011	GN	---
				LP		25 %
92 . 4	092	DWJC, Guard Building, 1st Floor Janitor Rm Layer 4 Beige-Brown Fibrous	Asbestos Fibres Not Detected 95 -100 % Cellulose Fibres > 1 % Non-fibrous	Nov 18 2011	GN	---
				LP		15 %
92 . 5	092	DWJC, Guard Building, 1st Floor Janitor Rm Layer 5 White	Asbestos Fibres Not Detected 1 - 5 % Fibrous Glass > 95 % Non-fibrous	Nov 18 2011	GN	---
				LP		30 %
93 . 1	093	DWJC, Guard Building, 1st Floor Janitors Rm Layer 1 White / Coating * Layer Subjected To An Ashing Procedure	Asbestos Fibres Not Detected 95 -100 % Non-fibrous	Nov 18 2011	GN	---
				LP		15 %
93 . 2	093	DWJC, Guard Building, 1st Floor Janitors Rm Layer 2 Cream Fibrous	Asbestos Fibres Not Detected 95 -100 % Cellulose Fibres > 1 % Non-fibrous	Nov 18 2011	GN	---
				LP		10 %

Wes-Har

Asbestos Analysis & Consulting Ltd.

Bulk Asbestos Report

For EBA Engineering Cons. Ltd. [Yukon]

Location : Faro Mine Site [W23101482]

Project : W23101482

11040	23101482	Sample Location / Description	Result(s)	Analyzed	Analyst ACM
93 . 3	093	DWJC, Guard Building, 1st Floor Janitors Rm Layer 3 White * Layer Subjected To An Ashing Procedure	Asbestos Fibres Not Detected 95 -100 % Non-fibrous	Nov 18 2011	GN --- LP 25 %
93 . 4	093	DWJC, Guard Building, 1st Floor Janitors Rm Layer 4 Beige-Brown Fibrous	Asbestos Fibres Not Detected 95 -100 % Cellulose Fibres > 1 % Non-fibrous	Nov 18 2011	GN --- LP 15 %
93 . 5	093	DWJC, Guard Building, 1st Floor Janitors Rm Layer 5 White	Asbestos Fibres Not Detected 1 - 5 % Fibrous Glass > 95 % Non-fibrous	Nov 18 2011	GN --- LP 35 %
94	094	3x2 Stippled Ceiling Tile, Guard Building 1st Floor Hallway * Sample Subjected To An Ashing Procedure	Asbestos Fibres Not Detected 20 - 30 % Fibrous Glass 20 - 30 % Cellulose Fibres DNQ Perlite > 40 % Non-fibrous	Nov 18 2011	GN ---
95 . 1	095	DWJC, Guard Building, Security Office Layer 1 White / Coating	Asbestos Fibres Not Detected 95 -100 % Non-fibrous	Nov 18 2011	GN --- LP 60 %
95 . 2	095	DWJC, Guard Building, Security Office Layer 2 Cream Fibrous	Asbestos Fibres Not Detected 95 -100 % Cellulose Fibres > 1 % Non-fibrous	Nov 18 2011	GN --- LP 20 %
95 . 3	095	DWJC, Guard Building, Security Office Layer 3 White Patches * Layer Subjected To An Ashing Procedure	Asbestos Fibres Not Detected 95 -100 % Non-fibrous	Nov 18 2011	GN --- LP 20 %
96 . 1	096	DWJC, Guard Building Tool Storage Rm Layer 1 White / Coating	Asbestos Fibres Not Detected 95 -100 % Non-fibrous	Nov 18 2011	GN --- LP 50 %

Wes-Har

Asbestos Analysis & Consulting Ltd.

Bulk Asbestos Report

For EBA Engineering Cons. Ltd. [Yukon]

Location : Faro Mine Site [W23101482]

Project : W23101482

11040	23101482	Sample Location / Description	Result(s)	Analyzed	Analyst ACM
96 . 2	096	DWJC, Guard Building Tool Storage Rm Layer 2 Cream Fibrous	Asbestos Fibres Not Detected 95 -100 % Cellulose Fibres > 1 % Non-fibrous	Nov 18 2011 LP 20 %	GN ---
96 . 3	096	DWJC, Guard Building Tool Storage Rm Layer 3 White Patches	Asbestos Fibres Not Detected 95 -100 % Non-fibrous	Nov 18 2011 LP 30 %	GN ---
97 . 1	097	Flooring, Guard Building, Enviro Lab Layer 1 Light Coloured Pattern * Sample [Composite] Subjected To An Ashing Procedure	Asbestos Fibres Not Detected 95 -100 % Non-fibrous	Nov 18 2011 LP 60 %	GN ---
97 . 2	097	Flooring, Guard Building, Enviro Lab Layer 2 Grey	Asbestos Fibres Not Detected 95 -100 % Non-fibrous	Nov 18 2011 LP 10 %	GN ---
97 . 3	097	Flooring, Guard Building, Enviro Lab Layer 3 White Fibrous	Asbestos Fibres Not Detected 10 - 20 % Fibrous Glass > 80 % Non-fibrous	Nov 18 2011 LP 25 %	GN ---
97 . 4	097	Flooring, Guard Building, Enviro Lab Layer 4 Brown Fibrous	Asbestos Fibres Not Detected 70 - 80 % Synthetic Fibres 1 - 5 % Fibrous Glass > 15 % Non-fibrous	Nov 18 2011 LP 5 %	GN ---
98 . 1	098	Conc. 12x12 VFT, Guard Building, Enviro Office Layer 1 Light Grey * Layer Subjected To An Ashing And Acid Washing Procedure	1 - 5 % Chrysotile Asbestos > 95 % Non-fibrous	Nov 18 2011 LP 98 %	GN .T.
98 . 2	098	Conc. 12x12 VFT, Guard Building, Enviro Office Layer 2 Black Mastic * Layer Subjected To An Ashing Procedure	Asbestos Fibres Not Detected 95 -100 % Non-fibrous	Nov 18 2011 LP 2 %	GN ---
99 . 1	099	DWJC, Guard Building, Enviro Office Layer 1 White / Coating	Asbestos Fibres Not Detected 95 -100 % Non-fibrous	Nov 18 2011 LP 70 %	GN ---

Wes-Har

Asbestos Analysis & Consulting Ltd.

Bulk Asbestos Report

For EBA Engineering Cons. Ltd. [Yukon]

Location : Faro Mine Site [W23101482]

Project : W23101482

11040	23101482	Sample Location / Description	Result(s)	Analyzed	Analyst ACM
99 . 2	099	DWJC, Guard Building, Enviro Office Layer 2 Beige-Brown Fibrous	Asbestos Fibres Not Detected 95 -100 % Cellulose Fibres > 1 % Non-fibrous	Nov 18 2011 LP 20 %	GN ---
99 . 3	099	DWJC, Guard Building, Enviro Office Layer 3 White * Layer Subjected To An Ashing Procedure	Asbestos Fibres Not Detected 95 -100 % Non-fibrous	Nov 18 2011 LP 10 %	GN ---
100 . 1	100	DWJC, Guard Building, Safety Rm Layer 1 Beige-Brown Fibrous * Sample is a Portion of a Painted Wallboard with No Observable Drywall Joint Compound	Asbestos Fibres Not Detected 95 -100 % Cellulose Fibres > 1 % Non-fibrous	Nov 18 2011 LP 30 %	GN ---
100 . 2	100	DWJC, Guard Building, Safety Rm Layer 2 White	Asbestos Fibres Not Detected 1 - 5 % Fibrous Glass > 95 % Non-fibrous	Nov 18 2011 LP 70 %	GN ---
101	101	DWJC, Guard Building, Bulk Head in Garage	Asbestos Fibres Not Detected 95 -100 % Non-fibrous	Nov 18 2011	GN ---
102 . 1	102	DWJC, Guard Building, Entrance to Elec Rm Layer 1 White / Coating	Asbestos Fibres Not Detected 95 -100 % Non-fibrous	Nov 18 2011 LP 35 %	GN ---
102 . 2	102	DWJC, Guard Building, Entrance to Elec Rm Layer 2 Cream Fibrous	Asbestos Fibres Not Detected 95 -100 % Cellulose Fibres > 1 % Non-fibrous	Nov 18 2011 LP 5 %	GN ---
102 . 3	102	DWJC, Guard Building, Entrance to Elec Rm Layer 3 White	Asbestos Fibres Not Detected 95 -100 % Non-fibrous	Nov 18 2011 LP 30 %	GN ---
102 . 4	102	DWJC, Guard Building, Entrance to Elec Rm Layer 4 Beige-Brown Fibrous	Asbestos Fibres Not Detected 95 -100 % Cellulose Fibres > 1 % Non-fibrous	Nov 18 2011 LP 10 %	GN ---

Wes-Har

Asbestos Analysis & Consulting Ltd.

Bulk Asbestos Report

For EBA Engineering Cons. Ltd. [Yukon]

Location : Faro Mine Site [W23101482]

Project : W23101482

11040	23101482	Sample Location / Description	Result(s)	Analyzed	Analyst ACM
102 . 5	102	DWJC, Guard Building, Entrance to Elec Rm Layer 5 White Patches	Asbestos Fibres Not Detected 1 - 5 % Fibrous Glass > 95 % Non-fibrous	Nov 18 2011	GN --- LP 20 %
103 . 1	103	DWJC, Guard Building, Electrical Rm Layer 1 White / Coating * Layer Subjected To An Ashing Procedure	Asbestos Fibres Not Detected 95 -100 % Non-fibrous	Nov 18 2011	GN --- LP 5 %
103 . 2	103	DWJC, Guard Building, Electrical Rm Layer 2 Cream Fibrous	Asbestos Fibres Not Detected 95 -100 % Cellulose Fibres > 1 % Non-fibrous	Nov 18 2011	GN --- LP 15 %
103 . 3	103	DWJC, Guard Building, Electrical Rm Layer 3 White * Layer Subjected To An Ashing Procedure	Asbestos Fibres Not Detected 95 -100 % Non-fibrous	Nov 18 2011	GN --- LP 30 %
103 . 4	103	DWJC, Guard Building, Electrical Rm Layer 4 Beige-Brown Fibrous	Asbestos Fibres Not Detected 95 -100 % Cellulose Fibres > 1 % Non-fibrous	Nov 18 2011	GN --- LP 30 %
103 . 5	103	DWJC, Guard Building, Electrical Rm Layer 5 White Patches	Asbestos Fibres Not Detected 1 - 5 % Fibrous Glass > 95 % Non-fibrous	Nov 18 2011	GN --- LP 20 %
104 . 1	104	DWJC, Guard Building, Hot Water Tank Rm Layer 1 White / Coating	Asbestos Fibres Not Detected 95 -100 % Non-fibrous	Nov 18 2011	GN --- LP 35 %
104 . 2	104	DWJC, Guard Building, Hot Water Tank Rm Layer 2 Cream Fibrous	Asbestos Fibres Not Detected 95 -100 % Cellulose Fibres > 1 % Non-fibrous	Nov 18 2011	GN --- LP 10 %
104 . 3	104	DWJC, Guard Building, Hot Water Tank Rm Layer 3 White	Asbestos Fibres Not Detected 95 -100 % Non-fibrous	Nov 18 2011	GN --- LP 30 %

Lab File 11040
Client Id : 23101482

Unit 170 2188 No. 5 Road Richmond British Columbia V6X 2T1 (604) - 279 - 9445

American Industrial Hygiene Association BAPAT Lab. Id. No. 149340

Client Reference Id: W23101482

Wes-Har

Asbestos Analysis & Consulting Ltd.

Bulk Asbestos Report

For EBA Engineering Cons. Ltd. [Yukon]

Location : Faro Mine Site [W23101482]

Project : W23101482

11040	23101482	Sample Location / Description	Result(s)	Analyzed	Analyst ACM
104 . 4	104	DWJC, Guard Building, Hot Water Tank Rm Layer 4 Beige-Brown Fibrous	Asbestos Fibres Not Detected 95 -100 % Cellulose Fibres > 1 % Non-fibrous	Nov 18 2011 LP 20 %	GN ---
104 . 5	104	DWJC, Guard Building, Hot Water Tank Rm Layer 5 White Patches	Asbestos Fibres Not Detected 1 - 5 % Fibrous Glass > 95 % Non-fibrous	Nov 18 2011 LP 5 %	GN ---
105 . 1	105	DWJC, Guard Building, Top Stairs 2nd Floor Layer 1 White / Coating	Asbestos Fibres Not Detected 95 -100 % Non-fibrous	Nov 18 2011 LP 75 %	GN ---
105 . 2	105	DWJC, Guard Building, Top Stairs 2nd Floor Layer 2 Cream Fibrous	Asbestos Fibres Not Detected 95 -100 % Cellulose Fibres > 1 % Non-fibrous	Nov 18 2011 LP 20 %	GN ---
105 . 3	105	DWJC, Guard Building, Top Stairs 2nd Floor Layer 3 White	Asbestos Fibres Not Detected 95 -100 % Non-fibrous	Nov 18 2011 LP 5 %	GN ---
106 . 1	106	DWJC, Guard Building, 2nd Floor Office Layer 1 White / Coating	Asbestos Fibres Not Detected 95 -100 % Non-fibrous	Nov 18 2011 LP 99 %	GN ---
106 . 2	106	DWJC, Guard Building, 2nd Floor Office Layer 2 White Fibrous Patch	Asbestos Fibres Not Detected 95 -100 % Cellulose Fibres > 1 % Non-fibrous	Nov 18 2011 LP 1 %	GN ---
107 . 1	107	DWJC, Guard Building, 2nd Floor Office Layer 1 White / Coating	Asbestos Fibres Not Detected 95 -100 % Non-fibrous	Nov 18 2011 LP 90 %	GN ---
107 . 2	107	DWJC, Guard Building, 2nd Floor Office Layer 2 White Fibrous Patch	Asbestos Fibres Not Detected 95 -100 % Cellulose Fibres > 1 % Non-fibrous	Nov 18 2011 LP 10 %	GN ---

Lab File 11040
Client Id : 23101482

Unit 170 2188 No. 5 Road Richmond British Columbia V6X 2T1 (604) - 279 - 9445

American Industrial Hygiene Association BAPAT Lab. Id. No. 149340

Client Reference Id: W23101482

Wes-Har

Asbestos Analysis & Consulting Ltd.

Bulk Asbestos Report

For EBA Engineering Cons. Ltd. [Yukon]

Location : Faro Mine Site [W23101482]

Project : W23101482

11040	23101482	Sample Location / Description	Result(s)	Analyzed	Analyst ACM
108 . 1	108	DWJC, Guard Building, 2nd Floor Office Layer 1 Colourless Bead Caulking * Layer Subjected To An Ashing Procedure	Asbestos Fibres Not Detected 95 -100 % Non-fibrous	Nov 18 2011	GN --- LP 35 %
108 . 2	108	DWJC, Guard Building, 2nd Floor Office Layer 2 Beige-Brown Fibrous	Asbestos Fibres Not Detected 90 - 95 % Cellulose Fibres > 5 % Non-fibrous	Nov 18 2011	GN --- LP 35 %
108 . 3	108	DWJC, Guard Building, 2nd Floor Office Layer 3 White Patches	Asbestos Fibres Not Detected 1 - 5 % Fibrous Glass > 95 % Non-fibrous	Nov 18 2011	GN --- LP 30 %
109 . 1	109	DWJC, Guard Building, 2nd Floor Server Rm Layer 1 White / Coating	Asbestos Fibres Not Detected 95 -100 % Non-fibrous	Nov 18 2011	GN --- LP 35 %
109 . 2	109	DWJC, Guard Building, 2nd Floor Server Rm Layer 2 Cream Fibrous	Asbestos Fibres Not Detected 95 -100 % Cellulose Fibres > 1 % Non-fibrous	Nov 18 2011	GN --- LP 10 %
109 . 3	109	DWJC, Guard Building, 2nd Floor Server Rm Layer 3 White * Layer Subjected To An Ashing Procedure	Asbestos Fibres Not Detected 95 -100 % Non-fibrous	Nov 18 2011	GN --- LP 25 %
109 . 4	109	DWJC, Guard Building, 2nd Floor Server Rm Layer 4 Beige-BRown Fibrous	Asbestos Fibres Not Detected 95 -100 % Cellulose Fibres > 1 % Non-fibrous	Nov 18 2011	GN --- LP 20 %
109 . 5	109	DWJC, Guard Building, 2nd Floor Server Rm Layer 5 White Patches	Asbestos Fibres Not Detected 1 - 5 % Fibrous Glass > 95 % Non-fibrous	Nov 18 2011	GN --- LP 10 %
110 . 1	110	DWJC, Guard Building, 2nd Floor Hallway Layer 1 White / Coating * Layer Subjected To An Ashing Procedure	Asbestos Fibres Not Detected 95 -100 % Non-fibrous	Nov 18 2011	GN --- LP 25 %

Lab File 11040
Client Id : 23101482

Unit 170 2188 No. 5 Road Richmond British Columbia V6X 2T1 (604) - 279 - 9445

American Industrial Hygiene Association BAPAT Lab. Id. No. 149340

Client Reference Id: W23101482

Wes-Har

Asbestos Analysis & Consulting Ltd.

Bulk Asbestos Report

For EBA Engineering Cons. Ltd. [Yukon]

Location : Faro Mine Site [W23101482]

Project : W23101482

11040	23101482	Sample Location / Description	Result(s)	Analyzed	Analyst ACM
110 . 2	110	DWJC, Guard Building, 2nd Floor Hallway Layer 2 Cream Fibrous	Asbestos Fibres Not Detected 95 -100 % Cellulose Fibres > 1 % Non-fibrous	Nov 18 2011 LP 10 %	GN ---
110 . 3	110	DWJC, Guard Building, 2nd Floor Hallway Layer 3 White * Layer Subjected To An Ashing Procedure	Asbestos Fibres Not Detected 95 -100 % Non-fibrous	Nov 18 2011 LP 20 %	GN ---
110 . 4	110	DWJC, Guard Building, 2nd Floor Hallway Layer 4 Beige-Brown Fibrous	Asbestos Fibres Not Detected 95 -100 % Cellulose Fibres > 1 % Non-fibrous	Nov 18 2011 LP 10 %	GN ---
110 . 5	110	DWJC, Guard Building, 2nd Floor Hallway Layer 5 White	Asbestos Fibres Not Detected 1 - 5 % Fibrous Glass > 95 % Non-fibrous	Nov 18 2011 LP 35 %	GN ---
111 . 1	111	DWJC, Guard Building, 2nd Floor Training Rm Layer 1 White / Coating * Layer Subjected To An Ashing Procedure	Asbestos Fibres Not Detected 95 -100 % Non-fibrous	Nov 18 2011 LP 35 %	GN ---
111 . 2	111	DWJC, Guard Building, 2nd Floor Training Rm Layer 2 Cream Fibrous	Asbestos Fibres Not Detected 95 -100 % Cellulose Fibres > 1 % Non-fibrous	Nov 18 2011 LP 30 %	GN ---
111 . 3	111	DWJC, Guard Building, 2nd Floor Training Rm Layer 3 White	Asbestos Fibres Not Detected 95 -100 % Non-fibrous	Nov 18 2011 LP 35 %	GN ---
112	112	DWJC, Guard Building, 2nd Floor Training Rm	Asbestos Fibres Not Detected 95 -100 % Non-fibrous	Nov 18 2011	GN ---
113 . 1	113	DWJC, Guard Building, 2nd Floor Office Layer 1 White / Coating	Asbestos Fibres Not Detected 95 -100 % Non-fibrous	Nov 18 2011 LP 99 %	GN ---

Wes-Har Asbestos Analysis & Consulting Ltd.

Bulk Asbestos Report
For EBA Engineering Cons. Ltd. [Yukon]
Location : Faro Mine Site [W23101482]
Project : W23101482

11040	23101482	Sample Location / Description	Result(s)	Analyzed	Analyst ACM
113 . 2	113	DWJC, Guard Building, 2nd Floor Office Layer 2 White Fibrous Patch	Asbestos Fibres Not Detected 95 -100 % Cellulose Fibres > 1 % Non-fibrous	Nov 18 2011	GN --- LP 1 %
114	114	DWJC, Guard Building, 2nd Floor Office	Asbestos Fibres Not Detected 95 -100 % Non-fibrous	Nov 18 2011	GN ---
115 . 1	115	DWJC, Guard Building, 2nd Floor Office Layer 1 White / Coating	Asbestos Fibres Not Detected 95 -100 % Non-fibrous	Nov 18 2011	GN --- LP 35 %
115 . 2	115	DWJC, Guard Building, 2nd Floor Office Layer 2 Cream Fibrous	Asbestos Fibres Not Detected 95 -100 % Cellulose Fibres > 1 % Non-fibrous	Nov 18 2011	GN --- LP 15 %
115 . 3	115	DWJC, Guard Building, 2nd Floor Office Layer 3 White * Layer Subjected To An Ashing Procedure	Asbestos Fibres Not Detected 95 -100 % Non-fibrous	Nov 18 2011	GN --- LP 20 %
115 . 4	115	DWJC, Guard Building, 2nd Floor Office Layer 4 Beige-Brown Fibrous	Asbestos Fibres Not Detected 95 -100 % Cellulose Fibres > 1 % Non-fibrous	Nov 18 2011	GN --- LP 25 %
115 . 5	115	DWJC, Guard Building, 2nd Floor Office Layer 5 White	Asbestos Fibres Not Detected 1 - 5 % Fibrous Glass > 95 % Non-fibrous	Nov 18 2011	GN --- LP 5 %

Comments

Samples Analyzed In Accordance With The NIOSH ASBESTOS (bulk) by PLM Method 9002 [15 August 1994]
 Quantitation Limit For Asbestos Analysis Is 1 %
 ACM Means Asbestos Containing Material; T - Present
 LP - Means Percent : Layer or Phase of Whole Sample
 DNQ - Means Detected Not Quantitated
 Samples Submitted Will Be Retained For 30 Days After Receipt And Will Be Disposed Of Thereafter Unless Otherwise Notified In Writing
 Sample Submitted By EBA Engineering Cons. Ltd. [Yukon]

November 18, 2011 [Facsimile]

G. Nawrocki

Analyst

G. Nawrocki

Reviewed By

 Lab File 11040
 Client Id : 23101482

 Unit 170 2188 No. 5 Road Richmond British Columbia V6X 2T1 (604) - 279 - 9445
 American Industrial Hygiene Association BAPAT Lab. Id. No. 149340

Client Reference Id: W23101482

APPENDIX D

APPENDIX D LEAD BASED PAINT AND PCB (ANALYTICAL CERTIFICATES)



EBA ENGINEERING CONSULTANTS LTD.
ATTN: Shane Dooley
Calcite Business Centre
Unit 6 - 151 Industrial Road
Whitehorse YT Y1A 2V3

Date Received: 07-NOV-11
Report Date: 30-NOV-11 11:59 (MT)
Version: FINAL REV. 2

Client Phone: 867-668-2071

Certificate of Analysis

Lab Work Order #: L1081922
Project P.O. #: W23101482
Job Reference: W23101482
C of C Numbers: 10-055057
Legal Site Desc:

Comments: ADDITIONAL 24-NOV-11 15:18

30-NOV-11: This report replaces the previously reported L1081922 and includes additional analyses.

Brent Mack
Account Manager

[This report shall not be reproduced except in full without the written authority of the Laboratory.]

ADDRESS: 8081 Lougheed Hwy, Suite 100, Burnaby, BC V5A 1W9 Canada | Phone: +1 604 253 4188 | Fax: +1 604 253 6700
ALS CANADA LTD Part of the ALS Group A Campbell Brothers Limited Company

ALS ENVIRONMENTAL ANALYTICAL REPORT

		Sample ID	L1081922-1	L1081922-2	L1081922-3	L1081922-4	L1081922-5
		Description	SOLID	SOLID	SOLID	SOLID	SOLID
		Sampled Date	24-OCT-11	24-OCT-11	24-OCT-11	24-OCT-11	24-OCT-11
		Sampled Time					
		Client ID	1482-1001 BLUE INTERIOR	1482-1002 SILVER INTERIOR	1482-1003 RED INTERIOR	1482-1004 YELLOW INTERIOR	1482-1005 BLUE INTERIOR
Grouping	Analyte						
BULK							
Metals	Lead (Pb) (mg/kg)		6800	4930	35300	3250	302

ALS ENVIRONMENTAL ANALYTICAL REPORT

		Sample ID	L1081922-6	L1081922-7	L1081922-8	L1081922-9	L1081922-10
		Description	SOLID	SOLID	SOLID	SOLID	SOLID
		Sampled Date	24-OCT-11	25-OCT-11	25-OCT-11	25-OCT-11	25-OCT-11
		Sampled Time					
		Client ID	1482-1006 BEIGE INTERIOR	1482-1007 GREY INTERIOR	1482-1008 BEIGE INTERIOR	1482-1009 GREEN EXTERIOR	1482-1010 BLUE INTERIOR
Grouping	Analyte						
BULK							
Metals	Lead (Pb) (mg/kg)		292	5830	372	5400	6560

ALS ENVIRONMENTAL ANALYTICAL REPORT

Grouping	Analyte	Sample ID Description Sampled Date Sampled Time Client ID	L1081922-11 SOLID 25-OCT-11 1482-1011 BEIGE INTERIOR				
BULK							
Metals	Lead (Pb) (mg/kg)		1310				

ALS ENVIRONMENTAL ANALYTICAL REPORT

	Sample ID Description Sampled Date Sampled Time Client ID	L1081922-12 SOLID 28-OCT-11 1482 - EBA - FARO - 001				
Grouping	Analyte					
PRODUCT						
Polychlorinated Biphenyls	Total Polychlorinated Biphenyls (mg/kg)	2.8				

ALS ENVIRONMENTAL ANALYTICAL REPORT

	Sample ID Description Sampled Date Sampled Time Client ID	L1081922-1 SOLID 24-OCT-11 1482-1001 BLUE INTERIOR	L1081922-2 SOLID 24-OCT-11 1482-1002 SILVER INTERIOR	L1081922-3 SOLID 24-OCT-11 1482-1003 RED INTERIOR	L1081922-4 SOLID 24-OCT-11 1482-1004 YELLOW INTERIOR	L1081922-5 SOLID 24-OCT-11 1482-1005 BLUE INTERIOR
Grouping	Analyte					
WASTE						
TCLP Metals	Lead (Pb)-Leachable (ug/L)	1920	<500	6980	5540	<500

ALS ENVIRONMENTAL ANALYTICAL REPORT

Sample ID Description Sampled Date Sampled Time Client ID	L1081922-6 SOLID 24-OCT-11 1482-1006 BEIGE INTERIOR	L1081922-7 SOLID 25-OCT-11 1482-1007 GREY INTERIOR	L1081922-8 SOLID 25-OCT-11 1482-1008 BEIGE INTERIOR	L1081922-9 SOLID 25-OCT-11 1482-1009 GREEN EXTERIOR	L1081922-10 SOLID 25-OCT-11 1482-1010 BLUE INTERIOR	
Grouping	Analyte					
WASTE						
TCLP Metals	Lead (Pb)-Leachable (ug/L)	<500	14400	1430	12400	19100

ALS ENVIRONMENTAL ANALYTICAL REPORT

Grouping	Analyte	Sample ID Description Sampled Date Sampled Time Client ID	L1081922-11 SOLID 25-OCT-11 1482-1011 BEIGE INTERIOR				
WASTE							
TCLP Metals	Lead (Pb)-Leachable (ug/L)		1980				

Reference Information

Test Method References:

ALS Test Code	Matrix	Test Description	Method Reference**
PB-200.2-ICP-ED	Bulk	Lead in Paint by ICPOES	EPA 200.2/6010B
PB-TCLP-ED	Waste	Leachable Lead (Pb), TCLP	SW 846 -1311/6020-ICPMS on TCLP Leachate
PCB-OIL-LL-ECD-VA	Product	PCBs in Oil by GCECD	EPA METHODS 3540, 3620, 3630, 3665, 8082

This analysis is carried out using procedures adapted from the American Society for Testing Materials (ASTM), Method D4059, and from "Test Methods for Evaluating Solid Waste" SW-846, Methods 3500, 3620, 3660, 3665 & 8082, published by the United States Environmental Protection Agency (EPA). The procedure involves extraction of a subsample of the oil with hexane or toluene followed by one or more of the following clean-up procedures (if required): florisol clean-up, C18 reversed phase clean-up, sulphur clean-up and/or sulphuric acid clean-up. The final extract is analysed by capillary column gas chromatography with electron capture detection (GC/ECD).

PCB-SUM-CALC-VA Product Total PCBs in oil CALCULATION

Calculation of Total PCB. Total PCB is the sum of the concentrations of PCB aroclors 1016, 1221, 1232, 1242, 1248, 1254, 1260, 1262, and 1268. Results below detection limit (DL) are treated as zero. The Total PCB detection limit is equal to the highest of the aroclor detection limits used in the sum.

** ALS test methods may incorporate modifications from specified reference methods to improve performance.

The last two letters of the above test code(s) indicate the laboratory that performed analytical analysis for that test. Refer to the list below:

Laboratory Definition Code	Laboratory Location
ED	ALS ENVIRONMENTAL - EDMONTON, ALBERTA, CANADA
VA	ALS ENVIRONMENTAL - VANCOUVER, BC, CANADA

Chain of Custody Numbers:

10-055057

GLOSSARY OF REPORT TERMS

Surrogate - A compound that is similar in behaviour to target analyte(s), but that does not occur naturally in environmental samples. For applicable tests, surrogates are added to samples prior to analysis as a check on recovery.

mg/kg - milligrams per kilogram based on dry weight of sample.

mg/kg wwt - milligrams per kilogram based on wet weight of sample.

mg/kg lwt - milligrams per kilogram based on lipid-adjusted weight of sample.

mg/L - milligrams per litre.

< - Less than.

D.L. - The reported Detection Limit, also known as the Limit of Reporting (LOR).

N/A - Result not available. Refer to qualifier code and definition for explanation.

Test results reported relate only to the samples as received by the laboratory.

UNLESS OTHERWISE STATED, ALL SAMPLES WERE RECEIVED IN ACCEPTABLE CONDITION.

Analytical results in unsigned test reports with the DRAFT watermark are subject to change, pending final QC review.

