

# YUKON TERRITORIES

## MOUNT NANSEN GOLD AND SILVER MINE

DRAWING LIST			
DRAWING NUMBER	DESCRIPTION	REV.	DATE
20112890-00-3-101	GENERAL NOTES	1	2011/11/16
20112890-00-3-102	GENERAL ARRANGEMENT	1	2011/11/16
20112890-00-3-103	ABUTMENT DETAILS	1	2011/11/16
20112890-00-3-104	DECK DETAILS	1	2011/11/16

# MOUNT NANSEN BRIDGE AT DIVERSION CHANNEL EMERGENCY BRIDGE REPAIR

AE Project Number: 20112890-00

THE INFORMATION CONTAINED ON THIS DRAWING,  
OTHER THAN CHANGES MADE BY  
ASSOCIATED ENGINEERING (B.C.) LTD.  
ORIGINATED FROM SOURCES OTHER THAN  
THE DESIGN PROFESSIONAL AND  
ASSOCIATED ENGINEERING (B.C.) LTD.,  
DOES NOT WARRANT OR REPRESENT THAT SUCH  
INFORMATION IS ACCURATE OR REPRESENTS THE  
ORIGINAL DESIGN AS CONTAINED IN THE  
CONTRACT DOCUMENTS.

RECORD  
DRAWING



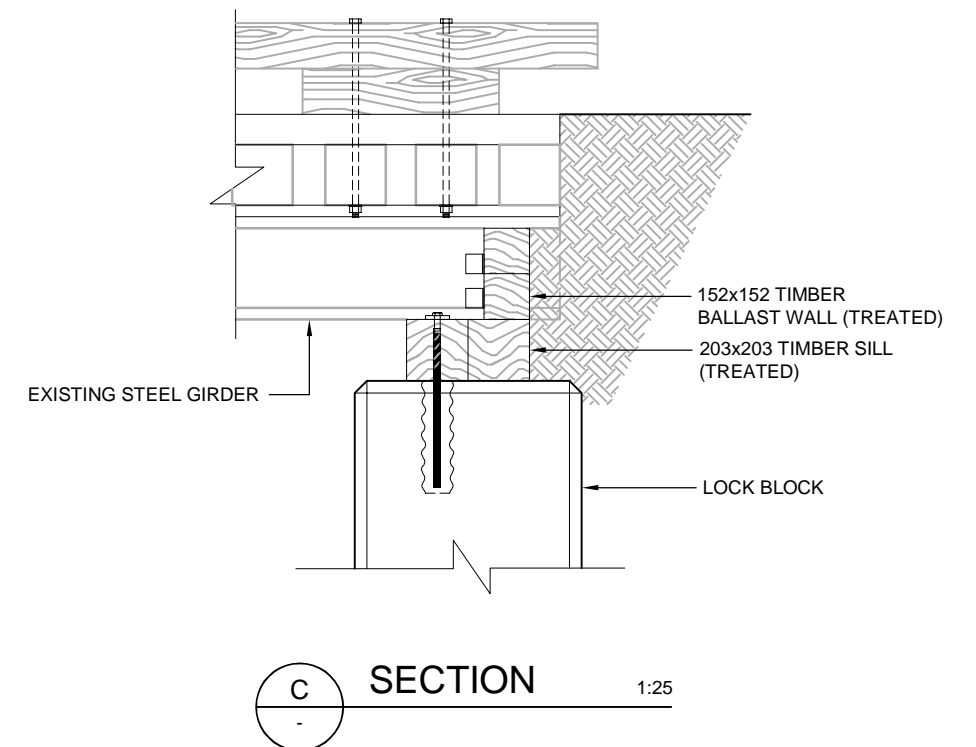
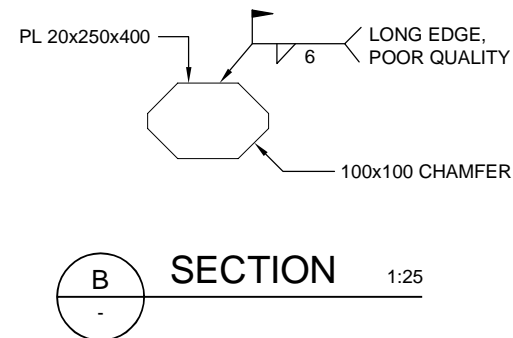
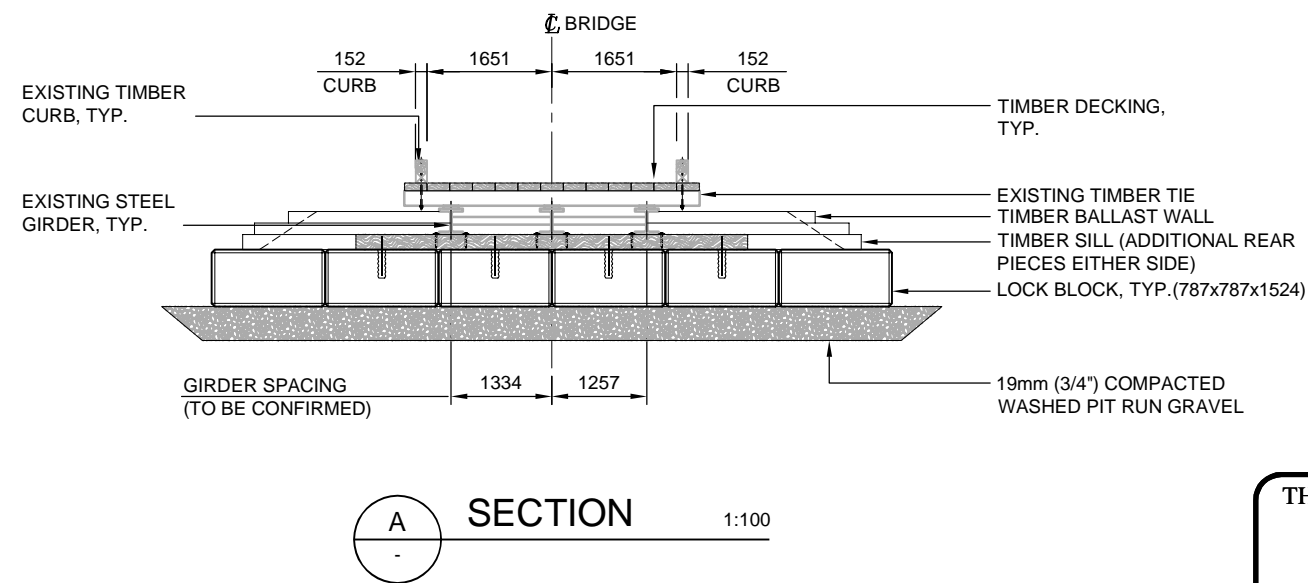
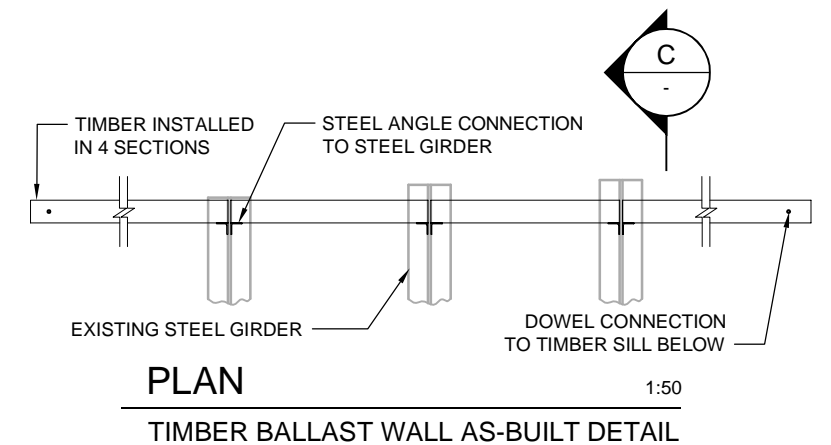
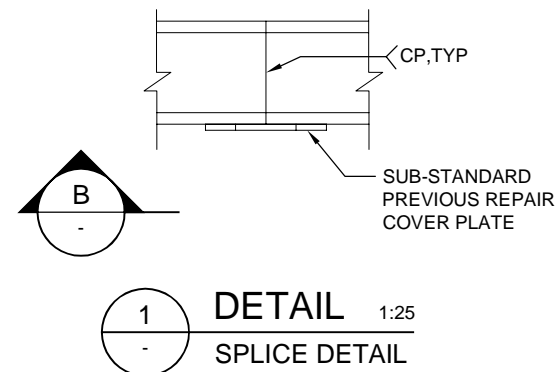
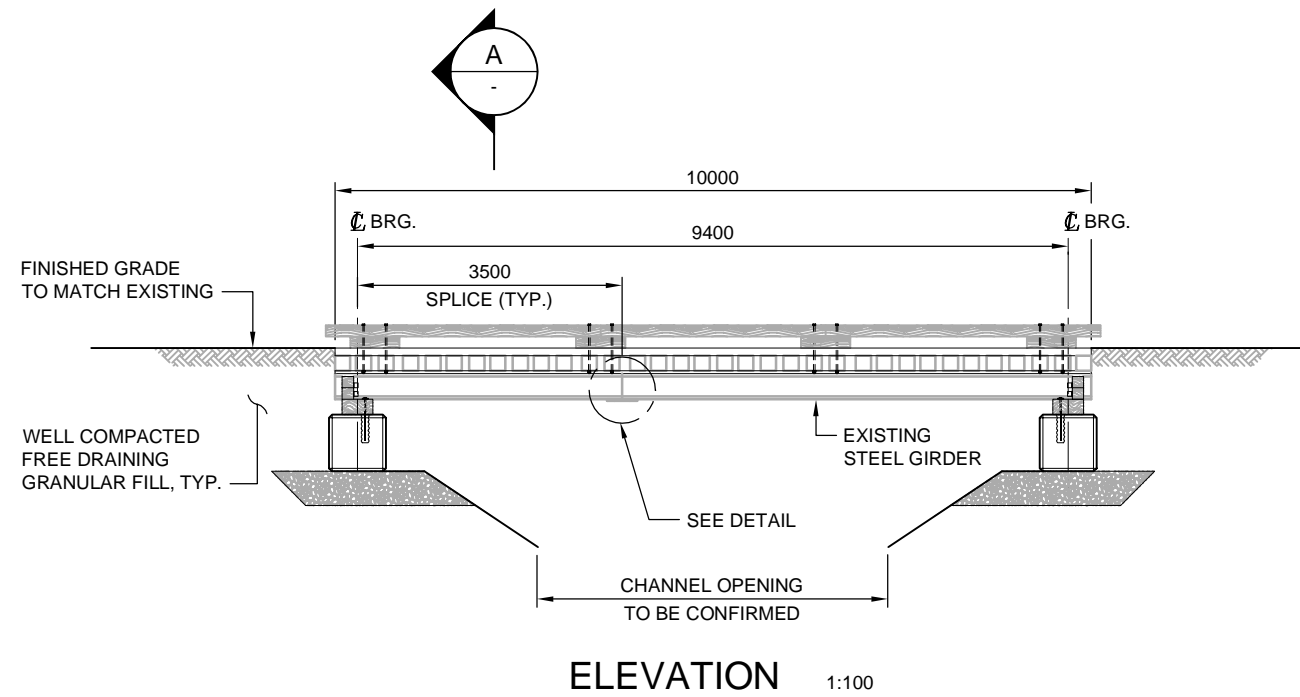
**Associated  
Engineering**

*GLOBAL PERSPECTIVE.  
LOCAL FOCUS.*

DRAWING NUMBER	REV. NO.	SHEET
20112890-00-3-100	1	1 / 5



This Drawing is For The Use Of The Client And Project Indicated  
No Representations Of Any Kind Are Made To Other Parties



THE INFORMATION CONTAINED ON THIS DRAWING, OTHER THAN CHANGES MADE BY ASSOCIATED ENGINEERING (B.C.) LTD. ORIGINATED FROM SOURCES OTHER THAN THE DESIGN PROFESSIONAL AND ASSOCIATED ENGINEERING (B.C.) LTD., DOES NOT WARRANT OR REPRESENT THAT SUCH INFORMATION IS ACCURATE OR REPRESENTS THE ORIGINAL DESIGN AS CONTAINED IN THE CONTRACT DOCUMENTS.

RECORD DRAWING

P:\2011\2890\_00\_Mount Nansen Bridge Repair - Design\2011\2890\_00\_3\_102.dwg  
DATE: 11/16/2011 2:28:39 PM  
C:\Users\Catherine.Zhuang

NO.	DATE	ENG.	BY	SUBJECT
1	2011/11/16	C.S.	C.Z.	RECORD DRAWING
0	2011/09/22	J.H.	W.R.	ISSUED FOR CONSTRUCTION
REVISIONS				

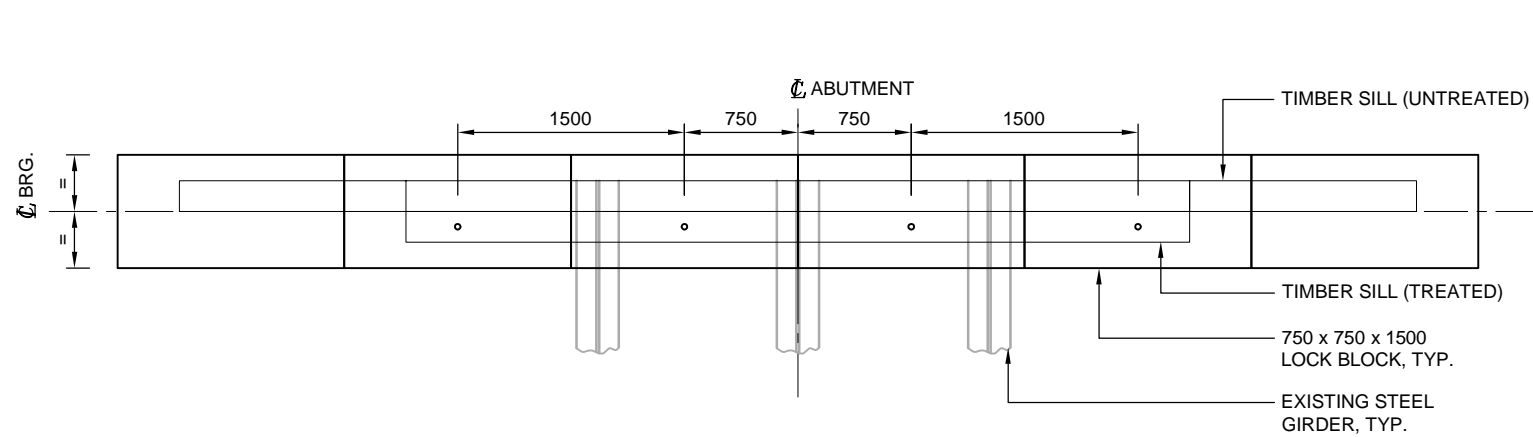


PROJECT No.	20112890-00		
SCALE	AS SHOWN		
DRAWN	CATHERINE ZHUANG		2011/11/16
DESIGNED	JULIEN HENLEY		2011/09/22
CHECKED	CRAIG SCHAPER		2011/11/16
APPROVED			
DATE		INITIAL	

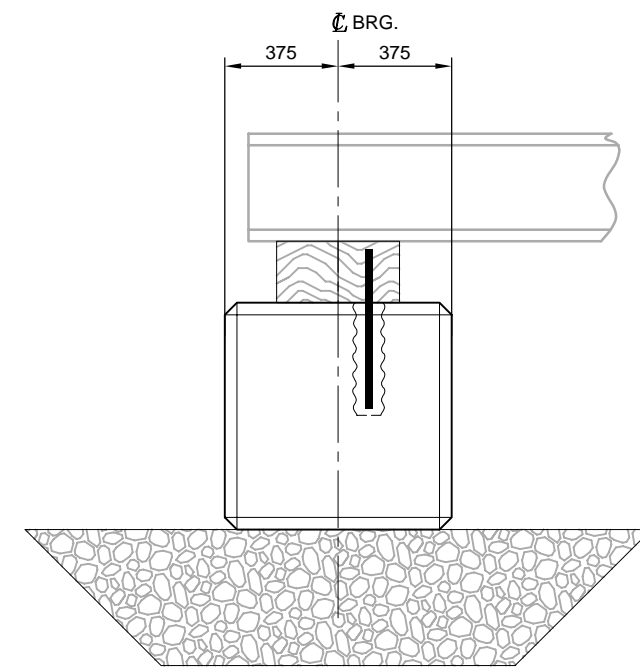
YUKON TERRITORIES MOUNT NANSEN GOLD & SILVER MINE	
GENERAL ARRANGEMENT	

MOUNT NANSEN BRIDGE AT DIVERSION CHANNEL EMERGENCY BRIDGE REPAIR		
DRAWING NUMBER	REV. NO.	SHEET
20112890-00-3-102	1	3/5

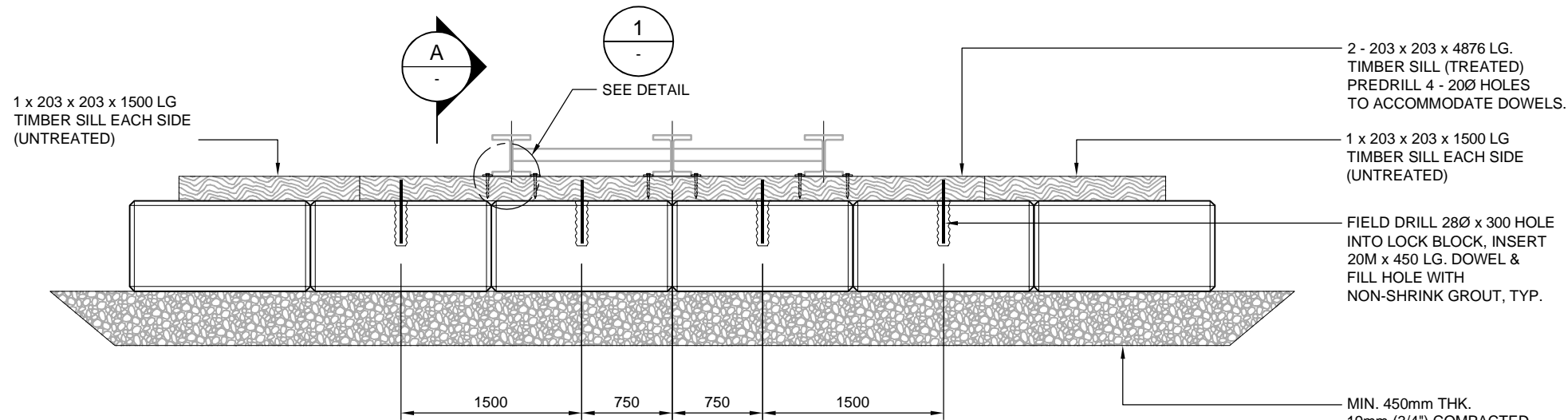
This Drawing is For The Use Of The Client And Project Indicated. No Representations Of Any Kind Are Made To Other Parties.



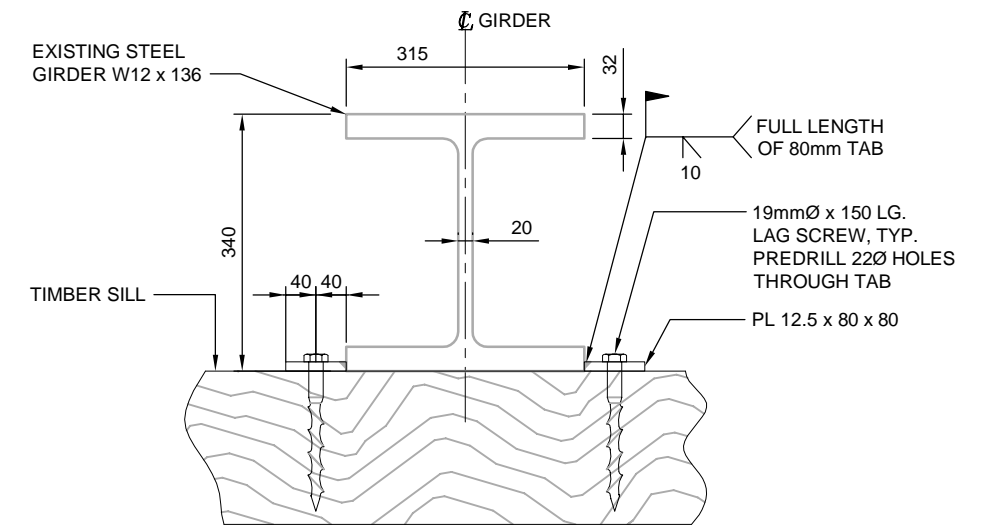
**PLAN**  
ABUTMENT, SEAT/SILL INTERFACE  
1:50



**SECTION A**  
1:25



**ELEVATION**  
ABUTMENT  
1:50



**DETAIL 1**  
STEEL GIRDER TO TIMBER SILL CONNECTION  
1:10

THE INFORMATION CONTAINED ON THIS DRAWING, OTHER THAN CHANGES MADE BY ASSOCIATED ENGINEERING (B.C.) LTD. ORIGINATED FROM SOURCES OTHER THAN THE DESIGN PROFESSIONAL AND ASSOCIATED ENGINEERING (B.C.) LTD., DOES NOT WARRANT OR REPRESENT THAT SUCH INFORMATION IS ACCURATE OR REPRESENTS THE ORIGINAL DESIGN AS CONTAINED IN THE CONTRACT DOCUMENTS.

RECORD DRAWING

P:\2011\2890\_00\_Mount Nansen Gold & Silver Mine\Drawings\20112890\_00\_3\_103.dwg DATE: 11/16/2011 2:28:37 PM C:\Users\Zhuang

NO.	DATE	ENG.	BY	SUBJECT
1	2011/11/16	C.S.	C.Z.	RECORD DRAWING
0	2011/09/22	J.H.	W.R.	ISSUED FOR CONSTRUCTION
REVISIONS				

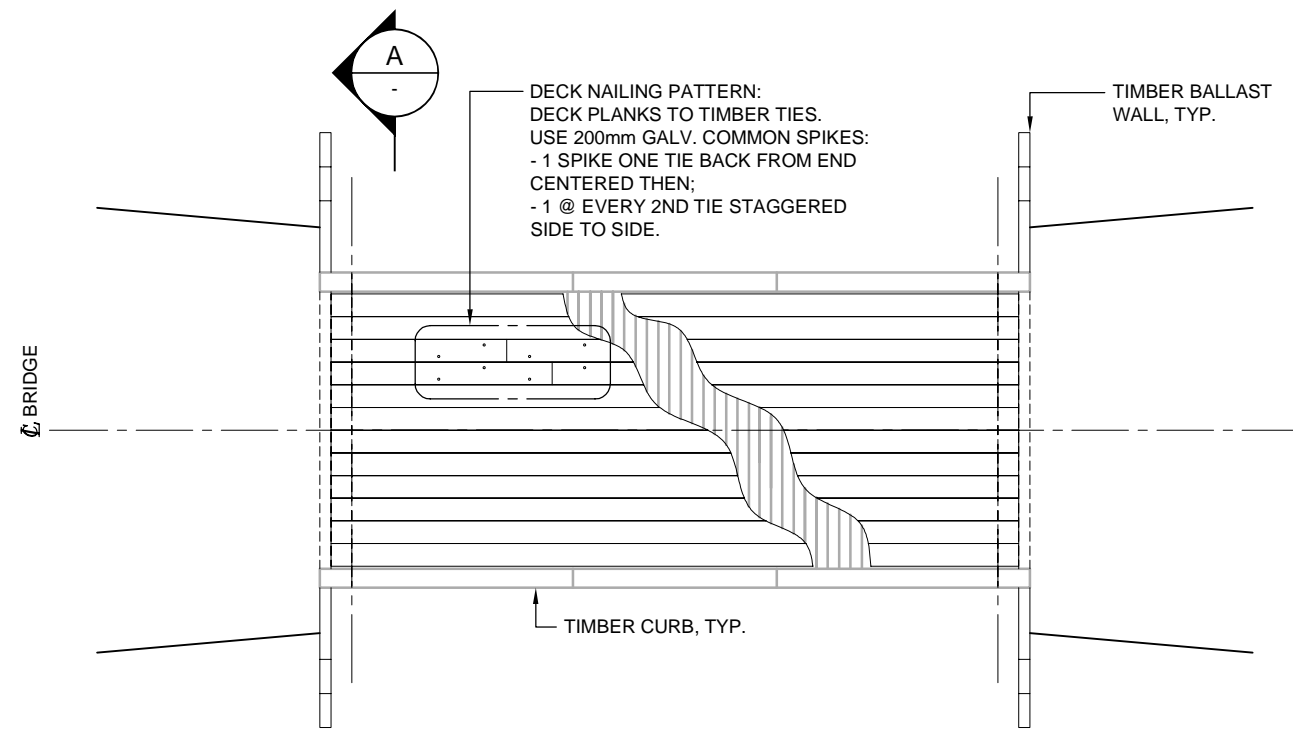


PROJECT No.	20112890-00	
SCALE	AS SHOWN	
DRAWN	CATHERINE ZHUANG	2011/11/16
DESIGNED	JULIEN HENLEY	2011/09/22
CHECKED	CRAIG SCHAPER	2011/11/16
APPROVED		
DATE		INITIAL

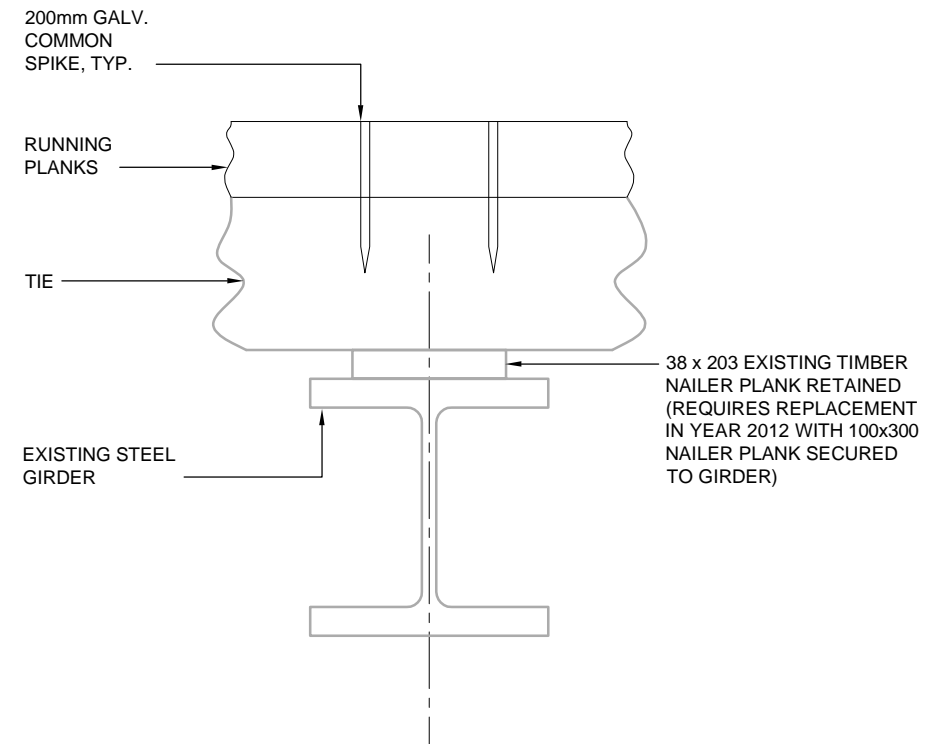
YUKON TERRITORIES	
MOUNT NANSEN GOLD & SILVER MINE	
ABUTMENT DETAILS	

MOUNT NANSEN BRIDGE AT DIVERSION CHANNEL EMERGENCY BRIDGE REPAIR		
DRAWING NUMBER	REV. NO.	SHEET
20112890-00-3-103	1	4/5

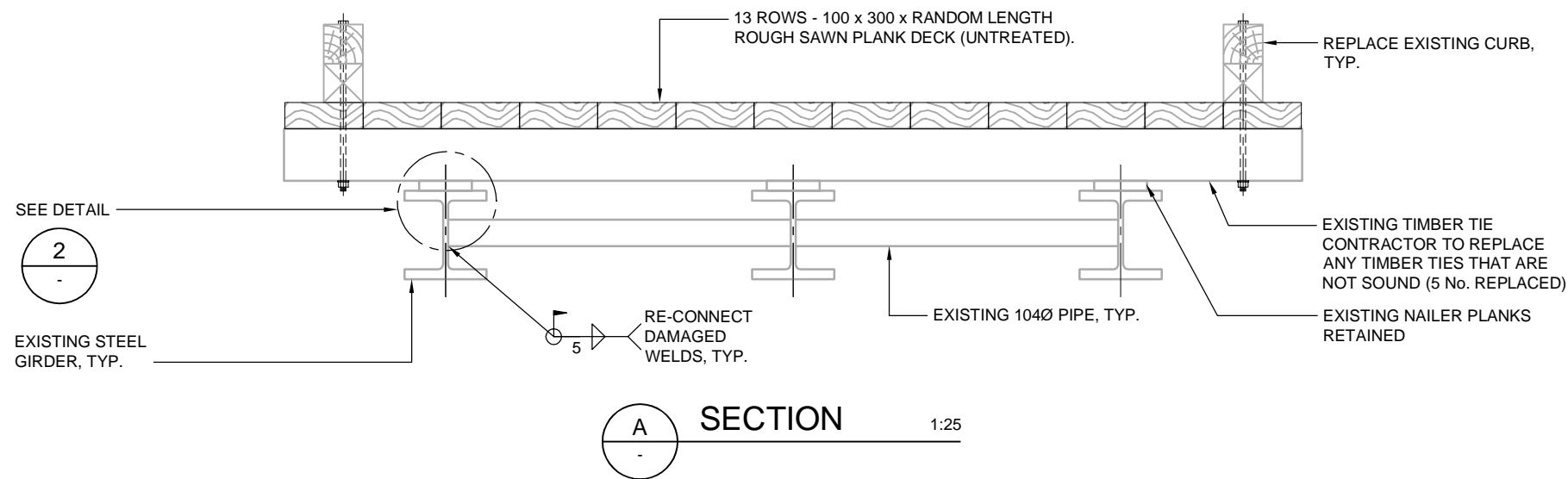
This Drawing is For The Use Of The Client And Project Indicated. No Representations Of Any Kind Are Made To Other Parties.



PLAN 1:100



2 DETAIL 1:10  
STEEL GIRDER TO TIMBER TIE CONNECTION



A SECTION 1:25

RECORD DRAWING

THE INFORMATION CONTAINED ON THIS DRAWING, OTHER THAN CHANGES MADE BY ASSOCIATED ENGINEERING (B.C.) LTD. ORIGINATED FROM SOURCES OTHER THAN THE DESIGN PROFESSIONAL AND ASSOCIATED ENGINEERING (B.C.) LTD., DOES NOT WARRANT OR REPRESENT THAT SUCH INFORMATION IS ACCURATE OR REPRESENTS THE ORIGINAL DESIGN AS CONTAINED IN THE CONTRACT DOCUMENTS.

PROJECT: 20112890-00 Mount Nansen Bridge Emergency Repair; DRAWING: 20112890-00-3-104; DATE: 11/16/2011 12:28:39 PM; C:\Users\zhuang\Documents\20112890-00-3-104.dwg

NO.	DATE	ENG.	BY	SUBJECT
1	2011/11/16	C.S.	C.Z.	RECORD DRAWING
0	2011/09/22	J.H.	W.R.	ISSUED FOR CONSTRUCTION
REVISIONS				



PROJECT No.	20112890-00	
SCALE	AS SHOWN	
DRAWN	CATHERINE ZHUANG	2011/11/16
DESIGNED	JULIEN HENLEY	2011/09/22
CHECKED	CRAIG SCHAPER	2011/11/16
APPROVED		
DATE		INITIAL

YUKON TERRITORIES MOUNT NANSEN GOLD & SILVER MINE
DECK DETAILS

MOUNT NANSEN BRIDGE AT DIVERSION CHANNEL EMERGENCY BRIDGE REPAIR		
DRAWING NUMBER	REV. NO.	SHEET
20112890-00-3-104	1	5/5