

Curbs:

- Curbs are not reliable. However, if the road is built up at the approach, the client may accept the current situation of the curb for the temporary period during the winter until to be replaced in the next phase. [Post-inspection note: The pictures took by client later than this inspection show that the curbs have been replaced.]

Miscellaneous:

All dimensions including girder spacing, girders dimensions, and weld splices were measured for future references.

Inspection pictures



Mount Nansen Bridge - Overview



Mount Nansen Bridge - Elevation



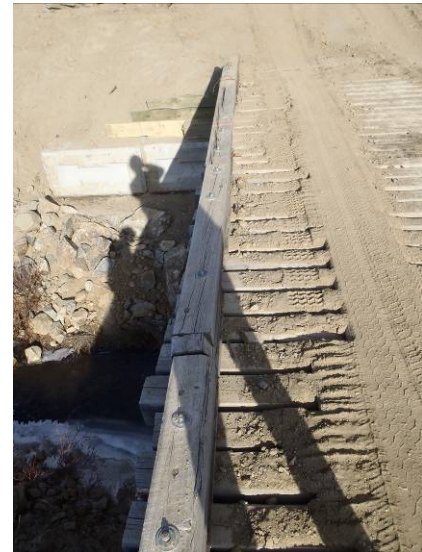
Downstream View



Upstream View



Deck surface



Parapet – Longitudinal cracks



Damaged parapet - Upstream



Damaged parapet - Downstream



Fixed timber ballast wall



Timber ballast wall – loose and non-treated end-timber blocks



Steel girder to outer ballast wall connection



Steel girder to inner ballast wall connection



Steel pipe diaphragm – welding in bad condition



Weld splice in girder



Steel girders



Underside of bridge



Deteriorated timber plank between top of steel girder and deck



Poor quality previous weld repair



Concrete lock blocks



Loose soil in the embankment sides