

February 10, 2014

EDI Job Number: 13-Y-0452

Assessment and Abandoned Mines  
Yukon Government  
Box 2703  
Whitehorse, YT

Attention: Adrienne Turcotte, Project Officer

**Re: Faro Rose Creek Surface and Groundwater Sampling Field Program – Trip 10**

In response to an urgent request by Assessment and Abandoned Mines (AAM), EDI Environmental Dynamics Inc. (EDI) has been conducting on-going water quality sampling and fish telemetry surveys at the Faro Mine Site since November 2013. Table 1, attached, summarizes the field trips completed. The intent of this memo is to summarize field data obtained during the January 28 to 29, 2014 field program, referred to as Trip 10.

The objective of Trip 10 was to complete the following tasks:

- Surface water sampling in Rose Creek at 11 sites, including QA/QC samples; and,
- Fish telemetry surveys of South Fork, Pumphouse pond, Rose Creek diversion channel, lower North Fork and NF1 Pond, from the access roads.

Weather conditions on January 28, 2014 were relatively mild, with air temperatures near -8°C and clear skies. Ten of the 11 sites were sampled; NF2-A was frozen to bed. The crew was able to collect in-situ data at all sites sampled. Overflow at the time of sampling was limited at NF1 Pond allowing the crew to walk on the ice and collect samples away from the shore.

Field data collected at each surface water sampling site is summarized in Table 2, attached. Figure 1 provides the locations of all water quality sampling. Representative photos of each site and the ALS laboratory analytical reports for all water chemistry samples submitted during this field trip are also attached.

Results of the fish radio telemetry surveys conducted January 28 and 29, 2014 indicate only 3 of 10 tags typically found in NF1 Pond were at this location (Figure 2). These missing tags may not have been detected due to signal disruption in the layered ice or the fish may have moved upstream into the stream channel. Of the three tags detected, two were inactive (157 and 160), indicating possible mortalities. Tag 168 in NF1 Pond was detected as inactive on January 28 and active on January 29, indicating very little



motion. Tag 180, in the South Fork, continues to be detected as inactive, suggesting fish mortality. A survey of the Rose Creek diversion channel was conducted; however, Tag 173 and Tag 184 which have been regularly detected within the area could not be located. Additional surveys were conducted throughout the South Fork, Pumphouse Pond, and Rose Creek diversion channel including an additional survey downstream of X14 into Rose Creek with no success. Tag's 173 and 184 appear to have left site and moved downstream.

A summary of telemetry results, including previous surveys is provided in Table 3. Further investigations will be conducted in the subsequent field trip planned as well as during the Aerial survey scheduled for mid-February.

If you have any questions or concerns, please do not hesitate to contact Pat Tobler or myself at (867) 393-4882 or through email at [mkearns@edynamics.com](mailto:mkearns@edynamics.com).

Yours truly,

**EDI Environmental Dynamics Inc.**

*Submitted via email*

Meighan Kearns, B.Sc., R.P.Bio.  
Aquatic Biologist

Attachments:

- Table 1. Summary of Trips 1 to 10, Faro Mine Site.
- Table 2. Surface water sampling field data, Trip 10, January 28, 2014.
- Table 3. Fish telemetry survey results summary, October 2013 to January 2014.
- Figure 1. Location of surface water sampling, Faro Mine Site, January 28, 2014.
- Figure 2. Location of radio-tags detected during telemetry surveys at the Faro Mine Site, January 29, 2014.
- Photos 1 – 13. Representative site photos.
- ALS Laboratory Analytical Reports



Table 1. Summary of Trips 1 to 10, Faro Mine Site.

| Trip No. | Dates             | General Tasks  |
|----------|-------------------|--|
| 1        | Nov 12 – 14, 2013 | <ul style="list-style-type: none"> <li>Fish telemetry</li> <li>Piezometer water depth measurements</li> <li>Ground water sampling</li> <li>Surface water sampling</li> </ul> |
| 2        | Nov 27 – 30, 2013 | <ul style="list-style-type: none"> <li>Fish telemetry</li> <li>Surface water sampling</li> </ul>   |
| 3        | Dec 10, 2013      | <ul style="list-style-type: none"> <li>Fish telemetry</li> </ul>   |
| 4        | Dec 19 – 20, 2013 | <ul style="list-style-type: none"> <li>Surface water sampling</li> </ul>   |
| 5        | Dec 27, 2013      | <ul style="list-style-type: none"> <li>Surface water sampling</li> </ul>   |
| 6        | Jan 2, 2014       | <ul style="list-style-type: none"> <li>Surface water sampling</li> </ul>   |
| 7        | Jan 7 – 8, 2014   | <ul style="list-style-type: none"> <li>Fish telemetry</li> <li>Surface water sampling</li> </ul>   |
| 8        | Jan 14 – 15, 2014 | <ul style="list-style-type: none"> <li>Surface water sampling</li> <li>Fish telemetry</li> </ul>   |
| 9        | Jan 21, 2014      | <ul style="list-style-type: none"> <li>Surface water sampling</li> </ul>   |
| 10       | Jan 28 – 29, 2014 | <ul style="list-style-type: none"> <li>Surface water sampling</li> <li>Fish telemetry</li> </ul>   |

Table 2. Surface water sampling field data, January 28, 2014.

| Site Name | UTM Location (NAD83/ Zone 8) |          | Sample    |       | QA/ QC Rep. ID | In-situ Parameters |             |       |                 |
|-----------|------------------------------|----------|-----------|-------|----------------|--------------------|-------------|-------|-----------------|
|           | Easting                      | Northing | Date      | Time  |                | Temp (°C)          | SPC (µS/cm) | pH    | Turbidity (NTU) |
| X14       | 579342                       | 6915083  | 28-Jan-14 | 13:15 | -              | 0.2                | 1165        | 7.30  | -               |
| X10       | 579444                       | 6914883  | 28-Jan-14 | 13:35 | -              | 0                  | 146.3       | 7.70  | 2.98            |
| X3A       | 583156                       | 6912541  | 28-Jan-14 | 13:55 | -              | 0                  | 274.2       | 7.69  | 1.50            |
| X2        | 584070                       | 6912771  | 28-Jan-14 | 14:15 | X2-r           | 0                  | 267.9       | 7.43  | 2.99            |
| NF2-A     | 584708                       | 6913035  | 28-Jan-14 | - (a) | - (a)          | - (a)              | - (a)       | - (a) | - (a)           |
| NF2-B     | 584729                       | 6913024  | 28-Jan-14 | 14:40 | -              | 0                  | 241.7       | 7.43  | 1.31            |
| NF2       | 584691                       | 6913012  | 28-Jan-14 | 14:55 | -              | 0                  | 258.0       | 7.40  | 1.32            |
| NF1       | 584964                       | 6913276  | 28-Jan-14 | 15:25 | -              | 0                  | 243.7       | 7.49  | 2.19            |
| R10       | 585106                       | 6913480  | 28-Jan-14 | 16:05 | -              | 0                  | 235.3       | 7.65  | 2.30            |
| R9        | 585228                       | 6913664  | 28-Jan-14 | 16:15 | -              | 0                  | 234.3       | 7.84  | 1.01            |
| R8        | 586298                       | 6914404  | 28-Jan-14 | 16:35 | -              | 0                  | 204.6       | 7.87  | 0.84            |

Where: UTM = Universal Transverse Mercator;  
QA/QC Rep = Quality Assurance/ Quality Control Replicate;  
Temp = water temperature; and,  
SPC = specific conductance.

Notes: <sup>(a)</sup> Site frozen to bottom substrate.



Table 3. Fish telemetry results summary, October 2013 to January 2014.

| Tag ID | Location   | Status                 |                  |                  |                         |                         |                  |                   |
|--------|------------|------------------------|------------------|------------------|-------------------------|-------------------------|------------------|-------------------|
|        |            | Oct 30                 | Trip 1<br>Nov 13 | Trip 2<br>Nov 27 | Trip 3<br>Dec 10        | Trip 7<br>Jan 8         | Trip 8<br>Jan 15 | Trip 10<br>Jan 29 |
| 117    | NF1 Pond   | Active                 | Active           | Unknown          | Unknown                 | -                       | -                | -                 |
| 120    | NF1 Pond   | Active                 | Active           | Unknown          | Active                  | -                       | -                | -                 |
| 121    | NF1 Pond   | Active                 | Active           | Active           | Active                  | -                       | -                | -                 |
| 124    | NF1 Pond   | Active                 | Active           | Active           | Active                  | -                       | -                | -                 |
| 157    | NF1 Pond   | Active                 | Active           | Active           | Active                  | Inactive                | Inactive         | Inactive          |
| 160    | NF1 Pond   | Active                 | ~Active          | Active           | Active                  | Active                  | Inactive         | Inactive          |
| 161    | NF1 Pond   | Active                 | Active           | Active           | Active                  | -                       | -                | -                 |
| 164    | NF1 Pond   | Active                 | Inactive         | Inactive         | Inactive                | Inactive                | -                | -                 |
| 165    | NF1 Pond   | -                      | -                | Active           | -                       | -                       | -                | -                 |
| 168    | NF1 Pond   | Active                 | Active           | Active           | Active                  | Inactive                | Inactive         | Active            |
| 173    | RCD        | Active                 | N/A              | N/A              | Active                  | Active                  | N/A              | -                 |
| 180    | South Fork | Active                 | N/A              | N/A              | Inactive                | Inactive                | Inactive         | Inactive          |
| 184    | PP / RCD   | Active <sup>(PP)</sup> | N/A              | N/A              | Active <sup>(RCD)</sup> | Active <sup>(RCD)</sup> | N/A              | -                 |

**Notes:**

- ~ = status is not certain but likely;
- - = tag was not detected;
- N/A = not applicable, this area was not surveyed;
- PP = Pumphouse Pond;
- RCD = Rose Creek Diversion;
- 'Inactive' status may indicate a fish in resting state or a potential mortality or shed tag;
- 'Unknown' indicates the tag was present but the status (Active/ Inactive) could not be determined.

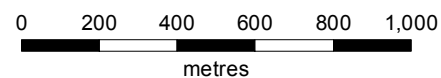
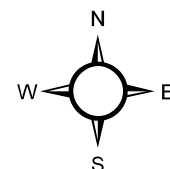


### Location of surface water sampling, Faro Mine Site, January 28, 2014

#### Legend

##### Surface Water Sampling Site

- Sample Collected
- ⊗ Frozen to Bed
- Road (Mine Access/Haul)
- Topographic Contour (30 m Interval)



Map Scale = 1:20,000 (printed on 11 x 17)  
 Map Projection: North American Datum 1983 UTM Zone 8N

#### Data sources

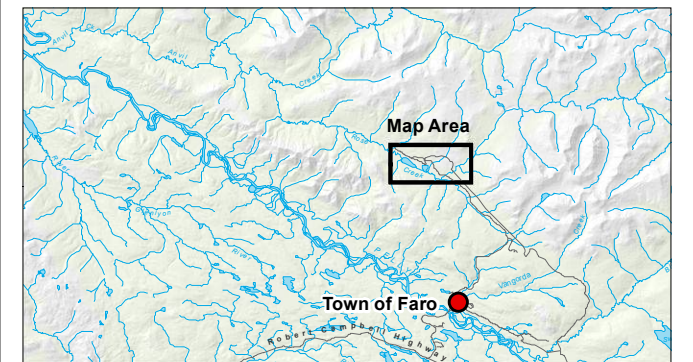
1:50,000 topographic spatial data provided by Geomatics - Yukon Government via online source (Corporate Spatial Warehouse) [www.geomaticsyukon.ca](http://www.geomaticsyukon.ca).

National Road Network courtesy of Her Majesty the Queen in Right of Canada, Department of Natural Resources. All Rights Reserved.

Detailed topographic features of the Faro, Grum and Vangorda mine sites were provided by Yukon Government - Energy, Mines and Resources - Assessment and Abandoned Mines Branch (March 2012).

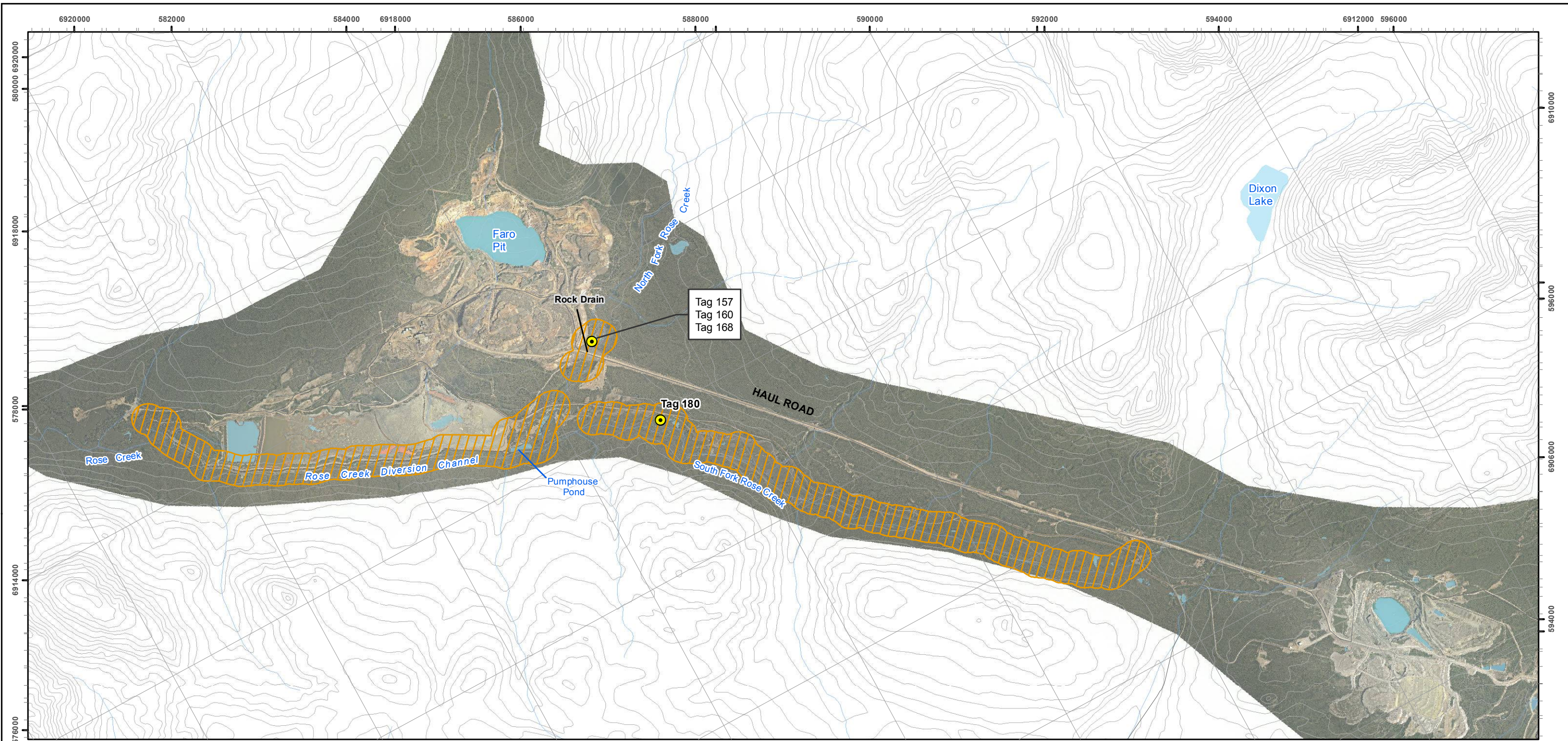
Project data displayed is site specific. Data collected by EDI Environmental Dynamics Inc. was obtained using Garmin GPS technology.

This document is not an official land survey and the spatial data presented is subject to change.





Map Prepared by  
 EDI Environmental Dynamics Inc.

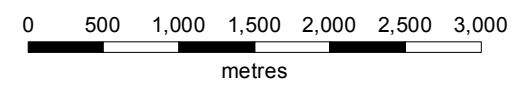
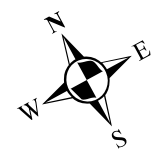
|              |                |          |                  |
|--------------|----------------|----------|------------------|
| Drawn:<br>LG | Checked:<br>MK | FIGURE 1 | Date: 03/02/2014 |
|--------------|----------------|----------|------------------|



**Location of radio-tags detected during telemetry surveys at the Faro Mine Site, January 29, 2014**

**Legend**

-  Location of radio tags detected
-  Approximate extent of telemetry survey (January 29)



Map Scale = 1:50,000 (printed on 11 x 17)  
 Map Projection: North American Datum 1983 UTM Zone 8N

**Data sources**

1:50,000 topographic spatial data provided by Geomatics - Yukon Government via online source (Corporate Spatial Warehouse) [www.geomaticsyukon.ca](http://www.geomaticsyukon.ca).

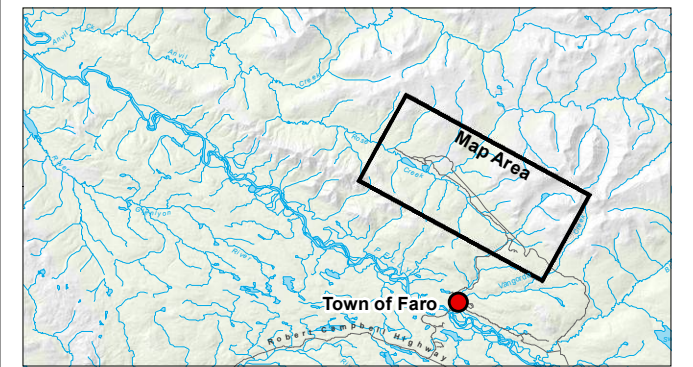
National Road Network courtesy of Her Majesty the Queen in Right of Canada, Department of Natural Resources. All Rights Reserved.

Detailed topographic features of the Faro, Grum and Vangorda mine sites were provided by Yukon Government - Energy, Mines and Resources - Assessment and Abandoned Mines Branch (March 2012).

Project data displayed is site specific. Data collected by EDI Environmental Dynamics Inc. was obtained using Garmin GPS technology.

This document is not an official land survey and the spatial data presented is subject to change.

|              |                |                 |                  |
|--------------|----------------|-----------------|------------------|
| Drawn:<br>LG | Checked:<br>MK | <b>FIGURE 2</b> | Date: 03/02/2014 |
|--------------|----------------|-----------------|------------------|



Map Prepared by  
 EDI Environmental Dynamics Inc.



## Site Photos



Photo 1. Upstream view at surface water sampling site X14, January 28, 2014.



Photo 2. Downstream view at surface water sampling site at X10, January 28, 2014.



Photo 3. Overview at surface water sampling site at X3A, January 28, 2014.



Photo 4. Overview at surface water sampling site at X2, January 28, 2014.



Photo 5. Overview at surface water sampling site at NF2-A frozen to bed, January 28, 2014.



Photo 6. Downstream view at surface water sampling site at NF2-B, January 28, 2014.



Photo 7. Upstream view at surface water sampling site at NF2, January 28, 2014.



Photo 8. Overview at surface water sampling site at NF1, January 28, 2014.



Photo 9. Downstream view at surface water sampling site R10, January 28, 2014.



Photo 10. Downstream view at surface water sampling site R9, January 28, 2014.



Photo 11. Downstream view at surface water sampling site R8, January 28, 2014.



Photo 12. Overview of NF1 Pond from top of rock drain during telemetry survey, January 29, 2014.



Photo 13. Downstream overview of NF2, NF2-A and NF2-B from the haul road during telemetry survey, January 29, 2014.



ENVIRONMENTAL DYNAMICS INC.  
ATTN: Meighan Kearns  
2195 - 2nd Avenue  
Whitehorse YT Y1A 3T8

Date Received: 29-JAN-14  
Report Date: 03-FEB-14 15:21 (MT)  
Version: FINAL

Client Phone: 867-393-4882

## Certificate of Analysis

**Lab Work Order #:** L1417021  
**Project P.O. #:** NOT SUBMITTED  
**Job Reference:** 13-Y-0452  
**C of C Numbers:** 1, 2  
**Legal Site Desc:**

**Comments:** Dissolved organic carbon and dissolved metals analysis was not performed on the sample client identify as "Travel Blank". Generally, only total analysis could be performed on "Travel Blank"

Can Dang  
Senior Account Manager

[This report shall not be reproduced except in full without the written authority of the Laboratory.]

ADDRESS: 8081 Lougheed Hwy, Suite 100, Burnaby, BC V5A 1W9 Canada | Phone: +1 604 253 4188 | Fax: +1 604 253 6700  
ALS CANADA LTD Part of the ALS Group A Campbell Brothers Limited Company

## ALS ENVIRONMENTAL ANALYTICAL REPORT

|                             | Sample ID<br>Description<br>Sampled Date<br>Sampled Time<br>Client ID | L1417021-1<br>Surface Water<br>28-JAN-14<br>13:35<br>X10 | L1417021-2<br>Surface Water<br>28-JAN-14<br>14:40<br>NF2-B | L1417021-3<br>Surface Water<br>28-JAN-14<br>13:15<br>X14 | L1417021-4<br>Surface Water<br>28-JAN-14<br>15:25<br>NF1 | L1417021-5<br>Surface Water<br>28-JAN-14<br>14:15<br>X2 |
|-----------------------------|---|--|--|--|--|---|
| Grouping                    | Analyte   |  |  |  |  |   |
| <b>WATER</b>                |   |  |  |  |  |   |
| <b>Physical Tests</b>       | Conductivity (uS/cm)  | 300  | 261  | 1240   | 277  | 289   |
|                             | Hardness (as CaCO3) (mg/L)  | 162  | 128  | 665  | 129  | 136   |
|                             | pH (pH)   | 8.08   | 8.02   | 7.93   | 8.03   | 7.96  |
|                             | Total Suspended Solids (mg/L)   | <1.0   | <1.0   | 9.7  | <1.0   | <1.0  |
|                             | Total Dissolved Solids (mg/L)   | 176  | 147  | 965  | 152  | 164   |
| <b>Anions and Nutrients</b> | Alkalinity, Total (as CaCO3) (mg/L)                                   | 131  | 124  | 200  | 129  | 126   |
|                             | Ammonia, Total (as N) (mg/L)  | 0.0088   | <0.0050  | 0.275  | 0.0055   | 0.0055  |
|                             | Bromide (Br) (mg/L)   | <0.050   | <0.050   | <0.50 <sup>DLM</sup>                                     | <0.050   | <0.050  |
|                             | Chloride (Cl) (mg/L)  | <0.50  | <0.50  | 5.8  | <0.50  | <0.50   |
|                             | Fluoride (F) (mg/L)   | 0.165  | 0.161  | <0.20 <sup>DLM</sup>                                     | 0.168  | 0.176   |
|                             | Nitrate (as N) (mg/L)   | 0.221  | 0.238  | 0.181  | 0.274  | 0.235   |
|                             | Nitrite (as N) (mg/L)   | 0.0013   | <0.0010  | <0.010 <sup>DLM</sup>                                    | 0.0013   | 0.0012  |
|                             | Phosphorus (P)-Total (mg/L)   | 0.0032   | 0.0050   | <0.0020  | 0.0062   | 0.0045  |
|                             | Sulfate (SO4) (mg/L)  | 32.8   | 20.5   | 565  | 21.2   | 32.5  |
|                             | Anion Sum (meq/L)   | 3.32   | 2.92   | 15.9   | 3.05   | 3.22  |
|                             | Cation Sum (meq/L)  | 3.40   | 2.69   | 14.6   | 2.73   | 2.91  |
|                             | Cation - Anion Balance (%)  | 1.2  | -4.1   | -4.3   | -5.6   | -5.2  |
|                             | <b>Organic / Inorganic Carbon</b>                                     | Dissolved Organic Carbon (mg/L)                          | 1.35   | 1.22   | 1.46   | 1.38  |
| Total Organic Carbon (mg/L) |   | 1.36   | 1.40   | 1.46   | 1.46   | 1.42  |
| <b>Total Metals</b>         | Aluminum (Al)-Total (mg/L)  | 0.0084   | 0.0148   | 0.0300   | 0.0150   | 0.0188  |
|                             | Antimony (Sb)-Total (mg/L)  | <0.00010   | <0.00010   | <0.00020 <sup>DLA</sup>                                  | 0.00011  | <0.00010  |
|                             | Arsenic (As)-Total (mg/L)   | 0.00028  | 0.00052  | 0.00036  | 0.00061  | 0.00048   |
|                             | Barium (Ba)-Total (mg/L)  | 0.0672   | 0.0662   | 0.0533   | 0.0739   | 0.0677  |
|                             | Beryllium (Be)-Total (mg/L)   | <0.00010   | <0.00010   | <0.00020 <sup>DLA</sup>                                  | <0.00010   | <0.00010  |
|                             | Bismuth (Bi)-Total (mg/L)   | <0.00050   | <0.00050   | <0.0010 <sup>DLA</sup>                                   | <0.00050   | <0.00050  |
|                             | Boron (B)-Total (mg/L)  | <0.010   | <0.010   | <0.020 <sup>DLA</sup>                                    | <0.010   | <0.010  |
|                             | Cadmium (Cd)-Total (mg/L)   | 0.000210   | 0.000029   | 0.000190   | 0.000024   | 0.000418  |
|                             | Calcium (Ca)-Total (mg/L)   | 43.5   | 39.4   | 203  | 40.1   | 39.3  |
|                             | Chromium (Cr)-Total (mg/L)  | <0.00010   | 0.00010  | <0.00020 <sup>DLA</sup>                                  | 0.00016  | <0.00010  |
|                             | Cobalt (Co)-Total (mg/L)  | 0.00093  | 0.00017  | 0.0246   | 0.00023  | 0.00264   |
|                             | Copper (Cu)-Total (mg/L)  | <0.00050   | <0.00050   | <0.0010 <sup>DLA</sup>                                   | 0.00058  | <0.00050  |
|                             | Iron (Fe)-Total (mg/L)  | 0.310  | 0.134  | 3.91   | 0.198  | 0.243   |
|                             | Lead (Pb)-Total (mg/L)  | 0.000139   | 0.000273   | 0.00029  | 0.000111   | 0.000289  |
|                             | Lithium (Li)-Total (mg/L)   | 0.00562  | 0.00643  | 0.0105   | 0.00646  | 0.00688   |
|                             | Magnesium (Mg)-Total (mg/L)   | 10.6   | 8.39   | 44.5   | 8.39   | 10.3  |
|                             | Manganese (Mn)-Total (mg/L)   | 0.0928   | 0.0239   | 14.3   | 0.0416   | 0.176   |

\* Please refer to the Reference Information section for an explanation of any qualifiers detected.

## ALS ENVIRONMENTAL ANALYTICAL REPORT

| Sample ID<br>Description<br>Sampled Date<br>Sampled Time<br>Client ID | L1417021-6<br>Surface Water<br>28-JAN-14<br>14:20<br>X2-R | L1417021-7<br>Surface Water<br>28-JAN-14<br>16:05<br>R10 | L1417021-8<br>Surface Water<br>28-JAN-14<br>16:15<br>R9 | L1417021-9<br>Surface Water<br>28-JAN-14<br>16:35<br>R8 | L1417021-10<br>Surface Water<br>28-JAN-14<br>14:55<br>NF2 |          |
|---|---|--|---|---|---|----------|
| <b>Grouping</b>   | <b>Analyte</b>  |  |   |   |   |          |
| <b>WATER</b>  |   |  |   |   |   |          |
| <b>Physical Tests</b>   | Conductivity (uS/cm)                                      | 285  | 258   | 253   | 225   | 274      |
|   | Hardness (as CaCO3) (mg/L)                                | 140  | 138   | 130   | 116   | 142      |
|   | pH (pH)   | 7.91   | 8.10  | 8.18  | 8.18  | 8.02     |
|   | Total Suspended Solids (mg/L)                             | <1.0   | <1.0  | <1.0  | <1.0  | <1.0     |
|   | Total Dissolved Solids (mg/L)                             | 166  | 151   | 147   | 128   | 160      |
| <b>Anions and Nutrients</b>   | Alkalinity, Total (as CaCO3) (mg/L)                       | 128  | 125   | 124   | 119   | 124      |
|   | Ammonia, Total (as N) (mg/L)                              | 0.0051   | 0.0053  | 0.0052  | 0.0067  | <0.0050  |
|   | Bromide (Br) (mg/L)                                       | <0.050   | <0.050  | <0.050  | <0.050  | <0.050   |
|   | Chloride (Cl) (mg/L)                                      | <0.50  | <0.50   | <0.50   | <0.50   | <0.50    |
|   | Fluoride (F) (mg/L)                                       | 0.176  | 0.163   | 0.163   | 0.161   | 0.174    |
|   | Nitrate (as N) (mg/L)                                     | 0.235  | 0.234   | 0.238   | 0.151   | 0.242    |
|   | Nitrite (as N) (mg/L)                                     | <0.0010  | <0.0010   | <0.0010   | 0.0010  | 0.0012   |
|   | Phosphorus (P)-Total (mg/L)                               | 0.0046   | 0.0058  | 0.0063  | 0.0068  | 0.0047   |
|   | Sulfate (SO4) (mg/L)                                      | 32.5   | 19.7  | 19.3  | 9.22  | 27.8     |
|   | Anion Sum (meq/L)   | 3.27   | 2.93  | 2.91  | 2.59  | 3.07     |
|   | Cation Sum (meq/L)  | 2.98   | 2.90  | 2.76  | 2.45  | 3.01     |
|   | Cation - Anion Balance (%)                                | -4.5   | -0.5  | -2.7  | -2.7  | -1.1     |
| <b>Organic / Inorganic Carbon</b>                                     | Dissolved Organic Carbon (mg/L)                           | 1.30   | 1.41  | 1.43  | 1.28  | 1.33     |
|   | Total Organic Carbon (mg/L)                               | 1.41   | 1.47  | 1.37  | 1.36  | 1.33     |
| <b>Total Metals</b>   | Aluminum (Al)-Total (mg/L)                                | 0.0192   | 0.0145  | 0.0199  | 0.0141  | 0.0186   |
|   | Antimony (Sb)-Total (mg/L)                                | <0.00010   | <0.00010  | <0.00010  | <0.00010  | <0.00010 |
|   | Arsenic (As)-Total (mg/L)                                 | 0.00049  | 0.00060   | 0.00057   | 0.00065   | 0.00052  |
|   | Barium (Ba)-Total (mg/L)                                  | 0.0693   | 0.0680  | 0.0665  | 0.0679  | 0.0684   |
|   | Beryllium (Be)-Total (mg/L)                               | <0.00010   | <0.00010  | <0.00010  | <0.00010  | <0.00010 |
|   | Bismuth (Bi)-Total (mg/L)                                 | <0.00050   | <0.00050  | <0.00050  | <0.00050  | <0.00050 |
|   | Boron (B)-Total (mg/L)                                    | <0.010   | <0.010  | <0.010  | <0.010  | <0.010   |
|   | Cadmium (Cd)-Total (mg/L)                                 | 0.000448   | 0.000018  | <0.000010   | <0.000010   | 0.000449 |
|   | Calcium (Ca)-Total (mg/L)                                 | 42.1   | 42.1  | 43.5  | 37.7  | 44.1     |
|   | Chromium (Cr)-Total (mg/L)                                | <0.00010   | 0.00010   | 0.00015   | 0.00011   | 0.00011  |
|   | Cobalt (Co)-Total (mg/L)                                  | 0.00267  | <0.00010  | <0.00010  | <0.00010  | 0.00280  |
|   | Copper (Cu)-Total (mg/L)                                  | <0.00050   | 0.00075   | <0.00050  | <0.00050  | <0.00050 |
|   | Iron (Fe)-Total (mg/L)                                    | 0.246  | 0.143   | 0.161   | 0.167   | 0.193    |
|   | Lead (Pb)-Total (mg/L)                                    | 0.000342   | 0.000087  | 0.000081  | <0.000050   | 0.000290 |
|   | Lithium (Li)-Total (mg/L)                                 | 0.00766  | 0.00716   | 0.00746   | 0.00621   | 0.00700  |
|   | Magnesium (Mg)-Total (mg/L)                               | 10.3   | 8.44  | 7.84  | 6.78  | 9.99     |
|   | Manganese (Mn)-Total (mg/L)                               | 0.175  | 0.0242  | 0.0233  | 0.0221  | 0.153    |

\* Please refer to the Reference Information section for an explanation of any qualifiers detected.

## ALS ENVIRONMENTAL ANALYTICAL REPORT

|                                   | Sample ID<br>Description<br>Sampled Date<br>Sampled Time<br>Client ID | L1417021-11<br>Surface Water<br><br>TRAVEL BLANK | L1417021-12<br>Surface Water<br>28-JAN-14<br>13:55<br>X3A | L1417021-13<br>Surface Water<br>28-JAN-14<br>17:55<br>FIELD BLANK |  |
|-----------------------------------|---|--|---|---|--|
| Grouping                          | Analyte   |  |   |   |  |
| <b>WATER</b>                      |   |  |   |   |  |
| <b>Physical Tests</b>             | Conductivity (uS/cm)  | <2.0   | 289   | <2.0  |  |
|                                   | Hardness (as CaCO3) (mg/L)  | <0.50  | 154   | <0.50   |  |
|                                   | pH (pH)   | 5.76   | 8.02  | 5.67  |  |
|                                   | Total Suspended Solids (mg/L)   | <1.0   | <1.0  | <1.0  |  |
|                                   | Total Dissolved Solids (mg/L)   | <1.0   | 171   | <1.0  |  |
| <b>Anions and Nutrients</b>       | Alkalinity, Total (as CaCO3) (mg/L)                                   | <2.0   | 129   | <2.0  |  |
|                                   | Ammonia, Total (as N) (mg/L)  | <0.0050  | 0.0119  | <0.0050   |  |
|                                   | Bromide (Br) (mg/L)   | <0.050   | <0.050  | <0.050  |  |
|                                   | Chloride (Cl) (mg/L)  | <0.50  | <0.50   | <0.50   |  |
|                                   | Fluoride (F) (mg/L)   | <0.020   | 0.170   | <0.020  |  |
|                                   | Nitrate (as N) (mg/L)   | <0.0050  | 0.234   | <0.0050   |  |
|                                   | Nitrite (as N) (mg/L)   | <0.0010  | 0.0013  | <0.0010   |  |
|                                   | Phosphorus (P)-Total (mg/L)   | <0.0020  | 0.0041  | <0.0020   |  |
|                                   | Sulfate (SO4) (mg/L)  | <0.50  | 31.8  | <0.50   |  |
|                                   | Anion Sum (meq/L)   | <0.10  | 3.27  | <0.10   |  |
|                                   | Cation Sum (meq/L)  | <0.10  | 3.24  | <0.10   |  |
|                                   | Cation - Anion Balance (%)  | 0.0  | -0.4  | 0.0   |  |
| <b>Organic / Inorganic Carbon</b> | Dissolved Organic Carbon (mg/L)                                       |  | 1.48  | <0.50   |  |
|                                   | Total Organic Carbon (mg/L)   | <0.50  | 1.56  | <0.50   |  |
| <b>Total Metals</b>               | Aluminum (Al)-Total (mg/L)  | <0.0030  | 0.0128  | <0.0030   |  |
|                                   | Antimony (Sb)-Total (mg/L)  | <0.00010   | <0.00010  | <0.00010  |  |
|                                   | Arsenic (As)-Total (mg/L)   | <0.00010   | 0.00039   | <0.00010  |  |
|                                   | Barium (Ba)-Total (mg/L)  | <0.000050  | 0.0737  | <0.000050   |  |
|                                   | Beryllium (Be)-Total (mg/L)   | <0.00010   | <0.00010  | <0.00010  |  |
|                                   | Bismuth (Bi)-Total (mg/L)   | <0.00050   | <0.00050  | <0.00050  |  |
|                                   | Boron (B)-Total (mg/L)  | <0.010   | <0.010  | <0.010  |  |
|                                   | Cadmium (Cd)-Total (mg/L)   | <0.000010  | 0.000299  | <0.000010   |  |
|                                   | Calcium (Ca)-Total (mg/L)   | <0.020   | 45.2  | <0.020  |  |
|                                   | Chromium (Cr)-Total (mg/L)  | <0.00010   | 0.00011   | <0.00010  |  |
|                                   | Cobalt (Co)-Total (mg/L)  | <0.00010   | 0.00162   | <0.00010  |  |
|                                   | Copper (Cu)-Total (mg/L)  | <0.00050   | 0.00052   | <0.00050  |  |
|                                   | Iron (Fe)-Total (mg/L)  | <0.010   | 0.270   | <0.010  |  |
|                                   | Lead (Pb)-Total (mg/L)  | <0.000050  | 0.000279  | <0.000050   |  |
|                                   | Lithium (Li)-Total (mg/L)   | <0.00050   | 0.00598   | <0.00050  |  |
|                                   | Magnesium (Mg)-Total (mg/L)   | <0.0050  | 10.2  | <0.0050   |  |
|                                   | Manganese (Mn)-Total (mg/L)   | <0.000050  | 0.144   | <0.000050   |  |

\* Please refer to the Reference Information section for an explanation of any qualifiers detected.

## ALS ENVIRONMENTAL ANALYTICAL REPORT

| Sample ID<br>Description<br>Sampled Date<br>Sampled Time<br>Client ID |                                      | L1417021-1<br>Surface Water<br>28-JAN-14<br>13:35<br>X10 | L1417021-2<br>Surface Water<br>28-JAN-14<br>14:40<br>NF2-B | L1417021-3<br>Surface Water<br>28-JAN-14<br>13:15<br>X14 | L1417021-4<br>Surface Water<br>28-JAN-14<br>15:25<br>NF1 | L1417021-5<br>Surface Water<br>28-JAN-14<br>14:15<br>X2 |
|---|--------------------------------------|--|--|--|--|---|
| Grouping  | Analyte                              |  |  |  |  |   |
| <b>WATER</b>  |                                      |  |  |  |  |   |
| <b>Total Metals</b>   | Molybdenum (Mo)-Total (mg/L)         | 0.000674   | 0.000804   | 0.00071  | 0.000822   | 0.000773  |
|   | Nickel (Ni)-Total (mg/L)             | 0.00282  | 0.00057  | 0.0182 <sup>DLA</sup>                                    | 0.00054  | 0.00434   |
|   | Phosphorus (P)-Total (mg/L)          | <0.30  | <0.30  | <0.60 <sup>DLA</sup>                                     | <0.30  | <0.30   |
|   | Potassium (K)-Total (mg/L)           | 1.04   | 0.932  | 2.80   | 0.962  | 0.981   |
|   | Selenium (Se)-Total (mg/L)           | 0.00041  | 0.00041  | 0.00028  | 0.00041  | 0.00036   |
|   | Silicon (Si)-Total (mg/L)            | 5.65   | 5.83   | 6.50   | 6.02   | 5.77  |
|   | Silver (Ag)-Total (mg/L)             | <0.000010  | <0.000010  | <0.000020 <sup>DLA</sup>                                 | 0.000018   | <0.000010   |
|   | Sodium (Na)-Total (mg/L)             | 2.63   | 2.78   | 12.7   | 2.84   | 2.83  |
|   | Strontium (Sr)-Total (mg/L)          | 0.202  | 0.170  | 0.596 <sup>DLA</sup>                                     | 0.177  | 0.176   |
|   | Thallium (Tl)-Total (mg/L)           | <0.000010  | <0.000010  | <0.000020 <sup>DLA</sup>                                 | <0.000010  | <0.000010   |
|   | Tin (Sn)-Total (mg/L)                | <0.00010   | <0.00010   | <0.00020 <sup>DLA</sup>                                  | <0.00010   | <0.00010  |
|   | Titanium (Ti)-Total (mg/L)           | <0.010   | <0.010   | <0.020 <sup>DLA</sup>                                    | <0.010   | <0.010  |
|   | Uranium (U)-Total (mg/L)             | 0.00246  | 0.00227  | 0.00406 <sup>DLA</sup>                                   | 0.00229  | 0.00226   |
|   | Vanadium (V)-Total (mg/L)            | <0.0010  | <0.0010  | <0.0020 <sup>DLA</sup>                                   | <0.0010  | <0.0010   |
|   | Zinc (Zn)-Total (mg/L)               | 0.395  | 0.0348   | 0.272 <sup>DLA</sup>                                     | 0.0207   | 0.642   |
|   | Zirconium (Zr)-Total (mg/L)          | <0.00080   | <0.00080   | <0.0016 <sup>DLA</sup>                                   | <0.00080   | <0.00080  |
| <b>Dissolved Metals</b>   | Dissolved Metals Filtration Location | FIELD  | FIELD  | FIELD  | FIELD  | FIELD   |
|   | Aluminum (Al)-Dissolved (mg/L)       | 0.0020   | 0.0026   | <0.0020 <sup>DLA</sup>                                   | 0.0025   | 0.0042  |
|   | Antimony (Sb)-Dissolved (mg/L)       | <0.00010   | <0.00010   | <0.00020 <sup>DLA</sup>                                  | <0.00010   | <0.00010  |
|   | Arsenic (As)-Dissolved (mg/L)        | 0.00014  | 0.00038  | <0.00020 <sup>DLA</sup>                                  | 0.00041  | 0.00028   |
|   | Barium (Ba)-Dissolved (mg/L)         | 0.0672   | 0.0669   | 0.0519 <sup>DLA</sup>                                    | 0.0674   | 0.0667  |
|   | Beryllium (Be)-Dissolved (mg/L)      | <0.00010   | <0.00010   | <0.00020 <sup>DLA</sup>                                  | <0.00010   | <0.00010  |
|   | Bismuth (Bi)-Dissolved (mg/L)        | <0.00050   | <0.00050   | <0.0010 <sup>DLA</sup>                                   | <0.00050   | <0.00050  |
|   | Boron (B)-Dissolved (mg/L)           | <0.010   | <0.010   | <0.020 <sup>DLA</sup>                                    | <0.010   | <0.010  |
|   | Cadmium (Cd)-Dissolved (mg/L)        | 0.000193   | 0.000029   | 0.000173   | 0.000018   | 0.000416  |
|   | Calcium (Ca)-Dissolved (mg/L)        | 47.9   | 37.8   | 194 <sup>DLA</sup>                                       | 38.3   | 38.0  |
|   | Chromium (Cr)-Dissolved (mg/L)       | <0.00010   | <0.00010   | <0.00020 <sup>DLA</sup>                                  | <0.00010   | <0.00010  |
|   | Cobalt (Co)-Dissolved (mg/L)         | 0.00089  | 0.00016  | 0.0237 <sup>DLA</sup>                                    | 0.00020  | 0.00257   |
|   | Copper (Cu)-Dissolved (mg/L)         | 0.00030  | 0.00029  | <0.00040 <sup>DLA</sup>                                  | 0.00035  | 0.00029   |
|   | Iron (Fe)-Dissolved (mg/L)           | 0.041  | 0.034  | 3.37 <sup>DLA</sup>                                      | 0.037  | 0.076   |
|   | Lead (Pb)-Dissolved (mg/L)           | <0.000050  | <0.000050  | <0.00010 <sup>DLA</sup>                                  | <0.000050  | <0.000050   |
|   | Lithium (Li)-Dissolved (mg/L)        | 0.00619  | 0.00633  | 0.0099   | 0.00649  | 0.00662   |
|   | Magnesium (Mg)-Dissolved (mg/L)      | 10.3   | 8.08   | 43.6   | 8.16   | 10.0  |
|   | Manganese (Mn)-Dissolved (mg/L)      | 0.0906   | 0.0215   | 14.0   | 0.0364   | 0.171   |
|   | Molybdenum (Mo)-Dissolved (mg/L)     | 0.000778   | 0.000773   | 0.00067  | 0.000784   | 0.000743  |
|   | Nickel (Ni)-Dissolved (mg/L)         | 0.00271  | <0.00050   | 0.0176 <sup>DLA</sup>                                    | <0.00050   | 0.00415   |
|   | Phosphorus (P)-Dissolved (mg/L)      | <0.30  | <0.30  | <0.60 <sup>DLA</sup>                                     | <0.30  | <0.30   |

\* Please refer to the Reference Information section for an explanation of any qualifiers detected.

## ALS ENVIRONMENTAL ANALYTICAL REPORT

| Sample ID<br>Description<br>Sampled Date<br>Sampled Time<br>Client ID |                                      | L1417021-6<br>Surface Water<br>28-JAN-14<br>14:20<br>X2-R | L1417021-7<br>Surface Water<br>28-JAN-14<br>16:05<br>R10 | L1417021-8<br>Surface Water<br>28-JAN-14<br>16:15<br>R9 | L1417021-9<br>Surface Water<br>28-JAN-14<br>16:35<br>R8 | L1417021-10<br>Surface Water<br>28-JAN-14<br>14:55<br>NF2 |
|---|--------------------------------------|---|--|---|---|---|
| Grouping  | Analyte                              |   |  |   |   |   |
| <b>WATER</b>  |                                      |   |  |   |   |   |
| <b>Total Metals</b>   | Molybdenum (Mo)-Total (mg/L)         | 0.000810  | 0.000896   | 0.000925  | 0.000869  | 0.000854  |
|   | Nickel (Ni)-Total (mg/L)             | 0.00429   | <0.00050   | <0.00050  | <0.00050  | 0.00431   |
|   | Phosphorus (P)-Total (mg/L)          | <0.30   | <0.30  | <0.30   | <0.30   | <0.30   |
|   | Potassium (K)-Total (mg/L)           | 0.988   | 0.937  | 0.870   | 0.851   | 0.970   |
|   | Selenium (Se)-Total (mg/L)           | 0.00041   | 0.00044  | 0.00037   | 0.00040   | 0.00039   |
|   | Silicon (Si)-Total (mg/L)            | 5.94  | 5.86   | 5.55  | 6.01  | 5.79  |
|   | Silver (Ag)-Total (mg/L)             | <0.000010   | <0.000010  | <0.000010   | <0.000010   | <0.000010   |
|   | Sodium (Na)-Total (mg/L)             | 2.88  | 2.84   | 2.97  | 2.69  | 2.83  |
|   | Strontium (Sr)-Total (mg/L)          | 0.181   | 0.185  | 0.188   | 0.154   | 0.189   |
|   | Thallium (Tl)-Total (mg/L)           | <0.000010   | <0.000010  | <0.000010   | <0.000010   | <0.000010   |
|   | Tin (Sn)-Total (mg/L)                | <0.00010  | <0.00010   | <0.00010  | <0.00010  | <0.00010  |
|   | Titanium (Ti)-Total (mg/L)           | <0.010  | <0.010   | <0.010  | <0.010  | <0.010  |
|   | Uranium (U)-Total (mg/L)             | 0.00226   | 0.00241  | 0.00250   | 0.00198   | 0.00239   |
|   | Vanadium (V)-Total (mg/L)            | <0.0010   | <0.0010  | <0.0010   | <0.0010   | <0.0010   |
|   | Zinc (Zn)-Total (mg/L)               | 0.648   | 0.0112   | <0.0030   | <0.0030   | 0.672   |
|   | Zirconium (Zr)-Total (mg/L)          | <0.00080  | <0.00080   | <0.00080  | <0.00080  | <0.00080  |
| <b>Dissolved Metals</b>   | Dissolved Metals Filtration Location | FIELD   | FIELD  | FIELD   | FIELD   | FIELD   |
|   | Aluminum (Al)-Dissolved (mg/L)       | 0.0046  | 0.0028   | 0.0027  | 0.0026  | 0.0048  |
|   | Antimony (Sb)-Dissolved (mg/L)       | <0.00010  | <0.00010   | <0.00010  | <0.00010  | <0.00010  |
|   | Arsenic (As)-Dissolved (mg/L)        | 0.00028   | 0.00044  | 0.00039   | 0.00051   | 0.00034   |
|   | Barium (Ba)-Dissolved (mg/L)         | 0.0667  | 0.0685   | 0.0632  | 0.0673  | 0.0698  |
|   | Beryllium (Be)-Dissolved (mg/L)      | <0.00010  | <0.00010   | <0.00010  | <0.00010  | <0.00010  |
|   | Bismuth (Bi)-Dissolved (mg/L)        | <0.00050  | <0.00050   | <0.00050  | <0.00050  | <0.00050  |
|   | Boron (B)-Dissolved (mg/L)           | <0.010  | <0.010   | <0.010  | <0.010  | <0.010  |
|   | Cadmium (Cd)-Dissolved (mg/L)        | 0.000425  | 0.000017   | <0.000010   | <0.000010   | 0.000432  |
|   | Calcium (Ca)-Dissolved (mg/L)        | 38.9  | 41.3   | 39.4  | 35.4  | 41.0  |
|   | Chromium (Cr)-Dissolved (mg/L)       | <0.00010  | <0.00010   | <0.00010  | <0.00010  | <0.00010  |
|   | Cobalt (Co)-Dissolved (mg/L)         | 0.00257   | <0.00010   | <0.00010  | <0.00010  | 0.00271   |
|   | Copper (Cu)-Dissolved (mg/L)         | 0.00031   | 0.00027  | 0.00021   | 0.00027   | 0.00029   |
|   | Iron (Fe)-Dissolved (mg/L)           | 0.078   | 0.038  | 0.036   | 0.064   | 0.080   |
|   | Lead (Pb)-Dissolved (mg/L)           | 0.000061  | <0.000050  | <0.000050   | <0.000050   | 0.000052  |
|   | Lithium (Li)-Dissolved (mg/L)        | 0.00728   | 0.00705  | 0.00689   | 0.00589   | 0.00654   |
|   | Magnesium (Mg)-Dissolved (mg/L)      | 10.4  | 8.39   | 7.72  | 6.65  | 9.58  |
|   | Manganese (Mn)-Dissolved (mg/L)      | 0.172   | 0.0222   | 0.0196  | 0.0205  | 0.148   |
|   | Molybdenum (Mo)-Dissolved (mg/L)     | 0.000786  | 0.000862   | 0.000793  | 0.000808  | 0.000778  |
|   | Nickel (Ni)-Dissolved (mg/L)         | 0.00423   | <0.00050   | <0.00050  | <0.00050  | 0.00409   |
|   | Phosphorus (P)-Dissolved (mg/L)      | <0.30   | <0.30  | <0.30   | <0.30   | <0.30   |

\* Please refer to the Reference Information section for an explanation of any qualifiers detected.

## ALS ENVIRONMENTAL ANALYTICAL REPORT

|                         | Sample ID<br>Description<br>Sampled Date<br>Sampled Time<br>Client ID | L1417021-11<br>Surface Water<br><br>TRAVEL BLANK | L1417021-12<br>Surface Water<br>28-JAN-14<br>13:55<br>X3A | L1417021-13<br>Surface Water<br>28-JAN-14<br>17:55<br>FIELD BLANK |  |
|-------------------------|---|--|---|---|--|
| Grouping                | Analyte   |  |   |   |  |
| <b>WATER</b>            |   |  |   |   |  |
| <b>Total Metals</b>     | Molybdenum (Mo)-Total (mg/L)  | <0.000050  | 0.000726  | <0.000050   |  |
|                         | Nickel (Ni)-Total (mg/L)  | <0.00050   | 0.00317   | <0.00050  |  |
|                         | Phosphorus (P)-Total (mg/L)   | <0.30  | <0.30   | <0.30   |  |
|                         | Potassium (K)-Total (mg/L)  | <0.050   | 1.08  | <0.050  |  |
|                         | Selenium (Se)-Total (mg/L)  | <0.00010   | 0.00039   | <0.00010  |  |
|                         | Silicon (Si)-Total (mg/L)   | <0.050   | 5.88  | <0.050  |  |
|                         | Silver (Ag)-Total (mg/L)  | <0.000010  | <0.000010   | <0.000010   |  |
|                         | Sodium (Na)-Total (mg/L)  | <0.050   | 2.74  | <0.050  |  |
|                         | Strontium (Sr)-Total (mg/L)   | <0.00020   | 0.207   | <0.00020  |  |
|                         | Thallium (Tl)-Total (mg/L)  | <0.000010  | <0.000010   | <0.000010   |  |
|                         | Tin (Sn)-Total (mg/L)   | <0.00010   | <0.00010  | <0.00010  |  |
|                         | Titanium (Ti)-Total (mg/L)  | <0.010   | <0.010  | <0.010  |  |
|                         | Uranium (U)-Total (mg/L)  | <0.000010  | 0.00259   | <0.000010   |  |
|                         | Vanadium (V)-Total (mg/L)   | <0.0010  | <0.0010   | <0.0010   |  |
|                         | Zinc (Zn)-Total (mg/L)  | <0.0030  | 0.463   | <0.0030   |  |
|                         | Zirconium (Zr)-Total (mg/L)   | <0.00080   | <0.00080  | <0.00080  |  |
| <b>Dissolved Metals</b> | Dissolved Metals Filtration Location                                  |  | FIELD   | FIELD   |  |
|                         | Aluminum (Al)-Dissolved (mg/L)  |  | 0.0037  | <0.0010   |  |
|                         | Antimony (Sb)-Dissolved (mg/L)  |  | <0.00010  | <0.00010  |  |
|                         | Arsenic (As)-Dissolved (mg/L)   |  | 0.00021   | <0.00010  |  |
|                         | Barium (Ba)-Dissolved (mg/L)  |  | 0.0689  | <0.000050   |  |
|                         | Beryllium (Be)-Dissolved (mg/L)                                       |  | <0.00010  | <0.00010  |  |
|                         | Bismuth (Bi)-Dissolved (mg/L)   |  | <0.00050  | <0.00050  |  |
|                         | Boron (B)-Dissolved (mg/L)  |  | <0.010  | <0.010  |  |
|                         | Cadmium (Cd)-Dissolved (mg/L)   |  | 0.000281  | <0.000010   |  |
|                         | Calcium (Ca)-Dissolved (mg/L)   |  | 44.7  | <0.020  |  |
|                         | Chromium (Cr)-Dissolved (mg/L)  |  | <0.00010  | <0.00010  |  |
|                         | Cobalt (Co)-Dissolved (mg/L)  |  | 0.00152   | <0.00010  |  |
|                         | Copper (Cu)-Dissolved (mg/L)  |  | 0.00034   | <0.00020  |  |
|                         | Iron (Fe)-Dissolved (mg/L)  |  | 0.095   | <0.010  |  |
|                         | Lead (Pb)-Dissolved (mg/L)  |  | <0.000050   | <0.000050   |  |
|                         | Lithium (Li)-Dissolved (mg/L)   |  | 0.00572   | <0.00050  |  |
|                         | Magnesium (Mg)-Dissolved (mg/L)                                       |  | 10.2  | <0.0050   |  |
|                         | Manganese (Mn)-Dissolved (mg/L)                                       |  | 0.139   | <0.000050   |  |
|                         | Molybdenum (Mo)-Dissolved (mg/L)                                      |  | 0.000678  | <0.000050   |  |
|                         | Nickel (Ni)-Dissolved (mg/L)  |  | 0.00300   | <0.00050  |  |
|                         | Phosphorus (P)-Dissolved (mg/L)                                       |  | <0.30   | <0.30   |  |

\* Please refer to the Reference Information section for an explanation of any qualifiers detected.

## ALS ENVIRONMENTAL ANALYTICAL REPORT

| Sample ID               | Description                     | L1417021-1                                 | L1417021-2                                   | L1417021-3                                 | L1417021-4                                 | L1417021-5                                |
|-------------------------|---------------------------------|--|--|--|--|---|
| Sampled Date            | Sampled Time                    | Surface Water<br>28-JAN-14<br>13:35<br>X10 | Surface Water<br>28-JAN-14<br>14:40<br>NF2-B | Surface Water<br>28-JAN-14<br>13:15<br>X14 | Surface Water<br>28-JAN-14<br>15:25<br>NF1 | Surface Water<br>28-JAN-14<br>14:15<br>X2 |
| Client ID               |                                 |  |  |  |  |   |
| Grouping                | Analyte                         |  |  |  |  |   |
| <b>WATER</b>            |                                 |  |  |  |  |   |
| <b>Dissolved Metals</b> | Potassium (K)-Dissolved (mg/L)  | 1.03                                       | 0.909  | 2.78                                       | 0.935                                      | 0.979                                     |
|                         | Selenium (Se)-Dissolved (mg/L)  | 0.00037                                    | 0.00040                                      | 0.00028                                    | 0.00043                                    | 0.00039                                   |
|                         | Silicon (Si)-Dissolved (mg/L)   | 5.40                                       | 5.67   | 6.18                                       | 5.79                                       | 5.86                                      |
|                         | Silver (Ag)-Dissolved (mg/L)    | <0.000010                                  | <0.000010                                    | <0.000020 <sup>DLA</sup>                   | <0.000010                                  | <0.000010                                 |
|                         | Sodium (Na)-Dissolved (mg/L)    | 2.68                                       | 2.67   | 13.0                                       | 2.74                                       | 2.94                                      |
|                         | Strontium (Sr)-Dissolved (mg/L) | 0.218                                      | 0.171  | 0.601                                      | 0.172                                      | 0.172                                     |
|                         | Thallium (Tl)-Dissolved (mg/L)  | <0.000010                                  | <0.000010                                    | <0.000020 <sup>DLA</sup>                   | <0.000010                                  | <0.000010                                 |
|                         | Tin (Sn)-Dissolved (mg/L)       | <0.00010                                   | <0.00010                                     | <0.00020 <sup>DLA</sup>                    | <0.00010                                   | <0.00010                                  |
|                         | Titanium (Ti)-Dissolved (mg/L)  | <0.010                                     | <0.010                                       | <0.020 <sup>DLA</sup>                      | <0.010                                     | <0.010                                    |
|                         | Uranium (U)-Dissolved (mg/L)    | 0.00289                                    | 0.00210                                      | 0.00402                                    | 0.00230                                    | 0.00219                                   |
|                         | Vanadium (V)-Dissolved (mg/L)   | <0.0010                                    | <0.0010                                      | <0.0020 <sup>DLA</sup>                     | <0.0010                                    | <0.0010                                   |
|                         | Zinc (Zn)-Dissolved (mg/L)      | 0.386                                      | 0.0348                                       | 0.260                                      | 0.0185                                     | 0.644                                     |
|                         | Zirconium (Zr)-Dissolved (mg/L) | <0.00080                                   | <0.00080                                     | <0.0016 <sup>DLA</sup>                     | <0.00080                                   | <0.00080                                  |

\* Please refer to the Reference Information section for an explanation of any qualifiers detected.

## ALS ENVIRONMENTAL ANALYTICAL REPORT

|                         |                                 | Sample ID    | L1417021-6    | L1417021-7    | L1417021-8    | L1417021-9    | L1417021-10   |
|-------------------------|---------------------------------|--------------|---------------|---------------|---------------|---------------|---------------|
|                         |                                 | Description  | Surface Water | Surface Water | Surface Water | Surface Water | Surface Water |
|                         |                                 | Sampled Date | 28-JAN-14     | 28-JAN-14     | 28-JAN-14     | 28-JAN-14     | 28-JAN-14     |
|                         |                                 | Sampled Time | 14:20         | 16:05         | 16:15         | 16:35         | 14:55         |
|                         |                                 | Client ID    | X2-R          | R10           | R9            | R8            | NF2           |
| Grouping                | Analyte                         |              |               |               |               |               |               |
| <b>WATER</b>            |                                 |              |               |               |               |               |               |
| <b>Dissolved Metals</b> | Potassium (K)-Dissolved (mg/L)  |              | 1.00          | 0.926         | 0.850         | 0.842         | 0.940         |
|                         | Selenium (Se)-Dissolved (mg/L)  |              | 0.00038       | 0.00038       | 0.00041       | 0.00040       | 0.00039       |
|                         | Silicon (Si)-Dissolved (mg/L)   |              | 5.83          | 5.82          | 5.71          | 5.91          | 5.87          |
|                         | Silver (Ag)-Dissolved (mg/L)    |              | <0.000010     | <0.000010     | <0.000010     | <0.000010     | <0.000010     |
|                         | Sodium (Na)-Dissolved (mg/L)    |              | 2.93          | 2.75          | 2.97          | 2.59          | 2.76          |
|                         | Strontium (Sr)-Dissolved (mg/L) |              | 0.180         | 0.186         | 0.170         | 0.158         | 0.179         |
|                         | Thallium (Tl)-Dissolved (mg/L)  |              | <0.000010     | <0.000010     | <0.000010     | <0.000010     | <0.000010     |
|                         | Tin (Sn)-Dissolved (mg/L)       |              | <0.000010     | <0.000010     | <0.000010     | <0.000010     | <0.000010     |
|                         | Titanium (Ti)-Dissolved (mg/L)  |              | <0.010        | <0.010        | <0.010        | <0.010        | <0.010        |
|                         | Uranium (U)-Dissolved (mg/L)    |              | 0.00224       | 0.00239       | 0.00236       | 0.00199       | 0.00229       |
|                         | Vanadium (V)-Dissolved (mg/L)   |              | <0.0010       | <0.0010       | <0.0010       | <0.0010       | <0.0010       |
|                         | Zinc (Zn)-Dissolved (mg/L)      |              | 0.648         | 0.0103        | <0.0010       | <0.0010       | 0.662         |
|                         | Zirconium (Zr)-Dissolved (mg/L) |              | <0.00080      | <0.00080      | <0.00080      | <0.00080      | <0.00080      |

\* Please refer to the Reference Information section for an explanation of any qualifiers detected.

# ALS ENVIRONMENTAL ANALYTICAL REPORT

| Sample ID<br>Description<br>Sampled Date<br>Sampled Time<br>Client ID | L1417021-11<br>Surface Water<br><br>TRAVEL BLANK | L1417021-12<br>Surface Water<br>28-JAN-14<br>13:55<br>X3A | L1417021-13<br>Surface Water<br>28-JAN-14<br>17:55<br>FIELD BLANK |           |  |
|---|--|---|---|-----------|--|
| Grouping  | Analyte  |   |   |           |  |
| <b>WATER</b>  |  |   |   |           |  |
| <b>Dissolved Metals</b>   | Potassium (K)-Dissolved (mg/L)                   |   | 1.07  | <0.050    |  |
|   | Selenium (Se)-Dissolved (mg/L)                   |   | 0.00038   | <0.00010  |  |
|   | Silicon (Si)-Dissolved (mg/L)                    |   | 5.64  | <0.050    |  |
|   | Silver (Ag)-Dissolved (mg/L)                     |   | <0.000010   | <0.000010 |  |
|   | Sodium (Na)-Dissolved (mg/L)                     |   | 2.74  | <0.050    |  |
|   | Strontium (Sr)-Dissolved (mg/L)                  |   | 0.205   | <0.00020  |  |
|   | Thallium (Tl)-Dissolved (mg/L)                   |   | <0.000010   | <0.000010 |  |
|   | Tin (Sn)-Dissolved (mg/L)                        |   | <0.00010  | <0.00010  |  |
|   | Titanium (Ti)-Dissolved (mg/L)                   |   | <0.010  | <0.010    |  |
|   | Uranium (U)-Dissolved (mg/L)                     |   | 0.00244   | <0.000010 |  |
|   | Vanadium (V)-Dissolved (mg/L)                    |   | <0.0010   | <0.0010   |  |
|   | Zinc (Zn)-Dissolved (mg/L)                       |   | 0.457   | <0.0010   |  |
|   | Zirconium (Zr)-Dissolved (mg/L)                  |   | <0.00080  | <0.00080  |  |

\* Please refer to the Reference Information section for an explanation of any qualifiers detected.

## Reference Information

## QC Samples with Qualifiers &amp; Comments:

| QC Type Description | Parameter                | Qualifier | Applies to Sample Number(s)                                    |
|---------------------|--------------------------|-----------|--|
| Duplicate           | Bromide (Br)             | DLM       | L1417021-1, -10, -11, -12, -13, -2, -3, -4, -5, -6, -7, -8, -9 |
| Duplicate           | Chloride (Cl)            | DLM       | L1417021-1, -10, -11, -12, -13, -2, -3, -4, -5, -6, -7, -8, -9 |
| Duplicate           | Fluoride (F)             | DLM       | L1417021-1, -10, -11, -12, -13, -2, -3, -4, -5, -6, -7, -8, -9 |
| Duplicate           | Nitrite (as N)           | DLM       | L1417021-1, -10, -11, -12, -13, -2, -3, -4, -5, -6, -7, -8, -9 |
| Matrix Spike        | Barium (Ba)-Dissolved    | MS-B      | L1417021-1, -10, -12, -13, -2, -3, -4, -5, -6, -7, -8, -9      |
| Matrix Spike        | Calcium (Ca)-Dissolved   | MS-B      | L1417021-1, -10, -12, -13, -2, -3, -4, -5, -6, -7, -8, -9      |
| Matrix Spike        | Magnesium (Mg)-Dissolved | MS-B      | L1417021-1, -10, -12, -13, -2, -3, -4, -5, -6, -7, -8, -9      |
| Matrix Spike        | Sodium (Na)-Dissolved    | MS-B      | L1417021-1, -10, -12, -13, -2, -3, -4, -5, -6, -7, -8, -9      |
| Matrix Spike        | Strontium (Sr)-Dissolved | MS-B      | L1417021-1, -10, -12, -13, -2, -3, -4, -5, -6, -7, -8, -9      |
| Matrix Spike        | Uranium (U)-Dissolved    | MS-B      | L1417021-1, -10, -12, -13, -2, -3, -4, -5, -6, -7, -8, -9      |
| Matrix Spike        | Barium (Ba)-Dissolved    | MS-B      | L1417021-1, -10, -12, -13, -2, -3, -4, -5, -6, -7, -8, -9      |
| Matrix Spike        | Calcium (Ca)-Dissolved   | MS-B      | L1417021-1, -10, -12, -13, -2, -3, -4, -5, -6, -7, -8, -9      |
| Matrix Spike        | Magnesium (Mg)-Dissolved | MS-B      | L1417021-1, -10, -12, -13, -2, -3, -4, -5, -6, -7, -8, -9      |
| Matrix Spike        | Strontium (Sr)-Dissolved | MS-B      | L1417021-1, -10, -12, -13, -2, -3, -4, -5, -6, -7, -8, -9      |

## Qualifiers for Individual Parameters Listed:

| Qualifier | Description  |
|-----------|--|
| DLA       | Detection Limit adjusted for required dilution   |
| DLM       | Detection Limit Adjusted due to sample matrix effects.   |
| MS-B      | Matrix Spike recovery could not be accurately calculated due to high analyte background in sample. |

## Test Method References:

| ALS Test Code  | Matrix | Test Description                        | Method Reference**                   |
|--|--------|---|--------------------------------------|
| <b>ALK-COL-VA</b>  | Water  | Alkalinity by Colourimetric (Automated) | EPA 310.2                            |
| This analysis is carried out using procedures adapted from EPA Method 310.2 "Alkalinity". Total Alkalinity is determined using the methyl orange colourimetric method.   |        |   |                                      |
| <b>ANIONS-BR-IC-VA</b>   | Water  | Bromide by Ion Chromatography           | APHA 4110 B.                         |
| This analysis is carried out using procedures adapted from APHA Method 4110 B. "Ion Chromatography with Chemical Suppression of Eluent Conductivity" and EPA Method 300.0 "Determination of Inorganic Anions by Ion Chromatography".       |        |   |                                      |
| <b>ANIONS-CL-IC-VA</b>   | Water  | Chloride by Ion Chromatography          | APHA 4110 B.                         |
| This analysis is carried out using procedures adapted from APHA Method 4110 B. "Ion Chromatography with Chemical Suppression of Eluent Conductivity" and EPA Method 300.0 "Determination of Inorganic Anions by Ion Chromatography".       |        |   |                                      |
| <b>ANIONS-F-IC-VA</b>  | Water  | Fluoride by Ion Chromatography          | APHA 4110 B.                         |
| This analysis is carried out using procedures adapted from APHA Method 4110 B. "Ion Chromatography with Chemical Suppression of Eluent Conductivity" and EPA Method 300.0 "Determination of Inorganic Anions by Ion Chromatography".       |        |   |                                      |
| <b>ANIONS-NO2-IC-VA</b>  | Water  | Nitrite in Water by Ion Chromatography  | EPA 300.0                            |
| This analysis is carried out using procedures adapted from EPA Method 300.0 "Determination of Inorganic Anions by Ion Chromatography". Nitrite is detected by UV absorbance.   |        |   |                                      |
| <b>ANIONS-NO3-IC-VA</b>  | Water  | Nitrate in Water by Ion Chromatography  | EPA 300.0                            |
| This analysis is carried out using procedures adapted from EPA Method 300.0 "Determination of Inorganic Anions by Ion Chromatography". Nitrate is detected by UV absorbance.   |        |   |                                      |
| <b>ANIONS-SO4-IC-VA</b>  | Water  | Sulfate by Ion Chromatography           | APHA 4110 B.                         |
| This analysis is carried out using procedures adapted from APHA Method 4110 B. "Ion Chromatography with Chemical Suppression of Eluent Conductivity" and EPA Method 300.0 "Determination of Inorganic Anions by Ion Chromatography".       |        |   |                                      |
| <b>CARBONS-DOC-VA</b>  | Water  | Dissolved organic carbon by combustion  | APHA 5310 TOTAL ORGANIC CARBON (TOC) |
| This analysis is carried out using procedures adapted from APHA Method 5310 "Total Organic Carbon (TOC)". Dissolved carbon (DOC) fractions are determined by filtering the sample through a 0.45 micron membrane filter prior to analysis. |        |   |                                      |
| <b>CARBONS-TOC-VA</b>  | Water  | Total organic carbon by combustion      | APHA 5310 TOTAL ORGANIC CARBON (TOC) |
| This analysis is carried out using procedures adapted from APHA Method 5310 "Total Organic Carbon (TOC)".  |        |   |                                      |
| <b>EC-PCT-VA</b>   | Water  | Conductivity (Automated)                | APHA 2510 Auto. Conduc.              |
| This analysis is carried out using procedures adapted from APHA Method 2510 "Conductivity". Conductivity is determined using a conductivity electrode.   |        |   |                                      |
| <b>HARDNESS-CALC-VA</b>  | Water  | Hardness                                | APHA 2340B                           |

## Reference Information

Hardness (also known as Total Hardness) is calculated from the sum of Calcium and Magnesium concentrations, expressed in CaCO<sub>3</sub> equivalents. Dissolved Calcium and Magnesium concentrations are preferentially used for the hardness calculation.

**IONBALANCE-VA**            Water            Ion Balance Calculation            APHA 1030E

Cation Sum, Anion Sum, and Ion Balance (as % difference) are calculated based on guidance from APHA Standard Methods (1030E Checking Correctness of Analysis). Because all aqueous solutions are electrically neutral, the calculated ion balance (% difference of cations minus anions) should be near-zero.

Cation and Anion Sums are the total meq/L concentration of major cations and anions. Dissolved species are used where available. Minor ions are included where data is present. Ion Balance is calculated as:

Ion Balance (%) = [Cation Sum-Anion Sum] / [Cation Sum+Anion Sum]

**MET-D-CCMS-VA**            Water            Dissolved Metals in Water by CRC ICPMS            APHA 3030 B&E / EPA SW-846 6020A

This analysis is carried out using procedures adapted from "Standard Methods for the Examination of Water and Wastewater" published by the American Public Health Association, and with procedures adapted from "Test Methods for Evaluating Solid Waste" SW-846 published by the United States Environmental Protection Agency (EPA). The procedures may involve preliminary sample treatment by acid digestion, using hotblock, or filtration (APHA 3030B&E). Instrumental analysis is by collision cell inductively coupled plasma - mass spectrometry (modified from EPA Method 6020A).

**MET-T-CCMS-VA**            Water            Total Metals in Water by CRC ICPMS            APHA 3030 B&E / EPA SW-846 6020A

This analysis is carried out using procedures adapted from "Standard Methods for the Examination of Water and Wastewater" published by the American Public Health Association, and with procedures adapted from "Test Methods for Evaluating Solid Waste" SW-846 published by the United States Environmental Protection Agency (EPA). The procedures may involve preliminary sample treatment by acid digestion, using hotblock, or filtration (APHA 3030B&E). Instrumental analysis is by collision cell inductively coupled plasma - mass spectrometry (modified from EPA Method 6020A).

**NH3-F-VA**            Water            Ammonia in Water by Fluorescence            J. ENVIRON. MONIT., 2005, 7, 37-42, RSC

This analysis is carried out, on sulfuric acid preserved samples, using procedures modified from J. Environ. Monit., 2005, 7, 37 - 42, The Royal Society of Chemistry, "Flow-injection analysis with fluorescence detection for the determination of trace levels of ammonium in seawater", Roslyn J. Waston et al.

**P-T-COL-VA**            Water            Total P in Water by Colour            APHA 4500-P Phosphorous

This analysis is carried out using procedures adapted from APHA Method 4500-P "Phosphorus". Total Phosphorous is determined colourimetrically after persulphate digestion of the sample.

**PH-PCT-VA**            Water            pH by Meter (Automated)            APHA 4500-H "pH Value"

This analysis is carried out using procedures adapted from APHA Method 4500-H "pH Value". The pH is determined in the laboratory using a pH electrode

It is recommended that this analysis be conducted in the field.

**PH-PCT-VA**            Water            pH by Meter (Automated)            APHA 4500-H pH Value

This analysis is carried out using procedures adapted from APHA Method 4500-H "pH Value". The pH is determined in the laboratory using a pH electrode

It is recommended that this analysis be conducted in the field.

**TDS-CALC-VA**            Water            TDS (Calculated)            APHA 1030E (20TH EDITION)

This analysis is carried out using procedures adapted from APHA 1030E "Checking Correctness of Analyses".

**TSS-LOW-VA**            Water            Total Suspended Solids by Grav. (1 mg/L)            APHA 2540 Gravimetric

This analysis is carried out using procedures adapted from APHA Method 2540 "Solids". Solids are determined gravimetrically. Total suspended solids (TSS) are determined by filtering a sample through a glass fibre filter, TSS is determined by drying the filter at 104 degrees celsius.

**ZR-D-MS-VA**            Water            Dissolved Zr in Water by ICPMS            EPA SW-846 3005A/6020A

This analysis is carried out using procedures adapted from "Standard Methods for the Examination of Water and Wastewater" published by the American Public Health Association, and with procedures adapted from "Test Methods for Evaluating Solid Waste" SW-846 published by the United States Environmental Protection Agency (EPA). The procedures may involve preliminary sample treatment by acid digestion, using either hotblock or microwave oven, or filtration (EPA Method 3005A). Instrumental analysis is by inductively coupled plasma - mass spectrometry (EPA Method 6020A).

**ZR-T-MS-VA**            Water            Total Zr in Water by ICPMS            EPA SW-846 3005A/6020A

This analysis is carried out using procedures adapted from "Standard Methods for the Examination of Water and Wastewater" published by the American Public Health Association, and with procedures adapted from "Test Methods for Evaluating Solid Waste" SW-846 published by the United States Environmental Protection Agency (EPA). The procedures may involve preliminary sample treatment by acid digestion, using either hotblock or microwave oven, or filtration (EPA Method 3005A). Instrumental analysis is by inductively coupled plasma - mass spectrometry (EPA Method 6020A).

\*\* ALS test methods may incorporate modifications from specified reference methods to improve performance.

*The last two letters of the above test code(s) indicate the laboratory that performed analytical analysis for that test. Refer to the list below:*

| Laboratory Definition Code | Laboratory Location |
|----------------------------|---------------------|
|----------------------------|---------------------|

## Reference Information

VA

ALS ENVIRONMENTAL - VANCOUVER, BRITISH COLUMBIA, CANADA

---

### Chain of Custody Numbers:

---

1

2

### GLOSSARY OF REPORT TERMS

*Surrogate* - A compound that is similar in behaviour to target analyte(s), but that does not occur naturally in environmental samples. For applicable tests, surrogates are added to samples prior to analysis as a check on recovery.

*mg/kg* - milligrams per kilogram based on dry weight of sample.

*mg/kg wwt* - milligrams per kilogram based on wet weight of sample.

*mg/kg lwt* - milligrams per kilogram based on lipid-adjusted weight of sample.

*mg/L* - milligrams per litre.

*<* - Less than.

*D.L.* - The reported Detection Limit, also known as the Limit of Reporting (LOR).

*N/A* - Result not available. Refer to qualifier code and definition for explanation.

Test results reported relate only to the samples as received by the laboratory.

UNLESS OTHERWISE STATED, ALL SAMPLES WERE RECEIVED IN ACCEPTABLE CONDITION.

Analytical results in unsigned test reports with the DRAFT watermark are subject to change, pending final QC review.



Report To: EDI

Company: Meighan Kearns

Contact: 2195 - 2nd Avenue

Address: Whitehorse, YT Y1A 3T8

Phone: 867-393-4882 Fax: 867-393-4882

Invoice To: Same as Report?  Yes  No

Hardcopy of Invoice with Report?  Yes  No

Company: [Blank]

Contact: [Blank]

Address: [Blank]

Phone: [Blank] Fax: [Blank]

Lab Work Order # (lab-use only): 1417021

ALS Contact: KEARNS

Sampler: CAROL GRIFFIN

Quote #: Q38556

Report Format / Distribution:  Standard  Other  PDF  Excel  Digital  Fax

Email 1: mkearns@edynamics.com

Email 2: adrienne.turcotte@gov.yk.ca

Email 3: [Blank]

Client / Project Information: Job #: 13-Y-0452

PO / AFE: [Blank]

LSD: [Blank]

Service Requested (Rush for routine analysis subject to availability):  Regular (Standard Turnaround Times - Business Days)  Priority (2-4 Business Days) - 50% Surcharge - Contact ALS to Confirm TAT  Emergency (1-2 Bus. Days) - 100% Surcharge - Contact ALS to Confirm TAT  Same Day or Weekend Emergency - Contact ALS to Confirm TAT

Analysis Request: Please indicate below Filtered, Preserved or both (F, P, F/P)

| Sample # | Sample Identification (This description will appear on the report) | Date (dd-mm-yy) | Time (h:mm) | Sample Type   | ALK-COL-VA,P-T-COL-VA | ANIONS-ALL-IC-WR | CARBONS-DOC-VA | CARBONS-TOC-VA,NH3-F- | EC-MAN-WR,PH-MAN-WR | MET-D-CCMS-VA,ZR-D-MS- | MET-T-CCMS-VA,ZR-T-MS- | IONBALANCE-VA | TDS-CALC-VA | TSS-LOW-WR | HARDNESS-CALC-VA | Number of Containers |
|----------|--|-----------------|-------------|---------------|-----------------------|------------------|----------------|-----------------------|---------------------|------------------------|------------------------|---------------|-------------|------------|------------------|----------------------|
| 1        | X10  | 28-JAN-14       | 13:35       | Surface Water | X                     | X                | X              | X                     | X                   | X                      | X                      | X             | X           | X          | X                | 5                    |
| 2        | NF2-B  | 28-JAN-14       | 14:40       | Surface Water | X                     | X                | X              | X                     | X                   | X                      | X                      | X             | X           | X          | X                | 5                    |
| 3        | X14  | 28-JAN-14       | 13:15       | Surface Water | X                     | X                | X              | X                     | X                   | X                      | X                      | X             | X           | X          | X                | 5                    |
| 4        | NF1  | 28-JAN-14       | 15:25       | Surface Water | X                     | X                | X              | X                     | X                   | X                      | X                      | X             | X           | X          | X                | 5                    |
| 5        | X2   | 28-JAN-14       | 14:15       | Surface Water | X                     | X                | X              | X                     | X                   | X                      | X                      | X             | X           | X          | X                | 5                    |
| 6        | X2-r   | 28-JAN-14       | 14:20       | Surface Water | X                     | X                | X              | X                     | X                   | X                      | X                      | X             | X           | X          | X                | 5                    |
|          |  |                 |             | Surface Water | X                     | X                | X              | X                     | X                   | X                      | X                      | X             | X           | X          | X                | 5                    |
|          |  |                 |             | Surface Water | X                     | X                | X              | X                     | X                   | X                      | X                      | X             | X           | X          | X                | 5                    |
|          |  |                 |             | Surface Water | X                     | X                | X              | X                     | X                   | X                      | X                      | X             | X           | X          | X                | 5                    |

Special Instructions / Regulations with water or land use (CCME-Freshwater Aquatic Life/B/C CSR - Commercial/AB)

Use Faro Equis Format to report

L1417021-COFC



Failure to complete all portions of this form may delay analysis. Please fill in this form

By the use of this form the user acknowledges and agrees with the Terms and Conditions as provided.

Also provided on another Excel tab are the ALS location addresses, phone numbers and sample container / preservation / holding time table for common analyses.

SHIPMENT RELEASE (client use)

Released by: [Signature] Date: 29-JAN-14 Time: [Blank]

SHIPMENT RECEPTION (lab use only)

Received by: [Signature] Date: 29-JAN-14 Time: 4:35 Temperature: 15.04°C

SHIPMENT VERIFICATION (lab use only)

Verified by: [Blank] Date: [Blank] Time: [Blank]

Observations: Yes / No ? If Yes add SIF

