

March 31, 2014

EDI Job Number: 13-Y-0452

Assessment and Abandoned Mines  
Yukon Government  
Box 2703, K-419  
Whitehorse, YT Y1A 2C6

Attention: Adrienne Turcotte, Project Officer

**Re: Faro Rose Creek Surface and Groundwater Sampling Field Program – Trip 18**

In response to an urgent request by Assessment and Abandoned Mines (AAM), EDI Environmental Dynamics Inc. (EDI) has been conducting on-going water quality sampling and fish telemetry surveys at the Faro Mine Site since November 2013. Table 1, attached, summarizes the field trips completed. The intent of this memo is to summarize field data obtained during the March 24, 2014 field program, referred to as Trip 18.

The objective of Trip 18 was to conduct surface water sampling at 12 monitoring sites, including QA/QC samples. Figure 1 provides the locations of all sampling sites. Table 2 summarizes field data collected at each sampling site.

Weather conditions on March 25, 2014 were clear skies and sunshine with temperatures near -20°C in the morning and -5°C in the afternoon. As noted in previous trips, samples were collected from NF2-A; however, there did not appear to be any flow at this site. The following sample locations were modified:

- NF1 samples were collected closer to the rock drain; and,
- NF2-B samples were collected approximately 2 m from the original site, towards NF2-A.

Representative photos of each site are attached. ALS laboratory analytical reports for all water chemistry samples submitted during this field trip are attached.



If you have any questions or concerns, please do not hesitate to contact Pat Tobler or myself at (867) 393-4882 or through email at [mkearns@edynamics.com](mailto:mkearns@edynamics.com).

Yours truly,

**EDI Environmental Dynamics Inc.**

*Submitted via email*

Meighan Kearns, B.Sc., R.P.Bio.  
Aquatic Biologist

Attachments:

- Table 1. Summary of Trips 1 to 18, Faro Mine Site.
- Table 2. Surface water sampling field data, Trip 18, March 25, 2014.
- Figure 1. Location of surface water sampling, Faro Mine Site, March 25, 2014.
- Photos 1 – 12. Representative site photos.
- ALS Laboratory Analytical Reports



Table 1. Summary of Trips 1 to 16, Faro Mine Site.

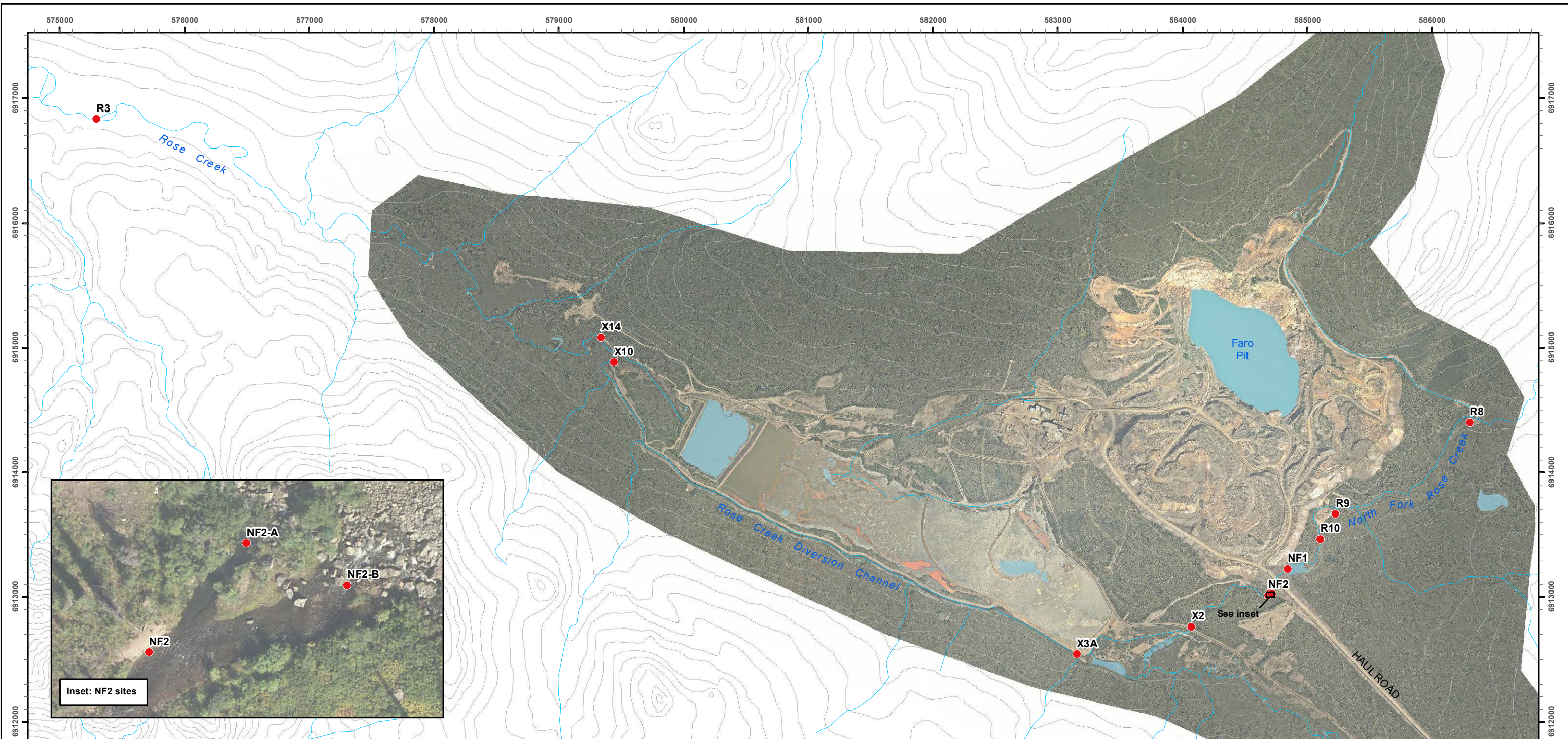
<b>Trip No.</b>	<b>Dates</b>	<b>General Tasks</b>
1	Nov 12 – 14, 2013	<ul style="list-style-type: none"> <li>• Fish telemetry</li> <li>• Piezometer water depth measurements</li> <li>• Ground water sampling</li> <li>• Surface water sampling</li> </ul>
2	Nov 25 – 28, 2013	<ul style="list-style-type: none"> <li>• Fish telemetry</li> <li>• Surface water sampling</li> <li>• Aquatic toxicity (bioassay) sampling</li> </ul>
3	Dec 10, 2013	<ul style="list-style-type: none"> <li>• Fish telemetry</li> </ul>
4	Dec 19 – 20, 2013	<ul style="list-style-type: none"> <li>• Surface water sampling</li> </ul>
5	Dec 27, 2013	<ul style="list-style-type: none"> <li>• Surface water sampling</li> </ul>
6	Jan 2, 2014	<ul style="list-style-type: none"> <li>• Surface water sampling</li> </ul>
7	Jan 7 – 8, 2014	<ul style="list-style-type: none"> <li>• Fish telemetry</li> <li>• Surface water sampling</li> </ul>
8	Jan 14 – 15, 2014	<ul style="list-style-type: none"> <li>• Surface water sampling</li> <li>• Fish telemetry</li> </ul>
9	Jan 21, 2014	<ul style="list-style-type: none"> <li>• Surface water sampling</li> </ul>
10	Jan 28 – 29, 2014	<ul style="list-style-type: none"> <li>• Surface water sampling</li> <li>• Fish telemetry</li> </ul>
11	Feb 5, 2014	<ul style="list-style-type: none"> <li>• Surface water sampling</li> </ul>
12	Feb 11 & 13, 2014	<ul style="list-style-type: none"> <li>• Surface water sampling</li> </ul>
13	Feb 18, 2014	<ul style="list-style-type: none"> <li>• Surface water sampling</li> </ul>
14	Feb 25, 2014	<ul style="list-style-type: none"> <li>• Surface water sampling</li> <li>• Aquatic toxicity (bioassay) sampling</li> </ul>
15	Mar 5, 2014	<ul style="list-style-type: none"> <li>• Surface water sampling</li> </ul>
16	Mar 11, 2014	<ul style="list-style-type: none"> <li>• Surface water sampling</li> </ul>
17	Mar 19, 2014	<ul style="list-style-type: none"> <li>• Surface water sampling</li> </ul>
18	Mar 25, 2014	<ul style="list-style-type: none"> <li>• Surface water sampling</li> </ul>



Table 2. Surface water sampling field data, March 25, 2014.

Site Name	UTM Location (NAD83/ Zone 8)		Sample		QA/ QC Rep. ID	In-situ Parameters			
	Easting	Northing	Date	Time		Temp (°C)	SPC (µS/cm)	pH	Turbidity (NTU)
R3	575289	6916841	25-Mar-14	9:00		0.0	702.3	7.42	1.87
X14	579339	6915088	25-Mar-14	9:35		0.0	872.3	7.31	1.43
X10	579453	6914883	25-Mar-14	9:55		0.0	353.1	7.49	1.23
X3A	583148	6912537	25-Mar-14	10:25	X3A-r	0.0	344.9	7.35	1.79
X2	584072	6912763	25-Mar-14	10:45		0.0	343.6	7.25	3.23
NF2-A	584706	6913033	25-Mar-14	11:00		0.0	662.5	8.07	7.22
NF2-B	584728	6913028	25-Mar-14	11:20		0.0	668.6	7.34	1.44
NF2	584685	6913001	25-Mar-14	11:30		0.0	331.0	7.10	1.46
NF1	584844	6913222	25-Mar-14	12:20		0.1	310.7	7.36	1.36
R10	585108	6913483	25-Mar-14	12:25		0.0	304.0	7.51	0.88
R9	585226	6913662	25-Mar-14	12:35		0.0	301.8	7.73	0.77
R8	586297	6914405	25-Mar-14	12:50		0.0	273.1	7.74	2.15

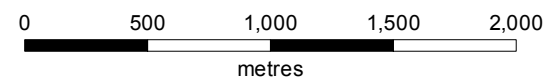
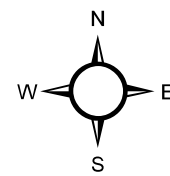
Where, UTM = Universal Transverse Mercator;  
 QA/QC Rep = Quality Assurance/ Quality Control Replicate;  
 Temp = water temperature; and,  
 SPC = specific conductance.



### Location of surface water sample sites, Faro Mine Site, March 25, 2014

#### Legend

- Surface Water Sample Collected
- Road (Mine Access/Haul)
- Topographic Contour (30 m Interval)



Map Scale = 1:30,000 (printed on 11 x 17)  
 Map Projection: North American Datum 1983 UTM Zone 8N

#### Data sources

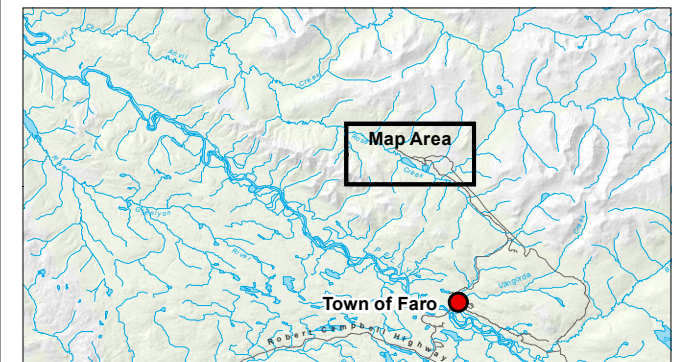
1:50,000 topographic spatial data provided by Geomatics - Yukon Government via online source (Corporate Spatial Warehouse) [www.geomaticsyukon.ca](http://www.geomaticsyukon.ca).

National Road Network courtesy of Her Majesty the Queen in Right of Canada, Department of Natural Resources. All Rights Reserved.

Detailed topographic features of the Faro, Grum and Vangorda mine sites were provided by Yukon Government - Energy, Mines and Resources - Assessment and Abandoned Mines Branch (March 2012).

Project data displayed is site specific. Data collected by EDI Environmental Dynamics Inc. was obtained using Garmin GPS technology.

This document is not an official land survey and the spatial data presented is subject to change.



Map Prepared by  
 EDI Environmental Dynamics Inc.

Drawn: LG	Checked: MK	FIGURE 1	Date: 18/03/2014
--------------	----------------	----------	------------------



## Site Photos



Photo 1. Upstream view at surface water sampling site R3, March 25, 2014.



Photo 2. Downstream view at surface water sampling site X14, March 25, 2014.



Photo 3. Downstream view at surface water sampling site X10, March 25, 2014.



Photo 4. Overview at surface water sampling site X3A, March 25, 2014.



Photo 5. Downstream view at surface water sampling site X2, March 25, 2014.



Photo 6. Downstream view at surface water sampling site NF2-A, March 25, 2014.



Photo 7. Upstream view from surface water sampling site NF2-B, March 25, 2014.



Photo 8. Overview at surface water sampling site NF2, March 25, 2014.



Photo 9. Overview from surface water sampling site NF1, March 25, 2014.



Photo 10. Downstream view from surface water sampling site R10, March 25, 2014.



Photo 11. Upstream at surface water sampling site R9, March 25, 2014.



Photo 12. Downstream view at surface water sampling site R8, March 25, 2014.



ENVIRONMENTAL DYNAMICS INC.  
ATTN: Meighan Kearns  
2195 - 2nd Avenue  
Whitehorse YT Y1A 3T8

Date Received: 26-MAR-14  
Report Date: 31-MAR-14 16:26 (MT)  
Version: FINAL

Client Phone: 867-393-4882

## Certificate of Analysis

**Lab Work Order #:** L1436273  
**Project P.O. #:** NOT SUBMITTED  
**Job Reference:** 13-Y-0452  
**C of C Numbers:** 1, 2  
**Legal Site Desc:**

Can Dang  
Senior Account Manager

[This report shall not be reproduced except in full without the written authority of the Laboratory.]

ADDRESS: 8081 Lougheed Hwy, Suite 100, Burnaby, BC V5A 1W9 Canada | Phone: +1 604 253 4188 | Fax: +1 604 253 6700  
ALS CANADA LTD Part of the ALS Group A Campbell Brothers Limited Company

## ALS ENVIRONMENTAL ANALYTICAL REPORT

	Sample ID Description Sampled Date Sampled Time Client ID	L1436273-1 Grab 25-MAR-14 12:35 R9	L1436273-2 Grab 25-MAR-14 12:25 R10	L1436273-3 Grab 25-MAR-14 09:35 X14	L1436273-4 Grab 25-MAR-14 10:25 X3A-R	L1436273-5 Grab 25-MAR-14 11:30 NF2
Grouping	Analyte					
<b>WATER</b>						
<b>Physical Tests</b>	Conductivity (uS/cm)	294	292	774	343	320
	Hardness (as CaCO3) (mg/L)	148	149	444	176	162
	pH (pH)	7.91	7.69	7.51	7.53	7.38
	Total Suspended Solids (mg/L)	1.2	1.2	3.4	<1.0	1.2
	Total Dissolved Solids (mg/L)	169	167	567	198	186
<b>Anions and Nutrients</b>	Alkalinity, Total (as CaCO3) (mg/L)	144	140	200	150	144
	Ammonia, Total (as N) (mg/L)	<0.0050	<0.0050	0.115	0.0075	<0.0050
	Chloride (Cl) (mg/L)	<0.50	<0.50	0.60	<0.50	<0.50
	Fluoride (F) (mg/L)	0.182	0.181	0.159	0.187	0.192
	Nitrate (as N) (mg/L)	0.292	0.293	0.228	0.309	0.295
	Nitrite (as N) (mg/L)	<0.0010	<0.0010	<0.0010	<0.0010	<0.0010
	Phosphorus (P)-Total (mg/L)	0.0053	0.0050	<0.0020	0.0035	0.0041
	Sulfate (SO4) (mg/L)	22.2	22.7	270	37.4	33.3
	Anion Sum (meq/L)	3.37	3.31	9.65	3.80	3.61
	Cation Sum (meq/L)	3.14	3.14	9.53	3.72	3.46
	Cation - Anion Balance (%)	-3.6	-2.6	-0.6	-1.0	-2.1
<b>Organic / Inorganic Carbon</b>	Dissolved Organic Carbon (mg/L)	1.18	1.23	1.29	1.27	1.28
	Total Organic Carbon (mg/L)	1.27	1.24	1.37	1.39	1.19
<b>Total Metals</b>	Aluminum (Al)-Total (mg/L)	0.0086	0.0088	0.0230	0.0104	0.0252
	Antimony (Sb)-Total (mg/L)	<0.00010	<0.00010	<0.00010	0.00014	<0.00010
	Arsenic (As)-Total (mg/L)	0.00054	0.00056	0.00041	0.00038	0.00053
	Barium (Ba)-Total (mg/L)	0.0754	0.0733	0.0730	0.0799	0.0780
	Beryllium (Be)-Total (mg/L)	<0.00010	<0.00010	<0.00010	<0.00010	<0.00010
	Bismuth (Bi)-Total (mg/L)	<0.00050	<0.00050	<0.00050	<0.00050	<0.00050
	Boron (B)-Total (mg/L)	<0.010	<0.010	<0.010	<0.010	<0.010
	Cadmium (Cd)-Total (mg/L)	<0.000010	0.000019	0.000240	0.000333	0.000512
	Calcium (Ca)-Total (mg/L)	43.7	42.2	128	49.9	45.3
	Chromium (Cr)-Total (mg/L)	0.00011	0.00018	0.00012	0.00017	0.00021
	Cobalt (Co)-Total (mg/L)	<0.00010	<0.00010	0.00414	0.00216	0.00358
	Copper (Cu)-Total (mg/L)	<0.00050	<0.00050	0.00051	0.00052	<0.00050
	Iron (Fe)-Total (mg/L)	0.116	0.116	0.838	0.148	0.207
	Lead (Pb)-Total (mg/L)	<0.000050	0.000072	0.000237	0.000247	0.000426
	Lithium (Li)-Total (mg/L)	0.00784	0.00770	0.00895	0.00799	0.00852
	Magnesium (Mg)-Total (mg/L)	9.31	9.27	29.6	12.6	11.8
	Manganese (Mn)-Total (mg/L)	0.0181	0.0208	5.44	0.185	0.217
	Molybdenum (Mo)-Total (mg/L)	0.000970	0.000932	0.000834	0.000788	0.000942

\* Please refer to the Reference Information section for an explanation of any qualifiers detected.

## ALS ENVIRONMENTAL ANALYTICAL REPORT

	Sample ID Description Sampled Date Sampled Time Client ID	L1436273-6 Grab 25-MAR-14 11:00 NF2-A	L1436273-7 Grab 25-MAR-14 09:00 R3	L1436273-8 Grab 25-MAR-14 11:20 NF2-B	L1436273-9 Grab 25-MAR-14 10:45 X2	L1436273-10 Grab 25-MAR-14 09:55 X10
Grouping	Analyte					
<b>WATER</b>						
<b>Physical Tests</b>	Conductivity (uS/cm)	606	639	308	325	332
	Hardness (as CaCO3) (mg/L)	335	351	158	169	174
	pH (pH)	8.11	7.76	7.47	7.49	7.71
	Total Suspended Solids (mg/L)	7.6	1.6	<1.0	<1.0	<1.0
	Total Dissolved Solids (mg/L)	407	447	181	199	203
<b>Anions and Nutrients</b>	Alkalinity, Total (as CaCO3) (mg/L)	262	185	153	154	166
	Ammonia, Total (as N) (mg/L)	0.0133	0.0509	<0.0050	0.0069	<0.0050
	Chloride (Cl) (mg/L)	<0.50	<0.50	<0.50	<0.50	<0.50
	Fluoride (F) (mg/L)	0.318	0.137	0.181	0.191	0.171
	Nitrate (as N) (mg/L)	1.87	0.267	0.297	0.287	0.289
	Nitrite (as N) (mg/L)	0.0026	0.0011	<0.0010	<0.0010	<0.0010
	Phosphorus (P)-Total (mg/L)	0.0138	<0.020 <sup>DLM</sup>	0.0039	0.0034	0.0030
	Sulfate (SO4) (mg/L)	107	197	25.4	38.2	33.9
	Anion Sum (meq/L)	7.61	7.83	3.61	3.91	4.05
	Cation Sum (meq/L)	7.24	7.42	3.36	3.61	3.67
	Cation - Anion Balance (%)	-2.5	-2.7	-3.7	-4.0	-4.9
<b>Organic / Inorganic Carbon</b>	Dissolved Organic Carbon (mg/L)	3.00	1.26	1.24	1.52	1.28
	Total Organic Carbon (mg/L)	3.13	1.42	1.25	1.29	1.34
<b>Total Metals</b>	Aluminum (Al)-Total (mg/L)	0.0589	0.0076	0.0089	0.0130	0.0068
	Antimony (Sb)-Total (mg/L)	0.00014	<0.00010	<0.00010	<0.00010	<0.00010
	Arsenic (As)-Total (mg/L)	0.00117	0.00025	0.00051	0.00048	0.00031
	Barium (Ba)-Total (mg/L)	0.127	0.0831	0.0802	0.0802	0.0820
	Beryllium (Be)-Total (mg/L)	<0.00010	<0.00010	<0.00010	<0.00010	<0.00010
	Bismuth (Bi)-Total (mg/L)	<0.00050	<0.00050	<0.00050	<0.00050	<0.00050
	Boron (B)-Total (mg/L)	<0.010	<0.010	<0.010	<0.010	<0.010
	Cadmium (Cd)-Total (mg/L)	0.000617	0.000125	0.000112	0.000455	0.000223
	Calcium (Ca)-Total (mg/L)	95.6	105	44.8	47.3	49.9
	Chromium (Cr)-Total (mg/L)	0.00037	0.00013	0.00011	0.00010	<0.00010
	Cobalt (Co)-Total (mg/L)	0.00214	0.00171	0.00078	0.00317	0.00074
	Copper (Cu)-Total (mg/L)	0.00123	0.00059	<0.00050	<0.00050	<0.00050
	Iron (Fe)-Total (mg/L)	0.456	0.188	0.118	0.267	0.113
	Lead (Pb)-Total (mg/L)	0.00324	0.000194	0.000250	0.000339	0.000166
	Lithium (Li)-Total (mg/L)	0.0157	0.00624	0.00811	0.00878	0.00751
	Magnesium (Mg)-Total (mg/L)	24.4	23.7	10.3	12.8	12.7
	Manganese (Mn)-Total (mg/L)	0.214	2.41	0.0565	0.240	0.0827
	Molybdenum (Mo)-Total (mg/L)	0.00163	0.000589	0.000947	0.000891	0.000760

\* Please refer to the Reference Information section for an explanation of any qualifiers detected.

## ALS ENVIRONMENTAL ANALYTICAL REPORT

	Sample ID Description Sampled Date Sampled Time Client ID	L1436273-11 Grab 25-MAR-14 13:10 FIELD BLANK	L1436273-12 Grab 25-MAR-14 10:20 X3A	L1436273-13 Grab 25-MAR-14 12:10 NF1	L1436273-14 Grab 25-MAR-14 12:50 R8	L1436273-15 Grab 26-MAR-14 09:55 TRAVEL BLANK
Grouping	Analyte					
<b>WATER</b>						
<b>Physical Tests</b>	Conductivity (uS/cm)	<2.0	334	300	263	<2.0
	Hardness (as CaCO3) (mg/L)	<0.50	172	155	134	<0.50
	pH (pH)	5.85	7.50	7.50	7.86	5.67
	Total Suspended Solids (mg/L)	<1.0	<1.0	<1.0	<1.0	<1.0
	Total Dissolved Solids (mg/L)	<1.0	199	177	148	<1.0
<b>Anions and Nutrients</b>	Alkalinity, Total (as CaCO3) (mg/L)	<2.0	154	150	138	<2.0
	Ammonia, Total (as N) (mg/L)	<0.0050	0.0062	0.0059	<0.0050	<0.0050
	Chloride (Cl) (mg/L)	<0.50	<0.50	<0.50	<0.50	<0.50
	Fluoride (F) (mg/L)	<0.020	0.187	0.185	0.179	<0.020
	Nitrate (as N) (mg/L)	<0.0050	0.317	0.316	0.188	<0.0050
	Nitrite (as N) (mg/L)	<0.0010	<0.0010	<0.0010	<0.0010	<0.0010
	Phosphorus (P)-Total (mg/L)	<0.0020	0.0034	0.0050	0.0055	<0.0020
	Sulfate (SO4) (mg/L)	<0.50	36.9	23.7	9.84	<0.50
	Anion Sum (meq/L)	<0.10	3.87	3.52	2.99	<0.10
	Cation Sum (meq/L)	<0.10	3.65	3.29	2.85	<0.10
	Cation - Anion Balance (%)	0.0	-3.0	-3.4	-2.4	0.0
<b>Organic / Inorganic Carbon</b>	Dissolved Organic Carbon (mg/L)	<0.50	1.33	1.25	1.19	
	Total Organic Carbon (mg/L)	<0.50	1.43	1.23	1.18	<0.50
<b>Total Metals</b>	Aluminum (Al)-Total (mg/L)	<0.0030	0.0107	0.0073	0.0068	<0.0030
	Antimony (Sb)-Total (mg/L)	<0.00010	0.00019	0.00012	<0.00010	<0.00010
	Arsenic (As)-Total (mg/L)	<0.00010	0.00046	0.00058	0.00059	<0.00010
	Barium (Ba)-Total (mg/L)	<0.000050	0.0813	0.0799	0.0779	<0.000050
	Beryllium (Be)-Total (mg/L)	<0.00010	<0.00010	<0.00010	<0.00010	<0.00010
	Bismuth (Bi)-Total (mg/L)	<0.00050	<0.00050	<0.00050	<0.00050	<0.00050
	Boron (B)-Total (mg/L)	<0.010	<0.010	<0.010	<0.010	<0.010
	Cadmium (Cd)-Total (mg/L)	<0.000010	0.000349	0.000025	<0.000010	<0.000010
	Calcium (Ca)-Total (mg/L)	<0.020	49.1	45.8	41.1	<0.020
	Chromium (Cr)-Total (mg/L)	<0.00010	0.00025	0.00014	0.00012	<0.00010
	Cobalt (Co)-Total (mg/L)	<0.00010	0.00209	0.00030	<0.00010	<0.00010
	Copper (Cu)-Total (mg/L)	<0.00050	0.00073	<0.00050	<0.00050	<0.00050
	Iron (Fe)-Total (mg/L)	<0.010	0.150	0.131	0.125	<0.010
	Lead (Pb)-Total (mg/L)	<0.000050	0.000293	0.000116	<0.000050	<0.000050
	Lithium (Li)-Total (mg/L)	<0.00050	0.00766	0.00855	0.00792	<0.00050
	Magnesium (Mg)-Total (mg/L)	<0.0050	12.7	10.2	7.72	<0.0050
	Manganese (Mn)-Total (mg/L)	<0.000050	0.180	0.0447	0.0163	<0.000050
	Molybdenum (Mo)-Total (mg/L)	<0.000050	0.000829	0.000970	0.000996	<0.000050

\* Please refer to the Reference Information section for an explanation of any qualifiers detected.

## ALS ENVIRONMENTAL ANALYTICAL REPORT

		Sample ID	L1436273-1	L1436273-2	L1436273-3	L1436273-4	L1436273-5
		Description	Grab	Grab	Grab	Grab	Grab
		Sampled Date	25-MAR-14	25-MAR-14	25-MAR-14	25-MAR-14	25-MAR-14
		Sampled Time	12:35	12:25	09:35	10:25	11:30
		Client ID	R9	R10	X14	X3A-R	NF2
Grouping	Analyte						
<b>WATER</b>							
<b>Total Metals</b>	Nickel (Ni)-Total (mg/L)		<0.00050	<0.00050	0.0104	0.00431	0.00539
	Phosphorus (P)-Total (mg/L)		<0.30	<0.30	<0.30	<0.30	<0.30
	Potassium (K)-Total (mg/L)		1.05	1.04	2.15	1.32	1.16
	Selenium (Se)-Total (mg/L)		0.00046	0.00044	0.00045	0.00041	0.00045
	Silicon (Si)-Total (mg/L)		5.86	5.65	6.37	6.12	6.09
	Silver (Ag)-Total (mg/L)		<0.000010	<0.000010	<0.000010	<0.000010	<0.000010
	Sodium (Na)-Total (mg/L)		3.26	3.17	8.02	3.50	3.48
	Strontium (Sr)-Total (mg/L)		0.197	0.199	0.418	0.225	0.204
	Thallium (Tl)-Total (mg/L)		<0.000010	<0.000010	<0.000010	<0.000010	<0.000010
	Tin (Sn)-Total (mg/L)		<0.00010	<0.00010	<0.00010	<0.00010	<0.00010
	Titanium (Ti)-Total (mg/L)		<0.010	<0.010	<0.010	<0.010	<0.010
	Uranium (U)-Total (mg/L)		0.00289	0.00279	0.00376	0.00313	0.00288
	Vanadium (V)-Total (mg/L)		<0.0010	<0.0010	<0.0010	<0.0010	<0.0010
	Zinc (Zn)-Total (mg/L)		<0.0030	0.0114	0.323	0.594	0.813
	Zirconium (Zr)-Total (mg/L)		<0.00080	<0.00080	<0.00080	<0.00080	<0.00080
<b>Dissolved Metals</b>	Dissolved Metals Filtration Location		FIELD	FIELD	FIELD	FIELD	FIELD
	Aluminum (Al)-Dissolved (mg/L)		0.0013	0.0019	0.0014	0.0022	0.0032
	Antimony (Sb)-Dissolved (mg/L)		<0.00010	<0.00010	<0.00010	0.00013	<0.00010
	Arsenic (As)-Dissolved (mg/L)		0.00039	0.00041	0.00032	0.00019	0.00033
	Barium (Ba)-Dissolved (mg/L)		0.0756	0.0762	0.0740	0.0782	0.0775
	Beryllium (Be)-Dissolved (mg/L)		<0.00010	<0.00010	<0.00010	<0.00010	<0.00010
	Bismuth (Bi)-Dissolved (mg/L)		<0.00050	<0.00050	<0.00050	<0.00050	<0.00050
	Boron (B)-Dissolved (mg/L)		<0.010	<0.010	<0.010	<0.010	<0.010
	Cadmium (Cd)-Dissolved (mg/L)		<0.000010	0.000015	0.000225	0.000336	0.000500
	Calcium (Ca)-Dissolved (mg/L)		43.9	43.6	127	49.9	45.7
	Chromium (Cr)-Dissolved (mg/L)		<0.00010	<0.00010	<0.00010	<0.00010	<0.00010
	Cobalt (Co)-Dissolved (mg/L)		<0.00010	<0.00010	0.00400	0.00205	0.00351
	Copper (Cu)-Dissolved (mg/L)		0.00021	0.00021	0.00028	0.00033	0.00025
	Iron (Fe)-Dissolved (mg/L)		0.022	0.025	0.654	0.022	0.077
	Lead (Pb)-Dissolved (mg/L)		<0.000050	<0.000050	<0.000050	<0.000050	<0.000050
	Lithium (Li)-Dissolved (mg/L)		0.00826	0.00822	0.00883	0.00803	0.00873
	Magnesium (Mg)-Dissolved (mg/L)		9.42	9.62	30.8	12.5	11.7
	Manganese (Mn)-Dissolved (mg/L)		0.0162	0.0193	5.42	0.178	0.213
	Molybdenum (Mo)-Dissolved (mg/L)		0.000882	0.000892	0.000759	0.000777	0.000876
	Nickel (Ni)-Dissolved (mg/L)		<0.00050	<0.00050	0.0101	0.00396	0.00520
	Phosphorus (P)-Dissolved (mg/L)		<0.30	<0.30	<0.30	<0.30	<0.30
	Potassium (K)-Dissolved (mg/L)		1.06	1.07	2.23	1.29	1.16

\* Please refer to the Reference Information section for an explanation of any qualifiers detected.

## ALS ENVIRONMENTAL ANALYTICAL REPORT

		Sample ID	L1436273-6	L1436273-7	L1436273-8	L1436273-9	L1436273-10
		Description	Grab	Grab	Grab	Grab	Grab
		Sampled Date	25-MAR-14	25-MAR-14	25-MAR-14	25-MAR-14	25-MAR-14
		Sampled Time	11:00	09:00	11:20	10:45	09:55
		Client ID	NF2-A	R3	NF2-B	X2	X10
Grouping	Analyte						
<b>WATER</b>							
<b>Total Metals</b>	Nickel (Ni)-Total (mg/L)		0.00909	0.00502	0.00139	0.00521	0.00354
	Phosphorus (P)-Total (mg/L)		<0.30	<0.30	<0.30	<0.30	<0.30
	Potassium (K)-Total (mg/L)		2.45	1.88	1.18	1.24	1.33
	Selenium (Se)-Total (mg/L)		0.00102	0.00044	0.00046	0.00043	0.00040
	Silicon (Si)-Total (mg/L)		11.1	6.03	6.13	6.40	6.16
	Silver (Ag)-Total (mg/L)		<0.000010	<0.000010	<0.000010	<0.000010	<0.000010
	Sodium (Na)-Total (mg/L)		9.92	6.37	3.46	3.64	3.52
	Strontium (Sr)-Total (mg/L)		0.436	0.340	0.202	0.214	0.224
	Thallium (Tl)-Total (mg/L)		0.000014	<0.000010	<0.000010	<0.000010	<0.000010
	Tin (Sn)-Total (mg/L)		<0.00010	<0.00010	<0.00010	<0.00010	<0.00010
	Titanium (Ti)-Total (mg/L)		<0.010	<0.010	<0.010	<0.010	<0.010
	Uranium (U)-Total (mg/L)		0.00657	0.00314	0.00293	0.00301	0.00307
	Vanadium (V)-Total (mg/L)		<0.0010	<0.0010	<0.0010	<0.0010	<0.0010
	Zinc (Zn)-Total (mg/L)		1.02	0.149	0.171	0.767	0.452
	Zirconium (Zr)-Total (mg/L)		<0.00080	<0.00080	<0.00080	<0.00080	<0.00080
<b>Dissolved Metals</b>	Dissolved Metals Filtration Location		FIELD	FIELD	FIELD	FIELD	FIELD
	Aluminum (Al)-Dissolved (mg/L)		0.0018	<0.0010	0.0016	0.0038	0.0015
	Antimony (Sb)-Dissolved (mg/L)		0.00013	<0.00010	<0.00010	<0.00010	<0.00010
	Arsenic (As)-Dissolved (mg/L)		0.00059	0.00016	0.00035	0.00022	0.00016
	Barium (Ba)-Dissolved (mg/L)		0.123	0.0821	0.0814	0.0792	0.0784
	Beryllium (Be)-Dissolved (mg/L)		<0.00010	<0.00010	<0.00010	<0.00010	<0.00010
	Bismuth (Bi)-Dissolved (mg/L)		<0.00050	<0.00050	<0.00050	<0.00050	<0.00050
	Boron (B)-Dissolved (mg/L)		<0.010	<0.010	<0.010	<0.010	<0.010
	Cadmium (Cd)-Dissolved (mg/L)		0.000530	0.000110	0.000109	0.000448	0.000220
	Calcium (Ca)-Dissolved (mg/L)		92.8	101	45.8	47.1	49.0
	Chromium (Cr)-Dissolved (mg/L)		<0.00010	<0.00010	<0.00010	<0.00010	<0.00010
	Cobalt (Co)-Dissolved (mg/L)		0.00202	0.00171	0.00075	0.00305	0.00071
	Copper (Cu)-Dissolved (mg/L)		0.00082	0.00033	0.00027	0.00025	0.00031
	Iron (Fe)-Dissolved (mg/L)		0.021	<0.010	0.028	0.070	0.015
	Lead (Pb)-Dissolved (mg/L)		0.000201	<0.000050	<0.000050	<0.000050	<0.000050
	Lithium (Li)-Dissolved (mg/L)		0.0156	0.00664	0.00854	0.00901	0.00756
	Magnesium (Mg)-Dissolved (mg/L)		25.0	23.8	10.7	12.5	12.5
	Manganese (Mn)-Dissolved (mg/L)		0.209	2.39	0.0562	0.231	0.0804
	Molybdenum (Mo)-Dissolved (mg/L)		0.00149	0.000549	0.000878	0.000845	0.000702
	Nickel (Ni)-Dissolved (mg/L)		0.00882	0.00506	0.00132	0.00485	0.00342
	Phosphorus (P)-Dissolved (mg/L)		<0.30	<0.30	<0.30	<0.30	<0.30
	Potassium (K)-Dissolved (mg/L)		2.52	1.87	1.19	1.25	1.29

\* Please refer to the Reference Information section for an explanation of any qualifiers detected.

## ALS ENVIRONMENTAL ANALYTICAL REPORT

		Sample ID	L1436273-11	L1436273-12	L1436273-13	L1436273-14	L1436273-15
		Description	Grab	Grab	Grab	Grab	Grab
		Sampled Date	25-MAR-14	25-MAR-14	25-MAR-14	25-MAR-14	26-MAR-14
		Sampled Time	13:10	10:20	12:10	12:50	09:55
		Client ID	FIELD BLANK	X3A	NF1	R8	TRAVEL BLANK
Grouping	Analyte						
<b>WATER</b>							
<b>Total Metals</b>	Nickel (Ni)-Total (mg/L)		<0.00050	0.00416	0.00064	<0.00050	<0.00050
	Phosphorus (P)-Total (mg/L)		<0.30	<0.30	<0.30	<0.30	<0.30
	Potassium (K)-Total (mg/L)		<0.050	1.33	1.17	1.00	<0.050
	Selenium (Se)-Total (mg/L)		<0.00010	0.00043	0.00044	0.00044	<0.00010
	Silicon (Si)-Total (mg/L)		<0.050	6.13	6.17	6.03	<0.050
	Silver (Ag)-Total (mg/L)		<0.000010	<0.000010	<0.000010	<0.000010	<0.000010
	Sodium (Na)-Total (mg/L)		<0.050	3.49	3.46	3.18	<0.050
	Strontium (Sr)-Total (mg/L)		<0.00020	0.234	0.208	0.188	<0.00020
	Thallium (Tl)-Total (mg/L)		<0.000010	<0.000010	<0.000010	<0.000010	<0.000010
	Tin (Sn)-Total (mg/L)		<0.00010	<0.00010	<0.00010	<0.00010	<0.00010
	Titanium (Ti)-Total (mg/L)		<0.010	<0.010	<0.010	<0.010	<0.010
	Uranium (U)-Total (mg/L)		<0.000010	0.00314	0.00302	0.00279	<0.000010
	Vanadium (V)-Total (mg/L)		<0.0010	<0.0010	<0.0010	<0.0010	<0.0010
	Zinc (Zn)-Total (mg/L)		<0.0030	0.593	0.0241	<0.0030	<0.0030
	Zirconium (Zr)-Total (mg/L)		<0.00080	<0.00080	<0.00080	<0.00080	<0.00080
<b>Dissolved Metals</b>	Dissolved Metals Filtration Location		FIELD	FIELD	FIELD	FIELD	
	Aluminum (Al)-Dissolved (mg/L)		<0.0010	0.0024	0.0024	0.0016	
	Antimony (Sb)-Dissolved (mg/L)		<0.00010	<0.00010	<0.00010	<0.00010	
	Arsenic (As)-Dissolved (mg/L)		<0.00010	0.00022	0.00039	0.00040	
	Barium (Ba)-Dissolved (mg/L)		<0.000050	0.0797	0.0790	0.0765	
	Beryllium (Be)-Dissolved (mg/L)		<0.00010	<0.00010	<0.00010	<0.00010	
	Bismuth (Bi)-Dissolved (mg/L)		<0.00050	<0.00050	<0.00050	<0.00050	
	Boron (B)-Dissolved (mg/L)		<0.010	<0.010	<0.010	<0.010	
	Cadmium (Cd)-Dissolved (mg/L)		<0.000010	0.000331	0.000021	<0.000010	
	Calcium (Ca)-Dissolved (mg/L)		<0.020	48.5	45.3	40.8	
	Chromium (Cr)-Dissolved (mg/L)		<0.00010	<0.00010	<0.00010	<0.00010	
	Cobalt (Co)-Dissolved (mg/L)		<0.00010	0.00205	0.00030	<0.00010	
	Copper (Cu)-Dissolved (mg/L)		<0.00020	0.00030	0.00026	<0.00020	
	Iron (Fe)-Dissolved (mg/L)		<0.010	0.022	0.031	0.028	
	Lead (Pb)-Dissolved (mg/L)		<0.000050	<0.000050	<0.000050	<0.000050	
	Lithium (Li)-Dissolved (mg/L)		<0.00050	0.00801	0.00862	0.00820	
	Magnesium (Mg)-Dissolved (mg/L)		<0.0050	12.4	10.2	7.88	
	Manganese (Mn)-Dissolved (mg/L)		<0.000050	0.175	0.0431	0.0151	
	Molybdenum (Mo)-Dissolved (mg/L)		<0.000050	0.000762	0.000890	0.000936	
	Nickel (Ni)-Dissolved (mg/L)		<0.00050	0.00389	0.00054	<0.00050	
	Phosphorus (P)-Dissolved (mg/L)		<0.30	<0.30	<0.30	<0.30	
	Potassium (K)-Dissolved (mg/L)		<0.050	1.32	1.17	1.02	

\* Please refer to the Reference Information section for an explanation of any qualifiers detected.

# ALS ENVIRONMENTAL ANALYTICAL REPORT

	Sample ID	L1436273-1	L1436273-2	L1436273-3	L1436273-4	L1436273-5
Description	Grab	Grab	Grab	Grab	Grab	Grab
Sampled Date	25-MAR-14	25-MAR-14	25-MAR-14	25-MAR-14	25-MAR-14	25-MAR-14
Sampled Time	12:35	12:25	09:35	10:25	11:30	
Client ID	R9	R10	X14	X3A-R	NF2	
Grouping	Analyte					
<b>WATER</b>						
<b>Dissolved Metals</b>	Selenium (Se)-Dissolved (mg/L)	0.00050	0.00052	0.00045	0.00046	0.00049
	Silicon (Si)-Dissolved (mg/L)	6.03	6.03	6.40	6.09	6.16
	Silver (Ag)-Dissolved (mg/L)	<0.000010	<0.000010	<0.000010	<0.000010	<0.000010
	Sodium (Na)-Dissolved (mg/L)	3.27	3.31	8.31	3.46	3.53
	Strontium (Sr)-Dissolved (mg/L)	0.199	0.192	0.403	0.227	0.209
	Thallium (Tl)-Dissolved (mg/L)	<0.000010	<0.000010	<0.000010	<0.000010	<0.000010
	Tin (Sn)-Dissolved (mg/L)	<0.00010	<0.00010	<0.00010	<0.00010	<0.00010
	Titanium (Ti)-Dissolved (mg/L)	<0.010	<0.010	<0.010	<0.010	<0.010
	Uranium (U)-Dissolved (mg/L)	0.00290	0.00277	0.00368	0.00298	0.00290
	Vanadium (V)-Dissolved (mg/L)	<0.0010	<0.0010	<0.0010	<0.0010	<0.0010
	Zinc (Zn)-Dissolved (mg/L)	<0.0010	0.0119	0.322	0.591	0.833
	Zirconium (Zr)-Dissolved (mg/L)	<0.00080	<0.00080	<0.00080	<0.00080	<0.00080

\* Please refer to the Reference Information section for an explanation of any qualifiers detected.

# ALS ENVIRONMENTAL ANALYTICAL REPORT

	Sample ID	L1436273-6	L1436273-7	L1436273-8	L1436273-9	L1436273-10
Description	Grab	Grab	Grab	Grab	Grab	Grab
Sampled Date	25-MAR-14	25-MAR-14	25-MAR-14	25-MAR-14	25-MAR-14	25-MAR-14
Sampled Time	11:00	09:00	11:20	10:45	09:55	
Client ID	NF2-A	R3	NF2-B	X2	X10	
Grouping	Analyte					
<b>WATER</b>						
<b>Dissolved Metals</b>	Selenium (Se)-Dissolved (mg/L)	0.00110	0.00045	0.00048	0.00047	0.00044
	Silicon (Si)-Dissolved (mg/L)	10.9	6.17	6.40	6.44	5.95
	Silver (Ag)-Dissolved (mg/L)	<0.000010	<0.000010	<0.000010	<0.000010	<0.000010
	Sodium (Na)-Dissolved (mg/L)	10.3	6.21	3.54	3.65	3.45
	Strontium (Sr)-Dissolved (mg/L)	0.410	0.340	0.198	0.212	0.214
	Thallium (Tl)-Dissolved (mg/L)	0.000014	<0.000010	<0.000010	<0.000010	<0.000010
	Tin (Sn)-Dissolved (mg/L)	<0.00010	<0.00010	<0.00010	<0.00010	<0.00010
	Titanium (Ti)-Dissolved (mg/L)	<0.010	<0.010	<0.010	<0.010	<0.010
	Uranium (U)-Dissolved (mg/L)	0.00643	0.00303	0.00276	0.00286	0.00295
	Vanadium (V)-Dissolved (mg/L)	<0.0010	<0.0010	<0.0010	<0.0010	<0.0010
	Zinc (Zn)-Dissolved (mg/L)	0.967	0.149	0.176	0.762	0.453
	Zirconium (Zr)-Dissolved (mg/L)	<0.00080	<0.00080	<0.00080	<0.00080	<0.00080

\* Please refer to the Reference Information section for an explanation of any qualifiers detected.

# ALS ENVIRONMENTAL ANALYTICAL REPORT

	<b>Sample ID</b>	<b>Description</b>	<b>Sampled Date</b>	<b>Sampled Time</b>	<b>Client ID</b>
	L1436273-11	Grab	25-MAR-14	13:10	FIELD BLANK
	L1436273-12	Grab	25-MAR-14	10:20	X3A
	L1436273-13	Grab	25-MAR-14	12:10	NF1
	L1436273-14	Grab	25-MAR-14	12:50	R8
	L1436273-15	Grab	26-MAR-14	09:55	TRAVEL BLANK
<b>Grouping</b>	<b>Analyte</b>				
<b>WATER</b>					
<b>Dissolved Metals</b>	Selenium (Se)-Dissolved (mg/L)				
	<0.00010	0.00045	0.00048	0.00046	
	Silicon (Si)-Dissolved (mg/L)				
	<0.050	6.06	6.36	6.08	
	Silver (Ag)-Dissolved (mg/L)				
	<0.000010	<0.000010	<0.000010	<0.000010	
	Sodium (Na)-Dissolved (mg/L)				
	<0.050	3.51	3.51	3.25	
	Strontium (Sr)-Dissolved (mg/L)				
	<0.00020	0.217	0.196	0.181	
	Thallium (Tl)-Dissolved (mg/L)				
	<0.000010	<0.000010	<0.000010	<0.000010	
	Tin (Sn)-Dissolved (mg/L)				
	<0.00010	<0.00010	<0.00010	<0.00010	
	Titanium (Ti)-Dissolved (mg/L)				
	<0.010	<0.010	<0.010	<0.010	
	Uranium (U)-Dissolved (mg/L)				
	<0.000010	0.00294	0.00290	0.00264	
	Vanadium (V)-Dissolved (mg/L)				
	<0.0010	<0.0010	<0.0010	<0.0010	
	Zinc (Zn)-Dissolved (mg/L)				
	<0.0010	0.587	0.0239	<0.0010	
	Zirconium (Zr)-Dissolved (mg/L)				
	<0.00080	<0.00080	<0.00080	<0.00080	

\* Please refer to the Reference Information section for an explanation of any qualifiers detected.

## Reference Information

### QC Samples with Qualifiers & Comments:

QC Type Description	Parameter	Qualifier	Applies to Sample Number(s)
Matrix Spike	Phosphorus (P)-Total	MS-B	L1436273-7
Matrix Spike	Phosphorus (P)-Total	MS-B	L1436273-7

### Qualifiers for Individual Parameters Listed:

Qualifier	Description
DLM	Detection Limit Adjusted due to sample matrix effects.
MS-B	Matrix Spike recovery could not be accurately calculated due to high analyte background in sample.

### Test Method References:

ALS Test Code	Matrix	Test Description	Method Reference**
<b>ALK-COL-VA</b>	Water	Alkalinity by Colourimetric (Automated)	EPA 310.2
This analysis is carried out using procedures adapted from EPA Method 310.2 "Alkalinity". Total Alkalinity is determined using the methyl orange colourimetric method.			
<b>ANIONS-CL-IC-WR</b>	Water	Chloride by Ion Chromatography	EPA 300.1
This analysis is carried out using procedures adapted from EPA Method 300.1, "Determination of Inorganic Anions by Ion Chromatography", Revision 1.0, April 1999 and from "Determination of Inorganic Anions in Environmental Waters Using a Hydroxide-Selective Column", Application Note 154 v.19, Dionex 2003.			
<b>ANIONS-F-IC-WR</b>	Water	Fluoride by Ion Chromatography	EPA 300.1
This analysis is carried out using procedures adapted from EPA Method 300.1, "Determination of Inorganic Anions by Ion Chromatography", Revision 1.0, April 1999 and from "Determination of Inorganic Anions in Environmental Waters Using a Hydroxide-Selective Column", Application Note 154 v.19, Dionex 2003.			
<b>ANIONS-NO2-IC-WR</b>	Water	Nitrite Nitrogen by Ion Chromatography	EPA 300.1
This analysis is carried out using procedures adapted from EPA Method 300.1, "Determination of Inorganic Anions by Ion Chromatography", Revision 1.0, April 1999 and from "Determination of Inorganic Anions in Environmental Waters Using a Hydroxide-Selective Column", Application Note 154 v.19, Dionex 2003. Nitrate is detected by UV absorbance.			
<b>ANIONS-NO3-IC-WR</b>	Water	Nitrate Nitrogen by Ion Chromatography	EPA 300.1
This analysis is carried out using procedures adapted from EPA Method 300.1, "Determination of Inorganic Anions by Ion Chromatography", Revision 1.0, April 1999 and from "Determination of Inorganic Anions in Environmental Waters Using a Hydroxide-Selective Column", Application Note 154 v.19, Dionex 2003. Nitrate is detected by UV absorbance.			
<b>ANIONS-SO4-IC-WR</b>	Water	Sulphate by Ion Chromatography	EPA 300.1
This analysis is carried out using procedures adapted from EPA Method 300.1, "Determination of Inorganic Anions by Ion Chromatography", Revision 1.0, April 1999 and from "Determination of Inorganic Anions in Environmental Waters Using a Hydroxide-Selective Column", Application Note 154 v.19, Dionex 2003.			
<b>CARBONS-DOC-VA</b>	Water	Dissolved organic carbon by combustion	APHA 5310 TOTAL ORGANIC CARBON (TOC)
This analysis is carried out using procedures adapted from APHA Method 5310 "Total Organic Carbon (TOC)". Dissolved carbon (DOC) fractions are determined by filtering the sample through a 0.45 micron membrane filter prior to analysis.			
<b>CARBONS-TOC-VA</b>	Water	Total organic carbon by combustion	APHA 5310 TOTAL ORGANIC CARBON (TOC)
This analysis is carried out using procedures adapted from APHA Method 5310 "Total Organic Carbon (TOC)".			
<b>EC-MAN-WR</b>	Water	Conductivity by Meter	APHA 2510 (B)
This analysis is carried out using procedures adapted from APHA Method 2510 "Conductivity". Conductivity is determined using an electrode.			
<b>HARDNESS-CALC-VA</b>	Water	Hardness	APHA 2340B
Hardness (also known as Total Hardness) is calculated from the sum of Calcium and Magnesium concentrations, expressed in CaCO3 equivalents. Dissolved Calcium and Magnesium concentrations are preferentially used for the hardness calculation.			
<b>IONBALANCE-VA</b>	Water	Ion Balance Calculation	APHA 1030E
Cation Sum, Anion Sum, and Ion Balance (as % difference) are calculated based on guidance from APHA Standard Methods (1030E Checking Correctness of Analysis). Because all aqueous solutions are electrically neutral, the calculated ion balance (% difference of cations minus anions) should be near-zero.			
Cation and Anion Sums are the total meq/L concentration of major cations and anions. Dissolved species are used where available. Minor ions are included where data is present. Ion Balance is calculated as:			
Ion Balance (%) = [Cation Sum-Anion Sum] / [Cation Sum+Anion Sum]			
<b>MET-D-CCMS-VA</b>	Water	Dissolved Metals in Water by CRC ICPMS	APHA 3030 B&E / EPA SW-846 6020A
This analysis is carried out using procedures adapted from "Standard Methods for the Examination of Water and Wastewater" published by the American Public Health Association, and with procedures adapted from "Test Methods for Evaluating Solid Waste" SW-846 published by the United States Environmental Protection Agency (EPA). The procedures may involve preliminary sample treatment by acid digestion, using hotblock, or filtration (APHA 3030B&E). Instrumental analysis is by collision cell inductively coupled plasma - mass spectrometry (modified from EPA Method			





Chain of Custody (COC) / Analytical Request Form

Canada Toll Free: 1 800 668 9878



L1436273-COFC

COC Number: 14 -

Page \_\_\_ of \_\_\_

www.alsglobal.com

<b>Report To</b>		<b>Report For</b>		<b>Flow (Rush Turnaround Time (TAT) is not available for all tests)</b>																																																																																																							
Company: EDI		Select Report Format: <input checked="" type="checkbox"/> PDF <input checked="" type="checkbox"/> EXCEL <input checked="" type="checkbox"/> EDD (DIGITAL)		R <input type="checkbox"/> Regular (Standard TAT if received by 3 pm - business days)																																																																																																							
Contact: Meighan Kearns		Quality Control (QC) Report with Report <input type="checkbox"/> Yes <input type="checkbox"/> No		P <input checked="" type="checkbox"/> Priority (2-4 bus. days if received by 3pm) 50% surcharge - contact ALS to confirm TAT																																																																																																							
Address: 2195 - 2nd Avenue Whitehorse, YT Y1A 3T8		<input type="checkbox"/> Criteria on Report - provide details below if box checked		E <input type="checkbox"/> Emergency (1-2 bus. days if received by 3pm) 100% surcharge - contact ALS to confirm TAT																																																																																																							
Phone: 867-393-4882		Select Distribution: <input type="checkbox"/> EMAIL <input type="checkbox"/> MAIL <input type="checkbox"/> FAX		E2 <input type="checkbox"/> Same day or weekend emergency - contact ALS to confirm TAT and surcharge																																																																																																							
Invoice To Same as Report To <input type="checkbox"/> Yes <input checked="" type="checkbox"/> No		Invoice Distribution		<b>Analysis Request</b>																																																																																																							
Copy of Invoice with Report <input checked="" type="checkbox"/> Yes <input type="checkbox"/> No		Select Invoice Distribution: <input type="checkbox"/> EMAIL <input type="checkbox"/> MAIL <input type="checkbox"/> FAX		Indicate Filtered (F), Preserved (P) or Filtered and Preserved (F/P) below																																																																																																							
Company: EDI		Email 1 or Fax: sjenner@edynamics.com		<table border="1"> <tr> <td>ALK-COL-VA, P-T-COL-VA, IONBALANCE-V</td> <td>ANIONS-ALL-IC-WR, TDS-CALC-VA</td> <td>EC-MAN-WR, PH-MAN-WR</td> <td>TSS-LOW-WR</td> <td>CARBONS-TOC-VA, NH3-F-VA</td> <td>CARBONS-DOC-VA</td> <td>MET-T-COMS-VA, ZR-T-MS-VA</td> <td>MET-D-COMS-VA, ZR-D-MS-VA</td> <td>HARDNESS-CALC-VA</td> <td rowspan="10" style="writing-mode: vertical-rl; text-orientation: mixed; font-size: 2em; font-weight: bold;">Short Holding Time Rush Processing</td> <td rowspan="10" style="writing-mode: vertical-rl; text-orientation: mixed;">Number of Containers</td> </tr> <tr> <td></td><td></td><td></td><td></td><td></td><td></td><td></td><td></td><td></td> </tr> <tr> <td></td><td></td><td></td><td></td><td></td><td></td><td></td><td></td><td></td> </tr> <tr> <td></td><td></td><td></td><td></td><td></td><td></td><td></td><td></td><td></td> </tr> <tr> <td></td><td></td><td></td><td></td><td></td><td></td><td></td><td></td><td></td> </tr> <tr> <td></td><td></td><td></td><td></td><td></td><td></td><td></td><td></td><td></td> </tr> <tr> <td></td><td></td><td></td><td></td><td></td><td></td><td></td><td></td><td></td> </tr> <tr> <td></td><td></td><td></td><td></td><td></td><td></td><td></td><td></td><td></td> </tr> <tr> <td></td><td></td><td></td><td></td><td></td><td></td><td></td><td></td><td></td> </tr> <tr> <td></td><td></td><td></td><td></td><td></td><td></td><td></td><td></td><td></td> </tr> </table>												ALK-COL-VA, P-T-COL-VA, IONBALANCE-V	ANIONS-ALL-IC-WR, TDS-CALC-VA	EC-MAN-WR, PH-MAN-WR	TSS-LOW-WR	CARBONS-TOC-VA, NH3-F-VA	CARBONS-DOC-VA	MET-T-COMS-VA, ZR-T-MS-VA	MET-D-COMS-VA, ZR-D-MS-VA	HARDNESS-CALC-VA	Short Holding Time Rush Processing	Number of Containers																																																																																	
ALK-COL-VA, P-T-COL-VA, IONBALANCE-V	ANIONS-ALL-IC-WR, TDS-CALC-VA	EC-MAN-WR, PH-MAN-WR	TSS-LOW-WR													CARBONS-TOC-VA, NH3-F-VA	CARBONS-DOC-VA	MET-T-COMS-VA, ZR-T-MS-VA	MET-D-COMS-VA, ZR-D-MS-VA	HARDNESS-CALC-VA	Short Holding Time Rush Processing	Number of Containers																																																																																					
Project Information		Oil and Gas Required Fields (client use)																																																																																																									
ALS Quote #: Q38556		Approver ID:		Cost Center:																																																																																																							
Job #: 13-Y-0452		GL Account:		Routing Code:																																																																																																							
PO / AFE:		Activity Code:																																																																																																									
LSD:		Location:																																																																																																									
ALS Lab Work Order # (lab use only)		ALS Contact:		Sampler: JM/BS																																																																																																							
Sample Identification and/or Coordinates (This description will appear on the report)		Date (dd-mmm-yy)		Time (hh:mm)		Sample Type																																																																																																					
R9		25 MAR 14		12:35		GRAB																																																																																																					
R10		"		12:25		"																																																																																																					
X14		"		09:35		"																																																																																																					
X34-r		"		10:25		"																																																																																																					
NF2		"		11:30		"																																																																																																					
NF2-A		"		11:00		"																																																																																																					
R3		"		09:00		"																																																																																																					
Drinking Water (DW) Samples <sup>1</sup> (client use)		Special Instructions / Specify Criteria to add on report (client Use)		<b>SAMPLE CONDITION AS RECEIVED (lab use only)</b>																																																																																																							
Are samples taken from a Regulated DW System? <input type="checkbox"/> Yes <input type="checkbox"/> No		Use CH2M_EQUIS for EDD.		Frozen <input type="checkbox"/> SIF Observations Yes <input type="checkbox"/> No <input checked="" type="checkbox"/>																																																																																																							
Are samples for human drinking water use? <input type="checkbox"/> Yes <input type="checkbox"/> No				Ice packs Yes <input checked="" type="checkbox"/> No <input type="checkbox"/> Custody seal intact Yes <input type="checkbox"/> No <input type="checkbox"/>																																																																																																							
				Cooling Initiated <input type="checkbox"/>																																																																																																							
				INITIAL COOLER TEMPERATURES °C: 0.5   0.1   FINAL COOLER TEMPERATURES °C: 3.5°C																																																																																																							
<b>SHIPMENT RELEASE (client use)</b>		<b>INITIAL SHIPMENT RECEPTION (lab use only)</b>		<b>FINAL SHIPMENT RECEPTION (lab use only)</b>																																																																																																							
Released by: _____ Date: _____ Time: _____		Received by: <i>[Signature]</i> Date: 26 Mar Time: 9:55		Received by: Paige Date: Mar 27 Time: 14:25																																																																																																							



Chain of Custody (COC) / Analytic:  
Request Form



COC Number: 14 -

Canada Toll Free: 1 800 668 9878

L1436273-COFC

Page \_\_\_ of \_\_\_

www.alsglobal.com

<b>Report To</b>		<b>Report Format / Distribution</b>			<b>Select one or two levels below (Rush Turnaround Time (TAT) is not available for all tests)</b>																											
Company: EDI		Select Report Format: <input checked="" type="checkbox"/> PDF <input checked="" type="checkbox"/> EXCEL <input checked="" type="checkbox"/> EDD (DIGITAL)			R <input type="checkbox"/> Regular (Standard TAT if received by 3 pm - business days)																											
Contact: Meighan Kearns		Quality Control (QC) Report with Report <input type="checkbox"/> Yes <input type="checkbox"/> No			P <input checked="" type="checkbox"/> Priority (2-4 bus. days if received by 3pm) 50% surcharge - contact ALS to confirm TAT																											
Address: 2195 - 2nd Avenue Whitehorse, YT Y1A 3T8		<input type="checkbox"/> Criteria on Report - provide details below if box checked			E <input type="checkbox"/> Emergency (1-2 bus. days if received by 3pm) 100% surcharge - contact ALS to confirm TAT																											
Phone: 867-393-4882		Select Distribution: <input type="checkbox"/> EMAIL <input type="checkbox"/> MAIL <input type="checkbox"/> FAX			E2 <input type="checkbox"/> Same day or weekend emergency - contact ALS to confirm TAT and surcharge																											
		Email 1 or Fax mkearns@edynamics.com			Specify Date Required for E2,E or P:																											
		Email 2 adrienne.turcotte@gov.yk.ca			<b>Analysis Request</b>																											
<b>Invoice To</b> Same as Report To <input type="checkbox"/> Yes <input checked="" type="checkbox"/> No		<b>Invoice Distribution</b>			Indicate Filtered (F), Preserved (P) or Filtered and Preserved (F/P) below																											
Copy of Invoice with Report <input checked="" type="checkbox"/> Yes <input type="checkbox"/> No		Select Invoice Distribution: <input type="checkbox"/> EMAIL <input type="checkbox"/> MAIL <input type="checkbox"/> FAX																														
Company: EDI		Email 1 or Fax sjenner@edynamics.com																														
Contact: S Jenner		Email 2																														
<b>Project Information</b>		<b>Oil and Gas Required Fields (client use)</b>																														
ALS Quote #: Q38556		Approver ID:			ALK-COL-VA-P-T-COL-VA,IONBALANCE-V			ANIONS-ALL-IC-WR, TDS-CALC-VA			EC-MAN-WR,PH-MAN-WR			TSS-LOW-WR			CARBONS-TOC-VA,NI13-F-VA			CARBONS-DOC-VA			MET-T-COMS-VA,ZR-T-MS-VA			MET-O-COMS-VA,ZR-D-MS-VA			HARDNESS-CALC-VA			Number of Containers
Job #: 13-Y-0452		GL Account:			Cost Center:																											
PO / AFE:		Activity Code:			Routing Code:																											
LSD:		Location:																														
ALS Lab Work Order # (lab use only)		ALS Contact:			Sampler: JM/BSA																											
ALS Sample # (lab use only)	Sample Identification and/or Coordinates (This description will appear on the report)			Date (dd-mmm-yy)	Time (hh:mm)	Sample Type											Short Holding Time Rush Processing	5														
	NF2-B3			25 Mar 14	11:20	GRAB																										
	X2			"	10:45	"																										
	X10			"	09:55	"																										
	Field Blank			"	13:10	"																										
	X3A			"	10:20	"																										
	NF1			"	12:10	"																										
	R8			"	12:50	"																										
	TRAVEL BLANK			-	-	-																										
<b>Drinking Water (DW) Samples<sup>1</sup> (client use)</b>				<b>Special Instructions / Specify Criteria to add on report (client use)</b>				<b>SAMPLE CONDITION AS RECEIVED (lab use only)</b>																								
Are samples taken from a Regulated DW System? <input type="checkbox"/> Yes <input type="checkbox"/> No				Use CH2M_EQUIS for EDD.				Frozen <input type="checkbox"/> SIF Observations Yes <input type="checkbox"/> No <input type="checkbox"/>																								
Are samples for human drinking water use? <input type="checkbox"/> Yes <input type="checkbox"/> No								Ice packs Yes <input type="checkbox"/> No <input type="checkbox"/> Custody seal intact Yes <input type="checkbox"/> No <input type="checkbox"/>																								
								Cooling Initiated <input type="checkbox"/>																								
								INITIAL COOLER TEMPERATURES °C					FINAL COOLER TEMPERATURES °C																			
													3.5°C																			
<b>SHIPMENT RELEASE (client use)</b>				<b>INITIAL SHIPMENT RECEPTION (lab use only)</b>				<b>FINAL SHIPMENT RECEPTION (lab use only)</b>																								
Released by:		Date:		Time:		Received by:		Date:		Time:		Received by: Paige		Date: Mar 27		Time: 14:25																

REFER TO BACK PAGE FOR ALS LOCATIONS AND SAMPLING INFORMATION

WHITE - LABORATORY COPY YELLOW - CLIENT COPY

NA-FM-00276 v09 Form04 January 2014

Failure to complete all portions of this form may delay analysis. Please fill in this form LEGIBLY. By the use of this form the user acknowledges and agrees with the Terms and Conditions as specified on the back page of the white - report copy.