

**PROJECT COMPLETION REPORT
ELECTRICAL ASSESSMENT
FARO MINE COMPLEX – FARO, YT**



PREPARED FOR:

Yukon Government
Department of Energy, Mines and Resources
Assessment and Abandoned Mines Branch
P.O. Box 2703
Whitehorse, YT
Y1A 2C6

PREPARED BY:

Denison Environmental Services
Faro Care and Maintenance Project
4109 4th Avenue
Suite 207
Whitehorse, YT
Y1A 1H6



March 31, 2010



**Denison
Environmental
Services**

a division of Denison Mines Inc.

TABLE OF CONTENTS

1.	INTRODUCTION.....	1
1.1	Background.....	1
1.2	Project Summary	2
2.	SCOPE.....	3
2.1	Original Scope	3
2.2	Scope Revisions	3
3.	SCHEDULE.....	4
4.	BUDGET	4
5.	AYFN PARTICIPATION.....	4

List of Tables

Table 1	Initial Project Cost Estimate
Table 2	Bid Summary
Table 3	Contractor Cost Summary
Table 4	Project Cost Summary

List of Figures

None

List of Appendices

Appendix A	Scope of Work
Appendix B	Dorward Proposal
Appendix C	Final Report

1. INTRODUCTION

1.1 Background

As of March 1, 2009, The Yukon government Department of Energy, Mines and Resources - Assessment and Abandoned Mines Branch (YG) has assumed responsibility for the Faro Mine Complex (FMC), and Denison Environmental Services (DES) has been awarded a contract to provide care and maintenance services at the FMC.

Given the age and condition of the existing electrical infrastructure at the FMC, an assessment of the electrical infrastructure was required to provide a better understanding of the current condition, the outstanding major maintenance requirements and the capacity of the system to support potential expansion of electrical use on-site.

DES proposed to YG that the project consist of consulting with a qualified electrical engineer to assess the existing infrastructure and provide DES and YG with a report outlining how recommended improvements may be advanced.

At the time of development of the project, the current system of Scope, Schedule and Budget (SSB) had not been defined or implemented. For this reason the project proceeded with DES developing a Scope of Work and asking qualified Electrical Engineering Consultants to propose. This Project Completion Report documents the project management components of the Electrical Assessment Project, including:

- Scope of work,
- Schedule, and
- Budget.

1.2 Project Summary

DES developed a Scope of Work (SOW) for the project and provided that SOW to two Yukon-based and one out-of-territory based consultants for proposals. Following review of proposals, the project was awarded to Dorward Engineering (Dorward) of Whitehorse. Dorward visited the site to inspect the electrical infrastructure in June of 2009. Dorward made several recommendations as a result of his site visit and follow up work, which are contained in the final report (attached in Appendix B).

The project resulted in the following recommendations:

- MCC room general cleaning
- Switchgear and breaker cleaning and servicing
- Electrical distribution expansion at 5 locations
- Electrification of the mechanical shops
- Transformer oil testing and condition assessment
- Development of a single line drawing of site electrical infrastructure
- Faro pit transformer modifications to meet regulatory requirements
- Consolidation of electrical distribution into one MCC room in Faro mill

2. SCOPE

2.1 Original Scope

The Scope of Work included 6 proposed improvements that could potentially be constructed in the near future including:

- Intermediate Tailings Pond – electrical service.
- S – Well pump station – electrical service.
- Emergency Tailings Area (ETA) upgrade electrical service.
- Proposed Grum V-15 pump station – electrical service
- Shop/Warehouse – re route electrical to re establish service
- Mill Treatment System – assess redundancies and suggest options

As well the consultant was asked to investigate the following specifics:

- Mill treatment system-assess redundancies and suggest options
- Electrical demand estimate of consumption
- Energy use study
- Substation tie breaker
- A flow diagram of energy use

The initial report from Dorward was received in June 2009, and the final version was received after several iterations on Feb 20, 2010.

2.2 Scope Revisions

No scope changes were initiated as a part of this project.

3. SCHEDULE

Schedule milestones for this project included:

- May 8, 2009 – Scope of Work package issued to prospective bidders.
- May 14, 2009 – Proposals received
- June 5, 2009 – Dorward clarification letter.
- June 8, 2009 – Project awarded to Dorward Engineering.
- July 30, 2009 – Draft report received.
- February 20, 2010 – Final report received.

4. BUDGET

Dorward's original proposal estimated a cost of \$15,934.80 with a potential variance of -30 to +50%. Dorward's final invoice for this work was \$16,298.10.

5. AYFN PARTICIPATION

Due to the specialised technical nature of the work, there was no Affected Yukon First Nation participation.

TABLES

**TABLE 1 - INITIAL PROJECT COST ESTIMATE
ELECTRICAL ASSESSMENT
FARO MINE COMPLEX - FARO, YT**

Work Item	Quantity	Units	Unit Rate	Cost
Sr Elec Eng	68	Hr	\$ 180.00	\$ 12,240.00
Elec Eng	8	Hr	\$ 120.00	\$ 960.00
Jr Elec Eng	14	Hr	\$ 100.00	\$ 1,400.00
Elec Tech	7	Hr	\$ 65.00	\$ 455.00
Disb	1	LS	\$ 879.80	\$ 879.80
Total				\$ 15,934.80

Notes:

1. Internal DES costs and PAW mark-up were not included in the above.

**TABLE 2 - BID SUMMARY
ELECTRICAL ASSESSMENT
FARO MINE COMPLEX - FARO, YT**

DORWARD	HATCH	ORBIS
(\$)	(\$)	(\$)
\$ 15,934.80	\$ 36,209.00	No Price
Total	Total	Total

**TABLE 3 - CONTRACTOR COST SUMMARY
ELECTRICAL ASSESSMENT
FARO MINE COMPLEX - FARO, YT**

Work Item	Quantity	Units	Unit Rate	Cost
Sr Elec Eng	76.00	Hr	\$ 180.00	\$ 13,680.00
Elec Eng	9.68	Hr	\$ 120.00	\$ 1,161.60
Jr Elec Eng	0.33	Hr	\$ 100.00	\$ 33.00
Elec Tech	7.50	Hr	\$ 85.00	\$ 637.50
Disb	1	LS	\$ 786.00	\$ 786.00
Total				\$ 16,298.10

Notes:

1. Internal DES costs and PAW mark-up are not included in the above.

**TABLE 4 - PROJECT COST SUMMARY
ELECTRICAL ASSESSMENT
FARO MINE COMPLEX - FARO, YT**

Work Item	Quantity	Units	Unit Rate	Cost
Sr Elec Eng	76.00	Hr	\$ 180.00	\$ 13,680.00
Elec Eng	9.68	Hr	\$ 120.00	\$ 1,161.60
Jr Elec Eng	0.33	Hr	\$ 100.00	\$ 33.00
Elec Tech	7.50	Hr	\$ 85.00	\$ 637.50
Disb	1	LS	\$ 786.00	\$ 786.00
Subtotal				\$ 16,298.10
PAW Markup		\$	15%	\$ 2,444.72
Total				\$ 18,742.82

APPENDIX A

SCOPE OF WORK



Denison
Environmental
Services
a division of Denison Mines Inc.



FARO MINE COMPLEX

Electrical Assessment – Scope of Work

May 8, 2009

Background:

The Faro Mine Complex, (formerly known as the Anvil Range mine) located about 22.5 km north west of the Town of Faro, Yukon is a former lead and zinc mine operation. It shut down permanently in 1998. An environmental care and maintenance program continues to operate in treating acidic and zinc contaminated water from the various rock dumps as well as the tailings management area.

The Yukon Government (Energy, Mines and Resources) is now in control of the Faro Mine Complex and Denison Environmental Services (DES) has been awarded a contract to provide care and maintenance services.

The mining operation over the course of 30 years extracted ore from three open pits, Faro, Grum and Vangorda Pit. The Faro Pit was developed and mined first, followed by the Vangorda and Grum Pits, which are located about 13 km east of the Faro site.

A 138 kV power line was constructed to the Faro side of the property in the late 1960's and in the late 1980's; a 69 kV power line was constructed to the east side of the property where the Vangorda and Grum Pits are located.

For the ongoing care and maintenance work, there continues to be a need for electrical power to the entire site.

Proposed Electrical Assessment:

In managing the environmental as well as the health and safety aspects of the site, it is realized that electrical changes need to be considered. These changes not only affect the short term planning improvements for the care and maintenance, but also affect how future reclamation and site rehabilitation projects need to be addressed.

ELECTRICAL ASSESSMENT – SCOPE OF WORK

May, 2009

There are six (6) proposed improvements in the next few months that require investigation with respect to the electrical distribution system. They are:

1. Intermediate Tailings Pond – electrical service.
2. S – Well pump station – electrical service.
3. Emergency Tailings Area (ETA) upgrade electrical service.
4. Proposed Grum V-15 pump station – electrical service
5. Shop/Warehouse – re route electrical to re establish service
6. Mill Treatment System – assess redundancies and suggest options

Scope of Work:

The scope of work will involve investigating thoroughly the existing electrical infrastructure, distribution system and make recommendations for short and long term care and maintenance activities. Assessing estimated electrical loads in the future and determine if there are any changes to the power line voltages and transformations to suit the anticipated electrical loads and be more cost effective for future operations. Power line routing also needs to be addressed at this time in light of upcoming site rehabilitation activities.

In addressing this task a site visit is required. As per the improvement projects listed below, include a brief report explaining recommendations complete with a cost estimate for implementation.

1. Intermediate Tailings Pond pumping station – details of pump sizing etc is not determined, but it is expected that an electrical service be available that could power up to 300 hp of electrical energy.
2. S-Well pump station – a 62.5 kVA generator unit, powered by a diesel engine currently generates the required electricity for this pump station. There are two (2) options that need to be assessed in determining the best option to provide grid power. The current generator will become a standby unit in case of power outages.
3. Emergency Tailings Area (ETA) – electricity provided to this area currently powers a 30 hp submersible pump. Future management of this water may involve installing a system that would require up to 100 hp of electrical energy. Investigate what is required to carry out this option.
4. Proposed Grum V-15 pump station – This is a new proposal. It will be a similar pump station to the S-Well system. It will require about 1.0 km of power line construction.

ELECTRICAL ASSESSMENT – SCOPE OF WORK

May, 2009

5. Shop Electricity – While the mine was operating, electricity was routed via conveyor tunnels through to the crusher building and then overhead to the shop and warehouse building. The tunnels have since become inundated by water and electricity is no longer available. For immediate public health and safety concerns as well as ongoing care and maintenance and reclamation projects in the future, it is a requirement to re establish electrical power.
6. Mill Water Treatment System - The seasonal mill water treatment system utilizes the former tankage for lime introduction and mixing as well as the thickeners for precipitating metals. The operation utilizes a small portion of the mill electrical system, however there are transformers operating inefficiently under small loads. An assessment is required to determine the cost significance. Other factors such as the age of the equipment and being in an unheated environment need to be considered in planning future treatment operations.
7. Prepare an estimate of annual electrical demand complete with a review attached estimated breakdown of major electrical power consumers on site (attached). The information is questionable and should be used only as a guide. An updated accurate listing is to be provided as part of the electrical assessment work.
8. Identify opportunities for reducing electrical consumption and provide commentary on the likely cost benefit.
9. Evaluate the potential for closing the S2 Tie in the Substation and if appropriate provide instructions for the same.
10. Review and provide commentary on:
 - a. Removal of the Grum substation from the Grum Loop should pit wall fail.
 - b. Electrical distribution system in the 2 substations at Faro mill with respect to safety when closing and opening switches.
 - c. Critical spares
 - d. Reliability and replacement options in the event of the Faro Pit water barge transformer.
11. Develop specifications and a cost estimate for the installation of new power lines for:
 - a. Intermediate Pond pumping
 - b. Grum V15 pumping
 - c. S – Well pumping

ELECTRICAL ASSESSMENT – SCOPE OF WORK

May, 2009

- d. Energizing the truck maintenance shops
12. Prepare and supply a line drawing showing the main components of the Faro Mine electrical distribution system.

Please review and provide a quotation outlining:

- schedule of rates,
- qualifications
- time frame for site visit, and
- completion of report

Our time line for this work is as follows:

- site visit – proposed for the week of May 19 to 22, 2009
- completion of report by June 5, 2009

Please do not hesitate to contact Roy Morrell at 867 994 2600 regarding any questions.

Roy Morrell
Site Manager

APPENDIX B
DORWARD PROPOSAL



Dorward Engineering Services

3147-3rd Ave
Whitehorse, Y.T.
Y1A 1E9 Canada

tel: (867) 668-6888
fax: (867) 633-4561
e: dorward@ieee.org

Proposal

May 14th 2009

Faro Care and Maintenance Project
Box 280
Faro Y0B 1K0

**Attention: Mr. Roy Morrell
Site Manager**

Dear Mr. Morrell,

Re: Faro Mine Complex – Electrical Assessment

Dorward Engineering (DE) is pleased to provide you with an offer of engineering services for this project.

1. Project Understanding

The Client is Denison Environmental Services (DES). DES has requested an engineering firm provide an electrical assessment of the Faro Mine Complex in relation to the ongoing environmental care and maintenance program. The physical assessment will be followed by a report which will address short term planning improvements as well as future reclamation and site rehabilitation work.

Dorward Engineering Services Ltd. (DE) will assume the role of electrical engineer on this evaluation project.

There are six (6) proposed improvements in the next few months that require investigation with respect to the electrical distribution system. They are listed here and detailed in the scope of work section:

1. Intermediate Tailings Pond – electrical service.
2. S – Well pump station – electrical service.
3. Emergency Tailings Area (ETA) upgrade electrical service.
4. Proposed Grum V-15 pump station – electrical service
5. Shop/Warehouse – re route electrical to re establish service
6. Mill Treatment System – assess redundancies and suggest options

2. Scope of Work

The scope of work will involve investigating thoroughly the existing electrical infrastructure, distribution system and make recommendations for short and long term care and maintenance activities. The report will include an assessment of estimated future electrical to determine if there are any changes to the power line voltages and transformations to suit the anticipated system and be more cost effective for future operations.

Power line routing also needs to be addressed at this time in light of upcoming site rehabilitation activities.

Dorward Engineering (DE) will include a brief report explaining recommendations complete with a Class 5 cost estimate for implementation of the improvement projects listed below.

1. Intermediate Tailings Pond Pumping Station

Details of pump sizing etc have not been determined, but it is expected that an electrical service be available that could power up to 300 hp of electrical energy. DE will comment on the existing infrastructure and present options for future improvements.

2. S-Well Pump Station

A 62.5 kVA generator unit, powered by a diesel engine currently generates the required electricity for this pump station. DE will assess two (2) options and will recommend the best option to provide grid power. The options will include use of the existing generator as a standby unit in case of power outages.

3. Emergency Tailings Area (ETA)

Electricity provided to the ETA currently powers a 30 hp submersible pump. Future management of this water may involve installing a system that would require up to 100 hp of electrical energy. DE will investigate what is required to carry out this option.

4. Proposed Grum V-15 Pump Station

A new Grum V-15 pump station is proposed. It will be a similar pump station to the S-Well system. It will require about 1.0 km of power line construction. DE will review the proposal and comment on electrical requirements.

5. Shop Electricity

While the mine was operating, electricity was routed via conveyor tunnels through to the crusher building and then overhead to the shop and warehouse building. The tunnels have since become inundated by water and electricity is no longer available. For immediate public health and safety concerns as well as ongoing care and maintenance and reclamation projects in the future, it is a requirement to re-establish electrical power. DE will review the existing infrastructure and make recommendations for the establishment of power supply to the shop.

6. Mill Water Treatment System

The seasonal mill water treatment system utilizes the former tankage for lime introduction and mixing as well as the thickeners for precipitating metals. The operation utilizes a small portion of the mill electrical system and there are transformers operating inefficiently under small loads. DE will provide an assessment of the system and determine the cost significance of options for powering the treatment facility. Factors such as the age of the equipment and its location in an unheated environment will be considered in planning future treatment operations.

7. Energy Use Study - Estimate of Consumption

DE will prepare an estimate of annual electrical demand complete with a review of the estimated breakdown of major electrical power requirements on the site. The information in the power requirements estimate that has been provided will be used as a starting point and as a guide. As new information is produced an updated accurate listing will be prepared.

8. Energy Use Study - Cost Benefit Analysis

DE will identify opportunities for reducing electrical consumption and provide commentary on the likely cost benefit.

9. S2 Substation Tie Breaker

DE will evaluate the potential for closing the S2 Tie in the Substation and if appropriate provide instructions for the same.

10. Distribution System

a. Grum Substation and Loop Line

DE will review and provide commentary on the possibility of removing the Grum substation from the Grum Loop should the pit wall fail.

a. Mill Substation Switches

DE will review the electrical distribution system at the 2 substations in the Faro Mill with respect to safety when closing and opening switches.

c. Faro Pit

DE will discuss reliability and replacement options in the event of failure of the Faro Pit water barge transformer.

d. General Maintenance

DE will provide recommendations for on going maintenance and critical spares for the medium voltage distribution system.

11. Power Line Replacement

DE will develop general specifications and a cost estimate for the installation of new power distribution lines for:

- a. Intermediate Pond pumping
- b. Grum V15 pumping
- c. S – Well pumping
- d. Energizing the truck maintenance shops

12. Single Line Diagram

DE will prepare and supply a line drawing showing the main components of the Faro Mine electrical distribution system. The single line will be complete as possible and will be based on site conditions and any existing plans available.

3. Schedule of Rates

We propose that the electrical assessment be completed on a cost plus basis. Our charge out rate summary is presented below.

Personnel:

Ross Dorward, P.Eng	\$180/hr
Sandeep Sharma, EIT	\$120/hr
Corry Martin, B.Eng.	\$100/hr
Support	\$ 65/hr

Travel costs will be as per Treasury Board guidelines.

4. Qualifications

Ross Dorward will be the lead on this project and will conduct the on-site assessment work. Ross has experience at the mine site and has made prior recommendations in regard to energy use. On a previous project (2001 Anvil Range Mining Corporation Interim Receivership Energy Audit) Ross identified the potential for \$33,000 per month savings on electrical operating costs. DE company archives contain background information for the previous report as well as as-built and single line drawings that were drafted from site notes taken during Ross's three day site visit in September 2001. Ross's practical background in the trades and long field experience in industrial settings will add depth to the findings of the report.

DE company profile, company experience list and staff resumes are appended for your detailed review.

5. Schedule

In addressing the required tasks a site visit is required. We would like to schedule a site visit for Monday June 1st with the option open to stay to as long as June 4th to cover the entire site and discuss issues and options with the onsite team. Once the site visit is complete a draft report will be prepared.

We expect that delivery of the draft report to be June 30th followed by the client's review and subsequent finalization.

FARO MINE COMPLEX
Electrical Assessment
Proposal for Services
May 14, 2009

We trust that you will find that this proposal meets with your approval and thank you again for considering our firm. Should you have any questions or concerns, please do not hesitate to contact the Ross at 867-668-6888, 867-334-1936 or by email at dorward@ieee.org

Sincerely,

Dorward Engineering Services
Ross Dorward, P.Eng.



Dorward Engineering Services

3147-3rd Ave
Whitehorse, Y.T.
Y1A 1E9 Canada

tel: (867) 668-6888
fax: (867) 633-4561
e: dorward@ieee.org

Proposal Clarification

June 5th 2009

Faro Care and Maintenance Project
Box 280
Faro Yukon
Y0B 1K0

Attention: Mr. Roy Morrell
Site Manager – Faro Care and Maintenance Project

Dear Mr. Morrell,

Re: Faro Mine Complex – Electrical Assessment

Thank you for your interest in our proposal. I would like to assure you that we have read the proposal call in detail and understand each of the tasks presented.

Our proposed time budget does not include production of detailed plans and specifications for the tasks presented. Our understanding is that we will examine in detail the conditions of each of the problems and present directions for a course of action which will result in resolution of the problem for the long term. A cost exercise will be a major component of the recommendations. We expect that additional investigation of options or additional costing may result from our initial work and our draft report.

Our time estimate is based upon our understanding of the problems and is based upon previous work at the Faro mine site. Most of the electrical problems were in existence when we provided our report to Yukon Energy Corporation. Our previous experience is an asset for this project and was a tremendous asset in the preparation of our proposal. Again our intention is to provide direction and a work plan with general specifications so that immediate construction, detailed engineering, or design build projects can be generated.

Our long term goal is to be considered for additional engineering work in the future and we place a lot of confidence in our ability to be an asset to your team.

To address the possibility of engineering cost overruns on the electrical assessment project I would place our engineering estimate in the Class 5 category (-30% to +50%). Engineering cost overruns above the upset limit (our cost estimate) will be fully accounted for and subject to Denison Environmental Services approval.

We are confident that our work will be to your satisfaction and thank you again for considering our firm. Should you have any questions or concerns, or require further clarification please do not hesitate to contact the Ross at 867-668-6888, 867-334-1936 or by email at dorward@ieee.org

Sincerely,

Dorward Engineering Services
Ross Dorward, P.Eng.

APPENDIX C
FINAL REPORT

Faro Mine Care and Maintenance Project Faro, Yukon

Electrical Assessment Report

Prepared for:

Denison Environmental Services
Box 280
Faro, Yukon Y0B 1K0
Attn: Roy Morrell

Prepared by:

Ross Dorward, P.Eng.
Dorward Engineering Services Ltd.
Unit 402- 309 Strickland Street
Whitehorse, Yukon Y1A 2J9

Tel: 867-668-6888
Email: dorward@ieee.org

February 2010



Dorward Engineering Services
Unit 402 – 309 Strickland Street
Whitehorse, Y.T. Y1A 2J9

Phone 867.668.6888
Fax 867.633.4561

February 23, 2010

Faro Care and Maintenance Project
Box 280
Faro Yukon
Y0B 1K0

Attention: Mr. Roy Morrell
Site Manager – Faro Care and Maintenance Project

Dear Mr. Morrell,

Re: Faro Mine Complex – Electrical Assessment

Enclosed please find our final report titled 'Faro Mine Care and Maintenance Project – Electrical Assessment – Feb 2010'.

This final report reflects comments received subsequent to submission of our draft report. We have examined in detail the conditions of each of the areas of concern and in our report present recommendations for remediation. You will find that our recommendations are constructed in such a way as to address the issues identified with long term cost effective solutions.

Cost estimates have formed a major component of the recommendations. Our estimates are based upon our assessment of the problems and based upon previous work conducted in the Faro area. Our intention is to provide direction and a work plan outline so that that immediate work plans, detailed engineering, or design build projects can be initiated.

We are confident that our work will be to your satisfaction and thank you again for the opportunity to provide this service. Should you have any questions or concerns, or require further clarification please do not hesitate to contact the Ross at 867-668-6888, 867-334-1936 or by email at dorward@ieee.org

Sincerely,

Dorward Engineering Services
Ross Dorward, P.Eng.

Table of Contents

1.0	Introduction	1
2.0	Electrical Service – General	1
2.1	Electrical Service to the Intermediate Tailing Pond.....	2
2.2	Electrical Service to the S- Well Pump Station.....	2
2.3	Electrical Service to the Emergency Tailings Area (ETA).....	3
2.4	Electrical Service to the Proposed Grum V-15 Pumping Station.....	4
2.5	Electrical Service to the Shop.....	4
3.0	Evaluation of the Mill Water Treatment System.....	5
4.0	Energy Use.....	6
4.1	Estimate of Consumption.....	6
4.2	Energy Cost.....	7
5.0	S2 Substation Tie Breaker.....	7
6.0	Mine Site Distribution System.....	7
6.1	Grum 69 kV Substation.....	7
6.2	Mill Medium Voltage Switches.....	8
6.3	Faro Pit Transformer.....	8
6.4	General Maintenance.....	9
7.0	Single Line Diagram.....	9
8.0	Electrical Safety.....	10
8.1	Arc Flash Safety.....	10
8.2	General Maintenance.....	10
8.3	Lighting.....	10
8.4	Office Supply Indoor Substation.....	10
8.5	Faro to Grum Line 5 kV Feeder.....	10
8.6	Faro Pit 4160/600 V Transformer.....	10
8.7	Faro to Grum 69 kV Pole Line.....	10
9.0	Summary of All Recommendations.....	11
9.1	5 kV Line Extensions.....	11
9.2	MCC Room Consolidation.....	11
9.3	Equipment Cleaning, Calibration and Labelling.....	11
9.4	Faro Pit 5 kV Transformer.....	11
9.5	General Maintenance.....	11
9.6	Improve Mill Lighting.....	11
9.7	Office Sub Station Replacement.....	11
9.8	Faro to Grum Line 5 kV Feeder Repair.....	11
9.9	Faro to Grum 69 kV Pole Repairs.....	11
10.0	Cost Summary Table.....	12

List of Appendices

Appendix A Power Line Routing - Figure 1.0
Power Line Routing – Figure 2.0

Appendix B Annual Cost Worksheet

Appendix C Single line Diagram

Appendix D MCC Rooms 3 and 3E
Heating Plant MCC Room

1.0 Introduction

Mining activities in the Faro area ceased in 1998. After a period of receivership, control of the mine complex passed to the Yukon Government's (YG) Department of Energy, Mines and Resources. YG has awarded a contract to Denison Environmental Services (DES) to provide care and maintenance services at the site.

For on going care and maintenance work, there is a need for electrical power to the entire site. In managing the environmental and health and safety aspects of the site electrical changes need to be considered. These changes affect both short and long term planning improvements for care and maintenance as well as how future reclamation and site rehabilitation projects need to be addressed.

In order to assess the current conditions and make recommendations DES contracted Dorward Engineering Services Ltd. to conduct an electrical assessment of the site.

The requested scope of work for the electrical assessment includes five (5) proposed improvements that require investigation with respect to extension of the electrical distribution system. They are:

- Intermediate Tailings Pond (ITP) – electrical service.
- S – Well pump station – electrical service.
- Emergency Treatment Area (ETA) - upgrade electrical service
- Proposed Grum V-15 Pumping Station – electrical service.
- Shop/Warehouse – re route electrical to re-establish service.

As well the consultant was asked to investigate the following specifics:

- Mill Treatment System – Assess redundancies and suggest options
- Electrical Demand Estimate of Consumption
- Energy Use - Cost
- Substation Tie Breaker
- Mine Distribution System
 - Grum 69 kV Substation
 - Mill Medium (5 kV) Voltage Switches
 - Faro Pit Transformer
 - General Maintenance
- Single Line Diagram
- Electrical Safety Issues

2.0 Electrical Service – General

Electrical energy is distributed throughout the Faro plant and adjacent site by an extensive 5 kV volt distribution system. Since pumping requirements on the site vary it is recommended that power line extensions be sized with sufficient capacity for changes in the near future.

In order to provide flexibility it is recommended that the 5 kV systems be extended to new pumping sites. For example if a #2 aluminum conductor steel reinforced (ACSR) cable is chosen as a standard the new lines will support up to 1000 HP at most sites.

2.1 Electrical Service to the Intermediate Tailing Pond

The lift pump at the intermediate tailings pond (ITP) is currently a diesel driven unit. Fuel and maintenance costs are of concern. During operations the pump incurs a cost of approximately \$75 per day for maintenance service and consumes a significant amount of fuel.

In order to reduce operating costs and provide more reliable operations it is recommended that the pump be converted to electrical supply. In order to supply electrical energy to the site it is proposed that a 5 kV transmission line be extended from the mill area to the ITP. This line should also extend to and have sufficient capacity for future pumps that may be required at the Cross Valley Dam (CVD) site. At this time transformers with a capacity of 500 HP will be installed at the ITP. No Transformers will be installed at the CVD as the exact pumping requirement is unknown.

Work Plan as Follows:

- Engineering costs
- Approximately 2600 Meters of 5kV Line (1900m +700m)
- 500 HP transformer bank at ITP site.
- Allowance for 100 HP at CVD – no transformer bank this time
- Line breaks and fusing

Estimated that the cost of this work: \$180,000.

Proposed routing of the line is indicated as ITP and CVD dam on figure 1.2 Appendix A.

2.2 Electrical Service to the S- Well Pump Station

The well and booster pumps at the S-well site are currently operated at 600 volts; with power supplied from a portable 62.5 kVA generator unit. Winter operation is the norm.

The engineer was asked to investigate two options for providing power from the grid. The first option investigated was the installation of a drop from the adjacent 69 kV Grum line. The second option was to extend the existing 5 kV Z2 line which is an extension of the Faro Pit Line.

Discussions with contractors active with 69 kV transmission line work indicate that an overhead structure to provide a power drop from the 69 kV Grum line is not possible and that the power drop would require the construction of a grade level substation. Costs for a grade level substation are estimated to be in the range of \$200,000 to \$300,000.

For this reason as well as for infrastructure standardization it is recommended that the S- well location be energized by extension of the 5 kV Z2 line.

Work Plan as Follows:

- Engineering costs
- Approximately 750 Meters of 5kV Line
- 100 HP transformer bank at S-well generator house
- Line breaks and fusing

- Secondary (600V) connections
- Re-vamp existing distribution for utility supply

Estimated that the cost of this line including transformers and secondary connections: \$65,000.

Proposed routing of the 5 kV line extension is indicated as S-Well on the site plan figure 1.2 Appendix A.

Since pumping at the S-well is critical and year round it is recommended that the need for back up power be assessed. The existing generator could be reused as a backup power source however extensive upgrading will be required to the housing structure in order to provide cost effective winter operations.

Based on a possible double in horsepower at the well site a 40 to 60 KW unit is recommended. This unit can be provided turn key in a winter ready enclosure.

Work Plan as Follows:

- Engineering
- Winter ready skid mount enclosure with R40 roof, R20 walls, R20 floor
- 40 to 60 kW generator
- Integral automatic fuel system
- Integral automatic ventilation system
- Automatic transfer switch
- 600 volt distribution
- Shipping and install

Estimated cost of an enclosed unit: \$160,000.00.

2.3 Electrical Service to the Emergency Tailings Area (ETA)

600 volt electrical service is provided to this area via a #6 AWG copper SOW cable run down the hill from the 4160 volt yard distribution. The line provides power for a 30 HP and a 5 HP pump. The existing cable installation is temporary as SOW cable does not meet minimum code requirements for a permanent installation.

It is expected that up to 100 HP permanent capacity for pumping to the Faro pit will be required in the future. In order to achieve this and to correct the code violation, an upgrade of the electrical supply is required.

Two options warrant consideration for upgrading power to the site:

- Option one consists of replacing the existing 600 volt SOW cable with a larger armored Teck cable suitable for the increased HP. It is recommended that the cable be buried. Work plan as follows:
 - Engineering
 - Install approximately 200 Meters of Teck cable
 - Cover by others
 - 600 Volt connections, either end

- Option two extends the 5 kV overhead distribution system. Work plan as follows:
 - Engineering
 - Install approximately 200 meters of overhead line to the site
 - Line breaks and fusing
 - Relocate existing transformer bank to the site
 - Provide 600 Volt connections to existing distribution at site

Both options carry a similar cost in the \$30,000 to \$40,000 range. However, for standardization, reliability and increased capacity the 5 kV line extension is the recommended option for this site.

Proposed routing of the 5 kV line extension is indicated as ETA on the site plan figure 1.2 Appendix A.

2.4 Electrical Service to the Proposed Grum V-15 Pumping Station

There is currently no power available at this site. It is recommended that 5 kV Grum distribution be extended to this area. HP requirement has not been determined but assuming a #2 conductor there will be capacity in excess of expected requirements.

Work plan as follows:

- Engineering
- Approximately 700 Meters of 5kV Line
- Line breaks and fusing
- Transformer bank costs not included (load not determined)
- Line breaks and fusing

Estimated that the cost of this line excluding transformers and secondary connections: \$70,000.

Proposed routing of the 5 kV line extension is indicated as V-15 Option #1 and Option #2 on the site plan figure 2 Appendix A.

2.5 Electrical Service to the Shop

While the mine was operating, a 5 kV distribution line was routed via conveyor tunnels through to the crusher building and then overhead to the shop and warehouse building. The tunnels have since become inundated by water and electricity is no longer available from this routing..

It is recommended that the entrance line be re-routed to the north east of the crusher building to tie into the Faro pit line. It is recommended that the line be routed as far from the crusher building as possible so that during demolition of the crusher building sufficient clearance exists between the demolition site and the power line.

Work plan as follows:

- Engineering
- Approximately 400 Meters of 5kV Line
- Line breaks and fusing
- 5kV connections at shop

Estimated cost: \$35,000.

Proposed routing of the 5 kV line extension is indicated as SHOP on the site plan figure 1.2 Appendix A.

3.0 Evaluation of the Mill Water Treatment System

The seasonal mill water treatment system utilizes the former mill tankage for lime introduction and mixing as well as the addition of thickeners for precipitating metals. It is expected that the plant will continue operations in the current configuration in the short term. For the purpose of this report, short term is considered to be a period of up to ten years.

The mill treatment operation utilizes a small portion of an extensive mill electrical system and there are transformers operating inefficiently under small loads.

In many locations 5 kV substations are energized for the sake of one or two motors or 120/208 panels. Operating this way is inefficient as core losses are a constant regardless of loads.

In order to save energy, simplify operations and improve safety it is recommended that the various Motor Control Centres (MCC's) in use be consolidated and supplied from one or two substations.

Depending upon the outcome of further engineering it may be possible to complete this work in house with the present workforce. Otherwise a detailed work plan can be developed and a contractor can be hired. It is expected that outside contractor(s) would work under the daily supervision of the site electrician.

Work plan as follows:

- Engineering
- Decommission redundant 5 kV equipment
- Combine required MCC feeders to single transformer
- Re-route motor feeders to selected MCC's
- Test all cables/equipment and provide reports
- Provide revised single line diagram and site labels.

A preliminary engineering/construction budget of \$150,000 could be set at this time.

As Built layout drawings of the MCC rooms have been prepared and are attached in Appendix "D"

4.0 Energy Use

4.1 Estimate of Consumption

Formal estimates of consumption are not available at this time. Information was provided to the engineer by the client for the purpose of estimating consumption. The information provided to date has been assembled into an Annual Cost Worksheet which is attached in Appendix B.

Denison staff have committed to providing additional information required in order to complete the annual cost worksheet.

The following list of comments is provided for consideration for potential cost effective conservation measures:

- Pumping Operations
 - Most of the electrical energy used on the site is utilised by electric motors involved with pumping, transfer and treatment operations.
 - Changes to the entire pumping system are ongoing. Energy efficiency should be considered with every operational change implemented.
- Water Treatment
 - The existing mine ore processing plant (mill) is being utilized to treat the majority of the contaminated water on site. A large number of the motors in use are oversized and are operating inefficiently
 - Investment in equipment replacement is not expected to produce significant savings given the ten year or less life expectancy of the plant
- Lighting systems
 - Repair/replace lighting systems site wide
 - De-energize redundant transformers and ballasts in the mill.
 - Install automatic lighting controls site wide i.e. photocells/motion sensors
- Heating systems
 - Upgrade insulation for heated areas of the plant and outbuildings
 - Upgrade insulation on piping systems utilized in the winter months

The savings realized by performing these tasks should be considered as part of a full analysis of the total cost of operation. It is not expected that savings will be significant in regard to the total electrical cost, since the pumping consumes the greatest amount of electricity.

As pumping operations move from seasonal to year round there will be an increased requirement for pipeline heating. Operations in the winter months will also trigger increased demand charges by the utility since the demand charge is not reset on a monthly basis during the winter months.

There will also be load growth associated with the conversion from diesel pumping to electric, by the use of the new water well, the use of the shop and by increases expected in pumping demands site wide.

4.2 Energy Cost

The current energy charge is \$0.1207 per kWhr. This will increase to \$0.1274 per kWhr January 1st 2010.

The current demand charge is \$11.56 per kW demand. This will increase to \$12.20 per kW January 1st 2010.

5.0 S2 Substation Tie Breaker

It has been suggested that the feeder from one of the two 138/5 kV utility transformers be opened and that the S2 substation tie breaker be closed to supply the complex from one utility transformer. The second transformer could be de-energized thus saving core losses.

Since the mine site metering is downstream from the utility transformers this would not result in savings to the Care and Maintenance Project.

Indications are that the Utility prefers to leave both transformers energized in order to reduce maintenance costs.

6.0 Mine Site Distribution System

6.1 Grum 69 kV Substation

An overhead line operating at 69 kV delivers power to the Grum and Vangorda pits. This line is supplied from the 5 kV volt system at the faro mill with voltage transitions step up and step down at the respective ends of the line.

The capacity of the step up and step down transformers is 10 MVA. 10 MVA is well above what is required for the treatment and pumping operations at Grum and Vangorda pits. Suggestions have been made to replace the transformers with transformers of smaller size or to reduce the operating voltage of the line.

Since final pumping requirements for the long term have not been determined it is premature to consider this option.

Currently, by agreement, the power utility maintains the cost of powering the 69 kV line during the winter months. It is advantageous to maintain this agreement since the transformers are better served if they remain warm year round.

A concern has been raised regarding the stability of the Grum pit wall. There is a possibility of failure of the wall and the possibility that the failure could envelope the 69 kV Grum substation. It is understood that the risk associated with pit wall movement is being assessed by geotechnical engineers and this issue will be further addressed in the annual risk assessment.

Relocating the substation will be costly and somewhat time consuming. It is estimated that to rebuild/relocate the substation in a more desirable location within 500 meters of the present site could cost approximately \$300,000. This cost estimate is based on a construction time frame of one summer

season. A reduced construction time is possible but would come with higher cost.

Further engineering is required to determine a more accurate cost.

6.2 Mill Medium Voltage Switches

The existing mill and site electrical infrastructure was installed in the early '70s (MCC Room #3) with a major expansion in 1980 (MCC Room #3E). Indications are that the equipment has had little maintenance in the past 15 to 20 years. Equipment of this type requires regular maintenance, calibration and safety labels as per code requirements

All the medium voltage switchgear in use should be cleaned and the protective relays should be re-calibrated (or replaced).

Current codes (Canadian Electrical Code C22.1) require that all distribution equipment be labelled for the Hazard/Risk Category present due to the possibility of Arc flash.

Work plan as follows:

- Engineering
- Clean all 4160 and 69 kV equipment in use.
- Calibrate or replace all protective relays
- Perform thermal scan of equipment
- Test equipment and provide reports
- Label equipment as per the requirements of CEC 22.1.
- Label decommissioned equipment and operating equipment

Until an inventory is completed it is difficult to estimate the cost of this work, however it is expected that this work would require a crew of 2 to 4 technicians on site for up to a month. Preliminary estimate at this time: \$200,000.00

6.3 Faro Pit Transformer

The three pumps located in the Faro pit are supplied from a single oil filled transformer. Concern has been raised regarding the age of the transformer in regard to its reliability, the cost of operating the transformer since it is oversized, the safety of the road crossing and the safety of the skid mount unit in regard to its lack of compliance to current codes.

There are two options for correcting the installation:

- Option one consists of replacing the transformer with a new overhead structure and new transformers. Work includes:
 - Engineering
 - Remove cables and connections to existing transformer. Utilize the transformer as an emergency spare.
 - Install new 450 kVA transformer bank on existing pole
 - Install 600 volt secondary connections to the pumphouse

- Option two involves upgrading the existing installation to meet current codes. Work includes:
 - Engineering
 - Install fencing around transformer to the requirements of the Canadian Electrical Code C22.2.
 - Install touch and step grounding to the requirements of the Canadian Electrical Code C22.2.
 - Perform ground resistance and infrared scan tests on the transformer.
 - Perform oil test on the transformer.
 - Install new 5kV drop from the existing pole (Teck cable drop - cut and cover by others).

Both options carry a similar cost in the \$25,000 to \$35,000 range.

It is recommended that detailed cost benefit analysis be undertaken to determine the best course of action to address the issues identified.

6.4 General Maintenance

As indicated in previous sections it is recommended that specific maintenance projects be put in place. In addition to these projects the following are recommended:

- Clean all MCC rooms
- Re-lamp all MCC rooms/replace ballasts
- Replace covers on exposed wiring
- Perform thermal scan of transformer connections and windings
- Perform Oil Sample Tests
- Provide Maintenance Reports for above work.

7.0 Single Line Diagram

Only minimal electrical distribution single line drawing records are available for the 4160 volt, 347/600 volt and 120/208 volt distribution systems. During the engineer's site visit the mill drawing store room was searched and all relevant electrical drawings were taken for reproduction in Whitehorse. The important drawings have been copied (paper photo copy) and all of the respective originals have been returned to site.

Digital (.pdf) drawings are recommended for some of the most important records. Since scans can be made at any time from the paper nothing has been digitized to date.

An AutoCAD single line drawing has being developed using the paper drawings and information gathered on site. The single line drawing documents the 138 kV utility supply, the 4160 volt switchgear connections, the 600 volt MCC's in use and an outline of the 5 and 69 kV site distribution.

The single line diagram is being developed in sufficient detail to provide bidding contractors the information they require to prepare well informed bids for switchgear cleaning and maintenance.

The single line drawing is presented in Appendix C.

8.0 Electrical Safety

There are several safety concerns which were identified on site. Most critical is the Mill distribution system however similar concerns exist throughout the entire site.

In relative order they are as follows:

- 8.1 Arc Flash Safety:** The medium voltage distribution system site wide (5 and 69 kV) has had little maintenance over the past 20 years. Some equipment would not meet present minimum standards. The work recommended in Section 6.2 should be undertaken.
- 8.2 General Maintenance:** In any working plant there is a need for constant clean up. As housekeeping deteriorates safety hazards are, over time, accepted as the norm. There is a large amount of electrical equipment in various states of functionality in the Mill. There are many instances where covers are off, equipment is exposed and where it is uncertain if voltages are present. Efforts should be taken to isolate and tag all live equipment and remove or decommission redundant equipment.
- 8.3 Lighting:** Lighting in the Mill does not meet the minimum standard for safety. The lack of lighting is a contributing factor to the poor housekeeping that has been observed. The physical environment should reflect the importance placed on safety in the workplace.
- 8.4 Office Supply Indoor Substation:** The office complex is supplied from an electrical room located adjacent to the building. The electrical room contains a home built 4160/600 V substation. There is no enclosure on the equipment. All wiring is open. The installation is a fire and safety hazard. It is recommended that this equipment be immediately replaced with a modular switch gear package, or a set of standard overhead cans with overhead drops to the building. Further engineering is required to develop a cost effective solution.
- 8.5 Faro to Grum Line 5 kV Feeder:** The existing 5 kV teck cables on the secondary of the feeder's isolation transformer have collapsed and are pulling apart at the pot heads on the overhead structure. These cables should be replaced as soon as possible to prevent a failure and possible fire and downtime.
- 8.6 Faro Pit 4160/600 V Transformer :** The Faro pit transformer is supplied from an overhead structure by a rubber cable crossing the roadway. The cable is only protected by some rubber matting, over which the vehicles travel. Concern has been raised regarding the age of the transformer in regard to its reliability, the cost of operating the transformer since it is oversized, the safety of the road crossing and the safety in regard to its lack of compliance to current codes. It is recommended that this installation be corrected.
- 8.7 Faro to Grum 69 kV Pole Line:** A number the poles on the Grum 69 kV line are leaning. It is recommended that these poles be straightened.

9.0 Summary of All Recommendations:

- 9.1 5 kV Line Extensions (5 total) (Reference Sections 2.1 – 2.5):** All planned extensions should be bundled into one work package for completion by one contractor crew. The work will be more cost effective if tendered as a package as the bulk work will be more attractive at the remote site. Consideration should be given to line extension work to be undertaken in conjunction with recommendations 2, 3, 4 and 5.
- 9.2 MCC Room Consolidation (Reference Section 3.0):** In order to enhance safety and improve energy efficiency a work plan should be put in place to consolidate the Mill distribution system.
- 9.3 Equipment Cleaning, Calibration and Labelling (Reference Section 6.2):** In order to improve safety a work plan should be put into place to have all medium voltage equipment cleaned, calibrated, tested and labelled.
- 9.4 Faro Pit 5 kV Transformer (Reference Section 6.3):** Correct safety issues.
- 9.5 General Maintenance (Reference Section 6.4):** Perform maintenance tasks identified
- 9.6 Improve Mill Lighting: (Reference Section 8.3):** In order to improve worksite safety a work plan should be put into place to improve mill lighting.
- 9.7 Office Sub Station Replacement (Reference Section 8.4):** Replace substation to correct safety issue.
- 9.8 Faro to Grum Line 5 kV Feeder Repair (Reference Section 8.5):** Repair Teck cable feeder behind main substation. Maintenance issue.
- 9.9 Faro to Grum 69 kV Pole Repairs (Reference Section 8.7):** Repair leaning poles. Maintenance issue.

10.0 Cost Summary Table

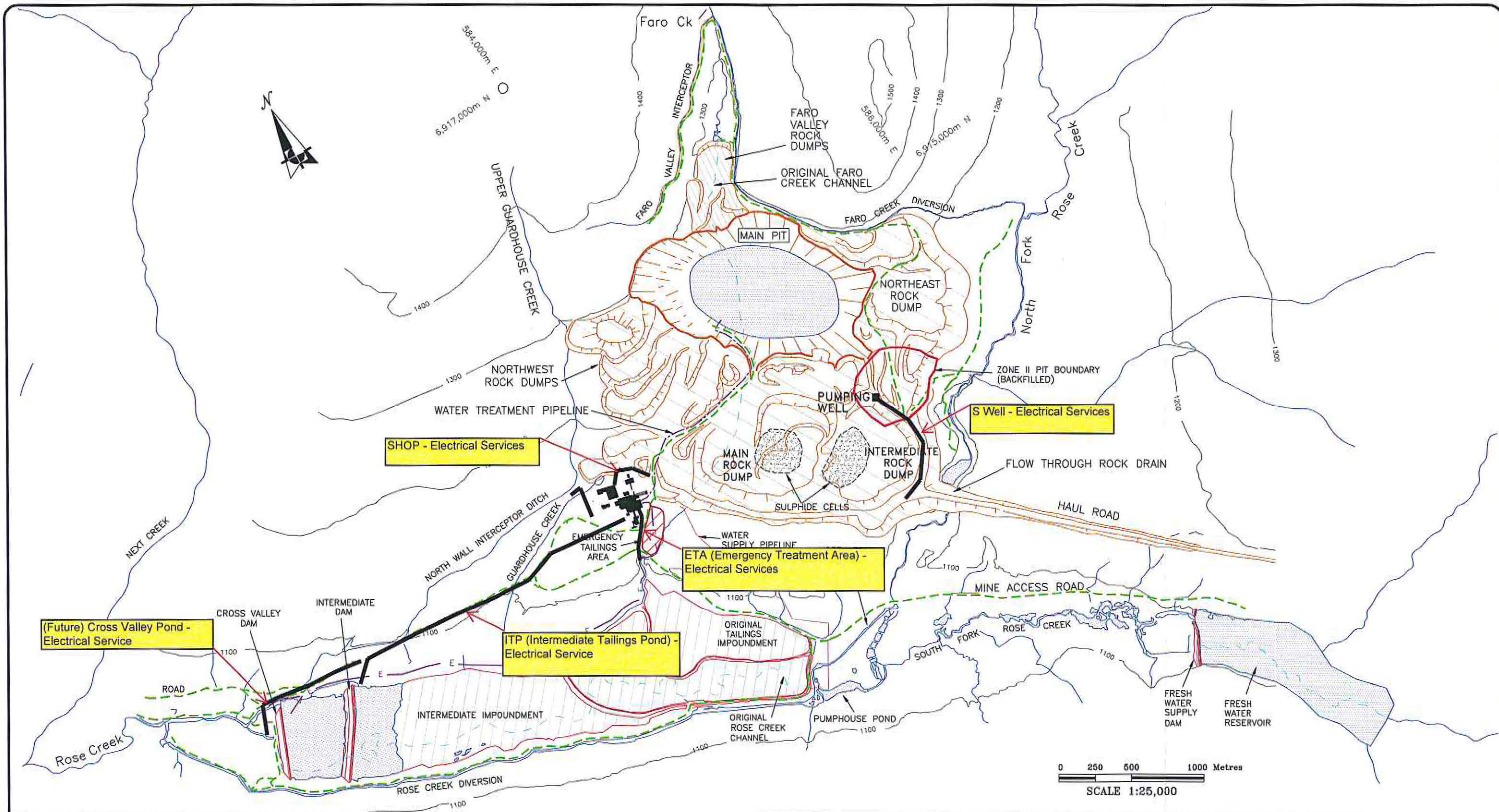
The following table summarises the recommendations and costs outlined in this report:

Item	Action	Cost	Immediate Work
1	Electrical Service to Intermediate Pond	\$180,000	\$130,000
2	Electrical Service to S-Well Pump Station	\$65,000	\$40,000
3	Electrical Service to ETA	\$40,000	\$40,000
4	Electrical Service to Grum V-15	\$70,000	\$60,000
5	Electrical Service to Shop	\$35,000	\$30,000
6	Consolidate MCC Rooms	\$150,000	
7	Medium Voltage Switchgear Maintenance and Arc Flash Labeling	\$200,000	
8	Faro Pit 5 kV transformer	\$35,000	
9	General Maintenance	\$25,000	\$25,000
10	Improve Mill Lighting	\$30,000	
11	Office Substation Replacement	\$35,000	
12	Faro to Grum 5 kV Line - feeder repair	\$15,000	
13	Faro to Grum 69 kV Line Pole Repair	\$10,000	
		\$890,000	\$325,000

-----end-----

APPENDIX - A

Power Line Routing – Figure 1.0
Power Line Routing – Figure 2.0



SOURCE OF FIGURE:

DRAWING NO. 4.1 "OVERVIEW OF FARO MINESITE"
DIAND WASTE MANAGEMENT PROGRAM BY GARTNER
LEE LIMITED
03/16/01 ADAPTED FROM ROBERTSON
GEOCONSULTANTS INC.

Notes:

Base Map supplied by the Orthoshop, January 1991
North American Datum 1927
Contour Interval 100 m
Universal Transverse Mercator Projection
Map is a composite of 9 basemaps,
it was redigitized to simplify planimetric features.

LEGEND:

- ROADS
- EXISTING DRAINAGE
- ORIGINAL DRAINAGE
- EFFLUENT PIPELINE
- PIPELINE

Dorward Engineering Services
3147-3rd Ave
Whitehorse, Y.T.
Y1A 1E8 - Canada
tel: (867) 668-6888
fax: (867) 633-4561
e: dorward@tee.org

APPENDIX A: **FIGURE 1.0**

DRAWING INFORMATION:	
REVIEWED BY:	ED
DRAWN BY:	CPW
DATE ISSUED:	APRIL, 2002
PROJECT NUMBER:	22-943
FILE NAME:	22943-D1-20r1.DWG
REVISION:	1

POWER LINE ROUTING

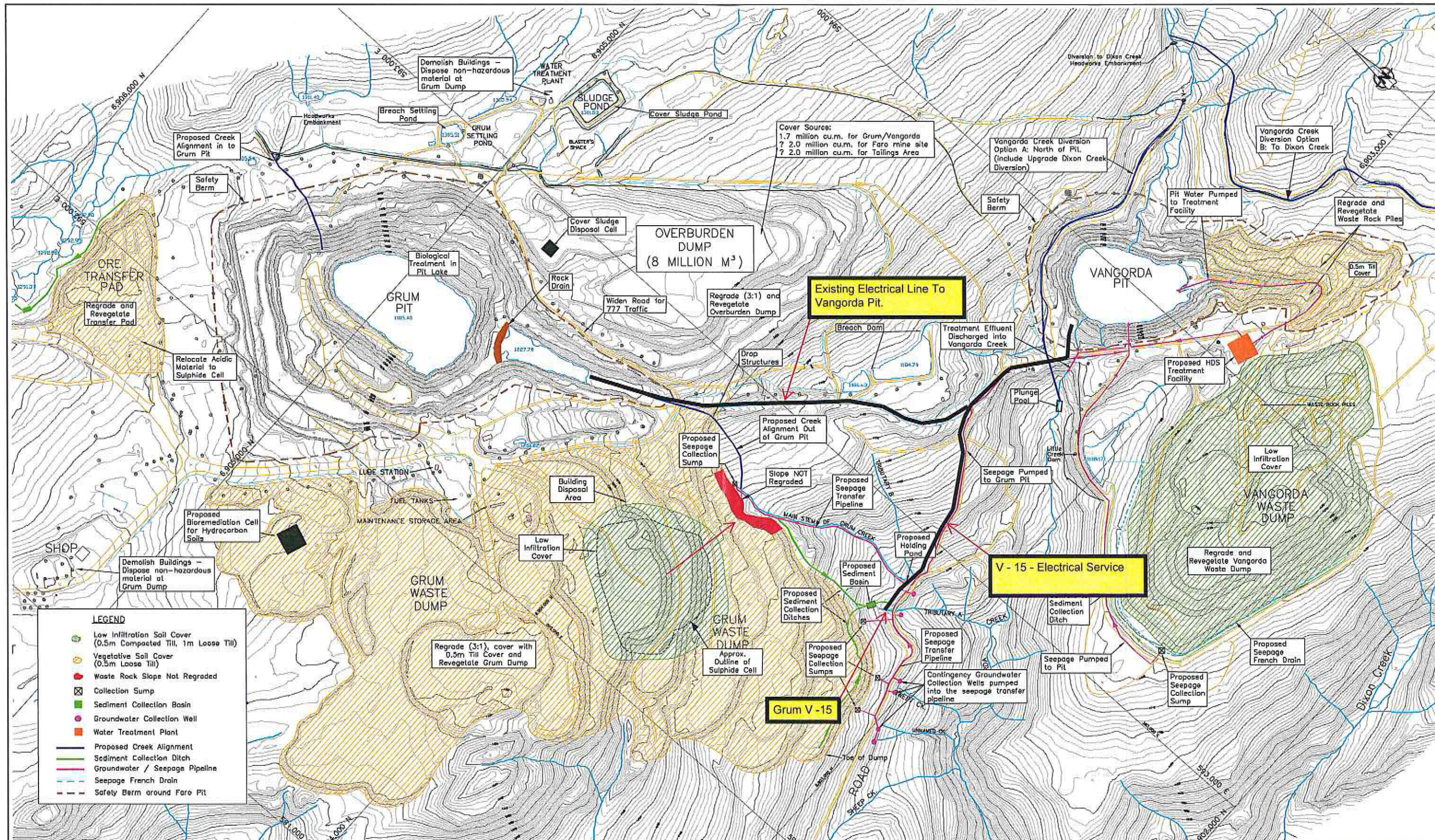
Gartner Lee Limited

Deloitte & Touche

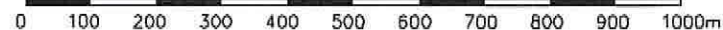
Figure No.
1.0

APPENDIX - B

Annual Cost Worksheet



Map Scale: 1:5000
 Contour Interval: 2m
 Date of Photography: 03/07/25
 Scale of Photography: 1:20000
 Survey control derived from existing 1:20000 photography
 Survey control based on: UTM Projection, NAD27
 Compiled by The DRTHOSHOP, Calgary, September 2003
 90 8856



Dorward Engineering Services
 3147-37 Ave
 Whitehorse, Y.T.
 Y1A 1E9 Canada
 Tel: (867) 669-2888
 Fax: (867) 633-4551
 e: dorward@eesee.org

SRK Consulting
 a geotechnical and
 environmental
 engineering
 & construction
 company

Deloitte & Touche

APPENDIX A: FIGURE 2.0			
POWER LINE ROUTEING			
PROJECT NO. 1CD003.65	DATE FEB. 2005	APPROVED	FIG. 2.0



Dorward Engineering Services Ltd.
3147-3rd Ave.
Whitehorse, Y.T.
Y1A 1E9 Canada

Prepared By: V. Wraich/M.Slama
Authorized By: R. Dorward
Date: December, 2009
Revision No. 3

FARO MINE ANNUAL COST WORKSHEET

AREA	EQUIP No.	MCC/ SUPPLY RM	FRAME	EQUIPMENT NAME	HP	% LOAD DEMAND	DRAW (KW)	HOURS/ DAY	DA YSI/ YR	KWH/ YR	COST/ YR
Faro Mill Treatment Plant											
Flotation	4225	64M6	445	K Bank Zinc Scav	100						
	4228	64M5	445	K Bank Zinc Scav	100						
	4227	64M4	445	K Bank Zinc Scav	100						
	4228	64M3	445	K Bank Zinc Rougher	100						
	4229	64M2	445	K Bank Zinc Rougher	100						
	4230	64M1	445	K Bank Zinc Rougher	100						
	4231	65M6	445	L Bank Zinc Scav	100						
	4232	65M5	445	L Bank Zinc Scav	100						
	4233	65M4	445	L Bank Zinc Scav	100						
	4234	65M3	445	L Bank Zinc Rougher	100						
	4235	65M2	445	L Bank Zinc Rougher	100						
	4236	65M1	445	L Bank Zinc Rougher	100						
	Lime Bay	1307	41M33	385	Lime Vaccum Pump	75					
4401		70M4	56C	Outside Lime Bin Hoist Motor	2						
4402		33M11	256	Lime Screw Feeder Northland	20						
3527		70M18	182T	Lime Screw Feeder	3						
4403		41M61	286	Lime Mixing Agitator	15						
3902		41M30	NO PLT	Lime Storage Tank Feed Pump	NO PLT						
3903		33M1	256T	Lime Dist. Feed Pump (West)	20						
3904		33M14	256T	Lime Dist. Feed Pump (East)	20						
4306		33M3	184	Lime Storage Tank Agitator (West)	5						
4307		33M4	184	Lime Storage Tank Agitator (East)	5						
6079		34M7		East Flyght Agitator							
75' Thickner #1 Tank	1174	33M19	184T	Rake Drive	5						
	1176	33M23	213	Rake Lift	1.5						
	3501	70F45 VFD	288T	Underflow Pump	30						
	3516	37M3	184T	U/F Tunnel Sump Pump	5						
90' Clarifier #2 Tank	1189	33M18	254	Rake Drive	5						
	1191	33M22	213	Rake Lift	1.5						
	3528	70M17	286T	Underflow Pump	30						
36' Thickner #3 Tank	1139	33M16	182	Rake Drive	3						
	1141	33M20	213	Rake Lift	1.5						
	3524	37M7	288T	Underflow Pump	30						
	3518	37M1	256	Sludge Clarifier Sump Pump	20						
Floculation System	4601	2001M1	184T	Floc Transfer Pump	5						
	4602	2001M2	184T	Floc Mixing Pump	5						
	4603	2001M3	M56C	Floc Agitator	0.75						
	4604	2001M4	143T	Floc Dist Pump #1	1						
	4605	2001M5	FM56C	Floc Dist Pump #2	0.5						
Misc.	4501	41M62	184T	Air Compressor	5						
	3528	70M19	256T	Gland Water Pump #1	20						
	3126	33M26	256T	Gland Water Pump #2	20						
		31M38	FLYGHY	Sludge Decanting Pump	5						
	3123	17M26	254T	Sludge Clarifier Overflow Sump	15						
		74M01	455T0592	Intermediate Agitator #1	150						
		74M02	455T0592	Intermediate Agitator #2	150						

ANNUAL COST WORKSHEET

AREA	EQUIP No.	MCC/SUPPLY RM	FRAME	EQUIPMENT NAME	HP	% LOAD DEMAND	DRAW (KW)	HOURS/ DAY	DAYS/ YR	KWH/ YR	COST/ YR
MIII Building Lighting Load											
	33-F25	Heating plant		Lighting Panel							
	33-F26	Heating plant		Lighting Panel							
	MCC 70	Heating plant		Lighting Panel							
	37-F16	Heating plant		Lighting Panel							
	MCC 41	Heating plant		Lighting Panel							
	MCC 41	Heating plant		Lighting Panel							
	MCC 41	Heating plant		Lighting Panel							
	37-F16	Heating plant		Lighting Panel							
	37-F17	Heating plant		Lighting Panel							
	37-F31	Heating plant		Lighting Panel							
	MCC 14	MCC Room 3		Lighting Panel							
	MCC 14	MCC Room 3		Lighting Panel							
	MCC 14	MCC Room 3		Lighting Panel							
	MCC 14	MCC Room 3		Lighting Panel							
	17-3029	MCC Room 3		Lighting Panel							
	32-1829	MCC Room 3		Lighting Panel							
	MCC 32	MCC Room 3		Lighting Panel							
	74-F15	MCC Room 3		Lighting Panel							
	31-F22	MCC Room 3		Lighting Panel							
	31-F25	MCC Room 3		Lighting Panel							
	68-F50	MCC Rom 3E		Lighting Panel							
	68-F51	MCC Rom 3E		Lighting Panel							
	68-F52	MCC Rom 3E		Lighting Panel							
	68-F53	MCC Rom 3E		Lighting Panel							
	68-F55	MCC Rom 3E		Lighting Panel							
	68-F54	MCC Rom 3E		Lighting Panel							
Vangorda Treatment Plant											
		Plant Building		Floculant Prep Unit (Allied Controls)	1						
		Plant Building		Lime Water Circulation Pump	5						
		Plant Building		Fresh Water Circulation Pump	5						
		Plant Building		Primary Reactor Agitator	10						
		Plant Building		Secondary Reactor Agitator	25						
		Plant Building		Flocculant Reactor Agitator	1.5						
		Plant Building		Plant Sump Pump	3						
		Plant Building		Lime Slurry Circulation Pump 1	5						
		Plant Building		Lime Slurry Circulation Pump 2	5						
		Plant Building		Plant Air Compressor	3						
		Plant Building		Rotary Air Lock Feeder	0.33						
		Plant Building		Blower	20						
		Plant Building		Bin Activator	1.5						
		Plant Building		Volumetric Screw Feeder	0.75						
		Plant Building		Lime Slacker	0.25						
		Plant Building		Lime Slacker	0.5						
		Plant Building		Lime Slurry Storage Tank Agitator	3						
		Plant Building		Dosing Pump	1						
Vangorda Pit											
				Pit Pump	650						
				Pit Pump	650						
S Well Pumps											
				Boost Pump	30						
				Hp Well Pump	1.5						
				Hp Well Pump	1.5						
				Heat Trace Cable							
Faro Pit											
				Pit Pump	250						
				Propane Shack							

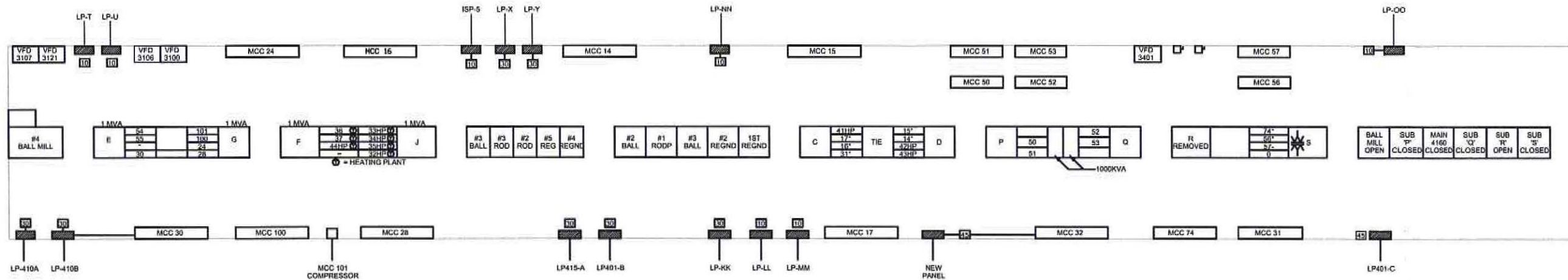
ANNUAL COST WORKSHEET

AREA	EQUIP No.	MCC/ SUPPLY RM	FRAME	EQUIPMENT NAME	HP	% LOAD DEMAND	DRAW (KW)	HOURS/ DAY	DAYS/ YR	KWH/ YR	COST/ YR
Emergency Treatment Area (ETA)				Pump Pump	30 5						
Administration Building				Panel							
Site Lighting											
Future Loads (Assumptions Only)				Water Well Intermediate Pond V15 pump	3 400 50						
				Total kWh/Year							
				Total Cost/Year							

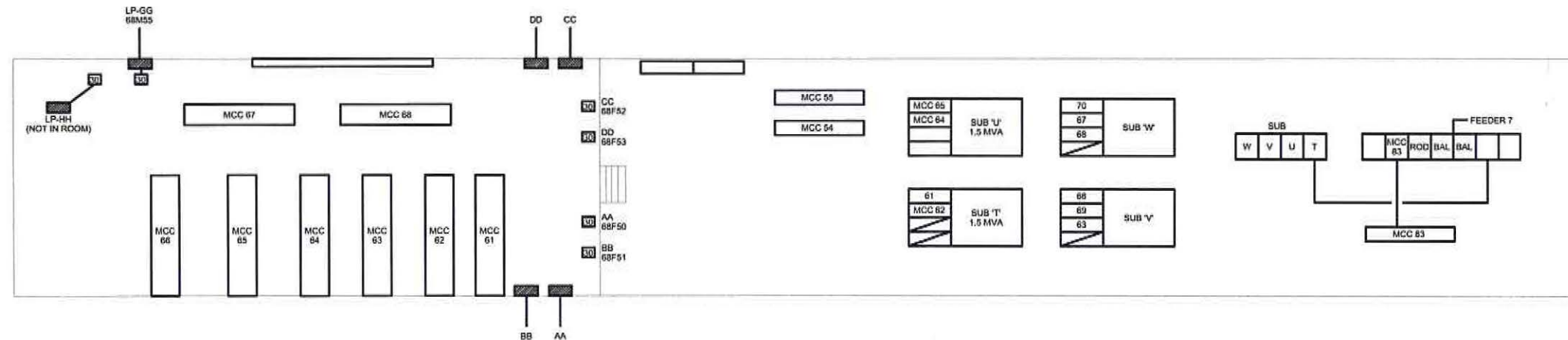
APPENDIX - C
Single Line Diagram

APPENDIX – D

MCC Rooms 3 and 3E
Heating Plant MCC Room



1
E1
MCC ROOM #3



2
E1
MCC ROOM #3E

NOTES:

REVISIONS:

NO.	DATE	BY	ISSUED FOR
1	09/09/09	RD	AS-BUILT
2	07/05/00	RD	REVISED

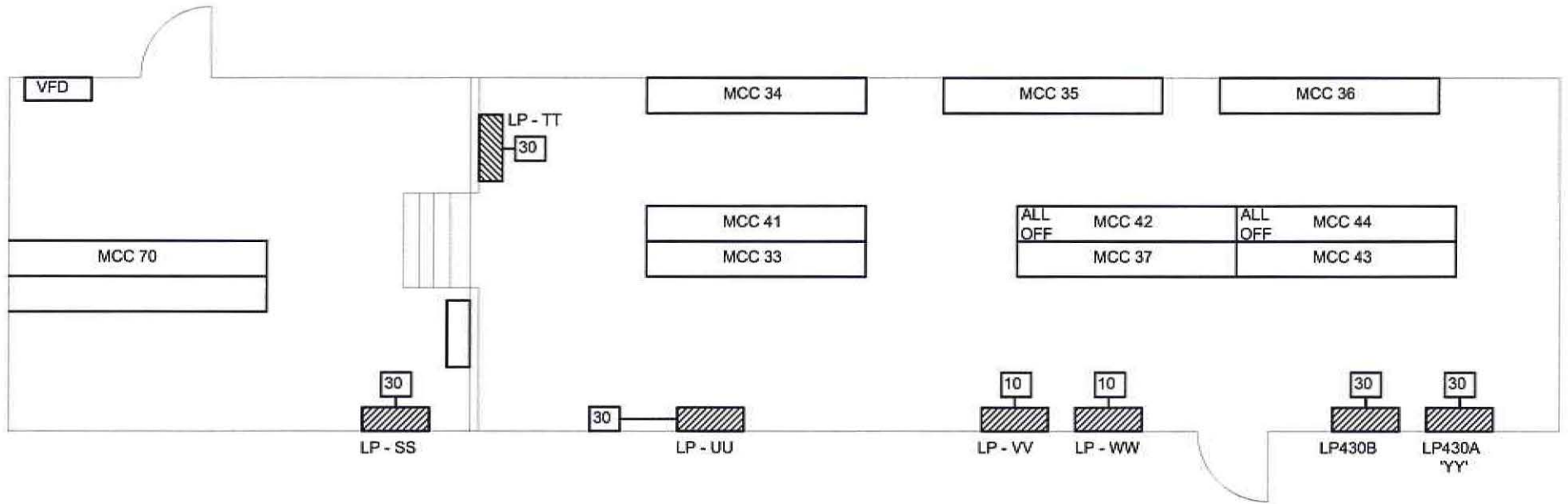
DORWARD ENGINEERING SERVICES LTD.
 CONSULTING ELECTRICAL ENGINEERS
 SUITE 402 - 209 STRICKLAND ST
 WHITEHORSE, TIA 2J9
 PHONE (867) 668-6888
 FAX (867) 633-4361
 E-MAIL: dorward@ieee.org

PROJECT:
FARO MINE CARE AND MAINTENANCE PROJECT

DRAWING TITLE:
**APPENDIX D:
 MCC ROOM 3 AND 3E**

SCALE: NTS
 DATE: SEPTEMBER 2009
 DESIGN: RD
 DRAWN: JAZZ
 CHECKED: RD
 APPROVED FOR CONSTRUCTION:

PROJECT NUMBER: 9069	SHEET: E1 OF 2
-------------------------	-------------------



NOTES:

1. AS-BUILT FROM SITE DATA COLLECTED SEPTEMBER 11, 2001

REVISIONS:				SCALE:	NTS
NO.	DATE MM/YY	BY	ISSUED FOR	DATE:	SEPTEMBER 2009
1	09/09/09	RD	AS-BUILT	DESIGN:	RD
2	07/05/09	RD	REVISED	DRAWN:	JAZZ
				CHECKED:	RD

DORWARD ENGINEERING SERVICES LTD.
 CONSULTING ELECTRICAL ENGINEERS
 SUITE 402 - 309 STRICKLAND ST
 WHITEHORSE, Y.A. 2-19
 PHONE: (867) 660-5888
 FAX: (867) 633-4561
 E-MAIL: dorward@ieee.org

PROJECT:
FARO MINE CARE AND MAINTENANCE PROJECT

DRAWING TITLE:
**APPENDIX D:
 HEATING PLANT MCC ROOM**

PROJECT NUMBER:	SHEET:
9069	E2 OF 2