



2195 – 2ND Ave

Whitehorse, YT Y1A 3T8

P: (867) 393-4882 ■ F: (867) 393-4883

June 18, 2014

EDI Job Number: 14-Y-0270

Assessment and Abandoned Mines
Yukon Government
Box 2703, K-419
Whitehorse, YT Y1A 2C6

Attention: Adrienne Turcotte, Project Officer

Re: Rose Creek Monitoring Program – May 13, 2014

Assessment and Abandoned Mines (AAM) retained EDI Environmental Dynamics Inc. (EDI) to conduct water quality sampling at the Faro Mine Site. The Rose Creek Monitoring Program has been ongoing since November 2013 in response to changing water quality conditions. Table 1, attached, summarizes the field trips completed for the 2014 fiscal year. The intent of this memo is to summarize field data obtained during the May 13, 2014 field trip.

The objective of this trip was to conduct surface water sampling at 10 monitoring sites, including QA/QC samples. Figure 1 provides the locations of all sampling sites. Table 2 summarizes field data collected at each sampling site. Representative photos of each site and the ALS laboratory analytical reports for all water chemistry samples submitted during this field trip are attached.

Weather conditions on May 13, 2014 were mild; the air temperature was near 15°C and skies were clear and calm. Nine of the 10 monitoring sites were sampled. As noted for the previous trip, the remaining site, R3, was still inaccessible; the access trail was too saturated for ATV use.

If you have any questions, please do not hesitate to contact me at (867) 393-4882 or through email at mkearns@edynamics.com.



Yours truly,

EDI Environmental Dynamics Inc.

Submitted via email

Meighan Kearns, B.Sc., R.P.Bio.
Aquatic Biologist

Attachments:

- Table 1. Summary of field trips conducted in the 2014 fiscal year, Rose Creek Monitoring Program.
- Table 2. Surface water sampling field data, Rose Creek Monitoring Program, May 13, 2014.
- Figure 1. Location of surface water sampling, Rose Creek Monitoring Program, May 13, 2014.
- Photos 1 – 9. Representative site photos.
- ALS Laboratory Analytical Reports



Table 1. Summary of field trips conducted in the 2014 fiscal year, Rose Creek Monitoring Program.

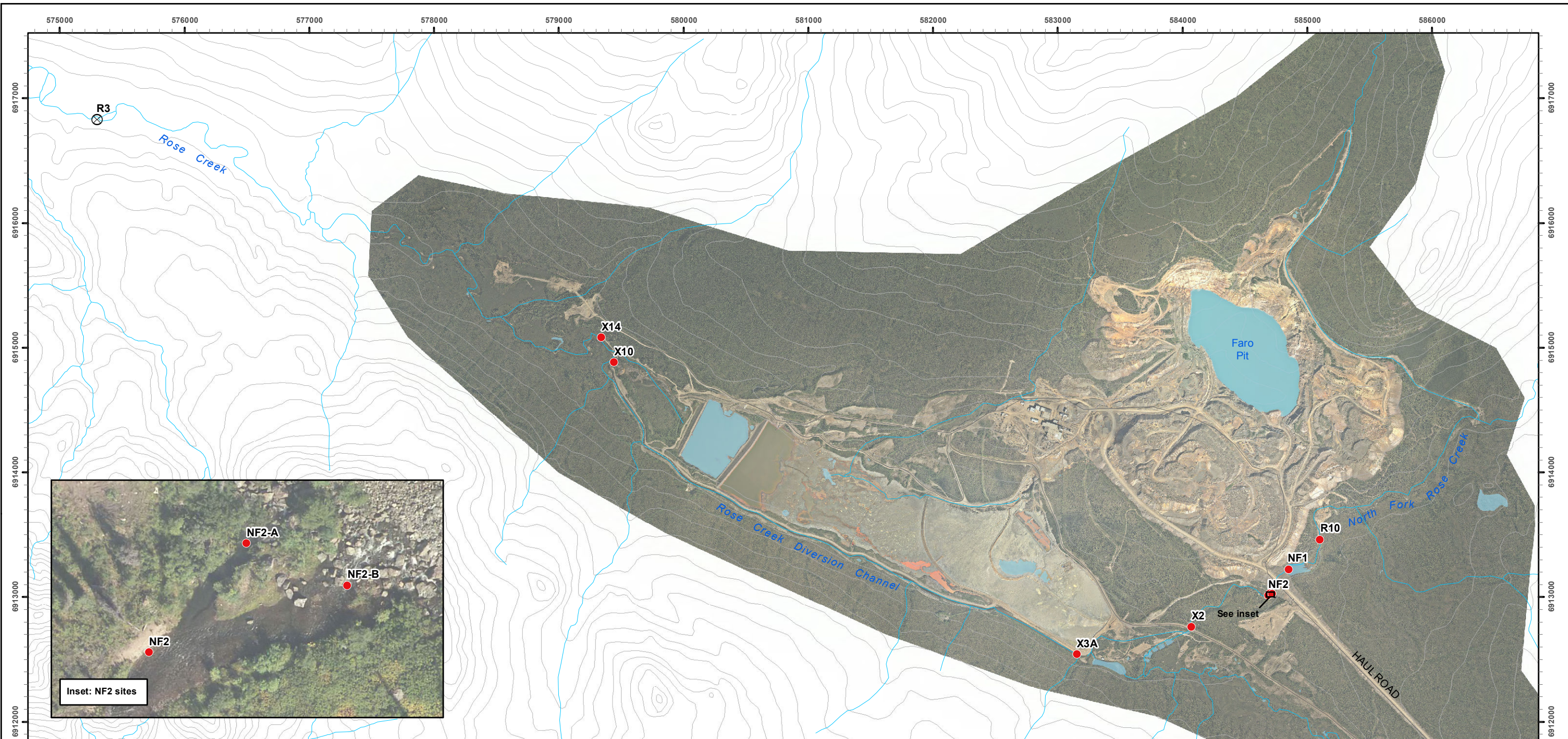
Field Date	General Tasks
April 01, 2014	<ul style="list-style-type: none">• Surface water sampling
April 08, 2014	<ul style="list-style-type: none">• Surface water sampling
April 15, 2014	<ul style="list-style-type: none">• Surface water sampling
April 22, 2014	<ul style="list-style-type: none">• Surface water sampling
April 29, 2014	<ul style="list-style-type: none">• Surface water sampling
May 06, 2014	<ul style="list-style-type: none">• Surface water sampling
May 13, 2014	<ul style="list-style-type: none">• Surface water sampling



Table 2. Surface water sampling field data, Rose Creek Monitoring Program, May 13, 2014.

Site Name	UTM Location		Sample		QA/ QC Rep. ID	In-situ Parameters			
	Easting	Northing	Date	Time		Temp (°C)	SPC (µS/cm)	pH	Turbidity (NTU)
R3	-	-	-	-	-	-	-	-	-
X14	0579342	6915080	13-May-2014	9:15	-	1.0	282.9	7.04	7.34
X10	0579451	6914870	13-May-2014	9:40	X10-r	1.1	161.1	7.51	8.94
X3A	0583155	6912536	13-May-2014	10:05	-	1.0	146.0	7.36	4.96
X2	0584069	6912778	13-May-2014	10:25	-	0.6	119.3	7.24	5.39
NF2-A	0584712	6913040	13-May-2014	10:45	-	0.4	113.0	7.22	6.04
NF2-B	0584728	6913029	13-May-2014	11:00	-	0.5	112.5	7.25	6.90
NF2	0584681	6913003	13-May-2014	11:15	-	0.4	126.0	7.21	6.83
NF1	0584893	6913282	13-May-2014	11:55	-	1.7	109.6	7.24	6.33
R10	0585103	6913487	13-May-2014	12:10	-	2.1	111.0	7.32	9.57

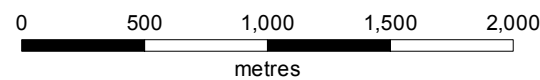
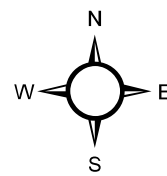
Where, UTM = Universal Transverse Mercator (NAD 83/ Zone 8);
 QA/QC Rep = Quality Assurance/ Quality Control Replicate;
 Temp = water temperature; and,
 SPC = specific conductance.



Location of surface water sampling, Rose Creek Monitoring Program, May 13, 2014

Legend

- Surface Water Sample Collected
- ⊗ Site Inaccessible
- Topographic Contour (30 m Interval)
- Road (Mine Access/Haul)



Map Scale = 1:30,000 (printed on 11 x 17)
 Map Projection: North American Datum 1983 UTM Zone 8N

Data sources

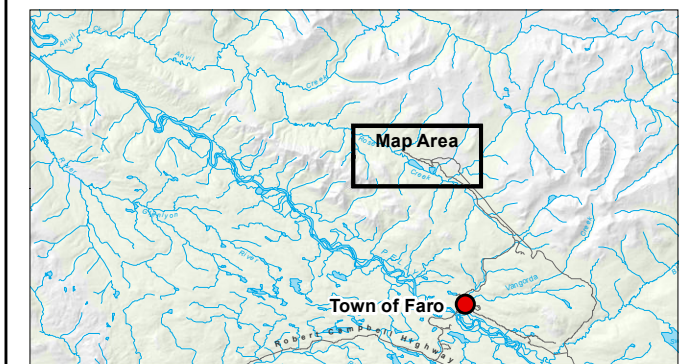
1:50,000 topographic spatial data provided by Geomatics - Yukon Government via online source (Corporate Spatial Warehouse) www.geomaticsyukon.ca.

National Road Network courtesy of Her Majesty the Queen in Right of Canada, Department of Natural Resources. All Rights Reserved.

Detailed topographic features of the Faro, Grum and Vangorda mine sites were provided by Yukon Government - Energy, Mines and Resources - Assessment and Abandoned Mines Branch (March 2012).

Project data displayed is site specific. Data collected by EDI Environmental Dynamics Inc. was obtained using Garmin GPS technology.

This document is not an official land survey and the spatial data presented is subject to change.



Map Prepared by
 EDI Environmental Dynamics Inc.

Drawn: LG	Checked: MK	FIGURE 1	Date: 29/04/2014
--------------	----------------	----------	------------------



Site Photos



Photo 1. Downstream view at surface water sampling site X14, May 13, 2014.



Photo 2. Downstream view at surface water sampling site X10, May 13, 2014.



Photo 3. Downstream view at surface water sampling site X3A, May 13, 2014.



Photo 4. Upstream view at surface water sampling site X2, May 13, 2014.



Photo 5. Downstream view at surface water sampling site NF2-A, May 13, 2014.



Photo 6. Overview from surface water sampling site NF2-B, May 13, 2014.



Photo 7. Upstream view at surface water sampling site NF2, May 13, 2014.



Photo 8. Overview at surface water sampling site NF1, May 13, 2014.



Photo 9. Upstream view at surface water sampling site R10, May 13, 2014.



ENVIRONMENTAL DYNAMICS INC.
ATTN: Meighan Kearns
2195 - 2nd Avenue
Whitehorse YT Y1A 3T8

Date Received: 14-MAY-14
Report Date: 27-MAY-14 16:09 (MT)
Version: FINAL

Client Phone: 867-393-4882

Certificate of Analysis

Lab Work Order #: L1455078
Project P.O. #: NOT SUBMITTED
Job Reference: 14-Y-270
C of C Numbers: 1, 2
Legal Site Desc:

Can Dang
Senior Account Manager

[This report shall not be reproduced except in full without the written authority of the Laboratory.]

ADDRESS: 8081 Lougheed Hwy, Suite 100, Burnaby, BC V5A 1W9 Canada | Phone: +1 604 253 4188 | Fax: +1 604 253 6700
ALS CANADA LTD Part of the ALS Group A Campbell Brothers Limited Company

ALS ENVIRONMENTAL ANALYTICAL REPORT

	Sample ID Description Sampled Date Sampled Time Client ID	L1455078-1 Grab 13-MAY-14 12:10 R10	L1455078-2 Grab 13-MAY-14 11:55 NF1	L1455078-3 Grab 14-MAY-14 10:15 TRAVEL BLANK	L1455078-4 Grab 13-MAY-14 12:00 FIELD BLANK	L1455078-5 Grab 13-MAY-14 09:15 X14
Grouping	Analyte					
WATER						
Physical Tests	Conductivity (uS/cm)	61.4	61.2	<2.0	383	152
	Hardness (as CaCO3) (mg/L)	29.7	29.1	<0.50	180	70.9
	pH (pH)	7.26	7.11	5.71	8.10	7.55
	Total Suspended Solids (mg/L)	26.2	10.6	<1.0	<1.0	10.0
	Total Dissolved Solids (mg/L)	43.9	44.9	<1.0	226	96.3
Anions and Nutrients	Alkalinity, Total (as CaCO3) (mg/L)	27.6	26.8	<2.0	153 ^{RRV}	44.6
	Ammonia, Total (as N) (mg/L)	<0.0050	<0.0050	0.0320 ^{RRV}	<0.0050	0.0160
	Chloride (Cl) (mg/L)	<0.50	<0.50	<0.50	3.00	<0.50
	Fluoride (F) (mg/L)	0.052	0.050	<0.020	0.168	0.059
	Nitrate (as N) (mg/L)	0.0152	0.0187	<0.0050	0.0462	0.0276
	Nitrite (as N) (mg/L)	<0.0010	<0.0010	<0.0010	<0.0010 ^{RRV}	<0.0010
	Phosphorus (P)-Total (mg/L)	0.0421	0.0341	<0.0020	0.0194 ^{RRV}	0.0289
	Sulfate (SO4) (mg/L)	3.11	3.16	<0.50	61.9	30.4
	Anion Sum (meq/L)	0.62	0.60	<0.10	4.45	1.53
	Cation Sum (meq/L)	0.68	0.67	<0.10	4.10	1.54
	Cation - Anion Balance (%)	4.4	4.8	0.0	-4.1	0.5
Organic / Inorganic Carbon	Dissolved Organic Carbon (mg/L)	9.91	11.9		<0.50	10.8
	Total Organic Carbon (mg/L)	11.2	12.9	<0.50	<0.50	10.4
Total Metals	Aluminum (Al)-Total (mg/L)	0.659	0.408	<0.0030	<0.0030	0.282
	Antimony (Sb)-Total (mg/L)	0.00028	0.00014	<0.00010	0.00014	0.00012
	Arsenic (As)-Total (mg/L)	0.00194	0.00103	<0.00010	0.00411	0.00082
	Barium (Ba)-Total (mg/L)	0.0380	0.0320	<0.000050	0.0337	0.0310
	Beryllium (Be)-Total (mg/L)	<0.00010	<0.00010	<0.00010	<0.00010	<0.00010
	Bismuth (Bi)-Total (mg/L)	<0.00050	<0.00050	<0.00050	<0.00050	<0.00050
	Boron (B)-Total (mg/L)	<0.010	<0.010	<0.010	0.015	<0.010
	Cadmium (Cd)-Total (mg/L)	0.000052	0.000060	<0.000010	<0.000010	0.000078
	Calcium (Ca)-Total (mg/L)	8.59	8.18	<0.020	31.7	19.3
	Chromium (Cr)-Total (mg/L)	0.00123	0.00075	<0.00010	0.00014	0.00065
	Cobalt (Co)-Total (mg/L)	0.00046	0.00031	<0.00010	<0.00010	0.00104
	Copper (Cu)-Total (mg/L)	0.00516	0.00268	<0.00050	0.0238	0.00235
	Iron (Fe)-Total (mg/L)	1.28	0.770	<0.010	<0.010	0.724
	Lead (Pb)-Total (mg/L)	0.0734	0.00919	<0.000050	<0.000050	0.00594
	Lithium (Li)-Total (mg/L)	0.00206	0.00137	<0.00050	0.00059	0.00137
	Magnesium (Mg)-Total (mg/L)	1.96	1.82	<0.0050	23.8	4.93
	Manganese (Mn)-Total (mg/L)	0.0382	0.0344	<0.000050	0.000116	0.524
	Molybdenum (Mo)-Total (mg/L)	0.000256	0.000239	<0.000050	0.00442	0.000252

* Please refer to the Reference Information section for an explanation of any qualifiers detected.

ALS ENVIRONMENTAL ANALYTICAL REPORT

	Sample ID Description Sampled Date Sampled Time Client ID	L1455078-6 Grab 13-MAY-14 09:35 X10	L1455078-7 Grab 13-MAY-14 09:40 X10-R	L1455078-8 Grab 13-MAY-14 10:05 X3A	L1455078-9 Grab 13-MAY-14 10:25 X2	L1455078-10 Grab 13-MAY-14 10:45 NF2-A
Grouping	Analyte					
WATER						
Physical Tests	Conductivity (uS/cm)	90.6	89.3	75.6	66.5	62.8
	Hardness (as CaCO3) (mg/L)	43.3	42.3	35.4	30.7	29.0
	pH (pH)	7.48	7.43	7.24	7.17	7.19
	Total Suspended Solids (mg/L)	9.6	10.2	13.2	14.8	11.0
	Total Dissolved Solids (mg/L)	59.3	57.3	51.7	47.1	45.0
Anions and Nutrients	Alkalinity, Total (as CaCO3) (mg/L)	39.0	38.9	32.3	28.1	28.0
	Ammonia, Total (as N) (mg/L)	0.0058	<0.0050	<0.0050	<0.0050	0.0057
	Chloride (Cl) (mg/L)	<0.50	<0.50	<0.50	<0.50	<0.50
	Fluoride (F) (mg/L)	0.062	0.058	0.062	0.054	0.051
	Nitrate (as N) (mg/L)	0.0267	0.0257	0.0266	0.0213	0.0204
	Nitrite (as N) (mg/L)	<0.0010	<0.0010	<0.0010	<0.0010	<0.0010
	Phosphorus (P)-Total (mg/L)	0.0234	0.0246	0.0272	0.0320	0.0285
	Sulfate (SO4) (mg/L)	6.07	6.06	5.42	4.71	3.28
	Anion Sum (meq/L)	0.91	0.91	0.76	0.66	0.63
	Cation Sum (meq/L)	0.95	0.93	0.79	0.70	0.66
	Cation - Anion Balance (%)	2.0	1.0	1.9	2.7	2.5
Organic / Inorganic Carbon	Dissolved Organic Carbon (mg/L)	11.7	10.4	10.4	11.8	11.8
	Total Organic Carbon (mg/L)	12.0	10.6	11.8	12.1	12.2
Total Metals	Aluminum (Al)-Total (mg/L)	0.322	0.291	0.378	0.430	0.392
	Antimony (Sb)-Total (mg/L)	0.00012	0.00011	0.00012	0.00012	0.00012
	Arsenic (As)-Total (mg/L)	0.00089	0.00082	0.00100	0.00107	0.00101
	Barium (Ba)-Total (mg/L)	0.0313	0.0309	0.0318	0.0311	0.0301
	Beryllium (Be)-Total (mg/L)	<0.00010	<0.00010	<0.00010	<0.00010	<0.00010
	Bismuth (Bi)-Total (mg/L)	<0.00050	<0.00050	<0.00050	<0.00050	<0.00050
	Boron (B)-Total (mg/L)	<0.010	<0.010	<0.010	<0.010	<0.010
	Cadmium (Cd)-Total (mg/L)	0.000083	0.000076	0.000095	0.000112	0.000064
	Calcium (Ca)-Total (mg/L)	11.8	11.7	10.0	9.36	8.63
	Chromium (Cr)-Total (mg/L)	0.00072	0.00063	0.00076	0.00083	0.00075
	Cobalt (Co)-Total (mg/L)	0.00052	0.00047	0.00062	0.00073	0.00039
	Copper (Cu)-Total (mg/L)	0.00447	0.00248	0.00258	0.00289	0.00260
	Iron (Fe)-Total (mg/L)	0.736	0.694	0.828	0.880	0.791
	Lead (Pb)-Total (mg/L)	0.00663	0.00630	0.00832	0.00956	0.00843
	Lithium (Li)-Total (mg/L)	0.00108	0.00084	0.00128	0.00159	0.00116
	Magnesium (Mg)-Total (mg/L)	3.20	3.19	2.33	2.10	1.87
	Manganese (Mn)-Total (mg/L)	0.0657	0.0464	0.0584	0.0618	0.0380
	Molybdenum (Mo)-Total (mg/L)	0.000245	0.000237	0.000228	0.000238	0.000225

* Please refer to the Reference Information section for an explanation of any qualifiers detected.

ALS ENVIRONMENTAL ANALYTICAL REPORT

	Sample ID Description Sampled Date Sampled Time Client ID	L1455078-11 Grab 13-MAY-14 11:00 NF2-B	L1455078-12 Grab 13-MAY-14 11:15 NF2		
Grouping	Analyte				
WATER					
Physical Tests	Conductivity (uS/cm)	63.8	72.7		
	Hardness (as CaCO3) (mg/L)	29.8	32.8		
	pH (pH)	7.21	7.19		
	Total Suspended Solids (mg/L)	15.2	12.8		
	Total Dissolved Solids (mg/L)	45.0	50.2		
Anions and Nutrients	Alkalinity, Total (as CaCO3) (mg/L)	27.7	27.9		
	Ammonia, Total (as N) (mg/L)	<0.0050	<0.0050		
	Chloride (Cl) (mg/L)	<0.50	<0.50		
	Fluoride (F) (mg/L)	0.062	0.059		
	Nitrate (as N) (mg/L)	0.0191	0.0218		
	Nitrite (as N) (mg/L)	<0.0010	<0.0010		
	Phosphorus (P)-Total (mg/L)	0.0322	0.0317		
	Sulfate (SO4) (mg/L)	3.18	6.99		
	Anion Sum (meq/L)	0.63	0.71		
	Cation Sum (meq/L)	0.68	0.76		
	Cation - Anion Balance (%)	4.2	3.3		
Organic / Inorganic Carbon	Dissolved Organic Carbon (mg/L)	12.0	11.9		
	Total Organic Carbon (mg/L)	12.1	12.1		
Total Metals	Aluminum (Al)-Total (mg/L)	0.435	0.425		
	Antimony (Sb)-Total (mg/L)	0.00012	0.00013		
	Arsenic (As)-Total (mg/L)	0.00103	0.00103		
	Barium (Ba)-Total (mg/L)	0.0315	0.0307		
	Beryllium (Be)-Total (mg/L)	<0.00010	<0.00010		
	Bismuth (Bi)-Total (mg/L)	<0.00050	<0.00050		
	Boron (B)-Total (mg/L)	<0.010	<0.010		
	Cadmium (Cd)-Total (mg/L)	0.000046	0.000234		
	Calcium (Ca)-Total (mg/L)	8.88	9.17		
	Chromium (Cr)-Total (mg/L)	0.00086	0.00083		
	Cobalt (Co)-Total (mg/L)	0.00035	0.00139		
	Copper (Cu)-Total (mg/L)	0.00297	0.00263		
	Iron (Fe)-Total (mg/L)	0.841	0.833		
	Lead (Pb)-Total (mg/L)	0.00872	0.00854		
	Lithium (Li)-Total (mg/L)	0.00159	0.00158		
	Magnesium (Mg)-Total (mg/L)	1.86	2.40		
	Manganese (Mn)-Total (mg/L)	0.0393	0.0927		
	Molybdenum (Mo)-Total (mg/L)	0.000231	0.000233		

* Please refer to the Reference Information section for an explanation of any qualifiers detected.

ALS ENVIRONMENTAL ANALYTICAL REPORT

		Sample ID	L1455078-1	L1455078-2	L1455078-3	L1455078-4	L1455078-5
		Description	Grab	Grab	Grab	Grab	Grab
		Sampled Date	13-MAY-14	13-MAY-14	14-MAY-14	13-MAY-14	13-MAY-14
		Sampled Time	12:10	11:55	10:15	12:00	09:15
		Client ID	R10	NF1	TRAVEL BLANK	FIELD BLANK	X14
Grouping	Analyte						
WATER							
Total Metals	Nickel (Ni)-Total (mg/L)		0.00190	0.00155	<0.00050	<0.00050	0.00246
	Phosphorus (P)-Total (mg/L)		<0.30	<0.30	<0.30	<0.30	<0.30
	Potassium (K)-Total (mg/L)		1.16	1.10	<0.050	2.13	1.15
	Selenium (Se)-Total (mg/L)		0.00013	0.00012	<0.00010	0.00026	0.00016
	Silicon (Si)-Total (mg/L)		3.54	2.94	<0.050	6.32	2.88
	Silver (Ag)-Total (mg/L)		0.000187	0.000037	<0.000010	0.00975	0.000021
	Sodium (Na)-Total (mg/L)		0.848	0.796	<0.050	10.4	1.33
	Strontium (Sr)-Total (mg/L)		0.0440	0.0407	<0.00020	0.272	0.0745
	Thallium (Tl)-Total (mg/L)		0.000063	0.000025	<0.000010	<0.000010	0.000014
	Tin (Sn)-Total (mg/L)		<0.00010	<0.00010	<0.00010	<0.00010	<0.00010
	Titanium (Ti)-Total (mg/L)		0.024	0.012	<0.010	<0.010	<0.010
	Uranium (U)-Total (mg/L)		0.000436	0.000377	<0.000010	0.00319	0.000610
	Vanadium (V)-Total (mg/L)		0.0018	0.0011	<0.0010	0.0015	<0.0010
	Zinc (Zn)-Total (mg/L)		0.0120	0.0157	<0.0030	0.0062	0.0608
	Zirconium (Zr)-Total (mg/L)		<0.00080	<0.00080	<0.00080	<0.00080	<0.00080
Dissolved Metals	Dissolved Metals Filtration Location		FIELD	FIELD		FIELD	FIELD
	Aluminum (Al)-Dissolved (mg/L)		0.0866	0.0852		0.0023	0.0599
	Antimony (Sb)-Dissolved (mg/L)		<0.00010	<0.00010		0.00014	<0.00010
	Arsenic (As)-Dissolved (mg/L)		0.00055	0.00060		0.00420	0.00046
	Barium (Ba)-Dissolved (mg/L)		0.0259	0.0262		0.0339	0.0280
	Beryllium (Be)-Dissolved (mg/L)		<0.00010	<0.00010		<0.00010	<0.00010
	Bismuth (Bi)-Dissolved (mg/L)		<0.00050	<0.00050		<0.00050	<0.00050
	Boron (B)-Dissolved (mg/L)		<0.010	<0.010		0.015	<0.010
	Cadmium (Cd)-Dissolved (mg/L)		0.000028	0.000036		<0.000010	0.000056
	Calcium (Ca)-Dissolved (mg/L)		8.94	8.71		32.0	20.3
	Chromium (Cr)-Dissolved (mg/L)		0.00014	0.00014		0.00012	0.00012
	Cobalt (Co)-Dissolved (mg/L)		<0.00010	0.00011		<0.00010	0.00077
	Copper (Cu)-Dissolved (mg/L)		0.00182	0.00173		0.0237	0.00168
	Iron (Fe)-Dissolved (mg/L)		0.182	0.213		<0.010	0.210
	Lead (Pb)-Dissolved (mg/L)		0.00585	0.00253		0.000054	0.00121
	Lithium (Li)-Dissolved (mg/L)		0.00102	0.00113		0.00063	0.00113
	Magnesium (Mg)-Dissolved (mg/L)		1.79	1.78		24.3	4.89
	Manganese (Mn)-Dissolved (mg/L)		0.0125	0.0142		0.000134	0.527
	Molybdenum (Mo)-Dissolved (mg/L)		0.000191	0.000194		0.00449	0.000231
	Nickel (Ni)-Dissolved (mg/L)		0.00082	0.00085		<0.00050	0.00185
	Phosphorus (P)-Dissolved (mg/L)		<0.30	<0.30		<0.30	<0.30
	Potassium (K)-Dissolved (mg/L)		1.06	1.08		2.15	1.14

* Please refer to the Reference Information section for an explanation of any qualifiers detected.

ALS ENVIRONMENTAL ANALYTICAL REPORT

		Sample ID	L1455078-6	L1455078-7	L1455078-8	L1455078-9	L1455078-10
		Description	Grab	Grab	Grab	Grab	Grab
		Sampled Date	13-MAY-14	13-MAY-14	13-MAY-14	13-MAY-14	13-MAY-14
		Sampled Time	09:35	09:40	10:05	10:25	10:45
		Client ID	X10	X10-R	X3A	X2	NF2-A
Grouping	Analyte						
WATER							
Total Metals	Nickel (Ni)-Total (mg/L)		0.00206	0.00183	0.00195	0.00229	0.00165
	Phosphorus (P)-Total (mg/L)		<0.30	<0.30	<0.30	<0.30	<0.30
	Potassium (K)-Total (mg/L)		1.09	1.07	1.08	1.09	1.08
	Selenium (Se)-Total (mg/L)		0.00014	0.00013	0.00014	0.00013	0.00012
	Silicon (Si)-Total (mg/L)		2.84	2.78	3.13	3.07	2.95
	Silver (Ag)-Total (mg/L)		0.000025	0.000021	0.000026	0.000029	0.000028
	Sodium (Na)-Total (mg/L)		0.857	0.864	0.874	0.845	0.832
	Strontium (Sr)-Total (mg/L)		0.0560	0.0538	0.0487	0.0435	0.0406
	Thallium (Tl)-Total (mg/L)		0.000016	0.000014	0.000016	0.000018	0.000016
	Tin (Sn)-Total (mg/L)		<0.00010	<0.00010	<0.00010	<0.00010	<0.00010
	Titanium (Ti)-Total (mg/L)		0.011	<0.010	0.012	0.015	0.011
	Uranium (U)-Total (mg/L)		0.000514	0.000508	0.000465	0.000391	0.000386
	Vanadium (V)-Total (mg/L)		<0.0010	<0.0010	<0.0010	0.0011	0.0010
	Zinc (Zn)-Total (mg/L)		0.0685	0.0641	0.0811	0.100	0.0323
	Zirconium (Zr)-Total (mg/L)		<0.00080	<0.00080	<0.00080	<0.00080	<0.00080
Dissolved Metals	Dissolved Metals Filtration Location		FIELD	FIELD	FIELD	FIELD	FIELD
	Aluminum (Al)-Dissolved (mg/L)		0.0546	0.0569	0.0679	0.0816	0.0821
	Antimony (Sb)-Dissolved (mg/L)		<0.00010	<0.00010	<0.00010	<0.00010	<0.00010
	Arsenic (As)-Dissolved (mg/L)		0.00047	0.00046	0.00051	0.00055	0.00054
	Barium (Ba)-Dissolved (mg/L)		0.0268	0.0268	0.0264	0.0240	0.0238
	Beryllium (Be)-Dissolved (mg/L)		<0.00010	<0.00010	<0.00010	<0.00010	<0.00010
	Bismuth (Bi)-Dissolved (mg/L)		<0.00050	<0.00050	<0.00050	<0.00050	<0.00050
	Boron (B)-Dissolved (mg/L)		<0.010	<0.010	<0.010	<0.010	<0.010
	Cadmium (Cd)-Dissolved (mg/L)		0.000052	0.000056	0.000064	0.000089	0.000035
	Calcium (Ca)-Dissolved (mg/L)		12.2	11.8	10.3	8.95	8.67
	Chromium (Cr)-Dissolved (mg/L)		<0.00010	0.00011	0.00012	0.00012	0.00011
	Cobalt (Co)-Dissolved (mg/L)		0.00022	0.00022	0.00030	0.00040	<0.00010
	Copper (Cu)-Dissolved (mg/L)		0.00172	0.00166	0.00168	0.00186	0.00180
	Iron (Fe)-Dissolved (mg/L)		0.180	0.178	0.197	0.204	0.185
	Lead (Pb)-Dissolved (mg/L)		0.00128	0.00127	0.00178	0.00267	0.00226
	Lithium (Li)-Dissolved (mg/L)		0.00088	0.00089	0.00099	0.00099	0.00099
	Magnesium (Mg)-Dissolved (mg/L)		3.09	3.13	2.33	2.02	1.80
	Manganese (Mn)-Dissolved (mg/L)		0.0221	0.0216	0.0269	0.0283	0.00824
	Molybdenum (Mo)-Dissolved (mg/L)		0.000223	0.000214	0.000198	0.000196	0.000192
	Nickel (Ni)-Dissolved (mg/L)		0.00131	0.00123	0.00124	0.00140	0.00095
	Phosphorus (P)-Dissolved (mg/L)		<0.30	<0.30	<0.30	<0.30	<0.30
	Potassium (K)-Dissolved (mg/L)		1.06	1.05	1.06	1.05	1.05

* Please refer to the Reference Information section for an explanation of any qualifiers detected.

ALS ENVIRONMENTAL ANALYTICAL REPORT

	Sample ID Description Sampled Date Sampled Time Client ID	L1455078-11 Grab 13-MAY-14 11:00 NF2-B	L1455078-12 Grab 13-MAY-14 11:15 NF2		
Grouping	Analyte				
WATER					
Total Metals	Nickel (Ni)-Total (mg/L)	0.00172	0.00317		
	Phosphorus (P)-Total (mg/L)	<0.30	<0.30		
	Potassium (K)-Total (mg/L)	1.10	1.11		
	Selenium (Se)-Total (mg/L)	0.00012	0.00012		
	Silicon (Si)-Total (mg/L)	3.06	3.10		
	Silver (Ag)-Total (mg/L)	0.000026	0.000026		
	Sodium (Na)-Total (mg/L)	0.818	0.884		
	Strontium (Sr)-Total (mg/L)	0.0422	0.0431		
	Thallium (Tl)-Total (mg/L)	0.000016	0.000016		
	Tin (Sn)-Total (mg/L)	<0.00010	<0.00010		
	Titanium (Ti)-Total (mg/L)	0.014	0.013		
	Uranium (U)-Total (mg/L)	0.000380	0.000393		
	Vanadium (V)-Total (mg/L)	0.0011	0.0011		
	Zinc (Zn)-Total (mg/L)	0.0121	0.259		
	Zirconium (Zr)-Total (mg/L)	<0.00080	<0.00080		
Dissolved Metals	Dissolved Metals Filtration Location	FIELD	FIELD		
	Aluminum (Al)-Dissolved (mg/L)	0.0822	0.0844		
	Antimony (Sb)-Dissolved (mg/L)	<0.00010	<0.00010		
	Arsenic (As)-Dissolved (mg/L)	0.00055	0.00054		
	Barium (Ba)-Dissolved (mg/L)	0.0241	0.0246		
	Beryllium (Be)-Dissolved (mg/L)	<0.00010	<0.00010		
	Bismuth (Bi)-Dissolved (mg/L)	<0.00050	<0.00050		
	Boron (B)-Dissolved (mg/L)	<0.010	<0.010		
	Cadmium (Cd)-Dissolved (mg/L)	0.000025	0.000218		
	Calcium (Ca)-Dissolved (mg/L)	8.98	9.22		
	Chromium (Cr)-Dissolved (mg/L)	0.00011	0.00012		
	Cobalt (Co)-Dissolved (mg/L)	<0.00010	0.00122		
	Copper (Cu)-Dissolved (mg/L)	0.00188	0.00184		
	Iron (Fe)-Dissolved (mg/L)	0.187	0.224		
	Lead (Pb)-Dissolved (mg/L)	0.00229	0.00237		
	Lithium (Li)-Dissolved (mg/L)	0.00105	0.00124		
	Magnesium (Mg)-Dissolved (mg/L)	1.80	2.38		
	Manganese (Mn)-Dissolved (mg/L)	0.00657	0.0706		
	Molybdenum (Mo)-Dissolved (mg/L)	0.000195	0.000201		
	Nickel (Ni)-Dissolved (mg/L)	0.00091	0.00254		
	Phosphorus (P)-Dissolved (mg/L)	<0.30	<0.30		
	Potassium (K)-Dissolved (mg/L)	1.07	1.07		

* Please refer to the Reference Information section for an explanation of any qualifiers detected.

ALS ENVIRONMENTAL ANALYTICAL REPORT

		Sample ID	L1455078-1	L1455078-2	L1455078-3	L1455078-4	L1455078-5
		Description	Grab	Grab	Grab	Grab	Grab
		Sampled Date	13-MAY-14	13-MAY-14	14-MAY-14	13-MAY-14	13-MAY-14
		Sampled Time	12:10	11:55	10:15	12:00	09:15
		Client ID	R10	NF1	TRAVEL BLANK	FIELD BLANK	X14
Grouping	Analyte						
WATER							
Dissolved Metals	Selenium (Se)-Dissolved (mg/L)	0.00010	<0.00010			0.00026	0.00013
	Silicon (Si)-Dissolved (mg/L)	2.69	2.51			6.30	2.63
	Silver (Ag)-Dissolved (mg/L)	0.000022	<0.000010			0.00978	<0.000010
	Sodium (Na)-Dissolved (mg/L)	0.843	0.802			10.3	1.34
	Strontium (Sr)-Dissolved (mg/L)	0.0420	0.0399			0.275	0.0742
	Thallium (Tl)-Dissolved (mg/L)	<0.000010	0.000010			<0.000010	<0.000010
	Tin (Sn)-Dissolved (mg/L)	<0.00010	<0.00010			<0.00010	<0.00010
	Titanium (Ti)-Dissolved (mg/L)	<0.010	<0.010			<0.010	<0.010
	Uranium (U)-Dissolved (mg/L)	0.000355	0.000340			0.00330	0.000595
	Vanadium (V)-Dissolved (mg/L)	<0.0010	<0.0010			0.0015	<0.0010
	Zinc (Zn)-Dissolved (mg/L)	0.0068	0.0124			0.0061	0.0556
	Zirconium (Zr)-Dissolved (mg/L)	<0.00080	<0.00080			<0.00080	<0.00080

* Please refer to the Reference Information section for an explanation of any qualifiers detected.

ALS ENVIRONMENTAL ANALYTICAL REPORT

	Sample ID Description Sampled Date Sampled Time Client ID	L1455078-6 Grab 13-MAY-14 09:35 X10	L1455078-7 Grab 13-MAY-14 09:40 X10-R	L1455078-8 Grab 13-MAY-14 10:05 X3A	L1455078-9 Grab 13-MAY-14 10:25 X2	L1455078-10 Grab 13-MAY-14 10:45 NF2-A
Grouping	Analyte					
WATER						
Dissolved Metals	Selenium (Se)-Dissolved (mg/L)	0.00011	0.00012	0.00010	0.00011	<0.00010
	Silicon (Si)-Dissolved (mg/L)	2.51	2.50	2.61	2.60	2.60
	Silver (Ag)-Dissolved (mg/L)	<0.000010	<0.000010	<0.000010	<0.000010	<0.000010
	Sodium (Na)-Dissolved (mg/L)	0.849	0.849	0.876	0.845	0.840
	Strontium (Sr)-Dissolved (mg/L)	0.0552	0.0573	0.0503	0.0415	0.0402
	Thallium (Tl)-Dissolved (mg/L)	<0.000010	<0.000010	<0.000010	<0.000010	<0.000010
	Tin (Sn)-Dissolved (mg/L)	<0.00010	<0.00010	<0.00010	<0.00010	<0.00010
	Titanium (Ti)-Dissolved (mg/L)	<0.010	<0.010	<0.010	<0.010	<0.010
	Uranium (U)-Dissolved (mg/L)	0.000487	0.000479	0.000436	0.000350	0.000339
	Vanadium (V)-Dissolved (mg/L)	<0.0010	<0.0010	<0.0010	<0.0010	<0.0010
	Zinc (Zn)-Dissolved (mg/L)	0.0572	0.0569	0.0724	0.0933	0.0219
	Zirconium (Zr)-Dissolved (mg/L)	<0.00080	<0.00080	<0.00080	<0.00080	<0.00080

* Please refer to the Reference Information section for an explanation of any qualifiers detected.

ALS ENVIRONMENTAL ANALYTICAL REPORT

	Sample ID	L1455078-11	L1455078-12		
	Description	Grab	Grab		
	Sampled Date	13-MAY-14	13-MAY-14		
	Sampled Time	11:00	11:15		
	Client ID	NF2-B	NF2		
Grouping	Analyte				
WATER					
Dissolved Metals	Selenium (Se)-Dissolved (mg/L)	0.00011	0.00010		
	Silicon (Si)-Dissolved (mg/L)	2.60	2.61		
	Silver (Ag)-Dissolved (mg/L)	<0.000010	<0.000010		
	Sodium (Na)-Dissolved (mg/L)	0.833	0.895		
	Strontium (Sr)-Dissolved (mg/L)	0.0402	0.0413		
	Thallium (Tl)-Dissolved (mg/L)	<0.000010	<0.000010		
	Tin (Sn)-Dissolved (mg/L)	<0.00010	<0.00010		
	Titanium (Ti)-Dissolved (mg/L)	<0.010	<0.010		
	Uranium (U)-Dissolved (mg/L)	0.000332	0.000356		
	Vanadium (V)-Dissolved (mg/L)	<0.0010	<0.0010		
	Zinc (Zn)-Dissolved (mg/L)	0.0080	0.293		
	Zirconium (Zr)-Dissolved (mg/L)	<0.00080	<0.00080		

* Please refer to the Reference Information section for an explanation of any qualifiers detected.

Reference Information

QC Samples with Qualifiers & Comments:

QC Type Description	Parameter	Qualifier	Applies to Sample Number(s)
Matrix Spike	Calcium (Ca)-Dissolved	MS-B	L1455078-1, -10, -11, -12, -2, -4, -5, -6, -7, -8, -9
Matrix Spike	Manganese (Mn)-Dissolved	MS-B	L1455078-1, -10, -11, -12, -2, -4, -5, -6, -7, -8, -9
Matrix Spike	Strontium (Sr)-Dissolved	MS-B	L1455078-1, -10, -11, -12, -2, -4, -5, -6, -7, -8, -9
Matrix Spike	Antimony (Sb)-Dissolved	MS-B	L1455078-1, -10, -11, -12, -2, -4, -5, -6, -7, -8, -9
Matrix Spike	Arsenic (As)-Dissolved	MS-B	L1455078-1, -10, -11, -12, -2, -4, -5, -6, -7, -8, -9
Matrix Spike	Calcium (Ca)-Dissolved	MS-B	L1455078-1, -10, -11, -12, -2, -4, -5, -6, -7, -8, -9
Matrix Spike	Magnesium (Mg)-Dissolved	MS-B	L1455078-1, -10, -11, -12, -2, -4, -5, -6, -7, -8, -9
Matrix Spike	Manganese (Mn)-Dissolved	MS-B	L1455078-1, -10, -11, -12, -2, -4, -5, -6, -7, -8, -9
Matrix Spike	Strontium (Sr)-Dissolved	MS-B	L1455078-1, -10, -11, -12, -2, -4, -5, -6, -7, -8, -9
Matrix Spike	Barium (Ba)-Dissolved	MS-B	L1455078-1, -10, -11, -12, -2, -4, -5, -6, -7, -8, -9
Matrix Spike	Boron (B)-Dissolved	MS-B	L1455078-1, -10, -11, -12, -2, -4, -5, -6, -7, -8, -9
Matrix Spike	Calcium (Ca)-Dissolved	MS-B	L1455078-1, -10, -11, -12, -2, -4, -5, -6, -7, -8, -9
Matrix Spike	Magnesium (Mg)-Dissolved	MS-B	L1455078-1, -10, -11, -12, -2, -4, -5, -6, -7, -8, -9
Matrix Spike	Manganese (Mn)-Dissolved	MS-B	L1455078-1, -10, -11, -12, -2, -4, -5, -6, -7, -8, -9
Matrix Spike	Molybdenum (Mo)-Dissolved	MS-B	L1455078-1, -10, -11, -12, -2, -4, -5, -6, -7, -8, -9
Matrix Spike	Sodium (Na)-Dissolved	MS-B	L1455078-1, -10, -11, -12, -2, -4, -5, -6, -7, -8, -9
Matrix Spike	Strontium (Sr)-Dissolved	MS-B	L1455078-1, -10, -11, -12, -2, -4, -5, -6, -7, -8, -9
Matrix Spike	Uranium (U)-Dissolved	MS-B	L1455078-1, -10, -11, -12, -2, -4, -5, -6, -7, -8, -9
Matrix Spike	Barium (Ba)-Dissolved	MS-B	L1455078-1, -10, -11, -12, -2, -4, -5, -6, -7, -8, -9
Matrix Spike	Calcium (Ca)-Dissolved	MS-B	L1455078-1, -10, -11, -12, -2, -4, -5, -6, -7, -8, -9
Matrix Spike	Magnesium (Mg)-Dissolved	MS-B	L1455078-1, -10, -11, -12, -2, -4, -5, -6, -7, -8, -9
Matrix Spike	Sodium (Na)-Dissolved	MS-B	L1455078-1, -10, -11, -12, -2, -4, -5, -6, -7, -8, -9
Matrix Spike	Strontium (Sr)-Dissolved	MS-B	L1455078-1, -10, -11, -12, -2, -4, -5, -6, -7, -8, -9
Matrix Spike	Nitrate (as N)	MS-B	L1455078-1, -10, -11, -12, -2, -3, -4, -5, -6, -7, -8, -9
Matrix Spike	Total Organic Carbon	MS-B	L1455078-1, -2, -4, -5, -7, -8
Matrix Spike	Barium (Ba)-Dissolved	MS-B	L1455078-1, -10, -11, -12, -2, -4, -5, -6, -7, -8, -9
Matrix Spike	Calcium (Ca)-Dissolved	MS-B	L1455078-1, -10, -11, -12, -2, -4, -5, -6, -7, -8, -9
Matrix Spike	Magnesium (Mg)-Dissolved	MS-B	L1455078-1, -10, -11, -12, -2, -4, -5, -6, -7, -8, -9
Matrix Spike	Sodium (Na)-Dissolved	MS-B	L1455078-1, -10, -11, -12, -2, -4, -5, -6, -7, -8, -9
Matrix Spike	Strontium (Sr)-Dissolved	MS-B	L1455078-1, -10, -11, -12, -2, -4, -5, -6, -7, -8, -9
Matrix Spike	Barium (Ba)-Dissolved	MS-B	L1455078-1, -10, -11, -12, -2, -4, -5, -6, -7, -8, -9
Matrix Spike	Calcium (Ca)-Dissolved	MS-B	L1455078-1, -10, -11, -12, -2, -4, -5, -6, -7, -8, -9
Matrix Spike	Magnesium (Mg)-Dissolved	MS-B	L1455078-1, -10, -11, -12, -2, -4, -5, -6, -7, -8, -9
Matrix Spike	Potassium (K)-Dissolved	MS-B	L1455078-1, -10, -11, -12, -2, -4, -5, -6, -7, -8, -9
Matrix Spike	Sodium (Na)-Dissolved	MS-B	L1455078-1, -10, -11, -12, -2, -4, -5, -6, -7, -8, -9
Matrix Spike	Strontium (Sr)-Dissolved	MS-B	L1455078-1, -10, -11, -12, -2, -4, -5, -6, -7, -8, -9
Matrix Spike	Barium (Ba)-Total	MS-B	L1455078-1, -10, -11, -12, -2, -5, -6, -7, -8, -9
Matrix Spike	Calcium (Ca)-Total	MS-B	L1455078-1, -10, -11, -12, -2, -5, -6, -7, -8, -9
Matrix Spike	Lead (Pb)-Total	MS-B	L1455078-1, -10, -11, -12, -2, -5, -6, -7, -8, -9
Matrix Spike	Magnesium (Mg)-Total	MS-B	L1455078-1, -10, -11, -12, -2, -5, -6, -7, -8, -9
Matrix Spike	Selenium (Se)-Total	MS-B	L1455078-1, -10, -11, -12, -2, -5, -6, -7, -8, -9
Matrix Spike	Sodium (Na)-Total	MS-B	L1455078-1, -10, -11, -12, -2, -5, -6, -7, -8, -9
Matrix Spike	Strontium (Sr)-Total	MS-B	L1455078-1, -10, -11, -12, -2, -5, -6, -7, -8, -9
Matrix Spike	Uranium (U)-Total	MS-B	L1455078-1, -10, -11, -12, -2, -5, -6, -7, -8, -9
Matrix Spike	Total Organic Carbon	MS-B	L1455078-3, -6

Qualifiers for Individual Parameters Listed:

Qualifier	Description
MS-B	Matrix Spike recovery could not be accurately calculated due to high analyte background in sample.
RRV	Reported Result Verified By Repeat Analysis

Test Method References:

Reference Information

ALS Test Code	Matrix	Test Description	Method Reference**
ALK-COL-VA	Water	Alkalinity by Colourimetric (Automated)	EPA 310.2
This analysis is carried out using procedures adapted from EPA Method 310.2 "Alkalinity". Total Alkalinity is determined using the methyl orange colourimetric method.			
ANIONS-CL-IC-WR	Water	Chloride by Ion Chromatography	EPA 300.1
This analysis is carried out using procedures adapted from EPA Method 300.1, "Determination of Inorganic Anions by Ion Chromatography", Revision 1.0, April 1999 and from "Determination of Inorganic Anions in Environmental Waters Using a Hydroxide-Selective Column", Application Note 154 v.19, Dionex 2003.			
ANIONS-F-IC-WR	Water	Fluoride by Ion Chromatography	EPA 300.1
This analysis is carried out using procedures adapted from EPA Method 300.1, "Determination of Inorganic Anions by Ion Chromatography", Revision 1.0, April 1999 and from "Determination of Inorganic Anions in Environmental Waters Using a Hydroxide-Selective Column", Application Note 154 v.19, Dionex 2003.			
ANIONS-NO2-IC-WR	Water	Nitrite Nitrogen by Ion Chromatography	EPA 300.1
This analysis is carried out using procedures adapted from EPA Method 300.1, "Determination of Inorganic Anions by Ion Chromatography", Revision 1.0, April 1999 and from "Determination of Inorganic Anions in Environmental Waters Using a Hydroxide-Selective Column", Application Note 154 v.19, Dionex 2003. Nitrate is detected by UV absorbance.			
ANIONS-NO3-IC-WR	Water	Nitrate Nitrogen by Ion Chromatography	EPA 300.1
This analysis is carried out using procedures adapted from EPA Method 300.1, "Determination of Inorganic Anions by Ion Chromatography", Revision 1.0, April 1999 and from "Determination of Inorganic Anions in Environmental Waters Using a Hydroxide-Selective Column", Application Note 154 v.19, Dionex 2003. Nitrate is detected by UV absorbance.			
ANIONS-SO4-IC-WR	Water	Sulphate by Ion Chromatography	EPA 300.1
This analysis is carried out using procedures adapted from EPA Method 300.1, "Determination of Inorganic Anions by Ion Chromatography", Revision 1.0, April 1999 and from "Determination of Inorganic Anions in Environmental Waters Using a Hydroxide-Selective Column", Application Note 154 v.19, Dionex 2003.			
CARBONS-DOC-VA	Water	Dissolved organic carbon by combustion	APHA 5310 TOTAL ORGANIC CARBON (TOC)
This analysis is carried out using procedures adapted from APHA Method 5310 "Total Organic Carbon (TOC)". Dissolved carbon (DOC) fractions are determined by filtering the sample through a 0.45 micron membrane filter prior to analysis.			
CARBONS-TOC-VA	Water	Total organic carbon by combustion	APHA 5310 TOTAL ORGANIC CARBON (TOC)
This analysis is carried out using procedures adapted from APHA Method 5310 "Total Organic Carbon (TOC)".			
EC-MAN-WR	Water	Conductivity by Meter	APHA 2510 (B)
This analysis is carried out using procedures adapted from APHA Method 2510 "Conductivity". Conductivity is determined using an electrode.			
HARDNESS-CALC-VA	Water	Hardness	APHA 2340B
Hardness (also known as Total Hardness) is calculated from the sum of Calcium and Magnesium concentrations, expressed in CaCO3 equivalents. Dissolved Calcium and Magnesium concentrations are preferentially used for the hardness calculation.			
IONBALANCE-VA	Water	Ion Balance Calculation	APHA 1030E
Cation Sum, Anion Sum, and Ion Balance (as % difference) are calculated based on guidance from APHA Standard Methods (1030E Checking Correctness of Analysis). Because all aqueous solutions are electrically neutral, the calculated ion balance (% difference of cations minus anions) should be near-zero.			
Cation and Anion Sums are the total meq/L concentration of major cations and anions. Dissolved species are used where available. Minor ions are included where data is present. Ion Balance is calculated as:			
Ion Balance (%) = [Cation Sum-Anion Sum] / [Cation Sum+Anion Sum]			
MET-D-CCMS-VA	Water	Dissolved Metals in Water by CRC ICPMS	APHA 3030 B&E / EPA SW-846 6020A
This analysis is carried out using procedures adapted from "Standard Methods for the Examination of Water and Wastewater" published by the American Public Health Association, and with procedures adapted from "Test Methods for Evaluating Solid Waste" SW-846 published by the United States Environmental Protection Agency (EPA). The procedures may involve preliminary sample treatment by acid digestion, using hotblock, or filtration (APHA 3030B&E). Instrumental analysis is by collision cell inductively coupled plasma - mass spectrometry (modified from EPA Method 6020A).			
MET-T-CCMS-VA	Water	Total Metals in Water by CRC ICPMS	APHA 3030 B&E / EPA SW-846 6020A
This analysis is carried out using procedures adapted from "Standard Methods for the Examination of Water and Wastewater" published by the American Public Health Association, and with procedures adapted from "Test Methods for Evaluating Solid Waste" SW-846 published by the United States Environmental Protection Agency (EPA). The procedures may involve preliminary sample treatment by acid digestion, using hotblock, or filtration (APHA 3030B&E). Instrumental analysis is by collision cell inductively coupled plasma - mass spectrometry (modified from EPA Method 6020A).			
NH3-F-VA	Water	Ammonia in Water by Fluorescence	J. ENVIRON. MONIT., 2005, 7, 37-42, RSC
This analysis is carried out, on sulfuric acid preserved samples, using procedures modified from J. Environ. Monit., 2005, 7, 37 - 42, The Royal Society of Chemistry, "Flow-injection analysis with fluorescence detection for the determination of trace levels of ammonium in seawater", Roslyn J. Waston et al.			



ALS Environmental

www.alsglobal.com

Chain of Custody (COC) / Analytical Request Form

Canada Toll Free: 1 800 668 9878



L1455078-COFC

COC Number: 14 -

Page 2 of 2

Report To		Report From		Below (Rush Turnaround Time (TAT) is not available for all tests)													
Company: EDI		Select Report Format: <input checked="" type="checkbox"/> PDF <input checked="" type="checkbox"/> EXCEL <input checked="" type="checkbox"/> EDD (DIGITAL)		R <input checked="" type="checkbox"/> Regular (Standard TAT if received by 3 pm - business days)													
Contact: Meighan Kearns		Quality Control (QC) Report with Report <input type="checkbox"/> Yes <input type="checkbox"/> No		P <input type="checkbox"/> Priority (2-4 bus. days if received by 3pm) 50% surcharge - contact ALS to confirm TAT													
Address: 2195 - 2nd Avenue Whitehorse, YT Y1A 3T8		<input type="checkbox"/> Criteria on Report - provide details below if box checked		E <input type="checkbox"/> Emergency (1-2 bus. days if received by 3pm) 100% surcharge - contact ALS to confirm TAT													
Phone: 867-393-4882		Select Distribution: <input type="checkbox"/> EMAIL <input type="checkbox"/> MAIL <input type="checkbox"/> FAX		E2 <input type="checkbox"/> Same day or weekend emergency - contact ALS to confirm TAT and surcharge													
		Email 1 or Fax mkearns@edynamics.com		Specify Date Required for E2,E or P:													
		Email 2 adrienne.turcotte@gov.yk.ca		Analysis Request													
Invoice To Same as Report To <input type="checkbox"/> Yes <input checked="" type="checkbox"/> No		Invoice Distribution		Indicate Filtered (F), Preserved (P) or Filtered and Preserved (FP) below													
Copy of Invoice with Report <input checked="" type="checkbox"/> Yes <input type="checkbox"/> No		Select Invoice Distribution: <input type="checkbox"/> EMAIL <input type="checkbox"/> MAIL <input type="checkbox"/> FAX															
Company: EDI		Email 1 or Fax sjenner@edynamics.com															
Contact: S Jenner		Email 2															
Project Information		Oil and Gas Required Fields (client use)															
ALS Quote #: Q38556		Approver ID:		Cost Center:													
Job #: 14-Y-270		GL Account:		Routing Code:													
PO / AFE:		Activity Code:															
LSD:		Location:															
ALS Lab Work Order # (lab use only)		ALS Contact:		Sampler: BSM, CB													
ALS Sample # (lab use only)	Sample Identification and/or Coordinates (This description will appear on the report)			Date (dd-mmm-yy)	Time (hh:mm)	Sample Type	ALK-COL-VA,P,T-COL-VA,IONBALANCE-V	ANIONS-ALL-IC-WR,TDS-CALC-VA	EC-MAN-WR,PH-MAN-WR	TSS-LOW-WR	CARBONS-TOC-VA,NHS-F-VA	CARBONS-DOC-VA	MET-T-COMIS-VA,ZR-T-MS-VA	MET-D-CCMIS-VA,ZR-D-MS-VA	HARDNESS-CALC-VA	Number of Containers	
	X14			13MAY14	9:15	GRAB	R	R	R	R	R	R	R	R	R	5	
	X10			13MAY14	9:35	GRAB	R	R	R	R	R	R	R	R	R		
	X10-F			13MAY14	9:40	GRAB	R	R	R	R	R	R	R	R	R		
	X3A			13MAY14	10:05	GRAB	R	R	R	R	R	R	R	R	R		
	X2			13MAY14	10:25	GRAB	R	R	R	R	R	R	R	R	R		
	NF2-A			13MAY14	10:45	GRAB	R	R	R	R	R	R	R	R	R		
	NF2-B			13MAY14	11:00	GRAB	R	R	R	R	R	R	R	R	R		
	NF2			13MAY14	11:15	GRAB	R	R	R	R	R	R	R	R	R		
Drinking Water (DW) Samples¹ (client use)				Special Instructions / Specify Criteria to add on report (client use)				SAMPLE CONDITION AS RECEIVED (lab use only)									
Are samples taken from a Regulated DW System? <input type="checkbox"/> Yes <input type="checkbox"/> No				Use CH2M_EQUIS for EDD.				Frozen <input type="checkbox"/> SIF Observations Yes <input type="checkbox"/> No <input type="checkbox"/>									
Are samples for human drinking water use? <input type="checkbox"/> Yes <input type="checkbox"/> No								Ice packs Yes <input type="checkbox"/> No <input type="checkbox"/> Custody seal intact Yes <input type="checkbox"/> No <input type="checkbox"/>									
								Cooling Initiated <input type="checkbox"/>									
								INITIAL COOLER TEMPERATURES °C				FINAL COOLER TEMPERATURES °C					
SHIPMENT RELEASE (client use)				INITIAL SHIPMENT RECEPTION (lab use only)				FINAL SHIPMENT RECEPTION (lab use only)									
Released by:		Date:	Time:	Received by:		Date:	Time:	Received by:		Date:	Time:	Received by:		Date:	Time:		

REFER TO BACK PAGE FOR ALS LOCATIONS AND SAMPLING INFORMATION

WHITE - LABORATORY COPY YELLOW - CLIENT COPY

NA-FM-0016 v09 From 04 January 2014

Failure to complete all portions of this form may delay analysis. Please fill in this form LEGIBLY. By the use of this form the user acknowledges and agrees with the Terms and Conditions as specified on the back page of the white - report copy.