

YUKON GOVERNMENT – ASSESSMENT AND ABANDONED MINES

**SURFACE WATER QUALITY SAMPLING FIELD MANUAL
CONFIRMATORY MONITORING PROGRAM**

MOUNT NANSEN SITE

Prepared for the 2013/2014 Fiscal Year

Confirmatory Monitoring Program (CMP)

Assessment and Abandoned Mines (AAM) has established a Confirmatory Monitoring Program (CMP) for the Mount Nansen site. The CMP was implemented as a confirmatory inspections program to ensure that the Site Operations Contractor and Water Resources Contractor are reporting appropriate surface water quality information in their monthly environmental reports to AAM, and to verify the robustness of surface water quality sampling at the site. This program confirms that the aquatic environment at the Mount Nansen site is protected, by confirming effluent discharge levels.

Surface water quality at the Mount Nansen site is sampled on a monthly basis by the Site Operations Contractor. The Water Resources Contractor samples surface water bi-weekly or more during freshet (May-June), and monthly during the remainder of the year (July-April). The Site Operations Contractor monitors surface water quality at sites relevant to effluent discharge, in order to verify compliance with standards as outlined in its contract with AAM. The Water Resources Contractor monitors surface water quality through a much larger program in order to collect full baseline data for closure planning and design. Sampling procedures followed by AAM match procedures followed by the contractors.

This program will add defensibility to the comments and statements issued from the Site Operations Contractor and Water Resources Contractor regarding effluent quality at the Mount Nansen site. In addition, the collection of tertiary data at the reference points and discharge points will provide additional data at sites of interest. Comparisons between data collected by the Site Operations Contractor, the Water Resources Contractor and AAM will be undertaken monthly by AAM to ensure the integrity of all surface water sampling conducted.

This CMP Field Manual was designed as a reference guide for AAM staff conducting surface water quality sampling, to ensure consistency within the CMP.

Contents

1. Site Safety and Responsibilities	4
2. Sample Site Locations and Sampling Schedule	5
3. Parameters and Analytes	7
4. Equipment and Supplies	9
Equipment Calibration	9
5. Sample Collection Procedure	10
6. Quality Control	12
Duplicate	12
Field Blank	12
Travel Blank	12
7. Field Notebook	13
8. Chain of Custody (COC) and Sample Delivery	15
9. Data Management	15
10. Reporting	15

NOTE: This document is evolving and will be reviewed annually for appropriate changes.

1. Site Safety and Responsibilities

Upon arrival to the Mount Nansen site, all persons must check in at the bunkhouse. A site safety orientation must be completed annually. All persons are required to follow site safety guidelines while on the Mount Nansen site; which includes wearing required Personal Protective Equipment (PPE).

Required PPE that each individual must wear while on the Mount Nansen site includes, but is not limited to:

- CSA approved steel-toed footwear;
- Hi-vis safety vest or clothing with equivalent safety markings; and
- Hard hat.

Where the use of a life vest is required to sample safely, personnel should put on the life vest before entering the environment where it is required. For example, if work is being conducted on the banks of a fast flowing creek or river, personnel should don the life vest well before arriving at the bank of the river.

Personnel collecting data for the CMP must be aware of their personal safety at all times. Abandoned mine sites have many risks and personnel must be aware of those risks. Some risks to personal safety may include:

- Fast moving water;
- Contaminated areas;
- Open water;
- Heavy machinery (operational);
- Vehicle traffic;
- Adverse weather including ice conditions;
- Wildlife; and
- Unstable structures or terrain.

Personnel must be comfortable evaluating situations to determine risks to personal safety and whether those risks are acceptable. If there are any concerns about site safety the AAM supervisor responsible should be consulted, and the Site Operations Contractor should be notified. Personnel should not sample surface water quality sites or proceed on the Mount Nansen site if personal safety risks are too great or unknown.

All equipment, instruments and sampling will be operated and conducted by trained personnel to ensure safety of personnel, and quality of the data collected. All sample collection will follow this Field Manual, with an emphasis on safety at each sample location.

2. Sample Site Locations and Sampling Schedule

The Water Resources Contractor will undertake comprehensive surface water quality sampling at sites on affected drainages, as well as unaffected reference sites, as per its contract with AAM. The Site Operations Contractor will conduct surface water quality sampling limited to effluent discharge locations, to ensure water quality compliance of discharge. AAM will also conduct surface water quality sampling at compliance locations for the CMP.

The CMP will begin in May; in order to coincide with spring freshet. AAM collects samples once a month to coincide with the sampling conducted by the Water Resources Contractor and the Site Operations Contractor.

A map of the Mount Nansen site with the specific sample site locations is provided in Figure 1 in the Figures Section of this report.

Table 1 lists each surface water quality site that is sampled, as well as the rationale for selecting that particular site for sampling and the frequency with which each party conducts sampling.

Table 1 – Surface Water Quality Sites, Selection Rationale and Sampling Schedule

Site Name	Selection Rationale	Sampling Party and Frequency		
		AAM	Site Operations Contractor	Water Resources Contractor
Dry Creek - Ref	Indicative of water quality at elevation similar to D-X in an adjacent valley beyond the influence of the Mount Nansen site			Bi-weekly
D-X	Indicative of water quality just above the Mill Site			Bi-weekly
D-1	Indicative of water quality just downstream of the Mill Site			Bi-weekly
Upper Dome Creek	Upstream of the Tailings Pond; Indicative of water quality downstream of the Mill Site			Bi-weekly
Tailings	Indicative of water quality in the tailings pond; Flows into the Seepage Pond	Monthly	Bi-weekly	Bi-weekly
Seepage	Indicative of water quality at the seepage discharge; Effluent flows into Dome Creek	Monthly	Bi-weekly	Bi-weekly
Dome Creek @ Road	Downstream of tailings pond and seepage discharge; The most downstream site on Dome Creek;	Monthly	Bi-weekly	Bi-weekly

	Indicative of water quality entering Victoria Creek			
Pony Creek u/s	Upstream of the influence of the Mount Nansen site; Below the influence of placer mining activities on Pony Creek			Bi-weekly
Pony Creek d/s	Downstream of the Brown-McDade Pit; Pony Creek is a tributary to Back Creek and Victoria Creek	Monthly	Bi-weekly	Bi-weekly
Pit	Indicative of water quality in the pit			Bi-weekly
Back Creek	Downstream of the Brown-McDade Pit; The most downstream site on Back Creek (an affected watercourse); Upstream of the confluence with Victoria Creek (an unaffected watercourse)			Bi-weekly
Victoria Creek – Ref	Upstream of the influence of any affected watercourses			Bi-weekly
Upper Victoria Creek	Just upstream of the confluence with Back Creek (an affected watercourse)			Bi-weekly
Victoria Creek at Road	The most downstream site monitored; To capture the influence of all water quality effects			Bi-weekly

3. Parameters and Analytes

For each sampling event the following in situ parameters will be recorded:

- pH;
- Temperature (°C);
- Conductivity ($\mu\text{S}/\text{cm}$); and
- TDS (ppm).

Samples will be tested for the following analytes by an accredited laboratory:

- Acidity
- Alkalinity
- Chloride
- Nitrite
- Nitrate
- Sulphate
- Colour (true)
- Conductivity
- Ion Balance Calculation
- Dissolved Metals
- Total Metals
- Ammonia Nitrogen
- pH
- TDS
- TSS
- Turbidity

The Water Resources Contractor and the Site Operations Contractor will collect the same in situ parameters and have samples tested for the same analytes. Additional analytes will be tested as required for specific sites or sampling events of concern or interest; these are discussed in further detail in Section 8 (Chain of Custody and Sample Delivery).

Detection limits for total and dissolved metals should be set as listed in Table 3 below, or better.

Table 2 - Detection Limits for Total and Dissolved Metals

Analyte	Detection Limit (mg/L)
Aluminum	0.005
Antimony	0.0005
Arsenic	0.0005
Barium	0.02
Beryllium	0.001
Boron	0.1
Cadmium	0.000017
Calcium	0.1
Chromium	0.001
Cobalt	0.0003
Copper	0.001
Hardness (as CaCO ₃)	0.5
Iron	0.03
Lead	0.0005
Lithium	0.005
Magnesium	0.1
Manganese	0.0003
Mercury	0.00001
Molybdenum	0.001
Nickel	0.001
Potassium	2
Selenium	0.001
Silver	0.00002
Sodium	2
Thallium	0.0002
Tin	0.0005
Titanium	0.01
Uranium	0.0002
Vanadium	0.001
Zinc	0.005

4. Equipment and Supplies

For each sampling trip, the following surface water quality sampling equipment and field equipment is required:

- Bottles (enough for sample collection at relevant sites as well as duplicates, blanks and extras);
- Bottle labels and sharpie pen (waterproof permanent felt marker);
- Syringes;
- Filters;
- Nitrile gloves;
- Preservatives;
- De-ionized water (for preparing blanks and rinsing equipment);
- Cooler(s) and frozen ice packs;
- COC forms and ziploc bags (for COC forms during shipment);
- Field notebook and pencils;
- Multi-meter (for in situ measurements) and extra batteries, calibrated;
- Watch;
- Thermometer (for air temperature);
- Camera, charged;
- SPOT and extra batteries;
- Satellite phone, charged;
- Hand Held Radio (must be signed out at Guardhouse with Site Operations Contractor);
- PPE (See Section 1 Site Safety and Responsibilities);
- Rubber boots or waders;
- PFD (if required to sample safely);
- Backpack or tote (for carrying equipment and samples if sites are inaccessible by vehicle); and
- Any other equipment deemed necessary for the conditions.

Equipment Calibration

The HANNA combo pH and conductivity meter requires calibration prior to each field trip. This is likely more often than required; however, as the instrument is used for sampling on more than one project this will ensure accuracy of the readings. The instrument should be calibrated in the office just prior to the field trip, or alternately, in the field. Instructions on how to calibrate the instrument are stored with the instrument and should be kept together. Buffer solution can be ordered from Pine Environmental Services or ALS Environmental Services as required.

Following calibration, add a note in the field notebook detailing the parameters calibrated, date, and person who performed the calibration. Any issues suspected with the instrument should also be recorded, as this will offer insight into any irregular in situ data results.

5. Sample Collection Procedure

For CMP surface water quality sampling, the following procedure is to be followed:

1. At each site put on a new pair of nitrile gloves prior to sampling.
2. Write bottle labels and stick them on the bottles prior to sampling. Let the ink air dry for a minute. This practice ensures the labels stay on the bottles after submersion and the ink doesn't run and become illegible.

Generally, bottle labels should include the following information (note: laboratories may require additional information which should be understood prior to leaving for the field):

Example Label:

Client	Yukon Government
Project	Mount Nansen
Sample ID	Dome Cr. @ Road
Analysis	General Chemistry
Date/Time	10 Oct 2012 11:30am
Preservative Added	Yes / No
Known or Suspected Hazard	If applicable

3. While standing at the edge of the water or in shallow water, try not to disturb the sediment on the bottom. If the sediment is stirred up by your movement, wait until it has settled again before collecting the samples or recording any in situ measurements.
4. For **unfiltered** samples: Remove the cap from the bottle, making sure to not touch the rim of the bottle or the inside of the cap. Fill the bottle with sample water and place the bottle cap back on securely. Repeat for all unfiltered water samples (NOTE: samples should only be left unfiltered for certain parameters, e.g. total metals. If there is uncertainty, the AAM supervisor responsible should be consulted prior to leaving for the field.).
5. For **filtered** samples (dissolved analytes): Unwrap a new syringe from its packaging. Fill the syringe with sample water and place a new filter on the end of the syringe. Remove the cap from the dissolved metals bottle, making sure to not touch the rim of the bottle or the inside of the cap. Fill the dissolved metals bottle with **filtered** syringe water, using a new filter for every syringe volume, or more if required (if the water is dirty often multiple filters per syringe volume are required). Place the bottle cap back on securely.
6. Add preservatives to all water samples at each site. All samples except general chemistry require preserving.

7. Place the samples in the cooler with frozen ice packs as soon as possible after collection. During winter, ice packs may not be required, as long as temperatures are cool enough (approximately 4°C).
8. Following sample collection, take in situ measurements at each sample site and record results with field notes in the field notebook (See Section 7 Field Notebook). If there is an area to place the meter in the water without disturbing sediments on the bottom, take the measurements from there. If there is not enough water to do so, collect water in a container large enough to hold the meter and take measurements from there. Triple rinse the container with sample water before measuring in situ parameters.

As described in Section 3 (Parameters and Analytes), in situ parameters include:

- pH;
- Temperature (°C);
- Conductivity ($\mu\text{m}/\text{cm}$); and
- TDS (ppm).

Additionally, field notes will include the following information:

- Sampler's name, helper's name (if applicable);
 - Date;
 - Time;
 - Sample site name (Sample ID);
 - Approximate air temperature;
 - Weather conditions (e.g. sunny, overcast, cloudy, light rain, etc...);
 - Photo numbers and descriptions (if applicable); and
 - Additional observations/notes (e.g. nearby works which may affect sample quality, changes in site conditions since last visit, frozen areas, flooded areas, issues or concerns relating to the collection of samples, fresh snow, etc...).
9. Following sample collection, take photos of each sample site. Record the photo numbers in the field notebook for future reference.
 10. At one of the sites prepare a duplicate and a field blank (See Section 6 Quality Control for instructions). Indicate in the field notes which site these prepared at. Label the samples with either "Dup" or "FB" for the sample ID on the label.

6. Quality Control

Quality control samples should be collected in addition to regular samples during each sampling event. For each sampling event 1 duplicate (“Dup”), 1 field blank (“FB”) or 1 travel blank (“TB”) sample will be submitted for analysis with the regular samples.

The field notes will indicate at which site the quality control samples were prepared. These samples should be prepared in the same manner as regular samples collected at the site (See Section 5 Sample Collection Procedure). For example, when preparing a duplicate or field blank for dissolved metals, the sample preparation will include preserving and filtering. Quality control samples will be labelled in same way as regular samples, except they will be named “Dup”, “FB” or “TB” in the Sample ID section of the label.

Duplicate

The purpose of a duplicate is to check the precision and accuracy of the lab equipment used to analyze the samples.

Duplicate samples are secondary samples taken at a regular sample site. Duplicates are collected at the same time and location of a regular sample, with all the same parameters and are prepared and analyzed following the same procedures as regular samples (filtering and preserving). When a duplicate is taken at a site, two full sample sets are collected with one being named the regular site ID, and the other being named “Dup”.

Field Blank

The purpose of a field blank is to identify any contamination of the sample caused by the sampler, the filtration or preservation process, or the bottle itself.

Field blanks are made up of de-ionized water brought to site by the sampler and prepared at the sample site of a regular sample as though it is sample water. Field blanks are prepared at the same time and location of a regular sample, with all the same parameters and are prepared and analyzed following the same procedures as regular samples (filtering and preserving). When a field blank is prepared at site, de-ionized water is used instead of sample water, and the sample ID is labelled “FB”.

Travel Blank

The purpose of a travel blank is to identify any contamination of the samples caused by the transportation and storage process.

Travel blanks are prepared by the laboratory for transport to the site and around the site during the sampling field work. Travel blanks are never opened on site or at any time. Travel blanks are analyzed with the rest of the samples from the sampling event.

7. Field Notebook

The Mount Nansen CMP has a specific field notebook that should accompany the sampler during all sampling events for proper documentation of all relevant information and observations. The sampler should consider the following when recording notes in the field notebook:

- Although the field notebook is waterproof, pencil should be used rather than ink because ink will run or fade if the pages become wet or rub together.
- If a mistake is made, do not erase. Strike a line through the error and write the notes below.
- Keep the field notebook in a safe place. It contains original notes from the time and location of different sampling events and is considered legally binding.

Specific information to include in the field notebook is listed in Section 5 (Sample Collection Procedure), under item 8.

After each field visit, information from the field notebook will be transferred to an electronic field sheet at the office. These field sheets will be filed electronically and allow the data to be viewed in a reader-friendly format. In the event of a discrepancy between the electronic field sheets and the field notebook, the field notebook should be considered accurate. An example of the electronic field sheet is provided below.

FIELD NOTES – MOUNT NANSEN

PROJECT NAME: AAM Confirmatory Monitoring Program

DATE SAMPLED:

SAMPLING CONDUCTED BY:

WEATHER CONDITIONS:

FIELD MEASUREMENTS:

Sample Site ID	Time of sample collection	In Situ Measurements				Parameters for Analysis	Photo #s
		Temp (°C)	Conductivity (µs/cm)	pH	TDS (ppm)		

ADDITIONAL COMMENTS:

NAME:	SIGNATURE:	DATE:
--------------	-------------------	--------------

8. Chain of Custody (COC) and Sample Delivery

Once all of the samples have been collected, a COC form will be filled out and accompany the samples to the lab for analysis. COC forms are provided by the accredited laboratory and indicate the samples collected, date, time, analysis requested, turnaround time requested, and report format requested for the samples. One form will be filled out and submitted with the samples for each sampling event. It should not be necessary to fill out a separate COC for each cooler if there is more than one cooler of samples, check with the laboratory in advance of submitting the samples.

Samples must be placed upright in a cooler to keep possible spillage to a minimum. Ice packs must be placed in each cooler to keep samples cool (as close to 4°C as possible) during transport in warmer months. The sampler will drop off the coolers with the COC to the accredited laboratory or a shipping agent as soon as possible after sampling is complete (ideally on the day of sampling). On delivery of the samples to the laboratory, a copy of the COC is to be kept and filed at AAM as a record of the submission.

The sampler should be aware of the following when filling out the COC:

- Report format in pdf and excel;
- Standard turn-around time;
- Send a copy of the invoice to aam-admin@gov.yk.ca; and
- Job# is Mount Nansen.

9. Data Management

Surface water quality analysis data will be requested from ALS Environmental Services in pdf and excel format, and will be received by email, as indicated on the COC. These files will be filed on the G: drive under the following directory:

G:\AAM\Mt. Nansen\6040 Implementation\2012-13\Section 2- Operations & Maintenance\2.2.1.2 Monitor to confirm water quality\Analysis .

10. Reporting

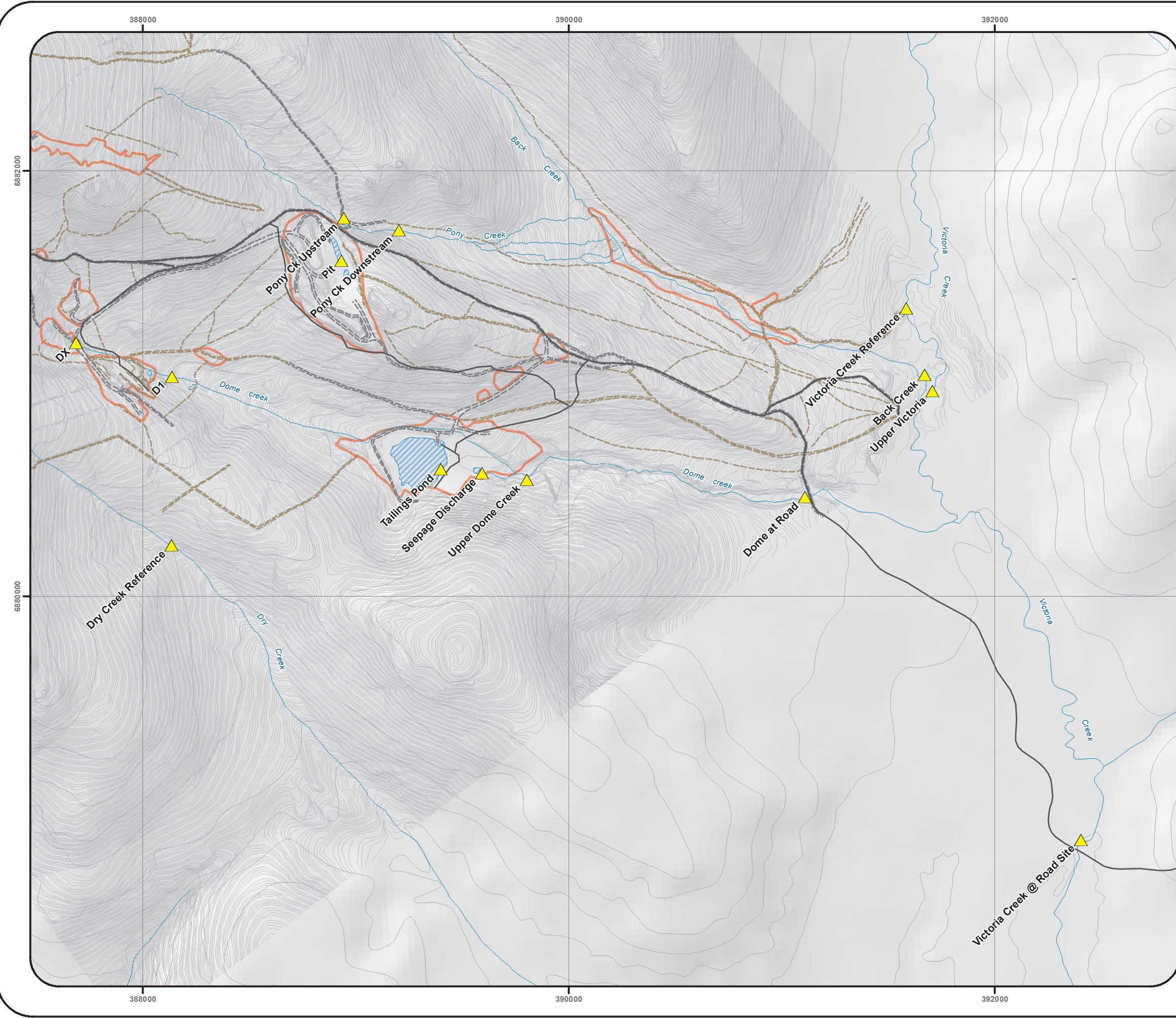
A monthly compliance reporting memo should be issued to the AAM Senior Project Manager and Manager, highlighting results of the data collected for that month. Memos will indicate any issues or concerns with the results from the laboratory, and will compare surface water quality results from sampling conducted by AAM to the results collected by the Site Operations Contractor and the Water Resources Contractor. The memos will identify parameters with results that vary significantly between sampling parties for that month, as well as parameters which consistently vary between sampling parties over several months. Additionally, the memos will identify parameters which are consistently

above contractual guidelines. In the event that consistent issues occur with data collection or certain parameters, meetings with AAM CMP staff and/or Contractors will be held to address and manage these issues appropriately.

Monthly compliance reporting memos will be filed on the G: drive under the following directory:

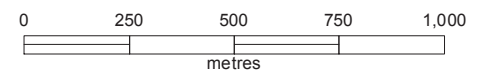
G:\AAM\Mt. Nansen\6040 Implementation\2012-13\Section 2- Operations & Maintenance\2.2.1.2 Monitor to confirm water quality\Monitoring Reports .

FIGURES



LEGEND

- Water Quality Sample Site
- Main Access Roads
- Gravel Road - Site Specific
- Trails
- Mine Disturbance Area
- Contours



Scale 1:18,000 (printed on 11x17)

DRAFT

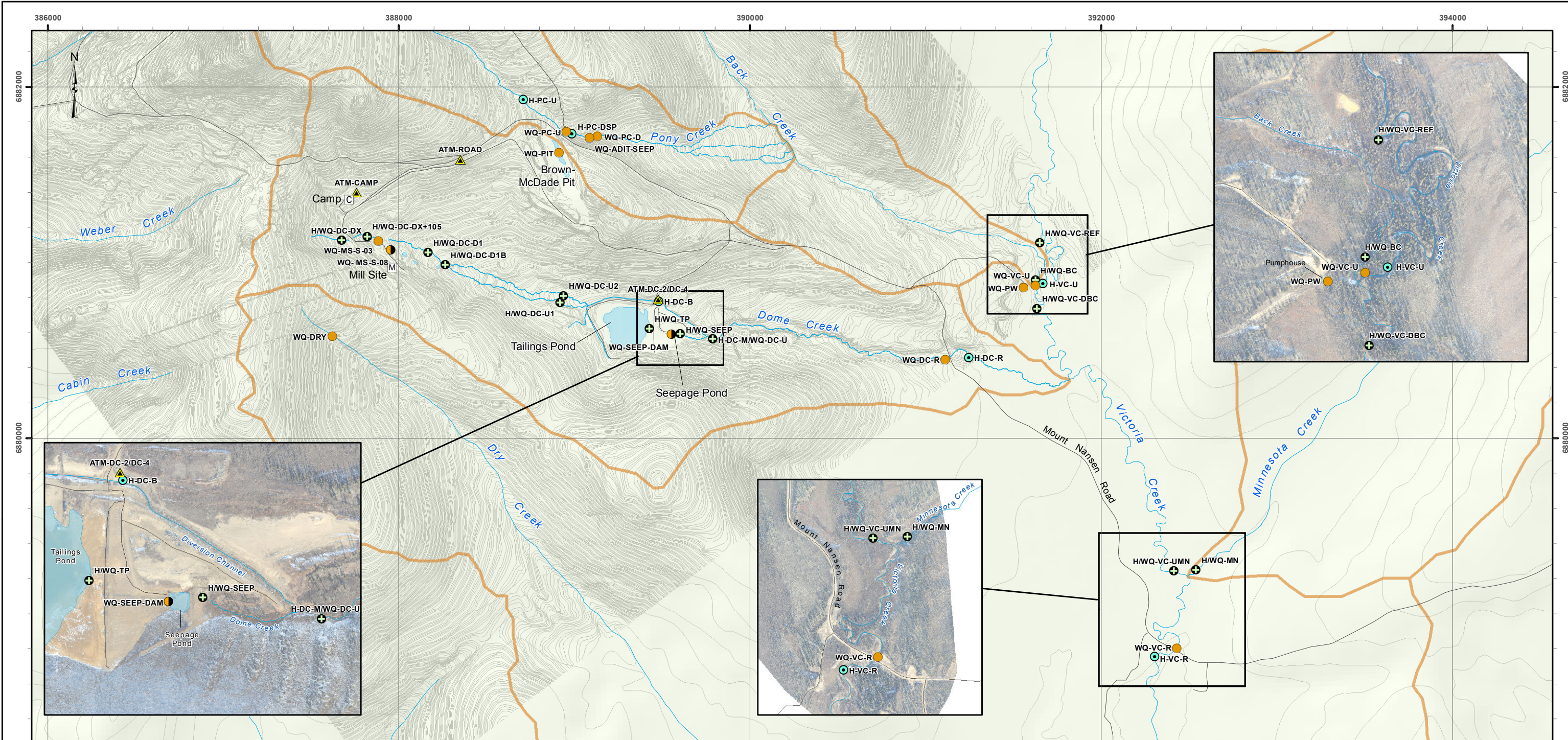
MT. NANSEN WATER RESOURCE MONITORING

**Map 2:
Water Quality Sampling Sites**

Drawn: M. Power	Datum/Projection: NAD 1983 UTM Zone 8N
Checked: J. Bachman	EDI Project No.: 11-Y-0227
Date: 8/29/2011	Data Sources: Geomatics Yukon / AAM / EDI



Path: J:\Yukon\Projects\2011\11_Y_0227\Mt_Nansen_Hydrology\Maping\WQ_Sites.mxd



Mount Nansen Site: Hydrometric and Water Quality Stations

Legend

- Atmospheric Station (label ex: ATM-DC-2)
- Hydrometric and Water Quality Station (label ex: HWQ-VC-UMN)
- Hydrometric Station (label ex: H-VC-R)
- Water Quality Station (label ex: WQ-PC-U)
- Temporary Water Quality Site (label ex: WQ-MS-S-08)
- Unpaved Road/Access
- Contours (1 m where contours are shown in detail)
- Drainage Areas (Local)

1:50,000 and 1:250,000 Topographic Spatial Data provided by Geomatics - Yukon Government via online source (Corporate Spatial Warehouse) www.geomaticsyukon.ca.

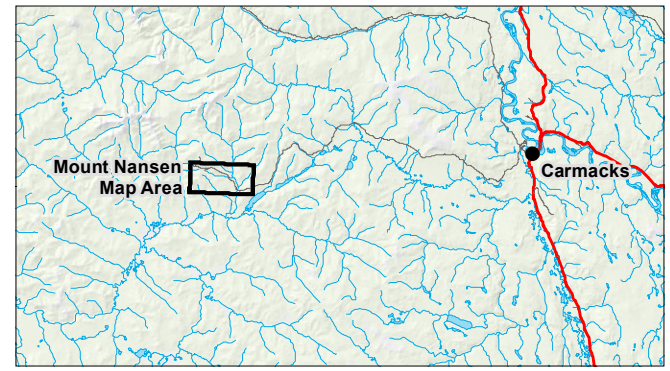
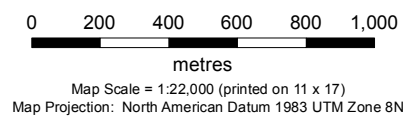
Digital Elevation Model provided by Geomatics - Yukon Government via online source (Corporate Spatial Warehouse) www.geomaticsyukon.ca.

Watercourse, drainage areas and Mount Nansen Road layers digitized / modified by EDI (2011) using orthophotos provided by Yukon Government, Energy, Mines and Resources (2011).

Contours (1 metre) were provided by Yukon Government Department of Energy, Mines and Resources (2012).

Project data displayed is site specific. Data collected by EDI Environmental Dynamics Inc. (2011) was obtained using Garmin GPS technology.

This document is not an official land survey and the spatial data presented is subject to change.



Drawn: LG / MP	Checked: JB / MM	FIGURE 2	Date: 12/5/2012
-------------------	---------------------	-----------------	-----------------

