

PA.

195

TEST PIT PHOTOGRAPHS

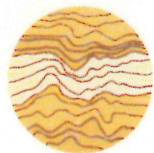
McLEAN LAKE SUBDIVISION
WHITEHORSE, YUKON TERRITORY

FOR

YUKON COMMUNITY AND TRANSPORTATION SERVICES

PA 2295

NOVEMBER 1986



KLOHN LEONOFF
CONSULTING ENGINEERS

20A
1986
24

TEST PIT PHOTOGRAPHS

McLEAN LAKE SUBDIVISION
WHITEHORSE, YUKON TERRITORY

for

YUKON COMMUNITY AND TRANSPORTATION SERVICES



#1-1 LOOKING NORTH @ TP 86-1



#1-2 LOOKING NORTH @ SAND & GRAVEL
IN EXIST. DEPRESSION
JUST NORTH OF TP 86-1



1-3 LOOKING DOWN TP BG-2



#1-4 TP BG-2 EXCAVATED SOIL



1-5 LOOKING WEST DOWN TRAIL TO TP 86-2
(NOTE SWAMPY GROUND BEHIND BACKHOE)



1-6 LOOKING NORTH-WEST ALONG
TRAIL TO TP 86-3



#1-7 TP86-3 EXCAVATED SOIL
TO 1.0 m - GRAVEL



#1-8 LOOKING
DOWN TP86-3



1-9 TP 86-3 EXCAVATED SOIL
TO 1.7m DEPTH - SAND



1-10 LOOKING NORTH-WEST ALONG
TRAIL TO TP 86-4



#1-11 LOOKING DOWN TP 86-4
(OUT OF FOCUS)



#1-12 TP 86-4 EXCAVATED SOIL



#1-13 LOOKING DOWN TP 86-5



#1-14 TP 86-5 EXCAVATED SOIL



#1-15 LOOKING EAST AT TP 86-5 SITE
(NOTE HOUSING IN BACKGROUND
BEHIND TREES)



#1-16 LOOKING DOWN TP 86-6



#1-17 TP 86-G EXCAVATED SOIL



#1-18 LOOKING NORTH-WEST @ TP 86-G
SITE. EXIST TRAIL (ACCESS ROAD)
IS TO RIGHT OF BACKHOE.



1-19 LOOKING NORTH-WEST @ TP 86-7 SITE
EXIST. ACCESS ROAD IS TO THE
RIGHT OF TEST PIT



#1-20 LOOKING DOWN TP 86-7



#1-21 LOOKING NORTH-EAST AT TP 86-B SITE
NOTE HUGE (5') BOULDERS ON
GROUND SURFACE TRENDING NE-NW



#1-22 TP 86-B EXCAVATED SOIL



#1-23 LOOKING DOWN TP BG-8
WEST WALL



#1-24 LOOKING DOWN TP BG-8
EAST WALL



#1-25 LOOKING DOWN TP 86-9



#1-26 TP 86-9 EXCAVATED SOIL



1-27 LOOKING NORTH ALONG ROAD
ADJACENT TO TP 86-9



1-28 TP 86-10 EXCAVATED SOIL



1-29 LOOKING DOWN TP 86-10



1-30 LOOKING WEST ALONG ROAD
TO TP 86-10



#1-31 LOOKING DOWN TP 86-11



#1-32 TP 86-11 EXCAVATED SOIL



#1-33 LOOKING NORTH ALONG ROAD
ADJACENT TO TP 86-11



#1-34 TP 86-12 EXCAVATED SOIL



#1-35 LOOKING DOWN TPBG-12
(NOTE WATER LEVEL @ 1.1m)



#1-36, 1-37 LOOKING EAST @ TPBG-12
SITE. NOTE MOUND ON L.H.S.
& LAKE IN BACKGROUND PLUS

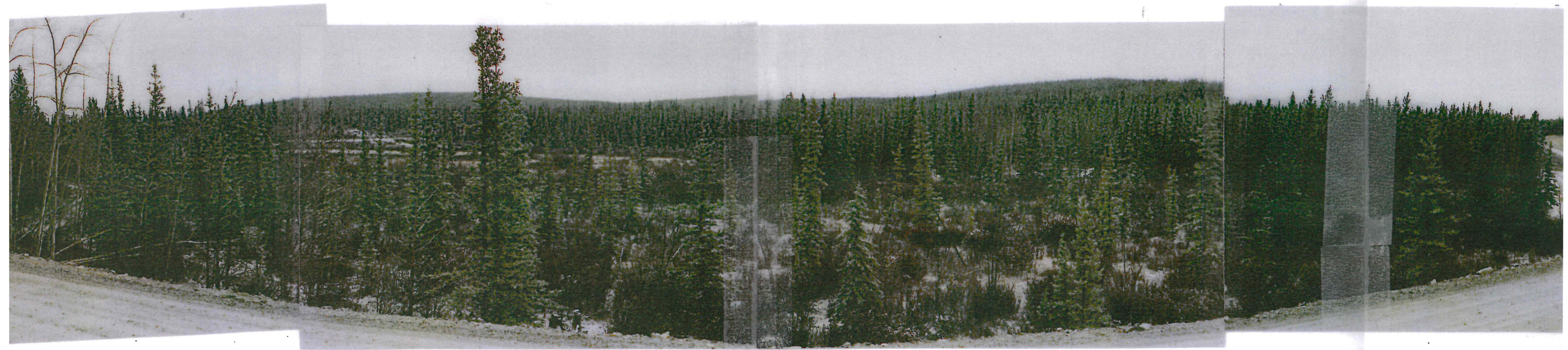




2-17, 2-18, 2-19 LOOKING NORTH TO EAST (RIGHT TO LEFT)
AT EXPOSED SOILS (TILL-LIKE NEAR
INTERSECTION OF LOW BIRD ROAD (UPPER)
AND QUARRY ROAD (LOWER))



2-20, 2-21 CUT SLOPE ALONG QUARRY ROAD
BROWN FINE TO COARSE SAND, SILTY
(DECOMPOSED GRANITE)



2-22, 2-23; 2-24, 2-25 LOOKING SOUTH-EAST TO SOUTH-WEST
(LEFT TO RIGHT) OFF QUARRY ROAD AT SWAMPY AREA
IN NORTH END OF MCLEAN LAKE SUBDIVISION SITE



#2-0 TP 86-13 EXCAVATED GRAVELS



#2-1 LOOKING DOWN TP 86-13



2-2 LOOKING WEST UP ROAD TO TP 86-13



2-3 TP 86-14 EXCAVATED SOIL



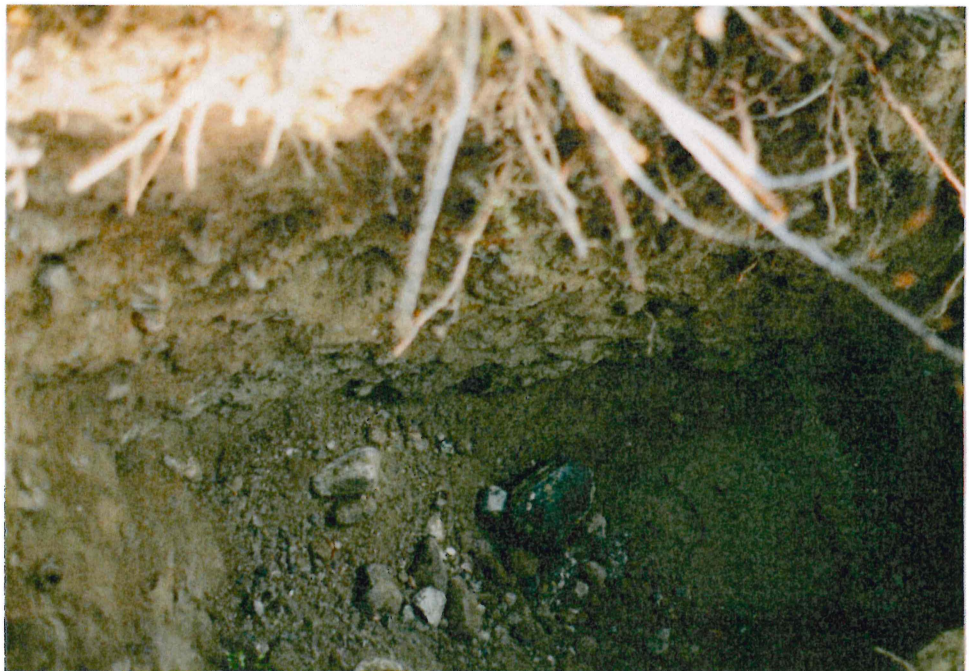
2-4 LOOKING DOWN TP 86-14



2-5 LOOKING NORTH-WEST ALONG MUDDY ROAD ADJACENT TO TP 86-14



2-6 TP 86-15 EXCAVATED SOIL



2-7 LOOKING DOWN TP 86-15



2-8 LOOKING NORTH-EAST UP ROAD
ADJACENT TO TP 86-15



2-9 LOOKING DOWN TP 86-16
(ROCK AT BOTTOM OF PIT @ 0.4m)



2-10 EXCAVATED SOIL & TOPSOIL TP BG-16



2-11 LOOKING NORTH-EAST UP ROAD
ADJACENT TO TP BG-16



2-12 LOOKING DOWN TP 86-17
(NOTE BEDROCK ? @ BOTTOM
OF PIT @ 1.6 m)



2-13 TP 86-17 EXCAVATED SOIL



2-14 LOOKING NORTH-EAST ALONG ROAD
TOWARD TP 86-17. NOTE BEDROCK
OUTCROP IN FOREGROUND (POCKET TAPE)
AT SIDE OF ROAD



2-15 CLOSE-UP OF BEDROCK OUTCROP
ALONG ROAD NEAR TP 86-17



2-16 LOOKING NORTH-EAST
BEDROCK OUTCROP NEAR INTERSECTION
OF LOW BIRD ROAD (UPPER) AND
QUARRY ROAD (LOWER - BEHIND
PHOTOGRAPHER)



3-4, 3-5 LOOKING EAST ALONG ROAD TO TP 86-18
 LOCATED IN A SADDLE AREA



#3-1 LOOKING DOWN TP 86-18



3-2 LAST BUCKET FROM TP 86-18
-BROWN SAND OVER
GREY GLACIAL TILL



#3-3 TP 86-18 EXCAVATED SOIL TO 2.0m



3-6 LOOKING WEST ALONG ROAD TO TP 86-18



3-7 TP 86-19 EXCAVATED SOIL



3-8 LOOKING DOWN TP 86-19



3-9 LOOKING EAST UP ROAD TO
TP 86-19 ON TOP OF MOUND



3-10 LOOKING DOWN TP 86-20



#3-11 LAST BUCKET FROM TP86-20
-GREY GLACIAL TILL



#3-12 TP86-20 EXCAVATED SOIL
INCLUDING LAST BUCKET



3-13 LOOKING NORTH-EAST DOWN ROAD
TO TP BG-20



3-14 LOOKING SOUTH-WEST ALONG ROAD
TOWARDS TP BG-20
NOTE BEDROCK OUTCROP IN FOREGROUND
50 m NORTH-EAST OF TP BG-20



3-15 LOOKING NORTH, CLOSE-UP OF BEDROCK
OUTCROP ALONG ROAD 50m NORTH-EAST
OF TP 86-20 - GRANITE ?



3-16 BEDROCK EXPOSURES ON SLOPE
BELOW EXIST. ROAD AT ABOUT
70m NORTH-EAST OF TP 86-20



3-17, 3-18, 3-19 LOOKING SOUTH-WEST TO NORTH-WEST (LEFT TO RIGHT)
AT BEDROCK EXPOSURES ON SLOPE BELOW ROAD,
APPRX. 100 TO 150 m NORTH-EAST OF TP BG-20



3-20 TP 86-21 EXCAVATED SOIL
- CLEAN SAND & GRAVEL



3-21 LOOKING DOWN TP 86-21



#3-22 LOOKING WEST UP SHORT STEEP ROAD SECTION TO TP BG-21



#3-23 LOOKING DOWN TP BG-22



3-24 TP BG-22 EXCAVATED SOIL



3-24 LOOKING NORTH ALONG
ROAD TO TP BG-22



3-26 TP 86-23 EXCAVATED SOIL
- CLEAN GRAVEL & COBBLES



3-27 LOOKING DOWN TP 86-23



3-28 LOOKING SOUTH ALONG ROAD
TO TP BG-23, FROM "T" INTERSECTION



3-29 LOOKING EAST AT ROCK OUTCROP
BELOW ROAD, APPROX. 25 m
SOUTH OF TP BG-24



3-30, 3-31 LOOKING SOUTH-EAST ALONG SURVEY CUT LINE
APPROX. 30m SOUTH OF TP 86-24. NOTE
BEDROCK OUTCROPS ON SLOPE BELOW ROAD
(R/H'S BACKGROUND)



3-32 TP 86-24 EXCAVATED SOIL



3-33 LOOKING DOWN TP 86-24



3-34 TP 86-24 LAST BUCKET



3-37 SAND & GRAVEL EXPOSURES ON
WEST SIDE OF ALASKA HIGHWAY
ON SLOPE BELOW TP 86-23 & 86-24



3-35, 3-36

LOOKING NORTH-WEST & NORTH (LEFT TO RIGHT)
ALONG ROAD, ABOUT 30 m NORTH-WEST OF TP BG-23
NOTE BEDROCK OUTCROP ON R.H.S OR EAST SIDE OF ROAD



4-1 LOOKING NORTH-WEST ALONG SURVEY
CUT LINE TO TP 86-25



4-2 LOOKING DOWN TP 86-25



#4-3 TP 86-25 EXCAVATED SOIL



#4-4 LOOKING NORTH-WEST ALONG NEWLY
CUT LINE TO TP 86-26



#4-5,4-6 LOOKING SOUTH-EAST @ TP 86-26



#4-7 LOOKING DOWN TP BG-26



#4-8 TP BG-26 EXCAVATED SOIL



#4-9 LOOKING DOWN TP BG-27



4-10 TP BG-27 EXCAVATED SOIL



#4-11 LOOKING DOWN TP BG-28



#4-12 TP BG-28 EXCAVATED SOIL



4-13 LOOKING NORTH-WEST ALONG
SURVEY CUT LINE @ TP 86-28



4-14 LOOKING DOWN TP 86-29



#4-15 JP BG-29 EXCAVATED SOIL



#4-16 LOOKING NORTH-WEST AT
JP BG-29 ON TOP OF MOUND



#4-17, 4-18

LOOKING SOUTH-EAST ALONG EXIST. SURVEY CUT LINE
NOTE BEDROCK OUTCROP ON LHS & ALONG CUT LINE



#4-19 LOOKING DOWN TP 86-30



#4-20 TP 86-30 LAST BUCKET
- GLACIAL TILL



#4-21 LOOKING NORTH-WEST ALONG EXIST.
SURVEY CUT LINE TO TP 86-30
NOTE MOUND 20m BEHIND BACKHOE



#4-22 LOOKING DOWN TP 86-31



4-24 LOOKING SOUTH-EAST ALONG EXIST.
CUT LINE TO TP BG-31. NOTE 4" PVC
PIPE INSTALLED IN PIT PRIOR TO
BACKFILLING, FOR PERCOLATION TESTING



4-23 TP BG-31 LAST BUCKET
-GLACIAL TILL?

