

2016 Yukon Wildland Fires Overview

Scale 1:5,000,000

0 50 100 200 300 400 500 km

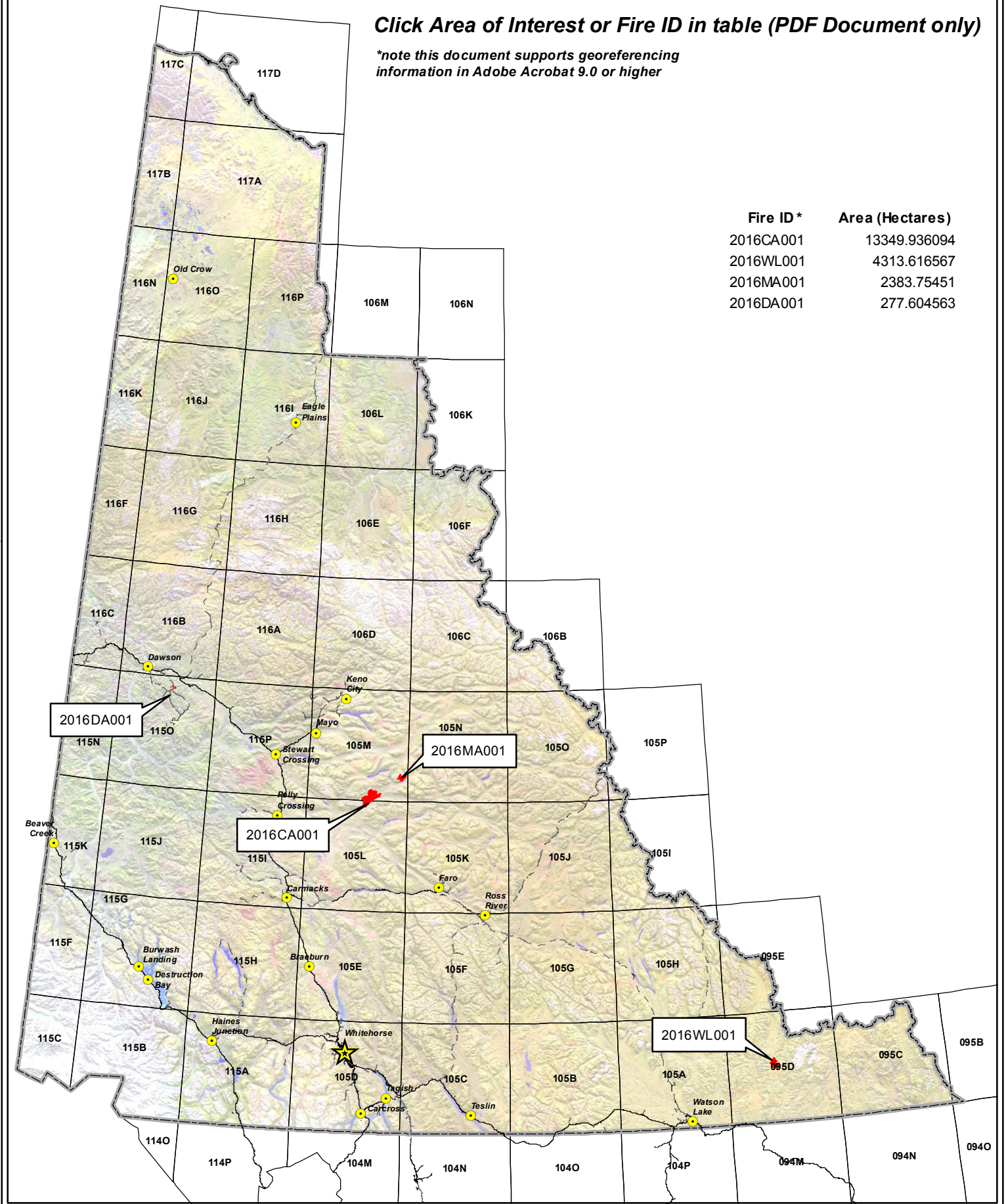


Albers equal area projection (standard parallels: 61°40' & 68°00')

Click Area of Interest or Fire ID in table (PDF Document only)

**note this document supports georeferencing information in Adobe Acrobat 9.0 or higher*

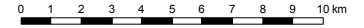
Fire ID *	Area (Hectares)
2016CA001	13349.936094
2016WL001	4313.616567
2016MA001	2383.75451
2016DA001	277.604563



2016 Yukon Wildland Fires

CA-001

Scale 1:250,000 (NAD83)



Albers equal area projection (standard parallels: 61°40' & 68°00')

Legend

- Fire Perimeter
- First Nation Settlement Land
- Lake
- Wetland
- Rivers & Streams
- Yukon Border

Access

- Highway
- Main Road (2wd)
- Secondary Road (2wd)
- Limited-use road (4wd)
- Trail
- Cut line

1:250,000 NTS Map Series Numbers

116A	106D	106C	106B
115P	105M	105N	
115I	105L	105K	
115H	105E	105F	

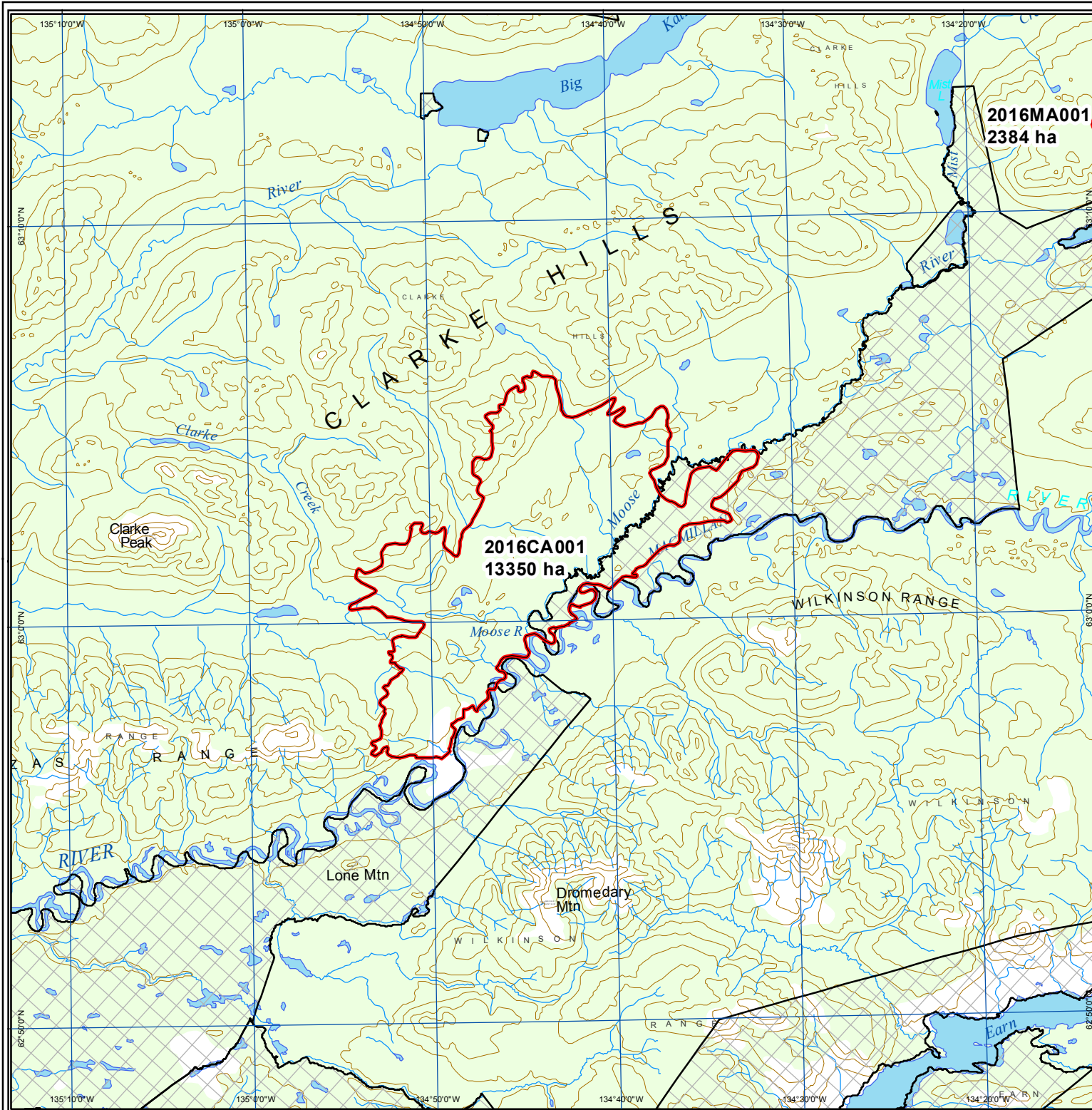
DIGITAL DATA SOURCES AND DISCLAIMERS

National Topographic DataBase (NTDB) compiled by Natural Resources Canada at 1:250,000. Reproduced under license from Her Majesty the Queen in Right of Canada, with permission of Natural Resources Canada.



Map Compiled By:
Wildland Fire Management
Department of Community Services
Government of Yukon

Map Date: 12/21/2016



2016 Yukon Wildland Fires

--- WL-001

Scale 1:200,000 (NAD83)



Albers equal area projection (standard parallels: 61°40' & 68°00')

Legend

- Fire Perimeter
- First Nation Settlement Land
- Lake
- Wetland
- Rivers & Streams
- Yukon Border

Access

- Highway
- Main Road (2wd)
- Secondary Road (2wd)
- Limited-use road (4wd)
- Trail
- Cut line

1:250,000 NTS Map Series Numbers



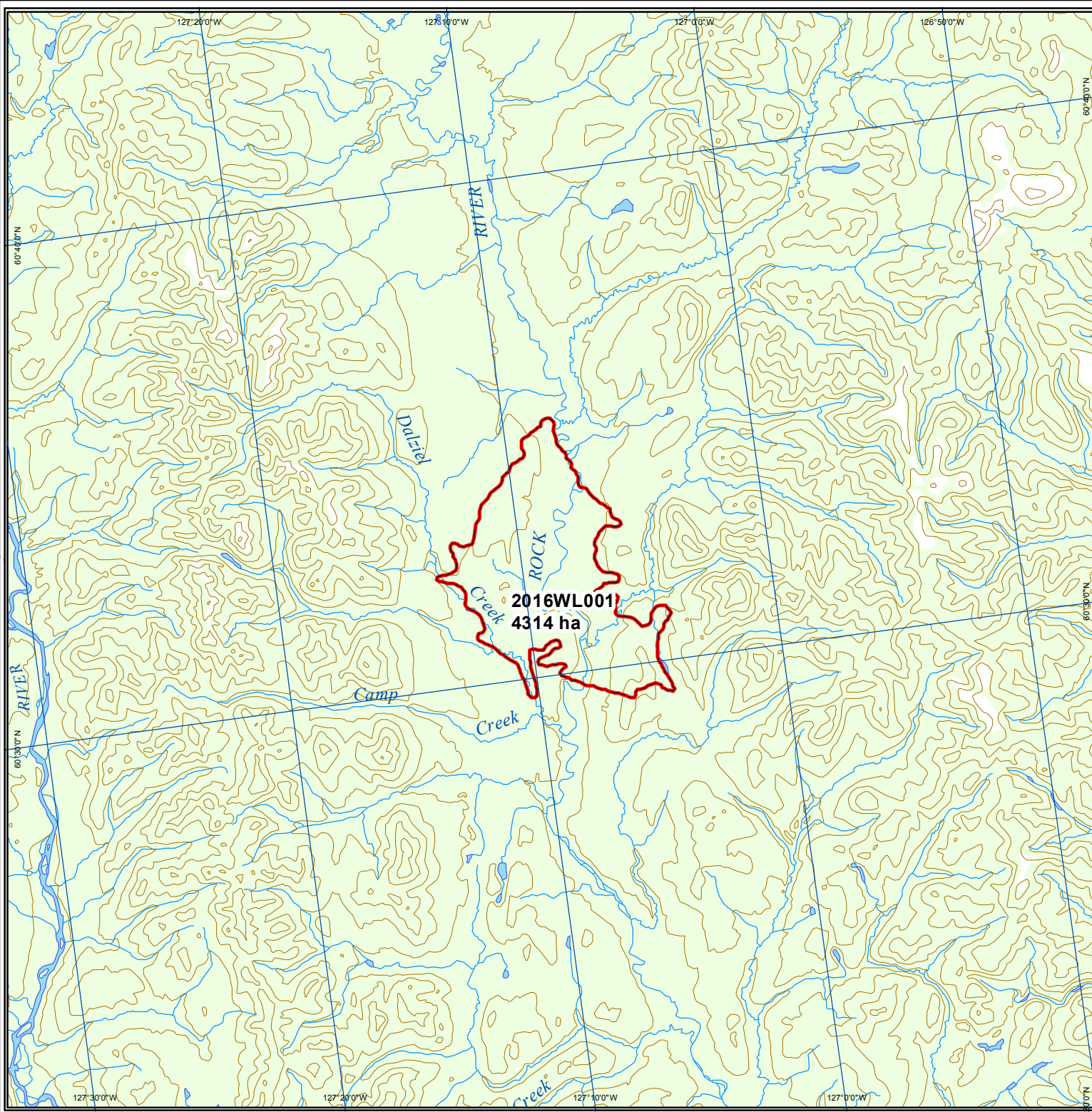
DIGITAL DATA SOURCES AND DISCLAIMERS

National Topographic DataBase (NTDB) compiled by Natural Resources Canada at 1:250,000. Reproduced under license from Her Majesty the Queen in Right of Canada, with permission of Natural Resources Canada.



Map Compiled By:
Wildland Fire Management
Department of Community Services
Government of Yukon

Map Date: 12/21/2016



2016 Yukon Wildland Fires

MA-001

Scale 1:200,000 (NAD83)



Albers equal area projection (standard parallels: 61°40' & 68°00')

Legend

- Fire Perimeter
 - First Nation Settlement Land
 - Lake
 - Wetland
 - Rivers & Streams
 - Yukon Border
- Access**
- Highway
 - Main Road (2wd)
 - Secondary Road (2wd)
 - Limited-use road (4wd)
 - Trail
 - Cut line

1:250,000 NTS Map Series Numbers

116A	106D	106C	106B
115P	105M	105N	105O
115I	105L	105K	105J
115H	105E	105F	105G

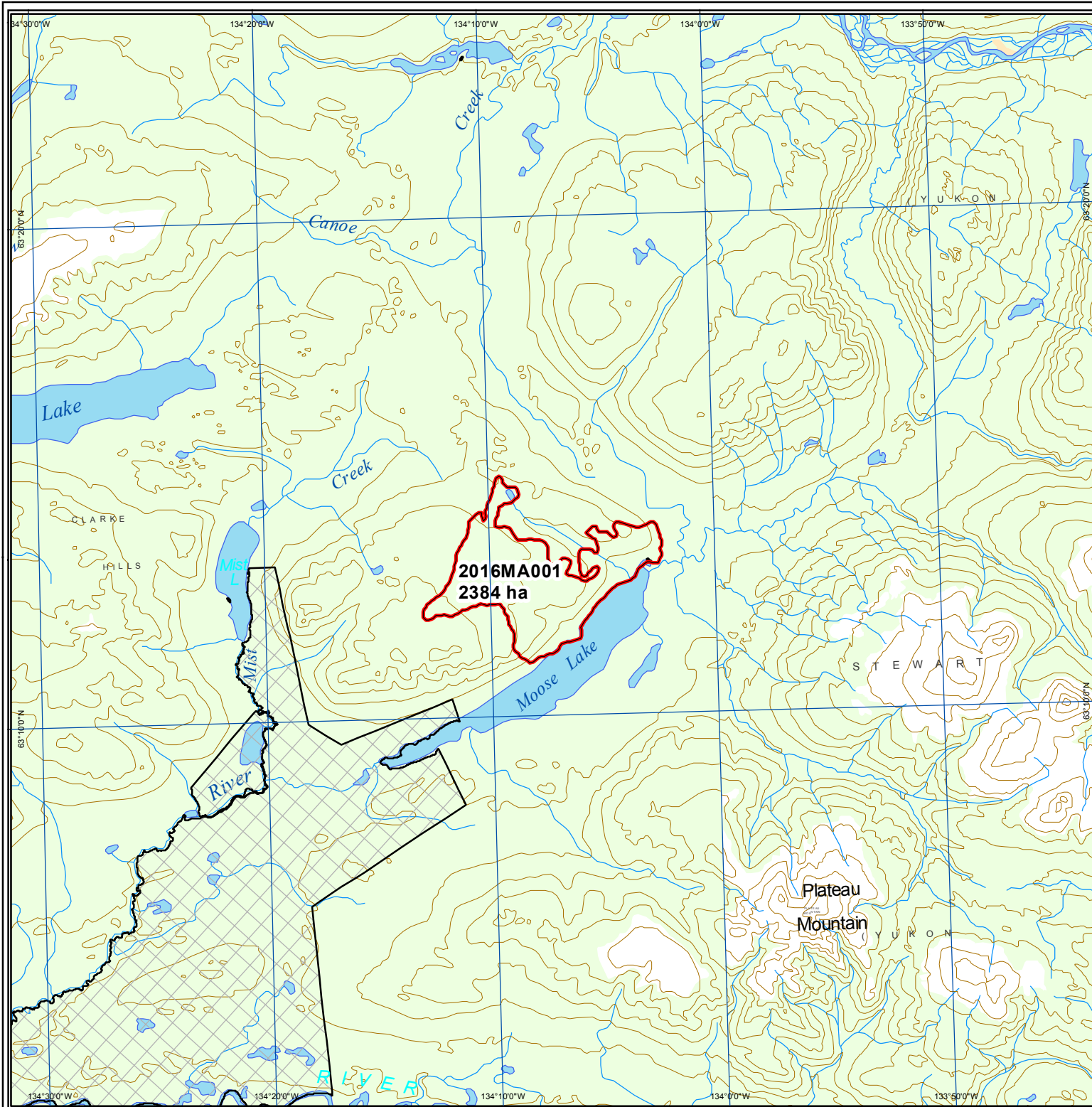
DIGITAL DATA SOURCES AND DISCLAIMERS

National Topographic DataBase (NTDB) compiled by Natural Resources Canada at 1:250,000. Reproduced under license from Her Majesty the Queen in Right of Canada, with permission of Natural Resources Canada.



Map Compiled By:
Wildland Fire Management
Department of Community Services
Government of Yukon

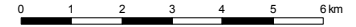
Map Date: 12/21/2016



2016 Yukon Wildland Fires

DA-001

Scale 1:150,000 (NAD83)



Albers equal area projection (standard parallels: 61°40' & 68°00')

Legend

- Fire Perimeter
 - First Nation Settlement Land
 - Lake
 - Wetland
 - Rivers & Streams
 - Yukon Border
- Access**
- Highway
 - Main Road (2wd)
 - Secondary Road (2wd)
 - Limited-use road (4wd)
 - Trail
 - Cut line

1:250,000 NTS Map Series Numbers

116C	116B	116A
115N	115O	115P
115K	115J	115I

2016DA001
278 ha

DIGITAL DATA SOURCES AND DISCLAIMERS

National Topographic DataBase (NTDB) compiled by Natural Resources Canada at 1:250,000. Reproduced under license from Her Majesty the Queen in Right of Canada, with permission of Natural Resources Canada.

Map Compiled By:
Wildland Fire Management
Department of Community Services
Government of Yukon

Map Date: 12/21/2016

