

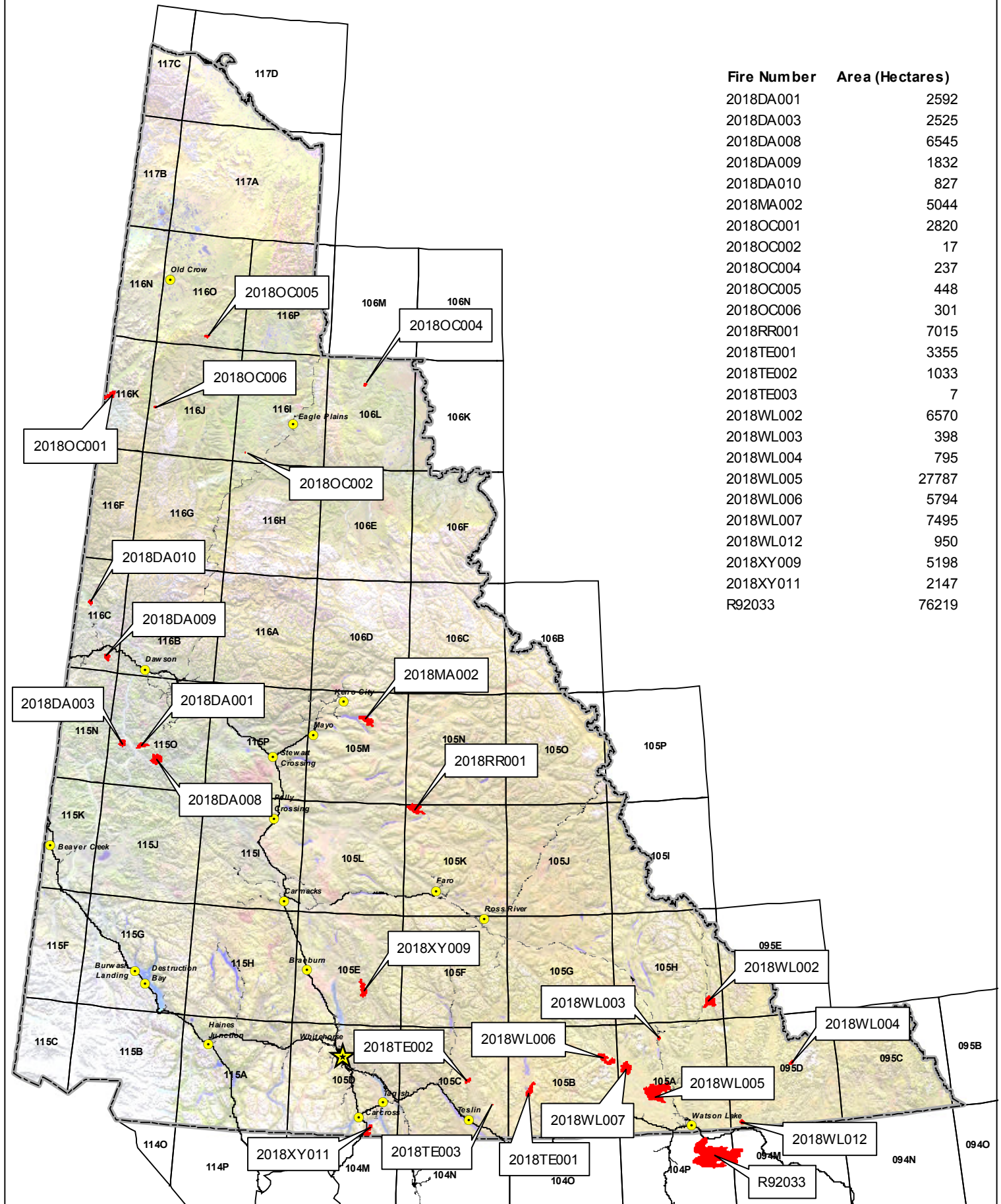
# 2018 Yukon Wildland Fires Overview

Scale 1:5,000,000

0 50 100 200 300 400 500 km



Albers equal area projection (standard parallels: 61°40' & 68°00')

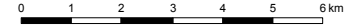


Fire Number	Area (Hectares)
2018DA001	2592
2018DA003	2525
2018DA008	6545
2018DA009	1832
2018DA010	827
2018MA002	5044
2018OC001	2820
2018OC002	17
2018OC004	237
2018OC005	448
2018OC006	301
2018RR001	7015
2018TE001	3355
2018TE002	1033
2018TE003	7
2018WL002	6570
2018WL003	398
2018WL004	795
2018WL005	27787
2018WL006	5794
2018WL007	7495
2018WL012	950
2018XY009	5198
2018XY011	2147
R92033	76219

# 2018 Yukon Wildland Fires

DA-001

Scale 1:150,000 (NAD83)



Albers equal area projection (standard parallels: 61°40' & 68°00')

## Legend

- Fire Perimeter
- First Nation Settlement Land
- Lake
- Wetland
- Rivers & Streams
- Yukon Border

## Access

- Highway
- Main Road (2wd)
- Secondary Road (2wd)
- Limited-use road (4wd)
- Trail
- Cut line

## 1:250,000 NTS Map Series Numbers

116C	116B	116A
115N	115O	115P
115K	115J	115I

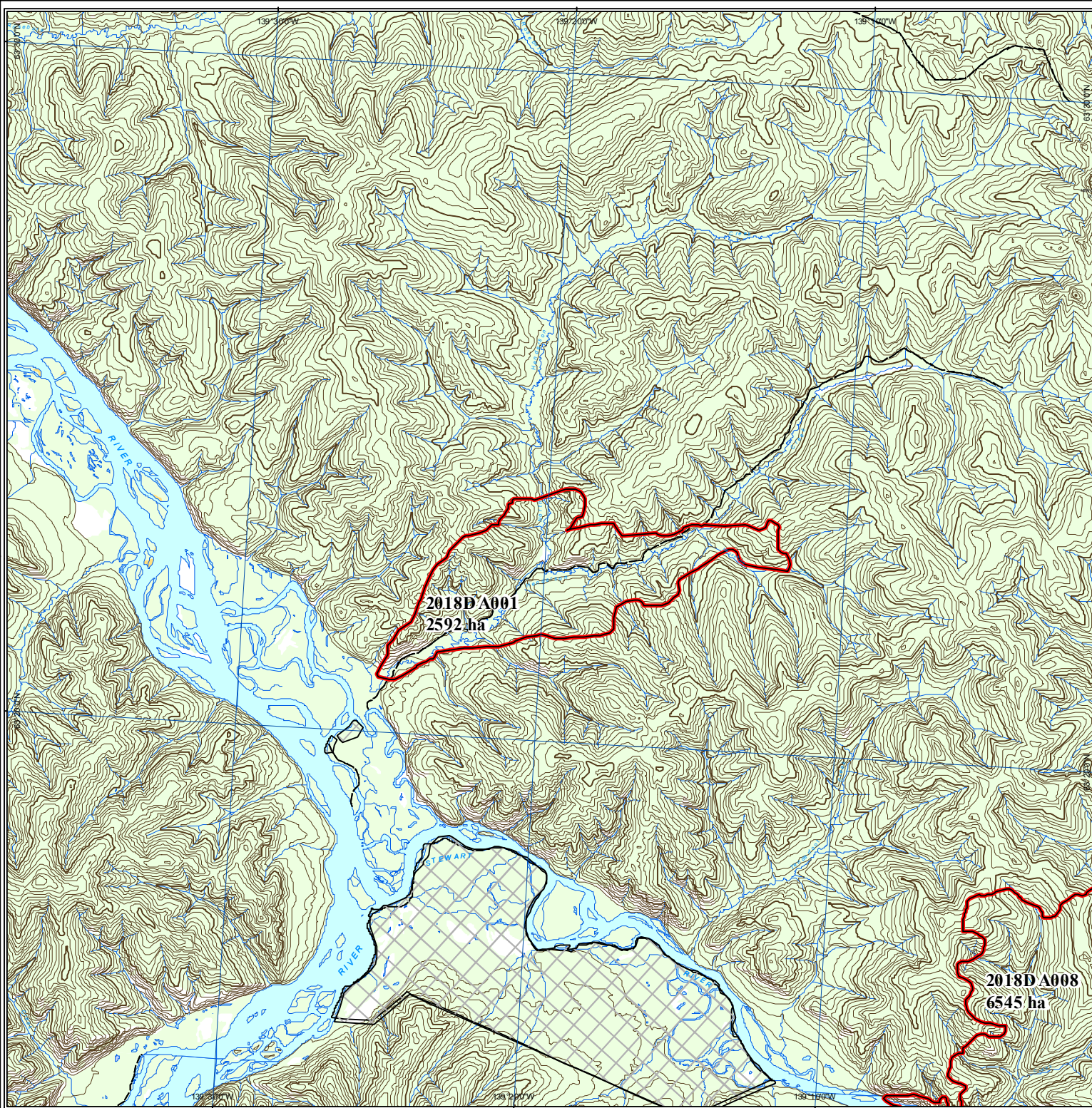
## DIGITAL DATA SOURCES AND DISCLAIMERS

National Topographic DataBase (NTDB) compiled by Natural Resources Canada at 1:250,000. Reproduced under license from Her Majesty the Queen in Right of Canada, with permission of Natural Resources Canada.



Map Compiled By:  
Wildland Fire Management  
Department of Community Services  
Government of Yukon

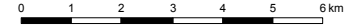
Map Date: 4/9/2019



# 2018 Yukon Wildland Fires

DA-003

Scale 1:150,000 (NAD83)



Albers equal area projection (standard parallels: 61°40' & 68°00')

## Legend

- Fire Perimeter
- First Nation Settlement Land
- Lake
- Wetland
- Rivers & Streams
- Yukon Border

## Access

- Highway
- Main Road (2wd)
- Secondary Road (2wd)
- Limited-use road (4wd)
- Trail
- Cut line

## 1:250,000 NTS Map Series Numbers

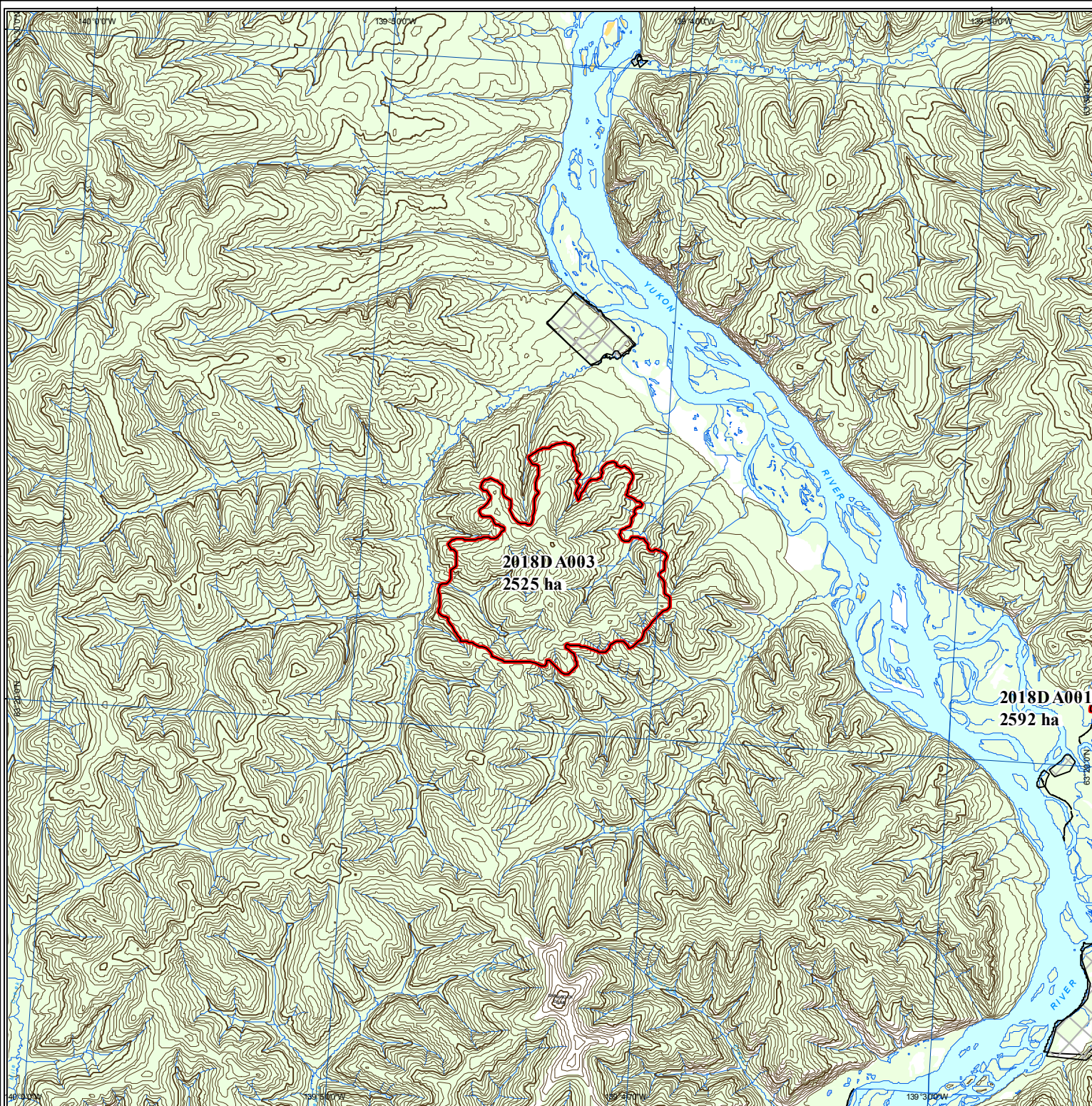
116C	116B	116A
115N	115O	115P
115K	115J	115I

## DIGITAL DATA SOURCES AND DISCLAIMERS

National Topographic DataBase (NTDB) compiled by Natural Resources Canada at 1:250,000. Reproduced under license from Her Majesty the Queen in Right of Canada, with permission of Natural Resources Canada.

Map Compiled By:  
Wildland Fire Management  
Department of Community Services  
Government of Yukon

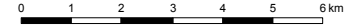
Map Date: 4/9/2019



# 2018 Yukon Wildland Fires

## DA-008

Scale 1:150,000 (NAD83)



Albers equal area projection (standard parallels: 61°40' & 68°00')

### Legend

- Fire Perimeter
- First Nation Settlement Land
- Lake
- Wetland
- Rivers & Streams
- Yukon Border

### Access

- Highway
- Main Road (2wd)
- Secondary Road (2wd)
- Limited-use road (4wd)
- Trail
- Cut line

### 1:250,000 NTS Map Series Numbers

116C	116B	116A
115N	115O	115P
115K	115J	115I

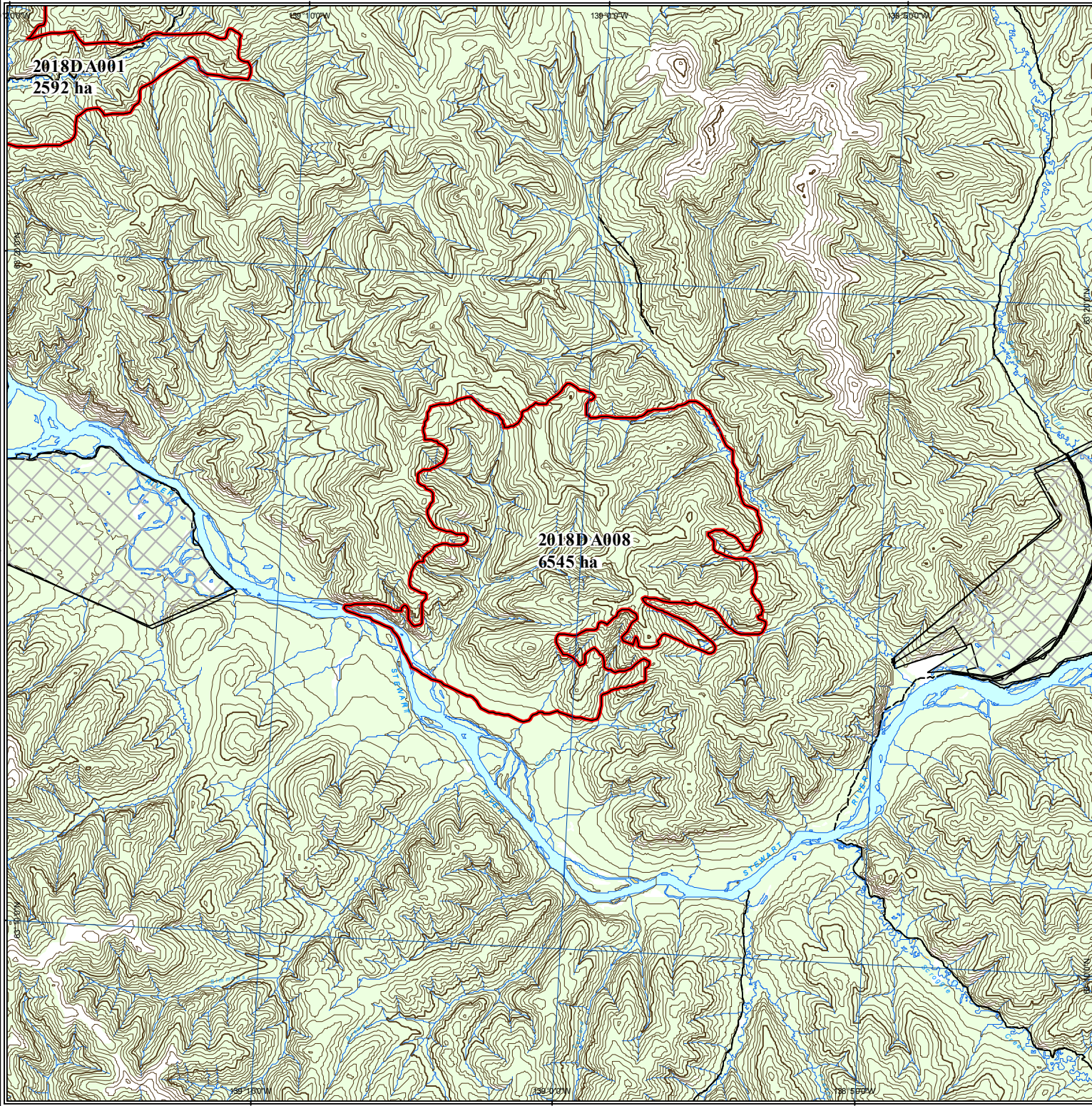
### DIGITAL DATA SOURCES AND DISCLAIMERS

National Topographic DataBase (NTDB) compiled by Natural Resources Canada at 1:250,000. Reproduced under license from Her Majesty the Queen in Right of Canada, with permission of Natural Resources Canada.



Map Compiled By:  
Wildland Fire Management  
Department of Community Services  
Government of Yukon

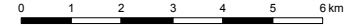
Map Date: 4/9/2019



# 2018 Yukon Wildland Fires

DA-009

Scale 1:150,000 (NAD83)



Albers equal area projection (standard parallels: 61°40' & 68°00')

## Legend

- Fire Perimeter
- First Nation Settlement Land
- Lake
- Wetland
- Rivers & Streams
- Yukon Border

## Access

- Highway
- Main Road (2wd)
- Secondary Road (2wd)
- Limited-use road (4wd)
- Trail
- Cut line

## 1:250,000 NTS Map Series Numbers

	116F	116G	116H
	116C	116B	116A
	115N	115O	115P
	115K	115J	115I

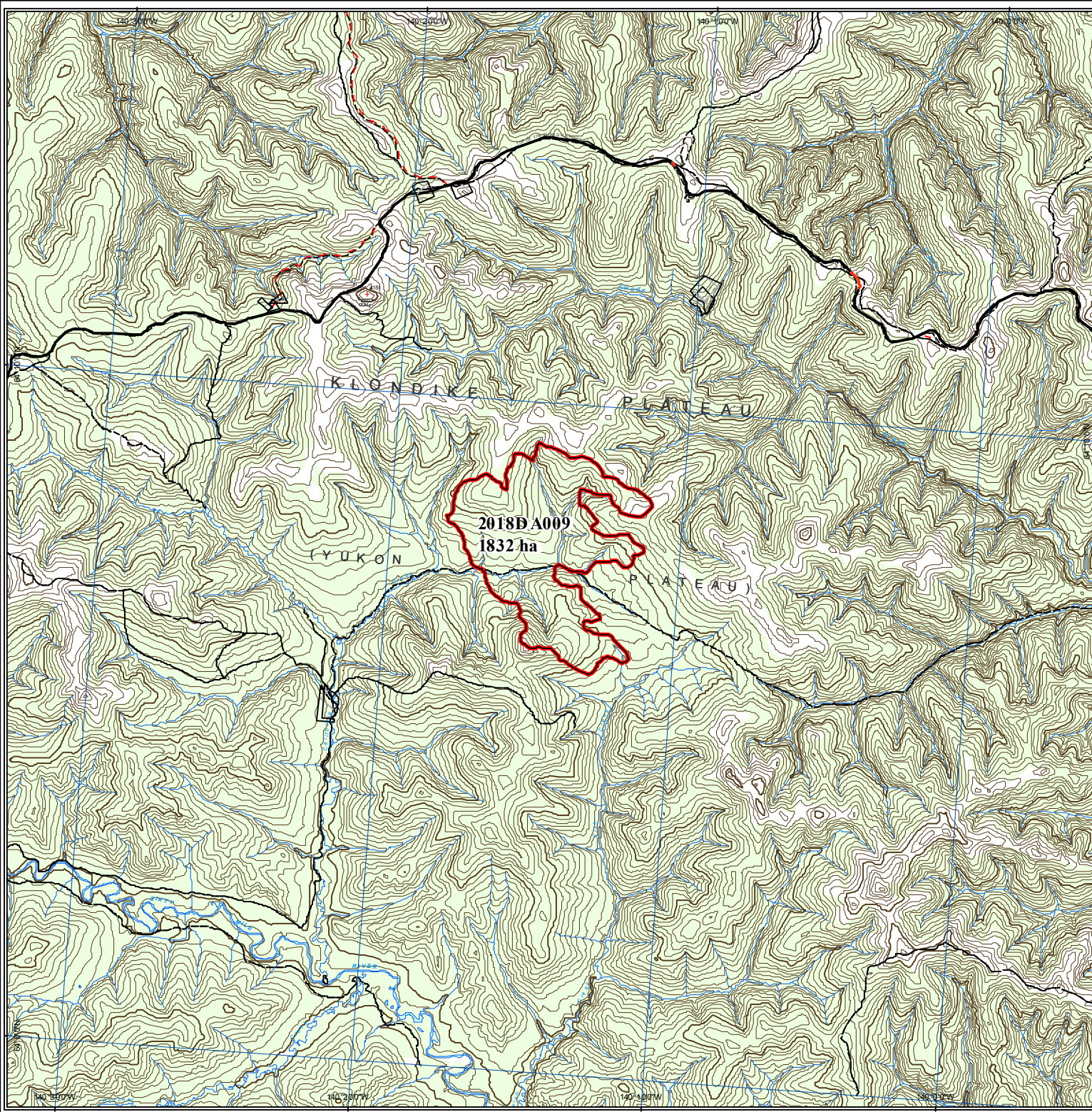
## DIGITAL DATA SOURCES AND DISCLAIMERS

National Topographic DataBase (NTDB) compiled by Natural Resources Canada at 1:250,000. Reproduced under license from Her Majesty the Queen in Right of Canada, with permission of Natural Resources Canada.



Map Compiled By:  
Wildland Fire Management  
Department of Community Services  
Government of Yukon

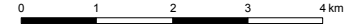
Map Date: 4/9/2019



# 2018 Yukon Wildland Fires

## DA-010

Scale 1:100,000 (NAD83)



Albers equal area projection (standard parallels: 61°40' & 68°00')

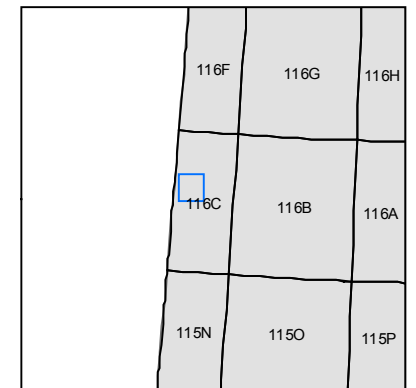
### Legend

- Fire Perimeter
- First Nation Settlement Land
- Lake
- Wetland
- Rivers & Streams
- Yukon Border

### Access

- Highway
- Main Road (2wd)
- Secondary Road (2wd)
- Limited-use road (4wd)
- Trail
- Cut line

### 1:250,000 NTS Map Series Numbers

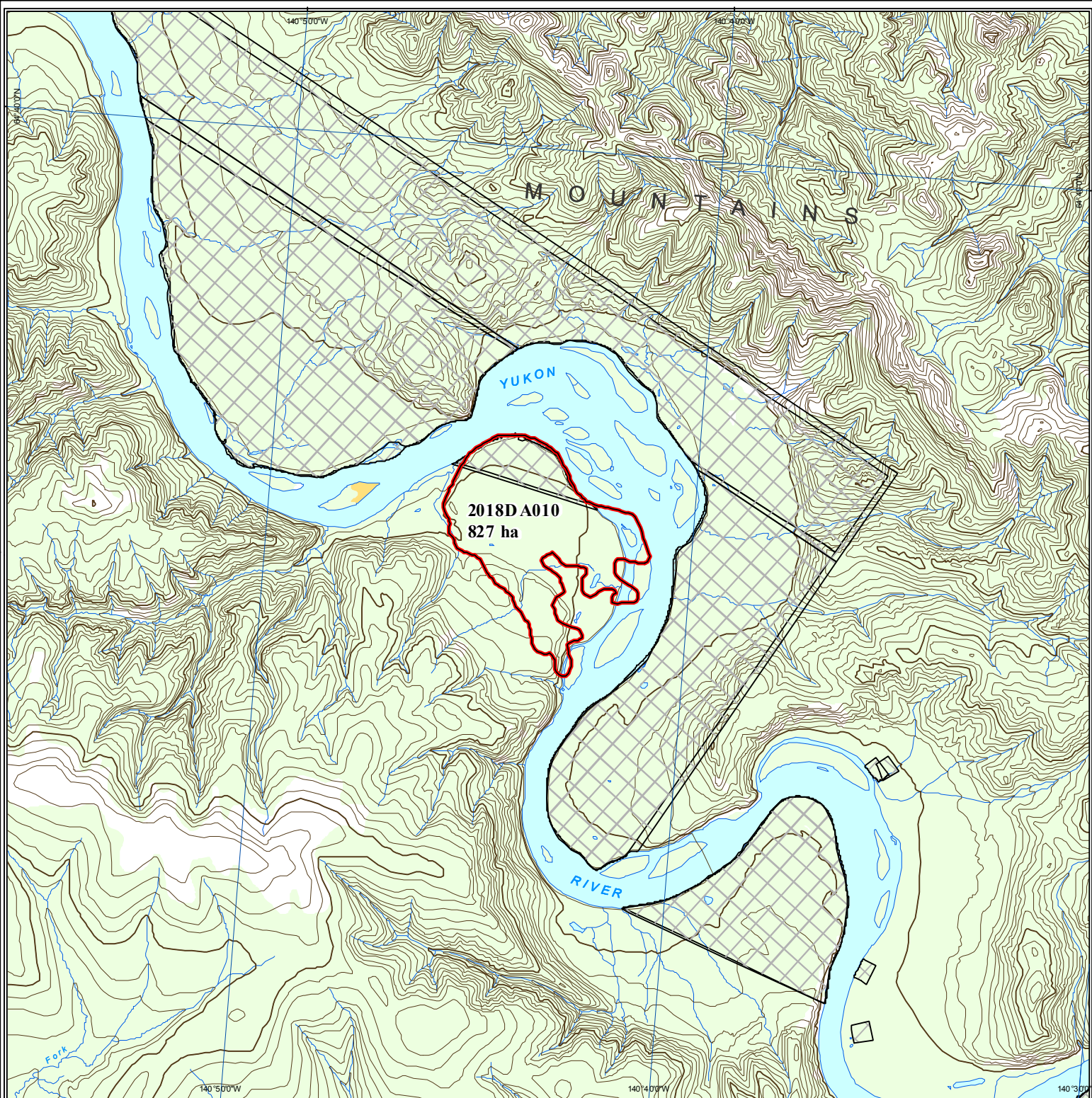


### DIGITAL DATA SOURCES AND DISCLAIMERS

National Topographic DataBase (NTDB) compiled by Natural Resources Canada at 1:250,000. Reproduced under license from Her Majesty the Queen in Right of Canada, with permission of Natural Resources Canada.

Map Compiled By:  
Wildland Fire Management  
Department of Community Services  
Government of Yukon

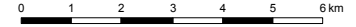
Map Date: 4/9/2019



# 2018 Yukon Wildland Fires

## MA-002

Scale 1:150,000 (NAD83)



Albers equal area projection (standard parallels: 61°40' & 68°00')

### Legend

- Fire Perimeter
- First Nation Settlement Land
- Lake
- Wetland
- Rivers & Streams
- Yukon Border

### Access

- Highway
- Main Road (2wd)
- Secondary Road (2wd)
- Limited-use road (4wd)
- Trail
- Cut line

### 1:250,000 NTS Map Series Numbers

116A	106D	106C	106B
115P	105M	105N	
115I	105L	105K	

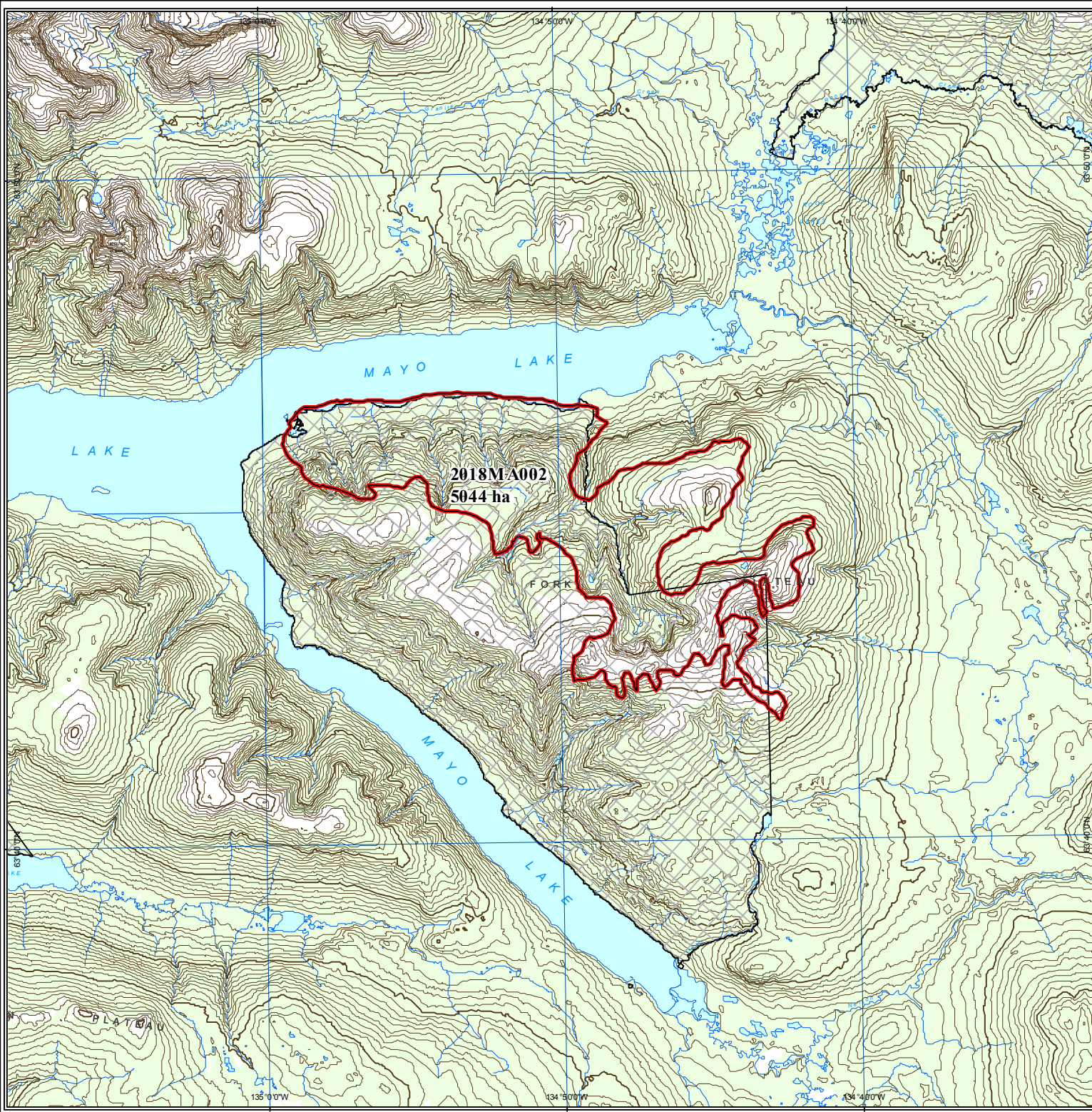
### DIGITAL DATA SOURCES AND DISCLAIMERS

National Topographic DataBase (NTDB) compiled by Natural Resources Canada at 1:250,000. Reproduced under license from Her Majesty the Queen in Right of Canada, with permission of Natural Resources Canada.



Map Compiled By:  
Wildland Fire Management  
Department of Community Services  
Government of Yukon

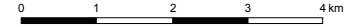
Map Date: 4/9/2019



# 2018 Yukon Wildland Fires

## OC-001

Scale 1:100,000 (NAD83)



Albers equal area projection (standard parallels: 61°40' & 68°00')

### Legend

- Fire Perimeter
- First Nation Settlement Land
- Lake
- Wetland
- Rivers & Streams
- Yukon Border

### Access

- Highway
- Main Road (2wd)
- Secondary Road (2wd)
- Limited-use road (4wd)
- Trail
- Cut line

### 1:250,000 NTS Map Series Numbers

116N	116O	116P
116K	116J	116I
116F	116G	116H

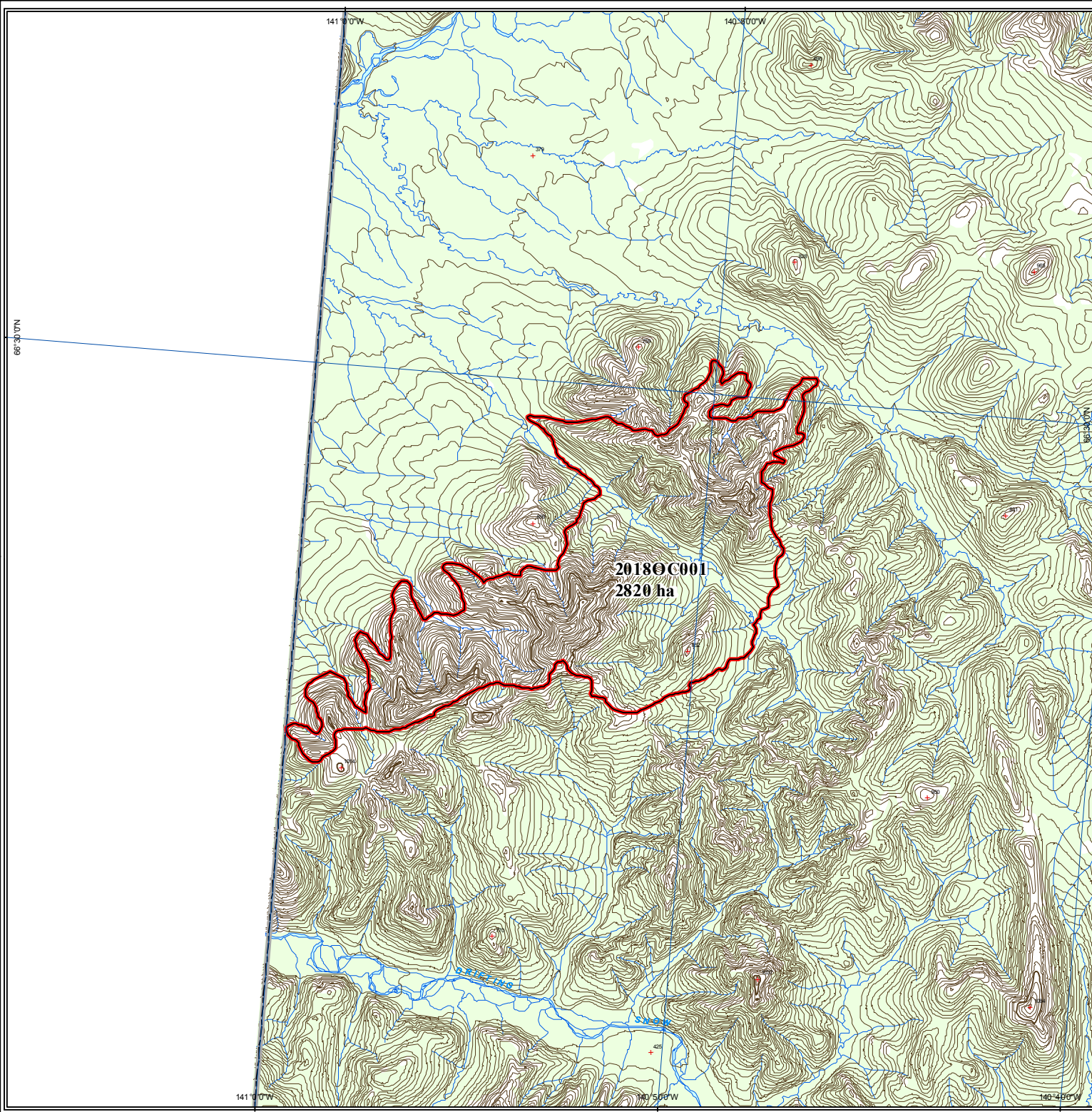
### DIGITAL DATA SOURCES AND DISCLAIMERS

National Topographic DataBase (NTDB) compiled by Natural Resources Canada at 1:250,000. Reproduced under license from Her Majesty the Queen in Right of Canada, with permission of Natural Resources Canada.



Map Compiled By:  
Wildland Fire Management  
Department of Community Services  
Government of Yukon

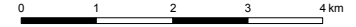
Map Date: 4/9/2019



# 2018 Yukon Wildland Fires

OC-002

Scale 1:100,000 (NAD83)



Albers equal area projection (standard parallels: 61°40' & 68°00')

## Legend

- Fire Perimeter
- First Nation Settlement Land
- Lake
- Wetland
- Rivers & Streams
- Yukon Border

## Access

- Highway
- Main Road (2wd)
- Secondary Road (2wd)
- Limited-use road (4wd)
- Trail
- Cut line

## 1:250,000 NTS Map Series Numbers

116N	116O	116P	106M
116K	116J	116I	106L
116F	116G	116H	106E
116C	116B	116A	106D

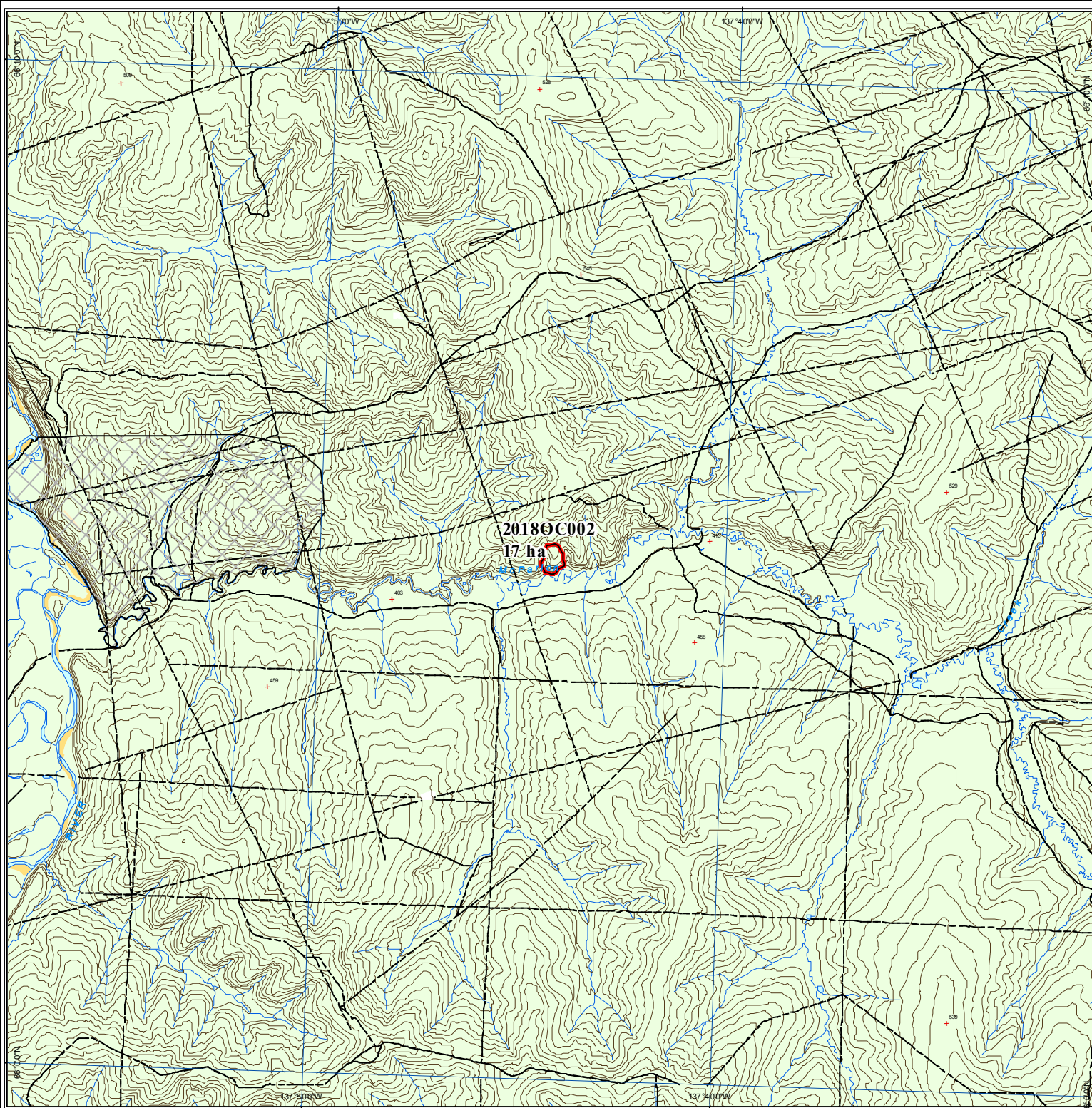
## DIGITAL DATA SOURCES AND DISCLAIMERS

National Topographic DataBase (NTDB) compiled by Natural Resources Canada at 1:250,000. Reproduced under license from Her Majesty the Queen in Right of Canada, with permission of Natural Resources Canada.



Map Compiled By:  
Wildland Fire Management  
Department of Community Services  
Government of Yukon

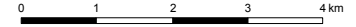
Map Date: 4/9/2019



# 2018 Yukon Wildland Fires

## OC-004

Scale 1:100,000 (NAD83)



Albers equal area projection (standard parallels: 61°40' & 68°00')

### Legend

- Fire Perimeter
- First Nation Settlement Land
- Lake
- Wetland
- Rivers & Streams
- Yukon Border

### Access

- Highway
- Main Road (2wd)
- Secondary Road (2wd)
- Limited-use road (4wd)
- Trail
- Cut line

### 1:250,000 NTS Map Series Numbers

116O	116P	106M	106N
116J	116I	106L	106K
116H	106E	106F	

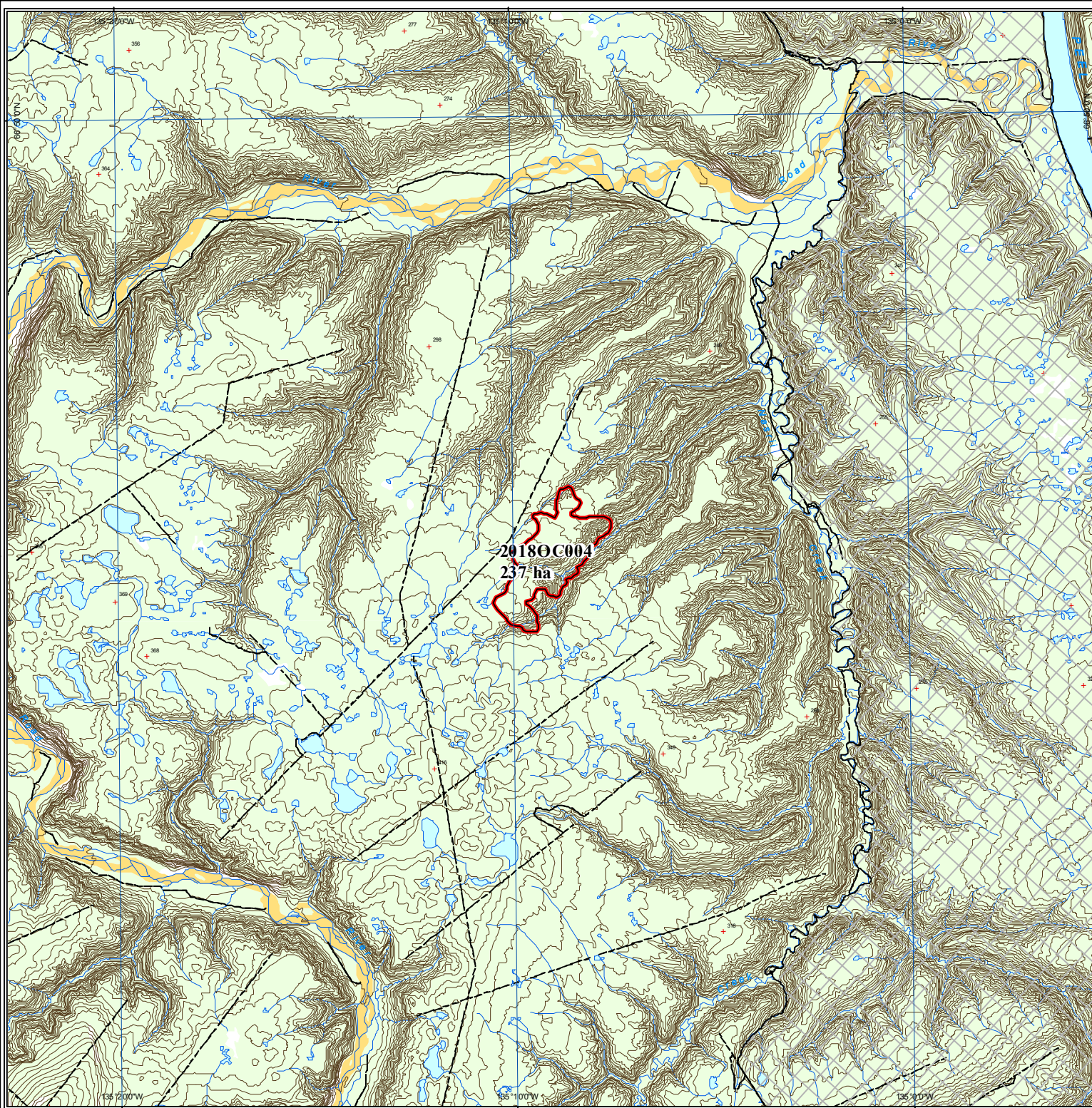
### DIGITAL DATA SOURCES AND DISCLAIMERS

National Topographic DataBase (NTDB) compiled by Natural Resources Canada at 1:250,000. Reproduced under license from Her Majesty the Queen in Right of Canada, with permission of Natural Resources Canada.



Map Compiled By:  
Wildland Fire Management  
Department of Community Services  
Government of Yukon

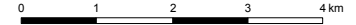
Map Date: 4/9/2019



# 2018 Yukon Wildland Fires

## OC-005

Scale 1:100,000 (NAD83)



Albers equal area projection (standard parallels: 61°40' & 68°00')

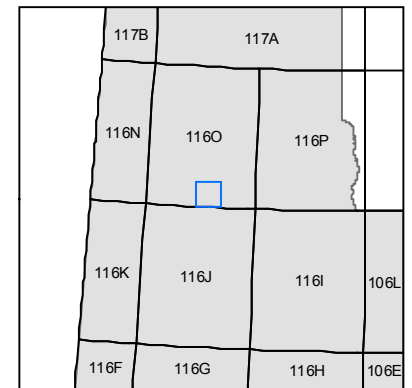
### Legend

- Fire Perimeter
- First Nation Settlement Land
- Lake
- Wetland
- Rivers & Streams
- Yukon Border

### Access

- Highway
- Main Road (2wd)
- Secondary Road (2wd)
- Limited-use road (4wd)
- Trail
- Cut line

### 1:250,000 NTS Map Series Numbers



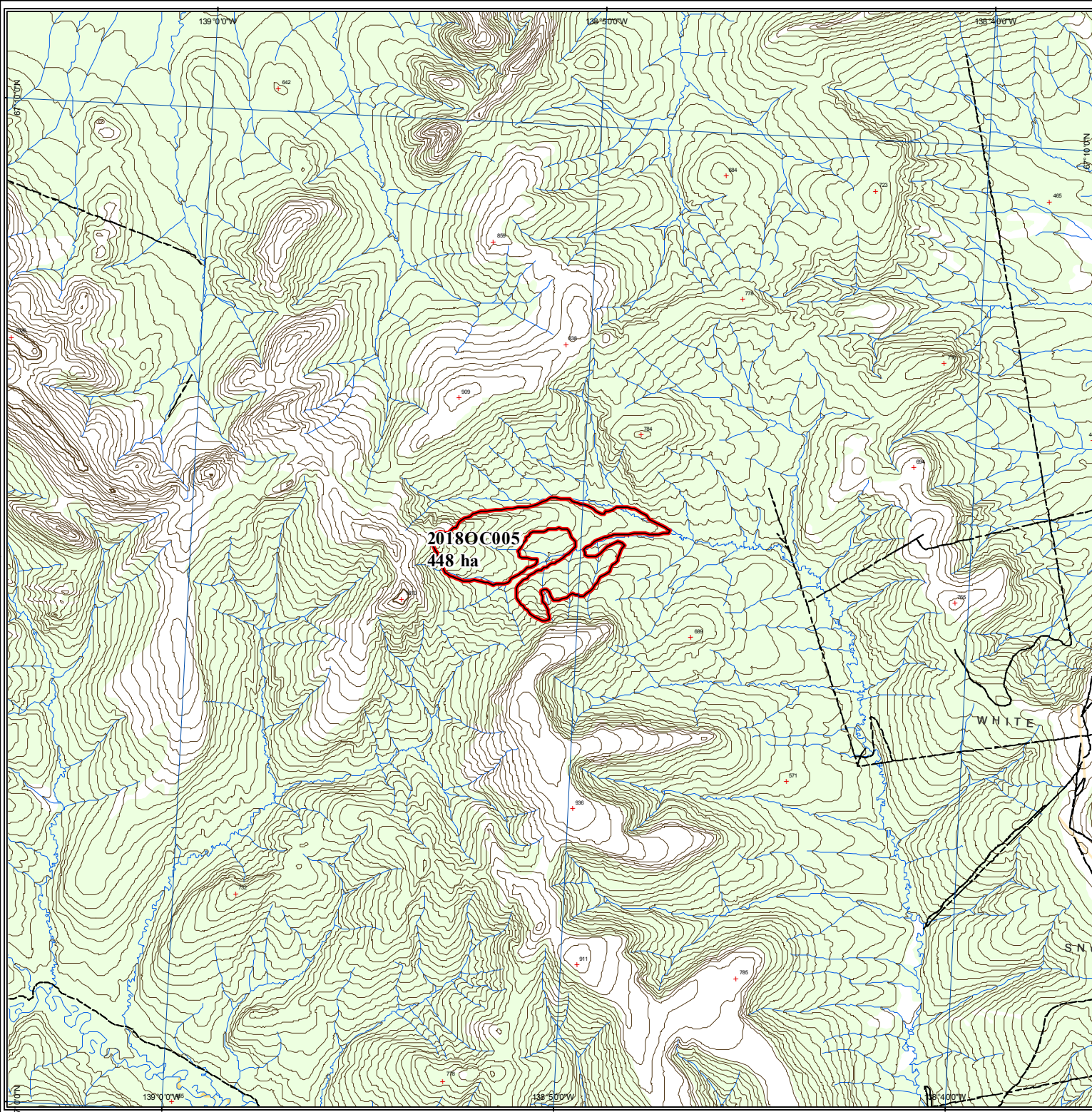
### DIGITAL DATA SOURCES AND DISCLAIMERS

National Topographic DataBase (NTDB) compiled by Natural Resources Canada at 1:250,000. Reproduced under license from Her Majesty the Queen in Right of Canada, with permission of Natural Resources Canada.



Map Compiled By:  
Wildland Fire Management  
Department of Community Services  
Government of Yukon

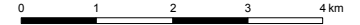
Map Date: 4/9/2019



# 2018 Yukon Wildland Fires

## OC-006

Scale 1:100,000 (NAD83)



Albers equal area projection (standard parallels: 61°40' & 68°00')

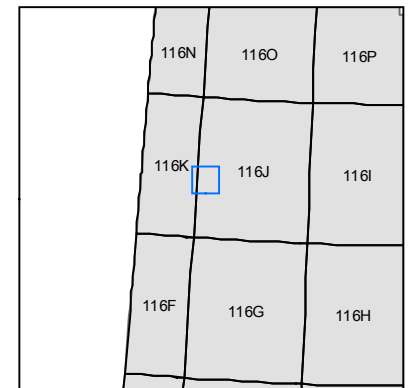
### Legend

- Fire Perimeter
- First Nation Settlement Land
- Lake
- Wetland
- Rivers & Streams
- Yukon Border

### Access

- Highway
- Main Road (2wd)
- Secondary Road (2wd)
- Limited-use road (4wd)
- Trail
- Cut line

### 1:250,000 NTS Map Series Numbers

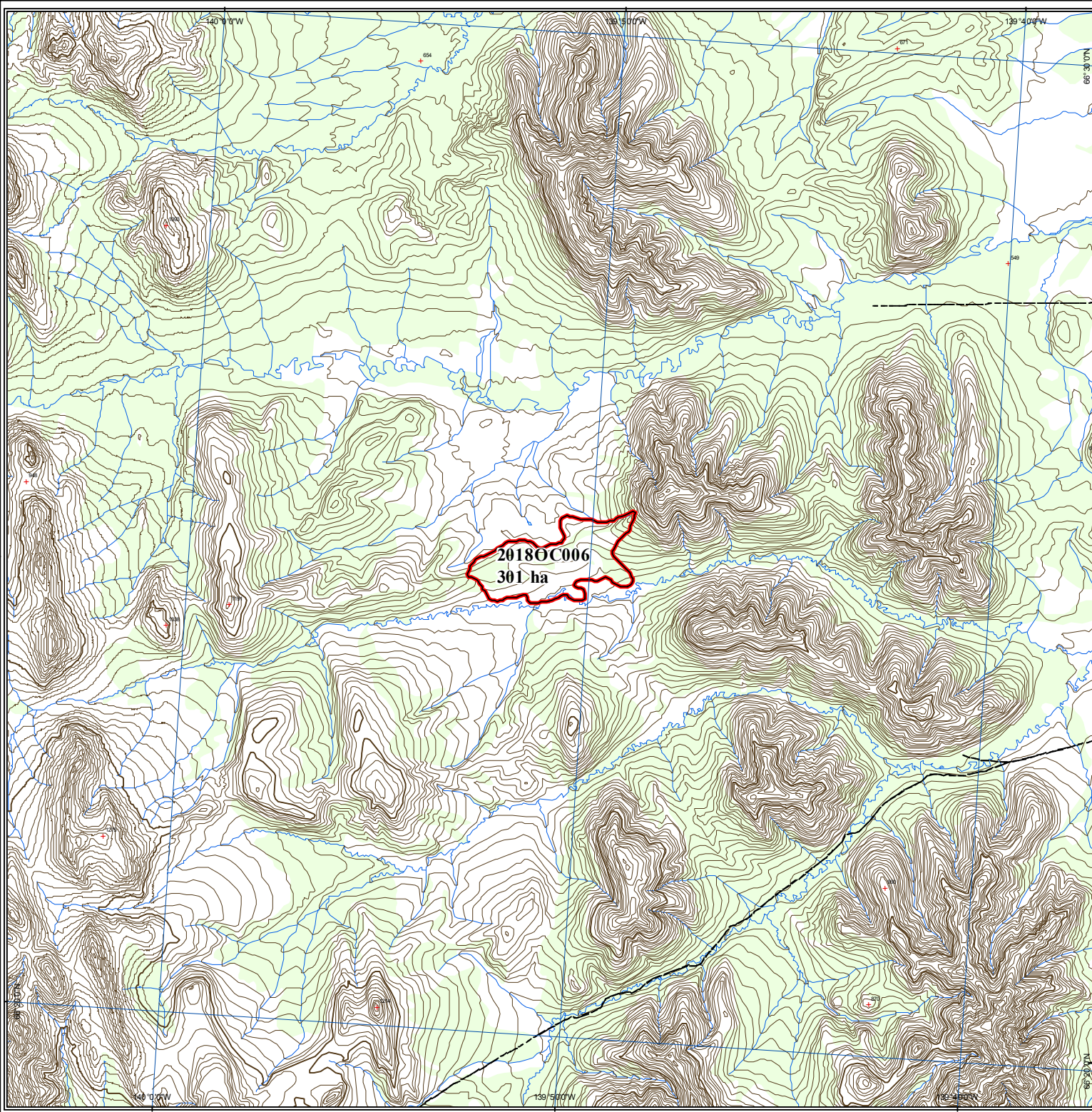


### DIGITAL DATA SOURCES AND DISCLAIMERS

National Topographic DataBase (NTDB) compiled by Natural Resources Canada at 1:250,000. Reproduced under license from Her Majesty the Queen in Right of Canada, with permission of Natural Resources Canada.

Map Compiled By:  
Wildland Fire Management  
Department of Community Services  
Government of Yukon

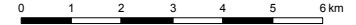
Map Date: 4/9/2019



# 2018 Yukon Wildland Fires

RR-001

Scale 1:150,000 (NAD83)



Albers equal area projection (standard parallels: 61°40' & 68°00')

## Legend

- Fire Perimeter
- First Nation Settlement Land
- Lake
- Wetland
- Rivers & Streams
- Yukon Border

## Access

- Highway
- Main Road (2wd)
- Secondary Road (2wd)
- Limited-use road (4wd)
- Trail
- Cut line

## 1:250,000 NTS Map Series Numbers

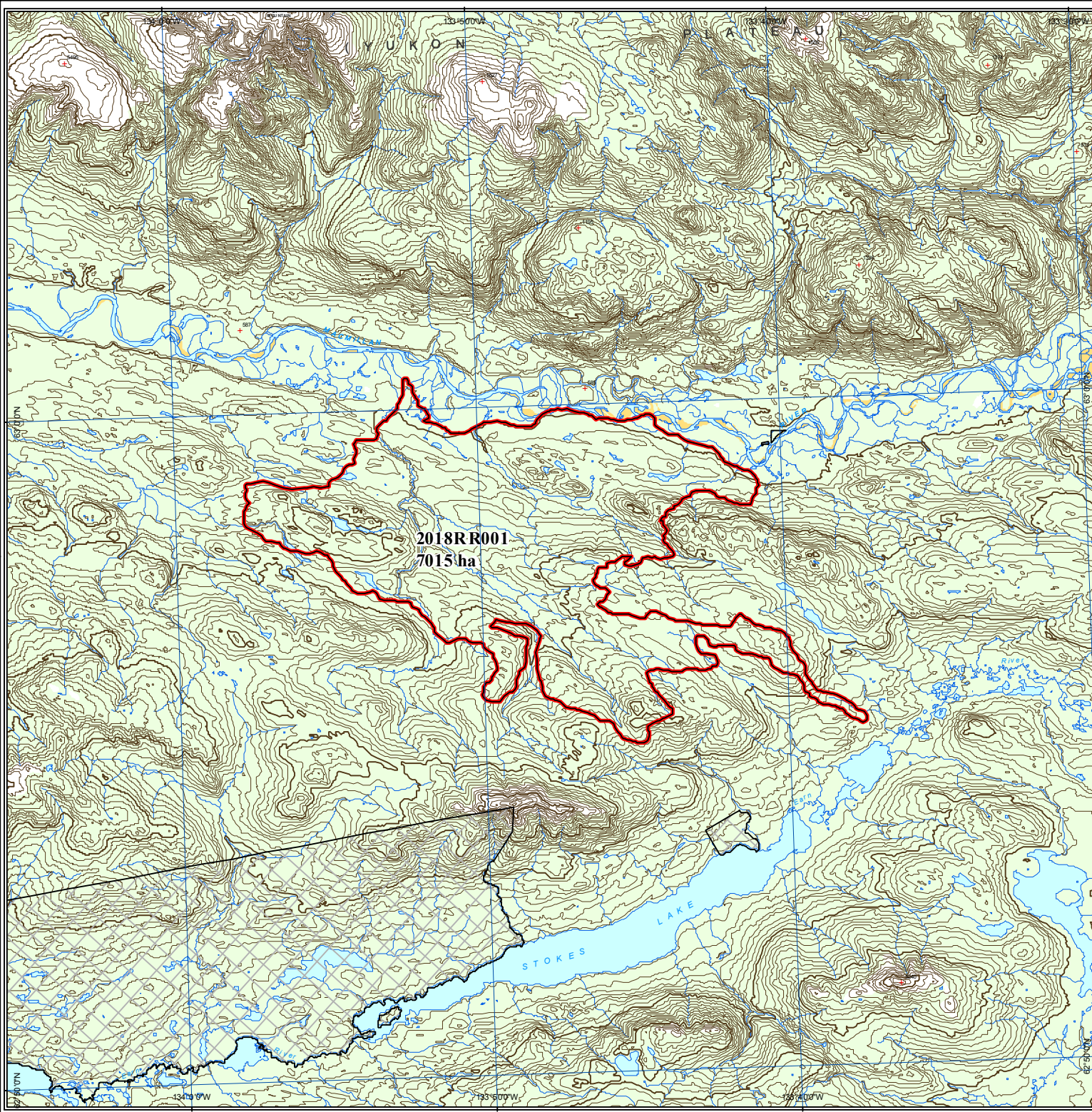
116A	106D	106C	106B
115P	105M	105N	105O
115I	105L	105K	105J
115H	105E	105F	105G

## DIGITAL DATA SOURCES AND DISCLAIMERS

National Topographic DataBase (NTDB) compiled by Natural Resources Canada at 1:250,000. Reproduced under license from Her Majesty the Queen in Right of Canada, with permission of Natural Resources Canada.

Map Compiled By:  
Wildland Fire Management  
Department of Community Services  
Government of Yukon

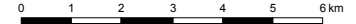
Map Date: 4/9/2019



# 2018 Yukon Wildland Fires

TE-001

Scale 1:150,000 (NAD83)



Albers equal area projection (standard parallels: 61°40' & 68°00')

## Legend

- Fire Perimeter
- First Nation Settlement Land
- Lake
- Wetland
- Rivers & Streams
- Yukon Border

## Access

- Highway
- Main Road (2wd)
- Secondary Road (2wd)
- Limited-use road (4wd)
- Trail
- Cut line

## 1:250,000 NTS Map Series Numbers

105F	105G	105H
105C	105B	105A
104N	104O	104P

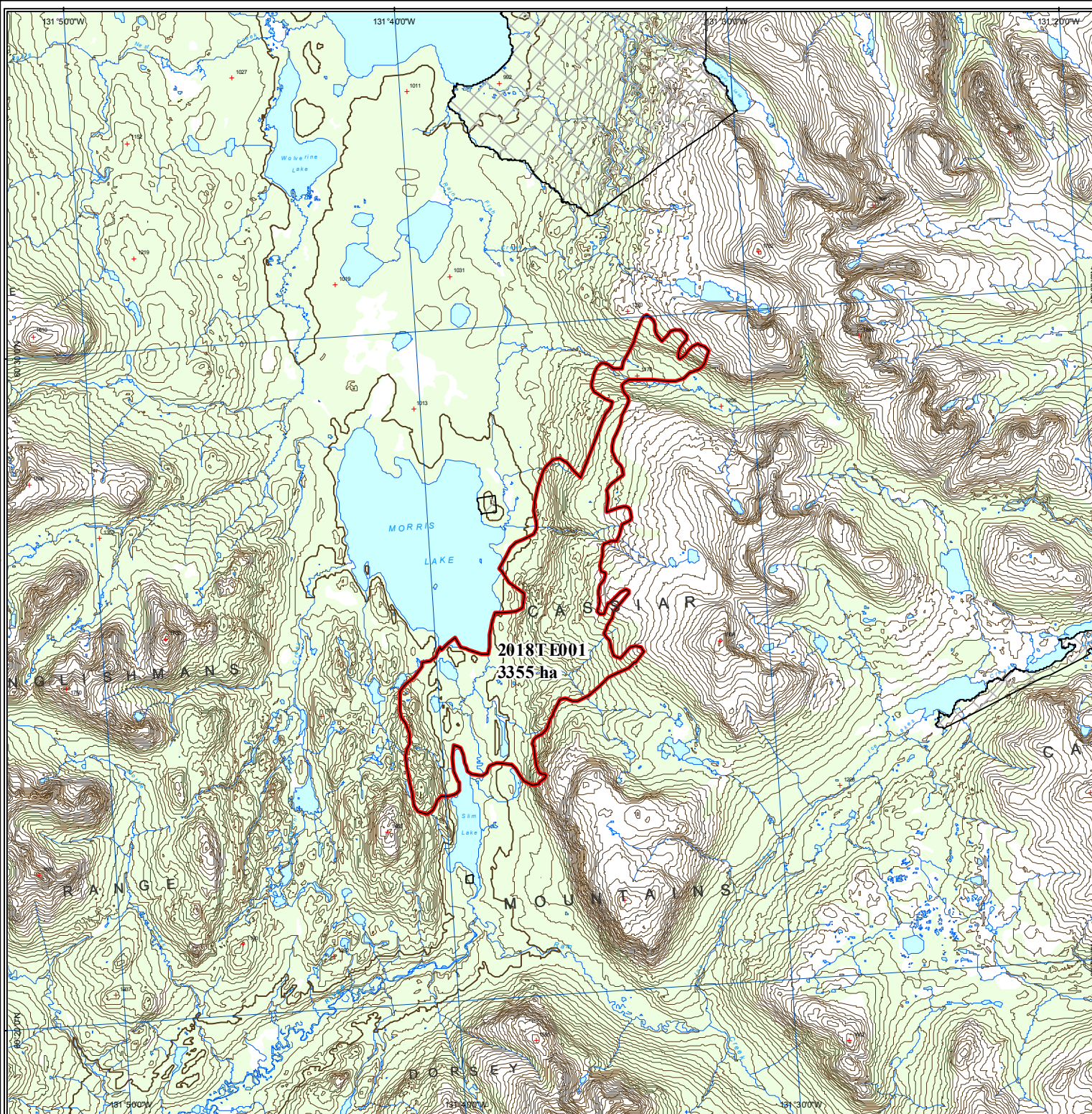
## DIGITAL DATA SOURCES AND DISCLAIMERS

National Topographic DataBase (NTDB) compiled by Natural Resources Canada at 1:250,000. Reproduced under license from Her Majesty the Queen in Right of Canada, with permission of Natural Resources Canada.



Map Compiled By:  
Wildland Fire Management  
Department of Community Services  
Government of Yukon

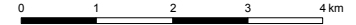
Map Date: 4/9/2019



# 2018 Yukon Wildland Fires

## TE-002

Scale 1:100,000 (NAD83)



Albers equal area projection (standard parallels: 61°40' & 68°00')

### Legend

- Fire Perimeter
- First Nation Settlement Land
- Lake
- Wetland
- Rivers & Streams
- Yukon Border

### Access

- Highway
- Main Road (2wd)
- Secondary Road (2wd)
- Limited-use road (4wd)
- Trail
- Cut line

### 1:250,000 NTS Map Series Numbers

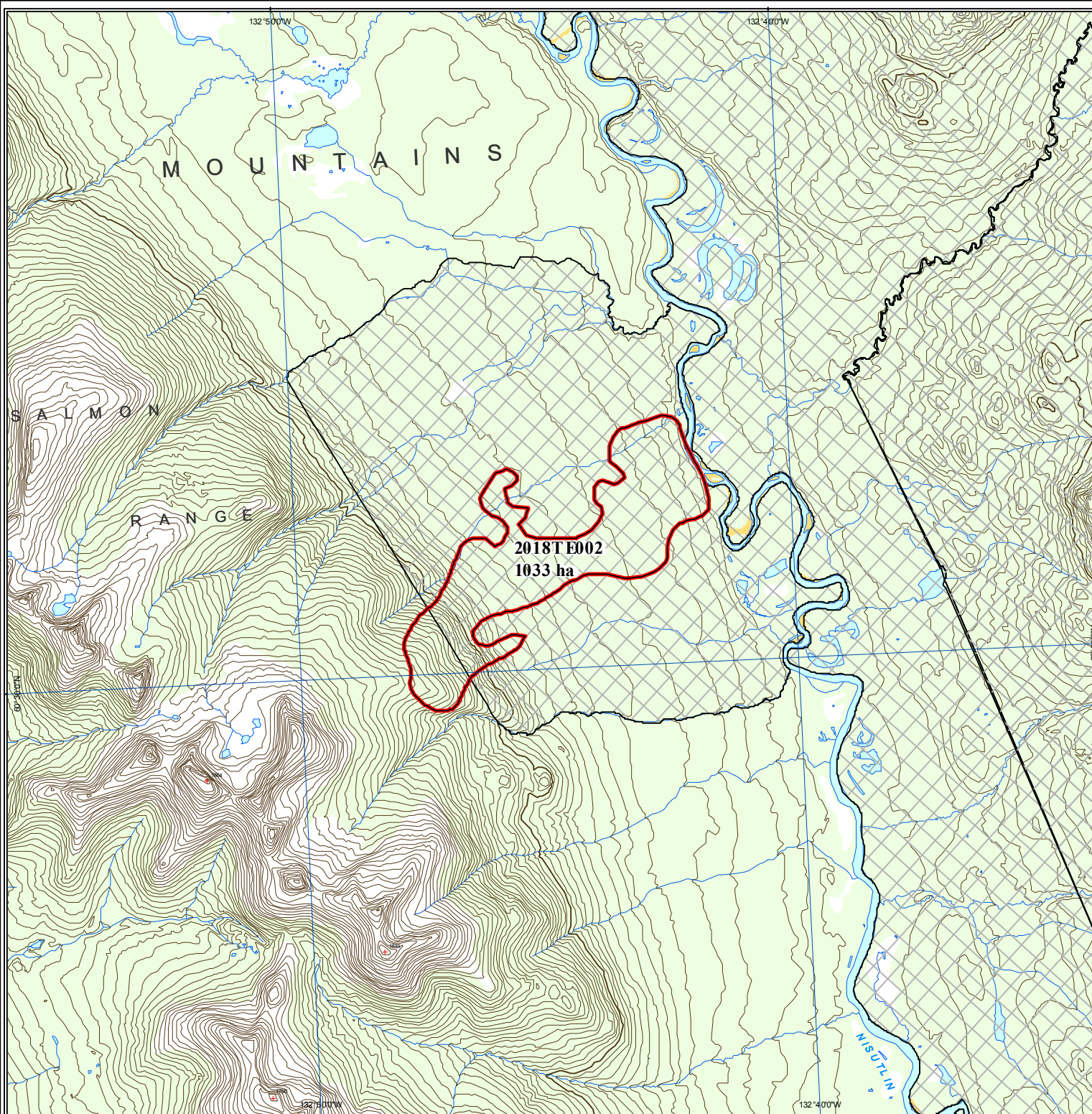
105E	105F	105G
105D	105C	105B
104M	104N	104O

### DIGITAL DATA SOURCES AND DISCLAIMERS

National Topographic DataBase (NTDB) compiled by Natural Resources Canada at 1:250,000. Reproduced under license from Her Majesty the Queen in Right of Canada, with permission of Natural Resources Canada.

Map Compiled By:  
Wildland Fire Management  
Department of Community Services  
Government of Yukon

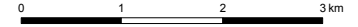
Map Date: 4/9/2019



# 2018 Yukon Wildland Fires

TE-003

Scale 1:75,000 (NAD83)



Albers equal area projection (standard parallels: 61°40' & 68°00')

## Legend

- Fire Perimeter
- First Nation Settlement Land
- Lake
- Wetland
- Rivers & Streams
- Yukon Border

## Access

- Highway
- Main Road (2wd)
- Secondary Road (2wd)
- Limited-use road (4wd)
- Trail
- Cut line

## 1:250,000 NTS Map Series Numbers

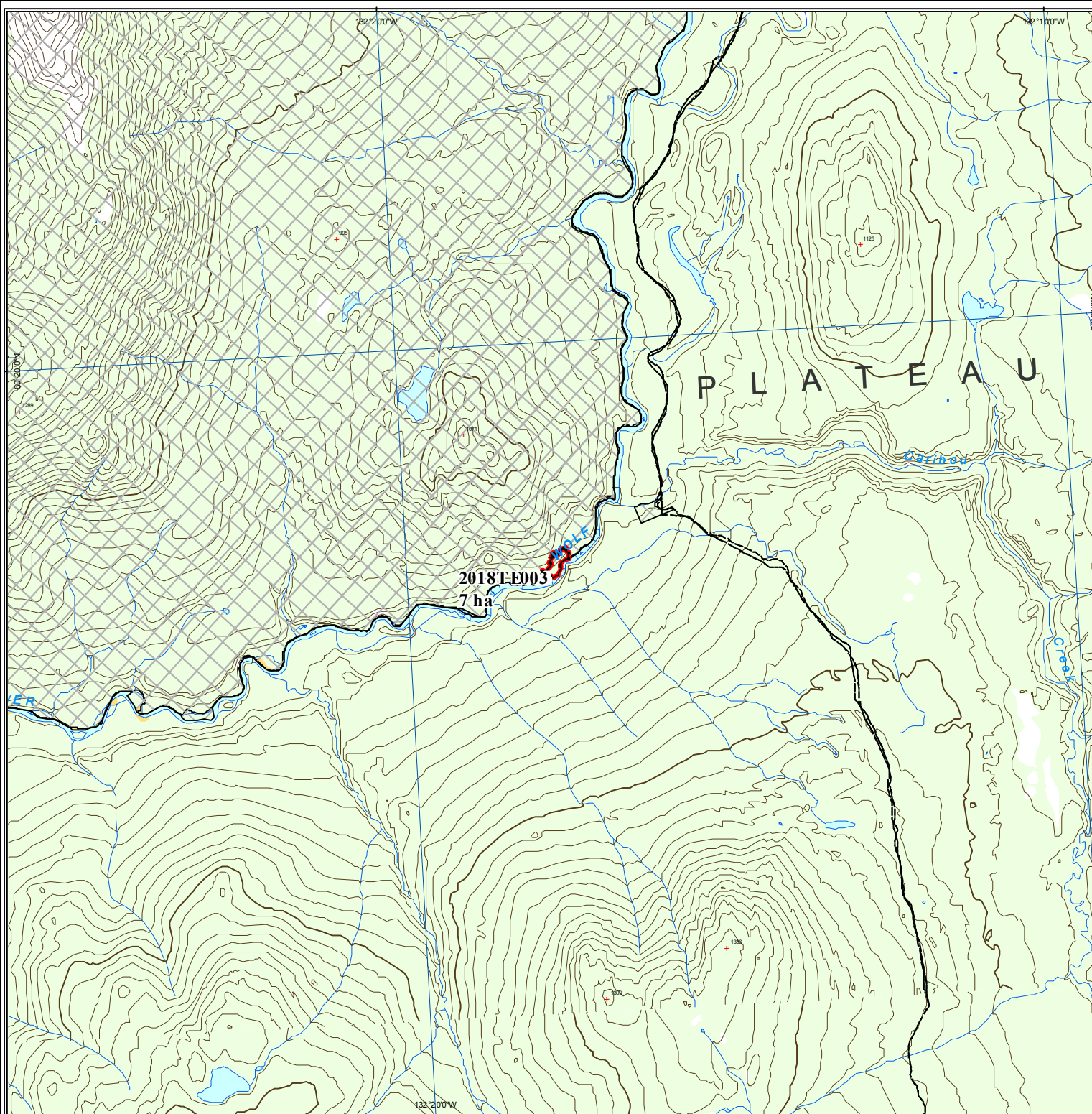
105E	105F	105G	105H
105D	105C	105B	105A
104M	104N	104O	

## DIGITAL DATA SOURCES AND DISCLAIMERS

National Topographic DataBase (NTDB) compiled by Natural Resources Canada at 1:250,000. Reproduced under license from Her Majesty the Queen in Right of Canada, with permission of Natural Resources Canada.

Map Compiled By:  
Wildland Fire Management  
Department of Community Services  
Government of Yukon

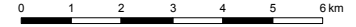
Map Date: 4/9/2019



# 2018 Yukon Wildland Fires

## WL-002

Scale 1:150,000 (NAD83)



Albers equal area projection (standard parallels: 61°40' & 68°00')

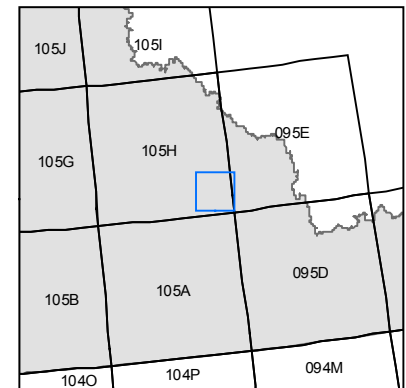
### Legend

- Fire Perimeter
- First Nation Settlement Land
- Lake
- Wetland
- Rivers & Streams
- Yukon Border

### Access

- Highway
- Main Road (2wd)
- Secondary Road (2wd)
- Limited-use road (4wd)
- Trail
- Cut line

### 1:250,000 NTS Map Series Numbers



2018WL002  
6570 ha

### DIGITAL DATA SOURCES AND DISCLAIMERS

National Topographic DataBase (NTDB) compiled by Natural Resources Canada at 1:250,000. Reproduced under license from Her Majesty the Queen in Right of Canada, with permission of Natural Resources Canada.



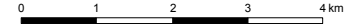
Map Compiled By:  
Wildland Fire Management  
Department of Community Services  
Government of Yukon

Map Date: 4/9/2019

# 2018 Yukon Wildland Fires

## WL-003

Scale 1:100,000 (NAD83)



Albers equal area projection (standard parallels: 61°40' & 68°00')

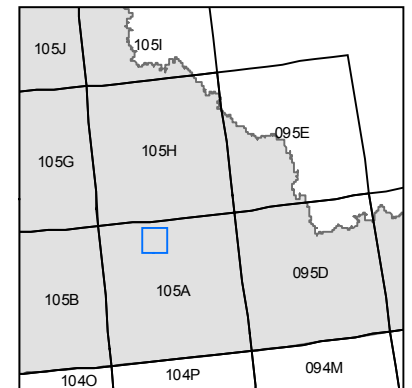
### Legend

- Fire Perimeter
- First Nation Settlement Land
- Lake
- Wetland
- Rivers & Streams
- Yukon Border

### Access

- Highway
- Main Road (2wd)
- Secondary Road (2wd)
- Limited-use road (4wd)
- Trail
- Cut line

### 1:250,000 NTS Map Series Numbers



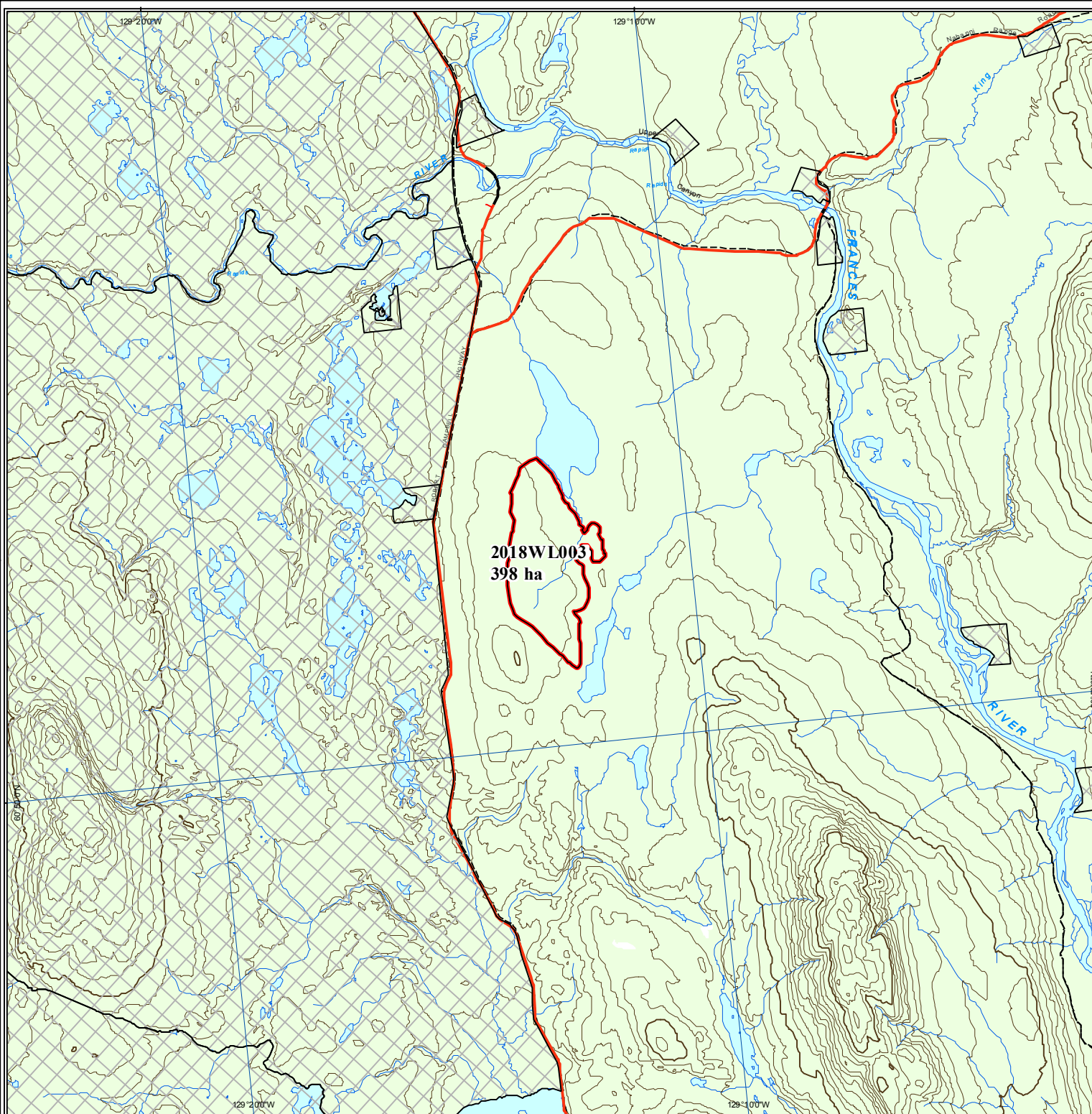
### DIGITAL DATA SOURCES AND DISCLAIMERS

National Topographic DataBase (NTDB) compiled by Natural Resources Canada at 1:250,000. Reproduced under license from Her Majesty the Queen in Right of Canada, with permission of Natural Resources Canada.



Map Compiled By:  
Wildland Fire Management  
Department of Community Services  
Government of Yukon

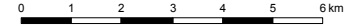
Map Date: 4/9/2019



# 2018 Yukon Wildland Fires

## WL-004

Scale 1:150,000 (NAD83)



Albers equal area projection (standard parallels: 61°40' & 68°00')

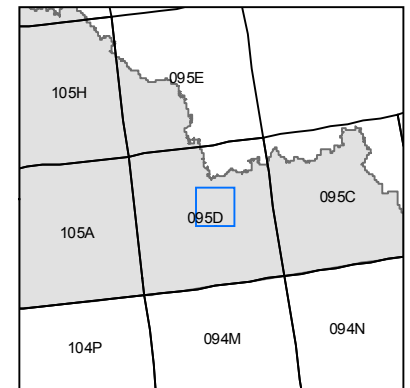
### Legend

- Fire Perimeter
- First Nation Settlement Land
- Lake
- Wetland
- Rivers & Streams
- Yukon Border

### Access

- Highway
- Main Road (2wd)
- Secondary Road (2wd)
- Limited-use road (4wd)
- Trail
- Cut line

### 1:250,000 NTS Map Series Numbers

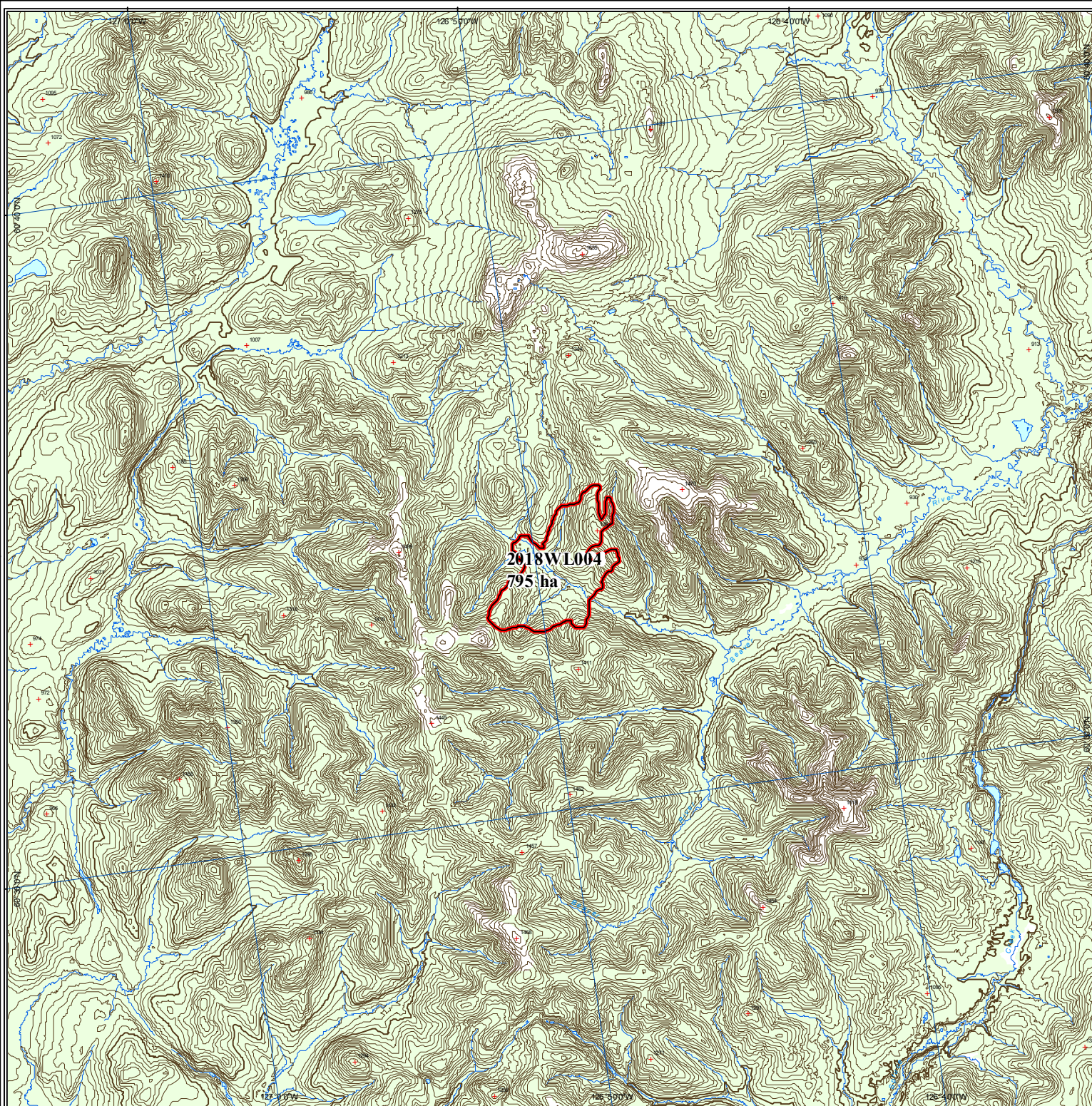


### DIGITAL DATA SOURCES AND DISCLAIMERS

National Topographic DataBase (NTDB) compiled by Natural Resources Canada at 1:250,000. Reproduced under license from Her Majesty the Queen in Right of Canada, with permission of Natural Resources Canada.

Map Compiled By:  
Wildland Fire Management  
Department of Community Services  
Government of Yukon

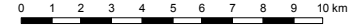
Map Date: 4/9/2019



# 2018 Yukon Wildland Fires

## WL-005

Scale 1:250,000 (NAD83)



Albers equal area projection (standard parallels: 61°40' & 68°00')

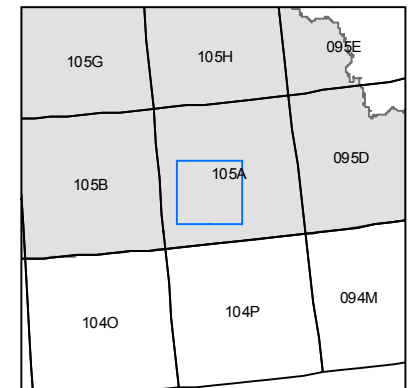
### Legend

- Fire Perimeter
- First Nation Settlement Land
- Lake
- Wetland
- Rivers & Streams
- Yukon Border

### Access

- Highway
- Main Road (2wd)
- Secondary Road (2wd)
- Limited-use road (4wd)
- Trail
- Cut line

### 1:250,000 NTS Map Series Numbers



### DIGITAL DATA SOURCES AND DISCLAIMERS

National Topographic DataBase (NTDB) compiled by Natural Resources Canada at 1:250,000. Reproduced under license from Her Majesty the Queen in Right of Canada, with permission of Natural Resources Canada.



Map Compiled By:  
Wildland Fire Management  
Department of Community Services  
Government of Yukon

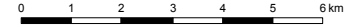
Map Date: 4/9/2019



# 2018 Yukon Wildland Fires

## WL-006

Scale 1:150,000 (NAD83)



Albers equal area projection (standard parallels: 61°40' & 68°00')

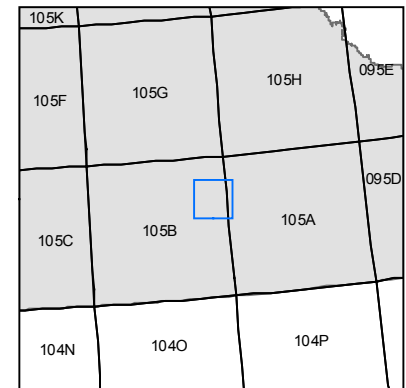
### Legend

- Fire Perimeter
- First Nation Settlement Land
- Lake
- Wetland
- Rivers & Streams
- Yukon Border

### Access

- Highway
- Main Road (2wd)
- Secondary Road (2wd)
- Limited-use road (4wd)
- Trail
- Cut line

### 1:250,000 NTS Map Series Numbers



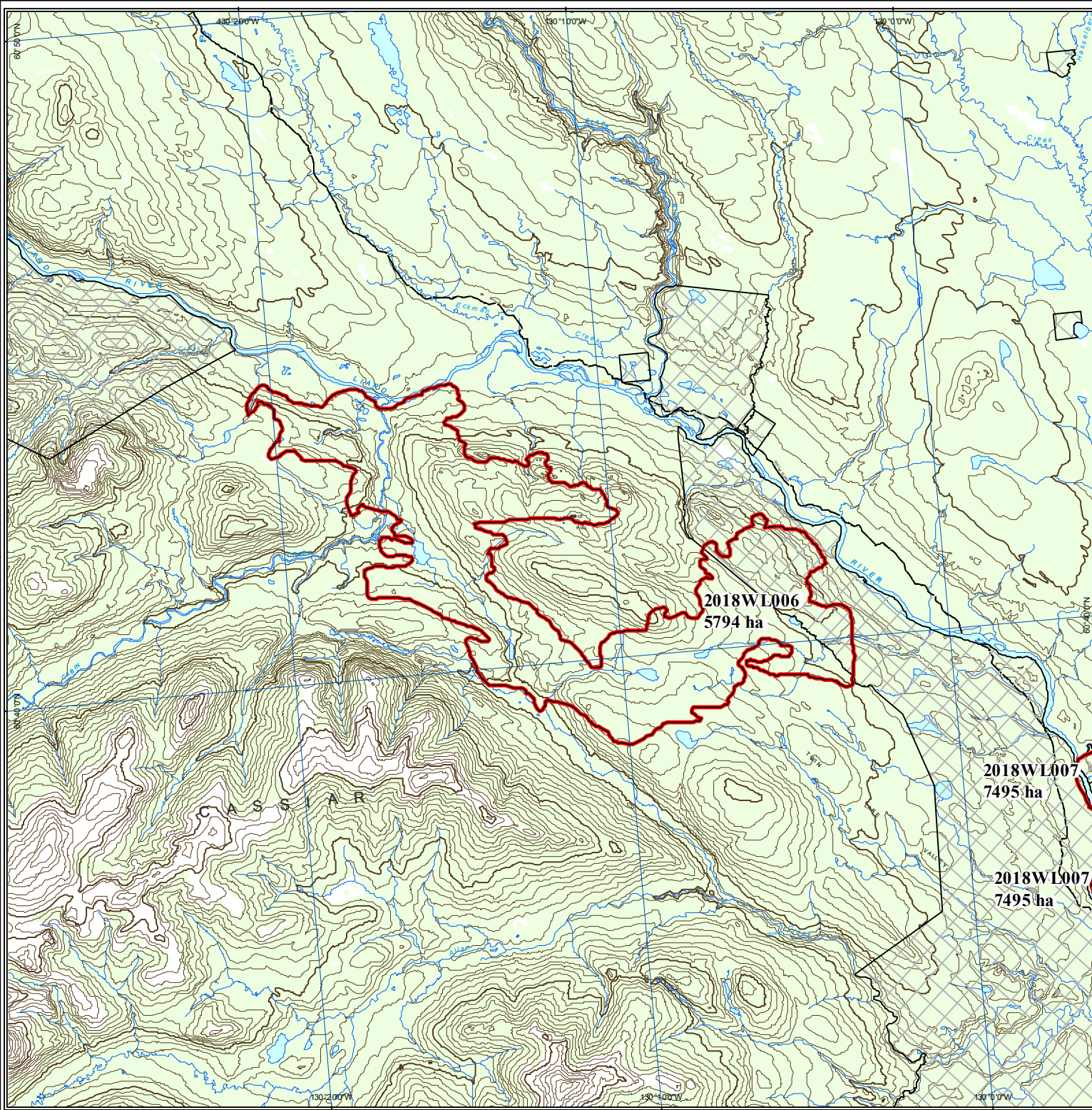
### DIGITAL DATA SOURCES AND DISCLAIMERS

National Topographic DataBase (NTDB) compiled by Natural Resources Canada at 1:250,000. Reproduced under license from Her Majesty the Queen in Right of Canada, with permission of Natural Resources Canada.



Map Compiled By:  
Wildland Fire Management  
Department of Community Services  
Government of Yukon

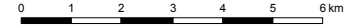
Map Date: 4/9/2019



# 2018 Yukon Wildland Fires

## WL-007

Scale 1:150,000 (NAD83)



Albers equal area projection (standard parallels: 61°40' & 68°00')

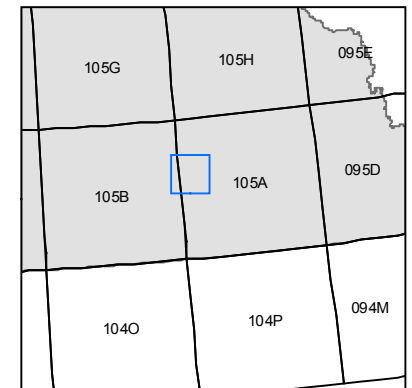
### Legend

- Fire Perimeter
- First Nation Settlement Land
- Lake
- Wetland
- Rivers & Streams
- Yukon Border

### Access

- Highway
- Main Road (2wd)
- Secondary Road (2wd)
- Limited-use road (4wd)
- Trail
- Cut line

### 1:250,000 NTS Map Series Numbers

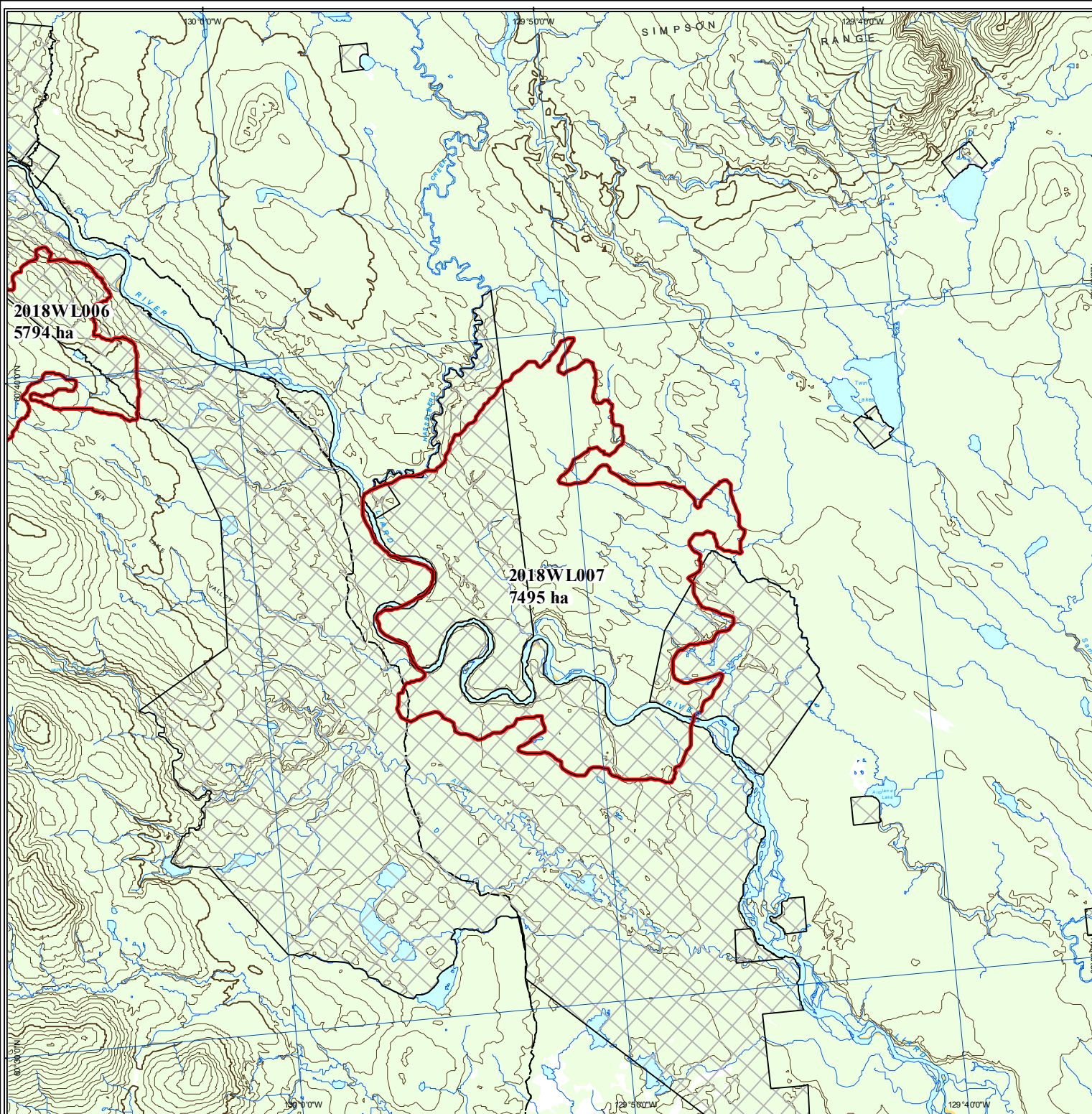


### DIGITAL DATA SOURCES AND DISCLAIMERS

National Topographic DataBase (NTDB) compiled by Natural Resources Canada at 1:250,000. Reproduced under license from Her Majesty the Queen in Right of Canada, with permission of Natural Resources Canada.

Map Compiled By:  
Wildland Fire Management  
Department of Community Services  
Government of Yukon

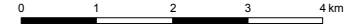
Map Date: 4/9/2019



# 2018 Yukon Wildland Fires

## WL-012

Scale 1:100,000 (NAD83)



Albers equal area projection (standard parallels: 61°40' & 68°00')

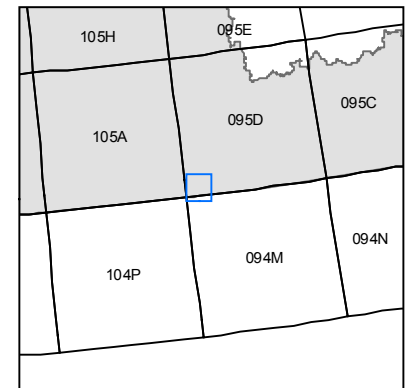
### Legend

- Fire Perimeter
- First Nation Settlement Land
- Lake
- Wetland
- Rivers & Streams
- Yukon Border

### Access

- Highway
- Main Road (2wd)
- Secondary Road (2wd)
- Limited-use road (4wd)
- Trail
- Cut line

### 1:250,000 NTS Map Series Numbers

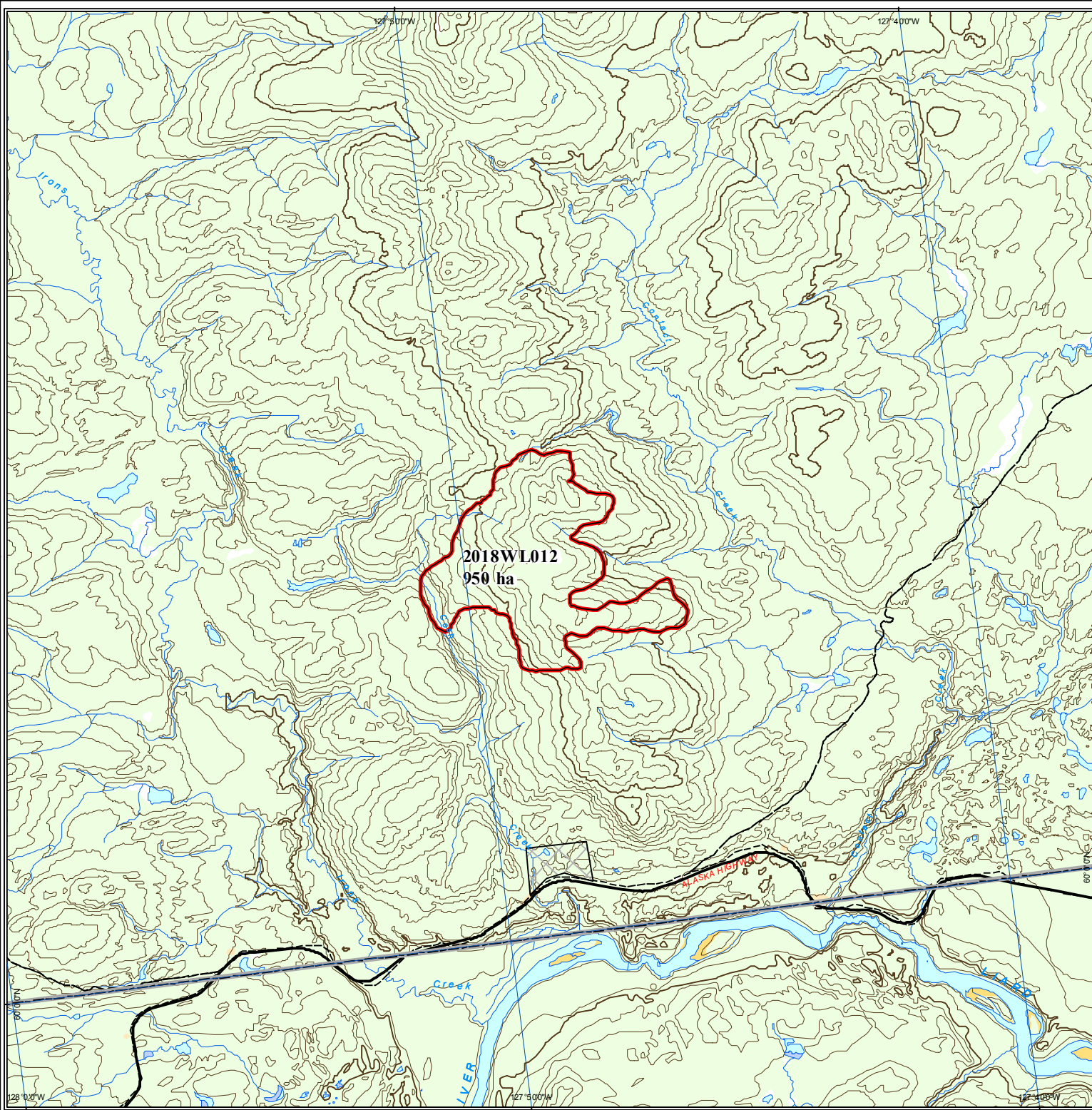


### DIGITAL DATA SOURCES AND DISCLAIMERS

National Topographic DataBase (NTDB) compiled by Natural Resources Canada at 1:250,000. Reproduced under license from Her Majesty the Queen in Right of Canada, with permission of Natural Resources Canada.

Map Compiled By:  
Wildland Fire Management  
Department of Community Services  
Government of Yukon

Map Date: 4/9/2019



# 2018 Yukon Wildland Fires

## XY-009

Scale 1:200,000 (NAD83)



Albers equal area projection (standard parallels: 61°40' & 68°00')

### Legend

- Fire Perimeter
  - First Nation Settlement Land
  - Lake
  - Wetland
  - Rivers & Streams
  - Yukon Border
- #### Access
- Highway
  - Main Road (2wd)
  - Secondary Road (2wd)
  - Limited-use road (4wd)
  - Trail
  - Cut line

### 1:250,000 NTS Map Series Numbers

115I	105L	105K
115H	105E	105F
115A	105D	105C
		104N

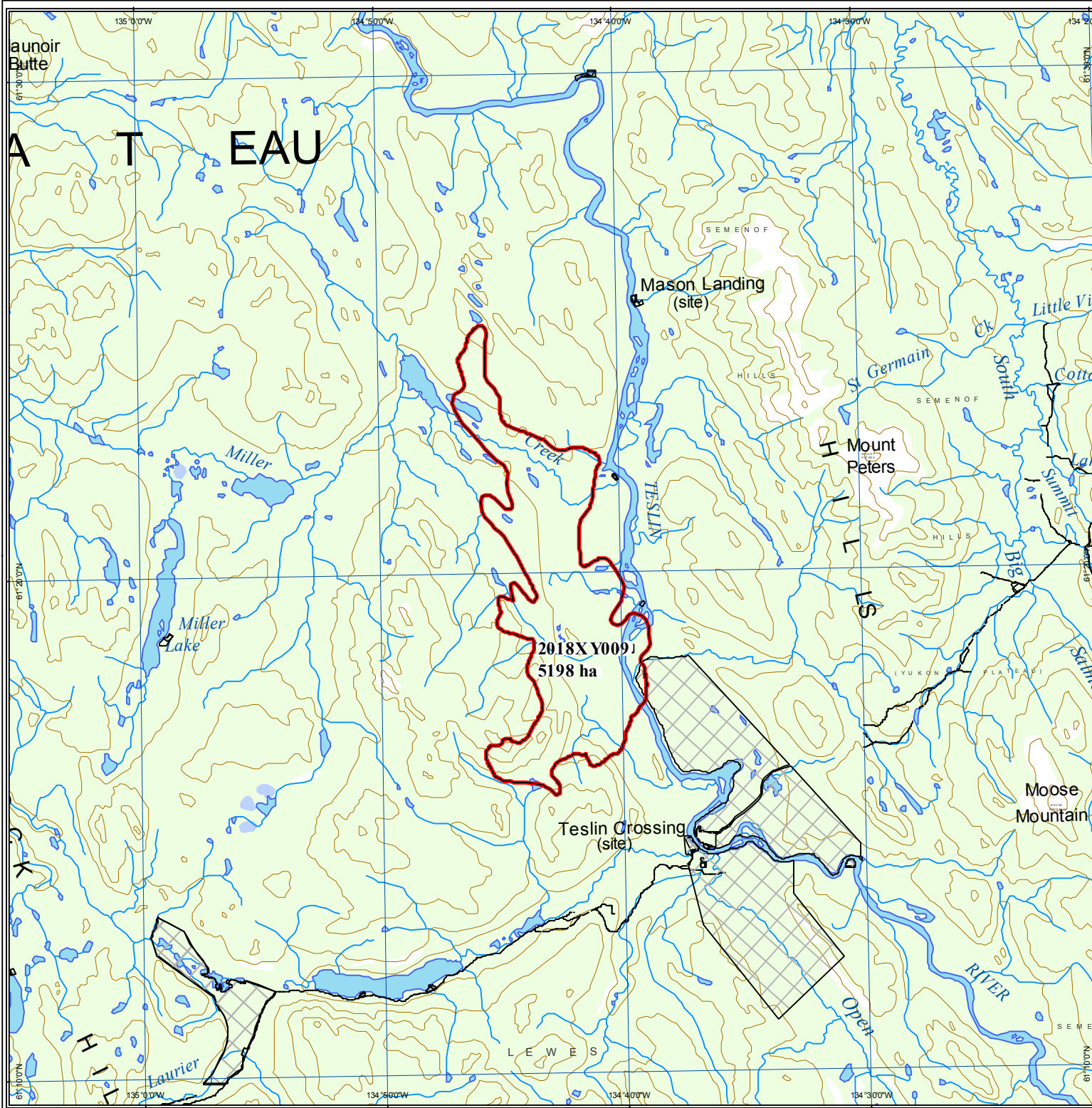
### DIGITAL DATA SOURCES AND DISCLAIMERS

National Topographic DataBase (NTDB) compiled by Natural Resources Canada at 1:250,000. Reproduced under license from Her Majesty the Queen in Right of Canada, with permission of Natural Resources Canada.



Map Compiled By:  
Wildland Fire Management  
Department of Community Services  
Government of Yukon

Map Date: 4/9/2019



# 2018 Yukon Wildland Fires

## R92033

Scale 1:500,000 (NAD83)




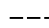


0 1 2 3 4 5 6 7 8 9 10 11 12 13 14 15 16 17 18 19 km

Albers equal area projection (standard parallels: 61°40' & 68°00')

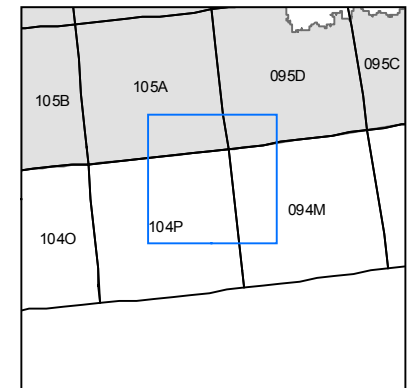
### Legend

-  Fire Perimeter
-  First Nation Settlement Land
-  Lake
-  Wetland
-  Rivers & Streams
-  Yukon Border

### Access

-  Highway
-  Main Road (2wd)
-  Secondary Road (2wd)
-  Limited-use road (4wd)
-  Trail
-  Cut line

### 1:250,000 NTS Map Series Numbers



### DIGITAL DATA SOURCES AND DISCLAIMERS

National Topographic DataBase (NTDB) compiled by Natural Resources Canada at 1:250,000. Reproduced under license from Her Majesty the Queen in Right of Canada, with permission of Natural Resources Canada.



Map Compiled By:  
Wildland Fire Management  
Department of Community Services  
Government of Yukon

Map Date: 4/9/2019

