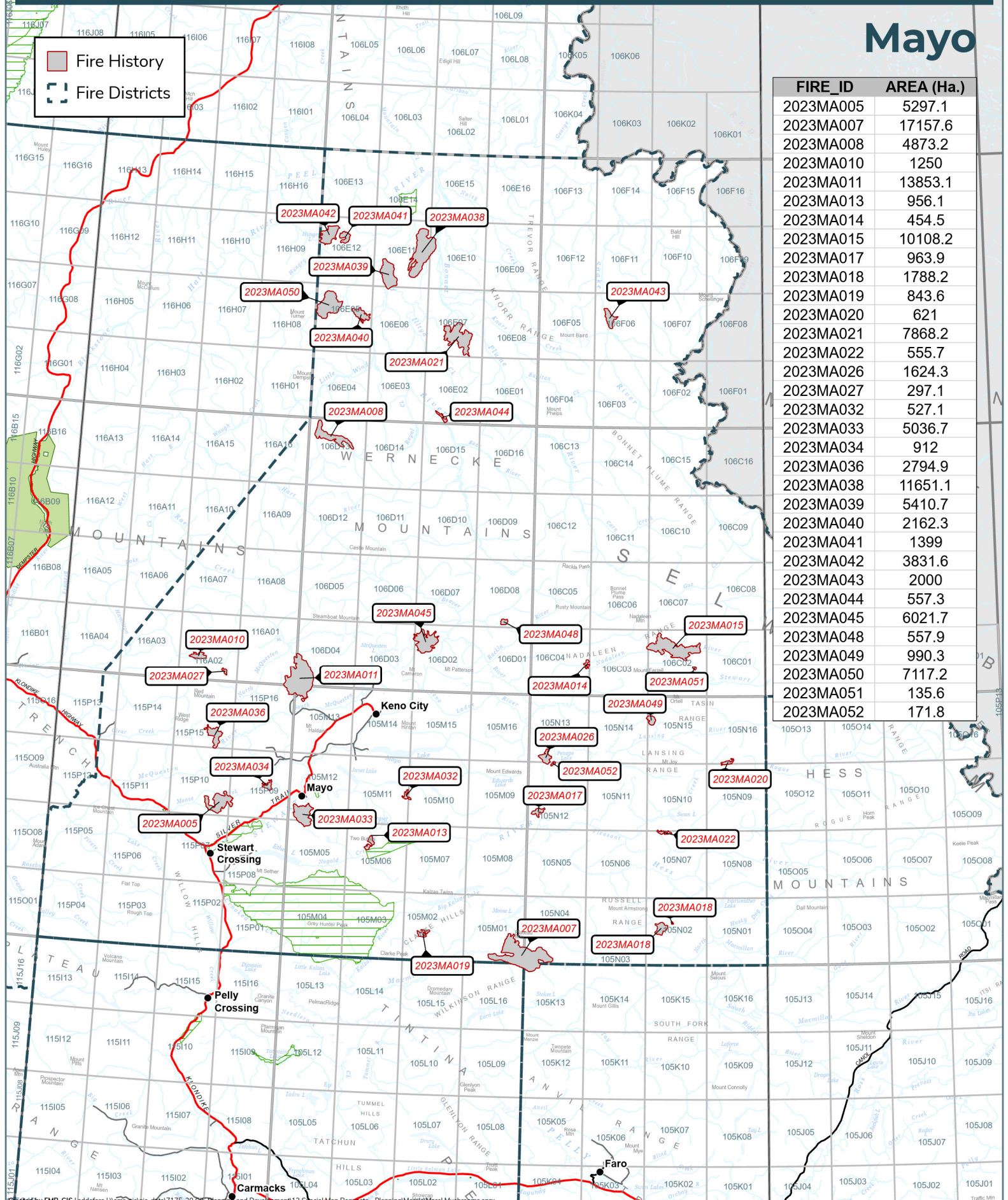


■ Fire History
□ Fire Districts



FIRE_ID	AREA (Ha.)
2023MA005	5297.1
2023MA007	17157.6
2023MA008	4873.2
2023MA010	1250
2023MA011	13853.1
2023MA013	956.1
2023MA014	454.5
2023MA015	10108.2
2023MA017	963.9
2023MA018	1788.2
2023MA019	843.6
2023MA020	621
2023MA021	7868.2
2023MA022	555.7
2023MA026	1624.3
2023MA027	297.1
2023MA032	527.1
2023MA033	5036.7
2023MA034	912
2023MA036	2794.9
2023MA038	11651.1
2023MA039	5410.7
2023MA040	2162.3
2023MA041	1399
2023MA042	3831.6
2023MA043	2000
2023MA044	557.3
2023MA045	6021.7
2023MA048	557.9
2023MA049	990.3
2023MA050	7117.2
2023MA051	135.6
2023MA052	171.8

2023 Wildland Fires

May 6, 2024

Fire District:
Mayo

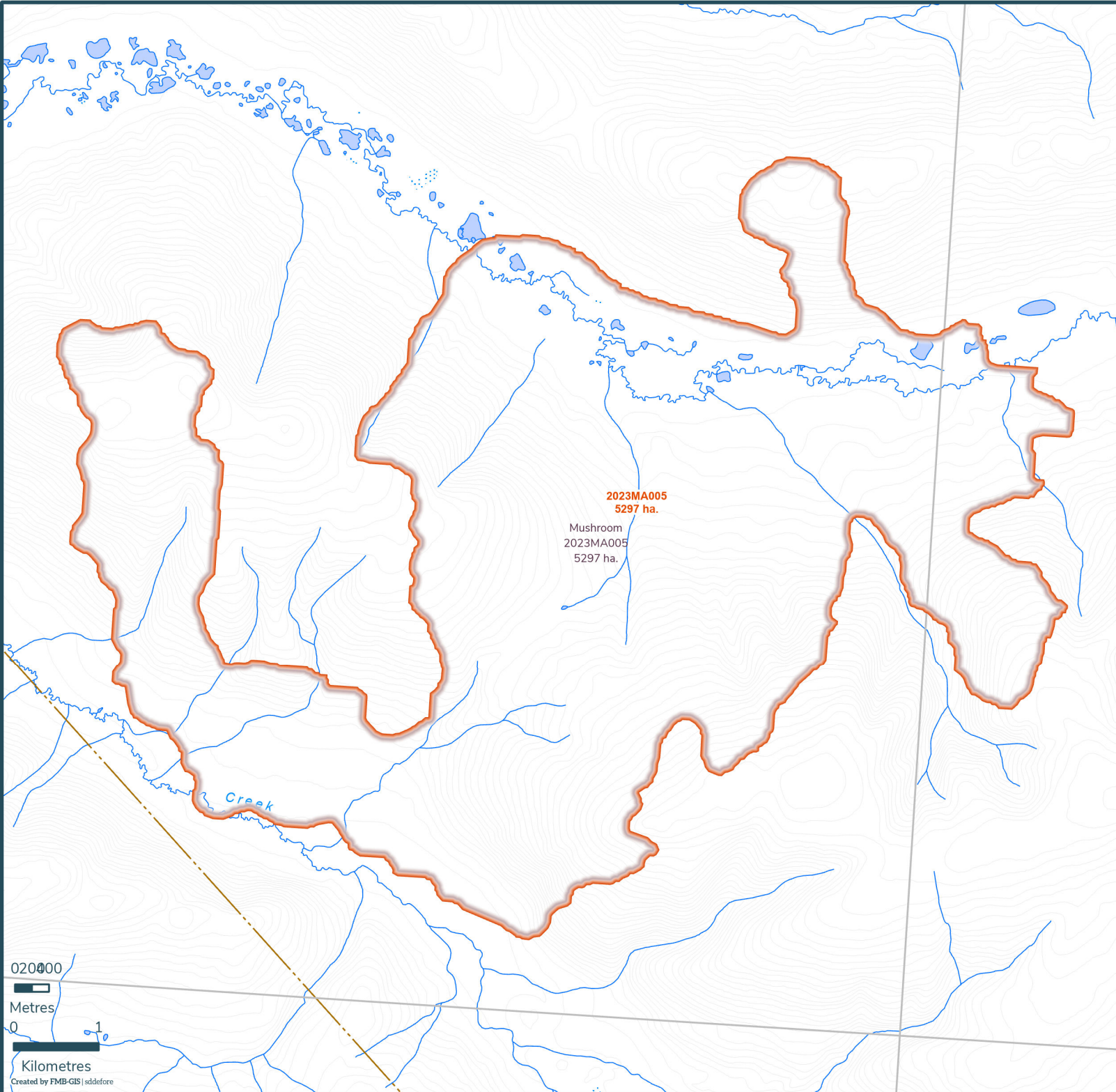
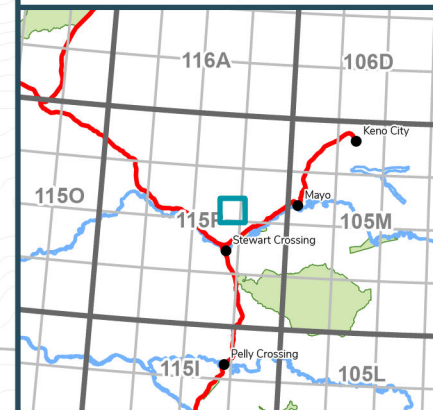
2023MA005

Scale: 1:62,000

Map Center: 136°35'11"W 63°32'56"N
NAD 1983 Yukon Albers

-  Fire Perimeter
-  Designated Morel Mushroom Areas
-  Surveyed Land Parcels
-  Easements
-  Land Dispositions
-  Parks and Campgrounds
-  Parks and Protected Areas
-  First Nation Settlement Lands - Surveyed
-  Interim Protected Settlement Lands
-  Rivers & Streams
-  Wetlands
-  Lakes

1:250,000 NTS Map Series Numbers



0 20000

Metres

0 1

Kilometres

Created by FMB-GIS | sddefore

2023 Wildland Fires



May 2, 2024

Fire District:
Mayo

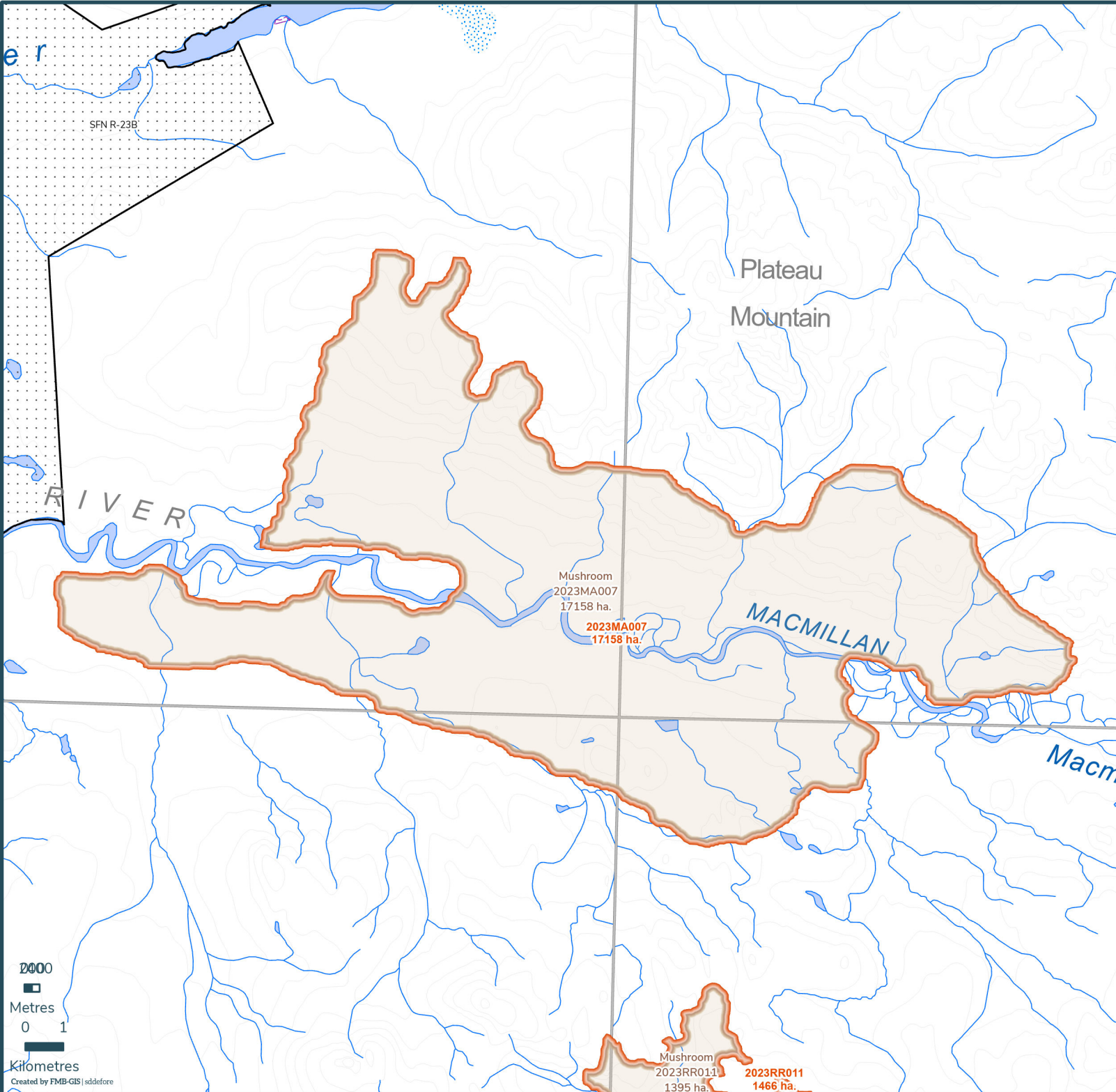
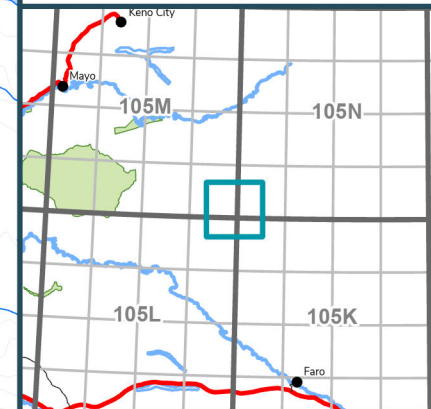
2023MA007

Scale: 1:139,000

Map Center: 134°1'48"W 63°2'23"N
NAD 1983 Yukon Albers

-  Fire Perimeter
-  Designated Morel Mushroom Areas
-  Surveyed Land Parcels
-  Easements
-  Land Dispositions
-  Parks and Campgrounds
-  Parks and Protected Areas
-  First Nation Settlement Lands - Surveyed
-  Interim Protected Settlement Lands
-  Rivers & Streams
-  Wetlands
-  Lakes

1:250,000 NTS Map Series Numbers



Mushroom
2023MA007
17158 ha.

2023MA007
17158 ha.

Mushroom
2023RR011
1395 ha.

2023RR011
1466 ha.

2000
Metres
0 1
Kilometres
Created by FMB-GIS | sddefore

2023 Wildland Fires

May 2, 2024

Fire District:
Mayo

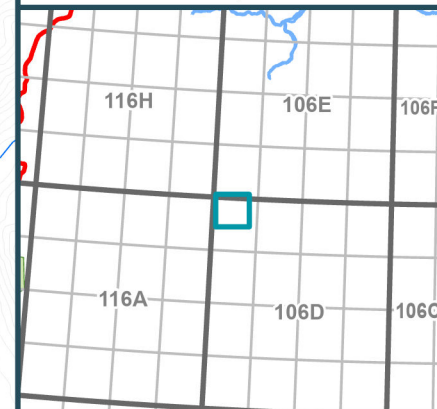
2023MA008

Scale: 1:83,000

Map Center: 135°46'47"W 64°56'28"N
NAD 1983 Yukon Albers

- Fire Perimeter
- Designated Morel Mushroom Areas
- Surveyed Land Parcels
- Easements
- Land Dispositions
- Parks and Campgrounds
- Parks and Protected Areas
- First Nation Settlement Lands - Surveyed
- Interim Protected Settlement Lands
- Rivers & Streams
- Wetlands
- Lakes

1:250,000 NTS Map Series Numbers



Mushroom
2023MA008
4873 ha.
2023MA008
4873 ha.

Little

Wind

River

Little Wind River

0 1
Metres
0 1
Kilometres
Created by FMB-GIS | sddefore

2023 Wildland Fires

May 2, 2024

Fire District:
Mayo

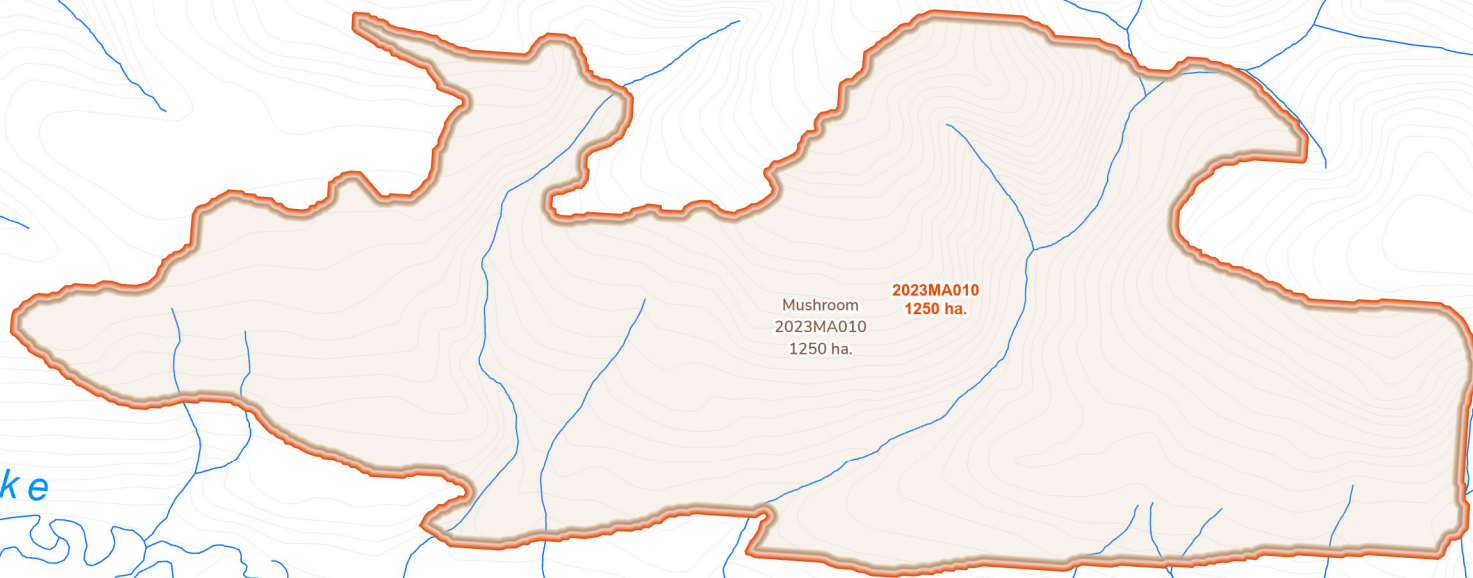
2023MA010

Scale: 1:37,000

Map Center: 136°50'43"W 64°5'29"N
NAD 1983 Yukon Albers

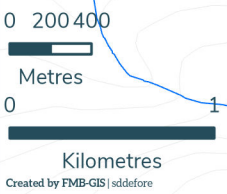
- Fire Perimeter
- Designated Morel Mushroom Areas
- Surveyed Land Parcels
- Easements
- Land Dispositions
- Parks and Campgrounds
- Parks and Protected Areas
- First Nation Settlement Lands - Surveyed
- Interim Protected Settlement Lands
- Rivers & Streams
- Wetlands
- Lakes

1:250,000 NTS Map Series Numbers



Mushroom
2023MA010
1250 ha.

dike



2023 Wildland Fires













May 2, 2024

Fire District:
Mayo

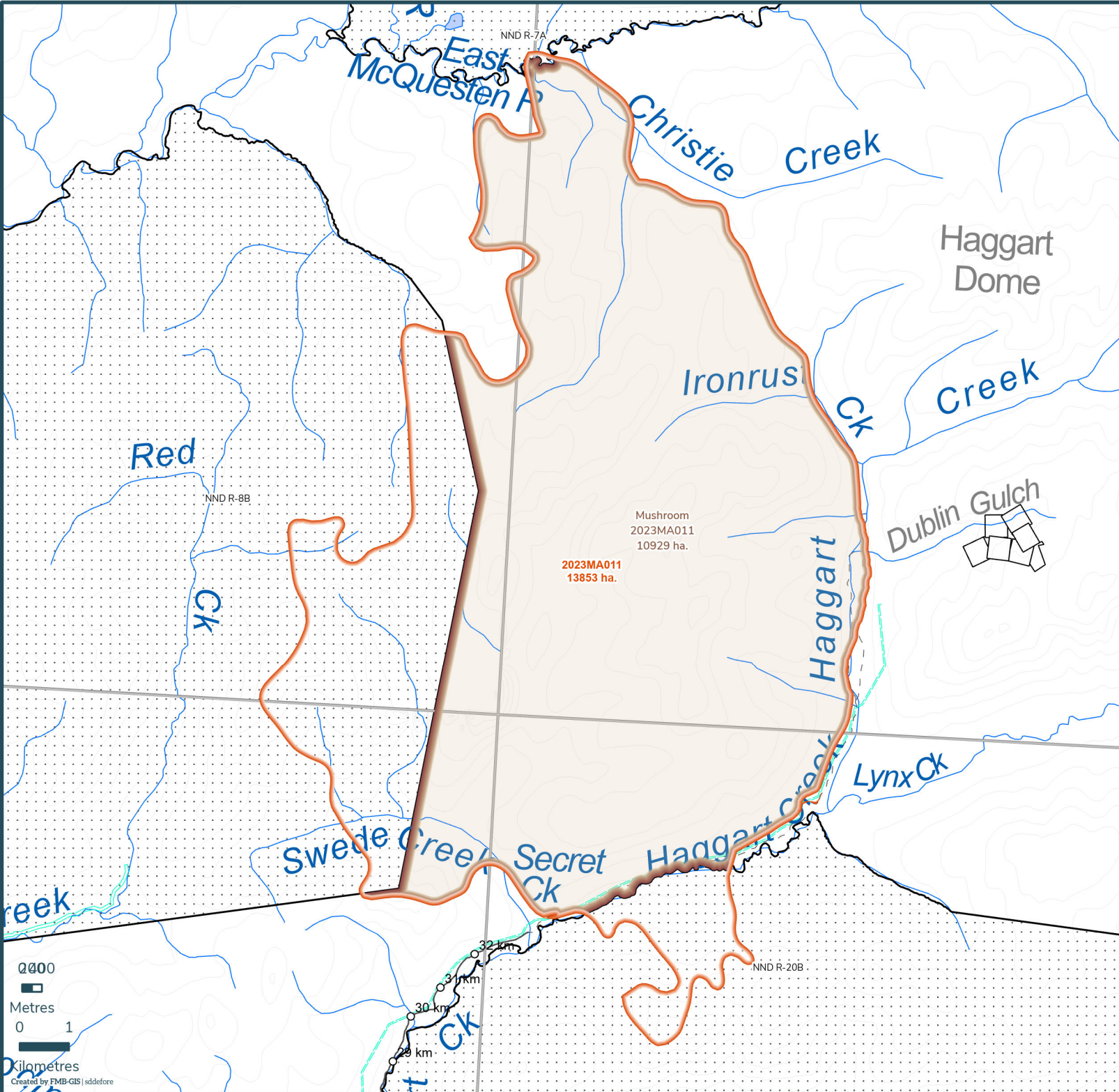
2023MA011

Scale: 1:107,000

Map Center: 135°58'33"W 64°1'51"N
NAD 1983 Yukon Albers

-  Fire Perimeter
-  Designated Morel Mushroom Areas
-  Surveyed Land Parcels
-  Easements
-  Land Dispositions
-  Parks and Campgrounds
-  Parks and Protected Areas
-  First Nation Settlement Lands - Surveyed
-  Interim Protected Settlement Lands
-  Rivers & Streams
-  Wetlands
-  Lakes

1:250,000 NTS Map Series Numbers



2023 Wildland Fires













May 2, 2024

Fire District:
Mayo

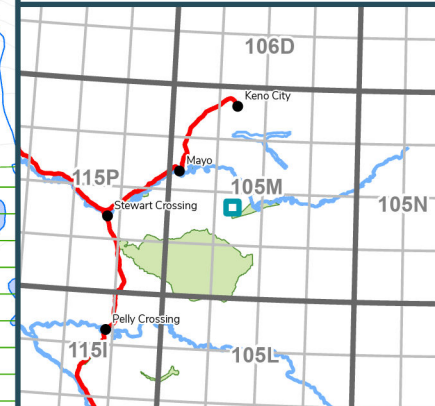
2023MA013

Scale: 1:32,000

Map Center: 135°18'44"W 63°25'45"N
NAD 1983 Yukon Albers

-  Fire Perimeter
-  Designated Morel Mushroom Areas
-  Surveyed Land Parcels
-  Easements
-  Land Dispositions
-  Parks and Campgrounds
-  Parks and Protected Areas
-  First Nation Settlement Lands - Surveyed
-  Interim Protected Settlement Lands
-  Rivers & Streams
-  Wetlands
-  Lakes

1:250,000 NTS Map Series Numbers



NND R-6A

2023MA013
956 ha.
Mushroom
2023MA013
952 ha.

HORSESHOE
SLOUGH HABITAT
PROTECTION AREA

0 200 400

Metres

1

Kilometres

Created by FMB-GIS | sldefore

2023 Wildland Fires

May 2, 2024

Fire District:
Mayo

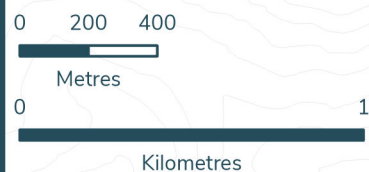
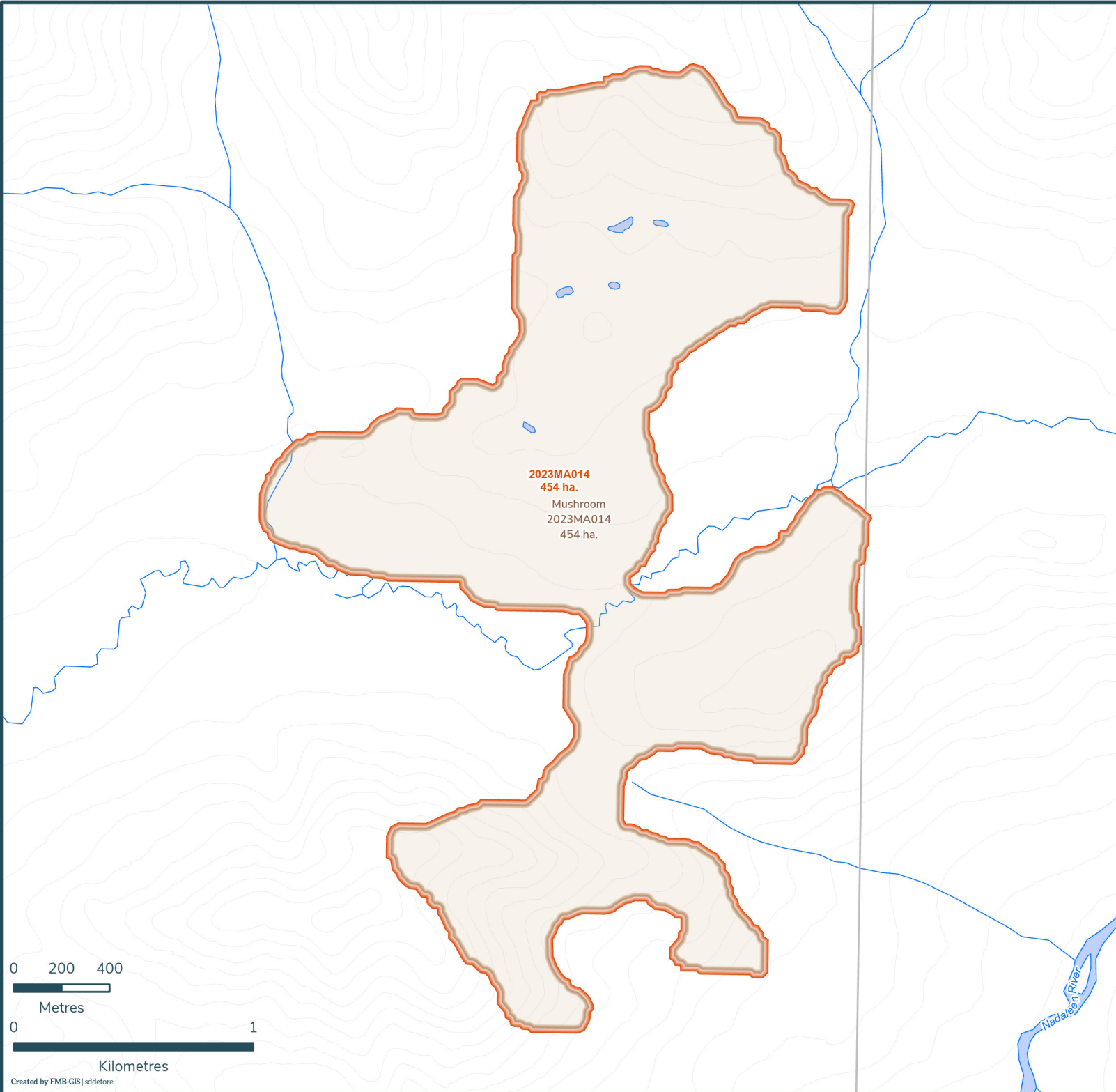
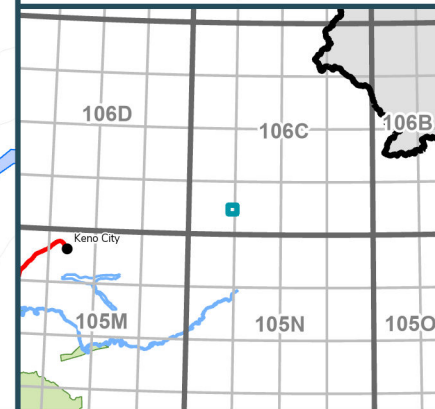
2023MA014

Scale: 1:22,000

Map Center: 133°31'32"W 64°7'4"N
NAD 1983 Yukon Albers

- Fire Perimeter
- Designated Morel Mushroom Areas
- Surveyed Land Parcels
- Easements
- Land Dispositions
- Parks and Campgrounds
- Parks and Protected Areas
- First Nation Settlement Lands - Surveyed
- Interim Protected Settlement Lands
- Rivers & Streams
- Wetlands
- Lakes

1:250,000 NTS Map Series Numbers



2023 Wildland Fires

May 2, 2024

Fire District:
Mayo

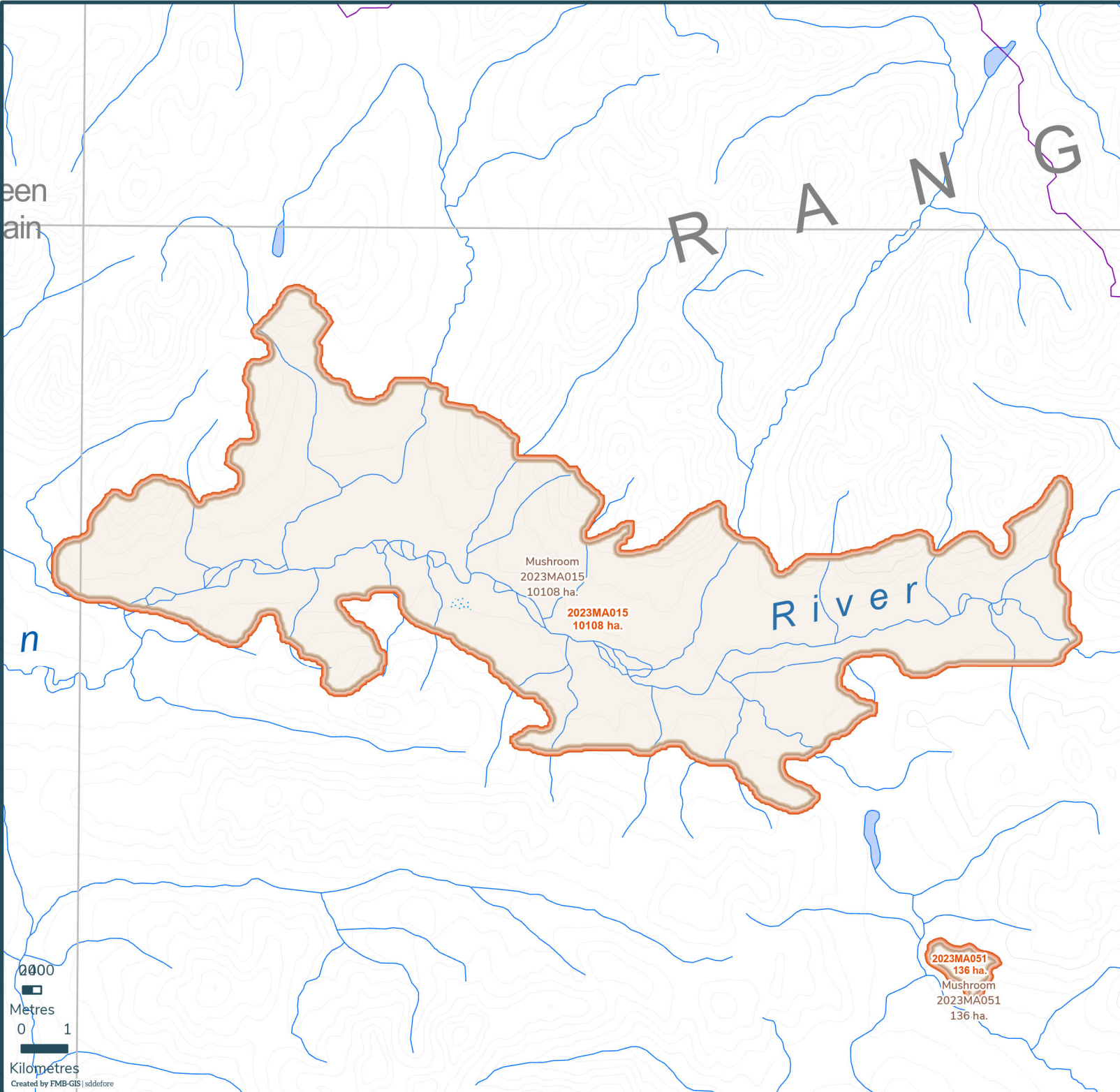
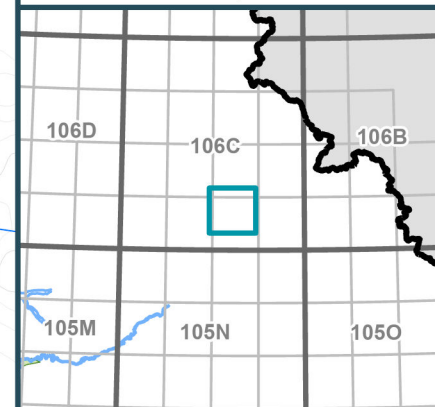
2023MA015

Scale: 1:115,000

Map Center: 132°46'55"W 64°11'15"N
NAD 1983 Yukon Albers

-  Fire Perimeter
-  Designated Morel Mushroom Areas
-  Surveyed Land Parcels
-  Easements
-  Land Dispositions
-  Parks and Campgrounds
-  Parks and Protected Areas
-  First Nation Settlement Lands - Surveyed
-  Interim Protected Settlement Lands
-  Rivers & Streams
-  Wetlands
-  Lakes

1:250,000 NTS Map Series Numbers



Mushroom
2023MA015
10108 ha.

2023MA015
10108 ha.

River

2023MA051
136 ha.
Mushroom
2023MA051
136 ha.

0000
Metres
0 1
Kilometres
Created by FMB-GIS | sddefore

2023 Wildland Fires

May 6, 2024

Fire District:
Mayo

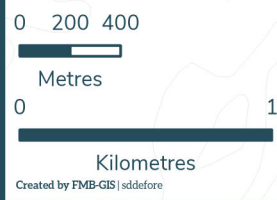
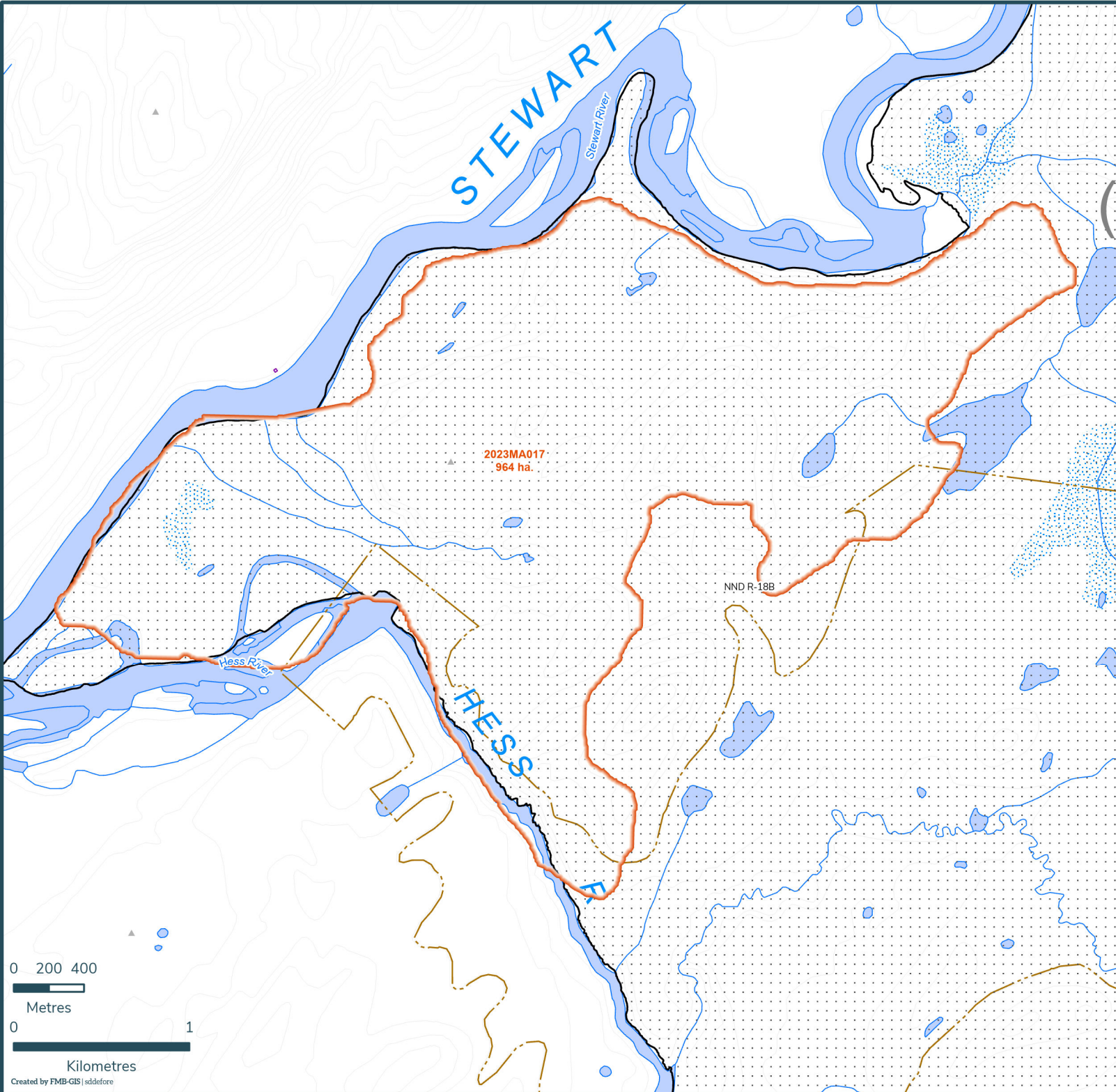
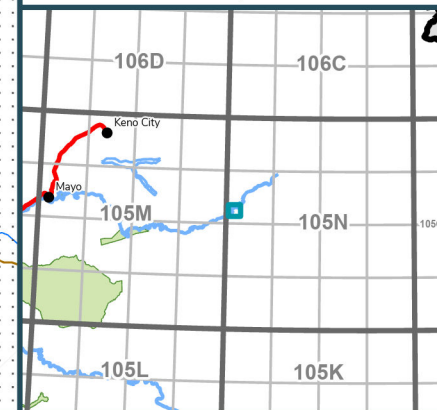
2023MA017

Scale: 1:30,000

Map Center: 133°54'40"W 63°33'41"N
NAD 1983 Yukon Albers

- Fire Perimeter
- Designated Morel Mushroom Areas
- Surveyed Land Parcels
- Easements
- Land Dispositions
- Parks and Campgrounds
- Parks and Protected Areas
- First Nation Settlement Lands - Surveyed
- Interim Protected Settlement Lands
- Rivers & Streams
- Wetlands
- Lakes

1:250,000 NTS Map Series Numbers



2023 Wildland Fires

May 2, 2024

Fire District:
Mayo

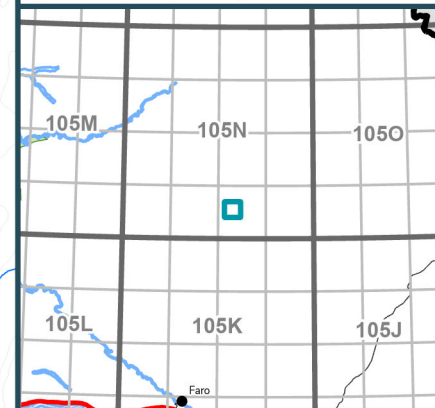
2023MA018

Scale: 1:40,000

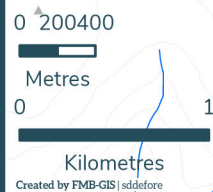
Map Center: 132°50'59"W 63°8'16"N
NAD 1983 Yukon Albers

- Fire Perimeter
- Designated Morel Mushroom Areas
- Surveyed Land Parcels
- Easements
- Land Dispositions
- Parks and Campgrounds
- Parks and Protected Areas
- First Nation Settlement Lands - Surveyed
- Interim Protected Settlement Lands
- Rivers & Streams
- Wetlands
- Lakes

1:250,000 NTS Map Series Numbers



YUKON



2023 Wildland Fires

May 2, 2024

Fire District:
Mayo

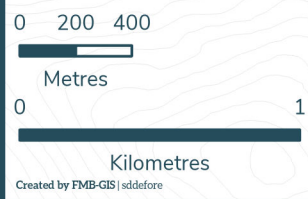
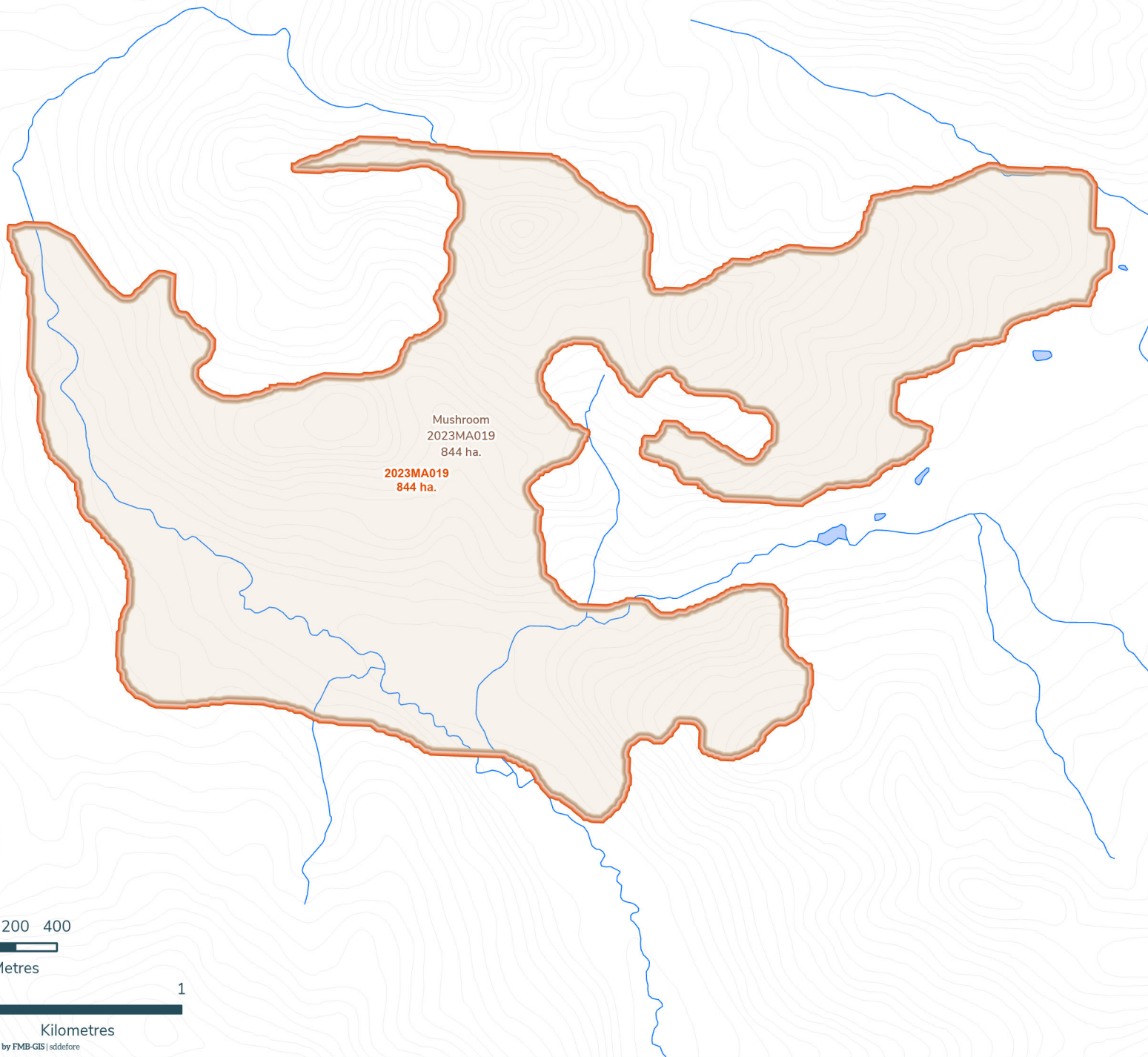
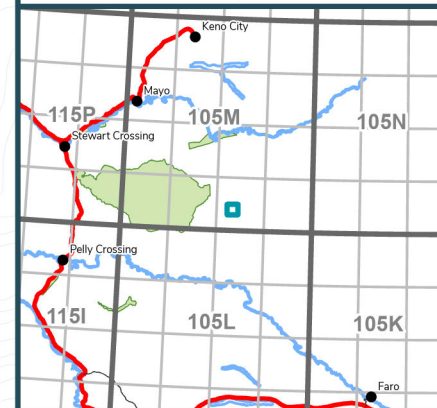
2023MA019

Scale: 1:27,000

Map Center: 134°49'58"W 63°5'57"N
NAD 1983 Yukon Albers

- Fire Perimeter
- Designated Morel Mushroom Areas
- Surveyed Land Parcels
- Easements
- Land Dispositions
- Parks and Campgrounds
- Parks and Protected Areas
- First Nation Settlement Lands - Surveyed
- Interim Protected Settlement Lands
- Rivers & Streams
- Wetlands
- Lakes

1:250,000 NTS Map Series Numbers



2023 Wildland Fires

May 2, 2024

Fire District:
Mayo

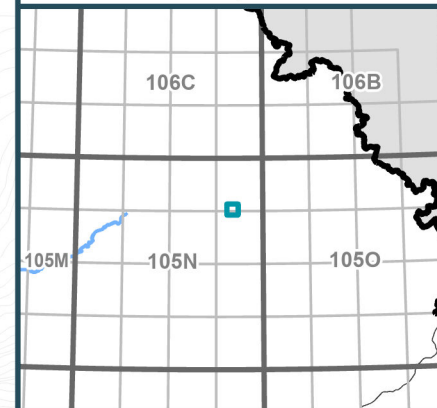
2023MA020

Scale: 1:28,000

Map Center: 132°19'30"W 63°45'27"N
NAD 1983 Yukon Albers

- Fire Perimeter
- Designated Morel Mushroom Areas
- Surveyed Land Parcels
- Easements
- Land Dispositions
- Parks and Campgrounds
- Parks and Protected Areas
- First Nation Settlement Lands - Surveyed
- Interim Protected Settlement Lands
- Rivers & Streams
- Wetlands
- Lakes

1:250,000 NTS Map Series Numbers



2023MA020
621 ha.

Mushroom
2023MA020
621 ha.

0 200 400

Metres

0 1

Kilometres

2023 Wildland Fires

May 2, 2024

Fire District:
Mayo

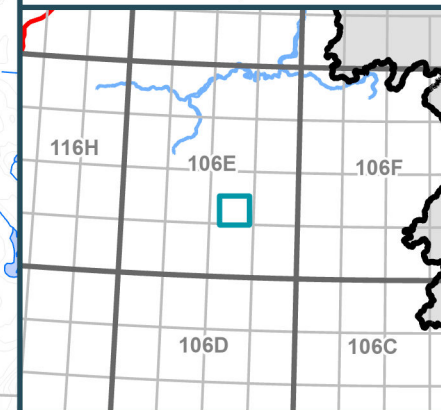
2023MA021

Scale: 1:74,000

Map Center: 134°43'7"W 65°18'53"N
NAD 1983 Yukon Albers

- Fire Perimeter
- Designated Morel Mushroom Areas
- Surveyed Land Parcels
- Easements
- Land Dispositions
- Parks and Campgrounds
- Parks and Protected Areas
- First Nation Settlement Lands - Surveyed
- Interim Protected Settlement Lands
- Rivers & Streams
- Wetlands
- Lakes

1:250,000 NTS Map Series Numbers



0 2000 4000
Metres
0 1
Kilometres
Created by FMB-GIS | sdd@fore

2023 Wildland Fires

May 2, 2024

Fire District:
Mayo

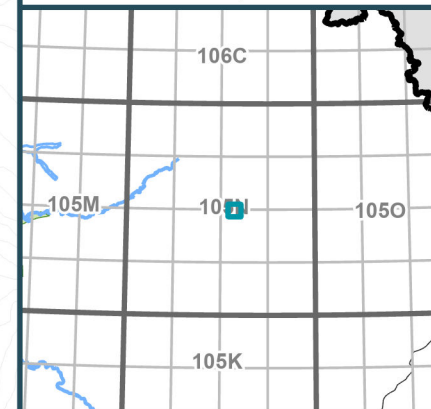
2023MA022

Scale: 1:32,000

Map Center: 132°51'11"W 63°29'43"N
NAD 1983 Yukon Albers

- Fire Perimeter
- Designated Morel Mushroom Areas
- Surveyed Land Parcels
- Easements
- Land Dispositions
- Parks and Campgrounds
- Parks and Protected Areas
- First Nation Settlement Lands - Surveyed
- Interim Protected Settlement Lands
- Rivers & Streams
- Wetlands
- Lakes

1:250,000 NTS Map Series Numbers



2023MA022
556 ha.

Mushroom
2023MA022
556 ha.

0 200 400

Metres

0 1

Kilometres

Created by FMB-GIS | sddefore

S T E W A R T

2023 Wildland Fires

May 2, 2024

Fire District:
Mayo

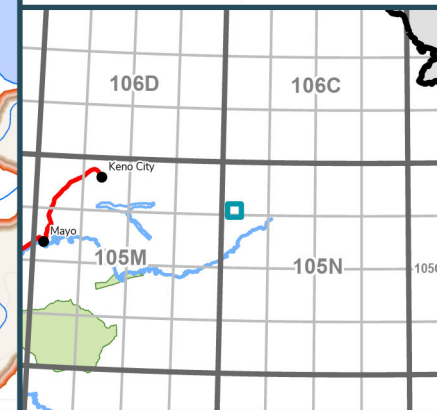
2023MA026

Scale: 1:34,000

Map Center: 133°51'49"W 63°46'15"N
NAD 1983 Yukon Albers

- Fire Perimeter
- Designated Morel Mushroom Areas
- Surveyed Land Parcels
- Easements
- Land Dispositions
- Parks and Campgrounds
- Parks and Protected Areas
- First Nation Settlement Lands - Surveyed
- Interim Protected Settlement Lands
- Rivers & Streams
- Wetlands
- Lakes

1:250,000 NTS Map Series Numbers



2023 Wildland Fires

May 2, 2024

Fire District:
Mayo

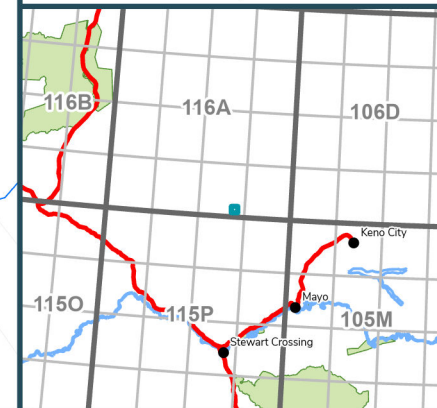
2023MA027

Scale: 1:16,000

Map Center: 136°36'34"W 64°2'7"N
NAD 1983 Yukon Albers

- Fire Perimeter
- Designated Morel Mushroom Areas
- Surveyed Land Parcels
- Easements
- Land Dispositions
- Parks and Campgrounds
- Parks and Protected Areas
- First Nation Settlement Lands - Surveyed
- Interim Protected Settlement Lands
- Rivers & Streams
- Wetlands
- Lakes

1:250,000 NTS Map Series Numbers



2023MA027
297 ha.
Mushroom
2023MA027
297 ha.

0 200 400
Metres

0 1
Kilometres

2023 Wildland Fires













May 2, 2024

Fire District:
Mayo

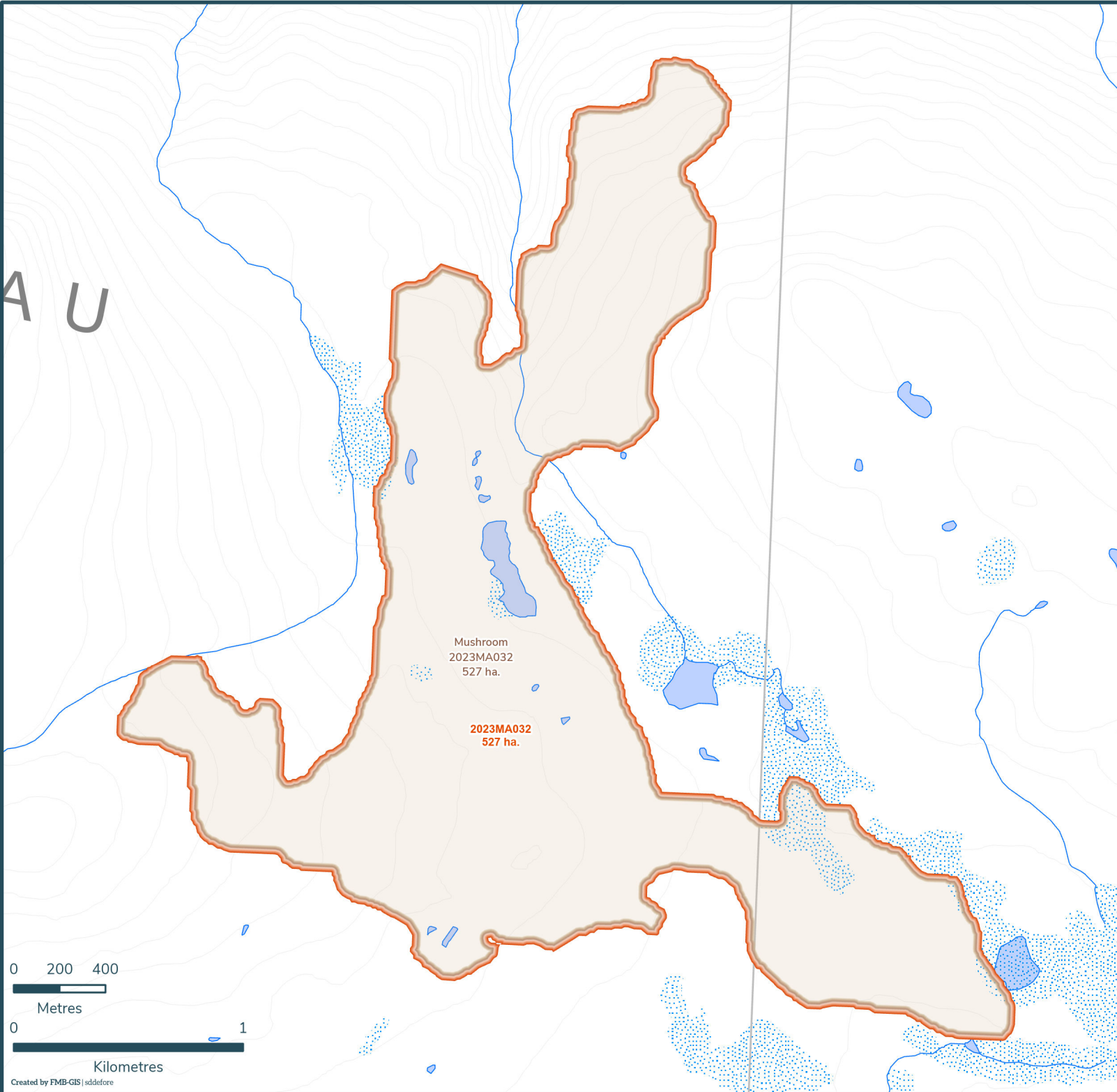
2023MA032

Scale: 1:23,000

Map Center: 135°15'W 63°36'48"N
NAD 1983 Yukon Albers

-  Fire Perimeter
-  Designated Morel Mushroom Areas
-  Surveyed Land Parcels
-  Easements
-  Land Dispositions
-  Parks and Campgrounds
-  Parks and Protected Areas
-  First Nation Settlement Lands - Surveyed
-  Interim Protected Settlement Lands
-  Rivers & Streams
-  Wetlands
-  Lakes

1:250,000 NTS Map Series Numbers



0 200 400

Metres

0 1

Kilometres

2023 Wildland Fires

May 2, 2024

Fire District:
Mayo

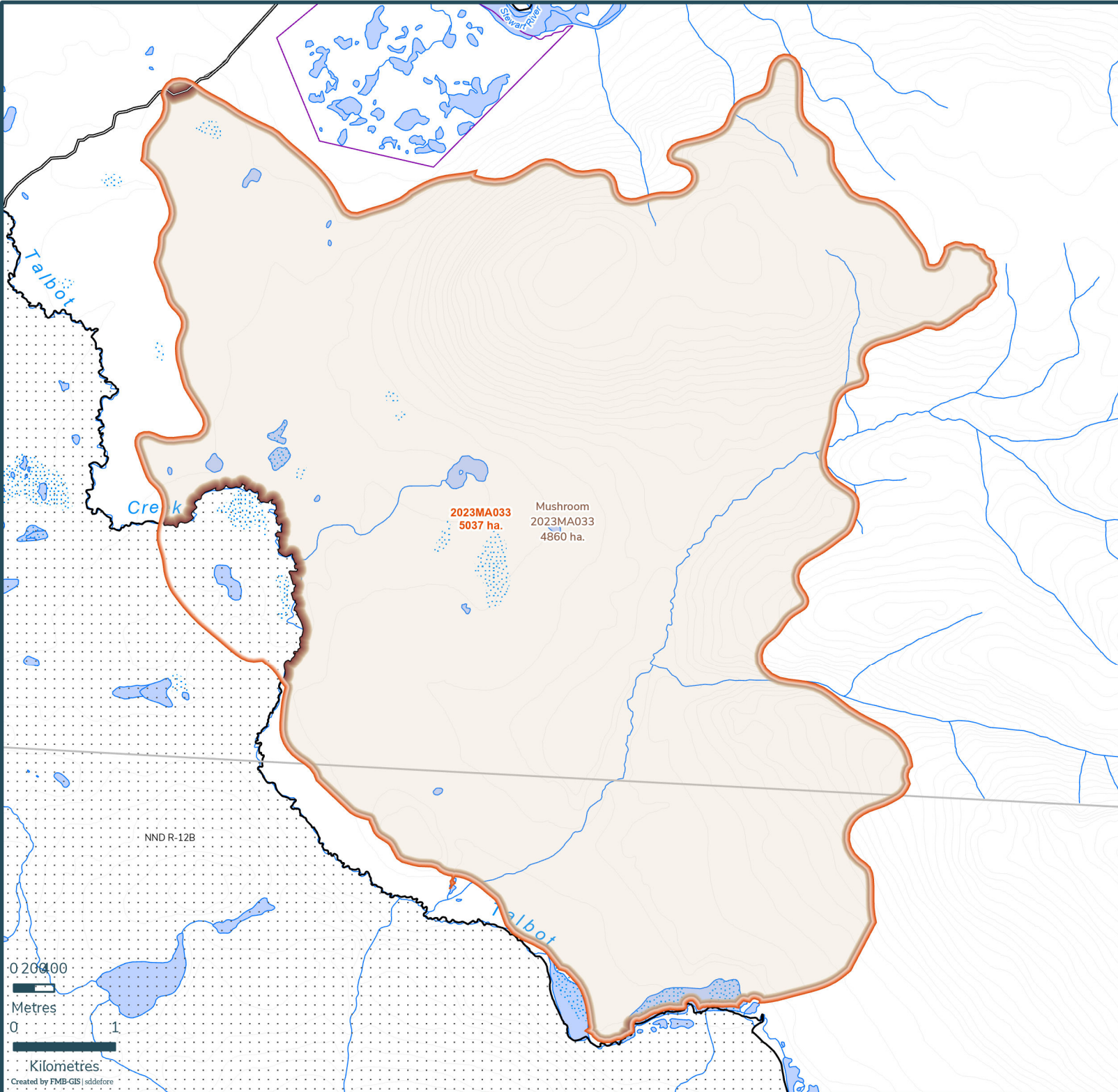
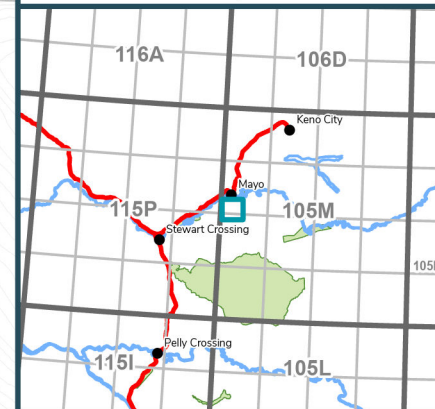
2023MA033

Scale: 1:52,000

Map Center: 135°52'25"W 63°31'13"N
NAD 1983 Yukon Albers

- Fire Perimeter
- Designated Morel Mushroom Areas
- Surveyed Land Parcels
- Easements
- Land Dispositions
- Parks and Campgrounds
- Parks and Protected Areas
- First Nation Settlement Lands - Surveyed
- Interim Protected Settlement Lands
- Rivers & Streams
- Wetlands
- Lakes

1:250,000 NTS Map Series Numbers



0 200 400
Metres
0 1
Kilometres
Created by FMB-GIS | sld@fore

2023 Wildland Fires

May 2, 2024

Fire District:
Mayo

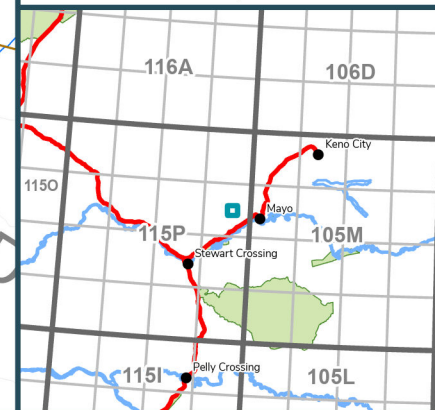
2023MA034

Scale: 1:25,000

Map Center: 136°11'28"W 63°37'23"N
NAD 1983 Yukon Albers

-  Fire Perimeter
-  Designated Morel Mushroom Areas
-  Surveyed Land Parcels
-  Easements
-  Land Dispositions
-  Parks and Campgrounds
-  Parks and Protected Areas
-  First Nation Settlement Lands - Surveyed
-  Interim Protected Settlement Lands
-  Rivers & Streams
-  Wetlands
-  Lakes

1:250,000 NTS Map Series Numbers



Creek

LIBERAL

RID

2023MA034
912 ha.
Mushroom
2023MA034
912 ha.



2023 Wildland Fires

May 2, 2024

Fire District:
Mayo

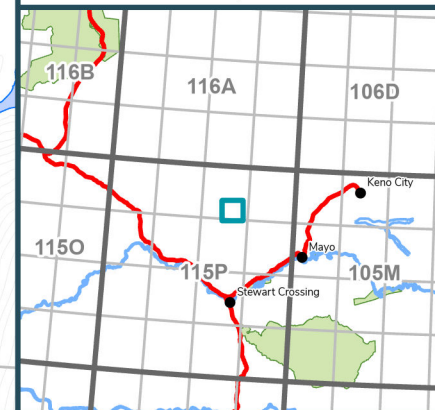
2023MA036

Scale: 1:52,000

Map Center: 136°40'2"W 63°47'32"N
NAD 1983 Yukon Albers

- Fire Perimeter
- Designated Morel Mushroom Areas
- Surveyed Land Parcels
- Easements
- Land Dispositions
- Parks and Campgrounds
- Parks and Protected Areas
- First Nation Settlement Lands - Surveyed
- Interim Protected Settlement Lands
- Rivers & Streams
- Wetlands
- Lakes

1:250,000 NTS Map Series Numbers



RIDGE

Sunshine

Boulder

2023MA036
2795 ha.
Mushroom
2023MA036
2795 ha.

Creek

McQUESTEN
McQuesten River

Mayo

0 200 400

Metres

0 1

Kilometres

Created by FMB-GIS | sdd@fore

2023 Wildland Fires

May 2, 2024

Fire District:
Mayo

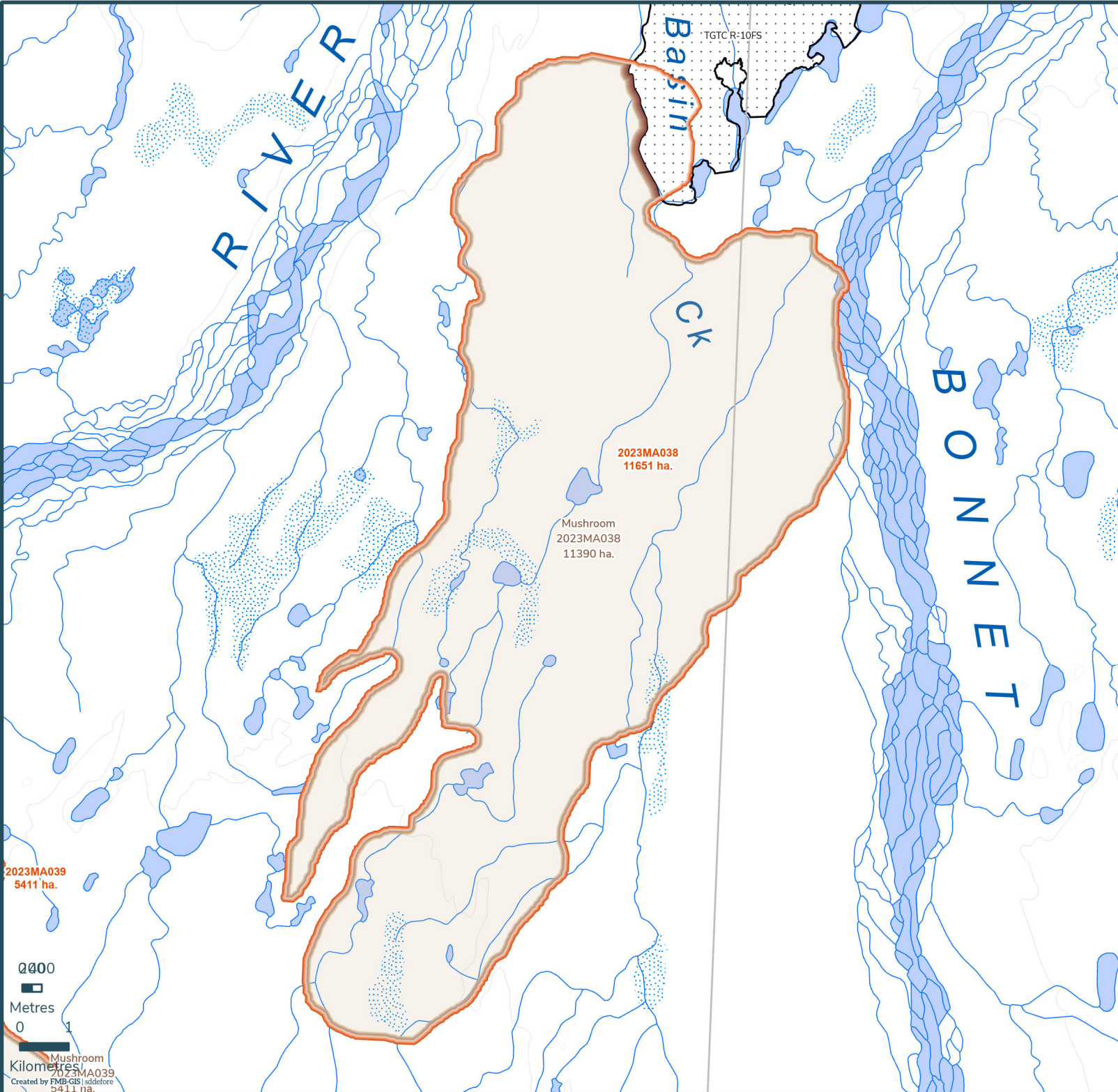
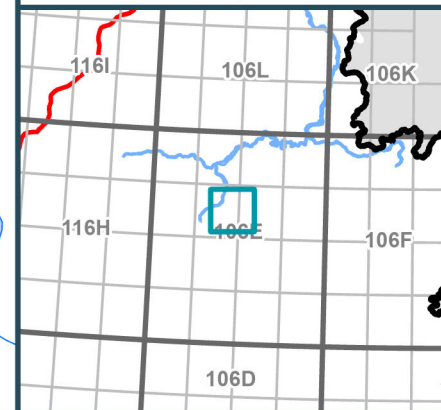
2023MA038

Scale: 1:108,000

Map Center: 135°4'22"W 65°37'50"N
NAD 1983 Yukon Albers

- Fire Perimeter
- Designated Morel Mushroom Areas
- Surveyed Land Parcels
- Easements
- Land Dispositions
- Parks and Campgrounds
- Parks and Protected Areas
- First Nation Settlement Lands - Surveyed
- Interim Protected Settlement Lands
- Rivers & Streams
- Wetlands
- Lakes

1:250,000 NTS Map Series Numbers



2023MA038
11651 ha.

Mushroom
2023MA038
11390 ha.

2023MA039
5411 ha.

0000

Metres



Kilometres
Created by FMB-GIS/sldiffre
5411 ha.

2023 Wildland Fires

May 2, 2024

Fire District:
Mayo

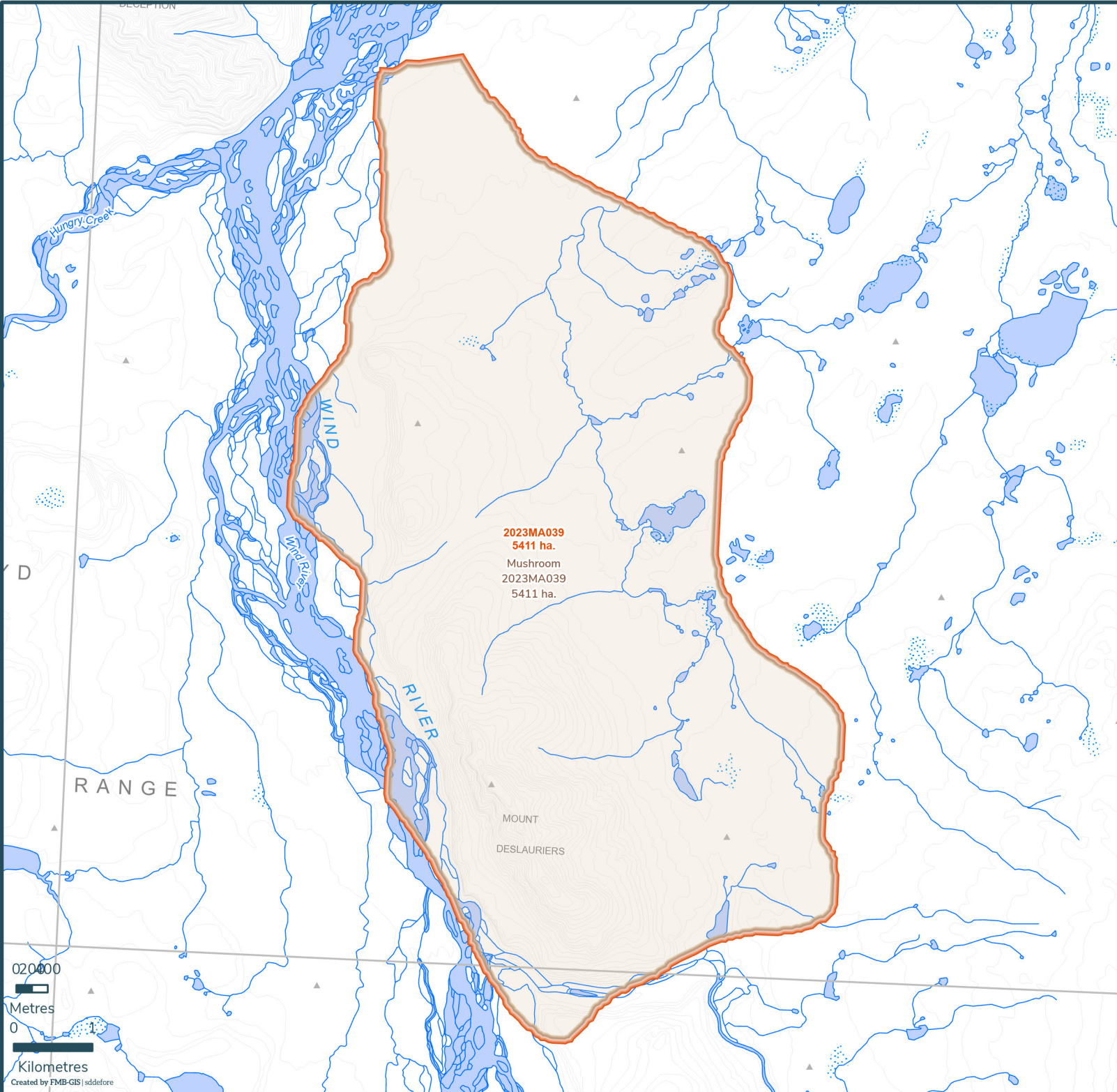
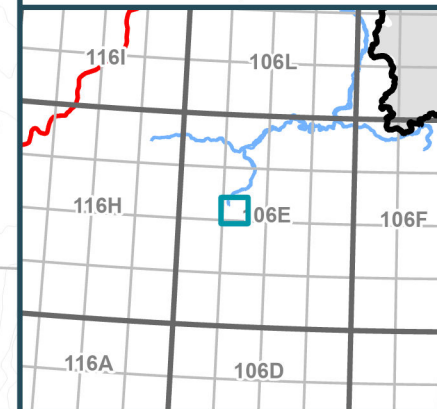
2023MA039

Scale: 1:67,000

Map Center: 135°21'54"W 65°32'52"N
NAD 1983 Yukon Albers

- Fire Perimeter
- Designated Morel Mushroom Areas
- Surveyed Land Parcels
- Easements
- Land Dispositions
- Parks and Campgrounds
- Parks and Protected Areas
- First Nation Settlement Lands - Surveyed
- Interim Protected Settlement Lands
- Rivers & Streams
- Wetlands
- Lakes

1:250,000 NTS Map Series Numbers



0 20 400
Metres
0 1
Kilometres
Created by FMB-GIS | sldefore

R A N G E



2023 Wildland Fires

May 2, 2024

Fire District:
Mayo

2023MA040

Scale: 1:39,000

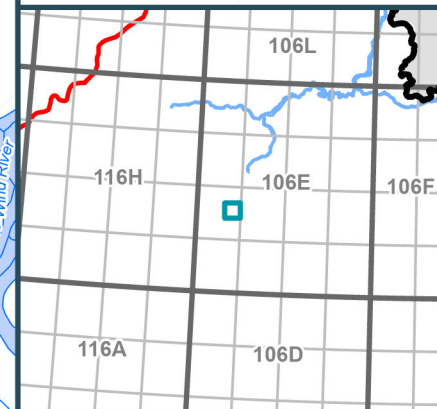
Map Center: 135°35'38"W 65°23'19"N
NAD 1983 Yukon Albers

- Fire Perimeter
- Designated Morel Mushroom Areas
- Surveyed Land Parcels
- Easements
- Land Dispositions
- Parks and Campgrounds
- Parks and Protected Areas
- First Nation Settlement Lands - Surveyed
- Interim Protected Settlement Lands
- Rivers & Streams
- Wetlands
- Lakes

2023MA040
2162 ha.

Mushroom
2023MA040
2162 ha.

1:250,000 NTS Map Series Numbers



0 200400

Metres

0 1

Kilometres

Created by FMB-GIS | sdd@fore

2023 Wildland Fires

May 2, 2024

Fire District:
Mayo

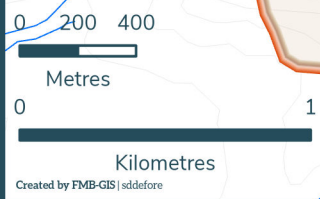
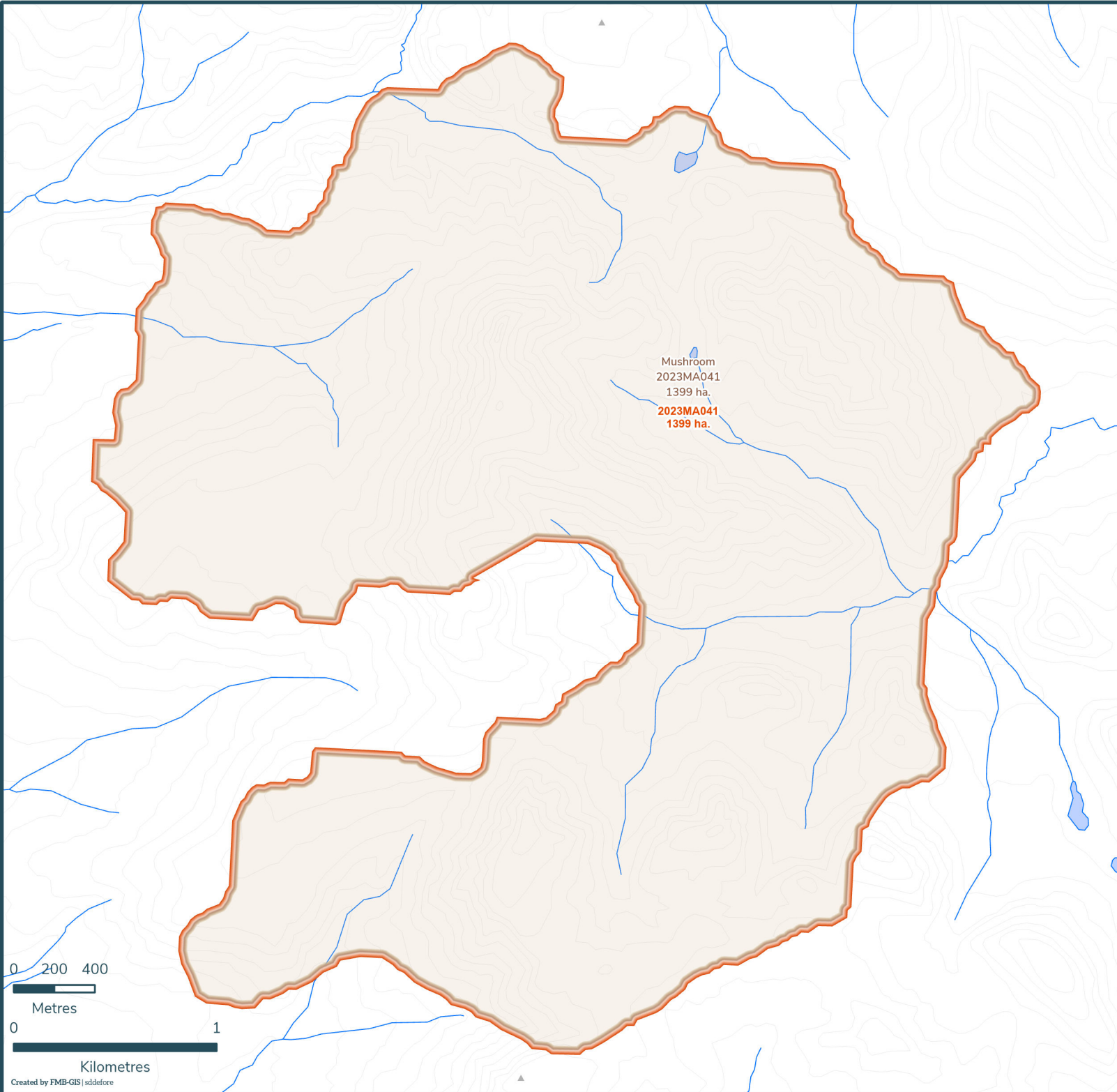
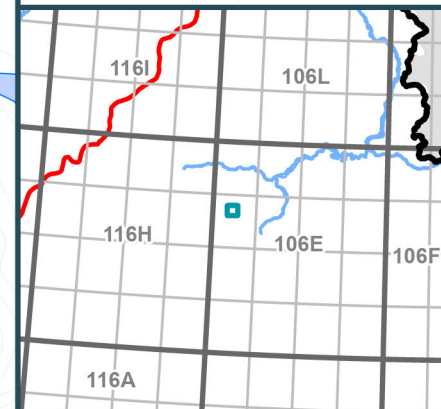
2023MA041

Scale: 1:26,000

Map Center: 135°46'27"W 65°40'33"N
NAD 1983 Yukon Albers

- Fire Perimeter
- Designated Morel Mushroom Areas
- Surveyed Land Parcels
- Easements
- Land Dispositions
- Parks and Campgrounds
- Parks and Protected Areas
- First Nation Settlement Lands - Surveyed
- Interim Protected Settlement Lands
- Rivers & Streams
- Wetlands
- Lakes

1:250,000 NTS Map Series Numbers



2023 Wildland Fires

May 2, 2024

Fire District:
Mayo

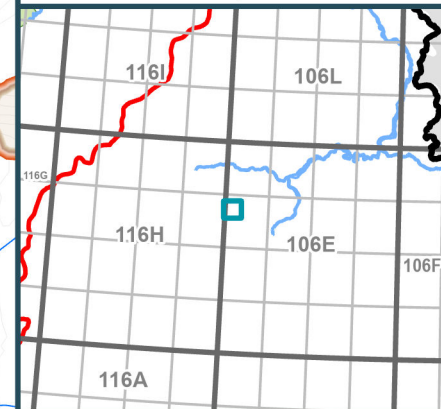
2023MA042

Scale: 1:44,000

Map Center: 135°54'52"W 65°40'49"N
NAD 1983 Yukon Albers

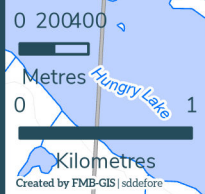
- Fire Perimeter
- Designated Morel Mushroom Areas
- Surveyed Land Parcels
- Easements
- Land Dispositions
- Parks and Campgrounds
- Parks and Protected Areas
- First Nation Settlement Lands - Surveyed
- Interim Protected Settlement Lands
- Rivers & Streams
- Wetlands
- Lakes

1:250,000 NTS Map Series Numbers



Mushroom
2023MA042
3832 ha.

Mushroom
2023MA041
1399 ha.



2023 Wildland Fires











May 2, 2024

Fire District:
Mayo

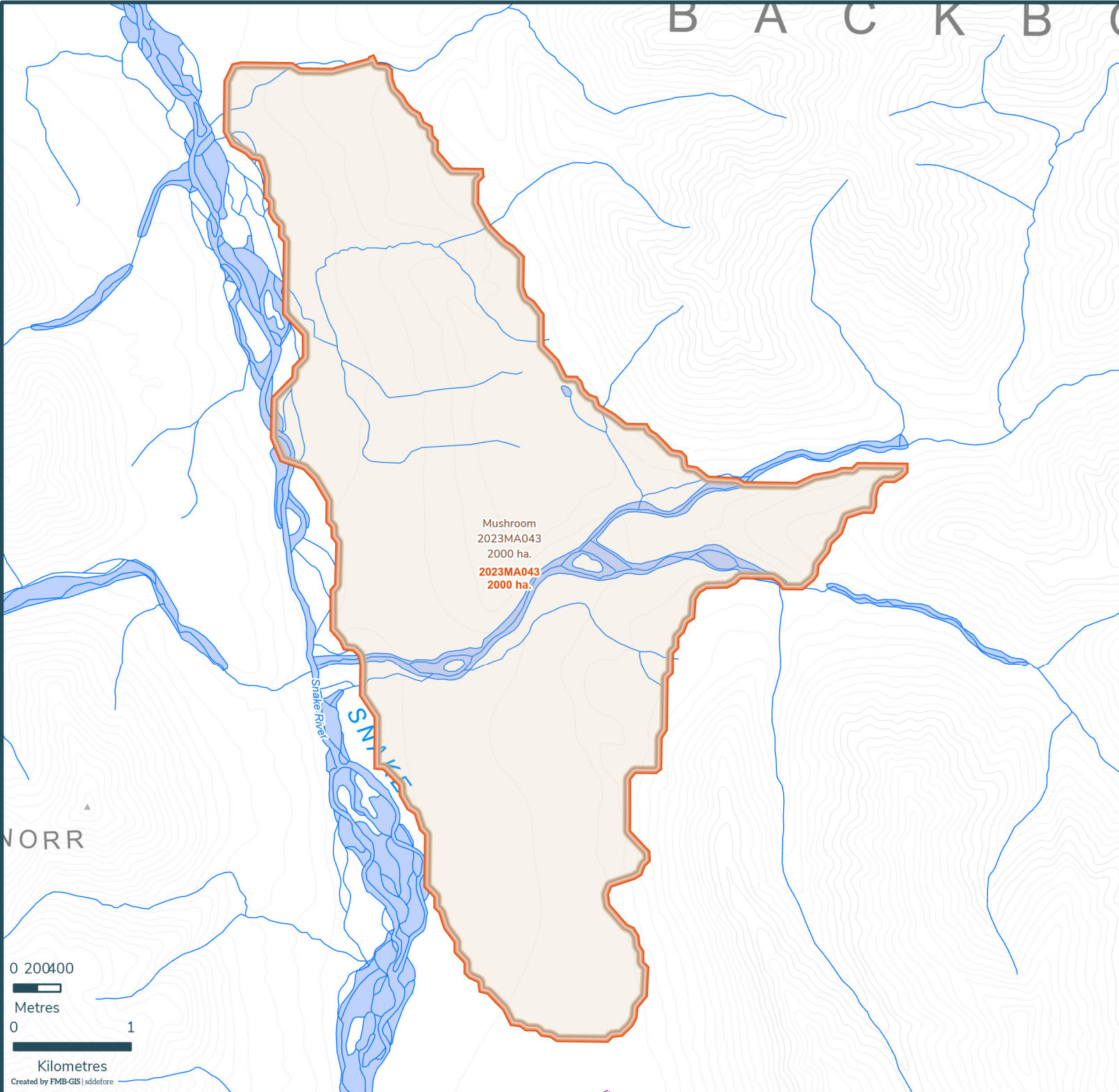
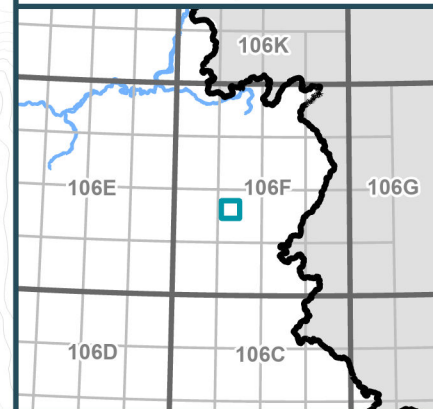
2023MA043

Scale: 1:45,000

Map Center: 133°21'21"W 65°24'22"N
NAD 1983 Yukon Albers

-  Fire Perimeter
-  Designated Morel Mushroom Areas
-  Surveyed Land Parcels
-  Easements
-  Land Dispositions
-  Parks and Campgrounds
-  Parks and Protected Areas
-  First Nation Settlement Lands - Surveyed
-  Interim Protected Settlement Lands
-  Rivers & Streams
-  Wetlands
-  Lakes

1:250,000 NTS Map Series Numbers



0 200400

Metres

0 1

Kilometres

Created by FMB-GIS | sldefore

2023 Wildland Fires

May 2, 2024

Fire District:
Mayo

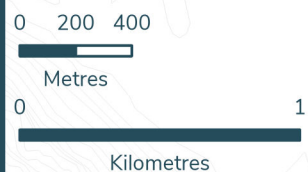
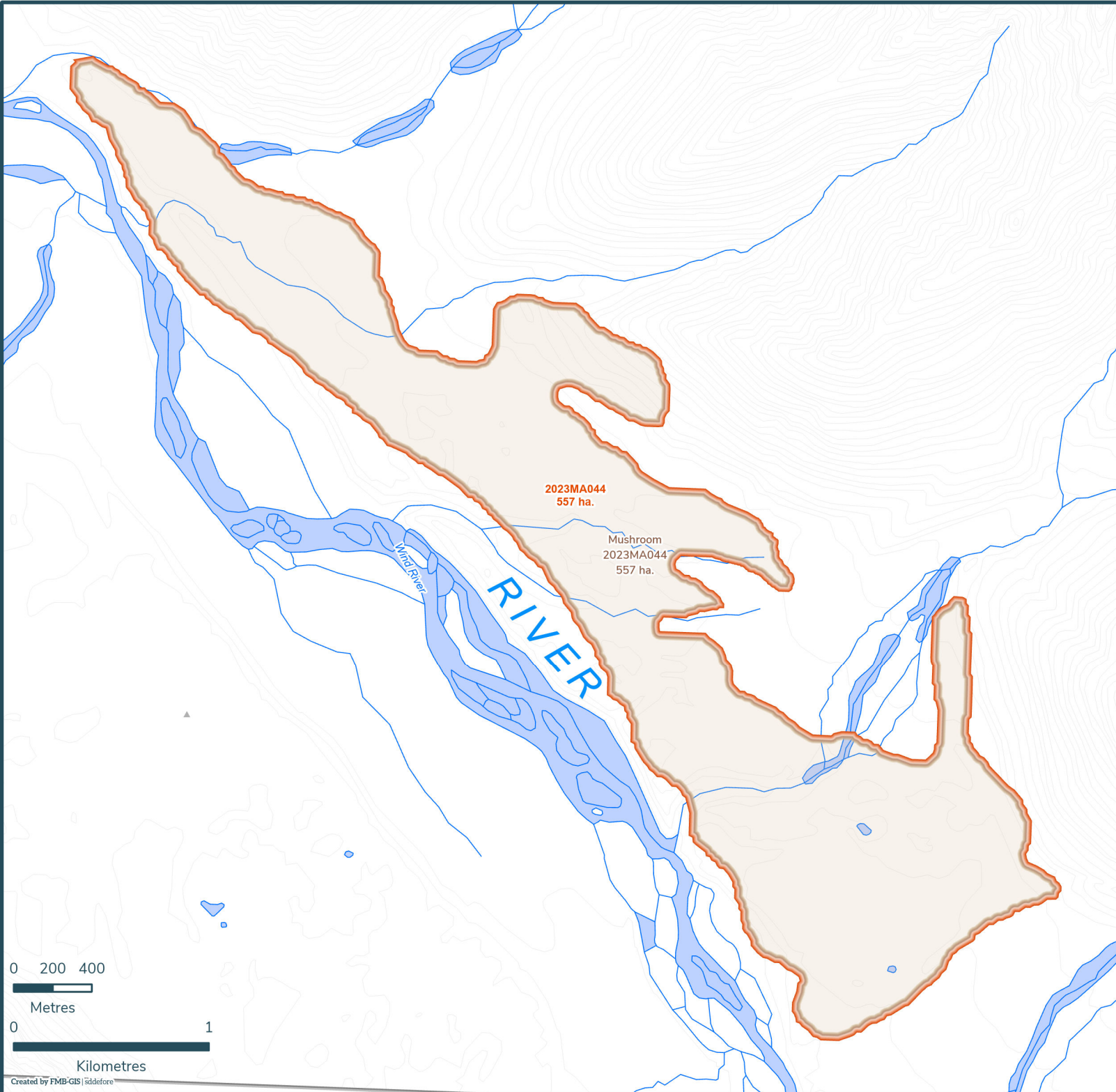
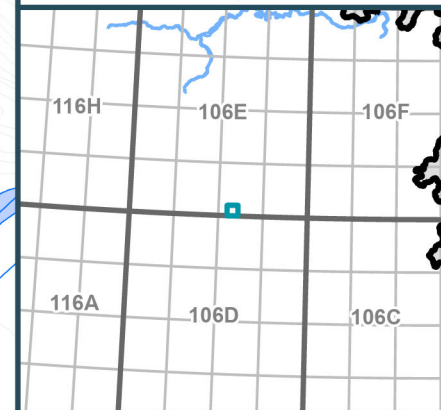
2023MA044

Scale: 1:27,000

Map Center: 134°50'30"W 65°1'31"N
NAD 1983 Yukon Albers

- Fire Perimeter
- Designated Morel Mushroom Areas
- Surveyed Land Parcels
- Easements
- Land Dispositions
- Parks and Campgrounds
- Parks and Protected Areas
- First Nation Settlement Lands - Surveyed
- Interim Protected Settlement Lands
- Rivers & Streams
- Wetlands
- Lakes

1:250,000 NTS Map Series Numbers



2023 Wildland Fires

May 2, 2024

Fire District:
Mayo

2023MA045

Scale: 1:55,000

Map Center: 134°54'9"W 64°11'20"N
NAD 1983 Yukon Albers

- Fire Perimeter
- Designated Morel Mushroom Areas
- Surveyed Land Parcels
- Easements
- Land Dispositions
- Parks and Campgrounds
- Parks and Protected Areas
- First Nation Settlement Lands - Surveyed
- Interim Protected Settlement Lands
- Rivers & Streams
- Wetlands
- Lakes

1:250,000 NTS Map Series Numbers



Mushroom
2023MA045
6022 ha.
2023MA045
6022 ha.

020400
Mètres: 1
Kilometres
Created by FMB-GIS | sidefore

2023 Wildland Fires

May 2, 2024

Fire District:
Mayo

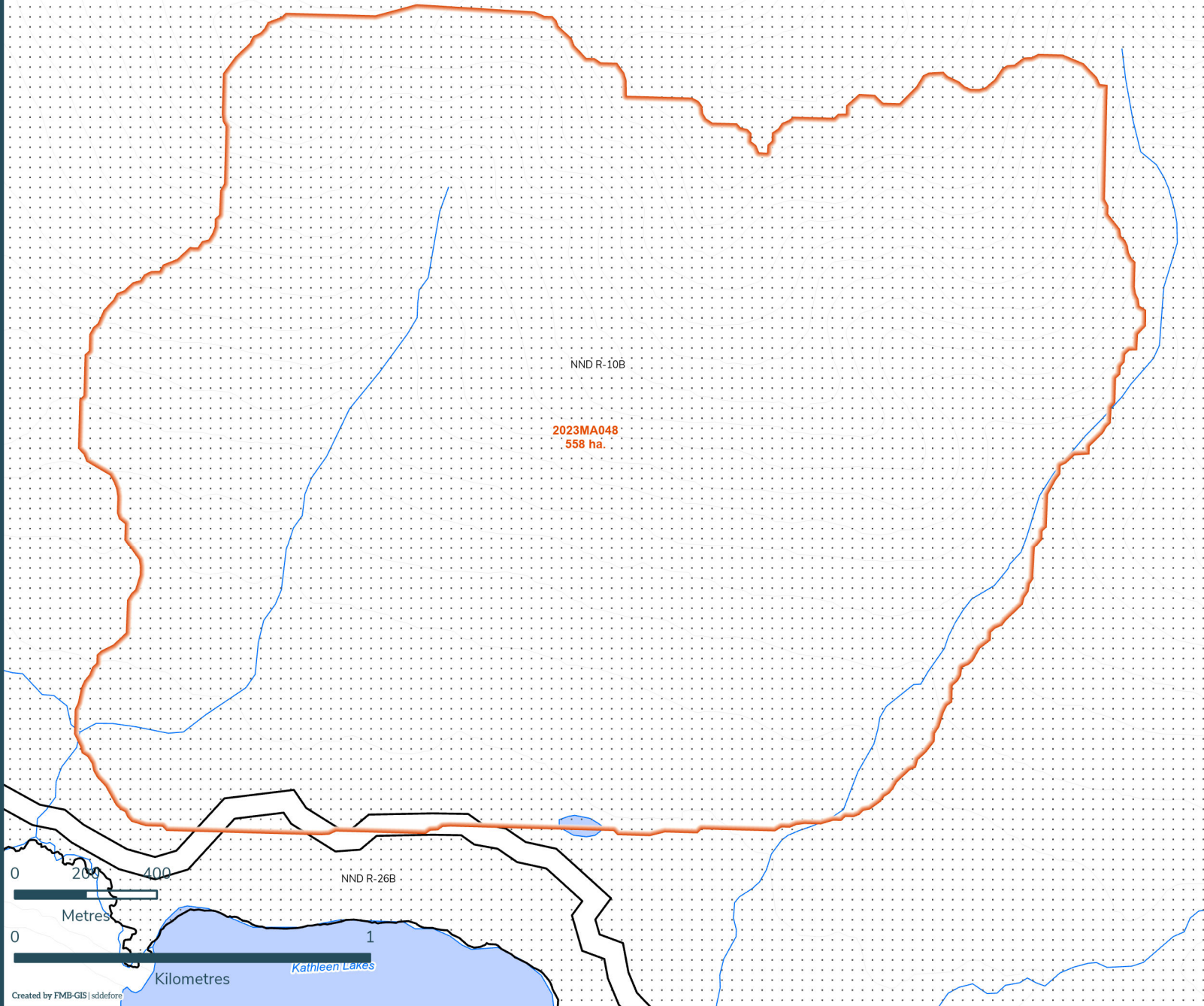
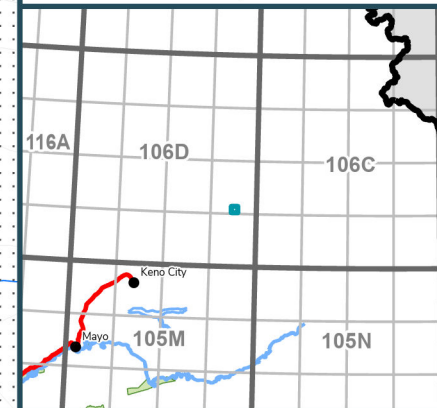
2023MA048

Scale: 1:16,000

Map Center: 134°14'19"W 64°16'13"N
NAD 1983 Yukon Albers

- Fire Perimeter
- Designated Morel Mushroom Areas
- Surveyed Land Parcels
- Easements
- Land Dispositions
- Parks and Campgrounds
- Parks and Protected Areas
- First Nation Settlement Lands - Surveyed
- Interim Protected Settlement Lands
- Rivers & Streams
- Wetlands
- Lakes

1:250,000 NTS Map Series Numbers



2023 Wildland Fires

May 2, 2024

Fire District:
Mayo

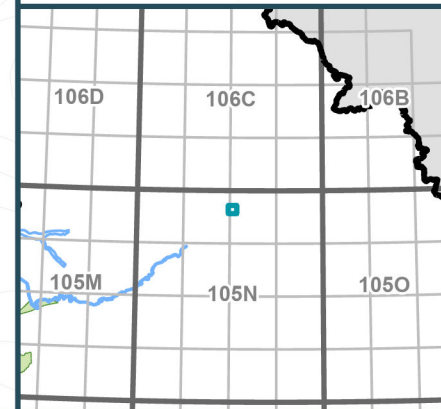
2023MA049

Scale: 1:21,000

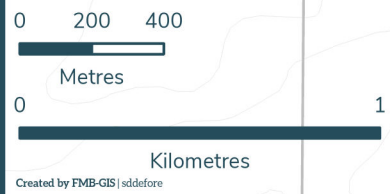
Map Center: 132°58'17"W 63°54'39"N
NAD 1983 Yukon Albers

- Fire Perimeter
- Designated Morel Mushroom Areas
- Surveyed Land Parcels
- Easements
- Land Dispositions
- Parks and Campgrounds
- Parks and Protected Areas
- First Nation Settlement Lands - Surveyed
- Interim Protected Settlement Lands
- Rivers & Streams
- Wetlands
- Lakes

1:250,000 NTS Map Series Numbers



Mushroom
2023MA049
990 ha.
2023MA049
990 ha.



2023 Wildland Fires













May 2, 2024

Fire District:
Mayo

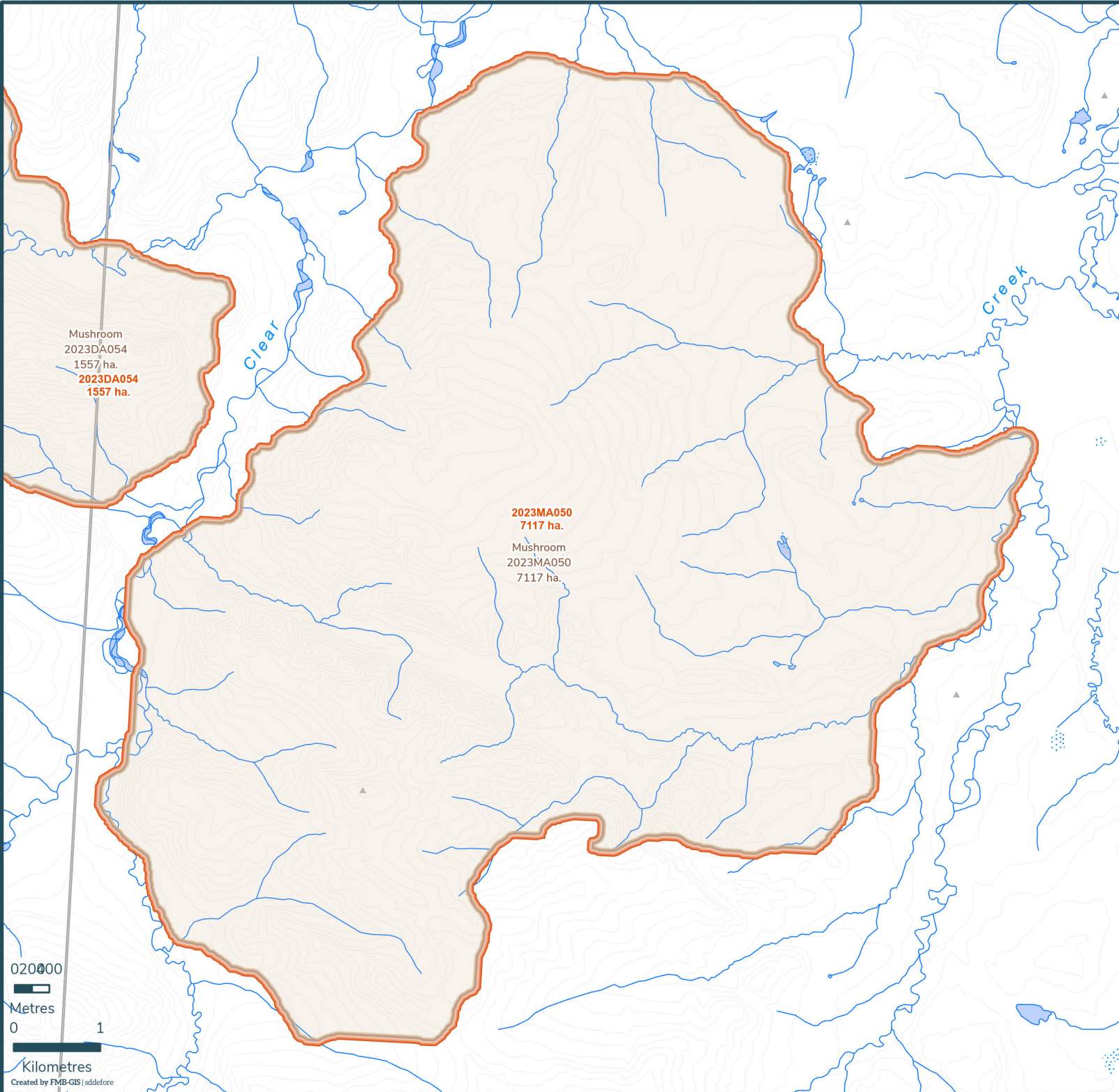
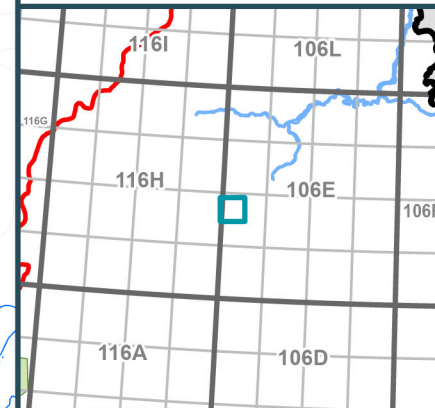
2023MA050

Scale: 1:61,000

Map Center: 135°52'52"W 65°25'22"N
NAD 1983 Yukon Albers

-  Fire Perimeter
-  Designated Morel Mushroom Areas
-  Surveyed Land Parcels
-  Easements
-  Land Dispositions
-  Parks and Campgrounds
-  Parks and Protected Areas
-  First Nation Settlement Lands - Surveyed
-  Interim Protected Settlement Lands
-  Rivers & Streams
-  Wetlands
-  Lakes

1:250,000 NTS Map Series Numbers



0 20000

Metres

1

Kilometres

Created by FMB-GIS | sdd@fore

2023 Wildland Fires

May 2, 2024

Fire District:
Mayo

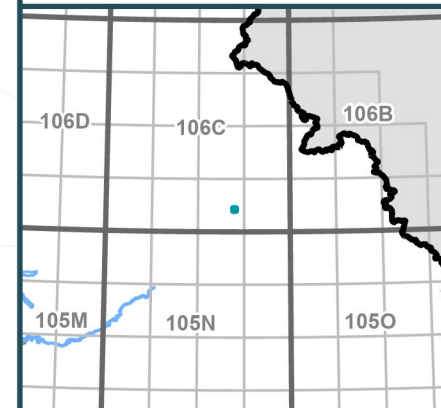
2023MA051

Scale: 1:9,000

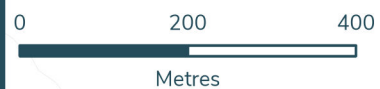
Map Center: 132°36'13"W 64°6'20"N
NAD 1983 Yukon Albers

- Fire Perimeter
- Designated Morel Mushroom Areas
- Surveyed Land Parcels
- Easements
- Land Dispositions
- Parks and Campgrounds
- Parks and Protected Areas
- First Nation Settlement Lands - Surveyed
- Interim Protected Settlement Lands
- Rivers & Streams
- Wetlands
- Lakes

1:250,000 NTS Map Series Numbers



Mushroom
2023MA051
136 ha.
2023MA051
136 ha.



2023 Wildland Fires

May 2, 2024

Fire District:
Mayo

2023MA052

Scale: 1:10,000

Map Center: 133°47'36"W 63°44'41"N
NAD 1983 Yukon Albers

- Fire Perimeter
- Designated Morel Mushroom Areas
- Surveyed Land Parcels
- Easements
- Land Dispositions
- Parks and Campgrounds
- Parks and Protected Areas
- First Nation Settlement Lands - Surveyed
- Interim Protected Settlement Lands
- Rivers & Streams
- Wetlands
- Lakes

1:250,000 NTS Map Series Numbers

