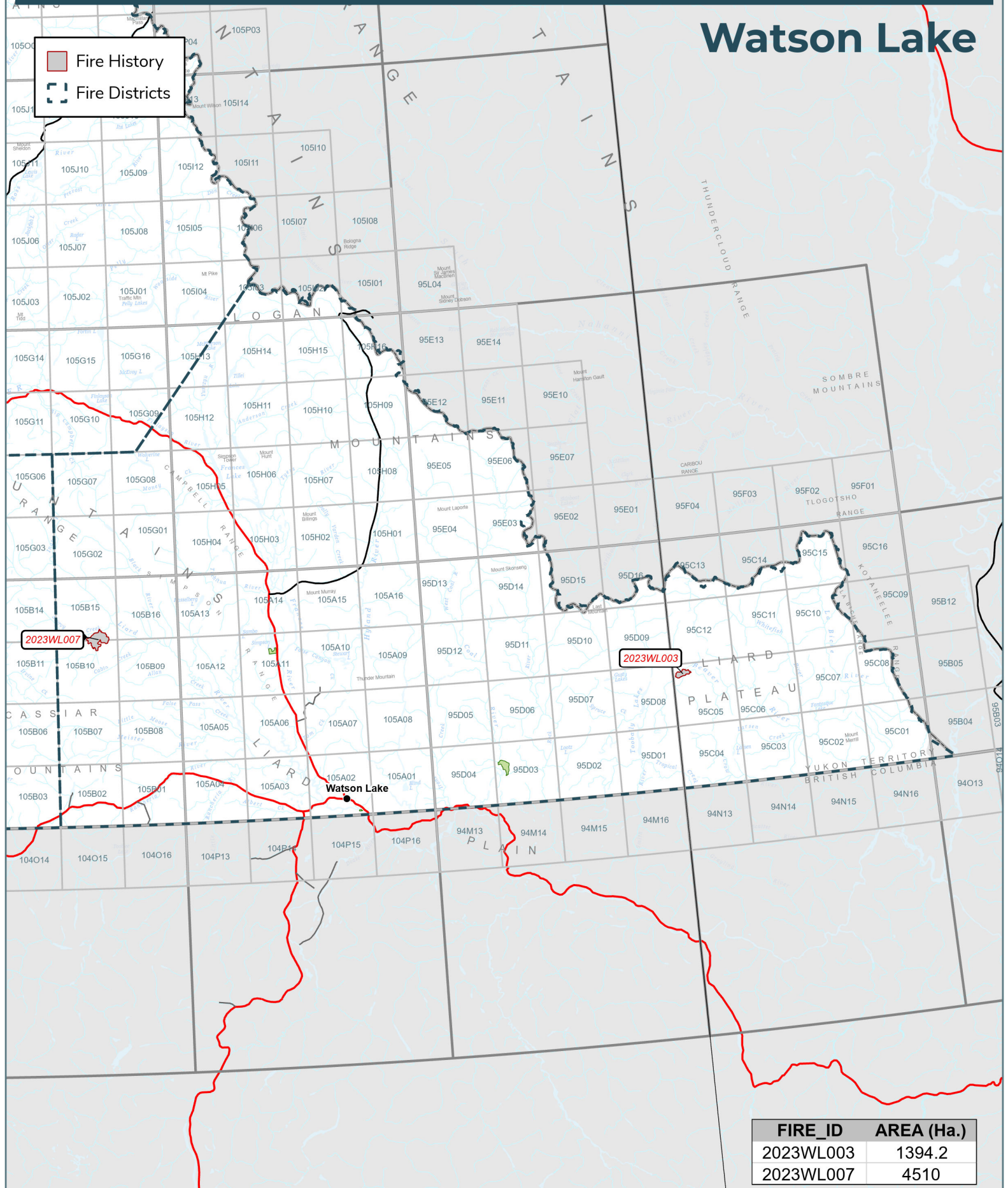


## Watson Lake

■ Fire History  
□ Fire Districts



2023WL007

2023WL003

Watson Lake

FIRE_ID	AREA (Ha.)
2023WL003	1394.2
2023WL007	4510

# 2023 Wildland Fires

May 2, 2024

Fire District:  
Watson Lake

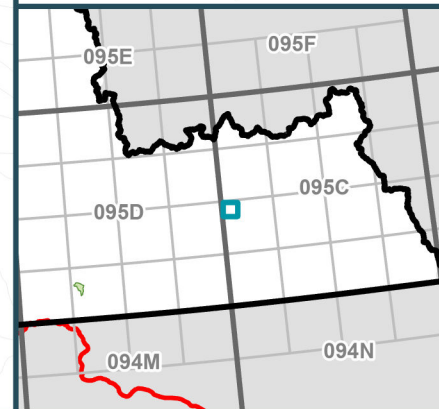
**2023WL003**

Scale: 1:36,000

Map Center: 125°54'56"W 60°27'28"N  
NAD 1983 Yukon Albers

- Fire Perimeter
- Designated Morel Mushroom Areas
- Surveyed Land Parcels
- Easements
- Land Dispositions
- Parks and Campgrounds
- Parks and Protected Areas
- First Nation Settlement Lands - Surveyed
- Interim Protected Settlement Lands
- Rivers & Streams
- Wetlands
- Lakes

1:250,000 NTS Map Series Numbers



**2023WL003**  
1394 ha.

Mushroom  
2023WL003  
1394 ha.

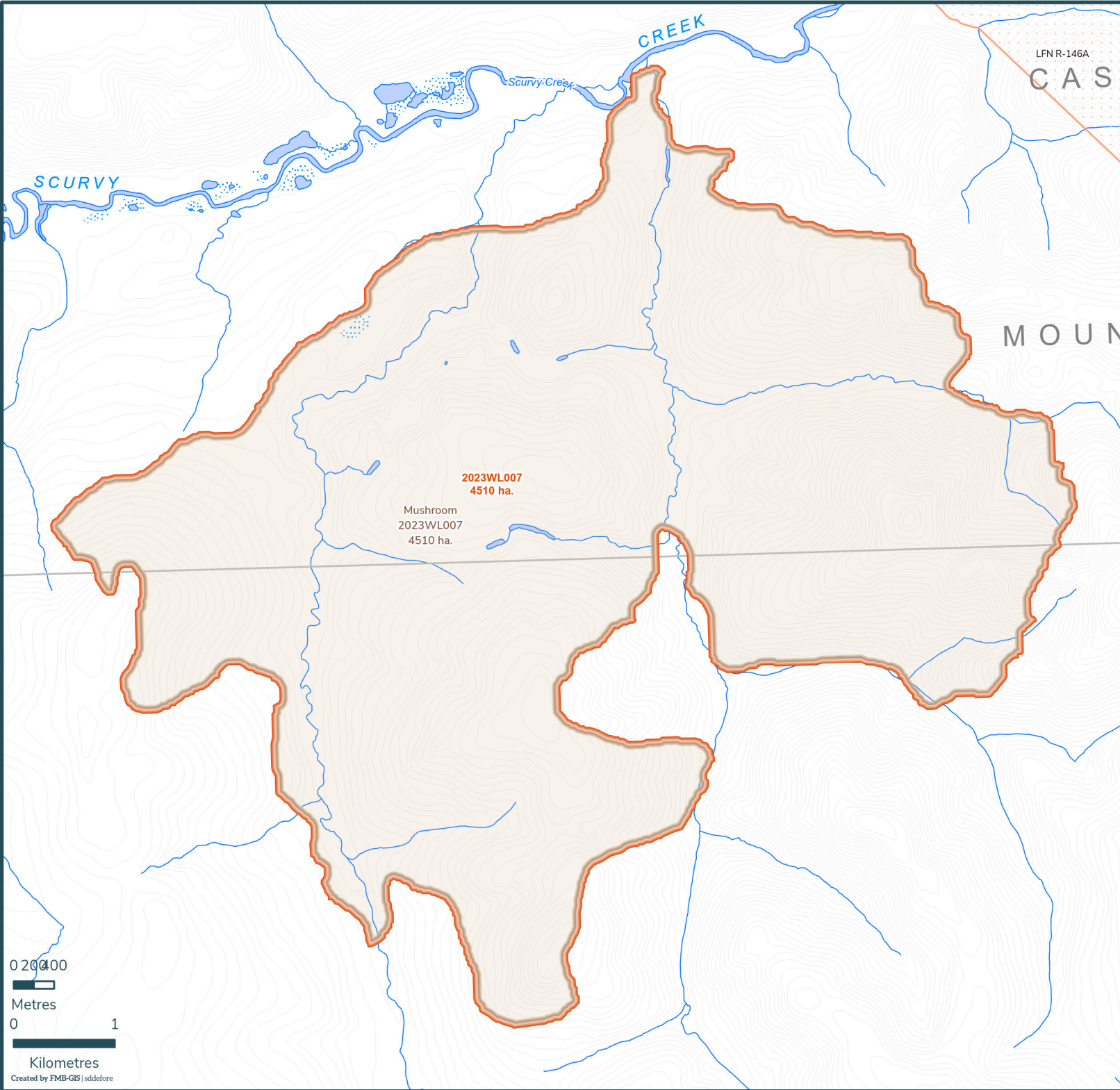
Beaver River

0 200 400

Metres

0 1

Kilometres



# 2023 Wildland Fires

May 2, 2024

Fire District:  
Watson Lake

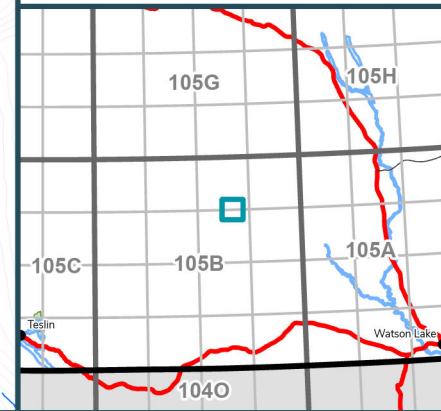
**2023WL007**

Scale: 1:52,000

Map Center: 130°39'43"W 60°45'4"N  
NAD 1983 Yukon Albers

-  Fire Perimeter
-  Designated Morel Mushroom Areas
-  Surveyed Land Parcels
-  Easements
-  Land Dispositions
-  Parks and Campgrounds
-  Parks and Protected Areas
-  First Nation Settlement Lands - Surveyed
-  Interim Protected Settlement Lands
-  Rivers & Streams
-  Wetlands
-  Lakes

1:250,000 NTS Map Series Numbers



0 200 400  
Metres  
0 1  
Kilometres  
Created by FMB-GIS | sdd@fore