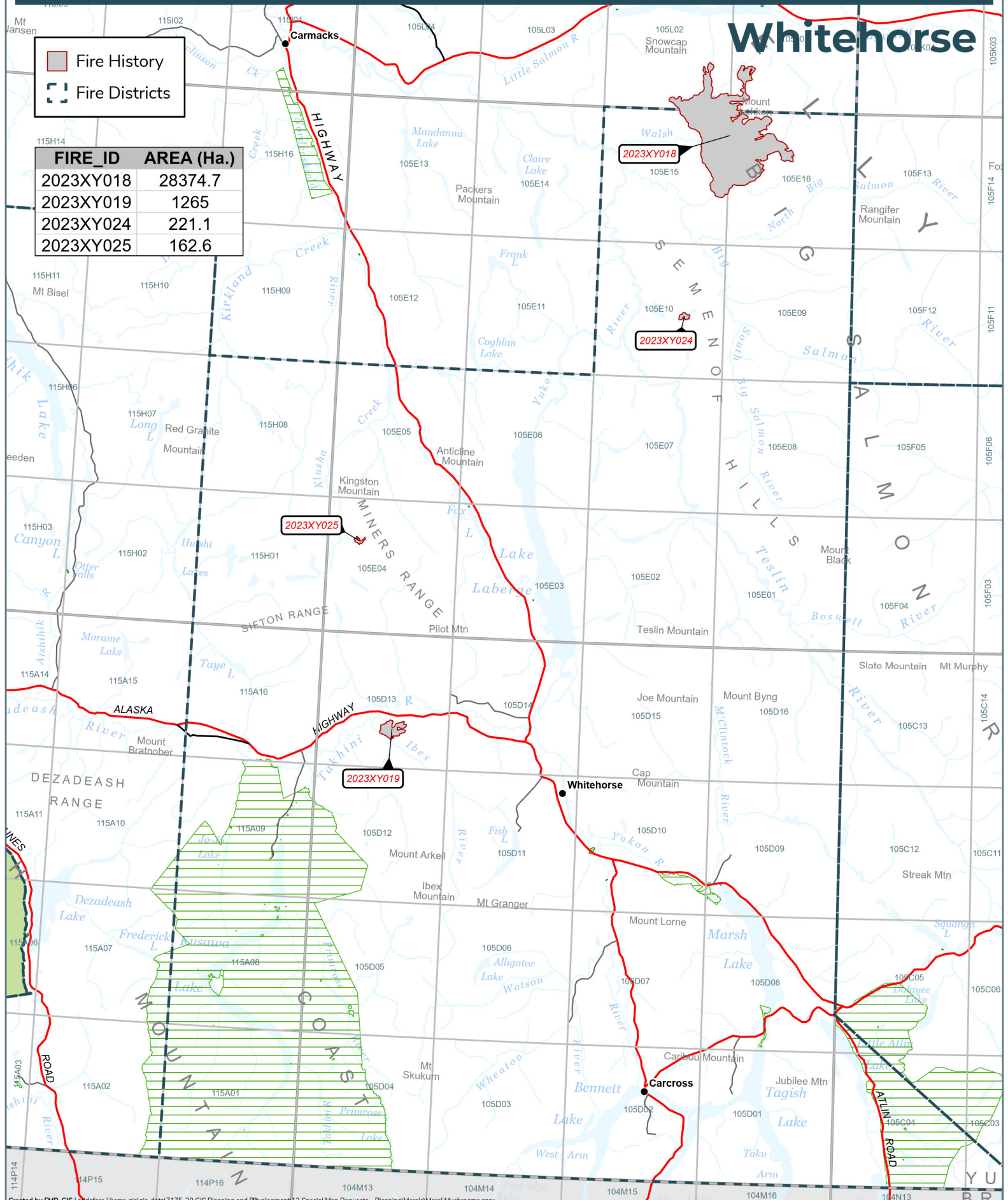


Whitehorse

Fire History
 Fire Districts

FIRE_ID	AREA (Ha.)
2023XY018	28374.7
2023XY019	1265
2023XY024	221.1
2023XY025	162.6



2023 Wildland Fires

May 2, 2024

Fire District:
Whitehorse

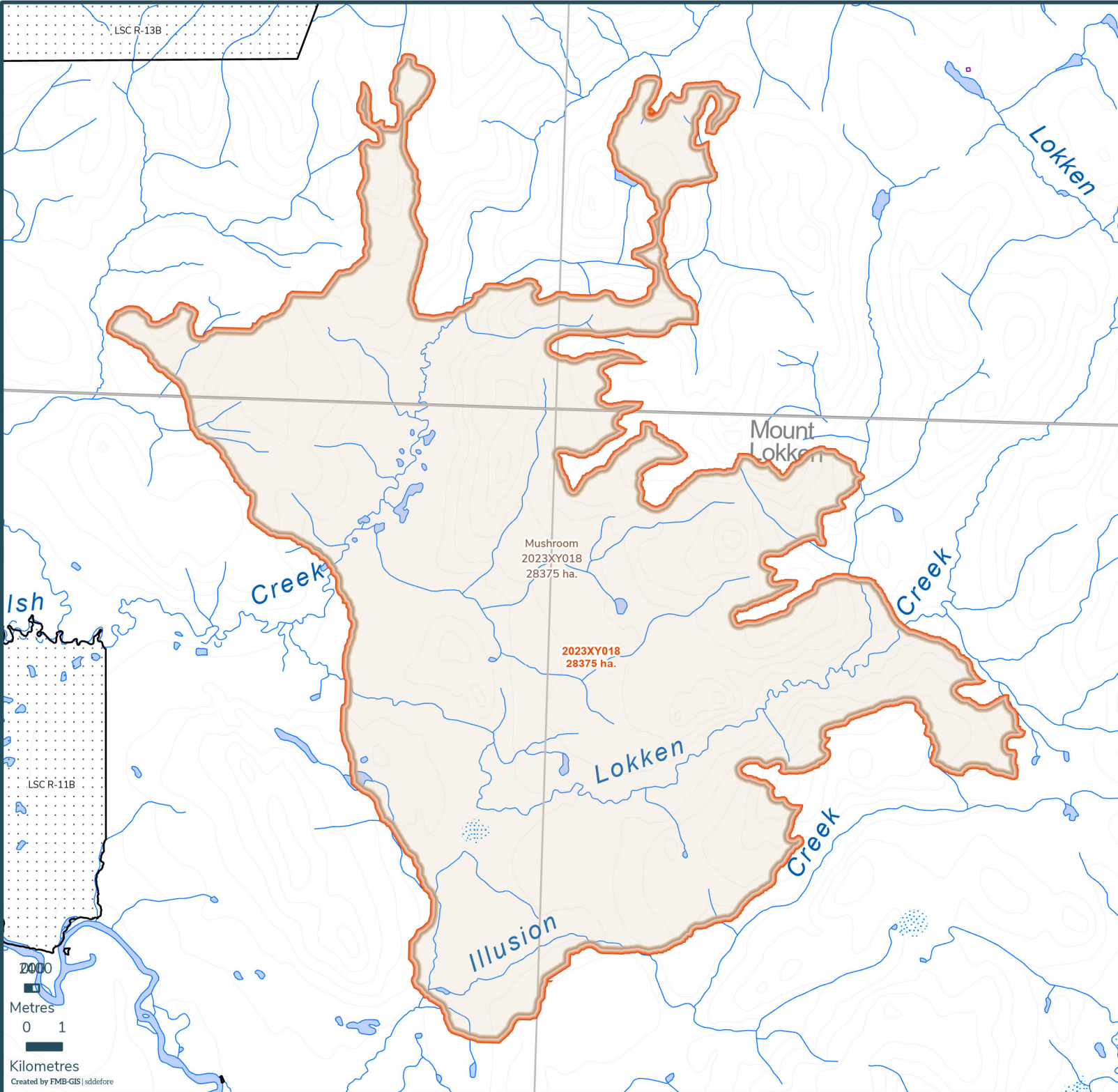
2023XY018

Scale: 1:149,000

Map Center: 134°29'33"W 61°57'53"N
NAD 1983 Yukon Albers

- Fire Perimeter
- Designated Morel Mushroom Areas
- Surveyed Land Parcels
- Easements
- Land Dispositions
- Parks and Campgrounds
- Parks and Protected Areas
- First Nation Settlement Lands - Surveyed
- Interim Protected Settlement Lands
- Rivers & Streams
- Wetlands
- Lakes

1:250,000 NTS Map Series Numbers



LSC R-13B

LSC R-11B

2000

Metres

0 1

Kilometres

Created by FMB-GIS | sddfore

2023 Wildland Fires



May 2, 2024

Fire District:
Whitehorse

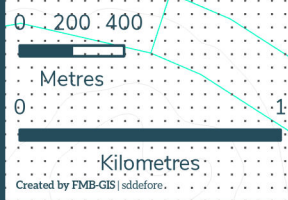
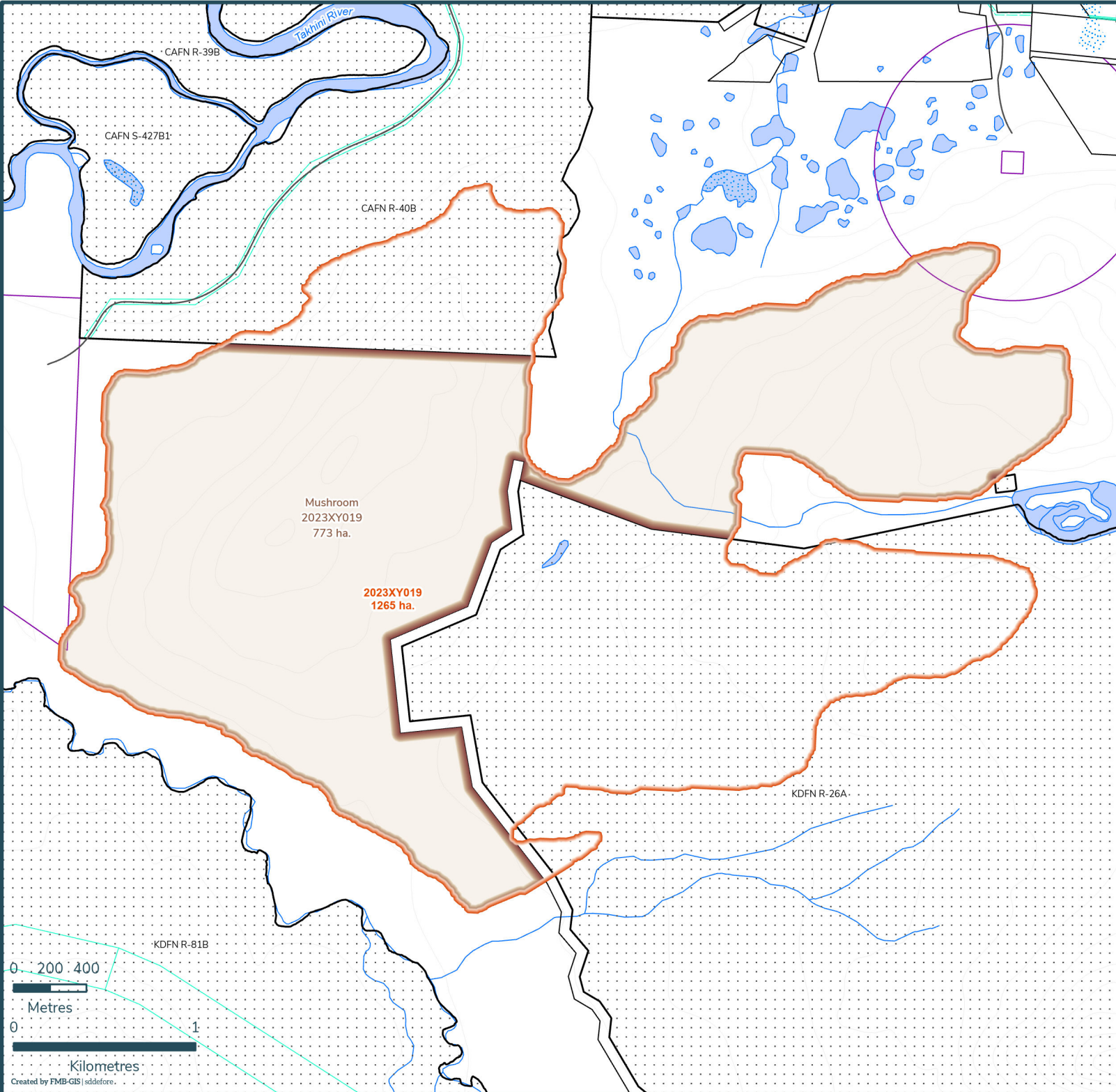
2023XY019

Scale: 1:29,000

Map Center: 135°42'43"W 60°49'18"N
NAD 1983 Yukon Albers

-  Fire Perimeter
-  Designated Morel Mushroom Areas
-  Surveyed Land Parcels
-  Easements
-  Land Dispositions
-  Parks and Campgrounds
-  Parks and Protected Areas
-  First Nation Settlement Lands - Surveyed
-  Interim Protected Settlement Lands
-  Rivers & Streams
-  Wetlands
-  Lakes

1:250,000 NTS Map Series Numbers



2023 Wildland Fires

May 2, 2024

Fire District:
Whitehorse

2023XY024

Scale: 1:12,000

Map Center: 134°39'16"W 61°36'56"N
NAD 1983 Yukon Albers

- Fire Perimeter
- Designated Morel Mushroom Areas
- Surveyed Land Parcels
- Easements
- Land Dispositions
- Parks and Campgrounds
- Parks and Protected Areas
- First Nation Settlement Lands - Surveyed
- Interim Protected Settlement Lands
- Rivers & Streams
- Wetlands
- Lakes

1:250,000 NTS Map Series Numbers



2023XY024
221 ha.
Mushroom
2023XY024
221 ha.



2023 Wildland Fires












May 2, 2024

Fire District:
Whitehorse

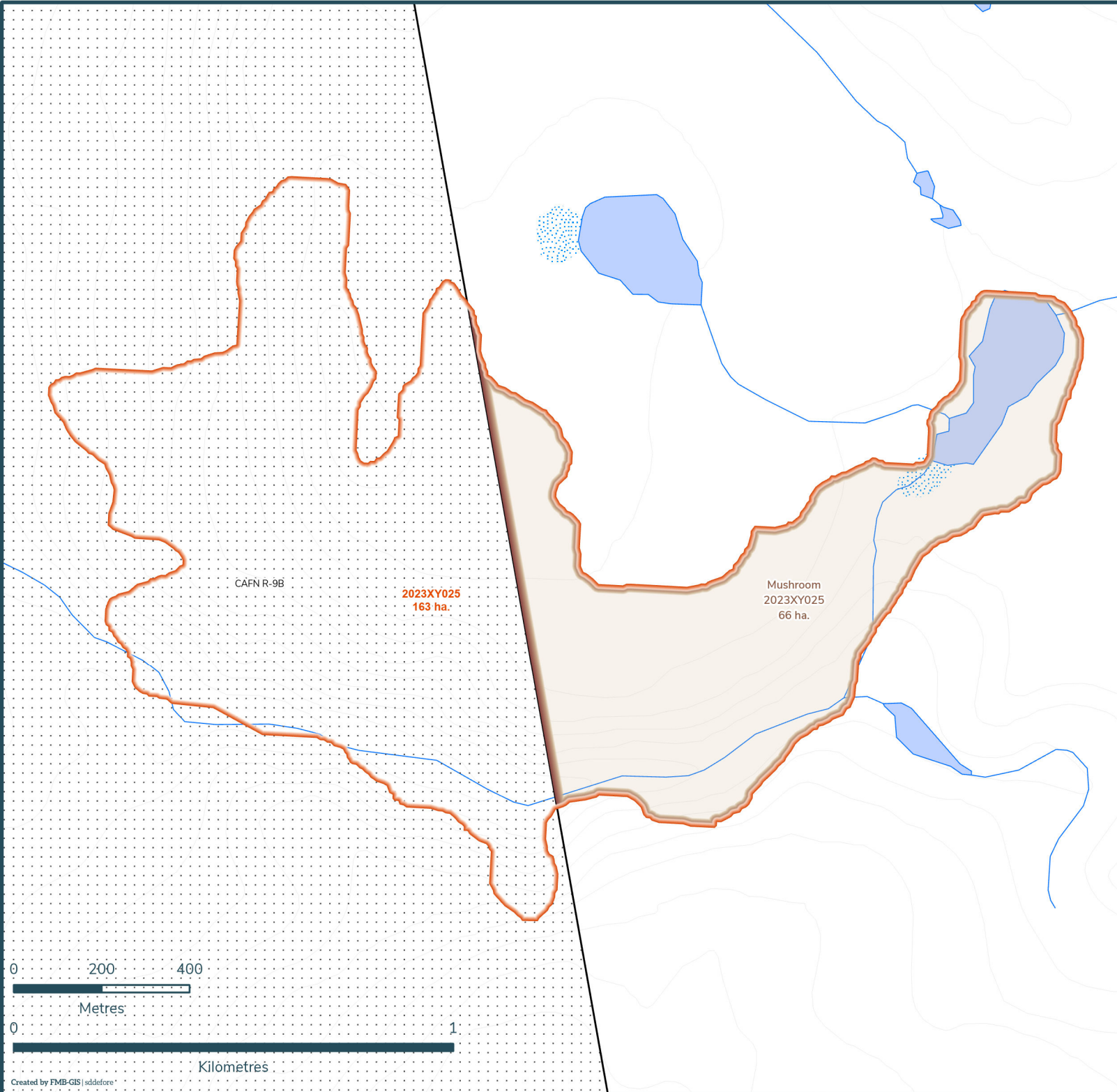
2023XY025

Scale: 1:12,000

Map Center: 135°52'36"W 61°10'18"N
NAD 1983 Yukon Albers

-  Fire Perimeter
-  Designated Morel Mushroom Areas
-  Surveyed Land Parcels
-  Easements
-  Land Dispositions
-  Parks and Campgrounds
-  Parks and Protected Areas
-  First Nation Settlement Lands - Surveyed
-  Interim Protected Settlement Lands
-  Rivers & Streams
-  Wetlands
-  Lakes

1:250,000 NTS Map Series Numbers



0 200 400
Metres

0 1
Kilometres