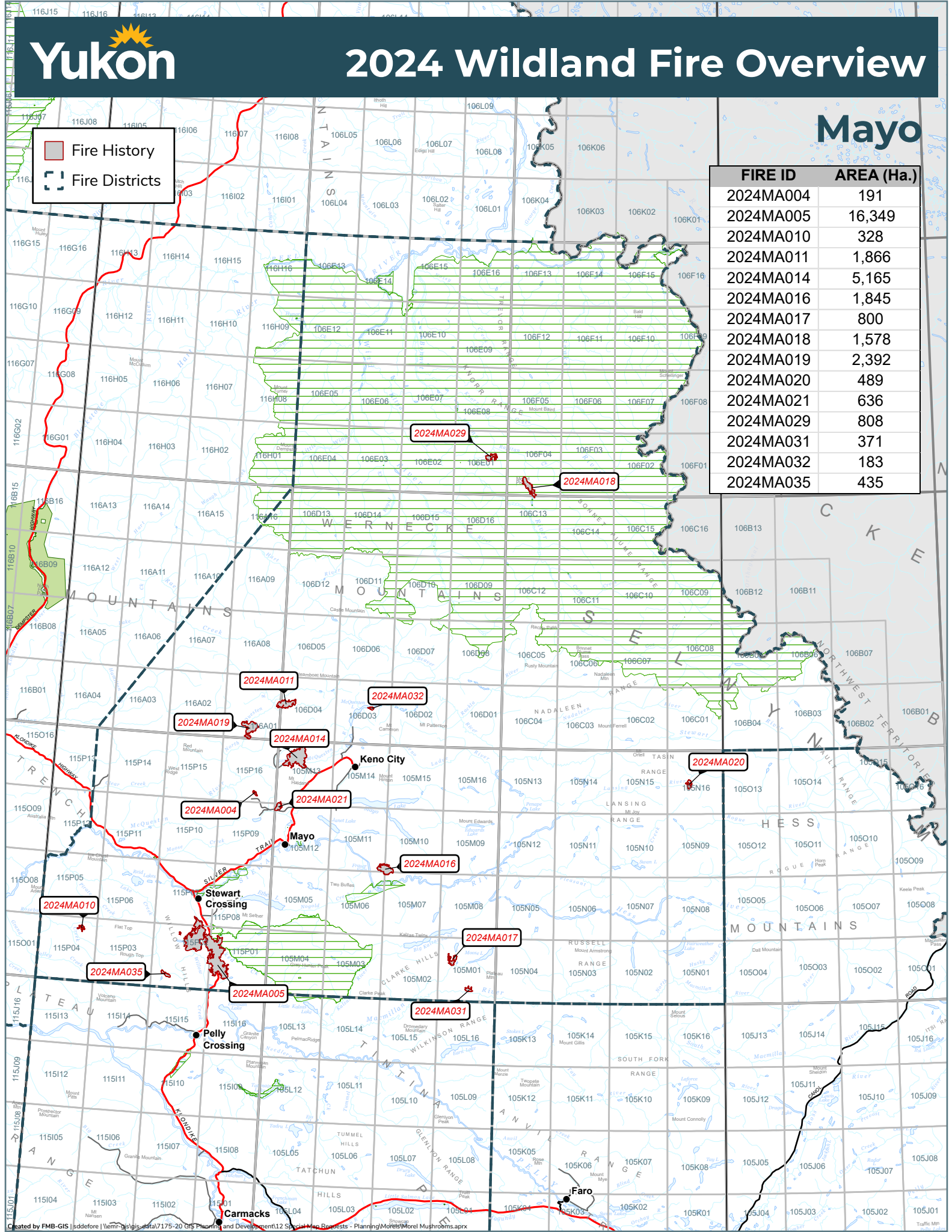


■ Fire History  
□ Fire Districts

FIRE ID	AREA (Ha.)
2024MA004	191
2024MA005	16,349
2024MA010	328
2024MA011	1,866
2024MA014	5,165
2024MA016	1,845
2024MA017	800
2024MA018	1,578
2024MA019	2,392
2024MA020	489
2024MA021	636
2024MA029	808
2024MA031	371
2024MA032	183
2024MA035	435





## 2024 Wildland Fires

February 12, 2025

FIRE DISTRICT: MAYO

FIRE NAME: AVALANCHE CREEK

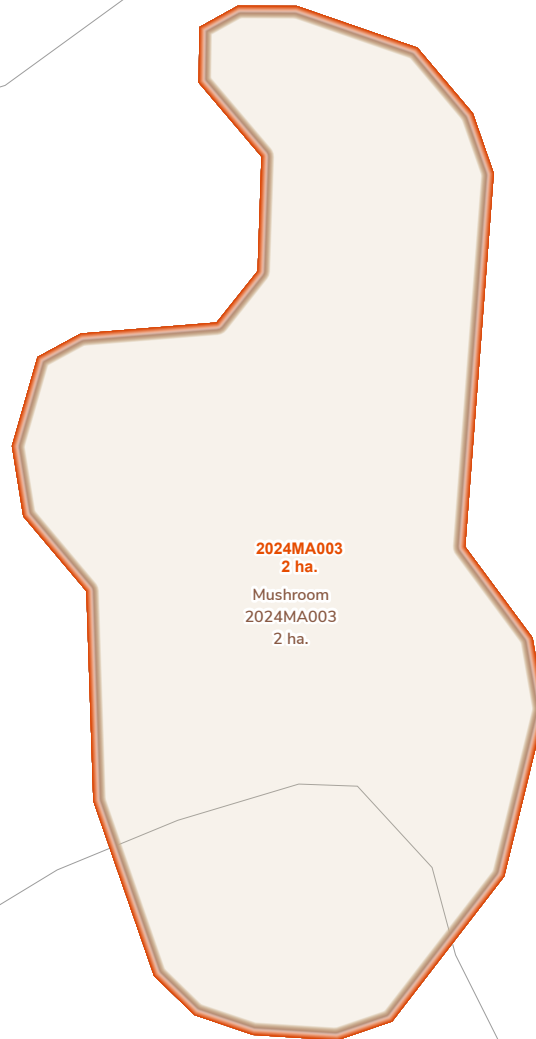
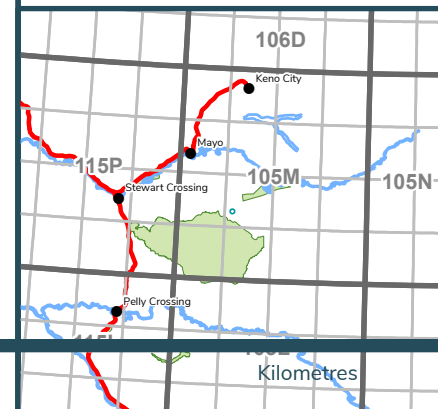
**2024MA003**

Scale: 1:2,000

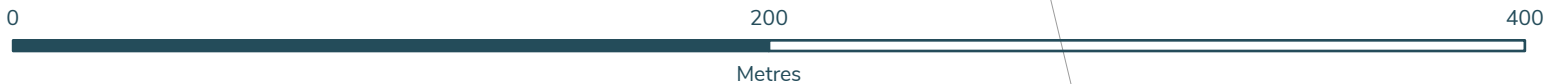
Map Center: 135°25'10"W 63°19'30"N  
NAD 1983 Yukon Albers

- Fire Perimeter
- Designated Morel Mushroom Areas
- Surveyed Land Parcels
- Easements
- Land Dispositions
- Parks and Campgrounds
- Parks and Protected Areas
- First Nation Settlement Lands - Surveyed
- Interim Protected Settlement Lands
- Rivers & Streams
- Wetlands
- Lakes

1:250,000 NTS Map Series Numbers



**2024MA003**  
2 ha.  
Mushroom  
2024MA003  
2 ha.



## 2024 Wildland Fires

February 12, 2025

FIRE DISTRICT: MAYO

FIRE NAME: RUDOLPH GULCH

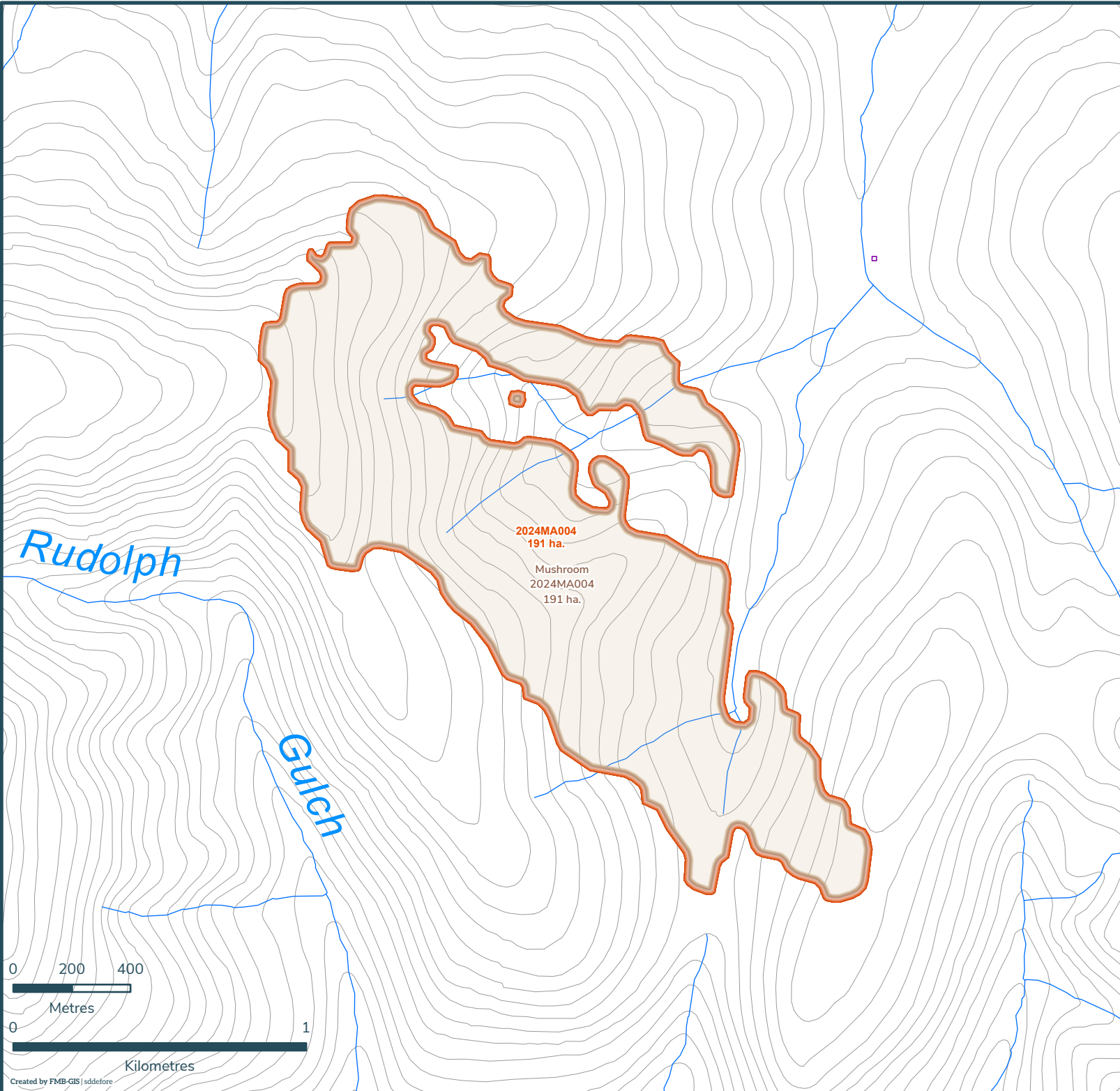
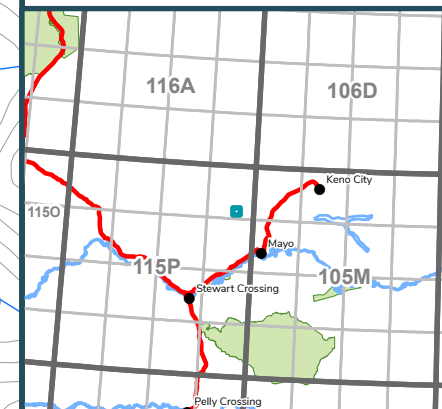
**2024MA004**

Scale: 1:18,000

Map Center: 136°11'10"W 63°47'7"N  
NAD 1983 Yukon Albers

- Fire Perimeter
- Designated Morel Mushroom Areas
- Surveyed Land Parcels
- Easements
- Land Dispositions
- Parks and Campgrounds
- Parks and Protected Areas
- First Nation Settlement Lands - Surveyed
- Interim Protected Settlement Lands
- Rivers & Streams
- Wetlands
- Lakes

1:250,000 NTS Map Series Numbers

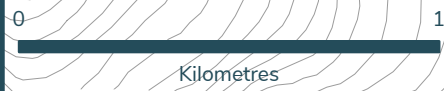
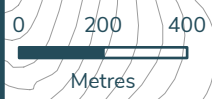


Rudolph

Gulch

2024MA004  
191 ha.

Mushroom  
2024MA004  
191 ha.



## 2024 Wildland Fires

February 12, 2025

FIRE DISTRICT: MAYO

FIRE NAME: WILLOW CREEK

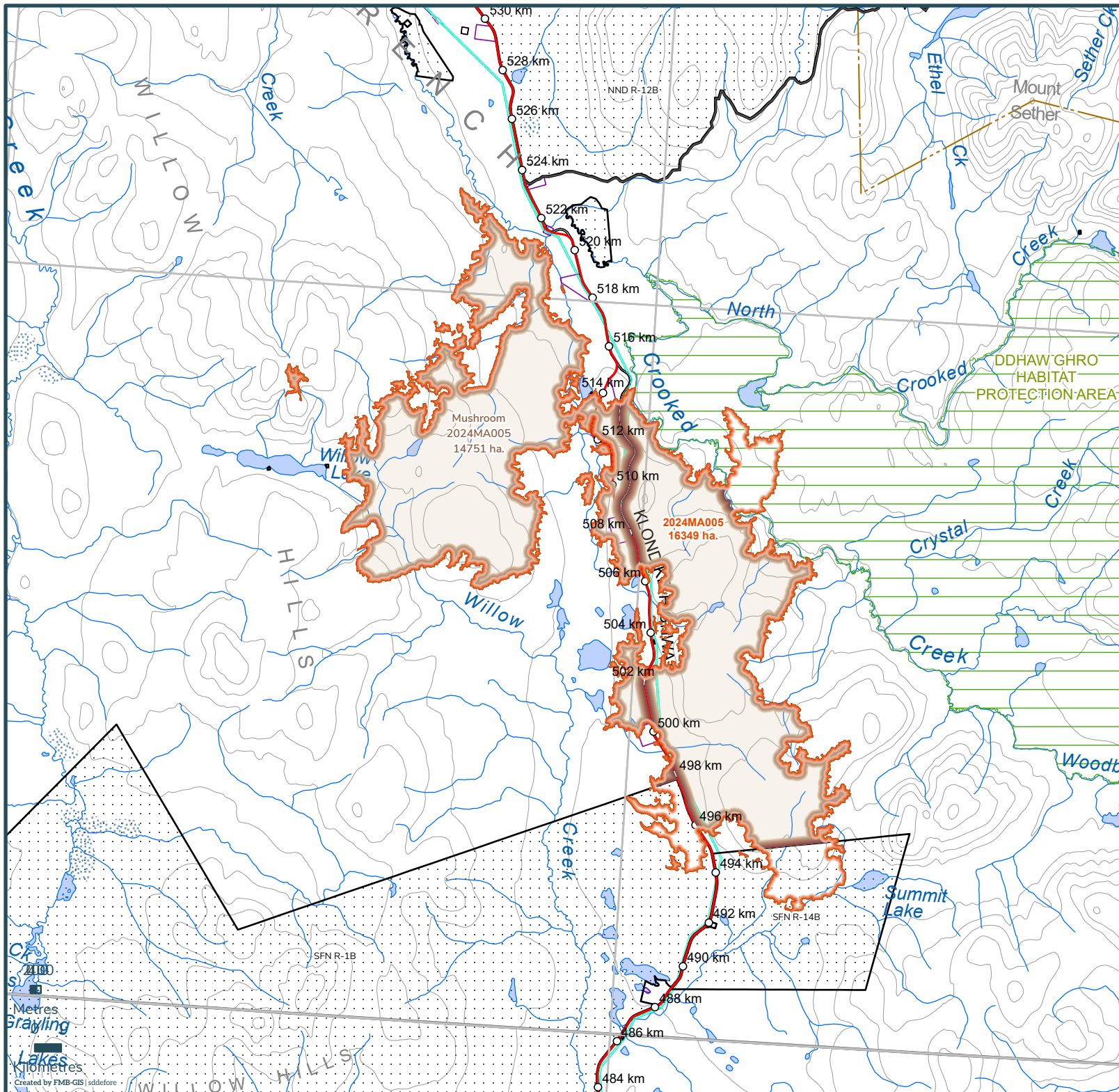
**2024MA005**

Scale: 1:201,000

Map Center: 136°33'18"W 63°9'52"N  
NAD 1983 Yukon Albers

- Fire Perimeter
- Designated Morel Mushroom Areas
- Surveyed Land Parcels
- Easements
- Land Dispositions
- Parks and Campgrounds
- Parks and Protected Areas
- First Nation Settlement Lands - Surveyed
- Interim Protected Settlement Lands
- Rivers & Streams
- Wetlands
- Lakes

1:250,000 NTS Map Series Numbers



# 2024 Wildland Fires

February 12, 2025

FIRE DISTRICT: MAYO

FIRE NAME: BARR CREEK

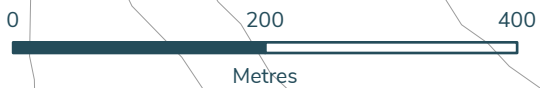
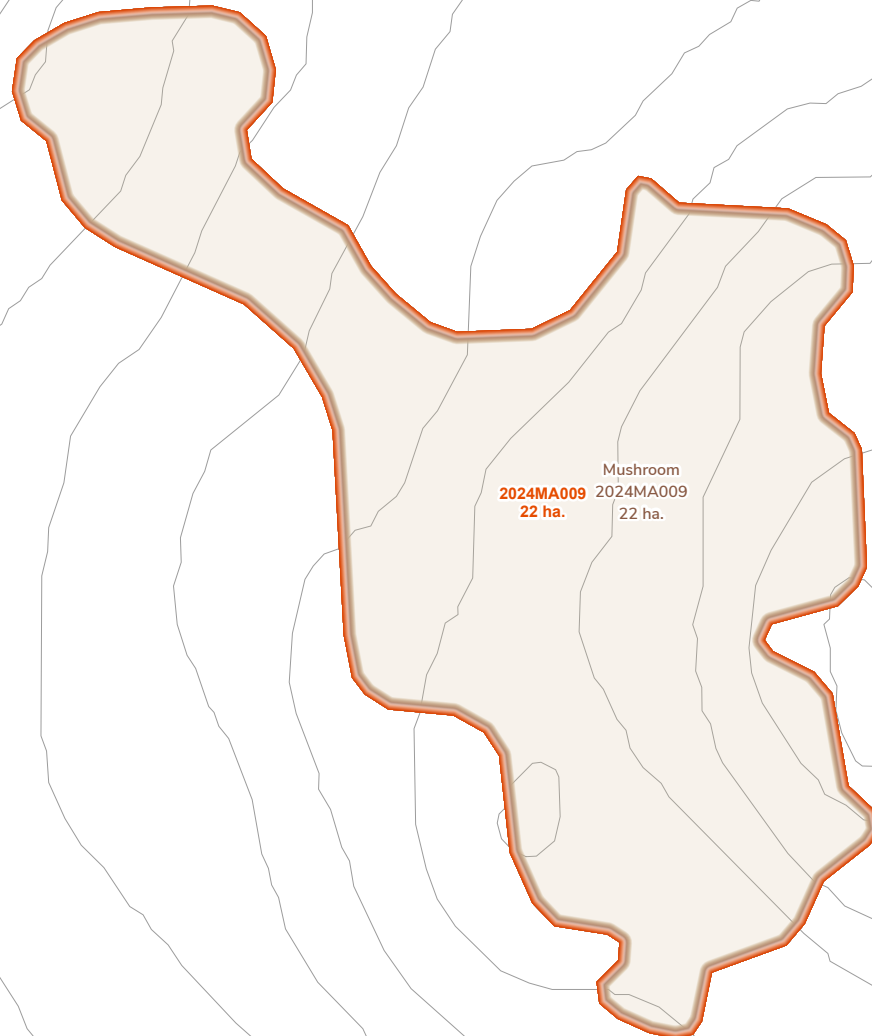
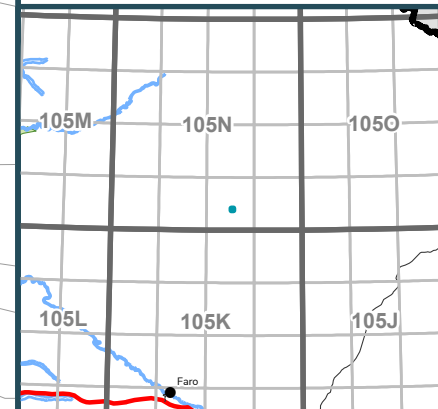
**2024MA009**

Scale: 1:6,000

Map Center: 132°43'39"W 63°5'56"N  
NAD 1983 Yukon Albers

- Fire Perimeter
- Designated Morel Mushroom Areas
- Surveyed Land Parcels
- Easements
- Land Dispositions
- Parks and Campgrounds
- Parks and Protected Areas
- First Nation Settlement Lands - Surveyed
- Interim Protected Settlement Lands
- Rivers & Streams
- Wetlands
- Lakes

1:250,000 NTS Map Series Numbers



# 2024 Wildland Fires

February 12, 2025

FIRE DISTRICT: MAYO

FIRE NAME: ROSEBUD CREEK

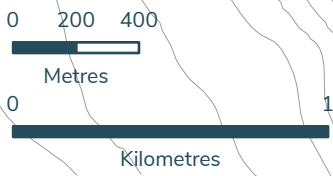
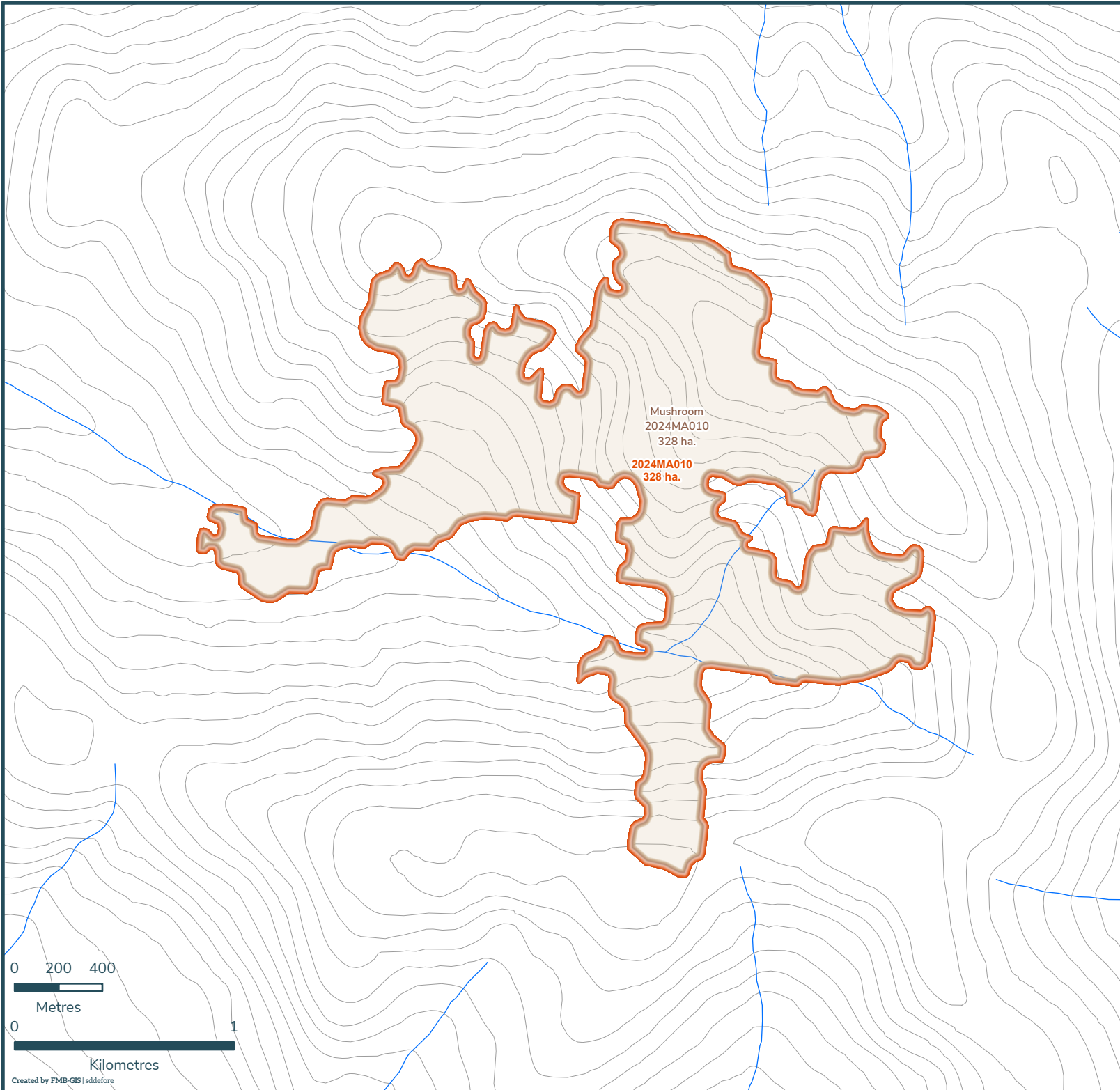
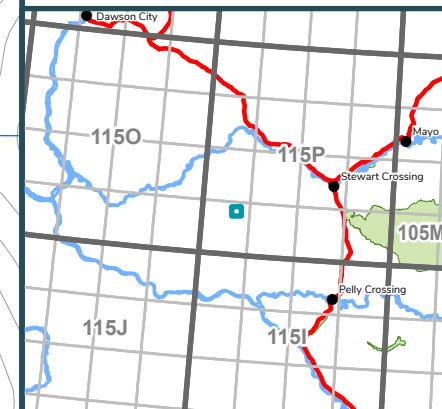
**2024MA010**

Scale: 1:24,000

Map Center: 137°38'19"W 63°12'23"N  
NAD 1983 Yukon Albers

- Fire Perimeter
- Designated Morel Mushroom Areas
- Surveyed Land Parcels
- Easements
- Land Dispositions
- Parks and Campgrounds
- Parks and Protected Areas
- First Nation Settlement Lands - Surveyed
- Interim Protected Settlement Lands
- Rivers & Streams
- Wetlands
- Lakes

1:250,000 NTS Map Series Numbers



## 2024 Wildland Fires

February 12, 2025




FIRE DISTRICT: MAYO

FIRE NAME: CHRISTIE CREEK

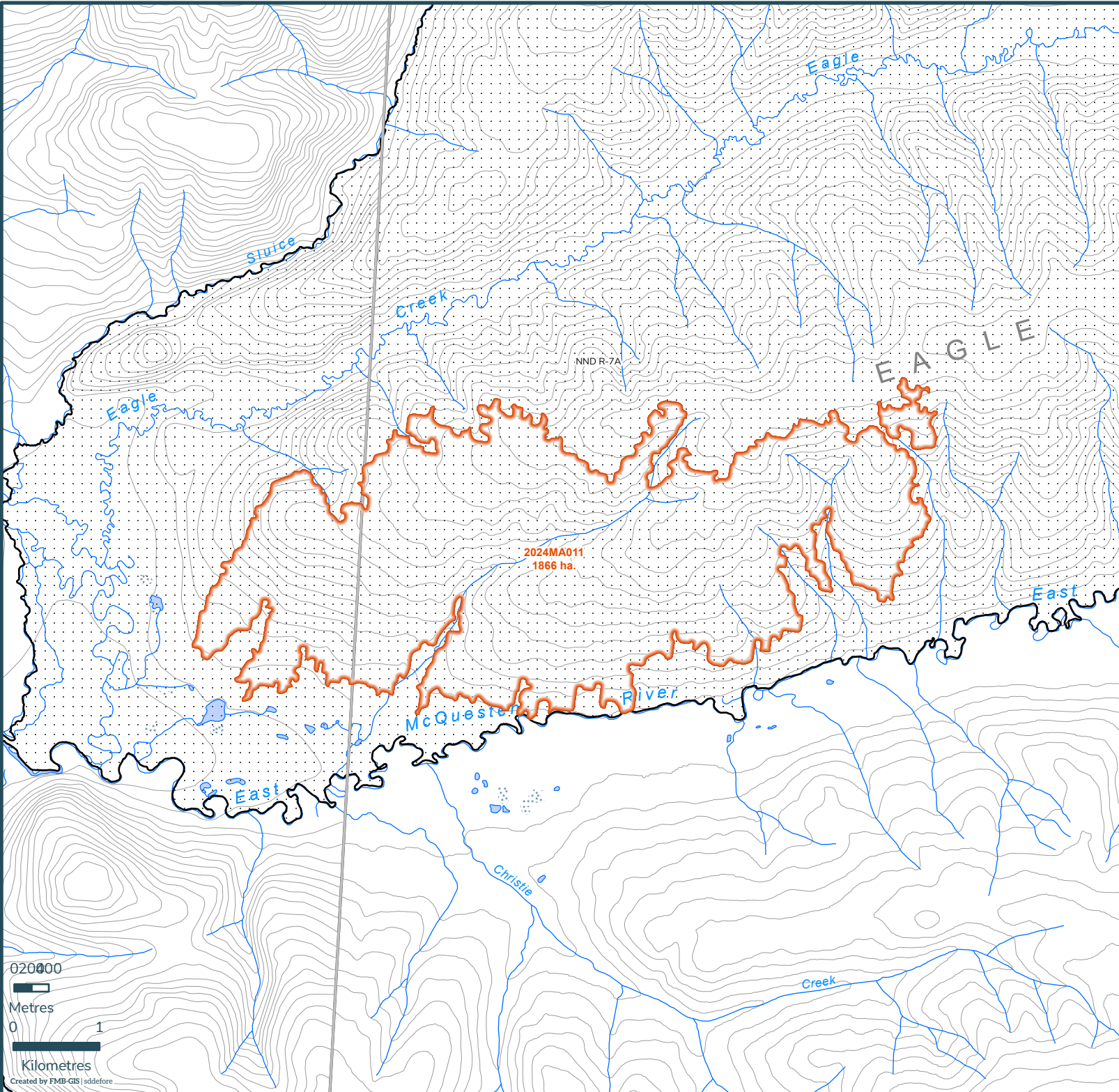
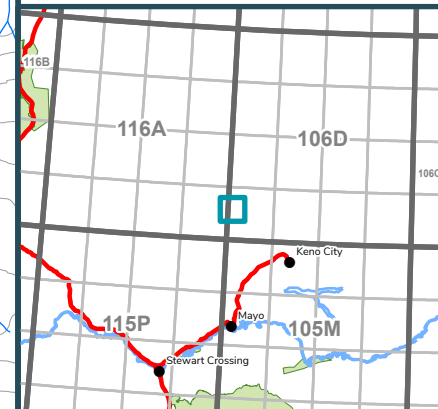
**2024MA011**

Scale: 1:61,000

Map Center: 135°57'5"W 64°8'40"N  
NAD 1983 Yukon Albers

-  Fire Perimeter
-  Designated Morel Mushroom Areas
-  Surveyed Land Parcels
-  Easements
-  Land Dispositions
-  Parks and Campgrounds
-  Parks and Protected Areas
-  First Nation Settlement Lands - Surveyed
-  Interim Protected Settlement Lands
-  Rivers & Streams
-  Wetlands
-  Lakes

1:250,000 NTS Map Series Numbers



0 20000  
Metres  
0 1  
Kilometres  
Created by FMB-GIS | sddfore

## 2024 Wildland Fires

February 12, 2025



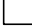









FIRE DISTRICT: MAYO

FIRE NAME: SHANGHAI CREEK

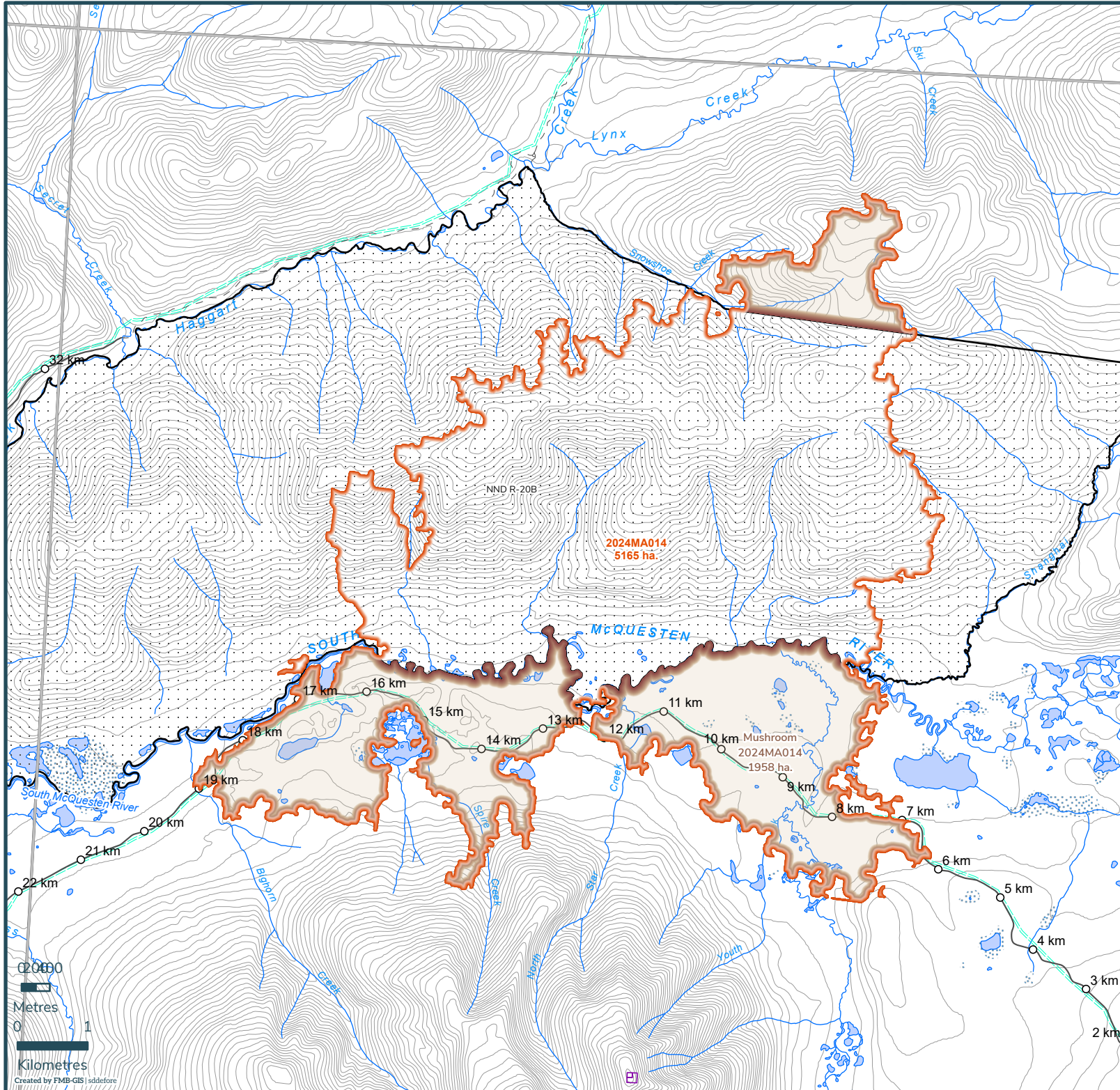
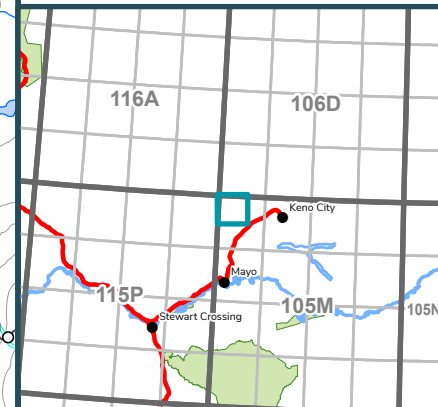
**2024MA014**

Scale: 1:75,000

Map Center: 135°50'57"W 63°56'14"N  
NAD 1983 Yukon Albers

-  Fire Perimeter
-  Designated Morel Mushroom Areas
-  Surveyed Land Parcels
-  Easements
-  Land Dispositions
-  Parks and Campgrounds
-  Parks and Protected Areas
-  First Nation Settlement Lands - Surveyed
-  Interim Protected Settlement Lands
-  Rivers & Streams
-  Wetlands
-  Lakes

1:250,000 NTS Map Series Numbers



0 20000  
Metres  
0 1  
Kilometres

# 2024 Wildland Fires

February 12, 2025

FIRE DISTRICT: MAYO

FIRE NAME: JOHNSON CREEK

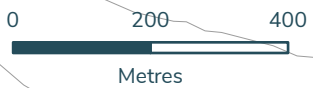
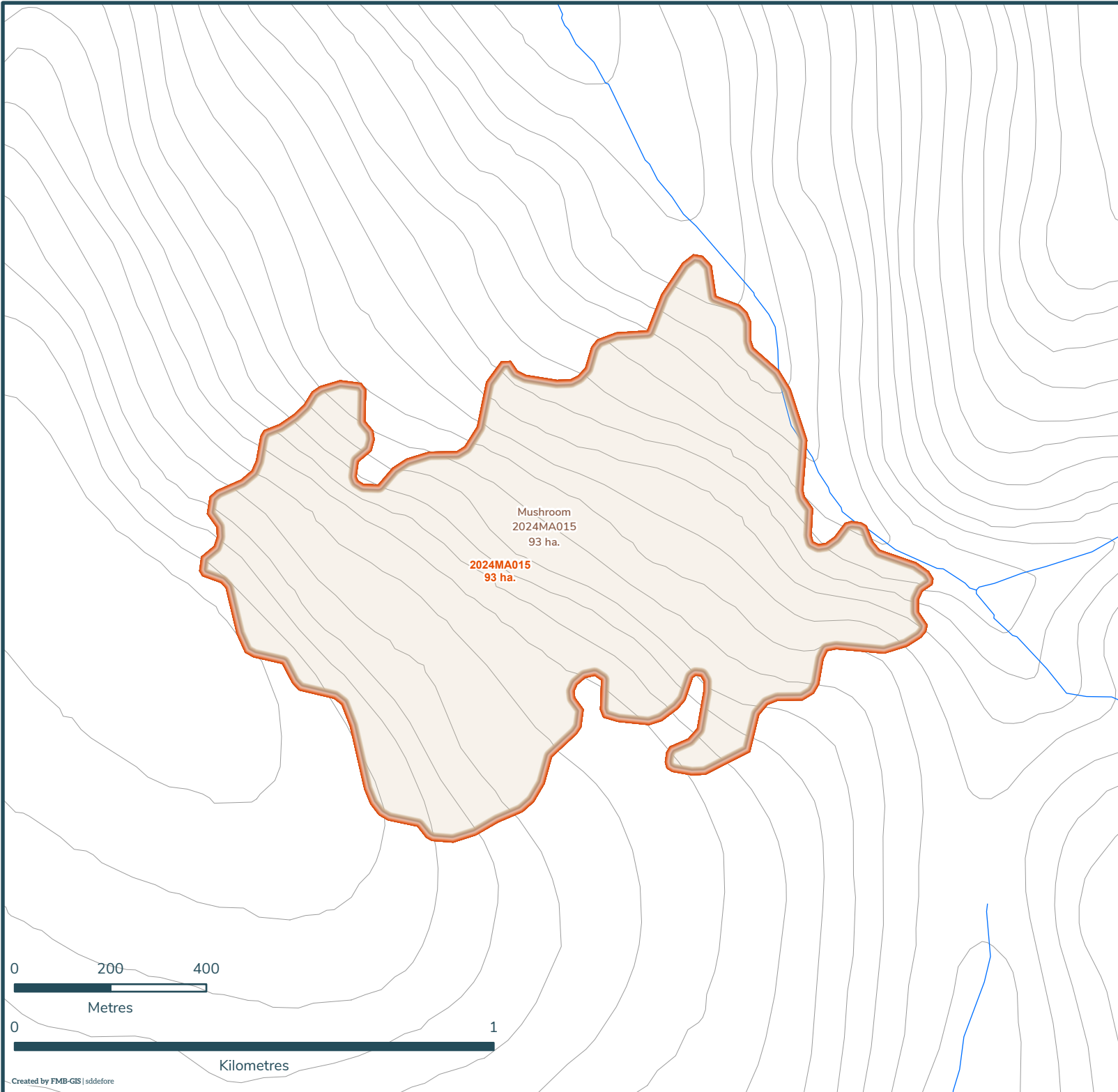
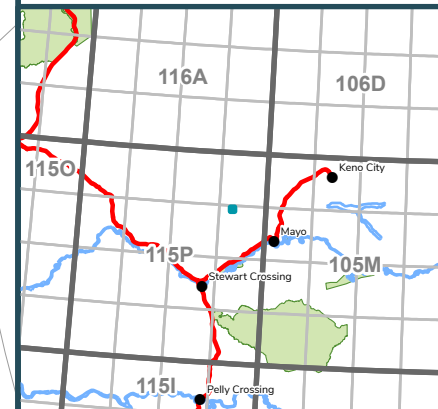
**2024MA015**

Scale: 1:11,000

Map Center: 136°21'29"W 63°43'54"N  
NAD 1983 Yukon Albers

- Fire Perimeter
- Designated Morel Mushroom Areas
- Surveyed Land Parcels
- Easements
- Land Dispositions
- Parks and Campgrounds
- Parks and Protected Areas
- First Nation Settlement Lands - Surveyed
- Interim Protected Settlement Lands
- Rivers & Streams
- Wetlands
- Lakes

1:250,000 NTS Map Series Numbers



# 2024 Wildland Fires

February 12, 2025

FIRE DISTRICT: MAYO

FIRE NAME: WATSON CREEK

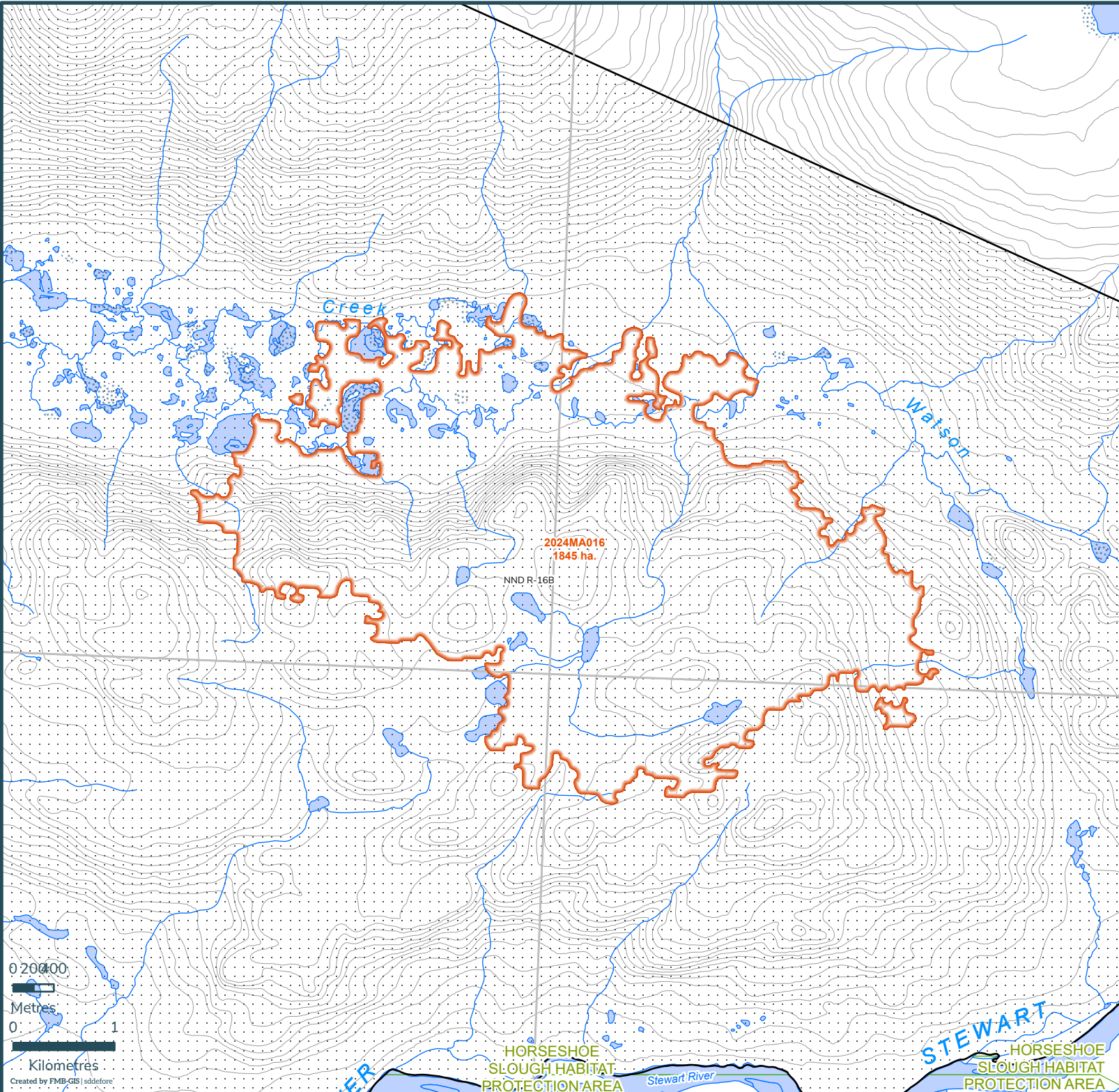
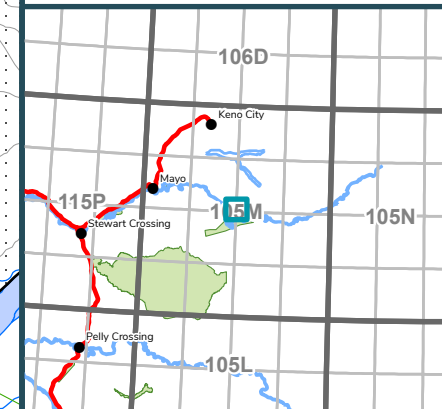
**2024MA016**

Scale: 1:52,000

Map Center: 134°59'53"W 63°30'40"N  
NAD 1983 Yukon Albers

- Fire Perimeter
- Designated Morel Mushroom Areas
- Surveyed Land Parcels
- Easements
- Land Dispositions
- Parks and Campgrounds
- Parks and Protected Areas
- First Nation Settlement Lands - Surveyed
- Interim Protected Settlement Lands
- Rivers & Streams
- Wetlands
- Lakes

1:250,000 NTS Map Series Numbers



0 200 400

Metres

0 1

Kilometres

Created by FMB-GIS | sddfore

## 2024 Wildland Fires

February 12, 2025



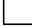









FIRE DISTRICT: MAYO

FIRE NAME: MOOSE RIVER

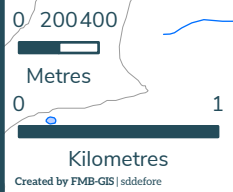
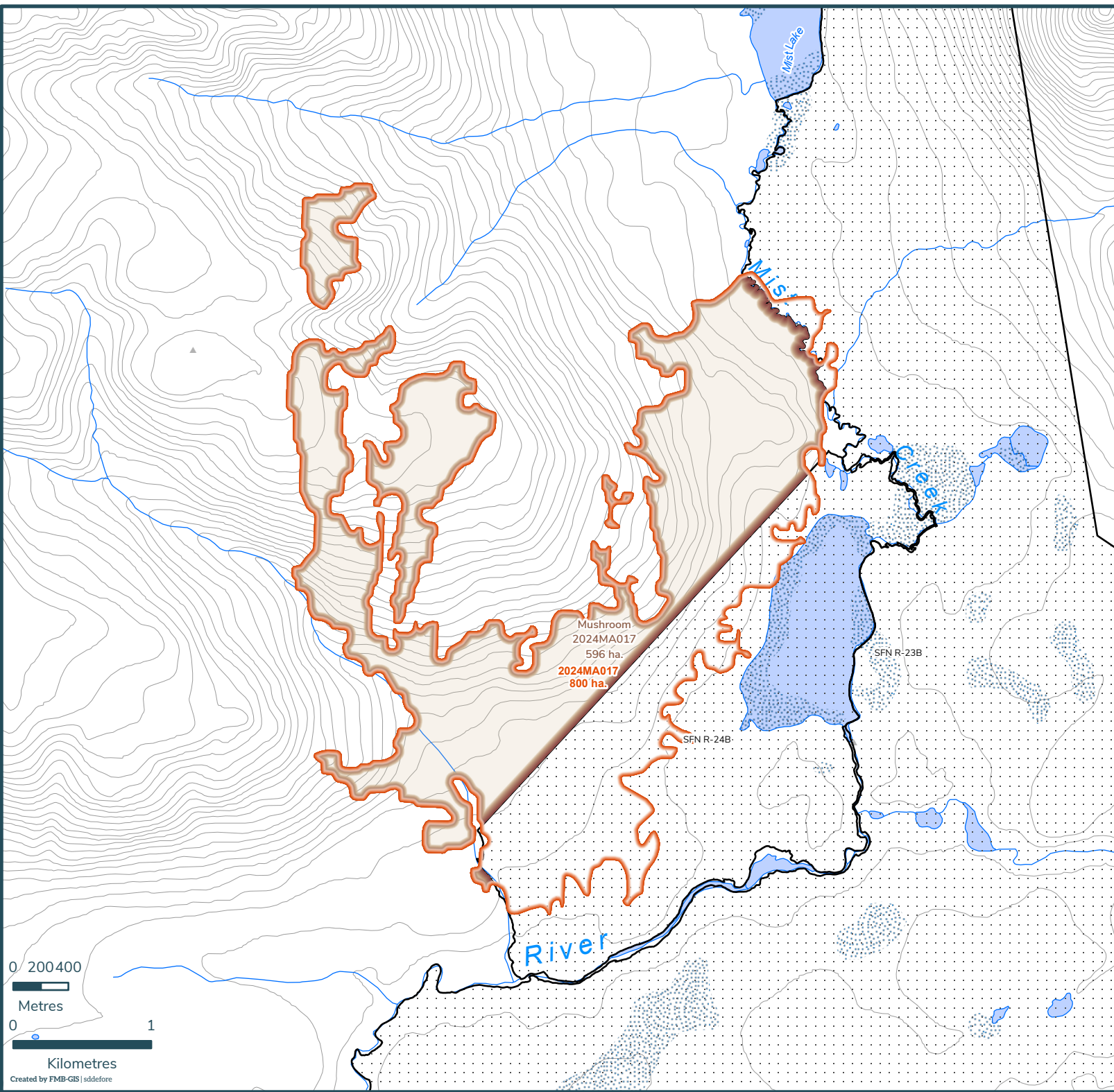
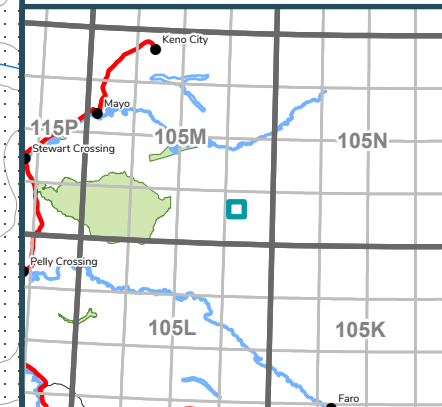
**2024MA017**

Scale: 1:38,000

Map Center: 134°22'49"W 63°9'52"N  
NAD 1983 Yukon Albers

-  Fire Perimeter
-  Designated Morel Mushroom Areas
-  Surveyed Land Parcels
-  Easements
-  Land Dispositions
-  Parks and Campgrounds
-  Parks and Protected Areas
-  First Nation Settlement Lands - Surveyed
-  Interim Protected Settlement Lands
-  Rivers & Streams
-  Wetlands
-  Lakes

1:250,000 NTS Map Series Numbers



# 2024 Wildland Fires

February 12, 2025

FIRE DISTRICT: MAYO

FIRE NAME: MOUNT PHELPS

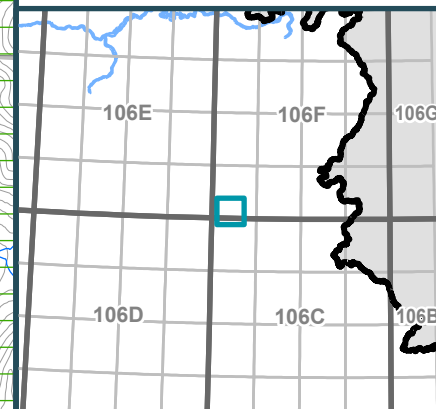
**2024MA018**

Scale: 1:67,000

Map Center: 133°47'31"W 65°1'58"N  
NAD 1983 Yukon Albers

- Fire Perimeter
- Designated Morel Mushroom Areas
- Surveyed Land Parcels
- Easements
- Land Dispositions
- Parks and Campgrounds
- Parks and Protected Areas
- First Nation Settlement Lands - Surveyed
- Interim Protected Settlement Lands
- Rivers & Streams
- Wetlands
- Lakes

1:250,000 NTS Map Series Numbers



RANGE

W E R N E C K E

B

TAGÉ-HÉNINLIN  
(NIJIN-HAN  
NIINLAI)

M O U N T A I N S

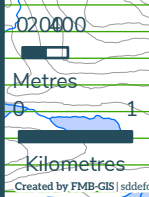
2024MA018  
1578 ha.

( S E L W Y N M O U N T A I N

Fairchild Lake

Fairchild Lake

B O N N E T



## 2024 Wildland Fires

February 12, 2025

FIRE DISTRICT: MAYO

FIRE NAME: NORTH MCQUESTEN

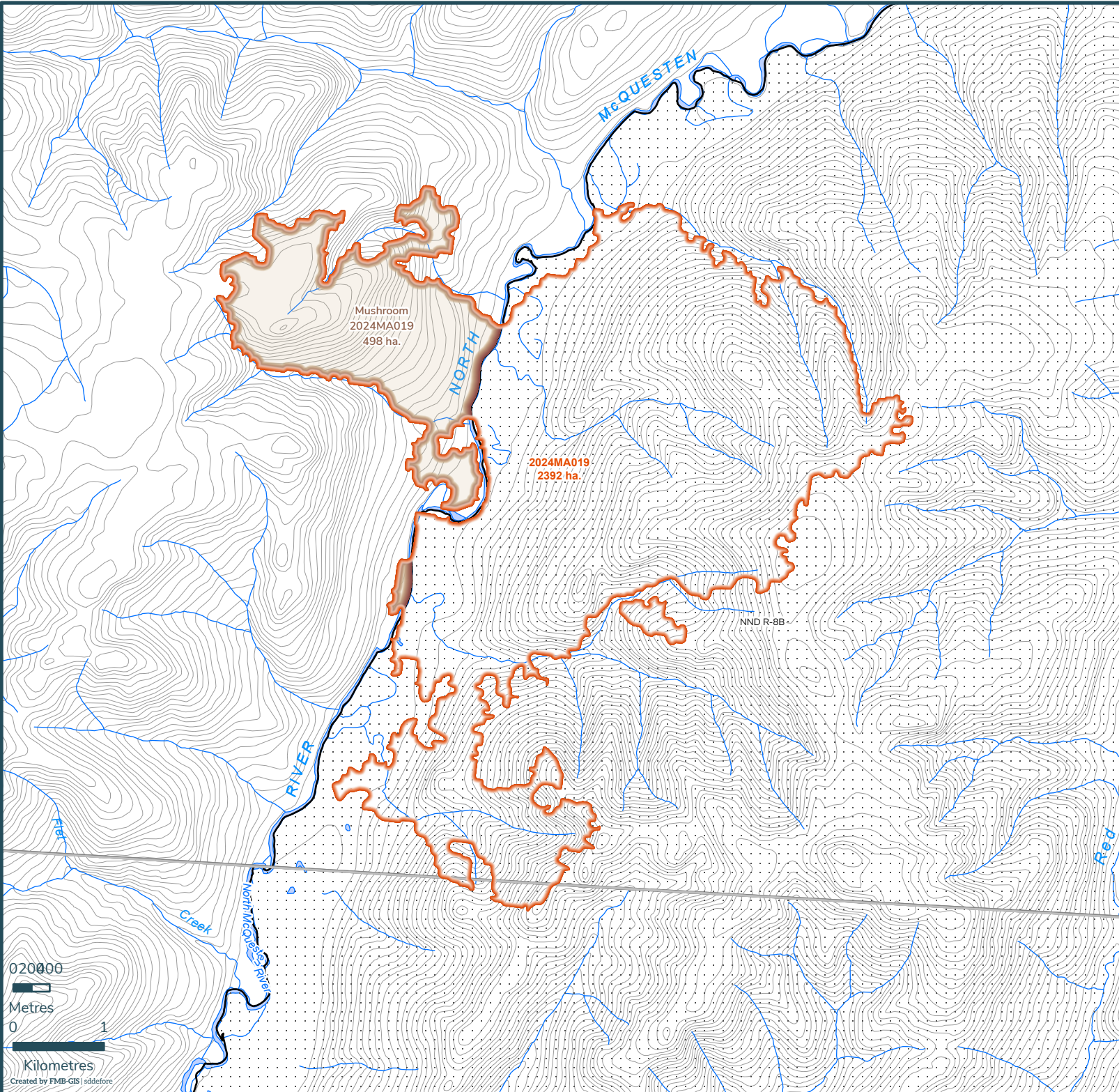
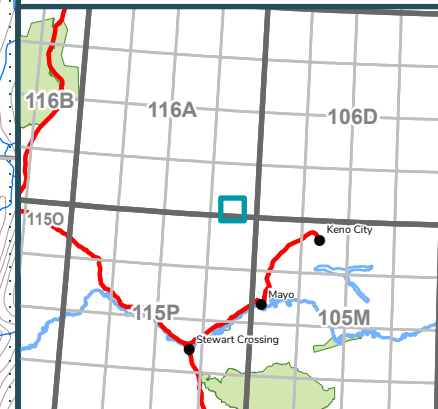
**2024MA019**

Scale: 1:58,000

Map Center: 136°15'49"W 64°1'59"N  
NAD 1983 Yukon Albers

-  Fire Perimeter
-  Designated Morel Mushroom Areas
-  Surveyed Land Parcels
-  Easements
-  Land Dispositions
-  Parks and Campgrounds
-  Parks and Protected Areas
-  First Nation Settlement Lands - Surveyed
-  Interim Protected Settlement Lands
-  Rivers & Streams
-  Wetlands
-  Lakes

1:250,000 NTS Map Series Numbers



0 20000

Metres

0

1

Kilometres

Created by FMB-GIS | sdd@fore

# 2024 Wildland Fires

February 12, 2025

FIRE DISTRICT: MAYO

FIRE NAME: UPPER LANSING RIVER

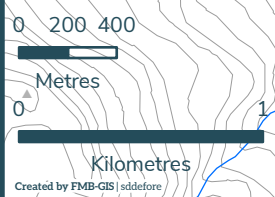
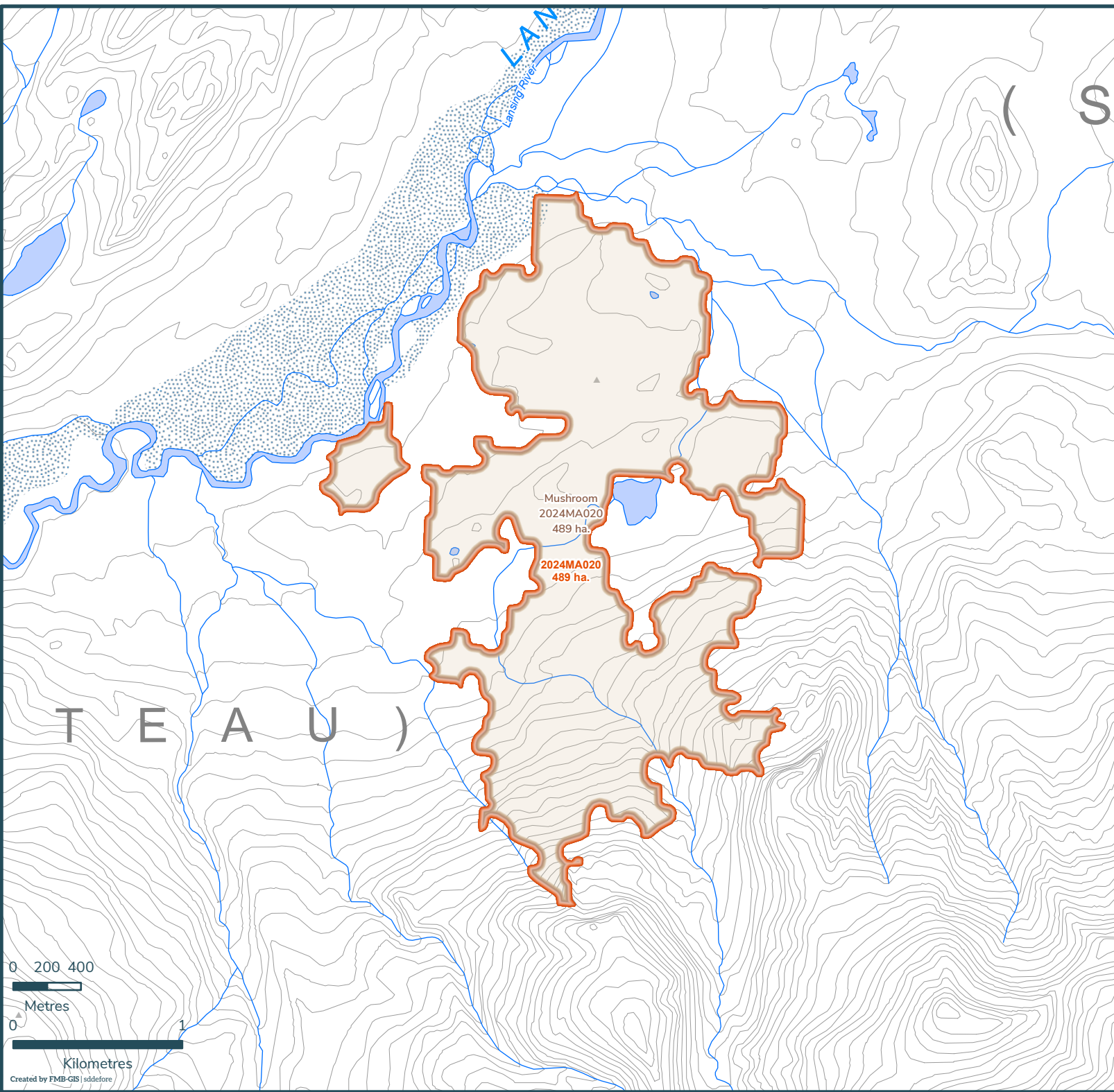
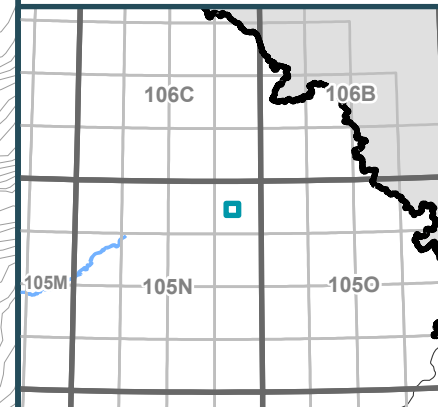
**2024MA020**

Scale: 1:31,000

Map Center: 132°18'29"W 63°52'N  
NAD 1983 Yukon Albers

- Fire Perimeter
- Designated Morel Mushroom Areas
- Surveyed Land Parcels
- Easements
- Land Dispositions
- Parks and Campgrounds
- Parks and Protected Areas
- First Nation Settlement Lands - Surveyed
- Interim Protected Settlement Lands
- Rivers & Streams
- Wetlands
- Lakes

1:250,000 NTS Map Series Numbers



## 2024 Wildland Fires

February 12, 2025







FIRE DISTRICT: MAYO

FIRE NAME: ROARING FORK

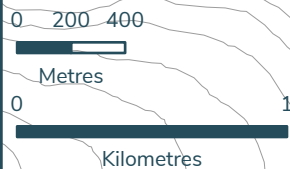
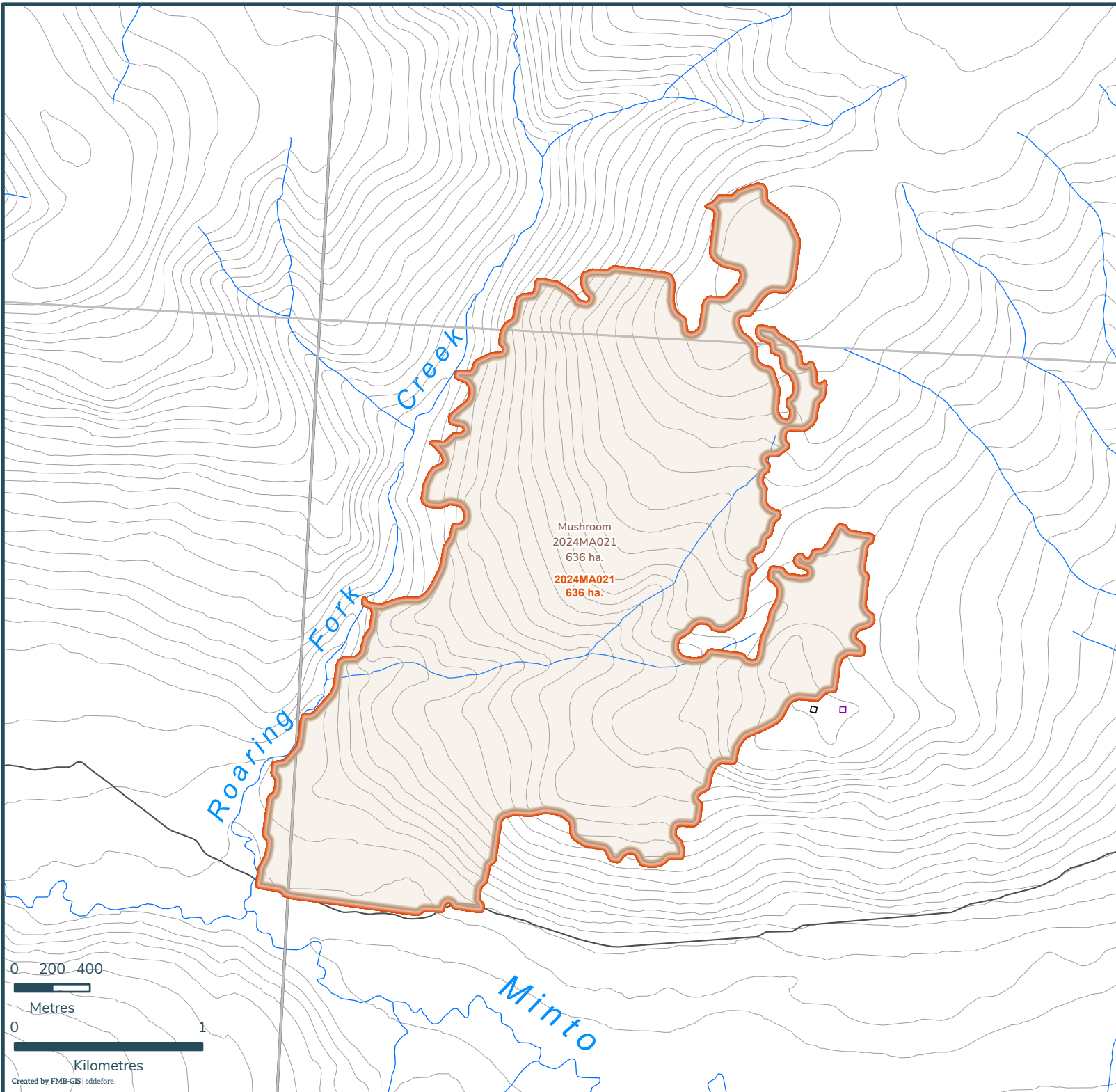
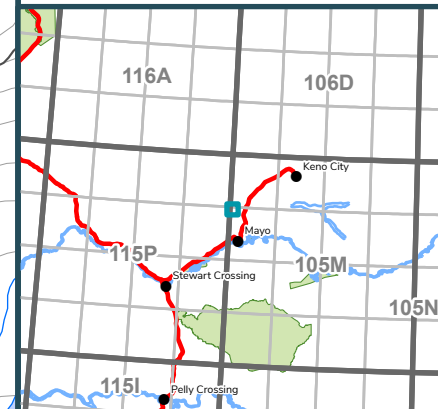
**2024MA021**

Scale: 1:28,000

Map Center: 135°58'20"W 63°44'23"N  
NAD 1983 Yukon Albers

-  Fire Perimeter
-  Designated Morel Mushroom Areas
-  Surveyed Land Parcels
-  Easements
-  Land Dispositions
-  Parks and Campgrounds
-  Parks and Protected Areas
-  First Nation Settlement Lands - Surveyed
-  Interim Protected Settlement Lands
-  Rivers & Streams
-  Wetlands
-  Lakes

1:250,000 NTS Map Series Numbers



# 2024 Wildland Fires

February 12, 2025

FIRE DISTRICT: MAYO

FIRE NAME: STEWART RIVER

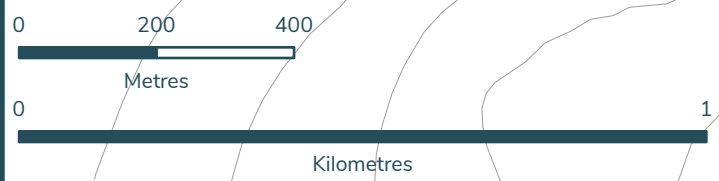
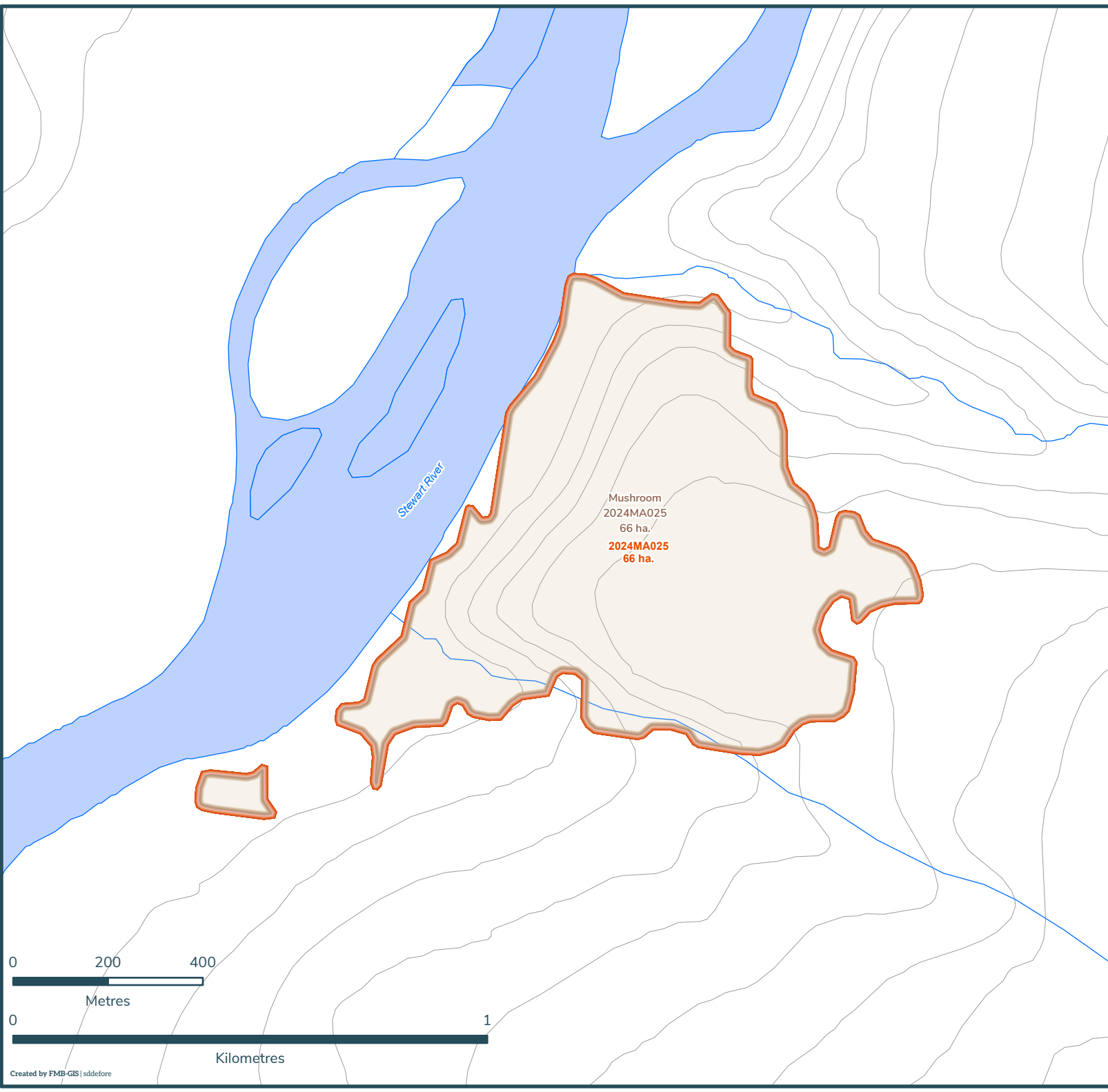
**2024MA025**

Scale: 1:11,000

Map Center: 137°46'33"W 63°31'57"N  
NAD 1983 Yukon Albers

- Fire Perimeter
- Designated Morel Mushroom Areas
- Surveyed Land Parcels
- Easements
- Land Dispositions
- Parks and Campgrounds
- Parks and Protected Areas
- First Nation Settlement Lands - Surveyed
- Interim Protected Settlement Lands
- Rivers & Streams
- Wetlands
- Lakes

1:250,000 NTS Map Series Numbers



# 2024 Wildland Fires

February 12, 2025

FIRE DISTRICT: MAYO

FIRE NAME: BARREN PLATEAU

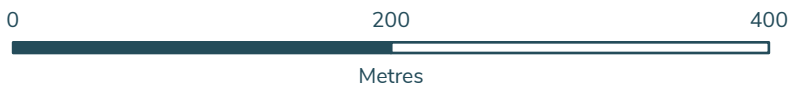
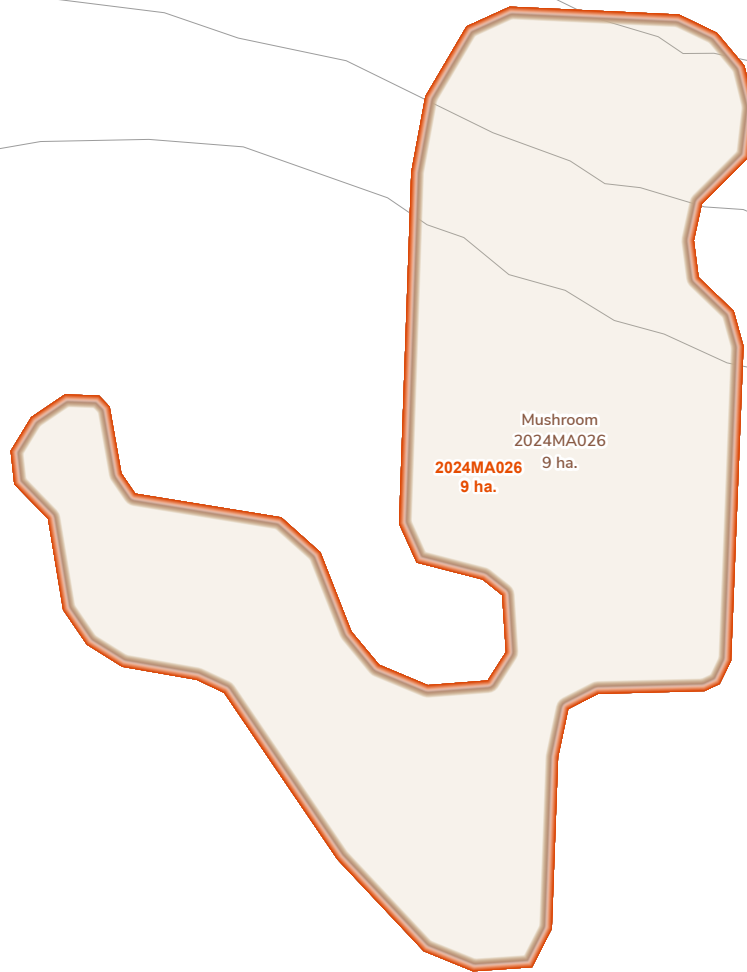
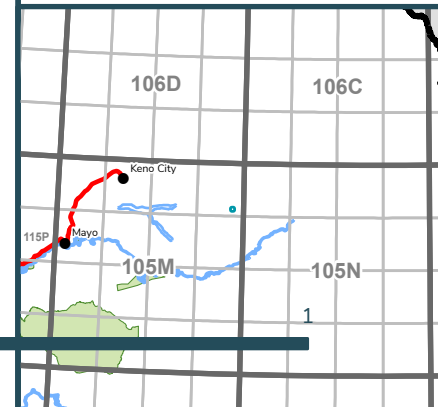
**2024MA026**

Scale: 1:4,000

Map Center: 134°7'5"W 63°46'55"N  
NAD 1983 Yukon Albers

- Fire Perimeter
- Designated Morel Mushroom Areas
- Surveyed Land Parcels
- Easements
- Land Dispositions
- Parks and Campgrounds
- Parks and Protected Areas
- First Nation Settlement Lands - Surveyed
- Interim Protected Settlement Lands
- Rivers & Streams
- Wetlands
- Lakes

1:250,000 NTS Map Series Numbers



# 2024 Wildland Fires

February 12, 2025

FIRE DISTRICT: MAYO

FIRE NAME: BONNET PLUME

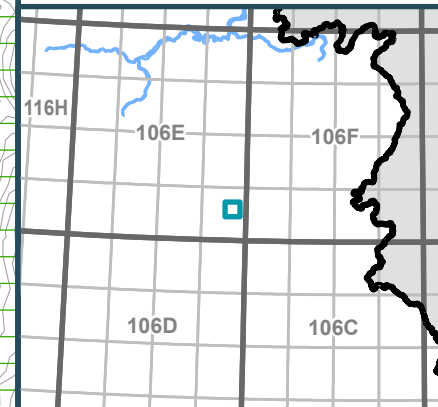
**2024MA029**

Scale: 1:37,000

Map Center: 134°9'11"W 65°8'49"N  
NAD 1983 Yukon Albers

- Fire Perimeter
- Designated Morel Mushroom Areas
- Surveyed Land Parcels
- Easements
- Land Dispositions
- Parks and Campgrounds
- Parks and Protected Areas
- First Nation Settlement Lands - Surveyed
- Interim Protected Settlement Lands
- Rivers & Streams
- Wetlands
- Lakes

1:250,000 NTS Map Series Numbers



TAGÉ HÉNINLIN  
(NIJIN HAN  
NIINLAI)

2024MA029  
808 ha.

0 200 400

Metres

0 1

Kilometres

Created by EMB-GIS | sdd@fore

## 2024 Wildland Fires

February 12, 2025



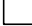









FIRE DISTRICT: MAYO

FIRE NAME: MACMILLAN RIVER

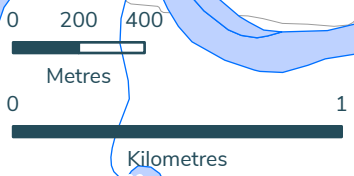
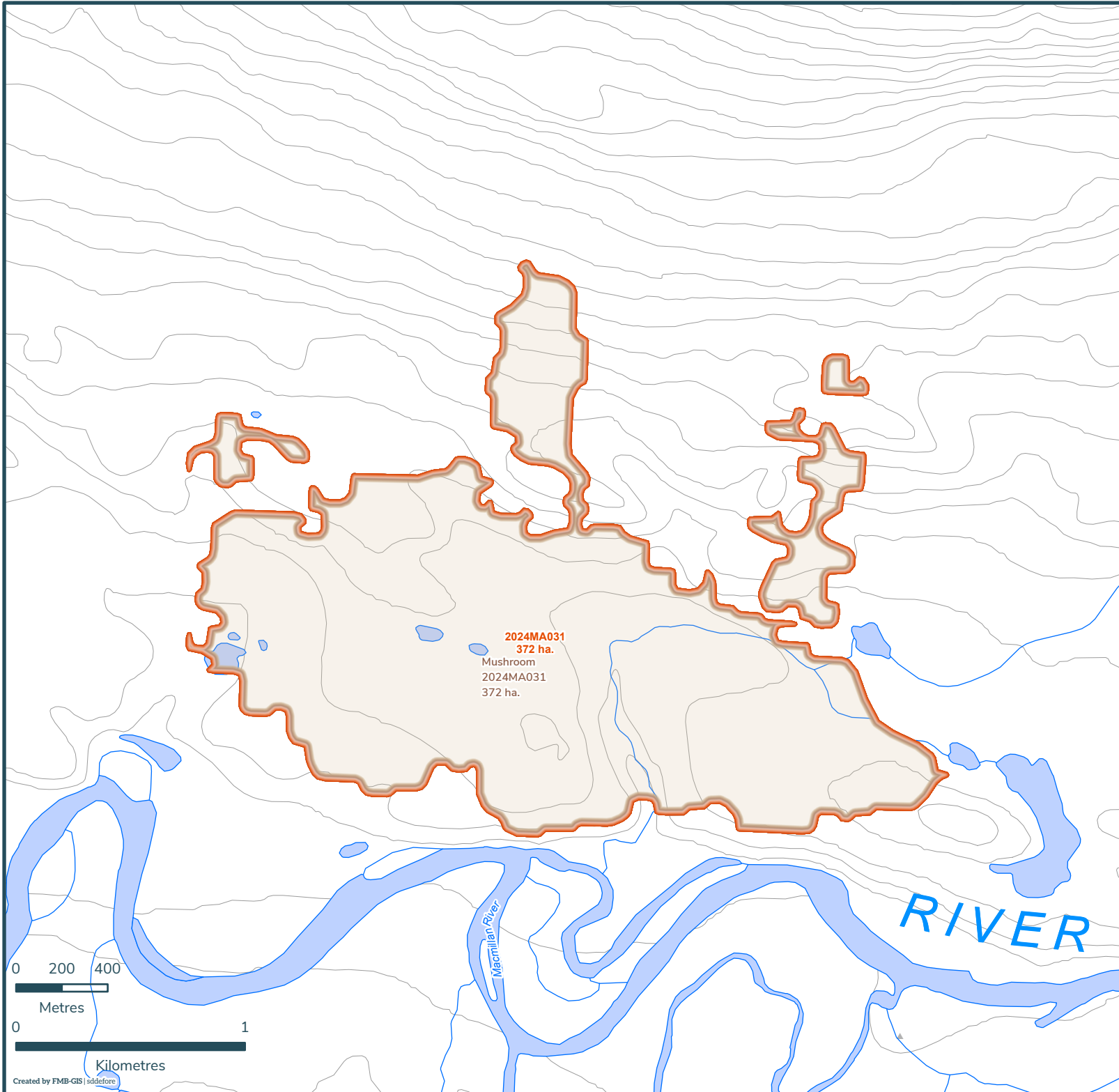
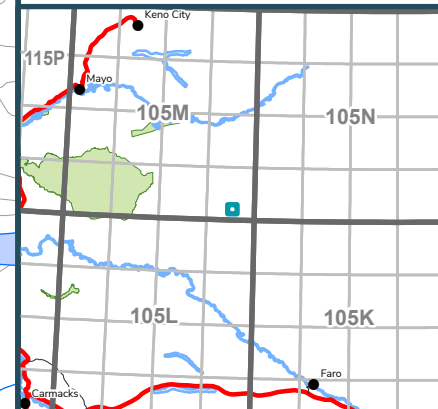
**2024MA031**

Scale: 1:23,000

Map Center: 134°13'47"W 63°3'3"N  
NAD 1983 Yukon Albers

-  Fire Perimeter
-  Designated Morel Mushroom Areas
-  Surveyed Land Parcels
-  Easements
-  Land Dispositions
-  Parks and Campgrounds
-  Parks and Protected Areas
-  First Nation Settlement Lands - Surveyed
-  Interim Protected Settlement Lands
-  Rivers & Streams
-  Wetlands
-  Lakes

1:250,000 NTS Map Series Numbers



## 2024 Wildland Fires

February 12, 2025



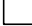








FIRE DISTRICT: MAYO

FIRE NAME: MCQUESTEN LAKE

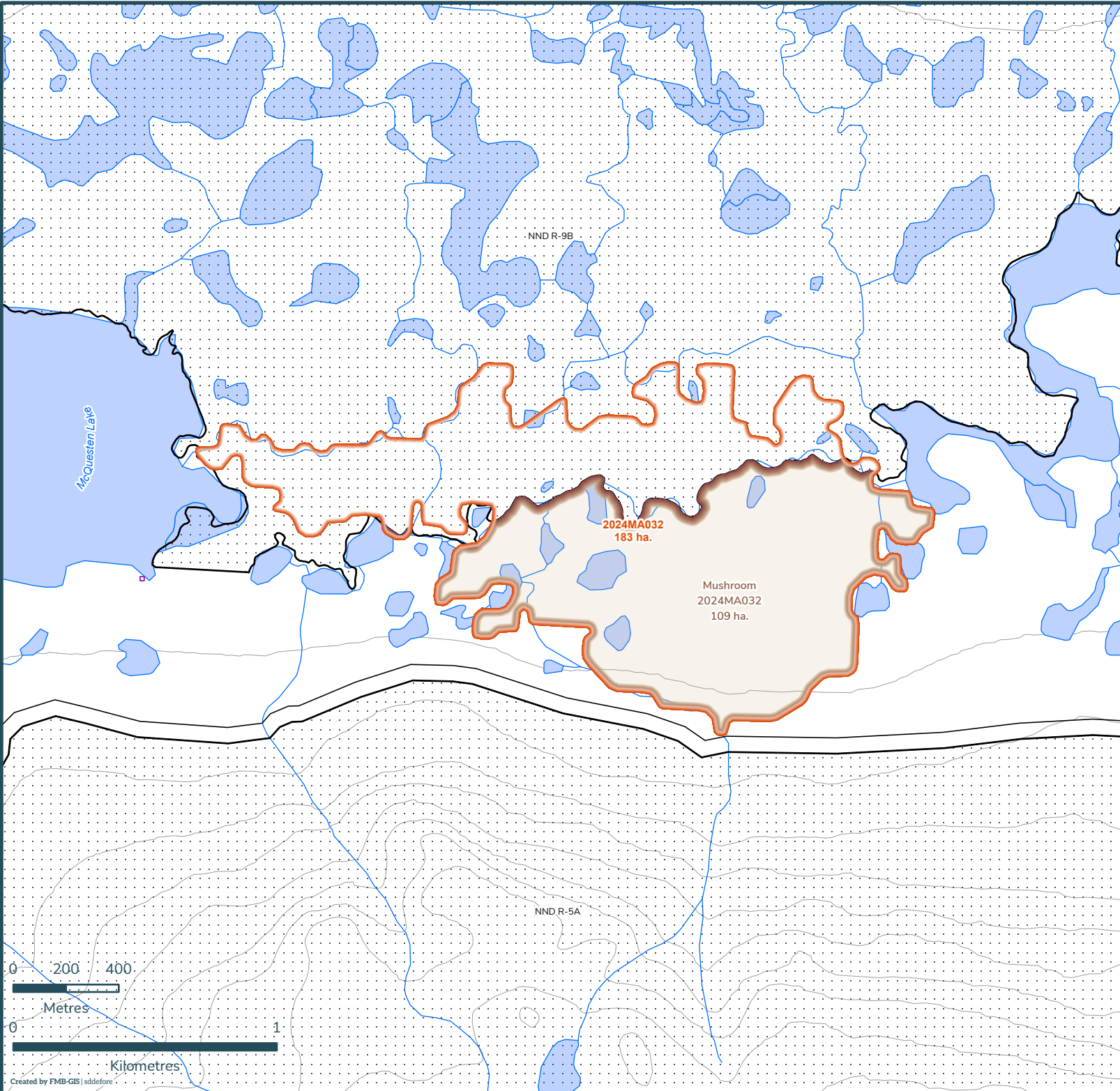
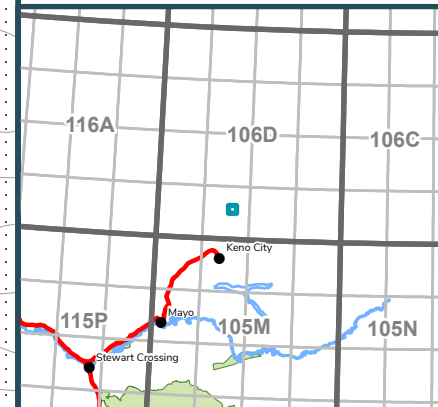
**2024MA032**

Scale: 1:20,000

Map Center: 135°11'6"W 64°8'30"N  
NAD 1983 Yukon Albers

-  Fire Perimeter
-  Designated Morel Mushroom Areas
-  Surveyed Land Parcels
-  Easements
-  Land Dispositions
-  Parks and Campgrounds
-  Parks and Protected Areas
-  First Nation Settlement Lands - Surveyed
-  Interim Protected Settlement Lands
-  Rivers & Streams
-  Wetlands
-  Lakes

1:250,000 NTS Map Series Numbers



# 2024 Wildland Fires

February 12, 2025

FIRE DISTRICT: MAYO

FIRE NAME: GRAYLING LAKES

**2024MA035**

Scale: 1:29,000

Map Center: 136°52'19"W 63°3'12"N  
NAD 1983 Yukon Albers

- Fire Perimeter
- Designated Morel Mushroom Areas
- Surveyed Land Parcels
- Easements
- Land Dispositions
- Parks and Campgrounds
- Parks and Protected Areas
- First Nation Settlement Lands - Surveyed
- Interim Protected Settlement Lands
- Rivers & Streams
- Wetlands
- Lakes

1:250,000 NTS Map Series Numbers

