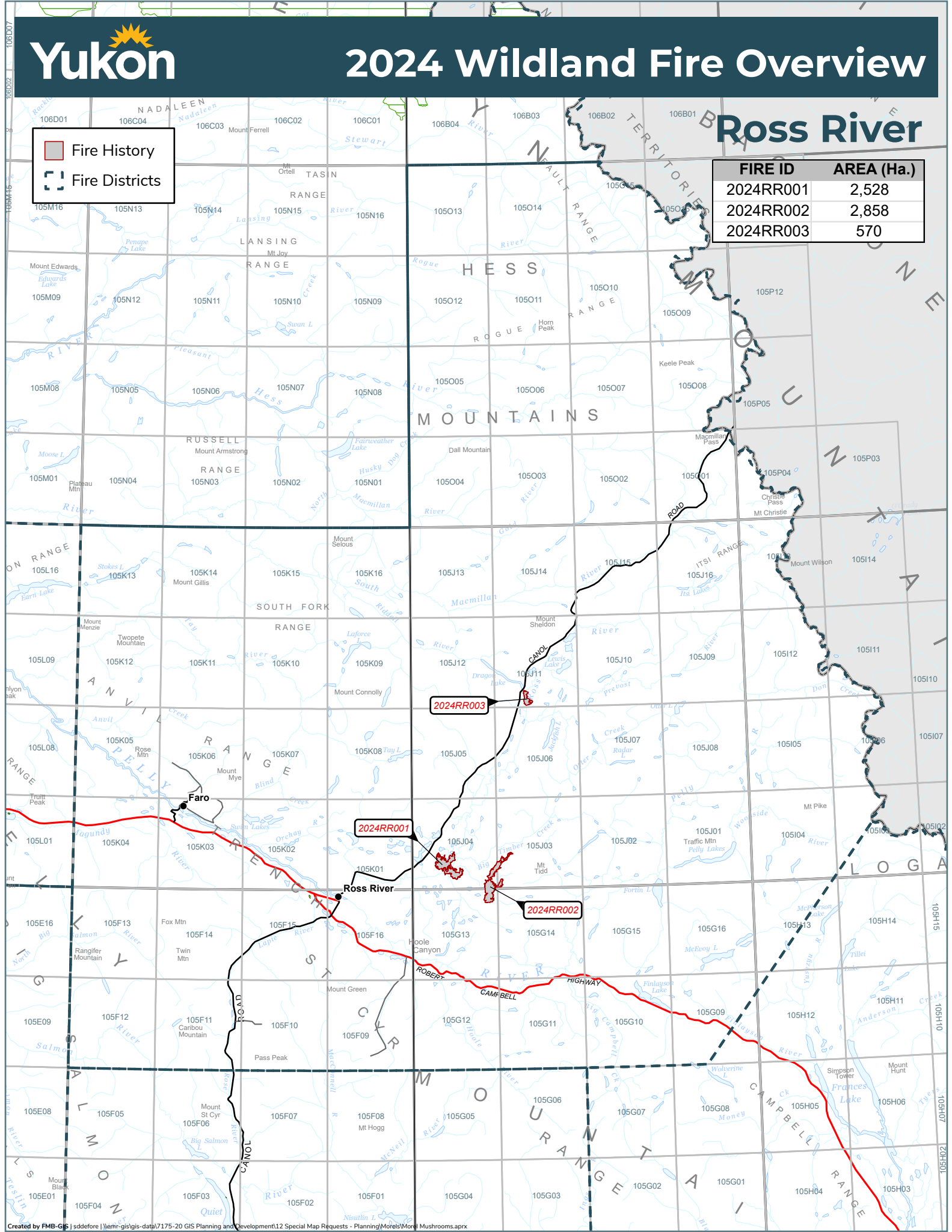


Ross River

- Fire History
- Fire Districts

FIRE ID	AREA (Ha.)
2024RR001	2,528
2024RR002	2,858
2024RR003	570



2024 Wildland Fires

February 12, 2025

FIRE DISTRICT: ROSS RIVER

FIRE NAME: BIG TIMER CREEK

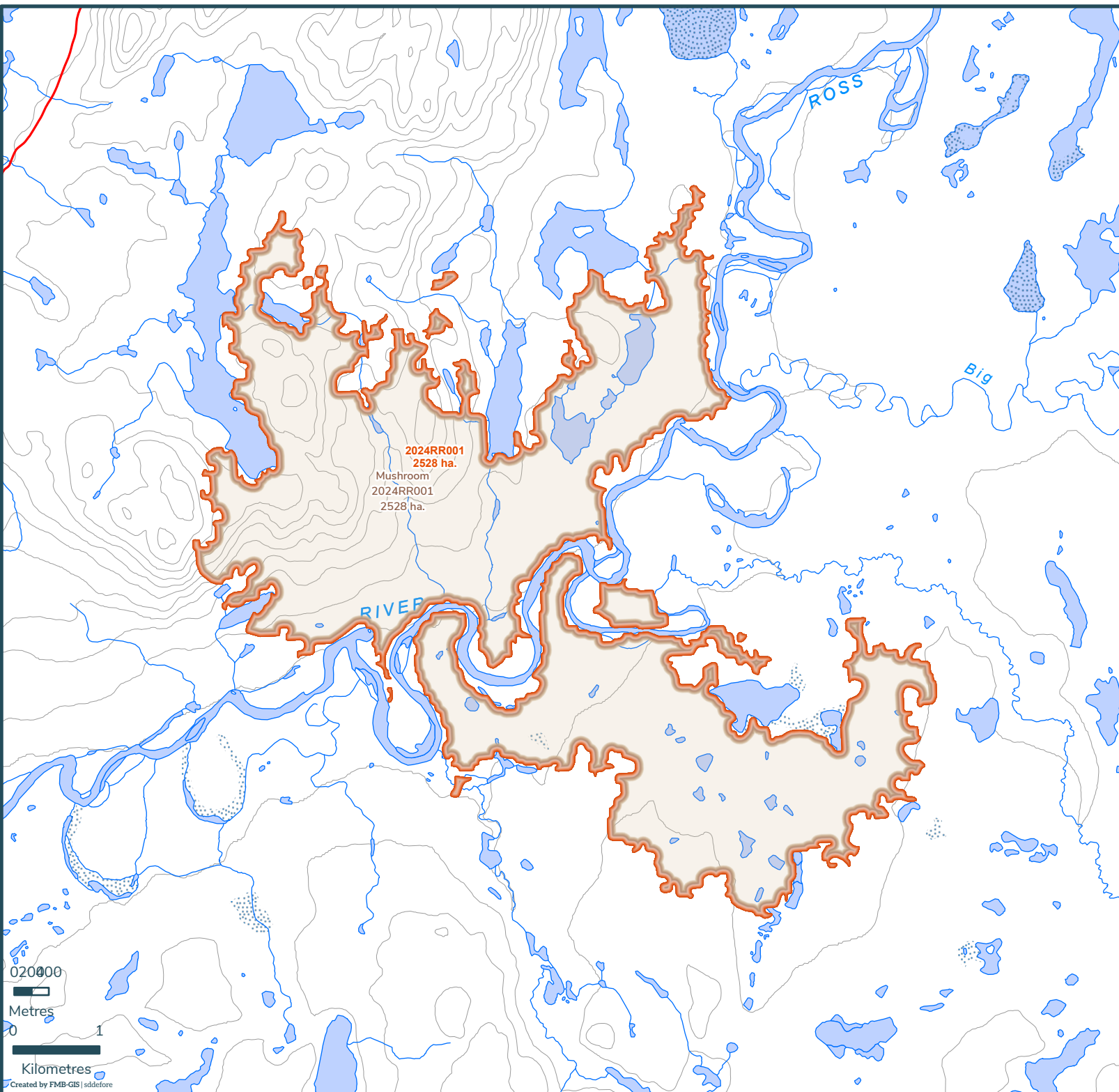
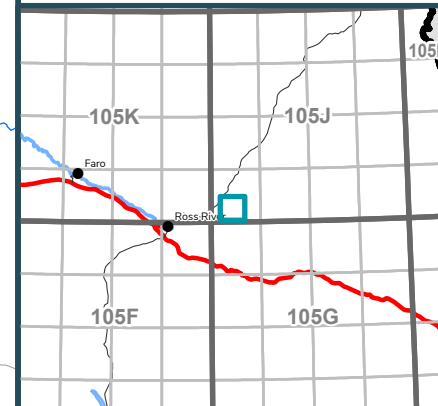
2024RR001

Scale: 1:61,000

Map Center: 131°47'1"W 62°3'55"N
NAD 1983 Yukon Albers

- Fire Perimeter
- Designated Morel Mushroom Areas
- Surveyed Land Parcels
- Easements
- Land Dispositions
- Parks and Campgrounds
- Parks and Protected Areas
- First Nation Settlement Lands - Surveyed
- Interim Protected Settlement Lands
- Rivers & Streams
- Wetlands
- Lakes

1:250,000 NTS Map Series Numbers



0 20000
Metres
0 1
Kilometres
Created by FMB-GIS | sddfore

2024 Wildland Fires

February 12, 2025

FIRE DISTRICT: ROSS RIVER

FIRE NAME: 11KM NE OF WEASEL LK

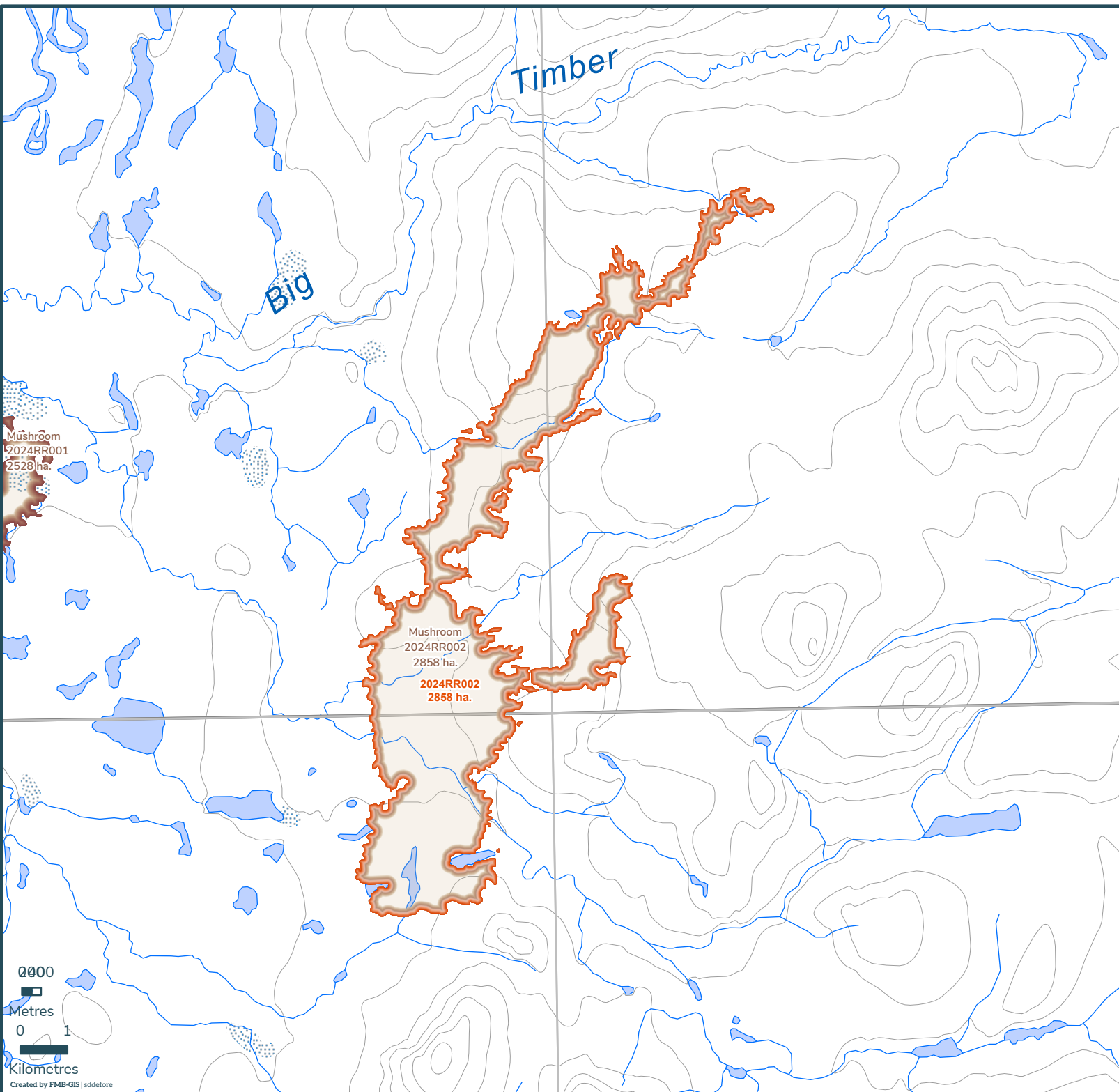
2024RR002

Scale: 1:112,000

Map Center: 131°29'38"W 62°1'50"N
NAD 1983 Yukon Albers

- Fire Perimeter
- Designated Morel Mushroom Areas
- Surveyed Land Parcels
- Easements
- Land Dispositions
- Parks and Campgrounds
- Parks and Protected Areas
- First Nation Settlement Lands - Surveyed
- Interim Protected Settlement Lands
- Rivers & Streams
- Wetlands
- Lakes

1:250,000 NTS Map Series Numbers



0 1
Metres
Kilometres
Created by FMB-GIS | sddefore

2024 Wildland Fires

February 12, 2025

FIRE DISTRICT: ROSS RIVER

FIRE NAME: PREVOST CANYON

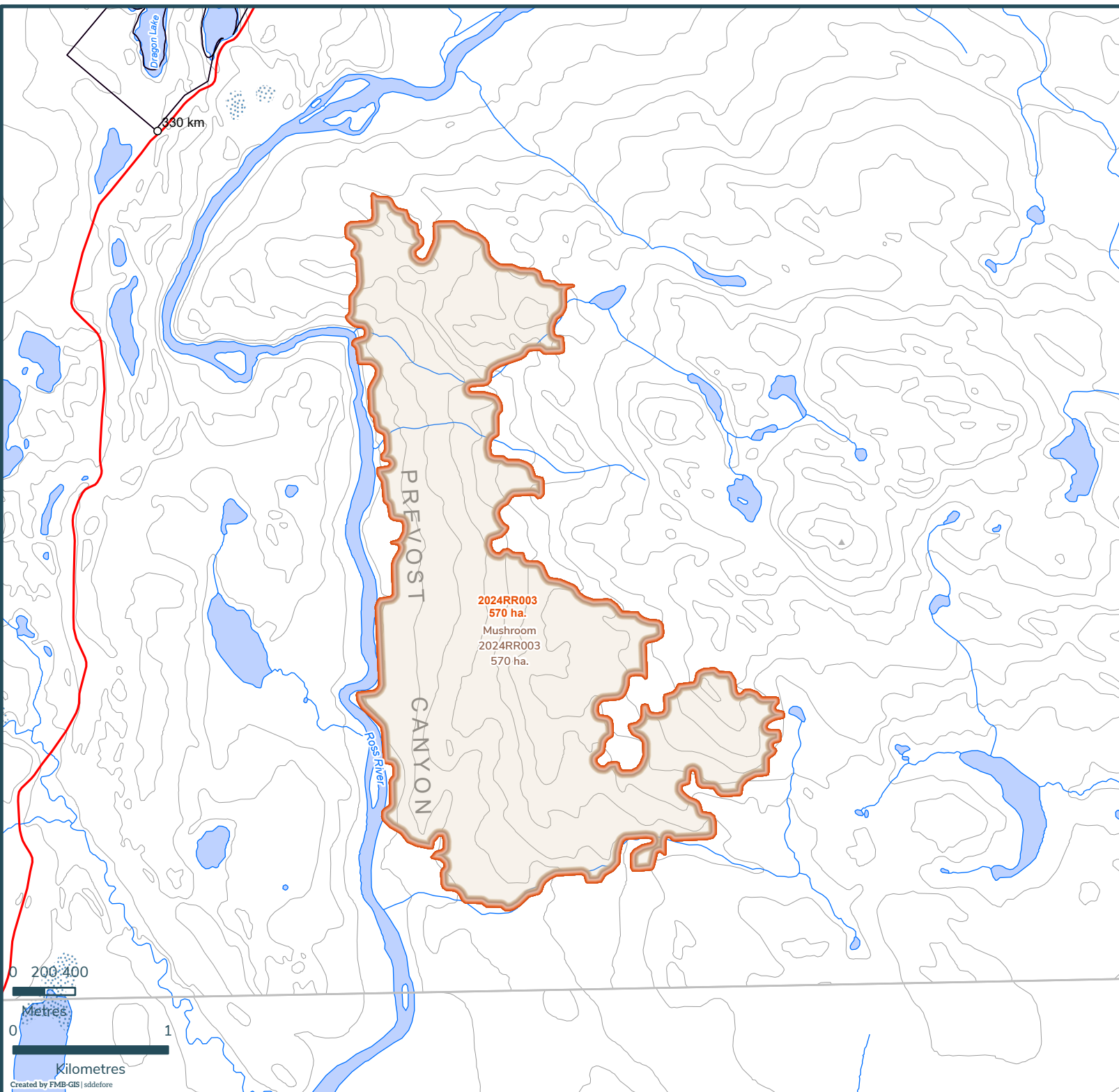
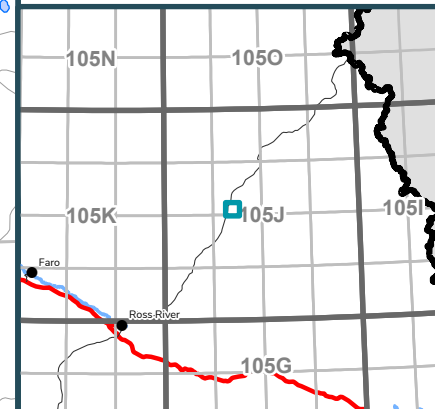
2024RR003

Scale: 1:34,000

Map Center: 131°18'1"W 62°31'31"N
NAD 1983 Yukon Albers

- Fire Perimeter
- Designated Morel Mushroom Areas
- Surveyed Land Parcels
- Easements
- Land Dispositions
- Parks and Campgrounds
- Parks and Protected Areas
- First Nation Settlement Lands - Surveyed
- Interim Protected Settlement Lands
- Rivers & Streams
- Wetlands
- Lakes

1:250,000 NTS Map Series Numbers



2024 Wildland Fires

February 12, 2025













FIRE DISTRICT: ROSS RIVER

FIRE NAME: SELWYN MOUNTAINS

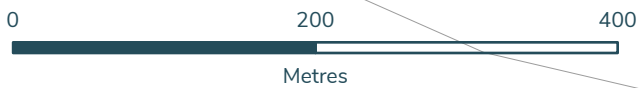
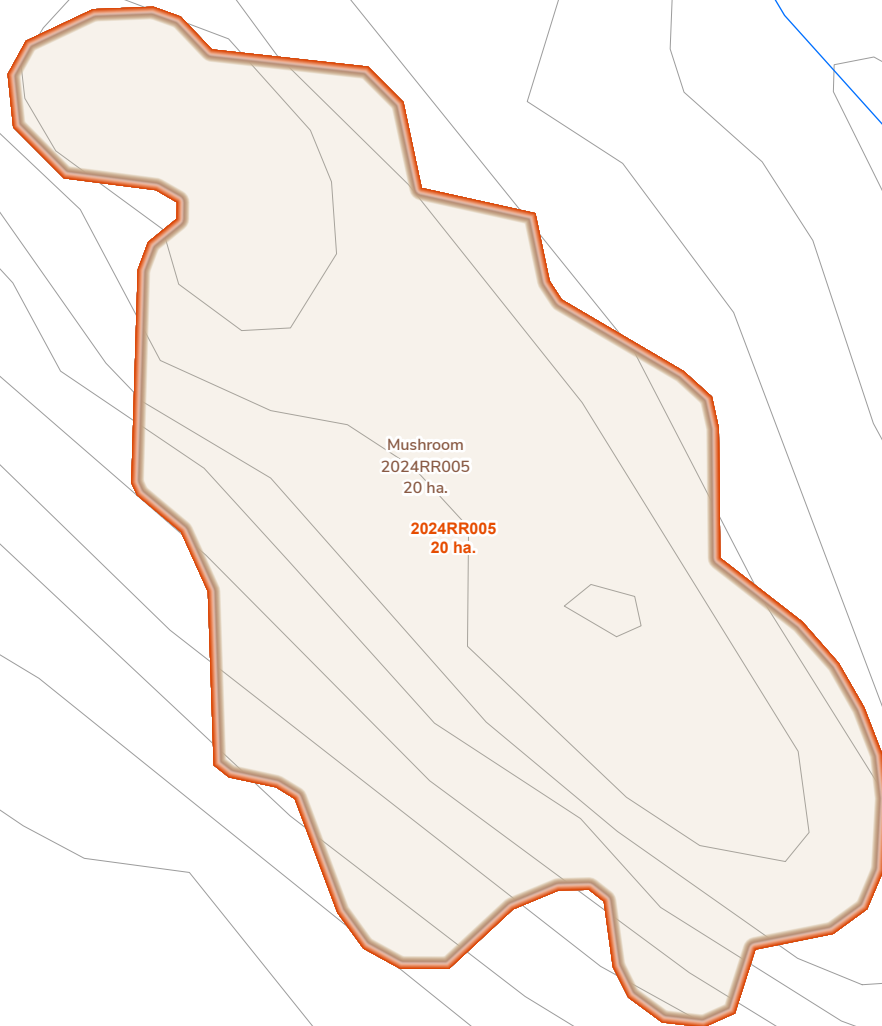
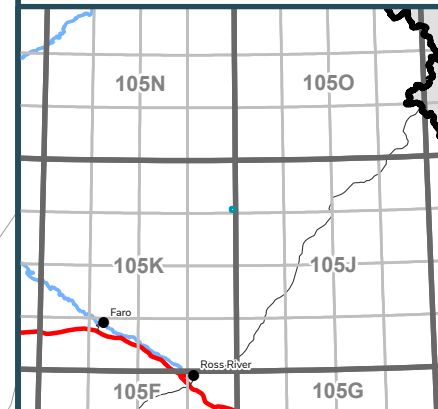
2024RR005

Scale: 1:5,000

Map Center: 132°1'56"W 62°46'4"N
NAD 1983 Yukon Albers

-  Fire Perimeter
-  Designated Morel Mushroom Areas
-  Surveyed Land Parcels
-  Easements
-  Land Dispositions
-  Parks and Campgrounds
-  Parks and Protected Areas
-  First Nation Settlement Lands - Surveyed
-  Interim Protected Settlement Lands
-  Rivers & Streams
-  Wetlands
-  Lakes

1:250,000 NTS Map Series Numbers



2024 Wildland Fires

February 12, 2025

FIRE DISTRICT: ROSS RIVER

FIRE NAME: ORCHAY RIVER

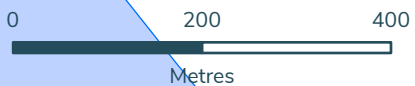
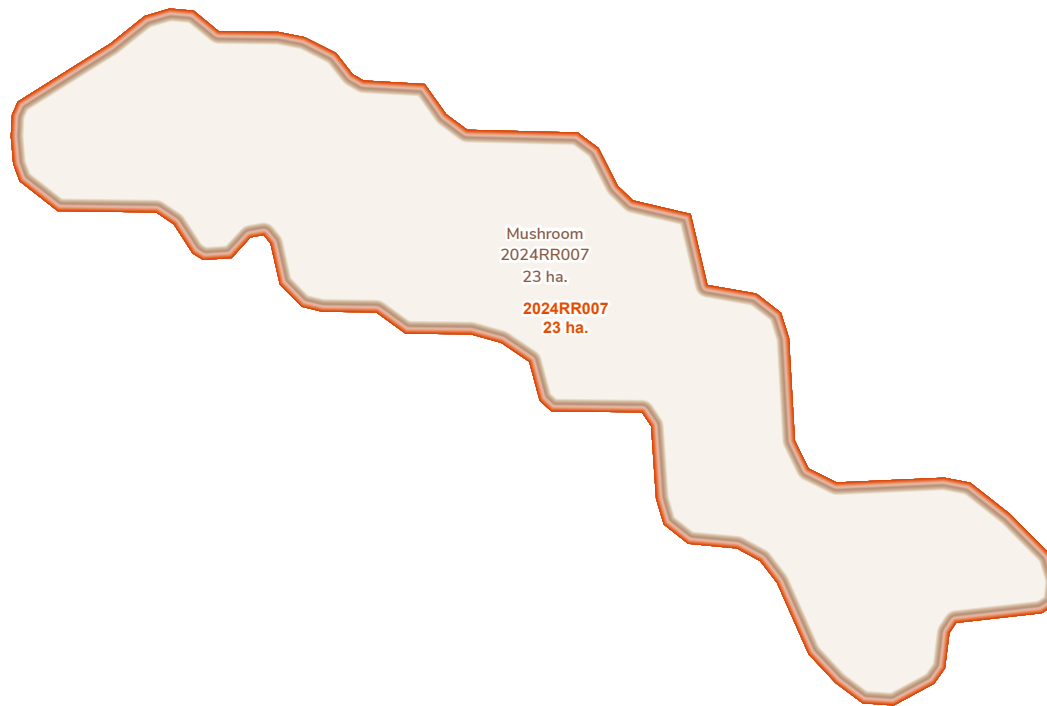
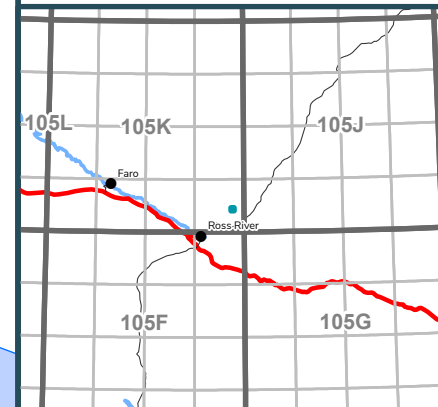
2024RR007

Scale: 1:8,000

Map Center: 132°7'2"W 62°6'27"N
NAD 1983 Yukon Albers

- Fire Perimeter
- Designated Morel Mushroom Areas
- Surveyed Land Parcels
- Easements
- Land Dispositions
- Parks and Campgrounds
- Parks and Protected Areas
- First Nation Settlement Lands - Surveyed
- Interim Protected Settlement Lands
- Rivers & Streams
- Wetlands
- Lakes

1:250,000 NTS Map Series Numbers



2024 Wildland Fires

February 12, 2025

FIRE DISTRICT: ROSS RIVER

FIRE NAME: UPPER MACMILLIAN RIVER.

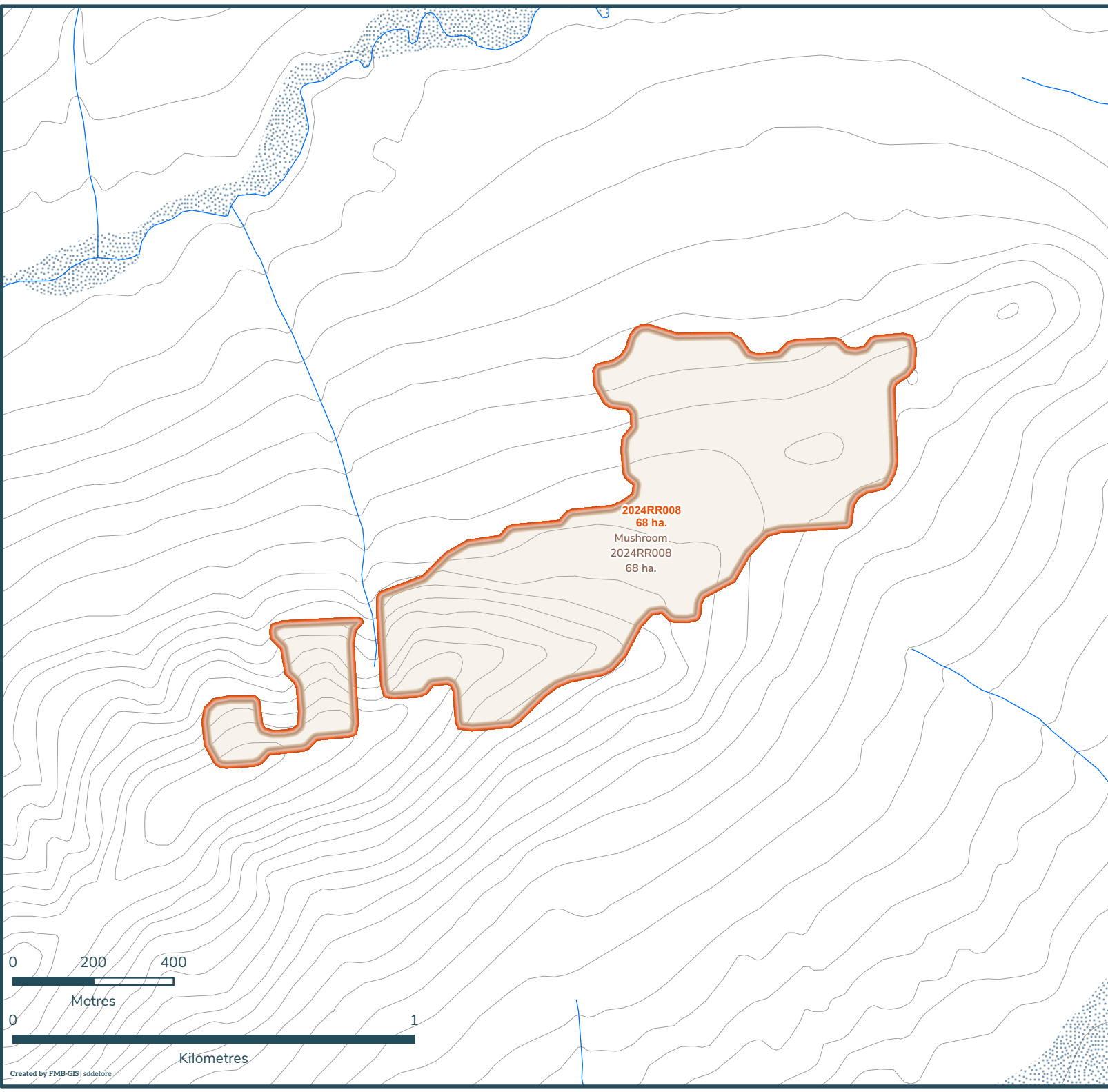
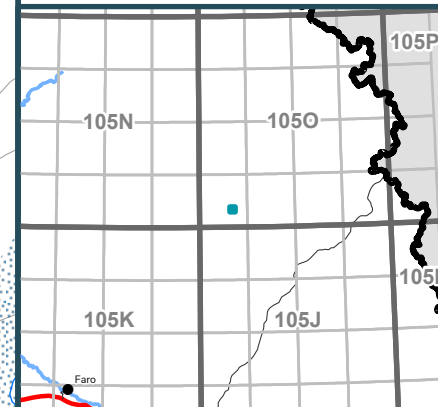
2024RR008

Scale: 1:13,000

Map Center: 131°39'17"W 63°5'5"N
NAD 1983 Yukon Albers

- Fire Perimeter
- Designated Morel Mushroom Areas
- Surveyed Land Parcels
- Easements
- Land Dispositions
- Parks and Campgrounds
- Parks and Protected Areas
- First Nation Settlement Lands - Surveyed
- Interim Protected Settlement Lands
- Rivers & Streams
- Wetlands
- Lakes

1:250,000 NTS Map Series Numbers



2024RR008
68 ha.
Mushroom
2024RR008
68 ha.

0 200 400
Metres

0 1
Kilometres

2024 Wildland Fires

February 12, 2025

FIRE DISTRICT: ROSS RIVER

FIRE NAME: UPPER PELLY R.

2024RR009

Scale: 1:9,000

Map Center: 129°52'1"W 62°23'11"N
NAD 1983 Yukon Albers

- Fire Perimeter
- Designated Morel Mushroom Areas
- Surveyed Land Parcels
- Easements
- Land Dispositions
- Parks and Campgrounds
- Parks and Protected Areas
- First Nation Settlement Lands - Surveyed
- Interim Protected Settlement Lands
- Rivers & Streams
- Wetlands
- Lakes

1:250,000 NTS Map Series Numbers

