

**Inventory of Equipment, Machinery,
Major Fixtures and Hazardous Materials
at the ~~Donjek~~ Pumping Station,
Yukon Territories.**

**Prepared for
Indian and Northern Affairs Canada**

August, 1998

**Prepared by
Arctic Environmental Services Ltd., and KO KEN General Contractors**

Table of Contents

	Page
1.0 Introduction	1
2.0 Project Scope	1
3.0 Methodology	2
3.1 Review of Documents	2
3.2 Health and Safety Plan	2
3.3 Building Assessment	3
3.4 Equipment Inventory	3
3.5 Hazardous Materials Assessment	3
4.0 Inventory Results	3
5.0 Conclusions	12

List of Figures

Figure 1 Site Layout	4
Figure 2 Locations of Major Equipment	5

List of Appendices

Appendix A System Flow Diagram	
Appendix B Laboratory Results	
Appendix C Photographs of Station	

1.0 Introduction

Indian and Northern Affairs Canada (DIAND) contracted Arctic Environmental Services Ltd., and KO KEN General Contractors to complete an inventory of equipment, machinery, major fixtures and hazardous materials at the Donjek Pumping Station.

The Donjek Pumping Station was one of a series of six stations in Canada constructed to pump fuel products across the Yukon into the U.S. in support of common defense efforts. Original construction and operation of these Stations was by the U.S. Military. Upon decommissioning, the stations ultimately were transferred to Indian and Northern Affairs Canada.

The Donjek Pumping Station is a sister design to the Haines Junction Pumping Station. The facility buildings and contents are virtually identical. The reader is encouraged to read the Haines Junction Pumping Station report in conjunction with this one, in that sample results for building components in one would also be true for the other. The conclusions based upon these similarities are often identical as well. The writer has used these shared features to the maximum benefit of the project.

This current investigation is supplementary to two previous investigations completed during 1995, which focussed on the yard areas outside the buildings rather than on the buildings and interior items. These two former investigations produced the documents entitled "*Haines Fairbanks Pipeline: Environmental Assessment of Beaver Creek, Donjek and Destruction Bay Pumping Stations*" (Lorimer & Associates, Hemmera Resource Consultants Ltd., 1995); and "*Preliminary Environmental Assessment Haines-Fairbanks Pipeline*", UMA Engineering, Ambio Research Associates, 1995).

In addition, DIAND personnel has previously collected and removed all of the ballasts from the overhead light fixtures at the Station. We presume that some of these ballasts contained PCB's, although this has not been confirmed.

The work at the Donjek Pumping Station was conducted during the period June 29th through August 15th, 1998.

2.0 Project Scope

The intent of this investigation was to produce a complete inventory of all major capital structures at the Donjek Station as well as any hazardous material components of these structures and their contents.

The term "inventory" includes both verification of the presence and quantity of hazardous materials on site.

3.0 Methodology

3.1 Review of Documents

We reviewed the documents "*Haines Fairbanks Pipeline: Environmental Assessment of Beaver Creek, Donjek and Destruction Bay Pumping Stations*" (Lorimer & Associates, Hemmera Resource Consultants Ltd., 1995); and "*Preliminary Environmental Assessment Haines-Fairbanks Pipeline*", UMA Engineering, Ambio Research Associates, 1995).

These documents were useful in that they suggest that there is not a lot of concern respecting contaminants outside the structures. In addition, their conclusion from swabs collected inside the buildings was that there was clearly not a concern with respect to free PCB's at the Station.

3.2 Health and Safety Plan

An emergency response procedure and safe work practices for each phase of the operation were devised to cover initial entry and subsequent entry for sampling and measurements.

The items of immediate concern related to interior darkness; building integrity; "sharps" on the floors; and the existence of pressure vessels, capacitors, friable asbestos, lead paint, and mercury (from pressure gauges and switches). Personal protective equipment selected and worn was appropriate during all phases of the project period, and included:

Initial tour:

- Generator, portable lights
- Ladder
- Tyvex suits
- Respirator (HEPA filter) protection
- Latex gloves
 - Camera
 - 2 way radios
 - Steel-toed boots with steel shanks
 - Rope
 - Sampling containers (liquids and solids)

The initial tour was undertaken by an environmental specialist and a demolition contractor, who will identify risk with respect to hazardous materials and building integrity.

Subsequent Entry

Safety gear and procedures as determined by risk factors determined during first entry.

3.3 Building Assessment

An inventory and table of general description and dimensions of each structure was prepared. This included preparation of a site/building layout drawing.

3.4 Equipment Inventory

Within each structure, we photographed and tabularized the equipment, machinery, stored product, and fixtures contained within. This included motors, engines, pumps, heating/cooling units, storage/holding tanks, compressors, boilers, overhead door units, and controls. Serial numbers, volumetric information, and manufacturers were recorded, and the general condition of each item was noted, particularly where there was opportunity for salvage or sale of the item.

3.5 Hazardous Materials Assessment

This assessment combined our experience on similar project sites with sample collection and verification by confirmatory analyses. The list of expected materials occurring included asbestos, glycol, antifreeze, lubricating oils, fuels, mercury, and lead paint. We confirmed the existence and quantity of asbestos-containing structural material and insulation, as well as pressurized vessels.

4.0 Inventory Results

Figure 1 provides a regional location map. Figure 2 provides a drawing of the major facilities (not to scale), complete with interior information on equipment location. The reader can refer to Figure 2 for locations in conjunction with both the Tables and the photographs, all of which are organized and presented on a room by room basis in each building, plus outside items.

Appendix A provides an overall pumping facility flow diagram for reference. Appendix B provides laboratory analyses results from samples selected for testing. Appendix C contains photographic records of all major items inventoried.

The inventory results are provided in tabular form below. Table 1 focuses on buildings and building components. Table 2 focuses on equipment, and Table 3 focuses on hazardous materials.

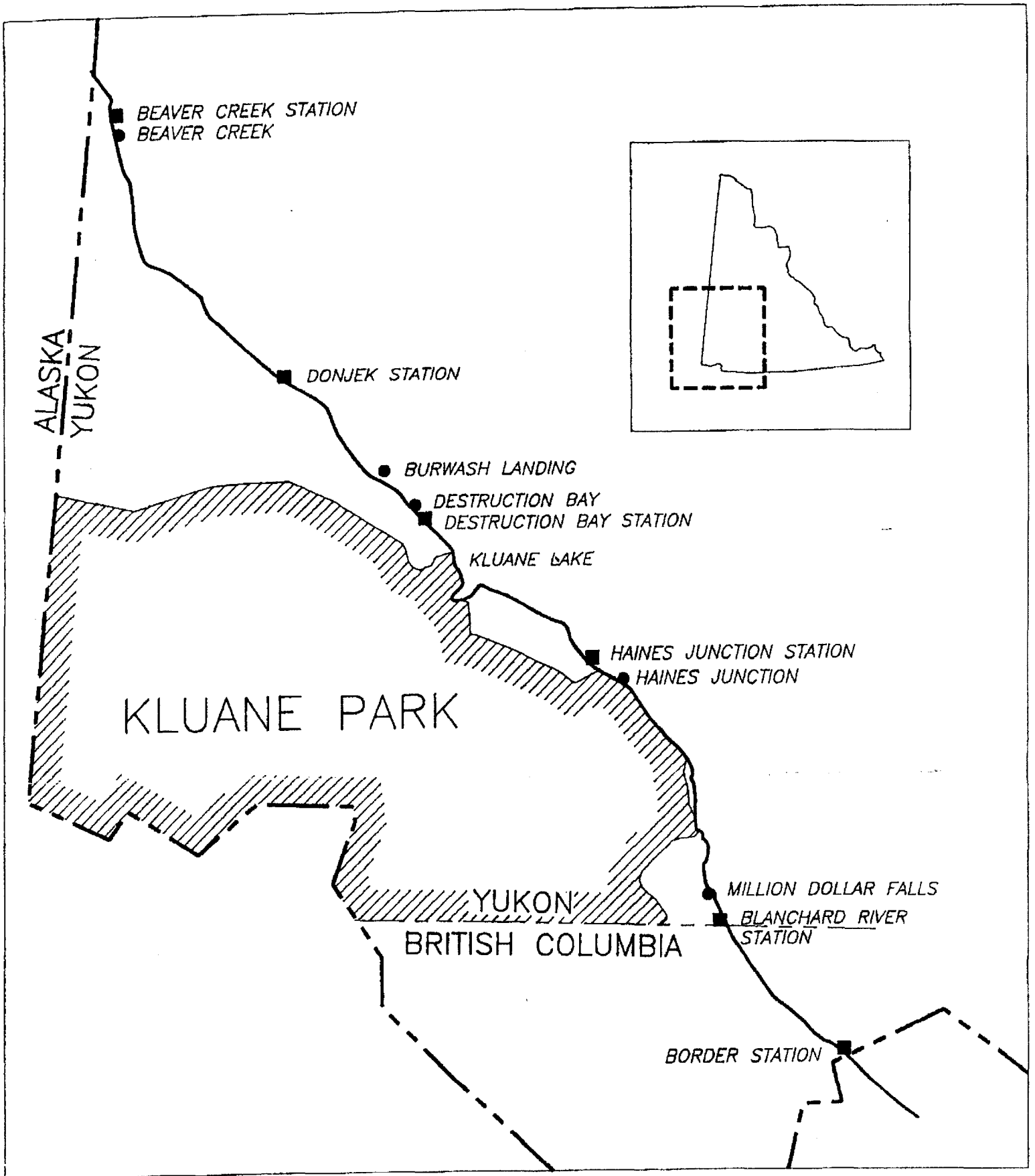


Figure 1 Site Layout

Reference List for Figure 2, Donjek Station

A. Main Building

1. Water tank room
2. Generator room
3. Mechanical Room/Shop
4. Maintenance fluid tank
5. Office
6. Washroom
7. Furnace room
8. Kitchen

B. Fan Building

C. Compressor building

9. Engine room
10. Engines
11. Maintenance fluid tank
12. Compressor room
13. Pumps
14. Furnace room

D Quanset Building

E Single Residence

F Multiple Residence

15-20 Residential units

G Tank Farm

- 21 Tank 21
- 22 Tank 22

Other

- 23 Bored well
- 24 Incinerator
- 25 Concrete vehicle fuel tank/pump island
- 26 Day tank
- 27 Sewer system
- 28 Boiler room

Figure 2. Site Layout Donjek Station

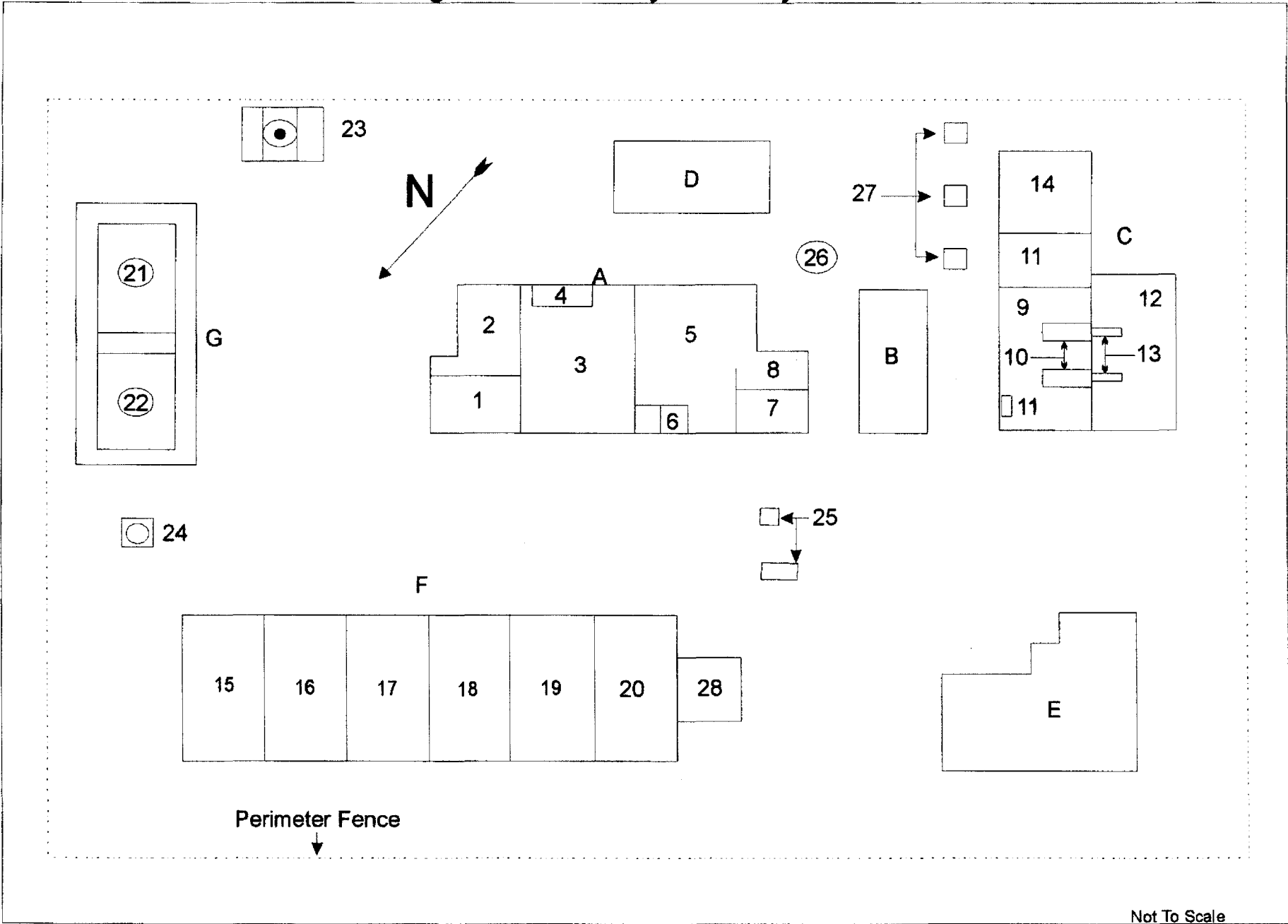


Table 1 Buildings and Building Components

Building Name	Drawing Identifier	Construction Components	Hazardous Components	General Dimensions	Currently Hazardous Entry	Condition
Main (water storage, generators, shop, office/ Kitchen.	A	<ul style="list-style-type: none"> • Steel truss on concrete pad foundation. Steel siding, drywall and asbestos board interior walls). • Fibreglass insulation inside walls 	Asbestos pipe insulation, asbestos floor tile, asbestos wallboard and lead paint on walls. Hazardous items housed inside building.	90'x32'	No current problem. Do not disturb asbestos or lead paint.	Significant vandalism
Pumphouse/ engine room/office/ furnace room.	C	Steel frame building on Concrete pad, steel siding, fibreglass inulation in walls.	Asbestos insulation in outside entry door, asbestos pipe insulation present, lead paint throughout, stored maintenance fluids.	65'x40'x	No, except if asbestos materials are broken or disturbed. Fall hazards present	Extensive vandalism and weather damage to building. Engines/ Pumps/ furnace salvageable.
Fan Building	B	Steel frame with metal cladding, concrete pad	No contents.	15'x31'	No.	No contents
Quanset Building	D	Steel frame building with metal cladding. Floor has been removed, except for steel support structure	No hazardous materials.	25'x50'	Hazardous only with respect to "sharps" on floor.	Extensive vandalism to contents. Building is salvageable.
Sewer system	27	Concrete pits (5), about 5' deep. Covers present	No hazardous materials.		Fall hazard.	N/A
Single Residence	E	Wood frame construction on full height concrete basement.	Asbestos in a few pipe joints, 1 mercury switch in basement.	37'x35'	No current hazard, unless asbestos and mercury disturbed.	Extensive vandalism and weather damage to building.
Multiple 2-storey Residence (6 Units)	15-20, 28	Wood frame construction on full height concrete basement.	Asbestos in pipe joints, 1 mercury switch in each basement.		Asbestos in basement units has been disturbed. Expected elevated fire	Extensive vandalism to building.

		Boiler room attached provides heat to units. Consists of water storage tanks and boiler/pressure system.	Extensive friable asbestos content.		count throughout building units Yes. Extremely hazardous area due to large quantity of loose asbestos, high fibre content.	Extensive vandalism to items inside building.
Power Poles	East/west through main yard	10 poles, with one equipped with a breaker box and dry transformer.	None apparent	Conventional	No	Good

Table 2: Identified Equipment Items

Item	Location(s)	Identifiers	General Condition
Compressor (air)	Engine room (9)		Engine missing off unit. Otherwise appears, although mechanically unknown. Unit properly mothballed
Pumps	Compressor Room 2 identical pump units, powered by engines from engine room	SN 295424 Type 4x6-4stg-0Lmx-set SN114 SN 296423 Type 4x6x9.5 Model 140HS100 SN111	Excellent, although mechanically unknown. Units properly mothballed
Overhead Heaters/furnaces	Shop (3) • 2 diesel heaters Compressor bldg (14) • 2 diesel furnaces Single Residence (E) • 1 diesel furnace in basement Engine room (2) • 1 overhead heater	Model # 057189M Cp-885594 Max fire rating 1.35 Model # 057189M Cp-885548 Max fire rating 1.35 No# L453753 ID # 0F4-259-1M SN # 5869K00071 No# L453798 ID # 0F4-259-1M SN # 5869K00072	All heater units appear to be in excellent, stored condition, although mechanically unknown. Units were all properly mothballed.
Water Tanks	Boiler room (28) • steel tank. Water room (1) • 2000 gallon steel high pressure tank.		Both in excellent condition, although coated with lead paint. Units properly mothballed by draining, and are re-usable. Covers remain off, but are present.
Generators	Generator room • Cat engine and generator	SN 8090003 TYPE ati CAT 2V6107 Engine 571057100 Type S0KW	Excellent, although mechanically unknown. Units properly mothballed

	<ul style="list-style-type: none"> Cat engine and generator 	<p>6 cylinders</p> <p>SN 8090002 Model 34G758 Cat 2V6106 Model D13000 Engine 57099</p>	
Fuel storage tanks	<p>Outside, within unlined berm: (G)</p> <ul style="list-style-type: none"> 500 barrel tank 1400 barrel tank <p>10 barrel heated day tank (26)</p> <p>1 underground fuel tank (25)</p>	<p>Apparently empty. Apparently empty.</p> <p>Apparently empty.</p> <p>Apparently empty (this tank was accessed through filler cap)</p>	<p>Good condition. No interior inspection on either tank.</p> <p>Good condition. No interior inspection</p> <p>Unknown condition</p>
Diesel Power Units	<p>Engine Room</p> <p>2 identical engines c/w gear drives for compressor pumps.</p> <p>Bolt mount units</p>	<p>SN S6912 TYPE 89cp RPM 705-805 Horsepower 372-425</p> <p>SN 56997 TYPE 89cp RPM 705-805 Horsepower 372-425</p>	<p>Excellent, although mechanically unknown. Units properly mothballed. Minor vandalism.</p>
Lighting	All rooms, fluorescent fixtures		All ballasts removed by DIAND personnel
Overhead Doors	Shop room (3) 2 overhead doors, 10'x10'.		Poor condition
Boilers	Boiler room (28) <ul style="list-style-type: none"> Boiler #1 		Significantly vandalized
Pressure Guages	Boiler, Generator, Compressor Rooms	Various. Estimated 20 guages	Unknown, although units intact.
Pipeline Components	Compressor Room.	Drained	Excellent, although mechanically unknown. Units properly mothballed
Control Panel Units	Generator room (2) Compressor room (12)	No serial numbers on units. Multiple guages on each panel, each with serial numbers	Excellent, although mechanically unknown. Units properly mothballed

Table 3: Identified Hazardous Materials

Material	Description	Location	Quantity	Current Risk
Asbestos	Asbestos wallboard	(A)	100 sheets	Current low risk. High risk if cut with power tools.
	Asbestos elbows and insulation on heating pipes.	(A,C,E,F)	150 joints	Current low risk. High risk if disturbed.
	Floor tile	(5,11,E,F)	1000 9"x9" tile	Current low risk. Moderate risk if disturbed.
	Boiler	(28)	1 cubic meter	Current high risk, friable asbestos has been disturbed by vandalism.
	Exterior cladding	(E)	37'x35' x12'	Moderate risk if disturbed.
	Door insulation	(C)	1 door	Current low risk, friable asbestos. High risk if disturbed. Low, unless disturbed Not friable. Low risk.
Glycol	Exposed to atmosphere for some time	Fluid maintenance tank, mechanical room.	Less than 4 gallons	Low
Oil/lubricants	Fluid maintenance container, Mechanical Room/shop	Fluid maintenance tank, mechanical room.	Less than 10 gallons	Low
Residual Fuel	UST's	None detected	None	None
Mercury	Beads of mercury in switch gear	(A,C,E,F)	Est 5 guages	Current low risk. High risk if released
PCB's	N/A	N/A		N/A
Lead Based Paint				

	Sample 98-04 4560 mg/kg	Paint chip on floor adjacent to freezer		Moderate
	Sample 98-05 2610 mg/kg	Water tank		Current low risk. Low risk if disturbed.
	Sample 98-09 2850 mg/kg	Floor paint under Boiler unit 1		Current low risk. Low risk if disturbed.
	Sample 98-13 7030 mg/kg	Green metal paint on engine components, engine room		Current low risk. High risk if disturbed.
	Sample 98-14 5830 mg/kg	Wall paint in office/control room		Current low risk. High risk if disturbed.
Solvents		Fluid maintenance tank, mechanical room.	Less than 2 gallons	Low
Random Chemicals (small quantities in containers)	Sodium carbonate	(A-5)	1 lb.	Low
	Sodium arsenide	(A-5)	300ml	
	Decolonizing Carbon	(A-5)	1L	

5.0 Conclusions

The following conclusions have been drawn from the inventory results.

State of the Structures

The structures at the Station which pose some risk include the following:

Main Building

- Asbestos
 - Asbestos floor tile in office
 - 100 sheets asbestos wallboard in office
 - 35' of 2" asbestos insulated pipe
 - 150' of 10" asbestos insulated pipe in water tank room
 - 70' of 4" asbestos insulated pipe in generator room
 - 100' of asbestos insulated "I" beam, 16' of 8" asbestos insulated pipe
- Possibly some mercury switches
- Lead paint throughout

Compressor Building

- Asbestos floor tile
- 26' of 10" pipeline, asbestos insulated
- Fall hazard
- Lead paint throughout

Quanset Building

- "sharps" hazard.

Single Residence

- 50' asbestos pipe wrap
- Asbestos floor tile in kitchen
- One mercury switch
- "sharps" hazard

Multiple residence

- 50' asbestos pipe wrap each unit
- Asbestos floor tile in kitchen
- Severe asbestos hazard in boiler room

General

- One concrete underground storage tank remains on site and should be properly disposed of.
- There are no lights within any of the structures, and general entry should continue to be restricted until this is changed. A qualified electrician should thoroughly examine the electrical system before power is restored.

- There is lead paint on the floors and walls of each structure. Loose paint chips should be removed and disposed of as hazardous waste by a qualified contractor before the buildings are reused for any purpose.
- Previous reports indicate that there are no PCB's in the Station (previous report). Light ballasts have been removed by DIAND personnel.
- Glycol has been removed from all lines.
- There are no pressure vessels still charged.
- Only small quantities (estimated less than 50 gallons) of fuel, oil, and other liquid maintenance products remain at the station.
- Asbestos removal procedures applied by a qualified asbestos contractor must be undertaken to ensure that other equipment and building components are not contaminated by asbestos fibres during removal.
- The presence of lead paint has been confirmed throughout the Station on floor/wall paint and on equipment housed within. Lead removal procedures applied by a qualified contractor must be undertaken to ensure that other equipment and building components are not contaminated by lead dust during removal. The most feasible option is to remove loose paint chips and dispose of this material as hazardous waste. Paint that is currently in good shape can be encapsulated with acceptable paint or by wallboard.
- Lead paint on engines, steel piping, etc. can be safely removed from the Main Building without concern during removal of these items. Whoever accepts these removed items must be warned of the lead paint concern.

Appendix A
System Flow Diagram

Appendix B
Laboratory Results

Style 1 BC, DJ
 Style 2 DJ, HJ.

E807214 CONT...
 PAGE 4

ENVIRO-TEST CHEMICAL ANALYSIS REPORT

LAB ID	SAMPLE ID	TEST DESCRIPTION	RESULT	D.L.	UNITS	EXTRACTED	ANALYZED	BY
E807214-25	88-33	Res Walls DJ						
Sample Type: BULK								
E807214-26	88-04	floor outside freezer BC	4860	10	mg/kg		07/09/98	GC
Sample Type: BULK		Lead, (Pb)						
E807214-27	88-14	Wall Paint office BC	5830	10	mg/kg		07/09/98	GC
Sample Type: BULK		Lead, (Pb)						
E807214-28	88-21	Compressor Room DJ	53800	10	mg/kg		07/09/98	GC
Sample Type: BULK		Lead, (Pb)						
E807214-29	88-46	Grey siding HJ	43300	10	mg/kg		07/09/98	GC
Sample Type: BULK		Lead, (Pb)						
E807214-30	88-47	Water tank HJ	4110	10	mg/kg		07/09/98	GC
Sample Type: BULK		Lead, (Pb)						
E807214-31	88-13	Metal Paint Eng Room BC	7030	10	mg/kg		07/09/98	GC
Sample Type: BULK		Lead, (Pb)						
E807214-32	88-09	floor Boiler Room BC	2850	10	mg/kg		07/09/98	GC
Sample Type: BULK		Lead, (Pb)						
E807214-33	88-42	Green Eng. Block HJ	60800	10	mg/kg		07/09/98	GC
Sample Type: BULK		Lead, (Pb)						
E807214-34	88-43	Light Green office HJ	6260	10	mg/kg		07/09/98	GC
Sample Type: BULK		Lead, (Pb)						
E807214-35	88-44	White o Plice HJ	4050	10	mg/kg		07/09/98	GC
Sample Type: BULK		Lead, (Pb)						
E807214-36	88-48	Apt Paint (inside) HJ	1880	10	mg/kg		07/09/98	GC
Sample Type: BULK		Lead, (Pb)						
E807214-37	88-05	Water tank BC	2610	10	mg/kg		07/09/98	GC
Sample Type: BULK		Lead, (Pb)						
E807214-38	88-45	Multi-Comp Room HJ	43500	10	mg/kg		07/08/98	GC
Sample Type: BULK		Lead, (Pb)						
E807214-39	88-41	HJ						
Sample Type: SOIL		TVN and TEN in Soil % Moisture	2.3	0	%		07/08/98	MD

E807214 Cont...
PAGE 2**ENVIRO-TEST CHEMICAL ANALYSIS REPORT****EST: Bulk Asbestos Content****METHOD:NIOSH 9002**

AMPLE DESCRIPTION	LAB-ID	Asbestos Type	Percent * Asbestos	Other Fibres Present
8-11 Gen Stack Insul.	E807214-01	AMOSITE	50	NONE
8-30 Res Boiler	E807214-02	AMOSITE*	50	MMVF
8-40 Haines Door	E807214-03	CHRYSOTILE	40	MMVF
8-12 Asb above HWT	E807214-04	CHRYSOTILE	70	MMVF
8-25 Pipe wrap	E807214-05	N.D.	<1	ORG, SYN
8-51 Boiler outside Insulation	E807214-06	AMOSITE	50	MMVF, OTHERS*
8-26 office ceiling	E807214-07	N.D.	<1	ORG
8-24 pipe wrap	E807214-08	N.D.	<1	ORG
8-27 insulation quanset	E807214-09	N.D.	<1	MMVF
8-29 I-beam filter	E807214-10	TREMOLITE	1	SYN
8-28 Ins. machine shop	E807214-11	N.D.	<1	MMVF
8-23 floor tile	E807214-12	CHRYSOTILE	5	SYN
8-20 Product PL Insul	E807214-13	N.D.	<1	NONE
8-50 Apt Boiler door	E807214-14	CHRYSOTILE	10	MMVF, ORG
8-49 Pipe Ins Apt Boiler Room	E807214-15	CHRYSOTILE	70	MMVF
8-08 Res tile Pipe Ins	E807214-16	N.D.	<1	MMVF
8-32 Res Tile	E807214-17	CHRYSOTILE	5	NONE
8-31 Res Basement	E807214-18	CHRYSOTILE**	40	MMVF
8-07 Elbow	E807214-19	CHRYSOTILE	5	MMVF
8-10 Boiler pipe #1	E807214-20	CHRYSOTILE	80	MMVF
8-06 Boiler ceramic	E807214-21	N.D.***	<1	MMVF
8-11 Boiler exterior Ins	E807214-22	N.D.	<1	MMVF
8-02 Brick	E807214-23	N.D.	<1	NONE

N.D. - None Detected.

Percent asbestos determined by visual approximation.

MMVF-man-made vitreous fibres; Org. - organic fibres

Method: Polarized microscopy/dispersion staining.

THIS IS THE LAST PAGE OF THE ASBESTOS REPORT.

Appendix C
Photographs of Station



Main building. Front of building, which houses office, shop, generator room, and water supply.



Main building. View of front from opposite end.



Main Building. Back side. Building is metal frame structure on concrete pad.



Main Building. View from opposite end.



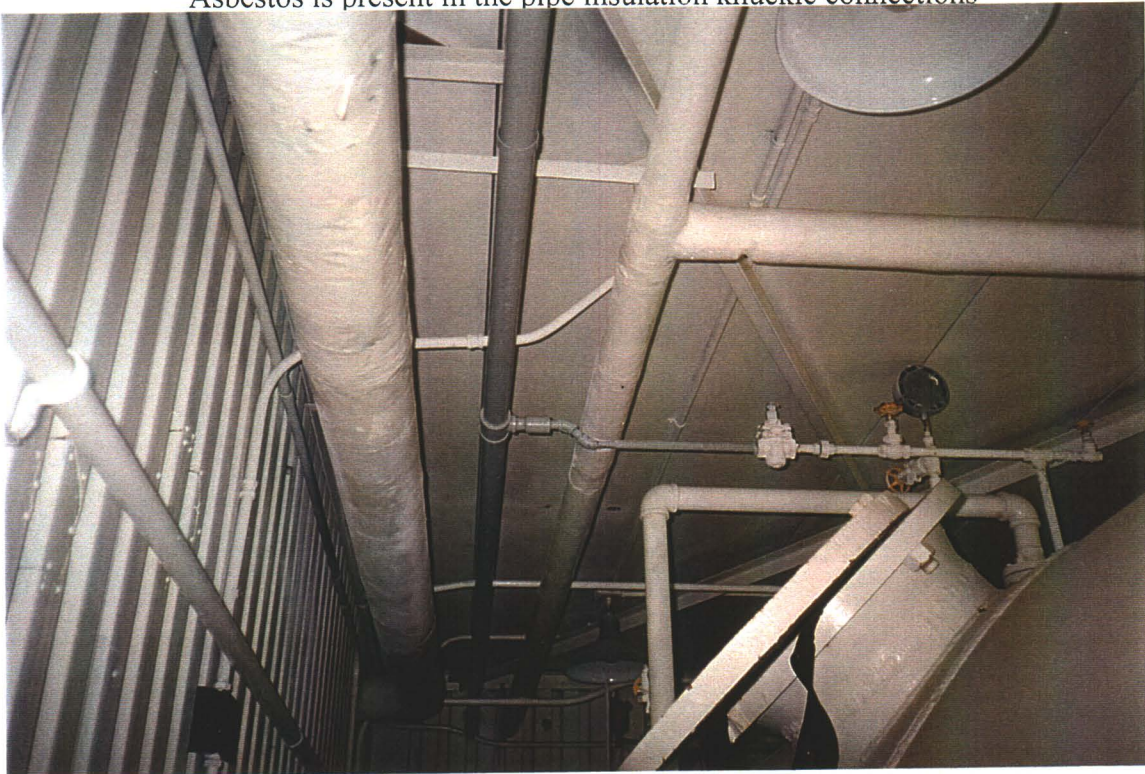
Main Building. Sections of old pipeline stored here.
Contain accumulated hydrocarbon/wax deposit.



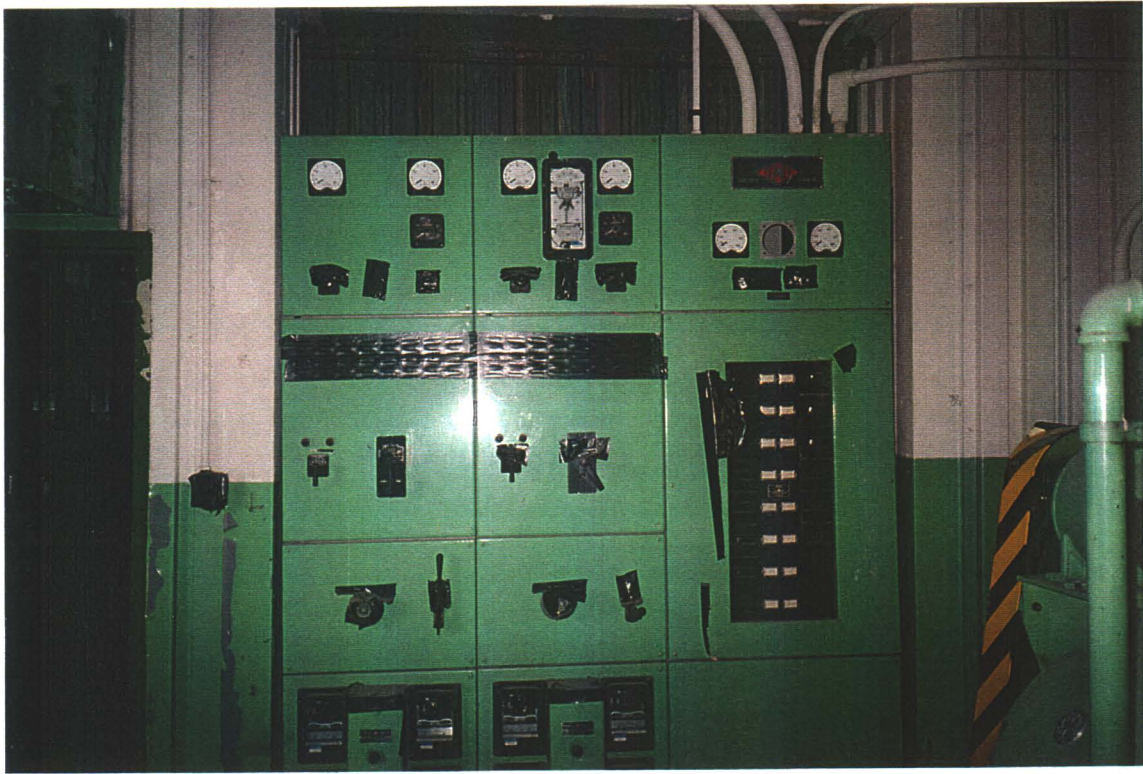
Main Building. Pails of hydrocarbon contaminated
soil associated with stored sections of pipeline.



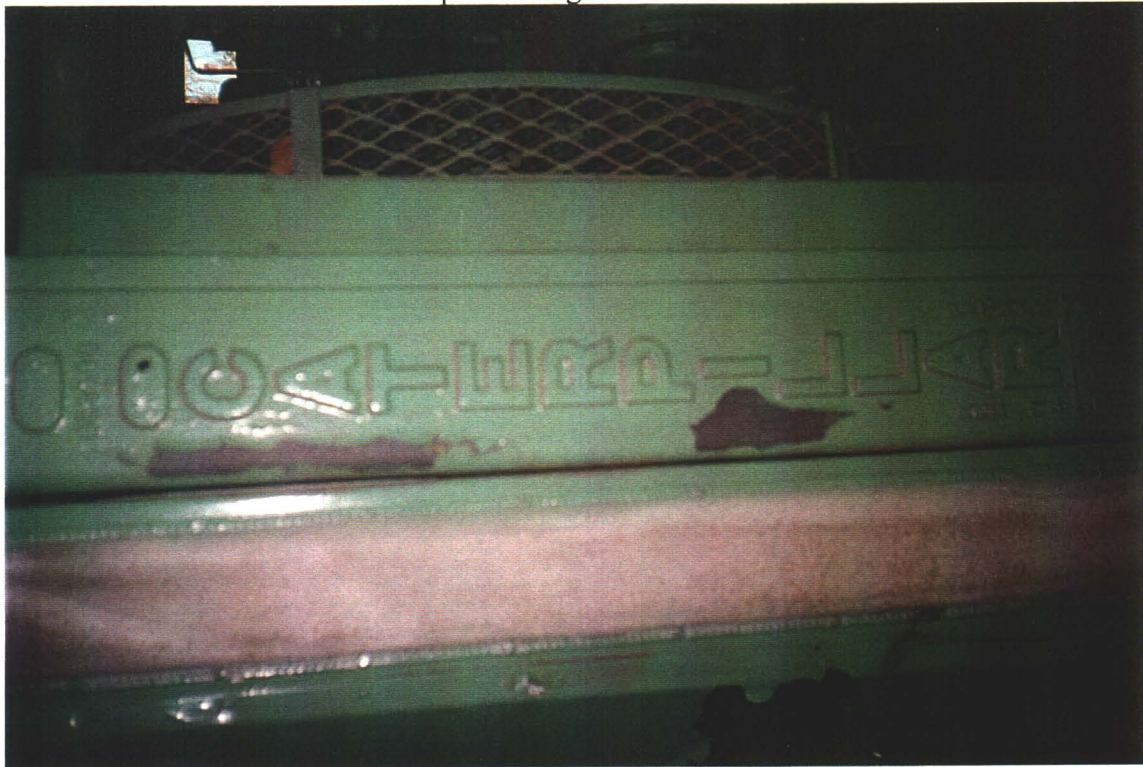
Main Building. Water Storage Room. This room houses a drained water tank and various flow metering devices and pressure system. Asbestos is present in the pipe insulation knuckle connections



Main Building. Water Storage Room. Ceiling pipes above tank. Lead paint is present throughout.



Main Building. Generator Room. Control panel, possibly containing mercury switches. Green paint is high in lead content.



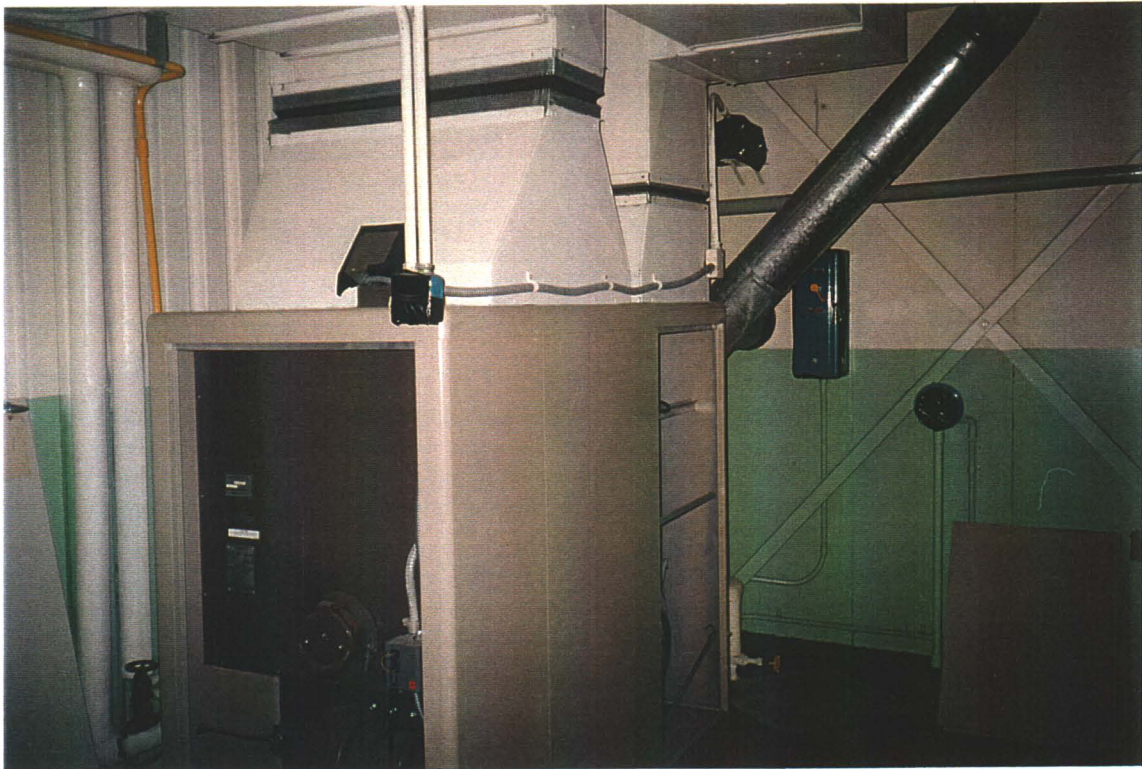
Main Building, Generator Room. Gasket connection on engine cooling unit.



Main Building, Office Room. Note asbestos floor tiles and lead paint on walls. Interior walls are asbestos wallboard.



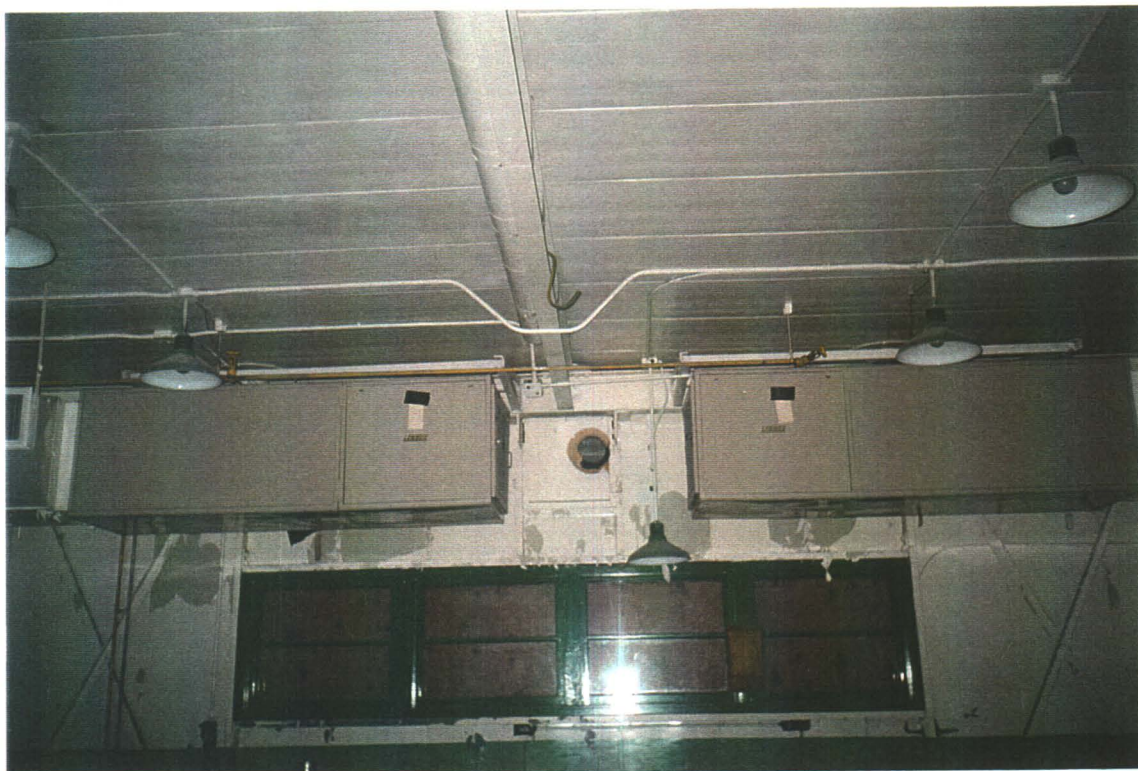
Main Building, Office Room. Kitchen area, with collection of non-hazardous chemicals. Drop ceiling is asbestos free. Piping above has asbestos content, at least in knuckles.



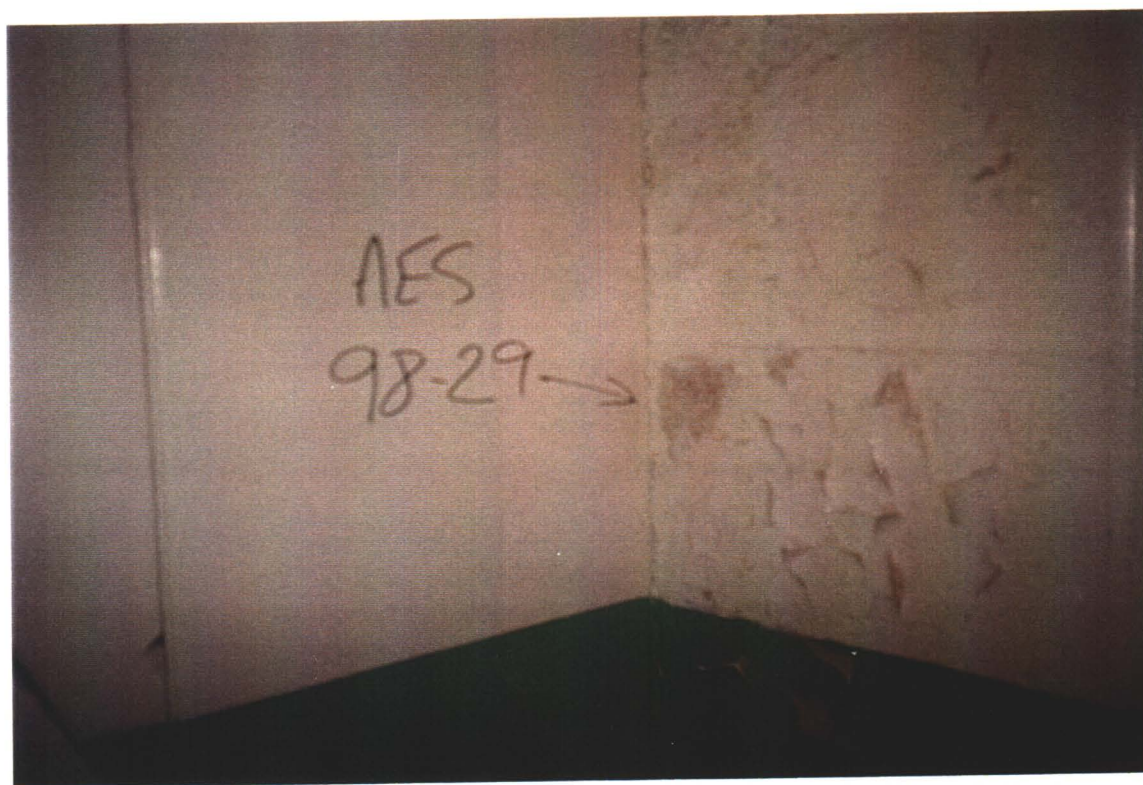
Main Building, Office Room furnace area. Interior walls are asbestos, as are pipe joints. Mercury switches in electrical circuitry.



Main Building, Shop. Service fluid storage tank, intact with no leaks.



Main Building, Shop. Overhead heat exchanger.
Note lead paint peeling from metal walls on building interior.



Main Building, Shop. Asbestos-filler in I-beams. Friable asbestos.



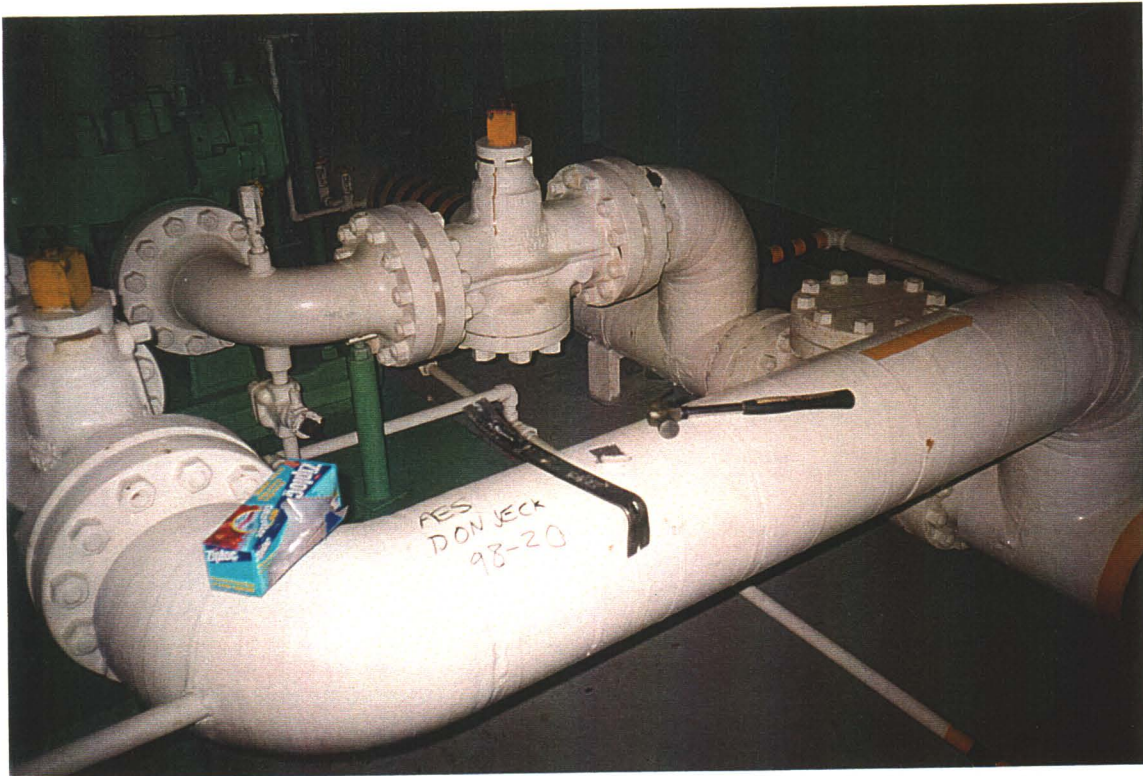
Air Intake Building. Empty, no environmental concern.



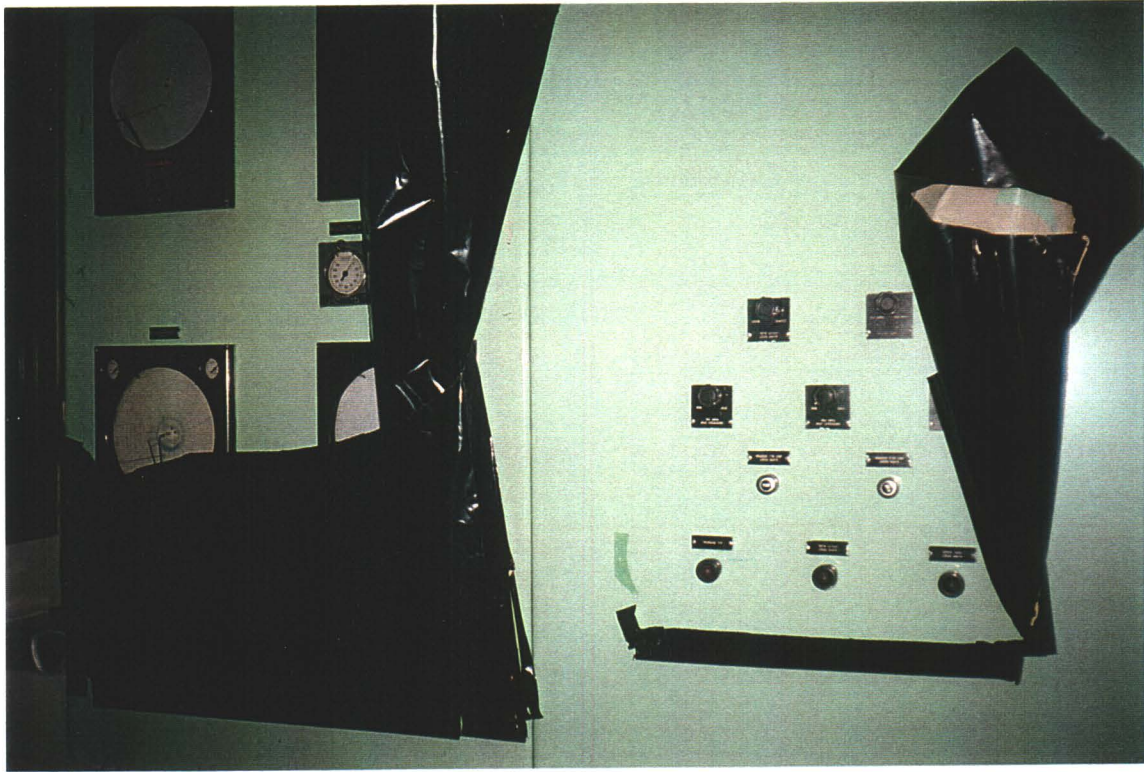
Compressor Building. Flaking green lead-based paint common to all equipment components.



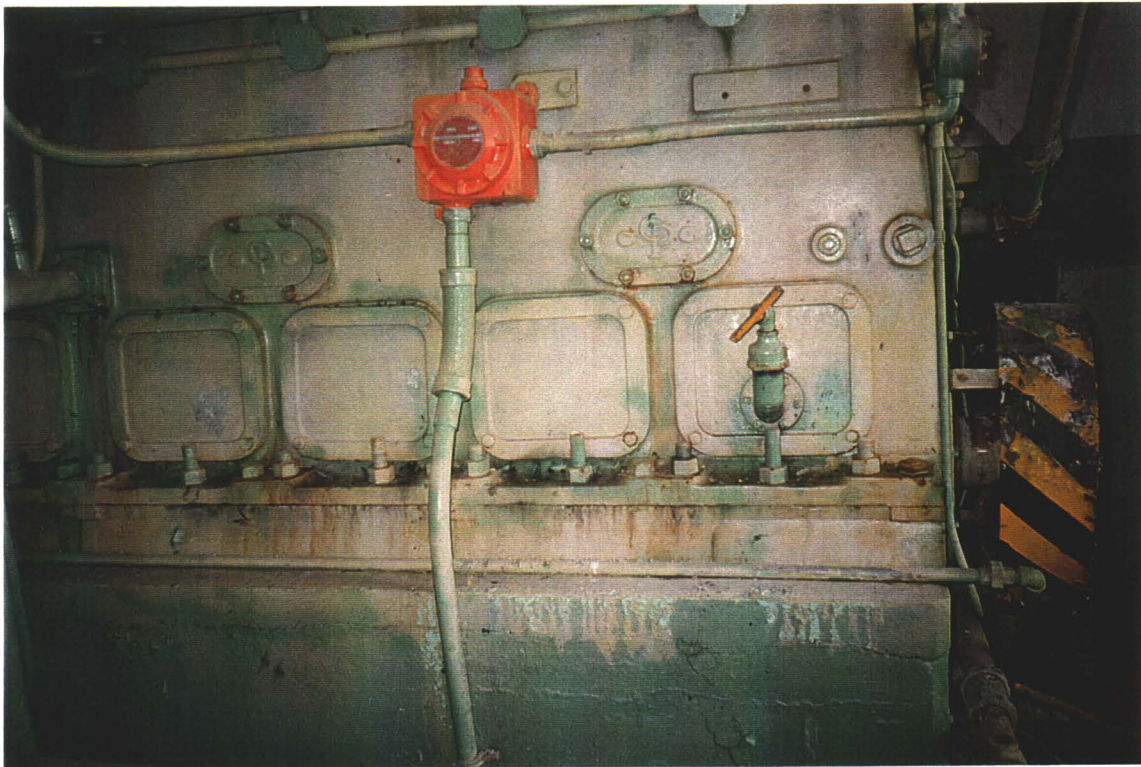
Compressor Building. Pump unit. Note fluid drained from mothballed unit.



Compressor Building. Piping section.
Both green and white paint tested positive for lead content.



Compressor Building. Control panel, may contain mercury switches.



Compressor Building. Engine Room. One of two engine units to power compression pumps. Engine completely mothballed, including drained of antifreeze.



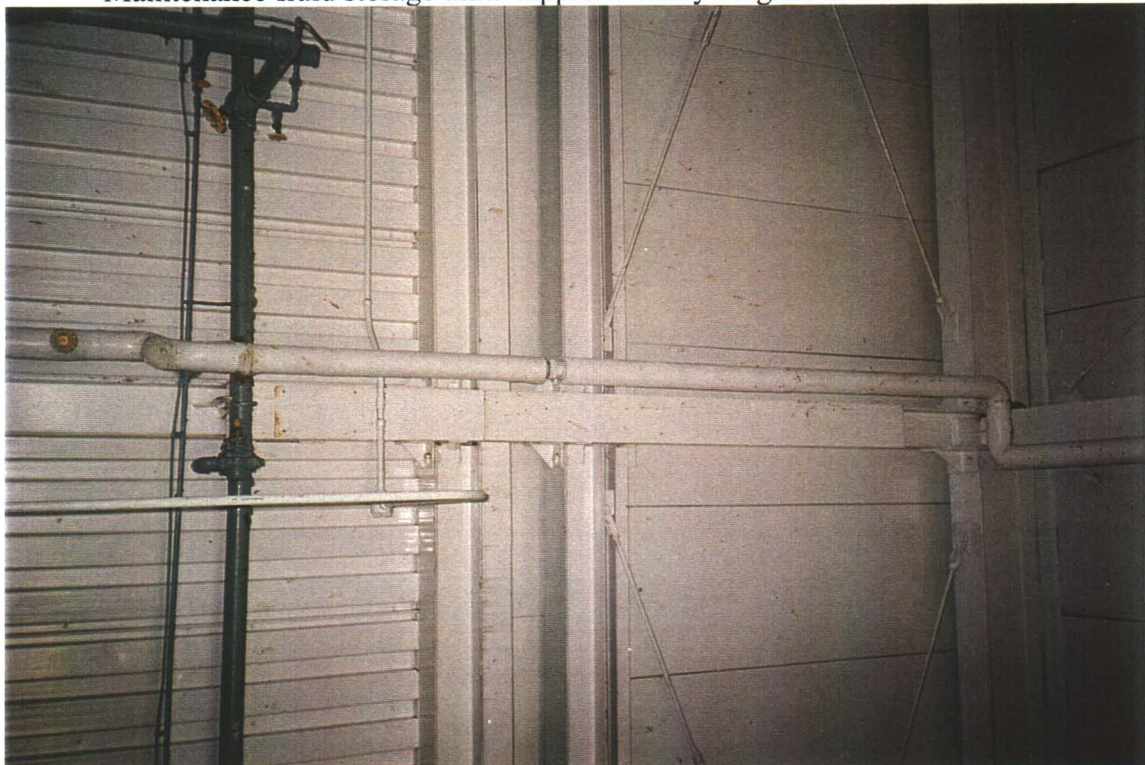
Compressor Building, Engine Room.
Small compressor unit gone, but 3 phase motor and pressure tank remain.



Compressor Building, Engine Room.
Pit below engines. Contains water only. No environmental concern.



Compressor Building, Engine Room.
Maintenance fluid storage unit. Approximately 30 gallons of fluid remain.



Compressor Building, Engine Room.
Ceiling piping, containing asbestos in knuckles.



Compressor Building, Office Room.
Sample from ceiling tile confirms no asbestos content.



Interior of Quanset. Extensive vandalism. No asbestos.



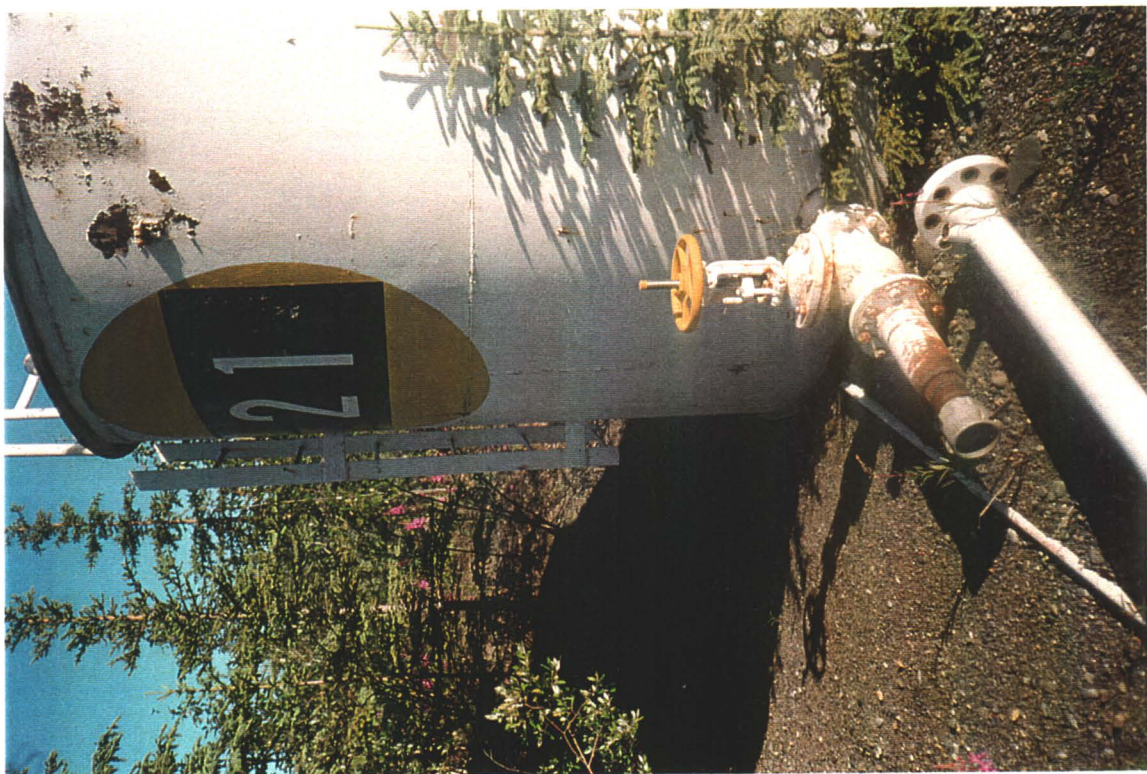
Interior of Quanset. Detail of bolt-together structure.



Interior of Quanset. Loose fibreglass insulation.



Bulk fuel storage tank, 1 of 2. Empty.



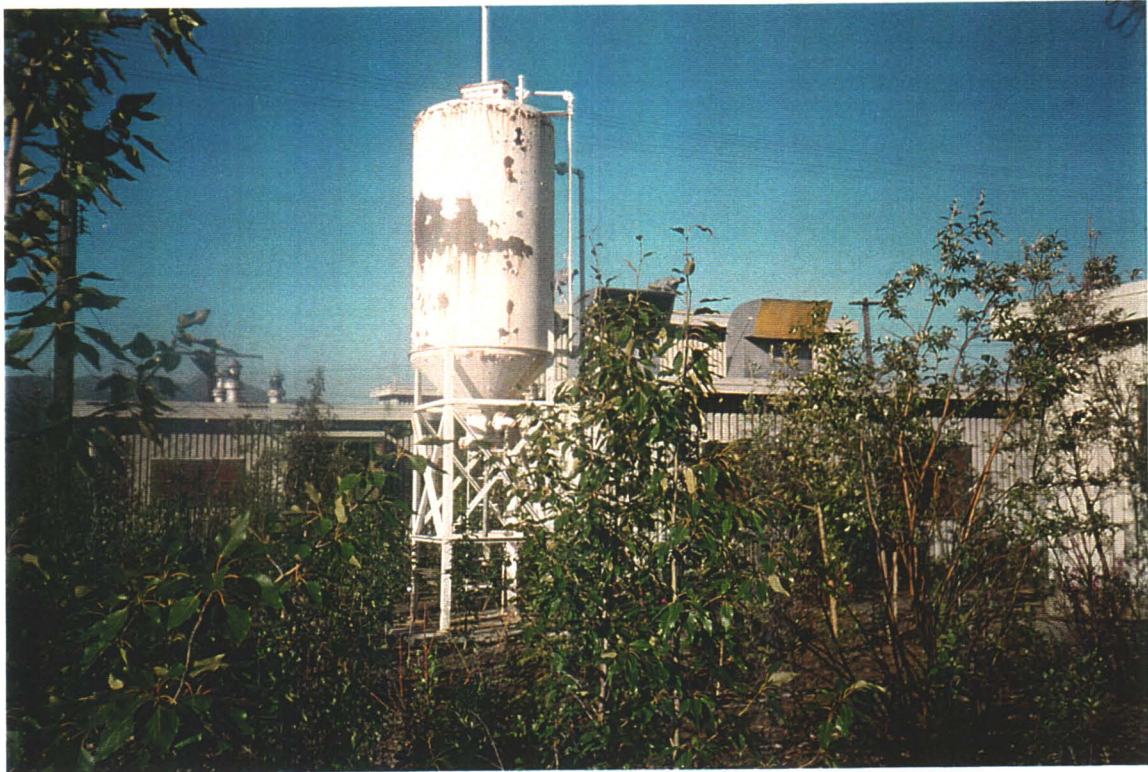
Bulk fuel storage tank, 2 of 2. Empty.



Pump island for vehicle fuel.



Concrete underground storage tank(s) for vehicle fuel.



Day tank



Typical pipe system tie-ins



Sewage system vault array.



Detail of vault interior.



Typical power pole array, both frames. Power disconnected.
No pole-mount transformers.





Single Residence, exterior front.



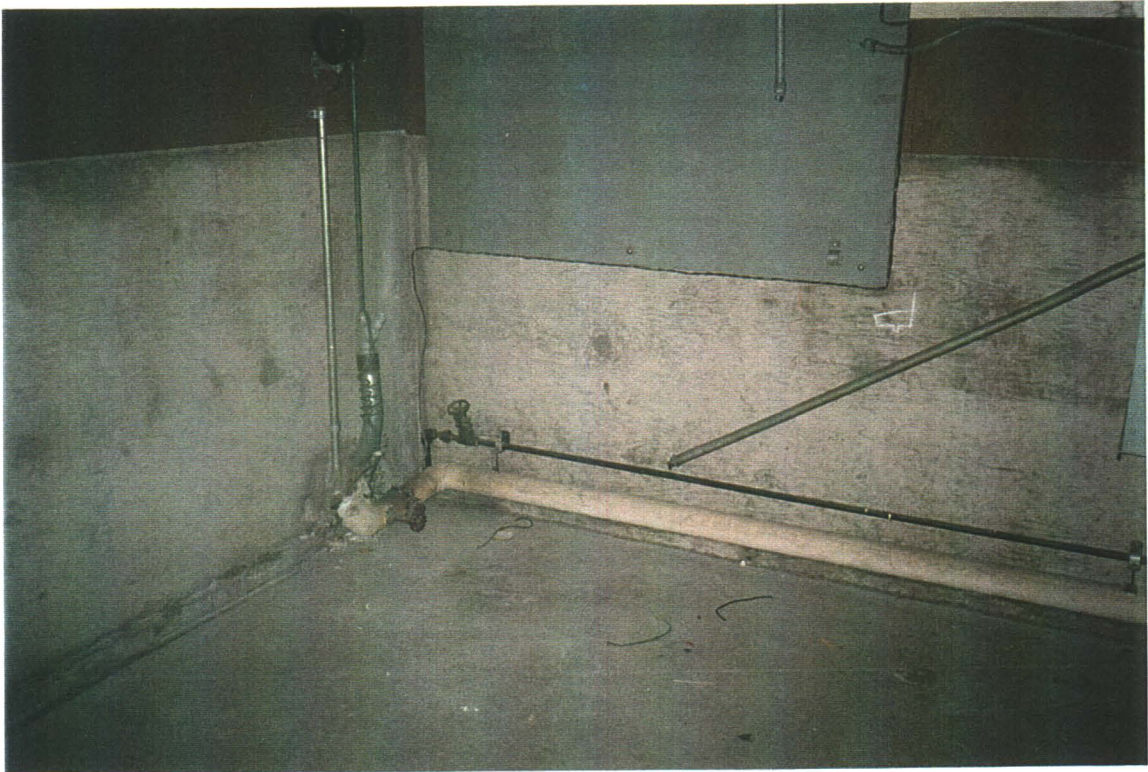
Single Residence. Note white asbestos cladding.



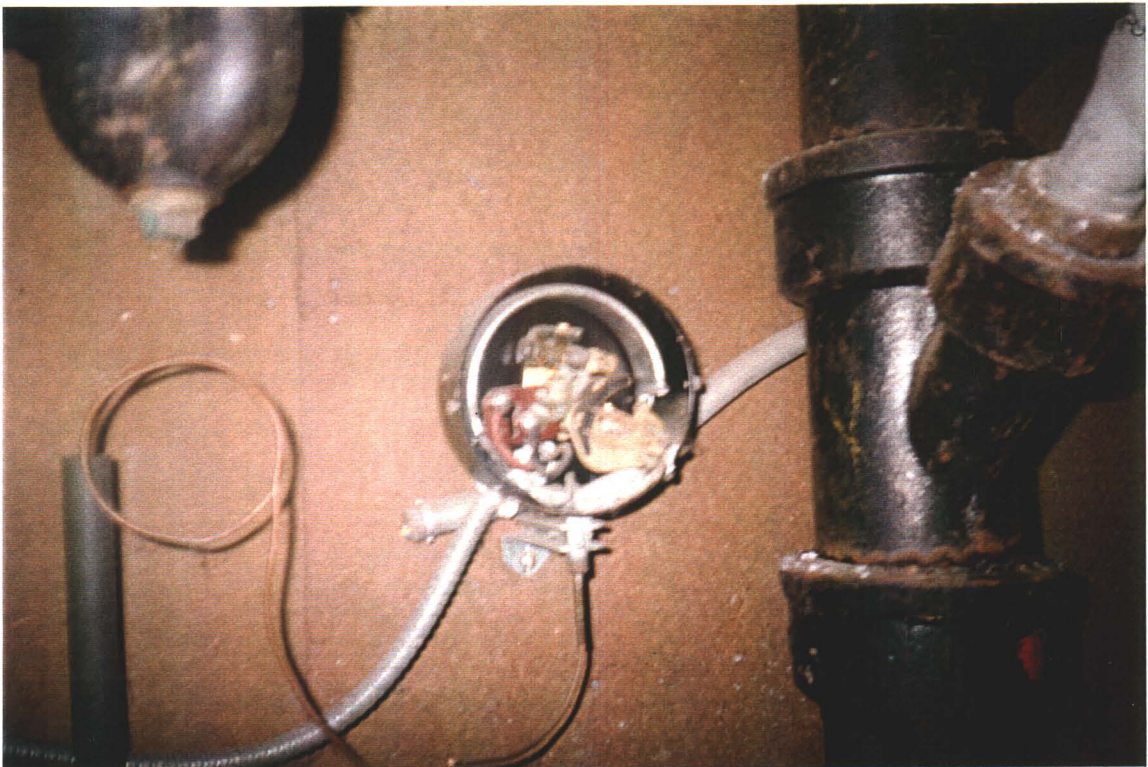
Single Residence. Interior bedroom. No evidence of asbestos on main floor.



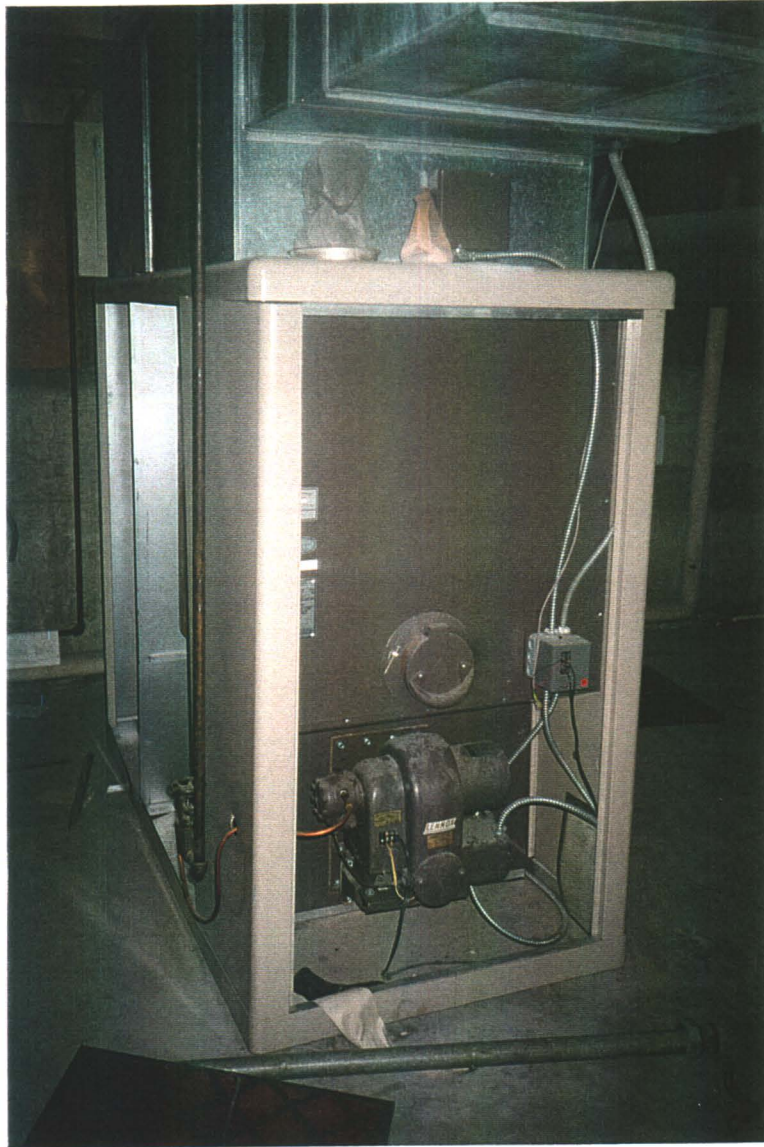
Single Residence. Note extensive vandalism.



Single Residence. Detail of basement piping. Asbestos knuckles present.



Single Residence, basement. Note mercury-containing electrical control switch.



Single Residence, basement oil-fired furnace for building heat.



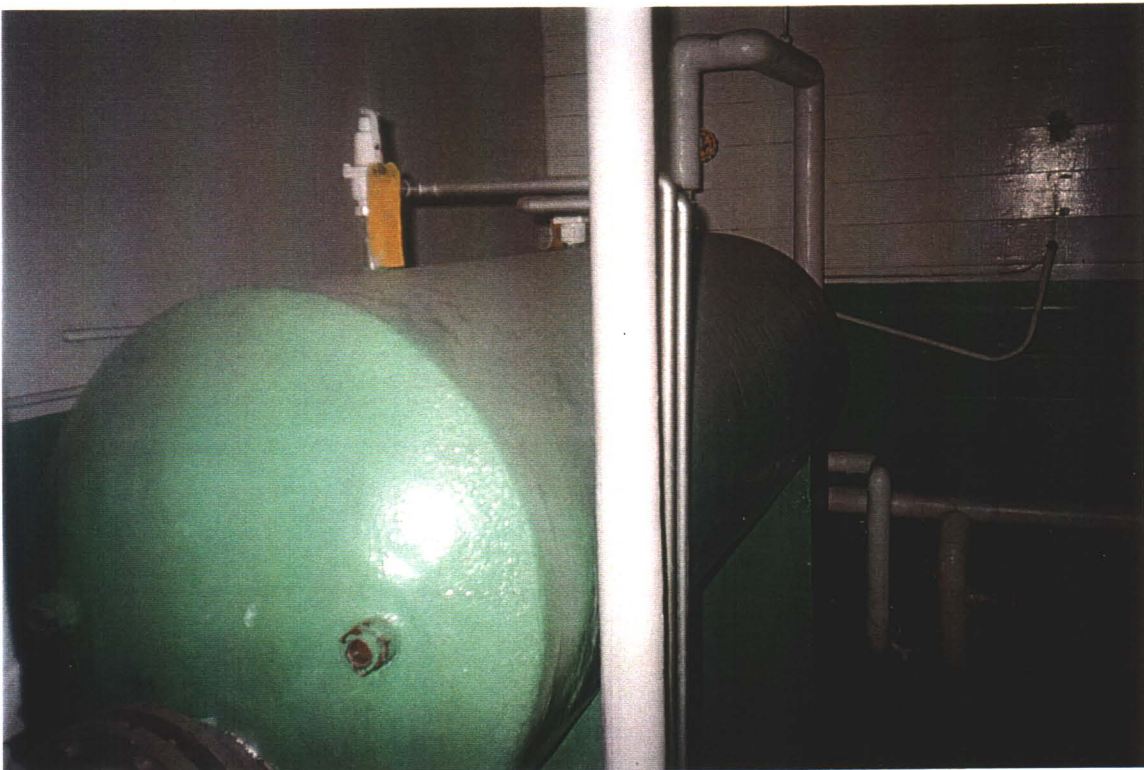
Multi-family Dwelling, exterior. Wooden siding, coated with lead-based paint.



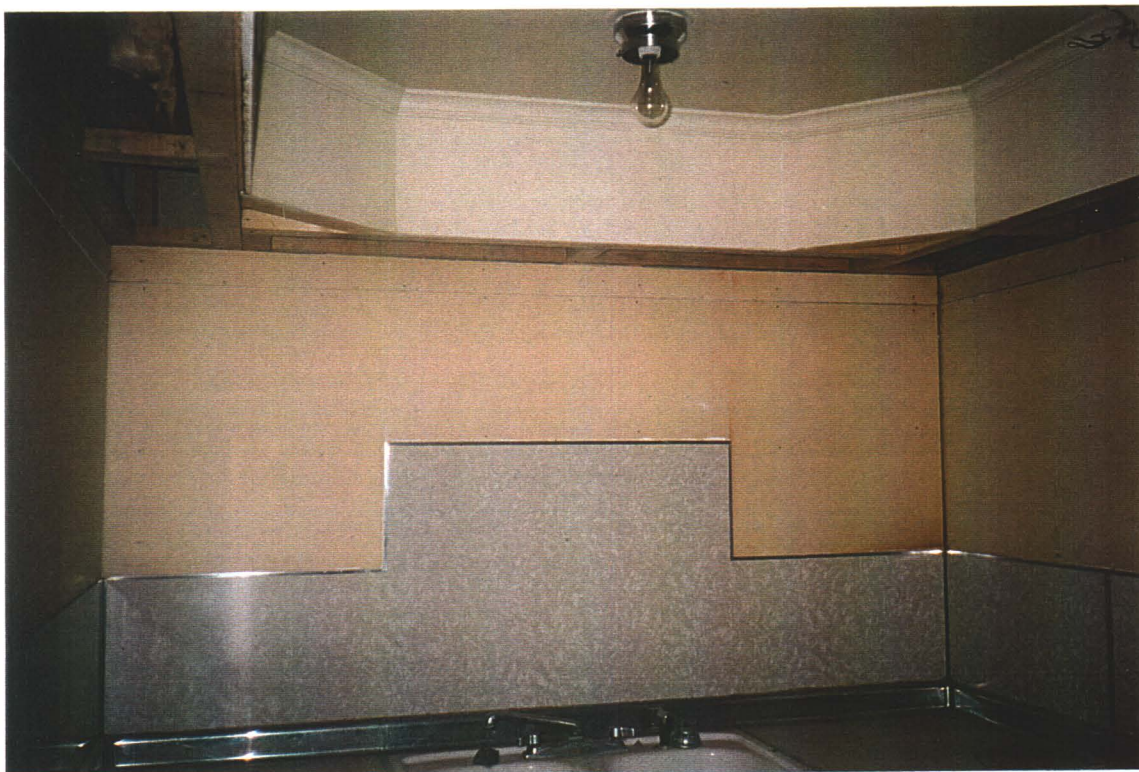
Multi-family Dwelling. Exterior view. Lower end building is the boiler house, which supplies heat to this dwelling as well as to Main Building and Compressor Building by underground steam piping system.



Multi-family Dwelling, Boiler Room. Boiler and tanks present. Friable asbestos present in abundance due to vandalism. Very hazardous conditions.



Multi-family Dwelling, Boiler Room tank.



Multi-family Dwelling, interior kitchen. No asbestos present, except for knuckles in heating system pipes, which are inside walls.



Multi-family Dwelling, living room. Note asbestos floor tiles.



Multi-family Dwelling, basement. Note extensive vandalism, including exposure of asbestos containing materials (knuckles only) in pipe insulation. This has created hazardous conditions throughout the building, as asbestos fibres move with the airflow.