

**Inventory of Equipment, Machinery,
Major Fixtures and Hazardous Materials
at the Beaver Creek Pumping Station,
Yukon Territories.**

**Prepared for
Indian and Northern Affairs Canada**

July, 1998

**Prepared by
Arctic Environmental Services Ltd., and KO KEN General Contractors**

Table of Contents

	Page
1.0 Introduction	1
2.0 Project Scope	1
3.0 Methodology	1
3.1 Review of Documents	1
3.2 Health and Safety Plan	2
3.3 Building Assessment	2
3.4 Equipment Inventory	2
3.5 Hazardous Materials Assessment	3
4.0 Inventory Results	3
5.0 Conclusions	14

List of Figures

Figure 1 Site Layout

Figure 2 Locations of Major Equipment

List of Appendices

Appendix A System Flow Diagram

Appendix B Laboratory Results

Appendix C Photographs of Station

1.0 Introduction

Indian and Northern Affairs Canada (DIAND) contracted Arctic Environmental Services Ltd., and KO KEN General Contractors to complete an inventory of equipment, machinery, major fixtures and hazardous materials at the Beaver Creek Pumping Station.

The Beaver Creek Pumping Station was one of a series of six stations in Canada constructed to pump fuel products across the Yukon into the U.S. in support of common defense efforts. Original construction and operation of these Stations was by the U.S. Military. Upon decommissioning, the stations ultimately were transferred to Indian and Northern Affairs Canada.

This current investigation is supplementary to two previous investigations completed during 1995, which focussed on the yard areas outside the buildings rather than on the buildings and interior items. These two former investigations produced the documents entitled "*Haines Fairbanks Pipeline: Environmental Assessment of Beaver Creek, Donjek and Destruction Bay Pumping Stations*" (Lorimer & Associates, Hemmera Resource Consultants Ltd., 1995); and "*Preliminary Environmental Assessment Haines-Fairbanks Pipeline*", UMA Engineering, Ambio Research Associates, 1995).

In addition, DIAND personnel has previously collected and removed all of the ballasts from the overhead light fixtures at the Station. We presume that some of these ballasts contained PCB's, although this has not been confirmed.

The work at the Beaver Creek Pumping Station was conducted during the period June 29th through July 15th, 1998.

2.0 Project Scope

The intent of this investigation was to produce a complete inventory of all major capital structures at the Beaver Creek Station as well as any hazardous material components of these structures and their contents.

The term "inventory" includes both verification of the presence and quantity of hazardous materials on site.

3.0 Methodology

3.1 Review of Documents

We reviewed the documents "*Haines Farbanks Pipeline: Environmental Assessment of Beaver Creek, Donjek and Destruction Bay Pumping Stations*" (Lorimer & Associates, Hemmera Resource Consultants Ltd., 1995); and "*Preliminary Environmental*

Assessment Haines-Fairbanks Pipeline", UMA Engineering, Ambio Research Associates, 1995).

These documents were useful in that they suggest that there is not a lot of concern respecting contaminants outside the structures. In addition, their conclusion from swabs collected inside the buildings was that there was clearly not a concern with respect to free PCB's at the Station.

3.2 Health and Safety Plan

An emergency response procedure and safe work practices for each phase of the operation were devised to cover initial entry and subsequent entry for sampling and measurements.

The items of immediate concern related to interior darkness; building integrity; "sharps" on the floors; and the existence of pressure vessels, capacitors, friable asbestos, lead paint, and mercury (from pressure guages and switches). Personal protective equipment selected and worn was appropriate during all phases of the project period, and included:

Initial tour:

- Generator, portable lights
- Ladder
- Tyvex suits
- Respirator (HEPA filter) protection
- Latex gloves
 - Camera
 - 2 way radios
 - Steel-toed boots with steel shanks
 - Rope
 - Sampling containers (liquids and solids)

The initial tour was undertaken by an environmental specialist and a demolition contractor, who will identify risk with respect to hazardous materials and building integrity.

Subsequent Entry

Safety gear and procedures as determined by risk factors determined during first entry.

3.3 Building Assessment

An inventory and table of general description and dimensions of each structure was prepared. This included preparation of a site/building layout drawing.

3.4 Equipment Inventory

Within each structure, we photographed and tabularized the equipment, machinery, stored product, and fixtures contained within. This included motors, engines, pumps, heating/cooling units, storage/holding tanks, compressors, boilers, overhead door units,

and controls. Serial numbers, volumetric information, and manufacturers were recorded, and the general condition of each item was noted, particularly where there was opportunity for salvage or sale of the item.

3.5 Hazardous Materials Assessment

This assessment combined our experience on similar project sites with sample collection and verification by confirmatory analyses. The list of expected materials occurring included asbestos, glycol, antifreeze, lubricating oils, fuels, mercury, and lead paint. We confirmed the existence and quantity of asbestos-containing structural material and insulation, as well as pressurized vessels.

4.0 Inventory Results

Figure 1 provides a regional location map. Figure 2 provides a measured drawing of the main building (and surrounding structures, not to scale), complete with interior information on equipment location. The reader can refer to Figure 2 for locations in conjunction with both the Tables and the photographs, all of which are organized and presented on a room by room basis in the main building, plus outside items.

Appendix A provides an overall pumping facility flow diagram for reference. Appendix B provides laboratory analyses results from samples selected for testing. Appendix C contains photographic records of all major items inventoried.

The inventory results are provided in tabular form below. Table 1 focuses on buildings and building components. Table 2 focuses on equipment, and Table 3 focuses on hazardous materials.

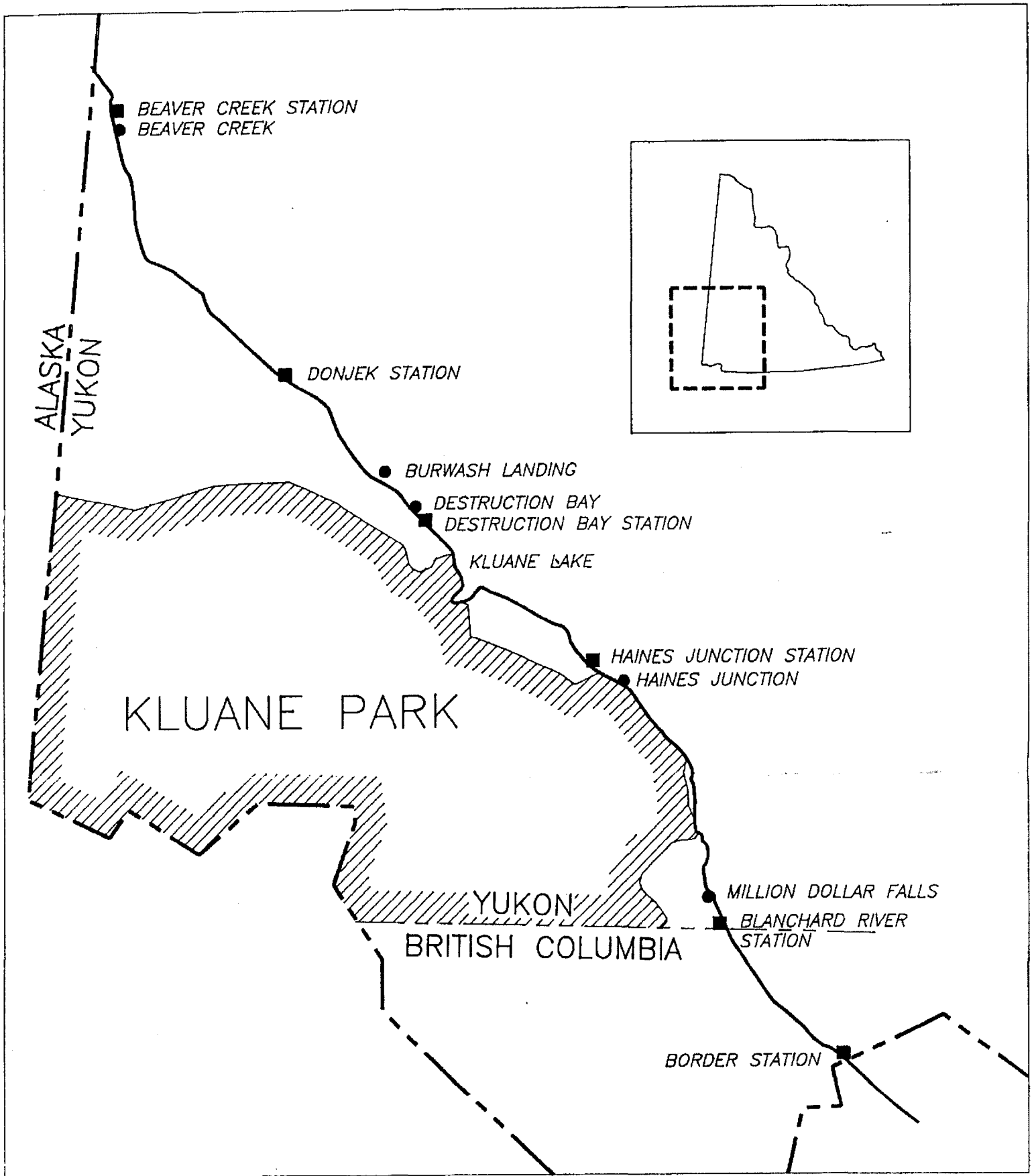


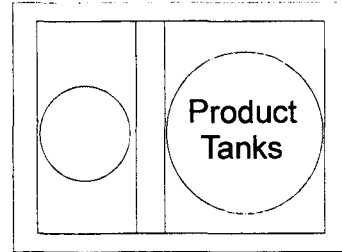
Figure 1 Site Layout

List Of Items

1. Shelf Unit
2. Maintenance Liquid Storage
3. Counter / Shelves
4. Open Storage
5. Shelf Storage
6. Walk - In Cooler
7. Walk - In Freezer
8. Water Storage Tank
9. Two Coolant Compressors
10. Boiler
11. Boiler
12. Pressure Tank (Liquid)
13. Water Well
14. Air Compressor

15. Vertical Compressed Gas Storage
16. Diesel / Generator
17. Diesel Generator
18. Electrical Control Panel
19. Underground Utility outlet
20. Transformer Panel Box Walls
21. Control Panel
22. Washroom/Shower
23. Compression Unit
24. Compression Unit
25. Sump/Sump Pump
26. 8" Product Pipeline Array and Filter
27. Air Compressor Pressure Tanks and Filter

28. Engine
29. Control Panel
30. Engine
31. Control Panel
32. Ventilation Units



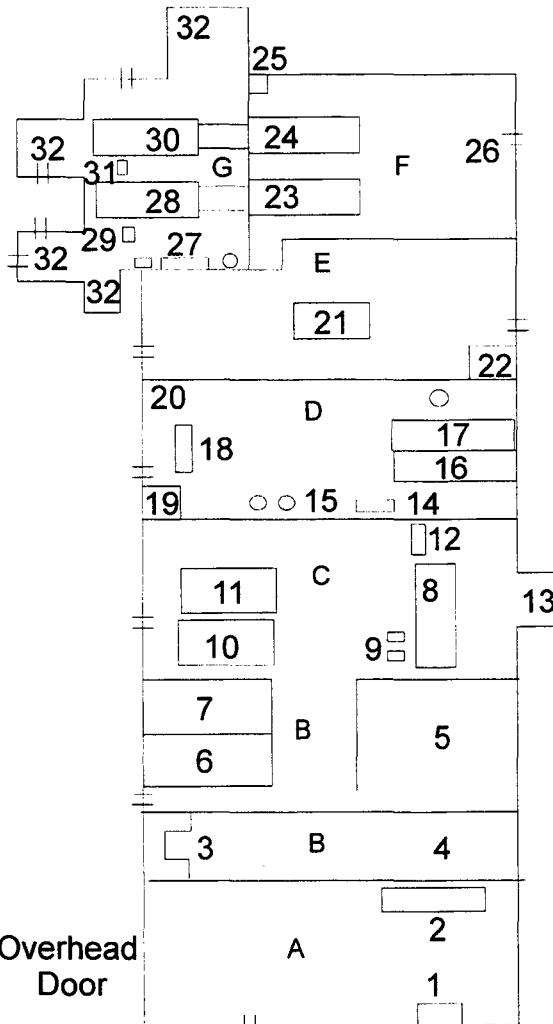
Berm

List Of Rooms

- A. Mechanical Room / Shop
- B. Store Room
- C. Boiler Room
- D. Generator Room
- E. Office / Control Room
- F. Compressor Room
- G. Engine Room

Utility Pit

Out Building



Product Pump

Day Tank

Shed

UST Fuel Tanks

Gate



Perimeter Fence

Not To Scale

Table 1 Buildings and Building Components

Building Name	Drawing Identifier	Construction Components	Hazardous Components	General Dimensions	Currently Hazardous Entry	Condition
Main	A through G 1 through 32	<ul style="list-style-type: none"> • Steel truss on concrete pad foundation. Steel siding (inside and out). • Fibreglass insulation • Underground concrete conduits to location of former housing area • Bored well 	Asbestos pipe insulation, lead paint on walls. Hazardous items housed inside building.	28'x145'	No current problem. Do not disturb asbestos or lead paint.	Excellent. No significant vandalism
Shed	West of Main Building	Steel building Concrete pad Subsurface entry to utilities	None apparent	8'x8'	No. Utility pit enclosed by trap door	Door loose
Housing	East of Main Building	5 former trailer units gone, except for underground utility pits. One 15'x 30' building remaining. Elevated wood frame construction	Transite pipe (asbestos) in utility pits.	Gone 15'x30'	Utility pits pose a hazard to falling No	Good
Power Poles	East of Main Building	6 poles, with one equipped with a breaker box and dry transformer.	None apparent	Conventional	No	Good

Table 2: Identified Equipment Items

Item	Location(s)	Identifiers	General Condition
Compressors	Generator room		Excellent, although mechanically unknown. Unit properly mothballed
	Engine room	Model 87-00 SN 8561 Tank SN CRNC1746-5847361209	Excellent, although mechanically unknown. Unit properly mothballed
Pumps	Compressor Room 2 identical pump units, powered by engines from engine room	<p>SN 35811 Type 4x6x9.5 MSD-4Stg Min Stc pressure 20 psi Max discharge pressure 1460 psi Dif pressure 413 psimin fluid pressure 84deg F Max temp 90deg F Jet fluid JP\$ Sp-J6 0823 RPM 3250-BHP 255 Gas type 20-765 RPM 3375 BHP 237 Gasoline 115-1450730 RPM 3395 BHP 238 Diesel Fuel Dfa 0-873 3150 BHP 237</p> <p>SN 35910 Type 4x6x9.5 MSD-4Stg Min Stc pressure 20 psi Max discharge pressure 1460 psi Dif pressure 413 psimin fluid pressure 84deg F Max temp 90deg F Jet fluid JPS Sp-J6 0823 RPM 3250-BHP 255 Gas type 20-765 RPM 3375 BHP 237 Gasoline 115-1450730 RPM 3395 BHP 238 Diesel Fuel Dfa 0-873 3150 BHP 237</p>	Excellent, although mechanically unknown. Units properly mothballed

Overhead Heaters	<p>Mechanical room/shop</p> <ul style="list-style-type: none"> • 2 heaters <p>Store room</p> <ul style="list-style-type: none"> • 1 heater <p>Boiler room</p> <ul style="list-style-type: none"> • 1 overhead make-up air unit • 1 heat exchanger <p>Generator room</p> <ul style="list-style-type: none"> • 1 overhead heater <p>Compressor room</p> <ul style="list-style-type: none"> • 1 overhead heater <p>Engine room</p> <ul style="list-style-type: none"> • 1 overhead heater 		All heater units appear to be in excellent, stored condition, although mechanically unknown. Units were all properly mothballed.
Water Tanks	<p>Boiler room</p> <ul style="list-style-type: none"> • 2100 gallon (10,000 litre) steel tank, elevated on stand. Complete with metering device for injecting chemical additives. • 50 gallon steel high pressure tank, complete with three pumps. • 		Both in excellent condition, although coated with lead paint. Units properly mothballed by draining, and are re-usable. Covers remain off, but are present.
Generators	<p>Generator room</p> <ul style="list-style-type: none"> • S5 Cat engine and generator 	<p>SN 1162110031 TYPE PRKT RPM 900 KVA 75 CYCLE 60 VOLTS 480 Amps-90 PHASE 3 PF-08 FRAME S23 IB 62 SRGE 40 FIELD 50 OVERLOAD 25% RATED VOLTS 62.5 CAT SA57310DV SERIES C</p>	Excellent, although mechanically unknown. Units properly mothballed

	<ul style="list-style-type: none"> S6 Cat engine and generator 	SN 262110032 TYPE PRKT RPM 900 KVA 75 CYCLE 60 VOLTS 480 Amps-90 PHASE 3 PF-08 FRAME S23 IB 62 SRGE 40 FIELD 50 OVERLOAD 25% RATED VOLTS 62.5 CAT SN 31133391 SERIES C	
Walk-in Freezer	Store room Freon compressor A In boiler room	TYPE 757CZ12 MODEL 4110 SN C62 70639-624 BM# 23257-1 MODEL # JR150H	Excellent, although mechanically unknown. Units properly mothballed
Walk-in Fridge	Store room Freon compressor B In boiler room	SN 64921-62g Bm #23154-1 MODEL Fe300L+ CONLD 7S7CZ12 MODEL 4110 SNB62	Excellent, although mechanically unknown. Units properly mothballed
Fuel storage tanks	Outside, within unlined berm: <ul style="list-style-type: none"> 500 barrel tank 1400 barrel tank 10 barrel heated day tank 2 underground fuel tanks	Apparently empty. Apparently empty. Apparently empty. 4" product (gasoline) 4" product (gasoline)	Good condition. No interior inspection on either tank. Good condition. No interior inspection Unknown condition
Diesel Power Units	Engine Room 2 identical engines c/w radiator heat exchangers and gear drives for compressor pumps. Skid mount units	Bighan Company SN 172 RPM 726 RPM out 3860 Horsepower 267 Bighan Company SN 173 RPM 726 RPM out 3860	Excellent, although mechanically unknown. Units properly mothballed

		Horsepower 267	
Pressure Vessels	<p>Boiler room</p> <ul style="list-style-type: none"> Hydro-pneumatic tank <p>Generator Room</p> <ul style="list-style-type: none"> 2 Vertical pressure tanks <p>Engine Room</p> <ul style="list-style-type: none"> Compressor tank 	<p>TYPE HORIZ N-St7 SN C3246 SIZE 60X15-7 Dp 101 D type 100 RD A1414.2 St - 5t6 Sn A28SC JE-70 Ht-.375 Hn-A285C SF-4 Hm-150 SR-No Volume - I990 US Weight-3950 Date F- 6,29,62 Drawing No. SISJ3-0-0</p> <p>A33332</p> <p>A33333</p> <p>SN CRNC1746- S847361209</p>	<p>Excellent, although mechanically unknown. Units drained of contents and disconnected.</p> <p>Good.</p>
Lighting	All rooms, fluorescent fixtures		All ballasts removed by DIAND personnel
Overhead Doors	Mechanical room 1 overhead door, dimensions 20'x20'		Good condition
Boilers	<p>Boiler room</p> <ul style="list-style-type: none"> Boiler #1 Boiler #2 	<p>Size E536-30LS WP 15 SN E53630LS32122436 VOLTS 440 CY 60 PH 3</p> <p>Size E536-30LS WP 15 SN E53630LS32032436 VOLTS 440 CY 60 PH 3</p>	<p>Excellent, although mechanically unknown. Units properly mothballed</p>
Pressure Guages	Boiler, Generator,	Various. Estimated 20	Unknown, although

	Compressor Rooms	guages	units intact.
Pipeline Components	Compressor Room.	Drained	Excellent, although mechanically unknown. Units properly mothballed
Transformers	Generator room Transformer 1 Transformer 2	SN 399277 TYPE Dt3 STYLE F48A28t30H2 30KBA SN 399276 TYPE Dt3 STYLE F48A28t30H2 30KBA	Excellent, although mechanically unknown. Units properly mothballed
Control Panel Units	Generator room • Panel #1 Control room • Panel #2 Engine room • Panels 3 and 4	No serial numbers on units. Multiple guages on each panel, each with serial numbers	Excellent, although mechanically unknown. Units properly mothballed
Other	Boiler room • Water metering device	Model 52-90-V17 SN 20341 Cap 3.0 Pressure 12.5	
Heat Exchanger	Boiler room	Unit # T3HORIZ SN 29S122 IORRIVENT	Excellent, although mechanically unknown. Unit properly mothballed

Table 3: Identified Hazardous Materials

Material	Description	Location	Quantity	Current Risk
Asbestos	8" Transite pipe used in pits under residence trailer units joined to main building underground	Utility pits under 6 former residence locations	60'	Current low risk. High risk if cut with power tools.
	Asbestos elbows on heating pipes. Representative sample 98-07 from joint in boiler room contains Chrysotile (5%)	All rooms	100 joints	Current low risk. High risk if disturbed.
	Boiler Sample 98-10 Chrysotile (80)	Boiler main steam pipe, exterior coating	4' of 10" pipe	Current low risk. High risk if disturbed.
	Sample 98-11 Amosite (50)	Exhaust stack Generator units	30' of 10" pipe	Current moderate risk, friable asbestos. High risk if disturbed.
	Sample 98-12 Chrysotile (70)	Pipe elbow above hot water tank	Included above	Current moderate risk, friable asbestos. High risk if disturbed.
	Asbestos gaskets	On boiler doors in Boiler room On engine radiators in engine room	4	Low, unless disturbed Not friable. Low risk.
Glycol	Exposed to atmosphere for some time	Fluid maintenance tank, mechanical room.	Less than 4 gallons	Low
Oil/lubricants	Fluid maintenance container, Mechanical Room/shop	Fluid maintenance tank, mechanical room.	Less than 10 gallons	Low
Residual Fuel	UST's	None detected	Less than 20 gallons	None

Mercury	Beads of mercury in switch gear	Guages, control room	1 guage	Current low risk. High risk if released
PCB's	N/A	N/A		N/A
Lead Based Paint	Sample 98-04 4560 mg/kg	Paint chip on floor adjacent to freezer		Moderate
	Sample 98-05 2610 mg/kg	Water tank		Current low risk. Low risk if disturbed.
	Sample 98-09 2850 mg/kg	Floor paint under Boiler unit 1		Current low risk. Low risk if disturbed.
	Sample 98-13 7030 mg/kg	Green metal paint on engine components, engine room		Current low risk. High risk if disturbed.
	Sample 98-14 5830 mg/kg	Wall paint in office/control room		Current low risk. High risk if disturbed.
Solvents		Fluid maintenance tank, mechanical room.	Less than 2 gallons	Low
Pressure Vessels		Boiler room Compressor room	No product	Nil
Random Chemicals (small quantities in containers)	Medicine chest Paint	Office/Control Room Mechanical Room/Shop	Less than 1 litre	Low

5.0 Conclusions

The following conclusions have been drawn from the inventory results.

State of the Structures

The structures at the Station which pose some risk include the following:

- The six utility pits which formerly serviced trailer housing units. These pits have wooden covers but should be removed or filled in.
- Two underground storage tanks remain on site and should be removed and properly disposed of.
- There are no lights within any of the structures, and general entry should continue to be restricted until this is changed. A qualified electrician should thoroughly examine the electrical system before power is restored.
- There is no asbestos on boiler insulation (98-11), Boiler ceramics (98-06), brick (98-02), building insulation, most pipe wrap except for joints (98-08), wallboard interior.
- Asbestos has been confirmed on pipe joints, exhaust stacks, boiler main steam lines, gaskets, transite pipe. All asbestos should be removed before any equipment is taken from the Station or modifications to the heating system are made.
- There is lead paint on the floors and walls of each structure. Loose paint chips should be removed and disposed of as hazardous waste by a qualified contractor before the buildings are reused for any purpose.
- All lines and sumps were drained of product when the Station was mothballed.

Presence of Hazardous Materials and Pressure Vessels

- Previous reports indicate that there are no PCB's in the Station (previous report). Light ballasts have been removed by DIAND personnel.
- Glycol has been removed from all lines.
- There are no pressure vessels still charged.
- Only small quantities (estimated less than 50 gallons) of fuel, oil, and other liquid maintenance products remain at the station.
- There is no current asbestos hazard due to asbestos items in friable condition. This will change immediately with attempts to remove asbestos containing items.
- Asbestos is contained in the Station as part of the steam heating system (100 knuckles), transite pipe (trailer pits) and within movable equipment items currently housed in the Main Building. Asbestos removal procedures applied by a qualified asbestos contractor must be undertaken to ensure that other equipment and building components are not contaminated by asbestos fibres during removal.
- The presence of lead paint has been confirmed throughout the Station on floor/wall paint and on equipment housed within. Lead removal procedures applied by a qualified contractor must be undertaken to ensure that other equipment and building components are not contaminated by lead dust during removal. The most feasible option is to remove loose paint chips and dispose of

this material as hazardous waste. Paint that is currently in good shape can be encapsulated with acceptable paint or by wallboard.

- Lead paint on engines, steel piping, etc. can be safely be removed from the Main Building without concern during removal of these items. Whoever accepts these removed items must be warned of the lead paint concern.

Appendix A
System Flow Diagram

Appendix B
Laboratory Results

Style 1 BC, DB
 Style 2 DJ, HJ.

E807214 CONT...
 PAGE 4

ENVIRO-TEST CHEMICAL ANALYSIS REPORT

LAB ID	SAMPLE ID	TEST DESCRIPTION	RESULT	D.L.	UNITS	EXTRACTED	ANALYZED	BY
E807214-25	98-33	Res Walls DJ						
Sample Type: BULK								
E807214-26	98-04	floor outside freezer BC	4580	10	mg/kg		07/09/98	GC
Sample Type: BULK								
E807214-27	98-14	Wall Paint office BC	5830	10	mg/kg		07/09/98	GC
Sample Type: BULK								
E807214-28	98-21	Compressor Room DJ	53800	10	mg/kg		07/09/98	GC
Sample Type: BULK								
E807214-29	98-46	Grey siding HJ	43300	10	mg/kg		07/09/98	GC
Sample Type: BULK								
E807214-30	98-47	Water tank HJ	4110	10	mg/kg		07/09/98	GC
Sample Type: BULK								
E807214-31	98-13	Metal Paint Eng Room BC	7030	10	mg/kg		07/09/98	GC
Sample Type: BULK								
E807214-32	98-09	floor Boiler Room BC	2850	10	mg/kg		07/09/98	GC
Sample Type: BULK								
E807214-33	98-42	Green Eng. Block HJ	60800	10	mg/kg		07/09/98	GC
Sample Type: BULK								
E807214-34	98-43	Light Green office HJ	8260	10	mg/kg		07/09/98	GC
Sample Type: BULK								
E807214-35	98-44	White o Office HJ	4050	10	mg/kg		07/09/98	GC
Sample Type: BULK								
E807214-36	98-48	Apt Paint (inside) HJ	1880	10	mg/kg		07/09/98	GC
Sample Type: BULK								
E807214-37	98-05	Water tank BC	2610	10	mg/kg		07/09/98	GC
Sample Type: BULK								
E807214-38	98-45	Multi-Comp Room HJ	43500	10	mg/kg		07/09/98	GC
Sample Type: BULK								
E807214-39	98-41	HJ						
Sample Type: SOIL								
		TVH and TEH in Soil % Moisture	2.3	0	%		07/08/98	MD

E807214 Cont...
PAGE 2**ENVIRO-TEST CHEMICAL ANALYSIS REPORT****TEST: Bulk Asbestos Content****METHOD:NIOSH 9002**

SAMPLE DESCRIPTION	LAB-ID	Asbestos Type	Percent * Asbestos	Other Fibres Present
98-11 Gen Stack Insul.	E807214-01	AMOSITE	50	NONE
98-30 Res Boiler	E807214-02	AMOSITE*	50	MMVF
98-40 Haines Door	E807214-03	CHRYSOTILE	40	MMVF
98-12 Asb above HWT	E807214-04	CHRYSOTILE	70	MMVF
98-25 Pipe wrap	E807214-05	N.D.	<1	ORG, SYN
98-51 Boiler outside Insulation	E807214-06	AMOSITE	50	MMVF, OTHERS*
98-26 office ceiling	E807214-07	N.D.	<1	ORG
98-24 pipe wrap	E807214-08	N.D.	<1	ORG
98-27 Insulation Quanset	E807214-09	N.D.	<1	MMVF
98-29 I-beam filler	E807214-10	TREMOLITE	1	SYN
98-28 Ins. machine shop	E807214-11	N.D.	<1	MMVF
98-23 floor tile	E807214-12	CHRYSOTILE	5	SYN
98-20 Product PL Insul	E807214-13	N.D.	<1	NONE
98-50 Apt Boiler door	E807214-14	CHRYSOTILE	10	MMVF, ORG
98-49 Pipe Ins Apt Boiler Room	E807214-15	CHRYSOTILE	70	MMVF
98-08 Res tile Pipe Ins	E807214-16	N.D.	<1	MMVF
98-32 Res Tile	E807214-17	CHRYSOTILE	5	NONE
98-31 Res Basement	E807214-18	CHRYSOTILE**	40	MMVF
98-07 Elbow	E807214-19	CHRYSOTILE	5	MMVF
98-10 Boiler pipe #1	E807214-20	CHRYSOTILE	80	MMVF
98-06 Boiler ceramic	E807214-21	N.D.***	<1	MMVF
98-11 Boiler exterior Ins.	E807214-22	N.D.	<1	MMVF
98-02 Brick	E807214-23	N.D.	<1	NONE

N.D - None Detected.

* Percent asbestos determined by visual approximation.

MMVF-man-made vitreous fibres; Org. - organic fibres

Method: Polarized microscopy/dispersion staining.

THIS IS THE LAST PAGE OF THE ASBESTOS REPORT.



Mechanical Room/Shop. Over-head door, with concrete apron.



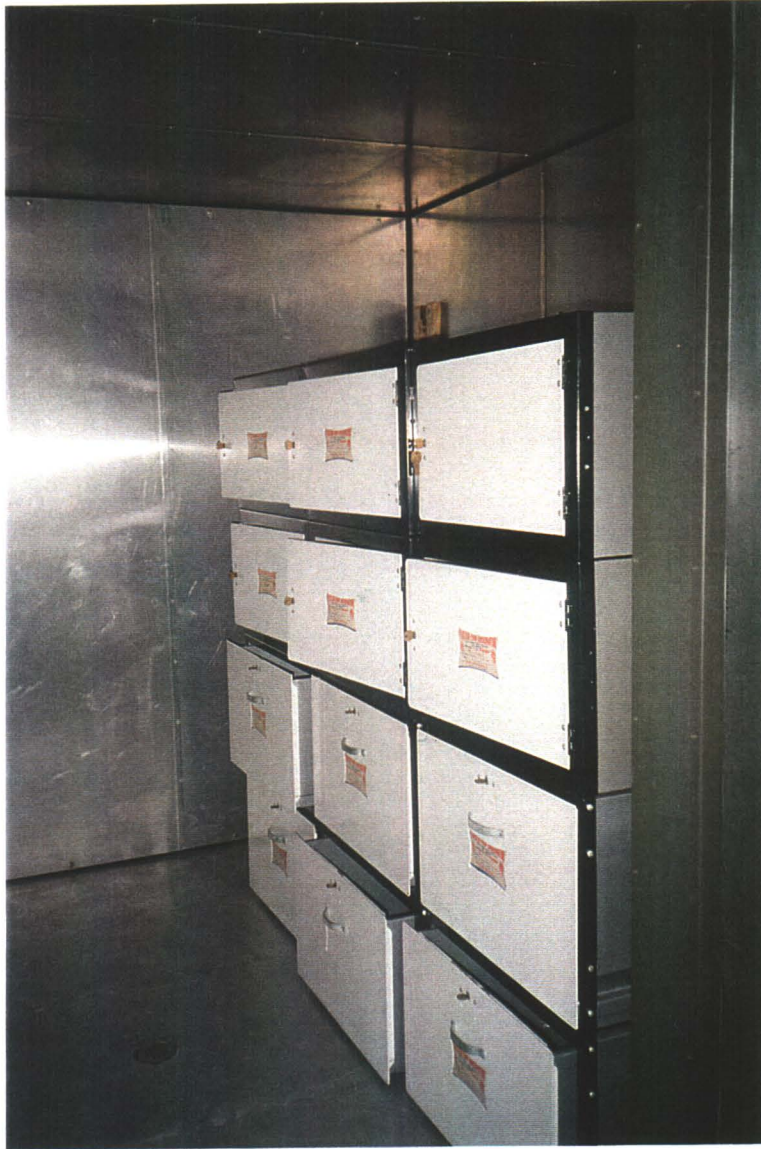
Mechanical Room/Shop. Maintenance fluid storage tank.
(Note: there are about four inches of product in each separate compartment)



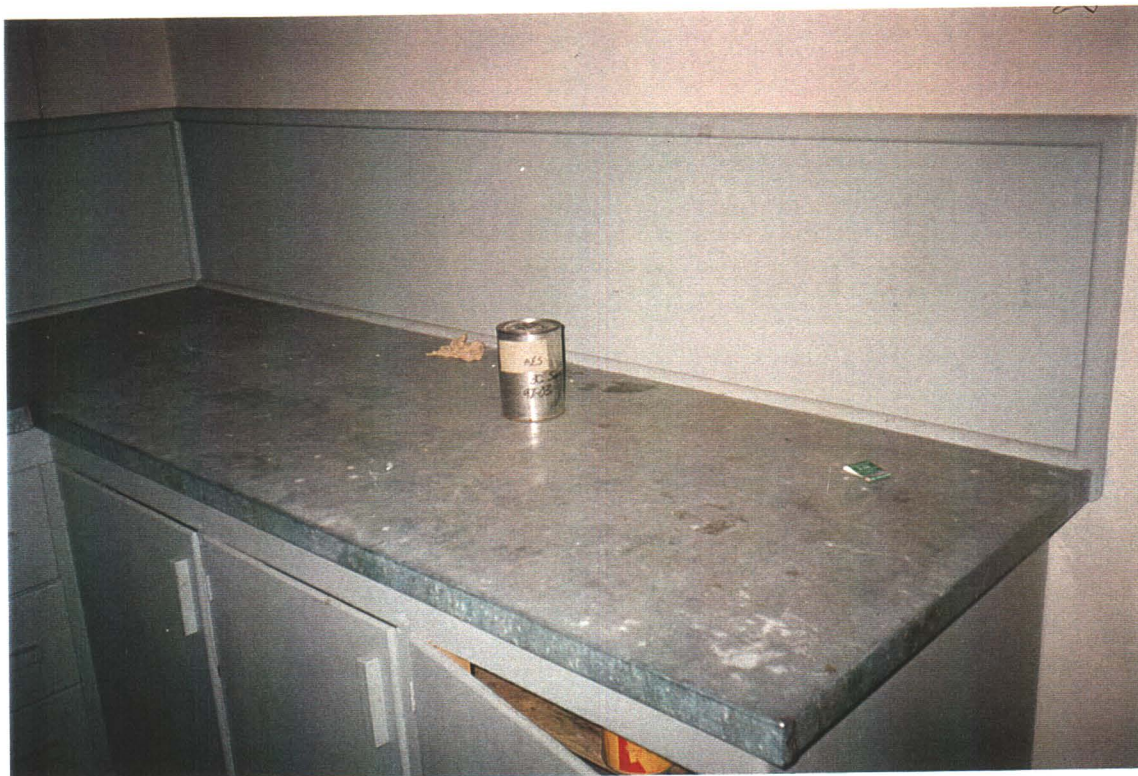
Mechanical Room/Shop. Shelf unit for storage of small items
No environmental concerns



Store Room. Side by side walk-in cooler and freezer units. These units are complete, and are likely charged with coolant



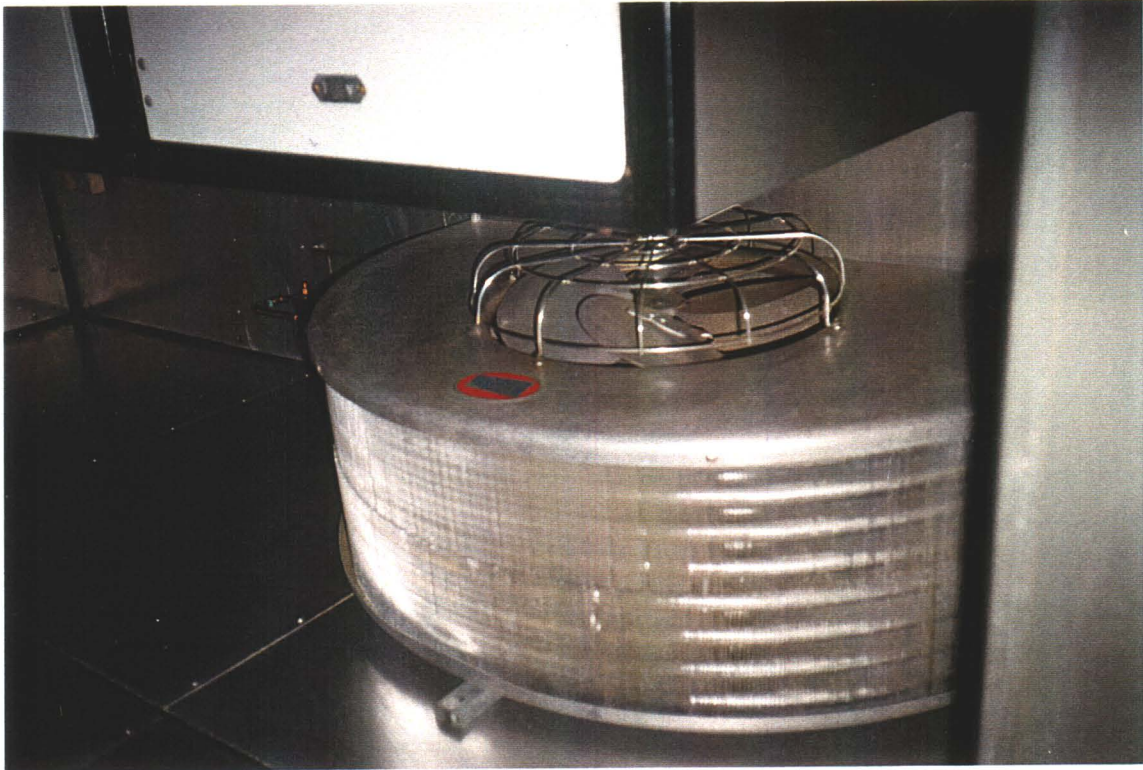
Store Room. Interior of cooler showing individual lockable compartments
(note: keys are in place)



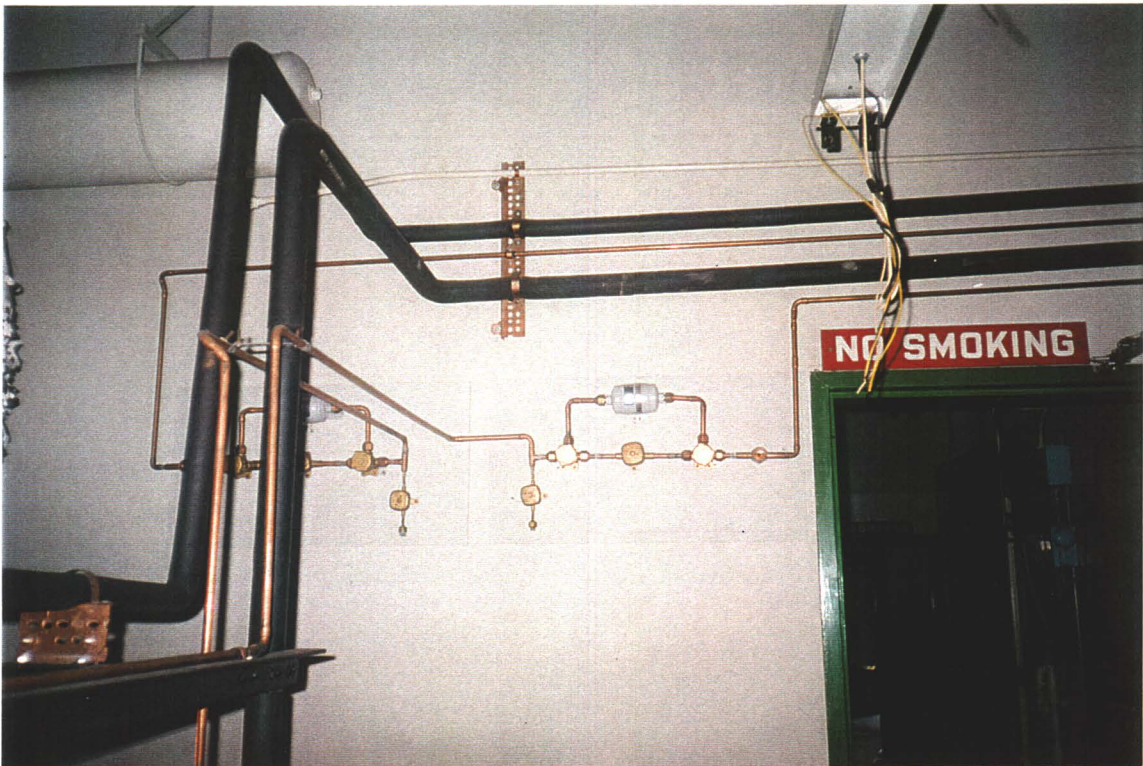
Store Room. Cabinet storage area.
(Un-labeled can of black powder identified as Decolourizing Carbon)



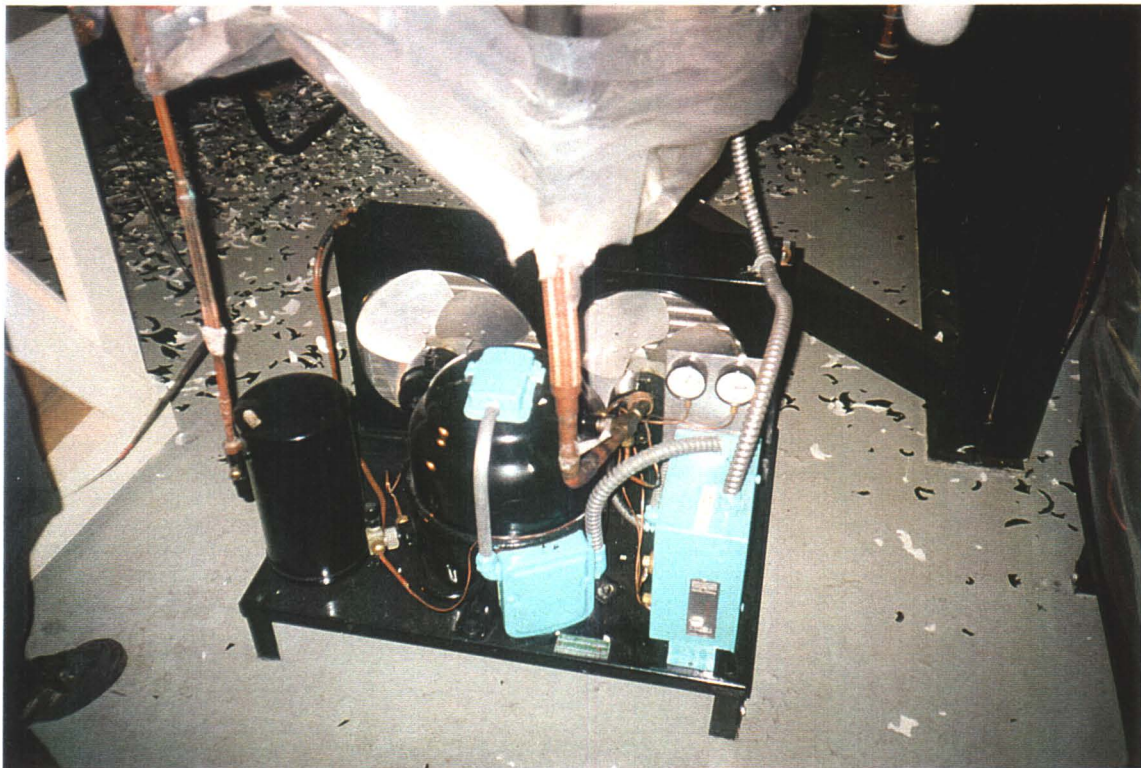
Store Room. Paint sample taken from floor in front of lockers.
(Identified as lead-based paint)



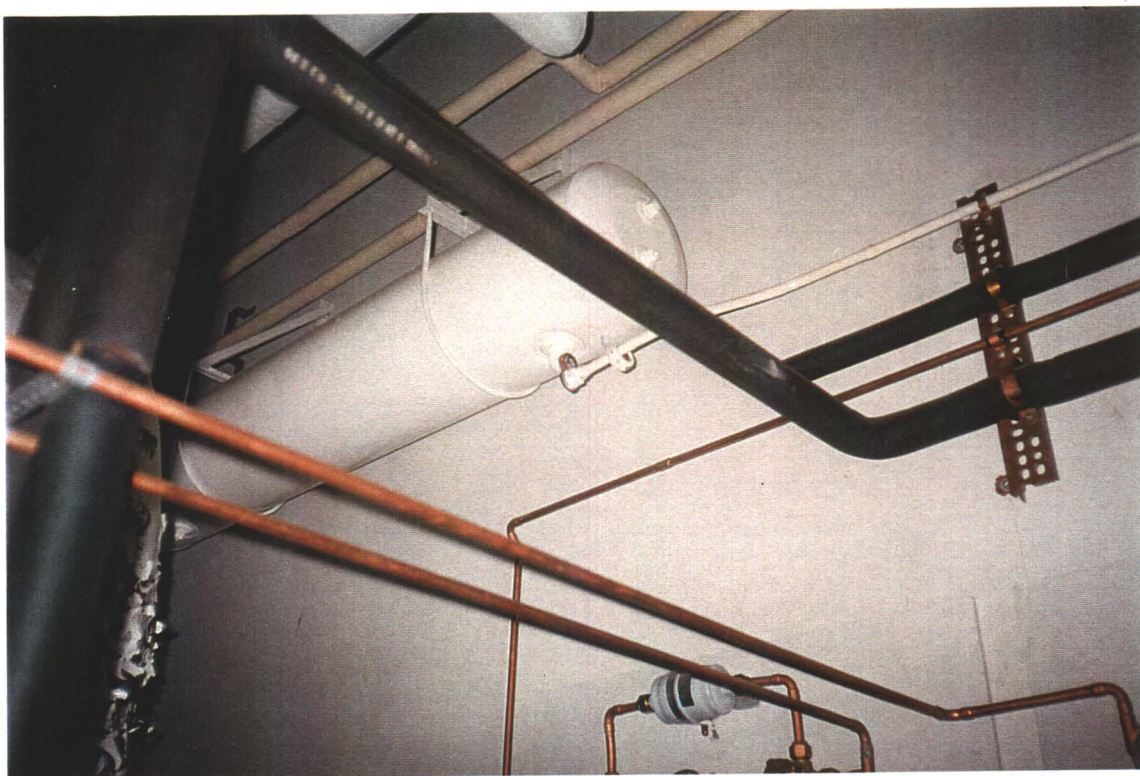
Store Room. Detail, interior of cooler, showing fan blower mechanism



Boiler Room. Wall-mount coolant piping devices for cold storage lockers
(These lines are likely charged)



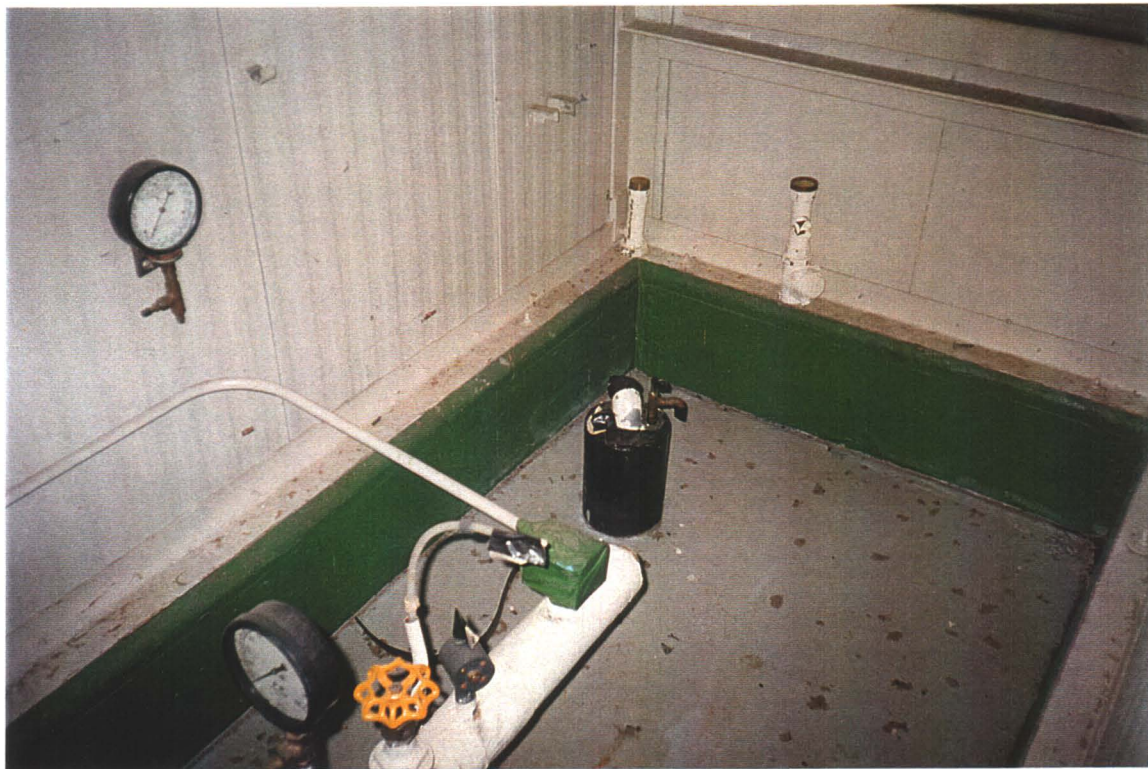
Boiler Room. One of two floor mount coolant compressor units for walk-in coolers
(These units are likely charged with coolant)



Boiler Room. Compressed air tank, wall mount.
(Note that discharge lines are disconnected and drained)



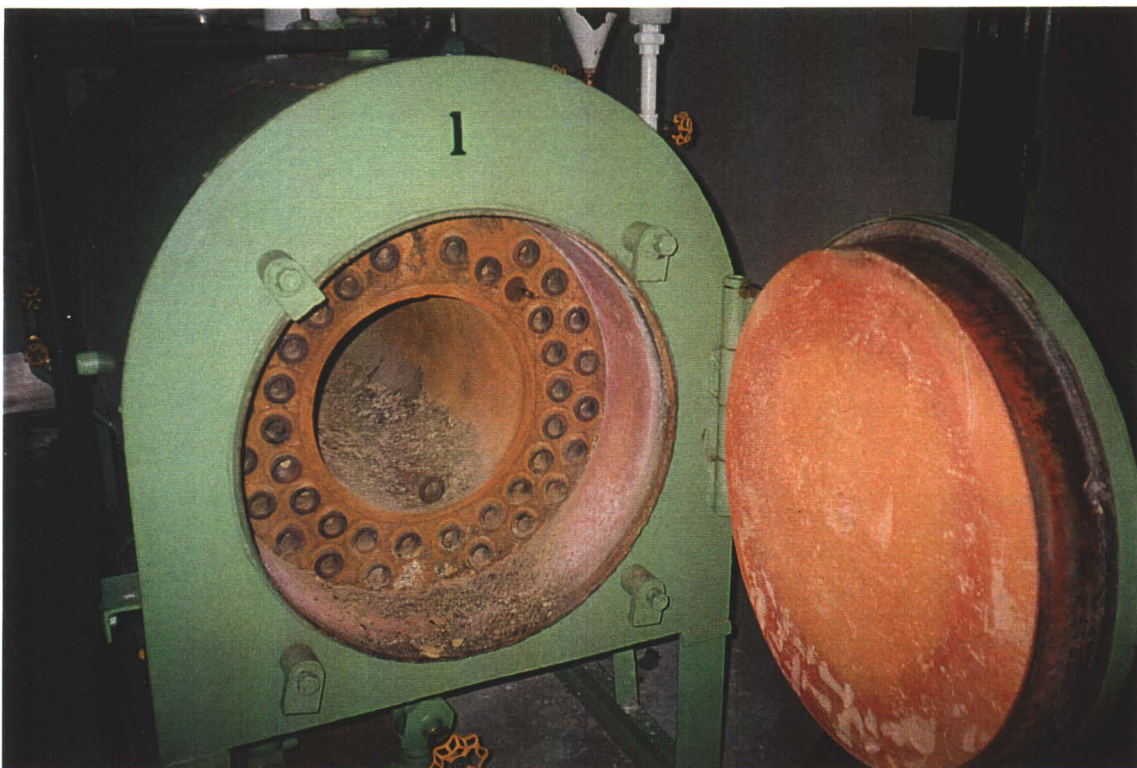
Boiler Room. Water storage tank, completely drained.
(note: lead based paint is flaking off)



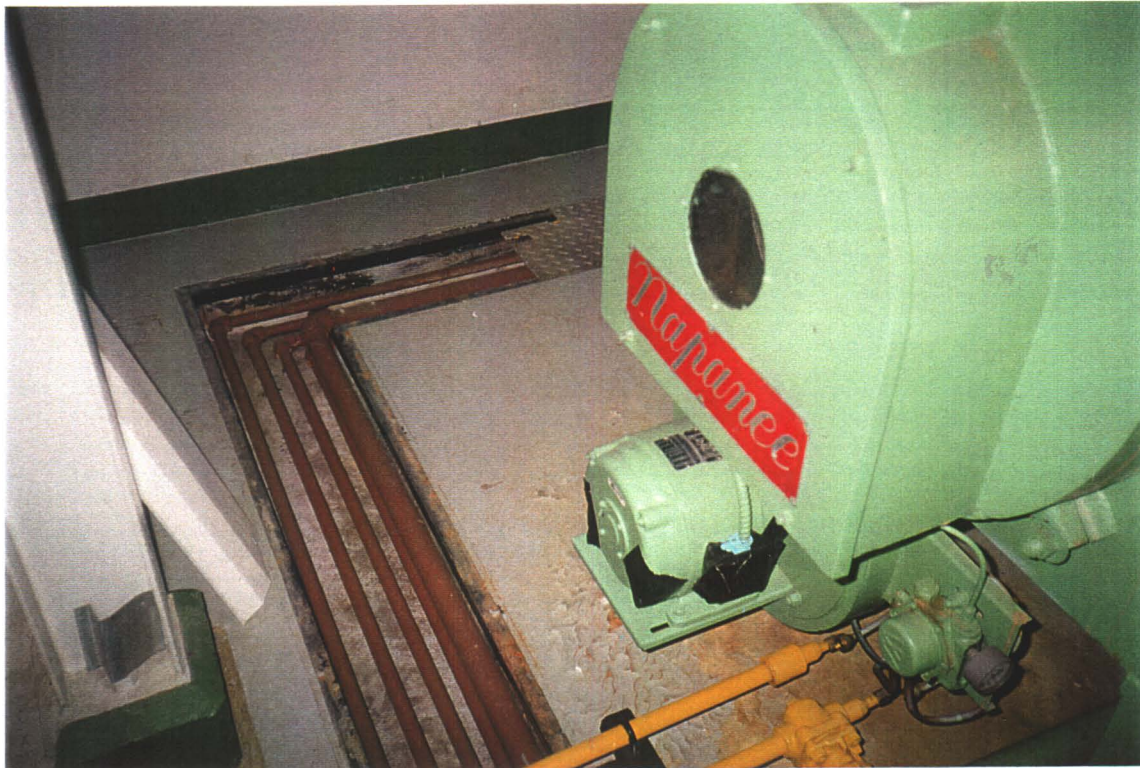
Boiler Room. Bored well inlet.



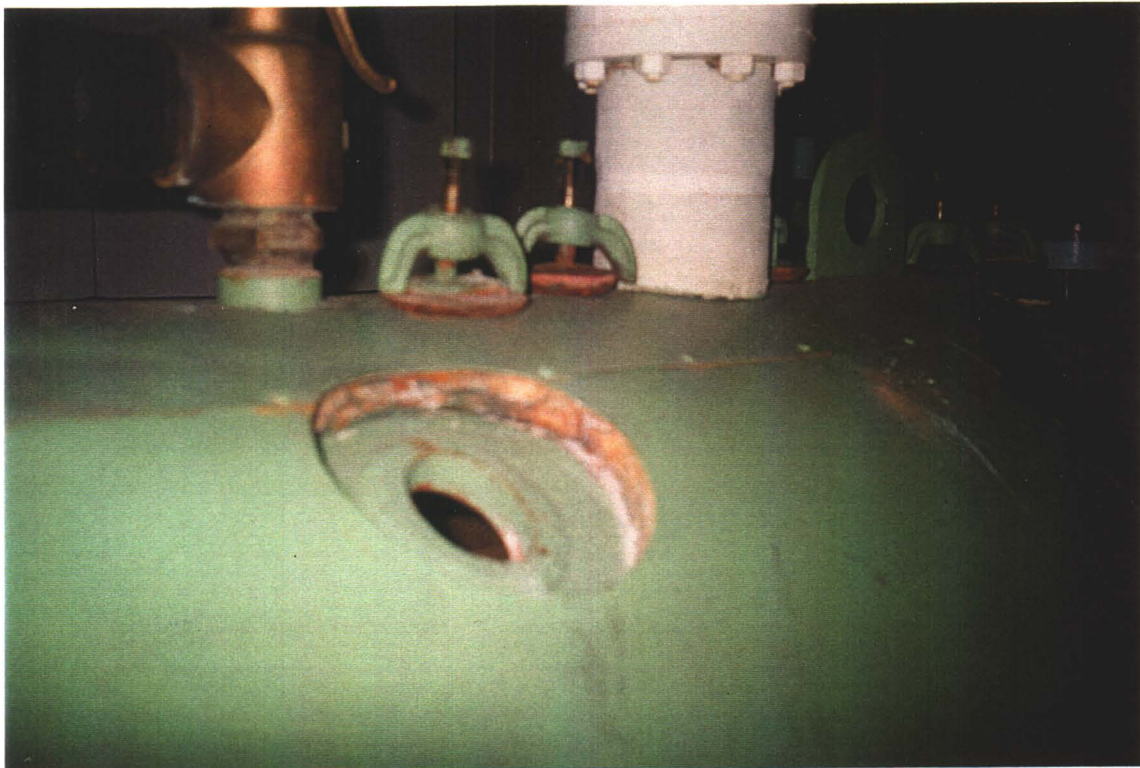
Boiler Room. Injection pump, for metering chemicals to water tank.



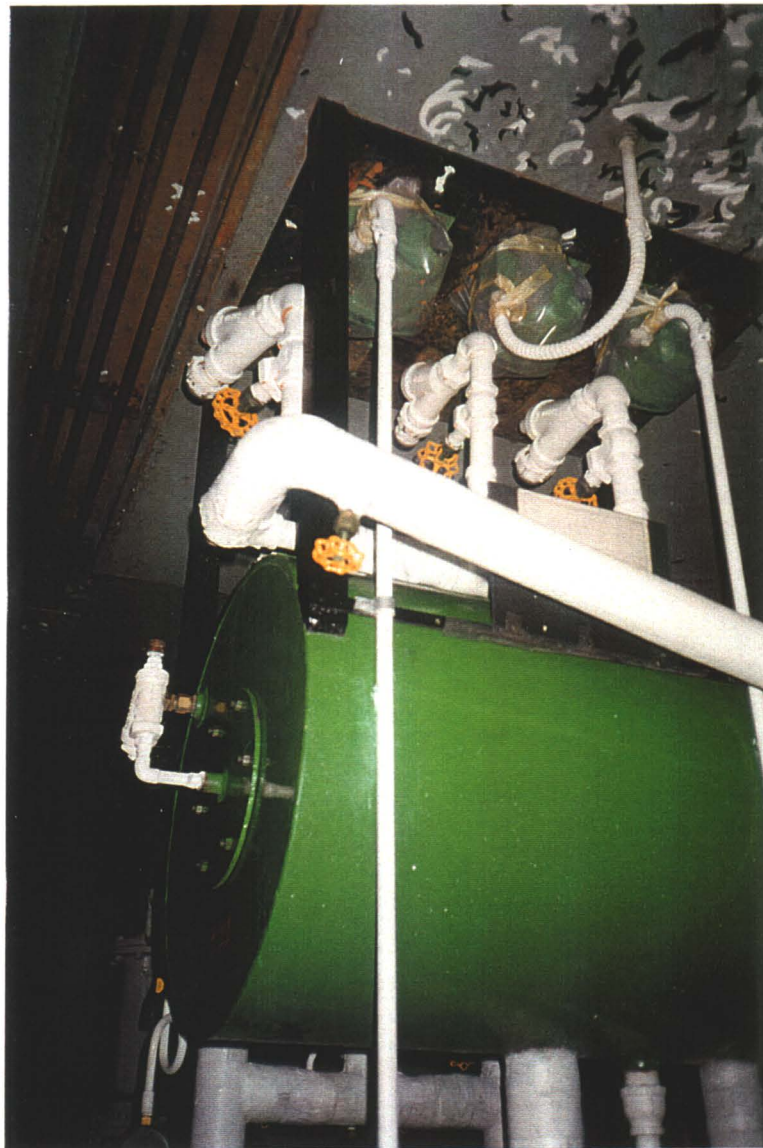
Boiler Room. Entry door, boiler # 1.
(note: asbestos gasket on door)



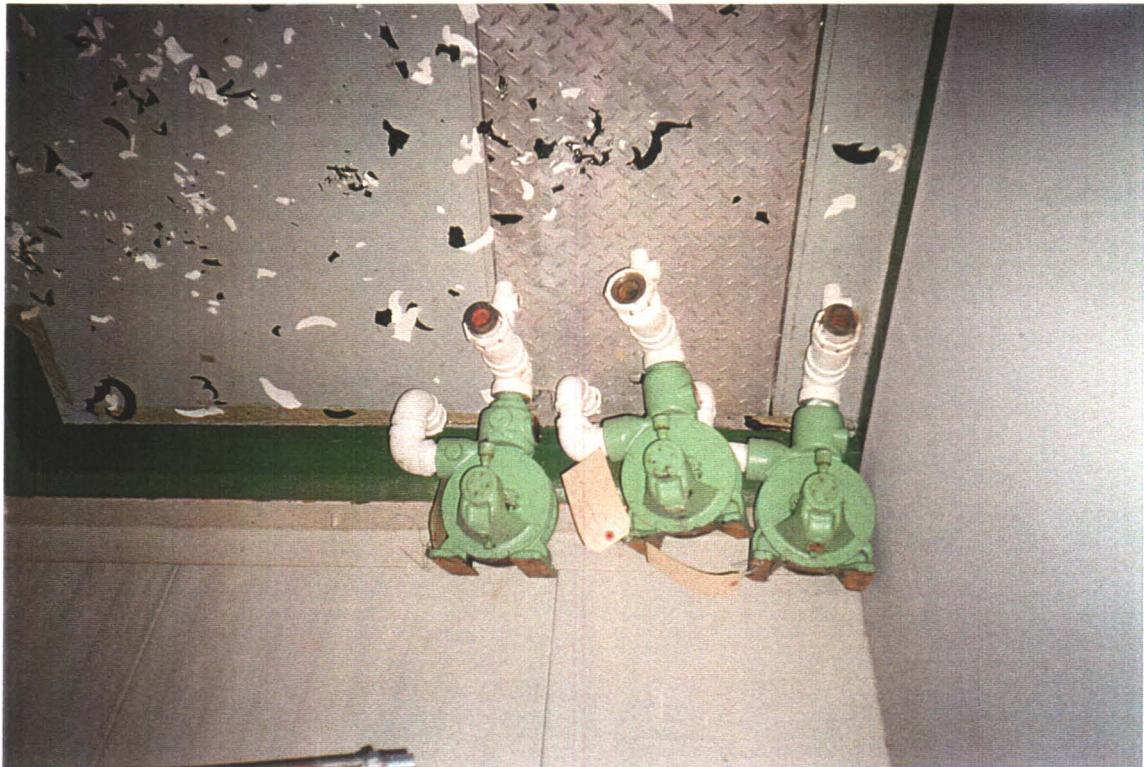
Boiler Room. Back end of boiler #2
(note: all water/glycol lines are disconnected and drained)



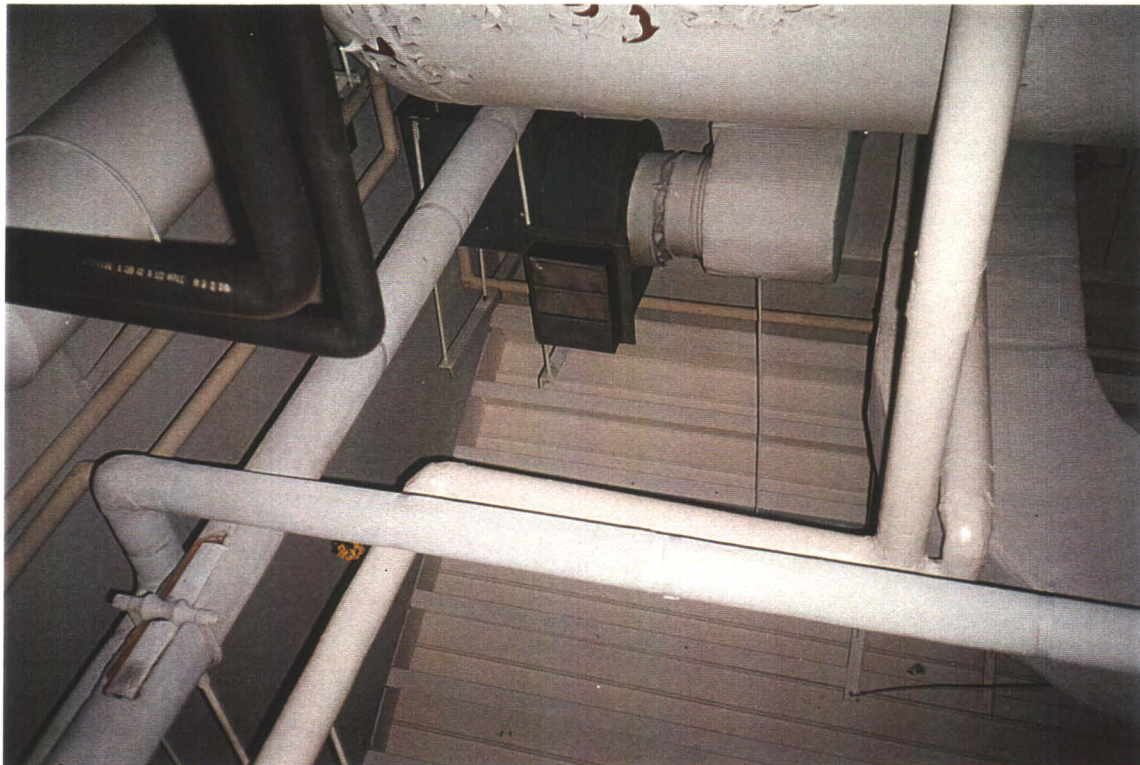
Boiler Room. Top of boiler #1.
(note: yellow-coloured boiler insulation confirmed to be man-made fibre, not asbestos)



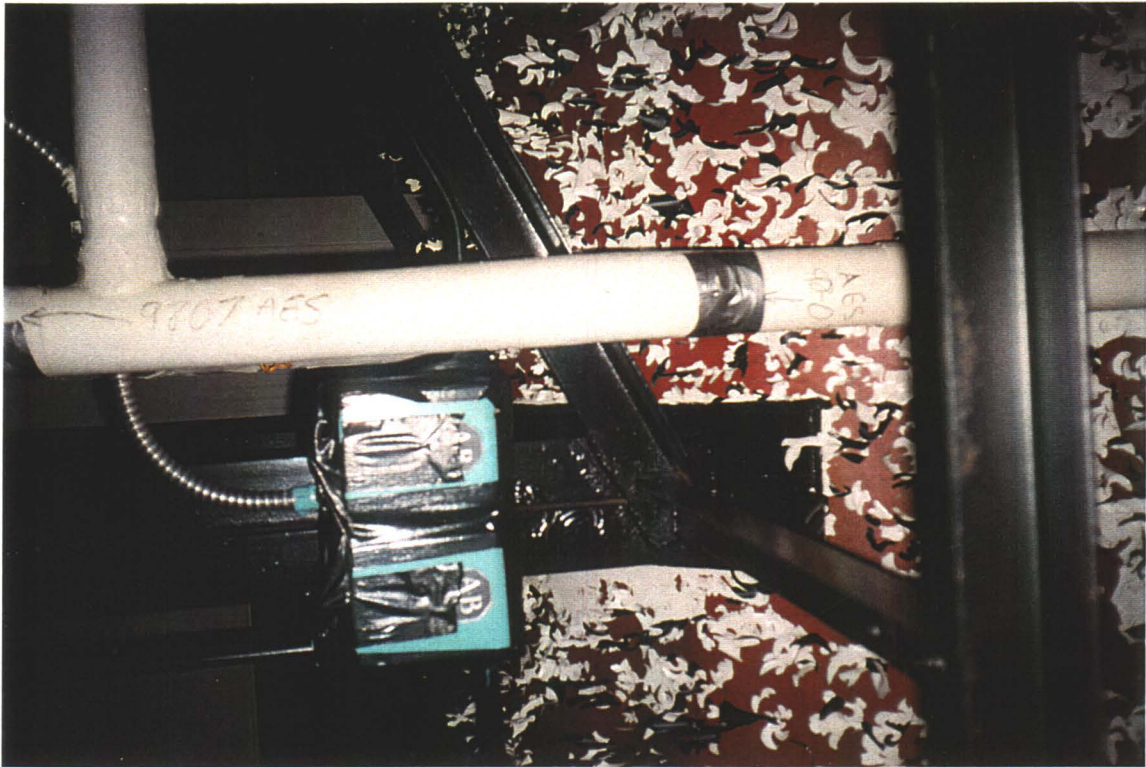
Boiler Room. Pressure vessel for hot water.
(note: asbestos knuckles, and pumps have been disconnected to drain lines)



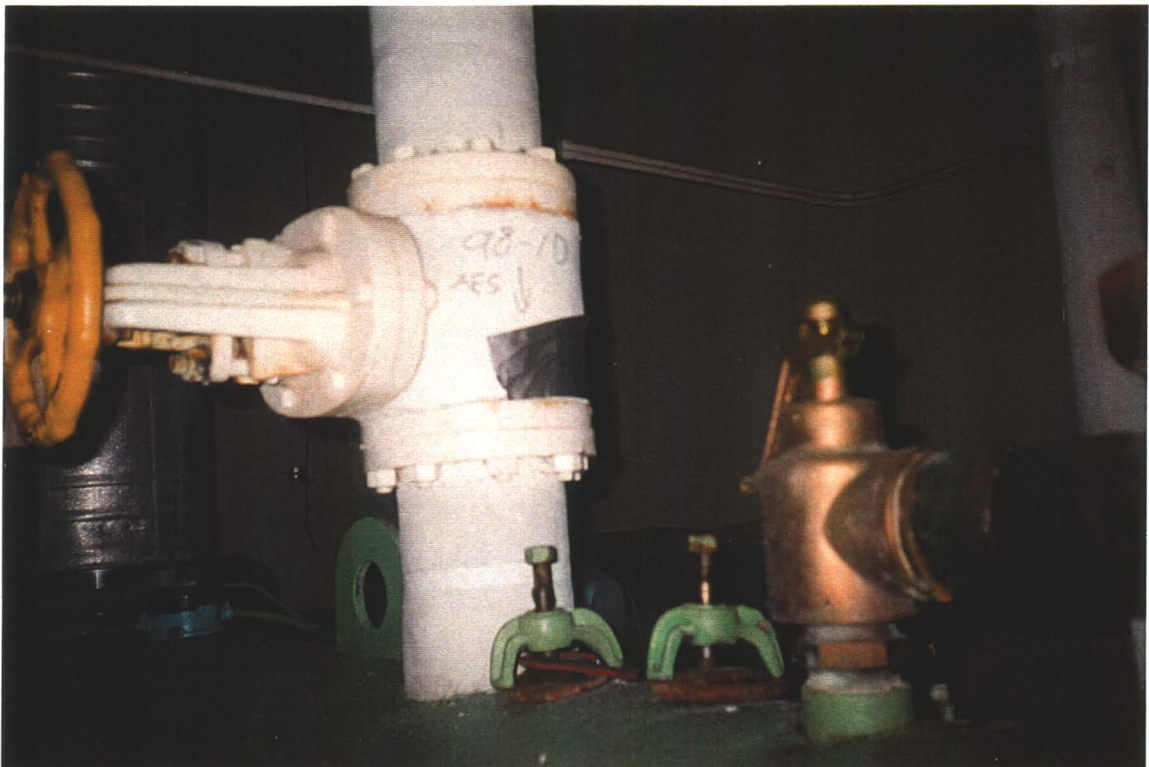
Boiler Room. Disconnected pumps from the pressure vessel.



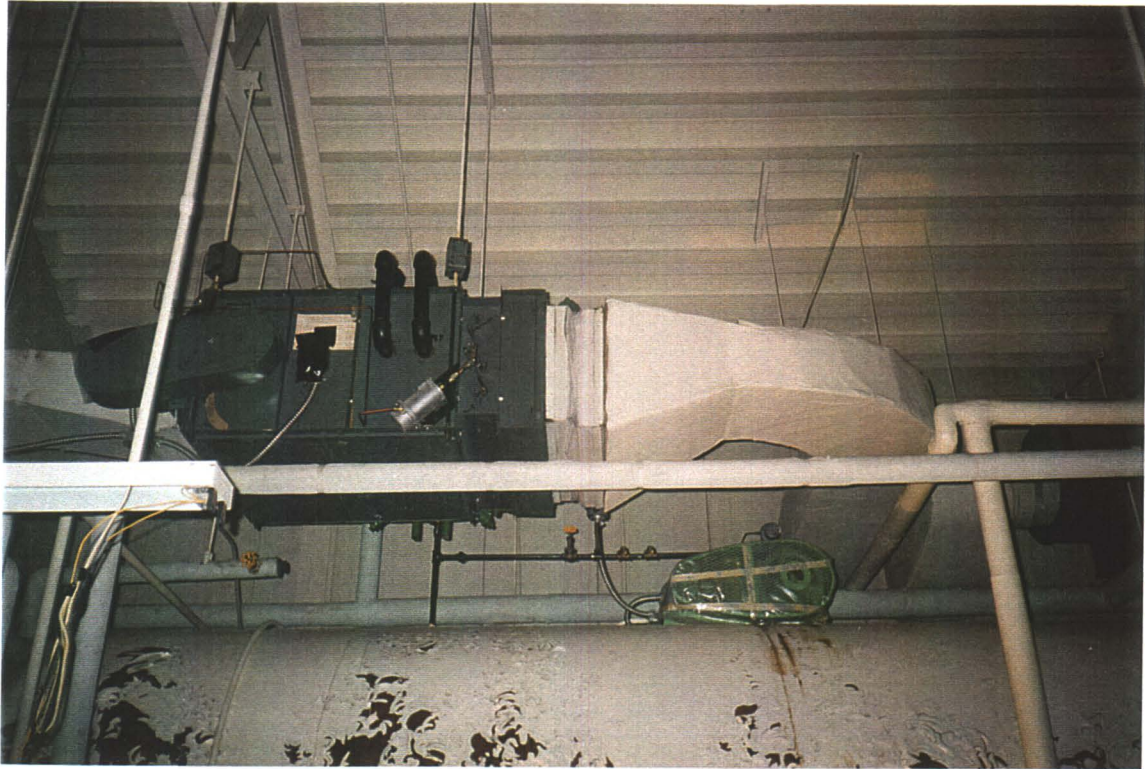
Boiler Room. Outside air intake unit above water storage tank.
(Note: insulated pipe has asbestos knuckles)



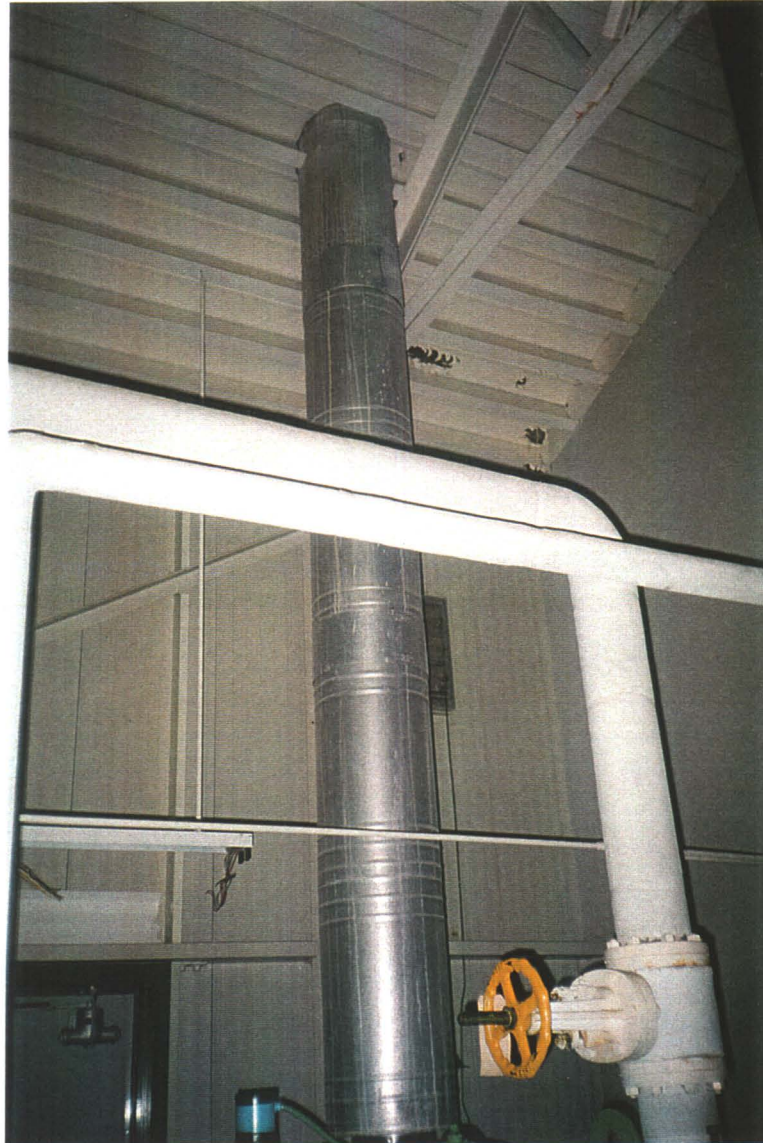
Boiler Room. Confirmed asbestos locations on insulated pipe joints.



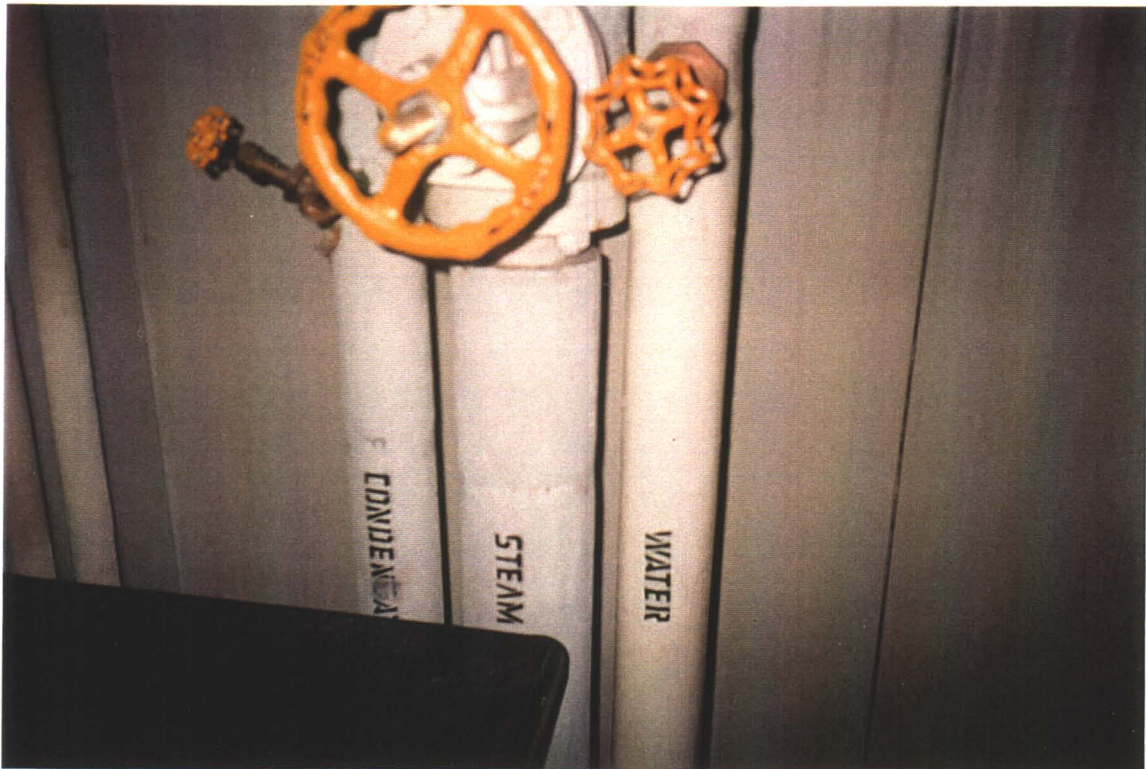
Boiler Room. Confirmed asbestos on main steam line joint.



Boiler Room. Overhead heat exchanger above water tank.



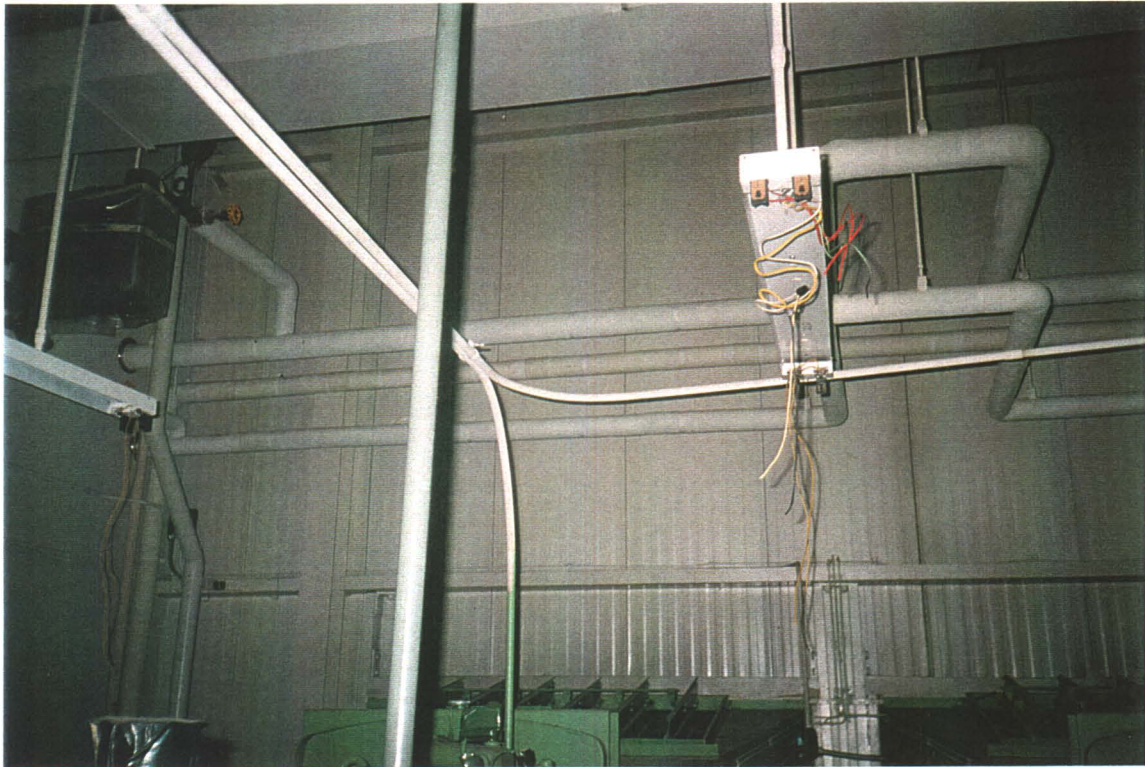
Boiler Room. Boiler Stack and main steam lines.
(Note: each contains asbestos)



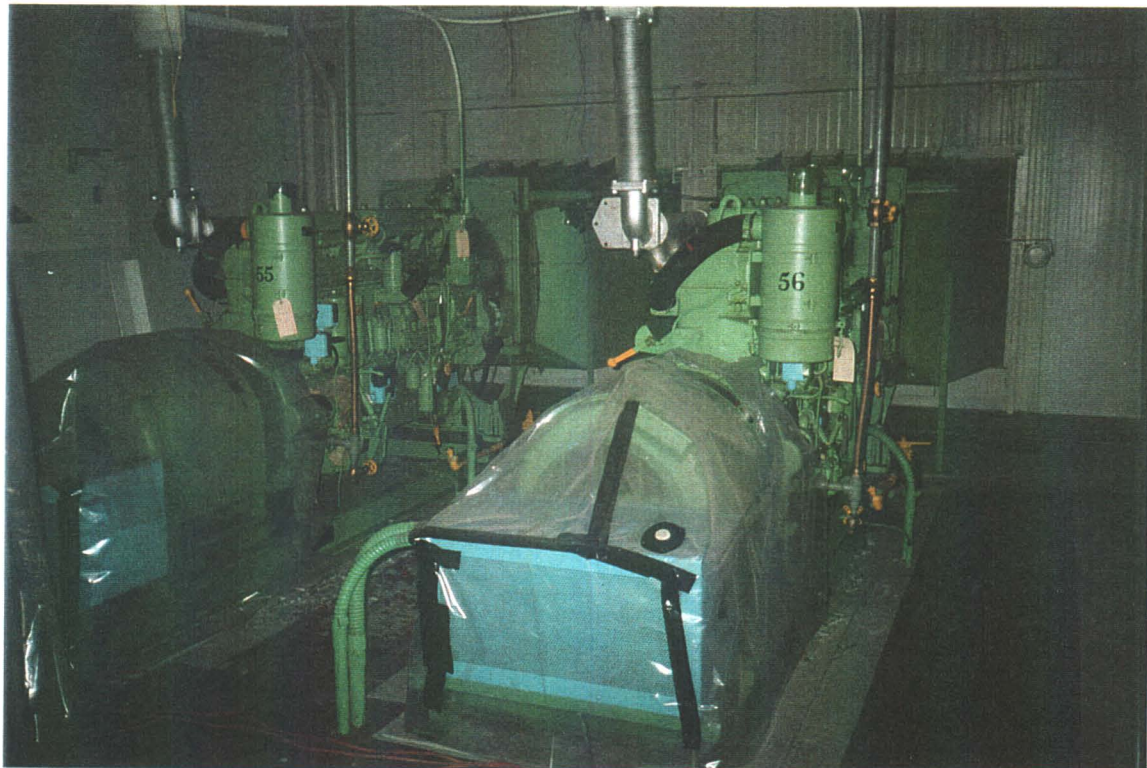
Boiler Room. Water and steam lines going to housing unit locations via underground concrete conduits to each location. Condensate return line returns back to boiler room.



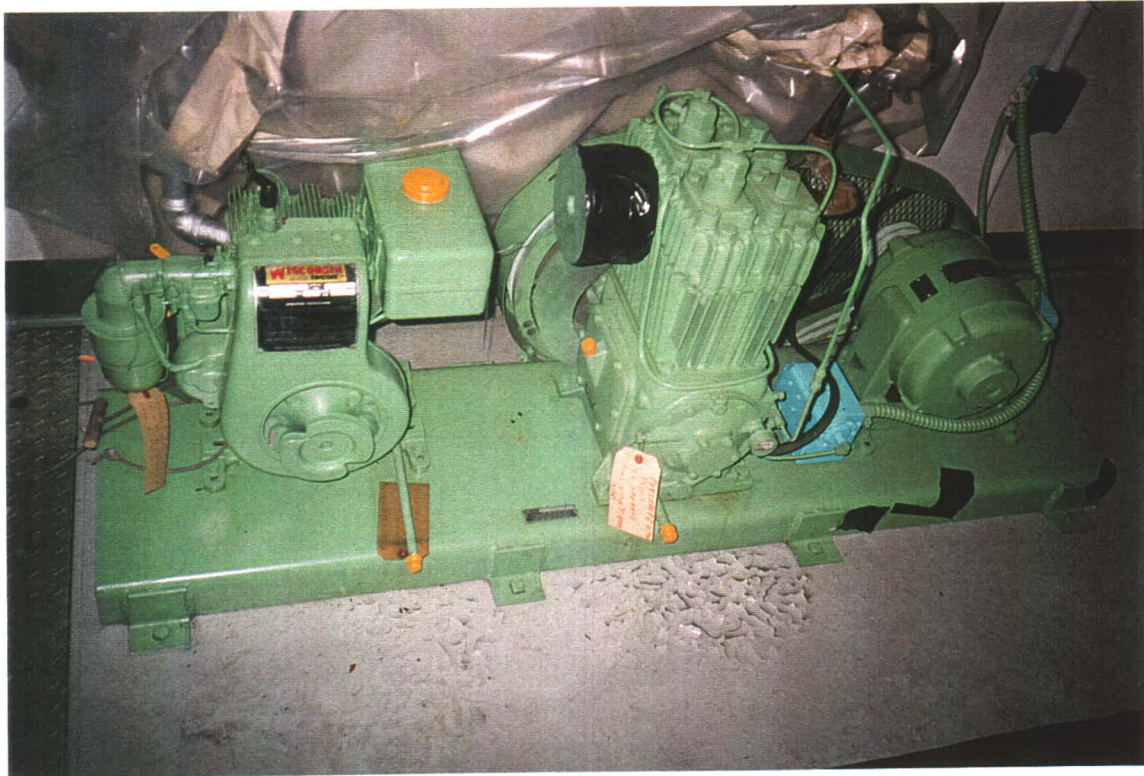
Boiler Room. Entry for underground conduit.



Generator Room. Detail of overhead steam lines and heater unit.



Generator Room. Generator Units 55 and 56, complete with diesel engines heat exchangers.



Generator Room. Compressor, one of two in building.
(Note: electric 3-phase motor with piston engine back-up.
This unit may have been used to assist with starting generator diesels)



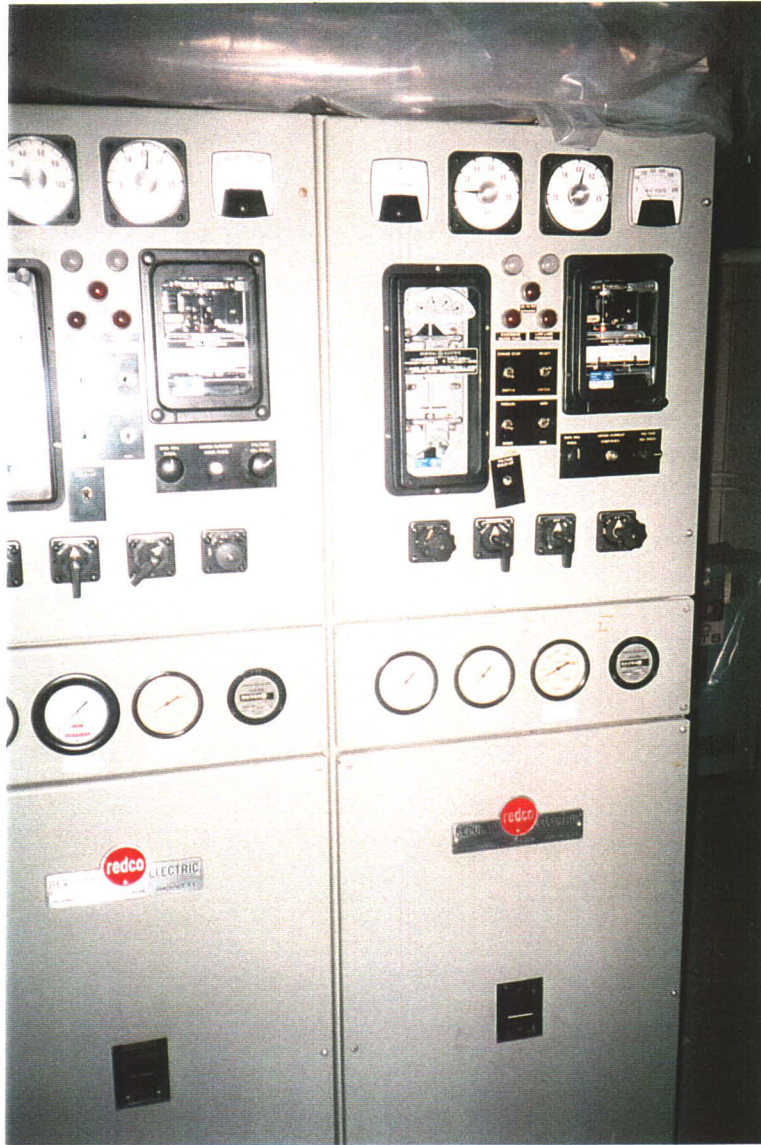
Generator Room. Sealed power panel boxes. Note 440 volts/3 phase power supply,
and dry transformers



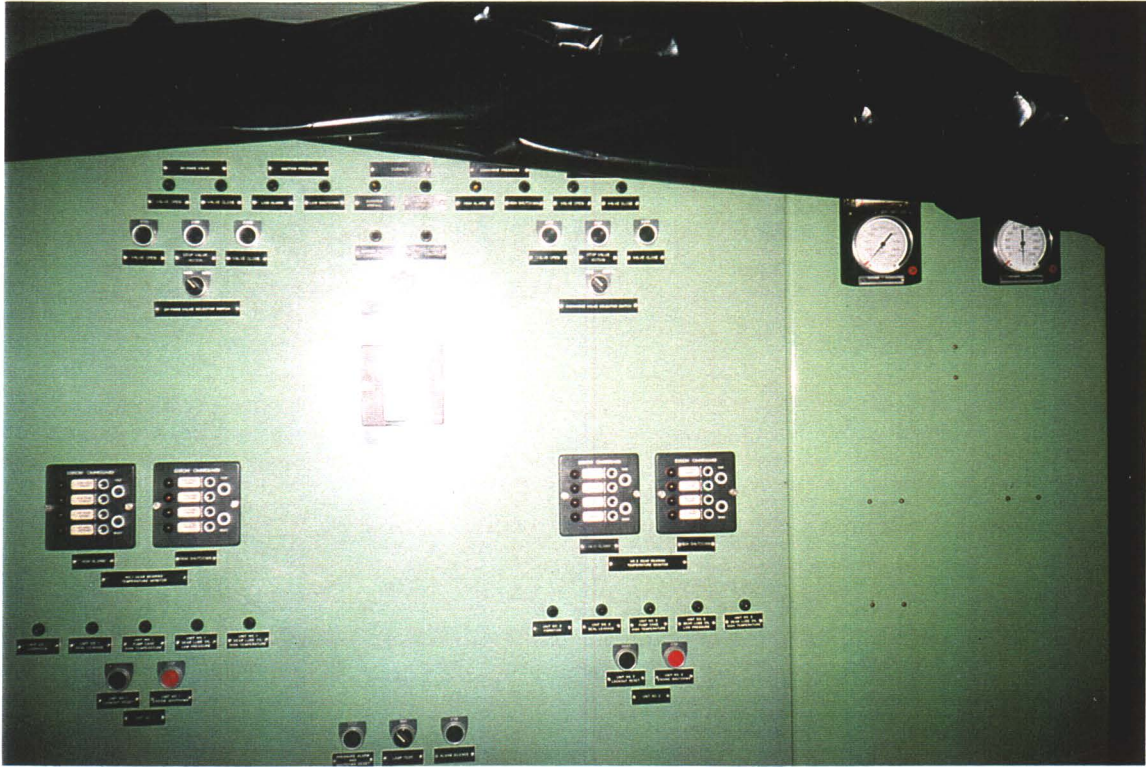
Generator Room. Generator stacks confirmed to contain friable asbestos (sample 98-12).



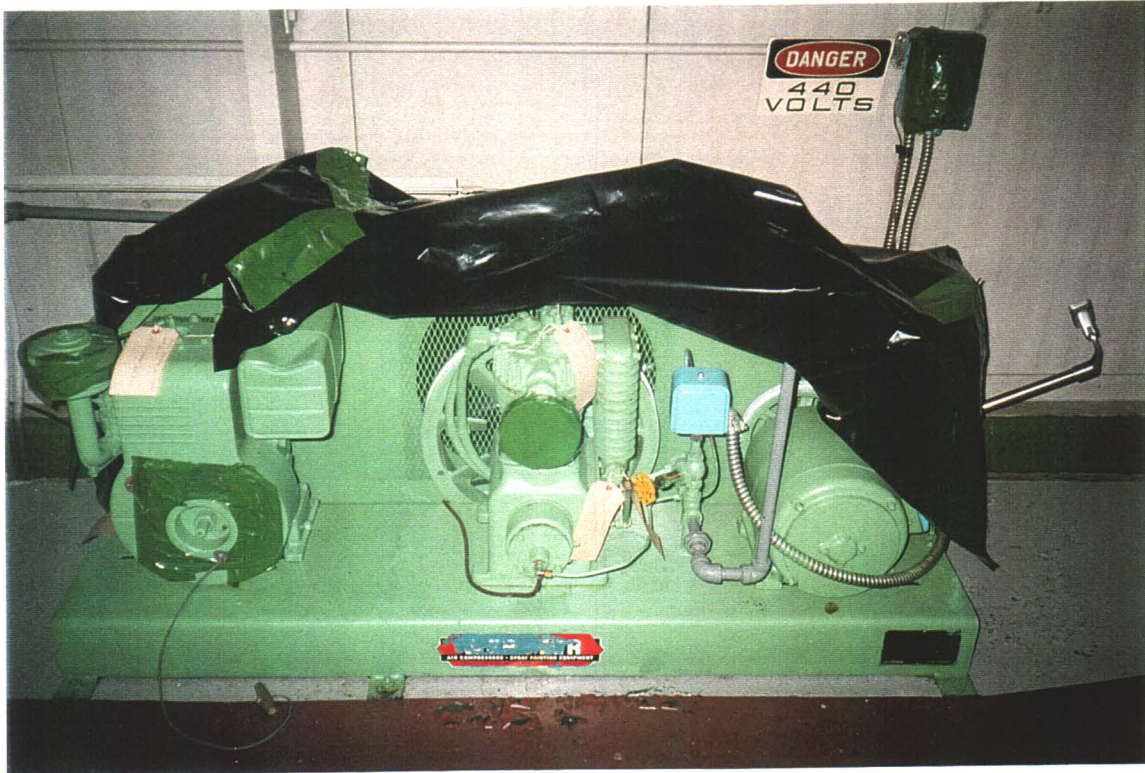
Generator Room. Compressed gas vertical storage tanks, currently drained.



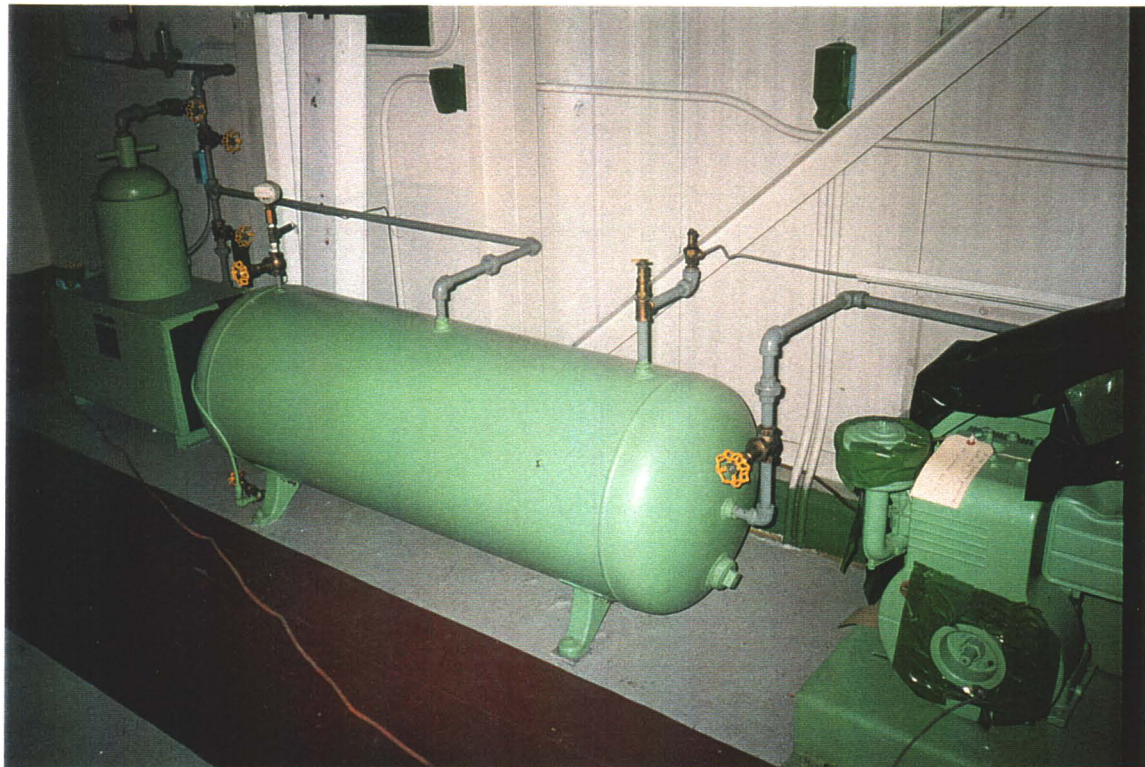
Compressor Room. Generator power control panel.



Office Room. Control Panel.
(note: contains at least one mercury activated switch)



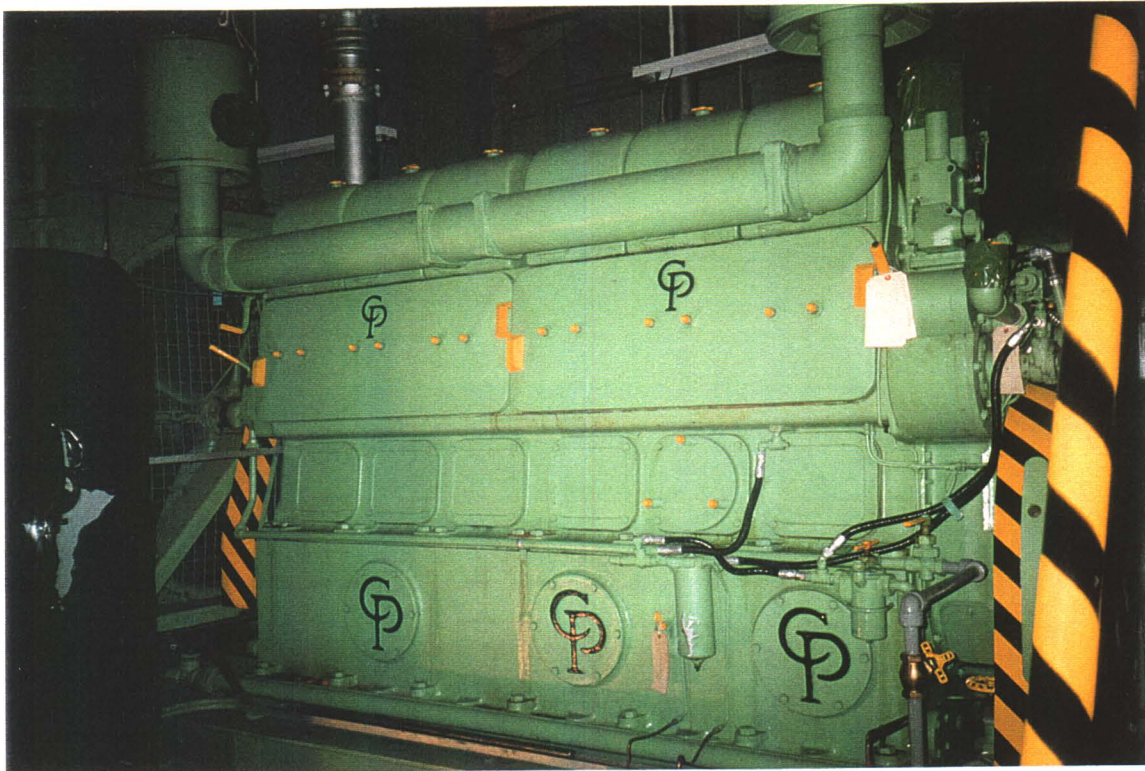
Engine Room. Compressor unit, complete with 440 3-phase power supply and back-up piston engine. A sister unit is in the Generator Room.



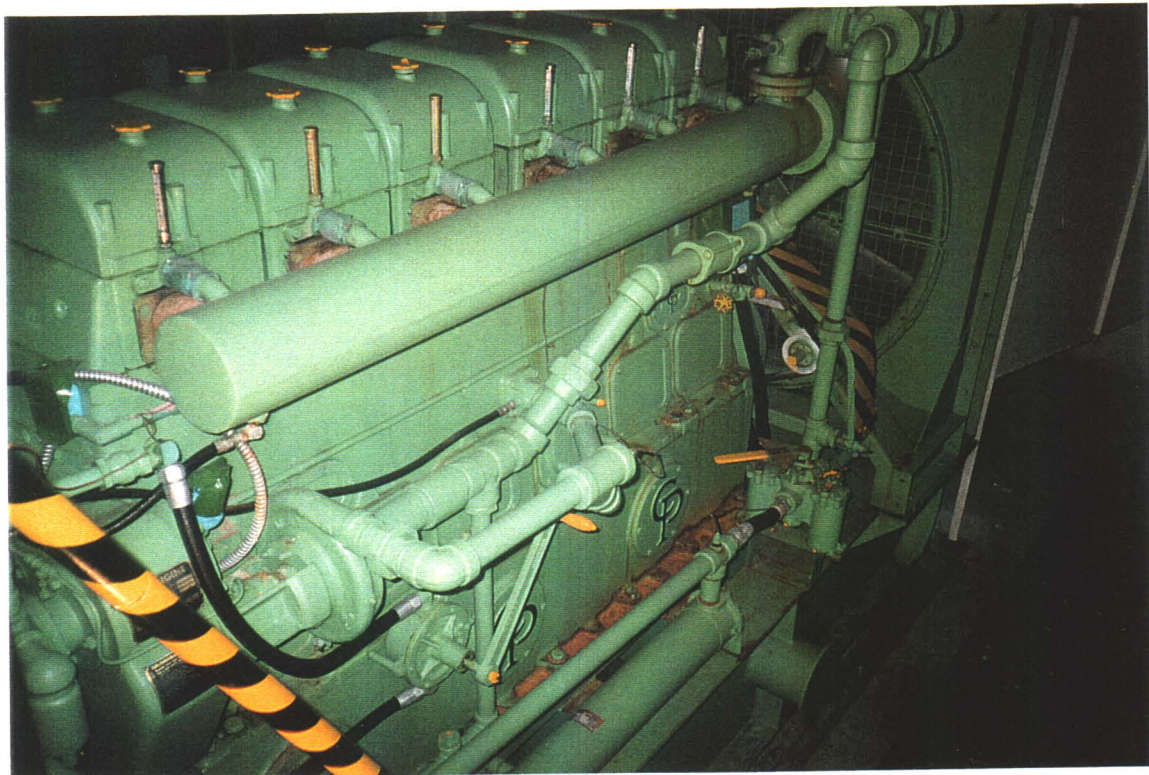
Engine Room. Compressor, horizontal tank, and air intake filter device.

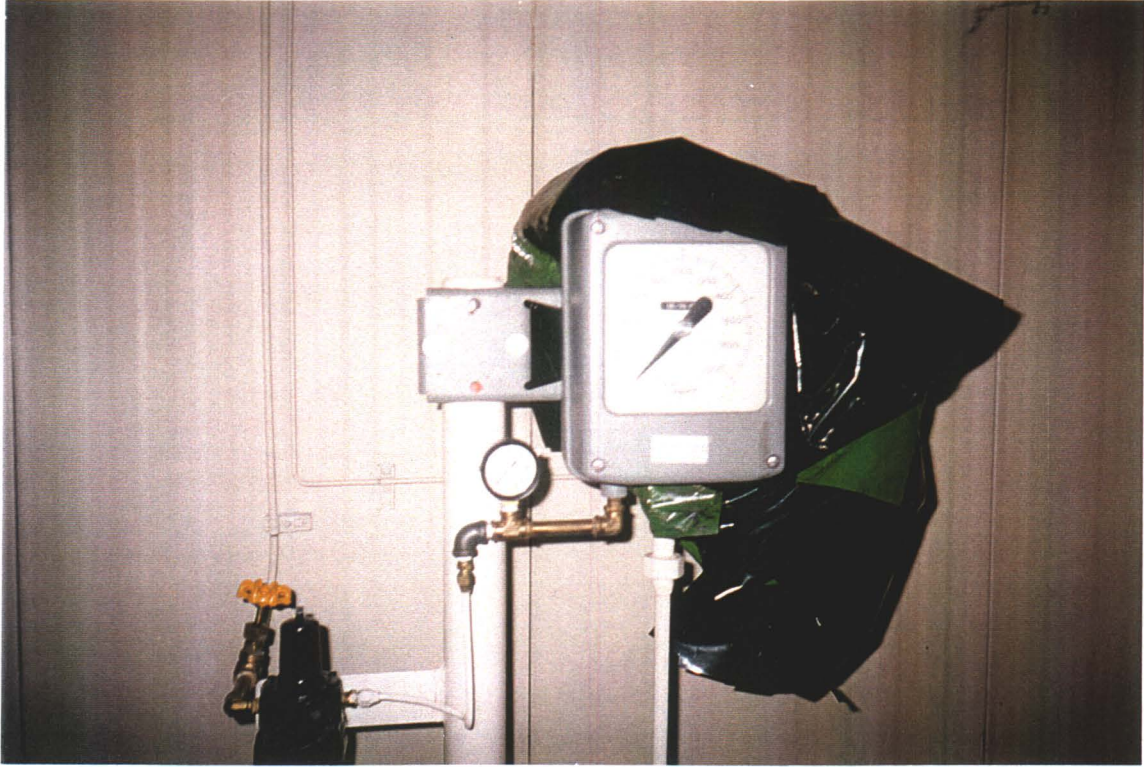


Engine Room. Engine control panel (one of two).

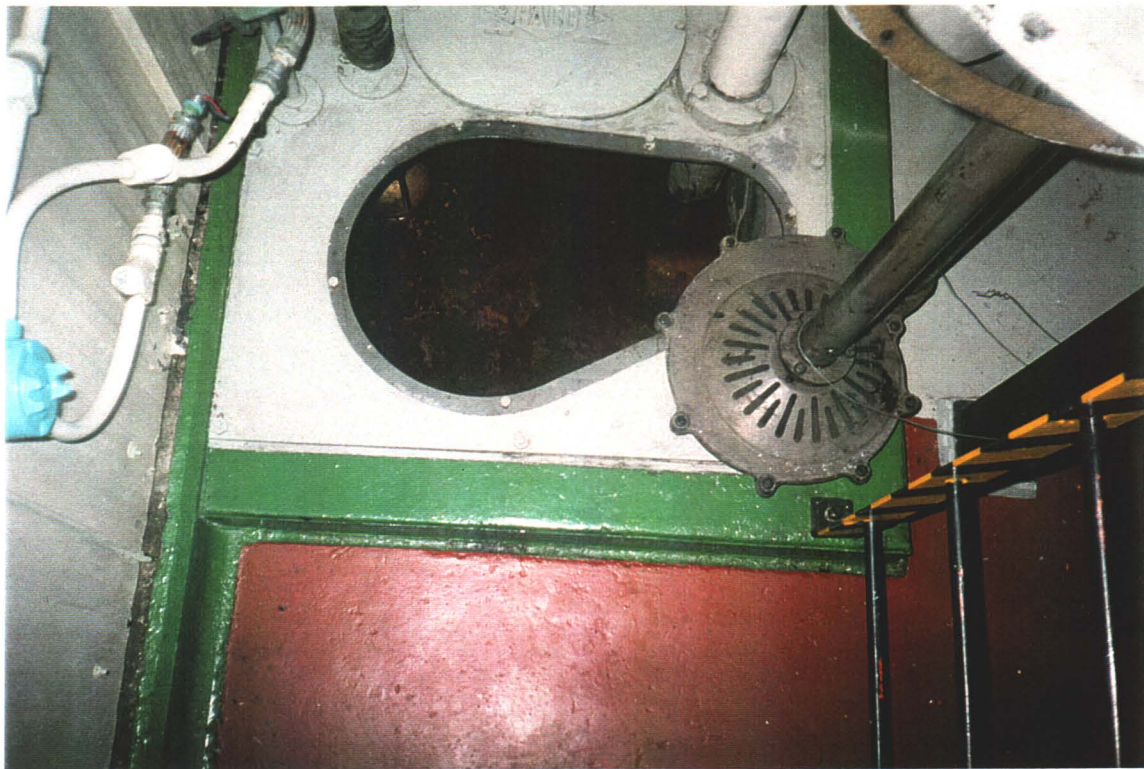


Engine Room. Diesel engine units to power compressors in adjoining Compressor Room. Both units are skid mounted. Exhaust systems are asbestos free, and each unit is equipped with engine jacket water coolers which have asbestos gasket connections to the engines.





Compressor Room. Metering device.

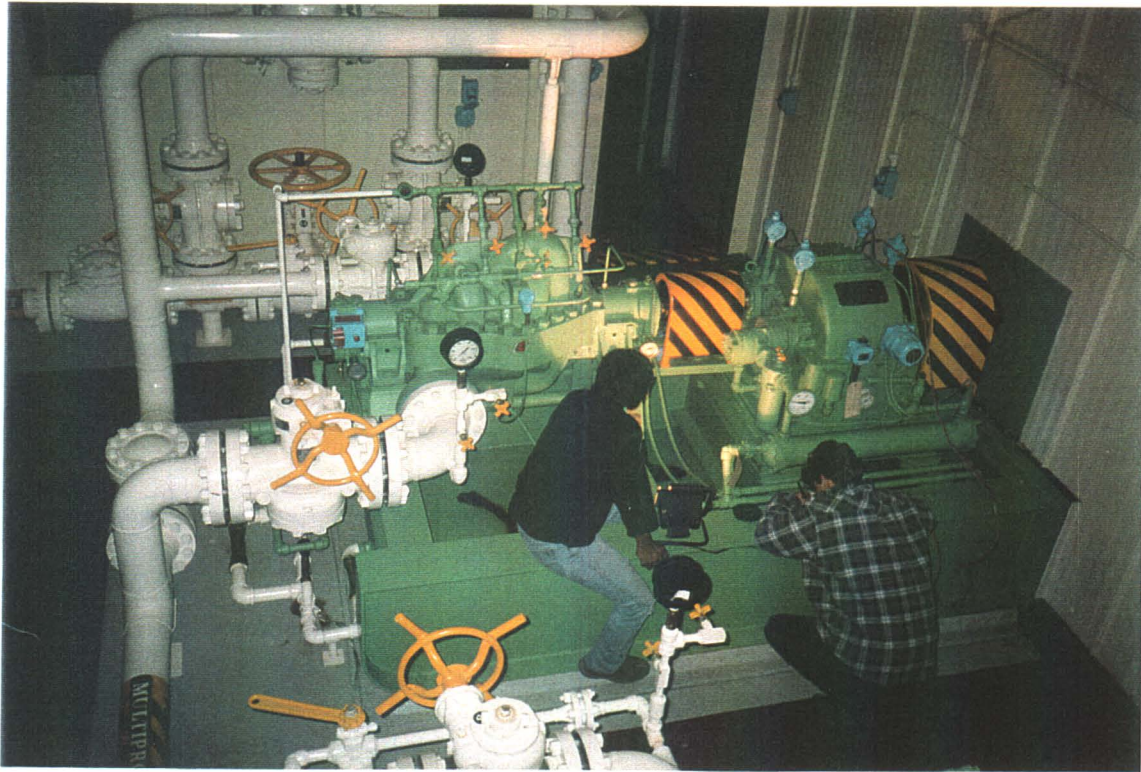


Compressor Room. Sump and stored electric sump pump. Sump contains antifreeze.



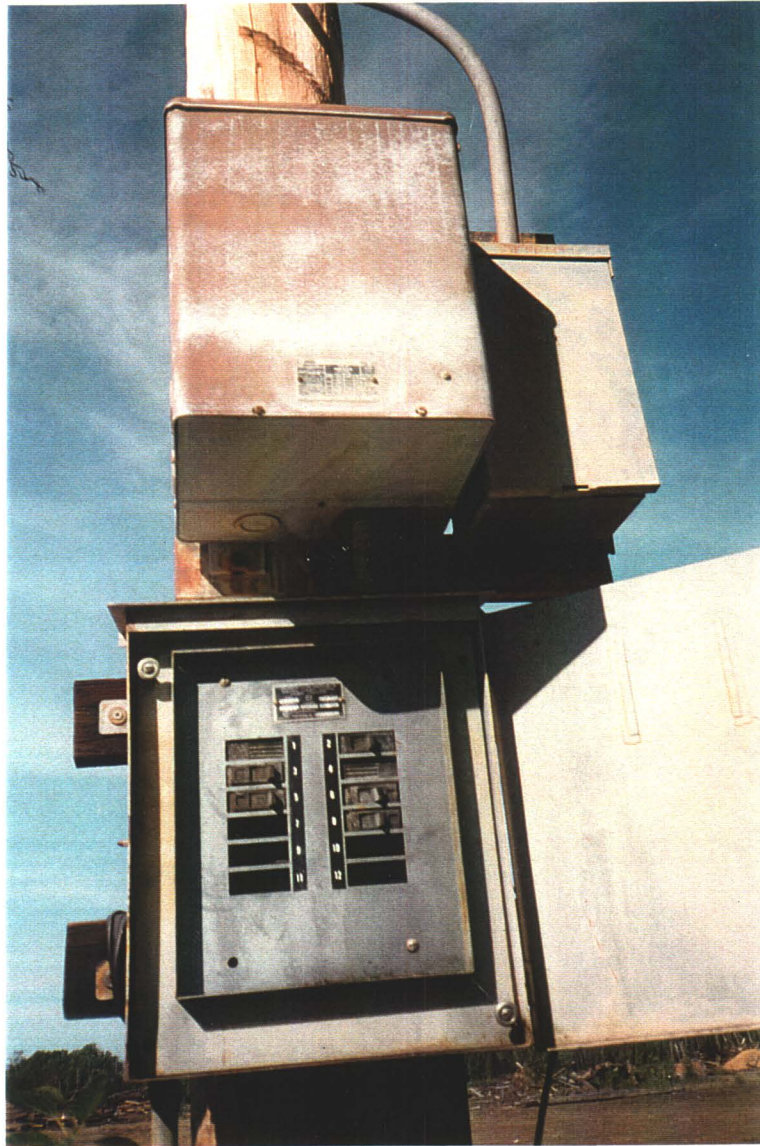
Compressor Room. Details of piping systems. Lines enter from outside, fuel is compressed and lines return to the outside. Lines are currently empty





Compressor Room. Two compressor units, both drained and filled (for storage) with P-9 light oil.
(note: all lead-based paint in this room)

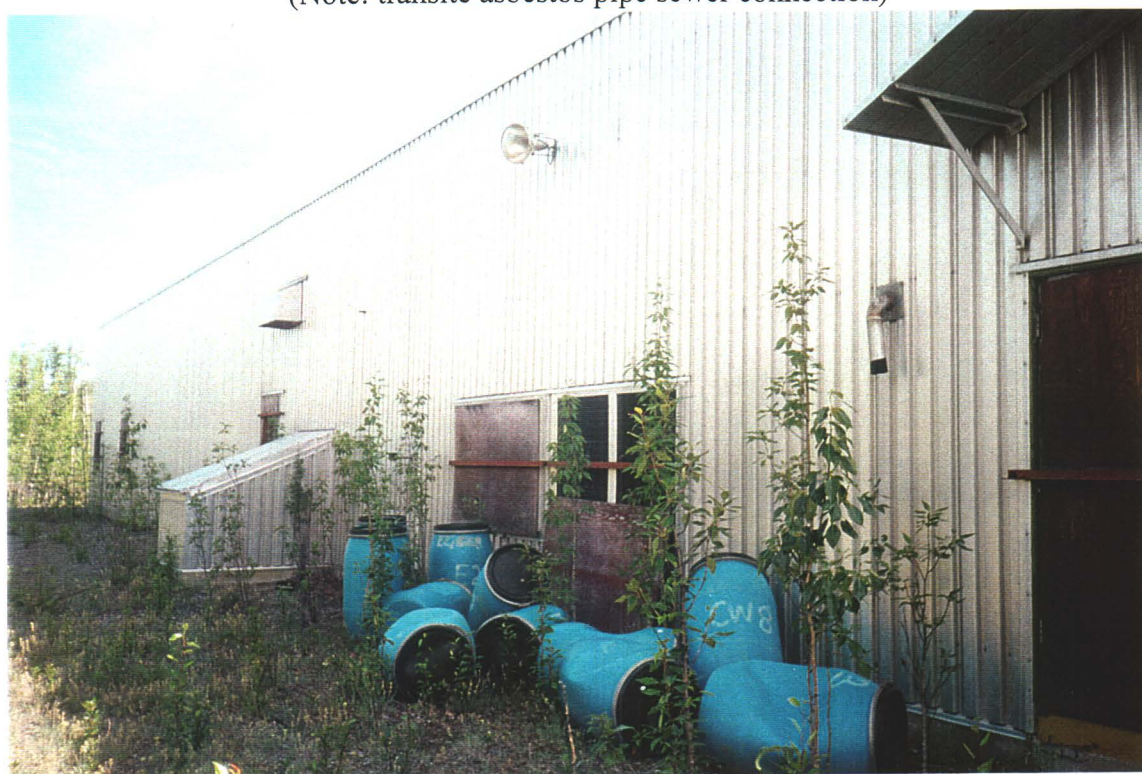




Dry transformer box and panel for trailer stalls.



Typical services pit at each trailer stall (one of six).
(Note: transite asbestos pipe sewer connection)



Front of Main Building. Containers are from an unrelated
DIAND project and are to be removed.



Back of main building. Note stainless steel ventilation structures, and asbestos-filled Generator Room stacks.



Location of two underground storage tanks and former pump island.



Main Building. Pipeline entry/exit lines.



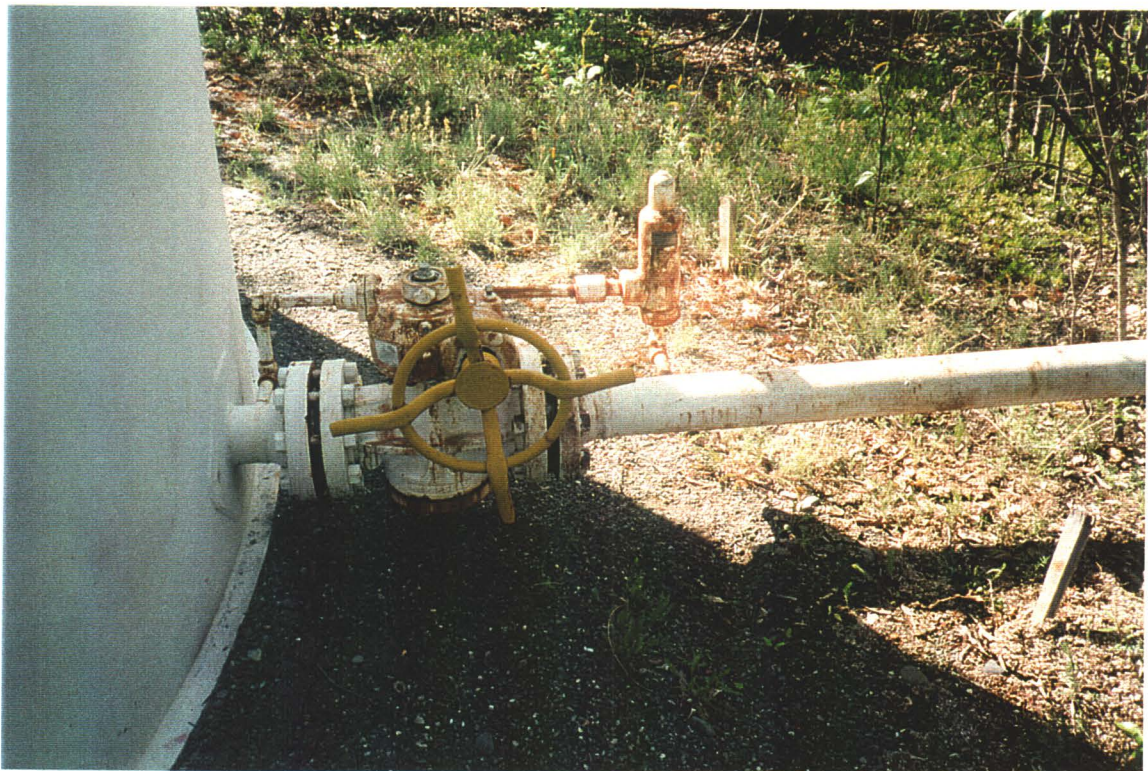
300 barrel tank, cleaned and inspected March 1, 1968



Main product tank, 1440 barrel capacity. Man-way loosely bolted, indicating entry following product removal.

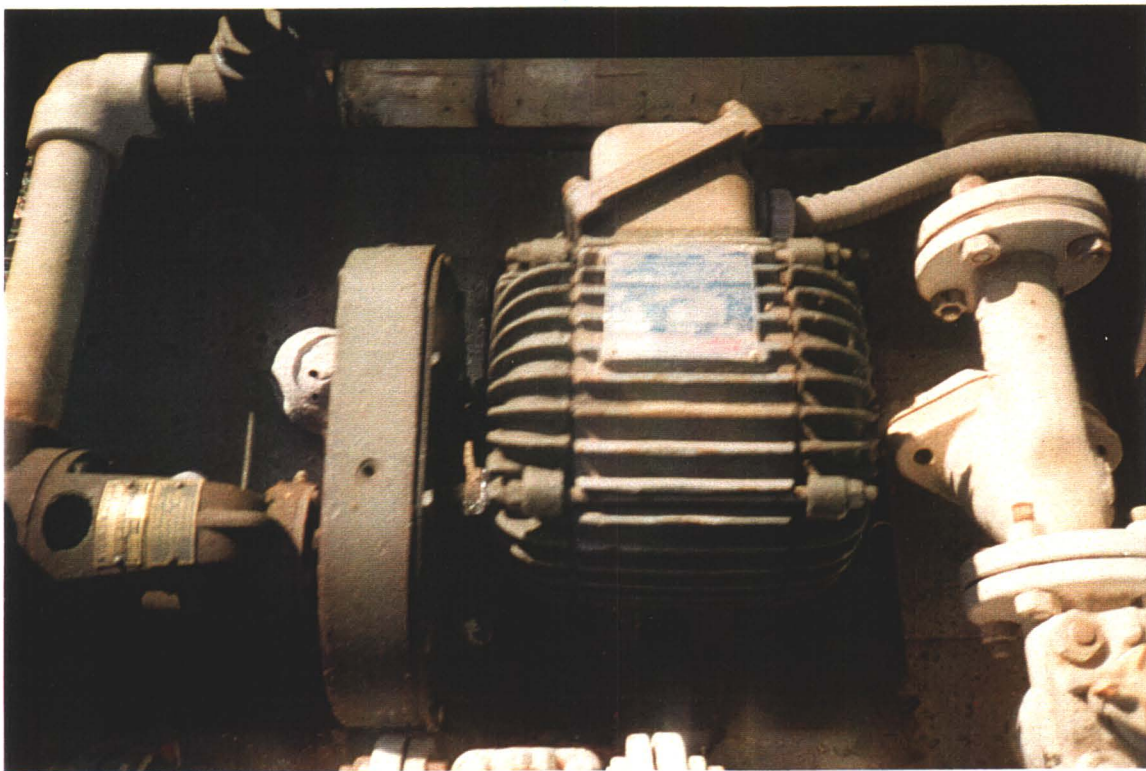


Bulk storage tanks line connections.





Day tank



Product transfer pump, in protected housing.