

HJ030

**Inventory of Equipment, Machinery,  
Major Fixtures and Hazardous Materials  
at the Haines Junction Pumping Station,  
Yukon Territories.**

**Prepared for  
Indian and Northern Affairs Canada**

**August, 1998**

**Prepared by  
Arctic Environmental Services Ltd., and KO KEN General Contractors**

## **Table of Contents**

	Page
1.0 Introduction	1
2.0 Project Scope	1
3.0 Methodology	2
3.1 Review of Documents	2
3.2 Health and Safety Plan	2
3.3 Building Assessment	3
3.4 Equipment Inventory	3
3.5 Hazardous Materials Assessment	3
4.0 Inventory Results	3
5.0 Conclusions	12

## **List of Figures**

Figure 1 Site Layout	4
Figure 2 Locations of Major Equipment	5

## **List of Appendices**

Appendix A System Flow Diagram	
Appendix B Laboratory Results	
Appendix C Photographs of Station	

## 1.0 Introduction

Indian and Northern Affairs Canada (DIAND) contracted Arctic Environmental Services Ltd., and KO KEN General Contractors to complete an inventory of equipment, machinery, major fixtures and hazardous materials at the Haines Junction Pumping Station.

The Haines Junction Pumping Station was one of a series of six stations in Canada constructed to pump fuel products across the Yukon into the U.S. in support of common defense efforts. Original construction and operation of these Stations was by the U.S. Military. Upon decommissioning, the stations ultimately were transferred to Indian and Northern Affairs Canada.

**The Haines Junction Pumping Station is a sister design to the Donjek Pumping Station. The facility buildings and contents are virtually identical. The reader is encouraged to read the Donjek Pumping Station report in conjunction with this one, in that sample results for building components in one would also be true for the other. The conclusions based upon these similarities are often identical as well. The writer has used these shared features to the maximum benefit of the project.**

This current investigation is supplementary to two previous investigations completed during 1995, which focussed on the yard areas outside the buildings rather than on the buildings and interior items. These two former investigations produced the documents entitled "*Haines Fairbanks Pipeline: Environmental Assessment of Beaver Creek, Donjek and Destruction Bay Pumping Stations*" (Lorimer & Associates, Hemmera Resource Consultants Ltd., 1995); and "*Preliminary Environmental Assessment Haines-Fairbanks Pipeline*", UMA Engineering, Ambio Research Associates, 1995).

In addition, DIAND personnel has previously collected and removed all of the ballasts from the overhead light fixtures at the Station. We presume that some of these ballasts contained PCB's, although this has not been confirmed.

The work at the Haines Junction Pumping Station was conducted during the period June 29<sup>th</sup> through August 15<sup>th</sup>, 1998.

## 2.0 Project Scope

The intent of this investigation was to produce a complete inventory of all major capital structures at the Haines Junction Station as well as any hazardous material components of these structures and their contents.

The term "inventory" includes both verification of the presence and quantity of hazardous materials on site.

### **3.0 Methodology**

#### **3.1 Review of Documents**

We reviewed the documents "*Haines Fairbanks Pipeline: Environmental Assessment of Beaver Creek, Donjek and Destruction Bay Pumping Stations*" (Lorimer & Associates, Hemmera Resource Consultants Ltd., 1995); and "*Preliminary Environmental Assessment Haines-Fairbanks Pipeline*", UMA Engineering, Ambio Research Associates, 1995).

These documents were useful in that they suggest that there is not a lot of concern respecting contaminants outside the structures. In addition, their conclusion from swabs collected inside the buildings was that there was clearly not a concern with respect to free PCB's at the Station.

#### **3.2 Health and Safety Plan**

An emergency response procedure and safe work practices for each phase of the operation were devised to cover initial entry and subsequent entry for sampling and measurements.

The items of immediate concern related to interior darkness; building integrity; "sharps" on the floors; and the existence of pressure vessels, capacitors, friable asbestos, lead paint, and mercury (from pressure gauges and switches). Personal protective equipment selected and worn was appropriate during all phases of the project period, and included:

##### ***Initial tour:***

- Generator, portable lights
- Ladder
- Tyvex suits
- Respirator (HEPA filter) protection
- Latex gloves
  - Camera
  - 2 way radios
  - Steel-toed boots with steel shanks
  - Rope
  - Sampling containers (liquids and solids)

The initial tour was undertaken by an environmental specialist and a demolition contractor, who identified risk with respect to hazardous materials and building integrity.

##### ***Subsequent Entry***

Safety gear and procedures as determined by risk factors determined during first entry.

### **3.3 Building Assessment**

An inventory and table of general description and dimensions of each structure was prepared. This included preparation of a site/building layout drawing.

### **3.4 Equipment Inventory**

Within each structure, we photographed and tabularized the equipment, machinery, stored product, and fixtures contained within. This included motors, engines, pumps, heating/cooling units, storage/holding tanks, compressors, boilers, overhead door units, and controls. Serial numbers, volumetric information, and manufacturers were recorded, and the general condition of each item was noted, particularly where there was opportunity for salvage or sale of the item.

### **3.5 Hazardous Materials Assessment**

This assessment combined our experience on similar project sites with sample collection and verification by confirmatory analyses. The list of expected materials occurring included asbestos, glycol, antifreeze, lubricating oils, fuels, mercury, and lead paint. We confirmed the existence and quantity of asbestos-containing structural material and insulation, as well as pressurized vessels.

## **4.0 Inventory Results**

Figure 1 provides a regional location map. Figure 2 provides a drawing of the major facilities (not to scale), complete with interior information on equipment location. The reader can refer to Figure 2 for locations in conjunction with both the Tables and the photographs, all of which are organized and presented on a room by room basis in each building, plus outside items.

Appendix A provides an overall pumping facility flow diagram for reference. Appendix B provides laboratory analyses results from samples selected for testing. Appendix C contains photographic records of all major items inventoried.

The inventory results are provided in tabular form below. Table 1 focuses on buildings and building components. Table 2 focuses on equipment, and Table 3 focuses on hazardous materials.

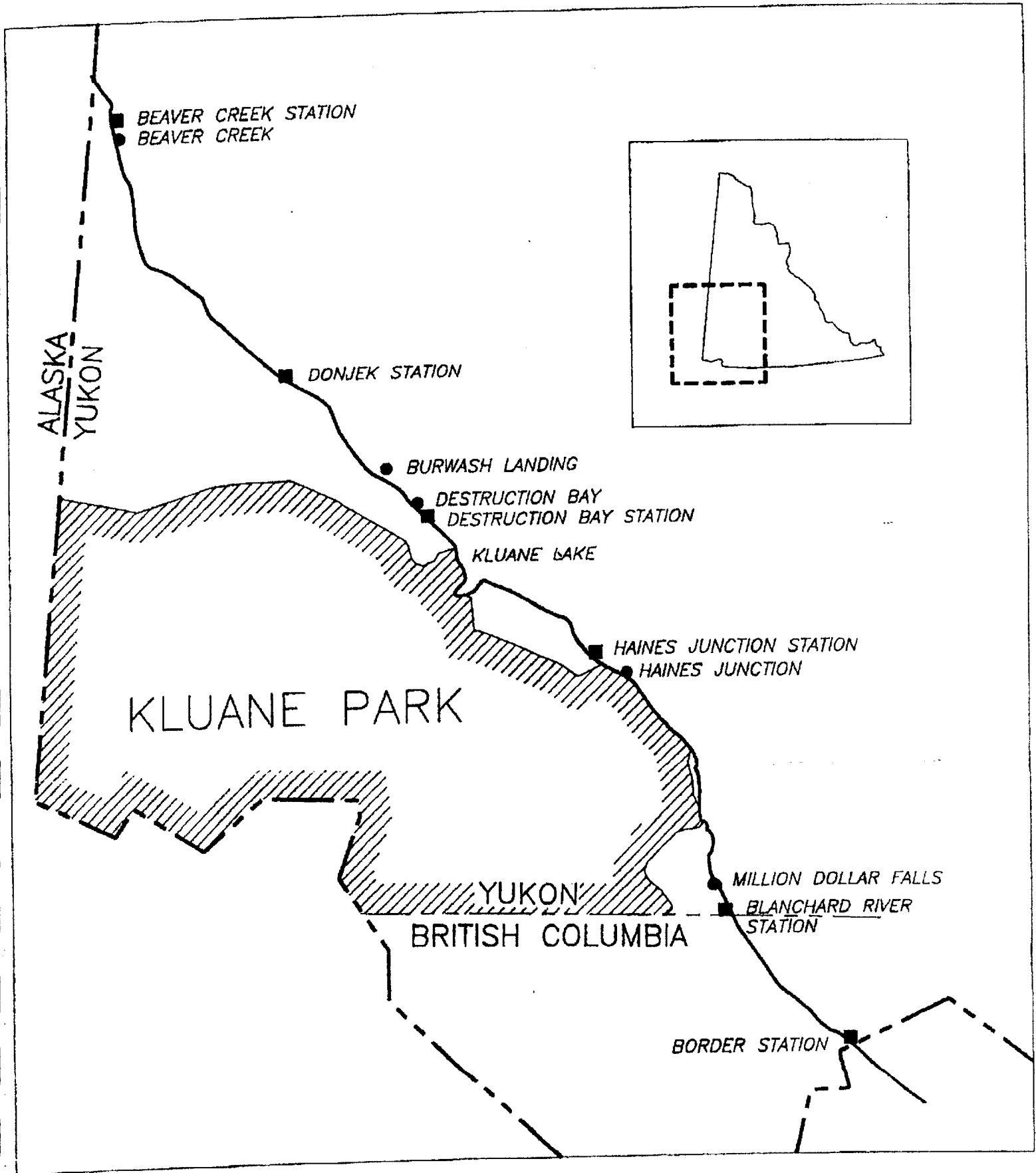


Figure 1 Site Layout

## Reference List for Figure 2, Haines Junction Station

### **A. Main Building**

1. Water tank room
2. Generator room
3. Mechanical Room/Shop
4. Maintenance fluid tank
5. Office
6. Washroom
7. Furnace room
8. Kitchen

### **B. Fan Building**

### **C. Compressor building**

9. Engine room
10. Engines
11. Maintenance fluid tank
12. Compressor room
13. Pumps
14. Furnace room

### **D Quanset Building**

### **E Single Residence**

### **F Multiple Residence**

15-20 Residential units

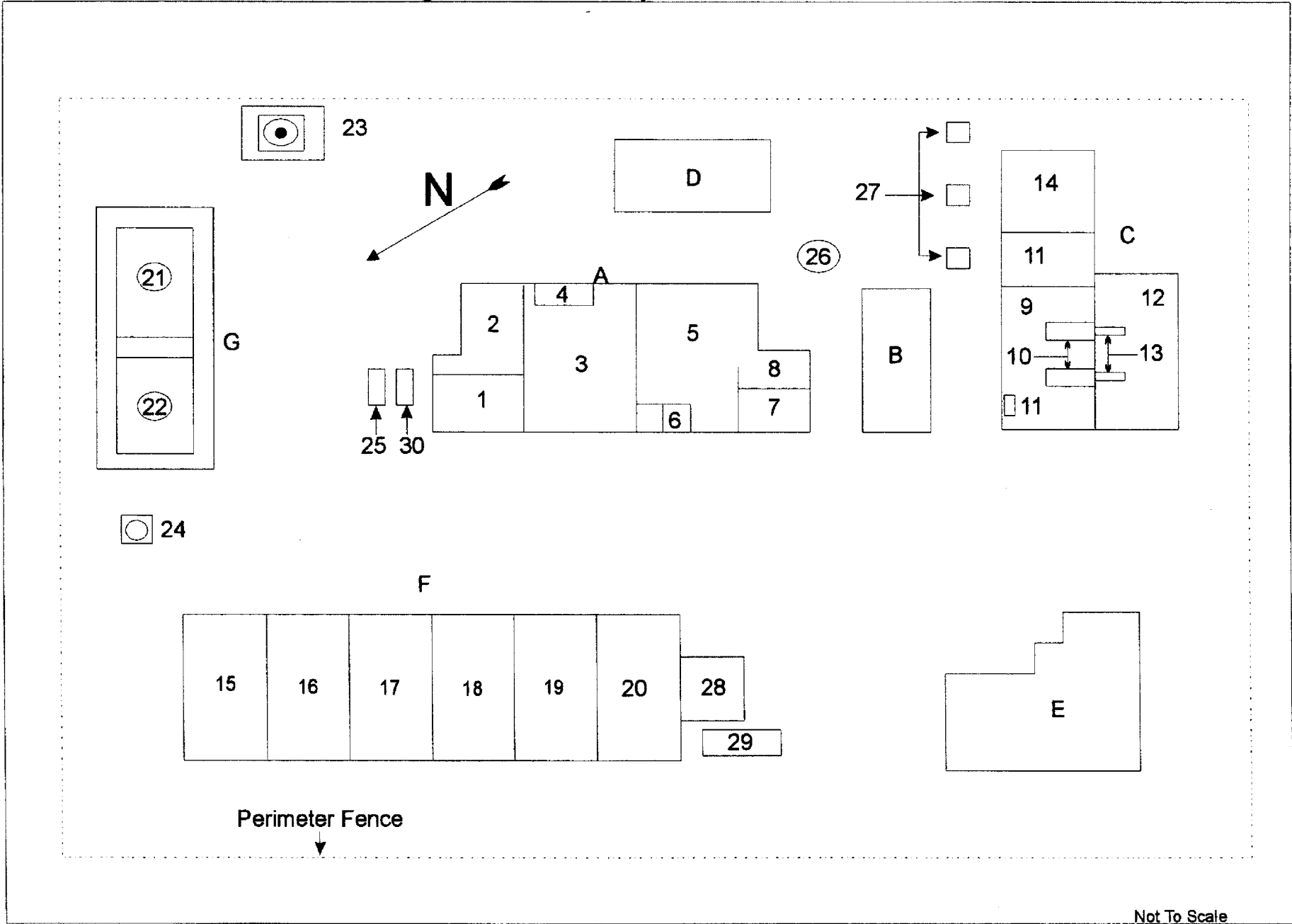
### **G Tank Farm**

- 21 Tank 21
- 22 Tank 22

### **Other**

- 23 Bored well
- 24 Incinerator
- 25 Concrete vehicle fuel tank/pump island
- 26 Day tank
- 27 Sewer system
- 28 Boiler room
- 29 Water tank
- 30 Mechanic's pit

Figure 2. Site Layout Haines Junction



**Table 1 Buildings and Building Components**

Building Name	Drawing Identifier	Construction Components	Hazardous Components	General Dimensions	Currently Hazardous Entry	Condition
Main (water storage, generators, shop, office/ Kitchen.	A	<ul style="list-style-type: none"> <li>Steel truss on concrete pad foundation. Steel siding, drywall and asbestos board interior walls).</li> <li>Fibreglass insulation inside walls</li> </ul>	Asbestos pipe insulation, asbestos floor tile, asbestos wallboard and lead paint on walls. Hazardous items housed inside building.	90'x32'	No current problem. Do not disturb asbestos or lead paint.	Significant vandalism
Pumphouse/ engine room/office/ furnace room.	C	Steel frame building on Concrete pad, steel siding, fiberglass insulation in walls.	Asbestos insulation in outside entry door, asbestos pipe insulation present, lead paint throughout, stored maintenance fluids.	65'x40'x	No, except if asbestos materials are broken or disturbed. Fall hazards present	Extensive vandalism and weather damage to building. Engines/ Pumps/ furnace salvageable.
Fan Building	B	Steel frame with metal cladding, concrete pad	No contents.	15'x31'	No.	No contents. Side has been removed and replaced with plywood.
Quanset Building	D	Steel frame building with metal cladding. Floor has been removed, except for steel support structure	No hazardous materials.	25'x50'	Hazardous only with respect to "sharps" on floor.	Extensive vandalism to contents. Building is salvageable.
Sewer system	27	Concrete pits (5), about 5' deep. Covers present	No hazardous materials.		Fall hazard.	N/A
Single Residence	E	Wood frame construction on full height concrete basement.	Asbestos in a few pipe joints, 1 mercury switch in basement.	37'x35'	No current hazard, unless asbestos and mercury disturbed.	Extensive vandalism and weather damage to building.
Multiple 2-story Residence (7 Units)	15-20, 28	Wood frame construction on full height concrete basement.	Asbestos in pipe joints, 1 mercury switch in each basement.		Asbestos in basement units has been disturbed. Expected	Extensive vandalism to building. Some stairways to

		Boiler room attached provides heat to units. Consists of water storage tanks and boiler/pressure system.	Extensive friable asbestos content.		elevated fibre count throughout building units  Yes. Extremely hazardous area due to large quantity of loose asbestos, high fibre content.	basements are missing  Extensive vandalism to items inside building.
Power Poles	East/west through main yard	10 poles, with one equipped with a breaker box and dry transformer.	None apparent	Conventional	No	Good

**Table 2: Identified Equipment Items**

<b>Item</b>	<b>Location(s)</b>	<b>Identifiers</b>	<b>General Condition</b>
Compressor (air)	Engine room (9)	SN T-375-22 SN B7815	Engine missing off unit. Otherwise appears OK, although mechanically unknown. Unit properly mothballed
Pumps	Compressor Room  2 identical pump units, powered by engines from engine room	SN removed Type 4x6-4stg-0Lmx-set SN removed  SN removed Type 4x6x9.5 Model 140HS100 SN removed	Excellent, although mechanically unknown. Units properly mothballed
Overhead Heaters/furnaces	Shop (3) <ul style="list-style-type: none"> <li>2 diesel heaters</li> </ul> Compressor bldg (14) <ul style="list-style-type: none"> <li>2 diesel furnaces</li> </ul> Single Residence (E) <ul style="list-style-type: none"> <li>1 diesel furnace in basement</li> </ul> Engine room (2) <ul style="list-style-type: none"> <li>1 overhead heater</li> </ul>	Model # 057189M Cp-885547 Max fire rating 7.35 Model # 057189M Cp-885551 Max fire rating 7.35  No# L453752 ID # 0F4-259-1M SN # 5869K00073  No# L453798 ID # 0F4-259-1M SN # 5869J00014	All heater units appear to be in excellent, stored condition, although mechanically unknown. Units were all properly mothballed.
Water Tanks	Outside boiler room (29) <ul style="list-style-type: none"> <li>steel tank.</li> </ul> Water room (1) <ul style="list-style-type: none"> <li>2000 gallon steel high pressure tank.</li> </ul>		Both in excellent condition, although coated with lead paint. Units properly mothballed by draining, and are re-usable. Covers remain off, but are present.
Generators	Generator room <ul style="list-style-type: none"> <li>Cat engine and generator</li> </ul>	SN 8090000 TYPE ati Model 34G758 Volts 480  CAT 2V6107	Excellent, although mechanically unknown. Units properly mothballed

	<ul style="list-style-type: none"> <li>Cat engine and generator</li> </ul>	<p>Engine 571057100 Type S0KW 6 cylinders</p> <p>SN 809000? Model 34G758 Cat 2V6106 Model D13000 Engine 57099</p>	
Fuel storage tanks	<p>Outside, within unlined berm: (G)</p> <ul style="list-style-type: none"> <li>500 barrel tank</li> <li>1400 barrel tank</li> </ul> <p>10 barrel heated day tank (26)</p> <p>1 underground fuel tank (25)</p>	<p>Apparently empty. Apparently empty.</p> <p>Apparently empty.</p> <p>This tank was accessed through filler cap, had 4' of diesel/water inside.</p>	<p>Good condition, except for bullet holes in side walls. No interior inspection on either tank.</p> <p>Good condition. No interior inspection</p> <p>Unknown condition</p>
Diesel Power Units	<p>Engine Room</p> <p>2 identical engines c/w gear drives for compressor pumps.</p> <p>Bolt mount units</p>	<p>SN 56466 TYPE 89cp RPM 705-805 Horsepower 372-425</p> <p>ID plate removed</p>	<p>Excellent, although mechanically unknown. Units properly mothballed. Minor vandalism.</p>
Lighting	<p>All rooms, fluorescent fixtures</p>		<p>All ballasts removed by DIAND personnel</p>
Overhead Doors	<p>Shop room (3) 2 overhead doors, 10'x10'.</p>		<p>Poor condition</p>
Boilers	<p>Boiler room (28)</p> <ul style="list-style-type: none"> <li>Boiler #1</li> </ul>		<p>Significantly vandalized</p>
Pressure Guages	<p>Boiler, Generator, Compressor Rooms</p>	<p>Various. Estimated 20 guages</p>	<p>Unknown, although units intact.</p>
Pipeline Components	<p>Compressor Room.</p>	<p>Drained</p>	<p>Excellent, although mechanically unknown. Units properly mothballed</p>
Control Panel Units	<p>Generator room (2)</p> <p>Compressor room (12)</p>	<p>No serial numbers on units. Multiple guages on each panel, each with serial numbers</p>	<p>Excellent, although mechanically unknown. Units properly mothballed</p>

**Table 3: Identified Hazardous Materials**

<b>Material</b>	<b>Description</b>	<b>Location</b>	<b>Quantity</b>	<b>Current Risk</b>
Asbestos	Asbestos wallboard	(A)	100 sheets	Current low risk. High risk if cut with power tools.
	Asbestos elbows and insulation on heating pipes.	(A,C,E,F)	150 joints	Current low risk. High risk if disturbed.
	Floor tile	(5,11,E,F)	1000 9"x9" tile	Current low risk. Moderate risk if disturbed.
	Boiler	(28)	1 cubic meter	Current high risk, friable asbestos has been disturbed by vandalism.
	Exterior cladding	(E)	37'x35' x12'	Moderate risk if disturbed.
	Door insulation	(C)	1 door	Current high risk, due to vandalism. Friable asbestos fibres may be spread throughout this building.
Glycol	Exposed to atmosphere for some time	Fluid maintenance tank, mechanical room.	Less than 4 gallons	Low
Oil/lubricants	Fluid maintenance container, Mechanical Room/shop	(4)	Less than 10 gallons	Low
Solvent	Fluid maintenance container, Mechanical Room/shop	(4)		
Residual Fuel	UST's	(25)	100 gallons	Current low risk.
Mercury	Beads of mercury in switch gear	(A,C,E,F)	Est 5 guages	Current low risk. High risk if released

PCB's	N/A	N/A		N/A
Lead Based Paint		All paint is lead based, except for wall in residences.		Current low risk. Low risk if disturbed.
Random Chemicals (small quantities in containers)	None found			

## **5.0 Conclusions**

The following conclusions have been drawn from the inventory results.

### ***State of the Structures***

The structures at the Station which pose some risk include the following:

#### ***Main Building***

- Asbestos
  - Asbestos floor tile in office
  - 100 sheets asbestos wallboard in office
  - 35' of 2" asbestos insulated pipe
  - 150' of 10" asbestos insulated pipe in water tank room
  - 70' of 4" asbestos insulated pipe in generator room
  - 100' of asbestos insulated "I" beam, 16' of 8" asbestos insulated pipe
- Possibly some mercury switches
- Lead paint throughout

#### ***Compressor Building***

- Asbestos floor tile
- Free friable asbestos
- 26' of 10" pipeline, asbestos insulated
- Fall hazard
- Lead paint throughout

#### ***Quanset Building***

- "sharps" hazard.

#### ***Single Residence***

- 50' asbestos pipe wrap
- Asbestos floor tile in kitchen
- One mercury switch
- "sharps" hazard

#### ***Multiple residence***

- 50' asbestos pipe wrap each unit
- Fall hazard due to removed basement stairways
- Asbestos floor tile in kitchen
- Severe asbestos hazard in boiler room

#### ***General***

- One concrete underground storage tank remains on site and should be properly disposed of.

- There are no lights within any of the structures, and general entry should continue to be restricted until this is changed. A qualified electrician should thoroughly examine the electrical system before power is restored.
- There is lead paint on the floors and walls of each structure. Loose paint chips should be removed and disposed of as hazardous waste by a qualified contractor before the buildings are reused for any purpose.
- Previous reports indicate that there are no PCB's in the Station (previous report). Light ballasts have been removed by DIAND personnel.
- Glycol has been removed from all lines.
- There are no pressure vessels still charged.
- Only small quantities (estimated less than 150 gallons) of fuel, oil, and other liquid maintenance products remain at the station.
- Asbestos removal procedures applied by a qualified asbestos contractor must be undertaken to ensure that other equipment and building components are not contaminated by asbestos fibres during removal.
- The presence of lead paint has been confirmed throughout the Station on floor/wall paint and on equipment housed within. Lead removal procedures applied by a qualified contractor must be undertaken to ensure that other equipment and building components are not contaminated by lead dust during removal. The most feasible option is to remove loose paint chips and dispose of this material as hazardous waste. Paint that is currently in good shape can be encapsulated with acceptable paint or by wallboard.
- Lead paint on engines, steel piping, etc. can be safely removed from the buildings without concern during removal of these items. Whoever accepts these removed items must be warned of the lead paint content.

**Appendix A**  
**System Flow Diagram**



**Appendix B**  
**Laboratory Results**

Style 1 BC, DB  
Style 2 DJ, HJ.

E807214 CONT...  
PAGE 4

## ENVIRO-TEST CHEMICAL ANALYSIS REPORT

LAB ID	SAMPLE ID	TEST DESCRIPTION	RESULT	D.L.	UNITS	EXTRACTED	ANALYZED	BY
E807214-25	98-33	Res Walls DJ						
Sample Type: BULK								
E807214-26	98-04	floor outside freezer BC						
Sample Type: BULK								
		Lead, (Pb)	4660	10	mg/kg		07/09/98	GC
E807214-27	98-14	Wall Paint office BC						
Sample Type: BULK								
		Lead, (Pb)	5830	10	mg/kg		07/09/98	GC
E807214-28	98-21	Compressor Room DJ						
Sample Type: BULK								
		Lead, (Pb)	53800	10	mg/kg		07/09/98	GC
E807214-29	98-46	Grey siding HJ						
Sample Type: BULK								
		Lead, (Pb)	43300	10	mg/kg		07/09/98	GC
E807214-30	98-47	Water tank HJ						
Sample Type: BULK								
		Lead, (Pb)	4110	10	mg/kg		07/09/98	GC
E807214-31	98-13	Metal Paint Eng Room BC						
Sample Type: BULK								
		Lead, (Pb)	7030	10	mg/kg		07/09/98	GC
E807214-32	98-09	floor Boiler Room BC						
Sample Type: BULK								
		Lead, (Pb)	2850	10	mg/kg		07/09/98	GC
E807214-33	98-42	Green Eng. Block HJ						
Sample Type: BULK								
		Lead, (Pb)	60800	10	mg/kg		07/09/98	GC
E807214-34	98-43	Light Green office HJ						
Sample Type: BULK								
		Lead, (Pb)	6260	10	mg/kg		07/09/98	GC
E807214-35	98-44	White o Office HJ						
Sample Type: BULK								
		Lead, (Pb)	4050	10	mg/kg		07/09/98	GC
E807214-36	98-48	Apt Paint (inside) HJ						
Sample Type: BULK								
		Lead, (Pb)	1880	10	mg/kg		07/09/98	GC
E807214-37	98-05	Water tank BC						
Sample Type: BULK								
		Lead, (Pb)	2610	10	mg/kg		07/09/98	GC
E807214-38	98-45	Multi-Comp Room HJ						
Sample Type: BULK								
		Lead, (Pb)	43500	10	mg/kg		07/09/98	GC
E807214-39	98-41	HJ						
Sample Type: SOIL								
		TVH and TEH in Soil % Moisture	2.3	0	%		07/08/98	MD

E807214 Cont...  
PAGE 2**ENVIRO-TEST CHEMICAL ANALYSIS REPORT**

METHOD:NIOSH 9002

TEST: Bulk Asbestos Content

SAMPLE DESCRIPTION	LAB-ID	Asbestos Type	Percent * Asbestos	Other Fibres Present
11 Gen Stack Insul.	E807214-01	AMOSITE	50	NONE
30 Res Boiler	E807214-02	AMOSITE*	50	MMVF
40 Haines Door	E807214-03	CHRYSTOTILE	40	MMVF
12 Asb above HWT	E807214-04	CHRYSTOTILE	70	MMVF
25 Pipe wrap	E807214-05	N.D.	<1	ORG, SYN
51 Boiler outside Insulation	E807214-06	AMOSITE	50	MMVF, OTHERS*
26 office ceiling	E807214-07	N.D.	<1	ORG
24 pipe wrap	E807214-08	N.D.	<1	ORG
27 insulation quauset	E807214-09	N.D.	<1	MMVF
29 I-beam filler	E807214-10	TREMOLITE	1	SYN
28 Ins. machine shop	E807214-11	N.D.	<1	MMVF
23 floor tile	E807214-12	CHRYSTOTILE	5	SYN
20 Product PL Insul	E807214-13	N.D.	<1	NONE
50 Apt Boiler door	E807214-14	CHRYSTOTILE	10	MMVF, ORG
49 Pipe Ins Apt Boiler room	E807214-15	CHRYSTOTILE	70	MMVF
08 Res tile Pipe Ins	E807214-16	N.D.	<1	MMVF
32 Res Tile	E807214-17	CHRYSTOTILE	5	NONE
31 Res Basement	E807214-18	CHRYSTOTILE**	40	MMVF
07 Elbow	E807214-19	CHRYSTOTILE	5	MMVF
10 Boiler pipe #1	E807214-20	CHRYSTOTILE	80	MMVF
06 Boiler ceramic	E807214-21	N.D.***	<1	MMVF
11 boiler exterior Ins.	E807214-22	N.D.	<1	MMVF
02 Brick	E807214-23	N.D.	<1	NONE

N.D - None Detected.

\* Percent asbestos determined by visual approximation.

MMVF-man-made vitreous fibres; Org. - organic fibres

Method: Polarized microscopy/dispersion staining.

THIS IS THE LAST PAGE OF THE ASBESTOS REPORT.

**Appendix C**  
**Photographs of Station**



Overall Site Perspective. Residences on right, station facilities on left. Photo from top of bulk fuel tank.



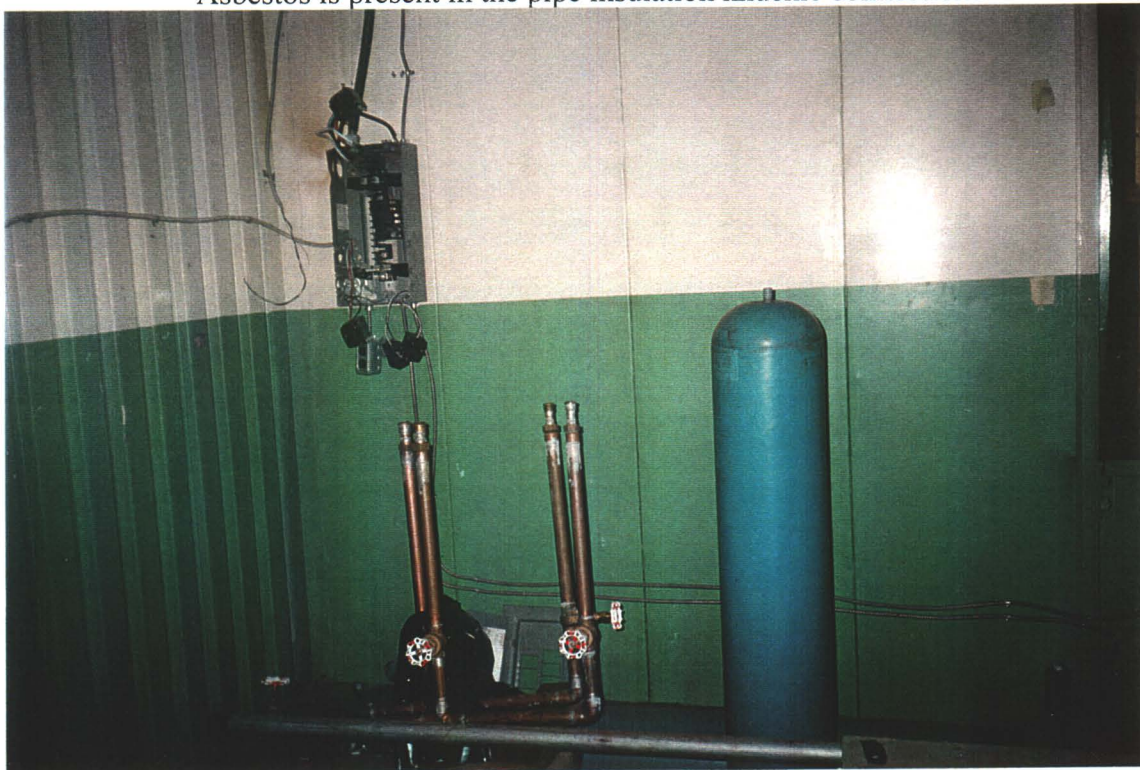
Main building. Front of building, which houses office, shop, generator room, and water supply.



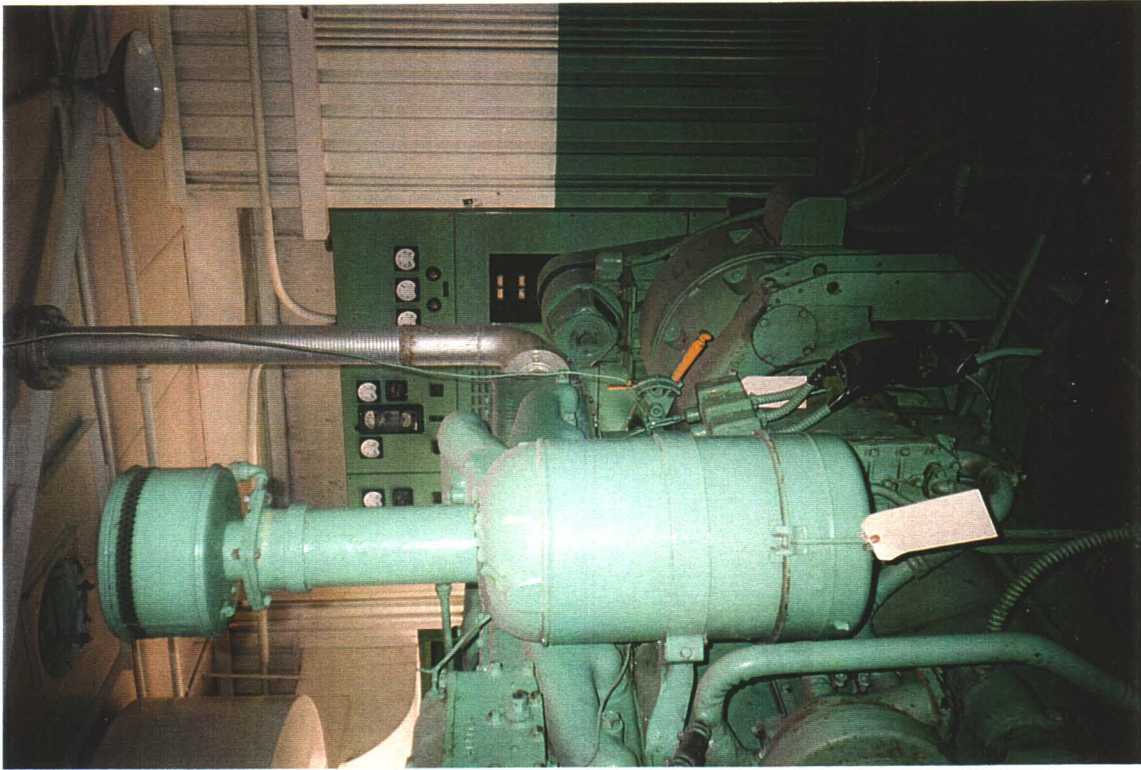
Main Building. Back side. Building is metal frame structure on concrete pad.



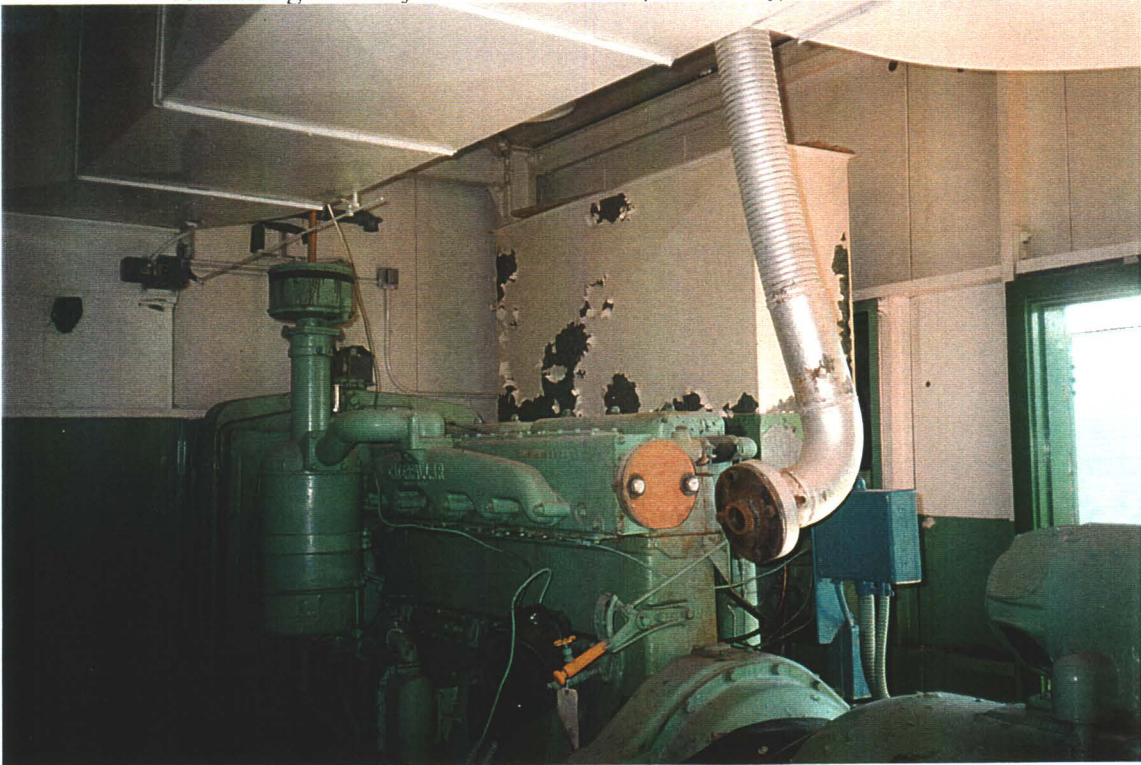
Main Building. Water Storage Room. This room houses a drained water tank and various flow metering devices and pressure system. Asbestos is present in the pipe insulation knuckle connections



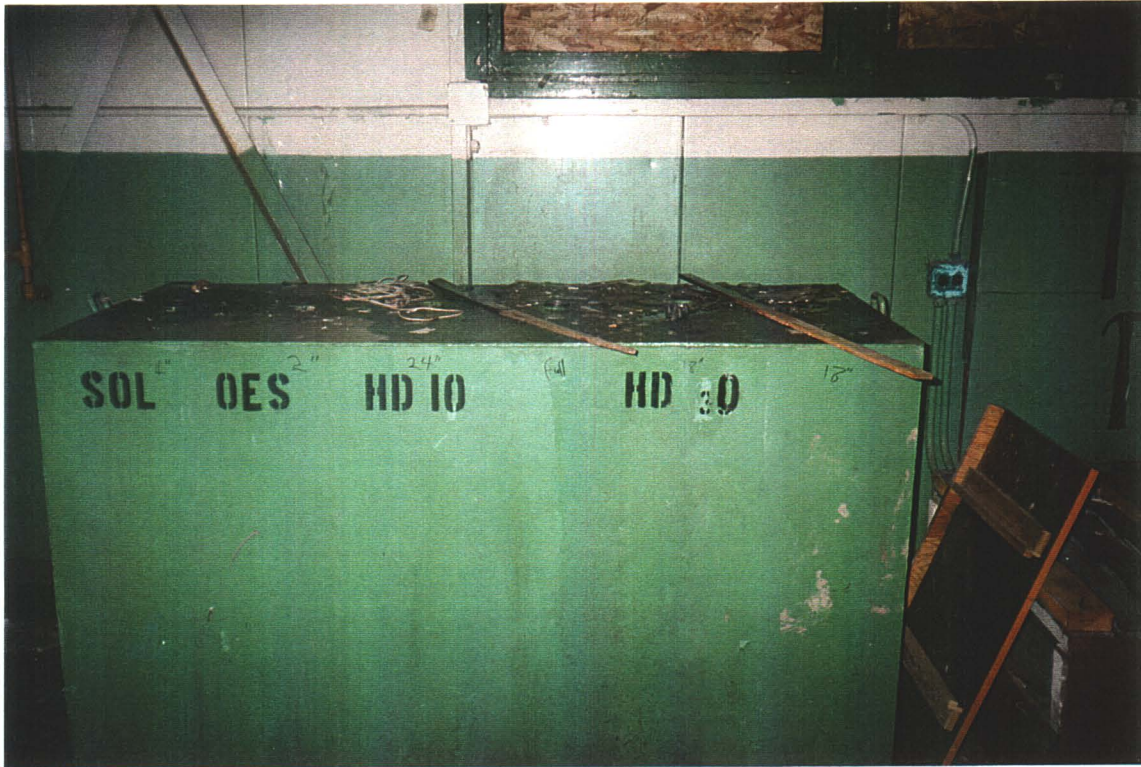
Main Building. Water Storage Room. Pressure system has been removed. Lead paint is present throughout.



Main Building. Generator Room. Unit 1, with control panel in background, possibly containing mercury switches. Green paint is high in lead content.



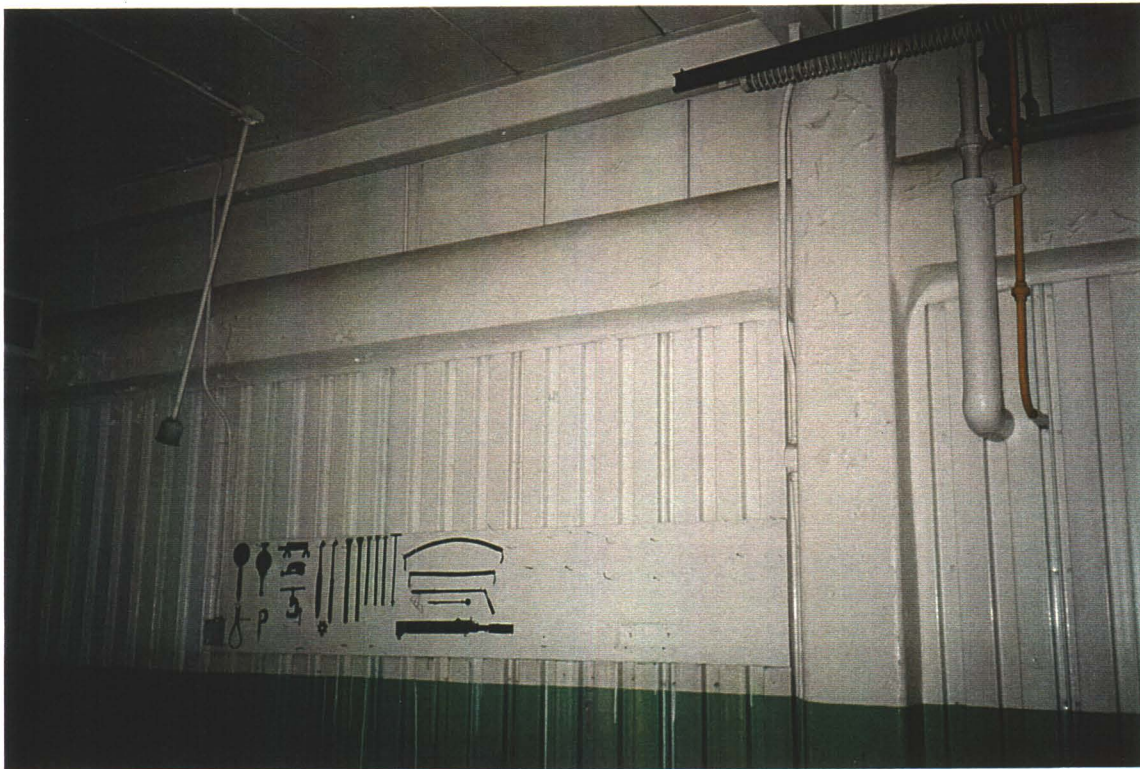
Main Building, Generator Room. Unit 2.  
Engines were properly mothballed, but parts have been vandalized



Main Building, Shop. Service fluid storage tank, intact with no leaks.



Main Building, Shop. Overhead heat exchanger.  
Note lead paint peeling from metal walls on building interior.



Main Building, Shop. Asbestos-filler in I-beams. Friable asbestos.



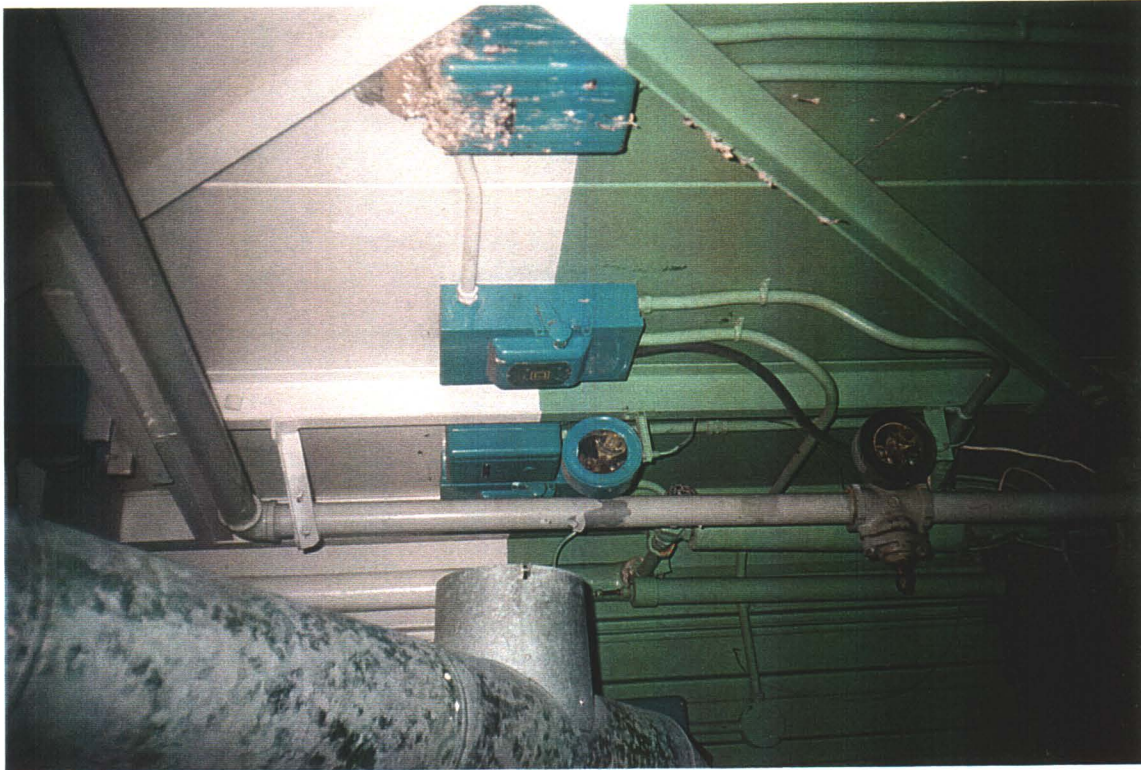
Main Building, Shop. Debris in shop, including several empty containers, one full of new oil.



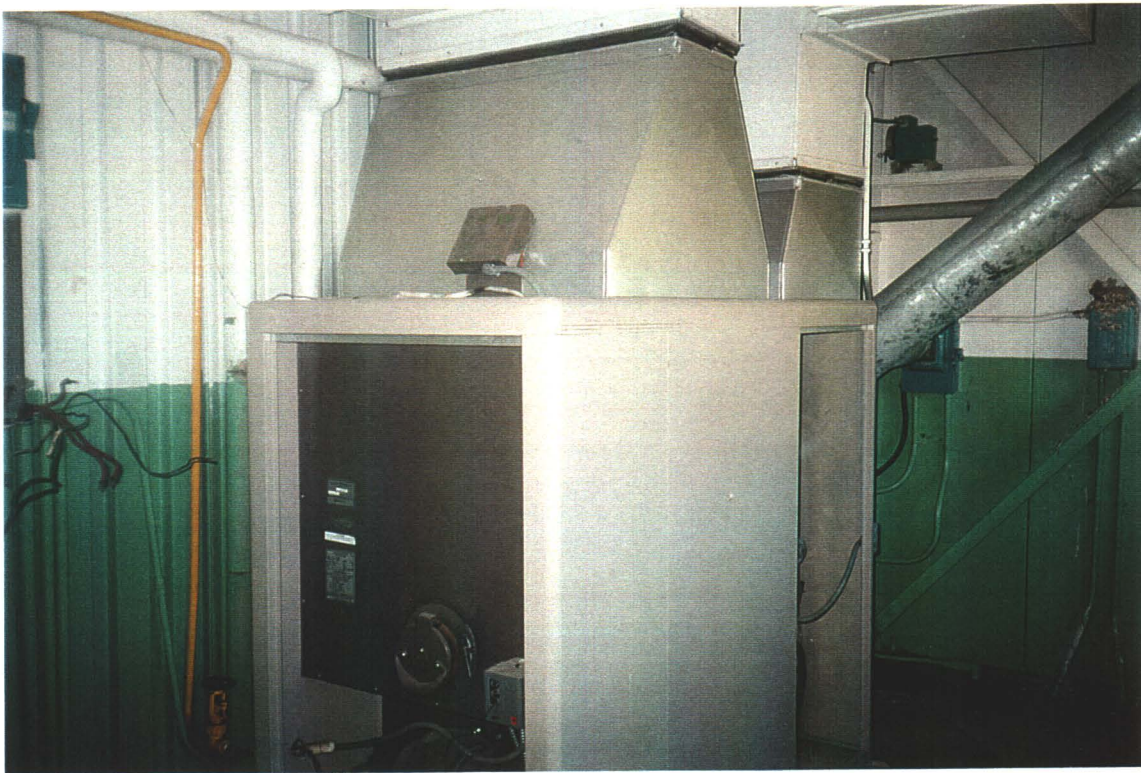
Main Building, Office Room. Note asbestos floor tiles and lead paint on walls. Interior walls are asbestos wallboard.



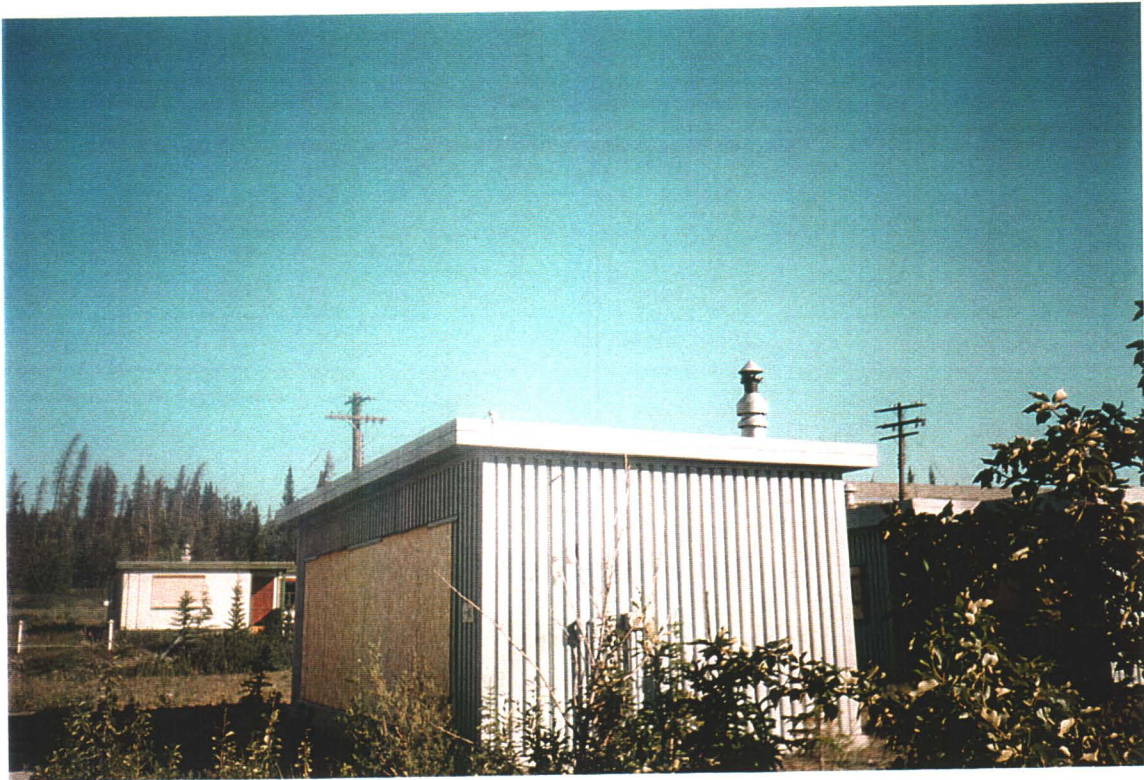
Main Building, Office Room. Kitchen area. Drop ceiling is asbestos free. Piping above has asbestos content, at least in knuckles.



Main Building, Office Room furnace area. Interior walls are asbestos, as are pipe joints. Mercury switches in electrical circuitry.



Main Building, Office Room furnace.



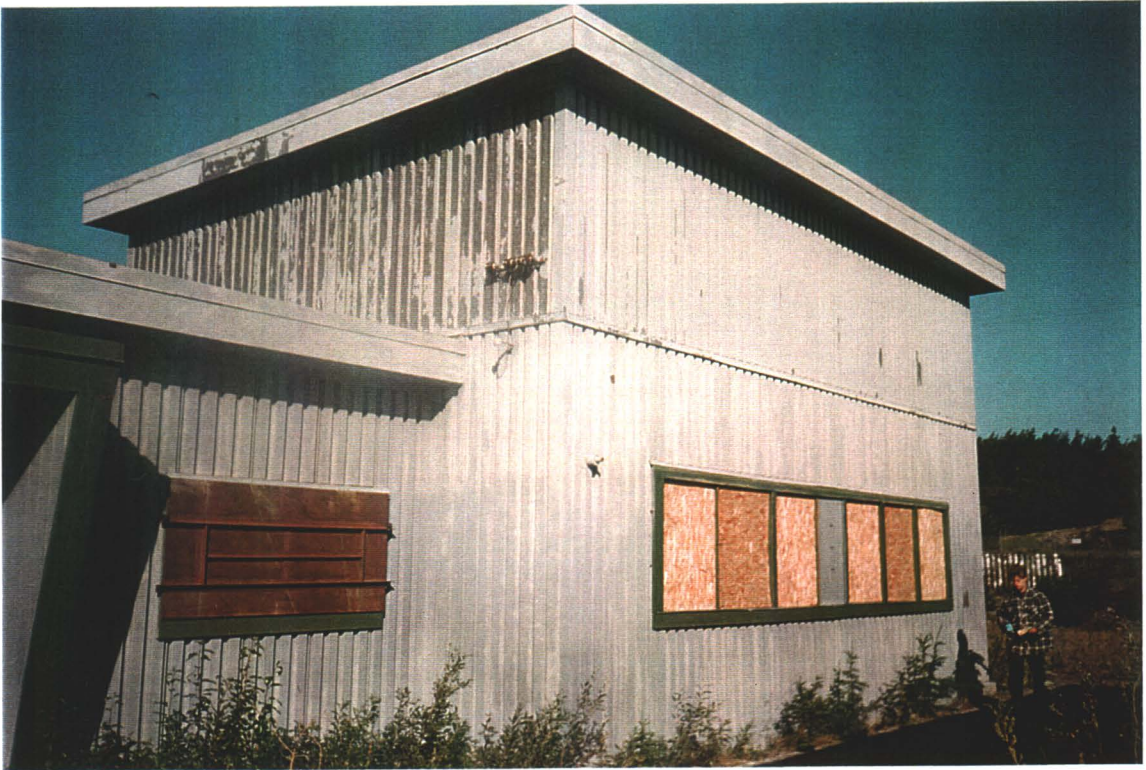
Air Intake Building. Empty, no environmental concern.



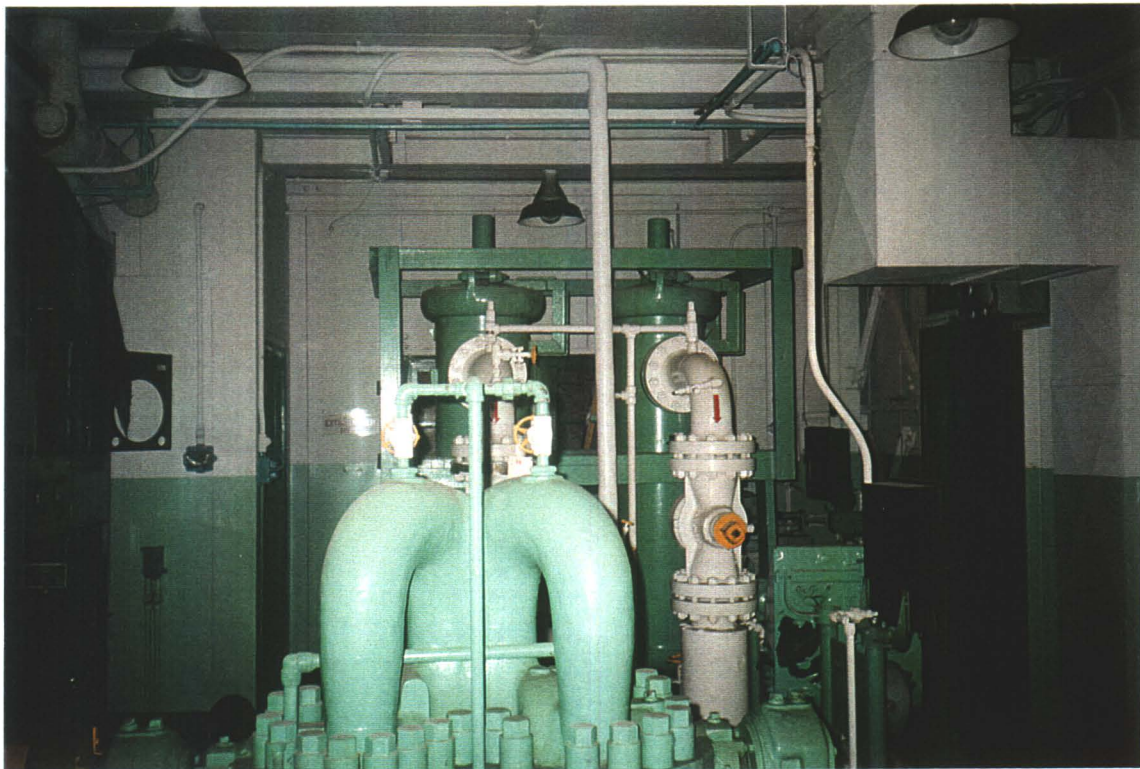
Compressor Building (high building), from front.



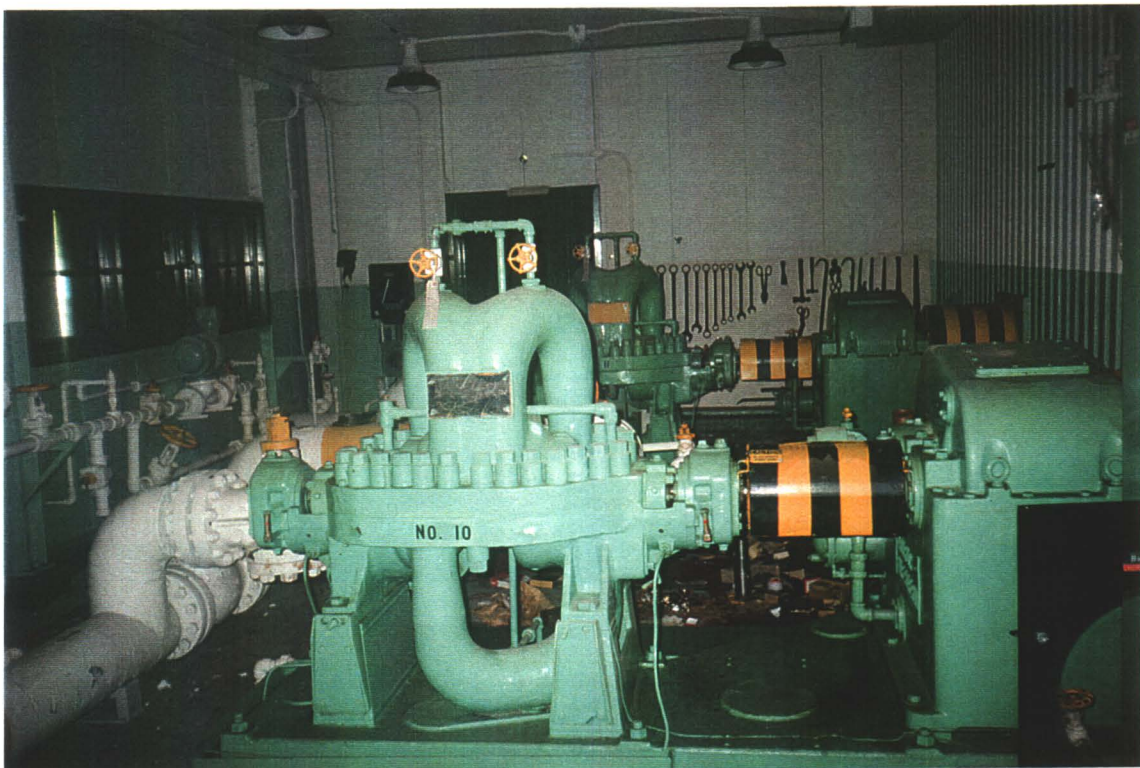
Compressor Building (high building), from back.



Compressor Building (high building), from side.



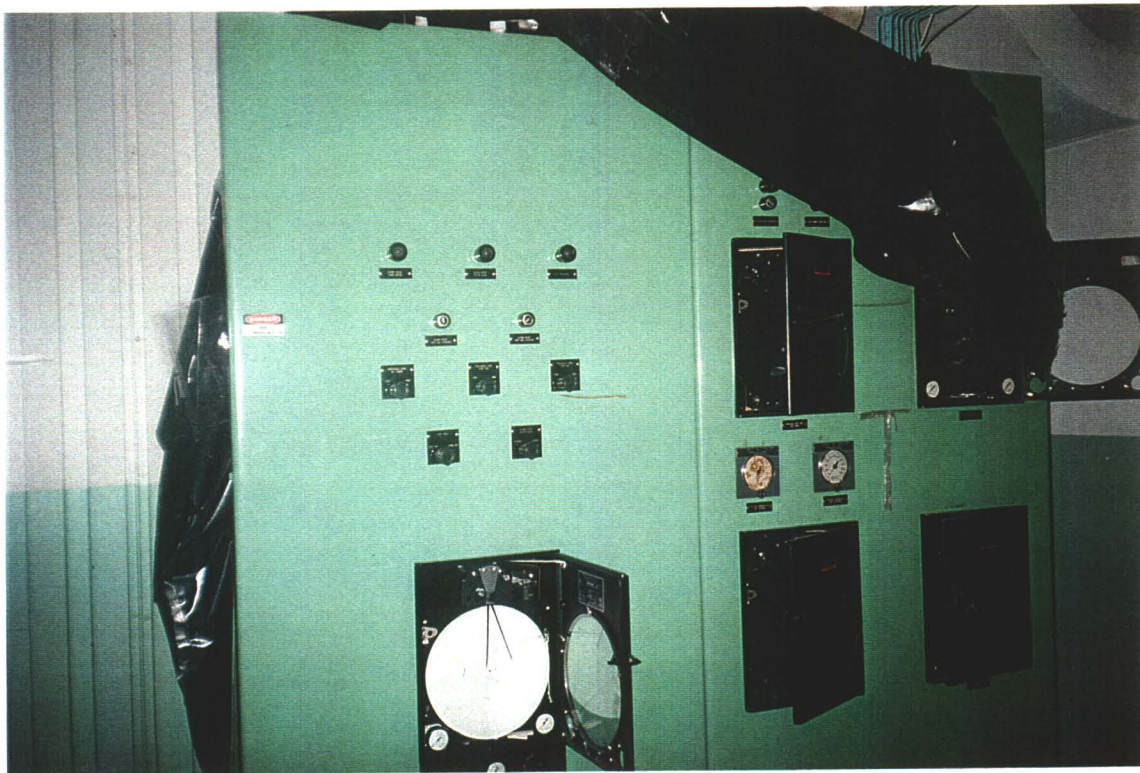
Compressor Building, Compressor Room.  
All green and white lead-based paint is common to all equipment components.



Compressor Building, Compressor Room. Pump unit.



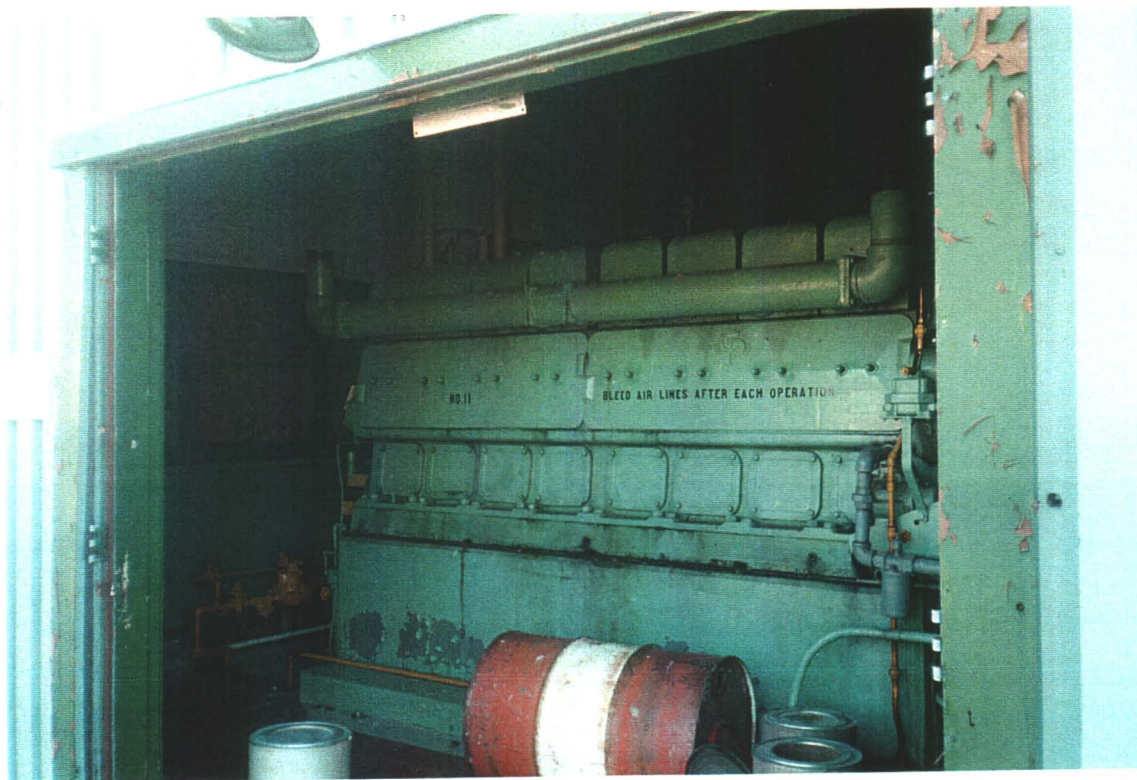
Compressor Building, Compressor Room.  
Debris on floor indicating vandalism



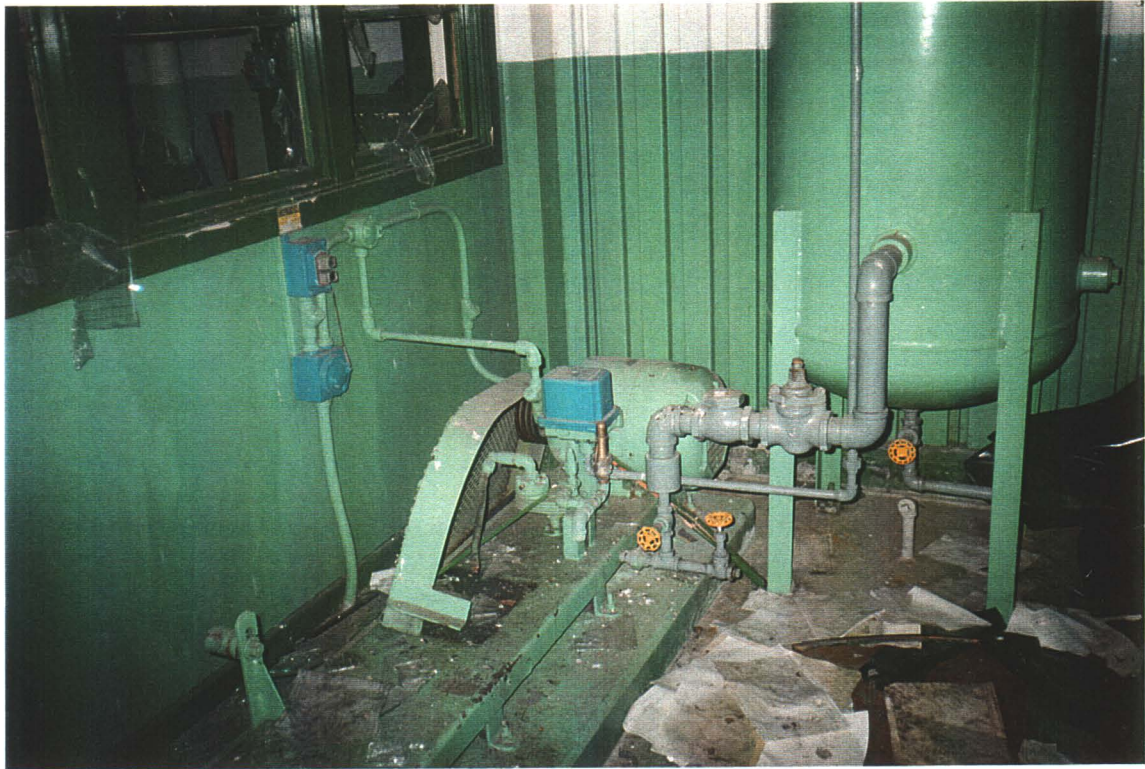
Compressor Building. Control panel, may contain mercury switches.



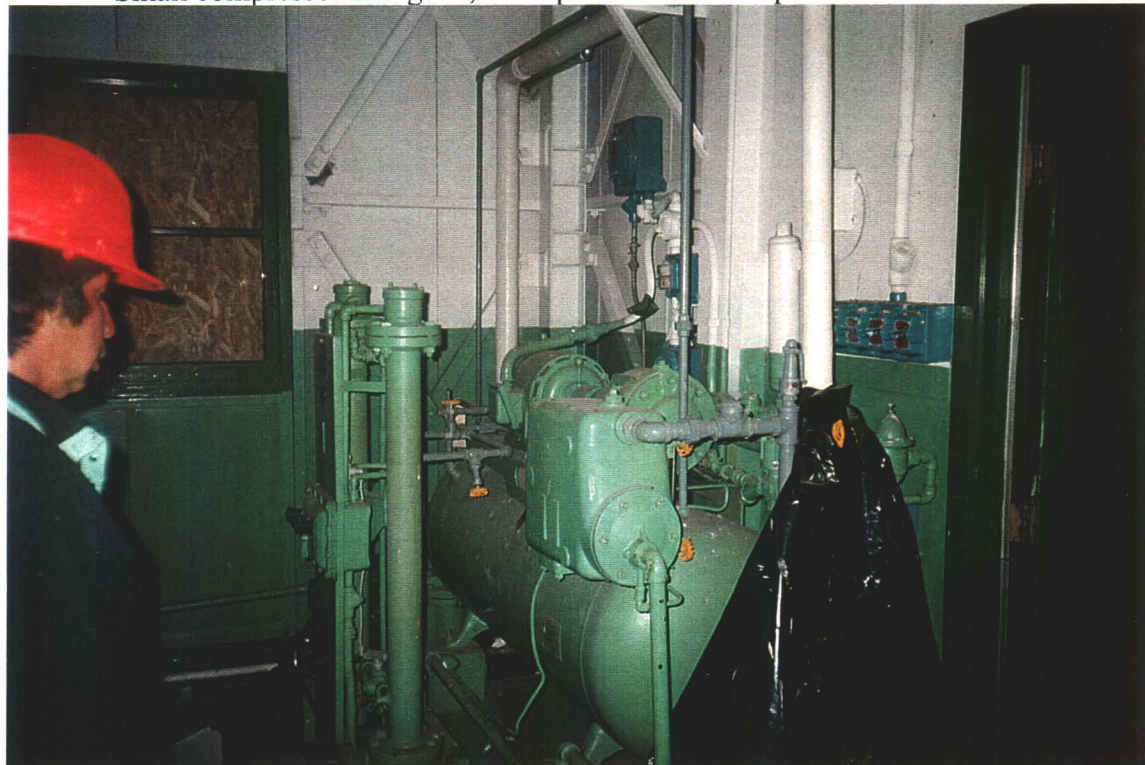
Compressor Building. Doorway to outside. Note that it has been kicked in, and that friable asbestos contained inside is now contaminating the Compressor Room



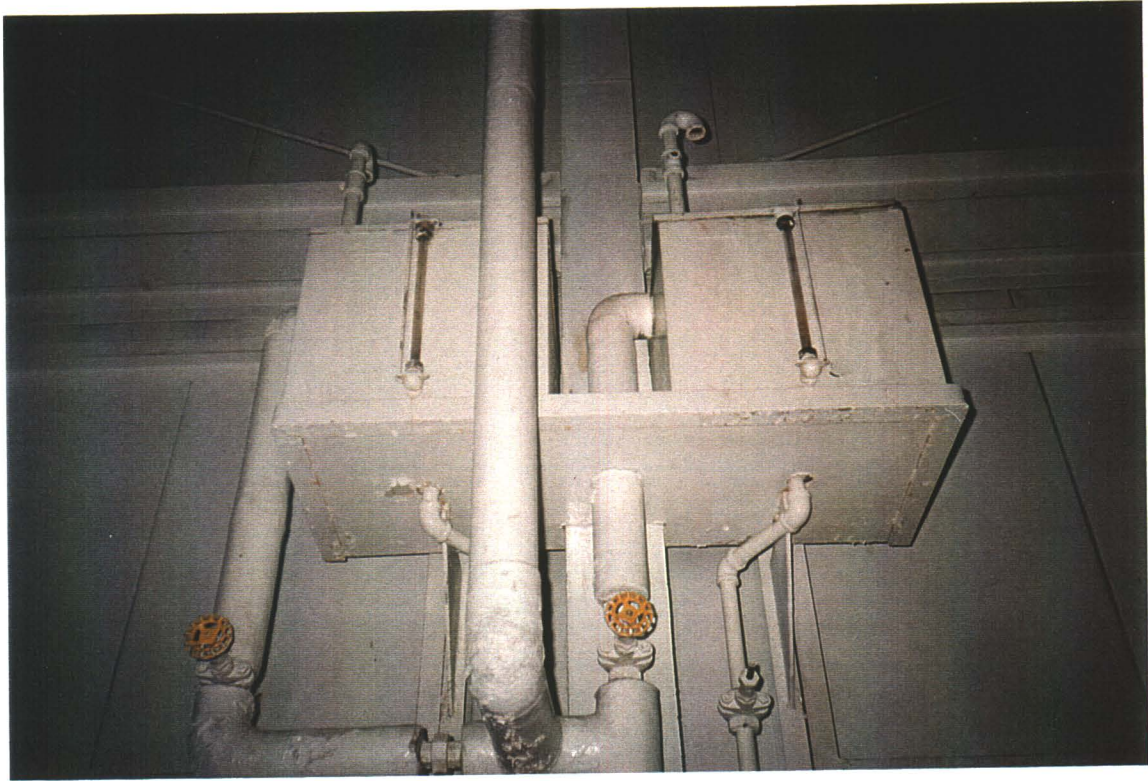
Compressor Building. Engine Room. One of two engine units to power compression pumps. Engine completely mothballed, including drained of antifreeze.



Compressor Building, Engine Room.  
Small compressor unit gone, but 3 phase motor and pressure tank remain.



Compressor Building, Engine Room.  
Old compressor unit, de-pressurized. No environmental concern.



Compressor Building, Engine Room. Raised fluid additive tanks (empty), and asbestos knuckles on insulated pipe, common throughout.



Compressor Building, Office Room.  
Ceiling material is asbestos free, whereas floor tile contains asbestos.



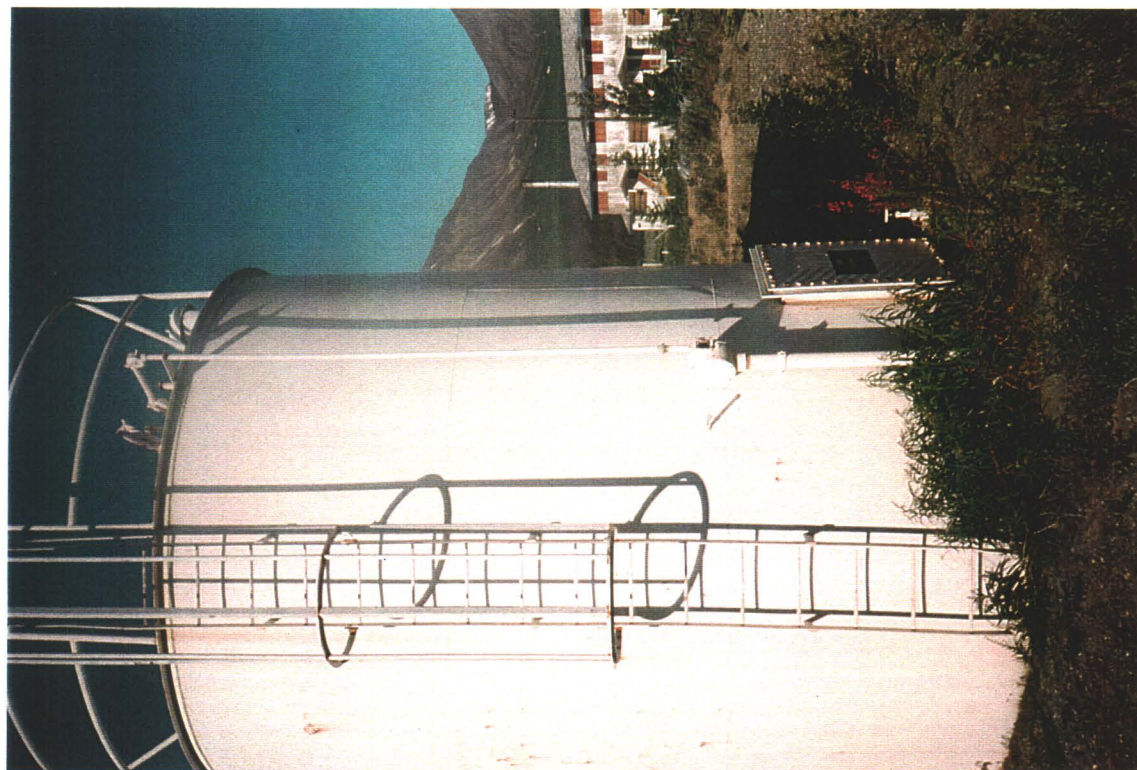
Quanset hut exterior.



Interior of Quanset. Extensive vandalism. No asbestos.



Bulk fuel storage tank, 1 of 2. Empty. Bullet hole present.



Bulk fuel storage tank, 2 of 2. Empty. Bullet holes present.



Pump island for vehicle fuel. Includes concrete underground storage tank(s) for vehicle fuel.



Residual product in tank.



Garbage incinerator ceramic liner.



Sewage system vault array.



Single Residence, exterior front.



Multi-family Residence, exterior view.



Boiler Room at left side of Multi-family Residence. Steam lines lead to this residence and facility buildings. Wooden siding, coated with lead-based paint.



Multi-family Dwelling, Boiler Room. Boiler and tanks present. Friable asbestos present in abundance due to vandalism.



Multi-family Dwelling, Boiler Room tank is missing.



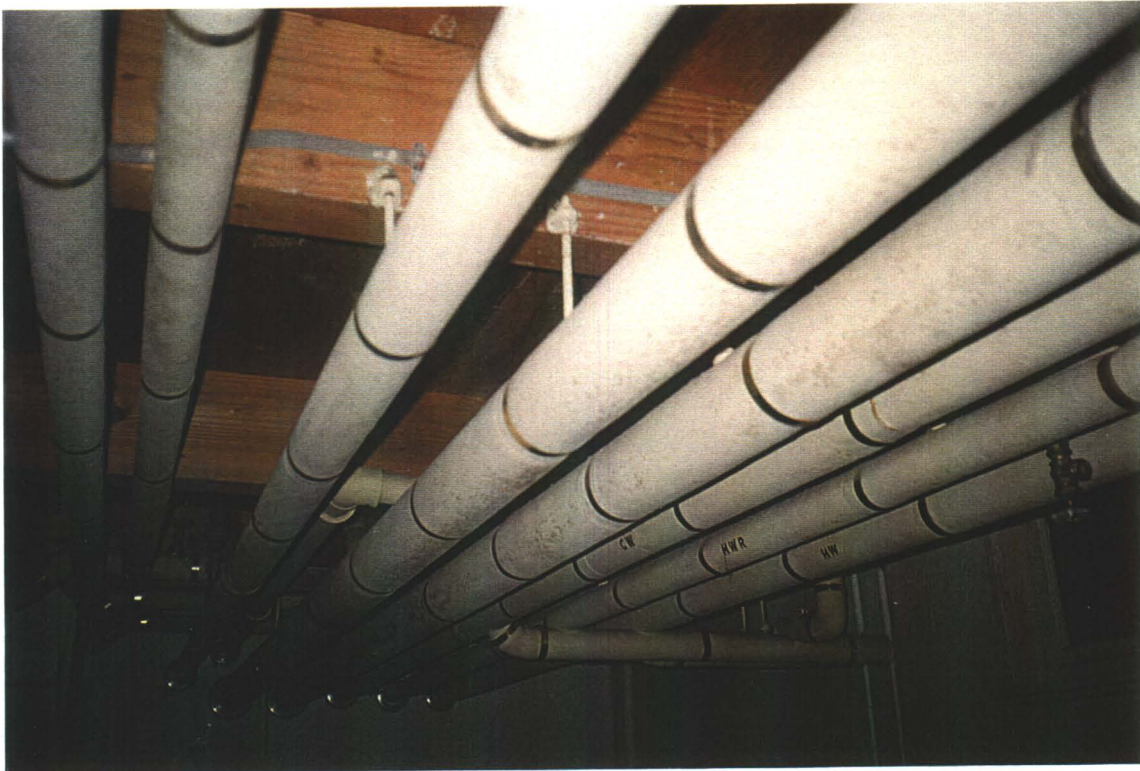
Multi-family Dwelling, exterior AST.



Multi-family Dwelling, interior stairway to second floor. No asbestos present, except for knuckles in heating system pipes, which are inside walls, and 9" x 9" floor tiles.



Multi-family Dwelling. Note asbestos knuckles in exposed heating pipes behind walls.



Multi-family Dwelling, basement. Note asbestos-containing materials (knuckles only) in pipe insulation.



Multi-family Dwelling, basement. Note heavy beam floor system.