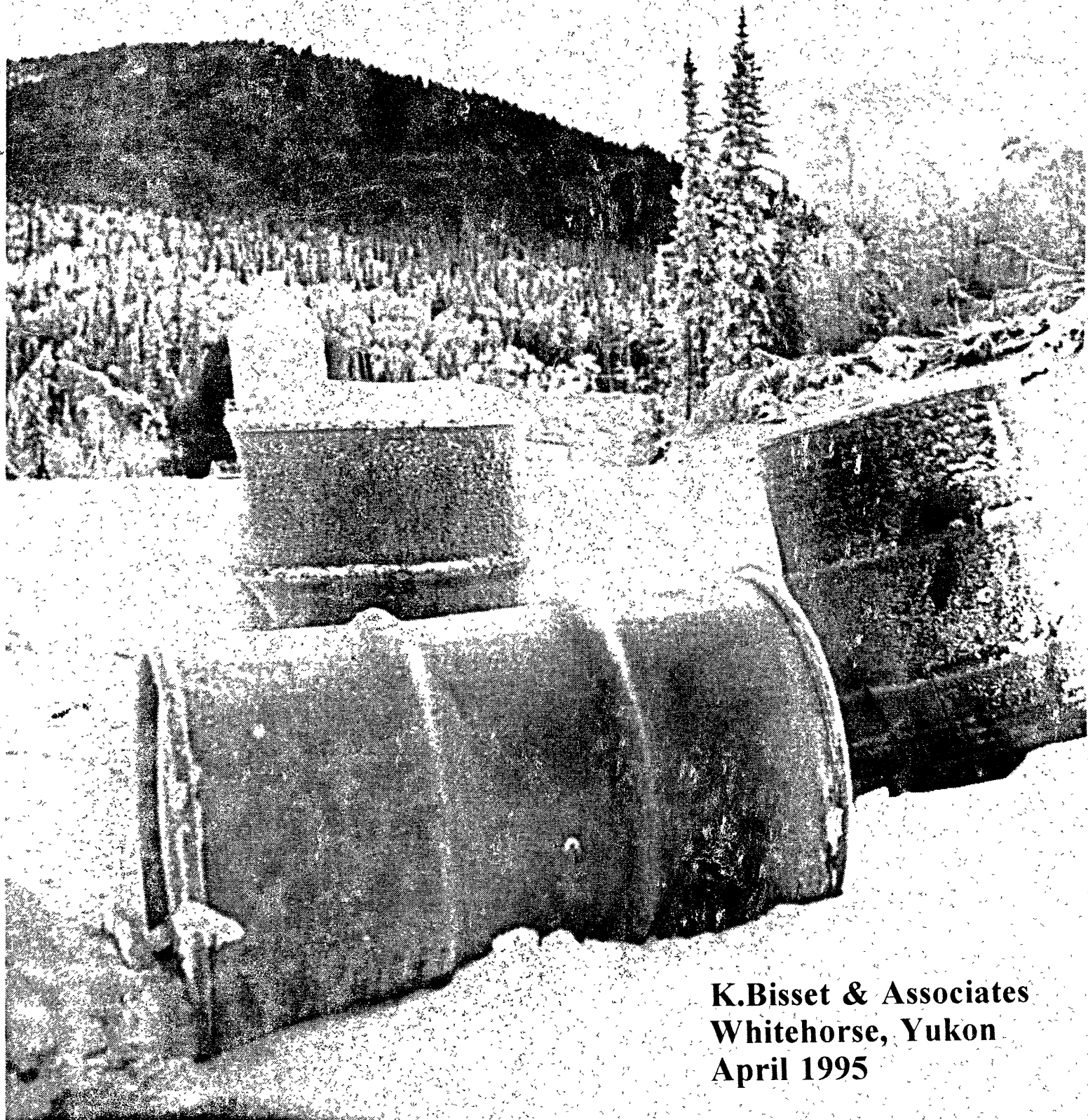


RESEARCH OF FORMER MILITARY SITES AND ACTIVITIES IN THE YUKON



K.Bisset & Associates
Whitehorse, Yukon
April 1995

EVEN BATTERED oil drums, prosaic and colorless, blend with nature's wonderland to provide a scene of enchantment and

Arctic splendor. Scene above was photographed, just off Highway, 50 miles south of Northway.

ACKNOWLEDGEMENTS

The project team would like to thank all the people who provided their time and talked to us about their personal stories and activities throughout the Yukon. The information gathered was greatly improved by your assistance.

Also, thanks to the people in the private sector and government who provided valuable archival information and added their personal knowledge.

Project Team

Project Manager

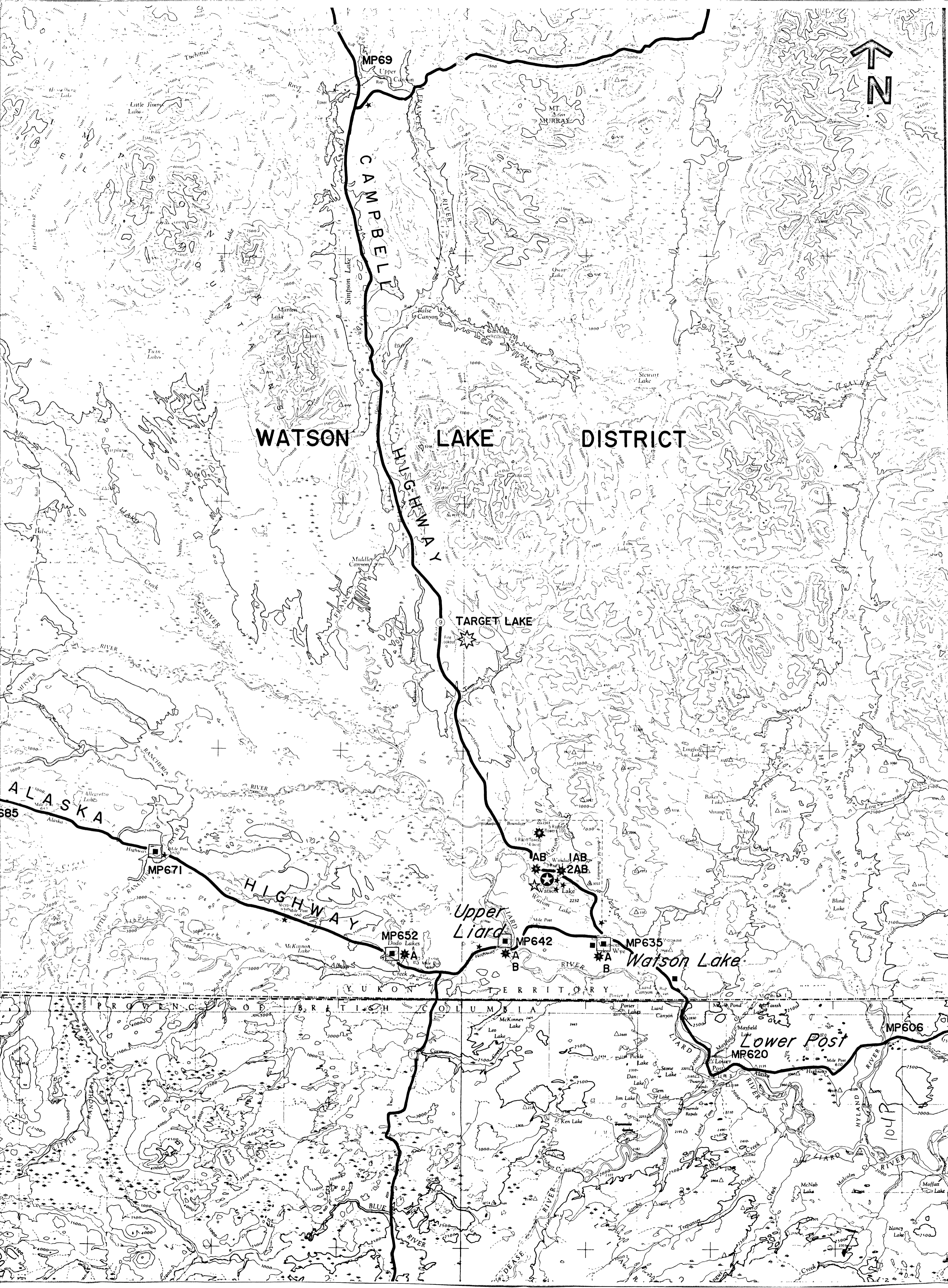
***Kathy Bisset, B.Sc., P.Ag
K.Bisset & Associates
Box 4793, Whitehorse, Yukon
Y1A 4N6***

Project Assistant

Jan Stensson Fozard, B.Env. Studies

LIST OF MAPS

Map No.	District	NTS Map No.
Map 1	Watson Lake	105A/104P
Map 2	Watson Lake/Teslin	105B/1040
Map 3	Teslin	105C/104N
Map 4	Tagish/Laberge	105D
Map 5	Laberge	105E
Map 6	Laberge/Haines Junction	115H
Map 7	Haines Junction/Laberge/Tagish	115A
Map 8	Tatshenshini River, B.C.	114P
Map 9	Haines Junction/Beaver Creek	115F&G/115B&C
Map 10	Beaver Creek	115J&K
Map 11	Ross River/Teslin	105F
Map 12	Ross River	105K
Map 13	Ross River	105J
Map 14	Ross River	105O/105P



WATSON LAKE 105A
 DEASE RIVER 104P

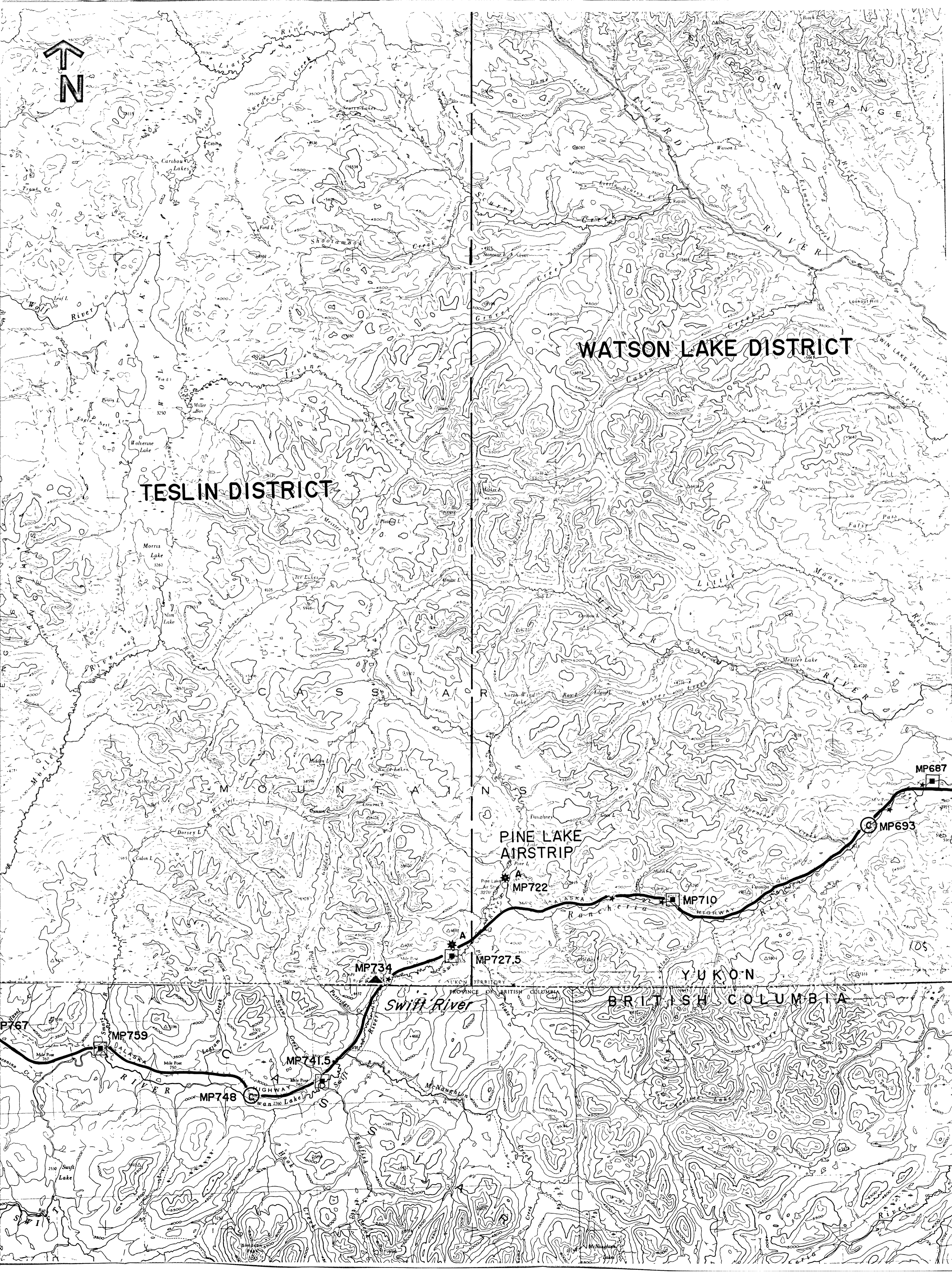
LEGEND :

- ⊙ Northwest Staging Route Airports
- ☆ Radio Range Stations - NWSR
- U.S. Army Construction Camps (Alaska Hwy. & Canal Pipeline)
- ◻ Pvt. Contractor Construction Camp (Alaska Hwy. & Canal Pipeline)
- ▲ Highway Maintenance Camps
- ▲ U.S. Army Relay Stations
- Sawmills
- ⊙ Pump Station - Canal
- ⊙ Pump Station - Haines/Fairbanks
- ☆ Military activity
- ☆ Dump sites
- ☆ A Archives
- ☆ B Anecdotal
- ★ RMO Waste Management Sites

**RESEARCH OF FORMER
 MILITARY SITES AND
 ACTIVITIES
 IN THE YUKON**

K. Bisset & Associates,
 Whitehorse, Yukon

Base maps - N.T.S. 1 : 250,000



WOLF LAKE 105B
 JENNINGS RIVER 1040

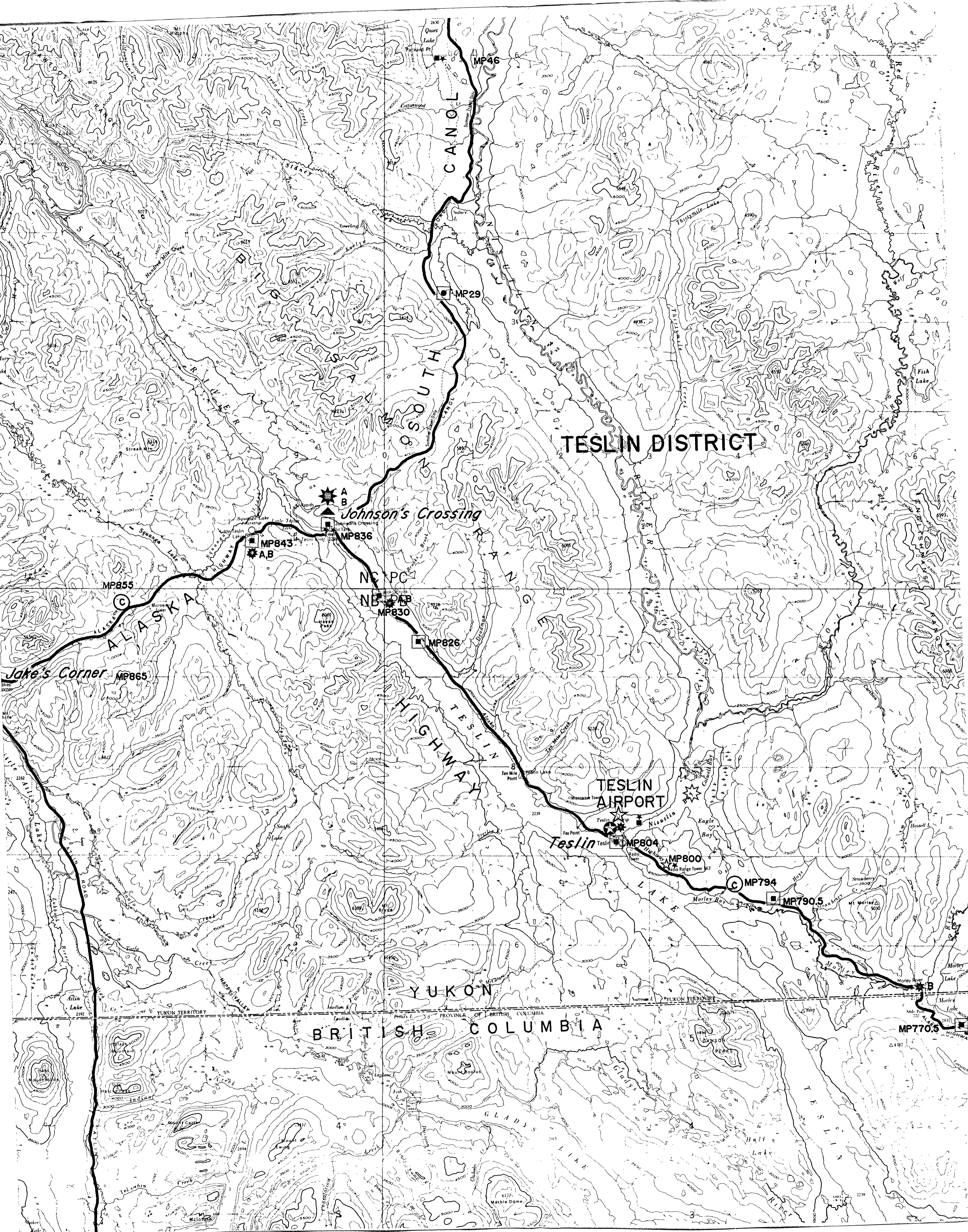
LEGEND :

- ✪ Northwest Staging Route Airports
- ☆ Radio Range Stations - NWSR
- ▣ U.S. Army Construction Camps (Alaska Hwy. & Canol Pipeline)
- ◻ Pvt. Contractor Construction Camp (Alaska Hwy. & Canol Pipeline)
- ▣ Highway Maintenance Camps
- ▲ U.S. Army Relay Stations
- ▣ Sawmills
- ⊙ Pump Station - Canol
- ⊙ Pump Station - Haines/Fairbanks
- ☆ Military activity
- ☆ Dump sites
- A Archives
- B Anecdotal
- ★ RMO Waste Management Sites

**RESEARCH OF FORMER
 MILITARY SITES AND
 ACTIVITIES
 IN THE YUKON**

K. Bisset & Associates,
 Whitehorse, Yukon

Base maps - N.T.S. 1 : 250,000



TESLIN
ATLIN

105C
104N

LEGEND :

- ⊙ Northwest Staging Route Airports
- ☆ Radio Range Stations - NWSR
- U.S. Army Construction Camps (Alaska Hwy. & Canol Pipeline)
- ◻ Pvt. Contractor Construction Camp (Alaska Hwy. & Canol Pipeline)
- ▲ Highway Maintenance Camps
- △ U.S. Army Relay Stations
- Sawmills
- ⊙ Pump Station - Canol
- ⊙ Pump Station - Haines/Fairbanks
- ☆ Military activity
- ☆ Dump sites
- A Archives
- B Anecdotal
- ★ RMO Waste Management Sites

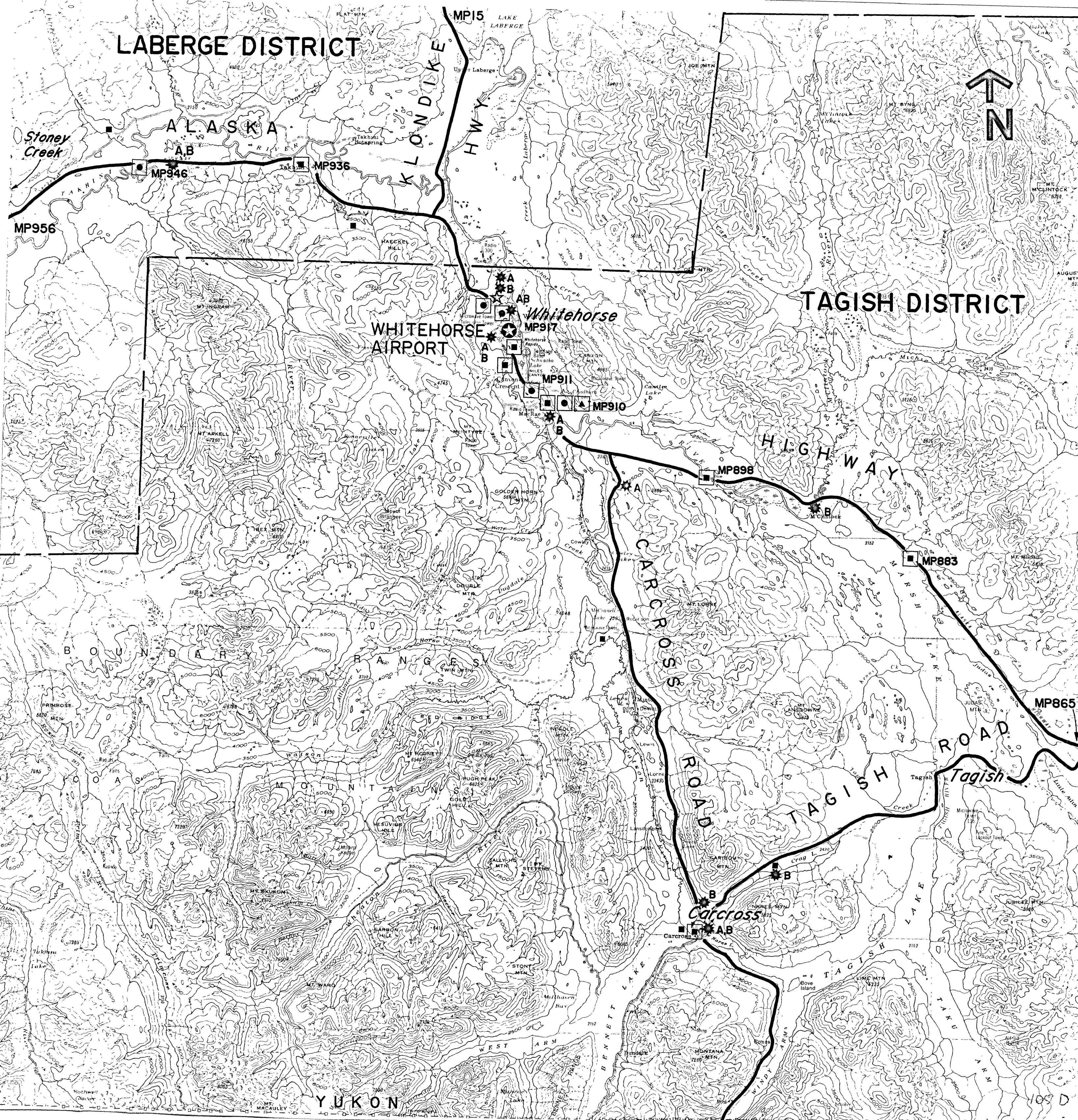
**RESEARCH OF FORMER
MILITARY SITES AND
ACTIVITIES
IN THE YUKON**

K. Bisset & Associates,
Whitehorse, Yukon

Base maps - N.T.S. 1 : 250,000

LABERGE DISTRICT

WHITEHORSE 105D



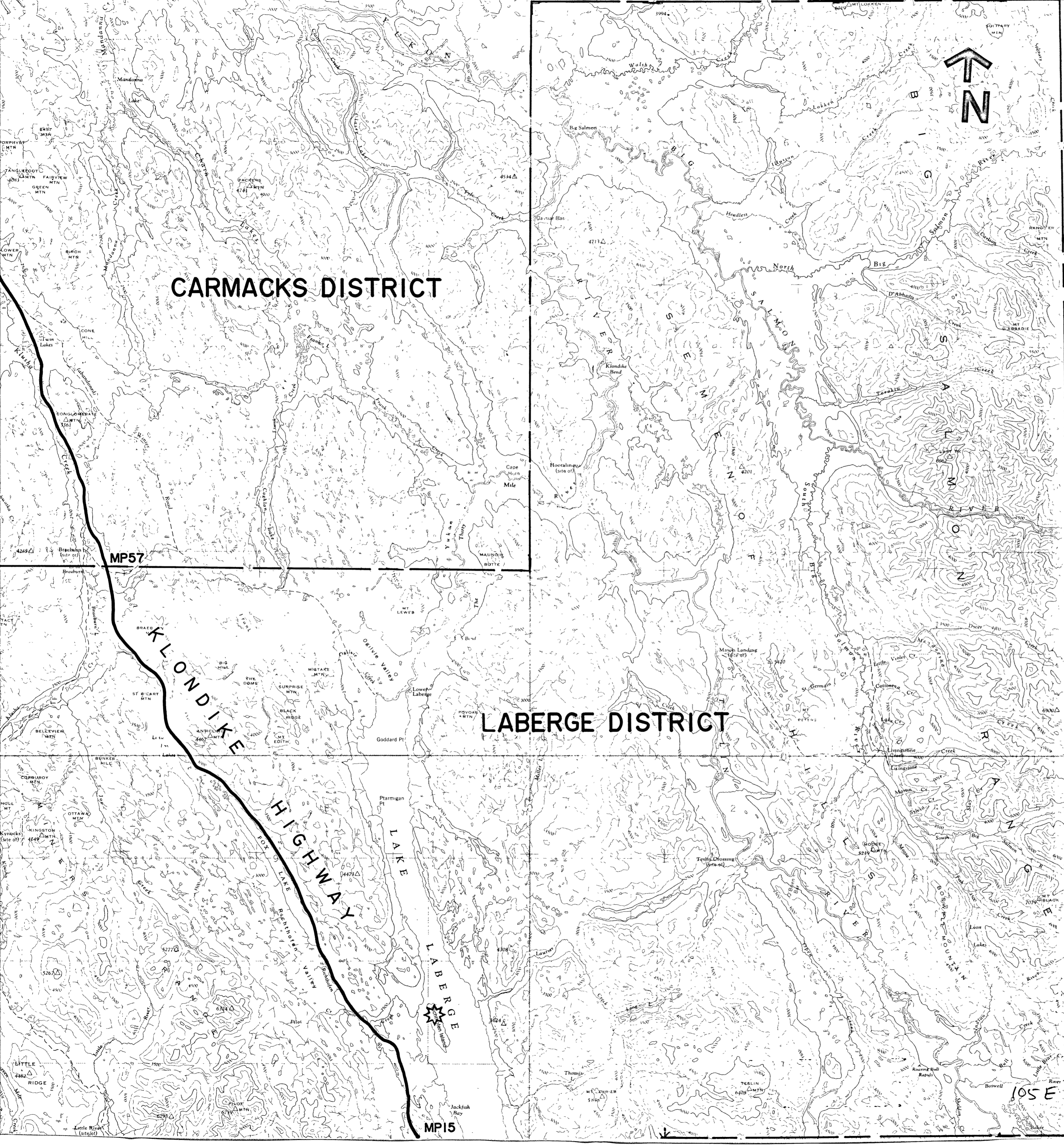
LEGEND :

- ✪ Northwest Staging Route Airports
- ☆ Radio Range Stations - NWSR
- ▣ U.S. Army Construction Camps (Alaska Hwy. & Canol Pipeline)
- ◻ Pvt. Contractor Construction Camp (Alaska Hwy. & Canol Pipeline)
- ▴ Highway Maintenance Camps
- ▲ U.S. Army Relay Stations
- Sawmills
- ⊙ Pump Station - Canol
- ⊕ Pump Station - Haines/Fairbanks
- ☆ Military activity
- ⊙ Dump sites
 - A Archives
 - B Anecdotal

RESEARCH OF FORMER MILITARY SITES AND ACTIVITIES IN THE YUKON

K. Bisset & Associates,
Whitehorse, Yukon

Base maps - N.T.S. 1 : 250,000



LABERGE

105E

LEGEND :

- ✪ Northwest Staging Route Airports
- ☆ Radio Range Stations - NWSR
- U.S. Army Construction Camps (Alaska Hwy. & Canol Pipeline)
- ◻ Pvt. Contractor Construction Camp (Alaska Hwy. & Canol Pipeline)
- ▲ Highway Maintenance Camps
- ▲ U.S. Army Relay Stations
- Sawmills
- ⊙ Pump Station - Canol
- ⊙ Pump Station - Haines/Fairbanks
- ☆ Military activity
- ☆ Dump sites
 - A Archives
 - B Anecdotal

RESEARCH OF FORMER MILITARY SITES AND ACTIVITIES IN THE YUKON

K. Bisset & Associates,
Whitehorse, Yukon

Base maps - N.T.S. 1 : 250,000

MAP NO. 5

AISHIHIK LAKE

115H

CARMACKS DISTRICT

LEGEND :

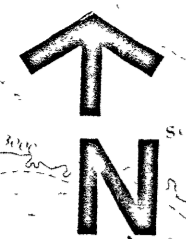
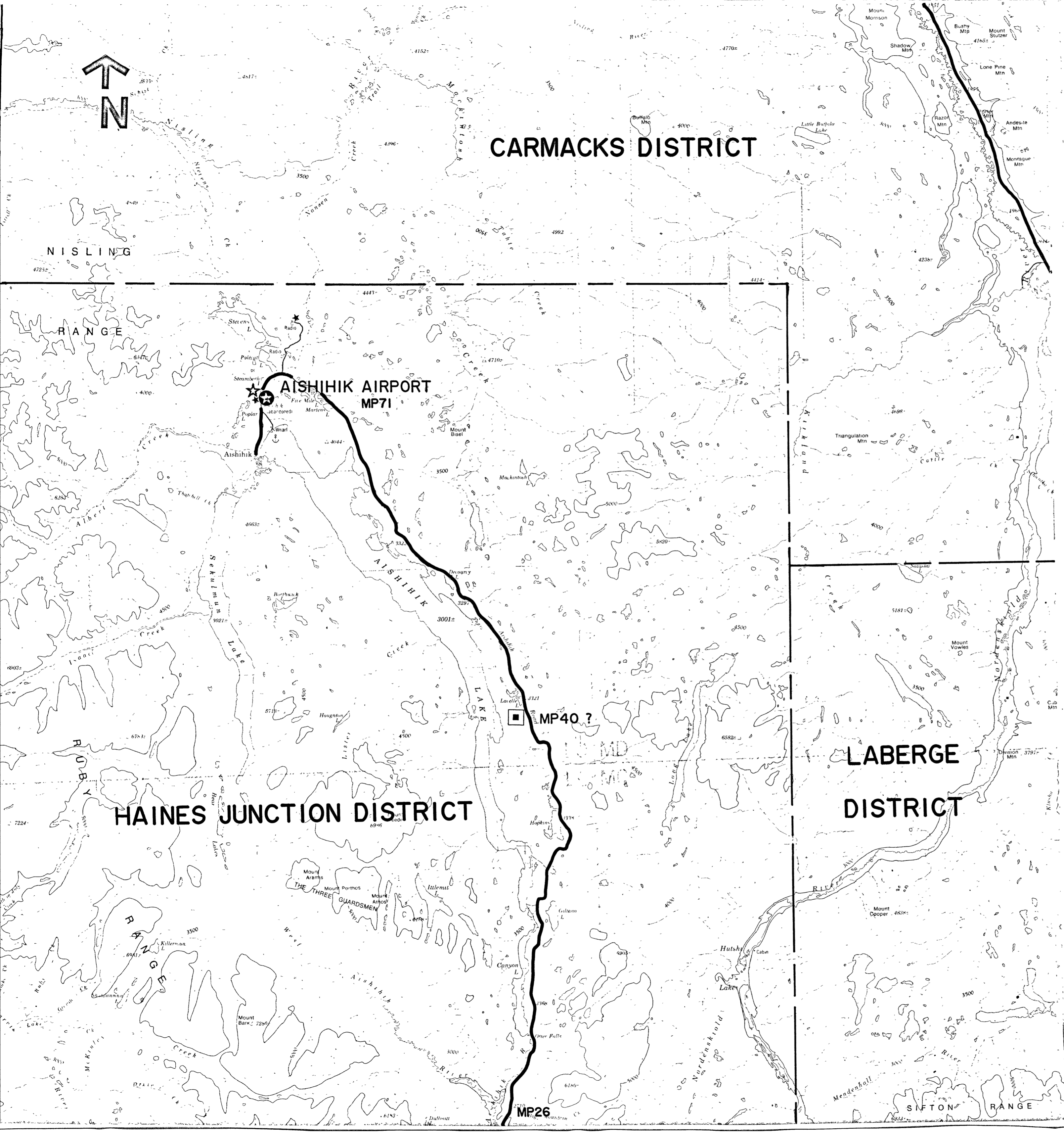
- ✪ Northwest Staging Route Airports
- ☆ Radio Range Stations - NWSR
- U.S. Army Construction Camps (Alaska Hwy. & Canol Pipeline)
- ◻ Pvt. Contractor Construction Camp (Alaska Hwy. & Canol Pipeline)
- ▲ Highway Maintenance Camps
- ▲ U.S. Army Relay Stations
- Sawmills
- ⊙ Pump Station - Canol
- ⊙ Pump Station - Haines/Fairbanks
- ☆ Military activity
- ☆ Dump sites
 - A Archives
 - B Anecdotal
- ★ RMO Waste Management Sites

RESEARCH OF FORMER MILITARY SITES AND ACTIVITIES IN THE YUKON

K. Bisset & Associates,
Whitehorse, Yukon

Base maps - N.T.S. 1 : 250,000

MAP NO. 6



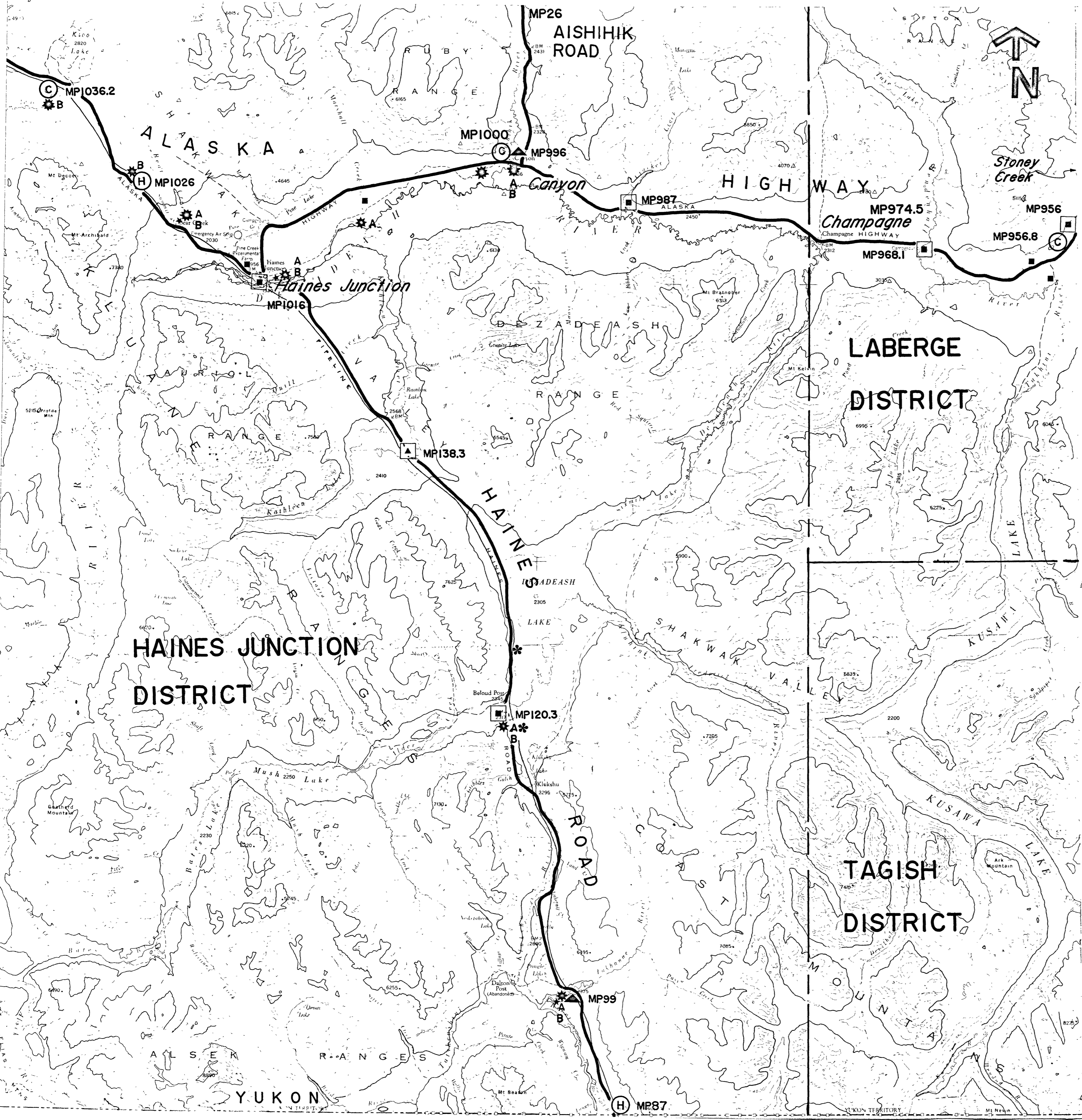
NISLING

RANGE

HAINES JUNCTION DISTRICT

LABERGE DISTRICT

SIFTON RANGE



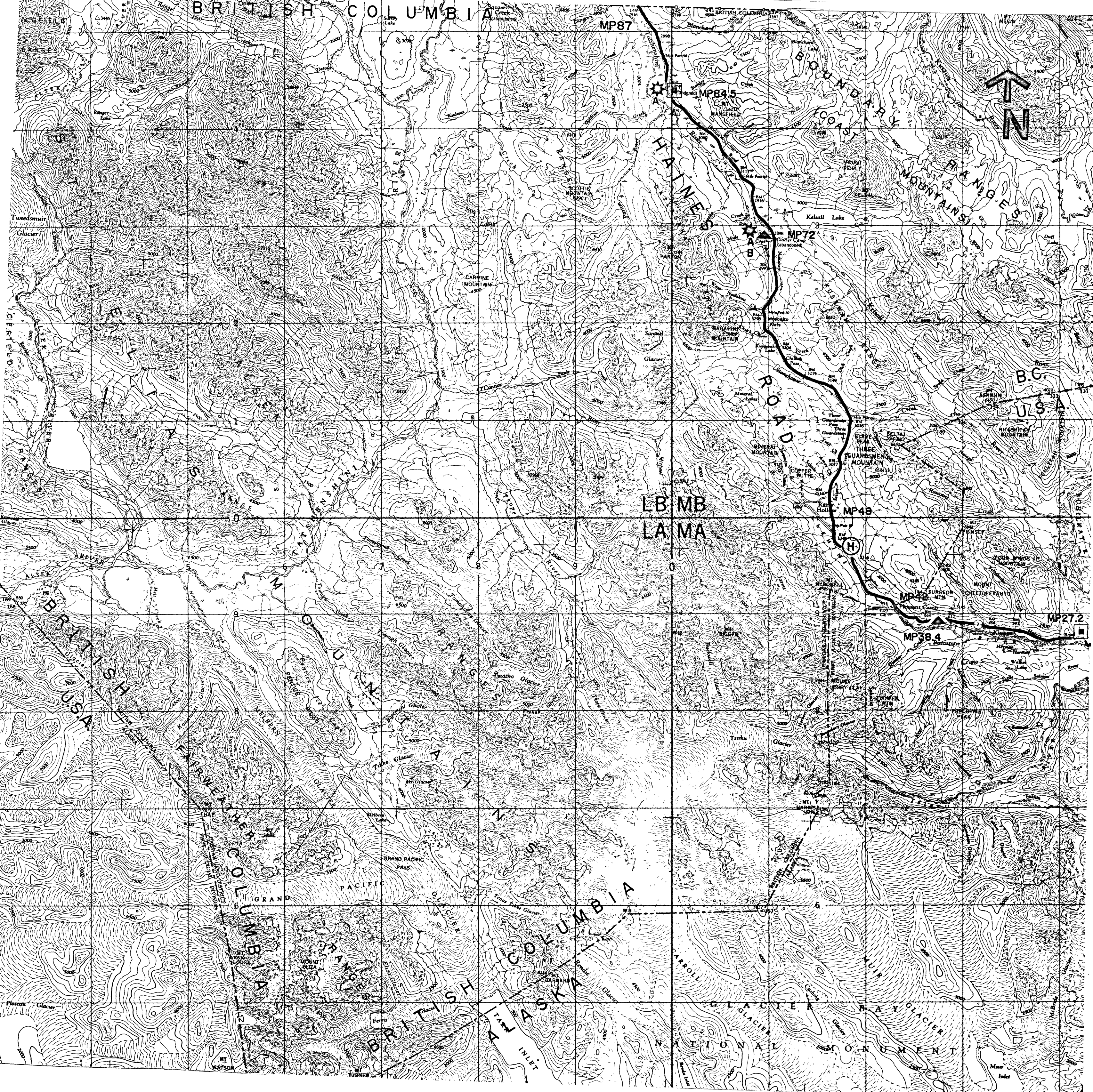
LEGEND :

- ★ North West Staging Route Airports
- ☆ Radio Range Stations - NWSR
- U.S. Army Construction Camps (Alaska Hwy. & Canol Pipeline)
- ◻ Pvt. Contractor Construction Camp (Alaska Hwy. & Canol Pipeline)
- ▲ Highway Maintenance Camps
- △ U.S. Army Relay Stations
- Sawmills
- ⊙ Pump Station - Canol
- ⊙ Pump Station - Haines/Fairbanks
- ☆ Military activity
 - A Archives
 - B Anecdotal
- ✿ Known oil spills
- ✱ RMO Waste Management Sites

RESEARCH OF FORMER MILITARY SITES AND ACTIVITIES IN THE YUKON

K. Bisset & Associates, Whitehorse, Yukon

Base maps - N.T.S. 1 : 250,000



TATSHENSHINI RIVER 114P

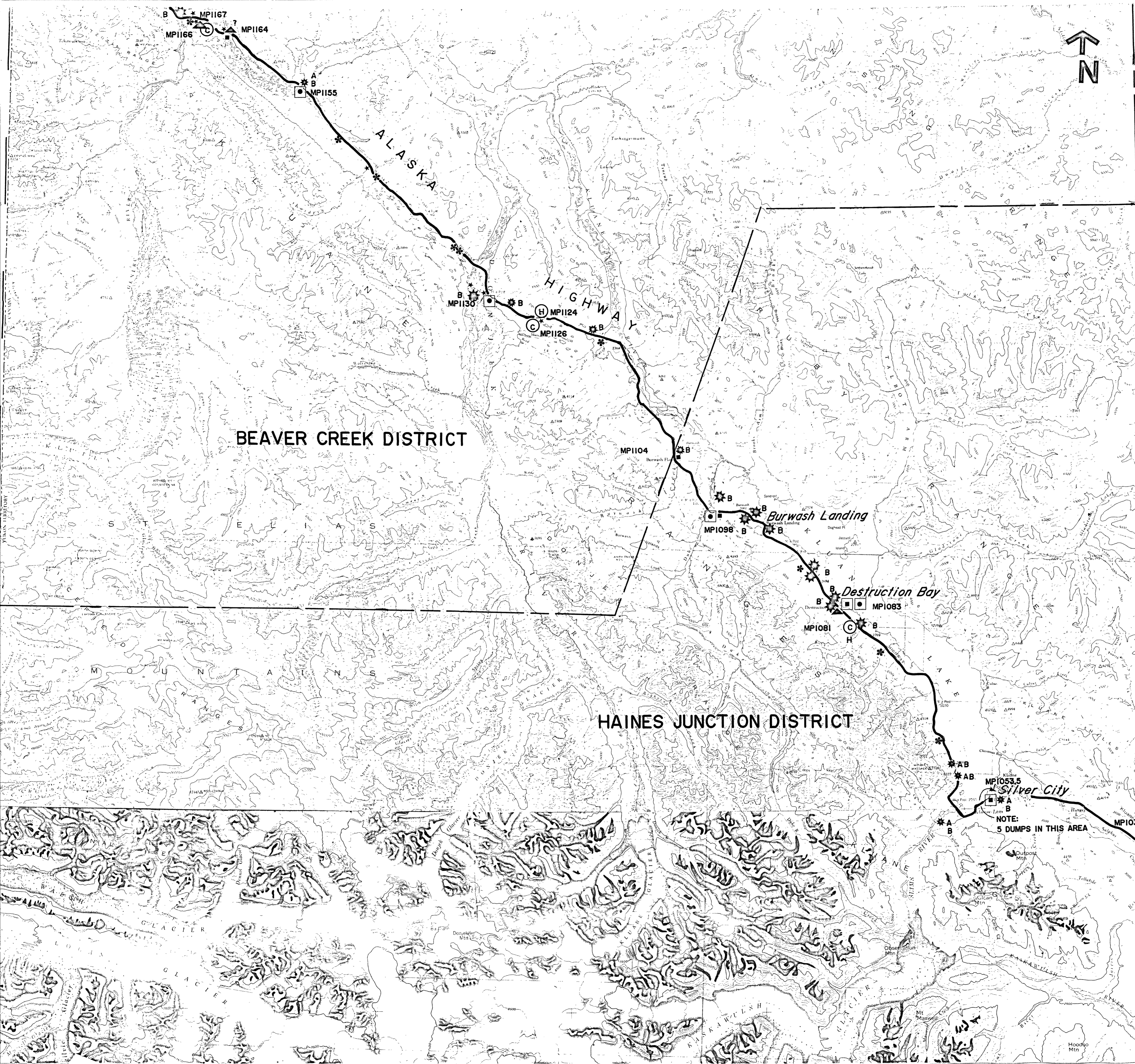
LEGEND :

- ⊙ Northwest Staging Route Airports
- ☆ Radio Range Stations - NWSR
- ▣ U.S. Army Construction Camps (Alaska Hwy. & Canol Pipeline)
- ◐ Pvt. Contractor Construction Camp (Alaska Hwy. & Canol Pipeline)
- ▴ Highway Maintenance Camps
- ▲ U.S. Army Relay Stations
- Sawmills
- ⊙ Pump Station - Canol
- ⊙ Pump Station - Haines/Fairbanks
- ☆ Military activity
- ☆ Dump sites
- A Archives
- B Anecdotal

RESEARCH OF FORMER MILITARY SITES AND ACTIVITIES IN THE YUKON

K. Bisset & Associates,
Whitehorse, Yukon

Base maps - N.T.S. 1 : 250,000



KLUANE LAKE I15F/G
 MT. ST. ELIAS I15B/C

LEGEND :

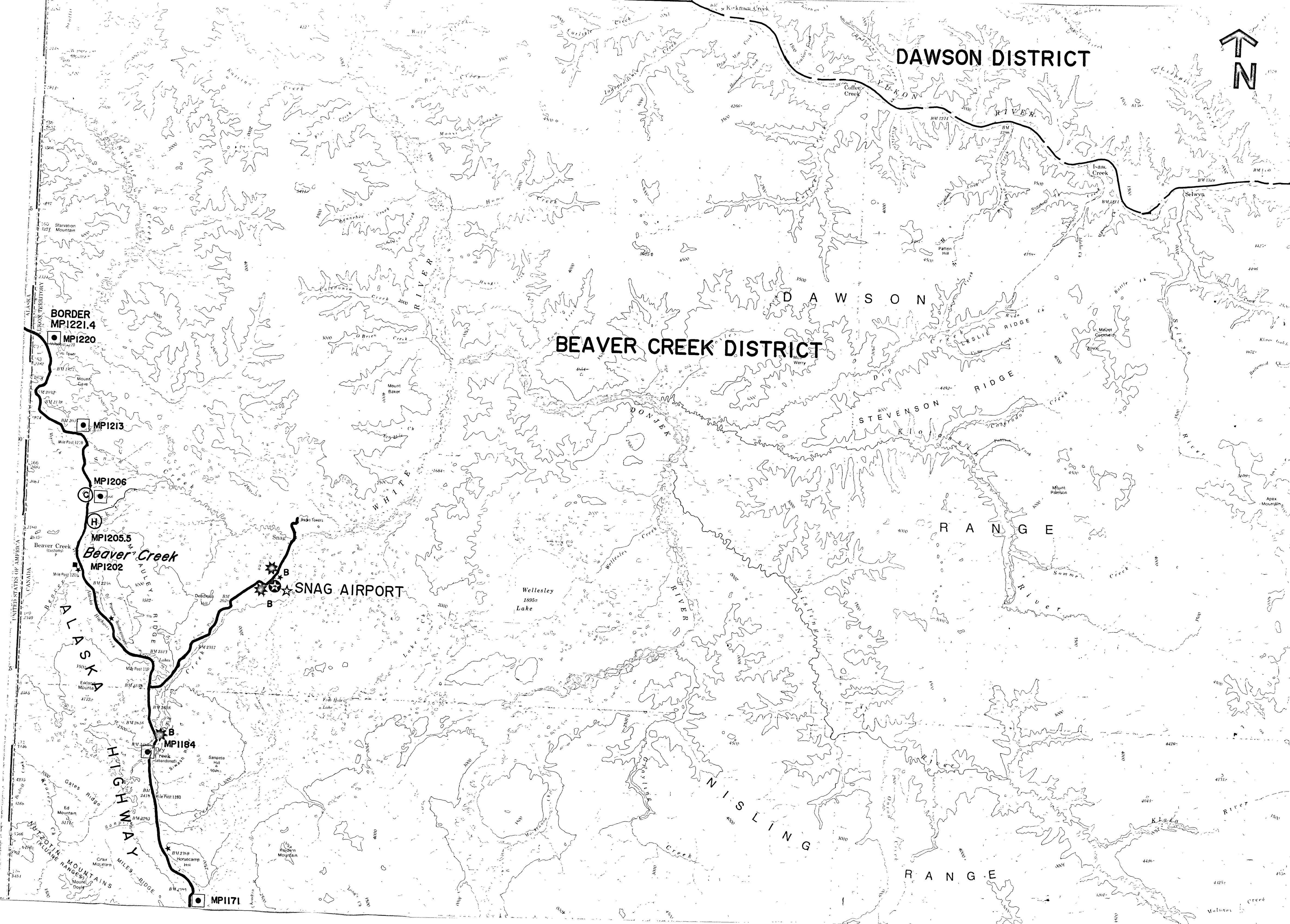
- ⊙ Northwest Staging Route Airports
- ☆ Radio Range Stations - NWSR
- ▣ U.S. Army Construction Camps (Alaska Hwy. & Canol Pipeline)
- ◻ Pvt. Contractor Construction Camp (Alaska Hwy. & Canol Pipeline)
- ▤ Highway Maintenance Camps
- ▲ U.S. Army Relay Stations
- ▣ Sawmills
- ⊙ Pump Station - Canol
- ⊙ Pump Station - Haines/Fairbanks
- ☆ Military activity
- ☆ Dump sites
- A Archives
- B Anecdotal
- * Known oil spills
- ★ RMO Waste Management Sites

NOTE:
 5 DUMPS IN THIS AREA

**RESEARCH OF FORMER
 MILITARY SITES AND
 ACTIVITIES
 IN THE YUKON**

K. Bisset & Associates,
 Whitehorse, Yukon

Base maps - N.T.S. 1 : 250,000



SNAG

115J/K

LEGEND :

- ✪ Northwest Staging Route Airports
- ☆ Radio Range Stations - NWSR
- U.S. Army Construction Camps (Alaska Hwy. & Canol Pipeline)
- ◻ Pvt. Contractor Construction Camp (Alaska Hwy. & Canol Pipeline)
- ▲ Highway Maintenance Camps
- ▲ U.S. Army Relay Stations
- Sawmills
- ⊙ Pump Station - Canol
- ⊙ Pump Station - Haines/Fairbanks
- ☆ Military activity
- ☆ Dump sites
- A Archives
- B Anecdotal
- ★ RMO Waste Management Sites

RESEARCH OF FORMER MILITARY SITES AND ACTIVITIES IN THE YUKON

K. Bisset & Associates,
Whitehorse, Yukon

Base maps - N.T.S. 1 : 250,000

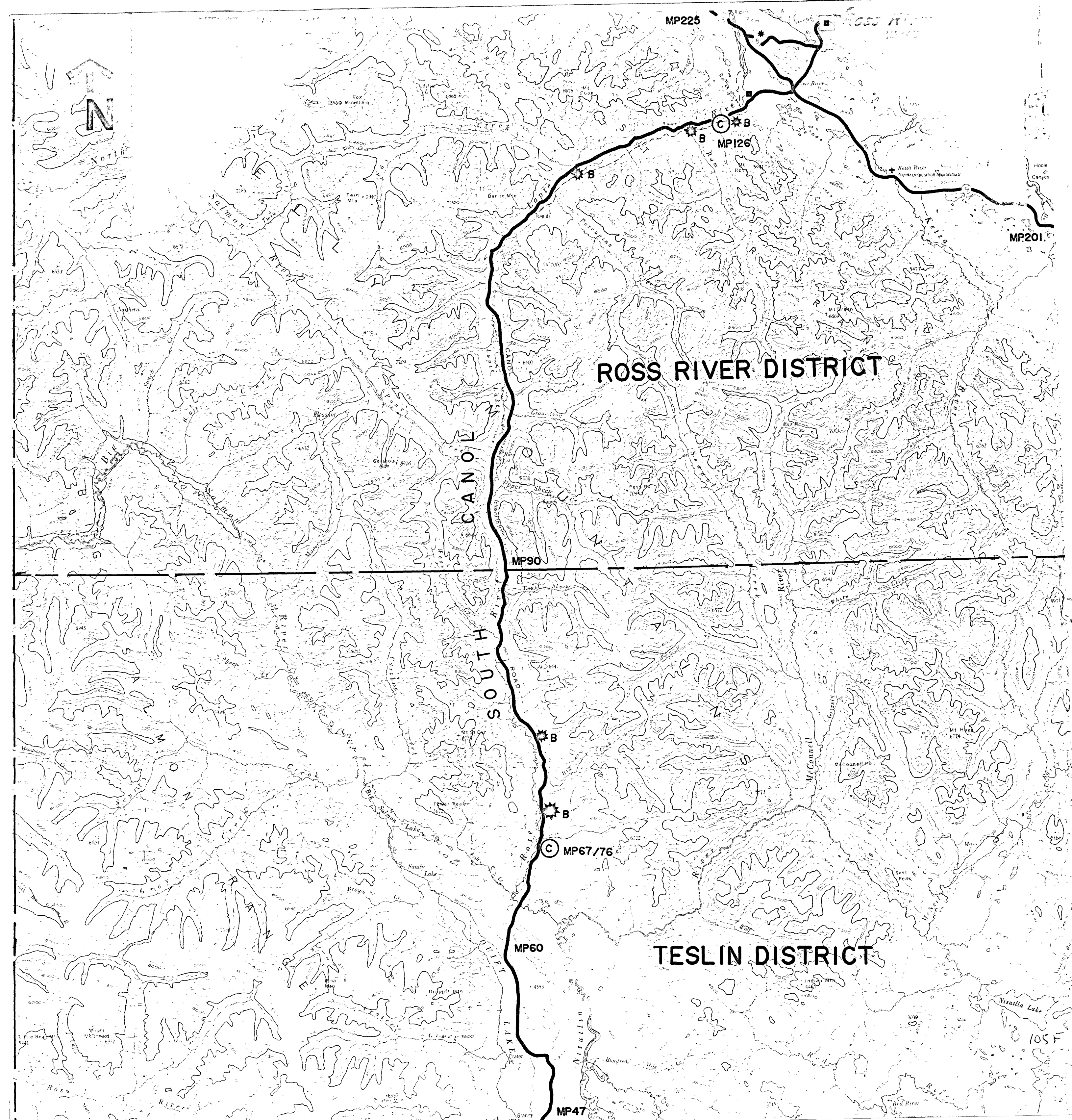
LEGEND :

- ✪ Northwest Staging Route Airports
- ☆ Radio Range Stations - NWSR
- U.S. Army Construction Camps (Alaska Hwy. & Canol Pipeline)
- ◻ Pvt. Contractor Construction Camp (Alaska Hwy. & Canol Pipeline)
- ▲ Highway Maintenance Camps
- ▲ U.S. Army Relay Stations
- Sawmills
- ⊙ Pump Station - Canol
- ⊙ Pump Station - Haines/Fairbanks
- ✪ Military activity
- ✪ Dump sites
 - A Archives
 - B Anecdotal

RESEARCH OF FORMER MILITARY SITES AND ACTIVITIES IN THE YUKON

K. Bisset & Associates,
Whitehorse, Yukon

Base maps - N.T.S. 1 : 250,000



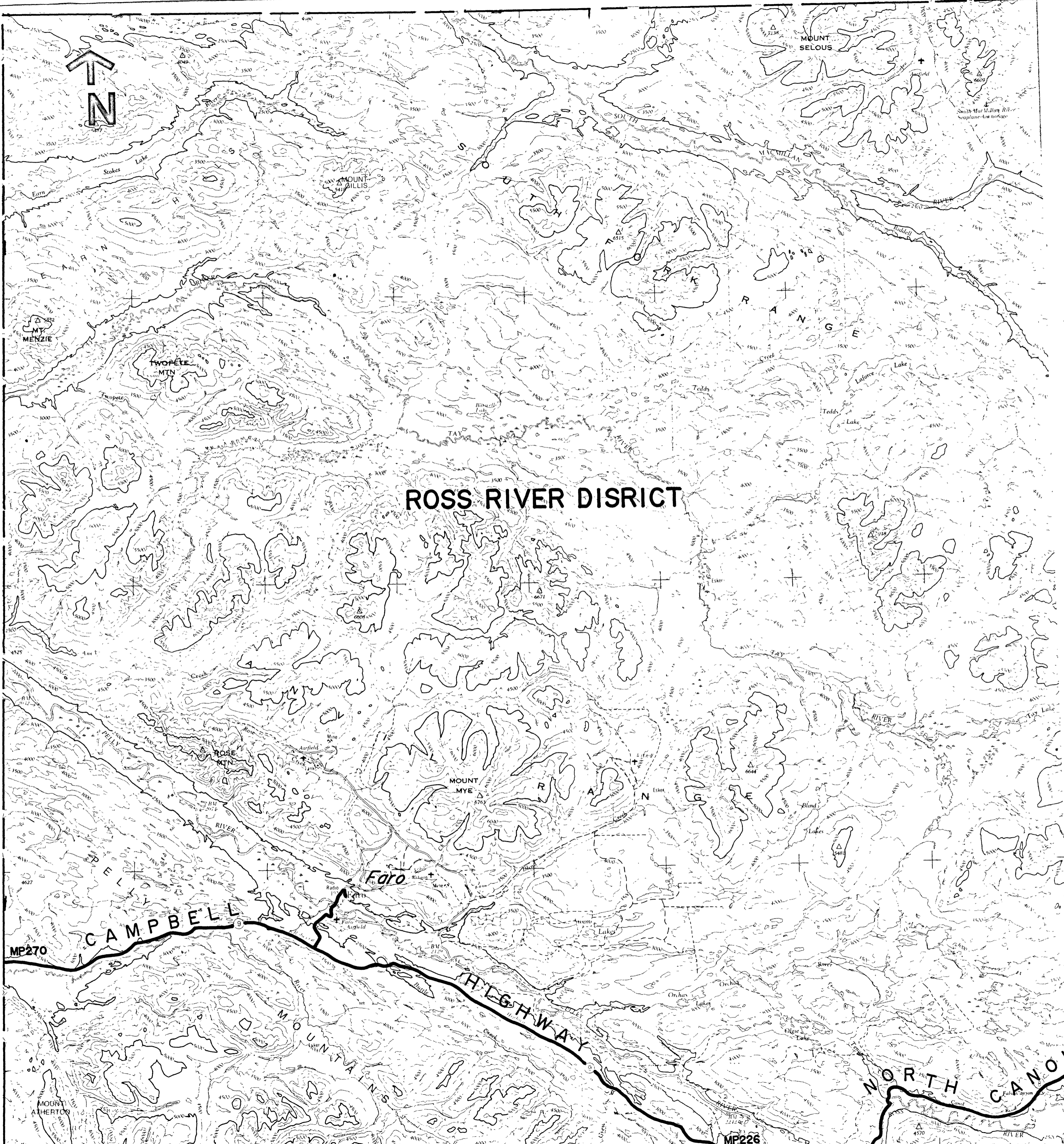
LEGEND :

- ✪ Northwest Staging Route Airports
- ☆ Radio Range Stations - NWSR
- ▣ U.S. Army Construction Camps (Alaska Hwy. & Canol Pipeline)
- ◻ Pvt. Contractor Construction Camp (Alaska Hwy. & Canol Pipeline)
- ▴ Highway Maintenance Camps
- ▲ U.S. Army Relay Stations
- Sawmills
- ⊙ Pump Station - Canol
- ⊙ Pump Station - Haines/Fairbanks
- ★ Military activity
- ★ Dump sites
- A Archives
- B Anecdotal

RESEARCH OF FORMER MILITARY SITES AND ACTIVITIES IN THE YUKON

K. Bisset & Associates,
Whitehorse, Yukon

Base maps - N.T.S. 1 : 250,000



ROSS RIVER DISTRICT

CAMPBELL

HIGHWAY

NORTH CANOL

MP270

MP226

MP160

SHELDON LAKE 105J

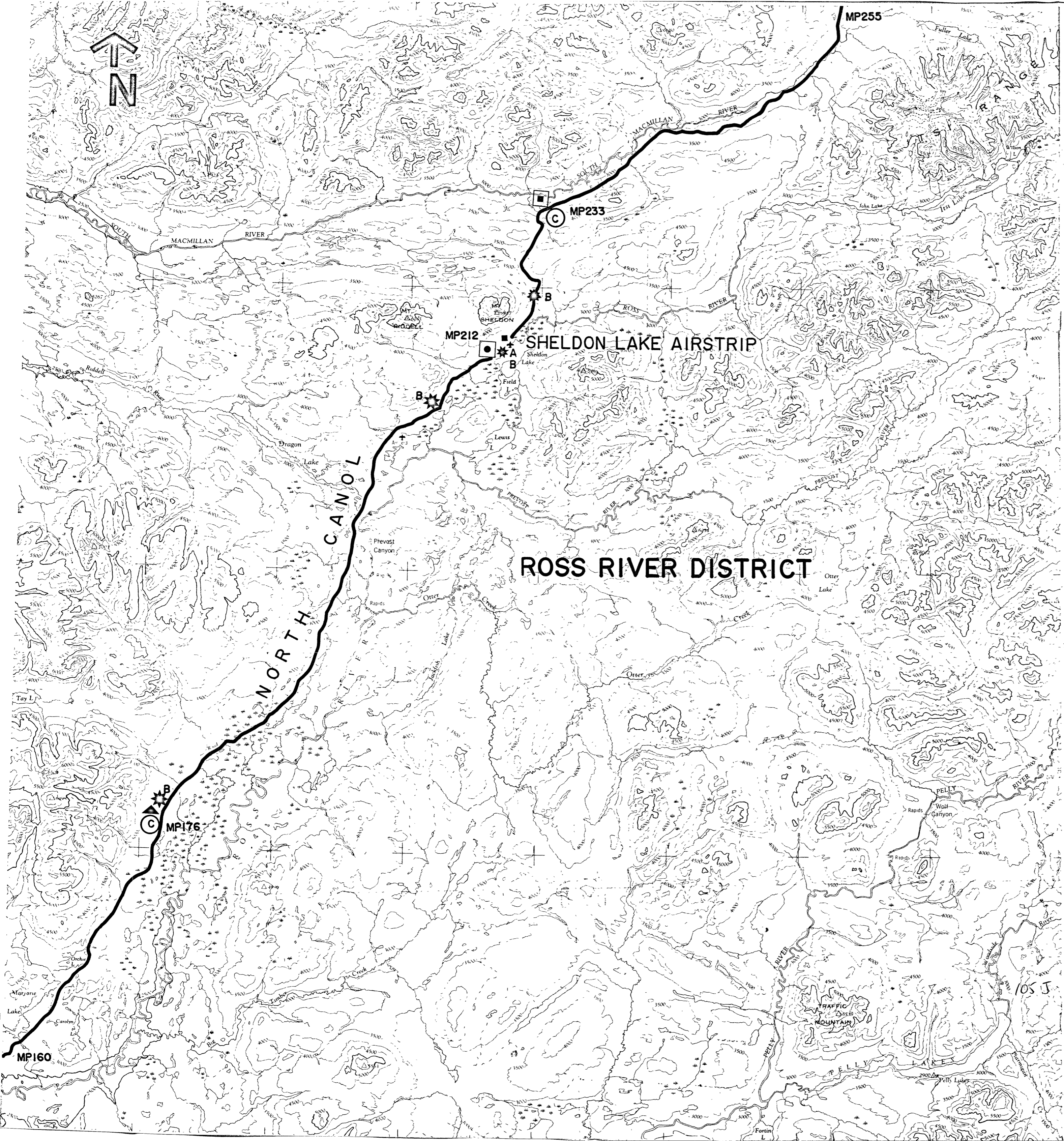
LEGEND :

- ✪ Northwest Staging Route Airports
- ☆ Radio Range Stations - NWSR
- U.S. Army Construction Camps (Alaska Hwy. & Canol Pipeline)
- ◼ Pvt. Contractor Construction Camp (Alaska Hwy. & Canol Pipeline)
- ▴ Highway Maintenance Camps
- ▲ U.S. Army Relay Stations
- Sawmills
- ⊙ Pump Station - Canol
- ⊙ Pump Station - Haines/Fairbanks
- ☆ Military activity
- ☆ Dump sites
- A Archives
- B Anecdotal

RESEARCH OF FORMER MILITARY SITES AND ACTIVITIES IN THE YUKON

K. Bisset & Associates,
Whitehorse, Yukon

Base maps - N.T.S. 1 : 250,000



HESS RIVER 1050
 SEKWI MOUNTAIN 105P

LEGEND :

- ⊙ Northwest Staging Route Airports
- ☆ Radio Range Stations - NWSR
- ▣ U.S. Army Construction Camps (Alaska Hwy. & Canol Pipeline)
- ◻ Pvt. Contractor Construction Camp (Alaska Hwy. & Canol Pipeline)
- ▴ Highway Maintenance Camps
- ▲ U.S. Army Relay Stations
- Sawmills
- ⊙ Pump Station - Canol
- ⊙ Pump Station - Haines/Fairbanks
- ☆ Military activity
- ☆ Dump sites
- A Archives
- B Anecdotal

**RESEARCH OF FORMER
 MILITARY SITES AND
 ACTIVITIES
 IN THE YUKON**

K. Bisset & Associates,
 Whitehorse, Yukon

Base maps - N.T.S. 1 : 250,000

