

DUBLIN GULCH - EAGLE ZONE

SITE #88

(MINFILE #106D 025a)

1. LOCATION AND ACCESS

Coordinates 64-01-57 N, 135-47-44 W. Located on Eagle Pup, a south bank tributary of Dublin Gulch approximately 1.5 km east of its confluence with Haggart Creek (Photo 88-1). Elevation approximately 2900 to 3500 feet asl. Access to Eagle Zone is via the South McQuesten Highway (from Highway 11, Silver Trail) to Haggart Creek Road, and follow Dublin Gulch Road for approximately 1.5 km. Existing road access south up to the range directly above Eagle Pup has been blocked.

2. SITE PHYSIOGRAPHY

The main exploration camp is located along the north site of Dublin Gulch along a raised shoreline out-wash terrace approximately 20 m north from the gulch tributary. Over-burden from placer activities in the Gulch have also significantly altered surface hydrology in the area (see Photo 88-1). The presence of permafrost soils could not be ascertained; however, the presence of small trees and the high elevation suggests the possibility of discontinuous permafrost.

3. GEOLOGY AND MINERALIZATION (from original minfile)

The Dublin Gulch area is underlain by deformed Upper Proterozoic to Lower Cambrian clastic rocks of the Hyland Group that have been intruded by Cretaceous age Tombstone suite stocks, dykes and sills. Alteration and gold and tungsten mineralization is directly associated with the intrusions. The north edge of the Potatoe Hills stock, contains quartz-arsenopyrite veins over a length of 3.2 km. Most veins strike northeast and range in width from a few to 2 m and occasionally wider. Arsenopyrite-rich veins usually occur in the centre of this area and range in width from 10-25 cm. Minor amounts of pyrite occur with the arsenopyrite. A vein on the Victoria claims assayed 8.6 g/t gold and 13 g/t silver over a width of 0.6 m for the 23 m length of the drift. Similar assays were obtained from other veins. Rio Plata conducted a turam survey and bulldozing program which reportedly outlined a narrow, silver-rich vein and more arsenopyrite veins. The presence of silver veins in the area is further suggested by the presence of siderite containing sphalerite, galena, and jamesonite in the placer gravels. The 1986 drilling tested 4 of 14 veins outlined by Queenstake. Best results were obtained from the Catto Vein where one hole returned 44.6 g/t gold over 0.4 m, while a second, 91 m to the west, assayed 60.3 g/t gold also over 0.4 m. A hole in the No. 23 vein intersected 74.7 g/t gold over 0.5 m. In 1988, additional drilling on the Catto vein returned up to 11.2 g/t gold across a true thickness of 2.7 m, while work elsewhere on the property located a few veins on the floor of Dublin Gulch. A chip sample from one of these assayed 41.1 g/t gold over 1 m. Trenching on the Smoky 64, R&D 16 and Bob 3 claims in 1989 exposed three new vein systems

localized along ENE-trending faults which dip steeply south. Channel samples from the trenches returned values up to 8.61 g/t gold. Hole 91-12 intersected 3 m of granodiorite and clay with 1 cm pyrite-arsenopyrite veins, which graded 17.1 g/t gold. Hole 92-36 on the RD2 claim intersected a quartz-arsenopyrite vein cutting sericite-altered granodiorite, which assayed 13.6 g/t gold. Trenching and drilling of the Dublin Gulch deposit by Amax Gold and Ivanhoe in 1991, outlined a resource of 90 million tonnes grading between 0.93 and 13.6 g/t gold. First Dynasty drilled 12 reverse circulation drill holes and one diamond drill hole (2,909.6 m) within the main Eagle Zone to further define the ore zone's grade and extent. Seven of the 12 reverse circulation drill holes returned above-average ore grades and widths, while the remaining 5 were instrumental in defining the boundary of the deposit. The diamond drill hole returned anomalous assays from the top 145 m, grading 0.24 g/t gold with only three samples grading better than (1.02, 1.29 and 1.59) g/t gold. These results showed that mineralization continues along trend but becomes sub-economic to the northeast. At the end of 1996, mineable reserves (proven & probable) in the Eagle Zone were 50.4 mT grading 0.93 g/t gold.

4. SITE HISTORY (from original minfile)

Placer gold was discovered on Haggart Creek in 1895 and on Dublin Gulch in 1898. The first lode staking was Dublin Lode, North Star et. al. (2404) in October, 1901, on which a 14 m adit was driven by 1904. By 1912, development work had been done on five separate properties, including Eagle Zone. An 8 m adit shaft was sunk on the Blue Lead group (8049), just to the east of Eagle Pup, recorded in December 1909. T. McKay and A.H. Martin tied on Bob, Mucking Futch et. al. Cl (55056) to the Olive claim in November, 1937, and prospected with pits and shallow shafts. In 1938, the claims were sold to Treadwell Yukon L, which performed more trenching. The property was transferred to Keno Mg CL in 1946. Restaked as Avoca, et al. Cl (59052) in October/48 by J.B. O'Neill and J.J. Colt, who explored with hand and bulldozer trenching in 1949-54, sold an interest in 1958 to E.H. Barker, who trenched in 1958-61 and sold the property to Peso Silver ML in 1962. Peso performed trenching in 1962. Restaked as part of the Pea, etc. cl (Y59052) in August/73 by Adonis ML in conjunction with nearby placer work; Shal cl (Y95002) in July/74 by J.M. McNulty; Dog cl (Y97149) in Nov/74 by H. Fromme; Pup cl (YA15128) in May/77 by R. Grant; and Smoky, Bob, DG etc. cl (YA17729) in April/78 by Queenstake Res L & Canada Tungsten Mg Corp L, which conducted extensive mapping, and geochemical and geophysical surveys in 1978 and 1979, backhoe trenching in 1980 and geochem sampling and mapping in 1981. In 1986, Canada Tungsten transferred some of the Smoky and Bob claims to G. Dickson and the remainder to Queenstake, which performed bulldozer trenching and 705m of diamond drilling later that year. The property was optioned to Can Pro Dev L which performed additional diamond drilling later that year and trenched in 1989. Dickson's claims were transferred to Queenstake in April and May, 1991. H-6000 holdings optioned the property in 1991, and joint ventured it to Amax Gold Inc., which explored with mapping, geochemistry, geophysics and 16 diamond drill holes totalling 2500 m. In 1992, Amax

explored with rotary percussion drilling which included 1117.7 m on the R.D. 2 and 16, Bob 1, Smoky 64-65 and 74-76 claims and 2 holes on the Smoky 51-52 claims. The property was returned to Ivanhoe Goldfields Ltd. (a successor company of H-6000 Holdings) which conducted reverse-circulation drilling and backhoe trenching on the Smokey 3,4 and 96 Fr. Claims in 1993. In Aug/94 First Dynasty Mines Ltd. acquired Ivanhoe Goldfields Ltd. In Oct/94 Queenstake Resources Ltd. transferred its interest in the Mar, R & D, DG, Jeff, Bob and Smoky claims to First Dynasty. In 1995, First Dynasty and in 1996 its wholly owned subsidiary, New Millenium Ltd. carried out a major drilling program to outline a core resource/reserve on Eagle Zone (minfile occurrence # 106D 025). The companies also carried out diamond drilling on Potato Hills (minfile occurrence #106D 026) to test for mineralization under the proposed heap leach pad area.

5. MINE DEVELOPMENT

5.1. Mine Openings and Excavations

Adits/Shafts/Portals

No apparent openings at this site; however, road access to the south along Eagle Pup was blocked.

Open Pits

No apparent pits at this site; however, road access to the south along Eagle Pup was blocked.

Trenches

No apparent trenches at this site; however, road access to the south along Eagle Pup was blocked.

5.2. Waste Rock Disposal Areas

No apparent waste rock, aside from overburden from placer activities in the Gulch; however, road access to the south along Eagle Pup was blocked.

5.3. Tailings Impoundments

Tailings Dams

No apparent dams

Tailing Ponds

No apparent tailings ponds

5.4. Minesite Water Treatment

No apparent treatment facilities.

6. MINE SITE INFRASTRUCTURE

6.1. Buildings

Buildings at the site were associated with the main and secondary camps located along Dublin Gulch Road, approximately 1.5 km east of Haggart Creek (Map Figure 88-1).

Main Exploration Camp

This site was determined to be the basis of operations for exploration activities of New Millenium Ltd. in Eagle Zone based on the extensive core and rock samples at the site. A layout of the main exploration camp showing the buildings and their relative locations is provided in Figure 88-2.

Building 88-A (Photo 88-2)

Cabin 1 was of stained wood construction (9 m W x 10 m L) with an aluminum metal reinforced roof, trimmed windows and painted interior. The building was stable and in good repair. Non-hazardous contents consisted of corebags, an old drum stove, domestic debris, clothes and mattress. No hazardous materials were found within the building; however, a drum of kerosene along with two other barrels with water and garbage were found outside along the northwest side of the building.

Building 88-B

A drying shack of wood construction (5 m x 5 m) located in bushes to the northwest of Cabin 1 was on the verge of collapse.

Building 88-C

Storage shack of wood construction (2.5 m x 2.5 m) located along the northwest side of Dublin Gulch Road. Non-hazardous contents consisted of old cardboard and other domestic debris. No hazardous materials were found within the shack.

Building 88-D (Photo 88-3)

Cabin 2 was of wood plank construction (5 m W x 8 m L) located on the southeast side of Dublin Gulch Road. The building was in ill-repair and partially collapsed. Non-hazardous contents consisted

of full coreboxes, an old stove, packages of quick-gel (~ 12), and wood debris. No hazardous materials were found within the cabin.

Building 88-E (Photo 88-4)

Two-room workshop and core/rock sample storage shack of plywood construction (3 m W x 12 m L) with aluminum metal reinforced roof directly across (southwest) from Cabin 3. The building was stable and in good repair. Non-hazardous contents consisted of a large number of cans of rock samples in plastic bags, storage racks of rock samples (library) and two empty drums. No hazardous materials were found within the shack.

Building 88-F (Photo 88-5)

Cabin 3 was of log wood construction (5 m W x 10 m L) with a combination shingle and aluminum metal reinforced roof and shingles, located immediately southeast of the workshop and core storage shack. The building was stable and in good repair. Non-hazardous contents consisted of core storage in racks and two empty drums. No hazardous materials were found within the cabin.

Building 88-G

Collapsed wood building behind (northeast) of Cabin 3; possibly an old core shack as suggested by associated corebox debris. Other non-hazardous debris included ten 20 L pails scattered here and in the vicinity; four of these contained oil.

Building 88-H (Photo 88-6)

Drill equipment shop and garage of wood plank construction (3 m W x 6 m L) east of Cabin 3. The building was stable and in good repair. Non-hazardous contents consisted of drill bits and equipment; full core boxes were also laid out in front of the garage entrance. Potentially hazardous materials found within the garage included single cans each of antifreeze and oil, a very minor oil stain was also noted on the dirt floor of the structure.

Building Cluster 88-I (Photo 88-7)

Five core shacks of wood construction (3 m W x 7 m L) and aluminum metal reinforced roofs. Three of these were intact and contained core boxes, while another had been previously marked and used for dynamite. The fifth shack, closest to Dublin Gulch Road, had collapsed. Aside from core boxes within some of the structures and scattered in the vicinity, no other non-hazardous materials were noted. No hazardous materials were apparent within or around the structures.

Secondary Exploration Camp

This small camp was located 400 m west of the main exploration camp along Dublin Gulch Road towards Haggart Creek (Figure 88-1) and may have also been used for placer mining as well as exploration activities. A layout of the camp showing the buildings and their relative locations is provided in Figure 88-3.

Building 88-J (Photo 88-8)

Old trailer of aluminum and steel construction (2.5 m W x 13 m L) located along the north side of Dublin Gulch Road. The trailer was in relatively good structural condition. The trailer had been fully equipped and contained non-hazardous domestic debris including a tub and sink, in addition to an old couch and other domestic garbage outside of the trailer. No hazardous materials were apparent within or around the structure.

Building 88-K (Photo 88-9)

Old tent frame of wood construction (4 m W x 5 m L) located northwest of the old trailer along the north side of Dublin Gulch Road. No hazardous or non-hazardous materials were apparent within or around this structure.

Building 88-L (Photo 88-10)

"Watermelon" shack of wood construction (3 m W x 8 m L) located along the south edge of Dublin Gulch Road. Building is stable and well-maintained. Non-hazardous materials within the building consisted of domestic debris. A cluster of corebox piles (Photo 88-11) were also observed to the east of the shack. No hazardous materials were apparent in the vicinity.

6.2. Fuel Storage

No apparent fuel storage facilities; aside from occasional barrels of oil at exploration camp mentioned above.

6.3. Rail and Tressel

No apparent activity

6.4. Milling and Processing Infrastructure

No processing facilities are apparent.

6.5. Electrical Equipment

No apparent electrical equipment

7. SOLID WASTE DUMPS

A small mound of garbage debris (10 x 10 m) was observed at the main exploration camp site in scrub approximately 40 m northwest of Dublin Gulch Road. The dump was well away (> 100 m) from any drainage in the vicinity. The dump consisted of non-hazardous materials including domestic waste. No hazardous materials were observed. Given its distance from any water course in the vicinity, no samples were taken.

8. POTENTIAL CONTAMINANTS OF CONCERN

8.1. Out of Service Transformers

None apparent at site

8.2. Metals and Hydrocarbons in Soil

No evidence of any significant staining, spills, or odours.

8.3. Liquid Hazardous Materials

None apparent at site; aside from hydrocarbon products noted previously in some containers at the site.

8.4. Solid Hazardous Materials

None apparent at site.

9. WATER QUALITY

No samples were taken due to the dry topography of area and distance from any observable water course.

10. RECLAMATION

Natural revegetation is beginning to occur at both the main and secondary camps site (see Photos 88-1 to 88-11). No evidence of any reclamation measures at this site.

11. OTHER SOURCES OF INFORMATION AND DATA

Much of the available information for this area is focused on the exploration activities of New Millenium Mining Ltd. within the Dublin Gulch area.

12. REFERENCES AND PERSONAL COMMUNICATIONS

Yukon Geology Program, 1997. Yukon Minfile 106D 025, Whitehorse, Yukon.

Amax Gold (B.C.) Ltd., (Sept. & Nov.), 1992. Assessment Reports #093045 and 093050 by A.C. Hitchins.

Amax Gold (B.C.) Ltd., (Dec.), 1992. Assessment Reports #093062 by C.N. Orssich (used in production of minfile)

Annual Report, 1904. Part A, p.38-39.

Can-Pro Development Ltd., (March), 1990. Assessment Report #092841 by D.R. Brown.

Emond, D.S., 1992. Petrology and geochemistry of tin and tungsten mineralized plutons, McQuesten River Region, Central Yukon. In: Yukon Geology Vol.3, Exploration and Geological Services Division, DIAND, p. 167-195 (used in production of minfile)

Emond, D.S. and Lynch, T, 1992. Geology, mineralogy and geochemistry of tin and tungsten mineralized veins, breccias and skarns, McQuesten River Region (115P (North) and 105 M 13), Yukon. In: Yukon Geology Vol.3, Exploration and Geological Services Division, DIAND, p. 133-159. (used in production of minfile)

First Dynasty Mines Ltd., 1995. Annual Report. (used in production of minfile)

First Dynasty Mines Ltd., 1996. Assessment Report #093409 by M. Sieb. (used in production of minfile)

First Dynasty Mines Ltd., 1996. Press Release. 12 Mar/96, 5 May/96. (used in production of minfile)

Geological Survey of Canada, Bulletin 111, Fig. 18 (used in production of minfile)

Geological Survey of Canada, Paper 61-23, p. 33.

Geological Survey of Canada, Paper 63-38, p. 9.

George Cross Newsletter, 16 Mar./87, 20 Apr./88, 3 Jan/90, 16 Dec./91, 30 Dec./92; 7 Feb/94. (used in production of minfile)

Ivanhoe Goldfields Ltd. (July), 1993. Assessment Report #093141 by C.N. Orssich (used in production of minfile)

MacLean, T.A., 1914. Lode Mining in Yukon. Mines Branch Publication 222, p. 127-158.

New Millennium Mining Ltd. (March) 1996. Dublin Gulch Project Initial Environmental Evaluation, Volumes 1 to IV and Executive Summary.

New Millennium Mining Ltd. (December) 1996. Dublin Gulch Project Initial Environmental Evaluation, Addendum, Volume 1 + Appendices

Northern Miner, (2 May) 1988 and (21 Feb.) 1980. (used in production of minfile)

Queenstake Resources Ltd., (May) 1992. Assessment Report # 093028 (drill logs) by C. Orssich et al . (used in production of minfile)

Whitehorse Star, 1995. June 14 and September 21 Editions (used in production of minfile)

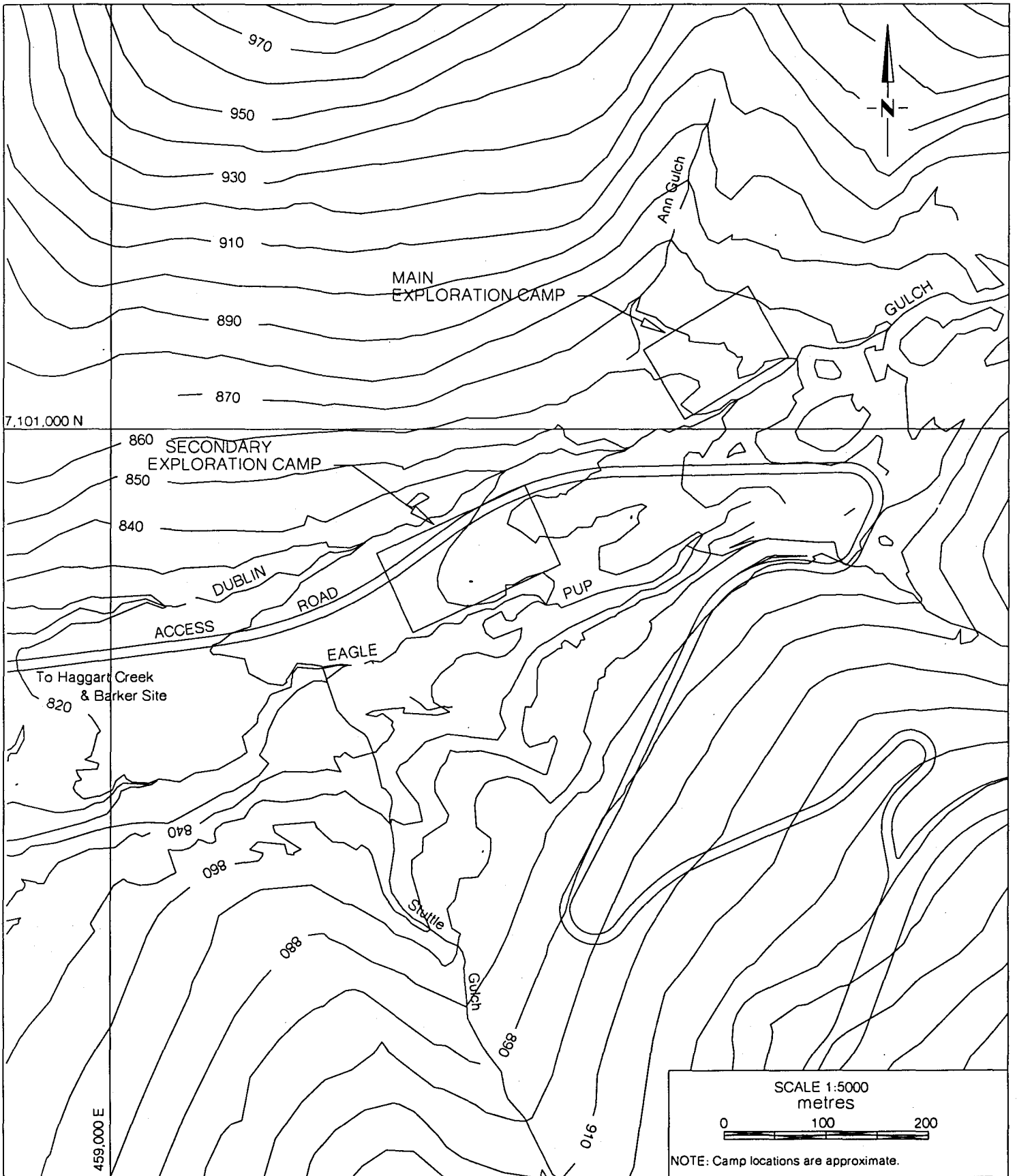
Yukon Mining and Exploration Overview, 1988, p.30-31. (used in production of minfile)


Yukon Exploration 1985-86, p. 293-294; 1991, p.6, 10, 12. (used in production of minfile)

Yukon Exploration and Geology, 1981, p.194; 1992, p.2, 4, 5. (used in production of minfile)

Yukon Exploration and Geology, 1995, p.8, 33 (used in production of minfile)

Yukon Exploration and Geology, 1979-80, p.238-240. (used in production of minfile)

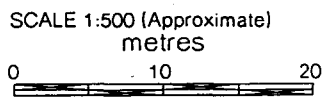
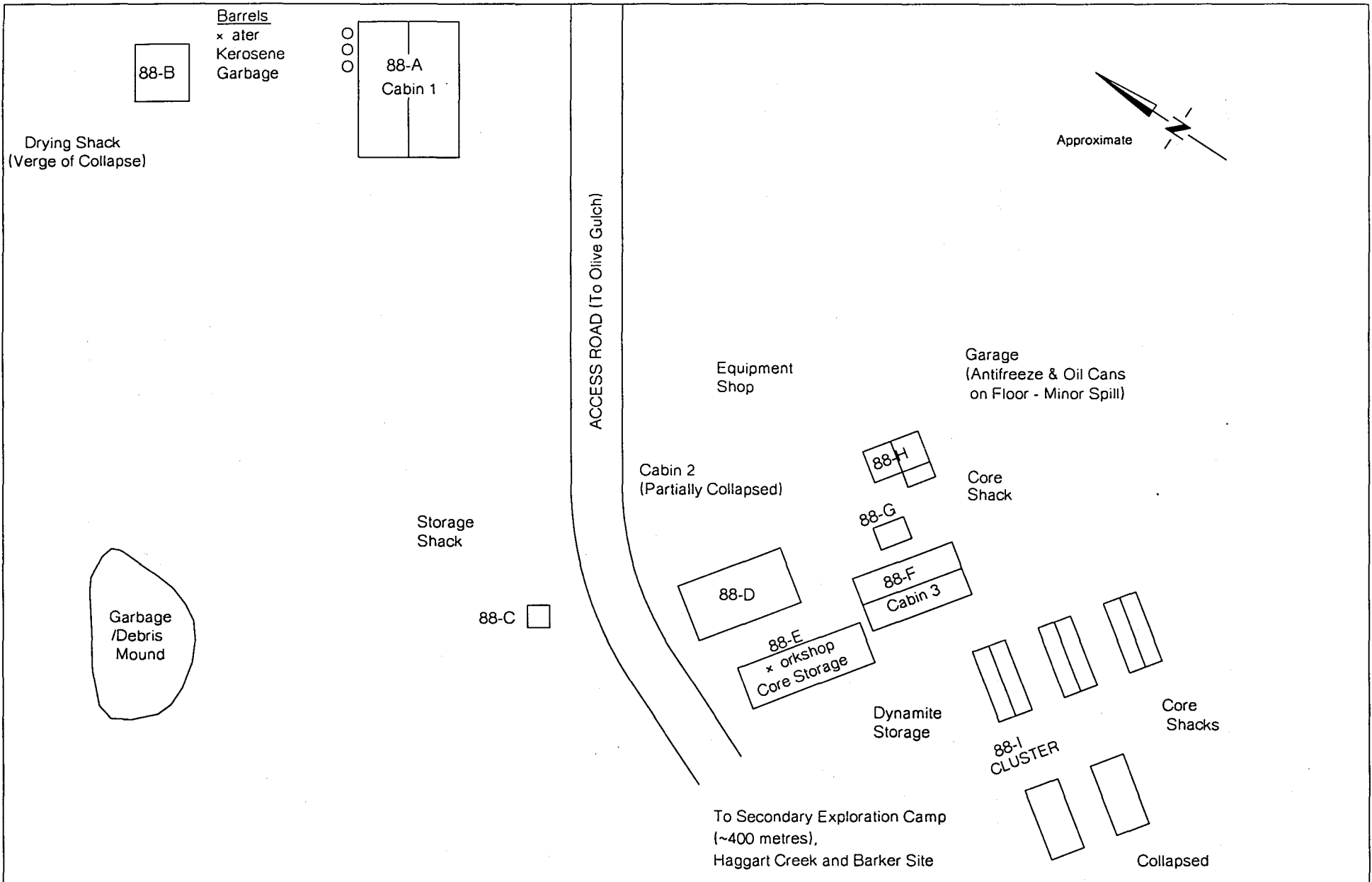




HEMMITT RESOURCE CONSULTANTS LTD.
 Suite 350, 1190 Hornby Street
 Vancouver, BC V6Z 2K5

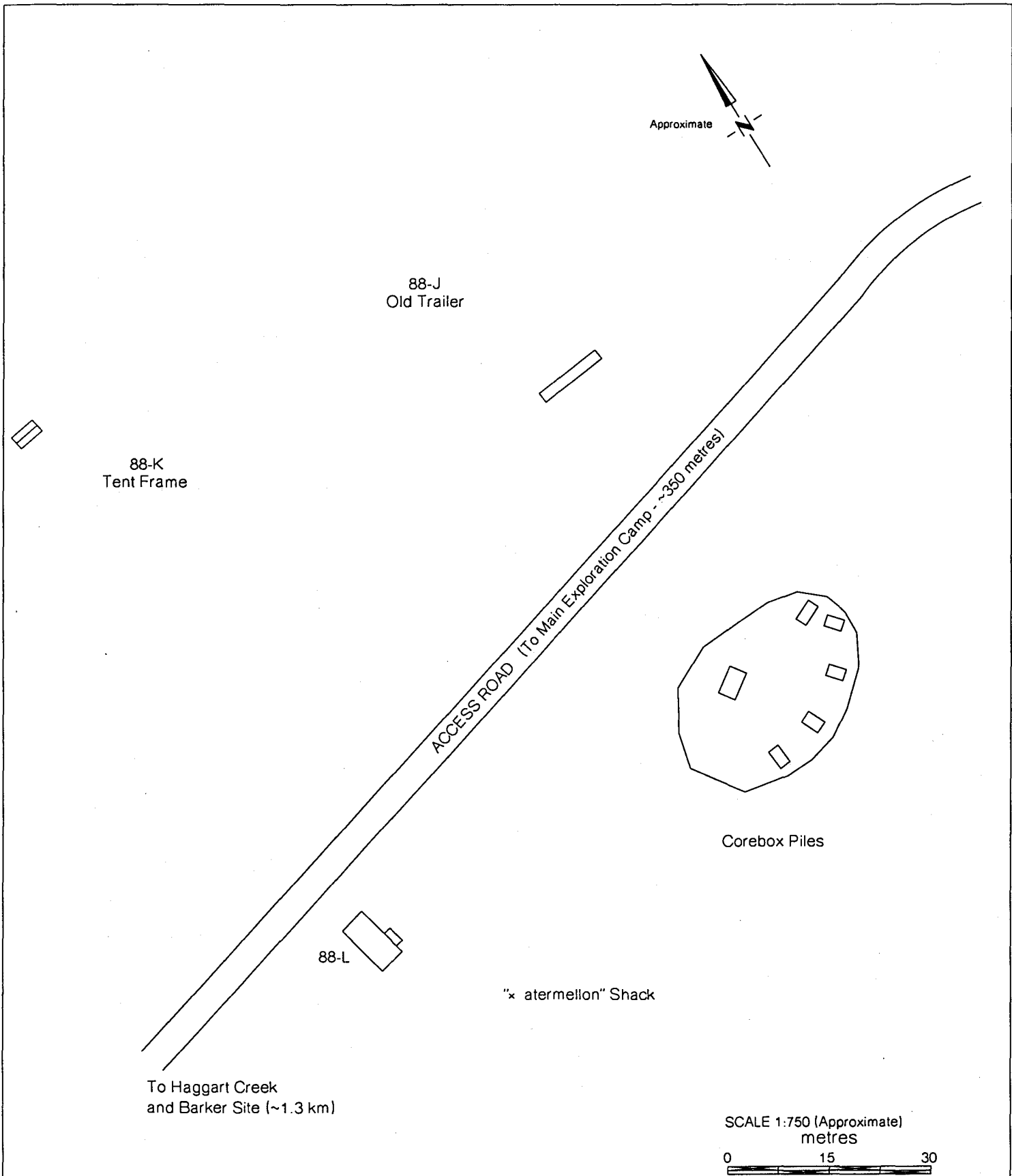
CLIENT:

BASELINE STUDY
DUBLIN GULCH
EAGLE ZONE
EXPLORATION SITE LOCATIONS

PROJECT No. 376-007.01/CK200	February 2000	FIGURE 88-1
---------------------------------	---------------	-------------



 HEMMIRA RESOURCE CONSULTANTS LTD. Suite 350, 1190 Hornby Street Vancouver, BC V6Z 2K5	BASELINE STUDY		
	DUBLIN GULCH EAGLE ZONE MAIN EXPLORATION CAMP		
CLIENT:	PROJECT No. 376-007.01/DublinGulch	February 2000	FIGURE 88-2




 HEMERA RESOURCE CONSULTANTS LTD. Suite 350, 1190 Hornby Street Vancouver, BC V6Z 2K5	BASELINE STUDY		
	DUBLIN GULCH EAGLE ZONE SECONDARY EXPLORATION CAMP		
CLIENT:	376-007.01/CK200	February 2000	FIGURE 88-3



Photo 88-1 : Dublin Gulch facing N.



Photo 88-2 : Dublin Gulch. Exploration Camp - cabin 1 looking N.W.



Photo 88-3 : Dublin Gulch. Exploration camp - cabin 2 looking N.W.



Photo 88-4 : Dublin Gulch. Exploration Camp - workshop & storage looking S.



Photo 88-5 : Dublin Gulch. Exploration Camp - cabin 4 looking S.E.



Photo 88-6 : Dublin Gulch. Exploration Camp - equipment building & garage looking N.E.



Photo 88-7 : Dublin Gulch. Exploration Camp - core shack looking W.



Photo 88-8 : Dublin Gulch. Exploration Camp - trailer along access road
- possibly used for placer mining (looking N.W.)



Photo 88-9 : Dublin Gulch. Exploration Camp- tent frame near access road (looking N.W.).



Photo 88-10 : Dublin Gulch. Exploration Camp - "watermelon" shack along access road (looking S.)



Photo 88-11 : Dublin Gulch. Exploration Camp - core boxes along access road near "watermelon" shack.