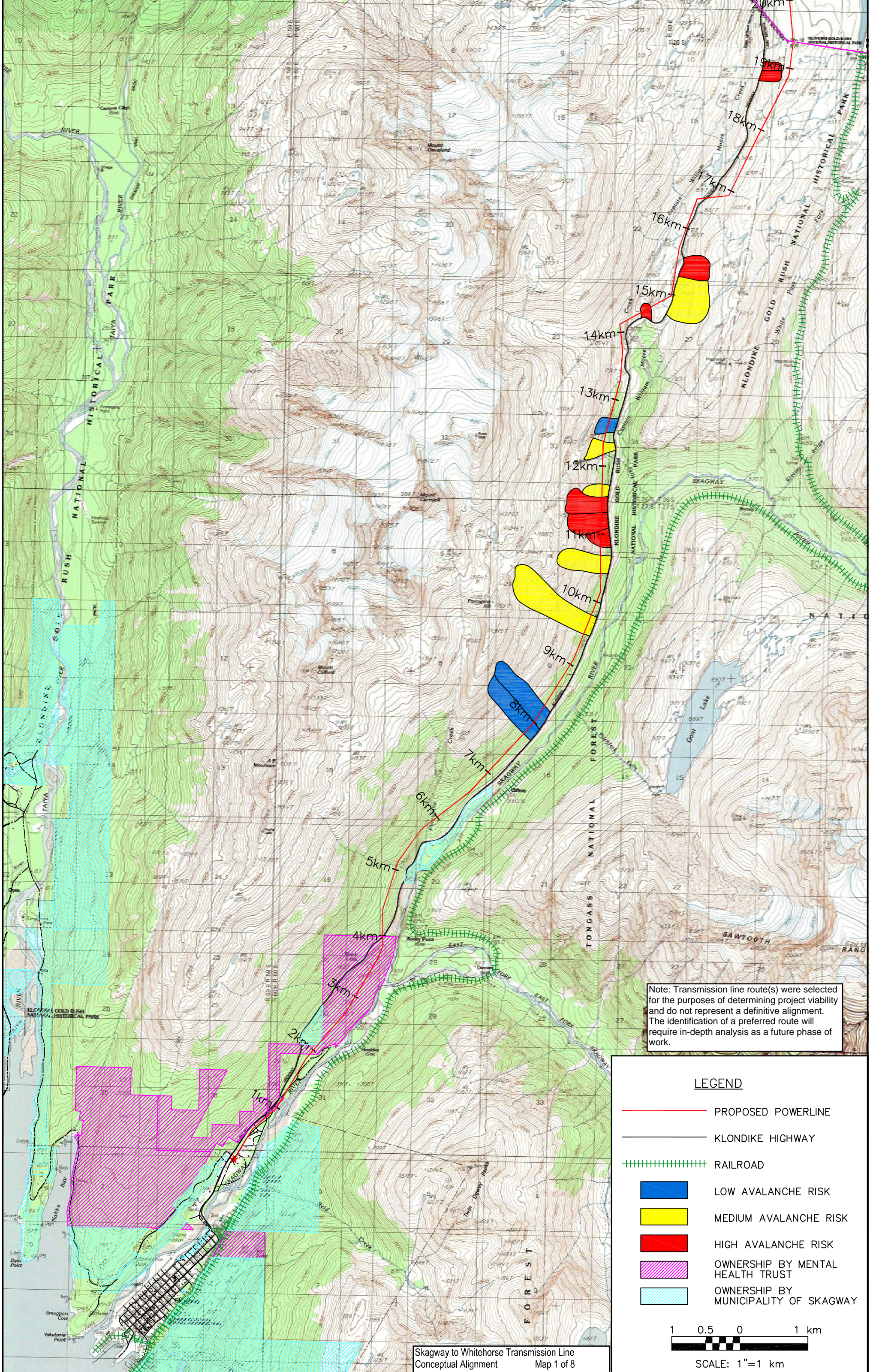


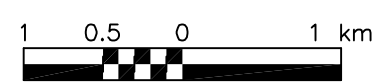
**APPENDIX A:
Transmission Line Concept Route Maps**



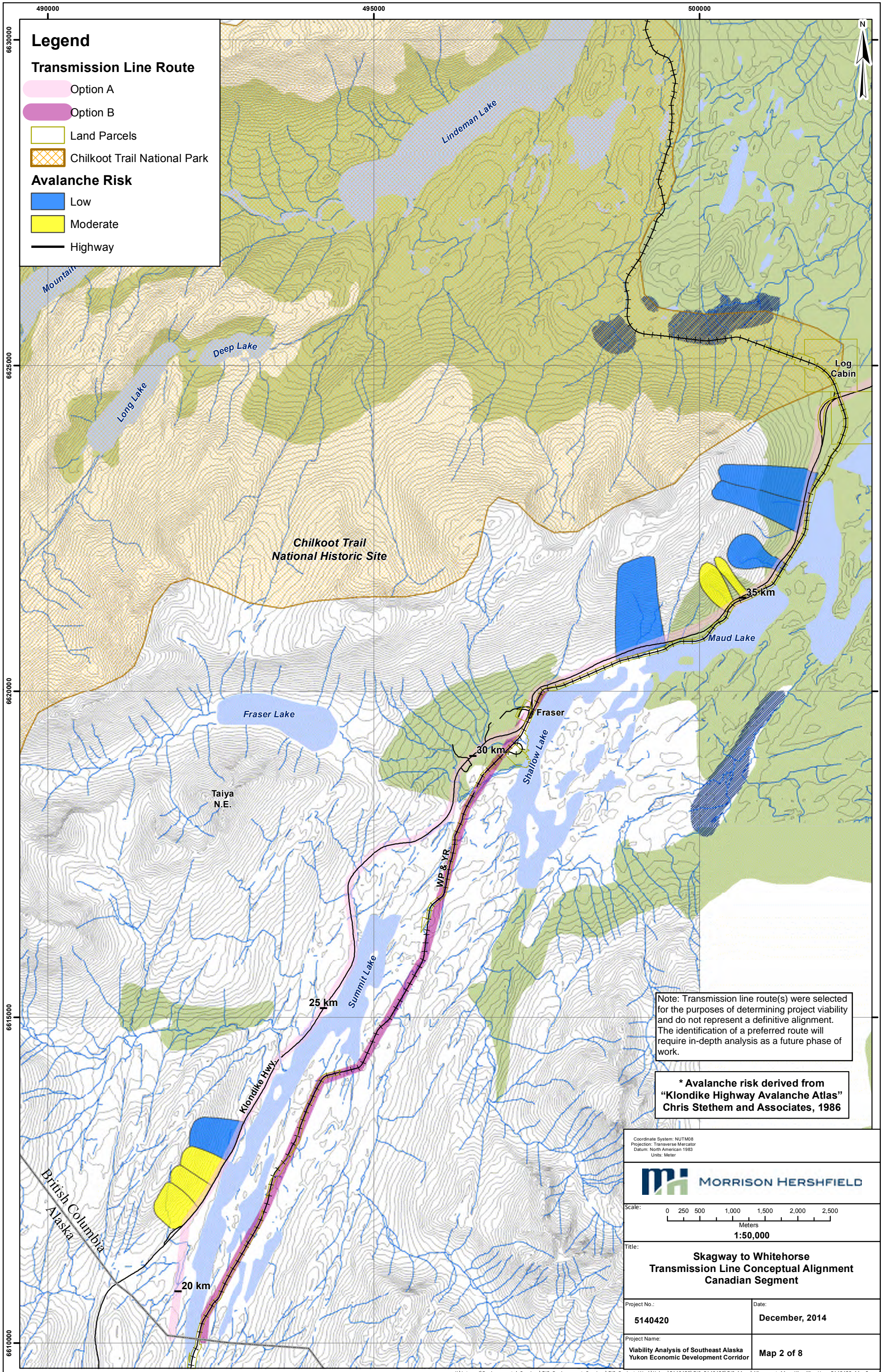
Note: Transmission line route(s) were selected for the purposes of determining project viability and do not represent a definitive alignment. The identification of a preferred route will require in-depth analysis as a future phase of work.

LEGEND

- PROPOSED POWERLINE
- KLONDIKE HIGHWAY
- +++++ RAILROAD
- LOW AVALANCHE RISK
- MEDIUM AVALANCHE RISK
- HIGH AVALANCHE RISK
- OWNERSHIP BY MENTAL HEALTH TRUST
- OWNERSHIP BY MUNICIPALITY OF SKAGWAY



SCALE: 1"=1 km



Legend

Transmission Line Route

- Option A
- Option B
- Land Parcels
- Chilkoot Trail National Park

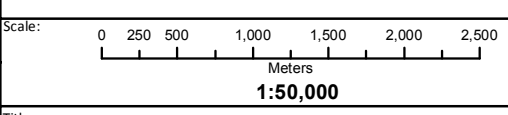
Avalanche Risk

- Low
- Moderate
- Highway

Note: Transmission line route(s) were selected for the purposes of determining project viability and do not represent a definitive alignment. The identification of a preferred route will require in-depth analysis as a future phase of work.

* Avalanche risk derived from "Klondike Highway Avalanche Atlas" Chris Stethem and Associates, 1986

Coordinate System: NUTM08
 Projection: Transverse Mercator
 Datum: North American 1983
 Units: Meter



Title:
**Skagway to Whitehorse
 Transmission Line Conceptual Alignment
 Canadian Segment**

Project No.: **5140420** Date: **December, 2014**

Project Name:
**Viability Analysis of Southeast Alaska
 Yukon Economic Development Corridor** **Map 2 of 8**

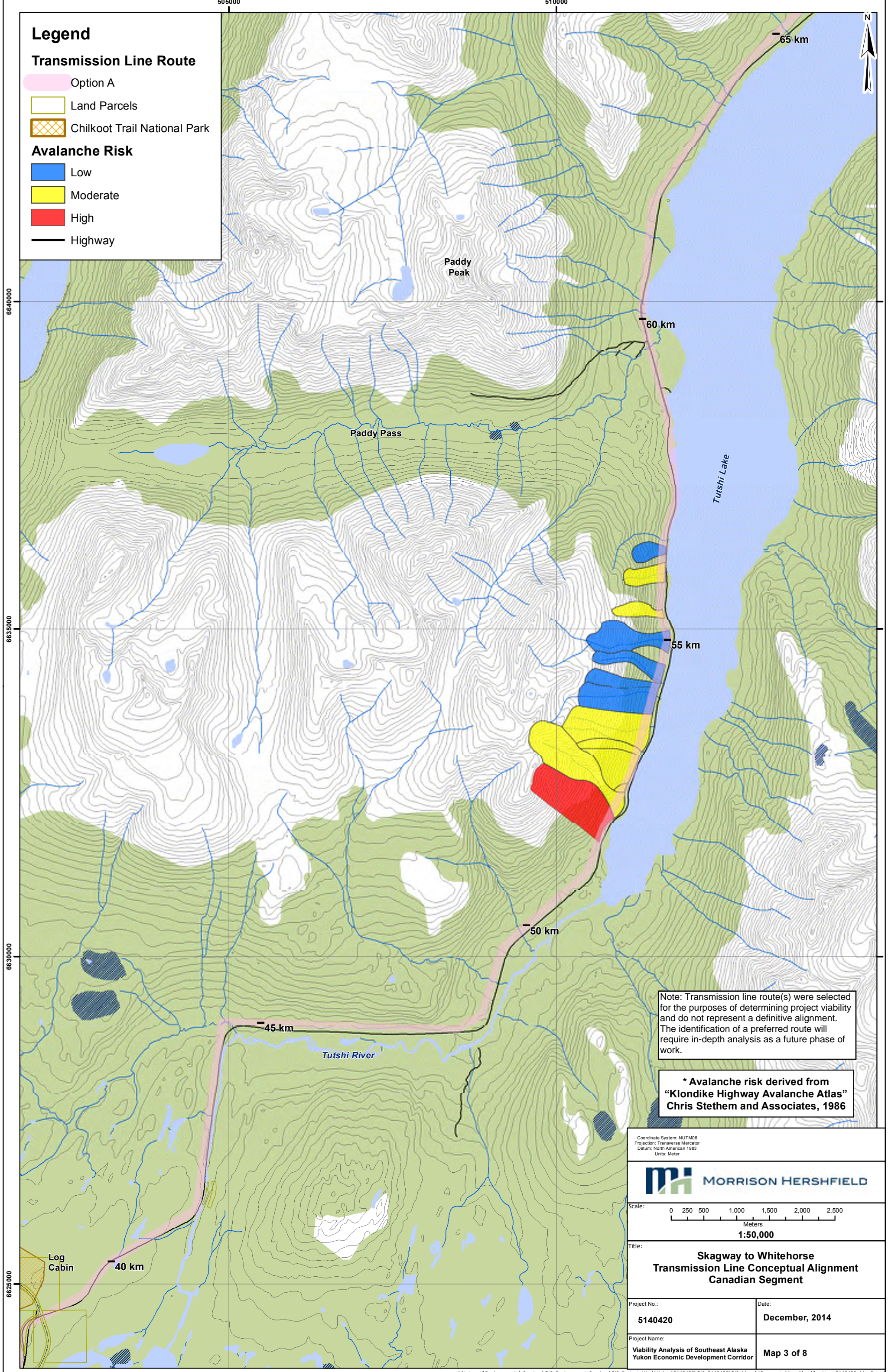
Legend

Transmission Line Route

- Option A
- Land Parcels
- Chilkoot Trail National Park

Avalanche Risk

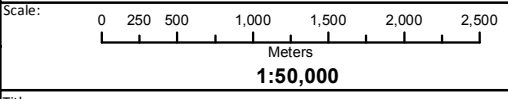
- Low
- Moderate
- High
- Highway



Note: Transmission line route(s) were selected for the purposes of determining project viability and do not represent a definitive alignment. The identification of a preferred route will require in-depth analysis as a future phase of work.

* Avalanche risk derived from "Klondike Highway Avalanche Atlas" Chris Stethem and Associates, 1986

Coordinate System: NUTM08
Projection: Transverse Mercator
Datum: North American 1983
Units: Meter



Title: **Skagway to Whitehorse
Transmission Line Conceptual Alignment
Canadian Segment**

Project No.: **5140420** Date: **December, 2014**

Project Name: **Viability Analysis of Southeast Alaska
Yukon Economic Development Corridor** Map 3 of 8

515000

520000

525000

Legend

Transmission Line Route

Option A

Land Parcels

Avalanche Risk

Low

Moderate

High

Highway

Secondary Road

Yukon First Nation Settlement Lands

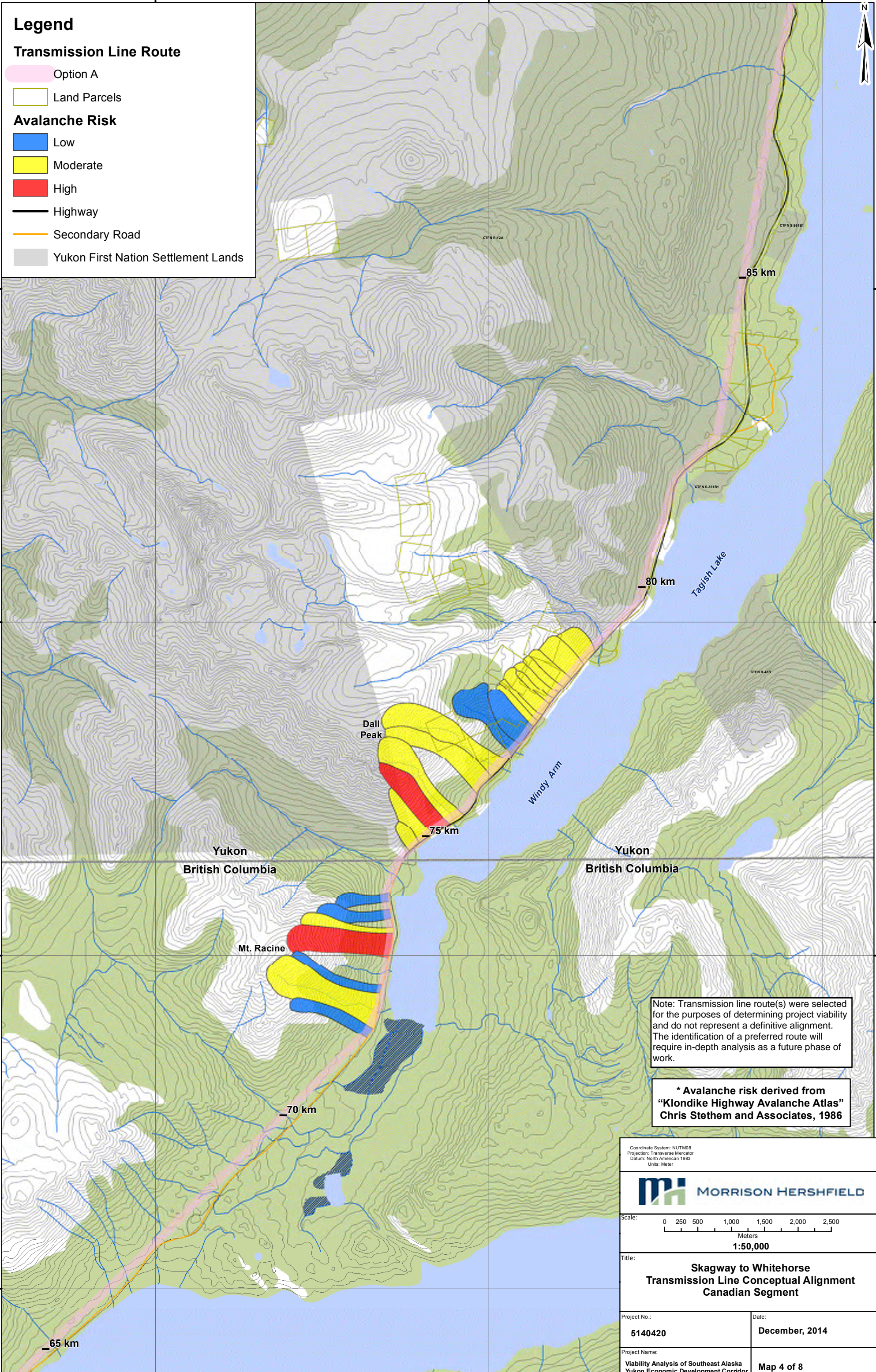


6660000

6655000

6650000

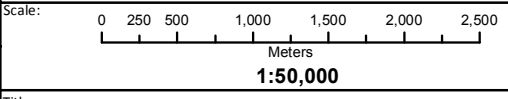
6645000



Note: Transmission line route(s) were selected for the purposes of determining project viability and do not represent a definitive alignment. The identification of a preferred route will require in-depth analysis as a future phase of work.

* Avalanche risk derived from "Klondike Highway Avalanche Atlas" Chris Stethem and Associates, 1986

Coordinate System: NUTM08
Projection: Transverse Mercator
Datum: North American 1983
Units: Meter



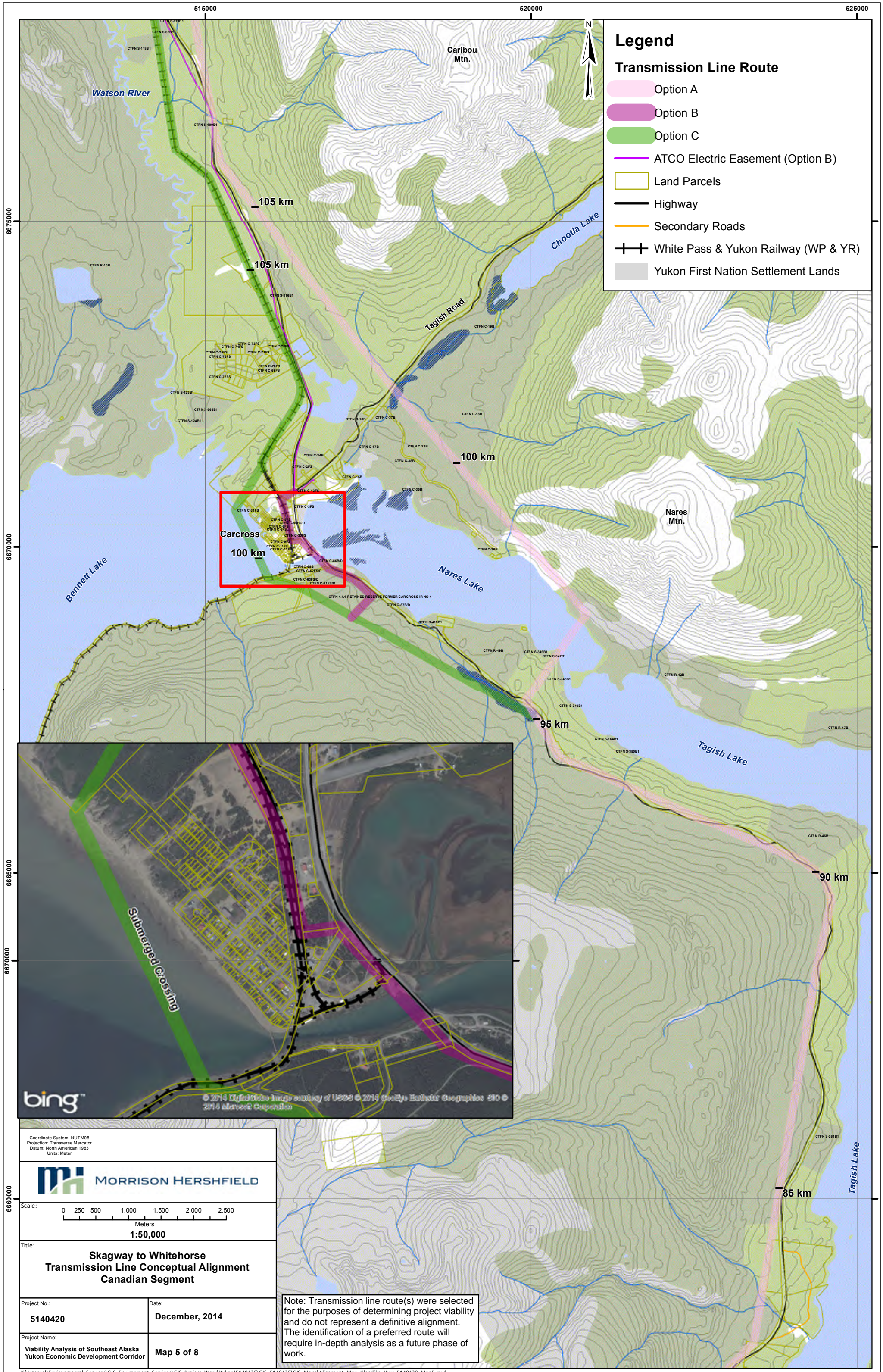
Title:
**Skagway to Whitehorse
Transmission Line Conceptual Alignment
Canadian Segment**

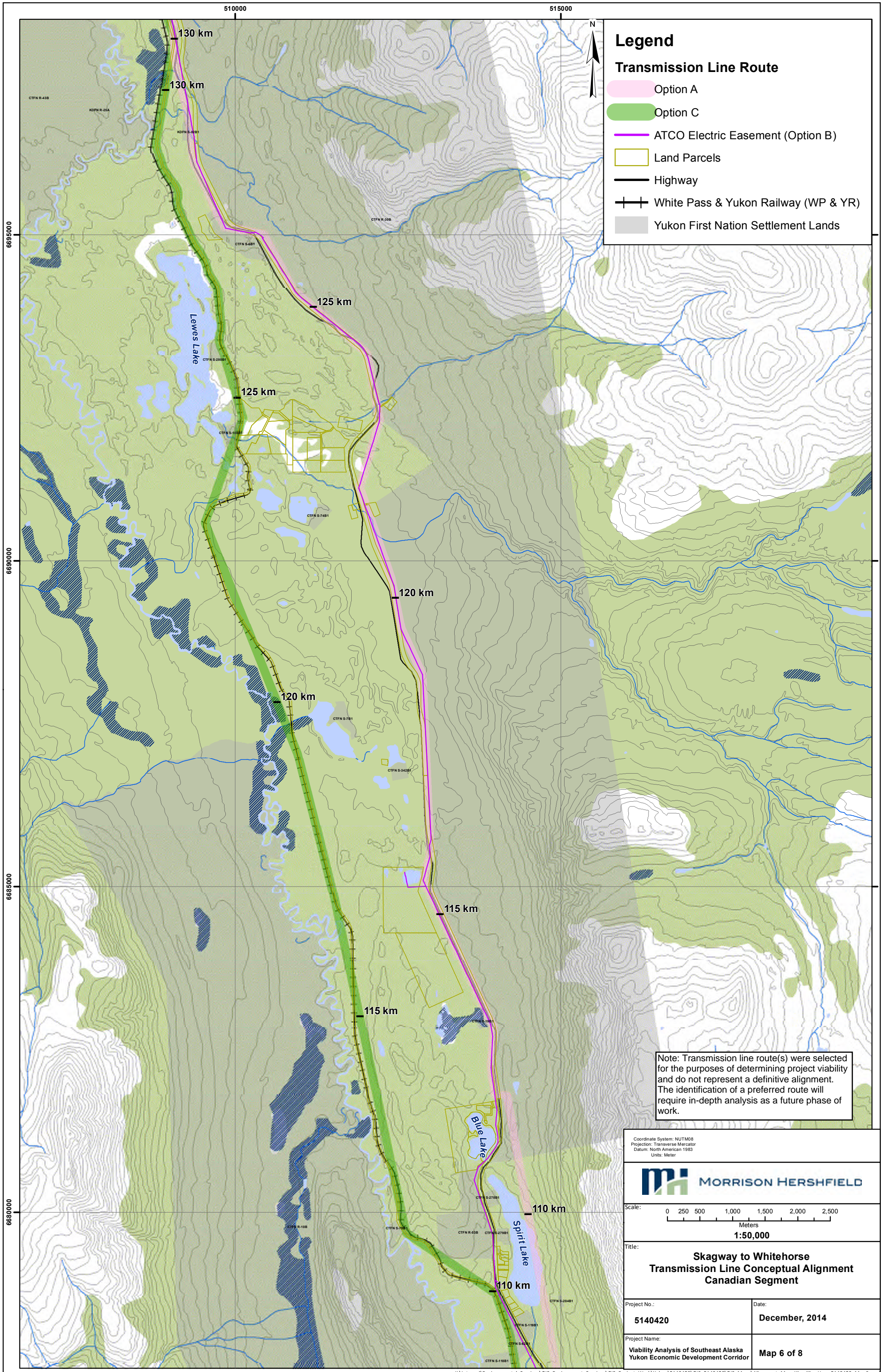
Project No.:
5140420

Date:
December, 2014

Project Name:
**Viability Analysis of Southeast Alaska
Yukon Economic Development Corridor**

Map 4 of 8





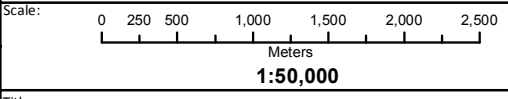
Legend

Transmission Line Route

- Option A
- Option C
- ATCO Electric Easement (Option B)
- Land Parcels
- Highway
- White Pass & Yukon Railway (WP & YR)
- Yukon First Nation Settlement Lands

Note: Transmission line route(s) were selected for the purposes of determining project viability and do not represent a definitive alignment. The identification of a preferred route will require in-depth analysis as a future phase of work.

Coordinate System: NUTM08
 Projection: Transverse Mercator
 Datum: North American 1983
 Units: Meter



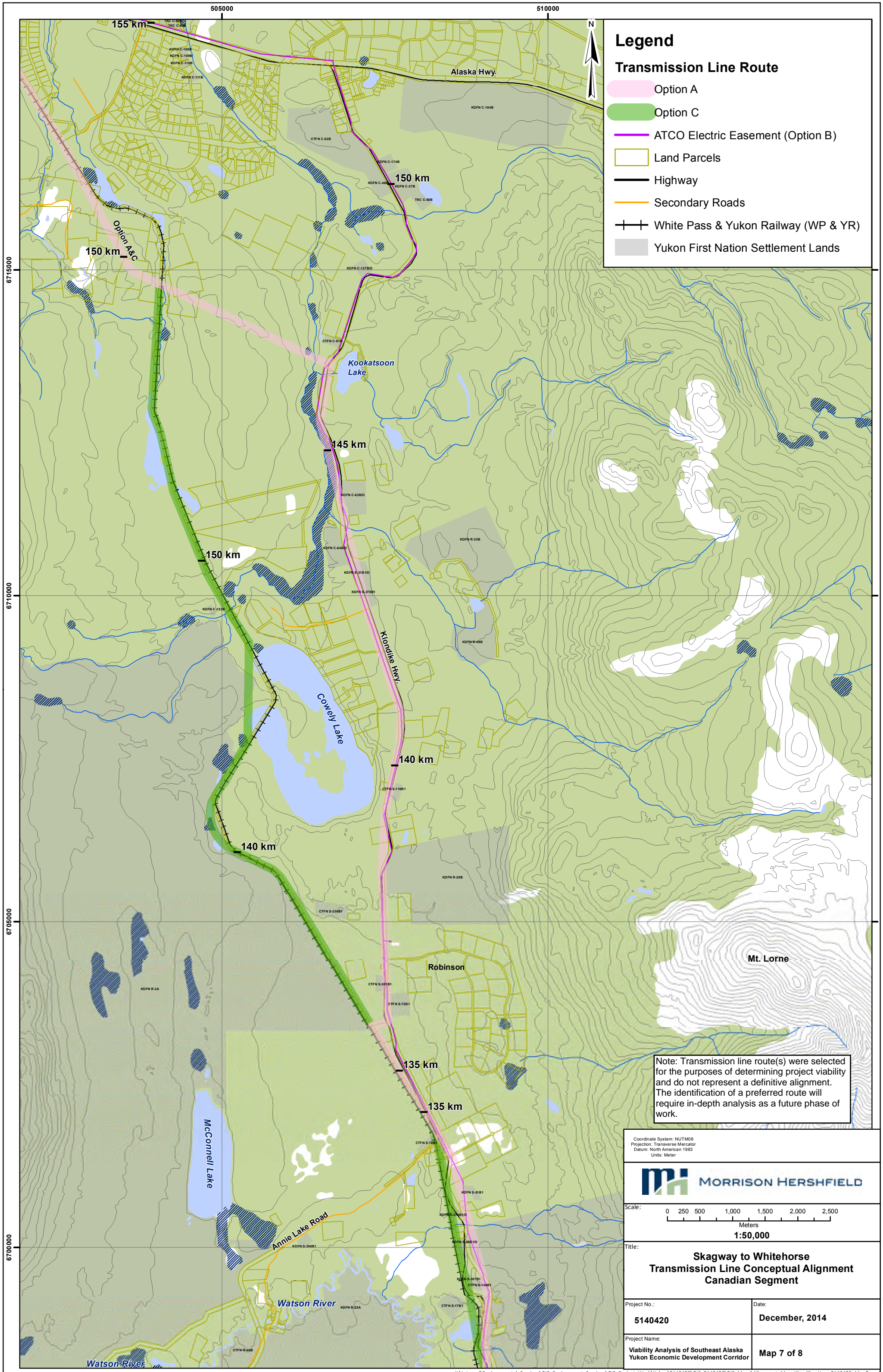
Title:
**Skagway to Whitehorse
 Transmission Line Conceptual Alignment
 Canadian Segment**

Project No.:
5140420

Date:
December, 2014

Project Name:
**Viability Analysis of Southeast Alaska
 Yukon Economic Development Corridor**

Map 6 of 8



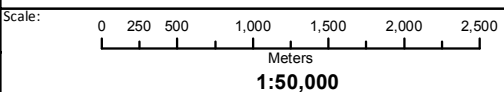
Legend

Transmission Line Route

- Option A
- Option C
- ATCO Electric Easement (Option B)
- Land Parcels
- Highway
- Secondary Roads
- White Pass & Yukon Railway (WP & YR)
- Yukon First Nation Settlement Lands

Note: Transmission line route(s) were selected for the purposes of determining project viability and do not represent a definitive alignment. The identification of a preferred route will require in-depth analysis as a future phase of work.

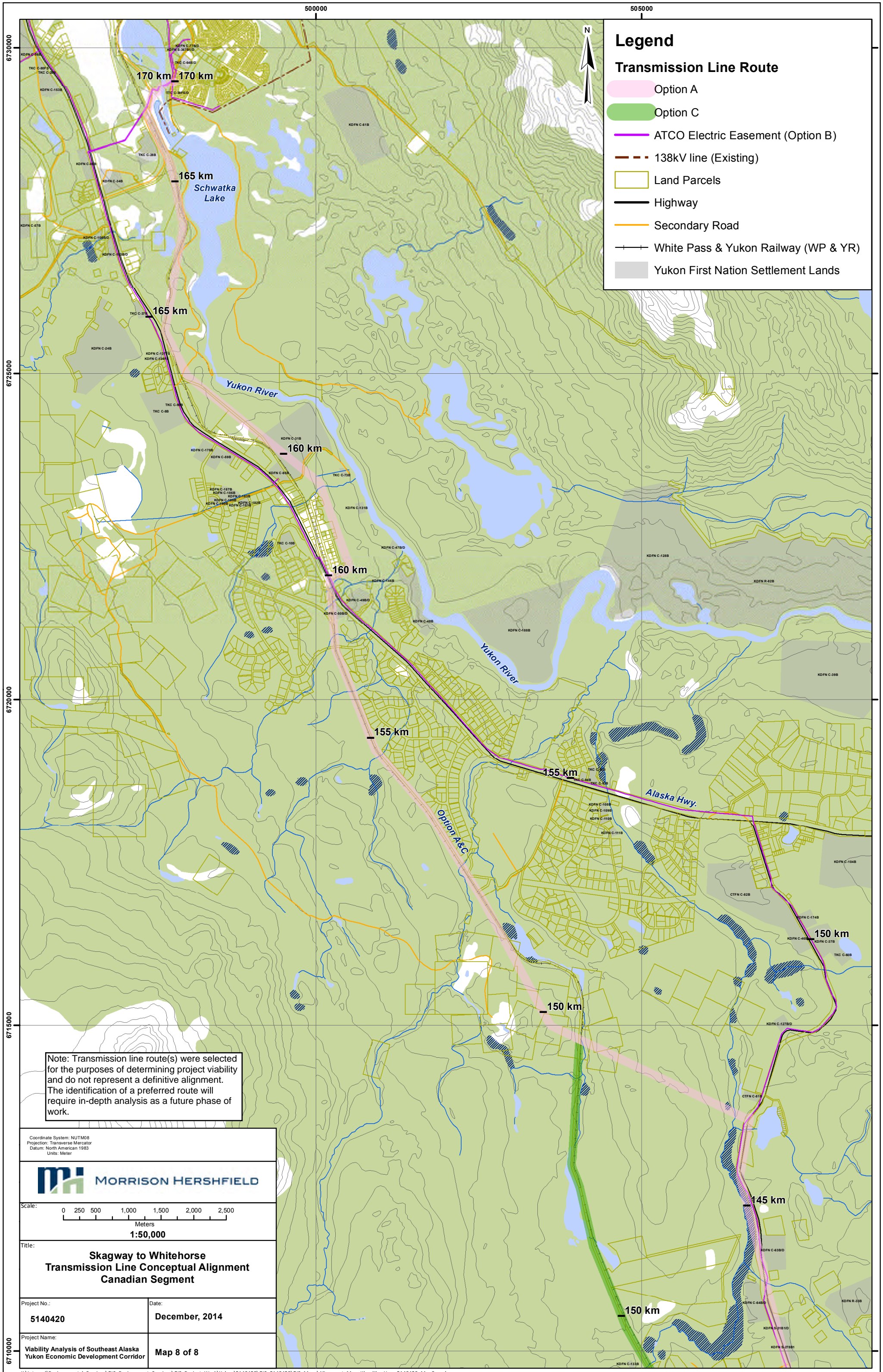
Coordinate System: NUTM08
 Projection: Transverse Mercator
 Datum: North American 1983
 Units: Meter



Title: **Skagway to Whitehorse
 Transmission Line Conceptual Alignment
 Canadian Segment**

Project No.: **5140420** Date: **December, 2014**

Project Name: **Viability Analysis of Southeast Alaska
 Yukon Economic Development Corridor** Map 7 of 8



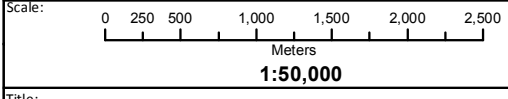
Legend

Transmission Line Route

- Option A
- Option C
- ATCO Electric Easement (Option B)
- 138kV line (Existing)
- Land Parcels
- Highway
- Secondary Road
- White Pass & Yukon Railway (WP & YR)
- Yukon First Nation Settlement Lands

Note: Transmission line route(s) were selected for the purposes of determining project viability and do not represent a definitive alignment. The identification of a preferred route will require in-depth analysis as a future phase of work.

Coordinate System: NUTM08
 Projection: Transverse Mercator
 Datum: North American 1983
 Units: Meter



Title:
**Skagway to Whitehorse
 Transmission Line Conceptual Alignment
 Canadian Segment**

Project No.:
5140420

Date:
December, 2014

Project Name:
**Viability Analysis of Southeast Alaska
 Yukon Economic Development Corridor**

Map 8 of 8