

Yukon Forest Management Branch

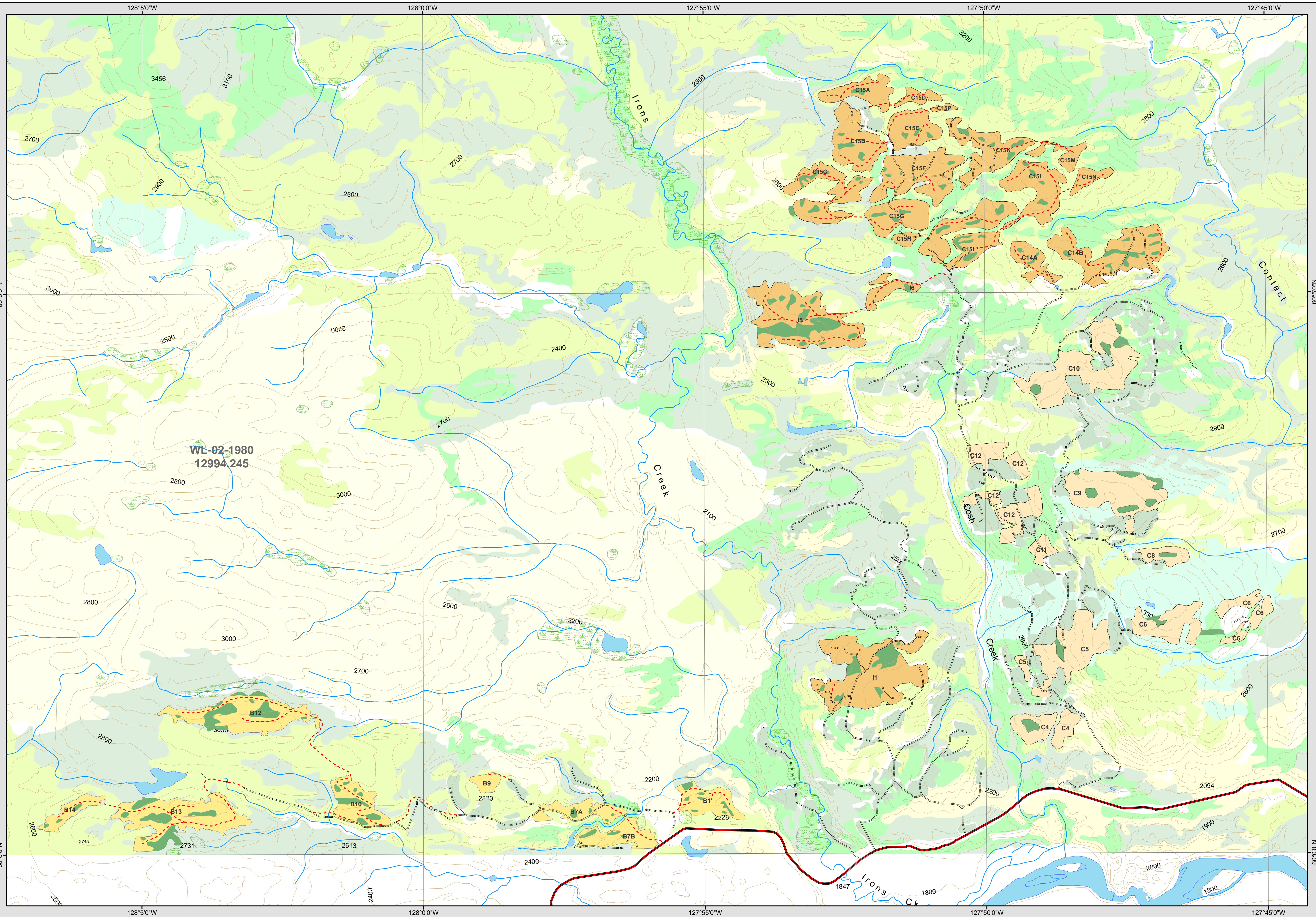
- | | |
|----------------|---------------------|
| Roads | Blocks |
| ==== Existing | Proposed Blocks |
| - - - Proposed | Year 2 |
| — Highway | Year 3 |
| Basemap | Internal Reserve |
| — Contour | Existing Openings |
| — Watercourse | Forest Cover |
| Waterbody | White Spruce |
| Wetland | Lodgepole Pine |
| Fire History | Alpine Fir |
| | Black Spruce |
| | Balsam Poplar |
| | Tembling Aspen |
| | White Birch |
| | Larch |

Albers Equal Area projection

Forest cover compiled by Forest Management Branch against NTDB 1:50,000 from 1:40,000 black and white photography

National Topographic Data Base (NTDB) compiled by Natural Resources Canada at 1:50,000. Reproduced under license from Her Majesty the Queen in Right of Canada, with permission of Natural Resources Canada.

This map is intended as a spatial reference overview of the East Hyland Planning Unit. For detailed and specific block information, consult block maps.



Overview Map

Interim Wood Supply for the East Hyland Planning Unit

0 1 2
Kilometers

Yukon
Energy, Mines and Resources
Energie, Mines et Ressources

1:30,000
January 2005