

LEGEND

PLEISTOCENE AND RECENT

- 3** FLUVIATILE DEPOSITS: silt, sand, and gravel  
 3a silt, sand, and gravel of terraces  
 3b silt, sand, and gravel of modern flood plains  
 3c silt, sand, and gravel of alluvial fans  
 3d silt, clay of fluvial or glaciolacustrine origin, with thermokarst depressions
- 2** GLACIO-FLUVIAL DEPOSITS: sand, gravel, minor silt  
 2a terrace and pitted-terrace, kame terrace and outwash delta deposits (see also pit and delta symbols)  
 2b hummocky or ridged deposits  
 2c esker complex deposits
- 1** GLACIAL DEPOSITS: till, minor sand, and gravel  
 1a terminal and recessional moraine deposits  
 1b ground moraine  
 1c dead ice deposits (with hummocky or knob-and-kettle form)

- Geological boundary (approximate, gradational) . . . . .
- Glacial striae . . . . .
- Drumlin or drumlinoid ridge . . . . .
- Direction of ice flow - last glaciation . . . . .
- intermediate glaciation . . . . .
- Cirques-containing active ice in last glaciation . . . . .
- containing active ice in intermediate or older glaciation, but not in last glaciation . . . . .
- End or terminal moraines - last glaciation . . . . .
- intermediate glaciation . . . . .
- age uncertain . . . . .
- Limit of glaciation (inferred but not marked by end moraine) - last glaciation . . . . .
- intermediate glaciation . . . . .
- Lateral moraines (locally including minor kame terraces) . . . . .
- Eskers and prominent ridges in esker complexes . . . . .
- Debris-covered glaciers . . . . .
- Rock glaciers (tongue-shaped, spatulate, lobate) . . . . .
- Erratic . . . . .
- Lateral and sub-lateral meltwater channels (arrow shows direction of flow) . . . . .
- Major meltwater discharge channels (arrow shows direction of flow) . . . . .
- Incised channels of modern streams . . . . .
- Erosional scarp . . . . .
- Land or rock slide . . . . .
- Pingo . . . . .
- Patterned ground . . . . .
- Pits or kettles . . . . .
- Delta . . . . .
- Palsa . . . . .

Geology by P. Vernon and O. L. Hughes, 1961

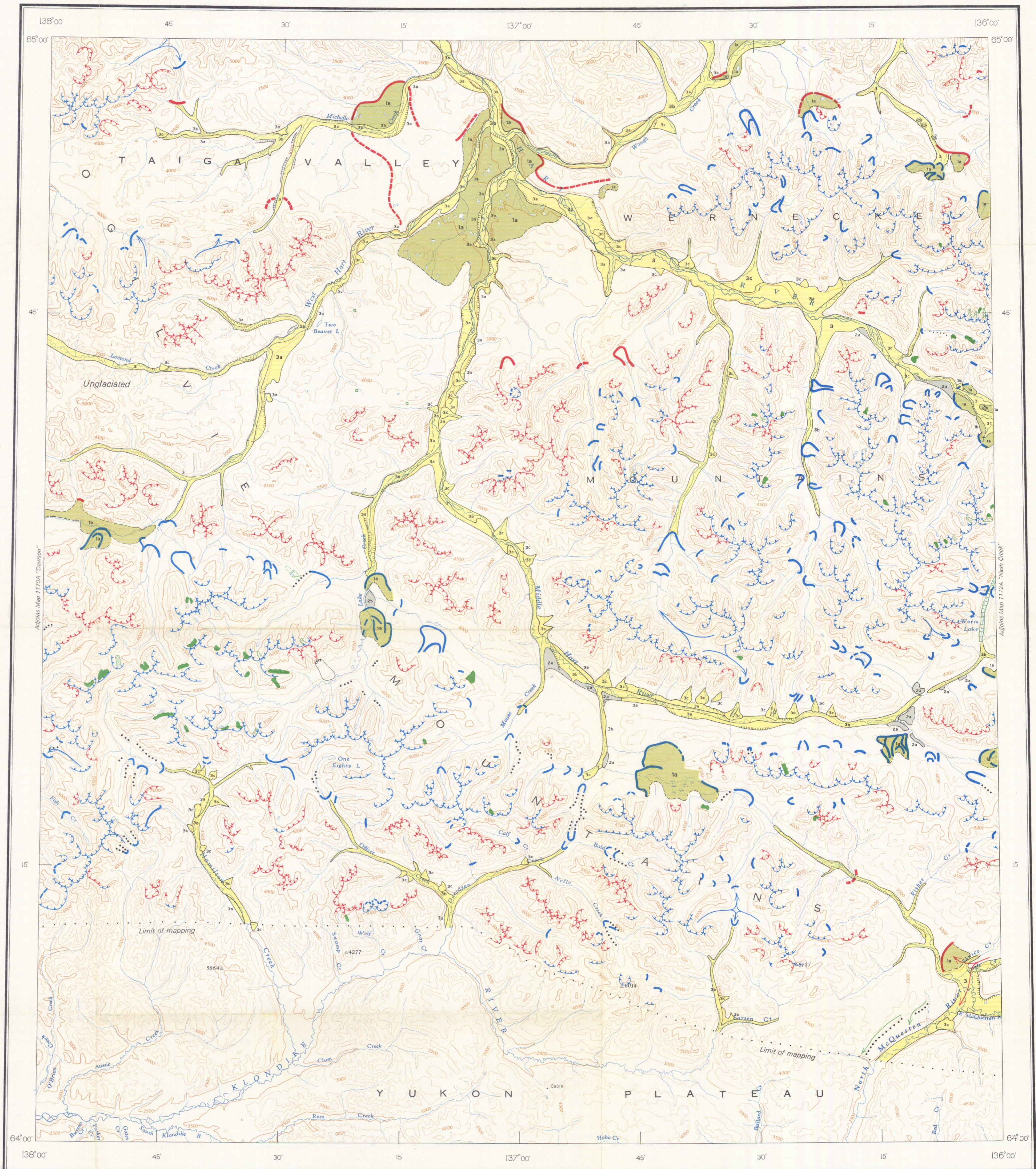
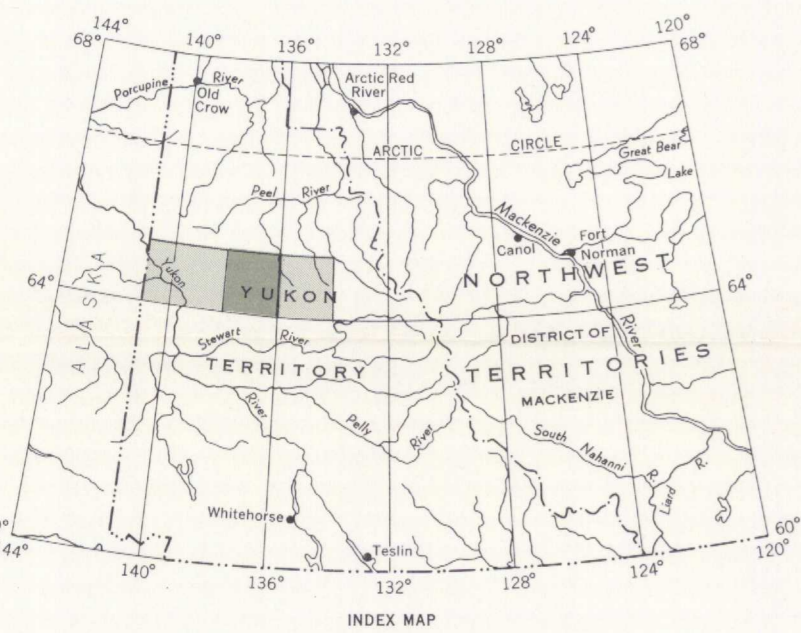
To accompany G. S. C. Bulletin 136 by Peter Vernon and O. L. Hughes

Geological cartography by the Geological Survey of Canada, 1964

- Road, all weather . . . . .
- Other roads . . . . .
- Cart track . . . . .
- Trail . . . . .
- Power transmission line . . . . .
- Horizontal control point . . . . .
- International boundary . . . . .
- Intermittent lake and stream . . . . .
- Marsh . . . . .
- Contours (interval 500 feet) . . . . .

Base-map compiled and drawn by the Surveys and Mapping Branch, 1954

Mean magnetic declination, 34° 10' East decreasing 4.2' annually. Readings vary from 33° 12' in the S W corner to 34° 41' in the N E corner of the map-area

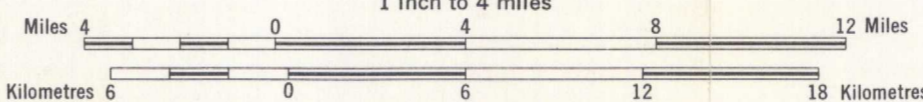


PUBLISHED, 1965  
 COPIES OF THIS MAP MAY BE OBTAINED FROM THE  
 DIRECTOR, GEOLOGICAL SURVEY OF CANADA, OTTAWA

PRINTED BY THE SURVEYS AND MAPPING BRANCH

MAP 1171A  
 SURFICIAL GEOLOGY  
**LARSEN CREEK**  
 YUKON TERRITORY

Scale 1:253,440  
 1 inch to 4 miles



NOT TO BE TAKEN FROM LIBRARY  
 NE PAS SORTIR DE LA BIBLIOTHÈQUE

